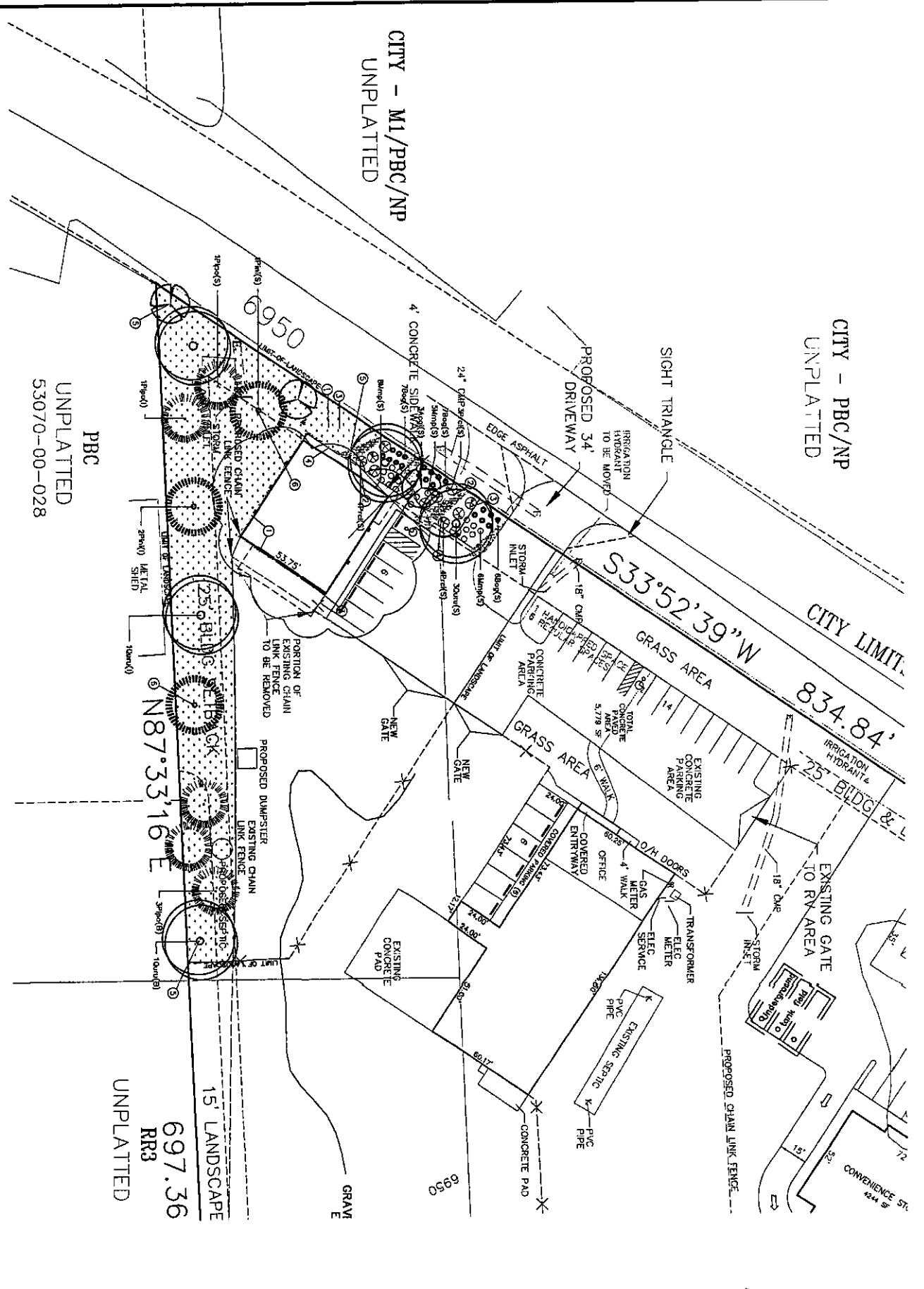


CITY - PBC/NP
UNPLATTED

CITY - M1/PBC/NP
UNPLATTED



PLANT LIST

Code Name	Common Name	Scientific Name	Planting Size	Width	Quantity
Qaru	Northern red oak	Quercus rubra	1 1/2'-0d	47.00	5
Acgl	Acorn maple	Acer glabrum	1 1/2'-0d	25.00	3
Pil	Austrian pine	Pinus nigra	6'	47.00	3
Pip	Ponderosa pine	Pinus ponderosa	6'	40.00	5

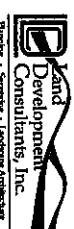
Code Name	Common Name	Scientific Name	Planting Size	Width	Quantity
Srba	Populus sand cherry	Populus alba	5'-0d	8.00	11
Mhp	Hops Magna Pine	Pinus mugo 'Mops'	5'-0d	1.00	18

Code Name	Common Name	Scientific Name	Planting Size	Width	Quantity
Orcg	Blue Oak Grass	Holcuctochloa sempervirens	1'-0d	1.00	20

GENERAL LANDSCAPE NOTES:

1. THE LANDOWNER IS RESPONSIBLE FOR OBTAINING PERMITS FROM THE CITY OF TEMPELTON FOR THE LANDSCAPE PLAN AND FOR THE INSTALLATION OF THE LANDSCAPE PLAN.
2. THE LANDSCAPE PLAN IS SUBJECT TO THE APPROVAL OF THE CITY OF TEMPELTON AND THE ARIZONA DEPARTMENT OF WATER RESOURCES.
3. THE LANDSCAPE PLAN IS SUBJECT TO THE APPROVAL OF THE ARIZONA DEPARTMENT OF WATER RESOURCES.
4. SEEDING AREAS SHALL HAVE NO BARE AREAS LARGER THAN SIX SQUARE INCHES AFTER GERMINATION.

FINAL LANDSCAPE PLAN



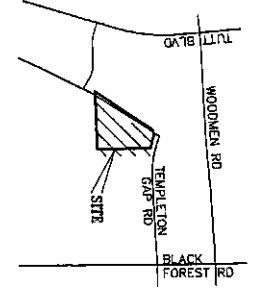
REVISIONS

NO.	DESCRIPTION	BY	DATE
1	Original Changes	JAK	8-25-05

**TEMPLETON GAP STORAGE
FINAL LANDSCAPE PLAN**

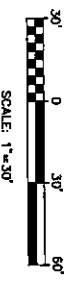
PROJECT NO.	Drawn By	Date
020731	JAK	7-26-05

Checked By: JFB Sheet: 2 of 4



- KEYED NOTES:**
1. STEEL EDGE TYPICAL. REF: DETAIL F/12-2.
 2. SHEDDED CEDAR WOOD MULCH.
 3. CORNER MULCH REF: DETAIL O&E/12-2.
 4. TYPICAL SHRUB PLANTING REF: DETAIL C/12-2.
 5. TYPICAL DECIDUOUS TREE PLANTING REF: DETAIL A/12-2.
 6. TYPICAL EVERGREEN TREE PLANTING REF: DETAIL B/12-2.

RECOMMENDED SOIL AMENDMENT:
TRI-MIX III AS SUPPLIED BY C&C SAND
-TO BE APPLIED AS BACKFILL IN PLANTING AREAS



SITE CATEGORY CALCULATIONS:

ZONE	AREA (SQ. FT.)	PERCENTAGE
LOT AREA	308 AC	
BUILDING AREA	3,312 SF	
PARKING AREA	6,375 SF	

LANDSCAPE SETBACKS (OR DOUBLE FRONTAGE LOT STREETS/CAPERS)	MIN. SETBACK (FT.)	MIN. SETBACK (FT.)	MIN. SETBACK (FT.)
STREET	25'	25'	25'
ALLEY	10'	10'	10'
FRONT YARD	5'	5'	5'
REAR YARD	5'	5'	5'

INTERMEDIATE LANDSCAPING	MIN. SETBACK (FT.)	MIN. SETBACK (FT.)
STREET	5'	5'
ALLEY	5'	5'
FRONT YARD	5'	5'
REAR YARD	5'	5'

GENERAL LANDSCAPE NOTES:

1. PLANT QUANTITIES AND SUBSTITUTIONS: IN CASE OF DISCREPANCY IN PLANT QUANTITIES SHOWN ON THE PLAN TABLE AND THOSE SHOWN ON THE PLANTING PLAN, THE QUANTITIES SHOWN ON THE PLANTING PLAN SHALL PREVAIL.
2. PLANTING: ALL PLANTS SHALL BE TYPICAL OF THEIR SPECIES, HEALTHY, FREE OF DISEASE, INSECT PESTS, MECHANICAL INJURIES, AND HAVE ADEQUATE ROOT SYSTEMS. TREES SHALL BE FULLY BRANCHED IN PROPORTION TO THEIR HEIGHT AND GROUND COVER SHALL BE FULLY DEVELOPED. PLANTS SHALL BE PLANTED IN NORMAL POSITION UNLESS OTHERWISE SPECIFIED. ANY SUBSTITUTION OF PLANT SIZE OR SPECIES MUST BE APPROVED BY THE LANDSCAPE ARCHITECT IN WRITING FOR APPROVAL PRIOR TO INSTALLATION.
3. ACCEPTABLE PLANT MATERIAL: ALL PLANTS SHALL BEET OR EXCEED 100% SURVIVAL RATE. ALL PLANTS SHALL BE TYPICAL OF THEIR SPECIES, HEALTHY, FREE OF DISEASE, INSECT PESTS, MECHANICAL INJURIES, AND HAVE ADEQUATE ROOT SYSTEMS. TREES SHALL BE FULLY BRANCHED IN PROPORTION TO THEIR HEIGHT AND GROUND COVER SHALL BE FULLY DEVELOPED. PLANTS SHALL BE PLANTED IN NORMAL POSITION UNLESS OTHERWISE SPECIFIED. ANY SUBSTITUTION OF PLANT SIZE OR SPECIES MUST BE APPROVED BY THE LANDSCAPE ARCHITECT IN WRITING FOR APPROVAL PRIOR TO INSTALLATION.
4. SOIL AMENDMENTS: ALL PLANTING AREAS AND TURF AREAS SHALL BE AMENDED AS FOLLOWS: PER 1000 SQ. FT. OF WELL-COMPOSTED ACID MANURE OR FERTILIZER COMPOST: 0 LBS/ACRE NITROGEN 0 LBS/ACRE PHOSPHORUS (P2O5) 0 LBS/ACRE POTASSIUM (K2O) 0 LBS/ACRE SULFUR (S24-5) 0 LBS/ACRE LIME
5. ALL AMENDED AREAS SHALL BE TILLED TO A DEPTH OF 4" PRIOR TO PLANTING.
6. SEEDING: ALL SEEDS OR HYDRATED AREAS SHALL DEMONSTRATE 95% GERMINATION PRIOR TO FINAL ACCEPTANCE.
7. IRRIGATION: ALL TREES, SHRUBS, AND GROUND COVERS SHALL BE IRRIGATED BY AN AUTOMATIC Drip OR SPRAY IRRIGATION SYSTEM EQUIPPED WITH A RAIN SENSOR SHUTOFF DEVICE. ALL TURF AREAS TO BE IRRIGATED BY UNDERGROUND, SENSOR SHUTOFF SYSTEM ALSO EQUIPPED WITH A RAIN SENSOR SHUTOFF DEVICE.
8. CORNER MULCH: ALL PLANTING AREAS FOR TREES, SHRUBS, GROUND COVERS AND TURF SHALL BE MULCHED WITH 3" DEPTH OF MULCH. MULCH SHALL BE 3" DEPTH OF MULCH. MULCH SHALL BE FIBROUS IN NATURE, NOT CHIPPED OR IN CHAINS, AND WATERED IN AFTER INSTALLATION. NO FLUOR FIBER IS TO BE USED UNDER WOOD MULCH.
9. IRRIGATION: ALL PLANTS SHALL BE SPECIFIED WITHIN THE KEYED NOTES ON THE LANDSCAPE PLAN SHALL BE APPLIED AS A STRIKE AND BEET OR EXCEED 100% SURVIVAL RATE. ALL PLANTS SHALL BE TYPICAL OF THEIR SPECIES, HEALTHY, FREE OF DISEASE, INSECT PESTS, MECHANICAL INJURIES, AND HAVE ADEQUATE ROOT SYSTEMS. TREES SHALL BE FULLY BRANCHED IN PROPORTION TO THEIR HEIGHT AND GROUND COVER SHALL BE FULLY DEVELOPED. PLANTS SHALL BE PLANTED IN NORMAL POSITION UNLESS OTHERWISE SPECIFIED. ANY SUBSTITUTION OF PLANT SIZE OR SPECIES MUST BE APPROVED BY THE LANDSCAPE ARCHITECT IN WRITING FOR APPROVAL PRIOR TO INSTALLATION.
10. INSPECTION AND APPROVAL: NOTIFICATION FOR IRRIGATION INSPECTION AND APPROVAL SHALL BE GIVEN TO THE CITY OF TEMPELTON PRIOR TO SEEDING. THE LANDSCAPE ARCHITECT SHALL BE NOTIFIED AT LEAST 48 HOURS PRIOR TO CLIENT SIGNATURE OF OCCUPANCY FOR FINAL LANDSCAPE INSPECTION APPROVAL.
11. ANY FIELD CHANGES OR DEVIATIONS TO THESE PLANS WITHOUT PRIOR CITY DEVELOPMENT SERVICES DEPARTMENT APPROVAL OF AN AMENDED DEVELOPMENT PLAN MAY RESULT IN A DELAY OF FINAL APPROVAL AND THE PRESENCE OF A VIOLATION OF OCCUPANCY.

OTHER:
T-GAP STORAGE
CARL GOTTSCHUET
7345 TEMPLETON GAP ROAD
COLORADO SPRINGS, CO 80922

CITY FILE NO. _____