

16499 Blasingame Rd

# PID4000

1495 SQ. FT.



State of Colorado  
Division of Housing

January 22, 2019



PLANS APPROVED  
Subject to field inspection

515247

NO.	SHEET NAME
00A	COVER SHEET
01	MAIN FLOOR PLAN
03	FLOOR FRAMING PLAN
04	MECHANICAL LAYOUT PLAN
06	WATER PLAN & ISOMETRIC
07	DRAIN PLAN
07A	DRAIN ISOMETRIC
08	ELECTRICAL PLAN
09	EXTERIOR ELEVATIONS
10	SIDEWALLS AND ENDWALLS
11	COMMON WALLS
12	ROOF FRAMING PLAN
13	OVERALL CEILING PLAN
14	FOUNDATION PLAN
16	BUILDING SECTION

### GENERAL SPECIFICATIONS

- OCCUPANCY CLASS: R-3
- TYPE OF CONSTRUCTION: V-8
- GROUND SNOW LOAD: 52 PSF
- ROOF SNOW LOAD: 40 PSF
- WIND SPEED (MPH): 126 MPH (ASCE 01-10)
- WIND EXPOSURE: EXPOSURE C
- SEISMIC CATEGORY: CAT C
- WEATHERING: SEVERE
- FROST LINE DEPTH: LOCAL JURISDICTION HAVE AUTHORITY
- TERMITE: SLIGHT TO MODERATE
- DECAY: SLIGHT TO MODERATE
- WINTER DESIGN TEMP: 2° F
- FLOOD HAZARDS: A
- FLOOD HAZARDS TO BE DETERMINED BY LOCAL JURISDICTION
- WINDSOR WINDOWS, DP OF #35
- THIS STRUCTURE MUST NOT BE SITED IN A LOCATION THAT EXCEEDS THE LISTED DESIGN CRITERIA. ITEMS INSTALLED ON SITE ARE NOT INSPECTED AND ARE NOT THE RESPONSIBILITY OF THE MANUFACTURER. THIS INCLUDES, BUT IS NOT LIMITED TO, INTERIOR AND EXTERIOR LIGHT BULBS, WHOLE HOUSE VENTILATION SYSTEM, BLOWER DOOR TESTING, COMMUNICATIONS TERMINAL, UNDER FLOOR PLUMBING, FUEL GAS LINES, STAIRS AND RAILING.

### COLORADO

2018 INTERNATIONAL BUILDING CODE  
2018 INTERNATIONAL RESIDENTIAL CODE  
2015 INTERNATIONAL MECHANICAL CODE  
2018 INTERNATIONAL PLUMBING CODE  
2018 INTERNATIONAL FUEL GAS CODE  
2015 INTERNATIONAL ENERGY CONSERVATION CODE  
2017 NATIONAL ELECTRIC CODE  
CDOH ADMINISTRATIVE RULES

### IOWA

2015 INTERNATIONAL BUILDING CODE  
2015 INTERNATIONAL RESIDENTIAL CODE  
2015 INTERNATIONAL MECHANICAL CODE  
2015 INTERNATIONAL PLUMBING CODE  
2015 INTERNATIONAL FUEL GAS CODE  
2015 INTERNATIONAL ENERGY CONSERVATION CODE  
2014 NATIONAL ELECTRIC CODE

### MINNESOTA

2012 INTERNATIONAL BUILDING CODE  
2012 INTERNATIONAL RESIDENTIAL CODE  
2012 INTERNATIONAL MECHANICAL CODE  
2012 INTERNATIONAL PLUMBING CODE  
2012 INTERNATIONAL FUEL GAS CODE  
2012 INTERNATIONAL ENERGY CONSERVATION CODE  
2011 NATIONAL ELECTRIC CODE  
INDUSTRIALIZED BUILDING COMMISSION

### MISSOURI

2015 INTERNATIONAL BUILDING CODE  
2015 INTERNATIONAL RESIDENTIAL CODE  
2015 INTERNATIONAL MECHANICAL CODE  
2018 INTERNATIONAL PLUMBING CODE  
2015 INTERNATIONAL FUEL GAS CODE  
2015 INTERNATIONAL ENERGY CONSERVATION CODE  
2014 NATIONAL ELECTRIC CODE

### MONTANA

2012 INTERNATIONAL BUILDING CODE  
2012 INTERNATIONAL RESIDENTIAL CODE  
2012 INTERNATIONAL MECHANICAL CODE  
2012 INTERNATIONAL PLUMBING CODE  
2012 INTERNATIONAL FUEL GAS CODE  
2012 INTERNATIONAL ENERGY CONSERVATION CODE  
2014 NATIONAL ELECTRIC CODE

### NEBRASKA

2015 INTERNATIONAL BUILDING CODE  
2015 INTERNATIONAL RESIDENTIAL CODE  
2015 INTERNATIONAL MECHANICAL CODE  
2015 INTERNATIONAL PLUMBING CODE  
2015 INTERNATIONAL FUEL GAS CODE  
2012 INTERNATIONAL ENERGY CONSERVATION CODE  
2017 NATIONAL ELECTRIC CODE

### NEW MEXICO

2009 INTERNATIONAL BUILDING CODE  
2009 INTERNATIONAL RESIDENTIAL CODE  
2009 INTERNATIONAL MECHANICAL CODE  
2009 INTERNATIONAL PLUMBING CODE  
2009 INTERNATIONAL FUEL GAS CODE  
2009 INTERNATIONAL ENERGY CONSERVATION CODE  
2014 NATIONAL ELECTRIC CODE

### NORTH DAKOTA

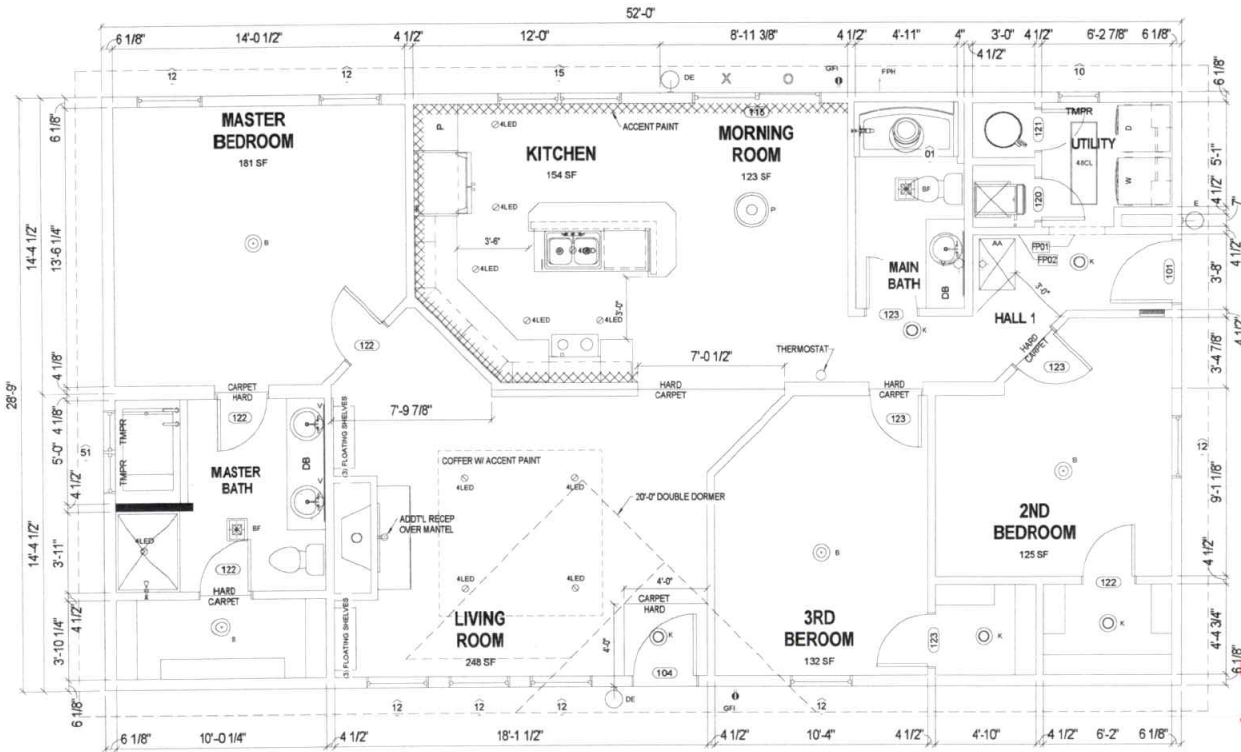
2015 INTERNATIONAL BUILDING CODE  
2015 INTERNATIONAL RESIDENTIAL CODE  
2015 INTERNATIONAL MECHANICAL CODE  
2015 INTERNATIONAL PLUMBING CODE  
2015 INTERNATIONAL FUEL GAS CODE  
2015 INTERNATIONAL ENERGY CONSERVATION CODE  
2017 NATIONAL ELECTRIC CODE  
INDUSTRIALIZED BUILDING COMMISSION

THESE DRAWINGS AND THE DESIGN SHOWN HAVE BEEN PREPARED FOR THIS SPECIFIC PROJECT AS AN INSTRUMENT OF SERVICE AND SHALL REMAIN THE SOLE PROPERTY OF BONNAVILLA HOMES AND THEIR CONSULTANTS. ANY REPRODUCTION, COPYING OR USE OTHER THAN FOR THIS SPECIFIC PROJECT IS PROHIBITED WITHOUT THE CONSENT OF BONNAVILLA HOMES. ANY PROHIBITED USE OF THESE DRAWINGS OR DESIGN ARE SUBJECT TO LEGAL ACTION.

Released for Permit

1/14/2019 2:56:42 PM





- LEGEND**
- WALL FRAMING ELEVATION
  - KEYNOTE
  - 
  - HALF WALL
  - ISLAND WALL (HEIGHT VARIES)

- GENERAL NOTES**
- 1 ALL CLOSETS TO BE 2'-0" DEEP U.N.O
  - 2 ALL SHELVING TO BE SINGLE SHELF W/ROD U.N.O
  - 3 ALL EXTERIOR WALLS TO BE 2x6 CONSTRUCTION U.N.C
  - 4 ALL DIMENSIONS ARE TO EDGE OF GYP BOARD OR CSI U.N.O

- ABBREVIATIONS**
- DB DRAWER BANK
  - DW DSHWASHER
  - L LINEN
  - P PANTRY
  - PP POTS & PANS PULLOUT
  - UNO UNLESS OTHERWISE NOTED
  - W WASHER
  - D DRYER
  - DOV DOUBLE OVEN CABINET
  - MW/MO MICROWAVE & OVEN CABINET
  - OVEN CABINET
  - MW/MO MICROWAVE CABINET

- KEYNOTES**
- FP01 HEADERED OPENING
  - FP02 RETURN AIR GRILLE

**1 FLOOR PLAN**  
01  
SCALE (22'-34) 3/8" = 1'-0"  
SCALE (11'-17) 3/16" = 1'-0"

**EXTERIOR DOOR SCHEDULE**

ID #	QTY	DESCRIPTION	SWING	JAMB	COMMENTS
101	1	36"x80" 6-PANEL FIBERGLASS	LEFT	6 1/8"	
104	1	36"x80" 1/2 CLEAR GLASS	RIGHT	6 1/8"	
115	1	72"x82" VINYL SLIDING DOOR (O-X)		6 1/8"	

**INTERIOR DOOR SCHEDULE**

ID #	QTY	DESCRIPTION	SWING	JAMB	COMMENTS
120	1	24"x80"	RIGHT	4 1/2"	
121	1	24"x80"	LEFT	4 1/2"	
122	1	30"x80"	RIGHT	3"	
122	3	30"x80"	RIGHT	4 1/2"	
123	1	30"x80"	LEFT	3"	
123	3	30"x80"	LEFT	4 1/2"	

**WINDOW SCHEDULE**

ID #	QTY	DESCRIPTION	COMMENTS
01	1	SOLAR TUBE	
10	1	24"x36" S/H TEMPERED	
12	7	36"x60" S/H EGRESS	
15	1	DOUBLE 36"x60" S/H EGRESS	
51	1	DOUBLE 24"x36" S/H OBSCURE TEMPERED	

**LIGHTING FIXTURE SCHEDULE**

ID #	QTY	DESCRIPTION	COMMENT
4LED	11	4" LED CAN LIGHT - WATERPROOF	
4BCL	1	48" CLOUD LIGHT	
AA	1	ATTIC ACCESS	
B	4	FLUSH LIGHT	
BF	2	BATH-FAN/LIGHT COMBO	
DE	2	BLACK BEVELED GLASS EXTERIOR LIGHT	
E	1	BLACK CLEAR GLASS EXTERIOR LIGHT	
K	5	FLUSH DOME LIGHT	
P	1	PENDANT LIGHT	
V	3	VANITY LIGHT	

State of Colorado  
Division of Housing  
January 22, 2019



PLANS APPROVED  
Subject to field inspection

515247

Released for Permit  
11/13/2020 2:56:42 PM 01

CUSTOMER: CALHAN, CO  
DEVELOPER: COVER MODEL HOME  
DEALER: ACCOLADE HOMES  
DRAWING TITLE: MAIN FLOOR PLAN

DATE: 11/13/18  
DWG NO: 01

111 GRANT STREET, AURORA, NEBRASKA 68013

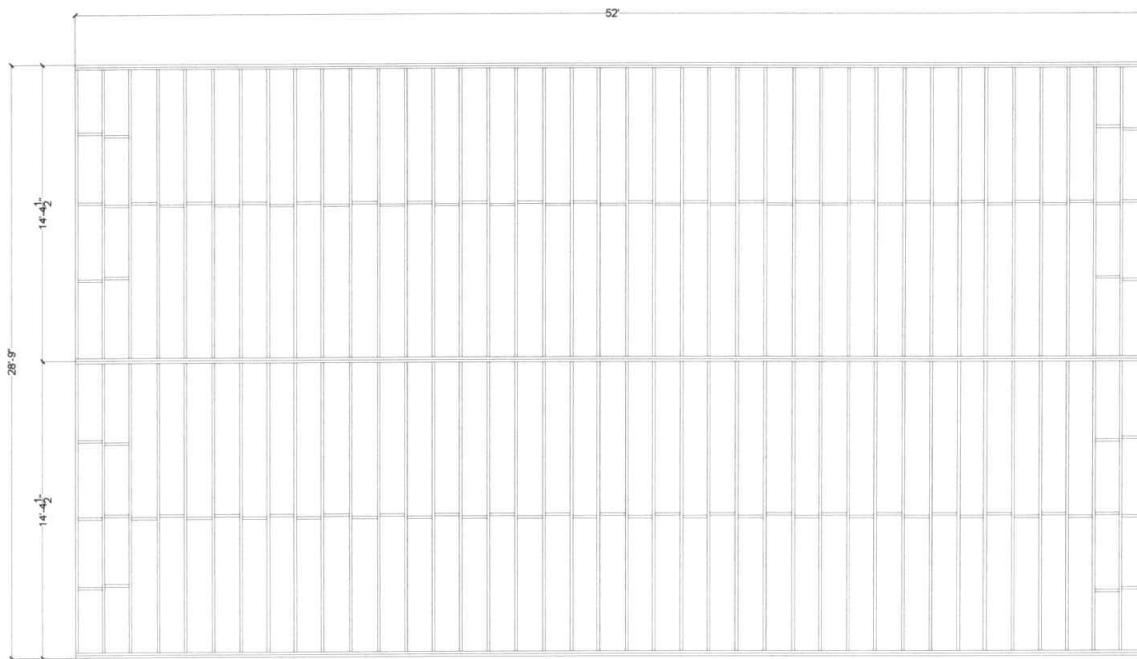
BONNAVILLA

DRN. BY: CES  
DATE: 11/13/18  
DWG NO: 01

Regionals  
shelley  
CONSTRUCTION

CODE 2018 IRC  
LOAD 40 PSF  
LOAD 40 PSF  
WIND 126 VIT MPH  
ZONE 3B-III  
CES BANK PACK  
1204/18  
11/14/18  
Preliminary Issue

QUOTE NO: Q004906  
PID: 4000



State of Colorado  
Division of Housing

January 22, 2019



PLANS APPROVED  
Subject to field inspection

515247

STATE OF COLORADO	PROFESSIONAL ENGINEER
REG. NO. 1876	EXPIRES 12/31/2021
DATE 01/22/19	SCALE 1/8" = 1'-0"
PROJECT NO. 4000	DATE 01/22/19
QUOTE NO. Q004906	DATE 01/22/19
Q CODE 2018 IRC	FLOOR LOAD 40 PSF
Q CODE 2018 IRC	WIND 128 Vult MPH
CUSTOMER DOVER MODEL HOME	DEALER ACCOLADE HOMES
111 GRANT STREET, AURORA, NEBRASKA 68013	111 GRANT STREET, AURORA, NEBRASKA 68013
111 GRANT STREET, AURORA, NEBRASKA 68013	111 GRANT STREET, AURORA, NEBRASKA 68013

FLOOR FRAMING SCHEDULE			
PART ID #	QTY	DESCRIPTION	Build Location
292220	2x10 DL	2x10 Floor Joist #2 SPF - 14'-0"	FLOOR A
292220	2x10 DL	2x10 Floor Joist #2 SPF - 14'-0"	FLOOR B

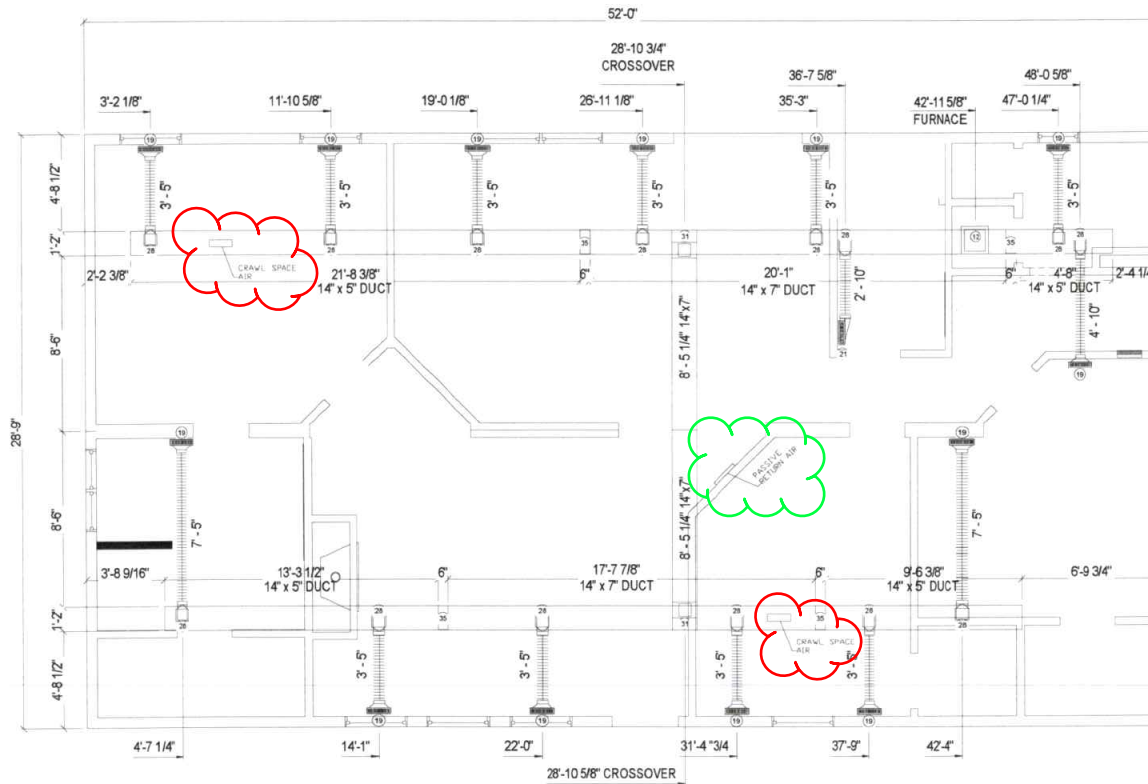
FLOOR STRUCTURAL CONNECTION SCHEDULE		
PART ID #	QTY	Build Location
580682	LU210	FLOOR A
580682	LU210	FLOOR B
580703	LU210-2	FLOOR B

FLOOR FRAMING NOTES

1. ALL FLOOR JOISTS ARE 2X10 #2 SPF OR BETTER.
2. DIMENSIONS TO MOVED OR ADDED MEMBERS ARE TO CENTERLINE OF MEMBER.
3. MARRIAGE LINE RIM JOIST TO BE 2X12 LVL W/ 2X3 LEDGER BLOCK EACH SIDE U.N.O.
4. EXTERIOR WALL RIM JOIST TO BE (2) 2X10 SPF U.N.O.
5. FULL HEIGHT BLOCKING REQUIRED IN THE FIRST TWO JOIST CAVITIES AT EACH END OF THE STRUCTURE, SUCH BLOCKING TO BE A MINIMUM 2x6 BLOCKING.
6. BLOCKING MAY BE DRILLED THROUGH TO PASS ANY PLUMBING OR ELECTRICAL LINES. PROVIDE SIMPSON C16 STRAPPING ON EDGE SIDE OF BLOCKING IF HOLES ARE DRILLED WITHIN 1/4" OF EDGE OR PENETRATE EDGE.

1 FLOOR FRAMING PLAN  
03  
SCALE (22x34) 3/8" = 1'-0"  
SCALE (11x17) 3/16" = 1'-0"

Released for Permit  
11/13/2020 2:56:39 PM 03  
REGIONAL  
shelley  
CONSTRUCTION



State of Colorado  
Division of Housing

January 22, 2019



PLANS APPROVED  
Subject to field inspection

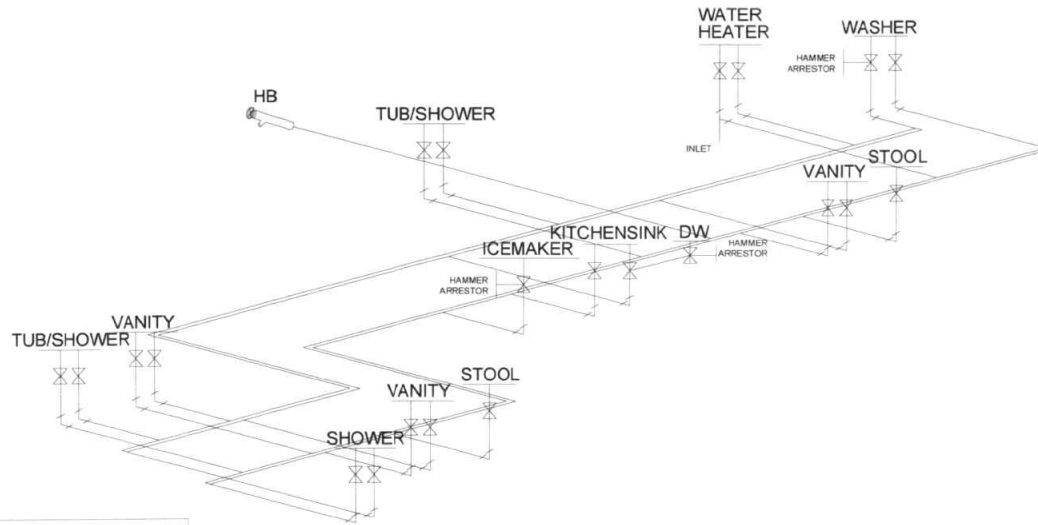
515247

DUCT FITTING SCHEDULE

PART ID #	QTY	DESCRIPTION	COMMENTS
12	1	14x14x3 FURNACE BOOT	
19	13	2 1/4x12x6 90 DEGREE BOOT	
21	1	2 1/4x12x6 INLINE BOOT RIGHT SIDE	
28	14	6\" ALUMINUM TOP TAKE OFF	
31	2	7x14 CROSSOVER TRANSITION	
35	4	7x14 TO 5x14 DUCT TRANSITION	

1  
04 MECHANICAL HVAC PLAN  
SCALE (22x34): 1/4\"=1'-0\"  
SCALE (11x17): 1/8\"=1'-0\"

CUSTOMER	DOVER MODEL HOME
DEALER	ACCOLADE HOMES
QUOTE NO.	Q004906
PD	4000
CODE	2018 IRC
FLOOR	40 PSF
LOAD	40 PSF
ZONE	40 PSF
WIND	128 VMI MPH
ZONE	
DESCRIPTION	
SITE ADDRESS	CALHAN, CO
DRAWING TITLE	MECHANICAL HVAC PLAN
DRN BY:	KS/R
DATE	1/2/19
DWG No	04



State of Colorado  
Division of Housing

January 22, 2019



**PLANS APPROVED**  
Subject to field inspection

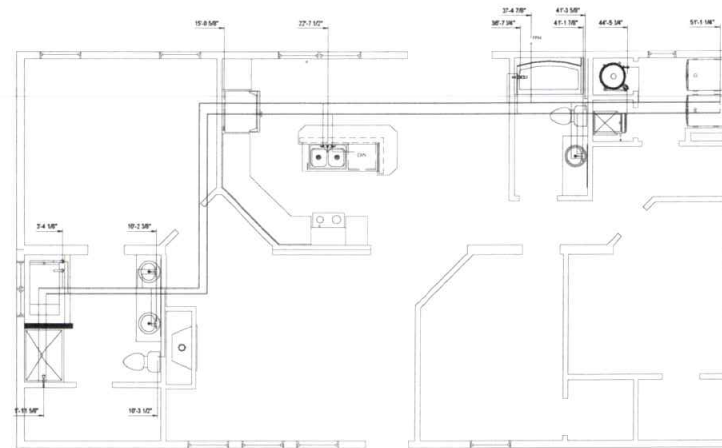
515247

**WATER SUPPLY NOTES & LEGEND**

- WATER SUPPLY PIPING TO BE 1/2" PDI W/ ASSET FITTINGS PER ASTM D-3305 OR DVMC PIPE & FITTINGS (W/ REQUIRED TRANSITION FITTINGS) PER ASTM D-2846. MATERIAL SHALL BE AS PERMITTED BY STATE AND/OR LOCAL CODES.
- PPH SIZING BASED ON PRESSURE RANGE OF 48 TO 60 PSI. INLET TO BE CONNECTED TO TULLWAY VALVE OR DISCHARGE SIDE OF WATER METER AT JOB SITE BY OTHERS.
- HOT & COLD INLETS TO BE CONNECTED TO WATER HEATER AND WATER SERVICE AT JOB SITE BY OTHERS.
- 3/4" DRAIN PIPE FROM T. & P. RELIEF VALVE SHALL EXTEND TO EXTERIOR OF BUILDING OR TERMINATE PER 2008 I.P.C. REQUIREMENTS.
- 3/4" x 6" (MNL.) METAL NIPPLES W/ JAMNUT TO WATER HEATER.
- WATER HEATER PAN AND DRAIN INSTALLED PER 2008 I.P.C. REQUIREMENTS.
- TUB FILLER SHALL NOT EXCEED 120 DEGREES.

—●— COLD WATER PIPING	—○— NON-FREEZE HOSE BIBB W/ BACKFLOW PREVENTER
—●— HOT WATER PIPING	—○— 1/2" PIPE
—○— FIXTURE SUPPLY VALVE	—○— 3/4" PIPE
—○— 3/4" TULLWAY VALVE	

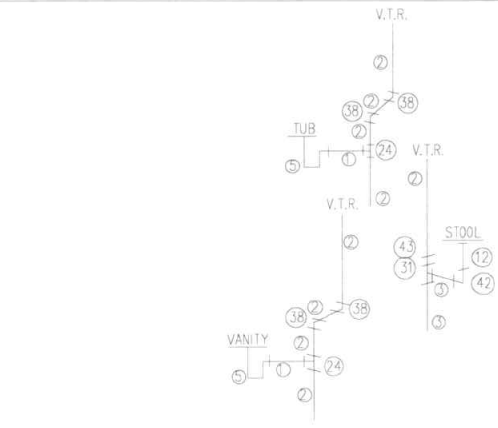
**1 WATER PLAN & ISOMETRIC**  
SCALE (22x34): 3/8" = 1'-0"  
SCALE (11x17): 3/16" = 1'-0"



DATE	BY	APP'D
1/22/19	KSE	
DRAWING NO.	PROJECT NO.	PERMITS
06	4000	
CUSTOMER		COVER MODEL HOME
DEALER		ACCOLADE HOMES
SITE ADDRESS		
CALHAN, CO		
DRAWING TITLE		
WATER PLAN & ISOMETRIC		
A DIVISION OF CH2M HILL		
BONNACVILLE		
111 GRANT STREET, AURORA, NEBRASKA 68019		
CIPCODE 2018 IRC		FLOOR LOAD 40 PSF
WIND 126 V/MI MPH		ICE 1/4"
QUOTE NO. Q004906		







State of Colorado  
Division of Housing

January 22, 2019



PLANS APPROVED  
Subject to field inspection

515247

**DRAIN LINE NOTES**

- PIPE AND FITTINGS ARE SCHEDULED 40 PVC DWV
  - CONNECTION OF BUILDING DRAIN OUTLETS TOGETHER & THEIR CONNECTION TO BUILDING SEWER TO BE DONE AT JOB SITE BY OTHERS
  - OPTIONAL HORIZONTAL DRAINAGE PIPING THAT RUNS BELOW FLOOR JOISTS MAY BE OMITTED AND ALL VERTICAL DRAIN PIPES STUBBED OFF AT OR ABOVE BOTTOM OF FLOOR JOISTS
  - HORIZONTAL DRAINAGE PIPING SHALL HAVE A UNIFORM SLOPE OF NOT LESS THAN 1/8" PER FOOT
  - EVERY DRY VENT SHALL RISE VERTICAL TO A MINIMUM OF 8 INCHES ABOVE THE F.L.R. OF THE HIGHEST TRAP OR TRAPPED FIXTURE BEING VENTED
- V.T.R. - CONSTRUCTED AS REQUIRED BY IRC SEC. P3103.2 AND NEBRASKA RULES AND REGULATIONS AMENDMENT 001 03A16
- V - VENT THAT MAY CONNECT TO A V.T.R. OR MAY EXTEND INDIVIDUALLY THROUGH THE ROOF.  
(3" PIPE A MINIMUM OF 12" BELOW & ABOVE THE ROOF LINE)
- DENOTES THROUGH FLOOR

**PLUMBING ASSEMBLY NOTES:**

- INSTALL DEVICES ABOVE FLOOR DECK; SHOWER HEAD-6" / SHOWER DIVERTER-48" / TUB SHOWER DIVERTER-42" / WASHER BOX-48" / ICEMAKER BOX-16" / MAIN SHUTOFF BOX-16" TO BOTTOM / MAIN SHUTOFF VALVE-24" TO CENTER / HOSE BIBS-12" / DRAINS-19" TO CENTER / WATER HEATER LINES-6-2".
- INSTALL ROOF VENTS MIN 12" ABOVE ROOF DECK.
- VERIFY LVL PENETRATIONS WITH ENGINEERING DEPARTMENT.
- NORTH DAKOTA 2009 UPC

**DRAIN LINE LEGEND**

1	1-1/2" PIP	11	3"	CLEANOUT PLUG	21	1-1/2"	LONG SWEEP 1/4 BEND	31	3"	L.L.T.Y.	41	3" x 3" x 3" DBL. 1/4 BEND
2	3"	12		CLOSED FLANGE	22	1-1/2"	SAN. TEE	32	2" x 1-1/2" x 1-1/2"	L.L.T.Y.	42	4" x 3" CLOSED BEND
3	3"	13	1-1/2"	AUTO VENT	23	2" x 1-1/2" x 1-1/2"	SAN. TEE	33	2" x 2" x 1-1/2"	L.L.T.Y.	43	3" x 2" FLUSH REDUCER BUSHING
4	1-1/2"	14	2"	SAN. TEE	24	2" x 2" x 1-1/2"	SAN. TEE	34	2" x 1-1/2" x 2"	L.L.T.Y.	44	3" x 1-1/2" FLUSH REDUCER BUSHING
5	1-1/2"	15	1-1/2"	P-TRAP	25	3" x 3" x 1-1/2"	SAN. TEE	35	3" x 3" x 1-1/2"	L.L.T.Y.	45	2" x 1-1/2" FLUSH REDUCER BUSHING
6	3"	16	1-1/2"	A BEND	26	3" x 3" x 2"	SAN. TEE	36	3" x 3" x 2"	L.L.T.Y.	46	3"
7	3"	17	3"	P-TRAP	27	3" x 3" x 2"	DR. SAN. TEE	37	1-1/2"	1/8 BEND	47	3" x 2" WFL
8	3"	18	3"	W/ DR. SAN. TEE	28	3" x 3" x 2"	DR. SAN. TEE	38	3"	1/8 BEND	48	3"
9	1-1/2"	19	1-1/2"	CLEANOUT PLUG	29	1-1/2"	L.L.T.Y.	39	3"	1/8 BEND		
10	3"	20	3"	LONG SWEEP 1/4 BEND	30	3"	L.L.T.Y.	40	3" x 3" x 1-1/2"	SAN. TEE W/ 2" S. INLET		

**PLUMBING SYSTEM**

- Plumbing fixtures shall have separate shut-off valves.
- Water heater shall have a safety pan with 3/4" minimum drain to exterior, T&P relief valve with drain to exterior, and a shut off valve within 3' on a cold water supply line.
- Water pipes installed in a wall exposed to the exterior shall be located on the heated side of the wall insulation. Water piping installed in an unconditioned attic shall be insulated with R8.5 insulation minimum.
- DWV system shall be either ABS or PVC.
- Water supply lines shall be polyethylene, CPVC, copper or PEX, when polyethylene supply line are installed the maximum water heater temperature setting shall not exceed 180° F.
- Polyethylene pipe shall be installed in accordance with the manufacturers limitations and instructions.
- Building drain and clearouts are to be designed by others on site and subject to review and approval by the local authority having jurisdiction.
- Tub access provided under home unless otherwise noted.
- Shower stalls shall be covered with non-absorbent material to a height of 72" above the finish floor.
- A thermal expansion device shall be provided at the water heater if required by the manufacturer's installation instructions.
- A water hammer arrestor shall be installed where quick closing valves are utilized, unless otherwise approved. Water hammer arrestors shall be installed in accordance with manufacturer's installation instructions.
- Building must be connected to a public water supply and sewer system if available.
- Shower and tub/shower combination valves shall be equipped with control valves of the pressure-balance, thermostatic-mixing or combination pressure-balance/thermostatic-mixing valve types with a high limit stop in accordance with ASSE 1016 or CSA B125. High limit stop shall limit the maximum water temperature to 120° F.
- Bathrooms and whirlpool bathtubs hot water shall be limited to a maximum temperature of 120° F by a water temperature limiting device.
- Protect all penetrations of railed assemblies.
- Pex Pipe or Tubing is not allowed to be installed within the first 18" of piping connected to Water Heater.
- High Efficiency to be installed per Manufacturer's installation requirements and attached to an indirect waste receptor.

1  
07A  
SCALE (22x34): 3/8" = 1'-0"  
SCALE (11x17): 3/16" = 1'-0"

CODES 2018 IRC PSF  
 LOAD 40 PSF  
 WIND ZONE 40 PSF  
 WIND ZONE 128 Vail MPH  
 Q/CITE NO Q004906  
 PD 4000  
 CUSTOMER DOVER MODEL HOME  
 DEALER ACCOLADE HOMES  
 SITE ADDRESS CALHAN, CO  
 DRAWING TITLE DRAIN PLAN ISOMETRIC  
 BOMMA VILLA  
 A DIVISION OF CHARTER FRACTIONEER, INC.  
 111 GRANT STREET, AURORA, NEBRASKA 68013  
 DRN BY: KSE  
 DATE: 12/19  
 DVG No:  
 07A

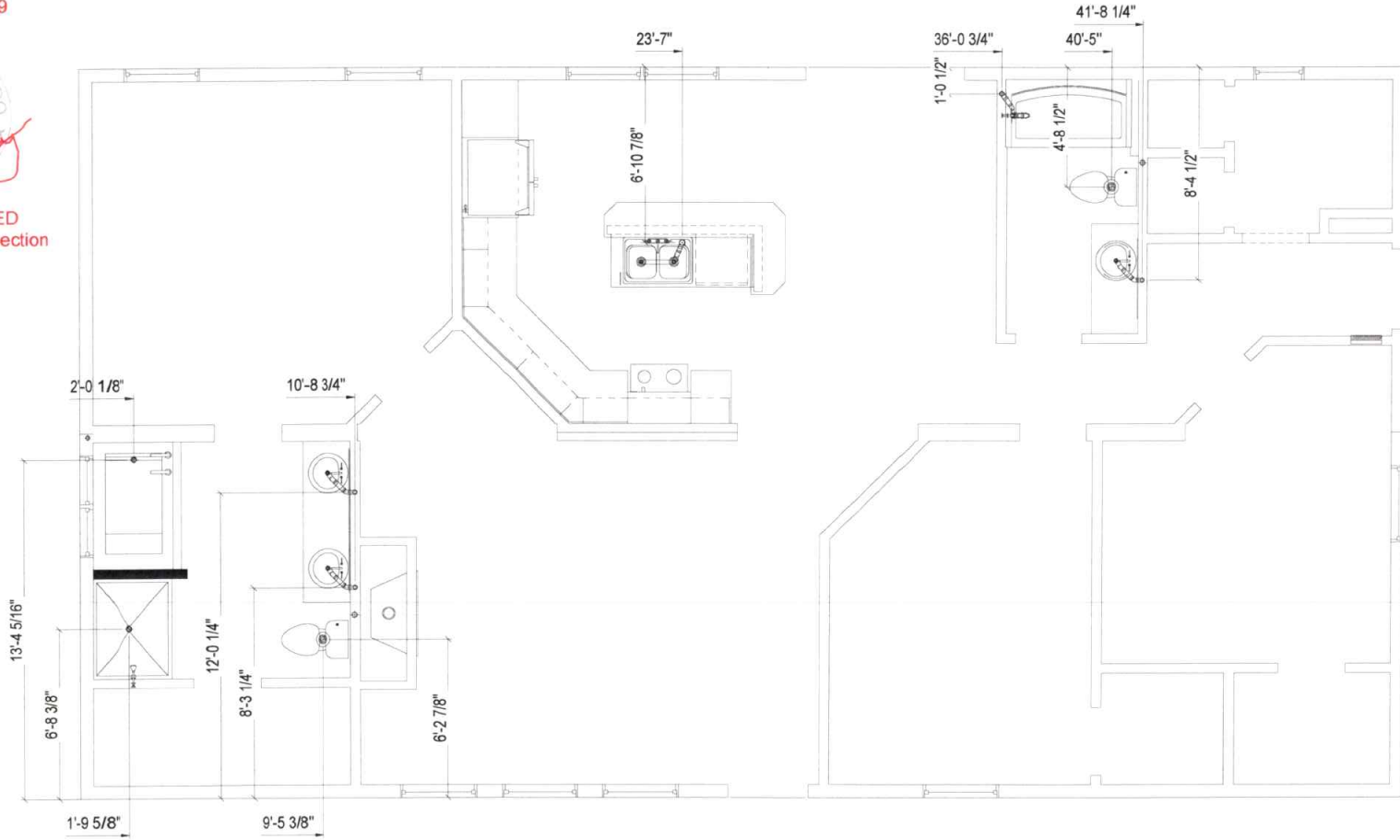
State of Colorado  
Division of Housing

January 22, 2019



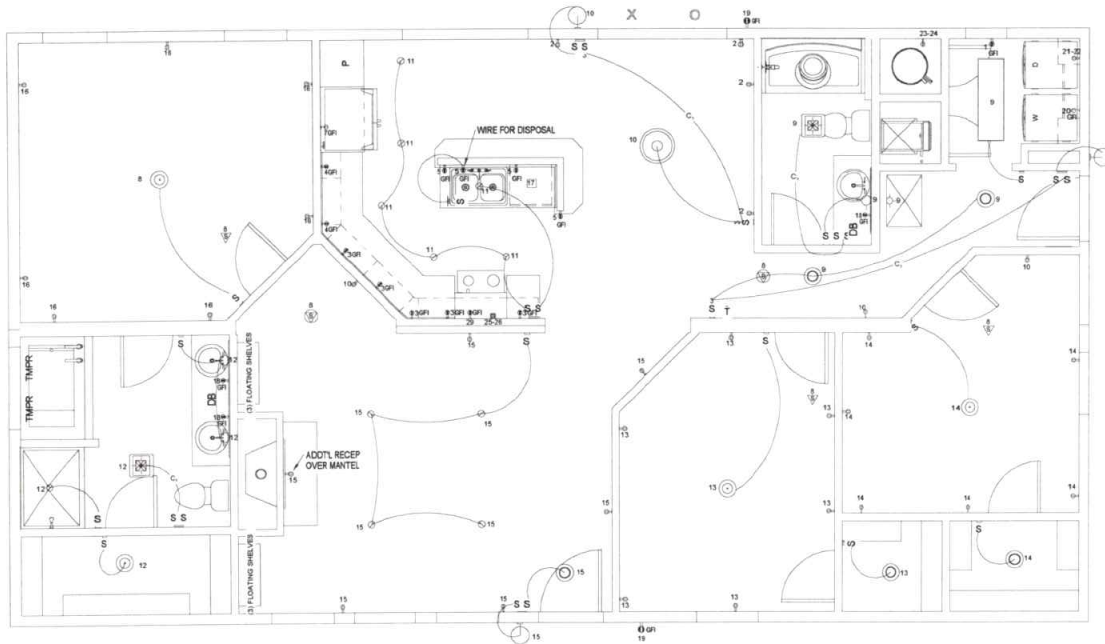
PLANS APPROVED  
Subject to field inspection

515247



1 DRAIN PLAN  
07 SCALE (22x34): 3/8" = 1'-0"  
SCALE (11x17): 3/16" = 1'-0"

STATE ADDRESS	CALHAN, CO
DRAWING TITLE	DRAIN PLAN
CUSTOMER	DOVER MODEL HOME
DEALER	ACCOLADE HOMES
PI	4000
P	Q004906
6 CODE 2018 IRC	FLOOR 40 PSF
QUOTE NO.	LOAD 40 PSF
WIND 125 MPH	ZONE
BONNAYVILLE	
A DIVISION OF DUFF INCORPORATED, INC.	
111 GRANT STREET, AURORA, NEBRASKA 68019	
DRN BY:	KSE
DATE:	1/2/19
DWG No.	07



State of Colorado  
Division of Housing

January 22, 2019



PLANS APPROVED  
Subject to field inspection

515247

**1** ELECTRICAL PLAN  
**08** SCALE (22x34): 3/8" = 1'-0"  
SCALE (11x17): 3/16" = 1'-0"

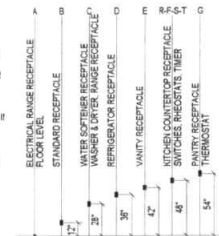
CIRCUIT	DESCRIPTION	AMPS	WIRE
1	RECEPS - UTILITY - ARC FAULT	20	12-2 WGD
2	RECEPS - MORNING ROOM - ARC FAULT	20	12-2 WGD
3	RECEPS - KITCHEN - ARC FAULT	20	12-2 WGD
4	RECEPS - KITCHEN - ARC FAULT	20	12-2 WGD
5	RECEPS - KITCHEN - ARC FAULT	20	12-2 WGD
6	RECEPS - KITCHEN - FRODGE - ARC FAULT	20	12-2 WGD
7	RECEPS - KITCHEN - FRODGE - ARC FAULT	20	12-2 WGD
8	RECEPS - KITCHEN - FRODGE - ARC FAULT	20	12-2 WGD
9	RECEPS - KITCHEN - FRODGE - ARC FAULT	20	12-2 WGD
10	RECEPS - KITCHEN - FRODGE - ARC FAULT	20	12-2 WGD
11	RECEPS - KITCHEN - FRODGE - ARC FAULT	20	12-2 WGD
12	RECEPS - KITCHEN - FRODGE - ARC FAULT	20	12-2 WGD
13	RECEPS - KITCHEN - FRODGE - ARC FAULT	20	12-2 WGD
14	RECEPS - KITCHEN - FRODGE - ARC FAULT	20	12-2 WGD
15	RECEPS - KITCHEN - FRODGE - ARC FAULT	20	12-2 WGD
16	RECEPS - KITCHEN - FRODGE - ARC FAULT	20	12-2 WGD
17	RECEPS - KITCHEN - FRODGE - ARC FAULT	20	12-2 WGD
18	RECEPS - KITCHEN - FRODGE - ARC FAULT	20	12-2 WGD
19	RECEPS - KITCHEN - FRODGE - ARC FAULT	20	12-2 WGD
20	RECEPS - KITCHEN - FRODGE - ARC FAULT	20	12-2 WGD
21-23	RECEPS - KITCHEN - FRODGE - ARC FAULT	20	12-2 WGD
24-26	RECEPS - KITCHEN - FRODGE - ARC FAULT	20	12-2 WGD
27	RECEPS - KITCHEN - FRODGE - ARC FAULT	20	12-2 WGD
28	RECEPS - KITCHEN - FRODGE - ARC FAULT	20	12-2 WGD
29	RECEPS - KITCHEN - FRODGE - ARC FAULT	20	12-2 WGD
30	RECEPS - KITCHEN - FRODGE - ARC FAULT	20	12-2 WGD

**ELECTRICAL LEGEND**

- ⊙ INTERIOR DUPLEX RECEPT
- ⊙ INTERIOR SINGLE RECEPT
- ⊙ INTERIOR GROUND FAULT DUPLEX RECEPT
- ⊙ INTERIOR GROUND FAULT DUPLEX RECEPT
- ⊙ EXTERIOR DUPLEX RECEPT
- ⊙ FLOOR DUPLEX RECEPT
- ⊙ SOFTPT GROUND FAULT DUPLEX RECEPT
- ⊙ ELECTRIC RANGE RECEPT
- ⊙ DRYER RECEPT
- ⊙ RECEPT CENTER
- ⊙ WATER HEATER LOCKOUT TYPE BREAKER
- ⊙ RECEPT
- ⊙ SMOKE DETECTOR
- ⊙ SMOKE-CO DETECTOR
- S SWITCH
- 3-WAY SWITCH
- R RHODSTAT
- 3-WAY RHODSTAT
- I TIMER SWITCH
- PANEL BOX
- ▽ JACK SYMBOL FOR TV, PH, CAS, WPH
- TV CABLE JACK
- PH PHONE JACK
- CAS DATA JACK
- WPH WALL PHONE JACK

**ELECTRICAL NOTES**

- ALL 125-VOLT, 15 & 20 AMP RECEPTACLES SHALL BE LISTED TAMPER-RESISTANT RECEPTACLES
- OUTDOOR RECEPTACLES EQUIPPED WITH IN USE WEATHER PROOF COVERS
- ALL RECEPTACLE AND SWITCH LOCATIONS ARE TYPICAL HEIGHT UNLESS NOTED OTHERWISE
- NO AMP CONNECTORS - ALL CONNECTIONS MUST BE MADE IN BOX
- LIGHTS WITH DIMENSIONS WILL BE LOCATED IN DROPPED CEILING
- EXTERIOR LIGHTS ARE TO BE LISTED FOR WET LOCATIONS



CUSTOMER: DOVER MODEL HOME  
DEALER: ACCOLADE HOMES

CODE: 2018 IRC  
LOAD: 40 PSF  
ZONE: 40  
WIND: 125 V/MI MPH  
CEILING: 120 V/MI MPH

QUOTE NO: Q004906  
PD: 4000

SITE ADDRESS: CALHAN, CO  
DRAWING TITLE: ELECTRICAL PLAN  
111 GRANT STREET, CALHAN, NEBRASKA 68301

DRN BY: KSR  
DATE: 1/21/19  
DWG NO: 08



State of Colorado  
Division of Housing

January 22, 2019

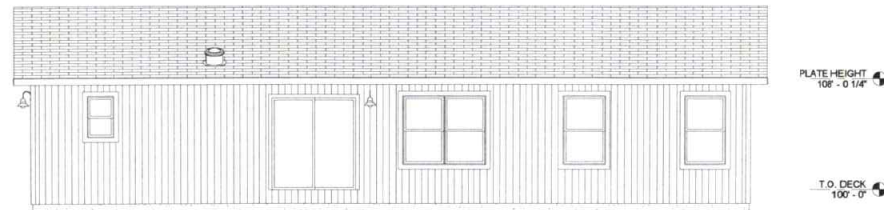


PLANS APPROVED  
Subject to field inspection

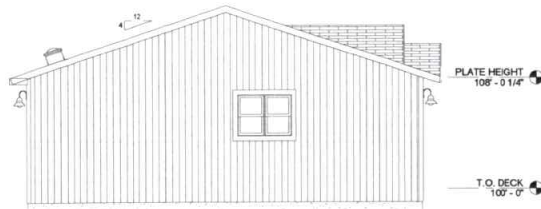
515247



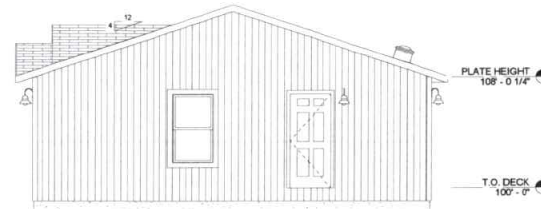
1 FRONT ELEVATION  
09 SCALE (22x34): 1/4" = 1'-0"  
SCALE (11x17): 1/8" = 1'-0"



2 REAR ELEVATION  
09 SCALE (22x34): 1/4" = 1'-0"  
SCALE (11x17): 1/8" = 1'-0"



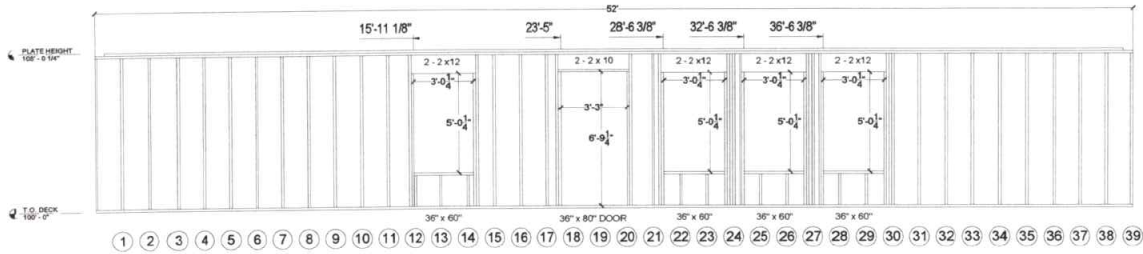
3 LEFT ELEVATION  
09 SCALE (22x34): 1/4" = 1'-0"  
SCALE (11x17): 1/8" = 1'-0"



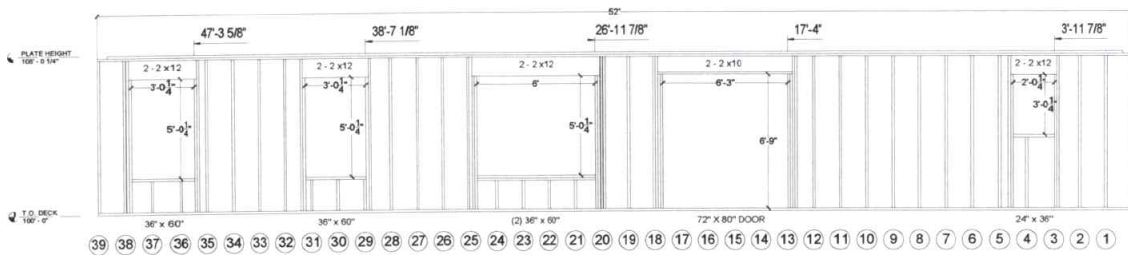
4 RIGHT ELEVATION  
09 SCALE (22x34): 1/4" = 1'-0"  
SCALE (11x17): 1/8" = 1'-0"

DATE	11/13/18	DES	120418	11/14/18	DES	PRELIMINARY ISSUE
BY		CS				
PROJECT	4000	PC				
QUOTE NO.	Q004906	PSF	40	PSF	40	PSF
WIND	126 Vuit	WIND	126 Vuit	MPH		
ZONE		ZONE		ZONE		
SCHE		SCHE		SCHE		
CASE	2018 IRC	CS				
FLOOR	40	FLOOR	40	FLOOR	40	FLOOR
LOAD		LOAD		LOAD		LOAD
DEALER	ACCOLADE HOMES	DEALER		DEALER		DEALER
CUSTOMER	DOVER MODEL HOME	CUSTOMER		CUSTOMER		CUSTOMER
ADDRESS	CALHAN, CO	ADDRESS		ADDRESS		ADDRESS
DRAWING TITLE	EXTERIOR ELEVATIONS	DRAWING TITLE		DRAWING TITLE		DRAWING TITLE
111 GRANT STREET AUBURN, NEBRASKA 68501						
DIRN. BY	CS	DATE	11/13/18	DES		

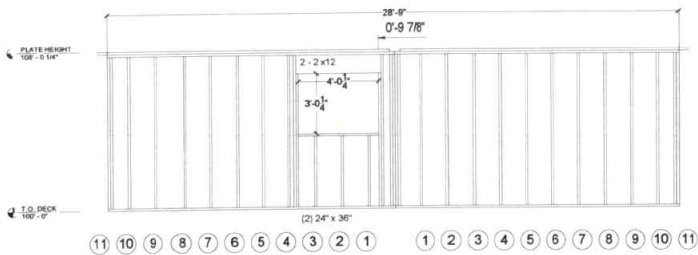
Released for Permit  
11/13/2018 2:56:43 PM 09  
REGIONAL  
shelley  
CONSTRUCTION



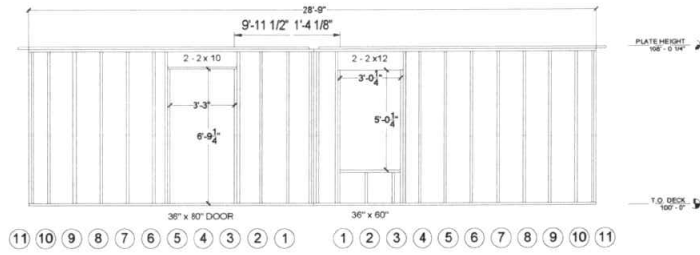
**1 FRONT SIDEWALL**  
 10 SCALE (22x34): 3/8" = 1'-0"  
 SCALE (11x17): 1/8" = 1'-0"



**2 BACK SIDEWALL**  
 10 SCALE (22x34): 3/8" = 1'-0"  
 SCALE (11x17): 1/8" = 1'-0"



**3 TAIL ENDWALL**  
 10 SCALE (22x34): 3/8" = 1'-0"  
 SCALE (11x17): 1/8" = 1'-0"



**4 HITCH ENDWALL**  
 10 SCALE (22x34): 3/8" = 1'-0"  
 SCALE (11x17): 1/8" = 1'-0"

State of Colorado  
 Division of Housing  
 January 22, 2019



PLANS APPROVED  
 Subject to field inspection

515247

DATE	10/19
DRN BY	KSE
DATE	10/19
DRWG NO.	10
PERMITS	11/13/2020 2:56:43 PM
CONSTRUCTION	shelley
SITE ADDRESS	CALHAN, CO
CUSTOMER	DOVER MODEL HOME
DEALER	ACCOLADE HOMES
DRAWING TITLE	SIDEWALLS & ENDWALLS
QUANTITY	4
SCALE	1/8" = 1'-0"
WIND	128 Vult MPH
ZONE	3
PSF	40
LOAD	40
CODE	2018 IRC
PID	4000
QUANTITY	4004906

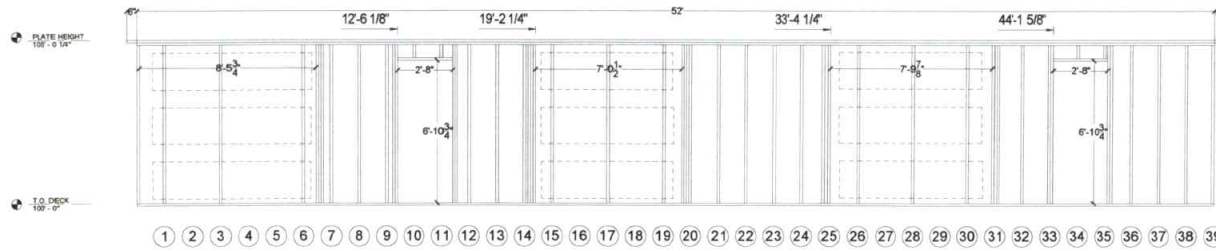
State of Colorado  
Division of Housing

January 22, 2019

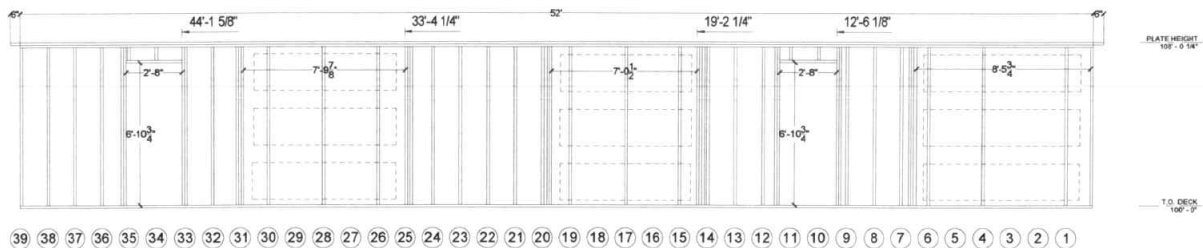


PLANS APPROVED  
Subject to field inspection

515247



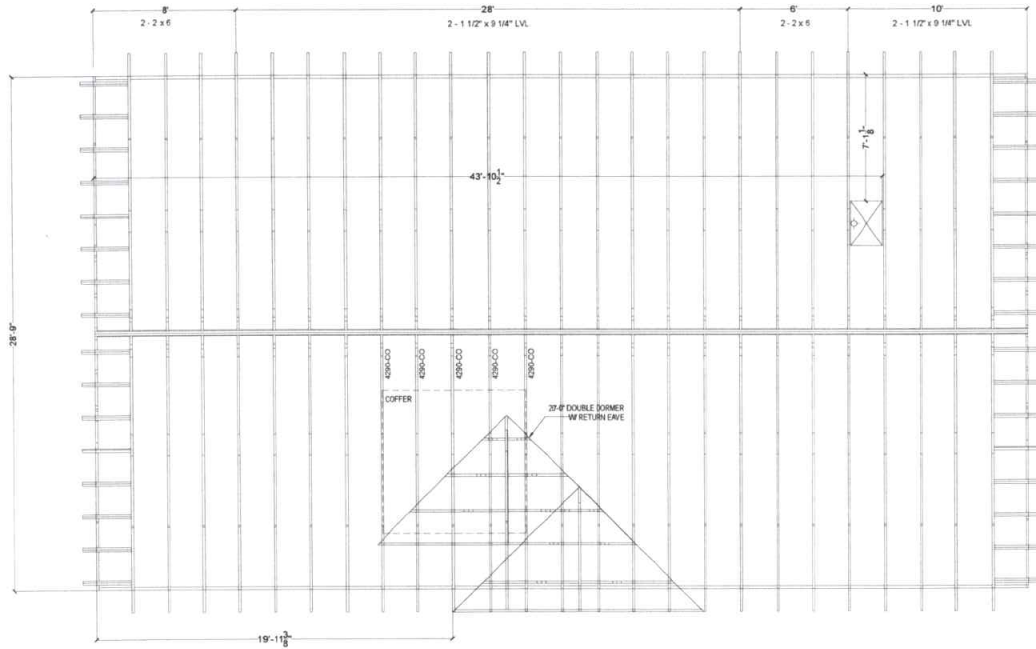
**1** COMMONWALL A  
**11**  
SCALE (22:34): 3/8" = 1'-0"  
SCALE (11:17): 3/16" = 1'-0"



**2** COMMONWALL B  
**11**  
SCALE (22:34): 3/8" = 1'-0"  
SCALE (11:17): 3/16" = 1'-0"

Q CODE	2018 IRC	40	PSF	40	PSF	40	PSF	40	PSF
Q CODE (IC)	Q004906	Q004906	Q004906	Q004906	Q004906	Q004906	Q004906	Q004906	Q004906
PIE	4000	4000	4000	4000	4000	4000	4000	4000	4000
CUSTOMER	DOVER MODEL HOME	DEALER	ACCOLADE HOMES	ACCOLADE HOMES	ACCOLADE HOMES	ACCOLADE HOMES	ACCOLADE HOMES	ACCOLADE HOMES	ACCOLADE HOMES
SITE ADDRESS	CALHAN, CO	DRAWING TITLE	COMMONWALLS	COMMONWALLS	COMMONWALLS	COMMONWALLS	COMMONWALLS	COMMONWALLS	COMMONWALLS
DRN BY	KSE	DATE	1/9/19	1/9/19	1/9/19	1/9/19	1/9/19	1/9/19	1/9/19
11/13/2020 2:56:43 PM	11	11	11	11	11	11	11	11	11

Released for Permit  
11/13/2020 2:56:43 PM  
REGIONAL  
shelley  
CONSTRUCTION



State of Colorado  
Division of Housing

January 22, 2019



PLANS APPROVED  
Subject to field inspection

515247

ROOF FRAMING SCHEDULE

PART ID #	QTY	DESCRIPTION	LADDER #	BUILD LOCATION	TYPE COMMENTS	COMMENTS
25	4289-MT	4/12 - 14'-3" - 171" MONO TRUSS - 40# / 126 VuIt MPH		FLOOR A		
20	4289-MT	4/12 - 14'-3" - 171" MONO TRUSS - 40# / 126 VuIt MPH		FLOOR B		
5	4290-CO	4/12 - 14'-3" - 171" MONO TRUSS - 40# / 126 VuIt MPH-COFFER		FLOOR B		
2	4204-MG1	GABLE END TRUSS - 40# / 126 VuIt MPH		FLOOR A		
2	4205-MG2	GABLE INSERT - 40# / 126 VuIt MPH		FLOOR B		
2	4204-MG1	GABLE END TRUSS - 40# / 126 VuIt MPH		FLOOR B		
2	4205-MG2	GABLE INSERT - 40# / 126 VuIt MPH		FLOOR B		
1	DD20	20'-0" DOUBLE DORMER 4/12 - 40# / 126 VuIt MPH				

1 ROOF FRAMING PLAN  
12 SCALE (22x34) 3/8" = 1'-0"  
SCALE (11x17) 3/16" = 1'-0"

STATE OF COLORADO DIVISION OF HOUSING	DATE: 1/22/19
PROJECT: 515247	PI: 4000
QUOTE NO: Q004906	CODE 2018 IRC
ROOF LOAD: 40 PSF	ROOF WIND: 126 VuIt MPH
WIND ZONE: 2	DEALER: ACCOLADE HOMES
CUSTOMER: DOVER MODEL HOME	DEALER: ACCOLADE HOMES
SITE ADDRESS: CALHAN, CO	DRAWING TITLE: ROOF FRAMING PLAN
BONNA VILLA A DIVISION OF CH2M HILL CONSTRUCTION, INC. 111 GRANT STREET, AURORA, NEBRASKA 68003	DRN. BY: KSE DATE: 1/31/19
Released for Permit 11/13/2020 2:56:43 PM	DWG No: 12
shelley CONSTRUCTION	

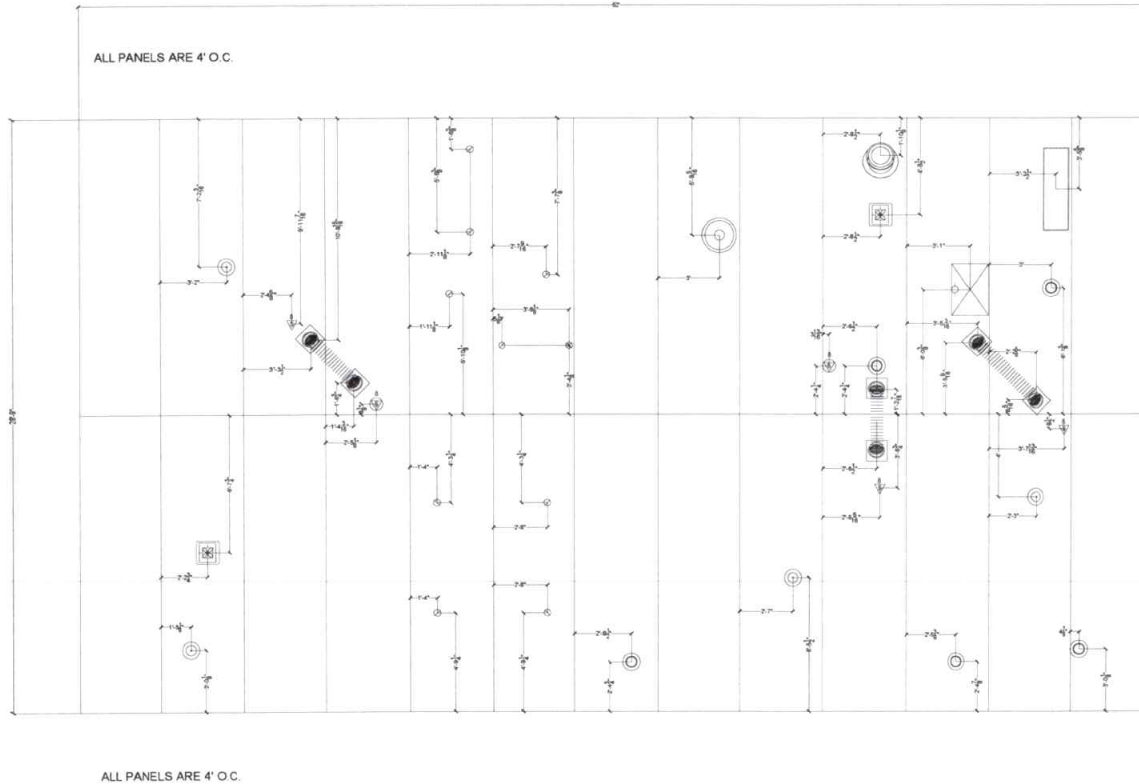
State of Colorado  
Division of Housing

January 22, 2019



PLANS APPROVED  
Subject to field inspection

515247



1 OVERALL CEILING PLAN  
13 SCALE (22x34): 3/8" = 1'-0"  
SCALE (11x17): 1/8" = 1'-0"

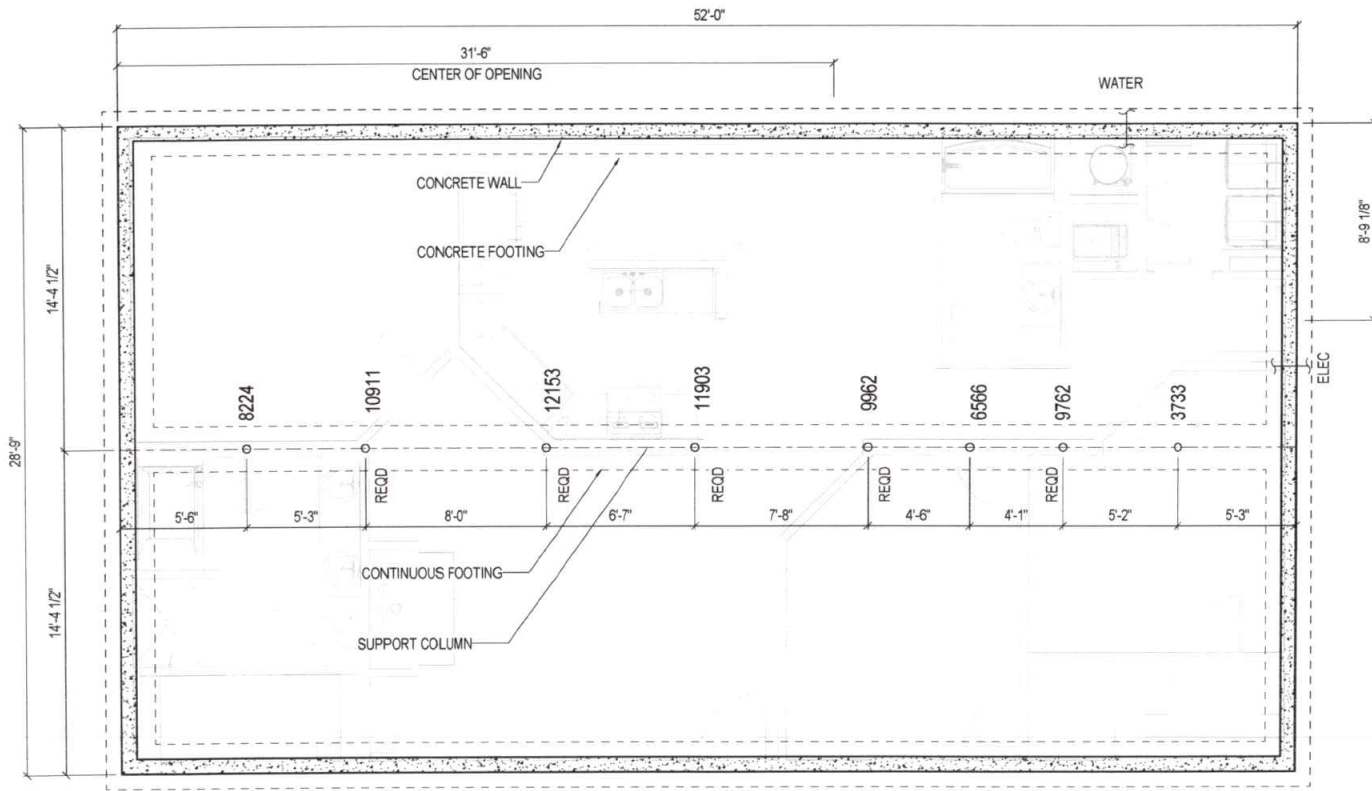
Q CODE	2018 IRC
FLOOR LOAD	40 PSF
WIND SPEED	40 PSF
WIND ZONE	40 PSF
WIND DIR	128 MPH
ECHE	
PI	4000
CUSTOMER	DOVER MODEL HOME
DEALER	ACCOLADE HOMES
SITE ADDRESS	CALHAN, CO
DRAWING TITLE	OVERALL CEILING PLAN
DRN BY	KSE
DATE	10/19

REGISTRATION NO. 111 GRANT STREET, AURORA, ILLINOIS 60005  
**BONNAVILLA**  
A DIVISION OF THE REGISTRATION NO. 111 GRANT STREET, AURORA, ILLINOIS 60005

Released for Permit  
11/13/2020 2:56:43 PM 13  
REGIONAL  
shelley  
CONSTRUCTION



1/22/2019 7:59:22 AM T:\2019 Projects\PID4000-ACCOLADE-DOVER MODEL HOME\Local Files\PID4000-ACCOLADE-DOVER MODEL HOME-14.rvt



State of Colorado  
Division of Housing

January 22, 2019



PLANS APPROVED  
Subject to field inspection

515247

1 FOUNDATION PLAN  
14  
SCALE (22x34): 3/8" = 1'-0"  
SCALE (11x17): 3/16" = 1'-0"

SEE SITE SPECIFIC DESIGN

FOUNDATION NOTES:

- FOUNDATION, FOOTINGS, AND/OR PIERS DESIGNED TO THE FOLLOWING LOADING CRITERIA:  
FLOOR 40 PSF LL, 10 PSF DL  
WALL 5 PLF DL  
ROOF 40 PSF LL, 15 PSF DL
- IT IS THE RESPONSIBILITY OF THE HOMEOWNER AND/OR FOUNDATION CONTRACTOR TO MEET ALL ELECTRICAL, MECHANICAL, ENERGY, AND BUILDING CODES.
- FOR CRAWLSPACE APPLICATION, THE MINIMUM NET AREA OF VENTILATION OPENINGS FOR LINER-FLOOR VENTILATION SHALL MEET THE MINIMUM REQUIREMENTS OF THE APPLICABLE BUILDING CODES (OR LOCAL REQUIREMENTS IF MORE STRINGENT).
- FOUNDATION ACCESS SHALL BE DETERMINED, LOCATED, VERIFIED, AND INSTALLED IN FIELD, BY OTHERS TO THE APPLICABLE BUILDING CODES.
- THE RIM JOIST ALONG THE MARRIAGE LINE CONSISTS OF 1-1/2" x 11-7/8" LAMINATED BEAMS. PROVIDE SUPPORTS PIERS ALONG THE MARRIAGE LINE 2-3/4" SHORTER THAN PERMETER SUPPORTS. (NOT APPLICABLE WITH TRUSS FLOOR SYSTEMS)

PROJECT NO.	Q004906
PID	4000
CUSTOMER	DOVER MODEL HOME DEALER ACCOLADE HOMES
SITE ADDRESS	CALHAN, CO
DRAWING TITLE	FOUNDATION PLAN
DRN. BY	CES
DATE	11/13/18
DWG No.	14

