



WOODMOOR

Water & Sanitation District No. 1

P. O. Box 1407 • Monument, Colorado 80132
Phone (719) 488-2525 • Fax (719) 488-2530

August 26, 2024

To: La Plata Communities, Inc
Attn: Steve Rossell
9540 Federal Drive, Suite 200
Colorado Springs, CO 80921

RE: Water & Wastewater Service Commitment – Waterside Condominiums
El Paso County Parcel Numbers: 7111404113 - 7111404194

Dear Mr. Rossell:

The above referenced development, as depicted in the attached sketch, is located within the service boundaries of Woodmoor Water and Sanitation District No. 1 (the District).

It is the District's understanding that La Plata Communities intends to construct 40 multi-family units and 4 single-family units on 7.53 acres of land within the Waterside Development with a projected total water demand of 12.187 Acre-Feet per year.

The District is committed to providing water and sewer services to the development once the following terms and conditions are met:

1. The Developer must apply for, be subsequently allocated, and enter into an agreement with the District for Supplemental Water Service. Supplemental Water Service is allocated by the District's Board (in its sole and absolute discretion) and therefore is not guaranteed. The District makes no representation herein (expressed or implied) as to whether Developer will or won't be successful in obtaining Supplemental Water Service for the Development.
2. The Development must comply with all District rules, regulations, specifications, and policies regarding water and wastewater service, including the District's System Specifications regarding installation of Water and Sewer utilities, granting of water and sewer utility easements, and construction of offsite improvements if required.

If you should have any questions or need further assistance, please contact me.

Sincerely,

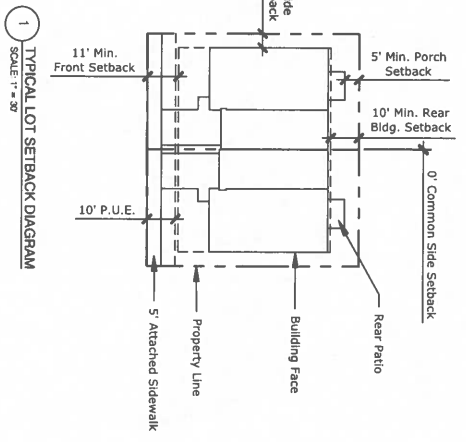
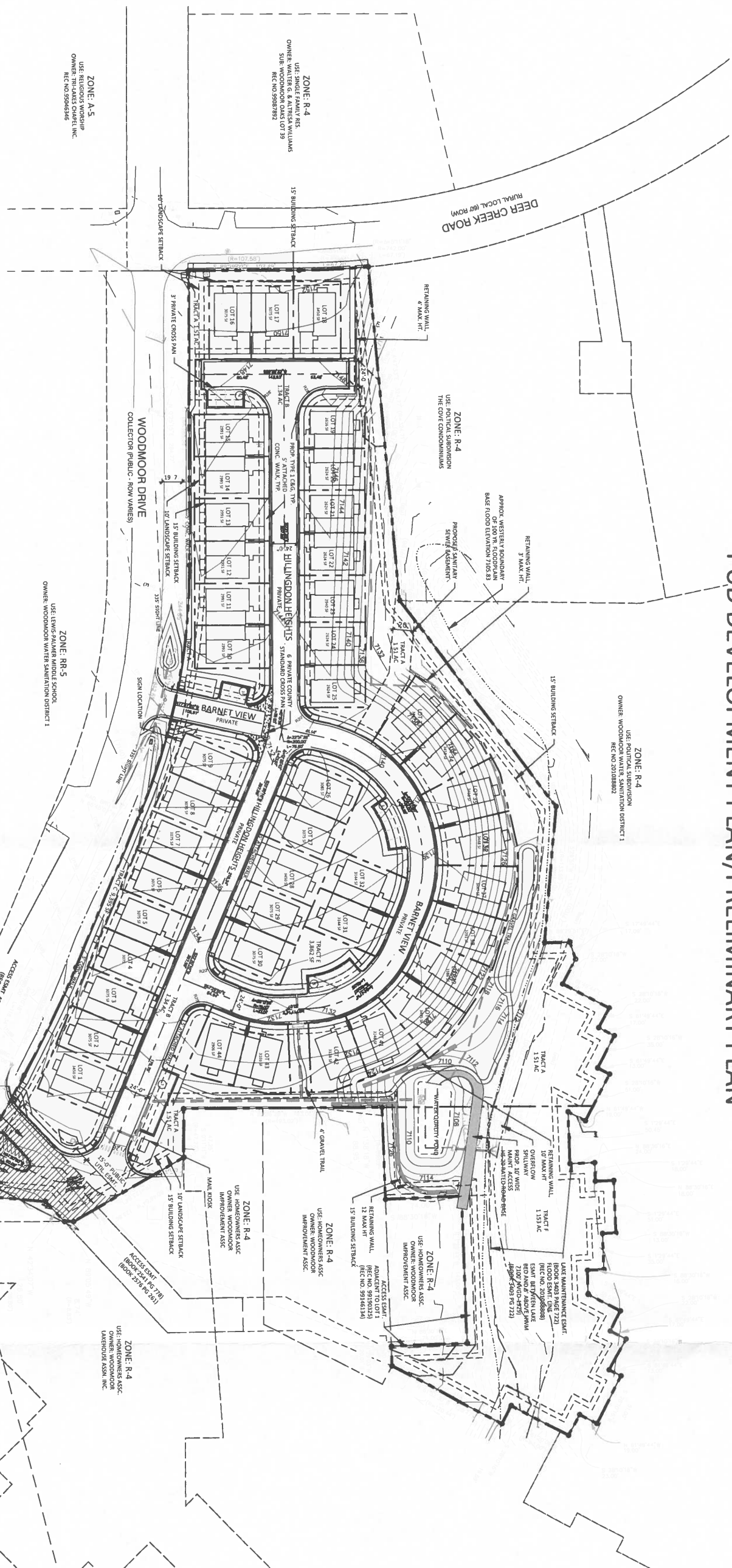
Jessie J. Shaffer
District Manager

Cc: Cydney Saelens – District Engineer

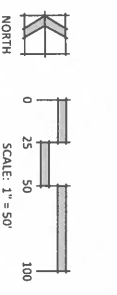
WATERSIDE AT LAKE WOODMOOR

SW 1/4 OF THE SE 1/4 OF SECTION 11 TOWNSHIP 11 SOUTH, RANGE 67 WEST, 6TH PRINCIPAL MERIDIAN EL PASO COUNTY, COLORADO

PUD DEVELOPMENT PLAN/PRELIMINARY PLAN



- #### LEGEND
- PROPERTY BOUNDARY
 - CENTERLINE
 - LOT BOUNDARY
 - SETBACKS
 - SIGHT LINE
 - 100 YEAR FLOODPLAIN



N.E.S., Inc.
619 N. Cascade Avenue, Suite 200
Colorado Springs, CO 80903
Tel. 719.471.0073
Fax 719.471.0267
www.nescolorado.com
© 2012. All Rights Reserved.

**WATERSIDE
AT LAKE
WOODMOOR**
PUD DEVELOPMENT PLAN/
PRELIMINARY PLAN
WOODMOOR DRIVE
MONUMENT, CO

PROJECT INFO
DATE: 07/16/2022
PREPARED BY: B. SWENSON

ISSUE NO	ISSUE / REVISION	DATE	BY	DESCRIPTION
1	REVISION	02/17/2023	J.S.	PAR. COUNTY COMMENTS
2	REVISION	04/6/2023	J.S.	PAR. COUNTY COMMENTS
3	REVISION	11/19/2023	JMS	REVISION PRODUCT TYPE

PLAN FILE #	SHEET NUMBER	SHEET TITLE
PUDSP-22-009	2	PUD SITE PLAN
	OF	23