

ABBREVIATION

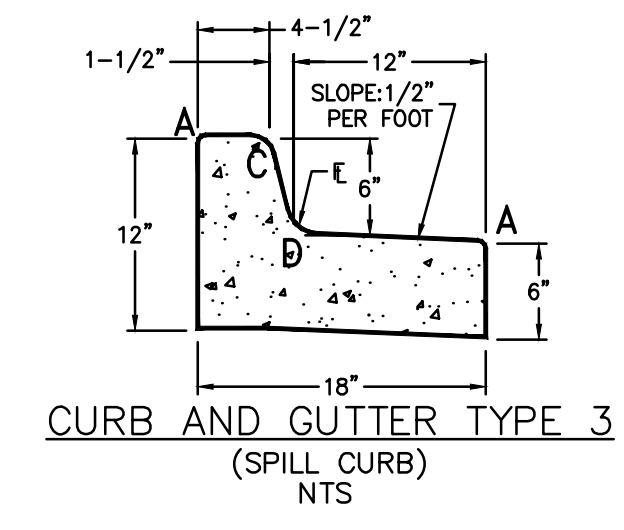
C&G	CURB AND GUTTER
EOA	EDGE OF ASPHALT
EX	EXISTING
MH	MANHOLE
PED	PEDESTRIAN
PP	PROPOSED
STM	STORM
SW	SIDEWALK
TELE	TELEPHONE
TYP	TYPICAL

LEGEND

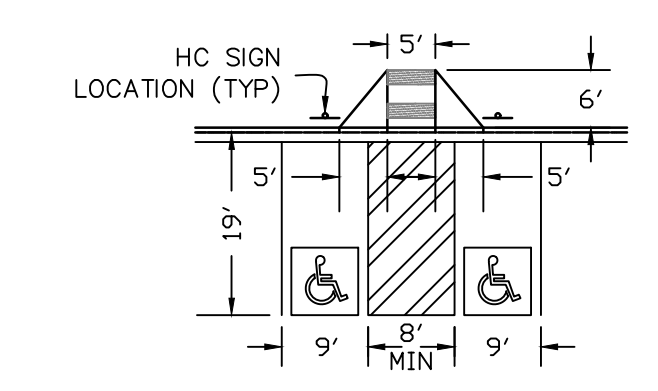
PROPERTY LINE.....	---
ROW.....	---
EASEMENT.....	---
STOP SIGN.....	⊥
SANITARY SERVICE LINE.....	SS
WATER SERVICE LINE.....	W
ELECTRIC SERVICE LINE.....	E
TELE SERVICE LINE.....	T
BUILDING SETBACKS.....	---
NUMBER OF PARKING STALLS.....	②
HANDICAP PARKING.....	♿
TRAFFIC FLOW DIRECTION.....	➔
ADA ACCESS PATH.....	

NOTES

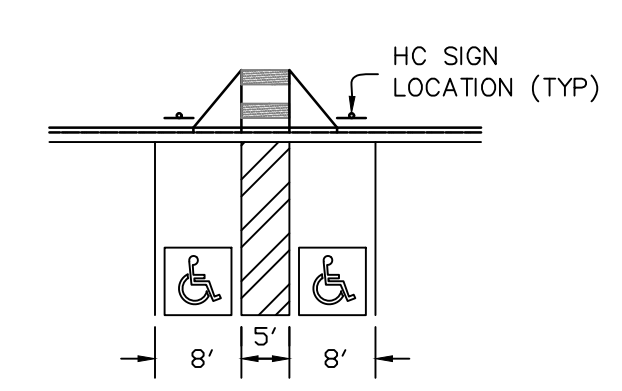
1. NO FLOODPLAIN, NO-BUILD AREAS, OR DRAINAGE WAY AREAS ARE LOCATED ON THE SITE.
2. NO LOADING OR OTHER VEHICULAR USE AREAS ARE LOCATED ON THE SITE.
3. REFERENCE SITE SIGN PLAN FOR LOCATIONS & SIZING



LENGTH FOR RADII
A = 1/2"
C = 1-1/2"
D = 1-1/2" TO 2"

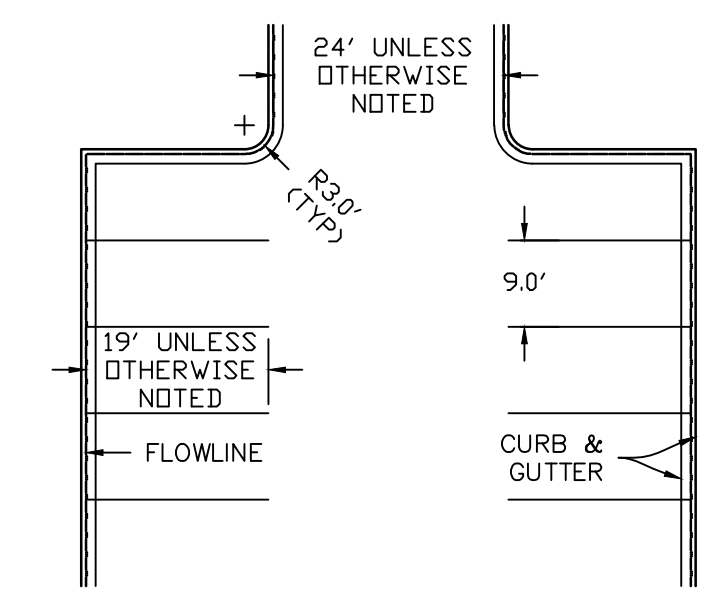


VAN PARKING LAYOUT  
NTS

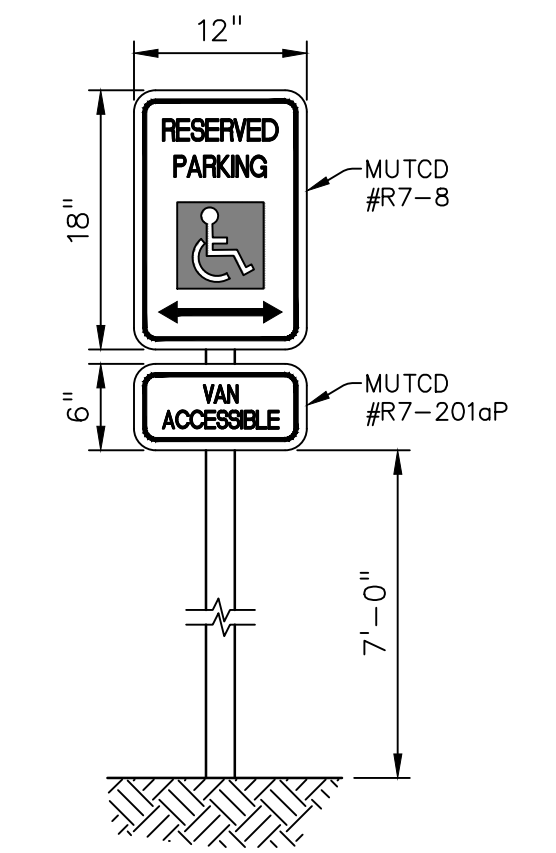


REGULAR PARKING LAYOUT  
NTS

TYPICAL HANDICAP PARKING LAYOUT  
NTS



TYPICAL PARKING LAYOUT  
NTS



HC SIGN DETAIL  
NTS

PREPARED BY:



CLIENT:

**EVERGREEN  
MERIDIAN &  
WOODMEN, LLC**  
2390 E CAMELBACK RD.,  
SUITE #410  
PHOENIX, AZ 85016

DEVELOPMENT PLANS FOR:  
**LOT 1A, FALCON  
MARKETPLACE**  
7520 FALCON MARKET PLACE  
EL PASO COUNTY, COLORADO

ISSUE	DATE
INITIAL ISSUE	9/18/2023
2nd SUBMITTAL	11/16/2023
DESIGNED BY:	KGV
DRAWN BY:	CGH
CHECKED BY:	TDM
FILE NAME:	20988-USP

PREPARED UNDER MY DIRECT  
SUPERVISION FOR AND ON BEHALF  
OF DREXEL, BARRELL & CO.  
DRAWING SCALE:  
HORIZONTAL: 1"=40'  
VERTICAL: N/A

**UTILITY  
&  
SITE PLAN**  
PROJECT NO. 20988-13CSCV  
DRAWING NO.

**USP**  
SHEET: 2 OF 2





PROJECT NUMBER  
23-110

GOODWILL RETAIL

NEW CONSTRUCTION  
FALCON, CO

303 <sup>llc</sup>  
ARCHITECTURE | DESIGN | SUSTAINABLE LIVING

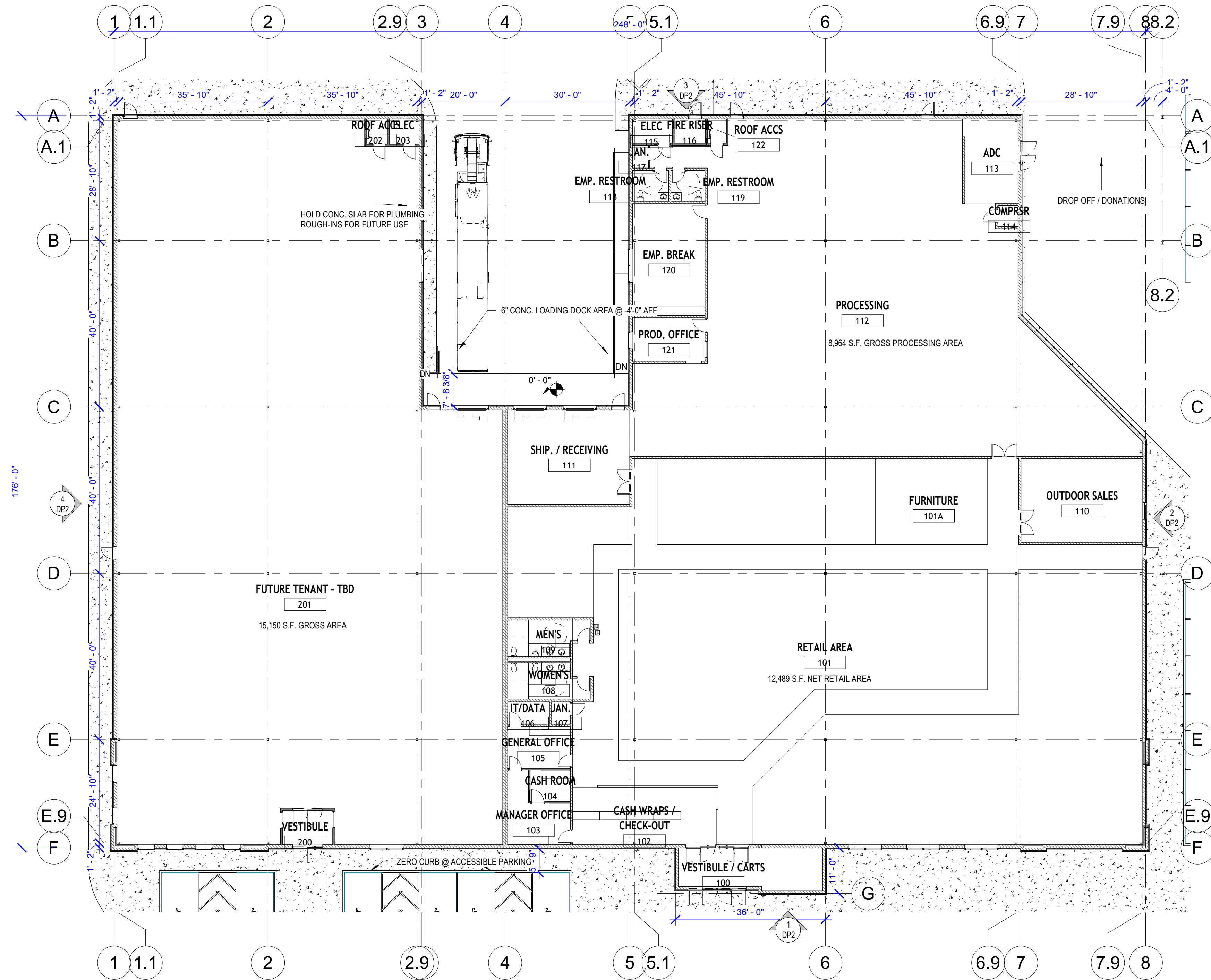
815 S. 25TH ST. #203  
COLORADO SPRINGS, CO 80904  
719.505.6635  
WWW.303LLC.COM

SHEET

DP2

DP - EXTERIOR  
ELEVATIONS





1 OVERALL FLOOR PLAN  
1/16" = 1'-0"

SEAL

DATE  
09.15.2023

ISSUE  
DEVELOPMENT  
PLAN

REVISIONS:

No.	Issuance	Date

OWNERSHIP OF INSTRUMENTS OF  
SERVICE

All Drawings, Reports, Plans, Specifications, Computer  
Files including CAD/BIM files, field information, notes,  
sketches, and other design materials prepared by the  
Architect and his/her consultants as instruments of service  
shall remain the property of the Architect. The Architect  
shall retain all common law, statutory and other reserved  
rights, including the Copyright therein.

PROJECT NUMBER  
23-110

GOODWILL RETAIL  
NEW CONSTRUCTION  
FALCON, CO

303-11c  
ARCHITECTURE | DESIGN | SUSTAINABLE LIVING  
815 S. 25TH ST. #203  
COLORADO SPRINGS, CO 80904  
719.505.6635  
WWW.303LLC.COM

SHEET

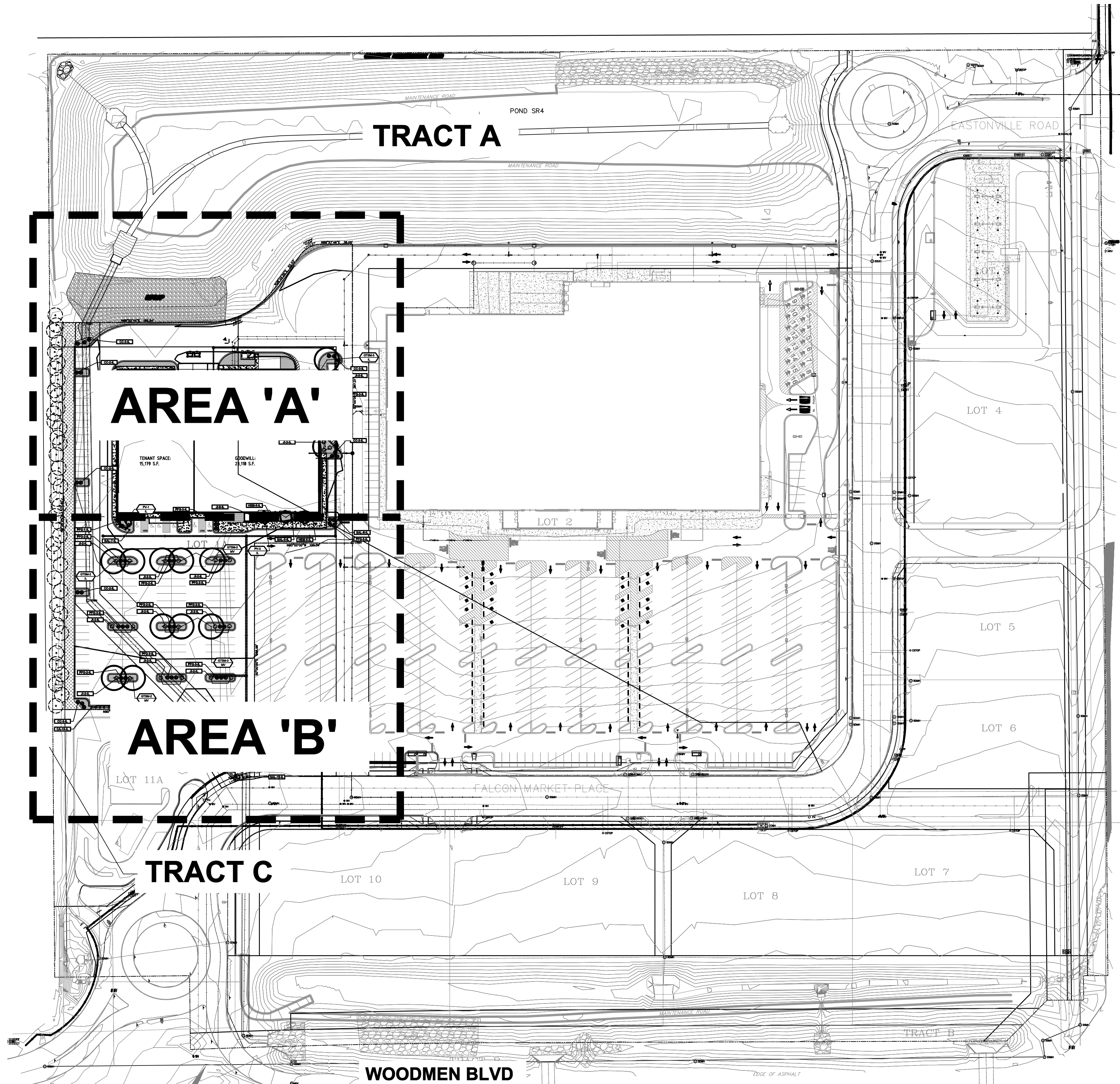
DP1

DP - FLOOR PLAN

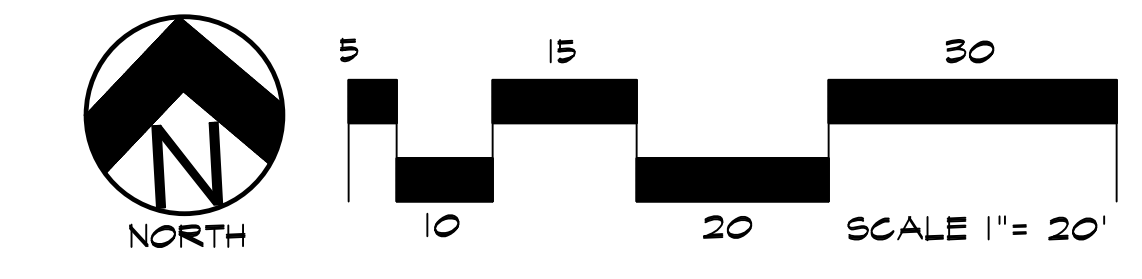








# LANDSCAPE PLAN





Know what's below.  
Call before you dig.

**UTILITIES NOTE**

VERIFY LOCATION AND DEPTH OF ALL UNDERGROUND UTILITIES PRIOR TO START OF WORK. CALL 811 FOR UTILITY LOCATES. TREE TRUNK PLACEMENT SHALL BE 6" MINIMUM DISTANCE FROM ANY GAS OR ELECTRIC AND 10' FROM GAS MAINS RATED AT 150PSI. FOR SANITARY SEWER AND WATER MAINLINES TREES SHALL NOT BE LOCATED WITHIN EASEMENTS AND WITHIN 15' OF ANY MAINLINE. ANY CONFLICT BETWEEN TREE LOCATIONS AND UTILITIES SHOWN ON PLANS SHALL BE RESOLVED WITH GENERAL CONTRACTOR PRIOR TO PLANTING. ALL ELECTRICAL VAULTS AND TRANSFORMERS SHALL BE KEPT CLEAR FROM PLANT MATERIAL PER COLORADO SPRINGS UTILITIES GUIDELINES "LANDSCAPING AROUND ELECTRICAL EQUIPMENT". SEE COLORADO SPRINGS UTILITIES CONSTRUCTION STANDARD DRAWINGS 18-302 FOR SPECIFIC CLEARANCE REQUIREMENTS. ALL SHRUBS TO BE LOCATED 3' CLEAR OF ALL FIRE HYDRANTS AT MATURE SIZE.

**ZONING NOTE**

SITE ZONING: CR

- GENERAL SITE NOTES**
- CONTRACTOR RESPONSIBLE FOR COORDINATING AND INSTALLING ALL SLEEVING REQUIRED FOR LANDSCAPE AND IRRIGATION CONSTRUCTION. COORDINATE WITH GENERAL CONTRACTOR. ALL PLANTING AREAS SHALL RECEIVE SLEEVING. REFER TO PLANTING PLAN FOR ADDITIONAL INFORMATION.
  - THE CONTRACTOR IS SPECIFICALLY CAUTIONED THAT THE LOCATION AND/OR ELEVATION OF EXISTING UTILITIES, AS SHOWN ON THESE PLANS, IS BASED ON RECORDS OF THE VARIOUS UTILITY COMPANIES AND, WHERE POSSIBLE, MEASUREMENTS TAKEN IN THE FIELD. THE INFORMATION IS NOT TO BE RELIED UPON AS BEING EXACT OR COMPLETE. THE CONTRACTOR MUST CALL THE LOCAL UTILITY LOCATION CENTER AT LEAST 48 HOURS BEFORE ANY EXCAVATION TO REQUEST EXACT FIELD LOCATIONS OF THE UTILITIES. PRIOR TO CONSTRUCTION, THE CONTRACTOR SHALL VERIFY PERTINENT LOCATIONS AND ELEVATIONS, ESPECIALLY AT CONNECTION POINTS AND AT POTENTIAL UTILITY CONFLICTS. IT SHALL BE THE RESPONSIBILITY OF THE CONTRACTOR TO RELOCATE ALL EXISTING UTILITIES THAT CONFLICT WITH THE PROPOSED IMPROVEMENTS SHOWN ON THESE PLANS.
  - THE CONTRACTOR SHALL BE RESPONSIBLE FOR OBTAINING ALL NECESSARY PERMITS FOR ALL APPLICABLE AGENCIES.
  - ALL MATERIALS, WORKMANSHIP, AND CONSTRUCTION OF PUBLIC IMPROVEMENTS SHALL MEET OR EXCEED THE STANDARDS AND SPECIFICATIONS SET FORTH IN LOCAL CITY STANDARDS AND SPECIFICATIONS AND APPLICABLE STATE AND FEDERAL REGULATIONS. WHERE THERE IS CONFLICT BETWEEN THESE PLANS AND THE SPECIFICATIONS, OR ANY APPLICABLE STANDARDS, THE HIGHER QUALITY STANDARD SHALL APPLY. ALL WORK SHALL BE INSPECTED AND APPROVED BY THE APPROPRIATE GOVERNING AGENCIES.
  - THE CONTRACTOR SHALL HAVE ONE (1) SIGNED COPY OF THE APPROVED CONSTRUCTION DOCUMENTS, ONE (1) COPY OF THE APPROPRIATE STANDARDS AND SPECIFICATIONS, AND A COPY OF ANY PERMITS AND EXTENSION AGREEMENTS NEEDED FOR THE JOB, ON-SITE AT ALL TIMES.
  - ALL REFERENCES TO ANY PUBLISHED STANDARDS SHALL REFER TO THE LATEST REVISION OF SAID STANDARD, UNLESS SPECIFICALLY STATED OTHERWISE.
  - THE CONTRACTOR SHALL BE RESPONSIBLE FOR KEEPING ROADWAYS FREE AND CLEAR OF ALL CONSTRUCTION DEBRIS TRACKED FROM THE SITE.
  - THE CONTRACTOR SHALL PROTECT ALL SITE ELEMENTS DURING CONSTRUCTION INCLUDING, BUT NOT LIMITED TO: CONCRETE FLATWORK, CURB & GUTTER, PAVING, SIGNS, TREES, UTILITIES, ETC. ANY DAMAGE TO INFRASTRUCTURE SHALL BE RESPONSIBILITY OF CONTRACTOR TO REPAIR AND/OR REPLACE IN EQUAL OR BETTER CONDITION. ANY DAMAGE SHALL BE DOCUMENTED THE DAY IT OCCURS AND REPORTED TO THE CLIENT WITHIN 12 HOURS. COORDINATE WITH GENERAL CONTRACTOR.
  - CONTRACTOR IS RESPONSIBLE FOR SUBMITTING LANDSCAPE AND IRRIGATION SUBMITTALS TO OWNER FOR APPROVAL PRIOR TO START OF ANY WORK.

**LAYOUT NOTE**

CONTRACTOR IS RESPONSIBLE FOR INSTALLING ALL LANDSCAPE SHOWN ON THIS PLAN. ANY DEVIATIONS FROM THIS PLAN ARE TO BE APPROVED BY OWNERS REPRESENTATIVE OR LANDSCAPE ARCHITECT. DEVIATIONS FROM THE APPROVED PLAN MAY REQUIRE APPROVAL BY EL PASO COUNTY AND OWNER REPRESENTATIVE.

CODE REQUIREMENTS					
LANDSCAPE SETBACKS (LS): NOT REQUIRED					
STREET NAME OR ZONE BOUNDARY (ELEV.)	STREET CLASSIFICATION	WIDTH (FT.) REQ./PROV.	LINEAR FOOTAGE	TREE/FEET REQUIRED	NO. OF TREES REQ./PROVIDED
MOTOR VEHICLE LOTS (MV)					
NO. OF VEHICLE SPACES PROVIDED	SHADE TREES (1/15 SPACES) REQ./PROV.	VEHICLE LOT FRONTAGE(S)	2/3 LENGTH OF FRONTAGE (FT)		
150	10/10	NONE			
MIN. 3' SCREENING PLANTS REQ./PROV.	EVERGREEN PLANTS REQ. 50%/PROV.				
INTERNAL LANDSCAPING (IL)					
INTERNAL LANDSCAPE AREA INCLUDES ALL LANDSCAPE AREAS NOT INCLUDING SETBACKS, BUFFERS OR MOTOR VEHICLE ISLANDS.					
NET SITE AREA (SF) (LESS PUBLIC R.O.W.)	PERCENT MINIMUM INTERNAL AREA (5%)	INTERNAL AREA (SF) REQ./PROV.	INTERNAL TREES (1/500 SF)		
159,685 SF	NON-RESIDENTIAL	7,984 SF/ 8000	187		
SHRUB SUBSTITUTES REQ./PROV.	INTERNAL PLANT ABBR. DENOTED ON PLAN		PERCENT GROUND PLANE VEG. REQ./PROV.		
90/90	IL		75%/75%		
LANDSCAPE BUFFERS AND SCREENS (LB)					
STREET NAME OR PROPERTY LINE (ELEV.)	LINEAR FOOTAGE	SETBACK BUFFER REQ. / PROV.	BUFFER TREES (1/25') REQ./PROV.	EVERGREEN TREES (1/3) REQ./PROV.	
WEST	478	15/15	EXISTING IN TRACT C	EXISTING IN TRACT C	

**DOCUMENT NOTE**

IRRESPECTIVE OF ANY OTHER TERM IN THIS DOCUMENT, LANDSCAPE ARCHITECT SHALL NOT CONTROL OR BE RESPONSIBLE FOR CONSTRUCTION MEANS, METHODS, TECHNIQUES, SCHEDULES, SEQUENCES OR PROCEDURES, OR FOR CONSTRUCTION SAFETY OR ANY OTHER RELATED PROGRAMS, OR FOR ANOTHER PARTIES' ERRORS OR OMISSIONS OR FOR ANOTHER PARTIES FAILURE TO COMPLETE THEIR WORK OR SERVICES IN ACCORDANCE WITH LANDSCAPE ARCHITECT'S DOCUMENTS.

NOT FOR CONSTRUCTION	JOB NUMBER	1116-23
	REVISIONS	
	10-25-23	PER COMMENTS
	12-21-23	PER COMMENTS
ORIGINAL DATE		9-15-23
DRAWN BY		
DESCRIPTION		LANDSCAPE PLAN
SHEET NO.		L1.1

**HIGHER GROUND DESIGNS, INC.**  
LANDSCAPE ARCHITECTURE, PLANNING & IRRIGATION DESIGN  
5350 NORTH ACADEMY BLVD., STE. 207  
COLORADO SPRINGS, CO 80916  
Phone 719-477-1646  
Fax 719-586-1122



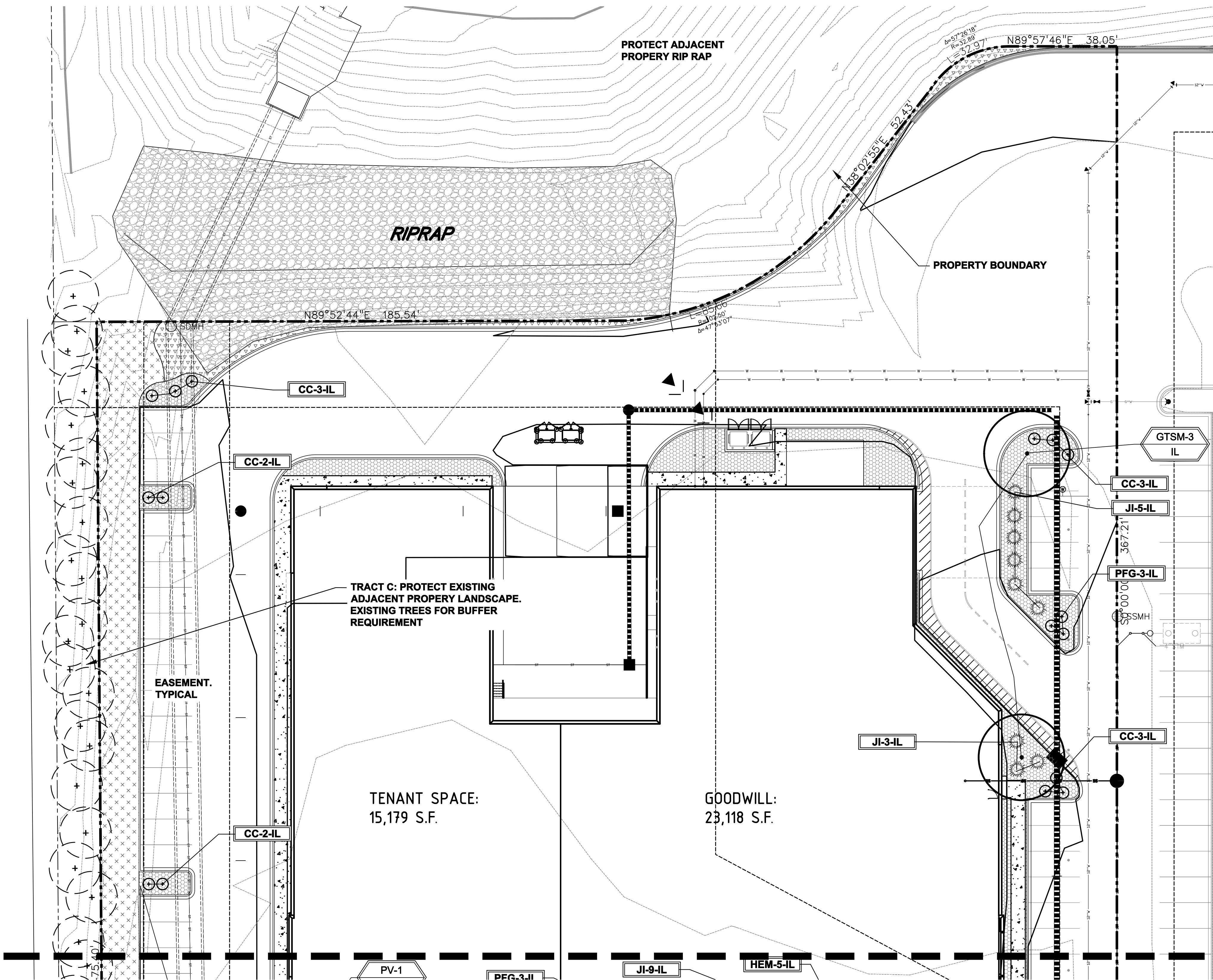
**HIGHER GROUND DESIGNS**

**LOT 1 - FALCON MARKETPLACE**  
**WOODMEN & MERIDIAN**  
**EL PASO COUNTY, COLORADO**

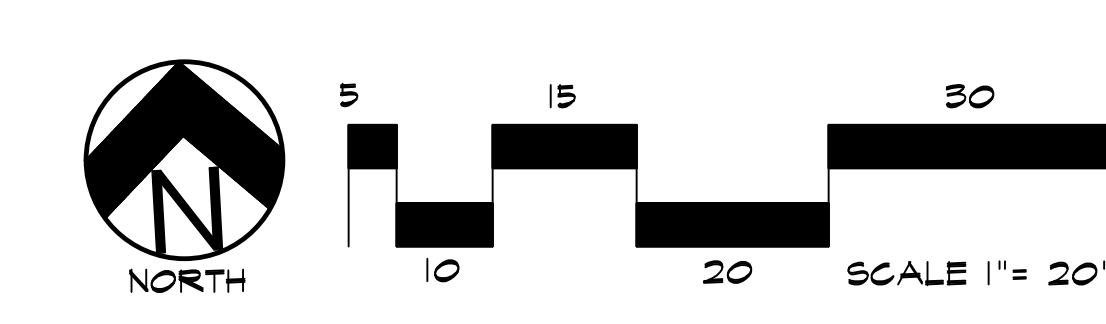
THESE DRAWINGS ARE THE PROPERTY OF HIGHER GROUND DESIGNS, INC. AND SHALL NOT BE REPRODUCED OR COPIED IN ANY MANNER WITHOUT WRITTEN AUTHORIZATION BY HIGHER GROUND DESIGNS, INC.

OWNER: DEANAM L BOOKER  
1460 GARDEN OF THE GODS ROAD  
COLORADO SPRINGS, CO 80907  
719-635-4483 lboker@goodwillcolorado.org





# LANDSCAPE PLAN - AREA 'A'



**UTILITIES NOTE**

VERIFY LOCATION AND DEPTH OF ALL UNDERGROUND UTILITIES PRIOR TO START OF WORK. CALL 811 FOR UTILITY LOCATES. TREE TRUNK PLACEMENT SHALL BE 6" MINIMUM DISTANCE FROM ANY GAS OR ELECTRIC AND 10" FROM GAS MAINS RATED AT 150PSI. FOR SANITARY SEWER AND WATER MAINLINES TREES SHALL NOT BE LOCATED WITHIN EASEMENTS AND WITHIN 15' OF ANY MAINLINE. ANY CONFLICT BETWEEN TREE LOCATIONS AND UTILITIES SHOWN ON PLANS SHALL BE RESOLVED WITH GENERAL CONTRACTOR PRIOR TO PLANTING. ALL ELECTRICAL VAULTS AND TRANSFORMERS SHALL BE KEPT CLEAR FROM PLANT MATERIAL PER COLORADO SPRINGS UTILITIES GUIDELINES "LANDSCAPING AROUND ELECTRICAL EQUIPMENT". SEE COLORADO SPRINGS UTILITIES CONSTRUCTION STANDARD DRAWINGS 18-302 FOR SPECIFIC CLEARANCE REQUIREMENTS. ALL SHRUBS TO BE LOCATED 3' CLEAR OF ALL FIRE HYDRANTS AT MATURE SIZE.

PLANT SCHEDULE						
Symbol	Abbr.	Quantity	Botanical Name	Common Name	Mature Wdth/Hght	Size
DECIDUOUS TREES:						
	GTSM	12	Gleditsia triacanthos 'Shademaster'	Shademaster Honeylocust	30'X25'	1-1/2" cal.
	MS	1	Malus 'Spring Snow'	Spring Snow Crabapple	15'X15'	1-1/2" cal.
	PV	4	Prunus virginiana 'Sucker Punch'	Canada Red Cherry	15'X15'	1-1/2" cal.
EVERGREEN SHRUBS:						
	JCS	6	Juniperus x chinensis 'Spartan'	Spartan Juniper	3-4' x 12-15'	5 gal.
	JI	39	Juniperus sabina	Buffalo Juniper	6-8' x 12-18'	5 gal.
DECIDUOUS SHRUBS:						
	CC	18	Caryopteris x clandonensis 'Drk Knt'	Dark Knight Blue Mist Spirea	2' x 2-4'	5 gal.
	PFG	39	Potentilla fruticosa 'Gold Finger'	Gold Finger Potentilla	4-5' x 3-4'	5 gal.
ORNAMENTAL GRASSES:						
	CA	15	Calamagrostis acutiflora 'Karl Foerster'	Feather Reed Grass	1-3' / 2-3'	#1 CONT.
PERENNIALS:						
	HEM	10	Hemerocallis 'Red Magic'	Red Magic Daylily	18" x 12"	#1 CONT.
	SAL	28	Salvia nemorosa 'May Night'	May Night Salvia	24" x 24"	#1 CONT.
NOTE: ALL QUANTITIES SHALL BE PER PLAN. LEGEND SF ARE FOR REFERENCE ONLY.						

GROUND COVER LEGEND		
SYMBOL	DESCRIPTION	APPROX. SF
	Denver Granite Rock: 3/4" Diameter, 3" Depth (with weed barrier) Submit sample to Landscape Architect prior to ordering material	8,662 SF
	Rock Cobble: Arkansas Tan - 2-4" Diameter, 3" Depth (with weed barrier) Submit sample to Landscape Architect prior to ordering material	1,236 SF
	Seed Grass. Seed Mix 'A'. Refer to notes. Submit SPEC to Landscape Architect prior to ordering material	6,410 SF
	Steel Edger. Refer to notes Submit sample to Landscape Architect prior to ordering material	
	Protect Existing Tree	
NOTE: ALL QUANTITIES SHALL BE PER PLAN. LEGEND SF ARE FOR REFERENCE ONLY.		

**GRADE NOTE**

GRADE SHALL BE ESTABLISHED BASED ON GRADING PLAN BY OTHERS, AND FOR LANDSCAPE MATERIALS PER PLAN. FINAL SOIL GRADE FOR 5-12" DIAMETER ROCK AREAS SHALL BE 4" BELOW TOP OF SIDEWALK/CURB/PAVING. AT ALL OTHER ROCK AREAS GRADE SHALL BE 3" BELOW SIDEWALK/CURB. AT SOOISED AREAS GRADE SHALL BE 1" BELOW TOP OF SIDEWALK/CURB.

**DOCUMENT NOTE**

IRRESPECTIVE OF ANY OTHER TERM IN THIS DOCUMENT, LANDSCAPE ARCHITECT SHALL NOT CONTROL OR BE RESPONSIBLE FOR CONSTRUCTION MEANS, METHODS, TECHNIQUES, SCHEDULES, SEQUENCES OR PROCEDURES, OR FOR CONSTRUCTION SAFETY OR ANY OTHER RELATED PROGRAMS, OR FOR ANOTHER PARTIES' ERRORS OR OMISSIONS OR FOR ANOTHER PARTIES FAILURE TO COMPLETE THEIR WORK OR SERVICES IN ACCORDANCE WITH LANDSCAPE ARCHITECT'S DOCUMENTS.

NOT FOR CONSTRUCTION	JOB NUMBER	1116-23
	REVISIONS	
	10-25-23	PER COMMENTS
	12-21-23	PER COMMENTS
	ORIGINAL DATE	9-15-23
	DRAWN BY	
	DESCRIPTION	LANDSCAPE PLAN
	SHEET NO.	L1.2

**HIGHER GROUND DESIGNS, INC.**  
LANDSCAPE ARCHITECTURE, PLANNING & IRRIGATION DESIGN

5350 NORTH ACADEMY BLVD., STE. 207  
COLORADO SPRINGS, CO 80916  
Phone 719-577-1646  
Fax 719-588-1122

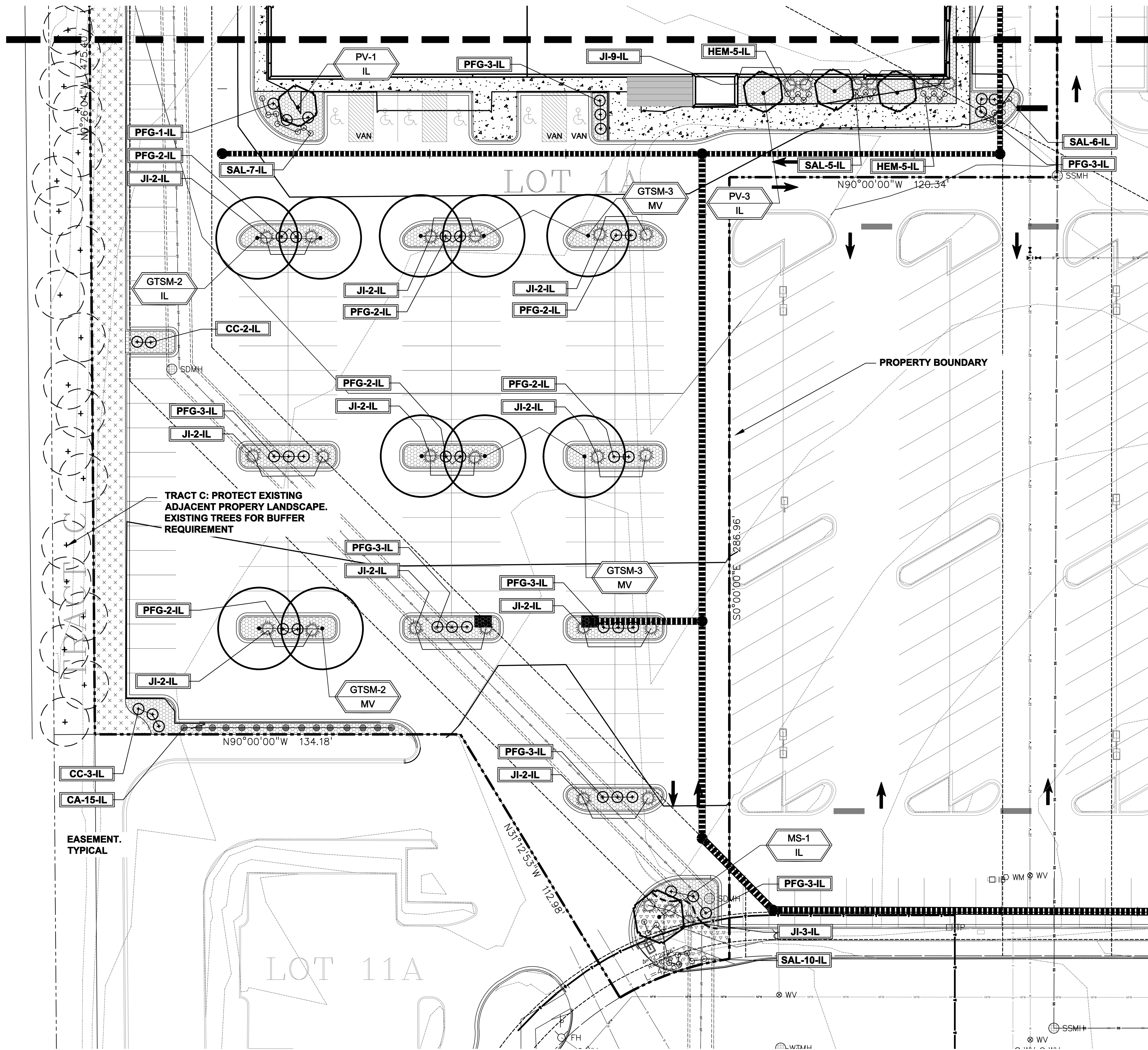
**HIGHER GROUND DESIGNS**

**LOT 1 - FALCON MARKETPLACE**  
**WOODMEN & MERIDIAN**  
**EL PASO COUNTY, COLORADO**

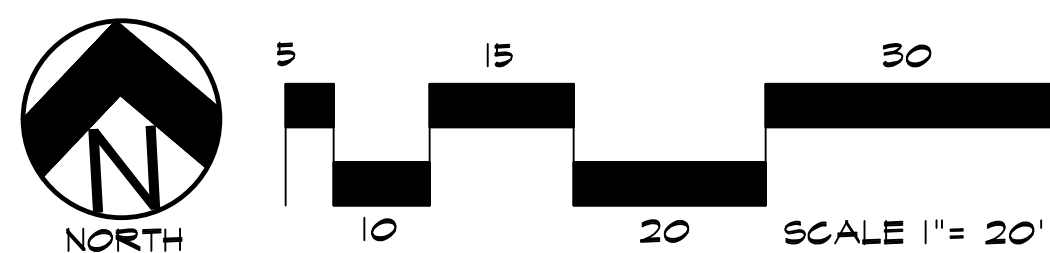
THESE DRAWINGS ARE THE PROPERTY OF HIGHER GROUND DESIGNS, INC. AND SHALL BE USED ONLY FOR THE PROJECT AND SITE WITHOUT WRITTEN AUTHORIZATION BY HIGHER GROUND DESIGNS, INC.

OWNER: BOOKER  
DESIGNER: BOOKER  
1469 GARDEN OF THE GODS ROAD  
COLORADO SPRINGS, CO 80907  
719-635-4483 bbooker@goodwillcolorado.org





# LANDSCAPE PLAN - AREA 'B'



**UTILITIES NOTE**

VERIFY LOCATION AND DEPTH OF ALL UNDERGROUND UTILITIES PRIOR TO START OF WORK. CALL 811 FOR UTILITY LOCATES. TREE TRUNK PLACEMENT SHALL BE 6" MINIMUM DISTANCE FROM ANY GAS OR ELECTRIC AND 10" FROM GAS MAINS RATED AT 150PSI. FOR SANITARY SEWER AND WATER MAINLINES TREES SHALL NOT BE LOCATED WITHIN EASEMENTS AND WITHIN 15' OF ANY MAINLINE. ANY CONFLICT BETWEEN TREE LOCATIONS AND UTILITIES SHOWN ON PLANS SHALL BE RESOLVED WITH GENERAL CONTRACTOR PRIOR TO PLANTING. ALL ELECTRICAL VAULTS AND TRANSFORMERS SHALL BE KEPT CLEAR FROM PLANT MATERIAL PER COLORADO SPRINGS UTILITIES GUIDELINES "LANDSCAPING AROUND ELECTRICAL EQUIPMENT". SEE COLORADO SPRINGS UTILITIES CONSTRUCTION STANDARD DRAWINGS 18-302 FOR SPECIFIC CLEARANCE REQUIREMENTS. ALL SHRUBS TO BE LOCATED 3' CLEAR OF ALL FIRE HYDRANTS AT MATURE SIZE.

GROUND COVER LEGEND	
SYMBOL	DESCRIPTION
	Denver Granite Rock: 3/4" Diameter, 3" Depth (with weed barrier) Submit sample to Landscape Architect prior to ordering material
	Rock Cobble: Arkansas Tan - 2-4" Diameter, 3" Depth (with weed barrier) Submit sample to Landscape Architect prior to ordering material
	Seed Grass, Seed Mix 'A'. Refer to notes. Submit SPEC to Landscape Architect prior to ordering material
	Steel Edger. Refer to notes Submit sample to Landscape Architect prior to ordering material
NOTE: ALL QUANTITIES SHALL BE PER PLAN. LEGEND SF ARE FOR REFERENCE ONLY.	

**DOCUMENT NOTE**

IRRESPECTIVE OF ANY OTHER TERM IN THIS DOCUMENT, LANDSCAPE ARCHITECT SHALL NOT CONTROL OR BE RESPONSIBLE FOR CONSTRUCTION MEANS, METHODS, TECHNIQUES, SCHEDULES, SEQUENCES OR PROCEDURES, OR FOR CONSTRUCTION SAFETY OR ANY OTHER RELATED PROGRAMS, OR FOR ANOTHER PARTIES' ERRORS OR OMISSIONS OR FOR ANOTHER PARTIES FAILURE TO COMPLETE THEIR WORK OR SERVICES IN ACCORDANCE WITH LANDSCAPE ARCHITECT'S DOCUMENTS.

NOT FOR CONSTRUCTION	JOB NUMBER	1116-23
	REVISIONS	
	10-25-23	PER COMMENTS
	12-21-23	PER COMMENTS
	ORIGINAL DATE	9-15-23
	DRAWN BY	LANDSCAPE PLAN
SHEET NO.		L1.3

LOT 1 - FALCON MARKETPLACE  
WOODMEN & MERIDIAN  
EL PASO COUNTY, COLORADO

OWNER: BOOKER  
1680 GARDEN OF THE GODS ROAD  
COLORADO SPRINGS, CO 80907  
719-635-4483 bbooker@godwillcolorado.org

THESE DRAWINGS ARE THE PROPERTY OF  
HIGHER GROUND DESIGNS, INC. AND SHALL  
BE USED ONLY FOR THE PROJECT AND  
WITHOUT WRITTEN AUTHORIZATION BY  
HIGHER GROUND DESIGNS, INC.



**HIGHER GROUND DESIGNS, INC.**  
LANDSCAPE ARCHITECTURE, PLANNING & IRRIGATION DESIGN

5350 NORTH ACADEMY BLVD., STE. 207  
COLORADO SPRINGS, CO 80916  
Phone 719-477-1646  
Fax 719-586-1122



MAINTENANCE NOTE

ON-GOING MAINTENANCE DURING CONSTRUCTION:

THE CONTRACTOR SHALL BE RESPONSIBLE FOR PROVIDING ON-GOING MAINTENANCE OF ALL COMPLETED LANDSCAPE AND IRRIGATION WORK AS DEFINED UNDER CONTRACT WITH OWNER.

BEGIN MAINTENANCE IMMEDIATELY AFTER PLANTING AND CONTINUE UNTIL LANDSCAPE WORK IS COMPLETED, ACCEPTED BY OWNER, AND IF REQUESTED A FORMAL MAINTENANCE PERIOD IS INITIATED. MAINTAIN LAWNS BY WATERING, FERTILIZING, WEEDING, MOWING, TRIMMING AND OTHER OPERATIONS SUCH AS ROLLING, REGARDING, REPLANTING AS REQUIRED THROUGH CONSTRUCTION PERIOD. REMULCH WITH NEW MULCH IN AREAS WHERE MULCH HAS BEEN DISTURBED BY CONSTRUCTION OPERATIONS SUFFICIENTLY TO NULLIFY ITS PURPOSE. CONTRACTOR SHALL REPAIR SEEDED AREAS DAMAGED BY TRAFFIC AND/OR VANDALISM DURING THE CONSTRUCTION PERIOD.

IF THE IRRIGATION SYSTEM IS NOT AVAILABLE FOR PROPER WATERING AT THE TIME OF INSTALLATION, PROVIDE AND MAINTAIN TEMPORARY PIPING, HOSES, AND LAWN WATERING EQUIPMENT AS REQUIRED TO CONVEY WATER FROM SOURCES AND TO KEEP THE LAWN AREAS UNIFORMLY MOIST AS REQUIRED FOR PROPER GROWTH. FAILURE OF THE IRRIGATION SYSTEM SHALL NOT RELIEVE THE INSTALLER OF THE RESPONSIBILITY TO PROVIDE THE REQUIRED WATER. COORDINATE WITH OWNER.

ONE-YEAR WARRANTY

AS AGREED WITH OWNER, CONTRACTOR SHALL PROVIDE ONE-YEAR WARRANTY ON ALL PLANT MATERIAL, GRASSES AND IRRIGATION SYSTEM. REPLACEMENT OF DEAD, DISEASED OR SUBSTANTIALLY DAMAGED PLANT MATERIALS SHALL BE OF THE SAME OR SIMILAR TYPE AS SET FORTH IN THE LANDSCAPE PLAN. REPLACEMENT SHALL BE MADE IN A TIME PERIOD NOT EXCEEDING 15 DAYS. PLANT MATERIAL NEEDING REPLACEMENT DURING WINTER MONTHS SHALL BE REPLACED AT THE START OF THE NEXT GROWING SEASON.

THE OWNER OF THIS PROPERTY AND ANY FUTURE OWNERS SHALL BE RESPONSIBLE FOR THE PROPER LANDSCAPE AND IRRIGATION SYSTEM MAINTENANCE OF THIS SITE AND ANY RIGHT-OF-WAY AREAS BETWEEN THE CURB AND PROPERTY BOUNDARIES OF THIS SITE. MAINTENANCE OF THIS INCLUDES, BUT IS NOT LIMITED TO, IRRIGATION INSPECTIONS AND ADJUSTMENTS, IRRIGATION SYSTEM SHUT DOWN AND START UP, IRRIGATION LEAK REPAIR, LANDSCAPE WEEDING, MOWING, SEEDING, FERTILIZING, WOOD MULCH AND ROCK ADDITIONS, PRUNING AND PLANT MATERIAL REPLACEMENTS. ALL MAINTENANCE SHALL BE DONE IN ACCORDANCE WITH THE ALCC SPECIFICATIONS HANDBOOK REV EDITION 2007. OWNER SHOULD CONTACT LANDSCAPE CONTRACTOR OR LANDSCAPE ARCHITECT REGARDING ANY QUESTIONS RELATING TO THE LANDSCAPE OR IRRIGATION SYSTEM.

SOIL PREP NOTES

SOIL PREPARATION FOR UNDISTURBED OR COMPACTED PLANTING AREAS:

- A. IF UNDISTURBED RIP EXISTING SOIL TO A DEPTH OF NINE (9) INCHES MINIMUM IN ONE DIRECTION USING AN AGRICULTURAL RIPPER WITH TINES SPACED NO FURTHER THAN EIGHTEEN (18) INCHES APART OR TILL TO 6" DEPTH. AREAS ADJACENT TO WALKS, STRUCTURES, CURBS, ETC., WHERE THE USE OF LARGE MECHANICAL EQUIPMENT IS DIFFICULT SHALL BE WORKED WITH SMALLER EQUIPMENT OR BY HAND.
- B. REMOVE ALL RUBBLE, STONES AND EXTRANEOUS MATERIAL OVER TWO (2) INCHES IN DIAMETER FROM THE SITE.

SEEDING NOTES

SEED MIX 'A': NATIVE SEED TO BE EL PASO COUNTY CONSERVATION DISTRICT ALL-PURPOSE SEED MIX. REFER TO CHART. SEED TO BE APPLIED AT 4LBS/1,000 SF USING DRILL SEED PROCESS OR HYDRO-SEED PROCESS MINIMUM OR PER EL PASO GUIDELINES. SOIL SHALL BE AMENDED BREW-GRO BIOCOMP CLASS 1 (OR CITY APPROVED EQUAL) AT 2 C.Y./1000 SF FILLED INTO TOP 4-6" OF SOIL PRIOR TO SEEDING. REFER TO CHART 5-1 FOR IRRIGATED MIX.

DEPENDING ON WEATHER, SEED SHALL BE INSTALLED WITHIN THE FOLLOWING TIME FRAMES: SEPTEMBER 1 UNTIL CONSISTENT GROUND FREEZE FOR SPRING ESTABLISHMENT (DORMANT SEEDING); SPRING THAW UNTIL JUNE 1 FOR SPRING AND SUMMER ESTABLISHMENT (ACTIVE SEEDING).

FOR HYDRO-SEEDING ALL SEEDED AREAS SHALL RECEIVE NOT LESS THAN 1 TON PER ACRE (2000 LBS) OF VIRGIN WOOD CELLULOSE HYDRO-MULCH AND 100 LBS PER ACRE OF ORGANIC TACKIFIER.

SEEDED LANDSCAPE AREAS SHALL HAVE NO BARE AREAS LARGER THAN SIX (6) SQUARE INCHES 15 DAYS AFTER GERMINATION.

DRILL SEEDING: SEEDING EQUIPMENT USED FOR APPLYING SEED MIXTURES SHALL BE DESIGNED, MODIFIED OR EQUIPPED TO REGULATE THE APPLICATION RATE AND PLANTING DEPTH OF THE SEED MIXTURE. SEED SHALL BE UNIFORMLY DISTRIBUTED IN THE DRILL HOPPER DURING THE DRILLING OPERATION. A RANGELAND DRILL CAPABLE OF MIXING DIFFERENT SIZES AND WEIGHTS OF SEEDS SHALL BE USED. THE DRILL SHALL BE EQUIPPED WITH DOUBLE DISK FURROW OPENERS, DEPTH BANDS, PRESS WHEELS OR DRAG CHAINS.

THE SEED SHALL BE DRILLED APPROXIMATELY 3/4" INCH BELOW THE SOIL SURFACE. HALF OF THE TOTAL RATE OF SEED APPLICATION SHALL BE DRILLED IN 1 DIRECTION, WITH THE REMAINDER OF THE SEED RATE DRILLED AT 90 DEGREES FROM THE FIRST DIRECTION.DO NOT DRILL OR SOW SEED DURING HIGH WINDS OR WHEN THE GROUND IS FROZEN OR OTHERWISE UNABLE TO BE WORKED.

ALL SEEDED AREAS LESS THAN 3:1 SHALL RECEIVE NO LESS THAN 2 TONS PER ACRE (400 LBS) OF CERTIFIED WEED FREE STRAW MULCH. STRAW MULCH SHALL BE APPLIED IN A UNIFORM MANNER BY MULCH SPREADER OR BY HAND. STRAW MULCH SHALL BE CRIMPED OR ANCHORED INTO THE SEEDBED IMMEDIATELY FOLLOWING SPREADING BY USING A MULCH TILLER (CRIMPER). MULCH TILLERS SHALL HAVE ROUND, NOTCHED-BLADES SPACED 8-INCHES APART (MIN.) AND SHALL HAVE SUFFICIENT WEIGHT TO FORCE THE VEGETATIVE MULCH A MINIMUM DEPTH OF 3-INCHES INTO THE SOIL. ALL MULCH TILLING SHALL BE DONE PERPENDICULAR TO THE FLOW-LINE OF THE SLOPE (ALONG CONTOURS). HAND CRIMPING SHALL BE PERFORMED ON AREAS WHERE MECHANICAL METHODS CANNOT BE USED.

MULCH SHALL BE APPLIED TO SEEDED AREAS (INCLUDING DAMP GROUND) WITHIN 24 HOURS FOLLOWING THE COMPLETION OF SEEDING OPERATIONS FOR THE AREA. MULCHING SHALL NOT BE PERFORMED DURING ADVERSE WEATHER CONDITIONS OR WHEN WIND PREVENTS UNIFORM DISTRIBUTION. APPLICATION SHALL BE IN A MANNER TO NOT SERIOUSLY DISTURB THE SEEDBED SURFACE.

NATIVE GRASS MANAGEMENT NOTE

ON-GOING MAINTENANCE RECOMMENDATIONS FOR NATIVE GRASS

WELL ESTABLISHED SEEDED LAWN SHALL BE A HEALTHY, WELL-ROOTED, EVEN-COLORED, AND FREE OF WEEDS, BARE AREAS, AND SURFACE IRREGULARITIES.

THE MATURE HEIGHT OF NATIVE GRASS IS EXPECTED TO BE MAINTAINED AT ABOUT 6" HIGH AND MOWED TO 3" ONCE ANNUALLY IN THE LATE WINTER OR EARLY SPRING, AND IRRIGATED ON REDUCED WATER SCHEDULE.

THE SUCCESS OF PERMANENT NATIVE GRASS SEEDING CAN RARELY BE EVALUATED ACCURATELY PRIOR TO THE END OF ITS SECOND FULL GROWING SEASON. SEEDING SUCCESS DEPENDS UPON CONTROL OF WEED COMPETITION DURING THE FIRST TWO GROWING SEASONS. IN ADDITION, THE SITE SHOULD BE MONITORED ANNUALLY FOR UNDESIRABLE PLANT SPECIES.

THE SITE SHOULD BE MONITORED FOR UNDESIRABLE PLANT SPECIES. IF WEED CONTROL NEEDS TO BE PERFORMED DURING THE FIRST YEAR OF PLANT GROWTH, UTILIZE ONE OF TWO METHODS. REGARDLESS OF WHICH METHOD OF WEED CONTROL IS USED, COMPLETE BEFORE FLOWERING OF WEED SEED HEADS. SINCE WEED SPECIES MAY DEVELOP MATURE SEED HEADS AT DIFFERENT TIME OF THE GROWING SEASON, WEED CONTROL EFFORTS WILL BE REQUIRED.

- 1. HAND PULL NOXIOUS WEEDS, REMOVING AS MUCH OF THE ROOT SYSTEM AS POSSIBLE.
- 2. USE WEED EATERS TO SELECTIVELY CUT OFF THE SEED HEADS OF NOXIOUS WEEDS. USE SELECTIVE BROADLEAF HERBICIDE SUCH AS 2-4-D WITH A BACKPACK SPRAYER OR WICK APPLICATOR. BE CAREFUL NOT TO APPLY HERBICIDE ON MORE THAN ONE SQUARE FOOT IN ANY GIVEN AREA. CONTRACTOR TO NOTIFY OWNER'S AUTHORIZED REPRESENTATIVE OF ANY SUSPECTED SOIL PROBLEMS AT THE END OF THE FIRST GROWING SEASON. BROADBAND APPLICATIONS OF HERBICIDE CAN BE COMPLETED AFTER NATIVE GRASS SPECIES REACH MATURE HEIGHT.

UTILITIES NOTE

VERIFY LOCATION AND DEPTH OF ALL UNDERGROUND UTILITIES PRIOR TO START OF WORK. CALL 811 FOR UTILITY LOCATES. TREE TRUNK PLACEMENT SHALL BE 6' MINIMUM DISTANCE FROM ANY GAS OR ELECTRIC AND 10' FROM GAS MAINS RATED AT 150PSI. FOR SANITARY SEWER AND WATER MAINLINES TREES SHALL NOT BE LOCATED WITHIN EASEMENTS AND WITHIN 15' OF ANY MAINLINE. ANY CONFLICT BETWEEN TREE LOCATIONS AND UTILITIES SHOWN ON PLANS SHALL BE RESOLVED WITH GENERAL CONTRACTOR PRIOR TO PLANTING. ALL ELECTRICAL VAULTS AND TRANSFORMERS SHALL BE KEPT CLEAR FROM PLANT MATERIAL PER COLORADO SPRINGS UTILITIES GUIDELINES "LANDSCAPING AROUND ELECTRICAL EQUIPMENT". SEE COLORADO SPRINGS UTILITIES CONSTRUCTION STANDARD DRAWINGS 18-302 FOR SPECIFIC CLEARANCE REQUIREMENTS. ALL SHRUBS TO BE LOCATED 3' CLEAR OF ALL FIRE HYDRANTS AT MATURE SIZE.

INSTALLATION NOTES

REMOVE EXISTING TREES, DEBRIS AND WEEDS FROM SITE PRIOR TO CONSTRUCTION (AS SHOWN PER PLAN).

LANDSCAPE CONTRACTOR IS RESPONSIBLE FOR MAINTAINING THE SITE DURING CONSTRUCTION. WEEDS AND TRASH SHALL BE REMOVED DAILY AS REQUIRED.

EXISTING TOPSOIL TO BE STOCKPILED ON-SITE AND USED DURING CONSTRUCTION TO ESTABLISH GRADES WITHIN LANDSCAPE AREAS AS SHOWN PER PLAN.

CONTRACTOR SHALL REFER TO ASSOCIATED LANDSCAPE CONTRACTORS OF COLORADO HANDBOOK (ALCC) , 2007 REVISED EDITION FOR ALL CONSTRUCTION FOR THIS SITE. CONTACT OWNER/LANDSCAPE ARCHITECT FOR QUESTIONS.

QUANTITIES SHOWN IN PLANT SCHEDULE ARE FOR CONVENIENCE ONLY. CONTRACTOR IS RESPONSIBLE FOR INSTALLING ALL PLANT MATERIAL PER PLAN. LANDSCAPE CONTRACTOR SHALL BE RESPONSIBLE FOR ALL THEFTS OR DAMAGE TO PLANT MATERIAL ONCE PLANT MATERIAL IS DELIVERED TO JOB SITE.

LANDSCAPE ARCHITECT SHALL HAVE OPPORTUNITY TO INSPECT AND APPROVE ALL TREES AND ALL 1-15 GALLON MATERIAL AT JOB SITE PRIOR TO PLANTING, INCLUDING PLACEMENT INSPECTION.

ALL EDGING SEPARATING GRASS AND ROCK/MULCH AREAS TO BE GREEN PRO-STEEL OR APPROVED EQUAL. EDGING TO BE EXPOSED 1/2" +/- ABOVE FINISHED GRADES. INSTALL PER MANUFACTURE RECOMMENDATIONS. NO EDGING BETWEEN ROCK MULCHES.

ALL ROCK COVER AREAS ONLY TO BE PREPARED WITH LANDSCAPE FABRIC WITH STAPLES AT 5' O.C. FABRIC SEAMS TO BE OVERLAPPED 6" MIN. AND SECURED WITH STAPLES.

GROUND COVER SHALL BE CONTINUOUS UNDER ALL SHRUBS THROUGHOUT PROJECT SITE.

TREES AND SHRUBS TO RECEIVE ORGANIC MULCH PER DETAILS, INCLUDING ROCK AREAS-SEE DETAILS. ORGANIC MULCH TO BE 'CASCADE SHREDDED CEDAR' WITH NO LANDSCAPE FABRIC AND 4" DEPTH.

DO NOT PLANT SHRUBS OR TREES OF INCOMPATIBLE WATER REQUIREMENTS IMMEDIATELY ADJACENT TO ONE ANOTHER.

PLANT BACKFILL SHALL BE 70% NATIVE ON-SITE SOIL, AND 30% BREW-GRO BIOCOMP CLASS 1 (OR CITY APPROVED EQUAL)

A REPRESENTATIVE SAMPLE OF THE BOTANICAL NAME TAGS, FURNISHED BY THE NURSERY STOCK PROVIDER SHALL REMAIN ATTACHED TO THE PLANTS UNTIL FINAL INSPECTION.

LANDSCAPE CONTRACTOR SHALL NOTIFY LANDSCAPE ARCHITECT IF STORM DRAINAGE FROM ADJACENT LANDSCAPE AREAS OR BUILDING DOWNSPOUTS WILL ADVERSELY AFFECT LANDSCAPED AREAS PER THE PLAN.

DECORATIVE BOULDERS SHALL BE BURIED 1/3 BELOW GRADE AND SHALL NOT OBSTRUCT VEHICULAR SIGHTLINES IF APPLICABLE.

PRIOR TO INSTALLING PLANTS OR GROUND COVER BROADCAST PREEN WEED PRE-EMERGENT IN ALL PLANTING AREAS PER MANUFACTURE RECOMMENDATIONS. [WWW.PREEN.COM](http://WWW.PREEN.COM)

DOCUMENT NOTE

IRRESPECTIVE OF ANY OTHER TERM IN THIS DOCUMENT, LANDSCAPE ARCHITECT SHALL NOT CONTROL OR BE RESPONSIBLE FOR CONSTRUCTION MEANS, METHODS, TECHNIQUES, SCHEDULES, SEQUENCES OR PROCEDURES, OR FOR CONSTRUCTION SAFETY OR ANY OTHER RELATED PROGRAMS, OR FOR ANOTHER PARTIES' ERRORS OR OMISSIONS OR FOR ANOTHER PARTIES FAILURE TO COMPLETE THEIR WORK OR SERVICES IN ACCORDANCE WITH LANDSCAPE ARCHITECT'S DOCUMENTS.

HIGHER GROUND DESIGNS, INC.

LANDSCAPE ARCHITECTURE, PLANNING & IRRIGATION DESIGN

5350 NORTH ACADEMY BLVD., STE. 207  
COLORADO SPRINGS, CO 80916  
Phone 719-477-1144  
Fax 719-586-1122



LOT 1 - FALCON MARKETPLACE

WOODMEN & MERIDIAN  
EL PASO COUNTY, COLORADO

THESE DRAWINGS ARE THE PROPERTY OF  
HIGHER GROUND DESIGNS, INC. AND SHALL  
NOT BE REPRODUCED OR COPIED IN ANY  
MANNER WITHOUT WRITTEN AUTHORIZATION BY  
HIGHER GROUND DESIGNS, INC.

OWNER: \_\_\_\_\_  
DESIGNED BY: T. BOOKER  
1460 GARDEN OF THE GODS ROAD  
COLORADO SPRINGS, CO 80907  
719-635-4483 tbooker@goodwillcolorado.org

NOT FOR CONSTRUCTION

JOB NUMBER  
1116-23

REVISIONS	
10-25-23	PER COMMENTS
12-21-23	PER COMMENTS


ORIGINAL DATE  
9-15-23

DRAWN BY

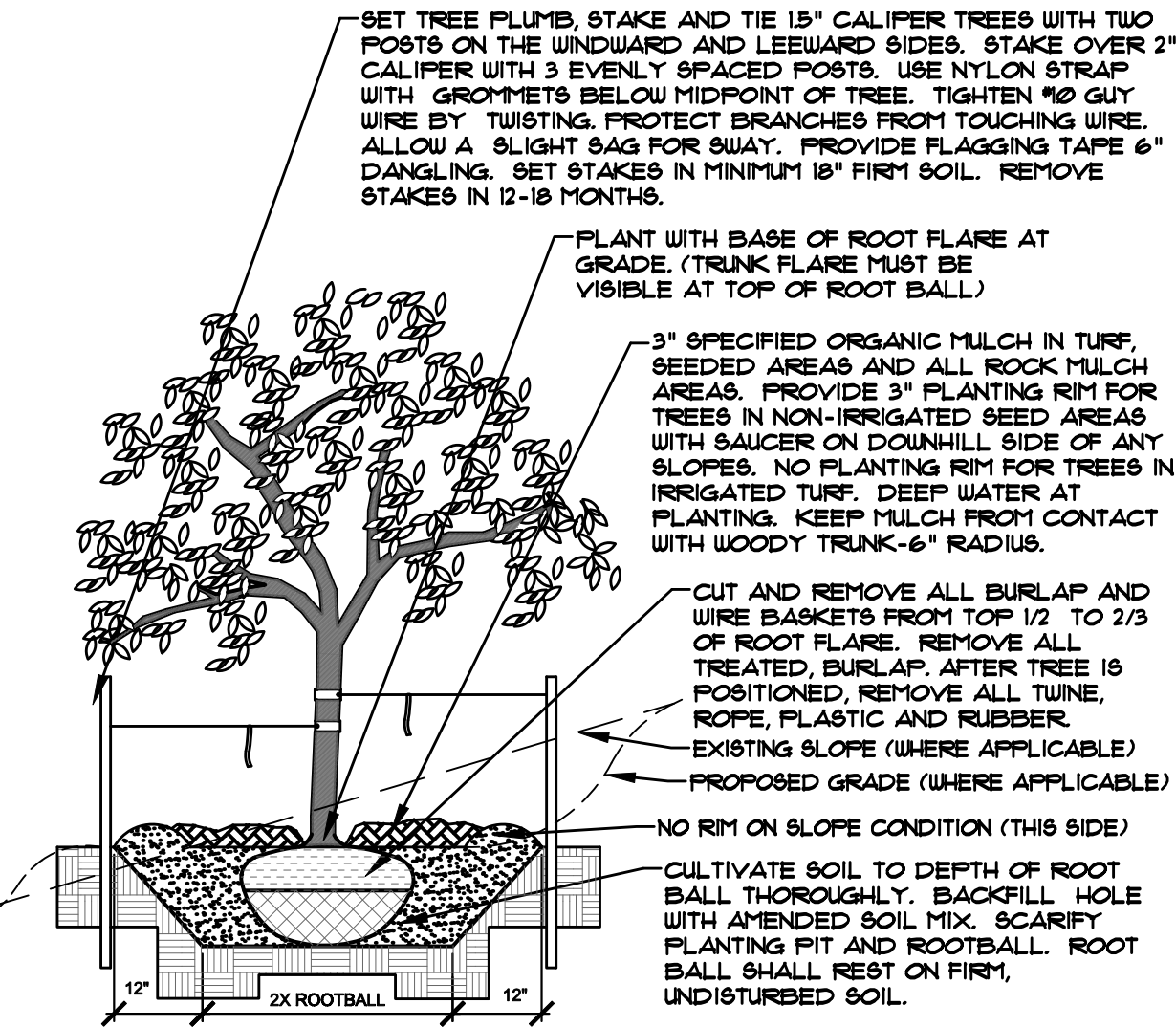
DESCRIPTION  
DETAILS AND NOTES

SHEET NO.

L1.4

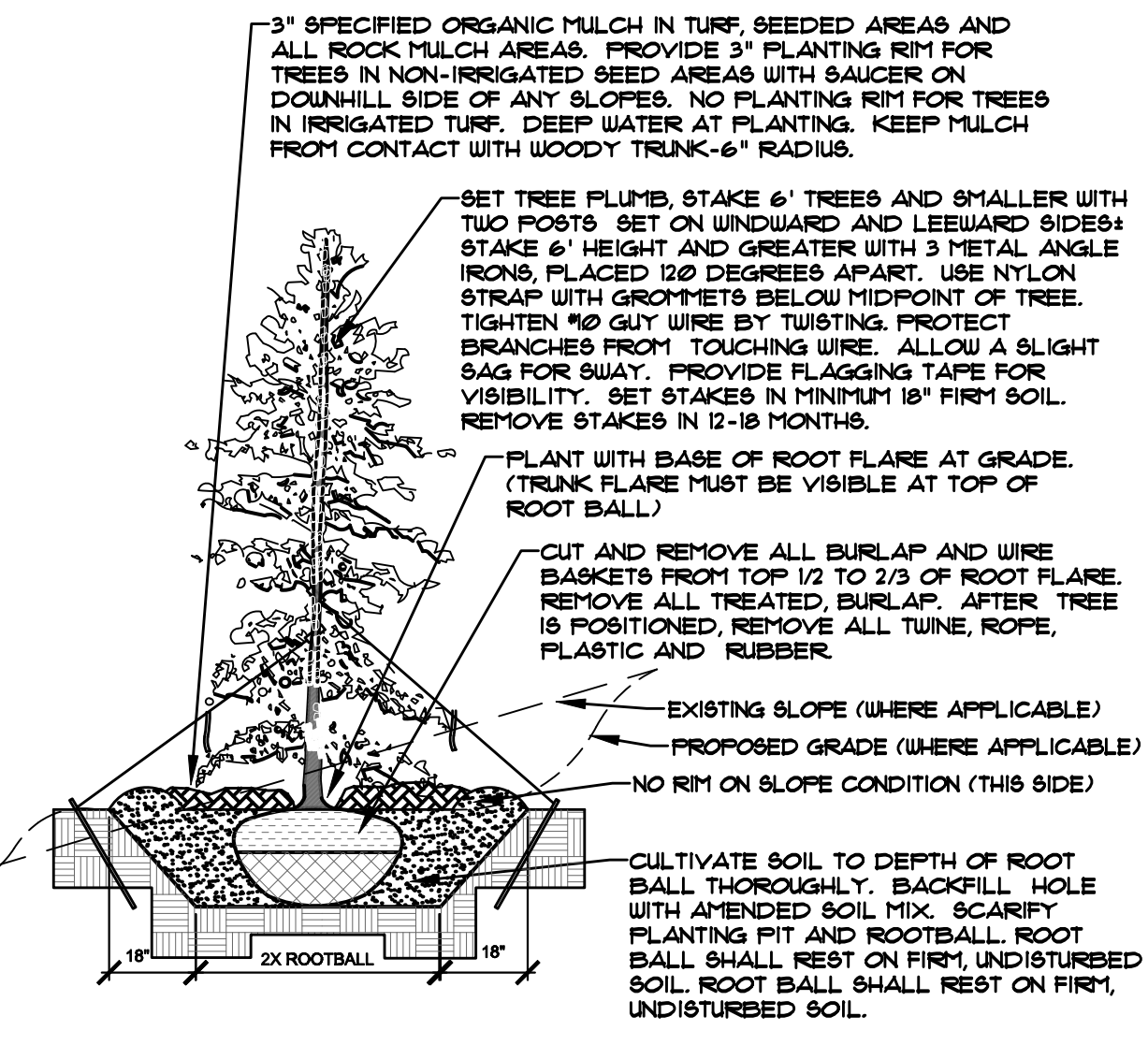


- NOTES:
- MARK NORTH SIDE OF TREE AT NURSERY AND ALIGN TREE TO NORTH WHEN PLANTING.
  - DO NOT REMOVE OR CUT LEADER.
  - PRUNE ONLY DEAD, BROKEN, CROSSING, OR WEAK BRANCHES (OR NARROW CROTCHES) IMMEDIATELY PRIOR TO PLANTING. DO NOT REMOVE TERMINAL BUDS THAT EXTEND TO TREE CROWN.
  - NO STRUCTURAL PRUNING OF TREE UNTIL AFTER ESTABLISHMENT PERIOD (2 GROWING SEASONS).
  - REMOVE ANY DOUBLE LEADER, UNLESS OTHERWISE DIRECTED BY OWNER'S REPRESENTATIVE.
  - KEEP PLANTS MOIST AND SHADED UNTIL PLANTING. AVOID FALL PLANTING IF POSSIBLE.
  - AMENDED BACKFILL SHALL BE 10% SOIL FROM PLANTING PIT AND 30% ORGANIC MATERIAL.
  - WRAP TRUNK ON EXPOSED BIRCH OR SPRUCE WITH THIN BARK. USE ELECTRICAL TAPE, NOT TWINE. UNWRAP OCTOBER 15 AND REMOVE BY MARCH 31.
  - DO NOT FERTILIZE TREE DURING THE FIRST GROWING SEASON.
  - COORDINATE WITH CITY FORESTRY FOR CURRENT INSECT & DISEASE RECOMMENDATIONS PRIOR TO PLANTING.



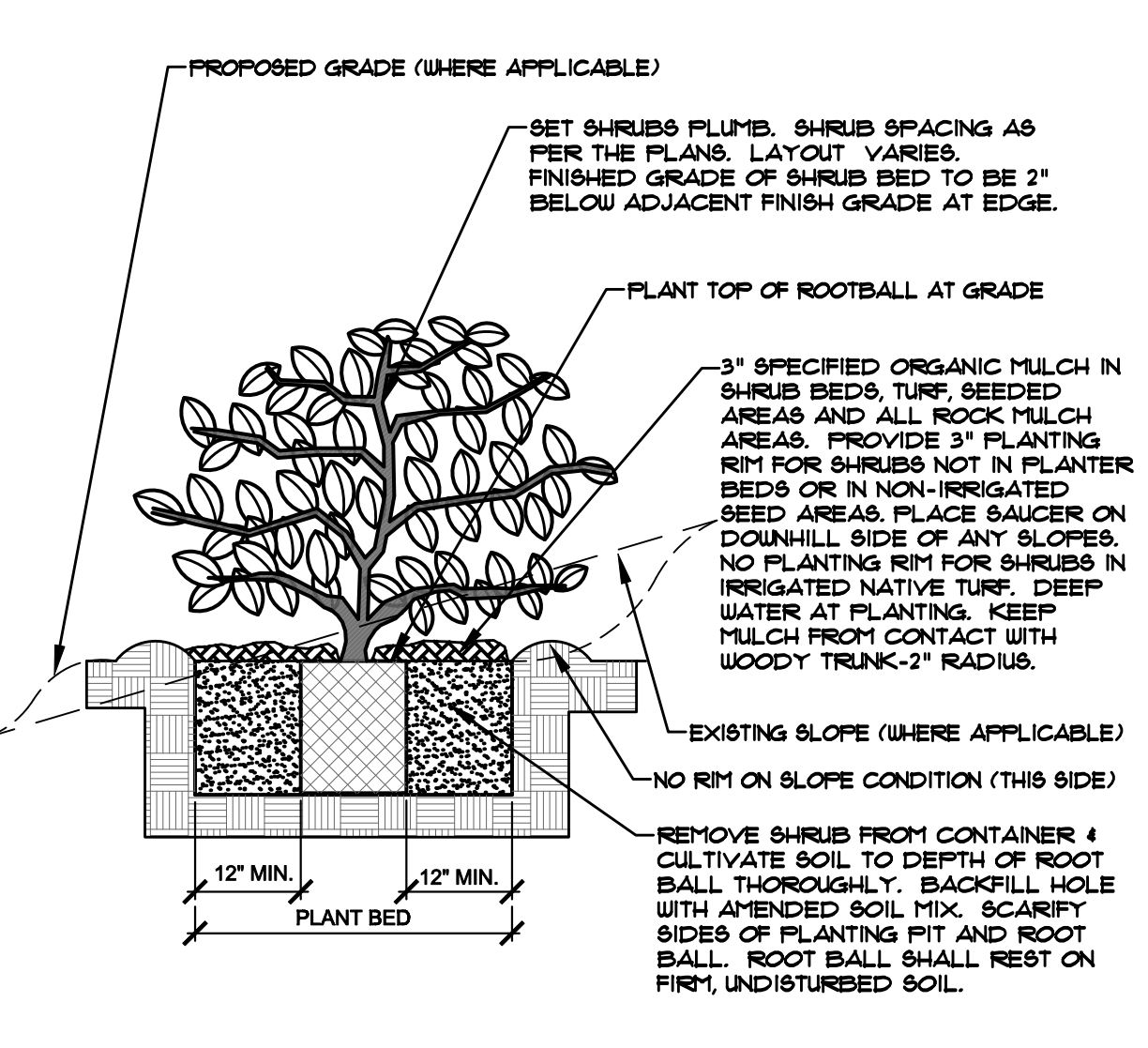
**A** DECIDUOUS TREE PLANTING DETAIL  
NOT TO SCALE

- NOTES:
- MARK NORTH SIDE OF TREE AT NURSERY AND ALIGN TREE TO NORTH WHEN PLANTING.
  - DO NOT REMOVE OR CUT LEADER.
  - PRUNE ONLY DEAD OR BROKEN BRANCHES IMMEDIATELY PRIOR TO PLANTING.
  - REMOVE ANY DOUBLE LEADER, UNLESS OTHERWISE DIRECTED BY OWNER'S REPRESENTATIVE.
  - KEEP PLANTS MOIST AND SHADED UNTIL PLANTING.
  - AVOID FALL PLANTING IF POSSIBLE.
  - AMENDED BACKFILL SHALL BE 10% SOIL FROM PLANTING PIT AND 30% ORGANIC MATERIAL.
  - PINE AND SPRUCE TREES TO BE SPRAYED FOR IPS BARK BEETLE PRIOR TO PLANTING (SEE CONIFEROUS TREE NOTE ON PLANTING NOTES SHEET)



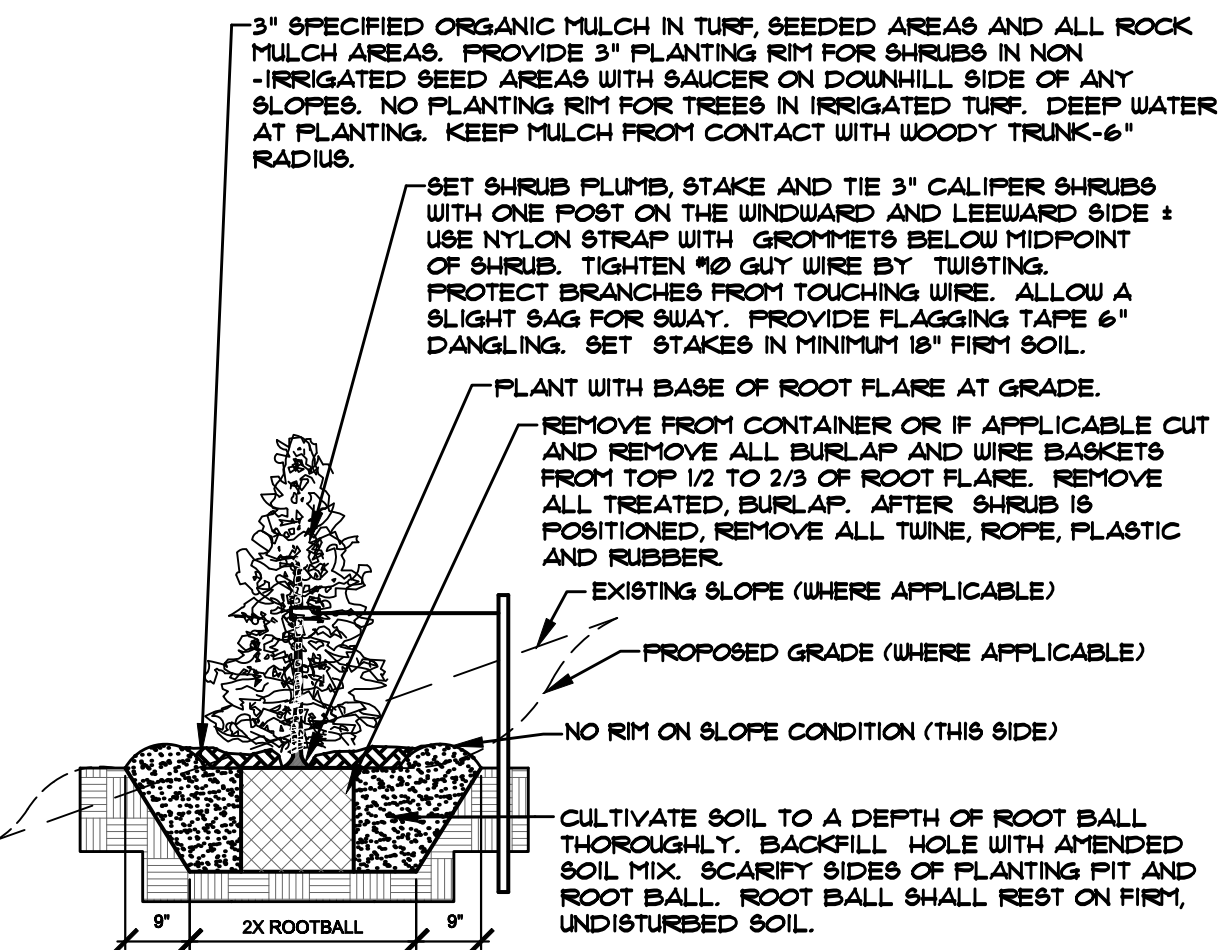
**B** EVERGREEN TREE PLANTING DETAIL  
NOT TO SCALE

- NOTES:
- PRUNE ONLY DEAD OR BROKEN BRANCHES IMMEDIATELY PRIOR TO PLANTING.
  - KEEP PLANTS MOIST AND SHADED UNTIL PLANTING.
  - DO NOT FERTILIZE FOR AT LEAST ONE GROWING SEASON.
  - AMENDED BACKFILL SHALL BE 10% SOIL FROM PLANTING PIT AND 30% ORGANIC MATERIAL.
  - FOR ROOT BED AT BOTTOM OF BALL, SPLIT ROOT BALL VERTICALLY FROM BOTTOM HALFWAY TO TOP. SPREAD THE TWO HALVES OVER A MOUND OF SOIL IN PLANTING PIT.
  - FOR POT BOUND PLANTS ONLY: MAKE 4-5 VERTICAL CUTS IN ROOT BALL 1" DEEP. PLANT IMMEDIATELY.

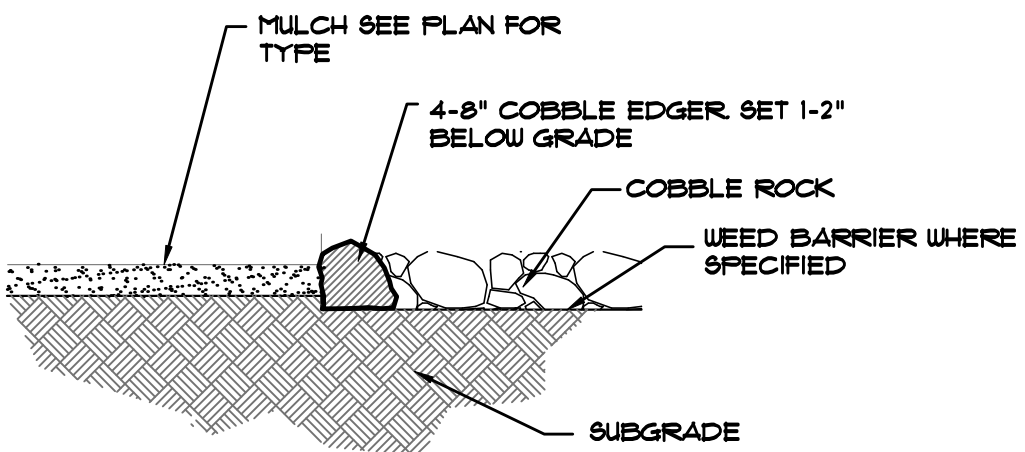


**C** SHRUB PLANTING DETAIL  
NOT TO SCALE

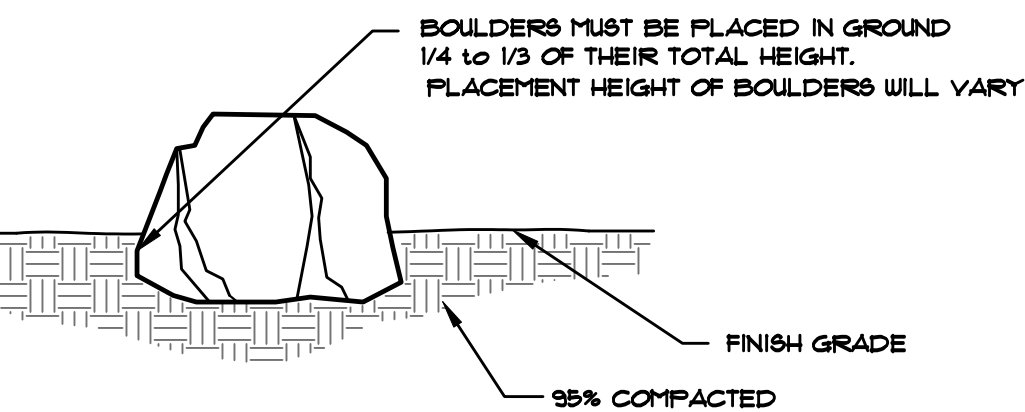
- NOTES:
- DO NOT REMOVE OR CUT LEADER.
  - PRUNE ONLY DEAD OR BROKEN BRANCHES IMMEDIATELY PRIOR TO PLANTING.
  - REMOVE ANY DOUBLE LEADER, UNLESS OTHERWISE DIRECTED BY OWNER'S REPRESENTATIVE.
  - KEEP PLANTS MOIST AND SHADED UNTIL PLANTING.
  - AVOID FALL PLANTING IF POSSIBLE.
  - AMENDED BACKFILL SHALL BE 10% SOIL FROM PLANTING PIT AND 30% ORGANIC MATERIAL.
  - FOR ROOT BED (CONTAINER PLANTS ONLY) AT BOTTOM OF BALL SPLIT ROOT BALL VERTICALLY FROM BOTTOM HALFWAY TO TOP. SPREAD THE TWO HALVES OVER A MOUND OF SOIL IN PLANTING PIT.
  - FOR POT BOUND PLANTS ONLY: MAKE 4-5 VERTICAL CUTS IN ROOT BALL 1" DEEP. PLANT IMMEDIATELY. (CONTAINER PLANTS ONLY)



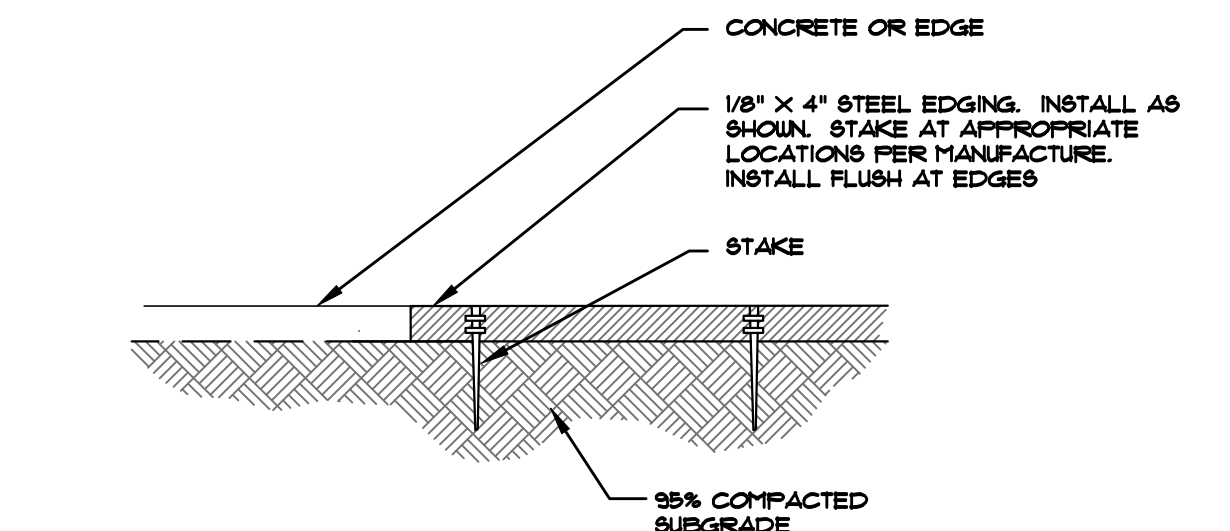
**D** UPRIGHT EVERGREEN SHRUB PLANTING DETAIL  
NOT TO SCALE



**E** MULCH/ROCK SECTION  
NOT TO SCALE



**F** ACCENT BOULDER SECTION  
NOT TO SCALE



**G** STEEL EDGING  
NOT TO SCALE

Chapter 5  
Native Vegetation Requirements and Guidelines

Table 5-1. El Paso County Conservation District All-Purpose Mix for Upland, Transition and Permanent Control Measure Areas

Common Name	Scientific Name	Growth Season / Form	% of Mix	Pounds PLS USE THIS MIX		
				• Irrigated broadcast • Irrigated hydroseeded	• Non-irrigated broadcast • Non-irrigated hydroseeded • Irrigated drilled	• Non-irrigated drilled
				80 seeds/sq ft	40 seeds/sq ft	20 seeds/sq ft
Bluestem, big	<i>Andropogon gerardii</i>	Warm, sod	20	4.4	2.2	1.1
Grass, blue	<i>Bouteloua gracilis</i>	Warm, bunch	10	0.5	0.25	0.13
Green needlegrass <sup>2</sup>	<i>Nassella viridula</i>	Cool, bunch	10	2	1	0.5
Wheatgrass, western <sup>2</sup>	<i>Pascopyrum smithii</i>	Cool, sod	20	6.4	3.2	1.6
Grass, sideoats	<i>Bouteloua curtipendula</i>	Warm, bunch	10	2	1	0.5
Switchgrass <sup>2</sup>	<i>Panicum virgatum</i>	Warm, bunch/sod	10	0.8	0.4	0.2
Prairie sandreed	<i>Calamovilfa longifolia</i>	Warm, sod	10	1.2	0.6	0.3
Yellow indiagrass <sup>2</sup>	<i>Sorghastrum nutans</i>	Warm, sod	10	2	1	0.5
Seed rate (lbs PLS/acre)				19.3	9.7	4.8

<sup>1</sup>For portions of facilities located near or on the bottom or where wet soil conditions occur. Planting of potted nursery stock wetland plants 2-foot on-center is recommended for sites with wetland hydrology.

<sup>2</sup>Species that will do well in the bottom of pond areas.

UTILITIES NOTE

VERIFY LOCATION AND DEPTH OF ALL UNDERGROUND UTILITIES PRIOR TO START OF WORK. CALL 811 FOR UTILITY LOCATES. TREE TRUNK PLACEMENT SHALL BE 6" MINIMUM DISTANCE FROM ANY GAS OR ELECTRIC AND 10" FROM GAS MAINS RATED AT 150PSI. FOR SANITARY SEWER AND WATER MAINLINES TREES SHALL NOT BE LOCATED WITHIN EASEMENTS AND WITHIN 15' OF ANY MAINLINE. ANY CONFLICT BETWEEN TREE LOCATIONS AND UTILITIES SHOWN ON PLANS SHALL BE RESOLVED WITH GENERAL CONTRACTOR PRIOR TO PLANTING. ALL ELECTRICAL VAULTS AND TRANSFORMERS SHALL BE KEPT CLEAR FROM PLANT MATERIAL PER COLORADO SPRINGS UTILITIES GUIDELINES. LANDSCAPING AROUND ELECTRICAL EQUIPMENT. SEE COLORADO SPRINGS UTILITIES CONSTRUCTION STANDARD DRAWINGS 18-302 FOR SPECIFIC CLEARANCE REQUIREMENTS. ALL SHRUBS TO BE LOCATED 3' CLEAR OF ALL FIRE HYDRANTS AT MATURE SIZE.

DOCUMENT NOTE

IRRESPECTIVE OF ANY OTHER TERM IN THIS DOCUMENT, LANDSCAPE ARCHITECT SHALL NOT CONTROL OR BE RESPONSIBLE FOR CONSTRUCTION MEANS, METHODS, TECHNIQUES, SCHEDULES, SEQUENCES OR PROCEDURES, OR FOR CONSTRUCTION SAFETY OR ANY OTHER RELATED PROGRAMS, OR FOR ANOTHER PARTIES' ERRORS OR OMISSIONS OR FOR ANOTHER PARTIES' FAILURE TO COMPLETE THEIR WORK OR SERVICES IN ACCORDANCE WITH LANDSCAPE ARCHITECT'S DOCUMENTS.

HIGHER GROUND DESIGNS, INC.  
LANDSCAPE ARCHITECTURE, PLANNING & IRRIGATION DESIGN

5350 NORTH ACADEMY BLVD., STE. 207  
COLORADO SPRINGS, CO 80916  
Phone 719-477-1646  
Fax 719-586-1122



LOT 1 - FALCON MARKETPLACE  
WOODMEN & MERIDIAN  
EL PASO COUNTY, COLORADO

THESE DRAWINGS ARE THE PROPERTY OF  
HIGHER GROUND DESIGNS, INC. AND SHALL  
NOT BE REPRODUCED OR COPIED  
WITHOUT WRITTEN AUTHORIZATION BY  
HIGHER GROUND DESIGNS, INC.

OWNER: BOOKER  
1460 GARDEN OF THE GODS ROAD  
COLORADO SPRINGS, CO 80907  
719-636-4483 bbooker@goodwillcolorado.org

NOT FOR CONSTRUCTION

JOB NUMBER  
**1116-23**

REVISIONS  
10-25-23 PER COMMENTS  
12-21-23 PER COMMENTS

ORIGINAL DATE  
**9-15-23**

DRAWN BY  
DESCRIPTION  
**DETAILS AND NOTES**

SHEET NO.  
**L1.5**