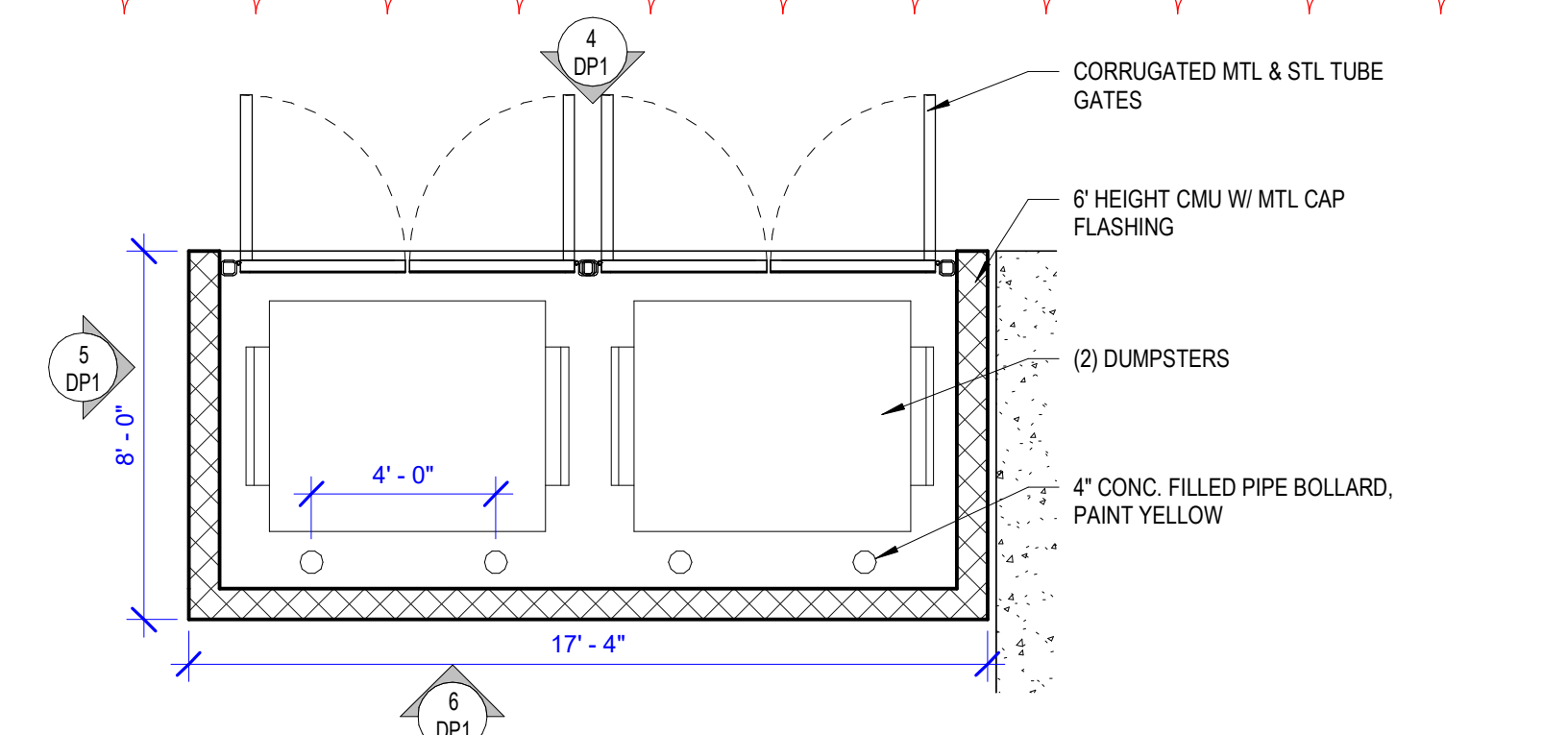
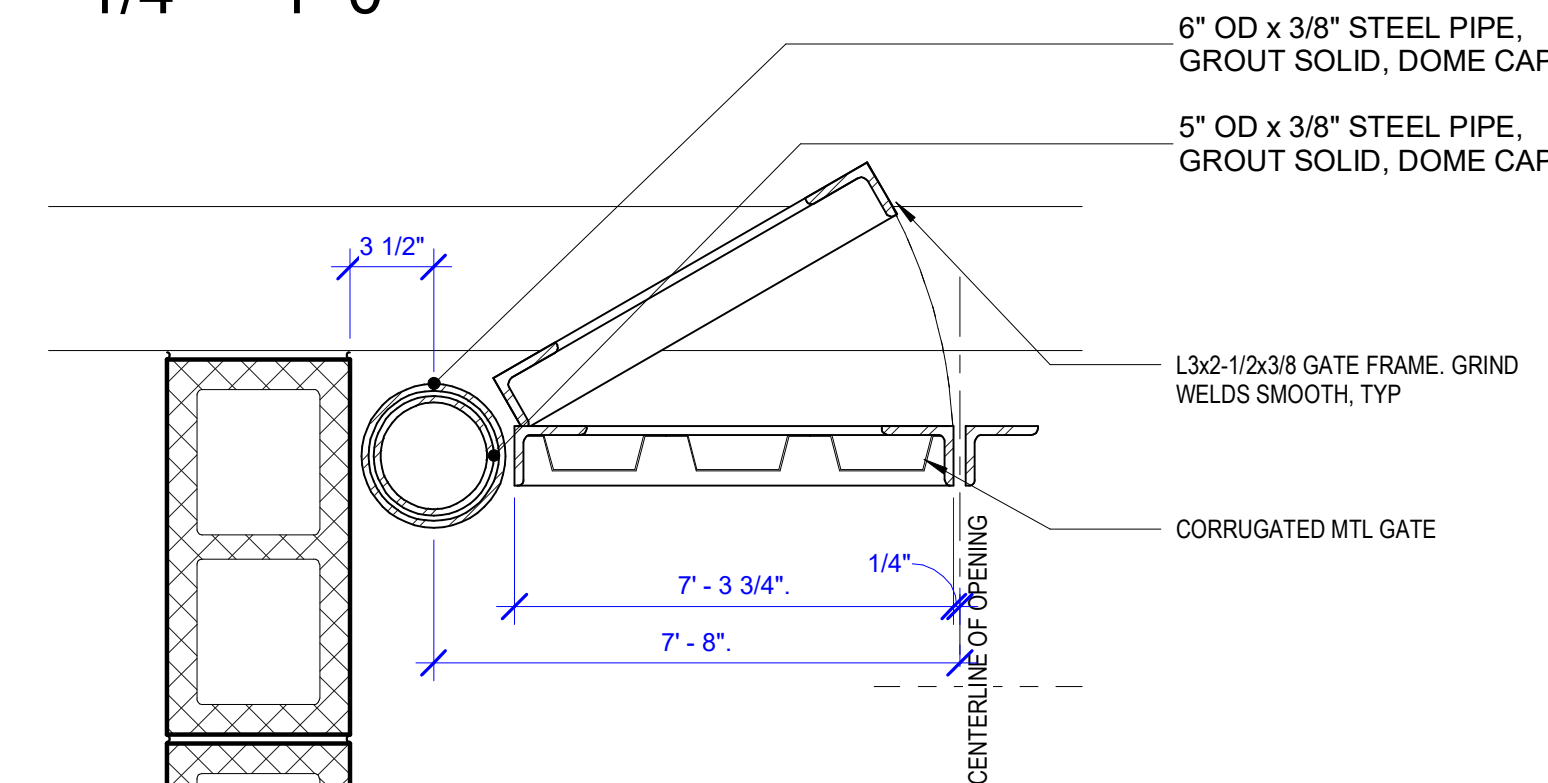


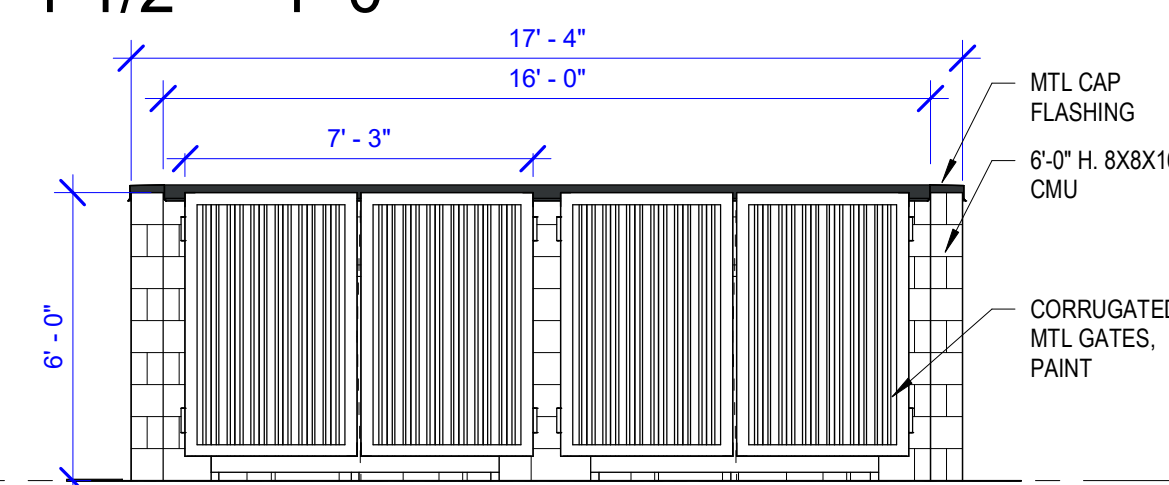
1 OVERALL FLOOR PLAN  
1/16" = 1'-0"



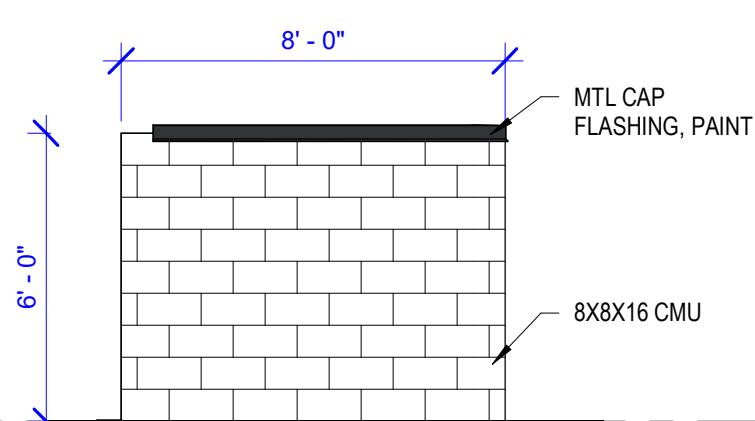
2 ENLARGED PLAN - TRASH ENCLOSURE - DP  
1/4" = 1'-0"



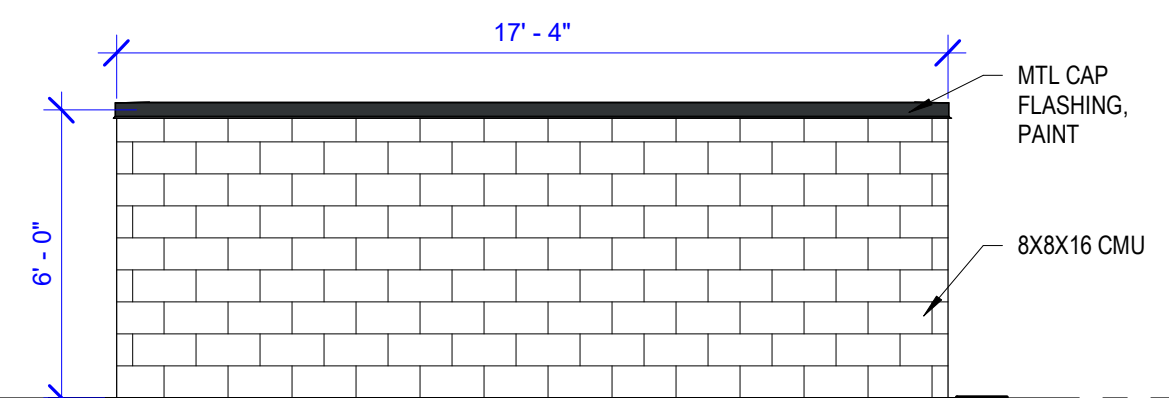
3 DP - ENLARGED PLAN - TRASH ENCLOSURE GATE  
1 1/2" = 1'-0"



4 DP - DETAIL ELEVATION - TRASH GATES  
1/4" = 1'-0"



5 DP - DETAIL ELEVATION - TRASH SIDE  
1/4" = 1'-0"



6 DP - DETAIL ELEVATION - TRASH BACK  
1/4" = 1'-0"

SEAL

DATE  
11.15.2023

ISSUE  
DEVELOPMENT  
PLAN

REVISIONS:

No.	Issuance	Date
1		11.15.2023

OWNERSHIP OF INSTRUMENTS OF  
SERVICE

All Drawings, Reports, Plans, Specifications, Computer  
Files including CAD/BIM files, field information, notes,  
sketches, and other design materials prepared by the  
Architect and his/her consultants as instruments of service  
shall remain the property of the Architect. The Architect  
shall retain all common law, statutory and other reserved  
rights, including the Copyright therein.

PROJECT NUMBER  
23-110

GOODWILL RETAIL  
NEW CONSTRUCTION  
7520 FALCON MARKET PL.  
FALCON, CO

303-11c  
ARCHITECTURE | DESIGN | SUSTAINABLE LIVING  
815 S. 25TH ST. #203  
COLORADO SPRINGS, CO 80904  
719.505.6835  
WWW.308LLC.COM

SHEET

DP1

DP - FLOOR PLAN



SEAL

DATE  
11.15.2023

ISSUE  
DEVELOPMENT  
PLAN

REVISIONS:

[illegible]

### OWNERSHIP OF INSTRUMENTS OF SERVICE

all Drawings, Reports, Plans, Specifications, Computer files including CAD/BIM files), field information, notes, sketches, and other design materials prepared by the architect and his/her consultants as instruments of service shall remain the property of the Architect. The Architect shall retain all common law, statutory and other reserved rights, including the Copyright thereto.

PROJECT NUMBER  
23-110

GOODWILL RETAIL

308llc  
ARCHITECTURE | DESIGN | SUSTAINABLE LIVING

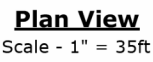
815 S. 25TH ST. #203  
COLOADO SPRINGS, CO 80904  
719.505.6635  
WWW.308LLC.COM

SHEET

# DP2

DP - EXTERIOR  
ELEVATIONS





cc: 2149cd

DADI

Any v



**GOODWILL - FALCON  
SITE PHOTOMETRIC STUDY**

**1 of 1**

DP - PHOTOMETRIC