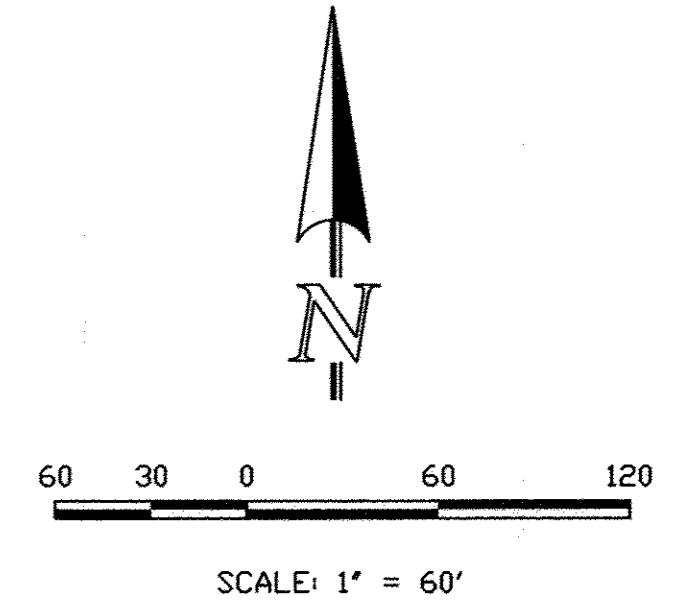


FINAL PLAT EXHIBIT ACADEMY GATEWAY SUBDIVISION FILING NO. 1

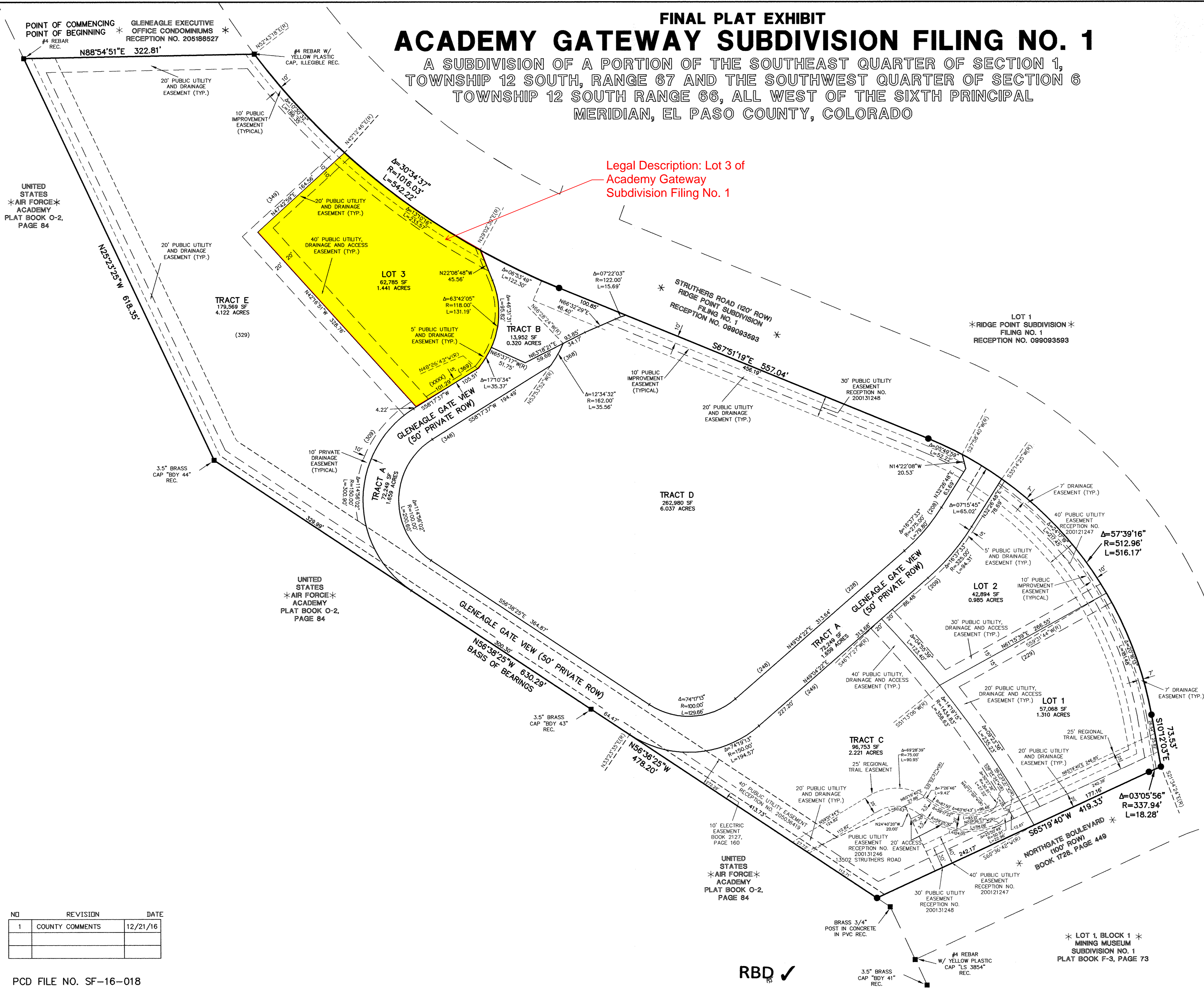
13997

A SUBDIVISION OF A PORTION OF THE SOUTHEAST QUARTER OF SECTION 1,
TOWNSHIP 12 SOUTH, RANGE 67 AND THE SOUTHWEST QUARTER OF SECTION 6
TOWNSHIP 12 SOUTH RANGE 66, ALL WEST OF THE SIXTH PRINCIPAL
MERIDIAN, EL PASO COUNTY, COLORADO

Legal Description: Lot 3 of
Academy Gateway
Subdivision Filing No. 1



- LEGEND**
- RECOVERED MONUMENT AS NOTED
 - 1-1/2" ALUMINUM SURVEYORS CAP STAMPED
"CCES LLC PLS 30118" SET
 - * NOT PART OF THIS PLAT
 - (XXXX) STREET ADDRESS



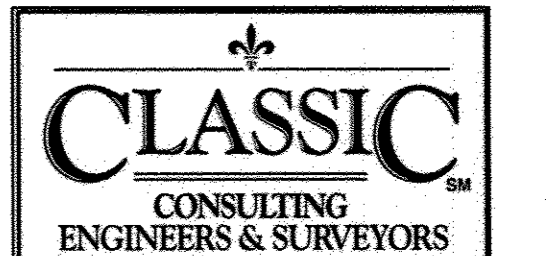
NO	REVISION	DATE
1	COUNTY COMMENTS	12/21/16

PCD FILE NO. SF-16-018

RBD ✓

[Signature]
 COLORADO LICENSE
 1-05-17
 CLASSIC CONSULTING ENGINEERS & SURVEYORS

ACADEMY GATEWAY SUBDIVISION
 FILING NO. 1
 JOB NO. 2507.00
 OCTOBER 6, 2016
 SHEET 2 OF 2



619 N. Cascade Avenue, Suite 200
 Colorado Springs, Colorado 80903 (719)785-0790
 (719)785-0799 (Fax)

N:\250700\DRAWINGS\SURVEY\PLAT\250700P2.dwg, 7/5/2017 9:42:05 AM, 1:1