



Preliminary Acceptance Punchlist
El Paso County – Department of Public Works - Stormwater Section

Project Name:	Kum & Go at Main St. & Security
EDARP Filing Number(s):	PPR2225, CON2324
ESQCP Number:	ESQ2321
Attendees:	DPW SW: Natasha Grimaldo, Glenn Reese, and Erica Rylander DPW Development Services: N/A Developer: Steve Torgerson
Date of Walk-Thru:	02/13/2024
Walk-Thru Number:	1 st

When all items below are completed, please let your inspector know as soon as possible so they can come out to the project to confirm.

Findings to be addressed prior to scheduling a follow-up walk-thru:

Defect Warranty Items for Final Acceptance (During/After Defect Warranty Period)

- Ensure seeded areas achieve adequate vegetative coverage prior to Final Acceptance.

Items for Preliminary Acceptance

Site Wide:

- Submit a spec sheet and PO/receipt for the seed mix purchased and used.

Stormwater Inlet Structures:

- Remove temporary control measures from all inlets (e.g., rock socks and geotextile fabric). Reference photos 1 and 2.

Underground ADS System:

- Confirm that the two Inspection Port covers are removable for future use. Reference photos 3 and 4.

As-Built Drawings and Pond Certification

- Per ECM Chapter 5.10.6 As-Built drawings shall be submitted at the initiation of the Preliminary Acceptance process. Approved As-Built drawings are not required to enter the 2-yr defect warranty period. As-Built drawings must be approved by the ECM Administrator prior to Final Acceptance.

Please have your engineer submit the following items (if they haven't already):

- Engineering Record Drawings (As-Built drawings) consistent with Section 5.10.6 of the ECM.
 - Even if everything was built exactly per plan, we need an electronic PDF of the original drawings to be signed, dated, and stamped with "As-Built" on each sheet.
 - Differences from design to as-built conditions to be shown in red text with red clouds/bubbles.
- Volume Certification Letter(s) for the pond(s), see ECM Chap 5.10.6.B for details on what type of statement should be included in the letter.
 - Letter to be stamped by Engineer.

- State in the Certification Letter that the site and adjacent properties (as affected by work performed under the County permit) are stable with respect to settlement and subsidence, sloughing of cut and fill slopes, revegetation or other ground cover, and that the improvements (public improvements, site grading) meet or exceed the minimum design requirements.
- For sites including detention and/or water quality facilities, the Certification Letter shall include a statement that the facilities provide the required storage volume and will meet the required release rates.
- Re-submit UD-Detention spreadsheet per changes from the original design to the as-built condition. Can be included with Cert Letter.
 - If significant changes, we would also need to submit the updated UD-Detention calcs to the SDI Facility Notification website.

Photos:



Photo 1: Remove temporary control measures from all inlets (e.g., rock socks and geotextile fabric).

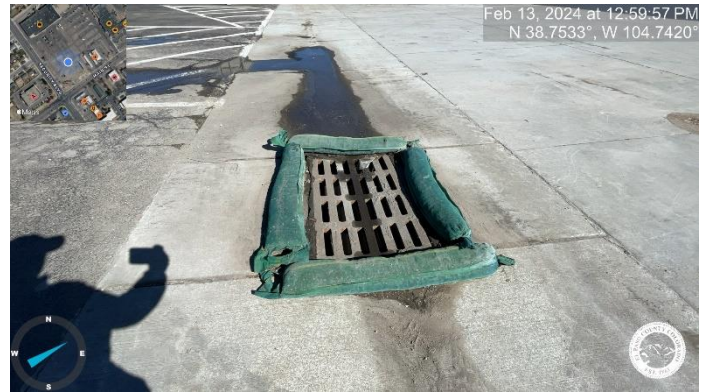


Photo 2: Remove temporary control measures from all inlets (e.g., rock socks and geotextile fabric).



Photo 3: Confirm that Inspection Port covers are removable for future use.



Photo 4: Confirm that Inspection Port covers are removable for future use.