

DRAWING SCHEDULE		SITE DEVELOPMENT PLAN MARCH 26, 2024
SHEET	DESCRIPTION	
E01	LEGEND AND GENERAL NOTES	●
E02	PHOTOMETRIC STUDY	●
E03	LIGHTING CUT SHEETS	●
TOTAL SHEETS IN ISSUE:		3

LIGHTING FIXTURE SCHEDULE

LIGHTING FIXTURE CATALOG NUMBERS ARE SERIES TYPE ONLY. PROVIDE TRIMS, BALLASTS, MOUNTING EQUIPMENT, FITTINGS AND LAMPS AS REQUIRED BY THE SPECIFICATIONS AND PROJECT CONDITIONS FOR A COMPLETE INSTALLATION. THIS IS NOT A STANDALONE SCHEDULE AND FIXTURES MUST INCORPORATE ALL WORK INDICATED OR IMPLIED THROUGHOUT THE DRAWINGS AND SPECIFICATIONS.

- SUBSTITUTION DEFINITIONS**
- OR EQUAL = EQUAL OR SUPERIOR TO SPECIFIED IN ALL RESPECTS WILL BE ALLOWED. ENGINEER'S PRE-BID APPROVAL IS NOT REQUIRED. PROPOSED EQUAL FIXTURES ARE SUBJECT TO REVIEW DURING THE STANDARD SUBMITTAL PROCESS.
 - NO EQUAL = PROVIDE SPECIFIED FIXTURE. SUBSTITUTIONS ARE NOT ALLOWED.
 - SUBJECT TO REVIEW = EQUAL OR SUPERIOR TO SPECIFIED IN ALL RESPECTS MAY BE ALLOWED ONLY WITH ENGINEER'S APPROVAL. ALL SUBSTITUTIONS MUST BE SUBMITTED AS REQUIRED BY SPECIFICATIONS AND ACCOMPANIED WITH POINT BY POINT LIGHTING CALCULATIONS. DETERMINATION OF EQUAL IS ENGINEER'S SOLE DISCRETION.

TYPE	SYMBOL	DESCRIPTION AND MANUFACTURER
250W		EXISTING 2-HEAD POLE MOUNTED SHOE BOX METAL HALIDE FIXTURE. POLE: 30' AFG LAMP: 250W METAL HALIDE VOLTAGE: UNV MANUFACTURER: *EXISTING* SUBSTITUTIONS: ○ OR EQUAL ○ SUBJECT TO REVIEW ● NO EQUAL
250W		EXISTING 2-HEAD POLE MOUNTED SHOE BOX METAL HALIDE FIXTURE. POLE: 16' AFG LAMP: 250W METAL HALIDE VOLTAGE: UNV MANUFACTURER: *EXISTING* SUBSTITUTIONS: ○ OR EQUAL ○ SUBJECT TO REVIEW ● NO EQUAL
300W		IES FILE EQUIVALENT: GFLD-SA5E-750-U-WR-VSR OUTDOOR LED FLOOD LIGHT FIXTURE, 0-10V DIMMABLE, 42000LM, IP65 LAMP: LED, 5000K, 42000 LM VOLTAGE: UNV MANUFACTURER: UNUNONO SUBSTITUTIONS: ● OR EQUAL ○ SUBJECT TO REVIEW ○ NO EQUAL

ELECTRICAL LEGEND

- PANELBOARD: SURFACE MOUNTED
- PANELBOARD: FLUSH MOUNTED
- SWITCHBOARD OR DISTRIBUTION PANEL
- TRANSFORMER
- PULLBOX / VAULT
- MOTOR STARTER
- COMBINATION MOTOR STARTER
- COMBINATION MOTOR STARTER PROVIDED BY OTHERS (COORDINATE WITH STAND RATINGS WITH EQUIP SUPPLIER)
- DISCONNECT SWITCH - FUSIBLE (FUSED PER EQUIP. NAMEPLATE)
- DISCONNECT SWITCH - NON-FUSIBLE
- DISCONNECT SWITCH PROVIDED BY OTHERS (COORDINATE WITH STAND RATINGS WITH EQUIP SUPPLIER)
- VARIABLE FREQUENCY DRIVE
- VARIABLE FREQUENCY DRIVE PROVIDED BY OTHERS (COORDINATE WITH STAND RATINGS WITH EQUIP SUPPLIER)
- ENCLOSED CIRCUIT BREAKER
- GROUND ROD
- SHUNT TRIP STATION OR EMERGENCY PUSHBUTTON
- REMOTE METER

- SINGLE POLE SWITCH 48" AFF
- THREE WAY SWITCH 48" AFF
- FOUR WAY SWITCH 48" AFF
- KEY OPERATED SWITCH 48"
- SWITCH WITH LIGHTED HANDLE
- MANUAL MOTOR STARTER
- SWITCH WITH PILOT LIGHT 48" AFF
- TIME WALL SWITCH EQUAL TO HUBBELL DT2000W 48" AFF
- DIMMER OPERATED SWITCH 48" AFF
- OCCUPANCY SENSOR - WALL MOUNTED 48" AFF
- 0-10V DIMMING OCCUPANCY SENSOR - WALL MOUNTED 48" AFF - EQUAL TO SENSOR SWITCH WSX-D
- OCCUPANCY SENSOR - CEILING MOUNTED. PROVIDE WITH POWER PACK PER MFG REQUIREMENTS.
- OCCUPANCY SENSOR - CORNER MOUNTED. PROVIDE WITH POWER PACK PER MFG REQUIREMENTS.
- CONTROL STATION
- CONTACTOR OR RELAY
- PHOTOELECTRIC CELL (ON ROOF FACING NORTH UNO)
- TIMECLOCK

- DATA / VOICE OUTLET: 18" AFF - 1 VOICE, 1 DATA JACK, 2 BLANKS
- DATA / VOICE OUTLET: FLOOR MOUNTED
- MULTI-OUTLET ASSEMBLY: SPACING PER DWGS
- TELEPHONE OUTLET: 18" AFF
- DATA OUTLET: 18" AFF
- DEVICE MOUNTED AT NON-STANDARD HEIGHT. IF NO HEIGHT SHOWN VERIFY HEIGHT WITH ARCHITECT
- SPEAKER
- TELEVISION OUTLET: 18" AFF (UNO)
- TELEPHONE TERMINAL BOARD (TTB)
- VOLUME CONTROL
- GROUNDING BAR

- CONDUIT/RACEWAY IN WALL OR ABOVE CEILING
- CONDUIT/RACEWAY BELOW GRADE OR BELOW FLOOR
- BREAK OR RUN CONTINUES
- OVERHEAD SERVICE
- PRIMARY
- SECONDARY
- COMMUNICATIONS OR SIGNAL
- TELEPHONE
- TELEVISION
- LOW VOLTAGE AND/OR CONTROL WIRING
- EMERGENCY CIRCUIT
- CONDUIT/RACEWAY STUB OUT: MARK AND CAP (SITE)
- CONDUIT/RACEWAY SLEEVE

- E = EQUIPMENT
- H = ELECTRIC HEAT
- K = KITCHEN EQUIP
- L = LIGHTING
- M = MOTOR
- M1 = LARGEST MOTOR
- R = RECEPTACLES

- SINGLE RECEPTACLE: 20A, 125V, NEMA 5-20, +18" AFF
- DUPLEX RECEPTACLE: 20A, 125V, NEMA 5-20, +18" AFF
- DUPLEX RECEPTACLE: HALF SWITCHED, +18" AFF
- DUPLEX RECEPTACLE GFI TYPE - 20A, 125V, NEMA 5-20 GFI +18" AFF
- QUAD RECEPTACLE: 20A, 125V, NEMA 5-20, +18" AFF
- ISOLATED GROUND TYPE RECEPTACLE (ORANGE TRIANGLE), 20A, 125V, NEMA 5-20G, +18" AFF
- COMBO DUAL USB CHARGER / DUPLEX RECEPTACLE, 5.1A, (1) TYPE A & (1) TYPE C USB (3.1, 3.0, 2.0 AND 1.1 COMPATIBLE), 20A, 125V, NEMA 5-20R, +18AFF
- QUAD USB CHARGER, 5.1A, (2) TYPE A & (2) TYPE C USB (3.1, 3.0, 2.0 AND 1.1 COMPATIBLE), +18AFF
- SPECIAL PURPOSE RECEPTACLE: SEE DWGS FOR NEMA CONFIGURATION
- DUPLEX RECEPTACLE: FLOOR MOUNTED
- QUAD RECEPTACLE: FLOOR MOUNTED
- DUPLEX RECEPTACLE: CEILING MOUNTED
- QUAD RECEPTACLE: CEILING MOUNTED
- BLANK GFCI PROTECTIVE DEVICE IN READILY ACCESSIBLE LOCATION (LABEL PROTECTED DEVICES)
- DUPLEX "CLOCK" RECEPTACLE: 125V, NEMA 5-20R, +60" AFF
- DEVICE MOUNTED AT NON-STANDARD HEIGHT. IF NO HEIGHT SHOWN VERIFY HEIGHT WITH ARCHITECT
- MULTI-OUTLET ASSEMBLY: SPACING PER DWGS

- DATA / VOICE OUTLET: 18" AFF - 1 VOICE, 1 DATA JACK, 2 BLANKS
- DATA / VOICE OUTLET: FLOOR MOUNTED
- MULTI-OUTLET ASSEMBLY: SPACING PER DWGS
- TELEPHONE OUTLET: 18" AFF
- DATA OUTLET: 18" AFF
- DEVICE MOUNTED AT NON-STANDARD HEIGHT. IF NO HEIGHT SHOWN VERIFY HEIGHT WITH ARCHITECT
- SPEAKER
- TELEVISION OUTLET: 18" AFF (UNO)
- TELEPHONE TERMINAL BOARD (TTB)
- VOLUME CONTROL
- GROUNDING BAR

- LENSED TROFFER
- VOLUMETRIC TROFFER
- FLANGED TROFFER
- SURFACE MOUNT TROFFER
- STRIP FIXTURE
- DOWNLIGHT
- WALL PACK
- POLE MOUNT
- EMERGENCY LIGHTING UNIT
- EXIT SIGN FIXTURE - SHADED AREA DENOTES LIGHTED FACE - ARROWS INDICATE DIRECTION
- SHADING INDICATES EGRESS FIXTURE

- THERMOSTAT (PROVIDED BY MECH. CONTRACTOR UNO)
- JUNCTION BOX (SIZE AS REQUIRED UNO)
- SHEET NOTE DESIGNATION
- FIXTURE DESIGNATION: F1=TYPE (SEE FIXTURE SCH.)
- REVISION DELTA: NUMBER REPRESENTS REVISION
- FEEDER DESIGNATION
- EQUIPMENT CONNECTION

- GROUND FAULT INTERRUPTER DEVICE
- METERING DEVICE
- REMOTE METER
- SHUNT TRIP DEVICE
- TRANSFORMER
- CURRENT TRANSFORMER
- GENERATOR
- MOTOR - # INDICATES HP
- INTERRUPTER SWITCH
- GROUND FAULT RELAY W/ CT OR SENSOR
- FUSE
- CIRCUIT BREAKER
- DRAWOUT CIRCUIT BREAKER
- TRANSFER SWITCH (A-AUTOMATIC, M-MANUAL) # FOR POLES 2, 3 OR 4
- SURGE PROTECTION DEVICE

- NORMALLY OPEN (NO) CONTACT
- NORMALLY CLOSED (NC) CONTACT
- COIL - VOLTAGE PER CONTROL DIAGRAMS
- PILOT LIGHT (LED) PUSH-TO-TEST. LETTER INDICATES COLOR (R=RED, G=GREEN, A=AMBER, Y=YELLOW)
- PILOT LIGHT (LED) NON PUSH-TO-TEST
- THERMAL OVERLOAD
- MAGNETIC OVERLOAD
- PUSH BUTTON NORMALLY OPEN (NO)
- PUSH BUTTON NORMALLY CLOSED (NC)
- HAND-OFF-AUTO (HOA) SELECTOR SWITCH
- LIMIT SWITCH NORMALLY OPEN (NO)
- LIMIT SWITCH NORMALLY CLOSED (NC)
- PUSH BUTTON ILLUMINATED (LED)

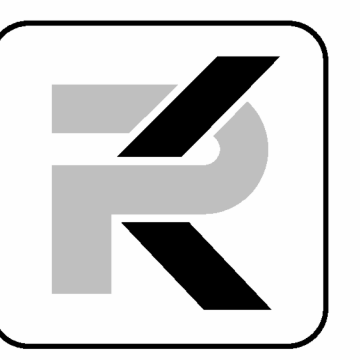
- TICS = NO. OF #12 WIRES (UNO) IF MORE THAN TWO WITHIN RACEWAY. GROUNDING CONDUCTOR (NOT SHOWN) ALWAYS REQUIRED.
- ISOLATED GROUNDING CONDUCTOR
- NEUTRAL CONDUCTOR
- PHASE CONDUCTOR(S)
- BRANCH CIRCUIT (WHEN TIC MARKS ARE NOT SHOWN) = (1) PHASE, (1) NEUTRAL AND (1) GROUNDING CONDUCTOR
- HOMERUN TO PANELBOARD OR DEVICE
- HOMERUN CIRCUIT DESIGNATION
- GROUNDING CONDUCTOR
- NEUTRAL CONDUCTOR (N=1, 2N=2 NEUTRALS, 3N=3 NEUTRALS)
- PHASE CONDUCTOR(S)
- PANELBOARD DESIGNATION
- HOMERUN CIRCUIT DESIGNATION (3 PHASE CIRCUIT SHOWN)
- GROUNDING CONDUCTOR
- PHASE CONDUCTOR(S)
- PANELBOARD DESIGNATION

NOTE: "(E)" IN HOMERUN INDICATES NEW HOMERUN TO EXISTING PANEL

- A AMPS
- ADA AMERICANS WITH DISABILITIES ACT
- AFC ABOVE FINISHED CEILING
- AFCI ARC-FAULT CIRCUIT INTERRUPTER
- AFF ABOVE FINISHED FLOOR
- AFG ABOVE FINISHED GRADE
- AHJ AUTHORITY HAVING JURISDICTION
- AIC AMP INTERRUPTING CAPACITY
- AL ALUMINUM
- ATS AUTOMATIC TRANSFER SWITCH
- AWG AMERICAN WIRE GAUGE
- BC BARE COPPER
- BKR BREAKER
- C CONDUIT/RACEWAY
- CEC CALIFORNIA ENERGY COMMISSION
- CKT CIRCUIT
- CLG CEILING
- CO CONDUIT/RACEWAY ONLY
- CT CURRENT TRANSFORMER
- CU COPPER
- DB DISTRIBUTION BOARD
- DDC DIRECT DIGITAL CONTROLLER
- DPDT DOUBLE-POLE, DOUBLE-THROW
- DPST DOUBLE-POLE, SINGLE-THROW
- DWG DRAWING
- (E) EXISTING TO REMAIN
- ELEC ELECTRICAL
- EM EMERGENCY
- EMT ELECTRICAL METALLIC TUBING
- FUTURE FUTURE
- (F) FULL LOAD AMPS
- FLA FLEXIBLE METAL CONDUIT (STEEL)
- FMC FUSE PER EQUIP. NAMEPLATE
- FPEN GROUND FAULT INTERRUPT
- GFI GROUND FAULT RELAY
- GFR GROUND FAULT RELAY
- GND GROUND
- HID HIGH INTENSITY DISCHARGE
- HOA HAND-OFF-AUTO SWITCH
- HP HORSEPOWER
- HSKP HOUSEKEEPING
- IMG INTERMEDIATE METAL CONDUIT
- J-BOX JUNCTION BOX
- K kcmil (300K = 300 kcmil)
- KVA KILOVOLT AMPS
- KW KILOWATT
- LTG LIGHTING
- IG ISOLATED GROUND
- MCB MAIN CIRCUIT BREAKER
- MCM THOUSAND CIRCULAR MILS
- MFG MANUFACTURER
- MLO MAIN LUGS ONLY
- MS MOTOR STARTER
- MSB MAIN SWITCHBOARD
- MTS MANUAL TRANSFER SWITCH
- NC NORMALLY CLOSED
- NEC NATIONAL ELECTRICAL CODE
- NEMA NATIONAL ELECTRICAL MANUFACTURER'S ASSOCIATION
- NIC NOT IN CONTRACT
- NL NIGHTLIGHT
- NO NORMALLY OPEN
- NTS NOT TO SCALE
- NVE NV ENERGY
- P POLE
- PHØ PHASE
- PV PHOTOVOLTAIC
- PNL PANEL
- PTC PV USA TEST CONDITIONS
- PWR POWER
- (R) RELOCATE/RELOCATED
- (RR) REMOVE AND REPLACE
- RAC RIGID ALUMINUM CONDUIT
- RFC RIGID FIBERGLASS CONDUIT
- RSC RIGID STEEL CONDUIT
- SE SERVICE ENTRANCE
- SPD SURGE PROTECTION DEVICE
- SPDT SINGLE-POLE, DOUBLE-THROW
- SPST SINGLE-POLE, SINGLE-THROW
- STC STANDARD TEST CONDITIONS
- SW SWITCH
- TE TELECOM
- TTB TELEPHONE TERMINATION BOARD
- TYP TYPICAL
- UL UNDERWRITER'S LABORATORY
- UNO UNLESS NOTED OTHERWISE
- UNSW UNSWITCHED
- UPS UNINTERRUPTED POWER SUPPLY
- V VOLTS
- VA VOLT AMPS
- VFD VARIABLE FREQUENCY DRIVE
- W WATTS
- WP WEATHER PROOF
- (X) EXISTING TO BE REMOVED
- XFMR OR XF TRANSFORMER

BREAKERS: 20 = SINGLE POLE CIRCUIT BREAKER 20/2 = TWO POLE CIRCUIT BREAKER 20/3 = THREE POLE CIRCUIT BREAKER 20A = ARC FAULT CIRCUIT BREAKER 20C = CONTROLLABLE CIRCUIT BREAKER 20G = GFI CIRCUIT BREAKER

NOTE: THIS IS A MASTER SYMBOL LIST. IT MAY BE THAT NOT ALL SYMBOLS SHOWN ARE USED WITHIN THIS SET OF PLANS. HEIGHTS GIVEN ARE TO TOP OF BOX.



PK Electrical, Inc.
Engineering - Design - Consulting

681 Sierra Rose Drive, Suite B
Reno, NV 89511
775-825-9010

4601 DTC Boulevard, Suite 740
Denver, CO 80237
720-481-3290
pk@electrical.com
24064



Karen Purcell

BLACK FOREST MAINTENANCE FACILITY
SITE PHOTOMETRIC PLAN
 OWNER: PIONEER LANDSCAPE CENTERS, 630 PLAZA DR., STE. 150, HIGHLANDS RANCH, CO 80129
 PROPERTY ADDRESS: 8335 VOLLMER RD., COLORADO SPRINGS, CO 80908

REVISIONS

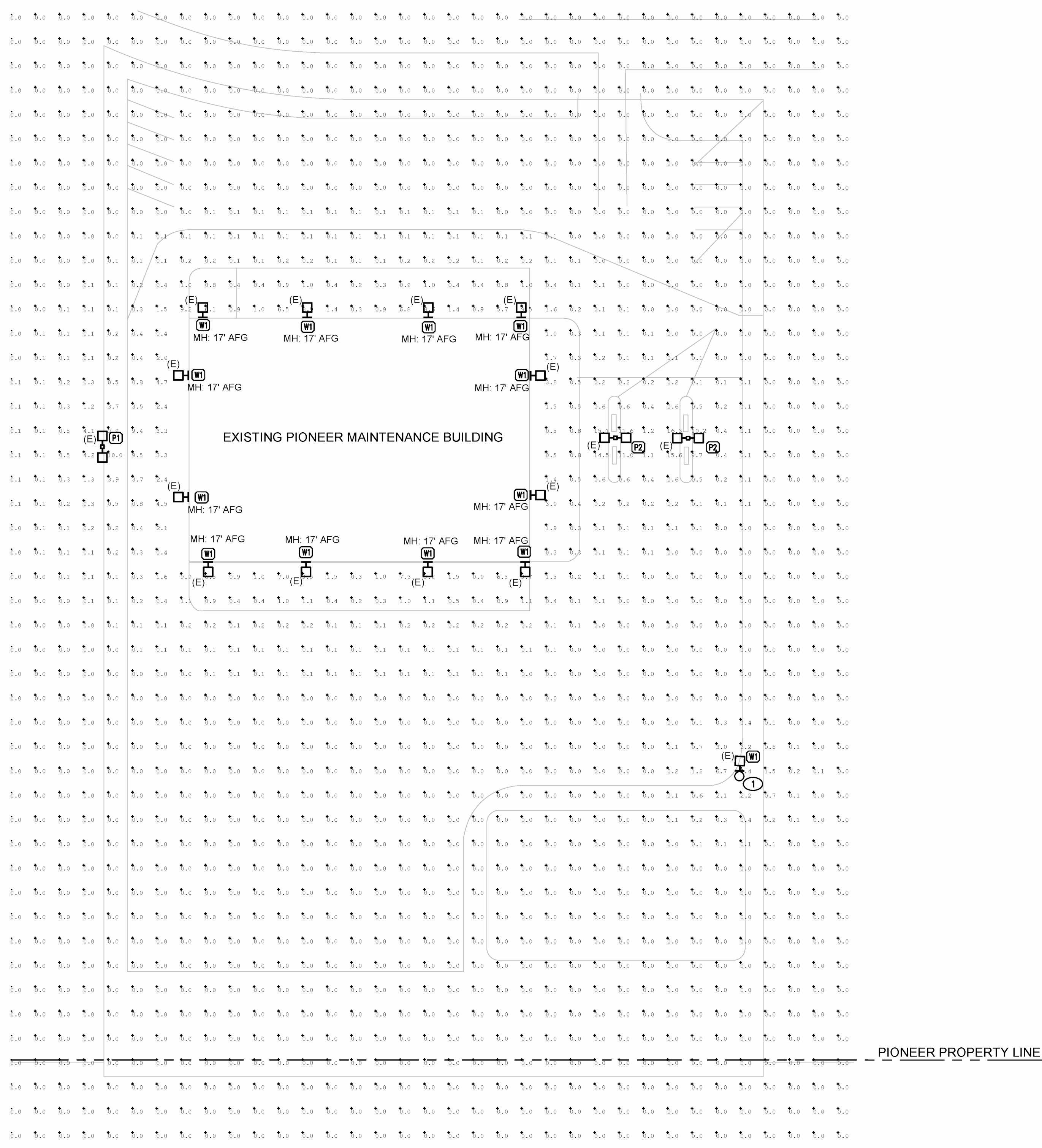
NO.	DESCRIPTION

SHEET TITLE

LEGEND AND GENERAL NOTES

DRAWN: GW
 CHECKED: MAG
 DATE: 03.26.2024
 JOB NUMBER: 24064
 PROJECT MGR: RP

E01



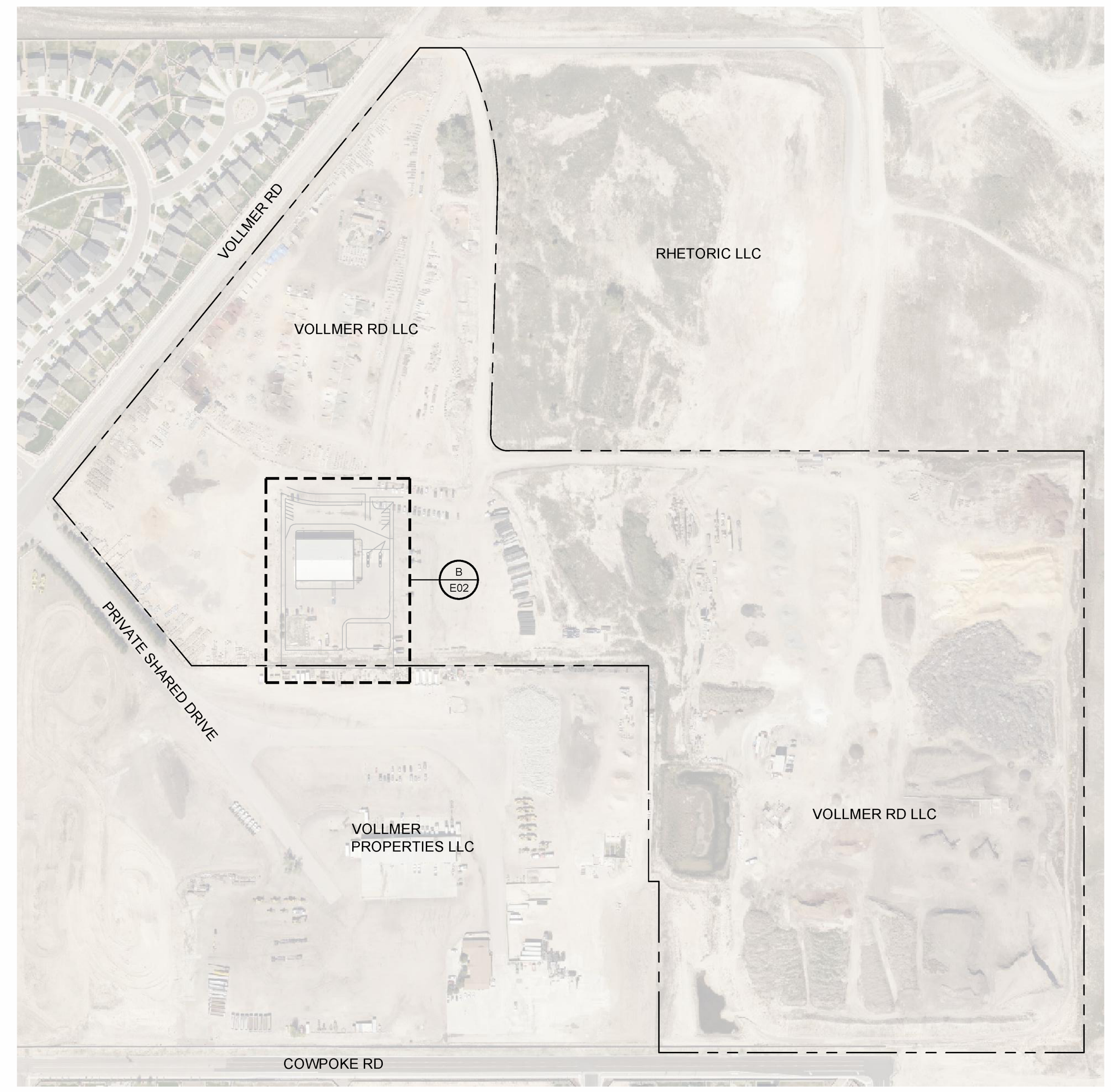
B PHOTOMETRIC STUDY
 E02 SCALE: 1"=30'-0"

GENERAL NOTES

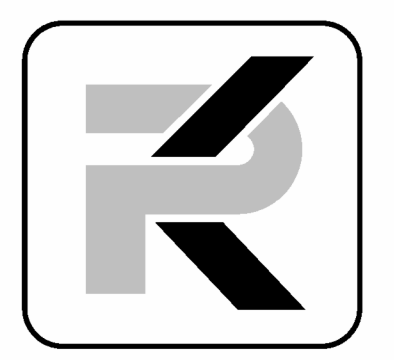
1. ALL W1 LIGHTS SHOWN ARE EXISTING FIXTURES. CALCULATIONS SHOWN USING THE PROVIDED CUT SHEET DATA FOR AN EQUIVALENT FIXTURE TO WHAT IS INSTALLED. CALCULATED WITH 90% DIMMING OF ORIGINAL FIXTURE.
2. SITE PRIMARILY USED FOR PARKING OF VEHICLES. ASSUME ALL LIGHTING FOR PARKING PURPOSES.
3. P1 AND P2 LIGHTS ARE EXISTING POLES FROM ORIGINAL CONSTRUCTION. UNCHANGED SINCE INITIAL CONSTRUCTION.

SHEET NOTES

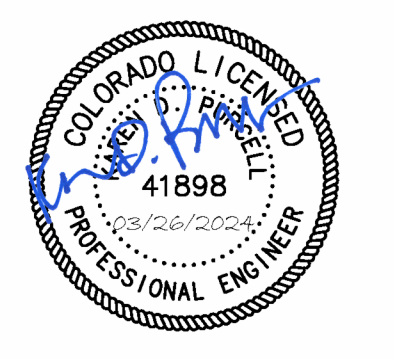
- ① THREE OF EXISTING FOUR FIXTURES ON EXISTING WOOD POLE TO BE REMOVED. REMAINING W1 FIXTURE TO BE LOWERED TO INDICATED 20' AFG.



A KEYMAP
 E02 SCALE: 1"=200'-0"



PK Electrical, Inc.
 Engineering · Design · Consulting
 681 Sierra Rose Drive, Suite B
 Reno, NV 89511
 775-825-9010
 4601 DTC Boulevard, Suite 740
 Denver, CO 80237
 720-481-3290
 pk@pk-electrical.com
 24064



**BLACK FOREST MAINTENANCE FACILITY
 SITE PHOTOMETRIC PLAN**

PROPERTY ADDRESS: 8335 VOLLMER RD. COLORADO SPRINGS, CO 80908
 OWNER: PIONEER LANDSCAPE CENTERS, 630 PLAZA DR., STE. 150, HIGHLANDS RANCH, CO 80129

REVISIONS

SHEET TITLE
 PHOTOMETRIC STUDY

DRAWN:	GW
CHECKED:	MAG
DATE:	03.26.2024
JOB NUMBER:	24064
PROJECT MGR:	RP


E02

Deliver to Michael Centennial, 80015 **Tools & Home Improvement** Search Am EN Hello, Michael Account & Lists Returns & Orders 2 Subtotal \$22.90

All Medical Care Amazon Basics Amazon Business Groceries Livestreams Buy Again Maintenance Month

Tools & Home Improvement Best Sellers Deals & Savings Gift Ideas Power & Hand Tools Lighting & Ceiling Fans Kitchen & Bath Fixtures Smart Home

Tools & Home Improvement • Lighting & Ceiling Fans • Outdoor Lighting • Flood & Security Lights



300W LED Floodlight, 0-10V Dimmable, 140LM, 10000K, IP65 UL Listed, Commercial Grade, Round, 15.3 lbs

One-Day FREE Returns
FREE delivery Tomorrow. Order within 8 hrs 12 mins
Deliver to Michael - Centennial 80015

In Stock
Quantity: 1
Add to Cart
Buy A 2 Similar Products

Ships from Amazon WH LED
Sold by Eligible for Returns, Refund or Replacement...
Payment Secure transaction
See more

Add a Protection Plan:
3-Year Protection for \$13.49
4-Year Protection for \$17.99
Add a gift receipt for easy returns

amazon business
Save up to 3% on this product with business-only pricing.
Create a free account

Color: 300W-Brown
\$45.99
\$49.99 (\$25.00 / Count)
\$39.99 (\$20.00 / Count)
\$49.99
\$69.99

Roll over image to zoom in

Brand ununono
Color 300W-Brown
Material Aluminum
Style American
Light fixture form Floodlight

About this item

- 270° Rotatable Bracket Installation - 300W Outdoor Led Flood Light Is Equipped With 270° Rotatable Bracket, Which Can Be Adjusted To Any Angles And Can Be Installed In Ceiling, Wall, Or Ground.
- High Brightness - This 300W Commercial Outdoor Led Flood Lighting With 300 Ultra-Bright Led Chips(140Lm/W), Can Produce Up To 42,000Lm High Brightness White Light.
- Safe & Reliable - This Led Flood Light Can Work Under The Temperature Range From -4°F To 113°F. The Design Of The Die-Casting Aluminum Structure With A Wide Range Of Radiators Makes It Have Excellent Corrosion Resistance And Heat Dissipation Ability. You Don'T Need To Worry About Water Leakage And Rust Issue.
- IP65 Waterproof - Guarder Series Led Flood Light Ip65 Grade Waterproof, This Led Flood Light Outdoor Is Ideal For Indoor And Outdoor Wet Location, Suitable For Parking Lot, Warehouse, Playground, Stadium, Backyard, Garden, Lawn, Garage, Street, Entrance, Wall, Gates, Billboard Signage, Patio, Flag Poles, As Well As Led Security Light In Hallways, Warehouse, Workshop Etc.
- 5-YEAR WARRANTY & UL CERTIFICATION - UL certification means our products are safer and more secure and we provide a 5-year warranty and you can return within 30 days from the date of purchase. You

2 Similar Products

can contact us if you have any questions, we will provide you with excellent after-sales service.
See more product details Report an issue with this product or seller

Subtotal \$22.90

Product information

Technical Details

Brand	ununono
Color	300W-Brown
Material	Aluminum
Style	American
Light fixture form	Floodlight
Product Dimensions	14.4"L x 5"W x 21.8"H
Power Source	Corded Electric
Special Feature	Waterproof
Control Method	Remote
Light Source Type	LED
Shade Material	Aluminum
Number of Light Sources	1
Included Components	Mounting Hardware
Number of Items	1
Controller Type	Remote Control
Unit Count	1.0 Count
Mounting Type	Wall Mount
Shade Color	White
Fixture Type	Non Removable
Model Name	FL300W
Manufacturer	WHLED
Part Number	FL300W
Item Weight	15.27 pounds
Country of Origin	China
Item model number	FL300W
Special Features	Waterproof
Batteries Included?	No
Batteries Required?	No

Additional Information

ASIN	BOC6PQFVCL
Customer Reviews	4.7 ratings 4.7 out of 5 stars
Best Sellers Rank	#206,084 in Tools & Home Improvement (See Top 100 in Tools & Home Improvement) #970 in Flood Lights
Date First Available	May 31, 2023 2 Similar Products

Warranty & Support

Amazon.com Return Policy: Amazon.com Voluntary 30-Day Return Guarantee: You can return many items you have purchased within 30 days following delivery of the item to you. Our Voluntary 30-Day Return Guarantee does not affect your legal right of withdrawal in any way. You can find out more about the exceptions and conditions here.

Product Warranty: For warranty information about this product, please click here

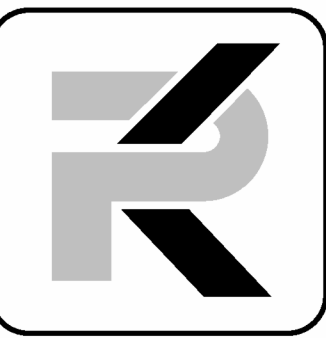
Feedback

Would you like to tell us about a lower price?

Product details

Product Dimensions : 14.4 x 5 x 21.8 inches; 15.3 Pounds
Item model number : FL300W
Date First Available : May 31, 2023
Manufacturer : WHLED
ASIN : BOC6PQFVCL

(B)Design Standards and Requirements. (1)Limitations on Extent of Lighted Area. (a)Concealed or Shielded. Light fixtures shall be arranged and positioned such that the light sources are concealed and fully shielded so that no direct light or reflection creates a nuisance or hazard to any adjacent ownership or right-of-way and that up-light, spill-light, glare, and unnecessary diffusion are minimized. Light fixtures, except as otherwise permitted herein, are required to be full cutoff as defined by the Illuminating Engineers Society of North America (IESNA) The cut-off angle of an exterior light source shall not exceed 90 degrees. Full cut-off fixtures may not be tilted or aimed in a manner that results in light distribution above the horizontal plane. The use of semi-cutoff or cutoff (as opposed to full cutoff) fixtures shall be permitted to illuminate areas other than parking lots provided the pole or mounting point is no more than 10' in height and the maximum lumen output does not exceed 1800 lumens per lamp.(b)Non-Security Lighting During Non-Operating Hours. Exterior lighting, including but not limited to floodlights used to light a building façade, shall be reduced, activated by motion sensor devices, or turned off during the principal use's non-operating hours. Lighting necessary for security shall not be subject to this provision.(c)Upward Lighting. Upward lighting for architectural, landscape or decorative purposes shall have at least 90% of the total distribution pattern within the profile of the illuminated structure or feature. Light fixtures used to illuminate flags, statues, or any other objects mounted on a pole, pedestal, or platform, shall use a narrow cone of light that does not extend beyond the illuminated object.



PK Electrical, Inc.
Engineering • Design • Consulting

681 Sierra Rose Drive, Suite B
Reno, NV 89511
775-826-9010
4601 DTC Boulevard, Suite 740
Denver, CO 80237
720.481.3290
pk@electrical.com
24064



**BLACK FOREST MAINTENANCE FACILITY
SITE PHOTOMETRIC PLAN**

PROPERTY ADDRESS: 8335 VOLLMER RD. COLORADO SPRINGS, CO 80908
OWNER: PIONEER LANDSCAPE CENTERS, 630 PLAZA DR., STE. 150, HIGHLANDS RANCH, CO 80129

REVISIONS

SHEET TITLE

LIGHTING CUT SHEETS

DRAWN: GW
CHECKED: MAG
DATE: 03.26.2024
JOB NUMBER: 24064
PROJECT MGR: RP

E03