

DRAWING SCHEDULE		
		SITE DEVELOPMENT PLAN MARCH 26, 2024
SHEET	DESCRIPTION	
E01	LEGEND AND GENERAL NOTES	
E02	PHOTOMETRIC STUDY	
E03	LIGHTING CUT SHEETS	
TOTAL SHEETS IN ISSUE:		3

LIGHTING FIXTURE SCHEDULE		
LIGHTING FIXTURE CATALOG NUMBERS ARE SERIES TYPE ONLY. PROVIDE TRIMS, BALLASTS, MOUNTING EQUIPMENT, FITTINGS AND LAMPS AS REQUIRED BY THE SPECIFICATIONS AND PROJECT CONDITIONS FOR A COMPLETE INSTALLATION. THIS IS NOT A STANDALONE SCHEDULE AND FIXTURES MUST INCORPORATE ALL WORK INDICATED OR IMPLIED THROUGHOUT THE DRAWINGS AND SPECIFICATIONS.		
SUBSTITUTION DEFINITIONS ● OR EQUAL = EQUAL OR SUPERIOR TO SPECIFIED IN ALL RESPECTS WILL BE ALLOWED. ENGINEER'S PRE-BID APPROVAL IS NOT REQUIRED. PROPOSED EQUAL FIXTURES ARE SUBJECT TO REVIEW DURING THE STANDARD SUBMITTAL PROCESS.  ● NO EQUAL = PROVIDE SPECIFIED FIXTURE. SUBSTITUTIONS ARE NOT ALLOWED.  ● SUBJECT TO REVIEW = EQUAL OR SUPERIOR TO SPECIFIED IN ALL RESPECTS MAY BE ALLOWED ONLY WITH ENGINEER'S APPROVAL. ALL SUBSTITUTIONS MUST BE SUBMITTED AS REQUIRED BY SPECIFICATIONS AND ACCOMPANIED WITH POINT BY POINT LIGHTING CALCULATIONS. DETERMINATION OF EQUAL IS ENGINEER'S SOLE DISCRETION.		
TYPE	SYMBOL	DESCRIPTION AND MANUFACTURER
250W		EXISTING 2-HEAD POLE MOUNTED SHOE BOX METAL HALIDE FIXTURE. POLE: 30" AFG
		LAMP: 250W METAL HALIDE VOLTAGE: UNV MANUFACTURER: *EXISTING* SUBSTITUTIONS: ○ OR EQUAL ○ SUBJECT TO REVIEW ● NO EQUAL
250W		EXISTING 2-HEAD POLE MOUNTED SHOE BOX METAL HALIDE FIXTURE. POLE: 16" AFG
		LAMP: 250W METAL HALIDE VOLTAGE: UNV MANUFACTURER: *EXISTING* SUBSTITUTIONS: ○ OR EQUAL ○ SUBJECT TO REVIEW ● NO EQUAL
300W		JES FILE EQUIVALENT: GFLD-SASE-750-U-WR-VSR OUTDOOR LED FLOOD LIGHT FIXTURE, 0-10V DIMMABLE, 42000LM, IP65  LAMP: LED, 5000K, 42000 LM VOLTAGE: UNV MANUFACTURER: UNUNONO SUBSTITUTIONS: ● OR EQUAL ○ SUBJECT TO REVIEW ○ NO EQUAL

APPROVED

Plan Review

04/10/2024 1:21:08 PM

dsdweeks

EPC Planning & Community Development Department

All new fixtures to be downlit in fixed position.

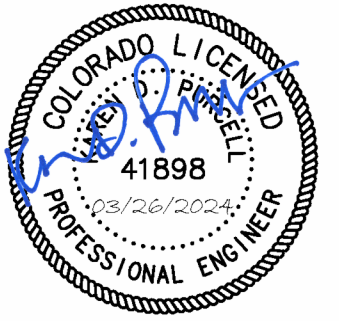
ELECTRICAL LEGEND			
PANELBOARD: SURFACE MOUNTED PANELBOARD: FLUSH MOUNTED SWITCHBOARD OR DISTRIBUTION PANEL TRANSFORMER PULLBOX / VAULT MOTOR STARTER COMBINATION MOTOR STARTER COMBINATION MOTOR STARTER PROVIDED BY OTHERS (COORDINATE WITHSTAND RATINGS WITH EQUIP SUPPLIER) DISCONNECT SWITCH - FUSIBLE (FUSED PER EQUIP. NAMEPLATE) DISCONNECT SWITCH - NON-FUSIBLE DISCONNECT SWITCH PROVIDED BY OTHERS (COORDINATE WITHSTAND RATINGS WITH EQUIP SUPPLIER) VARIABLE FREQUENCY DRIVE VARIABLE FREQUENCY DRIVE PROVIDED BY OTHERS (COORDINATE WITHSTAND RATINGS WITH EQUIP SUPPLIER) ENCLOSED CIRCUIT BREAKER GROUND ROD SHUNT TRIP STATION OR EMERGENCY PUSHBUTTON REMOTE METER	SINGLE RECEPTACLE: 20A, 125V, NEMA 5-20, +18" AFF DUPLEX RECEPTACLE: 20A, 125V, NEMA 5-20, +18" AFF DUPLEX RECEPTACLE: HALF SWITCHED, +18" AFF DUPLEX RECEPTACLE GFI TYPE - 20A, 125V, NEMA 5-20 GFI +18" AFF QUAD RECEPTACLE: 20A, 125V, NEMA 5-20, +18" AFF ISOLATED GROUND TYPE RECEPTACLE (ORANGE TRIANGLE), 20A, 125V, NEMA 5-20IG, +18" AFF COMBO DUAL USB CHARGER / DUPLEX RECEPTACLE, 5.1A, (1) TYPE A & (1) TYPE C USB (3.1, 3.0, 2.0 AND 1.1 COMPATIBLE), 20A, 125V, NEMA 5-20R, +18AFF QUAD USB CHARGER, 5.1A, (2) TYPE A & (2) TYPE C USB (3.1, 3.0, 2.0 AND 1.1 COMPATIBLE), +18AFF SPECIAL PURPOSE RECEPTACLE: SEE DWGS FOR NEMA CONFIGURATION DUPLEX RECEPTACLE: FLOOR MOUNTED QUAD RECEPTACLE: FLOOR MOUNTED DUPLEX RECEPTACLE: CEILING MOUNTED QUAD RECEPTACLE: CEILING MOUNTED BLANK GFCI PROTECTIVE DEVICE IN READILY ACCESSIBLE LOCATION (LABEL PROTECTED DEVICES) DUPLEX "CLOCK" RECEPTACLE: 125V, NEMA 5-20R, +60" AFF DEVICE MOUNTED AT NON-STANDARD HEIGHT. IF NO HEIGHT SHOWN VERIFY HEIGHT WITH ARCHITECT MULTI-OUTLET ASSEMBLY: SPACING PER DWGS	GROUND FAULT INTERRUPTER DEVICE METERING DEVICE REMOTE METER SHUNT TRIP DEVICE TRANSFORMER CURRENT TRANSFORMER GENERATOR MOTOR - # INDICATES HP INTERRUPTER SWITCH GROUND FAULT RELAY W/ CT OR SENSOR FUSE CIRCUIT BREAKER DRAWOUT CIRCUIT BREAKER TRANSFER SWITCH (A=AUTOMATIC, M=MANUAL) # FOR POLES 2, 3 OR 4 SURGE PROTECTION DEVICE	NORMALLY OPEN (NO) CONTACT NORMALLY CLOSED (NC) CONTACT COIL - VOLTAGE PER CONTROL DIAGRAMS PILOT LIGHT (LED) PUSH-TO-TEST, LETTER INDICATES COLOR (R=RED, G=GREEN, A=AMBER, Y=YELLOW) PILOT LIGHT (LED) NON PUSH-TO-TEST THERMAL OVERLOAD MAGNETIC OVERLOAD PUSH BUTTON NORMALLY OPEN (NO) PUSH BUTTON NORMALLY CLOSED (NC) HAND-OFF-AUTO (HOA) SELECTOR SWITCH LIMIT SWITCH NORMALLY OPEN (NO) LIMIT SWITCH NORMALLY CLOSED (NC) PUSH BUTTON ILLUMINATED (LED)
CONDUIT/RACEWAY IN WALL OR ABOVE CEILING CONDUIT/RACEWAY BELOW GRADE OR BELOW FLOOR BREAK OR RUN CONTINUES OVERHEAD SERVICE PRIMARY SECONDARY COMMUNICATIONS OR SIGNAL TELEPHONE TELEVISION LOW VOLTAGE AND/OR CONTROL WIRING EMERGENCY CIRCUIT CONDUIT/RACEWAY STUB OUT: MARK AND CAP (SITE) CONDUIT/RACEWAY SLEEVE	DATA / VOICE OUTLET: 18" AFF - 1 VOICE, 1 DATA JACK, 2 BLANKS DATA / VOICE OUTLET: FLOOR MOUNTED MULTI-OUTLET ASSEMBLY: SPACING PER DWGS TELEPHONE OUTLET: 18" AFF DATA OUTLET: 18" AFF DEVICE MOUNTED AT NON-STANDARD HEIGHT. IF NO HEIGHT SHOWN VERIFY HEIGHT WITH ARCHITECT SPEAKER TELEVISION OUTLET: 18" AFF (UNO) TELEPHONE TERMINAL BOARD (TTB) VOLUME CONTROL GROUNDING BAR	TICS = NO. OF #12 WIRES (UNO) IF MORE THAN TWO WITHIN RACEWAY. GROUNDING CONDUCTOR (NOT SHOWN) ALWAYS REQUIRED. ISOLATED GROUNDING CONDUCTOR NEUTRAL CONDUCTOR PHASE CONDUCTOR(S) BRANCH CIRCUIT (WHEN TIC MARKS ARE NOT SHOWN) = (1) PHASE, (1) NEUTRAL AND (1) GROUNDING CONDUCTOR HOMERUN TO PANELBOARD OR DEVICE HOMERUN CIRCUIT DESIGNATION GROUNDING CONDUCTOR NEUTRAL CONDUCTOR (N=1, 2N=2 NEUTRALS, 3N=3 NEUTRALS) PHASE CONDUCTOR(S) PANELBOARD DESIGNATION HOMERUN CIRCUIT DESIGNATION (3 PHASE CIRCUIT SHOWN) GROUNDING CONDUCTOR PHASE CONDUCTOR(S) PANELBOARD DESIGNATION NOTE: "(E)" IN HOMERUN INDICATES NEW HOMERUN TO EXISTING PANEL	A AMPS ADA AMERICANS WITH DISABILITIES ACT AFC ABOVE FINISHED CEILING AFCI ARC-FAULT CIRCUIT INTERRUPTER AFF ABOVE FINISHED FLOOR AFG ABOVE FINISHED GRADE AHJ AUTHORITY HAVING JURISDICTION AIC AMP INTERRUPTING CAPACITY AL ALUMINUM ATS AUTOMATIC TRANSFER SWITCH AWG AMERICAN WIRE GAUGE BC BARE COPPER BKR BREAKER C CONDUIT/RACEWAY CEC CALIFORNIA ENERGY COMMISSION CKT CIRCUIT CLG CEILING CO CONDUIT/RACEWAY ONLY CT CURRENT TRANSFORMER CU COPPER DB DISTRIBUTION BOARD DDC DIRECT DIGITAL CONTROLLER DPDT DOUBLE-POLE, DOUBLE-THROW DPST DOUBLE-POLE, SINGLE-THROW DWG DRAWING (E) EXISTING TO REMAIN ELEC ELECTRICAL EM EMERGENCY EMT ELECTRICAL METALLIC TUBING FUT FUTURE (F) FULL LOAD AMPS FLA FLEXIBLE METAL CONDUIT (STEEL) FMC FUSE PER EQUIP. NAMEPLATE FPEN GROUND FAULT INTERRUPT GFI GROUND FAULT RELAY GFR GROUND GND GROUND HID HIGH INTENSITY DISCHARGE HOA HAND-OFF-AUTO SWITCH HP HORSEPOWER HSPK HOUSEKEEPING IMC INTERMEDIATE METAL CONDUIT J-BOX JUNCTION BOX K kcmil (300K = 300 kcmil) KVA KILOVOLT AMPS KW KILOWATT LTG LIGHTING IG ISOLATED GROUND MCB MAIN CIRCUIT BREAKER MCM THOUSAND CIRCULAR MILS MFG MANUFACTURER MLO MAIN LUGS ONLY MS MOTOR STARTER MSB MAIN SWITCHBOARD MTS MANUAL TRANSFER SWITCH NC NORMALLY CLOSED NEC NATIONAL ELECTRICAL CODE NEMA MANUFACTURER'S ASSOCIATION NIC NOT IN CONTRACT NL NIGHTLIGHT NO NORMALLY OPEN NTS NOT TO SCALE NVE NV ENERGY P POLE PHØ PHASE PV PHOTOVOLTAIC PNL PANEL PTC PV USA TEST CONDITIONS PWR POWER (R) RELOCATE/RELOCATED RAC REMOVE AND REPLACE RAC RIGID ALUMINUM CONDUIT RFC RIGID FIBERGLASS CONDUIT RSC RIGID STEEL CONDUIT SE SERVICE ENTRANCE SPD SURGE PROTECTION DEVICE SPDT SINGLE-POLE, DOUBLE-THROW SPST SINGLE-POLE, SINGLE-THROW STC STANDARD TEST CONDITIONS SW SWITCH TE TELECOM TTB TELEPHONE TERMINATION BOARD TYP TYPICAL UL UNDERWRITER'S LABORATORY UNO UNLESS NOTED OTHERWISE UNSW UNSWITCHED UPS UNINTERRUPTED POWER SUPPLY V VOLTS VA VOLT AMPS VFD VARIABLE FREQUENCY DRIVE W WATTS WP WEATHER PROOF (X) EXISTING TO BE REMOVED XFMR OR XF TRANSFORMER
BREAKERS: 20 = SINGLE POLE CIRCUIT BREAKER 20/2 = TWO POLE CIRCUIT BREAKER 20/3 = THREE POLE CIRCUIT BREAKER 20A = ARC FAULT CIRCUIT BREAKER 20C = CONTROLLABLE CIRCUIT BREAKER 20G = GFI CIRCUIT BREAKER			

NOTE: THIS IS A MASTER SYMBOL LIST. IT MAY BE THAT NOT ALL SYMBOLS SHOWN ARE USED WITHIN THIS SET OF PLANS. HEIGHTS GIVEN ARE TO TOP OF BOX.



PK Electrical, Inc.  
Engineering · Design · Consulting

681 Sierra Rose Drive, Suite B  
Reno, NV 89511  
775-826-9010  
  
4601 DTC Boulevard, Suite 740  
Denver, CO 80237  
720.481.3250  
pk@electrical.com  
24064



Karen Purcell  
Professional Engineer  
No. 41898  
Exp. 12/31/2024

BLACK FOREST MAINTENANCE FACILITY  
SITE PHOTOMETRIC PLAN

OWNER: PIONEER LANDSCAPE CENTERS, 630 PLAZA DR., STE. 150, HIGHLANDS RANCH, CO 80129  
PROPERTY ADDRESS: 8335 VOLLMER RD. COLORADO SPRINGS, CO 80908

REVISIONS

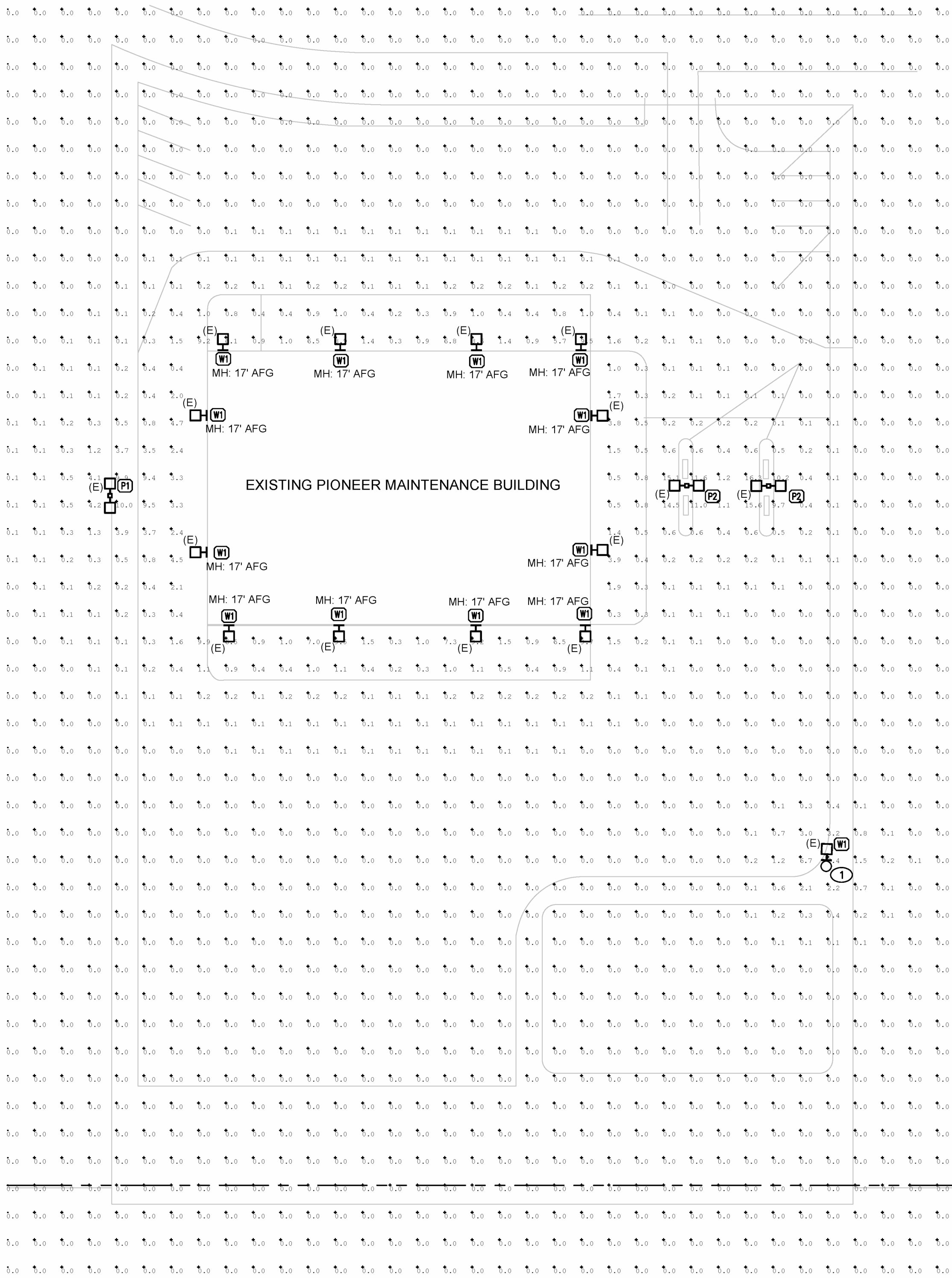
SHEET TITLE

LEGEND AND GENERAL NOTES

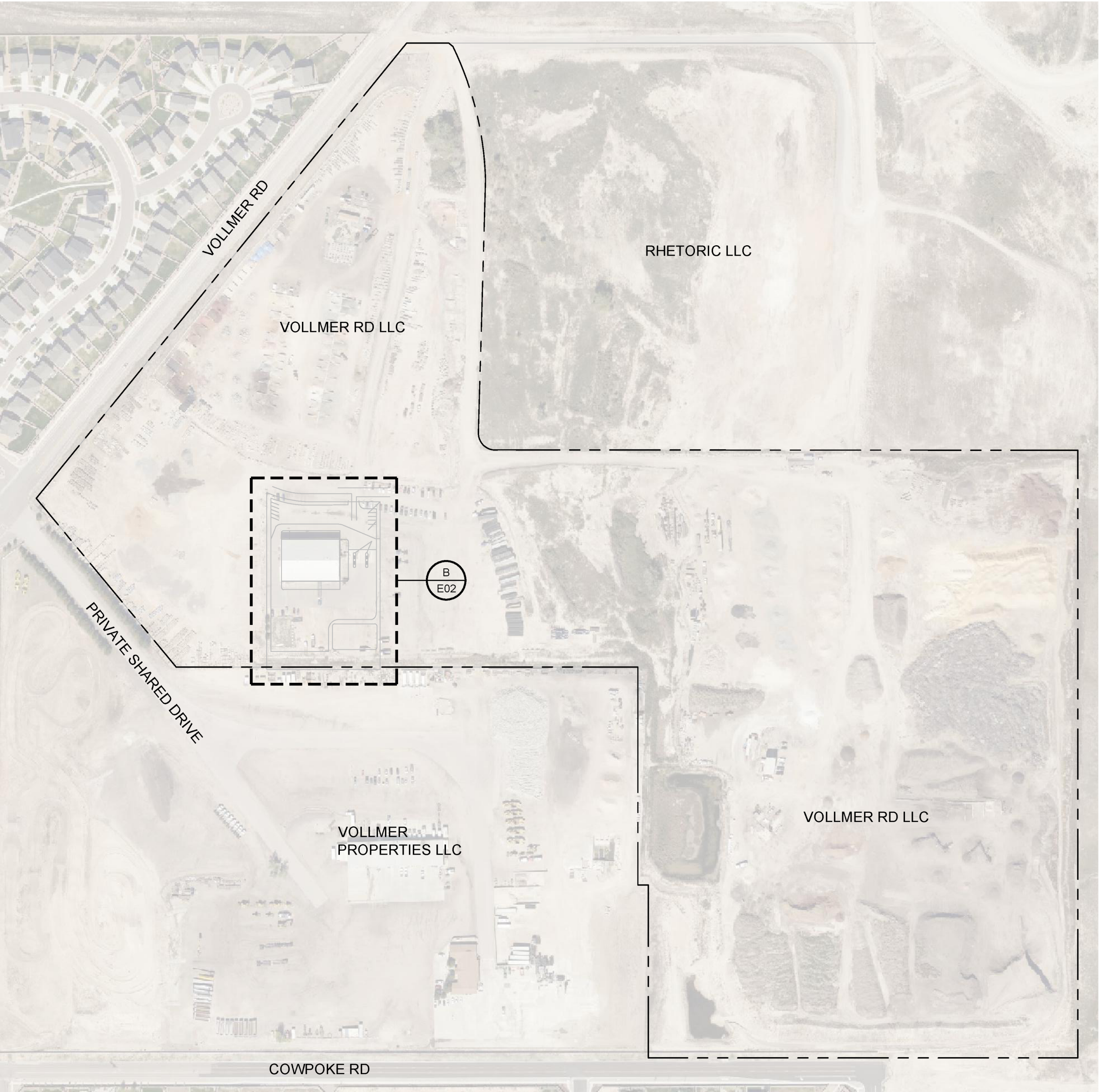
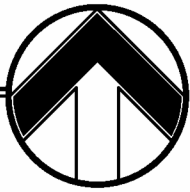
DRAWN: GW  
CHECKED: MAG  
DATE: 03.26.2024  
JOB NUMBER: 24064  
PROJECT MGR: RP

E01

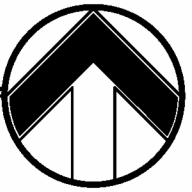




**B**  
E02  
PHOTOMETRIC STUDY  
SCALE: 1"=30'-0"



**A**  
E02  
KEYMAP  
SCALE: 1"=200'-0"



### GENERAL NOTES

- ALL W1 LIGHTS SHOWN ARE EXISTING FIXTURES. CALCULATIONS SHOWN USING THE PROVIDED CUT SHEET DATA FOR AN EQUIVALENT FIXTURE TO WHAT IS INSTALLED. CALCULATED WITH 90% DIMMING OF ORIGINAL FIXTURE.
- SITE PRIMARILY USED FOR PARKING OF VEHICLES. ASSUME ALL LIGHTING FOR PARKING PURPOSES.
- P1 AND P2 LIGHTS ARE EXISTING POLES FROM ORIGINAL CONSTRUCTION. UNCHANGED SINCE INITIAL CONSTRUCTION.

### SHEET NOTES

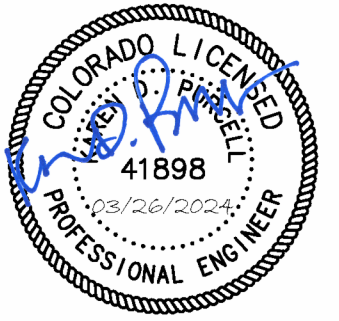
- ① THREE OF EXISTING FOUR FIXTURES ON EXISTING WOOD POLE TO BE REMOVED. REMAINING W1 FIXTURE TO BE LOWERED TO INDICATED 20' AFG.



**PK Electrical, Inc.**  
Engineering • Design • Consulting

681 Sierra Rose Drive, Suite B  
Reno, NV 89511  
775-826-9010

4601 DTC Boulevard, Suite 740  
Denver, CO 80237  
720.481.3250  
pk-electrical.com  
24064



## BLACK FOREST MAINTENANCE FACILITY SITE PHOTOMETRIC PLAN

PROPERTY ADDRESS: 8335 VOLLMER RD. COLORADO SPRINGS, CO 80908  
OWNER: PIONEER LANDSCAPE CENTERS, 630 PLAZA DR, STE. 150, HIGHLANDS RANCH, CO 80129

#### REVISIONS


#### SHEET TITLE

PHOTOMETRIC STUDY

DRAWN:	GW
CHECKED:	MAG
DATE:	03.26.2024
JOB NUMBER:	24064
PROJECT MGR:	RP

E02





581 Sierra Rose Drive, Suite B  
Reno, NV 89511  
775.826.9010

4601 DTC Boulevard, Suite 740  
Denver, CO 80237  
720.481.3290  
pkelectrical.com  
24064



PROPERTY ADDRESS: 8335 VOLLMER RD. COLORADO SPRINGS, CO 80908  
OWNER: PIONEER LANDSCAPE CENTERS, 630 PLAZA DR. STE. 150, HIGHLANDS RANCH

PROPERTY ADDRESS: 8333 VOLLMER RD. COLORADO SPRINGS, CO 80908  
OWNER: PIONEER LANDSCAPE CENTERS, 630 PLAZA DR, STE. 150, HIGHLANDS RANCH, CO 80129


## REVISIONS

SHEET TITLE


## LIGHTING CUT SHEETS

DRAWN:	GW
CHECKED:	MAC
DATE:	03.26.202
JOB NUMBER:	2406
PROJECT MGR:	RA

# E03



\$69.99



\$59.99

**Brand** unumono

**Color** 300W-800W

**Material** Aluminum



**Style** American

**Light fixture form** Floodlight

**About this item**

- **270° Rotatable Bracket**  
Installation - 300W Outdoor Led Flood Light Is Equipped With 270° Rotatable Bracket, Which Can Be Adjusted To Any Angles And Can Be Installed In Ceiling, Wall, Or Ground.
- **High Brightness** : This 300W Commercial Outdoor Led Flood Lighting With 500 Ultra-Bright Led Chips(140Lm/W), Can Produce Up To 42,000LM High Brightness White Light.
- **Safe & Reliable**. This Led Flood Light Can Work Under The Temperature Range From -4°F To 113°F. The Design Of The Die-Casting Aluminum Structure With A Wide Range Of Radiators Makes It Have Excellent Corrosion Resistance And Heat Dissipation Ability. You Don't Need To Worry About Water Leakage And Rust Issue.
- **IP65 Waterproof** - Guarder Series Led Flood Light Ip65 Grade Waterproof, This Led Flood Light Outdoor Is Ideal For Indoor And Outdoor Wet Location, Suitable For Parking Lot, Warehouse, Playground, Stadium, Backyard, Garden, Lawn, Garage, Street, Entrance, Wall, Eaves, Billboard Signage, Patio, Flag Poles, As Well As Led Security Light In Hallways, Warehouse, Workshop Etc.
- **5-YEAR WARRANTY & UL CERTIFICATION** - UL certification means our products are safer and more secure and we provide a 5-year warranty and you can return within 30 days from the date of purchase. You

**Subtotal**  
**\$22.90**

**2 Similar Products**

[illegible]