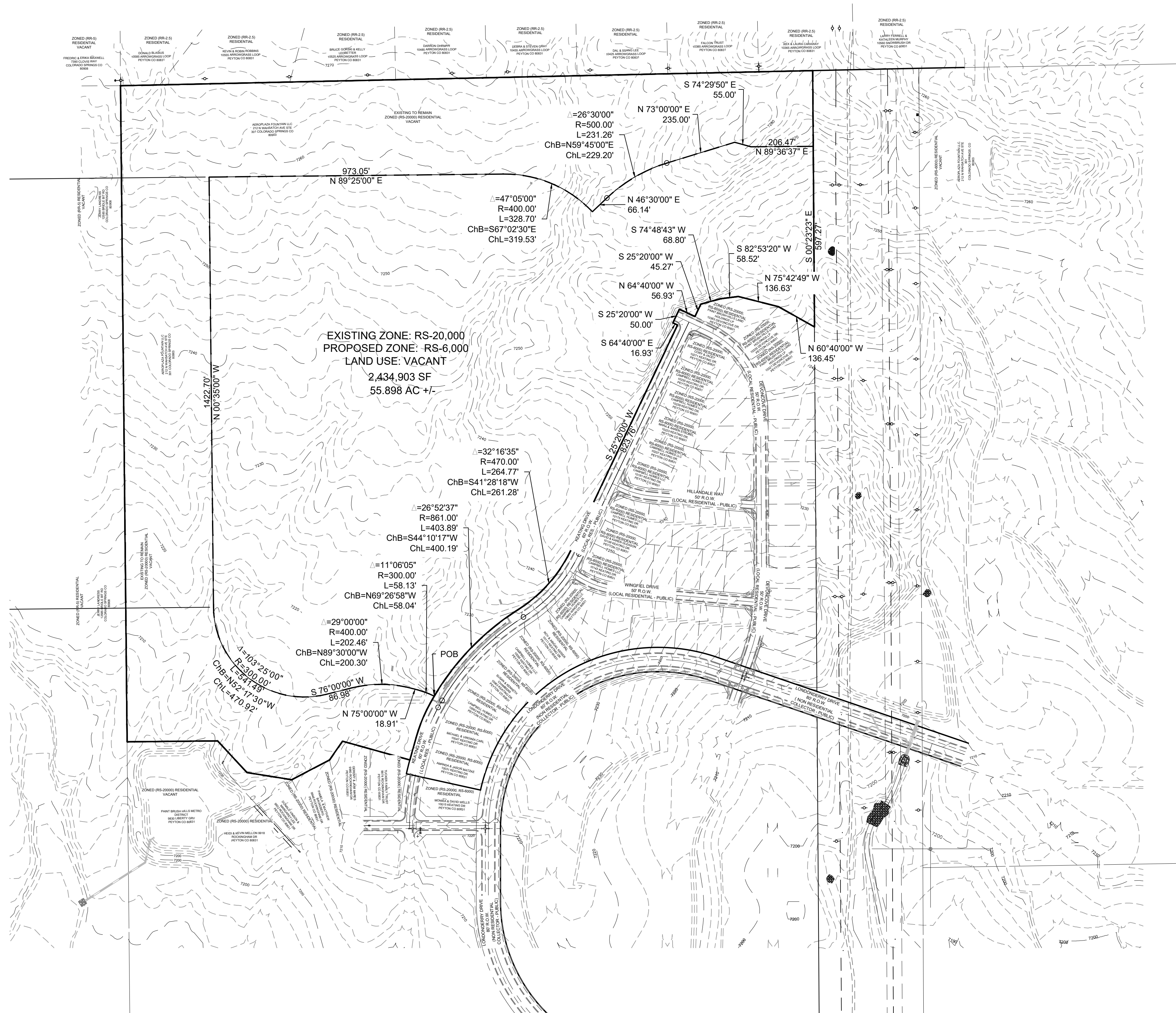


# PAINT BRUSH HILLS FILING 14 ZONE CHANGE MAP



### LEGAL DESCRIPTION: PAINT BRUSH HILLS RS-6000

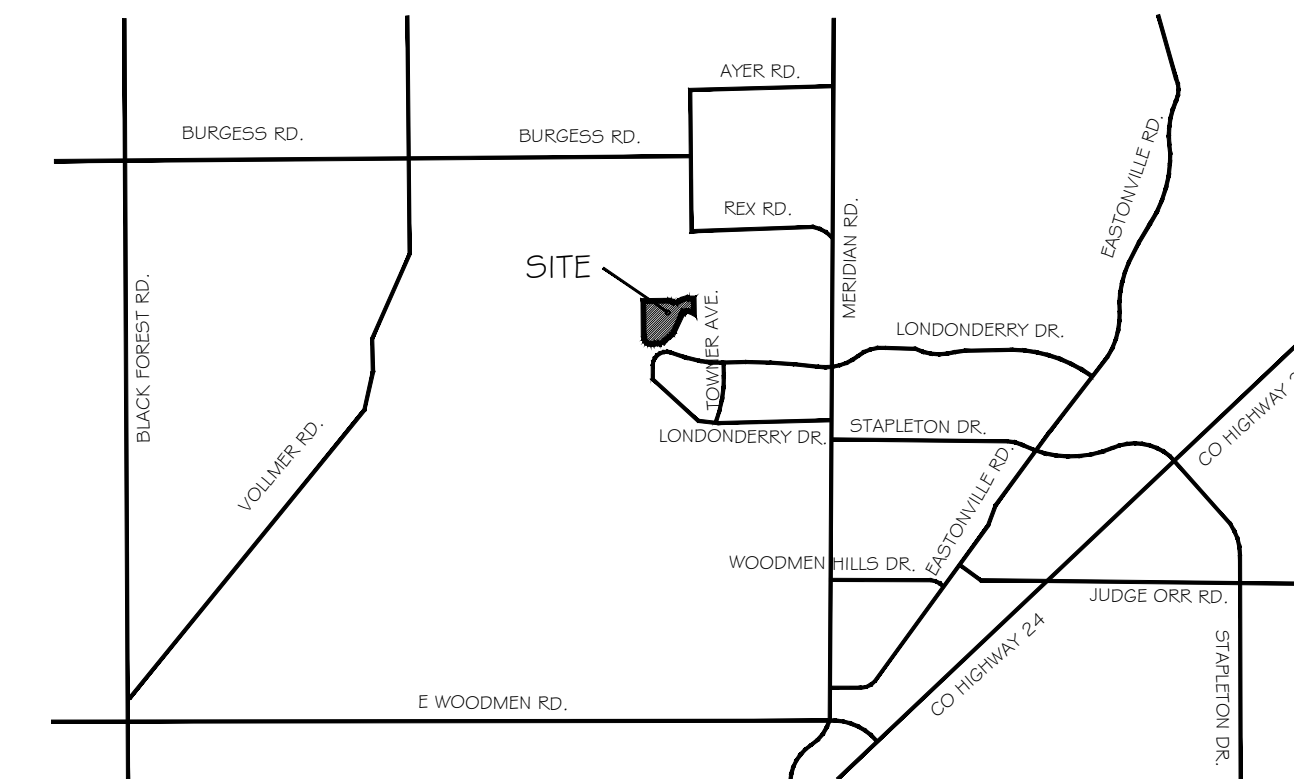
A PARCEL OF LAND IN THE NORTHEAST QUARTER (NE 1/4) OF SECTION 26, T12S, R65W OF THE 6TH P. M., EL PASO COUNTY, COLORADO, SAID PARCEL BEING A PORTION OF TRACT E, "PAINT BRUSH HILLS FILING NO. 13E", RECORDED UNDER RECEPTION NO. 219714420 IN THE RECORDS OF EL PASO COUNTY, COLORADO, BEING MORE PARTICULARLY DESCRIBED AS FOLLOWS.

**BASIS OF BEARING:** THE SECTION LINE BEING THE NORTH LINE OF TRACT A, TRACT E, AND A PORTION OF TRACT F "PAINT BRUSH HILLS FILING NO. 13E", AS RECORDED UNDER RECEPTION NO. 219714420, BEING MONUMENTED AT THE QUARTER CORNER COMMON TO SECTIONS 23 AND 26, T12S, R65W OF THE 6TH P. M. WITH A 2.5" ALUMINUM CAP ON NO. 6 REBAR STAMPED "1/4 COR, S23 S26, 1999, PLS 4842", AND AT THE SECTION CORNER COMMON TO SECTIONS 23, 24, 25 AND 26 WITH A 1.5" ALUMINUM CAP ON NO. 5 REBAR STAMPED "(PARTIALLY ILLIGIBLE) LS 9646", SAID LINE BEARS N88°44'51"E A DISTANCE OF 2640.30 FEET.

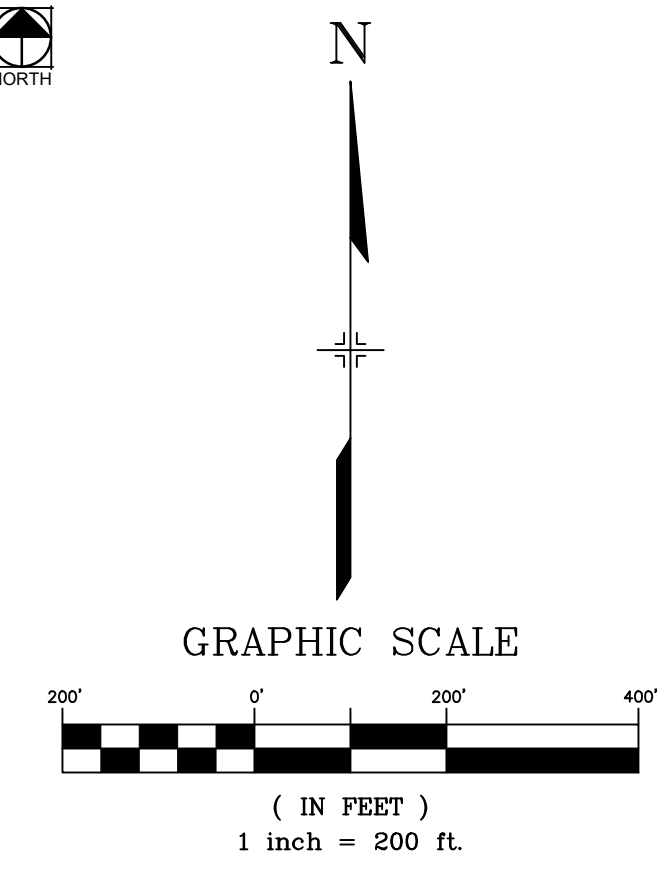
COMMENCING AT A POINT ON THE SOUTHERLY BOUNDARY OF SAID TRACT E, SAID POINT ALSO BEING THE NORTHEAST CORNER OF LOT 2, "PAINT BRUSH HILLS FILING NO. 12" AS RECORDED UNDER RECEPTION NUMBER 205077511 IN THE RECORDS OF EL PASO COUNTY, COLORADO, TOWNSHIP 12 SOUTH, RANGE 65 WEST OF THE SIXTH PRINCIPAL MERIDIAN, EL PASO COUNTY, COLORADO;  
 THENCE N15°35'00"E A DISTANCE OF 76.76 FEET;  
 THENCE ALONG THE ARC OF A CURVE TO THE RIGHT, SAID CURVE HAVING A RADIUS OF 530.00 FEET, A CENTRAL ANGLE OF 13°23'30" (THE CHORD OF WHICH BEARS N22°16'45"E A DISTANCE OF 123.59 FEET), AN ARC DISTANCE OF 123.88 FEET TO THE POINT OF COMPOUND CURVE;  
 THENCE ALONG THE ARC OF A CURVE TO THE RIGHT, SAID CURVE HAVING A RADIUS OF 861.00 FEET, A CENTRAL ANGLE OF 1°45'29" (THE CHORD OF WHICH BEARS N29°51'14"E A DISTANCE OF 26.42 FEET), AN ARC DISTANCE OF 26.42 FEET TO THE POINT OF BEGINNING;  
 THENCE ALONG THE ARC OF A CURVE TO THE LEFT, SAID CURVE HAVING A RADIUS OF 300.00 FEET, A CENTRAL ANGLE OF 11°06'05" (THE CHORD OF WHICH BEARS N69°26'58"W A DISTANCE OF 58.04 FEET), AN ARC DISTANCE OF 58.13 FEET TO A POINT OF TANGENCY;  
 THENCE N75°00'00"W A DISTANCE OF 18.91 FEET;  
 THENCE ALONG THE ARC OF A CURVE TO THE LEFT, SAID CURVE HAVING A RADIUS OF 400.00 FEET, A CENTRAL ANGLE OF 29°00'00" (THE CHORD OF WHICH BEARS N89°30'00"W A DISTANCE OF 200.30 FEET), AN ARC DISTANCE OF 202.46 FEET TO A POINT OF TANGENCY;  
 THENCE S76°00'00"W A DISTANCE OF 86.98 FEET;

THENCE ALONG THE ARC OF A CURVE TO THE RIGHT, SAID CURVE HAVING A RADIUS OF 300.00 FEET, A CENTRAL ANGLE OF 103°25'00" (THE CHORD OF WHICH BEARS N52°17'30"W A DISTANCE OF 470.92 FEET), AN ARC DISTANCE OF 541.49 FEET TO A POINT OF TANGENCY;  
 THENCE N00°35'00"W A DISTANCE OF 1422.70 FEET;  
 THENCE N89°25'00"E A DISTANCE OF 973.05 FEET;  
 THENCE ALONG THE ARC OF A CURVE TO THE RIGHT, SAID CURVE HAVING A RADIUS OF 400.00 FEET, A CENTRAL ANGLE OF 47°05'00" (THE CHORD OF WHICH BEARS S67°02'30"W A DISTANCE OF 319.53 FEET), AN ARC DISTANCE OF 328.70 FEET TO A RADIAL LINE;  
 THENCE N46°30'00"E A DISTANCE OF 66.14 FEET;  
 THENCE ALONG THE ARC OF A CURVE TO THE LEFT, SAID CURVE HAVING A RADIUS OF 500.00 FEET, A CENTRAL ANGLE OF 26°30'00" (THE CHORD OF WHICH BEARS N59°45'00"W A DISTANCE OF 229.20 FEET), AN ARC DISTANCE OF 231.26 FEET TO A POINT OF TANGENCY;  
 THENCE N73°00'00"E A DISTANCE OF 235.00 FEET;  
 THENCE S44°29'50"W A DISTANCE OF 55.00 FEET;  
 THENCE N89°36'37"E A DISTANCE OF 206.47 FEET;  
 THENCE N00°33'24"E A DISTANCE OF 597.27 FEET;  
 THENCE N60°40'00"W A DISTANCE OF 136.45 FEET;  
 THENCE N75°42'49"W A DISTANCE OF 136.63 FEET;  
 THENCE S82°53'20"W A DISTANCE OF 58.52 FEET;  
 THENCE S74°48'43"W A DISTANCE OF 68.80 FEET;  
 THENCE S25°20'00"W A DISTANCE OF 45.27 FEET;  
 THENCE S64°40'00"E A DISTANCE OF 16.93 FEET;  
 THENCE S25°20'00"W A DISTANCE OF 50.00 FEET;  
 THENCE S25°20'00"W A DISTANCE OF 56.93 FEET;  
 THENCE N73°00'00"E A DISTANCE OF 235.00 FEET;  
 THENCE S44°29'50"W A DISTANCE OF 55.00 FEET;  
 THENCE N89°36'37"E A DISTANCE OF 206.47 FEET;  
 THENCE N00°33'24"E A DISTANCE OF 597.27 FEET;  
 THENCE N60°40'00"W A DISTANCE OF 136.45 FEET;  
 THENCE N75°42'49"W A DISTANCE OF 136.63 FEET;  
 THENCE S82°53'20"W A DISTANCE OF 58.52 FEET;  
 THENCE S74°48'43"W A DISTANCE OF 68.80 FEET;  
 THENCE S25°20'00"W A DISTANCE OF 45.27 FEET;  
 THENCE S64°40'00"E A DISTANCE OF 16.93 FEET;  
 THENCE S25°20'00"W A DISTANCE OF 50.00 FEET;  
 THENCE S25°20'00"W A DISTANCE OF 56.93 FEET;  
 THENCE N73°00'00"E A DISTANCE OF 235.00 FEET TO A POINT ON CURVE;  
 THENCE S25°20'00"W A DISTANCE OF 823.76 FEET TO A POINT ON CURVE;  
 THENCE ALONG THE ARC OF A CURVE TO THE RIGHT, SAID CURVE HAVING A RADIUS OF 470.00 FEET, A CENTRAL ANGLE OF 32°16'35" (THE CHORD OF WHICH BEARS S41°28'18"W A DISTANCE OF 261.28 FEET), AN ARC DISTANCE OF 264.77 FEET TO A POINT OF REVERSE CURVE;  
 THENCE ALONG THE ARC OF A CURVE TO THE LEFT, SAID CURVE HAVING A RADIUS OF 861.00 FEET, A CENTRAL ANGLE OF 26°52'37" (THE CHORD OF WHICH BEARS S44°10'17"W A DISTANCE OF 403.89 FEET), AN ARC DISTANCE OF 403.89 FEET TO THE POINT OF BEGINNING.

SAID PARCEL CONTAINS A CALCULATED AREA OF 2,434,903 S.F. (55.898 ACRES) MORE OR LESS.



VICINITY MAP  
N.T.S. NORTH



**Owner/ Developer:**  
AEROPLAZA FOUNTAIN LLC  
212 N WAHSATCH AVE STE 301  
COLORADO SPRINGS CO 80903

**Planners:**  
MATRIX DESIGN GROUP  
2435 RESEARCH PKWY, SUITE 300  
COLORADO SPRINGS, CO 80920

CONSULTANTS:  
PLANNER:  
**Matrix**  
2435 RESEARCH PARKWAY, SUITE 300  
COLORADO SPRINGS, CO 80920  
PHONE: (719) 575-0100  
FAX: (719) 575-0208

OWNER/DEVELOPER:  
**AEROPLAZA FOUNTAIN LLC**  
212 N WAHSATCH AVE, SUITE 301  
COLORADO SPRINGS, CO 80903  
PH: (719) 635-3200

PROJECT:  
**PAINT BRUSH HILLS FIL. NO 14**

EL PASO COUNTY, CO  
SEPTEMBER, 2020

REVISION HISTORY:

NO.	DATE	DESCRIPTION	BY

DRAWING INFORMATION:  
PROJECT NO: 20.1129  
DRAWN BY: JRA  
CHECKED BY: JRA  
APPROVED BY: JRA

## ZONE MAP

**ZC01**  
SHEET 1 OF 1