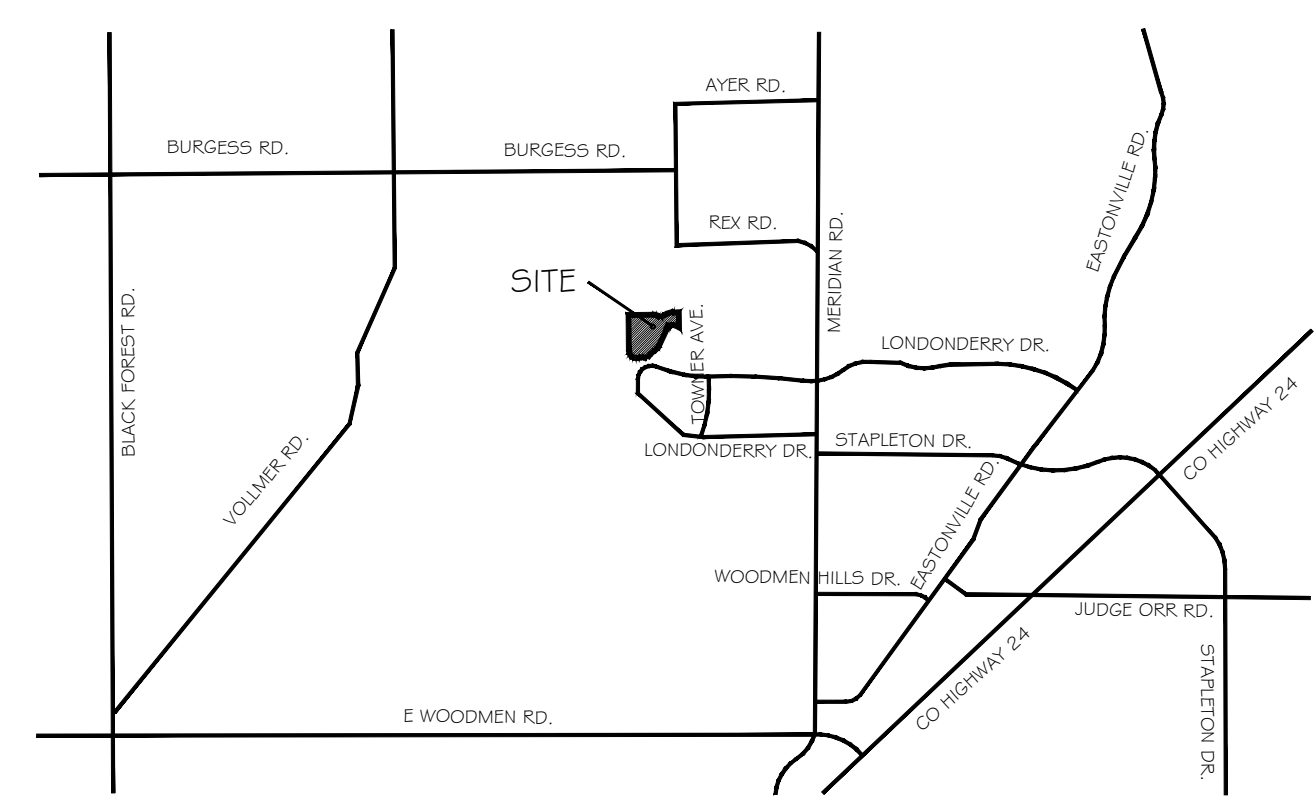
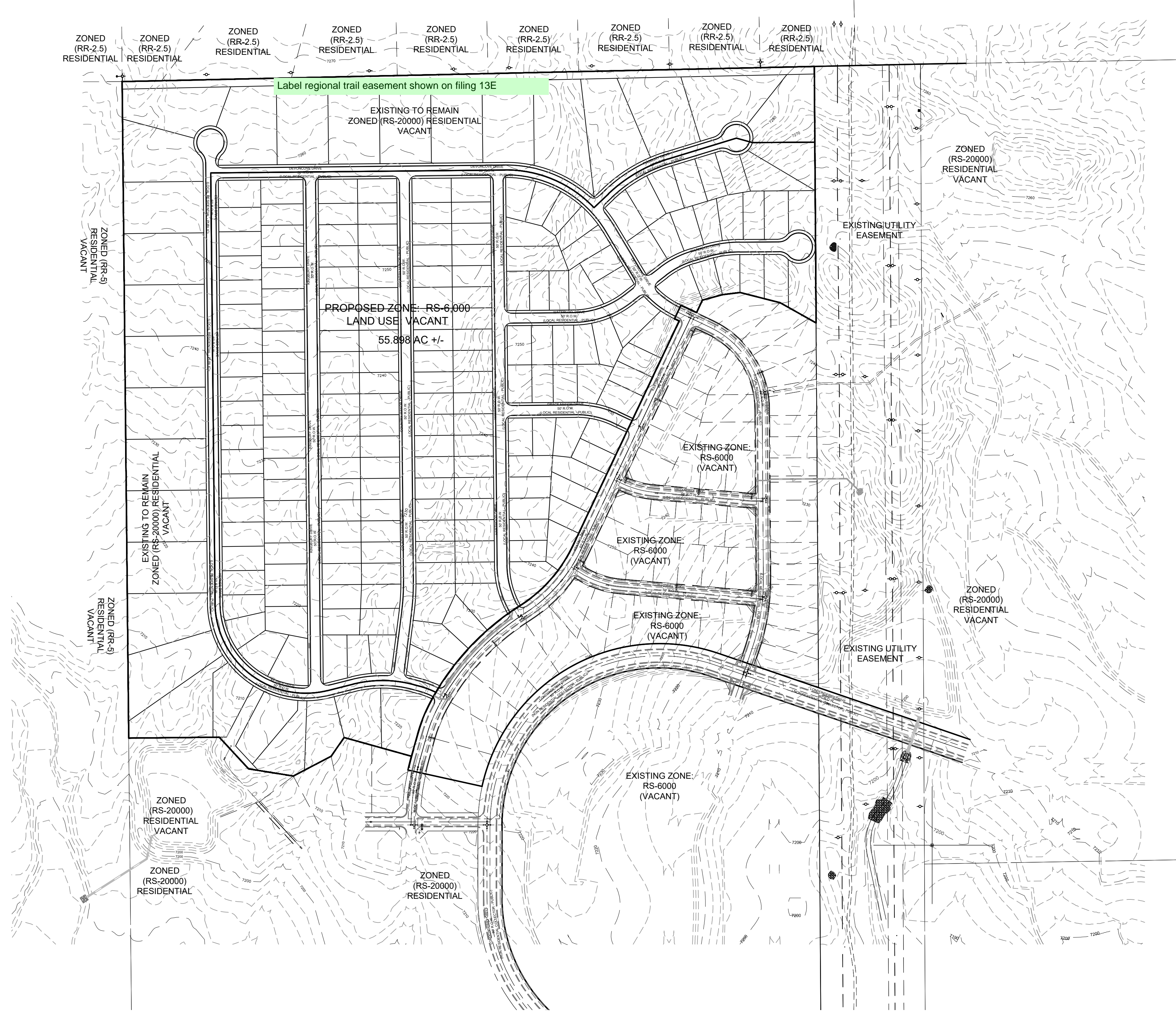


PAINT BRUSH HILLS FILING 14 CONCEPT SITE PLAN

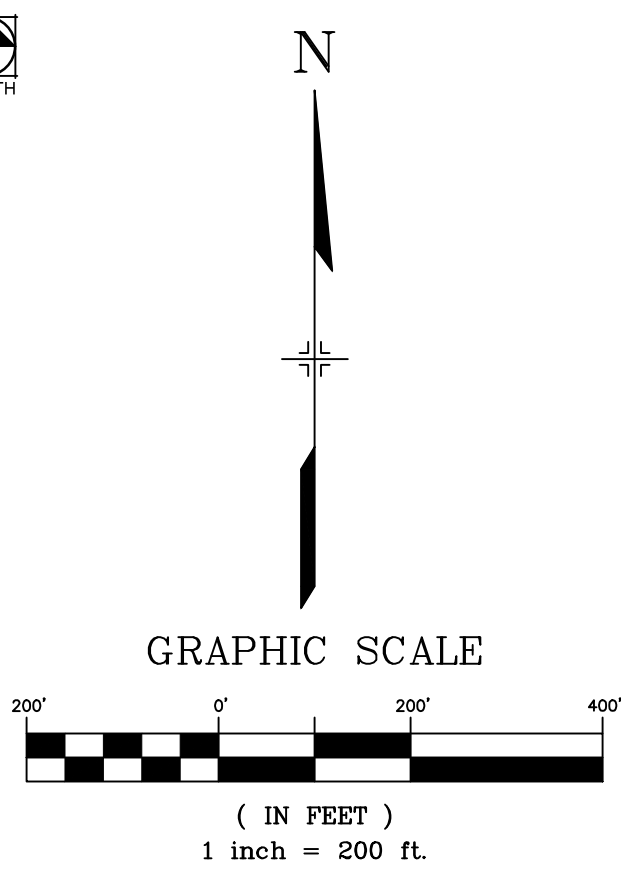
CONSULTANTS:
 PLANNER:

 3435 RESEARCH PARKWAY, SUITE 300
 COLORADO SPRINGS, CO 80920
 PHONE: (719) 575-0100
 FAX: (719) 575-0208

OWNER/DEVELOPER:
AEROPLAZA FOUNTAIN LLC
 212 N WAHSATCH AVE, SUITE 301
 COLORADO SPRINGS, CO 80903
 PH: (719) 635-3200



VICINITY MAP
 N.T.S. NORTH



PROJECT:
PAINT BRUSH HILLS FIL. NO 14

EL PASO COUNTY, CO

REVISION HISTORY:

NO.	DATE	DESCRIPTION	BY

DRAWING INFORMATION:
 PROJECT NO: 20.1129
 DRAWN BY: JRA
 CHECKED BY: JRA
 APPROVED BY: JRA

SHEET TITLE:

CONCEPT SITE PLAN

CP01
 SHEET 1 OF 1

FILE LOCATION: