

TRAILS AT ASPEN RIDGE - FILING NO. 4

EL PASO COUNTY, COLORADO

8" PUBLIC SANITARY MAIN PLANS

DECEMBER 2021

SHEET No. 1



Know what's below.
Call before you dig.

DWG No.	SHEET NAME	SHEET No.
TS01	TITLE SHEET	1
GN01	GENERAL NOTES, LEGEND & ABBREVIATIONS	2
SS01 - SS08	WASTEWATER PLAN & PROFILE	3 - 10
SS09 - SS10	SANITARY SERVICE PLAN	11 - 12

OWNER/DEVELOPER	COLA, LLC 555 MIDDLE CREEK PARKWAY, SUITE 380 COLORADO SPRINGS, CO 80921
CIVIL ENGINEER	MATRIX DESIGN GROUP 2435 RESEARCH PARKWAY, SUITE 300 COLORADO SPRINGS, CO 80920
WATER & SANITARY SEWER	WIDEFIELD WATER AND SANITATION DISTRICT 8495 FONTAINE BOULEVARD COLORADO SPRINGS, CO 80925 ROBERT BANNISTER, (719) 390-7111
ELECTRIC	MOUNTAIN VIEW ELECTRIC ASSOCIATION (719) 495-2283
GAS	COLORADO SPRINGS UTILITIES 1521 HANCOCK EXPRESSWAY COLORADO SPRINGS, CO MARY HOAGLUND (719) 668-4083
STREET	EL PASO COUNTY PUBLIC SERVICES DEPARTMENT (719) 520-6460
DRAINAGE	EL PASO COUNTY PUBLIC SERVICES DEPARTMENT (719) 520-6460
FIRE DEPARTMENT	SECURITY FIRE DEPARTMENT 400 SECURITY BOULEVARD SECURITY, CO 80911 (719) 392-7121

ENGINEER'S STATEMENT:

THIS GRADING AND EROSION CONTROL PLAN WAS PREPARED UNDER MY DIRECTION AND SUPERVISION AND IS CORRECT TO THE BEST OF MY KNOWLEDGE AND BELIEF. SAID PLAN HAS BEEN PREPARED ACCORDING TO THE CRITERIA ESTABLISHED BY THE COUNTY FOR GRADING AND EROSION CONTROL PLANS. I ACCEPT RESPONSIBILITY FOR ANY LIABILITY CAUSED BY ANY NEGLIGENT ACTS, ERRORS OR OMISSIONS ON MY PART IN PREPARING THIS REPORT.

NICOLE SCHANEL, PE #52434 _____ DATE _____

EL PASO COUNTY:

COUNTY PLAN REVIEW IS PROVIDED ONLY FOR GENERAL CONFORMANCE WITH COUNTY DESIGN CRITERIA. THE COUNTY IS NOT RESPONSIBLE FOR THE ACCURACY AND ADEQUACY OF THE DESIGN, DIMENSIONS, AND/ OR ELEVATIONS WHICH SHALL BE CONFIRMED AT THE JOB SITE. THE COUNTY THROUGH THE APPROVAL OF THIS DOCUMENT ASSUMES NO RESPONSIBILITY FOR COMPLETENESS AND/ OR ACCURACY OF THIS DOCUMENT.

FILED IN ACCORDANCE WITH THE REQUIREMENTS OF THE EL PASO COUNTY LAND DEVELOPMENT CODE, DRAINAGE CRITERIA MANUAL, VOLUMES 1 AND 2, AND ENGINEERING CRITERIA MANUAL AS AMENDED.

IN ACCORDANCE WITH ECM SECTION 1.12, THESE CONSTRUCTION DOCUMENTS WILL BE VALID FOR CONSTRUCTION FOR A PERIOD OF 2 YEARS FROM THE DATE SIGNED BY THE EL PASO COUNTY ENGINEER. IF CONSTRUCTION HAS NOT STARTED WITHIN THOSE 2 YEARS, THE PLANS WILL NEED TO BE RESUBMITTED FOR APPROVAL, INCLUDING PAYMENT OF REVIEW FEES AT THE PLANNING AND COMMUNITY DEVELOPMENT DIRECTORS DISCRETION.

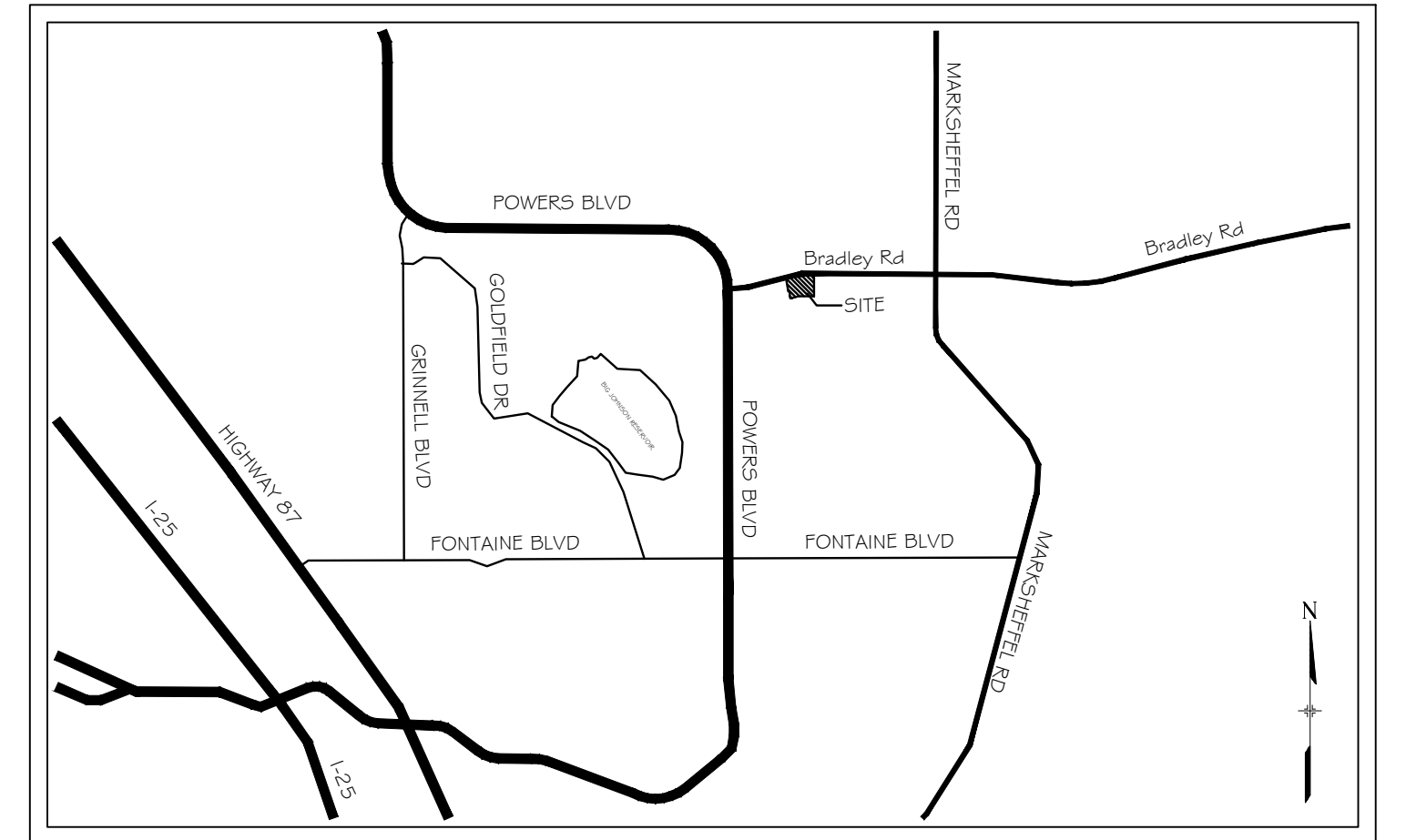
JENNIFER IRVINE, P.E. _____ DATE _____
COUNTY ENGINEER / ECM ADMINISTRATOR



SITE MAP

1" = 200'

THE LOCATIONS OF EXISTING ABOVE GROUND AND UNDERGROUND UTILITIES ARE SHOWN IN AN APPROXIMATE WAY ONLY. THE CONTRACTOR SHALL DETERMINE THE EXACT LOCATION OF ALL EXISTING UTILITIES BEFORE COMMENCING WORK. THE CONTRACTOR SHALL BE FULLY RESPONSIBLE FOR ANY AND ALL DAMAGES WHICH MIGHT BE CAUSED BY HIS FAILURE TO EXACTLY LOCATE AND PRESERVE ANY AND ALL ABOVE GROUND AND UNDERGROUND UTILITIES.



VICINITY MAP

N.T.S.

OWNER'S STATEMENT:

I, THE OWNER/DEVELOPER HAVE READ AND COMPLY WITH THE REQUIREMENTS OF THE GRADING AND EROSION CONTROL PLAN.

TIM BUSCHAR _____ DATE _____
DIRECTOR OF LAND ACQUISITION AND DEVELOPMENT

DISTRICT APPROVALS:

THE WIDEFIELD WATER AND SANITATION DISTRICT RECOGNIZES THE DESIGN ENGINEER AS HAVING RESPONSIBILITY FOR THE DESIGN AND HAS LIMITED ITS SCOPE OF REVIEW ACCORDINGLY.

WIDEFIELD WATER AND SANITATION DISTRICT
WATER DESIGN APPROVAL

DATE: _____ BY: _____

PROJECT NUMBER: _____

IN CASE OF ERRORS OR OMISSIONS WITH THE WATER DESIGN AS SHOWN ON THIS DOCUMENT THE STANDARDS AS DEFINED IN THE "RULES AND REGULATIONS FOR INSTALLATION OF WATER MAINS AND SERVICES" SHALL RULE.

APPROVAL EXPIRES 180 DAYS FROM DESIGN APPROVAL

WATER AND SANITARY SEWER APPROVAL

ANY CHANGES OR ALTERATIONS AFFECTING THE GRADE, ALIGNMENT, ELEVATION, AND/OR DEPTH OF COVER OF ANY WATER OR SEWER MAINS OR OTHER APPURTENANCE SHOWN ON THIS DRAWING SHALL BE THE RESPONSIBILITY OF THE OWNER/DEVELOPER. THE OWNER/DEVELOPER SHALL BE RESPONSIBLE FOR ALL OPERATION DAMAGES AND DEFECTS IN INSTALLATION AND MATERIAL FOR MAINS AND SERVICES FROM THE DATE OF APPROVAL UNTIL FINAL ACCEPTANCE IS ISSUED.

SIGNED _____ DATE _____
OWNER/DEVELOPER

PRINT NAME _____

DBA _____

ADDRESS _____

REFERENCE DRAWINGS	No.	DATE	DESCRIPTION	BY
COMPUTER FILE MANAGEMENT				
FILE NAME: S:\21.886.038 (Trails F6)\100 Plan Sets\Construction Plans\Utility Plans\Sanitary Plan\TS01.dwg				
CTB FILE: Matrix(black).ctb				
PLOT DATE: December 23, 2021 11:40:46 AM				
THIS DRAWING IS CURRENT AS OF PLOT DATE AND MAY BE SUBJECT TO CHANGE.				
SHEET KEY				
BENCHMARK COLORADO SPRINGS UTILITIES (FIMS) MONUMENT F206 A BERNTSEN TOP SECURITY MONUMENT SYSTEM WITH A 3.5-INCH DIAMETER ALUMINUM CAP IN A ROAD BOX, LOCATED ON THE NORTHWEST CORNER OF FONTAINE BOULEVARD AND POWERS BOULEVARD. ELEVATION - 5897.89' U.S. SURVEY FT				
BASIS OF BEARING BEARINGS ARE BASED ON THE NORTH LINE OF THE NORTHWEST QUARTER OF SECTION 9, TOWNSHIP 15 SOUTH, RANGE 68 WEST OF THE 6TH P.M. SAID LINE BEARS S89°51'23"E FROM THE NORTHWEST CORNER OF SAID SECTION 9 (2 1/2' AULM. CAP PLS 17664) TO THE N 1/4 CORNER OF SAID SECTION 9 (3 1/4' AULM. CAP PLS 10377)				
PREPARED BY: Matrix				
SEAL COLORADO LICENSED PROFESSIONAL ENGINEER 62434 FOR AND ON BEHALF OF MATRIX DESIGN GROUP, INC. PROJECT No. 21.886.038				
TRAILS AT ASPEN RIDGE				
FILING NO. 4 8" SANITARY SEWER PLANS				
TITLE SHEET				
DESIGNED BY:	BAS	SCALE	DATE ISSUED:	DECEMBER 2021
DRAWN BY:	JLW	HORIZ	1 OF 12	TS01
CHECKED BY:	NMS	VERT.		



EL PASO COUNTY STANDARD CONSTRUCTION NOTES.

- ALL DRAINAGE AND ROADWAY CONSTRUCTION SHALL MEET THE STANDARDS AND SPECIFICATIONS OF THE CITY OF COLORADO SPRINGS/EL PASO COUNTY DRAINAGE CRITERIA MANUAL, VOLUMES 1 AND 2, AND THE EL PASO COUNTY ENGINEERING CRITERIA MANUAL.
2. CONTRACTOR SHALL BE RESPONSIBLE FOR THE NOTIFICATION AND FIELD NOTIFICATION OF ALL EXISTING UTILITIES, WHETHER SHOWN ON THE PLANS OR NOT, BEFORE BEGINNING CONSTRUCTION. LOCATION OF EXISTING UTILITIES SHALL BE VERIFIED BY THE CONTRACTOR PRIOR TO CONSTRUCTION. CALL 811 TO CONTACT THE UTILITY NOTIFICATION CENTER OF COLORADO (UNCC).
3. CONTRACTOR SHALL KEEP A COPY OF THESE APPROVED PLANS, THE GRADING AND EROSION CONTROL PLAN, THE STORMWATER MANAGEMENT PLAN (SWMP), THE SOILS AND GEOTECHNICAL REPORT, AND THE APPROPRIATE DESIGN AND CONSTRUCTION STANDARDS AND SPECIFICATIONS AT THE JOB SITE AT ALL TIMES, INCLUDING THE FOLLOWING:
 - a. EL PASO COUNTY ENGINEERING CRITERIA MANUAL (ECM)
 - b. CITY OF COLORADO SPRINGS/EL PASO COUNTY DRAINAGE CRITERIA MANUAL, VOLUMES 1 AND 2
 - c. COLORADO DEPARTMENT OF TRANSPORTATION (CDOT) STANDARD SPECIFICATIONS FOR ROAD AND BRIDGE CONSTRUCTION
 - d. CDOT M & S STANDARDS
4. NOTWITHSTANDING ANYTHING DEPICTED IN THESE PLANS IN WORDS OR GRAPHIC REPRESENTATION, ALL DESIGN AND CONSTRUCTION RELATED TO ROADS, STORM DRAINAGE AND EROSION CONTROL SHALL CONFORM TO THE STANDARDS AND REQUIREMENTS OF THE MOST RECENT VERSION OF THE RELEVANT ADOPTED EL PASO COUNTY STANDARDS, INCLUDING THE LAND DEVELOPMENT CODE, THE ENGINEERING CRITERIA MANUAL, THE DRAINAGE CRITERIA MANUAL, AND THE DRAINAGE CRITERIA MANUAL VOLUME 2. ANY DEVIATIONS FROM REGULATIONS AND STANDARDS MUST BE REQUESTED, AND APPROVED, IN WRITING. ANY MODIFICATIONS NECESSARY TO MEET CRITERIA AFTER-THE-FACT WILL BE ENTIRELY THE DEVELOPER'S RESPONSIBILITY TO RECTIFY.
5. IT IS THE DESIGN ENGINEER'S RESPONSIBILITY TO ACCURATELY SHOW EXISTING CONDITIONS, BOTH ONSITE AND OFFSITE, ON THE CONSTRUCTION PLANS. ANY MODIFICATIONS NECESSARY DUE TO CONFLICTS, OMISSIONS, OR CHANGED CONDITIONS WILL BE ENTIRELY THE DEVELOPER'S RESPONSIBILITY TO RECTIFY.
6. CONTRACTOR SHALL SCHEDULE A PRE-CONSTRUCTION MEETING WITH EL PASO COUNTY PLANNING AND COMMUNITY DEVELOPMENT (PCD) - INSPECTIONS, PRIOR TO STARTING CONSTRUCTION.
7. IT IS THE CONTRACTOR'S RESPONSIBILITY TO UNDERSTAND THE REQUIREMENTS OF ALL JURISDICTIONAL AGENCIES AND TO OBTAIN ALL REQUIRED PERMITS, INCLUDING BUT NOT LIMITED TO EL PASO COUNTY EROSION AND STORMWATER QUALITY CONTROL PERMIT (ESQCP), REGIONAL BUILDING FLOODPLAIN DEVELOPMENT PERMIT, U.S. ARMY CORPS OF ENGINEERS-ISSUED 401 AND/OR 404 PERMITS, AND COUNTY AND STATE FUGITIVE DUST PERMITS.
8. CONTRACTOR SHALL NOT DEVIATE FROM THE PLANS WITHOUT FIRST OBTAINING WRITTEN APPROVAL FROM THE DESIGN ENGINEER AND PCD. CONTRACTOR SHALL NOTIFY THE DESIGN ENGINEER IMMEDIATELY UPON DISCOVERY OF ANY ERRORS OR INCONSISTENCIES.
9. ALL STORM DRAIN PIPE SHALL BE CLASS III RCP UNLESS OTHERWISE NOTED AND APPROVED BY PCD.
10. CONTRACTOR SHALL COORDINATE GEOTECHNICAL TESTING PER ECM STANDARDS. PAVEMENT DESIGN SHALL BE APPROVED BY EL PASO COUNTY PCD PRIOR TO PLACEMENT OF CURB AND GUTTER AND PAVEMENT.
11. ALL CONSTRUCTION TRAFFIC MUST ENTER/EXIT THE SITE AT APPROVED CONSTRUCTION ACCESS POINTS.
12. SIGHT VISIBILITY TRIANGLES AS IDENTIFIED IN THE PLANS SHALL BE PROVIDED AT ALL INTERSECTIONS. OBSTRUCTIONS GREATER THAN 18 INCHES ABOVE FLOWLINE ARE NOT ALLOWED WITHIN SIGHT TRIANGLES.
13. SIGNING AND STRIPING SHALL COMPLY WITH EL PASO COUNTY DOT AND MUTCD CRITERIA. [IF APPLICABLE, ADDITIONAL SIGNING AND STRIPING NOTES WILL BE PROVIDED.]
14. CONTRACTOR SHALL OBTAIN ANY PERMITS REQUIRED BY EL PASO COUNTY DOT, INCLUDING WORK WITHIN THE RIGHT-OF-WAY AND SPECIAL TRANSPORT PERMITS.
15. THE LIMITS OF CONSTRUCTION SHALL REMAIN WITHIN THE PROPERTY LINE UNLESS OTHERWISE NOTED. THE OWNER/DEVELOPER SHALL OBTAIN WRITTEN PERMISSION AND EASEMENTS, WHERE REQUIRED, FROM ADJOINING PROPERTY OWNER(S) PRIOR TO ANY OFF-SITE DISTURBANCE, GRADING, OR CONSTRUCTION.

ASSY	ASSEMBLY
BOPM	BOTTOM OF PIPE
BOV	BLOWOFF ASSEMBLY AND VALVE
CP LG.	COUPLING
(IN)	(INSULATING)
(RED.)	(REDUCING)
(STR.)	(STRAIGHT)
CRA	CONCRETE REVERSE ANCHOR
CTRB	CONCRETE THRUST REACTION BLOCK
DEFL	DEFLECT
DITL	DUSTLE IRON PIPE
EL	ELEVATION
EX	EXISTING
FLG	FLANGE
FH	FIRE HYDRANT
GPM	GALLONS PER MINUTE
GRD BRK	GRD. GRADE BREAK
HYD ASSY	INCLUDES FIRE HYDRANT, LATERAL, VALVE TIE RODS, AND REVERSE ANCHOR.
INV	INVERT
LT	LEFT OF CENTER LINE
MIN	MINIMUM
MJ	MECHANICAL JOINT
N.S.E.W.	NORTH,SOUTH,EAST,WEST
PL	PROPERTY LINE
PSI	POUNDS PER SQUARE INCH
PVC	POLYVINYL CHLORIDE PIPE
RCP	REINFORCED CONCRETE PIPE
RED	REDUCER
RSNTS	MJ RESTRAINT (i.e. MEGALUG)
RT	RIGHT OF CENTER LINE
SJ	SLIP JOINT
SS	SANITARY SEWER
STA	STATION
STS	STORM SEWER
TYP	TOP OF PIPE
WL	TYPICAL
WPL	WATER LINE

VALVE (PROPOSED)
 VALVE (EXISTING)
 BLOWOFF (PROPOSED)
 BLOWOFF (EXISTING)
 PLUG (PROPOSED)
 PLUG (EXISTING)
 EXISTING FIRE HYDRANT
 PROPOSED FIRE HYDRANT
 PROPERTY LINE
 CURB LINE
 EXISTING GAS MAIN
 EXISTING WATER
 PROPOSED WATER
 EXISTING STORM DRAIN
 PROPOSED STORM DRAIN
 EXISTING SAN. SEWER
 PROPOSED SAN. SEWER
 EXISTING MANHOLE
 PROPOSED MANHOLE
 MATCHLINE



SCALE: 1" = 200'

UTILITY CROSSING DETAILS				
CROSSING #	N & E	TOP OF PIPE	BTM OF PIPE	VERT. SEP.
1	N 7719.33 E 13971.45	8" PVC SEWER 5868.79	18" RCP STORM 5871.66	2.87'
2	N 7719.50 E 13999.37	8" PVC SEWER 5868.51	30" RCP STORM 5870.32	1.81'
3	N 7729.56 E 14010.51	8" PVC SEWER 5868.48	8" PVC WATER 5875.04	6.56"
4	N 7955.64 E 14009.11	8" PVC SEWER 5870.25	24" RCP STORM 5880.25	10.00'
5	N 7966.50 E 13968.99	8" PVC SEWER 5871.04	24" RCP STORM 5881.02	9.98'
6	N 7966.69 E 13998.38	8" PVC SEWER 5870.75	30" RCP STORM 5881.03	10.28'
7	N 7976.74 E 14008.98	8" PVC SEWER 5870.69	8" PVC WATER 5885.18	14.49'
8	N 8225.22 E 14007.48	8" PVC SEWER 5872.23	8" PVC WATER 5891.28	19.05'
9	N 8214.67 E 13916.16	8" PVC SEWER 5873.93	24" RCP STORM 5891.37	17.44'
10	N 8210.47 E 13608.46	8" PVC SEWER 5884.38	30" RCP STORM 5893.69	9.31'
11	N 8223.77 E 13767.48	8" PVC SEWER 5877.12	8" PVC WATER 5891.88	14.76'
12	N 8204.91 E 13546.71	8" PVC SEWER 5887.65	8" PVC WATER 5894.12	6.47'
13	N 8156.91 E 13375.46	8" PVC SEWER 5889.40	8" PVC WATER 5895.90	6.50'
14	N 8330.13 E 13326.92	8" PVC SEWER 5893.97	12" PVC WATER 5900.08	6.11'
15	N 8641.09 E 13287.58	8" PVC SEWER 5898.76	8" PVC WATER 5906.56	7.80'
16	N 8704.16 E 13512.68	8" PVC SEWER 5891.60	8" PVC WATER 5898.29	6.69'
17	N 8758.76 E 13765.98	8" PVC SEWER 5880.34	8" PVC WATER 5888.74	8.40'

APPROVAL EXPIRES 180 DAYS FROM DESIGN APPROVAL

SHEET KEY

N

The map shows a large rectangular area divided into several smaller rectangular sections. The project area is located in the top right corner of the sheet, indicated by a dashed line and a small square symbol.

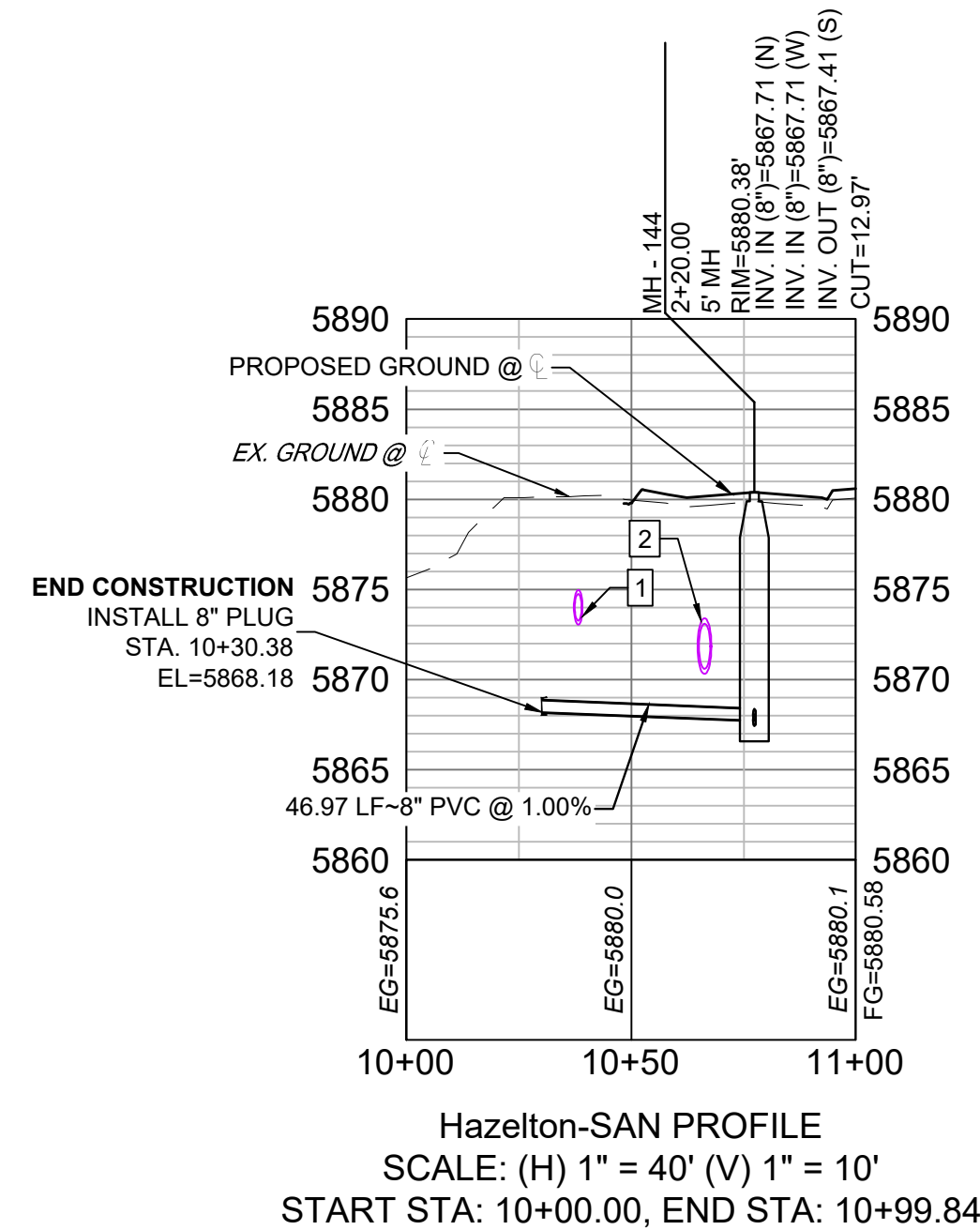
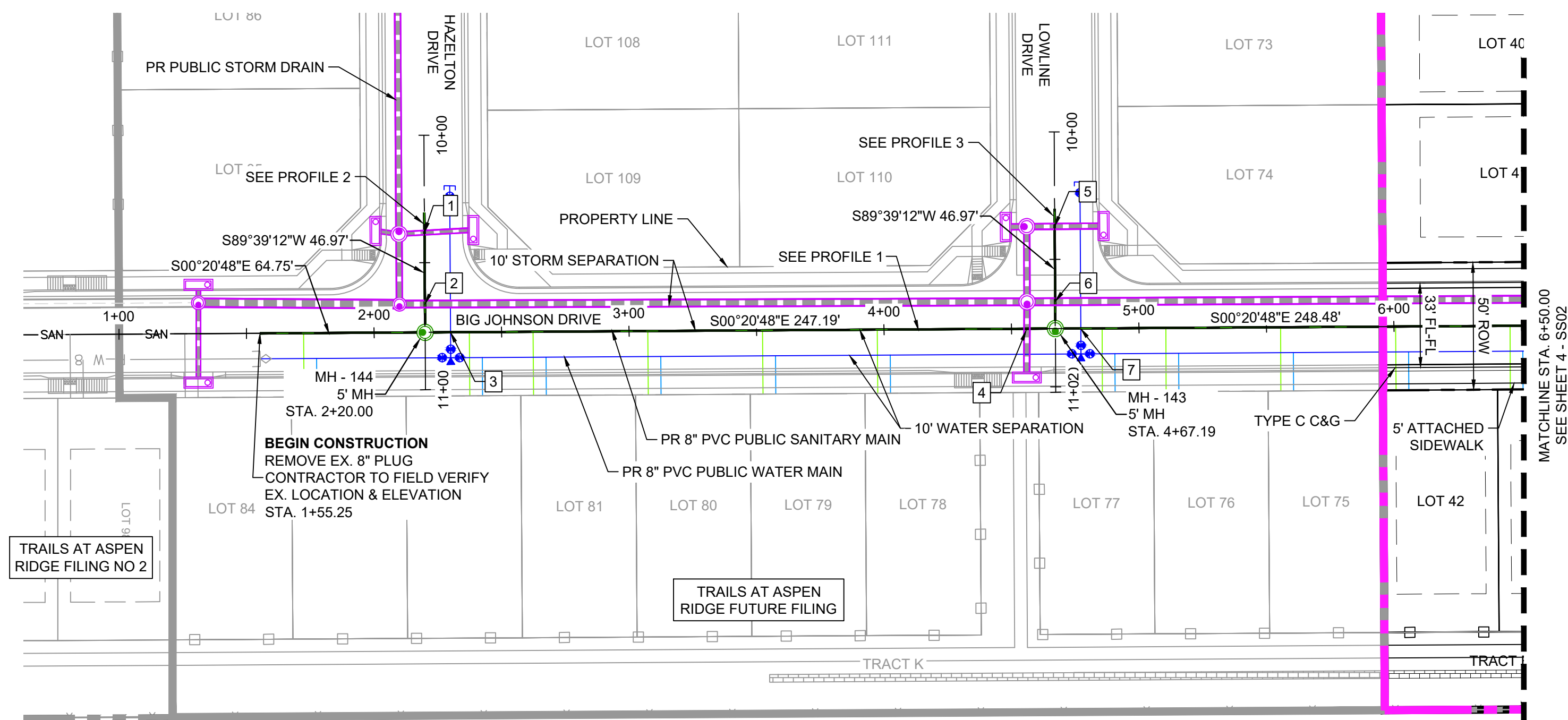
BASIS OF BEARING
BEARINGS ARE BASED ON THE NORTH LINE OF THE NORTHWEST QUARTER OF SECTION 9, TOWNSHIP 15 SOUTH, RANGE 65 WEST OF THE 6TH P.M. SAID LINE BEARS S89°51'23"E FROM THE NORTHWEST CORNER OF SAID SECTION 9 (2 1/2" AULM. CAP PLS 17664) TO THE N 1/4 CORNER OF SAID SECTION 9 (3 1/4" AULM. CAP PLS 10377)



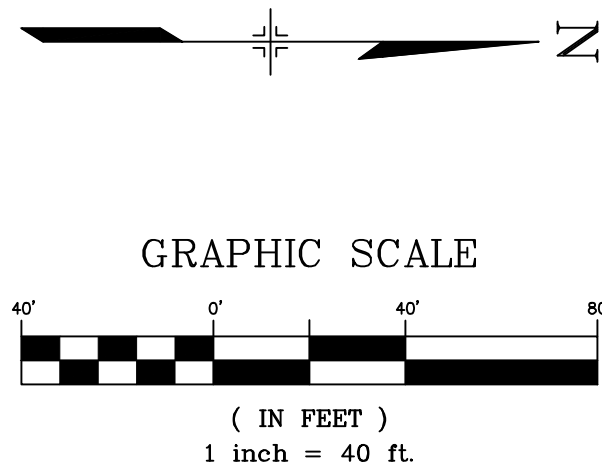
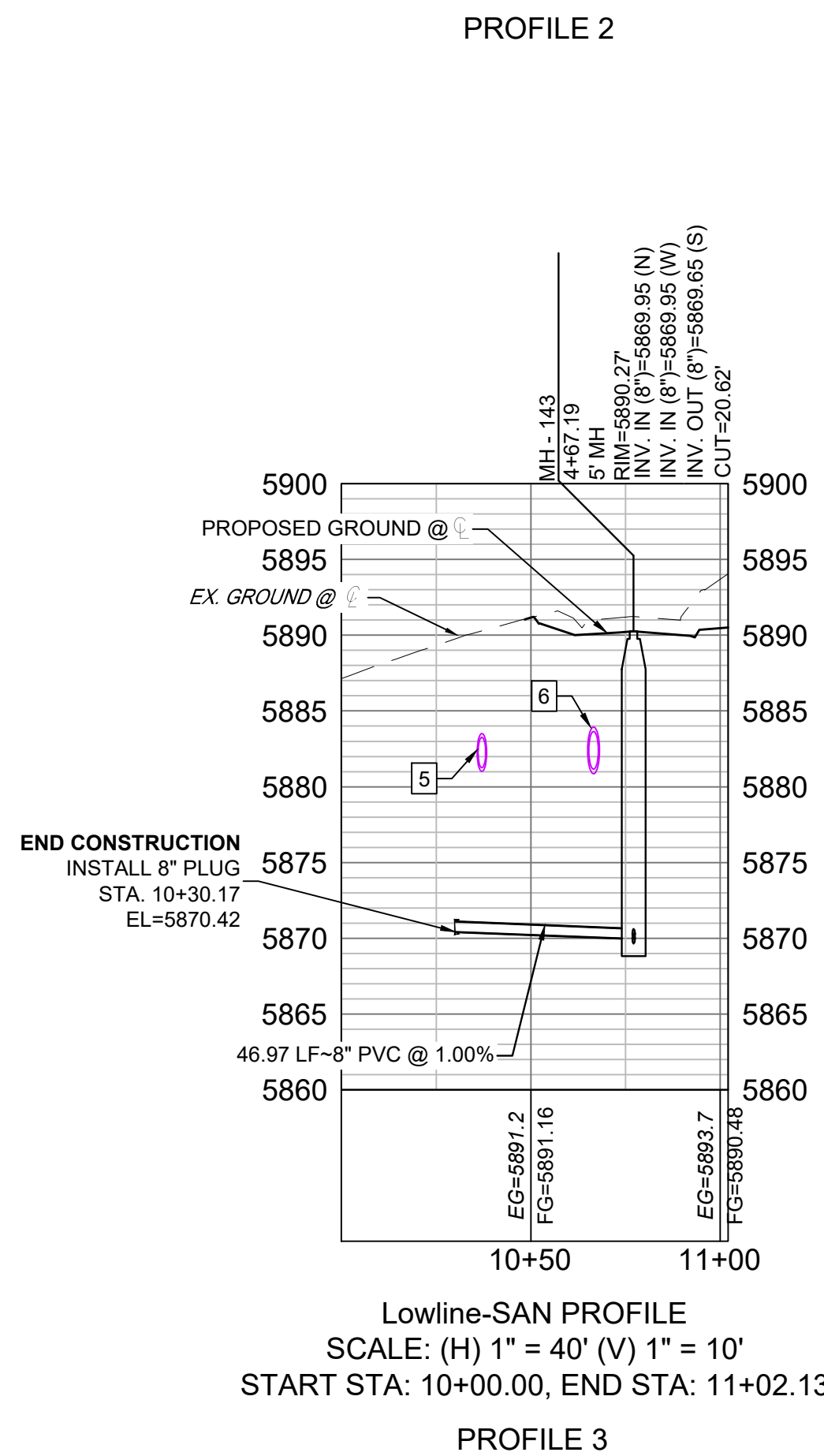
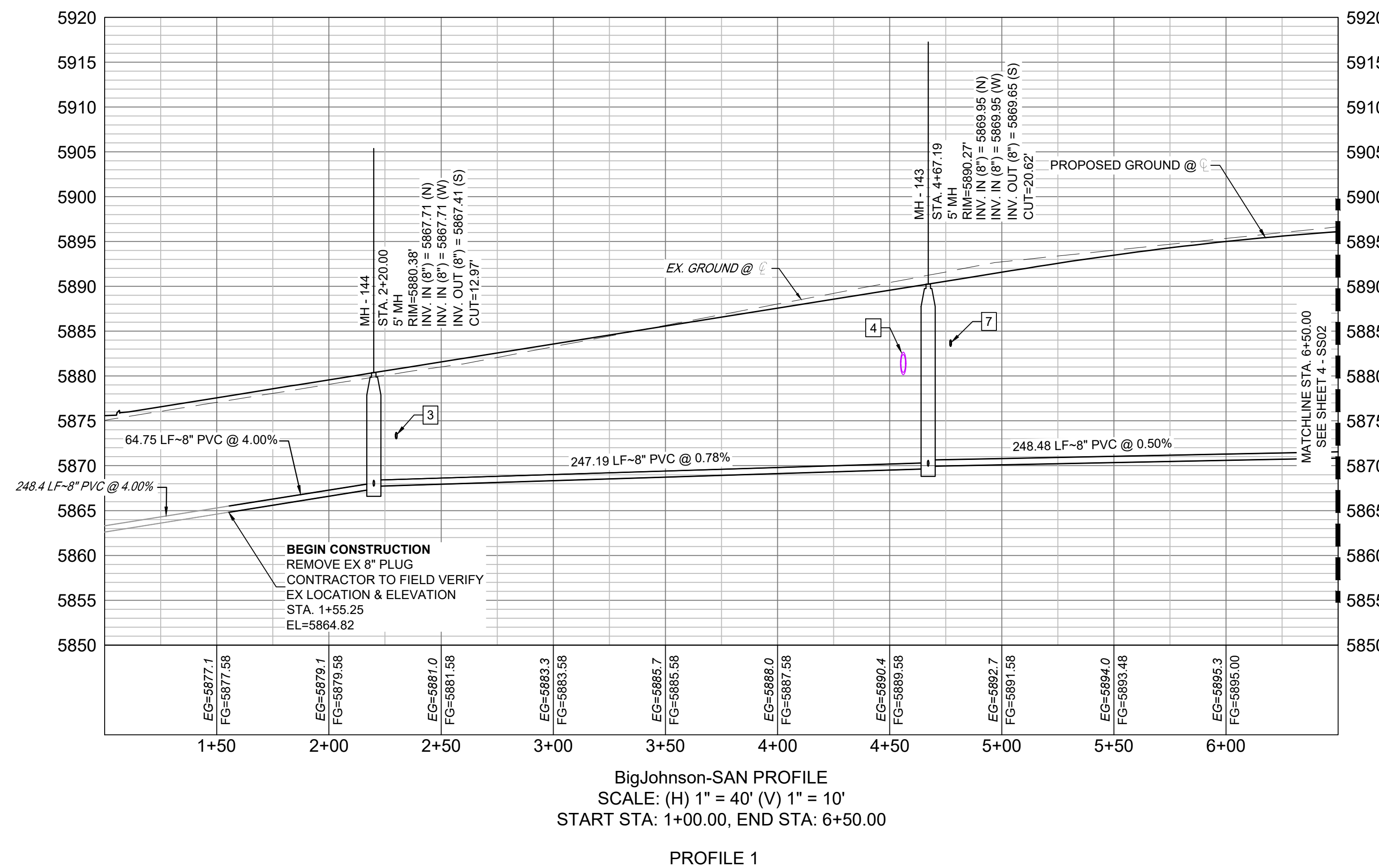
DESIGNED BY:	BAS	SCALE	DATE ISSUED:	DECEMBER 2021	DRAWING No. GN01
DRAWN BY:	JLW	HORIZ. N/A			
CHECKED BY:	NMS	VERT. N/A	SHEET	2 OF 12	



Know what's below.
Call before you dig.



UTILITY CROSSING DETAILS				
CROSSING #	N & E	TOP OF PIPE	BTM OF PIPE	VERT. SEP.
1	N 7719.33 E 13971.45	8" PVC SEWER 5868.79	18" RCP STORM 5873.06	4.27'
2	N 7719.50 E 13999.37	8" PVC SEWER 5868.51	30" RCP STORM 5870.32	1.81'
3	N 7729.56 E 14010.51	8" PVC SEWER 5868.48	8" PVC WATER 5873.00	4.52'
4	N 7955.64 E 14009.11	8" PVC SEWER 5870.25	24" RCP STORM 5880.25	10.00'
5	N 7966.50 E 13968.99	8" PVC SEWER 5871.04	24" RCP STORM 5881.02	9.98'
6	N 7966.69 E 13998.38	8" PVC SEWER 5870.75	30" RCP STORM 5880.86	10.11'
7	N 7976.74 E 14008.98	8" PVC SEWER 5870.69	8" PVC WATER 5883.32	12.63'



THE LOCATIONS OF EXISTING ABOVE GROUND AND UNDERGROUND UTILITIES ARE SHOWN IN AN APPROXIMATE WAY ONLY. THE CONTRACTOR SHALL DETERMINE THE EXACT LOCATION OF ALL EXISTING UTILITIES BEFORE COMMENCING WORK. THE CONTRACTOR SHALL BE FULLY RESPONSIBLE FOR ANY AND ALL DAMAGES WHICH MIGHT BE CAUSED BY HIS FAILURE TO EXACTLY LOCATE AND PRESERVE ANY AND ALL ABOVE GROUND AND UNDERGROUND UTILITIES.

THE WIDEFIELD WATER AND SANITATION DISTRICT RECOGNIZES THE DESIGN ENGINEER AS HAVING RESPONSIBILITY FOR THE DESIGN AND HAS LIMITED ITS SCOPE OF REVIEW ACCORDINGLY.

WIDEFIELD WATER AND SANITATION DISTRICT WASTEWATER DESIGN APPROVAL

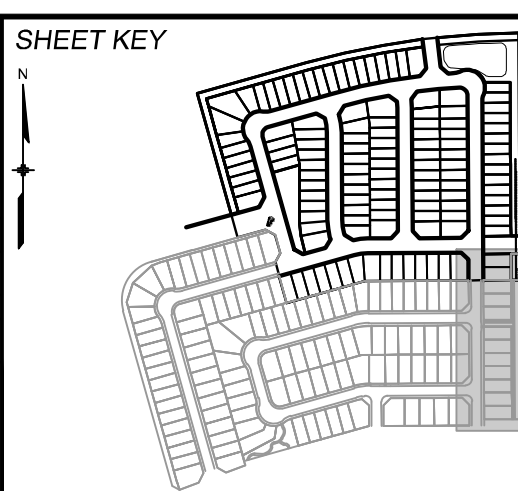
DATE: _____ BY: _____

PROJECT NUMBER: _____

IN CASE OF ERRORS OR OMISSIONS WITH THE WATER DESIGN AS SHOWN ON THIS DOCUMENT THE STANDARDS AS DEFINED IN THE "RULES AND REGULATIONS FOR INSTALLATION OF WASTEWATER MAINS AND SERVICES" SHALL RULE.

APPROVAL EXPIRES 180 DAYS FROM DESIGN APPROVAL

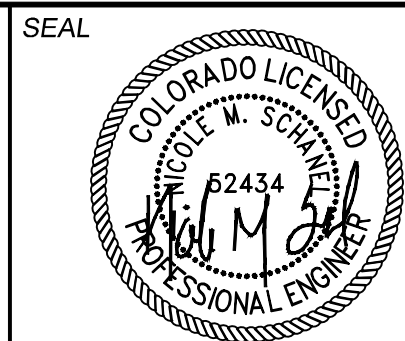
REFERENCE DRAWINGS			
No.	DATE	DESCRIPTION	BY
COMPUTER FILE MANAGEMENT			
FILE NAME:			
CTB FILE:			
PLOT DATE:			
THIS DRAWING IS CURRENT AS OF PLOT DATE AND MAY BE SUBJECT TO CHANGE.			



BENCHMARK
COLORADO SPRINGS UTILITIES (FIMS) MONUMENT F206
A BERNTSEN TOP SECURITY MONUMENT SYSTEM WITH A 3.5-INCH DIAMETER ALUMINUM CAP IN A ROAD BOX, LOCATED ON THE NORTHWEST CORNER OF FONTAINE BOULEVARD AND POWERS BOULEVARD.
ELEVATION - 5897.89' U.S. SURVEY FT

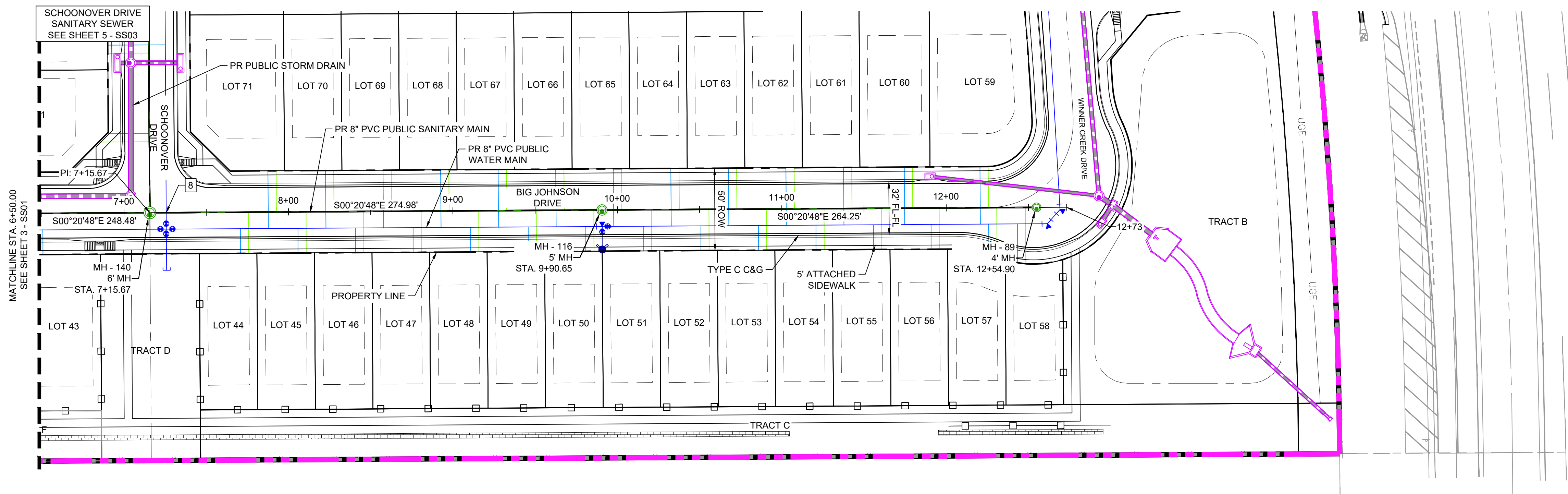
BASIS OF BEARING
BEARINGS ARE BASED ON THE NORTH LINE OF THE NORTHWEST QUARTER OF SECTION 9, TOWNSHIP 15 SOUTH, RANGE 68 WEST OF THE 6TH P.M. SAID LINE BEARS S89°51'23"E FROM THE NORTHWEST CORNER OF SAID SECTION 9 (2 1/2' AULM. CAP PLS 17664) TO THE N 1/4 CORNER OF SAID SECTION 9 (3 1/4' AULM. CAP PLS 10377)

PREPARED BY:

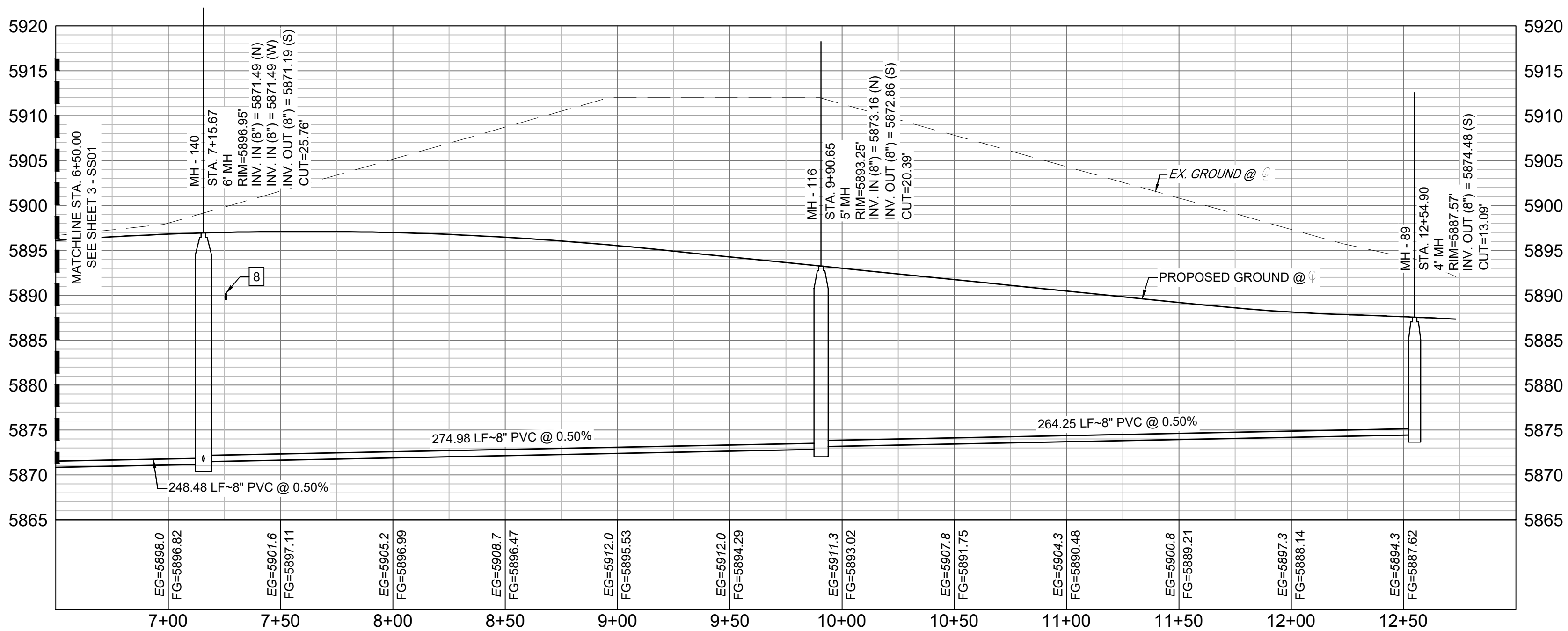


FOR AND ON BEHALF OF
MATRIX DESIGN GROUP, INC.
PROJECT No.

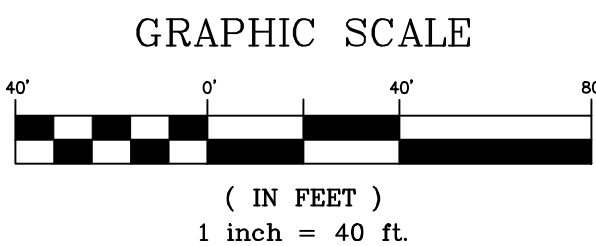
DESIGNED BY:	SCALE	DATE ISSUED:	DRAWING No.
CHECKED BY:	HORIZ.	SHEET	OF
	VERT.		

Know what's below.
Call before you dig.

UTILITY CROSSING DETAILS				
CROSSING #	N & E	TOP OF PIPE	BTM OF PIPE	VERT. SEP.
8	N 8225.22 E 14007.48	8" PVC SEWER 5872.23	8" PVC WATER 5889.66	17.43'



BigJohnson-SAN PROFILE
SCALE: (H) 1" = 40' (V) 1" = 10'
START STA: 6+50.00, END STA: 13+00.00



THE LOCATIONS OF EXISTING ABOVE GROUND AND UNDERGROUND UTILITIES ARE SHOWN IN AN APPROXIMATE WAY ONLY. THE CONTRACTOR SHALL DETERMINE THE EXACT LOCATION OF ALL EXISTING UTILITIES BEFORE COMMENCING WORK. THE CONTRACTOR SHALL BE FULLY RESPONSIBLE FOR ANY AND ALL DAMAGES WHICH MIGHT BE CAUSED BY HIS FAILURE TO EXACTLY LOCATE AND PRESERVE ANY AND ALL ABOVE GROUND AND UNDERGROUND UTILITIES.

THE WIDEFIELD WATER AND SANITATION DISTRICT RECOGNIZES THE DESIGN ENGINEER AS HAVING RESPONSIBILITY FOR THE DESIGN AND HAS LIMITED ITS SCOPE OF REVIEW ACCORDINGLY.

**WIDEFIELD WATER AND SANITATION DISTRICT
WASTEWATER DESIGN APPROVAL**

DATE: _____ BY: _____

PROJECT NUMBER: _____

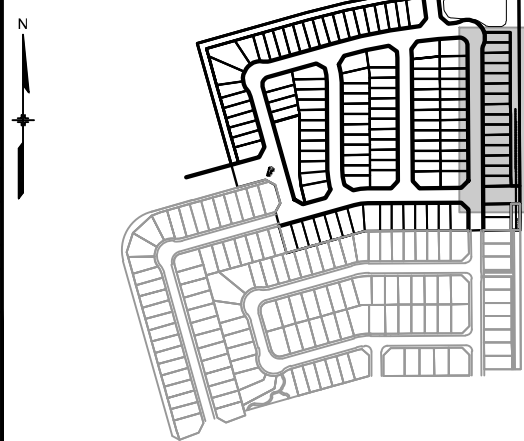
IN CASE OF ERRORS OR OMISSIONS WITH THE WATER DESIGN AS SHOWN ON THIS DOCUMENT THE STANDARDS AS DEFINED IN THE "RULES AND REGULATIONS FOR INSTALLATION OF WASTEWATER MAINS AND SERVICES" SHALL RULE.

APPROVAL EXPIRES 180 DAYS FROM DESIGN APPROVAL

REFERENCE
DRAWINGS

No.	DATE	DESCRIPTION	BY
REVISIONS			
COMPUTER FILE MANAGEMENT			
FILE NAME:			
CTB FILE:			
PLOT DATE:			
THIS DRAWING IS CURRENT AS OF PLOT DATE AND MAY BE SUBJECT TO CHANGE.			

SHEET KEY



BENCHMARK

COLORADO SPRINGS UTILITIES (FIMS) MONUMENT F206
A BERNTSEN TOP SECURITY MONUMENT SYSTEM WITH A 3.5-INCH DIAMETER ALUMINUM CAP IN A ROAD BOX, LOCATED ON THE NORTHWEST CORNER OF FONTAINE BOULEVARD AND POWERS BOULEVARD.
ELEVATION - 5897.89' U.S. SURVEY FT

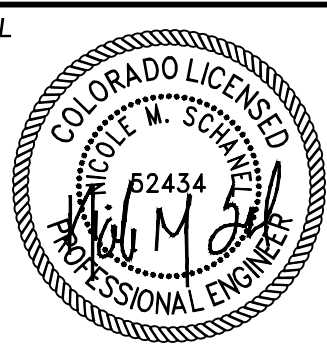
BASIS OF BEARING

BEARINGS ARE BASED ON THE NORTH LINE OF THE NORTHWEST QUARTER OF SECTION 9, TOWNSHIP 15 SOUTH, RANGE 68 WEST OF THE 6TH P.M. SAID LINE BEARS S89°51'23"E FROM THE NORTHWEST CORNER OF SAID SECTION 9 (2 1/2" AULM. CAP PLS 17664) TO THE N 1/4 CORNER OF SAID SECTION 9 (3 1/4" AULM. CAP PLS 10377)

PREPARED BY:

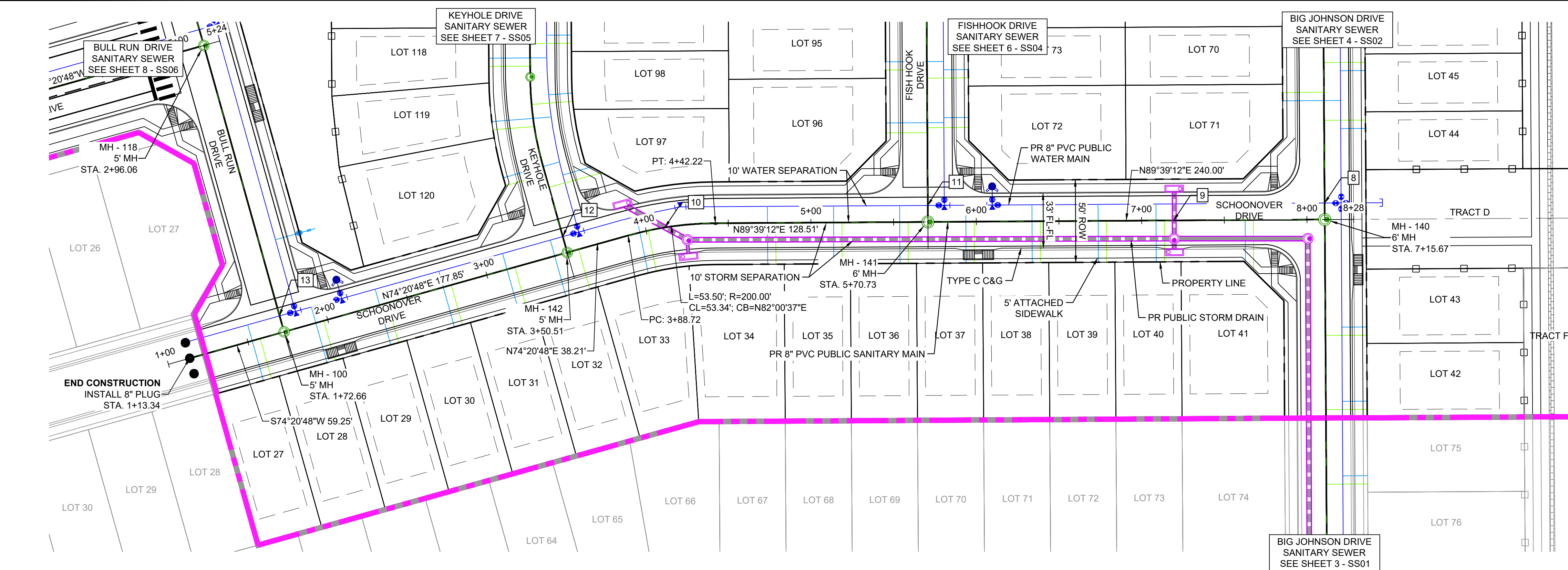


SEAL



FOR AND ON BEHALF OF
MATRIX DESIGN GROUP, INC.
PROJECT No.

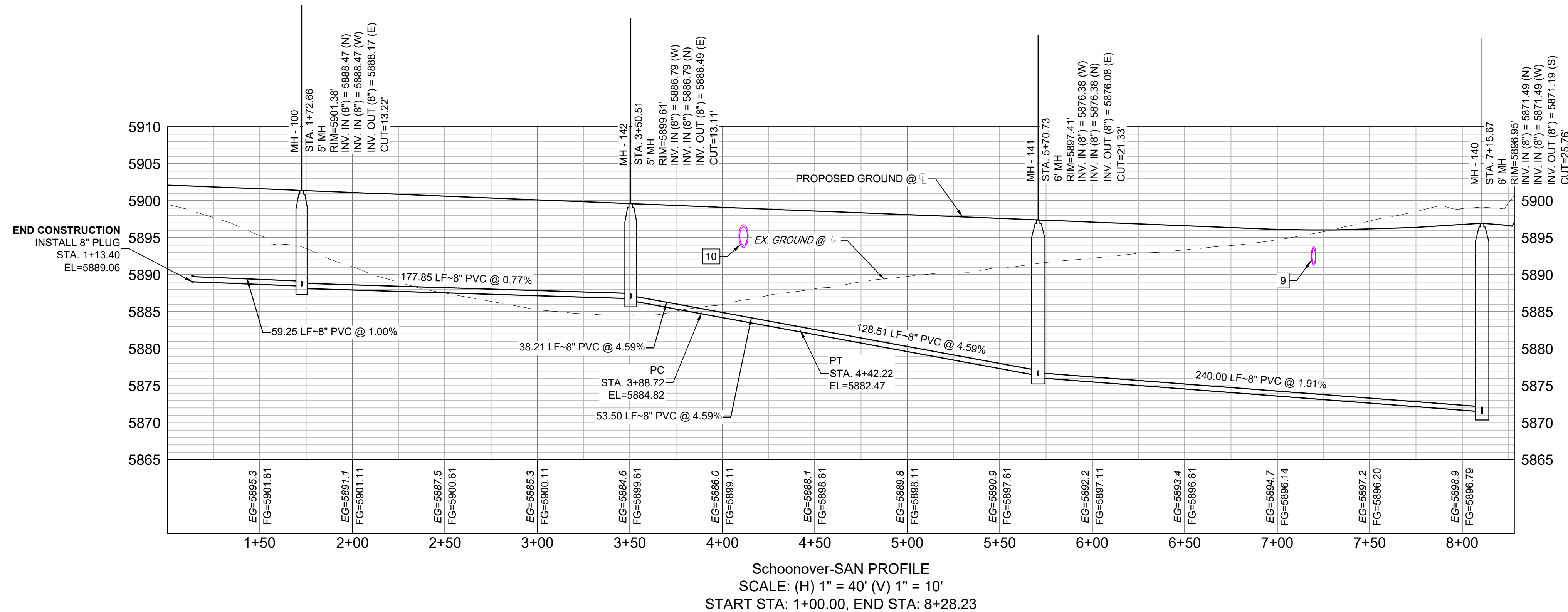
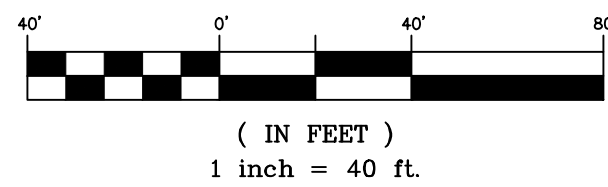
DESIGNED BY:	SCALE	DATE ISSUED:	DRAWING No.
CHECKED BY:	HORIZ. VERT.	SHEET OF	

Know what's below.
Call before you dig.

UTILITY CROSSING DETAILS				
CROSSING #	N & E	TOP OF PIPE	BTM OF PIPE	VERT. SEP.
9	N 8214.67 E 13916.16	8" PVC SEWER 5873.93	24" RCP STORM 5891.37	17.44'
10	N 8210.47 E 13608.46	8" PVC SEWER 5884.38	30" RCP STORM 5893.69	9.31'

NOTE:
CURVILINEAR PIPE TO BE ACHIEVED USING
3" BEND AT EVERY OTHER JOINT.

GRAPHIC SCALE



THE LOCATIONS OF EXISTING ABOVE GROUND AND UNDERGROUND UTILITIES ARE SHOWN IN AN APPROXIMATE WAY ONLY. THE CONTRACTOR SHALL DETERMINE THE EXACT LOCATION OF ALL EXISTING UTILITIES BEFORE COMMENCING WORK. THE CONTRACTOR SHALL BE FULLY RESPONSIBLE FOR ANY AND ALL DAMAGES WHICH MIGHT BE CAUSED BY HIS FAILURE TO EXACTLY LOCATE AND PRESERVE ANY AND ALL ABOVE GROUND AND UNDERGROUND UTILITIES.

THE WIDEFIELD WATER AND SANITATION DISTRICT RECOGNIZES THE DESIGN ENGINEER AS HAVING RESPONSIBILITY FOR THE DESIGN AND HAS LIMITED ITS SCOPE OF REVIEW ACCORDINGLY.

**WIDEFIELD WATER AND SANITATION DISTRICT
WASTEWATER DESIGN APPROVAL**

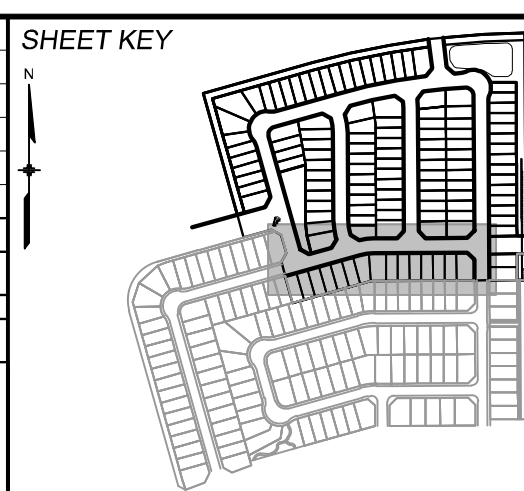
DATE: _____ BY: _____

PROJECT NUMBER: _____

IN CASE OF ERRORS OR OMISSIONS WITH THE WATER DESIGN AS SHOWN ON THIS DOCUMENT THE STANDARDS AS DEFINED IN THE "RULES AND REGULATIONS FOR INSTALLATION OF WASTEWATER MAINS AND SERVICES" SHALL RULE.

APPROVAL EXPIRES 180 DAYS FROM DESIGN APPROVAL

REFERENCE DRAWINGS			
No.	DATE	DESCRIPTION	BY
COMPUTER FILE MANAGEMENT			
FILE NAME:			
CTB FILE:			
PLOT DATE:			
THIS DRAWING IS CURRENT AS OF PLOT DATE AND MAY BE SUBJECT TO CHANGE.			



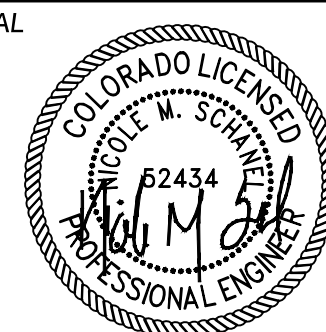
BENCHMARK
COLORADO SPRINGS UTILITIES (FIMS) MONUMENT F206
A BERNTSEN TOP SECURITY MONUMENT SYSTEM WITH A 3.5-INCH DIAMETER ALUMINUM CAP IN A ROAD BOX, LOCATED ON THE NORTHWEST CORNER OF FONTAINE BOULEVARD AND POWERS BOULEVARD.
ELEVATION - 5897.89' U.S. SURVEY FT

BASIS OF BEARING
BEARINGS ARE BASED ON THE NORTH LINE OF THE NORTHWEST QUARTER OF SECTION 9, TOWNSHIP 15 SOUTH, RANGE 68 WEST OF THE 6TH P.M. SAID LINE BEARS S89°51'23"E FROM THE NORTHWEST CORNER OF SAID SECTION 9 (2 1/2' AULM. CAP PLS 17664) TO THE N 1/4 CORNER OF SAID SECTION 9 (3 1/4' AULM. CAP PLS 10377)

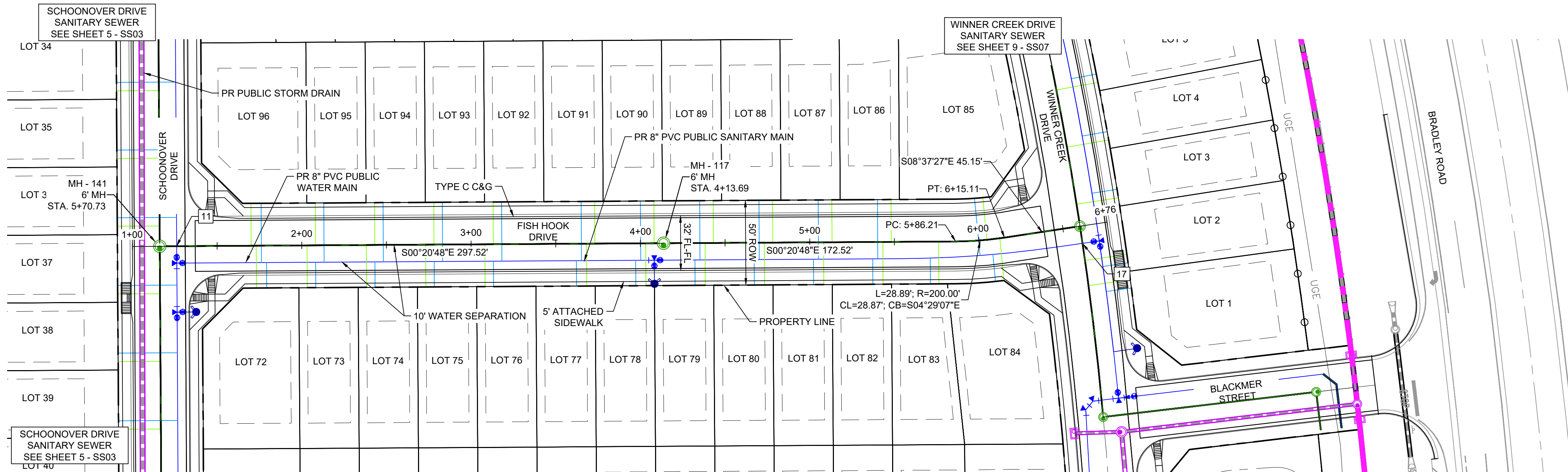
PREPARED BY:



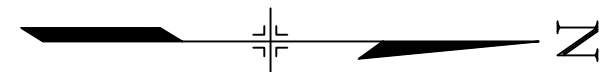
SEAL

FOR AND ON BEHALF OF
MATRIX DESIGN GROUP, INC.
PROJECT No.

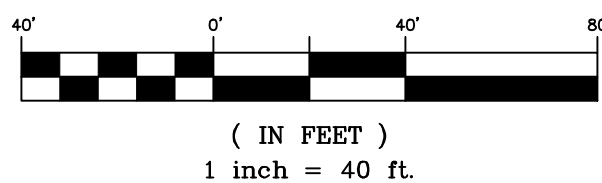
DESIGNED BY:	SCALE	DATE ISSUED:	DRAWING No.
CHECKED BY:	HORIZ.	SHEET	OF
	VERT.		

Know what's below.
Call before you dig.

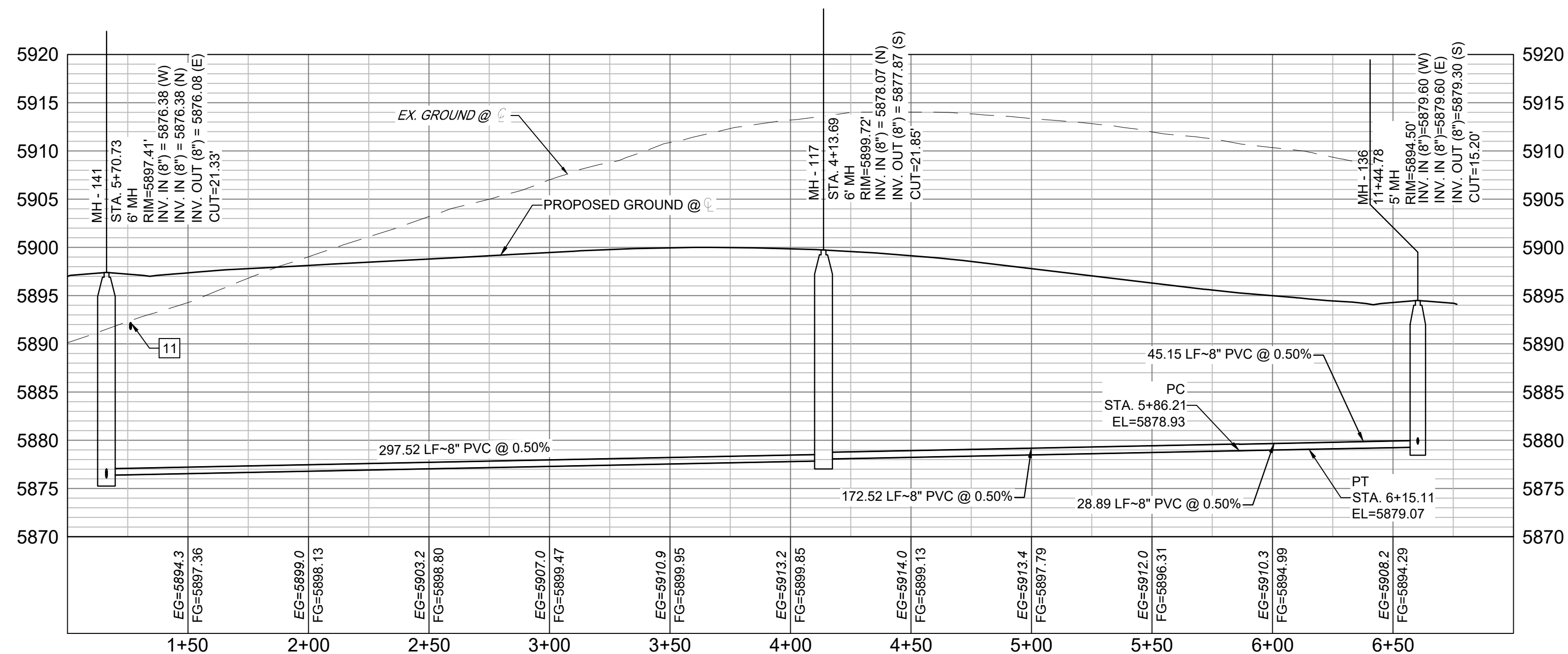
UTILITY CROSSING DETAILS				
CROSSING #	N & E	TOP OF PIPE	BTM OF PIPE	VERT. SEP.
11	N 8223.77 E 13767.48	8" PVC SEWER 5877.12	8" PVC WATER 5891.49	14.37'



GRAPHIC SCALE



NOTE:
CURVILINEAR PIPE TO BE ACHIEVED USING
3" BEND AT EVERY OTHER JOINT.



Fishhook-SAN PROFILE
SCALE: (H) 1" = 40' (V) 1" = 10'
START STA: 1+00.00, END STA: 7+00.00

THE LOCATIONS OF EXISTING ABOVE GROUND AND UNDERGROUND UTILITIES ARE SHOWN IN AN APPROXIMATE WAY ONLY. THE CONTRACTOR SHALL DETERMINE THE EXACT LOCATION OF ALL EXISTING UTILITIES BEFORE COMMENCING WORK. THE CONTRACTOR SHALL BE FULLY RESPONSIBLE FOR ANY AND ALL DAMAGES WHICH MIGHT BE CAUSED BY HIS FAILURE TO EXACTLY LOCATE AND PRESERVE ANY AND ALL ABOVE GROUND AND UNDERGROUND UTILITIES.

THE WIDEFIELD WATER AND SANITATION DISTRICT RECOGNIZES THE DESIGN ENGINEER AS HAVING RESPONSIBILITY FOR THE DESIGN AND HAS LIMITED ITS SCOPE OF REVIEW ACCORDINGLY.

**WIDEFIELD WATER AND SANITATION DISTRICT
WASTEWATER DESIGN APPROVAL**

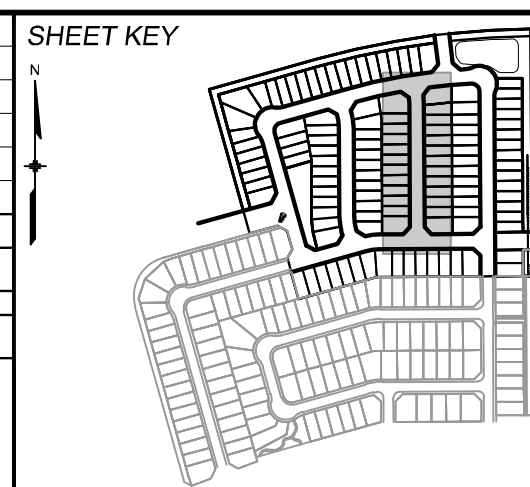
DATE: _____ BY: _____

PROJECT NUMBER: _____

IN CASE OF ERRORS OR OMISSIONS WITH THE WATER DESIGN AS SHOWN ON THIS DOCUMENT THE STANDARDS AS DEFINED IN THE "RULES AND REGULATIONS FOR INSTALLATION OF WASTEWATER MAINS AND SERVICES" SHALL RULE.

APPROVAL EXPIRES 180 DAYS FROM DESIGN APPROVAL

REFERENCE DRAWINGS					
	No.	DATE	DESCRIPTION		
REVISIONS					
COMPUTER FILE MANAGEMENT					
FILE NAME:					
CTB FILE:					
PLOT DATE:					
THIS DRAWING IS CURRENT AS OF PLOT DATE AND MAY BE SUBJECT TO CHANGE.					



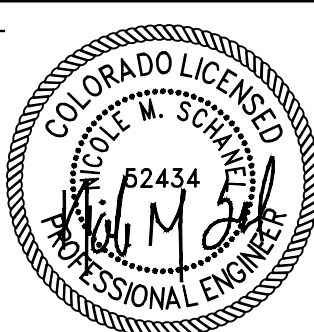
BENCHMARK
COLORADO SPRINGS UTILITIES (FIMS) MONUMENT F206
A BERNTSEN TOP SECURITY MONUMENT SYSTEM WITH A 3.5-INCH DIAMETER ALUMINUM CAP IN A ROAD BOX, LOCATED ON THE NORTHWEST CORNER OF FONTAINE BOULEVARD AND POWERS BOULEVARD.
ELEVATION - 5897.89' U.S. SURVEY FT

BASIS OF BEARING
BEARINGS ARE BASED ON THE NORTH LINE OF THE NORTHWEST QUARTER OF SECTION 9, TOWNSHIP 15 SOUTH, RANGE 68 WEST OF THE 6TH P.M. SAID LINE BEARS S89°51'23"E FROM THE NORTHWEST CORNER OF SAID SECTION 9 (2 1/2' AULM. CAP PLS 17664) TO THE N 1/4 CORNER OF SAID SECTION 9 (3 1/4' AULM. CAP PLS 10377)

PREPARED BY:

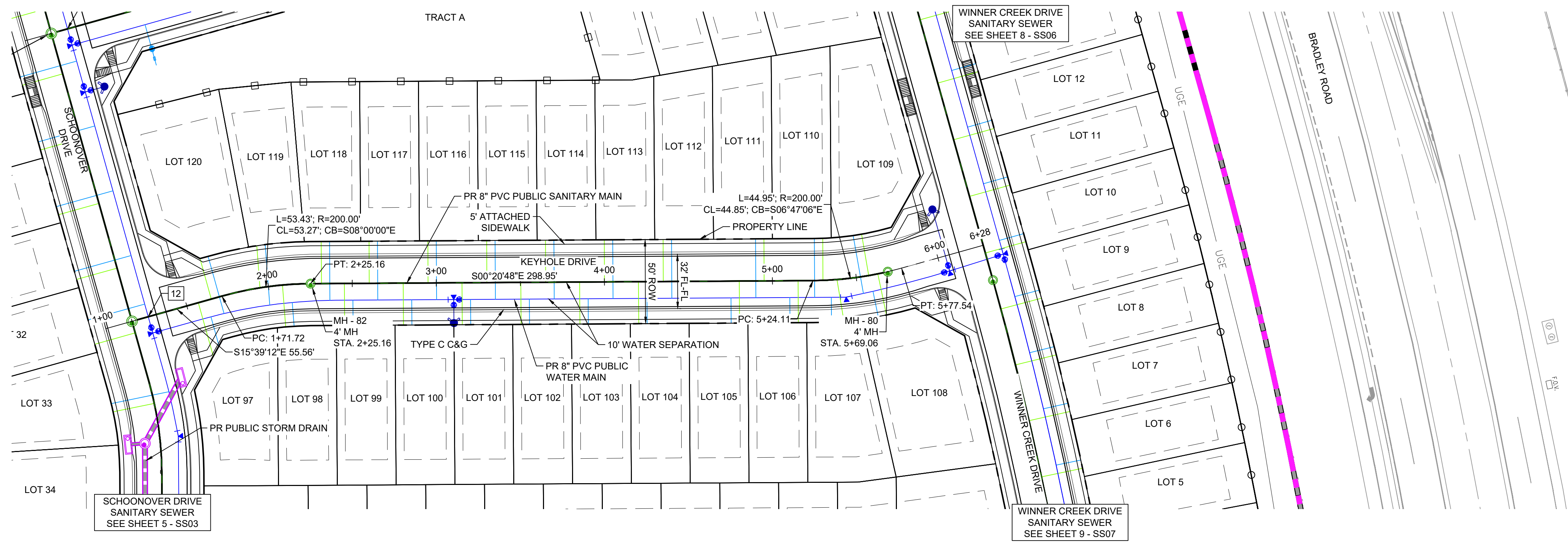


SEAL

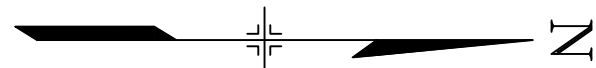
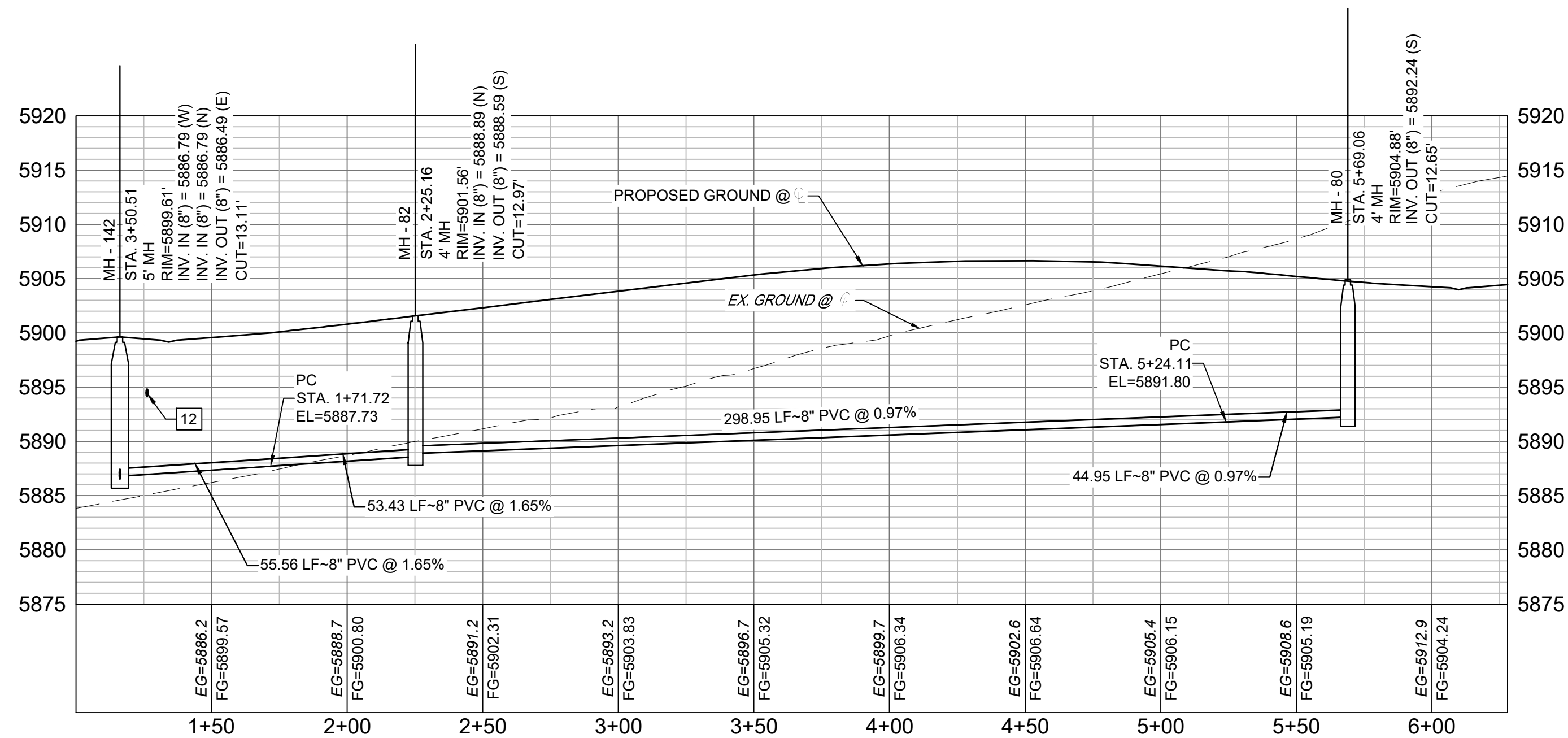
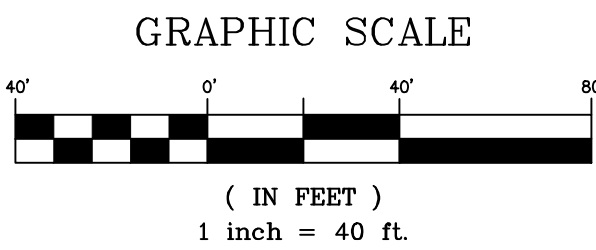


FOR AND ON BEHALF OF
MATRIX DESIGN GROUP, INC.
PROJECT No.

DESIGNED BY:	SCALE	DATE ISSUED:	DRAWING No.
CHECKED BY:	HORIZ.	SHEET	OF
	VERT.		

Know what's below.
Call before you dig.

UTILITY CROSSING DETAILS				
CROSSING #	N & E	TOP OF PIPE	BTM OF PIPE	VERT. SEP.
12	N 8204.91 E 13546.71	8" PVC SEWER 5887.65	8" PVC WATER 5894.12	6.47'

NOTE:
CURVILINEAR PIPE TO BE ACHIEVED USING
3" BEND AT EVERY OTHER JOINT.

Keyhole-SAN PROFILE
SCALE: (H) 1" = 40' (V) 1" = 10'
START STA: 1+00.00, END STA: 6+27.97

THE LOCATIONS OF EXISTING ABOVE GROUND AND UNDERGROUND UTILITIES ARE SHOWN IN AN APPROXIMATE WAY ONLY. THE CONTRACTOR SHALL DETERMINE THE EXACT LOCATION OF ALL EXISTING UTILITIES BEFORE COMMENCING WORK. THE CONTRACTOR SHALL BE FULLY RESPONSIBLE FOR ANY AND ALL DAMAGES WHICH MIGHT BE CAUSED BY HIS FAILURE TO EXACTLY LOCATE AND PRESERVE ANY AND ALL ABOVE GROUND AND UNDERGROUND UTILITIES.

THE WIDEFIELD WATER AND SANITATION DISTRICT RECOGNIZES THE DESIGN ENGINEER AS HAVING RESPONSIBILITY FOR THE DESIGN AND HAS LIMITED ITS SCOPE OF REVIEW ACCORDINGLY.

**WIDEFIELD WATER AND SANITATION DISTRICT
WASTEWATER DESIGN APPROVAL**

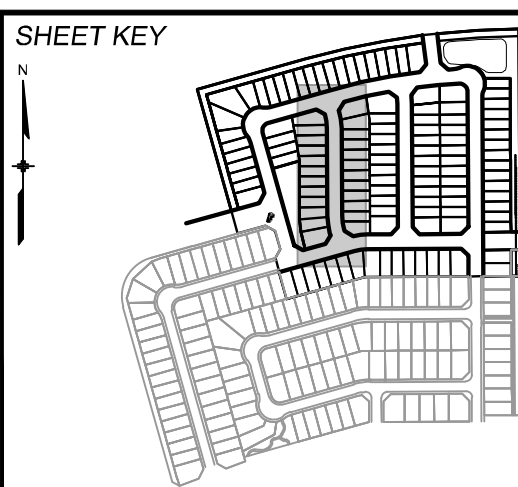
DATE: _____ BY: _____

PROJECT NUMBER: _____

IN CASE OF ERRORS OR OMISSIONS WITH THE WATER DESIGN AS SHOWN ON THIS DOCUMENT THE STANDARDS AS DEFINED IN THE "RULES AND REGULATIONS FOR INSTALLATION OF WASTEWATER MAINS AND SERVICES" SHALL RULE.

APPROVAL EXPIRES 180 DAYS FROM DESIGN APPROVAL

REFERENCE DRAWINGS			
No.	DATE	DESCRIPTION	BY
COMPUTER FILE MANAGEMENT			
FILE NAME:			
CTB FILE:			
PLOT DATE:			
THIS DRAWING IS CURRENT AS OF PLOT DATE AND MAY BE SUBJECT TO CHANGE.			



BENCHMARK
COLORADO SPRINGS UTILITIES (FIMS) MONUMENT F206
A BERNTSEN TOP SECURITY MONUMENT SYSTEM WITH A 3.5-INCH DIAMETER ALUMINUM CAP IN A ROAD BOX, LOCATED ON THE NORTHWEST CORNER OF FONTAINE BOULEVARD AND POWERS BOULEVARD.
ELEVATION - 5897.89' U.S. SURVEY FT

BASIS OF BEARING
BEARINGS ARE BASED ON THE NORTH LINE OF THE NORTHWEST QUARTER OF SECTION 9, TOWNSHIP 15 SOUTH, RANGE 68 WEST OF THE 6TH P.M. SAID LINE BEARS S89°51'23"E FROM THE NORTHWEST CORNER OF SAID SECTION 9 (2 1/2' AULM. CAP PLS 17664) TO THE N 1/4 CORNER OF SAID SECTION 9 (3 1/4' AULM. CAP PLS 10377)

PREPARED BY:



SEAL

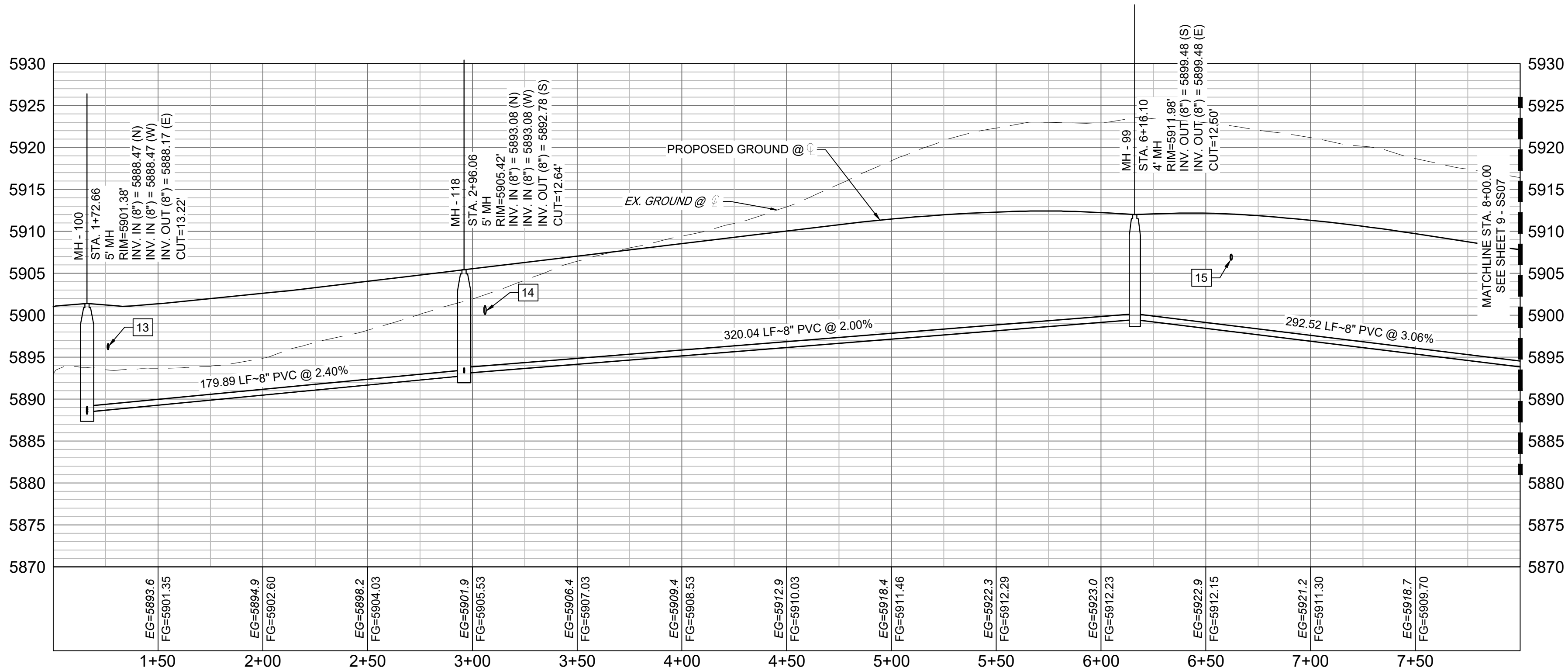
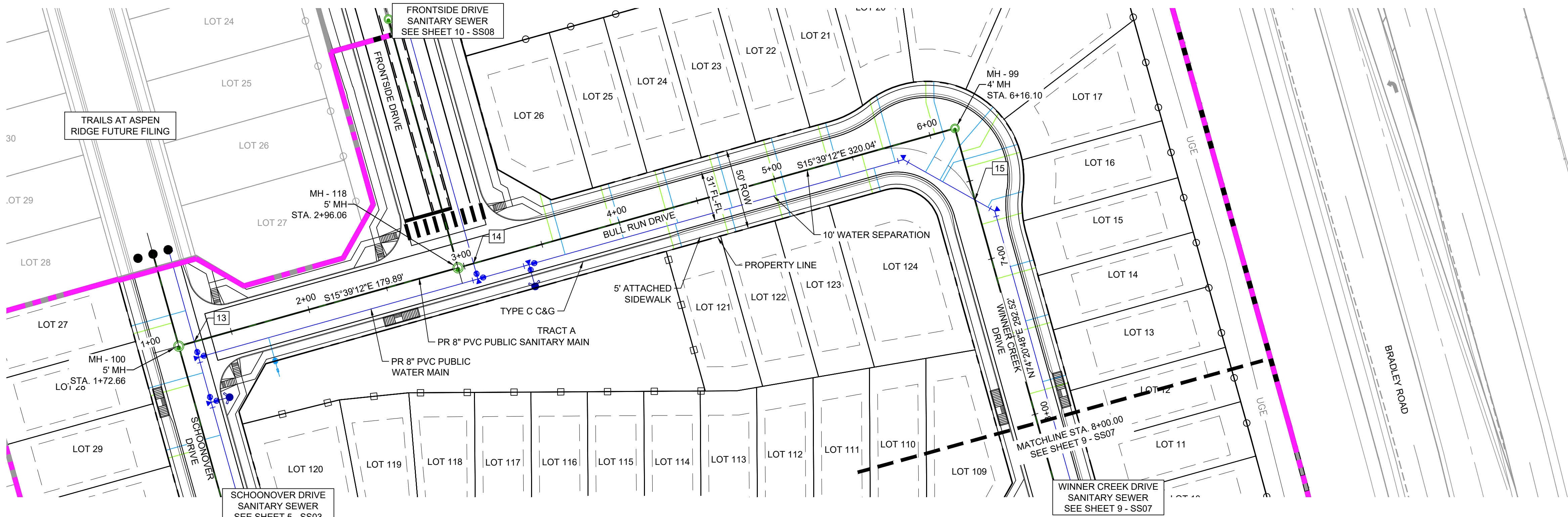


FOR AND ON BEHALF OF
MATRIX DESIGN GROUP, INC.
PROJECT No.

DESIGNED BY:	SCALE	DATE ISSUED:	DRAWING No.
CHECKED BY:	HORIZ. VERT.	SHEET OF	

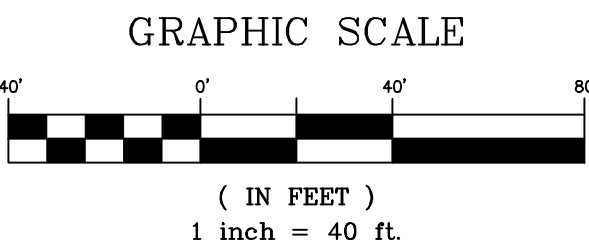
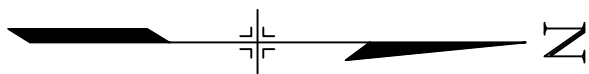


Know what's below.
Call before you dig.



BullRun_WinnerCreek-SAN PROFILE
SCALE: (H) 1" = 40' (V) 1" = 10'
START STA: 1+00.00, END STA: 8+00.00

UTILITY CROSSING DETAILS				
CROSSING #	N & E	TOP OF PIPE	BTM OF PIPE	VERT. SEP.
13	N 8156.91 E 13375.46	8" PVC SEWER 5889.40	8" PVC WATER 5895.90	6.50'
14	N 8330.13 E 13326.92	8" PVC SEWER 5893.97	12" PVC WATER 5900.08	6.11'
15	N 8641.09 E 13287.58	8" PVC SEWER 5898.76	8" PVC WATER 5906.56	7.80'



THE LOCATIONS OF EXISTING ABOVE GROUND AND UNDERGROUND UTILITIES ARE SHOWN IN AN APPROXIMATE WAY ONLY. THE CONTRACTOR SHALL DETERMINE THE EXACT LOCATION OF ALL EXISTING UTILITIES BEFORE COMMENCING WORK. THE CONTRACTOR SHALL BE FULLY RESPONSIBLE FOR ANY AND ALL DAMAGES WHICH MIGHT BE CAUSED BY HIS FAILURE TO EXACTLY LOCATE AND PRESERVE ANY AND ALL ABOVE GROUND AND UNDERGROUND UTILITIES.

THE WIDEFIELD WATER AND SANITATION DISTRICT RECOGNIZES THE DESIGN ENGINEER AS HAVING RESPONSIBILITY FOR THE DESIGN AND HAS LIMITED ITS SCOPE OF REVIEW ACCORDINGLY.

**WIDEFIELD WATER AND SANITATION DISTRICT
WASTEWATER DESIGN APPROVAL**

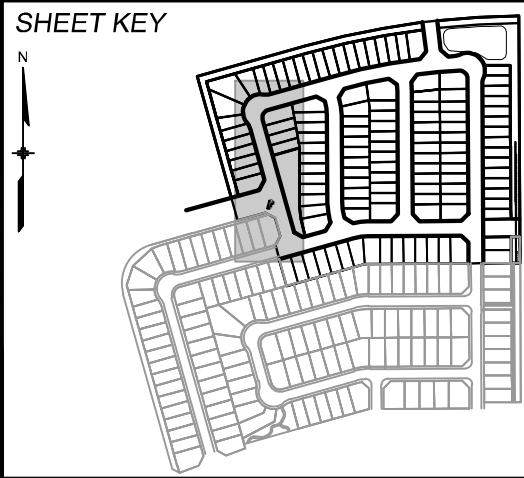
DATE: _____ BY: _____

PROJECT NUMBER: _____

IN CASE OF ERRORS OR OMISSIONS WITH THE WATER DESIGN AS SHOWN ON THIS DOCUMENT THE STANDARDS AS DEFINED IN THE "RULES AND REGULATIONS FOR INSTALLATION OF WASTEWATER MAINS AND SERVICES" SHALL RULE.

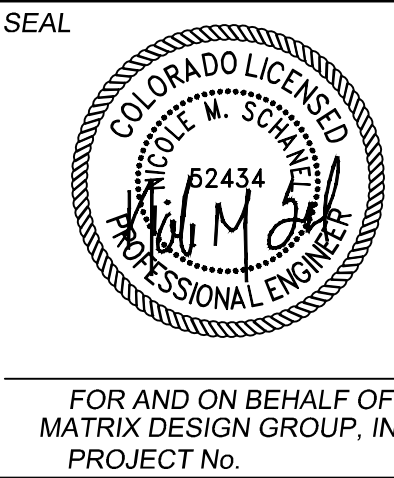
APPROVAL EXPIRES 180 DAYS FROM DESIGN APPROVAL

REFERENCE DRAWINGS			
No.	DATE	DESCRIPTION	BY
COMPUTER FILE MANAGEMENT			
FILE NAME:			
CTB FILE:			
PLOT DATE:			
THIS DRAWING IS CURRENT AS OF PLOT DATE AND MAY BE SUBJECT TO CHANGE.			



BENCHMARK
COLORADO SPRINGS UTILITIES (FIMS) MONUMENT F206
A BERNTSEN TOP SECURITY MONUMENT SYSTEM WITH A 3.5-INCH DIAMETER ALUMINUM CAP IN A ROAD BOX, LOCATED ON THE NORTHWEST CORNER OF FONTAINE BOULEVARD AND POWERS BOULEVARD.
ELEVATION - 5897.89' U.S. SURVEY FT

BASIS OF BEARING
BEARINGS ARE BASED ON THE NORTH LINE OF THE NORTHWEST QUARTER OF SECTION 9, TOWNSHIP 15 SOUTH, RANGE 68 WEST OF THE 6TH P.M. SAID LINE BEARS S89°51'23"E FROM THE NORTHWEST CORNER OF SAID SECTION 9 (2 1/2' AULM. CAP PLS 17664) TO THE N 1/4 CORNER OF SAID SECTION 9 (3 1/4' AULM. CAP PLS 10377)



DESIGNED BY:	SCALE	DATE ISSUED:	DRAWING No.
CHECKED BY:	HORIZ.	SHEET	OF
	VERT.		



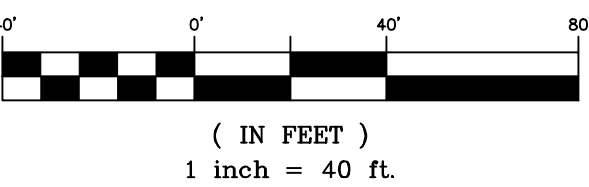
Know what's below.
Call before you dig.

NOTE:
CURVILINEAR PIPE TO BE ACHIEVED USING
3° BEND AT EVERY OTHER JOINT.

UTILITY CROSSING DETAILS				
CROSSING #	N & E	TOP OF PIPE	BTM OF PIPE	VERT. SEP.
16	N 8704.16 E 13512.68	8" PVC SEWER 5891.60	8" PVC WATER 5898.29	6.69'
17	N 8758.76 E 13765.98	8" PVC SEWER 5880.34	8" PVC WATER 5888.74	8.40'
18	N 8770.00 E 13858.47	8" PVC SEWER 5881.33	8" PVC WATER 5884.78	3.45'
19	N 8897.89 E 13863.43	8" PVC SEWER 5883.40	8" PVC WATER 5884.23	0.83'



GRAPHIC SCALE



THE LOCATIONS OF EXISTING ABOVE GROUND AND UNDERGROUND UTILITIES ARE SHOWN IN AN APPROXIMATE WAY ONLY. THE CONTRACTOR SHALL DETERMINE THE EXACT LOCATION OF ALL EXISTING UTILITIES BEFORE COMMENCING WORK. THE CONTRACTOR SHALL BE FULLY RESPONSIBLE FOR ANY AND ALL DAMAGES WHICH MIGHT BE CAUSED BY HIS FAILURE TO EXACTLY LOCATE AND PRESERVE ANY AND ALL ABOVE GROUND AND UNDERGROUND UTILITIES.

THE WIDEFIELD WATER AND SANITATION DISTRICT RECOGNIZES THE DESIGN ENGINEER AS HAVING RESPONSIBILITY FOR THE DESIGN AND HAS LIMITED ITS SCOPE OF REVIEW ACCORDINGLY.

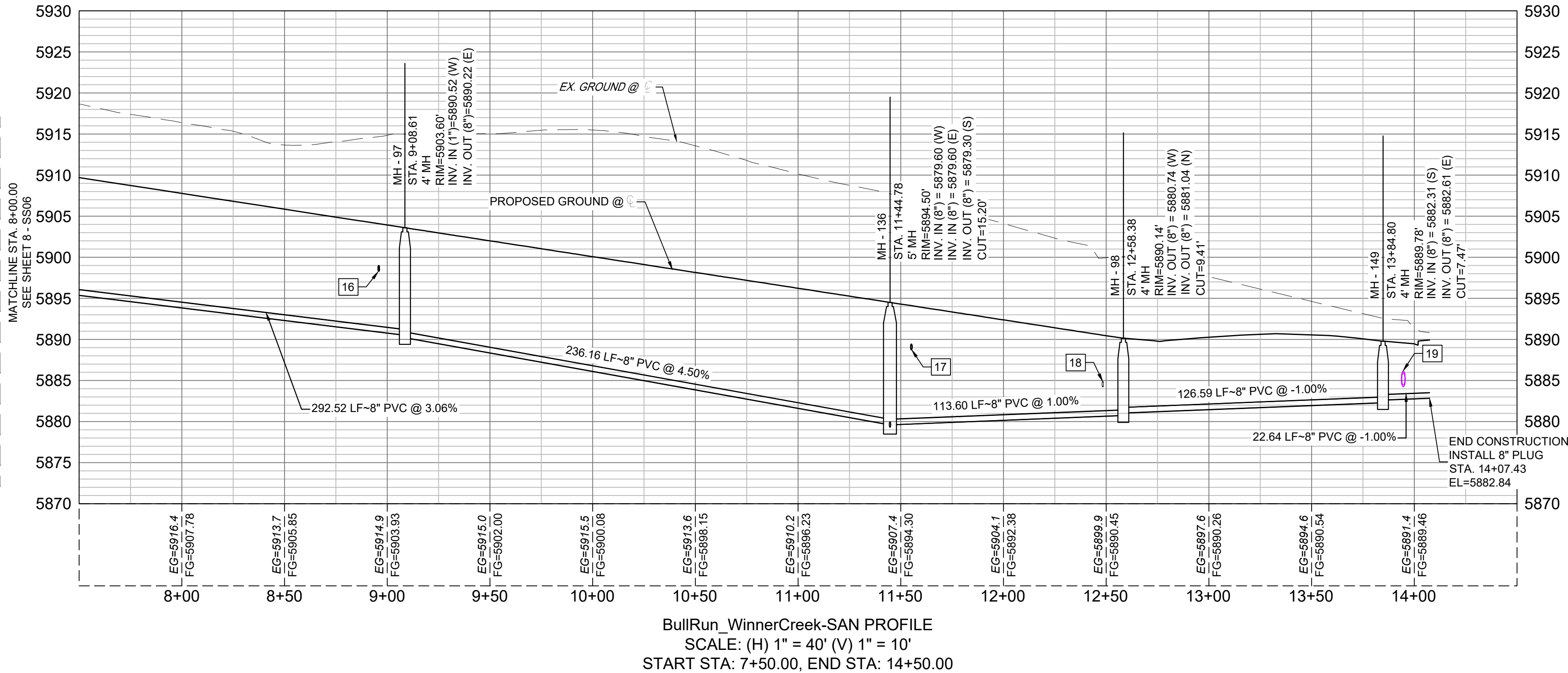
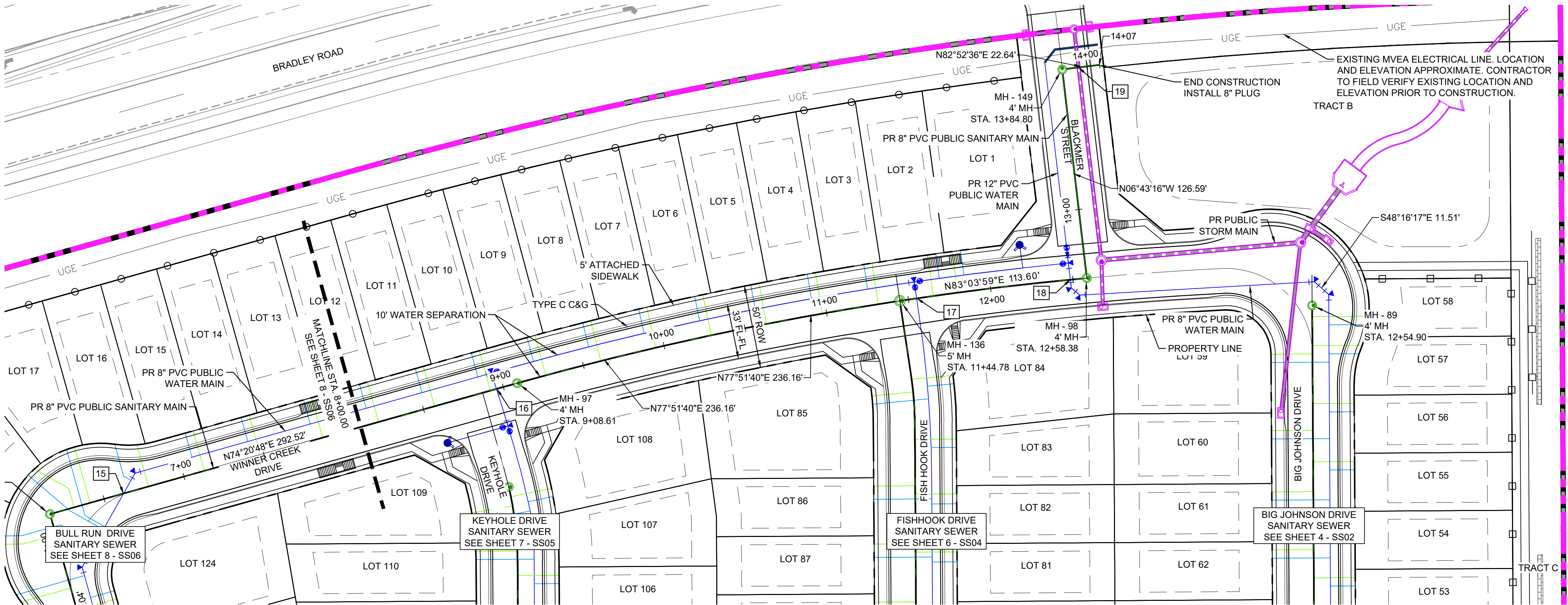
**WIDEFIELD WATER AND SANITATION DISTRICT
WASTEWATER DESIGN APPROVAL**

DATE: _____ BY: _____

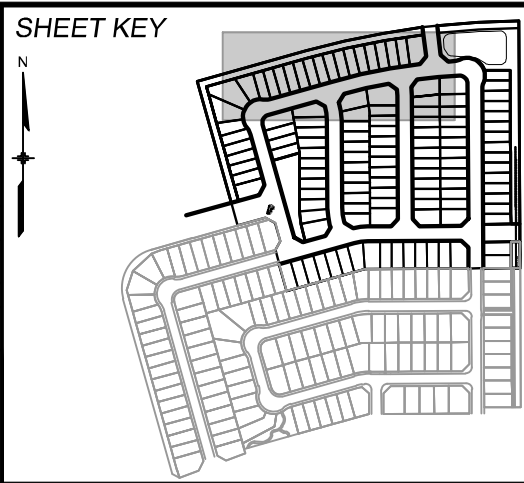
PROJECT NUMBER: _____

IN CASE OF ERRORS OR OMISSIONS WITH THE WATER DESIGN AS SHOWN ON THIS DOCUMENT THE STANDARDS AS DEFINED IN THE "RULES AND REGULATIONS FOR INSTALLATION OF WASTEWATER MAINS AND SERVICES" SHALL RULE.

APPROVAL EXPIRES 180 DAYS FROM DESIGN APPROVAL



REFERENCE DRAWINGS			
No.	DATE	DESCRIPTION	BY
COMPUTER FILE MANAGEMENT			
FILE NAME:			
CTB FILE:			
PLOT DATE:			
THIS DRAWING IS CURRENT AS OF PLOT DATE AND MAY BE SUBJECT TO CHANGE.			



BENCHMARK
COLORADO SPRINGS UTILITIES (FIMS) MONUMENT F206
A BERNTSEN TOP SECURITY MONUMENT SYSTEM WITH A 3.5-INCH DIAMETER ALUMINUM CAP IN A ROAD BOX, LOCATED ON THE NORTHWEST CORNER OF FONTAINE BOULEVARD AND POWERS BOULEVARD.
ELEVATION - 5897.89' U.S. SURVEY FT

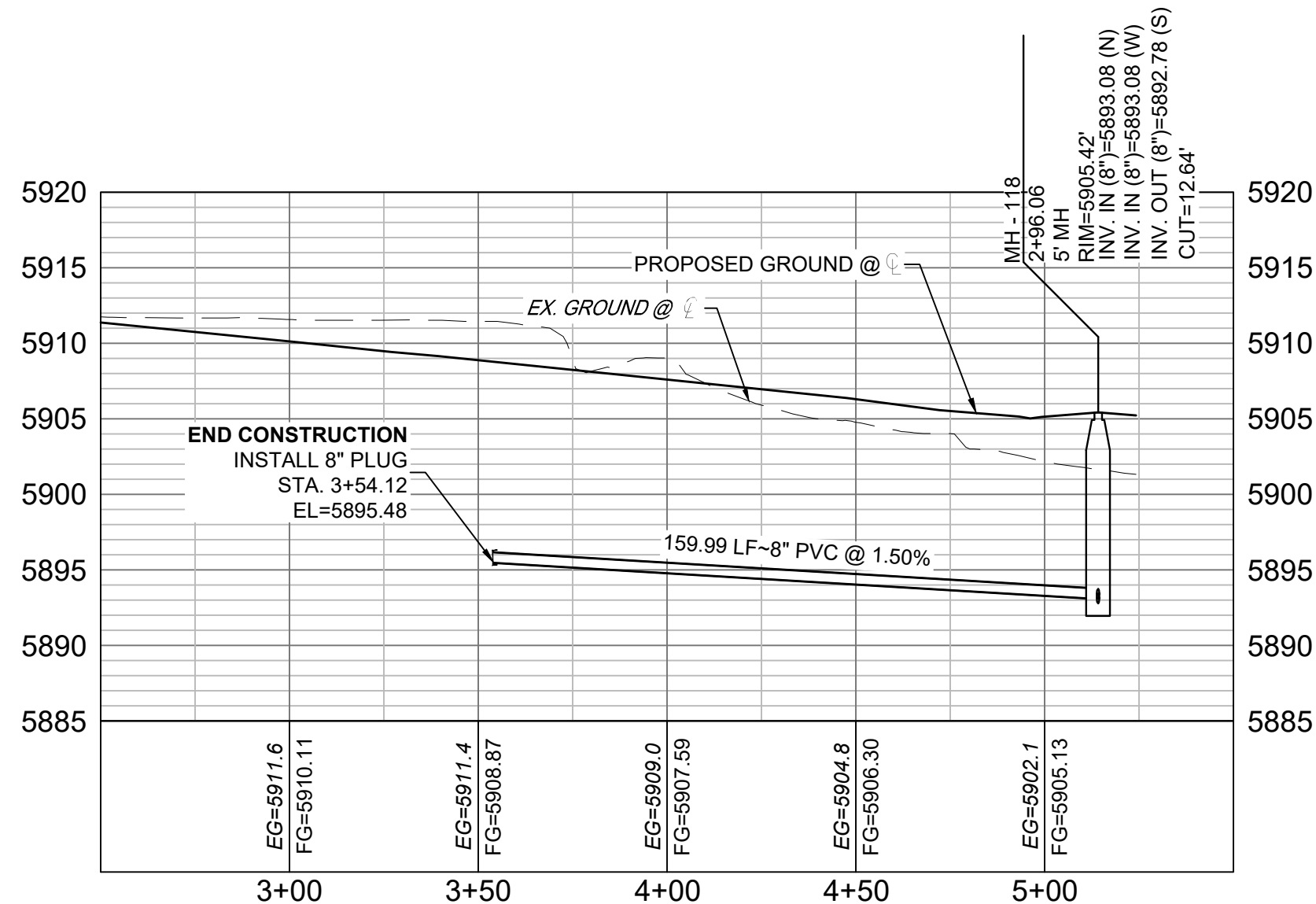
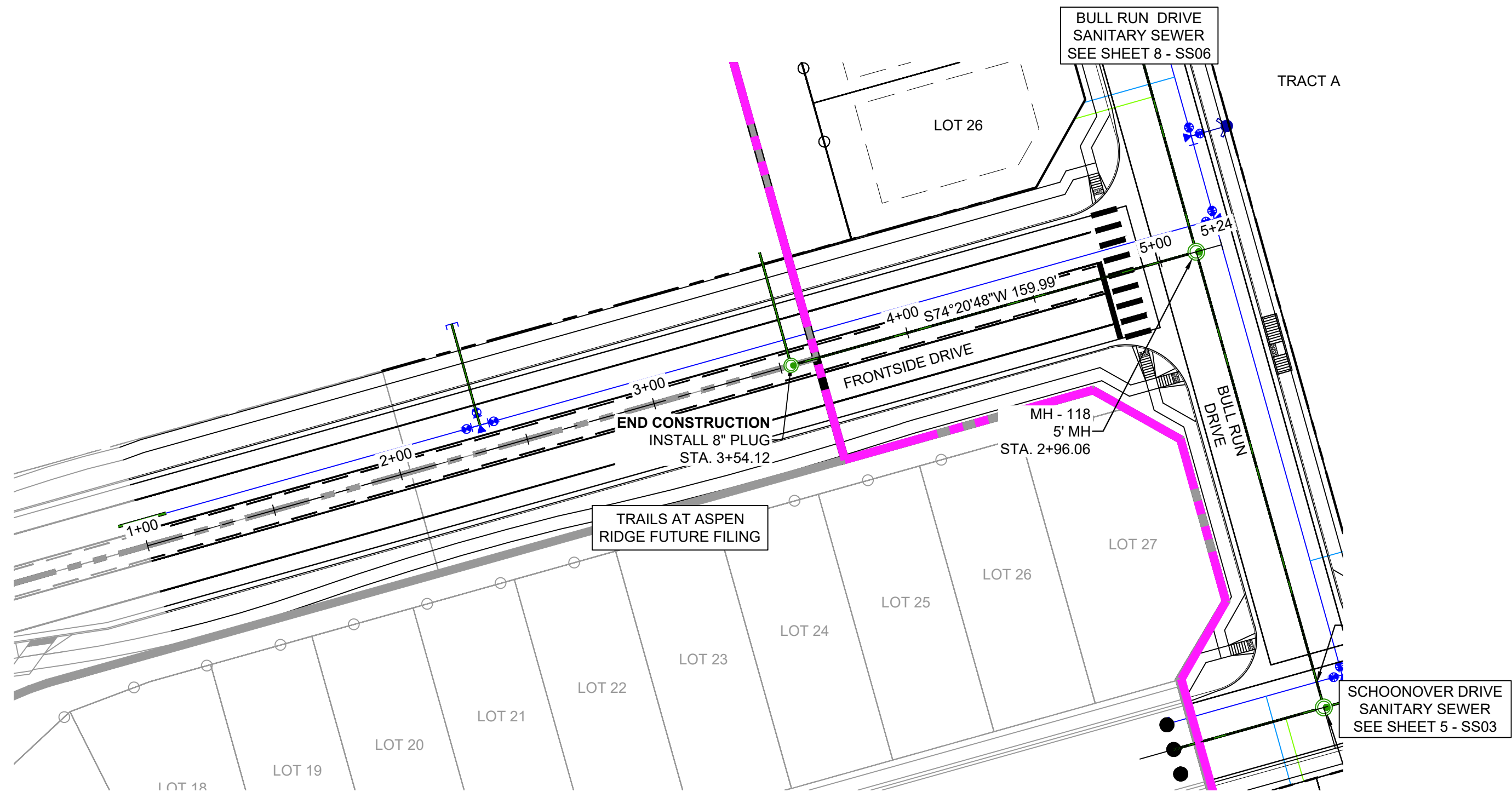
BASIS OF BEARING
BEARINGS ARE BASED ON THE NORTH LINE OF THE NORTHWEST QUARTER OF SECTION 9, TOWNSHIP 15 SOUTH, RANGE 68 WEST OF THE 6TH P.M. SAID LINE BEARS S89°51'23"E FROM THE NORTHWEST CORNER OF SAID SECTION 9 (2 1/2" AULM. CAP PLS 17664) TO THE N 1/4 CORNER OF SAID SECTION 9 (3 1/2" AULM. CAP PLS 10377)



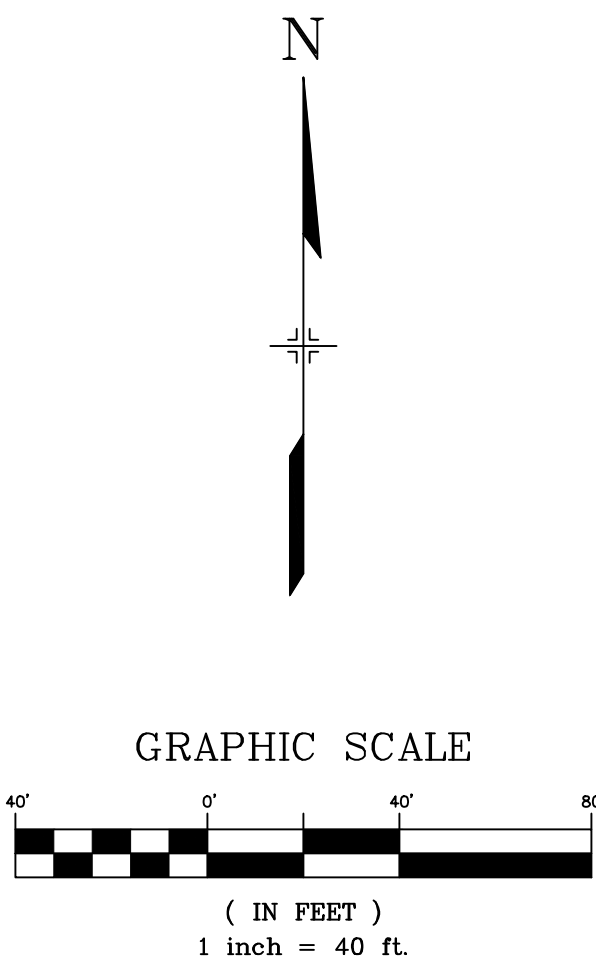
DESIGNED BY:	SCALE	DATE ISSUED:	DRAWING No.
DRAWN BY:	HORIZ.	SHEET	OF
CHECKED BY:	VERT.		



Know what's below.
Call before you dig.



Frontside-SAN PROFILE
SCALE: (H) 1" = 40' (V) 1" = 10'
START STA: 2+50.00, END STA: 5+50.00



THE LOCATIONS OF EXISTING ABOVE GROUND AND UNDERGROUND UTILITIES ARE SHOWN IN AN APPROXIMATE WAY ONLY. THE CONTRACTOR SHALL DETERMINE THE EXACT LOCATION OF ALL EXISTING UTILITIES BEFORE COMMENCING WORK. THE CONTRACTOR SHALL BE FULLY RESPONSIBLE FOR ANY AND ALL DAMAGES WHICH MIGHT BE CAUSED BY HIS FAILURE TO EXACTLY LOCATE AND PRESERVE ANY AND ALL ABOVE GROUND AND UNDERGROUND UTILITIES.

THE WIDEFIELD WATER AND SANITATION DISTRICT RECOGNIZES THE DESIGN ENGINEER AS HAVING RESPONSIBILITY FOR THE DESIGN AND HAS LIMITED ITS SCOPE OF REVIEW ACCORDINGLY.

**WIDEFIELD WATER AND SANITATION DISTRICT
WASTEWATER DESIGN APPROVAL**

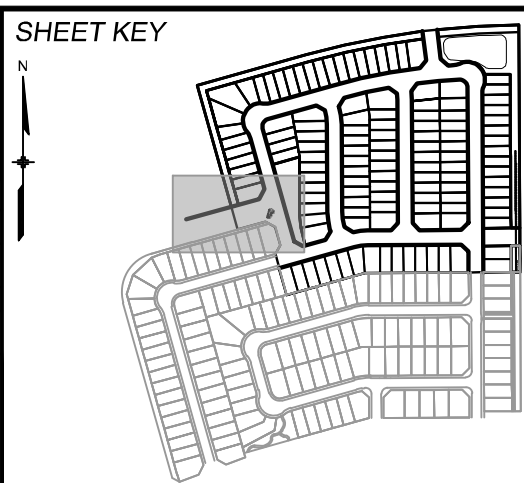
DATE: _____ BY: _____

PROJECT NUMBER: _____

IN CASE OF ERRORS OR OMISSIONS WITH THE WATER DESIGN AS SHOWN ON THIS DOCUMENT THE STANDARDS AS DEFINED IN THE "RULES AND REGULATIONS FOR INSTALLATION OF WASTEWATER MAINS AND SERVICES" SHALL RULE.

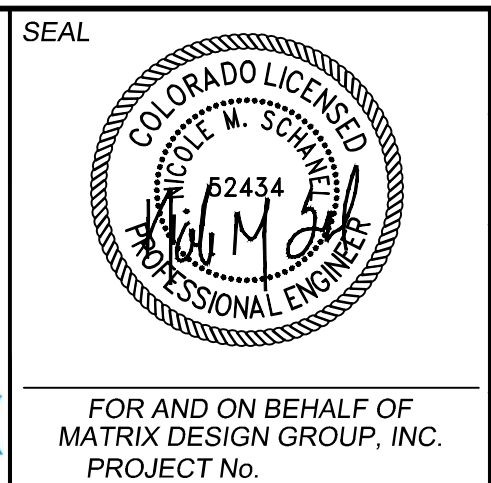
APPROVAL EXPIRES 180 DAYS FROM DESIGN APPROVAL

REFERENCE DRAWINGS			
No.	DATE	DESCRIPTION	BY
COMPUTER FILE MANAGEMENT			
FILE NAME:			
CTB FILE:			
PLOT DATE:			
THIS DRAWING IS CURRENT AS OF PLOT DATE AND MAY BE SUBJECT TO CHANGE.			



BENCHMARK
COLORADO SPRINGS UTILITIES (FIMS) MONUMENT F206
A BERNTSEN TOP SECURITY MONUMENT SYSTEM WITH A 3.5-INCH DIAMETER ALUMINUM CAP IN A ROAD BOX, LOCATED ON THE NORTHWEST CORNER OF FONTAINE BOULEVARD AND POWERS BOULEVARD.
ELEVATION - 5897.89' U.S. SURVEY FT

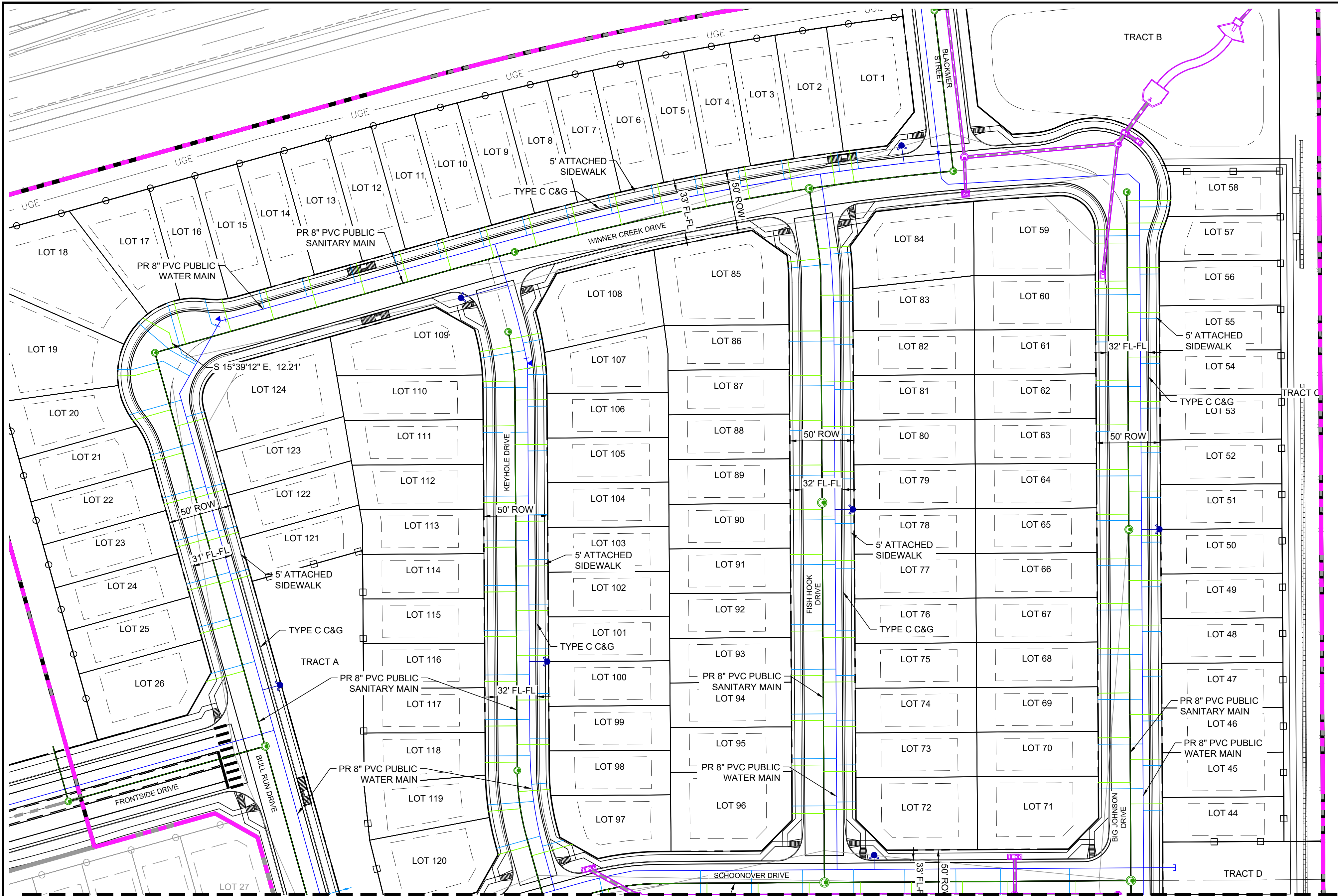
BASIS OF BEARING
BEARINGS ARE BASED ON THE NORTH LINE OF THE NORTHWEST QUARTER OF SECTION 9, TOWNSHIP 15 SOUTH, RANGE 68 WEST OF THE 6TH P.M. SAID LINE BEARS S89°51'23"E FROM THE NORTHWEST CORNER OF SAID SECTION 9 (2 1/2' AULM. CAP PLS 17664) TO THE N 1/4 CORNER OF SAID SECTION 9 (3 1/4' AULM. CAP PLS 10377)



DESIGNED BY:	SCALE	DATE ISSUED:	DRAWING No.
CHECKED BY:	HORIZ.	SHEET	OF
	VERT.		



Know what's below.
Call before you dig.



SANITARY SERVICE TABLE				
LOT #	BEARING	LENGTH	NORTHING	EASTING
1	S08°07'41"E	25.12	8786.98	13787.24
2	S08°07'41"E	24.67	8784.89	13772.38
3	S08°44'23"E	25.36	8780.25	13738.82
4	S09°45'23"E	25.36	8774.48	13704.70
5	S10°25'56"E	25.49	8768.25	13670.65
6	S11°47'25"E	25.36	8761.28	13636.74
7	S12°48'27"E	25.36	8753.65	13602.96
8	S13°49'30"E	24.64	8744.84	13569.47
9	S14°50'50"E	24.64	8736.11	13535.80
10	S15°39'12"E	24.64	8727.15	13502.07
11	S15°39'12"E	24.64	8717.71	13468.36
12	S15°39'12"E	25.00	8708.26	13434.66
13	S15°39'12"E	24.64	8698.82	13400.96
14	S15°39'12"E	25.36	8688.27	13363.32
15	S15°39'12"E	25.36	8678.83	13329.61
16	S15°39'12"E	25.36	8669.73	13295.82
17	S15°39'12"E	35.00	8669.14	13257.98
18	N60°39'12"W	23.82	8644.16	13254.59
19	S89°11'50"W	13.05	8610.69	13227.14
20	N74°20'48"E	31.38	8575.66	13225.85
21	N74°20'48"E	25.00	8543.60	13241.14
22	N74°20'48"E	25.00	8509.90	13250.59
23	N74°20'48"E	25.00	8476.20	13260.03
24	N74°20'48"E	25.00	8442.50	13269.47
25	N74°20'48"E	25.00	8408.79	13278.92
26	N74°20'48"E	30.86	8371.09	13283.40
44	S89°39'12"W	24.64	8275.37	14032.18
45	S89°39'12"W	24.64	8310.37	14031.96
46	S89°39'12"W	25.00	8345.37	14031.75
47	S89°39'12"W	25.36	8380.37	14031.54
48	S89°39'12"W	25.36	8415.37	14031.33
49	S89°39'12"W	25.36	8450.37	14031.12
50	S89°39'12"W	25.00	8485.37	14030.91
51	S89°39'12"W	24.64	8520.37	14030.69
52	S89°39'12"W	24.64	8555.37	14030.48
53	S89°39'12"W	24.64	8590.37	14030.27
54	S89°39'12"W	25.00	8625.37	14030.06
55	S89°39'12"W	25.00	8660.36	14029.85
56	S89°39'12"W	24.64	8695.36	14029.63
57	S89°39'12"W	30.43	8730.39	14034.49
58	S89°39'12"W	34.57	8747.92	14038.53
59	N89°39'12"E	24.64	8714.44	13979.52
60	N89°39'12"E	25.00	8684.64	13979.70
61	N89°39'12"E	25.00	8642.06	13979.96
62	N89°39'12"E	25.00	8607.06	13980.17
63	N89°39'12"E	25.00	8572.06	13980.38
64	N89°39'12"E	25.00	8537.06	13980.59
65	N89°39'12"E	25.00	8502.07	13980.80
66	N89°39'12"E	25.00	8467.07	13981.02
67	N89°39'12"E	25.00	8432.07	13981.23
68	N89°39'12"E	25.00	8397.07	13981.44
69	N89°39'12"E	25.00	8362.07	13981.65
70	N89°39'12"E	25.00	8327.07	13981.86
71	N89°39'12"E	25.00	8292.07	13982.07
72	S89°39'12"W	24.64	8270.92	13792.20
73	S89°39'12"W	25.36	8300.92	13792.02
74	S89°39'12"W	24.64	8335.92	13791.80
75	S89°39'12"W	25.36	8370.92	13791.59
76	S89°39'12"W	25.36	8405.92	13791.38
77	S89°39'12"W	24.67	8465.92	13791.02
78	S89°39'12"W	25.36	8500.92	13790.81
79	S89°39'12"W	24.64	8535.92	13790.60

SANITARY SERVICE TABLE				
LOT #	BEARING	LENGTH	NORTHING	EASTING
80	S89°39'12"W	24.64	8570.91	13790.38
81	S89°39'12"W	24.64	8605.91	13790.17
82	S89°39'12"W	24.64	8640.91	13789.96
83	S89°39'12"W	25.36	8673.89	13789.76
84	S84°37'31"W	25.02	8712.26	13787.74
85	N84°20'43"E	25.33	8699.84	13738.85
86	N89°38'48"E	25.00	8645.61	13739.93
87	N89°39'12"E	25.00	8610.61	13740.14
88	N89°39'12"E	25.00	8575.61	13740.35
89	N89°39'12"E	25.00	8540.61	13740.57
90	N89°39'12"E	25.00	8505.61	13740.78
91	N89°39'12"E	25.00	8470.61	13740.99
92	N89°39'12"E	25.00	8440.61	13741.35
93	N89°39'12"E	25.00	8375.62	13741.56
94	N89°39'12"E	25.00	8340.62	13741.78
95	N89°39'12"E	25.00	8305.62	13741.99
96	N89°39'12"E	25.00	8267.62	13742.22
97	S74°20'48"W	33.04	8243.60	13570.18
98	S85°35'48"W	24.65	8286.75	13552.74
99	S89°39'12"W	25.36	8321.81	13551.89
100	S89°39'12"W	25.36	8356.81	13551.67
101	S89°39'12"W	24.64	8391.81	13551.46
102	S89°39'12"W	24.64	8426.81	13551.25
103	S89°39'12"W	25.33	8461.80	13551.04
104	S89°39'12"W	25.36	8496.80	13550.83
105	S89°39'12"W	25.36	8531.80	13550.62
106	S89°39'12"W	25.33	8566.80	13550.41
107	S80°33'50"W	24.94	8618.86	13549.35
108	S78°13'07"W	25.36	8644.22	13545.67
109	N80°05'27"E	24.64	8629.29	13497.59
110	N89°39'12"E	25.01	8606.28	13500.06
111	N89°39'12"E	24.64	8571.29	13500.38
112	N89°39'12"E	25.00	8511.29	13500.74
113	N89°39'12"E	25.00	8476.29	13500.95
114	N89°39'12"E	25.00	8441.29	13501.16
115	N89°39'12"E	25.00	8406.29	13501.37
116	N89°39'12"E	25.00	8371.29	13501.59
117	N89°39'12"E	25.00	8336.29	13501.80
118	N89°39'12"E	24.67	8307.85	13501.97
119	N85°35'48"E	25.43	8269.52	13504.47
120	N74°20'48"E	25.00	8235.70	13512.12
121	S74°20'48"W	24.64	8454.40	13318.08
122	S74°20'48"W	24.64	8488.10	13308.64
123	S74°20'48"W	24.64	8521.80	13299.20
124	S74°20'48"W	24.64	8577.64	13283.53

THE LOCATIONS OF EXISTING ABOVE GROUND AND UNDERGROUND UTILITIES ARE SHOWN IN AN APPROXIMATE WAY ONLY. THE CONTRACTOR SHALL DETERMINE THE EXACT LOCATION OF ALL EXISTING UTILITIES BEFORE COMMENCING WORK. THE CONTRACTOR SHALL BE FULLY RESPONSIBLE FOR ANY AND ALL DAMAGES WHICH MAY BE CAUSED BY HIS FAILURE TO EXACTLY LOCATE AND PRESERVE ANY AND ALL ABOVE GROUND AND UNDERGROUND UTILITIES.

THE WIDEFIELD WATER AND SANITATION DISTRICT RECOGNIZES THE DESIGN ENGINEER AS HAVING RESPONSIBILITY FOR THE DESIGN AND HAS LIMITED ITS SCOPE OF REVIEW ACCORDINGLY.

WIDEFIELD WATER AND SANITATION DISTRICT
WASTEWATER DESIGN APPROVAL

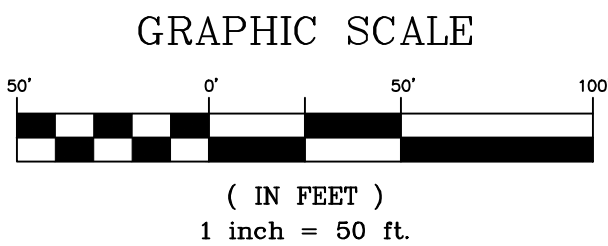
DATE: _____ BY: _____

PROJECT NUMBER: _____

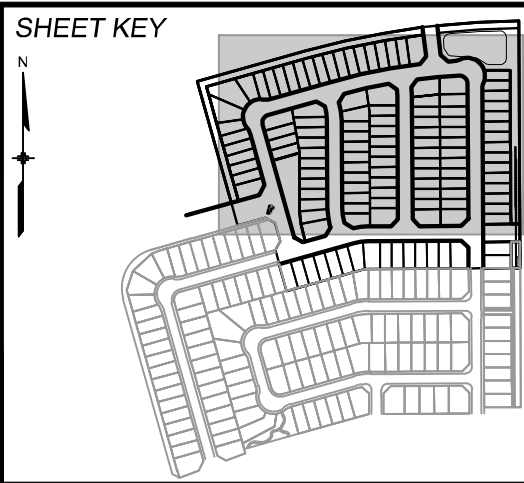
IN CASE OF ERRORS OR OMISSIONS WITH THE WATER DESIGN AS SHOWN ON THIS DOCUMENT THE STANDARDS AS DEFINED IN THE "RULES AND REGULATIONS FOR INSTALLATION OF WASTEWATER MAINS AND SERVICES" SHALL RULE.

APPROVAL EXPIRES 180 DAYS FROM DESIGN APPROVAL

N

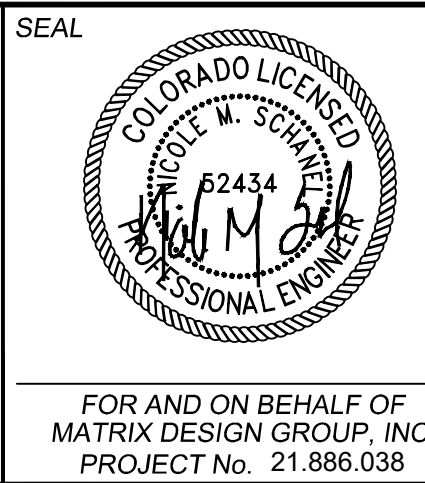


REFERENCE DRAWINGS			
No.	DATE	DESCRIPTION	BY
COMPUTER FILE MANAGEMENT			
FILE NAME: S:\21.886.038 (Trails F6)\100 Plan Sets\Construction Plans\Utility Plans\Sanitary Plan\SS08.dwg			
CTB FILE: Matrix(black).ctb			
PLOT DATE: December 23, 2021 11:43:03 AM			
THIS DRAWING IS CURRENT AS OF PLOT DATE AND MAY BE SUBJECT TO CHANGE.			



BENCHMARK
COLORADO SPRINGS UTILITIES (FIMS) MONUMENT F206
A BERNTSEN TOP SECURITY MONUMENT SYSTEM WITH A 3.5-INCH DIAMETER ALUMINUM CAP IN A ROAD BOX, LOCATED ON THE NORTHWEST CORNER OF FONTAINE BOULEVARD AND POWERS BOULEVARD.
ELEVATION - 5897.89' U.S. SURVEY FT

BASIS OF BEARING
BEARINGS ARE BASED ON THE NORTH LINE OF THE NORTHWEST QUARTER OF SECTION 9, TOWNSHIP 15 SOUTH, RANGE 68 WEST OF THE 6TH P.M. SAID LINE BEARS S89°51'23"E FROM THE NORTHWEST CORNER OF SAID SECTION 9 (2 1/2" AULM. CAP PLS 17664) TO THE N 1/4 CORNER OF SAID SECTION 9 (3 1/4" AULM. CAP PLS 10377)



TRAILS AT ASPEN RIDGE			
FILING NO. 4 8" SANITARY SEWER PLANS			
SANITARY SERVICE PLAN			
DESIGNED BY: BAS	SCALE: 1" = 50'	DATE ISSUED: DECEMBER 2021	DRAWING No. SS09
DRAWN BY: JLW	HORIZ: N/A	SHEET 11 OF 12	
CHECKED BY: NMS	VERT: N/A		

