

TRAILS AT ASPEN RIDGE - FILING NO. 4

EL PASO COUNTY, COLORADO

PUBLIC WATERLINE PLANS

JULY, 2025

DWG No.	SHEET NAME	SHEET No.
TS01	TITLE SHEET	1
GN01	GENERAL NOTES, LEGEND, ABBREVIATIONS, & SHEET INDEX	2
WT01 - WT08	WATERLINE PLAN AND PROFILE	3 - 10
WT09 - WT10	WATERLINE SERVICE PLAN	11 - 12

OWNER VIVA LAND VENTURES, LP
 11427 ROJAS DRIVE
 EL PASO, TX 79936

DEVELOPER COLA, LLC
 555 MIDDLE CREEK PKWY, SUITE 500
 COLORADO SPRINGS, CO 80910

CIVIL ENGINEER MATRIX DESIGN GROUP
 2435 RESEARCH PARKWAY, SUITE 300
 COLORADO SPRINGS, CO 80920

WATER & SANITARY SEWER WIDEFIELD WATER AND SANITATION DISTRICT
 8495 FONTAINE BOULEVARD
 COLORADO SPRINGS, CO 80925
 ROBERT BANNISTER, (719) 390-7111

ELECTRIC MOUNTAIN VIEW ELECTRIC ASSOCIATION
 (719) 495-2283

GAS COLORADO SPRINGS UTILITIES
 1521 HANCOCK EXPRESSWAY
 COLORADO SPRINGS, CO
 MARY HOAGLUND (719) 668-4083

STREET EL PASO COUNTY PUBLIC SERVICES DEPARTMENT
 (719) 520-6460

DRAINAGE EL PASO COUNTY PUBLIC SERVICES DEPARTMENT
 (719) 520-6460

FIRE DEPARTMENT SECURITY FIRE DEPARTMENT
 400 SECURITY BOULEVARD
 SECURITY, CO 80911
 (719) 392-7121

EL PASO COUNTY:

COUNTY PLAN REVIEW IS PROVIDED ONLY FOR GENERAL CONFORMANCE WITH COUNTY DESIGN CRITERIA. THE COUNTY IS NOT RESPONSIBLE FOR THE ACCURACY AND ADEQUACY OF THE DESIGN, DIMENSIONS, AND/OR ELEVATIONS WHICH SHALL BE CONFIRMED AT THE JOB SITE. THE COUNTY THROUGH THE APPROVAL OF THIS DOCUMENT ASSUMES NO RESPONSIBILITY FOR COMPLETENESS AND/OR ACCURACY OF THIS DOCUMENT.

FILED IN ACCORDANCE WITH THE REQUIREMENTS OF THE EL PASO COUNTY LAND DEVELOPMENT CODE, DRAINAGE CRITERIA MANUAL, VOLUMES 1 AND 2, AND ENGINEERING CRITERIA MANUAL AS AMENDED.

IN ACCORDANCE WITH ECM SECTION 1.12, THESE CONSTRUCTION DOCUMENTS WILL BE VALID FOR CONSTRUCTION FOR A PERIOD OF 2 YEARS FROM THE DATE SIGNED BY THE EL PASO COUNTY ENGINEER. IF CONSTRUCTION HAS NOT STARTED WITHIN THOSE 2 YEARS, THE PLANS WILL NEED TO BE RESUBMITTED FOR APPROVAL, INCLUDING PAYMENT OF REVIEW FEES AT THE PLANNING AND COMMUNITY DEVELOPMENT DIRECTORS DISCRETION.

5/13/2026
 JOSHUA PALMER, P.E.
 COUNTY ENGINEER / ECM ADMINISTRATOR

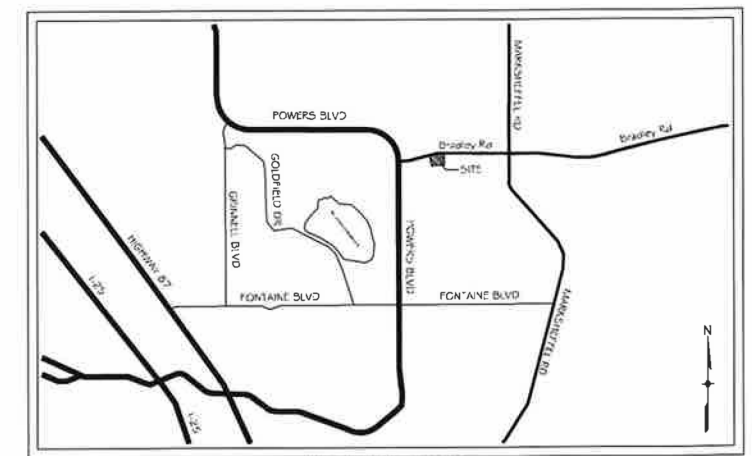


SITE MAP
 1" = 200'

NODE	FIRE FLOW (GPM)	PSI @ MDD
A	2219.65	26.5
B	2218.71	26.8
C	2216.06	25.3
D	2217.82	24.6
E	2217.00	23.1
F	2215.31	24.5
G	2216.26	24.5
H	2217.93	29.0

NOTE: FIRE FLOW AND PRESSURE VALUES ARE PROVIDED BY WIDEFIELD DISTRICT ENGINEERING CONSULTANT BASED ON LATEST WATER MODELING.

THE LOCATIONS OF EXISTING ABOVE GROUND AND UNDERGROUND UTILITIES ARE SHOWN IN AN APPROXIMATE WAY ONLY. THE CONTRACTOR SHALL DETERMINE THE EXACT LOCATION OF ALL EXISTING UTILITIES BEFORE COMMENCING WORK. THE CONTRACTOR SHALL BE FULLY RESPONSIBLE FOR ANY AND ALL DAMAGES WHICH MIGHT BE CAUSED BY HIS FAILURE TO EXACTLY LOCATE AND PRESERVE ANY AND ALL ABOVE GROUND AND UNDERGROUND UTILITIES.



VICINITY MAP
 N.T.S.

FIRE AUTHORITY APPROVAL
 THE NUMBER OF FIRE HYDRANTS AND HYDRANT LOCATIONS SHOWN ON THIS WATER INSTALLATION PLAN ARE CORRECT AND ADEQUATE TO SATISFY THE FIRE PROTECTION REQUIREMENTS AS SPECIFIED BY THE FIRE DISTRICT SERVING THE PROPERTY NOTED ON THE PLANS

FIRE PROTECTION DISTRICT Security Fire Protection Dist
 SIGNED [Signature] DATE 6-11-21
 FIRE PROTECTION DISTRICT

DISTRICT APPROVALS:
 THE WIDEFIELD WATER AND SANITATION DISTRICT RECOGNIZES THE DESIGN ENGINEER AS HAVING RESPONSIBILITY FOR THE DESIGN AND HAS LIMITED ITS SCOPE OF REVIEW ACCORDINGLY.

WIDEFIELD WATER AND SANITATION DISTRICT
 WATER DESIGN APPROVAL
 DATE: 10-06-2025 BY: Robert K Bannister
 PROJECT NUMBER: _____

IN CASE OF ERRORS OR OMISSIONS WITH THE WATER DESIGN AS SHOWN ON THIS DOCUMENT THE STANDARDS AS DEFINED IN THE "RULES AND REGULATIONS FOR INSTALLATION OF WATER MAINS AND SERVICES" SHALL RULE.

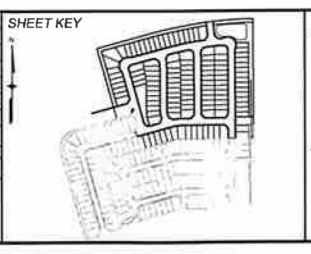
APPROVAL EXPIRES 180 DAYS FROM DESIGN APPROVAL

WATER AND SANITARY SEWER APPROVAL
 ANY CHANGES OR ALTERATIONS AFFECTING THE GRADE, ALIGNMENT, ELEVATION, AND/OR DEPTH OF COVER OF ANY WATER OR SEWER MAINS OR OTHER APPURTENANCE SHOWN ON THIS DRAWING SHALL BE THE RESPONSIBILITY OF THE OWNER/DEVELOPER. THE OWNER/DEVELOPER SHALL BE RESPONSIBLE FOR ALL OPERATION DAMAGES AND DEFECTS IN INSTALLATION AND MATERIAL FOR MAINS AND SERVICES FROM THE DATE OF APPROVAL UNTIL FINAL ACCEPTANCE IS ISSUED.

SIGNED _____ DATE 10/30/25
 OWNER/DEVELOPER
 PRINT NAME Richard A. van Seenus
 DBA COLA LLC
 ADDRESS 555 Middle Creek Parkway #500
Colorado Springs, CO 80921

REFERENCE DRAWINGS	DESCRIPTION	CW	BY
1	10/14/2022 SHORTENED WATER SERVICES TO PROPERTY LINE		
No.	DATE	DESCRIPTION	REVISIONS

COMPUTER FILE MANAGEMENT
 FILE NAME: s:\21.886.038 (trails)100 Dwg\104 plan sets\construction plans\utility plans\water plan\TS01.dwg
 CTB FILE: Matrix(black).ctb
 PLOT DATE: July 28, 2025 9:42:34 AM
 THIS DRAWING IS CURRENT AS OF PLOT DATE AND MAY BE SUBJECT TO CHANGE



BENCHMARK
 COLORADO SPRINGS UTILITIES (FMS) MONUMENT F206
 A BERTNSEN TOP SECURITY MONUMENT SYSTEM WITH A 3.5-INCH DIAMETER ALUMINUM CAP IN A ROAD BOX, LOCATED ON THE NORTHWEST CORNER OF FONTAINE BOULEVARD AND POWERS BOULEVARD.
 ELEVATION - 5897.88' U.S. SURVEY FT

BASIS OF BEARING
 BEARINGS ARE BASED ON THE NORTH LINE OF THE NORTHWEST QUARTER OF SECTION 9, TOWNSHIP 15 SOUTH, RANGE 65 WEST OF THE 6TH P.M. SAID LINE BEARS S89°51'23"E FROM THE NORTHWEST CORNER OF SAID SECTION 9 (2 1/2' AULM. CAP PLS 17664) TO THE N 1/4 CORNER OF SAID SECTION 9 (3 1/2' AULM. CAP PLS 10377)

PREPARED BY:



TRAILS AT ASPEN RIDGE
 FILING NO. 4
 PUBLIC WATERLINE PLANS
 TITLE SHEET

DESIGNED BY: JSE
 DRAWN BY: JSE
 CHECKED BY: NMS

SCALE: HORIZ. N/A
 VERT. N/A

DATE ISSUED: JULY, 2025
 SHEET: 1 OF 12

DRAWING No. TS01



Know what's below. Call before you dig.

WIDEFIELD WATER AND SANITATION DISTRICT GENERAL NOTES

- ALL UTILITY CONSTRUCTION TO BE CONDUCTED IN CONFORMANCE WITH THE CURRENT WIDEFIELD WATER AND SANITATION DISTRICT SPECIFICATIONS. COMPACTION REQUIREMENTS SHALL BE 95% STANDARD PROCTOR AS DETERMINED BY ASTM D698, UNLESS OTHERWISE APPROVED BY THE WIDEFIELD WATER AND SANITATION DISTRICT OR A HIGHER STANDARD IS IMPOSED BY ANOTHER AGENCY HAVING RIGHT-OF-WAY JURISDICTION.
- ALL MATERIALS AND WORKMANSHIP SHALL BE SUBJECT TO INSPECTION BY THE WIDEFIELD WATER AND SANITATION DISTRICT. THE WIDEFIELD WATER AND SANITATION DISTRICT RESERVES THE RIGHT TO ACCEPT OR REJECT ANY SUCH MATERIALS AND WORKMANSHIP THAT DOES NOT CONFORM TO ITS STANDARDS AND SPECIFICATIONS.
- THE DEVELOPER OR HIS ENGINEER HAS LOCATED ALL FIRE HYDRANTS AND FUTURE SERVICE STUBS. ANY REQUIRED REALIGNMENT, EITHER HORIZONTAL OR VERTICAL, SHALL BE AT THE EXPENSE OF THE DEVELOPER.
- ALL DUCTILE IRON PIPE, TO INCLUDE FITTINGS, VALVES AND FIRE HYDRANTS WILL BE WRAPPED WITH POLYETHYLENE TUBING, AND ELECTRICALLY ISOLATED.
- ALL DUCTILE IRON PIPE AND FITTINGS SHALL BE DOUBLE BONDED. SPECIFICATIONS FOR CATHODIC PROTECTION ON BOTH DIP MAINS AND PVC MAINS IS SPECIFIED IN THE STANDARDS AND SPECIFICATIONS.
- PVC MAIN LINES SHALL BE INSTALLED WITH COATED NO. 12 TRACER WIRE.
- THE CONTRACTOR IS REQUIRED TO NOTIFY THE WIDEFIELD WATER AND SANITATION DISTRICT (390-7111) A MINIMUM OF 48 HOURS AND A MAXIMUM OF 96 HOURS PRIOR TO THE START OF CONSTRUCTION. THE CONTRACTOR SHALL ALSO NOTIFY AFFECTED UTILITY COMPANIES 48 HOURS PRIOR TO CONSTRUCTION ADJACENT TO THE KNOWN UTILITY LINES.
- THE LOCATION OF ALL UTILITIES AS SHOWN ON THESE DRAWINGS ARE APPROXIMATE ONLY. THE LOCATION OF ALL UTILITIES SHALL BE VERIFIED PRIOR TO CONSTRUCTION BY THE CONTRACTOR.
- THE CONTRACTOR SHALL FIELD EXCAVATE AND VERIFY THE VERTICAL AND HORIZONTAL LOCATION OF ALL TIE-INS. CONTRACTOR SHALL NOTIFY THE WIDEFIELD WATER AND SANITATION DISTRICT AND THE ENGINEER OF THE FIELD VERIFIED INFORMATION PRIOR TO CONSTRUCTION.
- ALL BENDS SHALL BE FIELD STAKED PRIOR TO CONSTRUCTION.
- ANY WATER UTILITY MATERIAL REMOVED AND NOT REUSED SHALL BE RETURNED TO THE WIDEFIELD WATER AND SANITATION DISTRICT IF THE DISTRICT SO REQUESTS.
- THE CONTRACTOR SHALL AT HIS EXPENSE SUPPORT AND PROTECT ALL UTILITY MAINS SO THAT THEY WILL FUNCTION CONTINUOUSLY DURING CONSTRUCTION. SHOULD A UTILITY MAIN FAIL AS A RESULT OF THE CONTRACTOR'S OPERATION, IT WILL BE REPLACED IMMEDIATELY BY EITHER THE CONTRACTOR OR THE WIDEFIELD WATER AND SANITATION DISTRICT AT FULL COST OF LABOR AND MATERIALS TO THE CONTRACTOR.
- ANY PUMPING OR BYPASS OPERATIONS MUST BE REVIEWED AND APPROVED PRIOR TO EXECUTION BY BOTH THE WIDEFIELD WATER AND SANITATION DISTRICT AND THE ENGINEER.
- CONTRACTOR MUST REPLACE OR REPAIR ANY DAMAGE TO ALL SURFACE IMPROVEMENTS, INCLUDING BUT NOT LIMITED TO FENCES, CURB AND GUTTER AND/OR ASPHALT THAT MAY BE CAUSED DURING CONSTRUCTION.
- ALL WATER LINES 6" AND LARGER, AND ALL SEWER LINES 8" AND LARGER, SHALL HAVE AS "AS-BUILT" PLANS PREPARED AND APPROVED PRIOR TO FINAL ACCEPTANCE BY THE WIDEFIELD WATER AND SANITATION DISTRICT.
- PRIOR TO CONSTRUCTION, A PRE-CONSTRUCTION CONFERENCE IS REQUIRED A MINIMUM OF 72 HOURS IN ADVANCE OF COMMENCEMENT OF WORK. TO SET THE PRE-CONSTRUCTION CONFERENCE, CONTACT ROB BANNISTER, DISTRICT ENGINEER AT (719) 390-7111 OF THE WIDEFIELD WATER AND SANITATION DISTRICT FOR A TIME. NO PRE-CONSTRUCTION CONFERENCE TIMES WILL BE SET UNTIL 4 SETS OF SIGNED DRAWINGS ARE RECEIVED BY THE WIDEFIELD W & S DISTRICT. PRE-CONSTRUCTION DATE/INITIALS _____.
- DEVELOPER IS RESPONSIBLE FOR INSTALLING WATERLINE THROUGH FRONTSIDE DRIVE NO MORE THAN 18 MONTHS AFTER CONSTRUCTION OF TRAILS AT ASPEN RIDGE FILING 4 TO PROVIDE WATER LOOPING.

ABBREVIATIONS

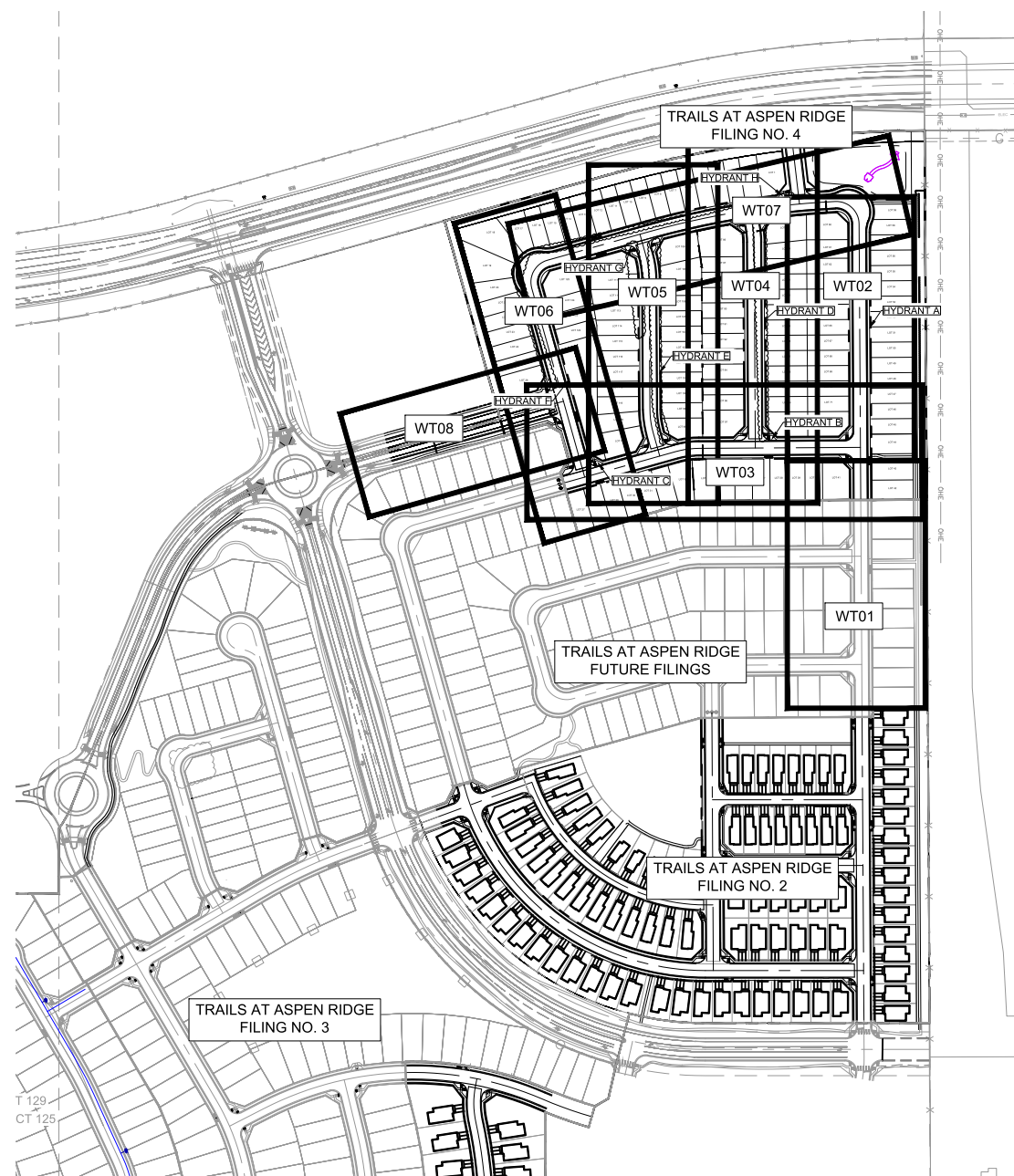
ASSY	ASSEMBLY
BOF	BOTTOM OF PIPE
BOV	BLOWOFF ASSEMBLY AND VALVE
CPLG	COUPLING
(INS.)	(INSULATING)
(RED.)	(REDUCING)
(STR.)	(STRAIGHT)
CRA	CONCRETE REVERSE ANCHOR
CTRB	CONCRETE THRUST REACTION BLOCK
DEFL	DEFLECT
DIP	DUCTILE IRON PIPE
EL	ELEVATION
EX	EXISTING
FLG	FLANGE
FH	FIRE HYDRANT
GPM	GALLONS PER MINUTE
GRD BRK	V.P.I. GRADE BREAK
HYD ASSY	INCLUDES FIRE HYDRANT, LATERAL, VALVE, TIE RODS, AND REVERSE ANCHOR.
INV	INVERT
LT	LEFT OF CENTER LINE
MIN	MINIMUM
MJ	MECHANICAL JOINT
N,S,E,W	NORTH,SOUTH,EAST,WEST
PL	PROPERTY LINE
PSI	POUNDS PER SQUARE INCH
PVC	POLYVINYL CHLORIDE PIPE
RCP	REINFORCED CONCRETE PIPE
RED	REDUCER
RSNTS	RSJ RESTRAINT (i.e. MEGALUG)
RT	RIGHT OF CENTER LINE
SJ	SLIP JOINT
SS	SANITARY SEWER
STA	STATION
STS	STORM SEWER
TYP	TYPICAL
WL	WATER LINE

LEGEND

	VALVE (PROPOSED)
	VALVE (EXISTING)
	BLOWOFF (PROPOSED)
	BLOWOFF (EXISTING)
	PLUG (PROPOSED)
	PLUG (EXISTING)
	EXISTING FIRE HYDRANT
	PROPOSED FIRE HYDRANT
	PROPERTY LINE
	CURB LINE
	EXISTING GAS MAIN
	EXISTING WATER
	PROPOSED WATER (8")
	PROPOSED WATER (12")
	PROPOSED WATER (16")
	EXISTING STORM DRAIN
	PROPOSED STORM DRAIN
	EXISTING SAN. SEWER
	PROPOSED SAN. SEWER
	EXISTING MANHOLE
	PROPOSED MANHOLE
	MATCHLINE

EL PASO COUNTY STANDARD CONSTRUCTION NOTES:

- ALL DRAINAGE AND ROADWAY CONSTRUCTION SHALL MEET THE STANDARDS AND SPECIFICATIONS OF THE CITY OF COLORADO SPRINGS/EL PASO COUNTY DRAINAGE CRITERIA MANUAL, VOLUMES 1 AND 2, AND THE EL PASO COUNTY ENGINEERING CRITERIA MANUAL.
- CONTRACTOR SHALL BE RESPONSIBLE FOR THE NOTIFICATION AND FIELD NOTIFICATION OF ALL EXISTING UTILITIES, WHETHER SHOWN ON THE PLANS OR NOT, BEFORE BEGINNING CONSTRUCTION. LOCATION OF EXISTING UTILITIES SHALL BE VERIFIED BY THE CONTRACTOR PRIOR TO CONSTRUCTION. CALL 811 TO CONTACT THE UTILITY NOTIFICATION CENTER OF COLORADO (UNCC).
- CONTRACTOR SHALL KEEP A COPY OF THESE APPROVED PLANS, THE GRADING AND EROSION CONTROL PLAN, THE STORMWATER MANAGEMENT PLAN (SWMP), THE SOILS AND GEOTECHNICAL REPORT, AND THE APPROPRIATE DESIGN AND CONSTRUCTION STANDARDS AND SPECIFICATIONS AT THE JOB SITE AT ALL TIMES, INCLUDING THE FOLLOWING:
 - EL PASO COUNTY ENGINEERING CRITERIA MANUAL (ECM)
 - CITY OF COLORADO SPRINGS/EL PASO COUNTY DRAINAGE CRITERIA MANUAL, VOLUMES 1 AND 2
 - COLORADO DEPARTMENT OF TRANSPORTATION (CDOT) STANDARD SPECIFICATIONS FOR ROAD AND BRIDGE CONSTRUCTION
 - CDOT M & S STANDARDS
- NOTWITHSTANDING ANYTHING DEPICTED IN THESE PLANS IN WORDS OR GRAPHIC REPRESENTATION, ALL DESIGN AND CONSTRUCTION RELATED TO ROADS, STORM DRAINAGE AND EROSION CONTROL SHALL CONFORM TO THE STANDARDS AND REQUIREMENTS OF THE MOST RECENT VERSION OF THE RELEVANT ADOPTED EL PASO COUNTY STANDARDS, INCLUDING THE LAND DEVELOPMENT CODE, THE ENGINEERING CRITERIA MANUAL, THE DRAINAGE CRITERIA MANUAL, AND THE DRAINAGE CRITERIA MANUAL VOLUME 2. ANY DEVIATIONS FROM REGULATIONS AND STANDARDS MUST BE REQUESTED, AND APPROVED, IN WRITING. ANY MODIFICATIONS NECESSARY TO MEET CRITERIA AFTER-THE-FACT WILL BE ENTIRELY THE DEVELOPER'S RESPONSIBILITY TO RECTIFY.
- IT IS THE DESIGN ENGINEER'S RESPONSIBILITY TO ACCURATELY SHOW EXISTING CONDITIONS, BOTH ONSITE AND OFFSITE, ON THE CONSTRUCTION PLANS. ANY MODIFICATIONS NECESSARY DUE TO CONFLICTS, OMISSIONS, OR CHANGED CONDITIONS WILL BE ENTIRELY THE DEVELOPER'S RESPONSIBILITY TO RECTIFY.
- CONTRACTOR SHALL SCHEDULE A PRE-CONSTRUCTION MEETING WITH EL PASO COUNTY PLANNING AND COMMUNITY DEVELOPMENT (PCD) - INSPECTIONS, PRIOR TO STARTING CONSTRUCTION.
- IT IS THE CONTRACTOR'S RESPONSIBILITY TO UNDERSTAND THE REQUIREMENTS OF ALL JURISDICTIONAL AGENCIES AND TO OBTAIN ALL REQUIRED PERMITS, INCLUDING BUT NOT LIMITED TO EL PASO COUNTY EROSION AND STORMWATER QUALITY CONTROL PERMIT (ESQCP), REGIONAL BUILDING FLOODPLAIN DEVELOPMENT PERMIT, U.S. ARMY CORPS OF ENGINEERS-ISSUED 401 AND/OR 404 PERMITS, AND COUNTY AND STATE FUGITIVE DUST PERMITS.
- CONTRACTOR SHALL NOT DEVIATE FROM THE PLANS WITHOUT FIRST OBTAINING WRITTEN APPROVAL FROM THE DESIGN ENGINEER AND PCD. CONTRACTOR SHALL NOTIFY THE DESIGN ENGINEER IMMEDIATELY UPON DISCOVERY OF ANY ERRORS OR INCONSISTENCIES.
- ALL STORM DRAIN PIPE SHALL BE CLASS III RCP UNLESS OTHERWISE NOTED AND APPROVED BY PCD.
- CONTRACTOR SHALL COORDINATE GEOTECHNICAL TESTING PER ECM STANDARDS. PAVEMENT DESIGN SHALL BE APPROVED BY EL PASO COUNTY PCD PRIOR TO PLACEMENT OF CURB AND GUTTER AND PAVEMENT.
- ALL CONSTRUCTION TRAFFIC MUST ENTER/EXIT THE SITE AT APPROVED CONSTRUCTION ACCESS POINTS.
- SIGHT VISIBILITY TRIANGLES AS IDENTIFIED IN THE PLANS SHALL BE PROVIDED AT ALL INTERSECTIONS. OBSTRUCTIONS GREATER THAN 18 INCHES ABOVE FLOWLINE ARE NOT ALLOWED WITHIN SIGHT TRIANGLES.
- SIGNING AND STRIPING SHALL COMPLY WITH EL PASO COUNTY DOT AND MUTCD CRITERIA. (IF APPLICABLE, ADDITIONAL SIGNING AND STRIPING NOTES WILL BE PROVIDED.)
- CONTRACTOR SHALL OBTAIN ANY PERMITS REQUIRED BY EL PASO COUNTY DOT, INCLUDING WORK WITHIN THE RIGHT-OF-WAY AND SPECIAL TRANSPORT PERMITS.
- THE LIMITS OF CONSTRUCTION SHALL REMAIN WITHIN THE PROPERTY LINE UNLESS OTHERWISE NOTED. THE OWNER/DEVELOPER SHALL OBTAIN WRITTEN PERMISSION AND EASEMENTS, WHERE REQUIRED, FROM ADJOINING PROPERTY OWNER(S) PRIOR TO ANY OFF-SITE DISTURBANCE, GRADING, OR CONSTRUCTION.



OVERALL LAYOUT AND SHEET INDEX

SCALE: 1" = 100'

UTILITY CROSSING DETAILS				
CROSSING #	N & E	TOP OF PIPE	BTM OF PIPE	VERT. SEP.
1	N 7955.58 E 14019.11	24" RCP 5882.79	8" PVC WATER 5884.30	1.51'
2	N 7729.32 E 13979.87	8" PVC WATER 5869.18	18" RCP 5871.76	2.58'
3	N 7729.50 E 13999.41	8" PVC WATER 5869.18	24" RCP 5870.72	1.54'
4	N 7729.56 E 14010.48	8" PVC SAN 5668.48	8" PVC WATER 5873.02	4.54'
5	N 7976.50 E 13968.90	24" RCP 5883.60	8" PVC WATER 5885.17	1.57'
6	N 7976.69 E 13998.42	8" PVC WATER 5879.80	30" RCP 5881.38	1.58'
7	N 7976.74 E 14008.98	8" PVC SAN 5670.69	8" PVC WATER 5883.13	12.44'
8	N 7955.58 E 14019.11	24" RCP 5882.79	8" PVC WATER 5884.3	1.51'
9	N 8156.91 E 13375.46	8" PVC SANITARY 5889.40	8" PVC WATER 5895.90	6.50'
10	N 8204.94 E 13546.70	8" PVC SANITARY 5894.12	8" PVC WATER 5887.64	6.47'
11	N 8217.99 E 13594.59	8" PVC WATER 5893.85	30" RCP STORM 5892.34	1.51'
12	N 8223.77 E 13767.48	8" PVC SANITARY 5877.12	8" PVC WATER 5891.98	14.86'
13	N 8224.67 E 13915.84	8" PVC WATER 5890.37	24" RCP STORM 5891.88	1.51'
14	N 8225.22 E 14007.48	8" PVC SANITARY 5872.19	8" PVC WATER 5891.12	18.93'
15	N 8758.73 E 13765.80	8" PVC SANITARY 5880.34	8" PVC WATER 5888.74	8.40'
16	N 8704.11 E 13512.49	8" PVC SANITARY 5891.60	8" PVC WATER 5898.29	6.68'
17	N 8641.09 E 13287.58	8" PVC SANITARY 5898.76	8" PVC WATER 5906.56	7.80'
18	N 8771.03 E 13877.55	8" PVC WATER 5883.05	18" RCP STORM 5884.55	1.51'
19	N 8768.56 E 13993.31	8" PVC WATER 5881.45	18" RCP STORM 5882.97	1.51'
20	N 8330.13 E 13326.92	8" PVC SANITARY 5893.97	8" PVC WATER 5900.08	6.11'

THE WIDEFIELD WATER AND SANITATION DISTRICT RECOGNIZES THE DESIGN ENGINEER AS HAVING RESPONSIBILITY FOR THE DESIGN AND HAS LIMITED ITS SCOPE OF REVIEW ACCORDINGLY.

WIDEFIELD WATER AND SANITATION DISTRICT WATER DESIGN APPROVAL

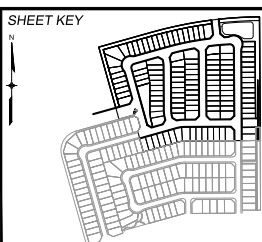
DATE: _____ BY: _____

PROJECT NUMBER: _____

IN CASE OF ERRORS OR OMISSIONS WITH THE WATER DESIGN AS SHOWN ON THIS DOCUMENT THE STANDARDS AS DEFINED IN THE "RULES AND REGULATIONS FOR INSTALLATION OF WATER MAINS AND SERVICES" SHALL RULE.

APPROVAL EXPIRES 180 DAYS FROM DESIGN APPROVAL

REFERENCE DRAWINGS	NO.	DATE	DESCRIPTION	BY
	1	10/14/2022	SHORTENED WATER SERVICES TO PROPERTY LINE	CWV
COMPUTER FILE MANAGEMENT				
FILE NAME: s:\21.886.038 (trails f6)\100 Dwg\104 plan sets\construction plans\utility plans\water plan\GN01.dwg				
CTB FILE: Matrix(black).ctb				
PLOT DATE: July 28, 2025 9:43:05 AM				
THIS DRAWING IS CURRENT AS OF PLOT DATE AND MAY BE SUBJECT TO CHANGE.				



BENCHMARK
 COLORADO SPRINGS UTILITIES (FIMS) MONUMENT F206
 A BERNTSEN TOP SECURITY MONUMENT SYSTEM WITH A 3.5-INCH DIAMETER ALUMINUM CAP IN A ROAD BOX, LOCATED ON THE NORTHWEST CORNER OF FONTAINE BOULEVARD AND POWERS BOULEVARD.
 ELEVATION - 5897.89' U.S. SURVEY FT

BASIS OF BEARING
 BEARINGS ARE BASED ON THE NORTH LINE OF THE NORTHWEST QUARTER OF SECTION 9, TOWNSHIP 15 SOUTH, RANGE 65 WEST OF THE 6TH P.M. SAID LINE BEARS S89°51'23"E FROM THE NORTHWEST CORNER OF SAID SECTION 9 (2 1/2' AULM. CAP PLS 17664) TO THE N 1/4 CORNER OF SAID SECTION 9 (3 1/2' AULM. CAP PLS 10377)

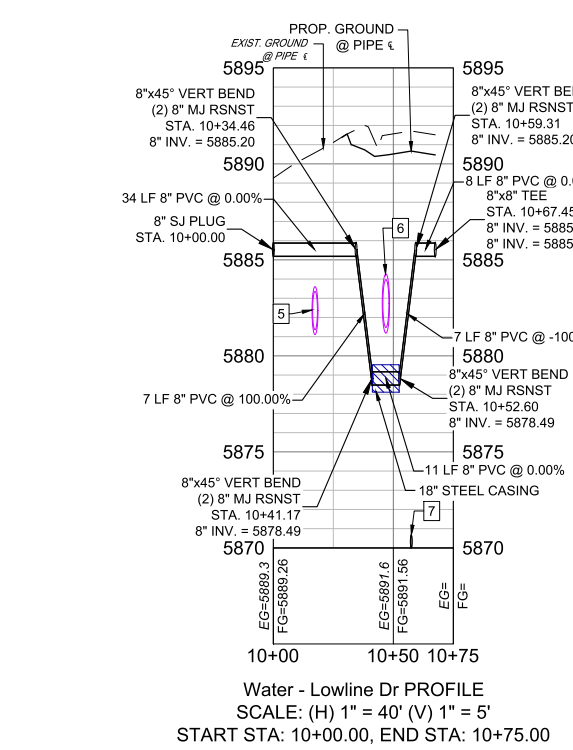
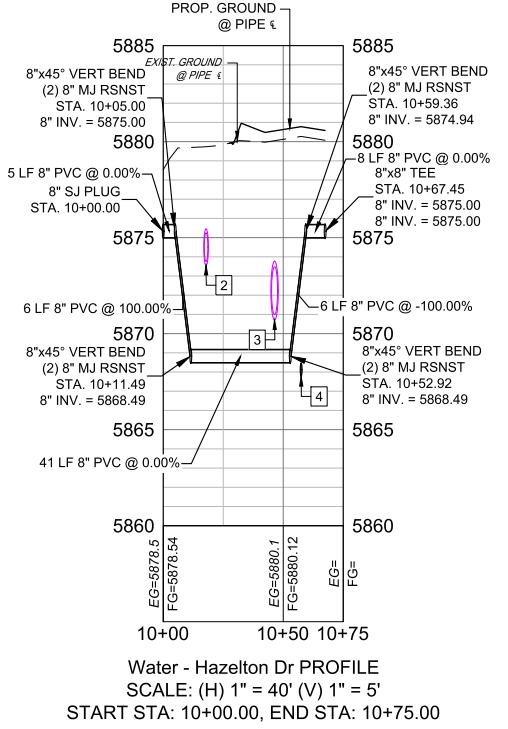
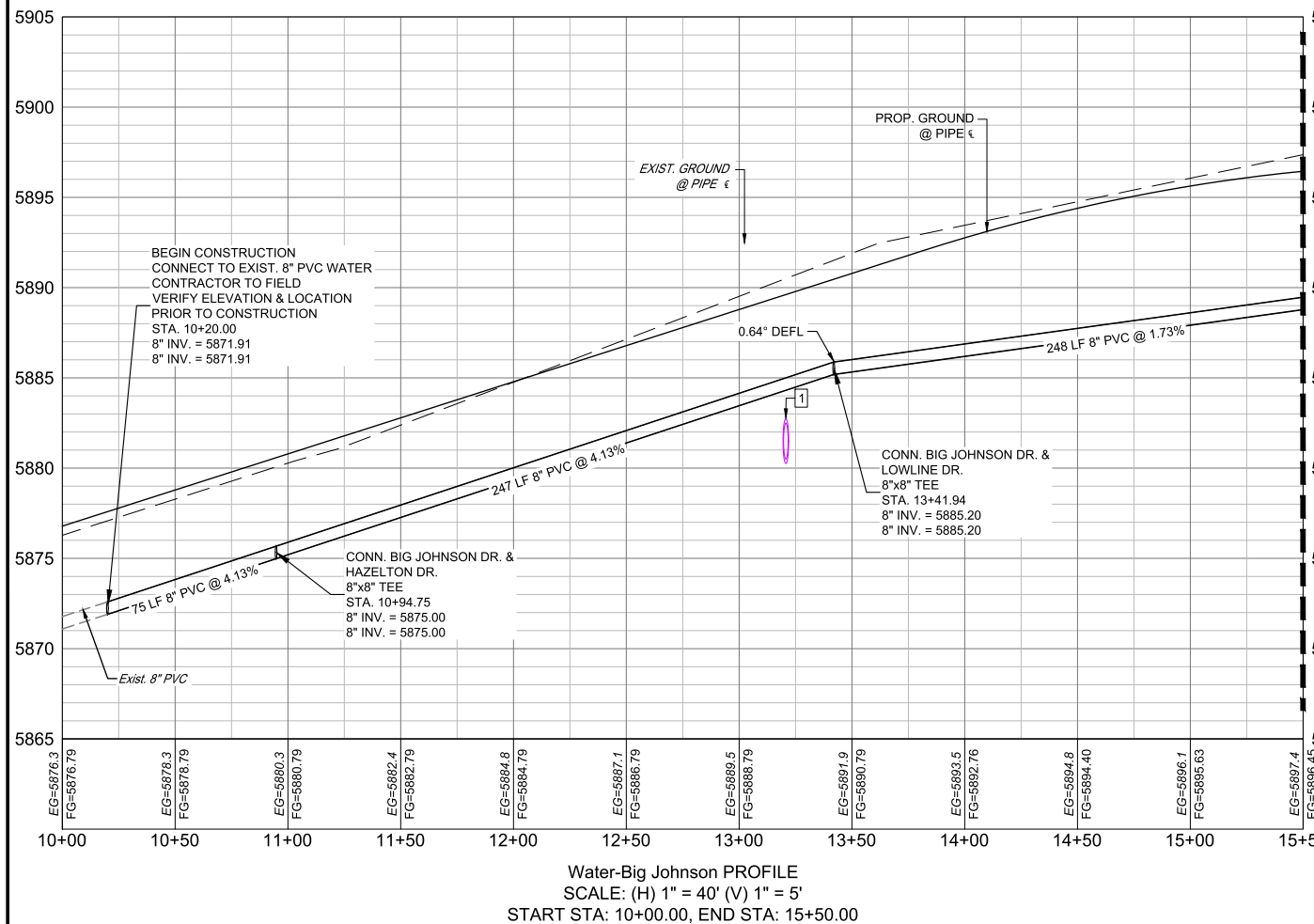
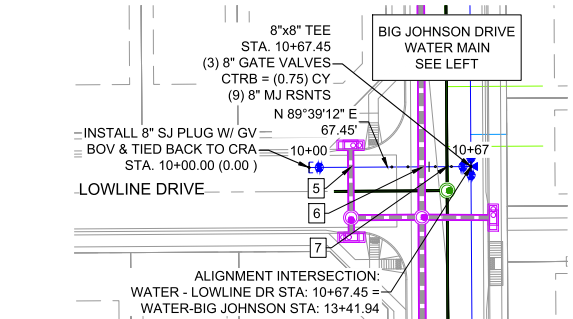
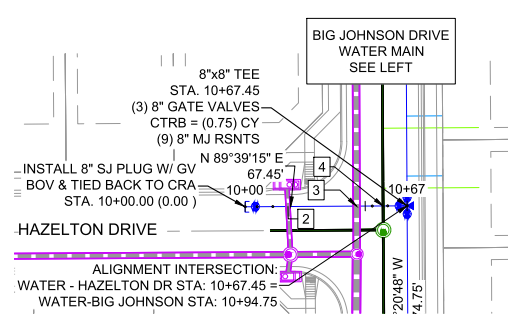
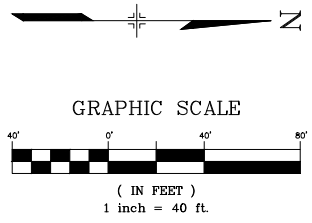
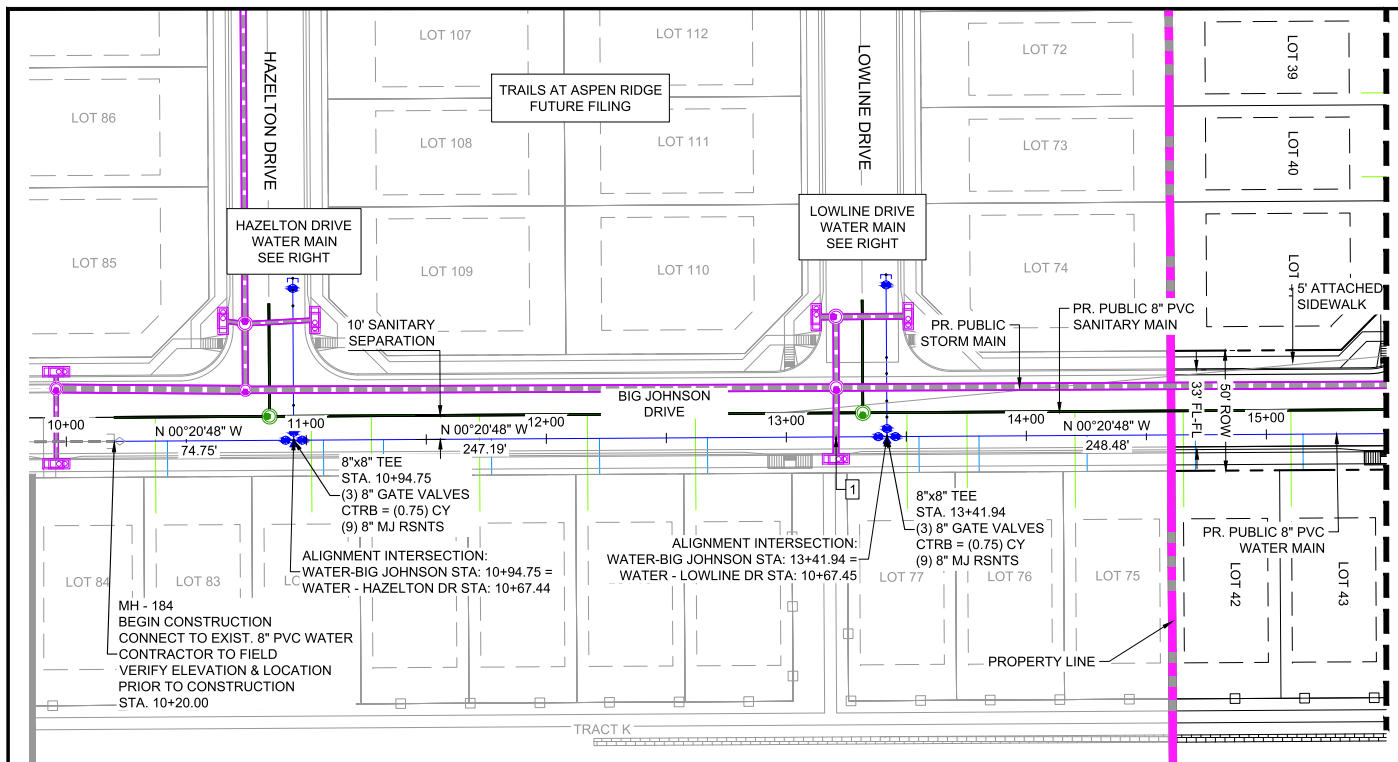
PREPARED BY:

SEAL

TRAILS AT ASPEN RIDGE				
FILING NO. 4 PUBLIC WATERLINE PLANS				
GENERAL NOTES, LEGEND, ABBREVIATIONS, & SHEET INDEX				
DESIGNED BY:	JSE	SCALE:	DATE ISSUED:	JULY, 2025
DRAWN BY:	JSE	HORIZ:	N/A	DRAWING No.
CHECKED BY:	NMS	VERT:	N/A	2 OF 12
				GN01



Know what's below. Call before you dig.



UTILITY CROSSING DETAILS				
CROSSING #	N & E	TOP OF PIPE	BTM OF PIPE	VERT. SEP.
1	N 7955.58 E 14019.11	24\"/>		

- NOTES:**
1. ALL DEFLECTIONS ARE ACHIEVED UTILIZING HIGH-DEFLECTION COUPLERS.
 2. WATER CROSSINGS REQUIRING SECONDARY CONTAINMENT SHALL BE IN ACCORDANCE WITH WIDEFIELD WATER STANDARDS DETAIL W-16.
 3. ALL WATER LOWERINGS SHALL BE BUILT IN ACCORDANCE WITH WIDEFIELD WATER STANDARDS DETAIL W-16.
 4. DEVELOPER IS RESPONSIBLE FOR INSTALLING WATERLINE THROUGH FRONTSIDE DRIVE NO MORE THAN 18 MONTHS AFTER CONSTRUCTION OF TRAILS AT ASPEN RIDGE FILING 4 TO PROVIDE WATER LOOPING.

THE LOCATIONS OF EXISTING ABOVE GROUND AND UNDERGROUND UTILITIES ARE SHOWN IN AN APPROXIMATE WAY ONLY. THE CONTRACTOR SHALL DETERMINE THE EXACT LOCATION OF ALL EXISTING UTILITIES BEFORE COMMENCING WORK. THE CONTRACTOR SHALL BE FULLY RESPONSIBLE FOR ANY AND ALL DAMAGES WHICH MIGHT BE CAUSED BY HIS FAILURE TO EXACTLY LOCATE AND PRESERVE ANY AND ALL ABOVE GROUND AND UNDERGROUND UTILITIES.

THE WIDEFIELD WATER AND SANITATION DISTRICT RECOGNIZES THE DESIGN ENGINEER AS HAVING RESPONSIBILITY FOR THE DESIGN AND HAS LIMITED ITS SCOPE OF REVIEW ACCORDINGLY.

**WIDEFIELD WATER AND SANITATION DISTRICT
WASTEWATER DESIGN APPROVAL**

DATE: _____ BY: _____

PROJECT NUMBER: _____

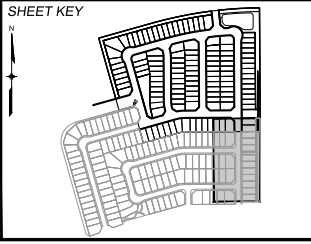
IN CASE OF ERRORS OR OMISSIONS WITH THE WATER DESIGN AS SHOWN ON THIS DOCUMENT THE STANDARDS AS DEFINED IN THE "RULES AND REGULATIONS FOR INSTALLATION OF WASTEWATER MAINS AND SERVICES" SHALL RULE.

APPROVAL EXPIRES 180 DAYS FROM DESIGN APPROVAL

REFERENCE DRAWINGS	NO.	DATE	DESCRIPTION	BY
	1	10/14/2022	SHORTENED WATER SERVICES TO PROPERTY LINE	CWV

COMPUTER FILE MANAGEMENT

FILE NAME: s:\21.886.038 (trails f6)\100 Dwg\104 plan sets\construction plans\utility plans\water plan\WT01.dwg
 CTB FILE: Matrix(black).ctb
 PLOT DATE: July 28, 2025 9:44:14 AM
 THIS DRAWING IS CURRENT AS OF PLOT DATE AND MAY BE SUBJECT TO CHANGE.



BENCHMARK
 COLORADO SPRINGS UTILITIES (FIMS) MONUMENT F206
 A BERTSEN TOP SECURITY MONUMENT SYSTEM WITH A 3.5-INCH DIAMETER ALUMINUM CAP IN A ROAD BOX, LOCATED ON THE NORTHWEST CORNER OF FONTAINE BOULEVARD AND POWERS BOULEVARD.
 ELEVATION - 5897.89' U.S. SURVEY FT

BASIS OF BEARING
 BEARINGS ARE BASED ON THE NORTH LINE OF THE NORTHWEST QUARTER OF SECTION 9, TOWNSHIP 15 SOUTH, RANGE 65 WEST OF THE 6TH P.M. SAID LINE BEARS S89°12'32\"/>



TRAILS AT ASPEN RIDGE

FILING NO. 4
PUBLIC WATERLINE PLANS

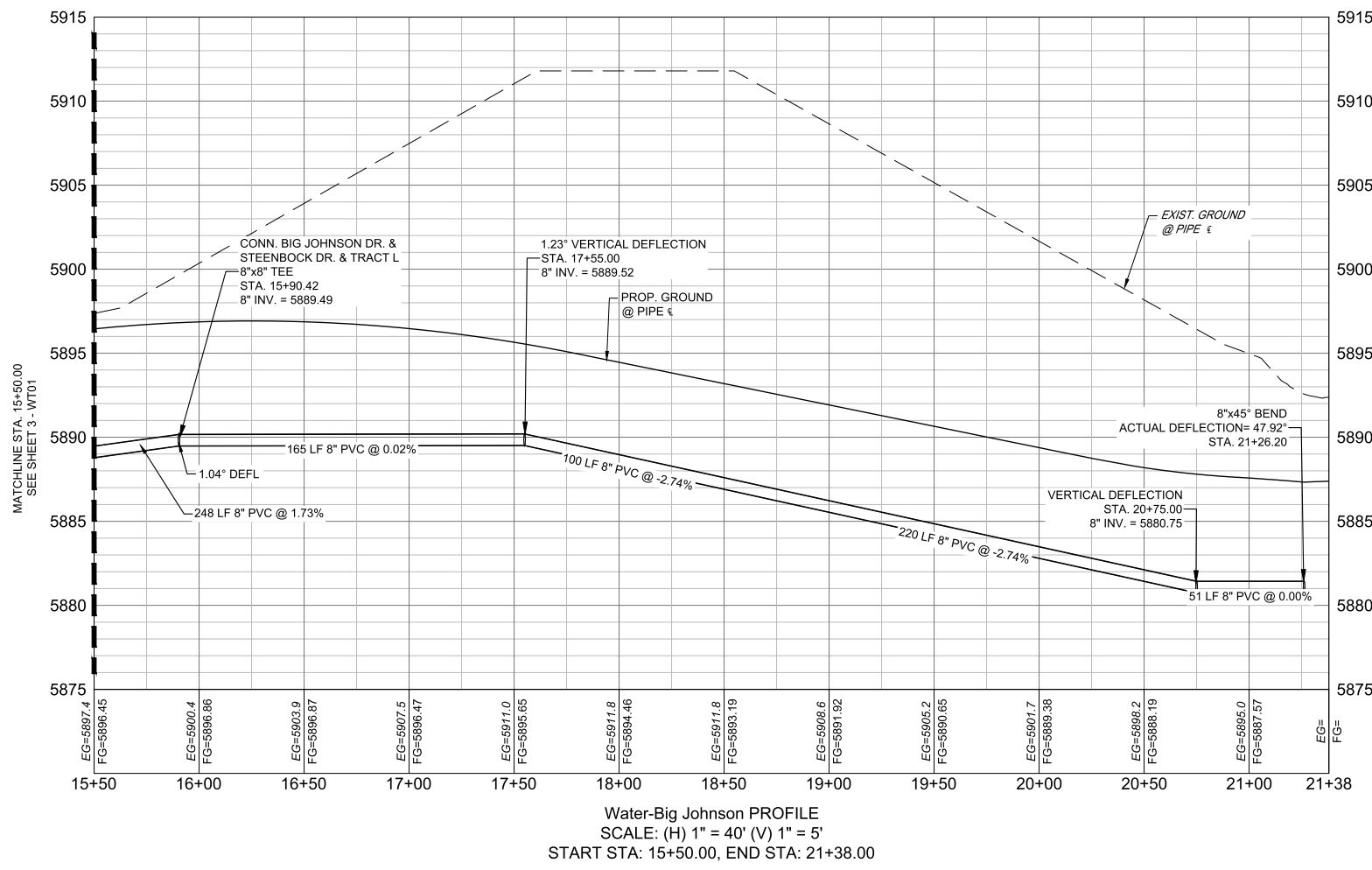
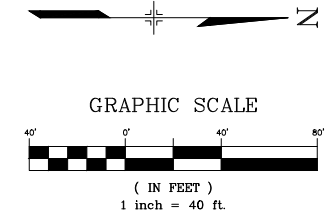
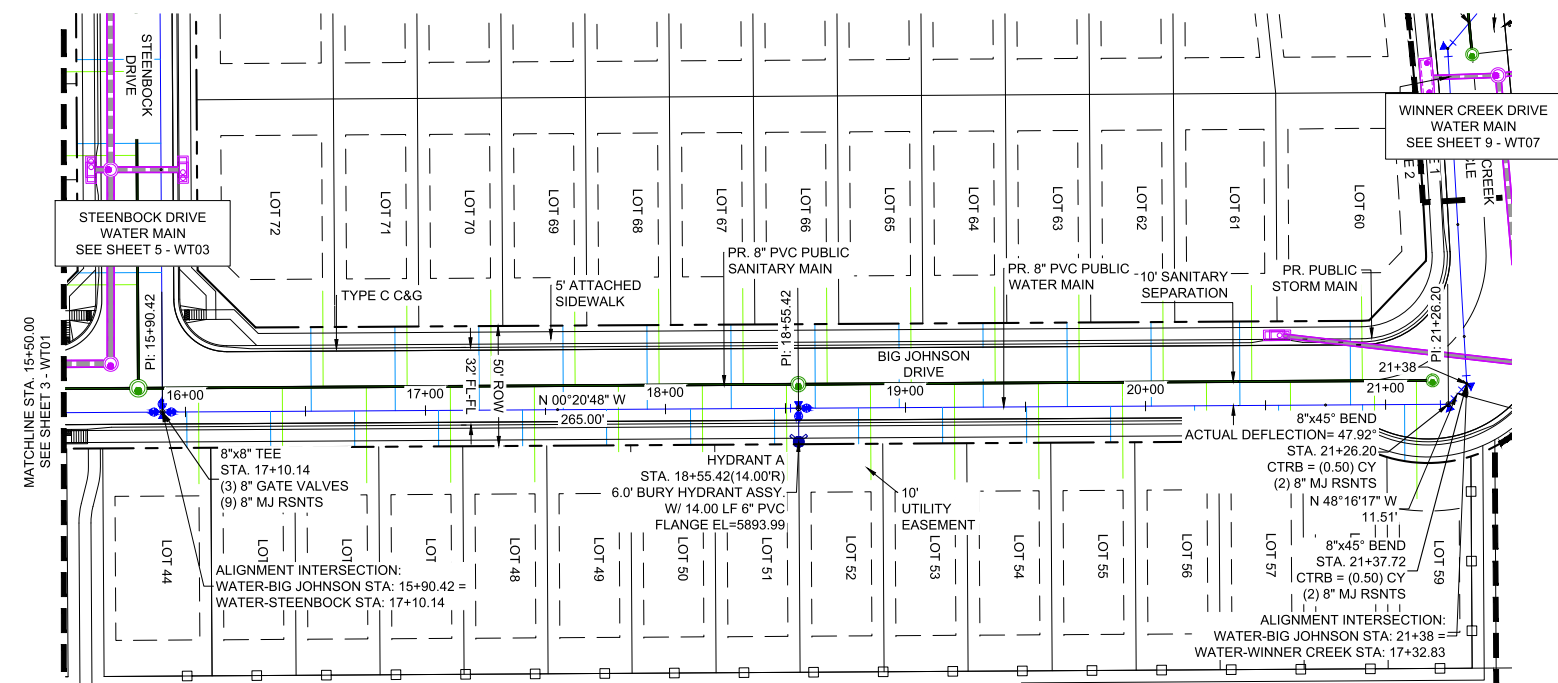
WATERLINE PLAN AND PROFILE

FOR AND ON BEHALF OF
MATRIX DESIGN GROUP, INC.
 PROJECT No. 21.886.038

DESIGNED BY: JSE SCALE: DATE ISSUED: JULY, 2025 DRAWING No.
 DRAWN BY: JSE HORIZ. 1" = 40' SHEET 3 OF 12 WT01
 CHECKED BY: NMS VERT. 1" = 5'



Know what's below.
Call before you dig.



- NOTES:**
- ALL DEFLECTIONS ARE ACHIEVED UTILIZING HIGH-DEFLECTION COUPLERS.
 - WATER CROSSINGS REQUIRING SECONDARY CONTAINMENT SHALL BE IN ACCORDANCE WITH WIDEFIELD WATER STANDARDS DETAIL W-16.
 - ALL WATER LOWERINGS SHALL BE BUILT IN ACCORDANCE WITH WIDEFIELD WATER STANDARDS DETAIL W-16.
 - DEVELOPER IS RESPONSIBLE FOR INSTALLING WATERLINE THROUGH FRONTSIDE DRIVE NO MORE THAN 18 MONTHS AFTER CONSTRUCTION OF TRAILS AT ASPEN RIDGE FILING 4 TO PROVIDE WATER LOOPING.

THE LOCATIONS OF EXISTING ABOVE GROUND AND UNDERGROUND UTILITIES ARE SHOWN IN AN APPROXIMATE WAY ONLY. THE CONTRACTOR SHALL DETERMINE THE EXACT LOCATION OF ALL EXISTING UTILITIES BEFORE COMMENCING WORK. THE CONTRACTOR SHALL BE FULLY RESPONSIBLE FOR ANY AND ALL DAMAGES WHICH MIGHT BE CAUSED BY HIS FAILURE TO EXACTLY LOCATE AND PRESERVE ANY AND ALL ABOVE GROUND AND UNDERGROUND UTILITIES.

THE WIDEFIELD WATER AND SANITATION DISTRICT RECOGNIZES THE DESIGN ENGINEER AS HAVING RESPONSIBILITY FOR THE DESIGN AND HAS LIMITED ITS SCOPE OF REVIEW ACCORDINGLY.

**WIDEFIELD WATER AND SANITATION DISTRICT
WASTEWATER DESIGN APPROVAL**

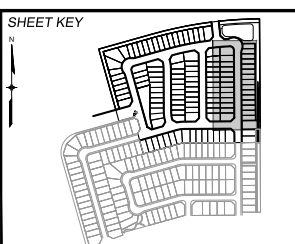
DATE: _____ BY: _____

PROJECT NUMBER: _____

IN CASE OF ERRORS OR OMISSIONS WITH THE WATER DESIGN AS SHOWN ON THIS DOCUMENT THE STANDARDS AS DEFINED IN THE "RULES AND REGULATIONS FOR INSTALLATION OF WASTEWATER MAINS AND SERVICES" SHALL RULE.

APPROVAL EXPIRES 180 DAYS FROM DESIGN APPROVAL

REFERENCE DRAWINGS	NO.	DATE	DESCRIPTION	BY
	1	10/14/2022	SHORTENED WATER SERVICES TO PROPERTY LINE	CWV
REVISIONS				
COMPUTER FILE MANAGEMENT				
FILE NAME: s:\21.886.038 (trails f6)\100 Dwg\104 plan sets\construction plans\utility plans\water plan\WT01.dwg				
CTB FILE: Matrix(black).ctb				
PLOT DATE: July 28, 2025 9:44:29 AM				
THIS DRAWING IS CURRENT AS OF PLOT DATE AND MAY BE SUBJECT TO CHANGE.				



BENCHMARK
COLORADO SPRINGS UTILITIES (FIMS) MONUMENT F206
A BERNTSEN TOP SECURITY MONUMENT SYSTEM WITH A 3.5-INCH DIAMETER ALUMINUM CAP IN A ROAD BOX, LOCATED ON THE NORTHWEST CORNER OF FONTAINE BOULEVARD AND POWERS BOULEVARD.
ELEVATION - 5897.89' U.S. SURVEY FT

BASIS OF BEARING
BEARINGS ARE BASED ON THE NORTH LINE OF THE NORTHWEST QUARTER OF SECTION 9, TOWNSHIP 15 SOUTH, RANGE 65 WEST OF THE 6TH P.M. SAID LINE BEARS S89°51'23"E FROM THE NORTHWEST CORNER OF SAID SECTION 9 (2 1/2' AULM. CAP PLS 17664) TO THE N 1/4 CORNER OF SAID SECTION 9 (3 1/2' AULM. CAP PLS 10377)



TRAILS AT ASPEN RIDGE

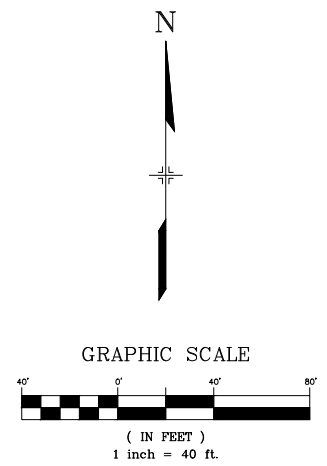
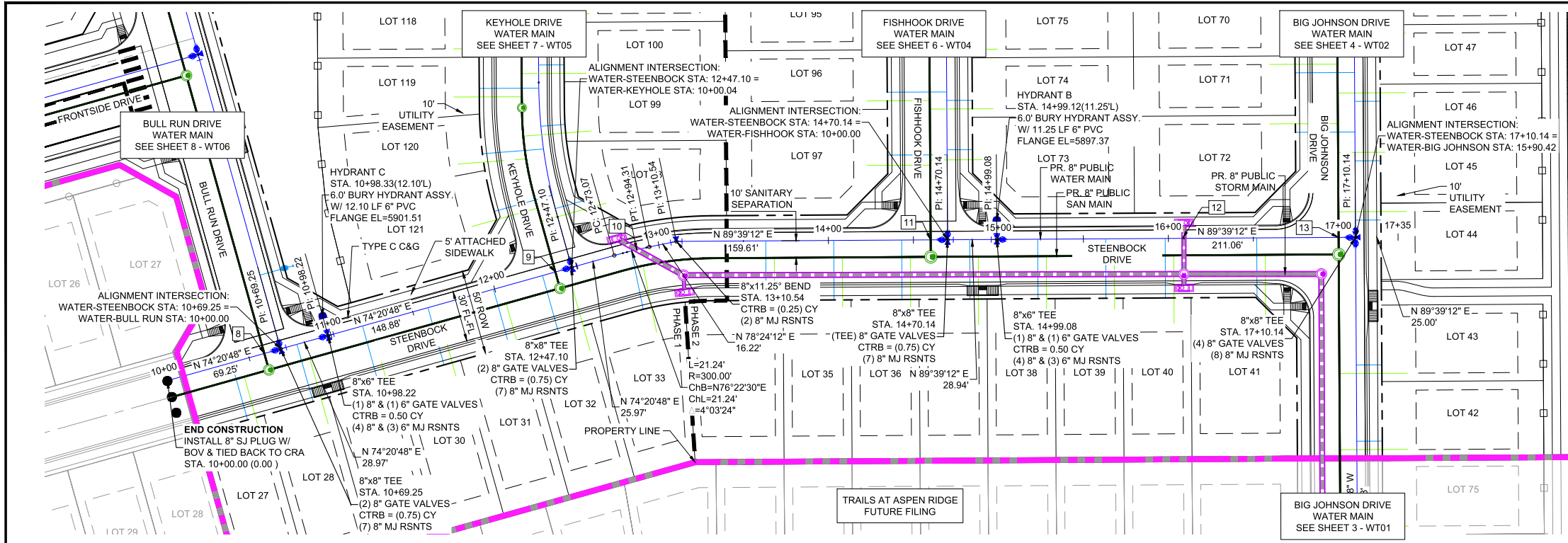
FILING NO. 4
PUBLIC WATERLINE PLANS

WATERLINE PLAN AND PROFILE

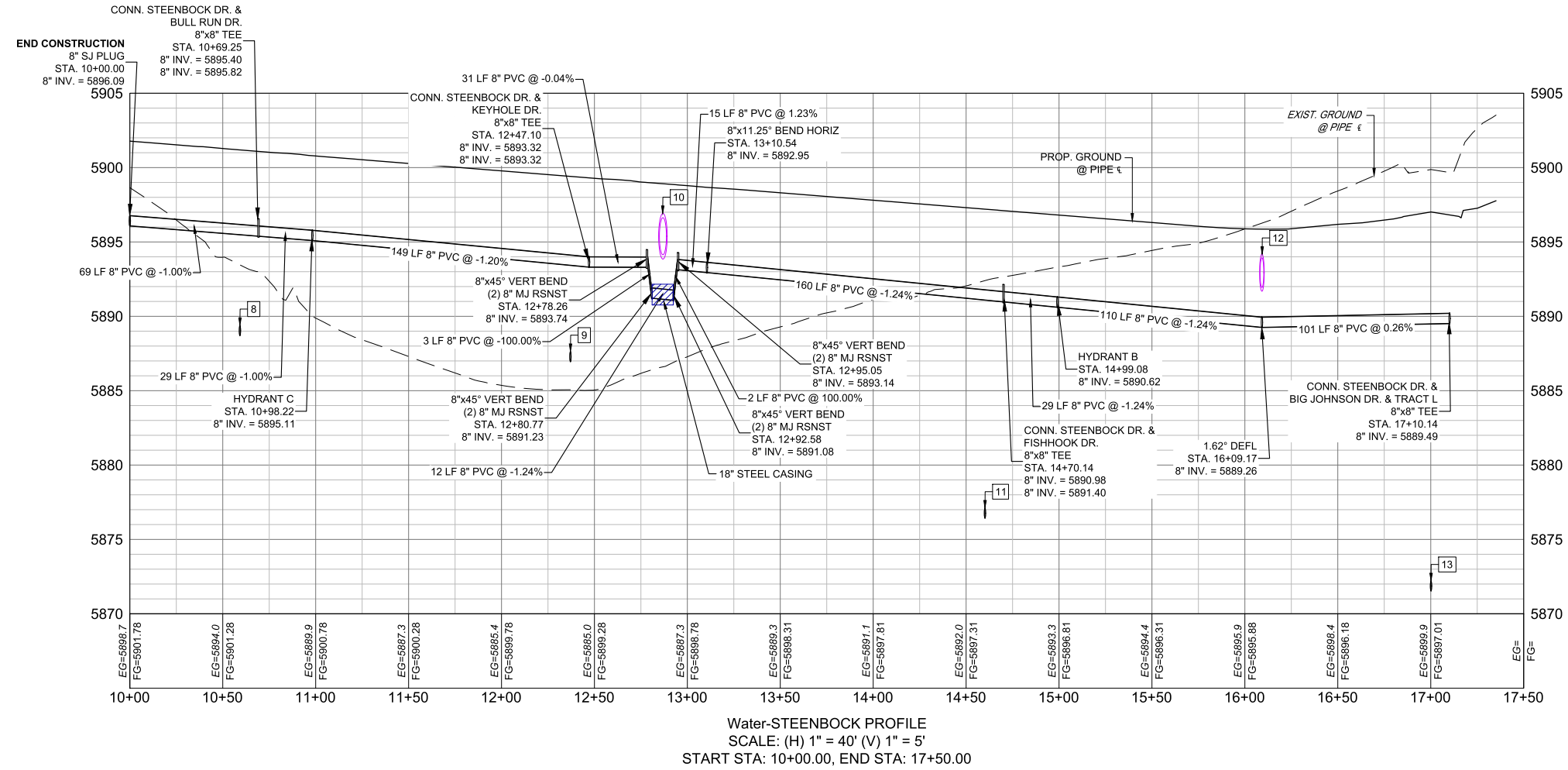
DESIGNED BY: JSE	SCALE: HORIZ 1" = 40'	DATE ISSUED: JULY, 2025	DRAWING No. WT02
DRAWN BY: JSE	VERT. 1" = 5'	SHEET 4 OF 12	
CHECKED BY: NMS			



Know what's below.
Call before you dig.



UTILITY CROSSING DETAILS				
CROSSING #	N & E	TOP OF PIPE	BTM OF PIPE	VERT. SEP.
8	N 8156.91 E 13375.46	8" PVC SANITARY 5889.40	8" PVC WATER 5895.90	6.50'
9	N 8204.94 E 13546.70	8" PVC SANITARY 5894.12	8" PVC WATER 5887.64	6.47'
10	N 8217.99 E 13594.59	8" PVC WATER 5891.84	30" RCP STORM 5891.85	1.50'
11	N 8223.77 E 13767.48	8" PVC SANITARY 5877.12	8" PVC WATER 5891.98	14.86'
12	N 8224.67 E 13915.84	8" PVC WATER 5890.37	24" RCP STORM 5891.88	1.51'
13	N 8225.22 E 14007.48	8" PVC SANITARY 5872.19	8" PVC WATER 5891.12	18.93'



- NOTES:
- ALL DEFLECTIONS ARE ACHIEVED UTILIZING HIGH-DEFLECTION COUPLERS.
 - WATER CROSSINGS REQUIRING SECONDARY CONTAINMENT SHALL BE IN ACCORDANCE WITH WIDEFIELD WATER STANDARDS DETAIL W-16.
 - ALL WATER LOWERINGS SHALL BE BUILT IN ACCORDANCE WITH WIDEFIELD WATER STANDARDS DETAIL W-16.
 - DEVELOPER IS RESPONSIBLE FOR INSTALLING WATERLINE THROUGH FRONTSIDE DRIVE NO MORE THAN 18 MONTHS AFTER CONSTRUCTION OF TRAILS AT ASPEN RIDGE FILING 4 TO PROVIDE WATER LOOPING.

THE LOCATIONS OF EXISTING ABOVE GROUND AND UNDERGROUND UTILITIES ARE SHOWN IN AN APPROXIMATE WAY ONLY. THE CONTRACTOR SHALL DETERMINE THE EXACT LOCATION OF ALL EXISTING UTILITIES BEFORE COMMENCING WORK. THE CONTRACTOR SHALL BE FULLY RESPONSIBLE FOR ANY AND ALL DAMAGES WHICH MIGHT BE CAUSED BY HIS FAILURE TO EXACTLY LOCATE AND PRESERVE ANY AND ALL ABOVE GROUND AND UNDERGROUND UTILITIES.

THE WIDEFIELD WATER AND SANITATION DISTRICT RECOGNIZES THE DESIGN ENGINEER AS HAVING RESPONSIBILITY FOR THE DESIGN AND HAS LIMITED ITS SCOPE OF REVIEW ACCORDINGLY.

**WIDEFIELD WATER AND SANITATION DISTRICT
WASTEWATER DESIGN APPROVAL**

DATE: _____ BY: _____

PROJECT NUMBER: _____

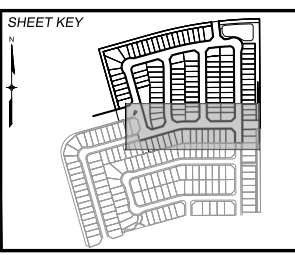
IN CASE OF ERRORS OR OMISSIONS WITH THE WATER DESIGN AS SHOWN ON THIS DOCUMENT THE STANDARDS AS DEFINED IN THE "RULES AND REGULATIONS FOR INSTALLATION OF WASTEWATER MAINS AND SERVICES" SHALL RULE.

APPROVAL EXPIRES 180 DAYS FROM DESIGN APPROVAL

NO.	DATE	DESCRIPTION	BY
1	10/14/2022	SHORTENED WATER SERVICES TO PROPERTY LINE	CWV

COMPUTER FILE MANAGEMENT

FILE NAME: s:\21.886.038 (trails f6)\100 Dwg\104 plan sets\construction plans\utility plans\water plan\WT01.dwg
 CTB FILE: Matrix(black).ctb
 PLOT DATE: July 28, 2025 9:44:42 AM
 THIS DRAWING IS CURRENT AS OF PLOT DATE AND MAY BE SUBJECT TO CHANGE.



BENCHMARK
 COLORADO SPRINGS UTILITIES (FIMS) MONUMENT F206
 A BERTNSEN TOP SECURITY MONUMENT SYSTEM WITH A 3.5-INCH DIAMETER ALUMINUM CAP IN A ROAD BOX, LOCATED ON THE NORTHWEST CORNER OF FONTAINE BOULEVARD AND POWERS BOULEVARD.
 ELEVATION - 5897.89' U.S. SURVEY FT

BASIS OF BEARING
 BEARINGS ARE BASED ON THE NORTH LINE OF THE NORTHWEST QUARTER OF SECTION 9, TOWNSHIP 15 SOUTH, RANGE 65 WEST OF THE 6TH P.M. SAID LINE BEARS S89°51'23"E FROM THE NORTHWEST CORNER OF SAID SECTION 9 (2 1/2' AULM. CAP PLS 17664) TO THE N 1/4 CORNER OF SAID SECTION 9 (3 1/2' AULM. CAP PLS 10377)



TRAILS AT ASPEN RIDGE

FILING NO. 4
PUBLIC WATERLINE PLANS

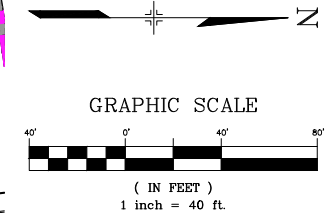
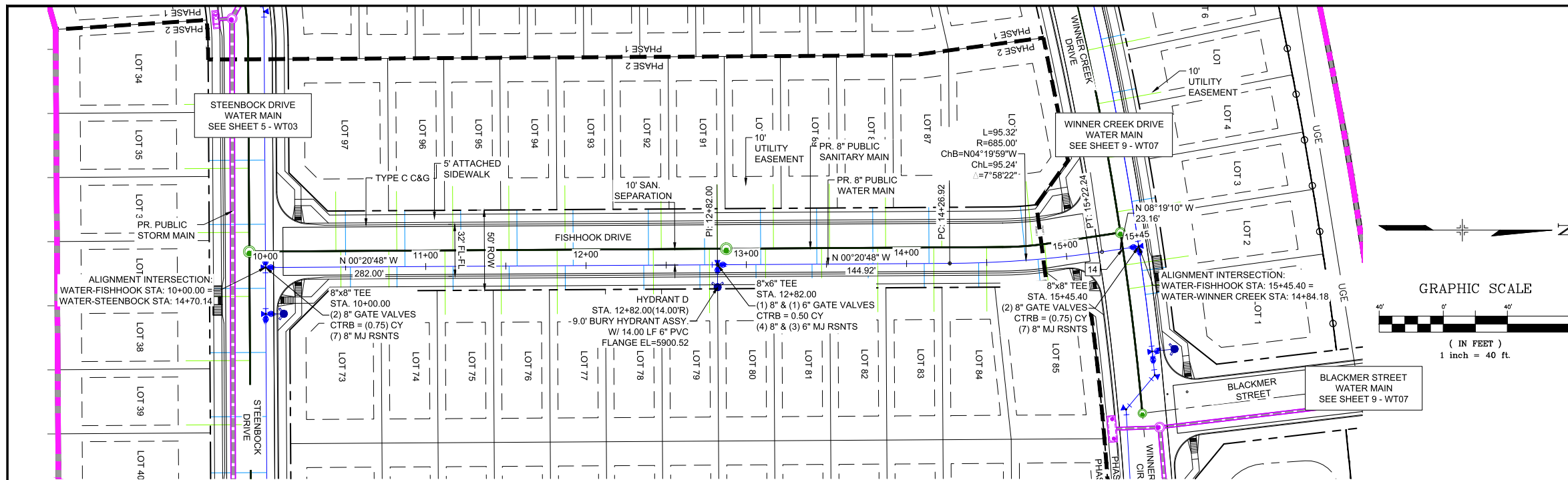
WATERLINE PLAN AND PROFILE

DESIGNED BY: JSE SCALE: 1" = 40'
 DRAWN BY: JSE HORIZ: 1" = 40'
 CHECKED BY: NMS VERT: 1" = 5' SHEET: 5 OF 12

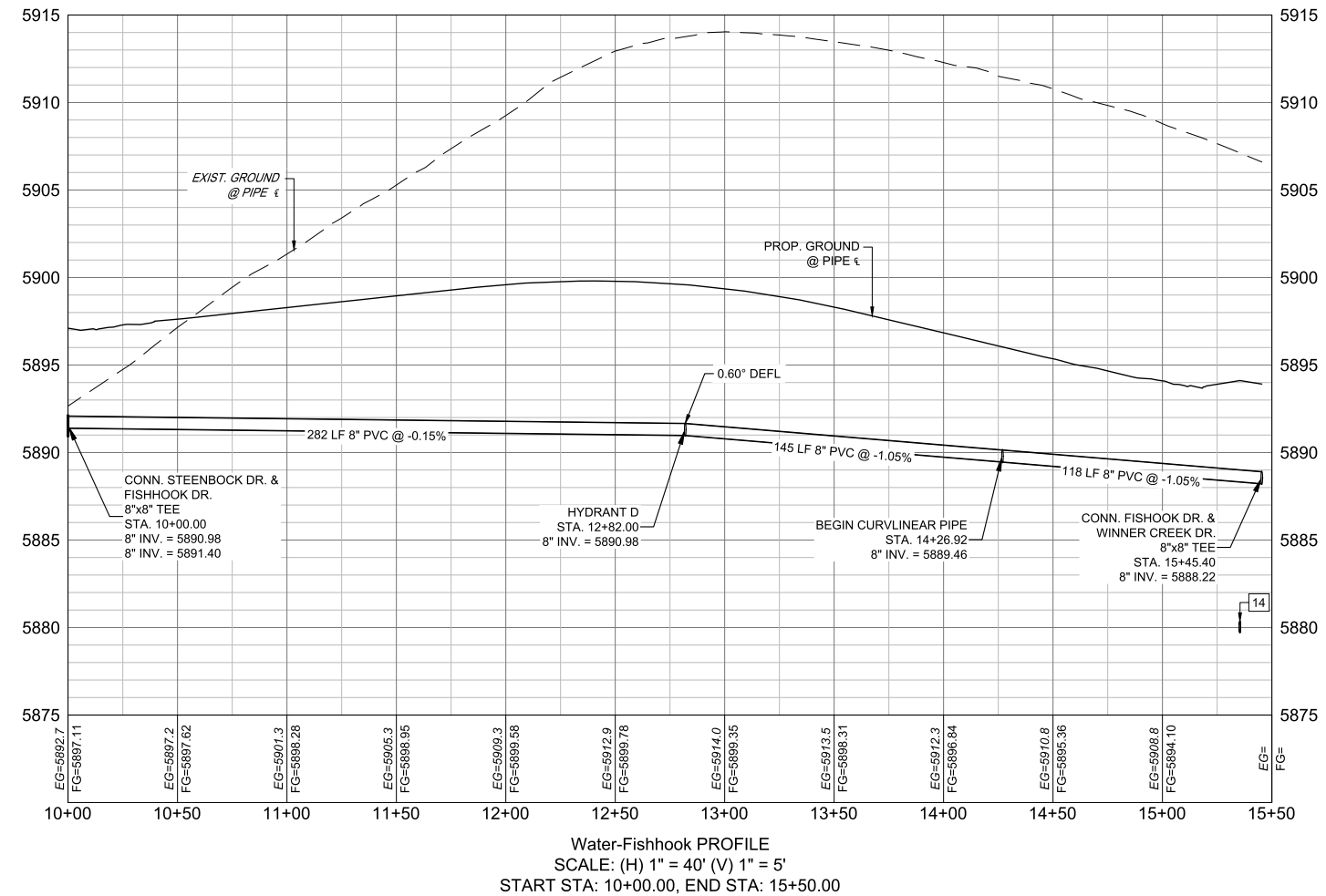
DATE ISSUED: JULY, 2025 DRAWING No. WT03



Know what's below.
Call before you dig.



UTILITY CROSSING DETAILS				
CROSSING #	N & E	TOP OF PIPE	BTM OF PIPE	VERT. SEP.
14	N 8758.73 E 13765.80	8" PVC SANITARY 5880.34	8" PVC WATER 5888.74	8.40'



- NOTES:**
- ALL DEFLECTIONS ARE ACHIEVED UTILIZING HIGH-DEFLECTION COUPLERS.
 - WATER CROSSINGS REQUIRING SECONDARY CONTAINMENT SHALL BE IN ACCORDANCE WITH WIDEFIELD WATER STANDARDS DETAIL W-16.
 - ALL WATER LOWERINGS SHALL BE BUILT IN ACCORDANCE WITH WIDEFIELD WATER STANDARDS DETAIL W-16.
 - DEVELOPER IS RESPONSIBLE FOR INSTALLING WATERLINE THROUGH FRONTSIDE DRIVE NO MORE THAN 18 MONTHS AFTER CONSTRUCTION OF TRAILS AT ASPEN RIDGE FILING 4 TO PROVIDE WATER LOOPING.

THE LOCATIONS OF EXISTING ABOVE GROUND AND UNDERGROUND UTILITIES ARE SHOWN IN AN APPROXIMATE WAY ONLY. THE CONTRACTOR SHALL DETERMINE THE EXACT LOCATION OF ALL EXISTING UTILITIES BEFORE COMMENCING WORK. THE CONTRACTOR SHALL BE FULLY RESPONSIBLE FOR ANY AND ALL DAMAGES WHICH MIGHT BE CAUSED BY HIS FAILURE TO EXACTLY LOCATE AND PRESERVE ANY AND ALL ABOVE GROUND AND UNDERGROUND UTILITIES.

THE WIDEFIELD WATER AND SANITATION DISTRICT RECOGNIZES THE DESIGN ENGINEER AS HAVING RESPONSIBILITY FOR THE DESIGN AND HAS LIMITED ITS SCOPE OF REVIEW ACCORDINGLY.

**WIDEFIELD WATER AND SANITATION DISTRICT
WASTEWATER DESIGN APPROVAL**

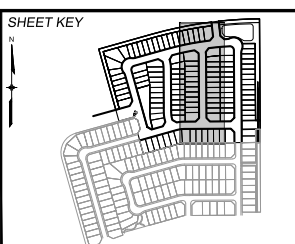
DATE: _____ BY: _____
PROJECT NUMBER: _____

IN CASE OF ERRORS OR OMISSIONS WITH THE WATER DESIGN AS SHOWN ON THIS DOCUMENT THE STANDARDS AS DEFINED IN THE "RULES AND REGULATIONS FOR INSTALLATION OF WASTEWATER MAINS AND SERVICES" SHALL RULE.

APPROVAL EXPIRES 180 DAYS FROM DESIGN APPROVAL

REFERENCE DRAWINGS	No.	DATE	DESCRIPTION
	1	10/14/2022	SHORTENED WATER SERVICES TO PROPERTY LINE

COMPUTER FILE MANAGEMENT	
FILE NAME:	s:\21.886.038 (trails f6)\100 Dwg\104 plan sets\construction plans\utility plans\water plan\WT01.dwg
CTB FILE:	Matrix(black).ctb
PLOT DATE:	July 28, 2025 9:44:54 AM
THIS DRAWING IS CURRENT AS OF PLOT DATE AND MAY BE SUBJECT TO CHANGE.	



BENCHMARK
COLORADO SPRINGS UTILITIES (FIMS) MONUMENT F206
A BERNTSEN TOP SECURITY MONUMENT SYSTEM WITH A 3.5-INCH DIAMETER ALUMINUM CAP IN A ROAD BOX, LOCATED ON THE NORTHWEST CORNER OF FONTAINE BOULEVARD AND POWERS BOULEVARD.
ELEVATION - 5897.89' U.S. SURVEY FT

BASIS OF BEARING
BEARINGS ARE BASED ON THE NORTH LINE OF THE NORTHWEST QUARTER OF SECTION 9, TOWNSHIP 15 SOUTH, RANGE 65 WEST OF THE 6TH P.M. SAID LINE BEARS S89°51'23"E FROM THE NORTHWEST CORNER OF SAID SECTION 9 (2 1/2" AULM. CAP PLS 17664) TO THE N 1/4 CORNER OF SAID SECTION 9 (3 1/2" AULM. CAP PLS 10377)



TRAILS AT ASPEN RIDGE

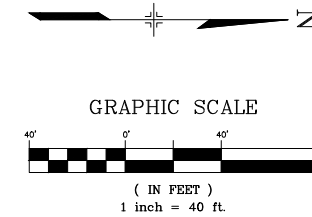
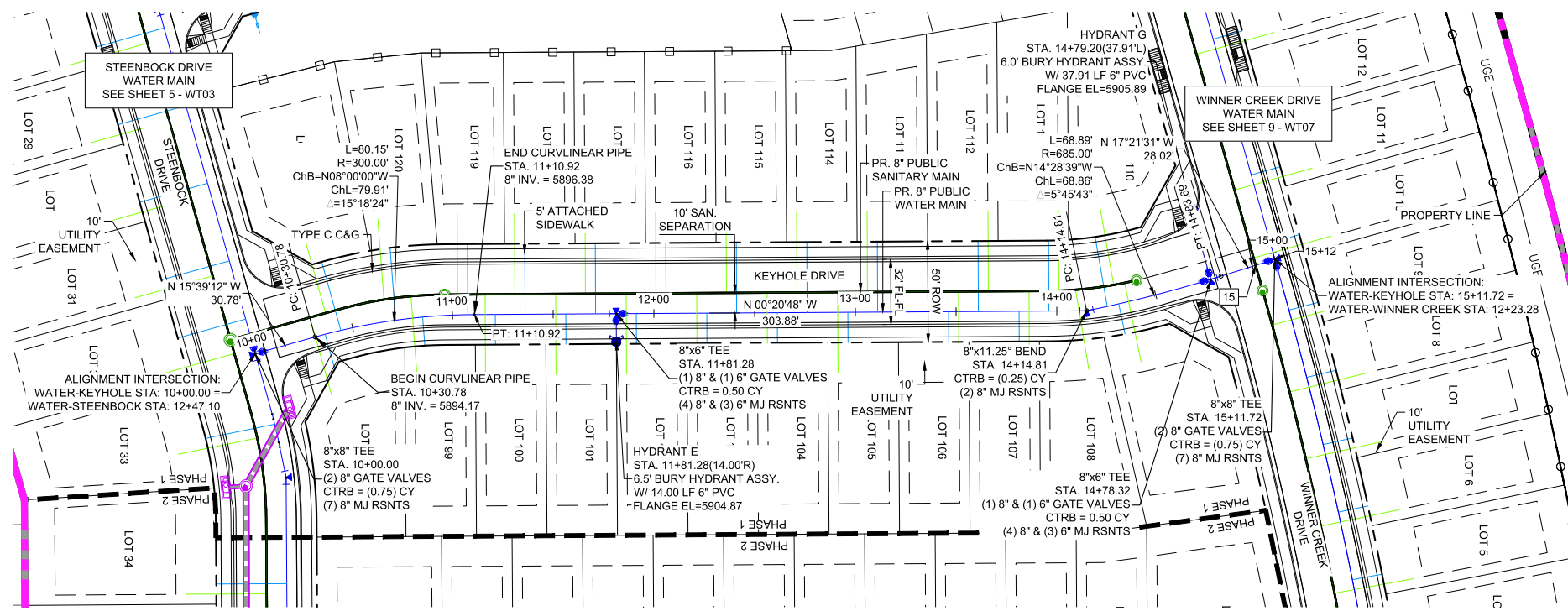
FILING NO. 4
PUBLIC WATERLINE PLANS

WATERLINE PLAN AND PROFILE

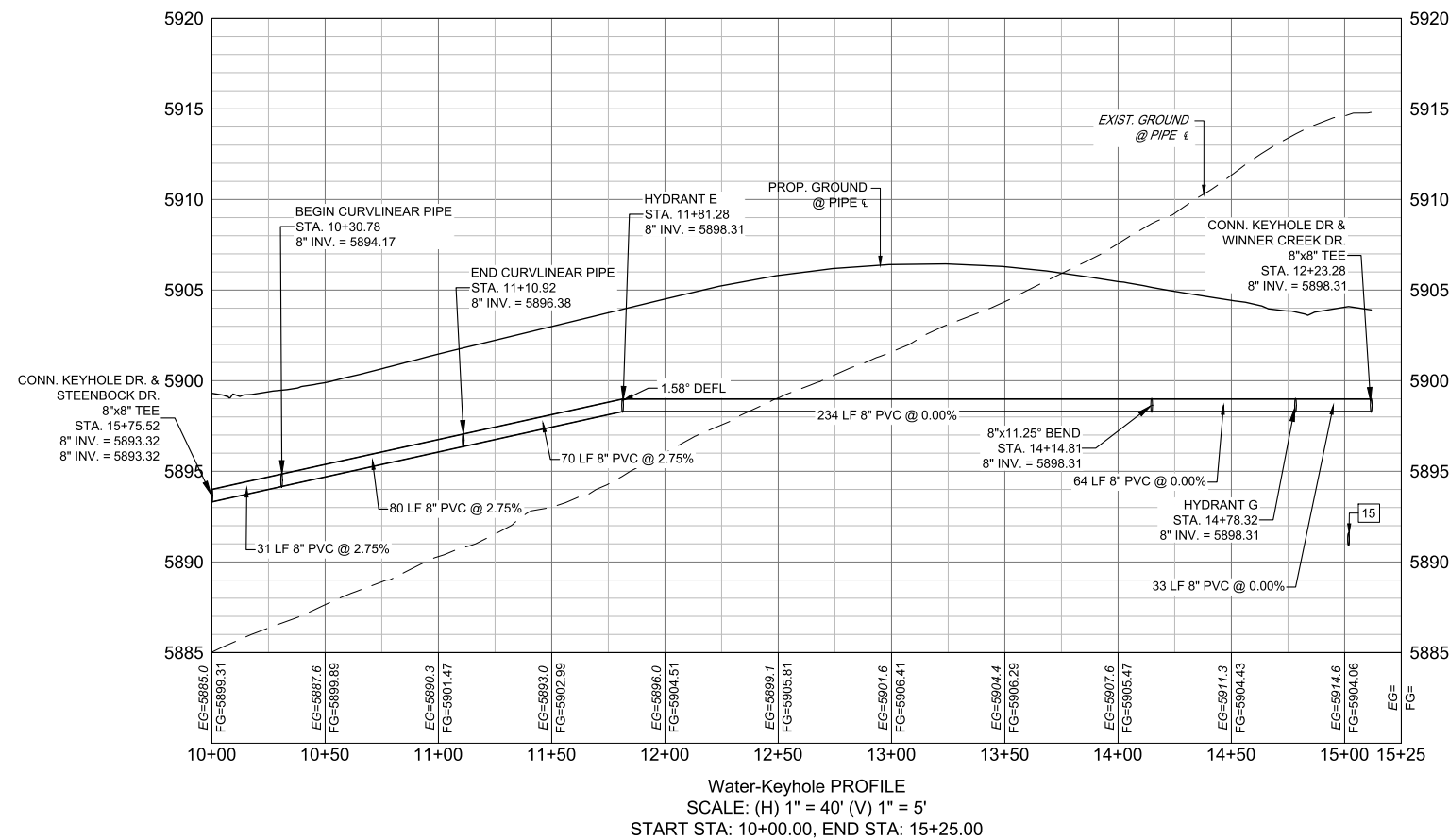
DESIGNED BY:	JSE	SCALE:	DATE ISSUED:	JULY, 2025	DRAWING No.
DRAWN BY:	JSE	HORIZ. 1" = 40'	SHEET	6 OF 12	WT04
CHECKED BY:	NMS	VERT. 1" = 5'			



Know what's below.
Call before you dig.



UTILITY CROSSING DETAILS				
CROSSING #	N & E	TOP OF PIPE	BTM OF PIPE	VERT. SEP.
15	N 8704.11 E 13512.49	8" PVC SANITARY 5891.60	8" PVC WATER 5898.29	6.68'



- NOTES:**
- ALL DEFLECTIONS ARE ACHIEVED UTILIZING HIGH-DEFLECTION COUPLERS.
 - WATER CROSSINGS REQUIRING SECONDARY CONTAINMENT SHALL BE IN ACCORDANCE WITH WIDEFIELD WATER STANDARDS DETAIL W-16.
 - ALL WATER LOWERINGS SHALL BE BUILT IN ACCORDANCE WITH WIDEFIELD WATER STANDARDS DETAIL W-16.
 - DEVELOPER IS RESPONSIBLE FOR INSTALLING WATERLINE THROUGH FRONTSIDE DRIVE NO MORE THAN 18 MONTHS AFTER CONSTRUCTION OF TRAILS AT ASPEN RIDGE FILING 4 TO PROVIDE WATER LOOPING.

THE LOCATIONS OF EXISTING ABOVE GROUND AND UNDERGROUND UTILITIES ARE SHOWN IN AN APPROXIMATE WAY ONLY. THE CONTRACTOR SHALL DETERMINE THE EXACT LOCATION OF ALL EXISTING UTILITIES BEFORE COMMENCING WORK. THE CONTRACTOR SHALL BE FULLY RESPONSIBLE FOR ANY AND ALL DAMAGES WHICH MIGHT BE CAUSED BY HIS FAILURE TO EXACTLY LOCATE AND PRESERVE ANY AND ALL ABOVE GROUND AND UNDERGROUND UTILITIES.

THE WIDEFIELD WATER AND SANITATION DISTRICT RECOGNIZES THE DESIGN ENGINEER AS HAVING RESPONSIBILITY FOR THE DESIGN AND HAS LIMITED ITS SCOPE OF REVIEW ACCORDINGLY.

**WIDEFIELD WATER AND SANITATION DISTRICT
WASTEWATER DESIGN APPROVAL**

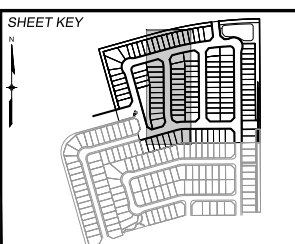
DATE: _____ BY: _____
PROJECT NUMBER: _____

IN CASE OF ERRORS OR OMISSIONS WITH THE WATER DESIGN AS SHOWN ON THIS DOCUMENT THE STANDARDS AS DEFINED IN THE "RULES AND REGULATIONS FOR INSTALLATION OF WASTEWATER MAINS AND SERVICES" SHALL RULE.

APPROVAL EXPIRES 180 DAYS FROM DESIGN APPROVAL

REFERENCE DRAWINGS	NO.	DATE	DESCRIPTION	BY
	1	10/14/2022	SHORTENED WATER SERVICES TO PROPERTY LINE	CWV

COMPUTER FILE MANAGEMENT	
FILE NAME:	s:\21.886.038 (trails f6)\100 Dwg\104 plan sets\construction plans\utility plans\water plan\WT01.dwg
CTB FILE:	Matrix(black).ctb
PLOT DATE:	July 28, 2025 9:45:07 AM
THIS DRAWING IS CURRENT AS OF PLOT DATE AND MAY BE SUBJECT TO CHANGE.	



BENCHMARK
COLORADO SPRINGS UTILITIES (FIMS) MONUMENT F206
A BERTSEN TOP SECURITY MONUMENT SYSTEM WITH A 3.5-INCH DIAMETER ALUMINUM CAP IN A ROAD BOX, LOCATED ON THE NORTHWEST CORNER OF FONTAINE BOULEVARD AND POWERS BOULEVARD.
ELEVATION - 5897.89' U.S. SURVEY FT

BASIS OF BEARING
BEARINGS ARE BASED ON THE NORTH LINE OF THE NORTHWEST QUARTER OF SECTION 9, TOWNSHIP 15 SOUTH, RANGE 65 WEST OF THE 6TH P.M. SAID LINE BEARS S89°51'23"E FROM THE NORTHWEST CORNER OF SAID SECTION 9 (2 1/2' AULM. CAP PLS 17664) TO THE N 1/4 CORNER OF SAID SECTION 9 (3 1/2' AULM. CAP PLS 10377)



TRAILS AT ASPEN RIDGE

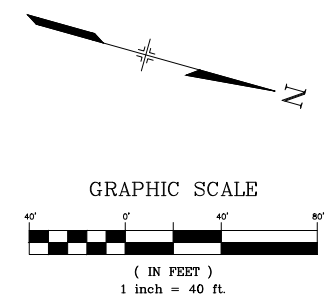
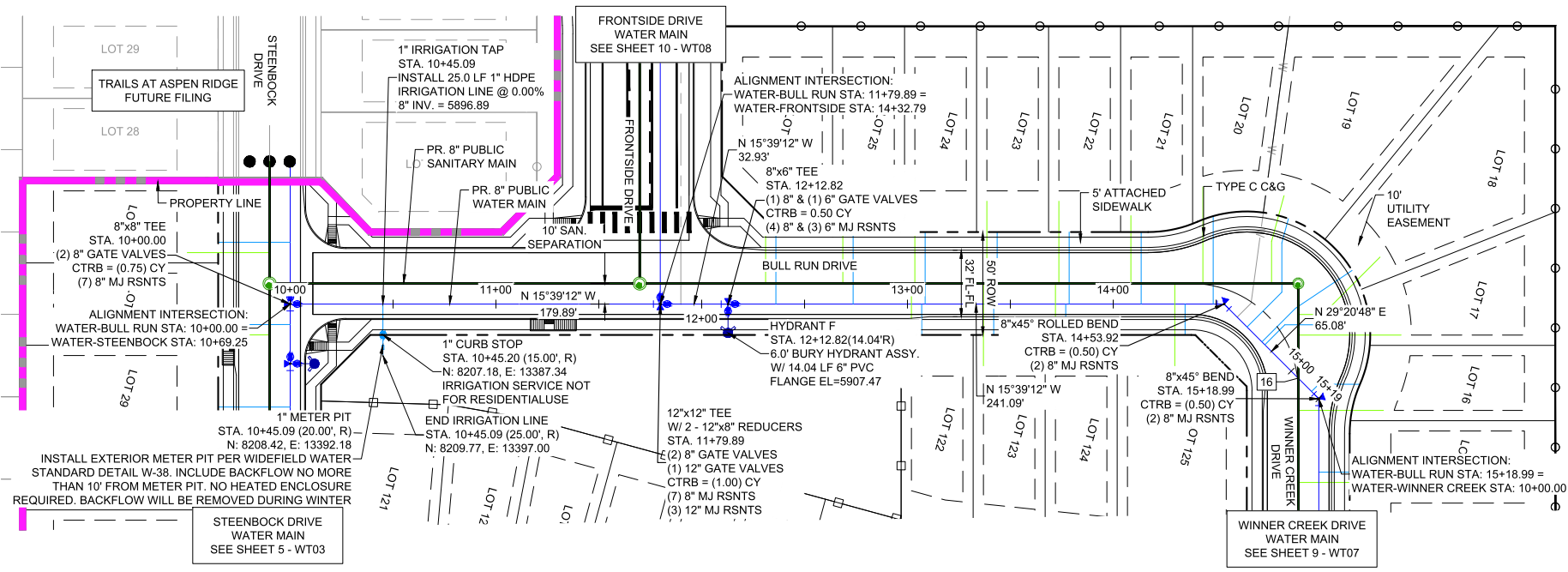
FILING NO. 4
PUBLIC WATERLINE PLANS

WATERLINE PLAN AND PROFILE

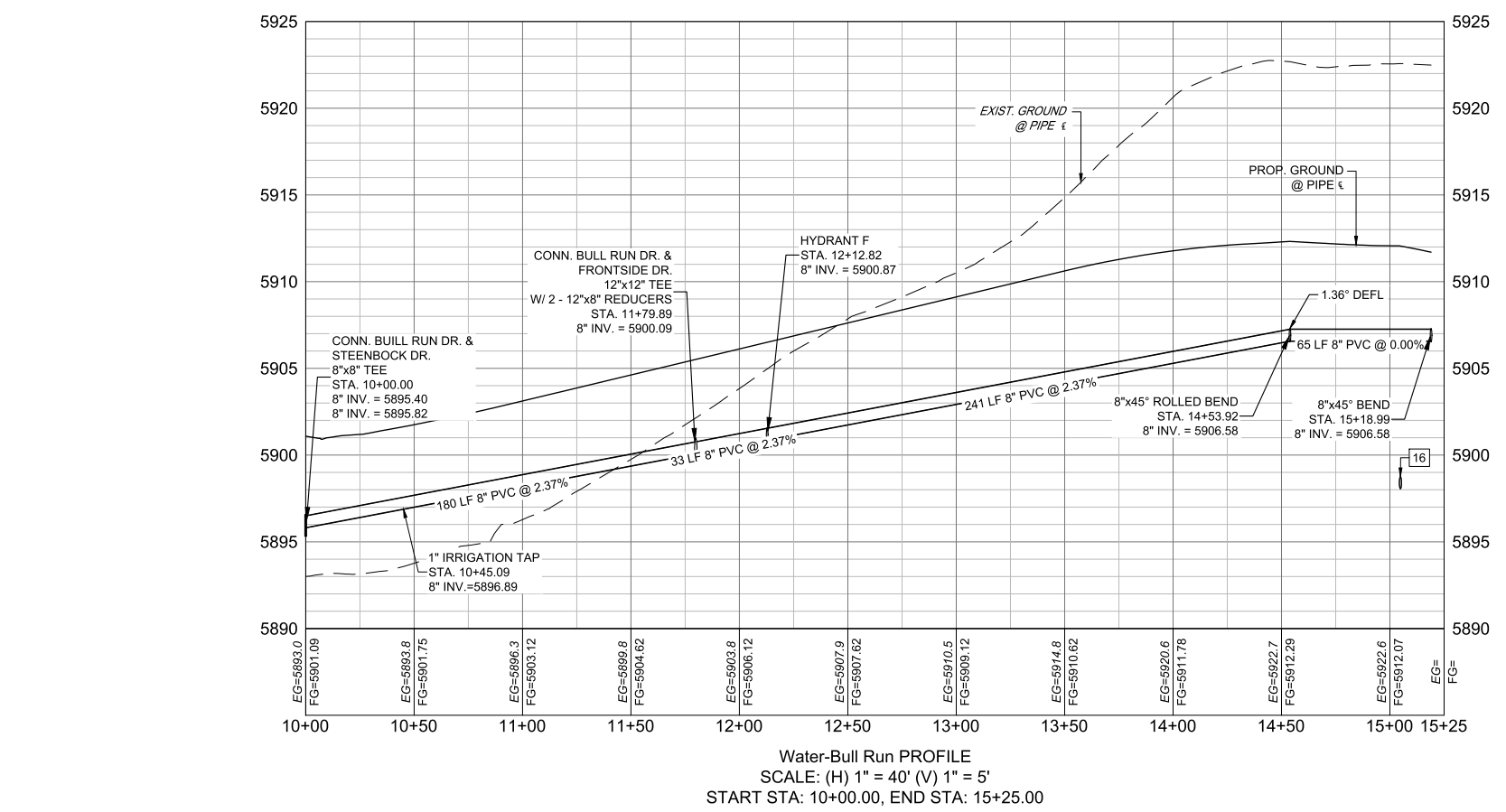
DESIGNED BY:	JSE	SCALE:	DATE ISSUED:	JULY, 2025	DRAWING No.:
DRAWN BY:	JSE	HORIZ. 1" = 40'	SHEET:	7 OF 12	WT05
CHECKED BY:	NMS	VERT. 1" = 5'			



Know what's below.
Call before you dig.



UTILITY CROSSING DETAILS				
CROSSING #	N & E	TOP OF PIPE	BTM OF PIPE	VERT. SEP.
16	N 8641.09 E 13287.58	8" PVC SANITARY 5898.76	8" PVC WATER 5906.56	7.80'



- NOTES:**
- ALL DEFLECTIONS ARE ACHIEVED UTILIZING HIGH-DEFLECTION COUPLERS.
 - WATER CROSSINGS REQUIRING SECONDARY CONTAINMENT SHALL BE IN ACCORDANCE WITH WIDEFIELD WATER STANDARDS DETAIL W-16.
 - ALL WATER LOWERINGS SHALL BE BUILT IN ACCORDANCE WITH WIDEFIELD WATER STANDARDS DETAIL W-16.
 - DEVELOPER IS RESPONSIBLE FOR INSTALLING WATERLINE THROUGH FRONTSIDE DRIVE NO MORE THAN 18 MONTHS AFTER CONSTRUCTION OF TRAILS AT ASPEN RIDGE FILING 4 TO PROVIDE WATER LOOPING.

THE LOCATIONS OF EXISTING ABOVE GROUND AND UNDERGROUND UTILITIES ARE SHOWN IN AN APPROXIMATE WAY ONLY. THE CONTRACTOR SHALL DETERMINE THE EXACT LOCATION OF ALL EXISTING UTILITIES BEFORE COMMENCING WORK. THE CONTRACTOR SHALL BE FULLY RESPONSIBLE FOR ANY AND ALL DAMAGES WHICH MIGHT BE CAUSED BY HIS FAILURE TO EXACTLY LOCATE AND PRESERVE ANY AND ALL ABOVE GROUND AND UNDERGROUND UTILITIES.

THE WIDEFIELD WATER AND SANITATION DISTRICT RECOGNIZES THE DESIGN ENGINEER AS HAVING RESPONSIBILITY FOR THE DESIGN AND HAS LIMITED ITS SCOPE OF REVIEW ACCORDINGLY.

**WIDEFIELD WATER AND SANITATION DISTRICT
WASTEWATER DESIGN APPROVAL**

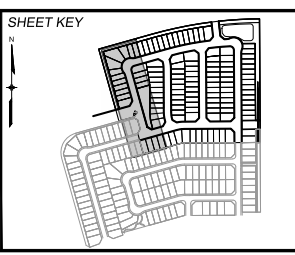
DATE: _____ BY: _____
PROJECT NUMBER: _____

IN CASE OF ERRORS OR OMISSIONS WITH THE WATER DESIGN AS SHOWN ON THIS DOCUMENT THE STANDARDS AS DEFINED IN THE "RULES AND REGULATIONS FOR INSTALLATION OF WASTEWATER MAINS AND SERVICES" SHALL RULE.

APPROVAL EXPIRES 180 DAYS FROM DESIGN APPROVAL

REFERENCE DRAWINGS	NO.	DATE	DESCRIPTION	CVW BY
	1	10/14/2022	SHORTENED WATER SERVICES TO PROPERTY LINE	

COMPUTER FILE MANAGEMENT	
FILE NAME:	s:\21.886.038 (trails f6)\100 Dwg\104 plan sets\construction plans\utility plans\water plan\WT01.dwg
CTB FILE:	Matrix(black).ctb
PLOT DATE:	July 28, 2025 9:45:24 AM
THIS DRAWING IS CURRENT AS OF PLOT DATE AND MAY BE SUBJECT TO CHANGE.	



BENCHMARK
COLORADO SPRINGS UTILITIES (FIMS) MONUMENT F206
A BERNTSEN TOP SECURITY MONUMENT SYSTEM WITH A 3.5-INCH DIAMETER ALUMINUM CAP IN A ROAD BOX, LOCATED ON THE NORTHWEST CORNER OF FONTAINE BOULEVARD AND POWERS BOULEVARD.
ELEVATION - 5897.89' U.S. SURVEY FT

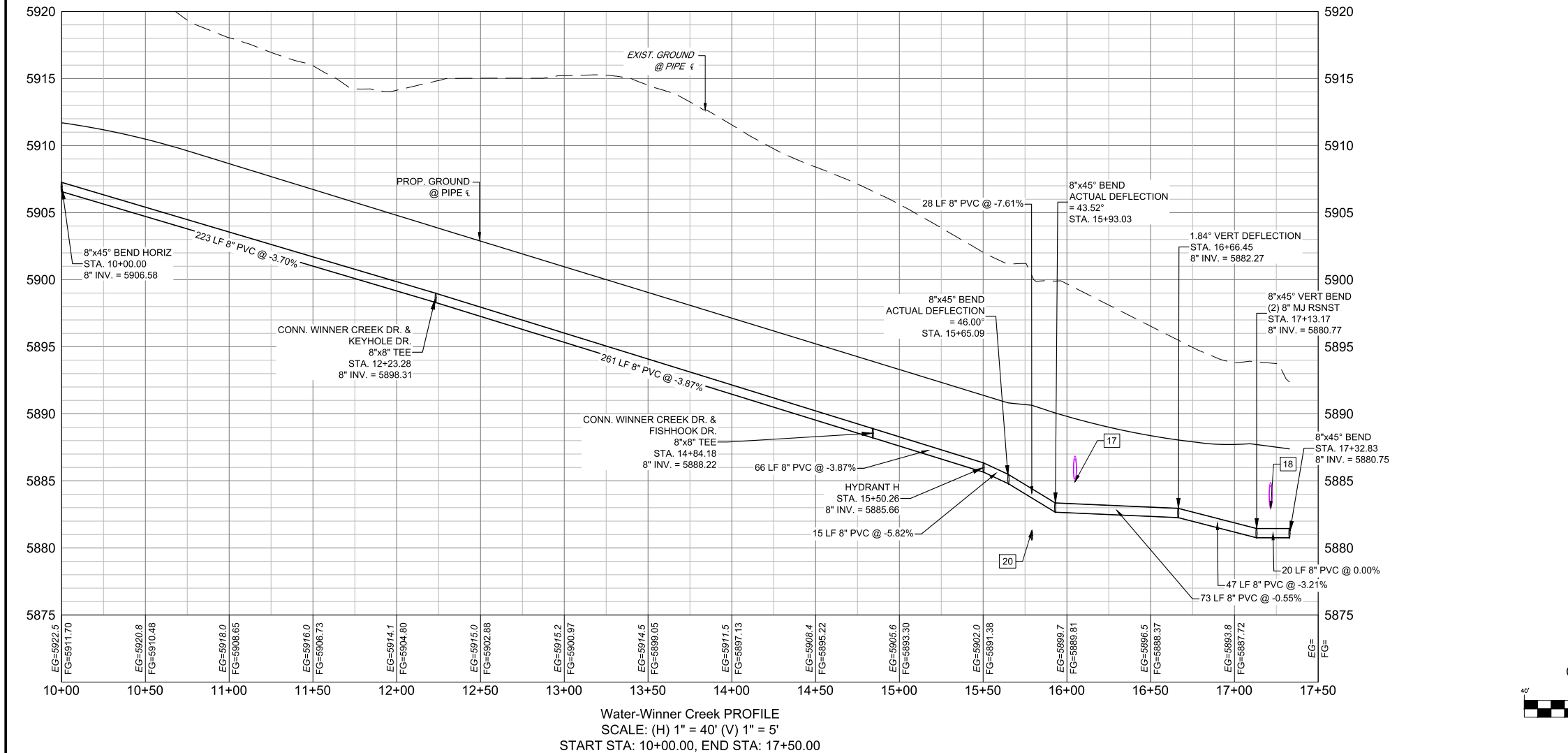
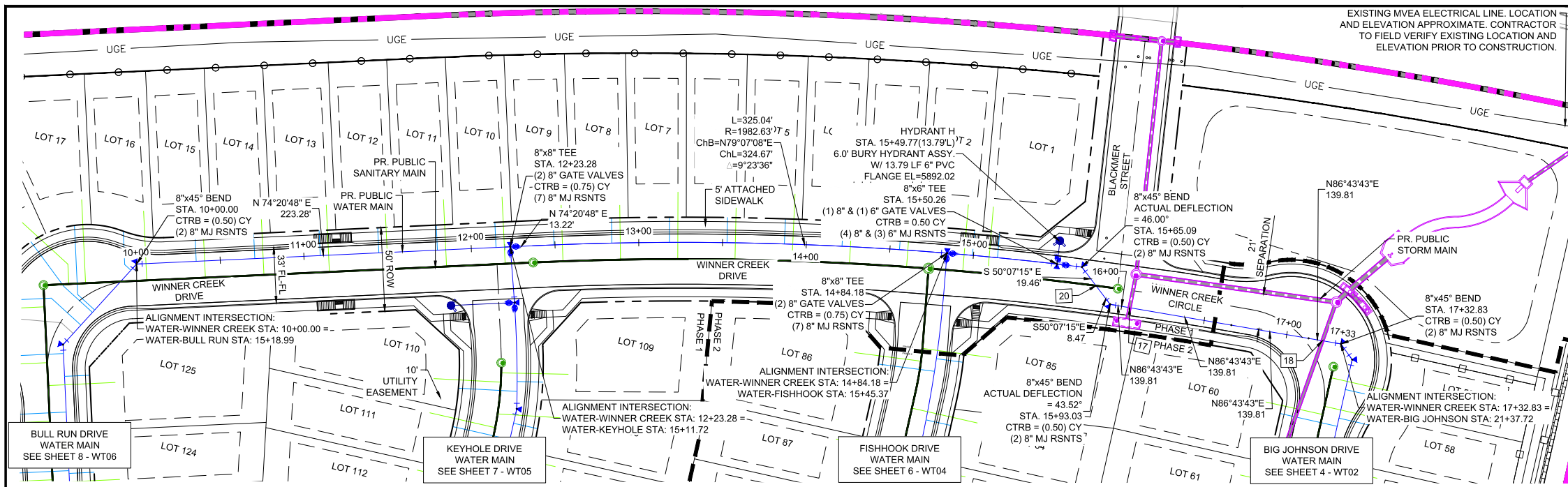
BASIS OF BEARING
BEARINGS ARE BASED ON THE NORTH LINE OF THE NORTHWEST QUARTER OF SECTION 9, TOWNSHIP 15 SOUTH, RANGE 65 WEST OF THE 6TH P.M. SAID LINE BEARS S89°51'23"E FROM THE NORTHWEST CORNER OF SAID SECTION 9 (2 1/2' AULM. CAP PLS 17664) TO THE N 1/4 CORNER OF SAID SECTION 9 (3 1/2' AULM. CAP PLS 10377)



TRAILS AT ASPEN RIDGE			
FILING NO. 4 PUBLIC WATERLINE PLANS			
WATERLINE PLAN AND PROFILE			
DESIGNED BY:	JSE	SCALE:	DATE ISSUED:
DRAWN BY:	JSE	HORIZ. 1" = 40'	JULY, 2025
CHECKED BY:	NMS	VERT. 1" = 5'	SHEET 8 OF 12
			DRAWING No. WT06



Know what's below.
Call before you dig.



UTILITY CROSSING DETAILS				
CROSSING #	N & E	TOP OF PIPE	BTM OF PIPE	VERT. SEP.
17	N 8761.41 E 13877.85	8" PVC WATER 5883.30	18" RCP STORM 5884.94	1.64'
18	N 8768.08 E 13994.45	8" PVC WATER 5882.97	18" RCP STORM 5881.46	1.51'
20	N 8770.00 E 13848.47	8" PVC SANITARY 5881.29	8" PVC WATER 5883.71	2.42'

- NOTES:**
- ALL DEFLECTIONS ARE ACHIEVED UTILIZING HIGH-DEFLECTION COUPLERS.
 - WATER CROSSINGS REQUIRING SECONDARY CONTAINMENT SHALL BE IN ACCORDANCE WITH WIDEFIELD WATER STANDARDS DETAIL W-16.
 - ALL WATER LOWERINGS SHALL BE BUILT IN ACCORDANCE WITH WIDEFIELD WATER STANDARDS DETAIL W-16.
 - DEVELOPER IS RESPONSIBLE FOR INSTALLING WATERLINE THROUGH FRONTSIDE DRIVE NO MORE THAN 18 MONTHS AFTER CONSTRUCTION OF TRAILS AT ASPEN RIDGE FILING 4 TO PROVIDE WATER LOOPING.

THE LOCATIONS OF EXISTING ABOVE GROUND AND UNDERGROUND UTILITIES ARE SHOWN IN AN APPROXIMATE WAY ONLY. THE CONTRACTOR SHALL DETERMINE THE EXACT LOCATION OF ALL EXISTING UTILITIES BEFORE COMMENCING WORK. THE CONTRACTOR SHALL BE FULLY RESPONSIBLE FOR ANY AND ALL DAMAGES WHICH MIGHT BE CAUSED BY HIS FAILURE TO EXACTLY LOCATE AND PRESERVE ANY AND ALL ABOVE GROUND AND UNDERGROUND UTILITIES.

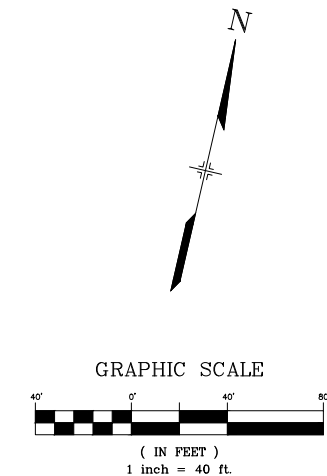
THE WIDEFIELD WATER AND SANITATION DISTRICT RECOGNIZES THE DESIGN ENGINEER AS HAVING RESPONSIBILITY FOR THE DESIGN AND HAS LIMITED ITS SCOPE OF REVIEW ACCORDINGLY.

**WIDEFIELD WATER AND SANITATION DISTRICT
WASTEWATER DESIGN APPROVAL**

DATE: _____ BY: _____
PROJECT NUMBER: _____

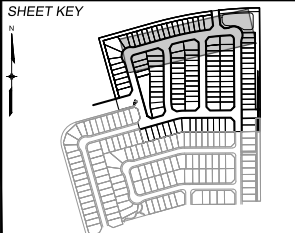
IN CASE OF ERRORS OR OMISSIONS WITH THE WATER DESIGN AS SHOWN ON THIS DOCUMENT THE STANDARDS AS DEFINED IN THE "RULES AND REGULATIONS FOR INSTALLATION OF WASTEWATER MAINS AND SERVICES" SHALL RULE.

APPROVAL EXPIRES 180 DAYS FROM DESIGN APPROVAL



REFERENCE DRAWINGS	DATE	DESCRIPTION	BY
1	10/14/2022	SHORTENED WATER SERVICES TO PROPERTY LINE	CWV
REVISIONS			

COMPUTER FILE MANAGEMENT	
FILE NAME:	s:\21.886.038 (trails f6)\100 Dwg\104 plan sets\construction plans\utility plans\water plan\WT01.dwg
CTB FILE:	Matrix(black).ctb
PLOT DATE:	July 28, 2025 9:45:37 AM
THIS DRAWING IS CURRENT AS OF PLOT DATE AND MAY BE SUBJECT TO CHANGE.	



BENCHMARK
COLORADO SPRINGS UTILITIES (FIMS) MONUMENT F206
A BERNTSEN TOP SECURITY MONUMENT SYSTEM WITH A 3.5-INCH DIAMETER ALUMINUM CAP IN A ROAD BOX, LOCATED ON THE NORTHWEST CORNER OF FONTAINE BOULEVARD AND POWERS BOULEVARD.
ELEVATION - 5897.89' U.S. SURVEY FT

BASIS OF BEARING
BEARINGS ARE BASED ON THE NORTH LINE OF THE NORTHWEST QUARTER OF SECTION 9, TOWNSHIP 15 SOUTH, RANGE 65 WEST OF THE 6TH P.M. SAID LINE BEARS S89°51'23"E FROM THE NORTHWEST CORNER OF SAID SECTION 9 (2 1/2' AULM. CAP PLS 17664) TO THE N 1/4 CORNER OF SAID SECTION 9 (3 1/2' AULM. CAP PLS 10377)

PREPARED BY:
Matrix



TRAILS AT ASPEN RIDGE

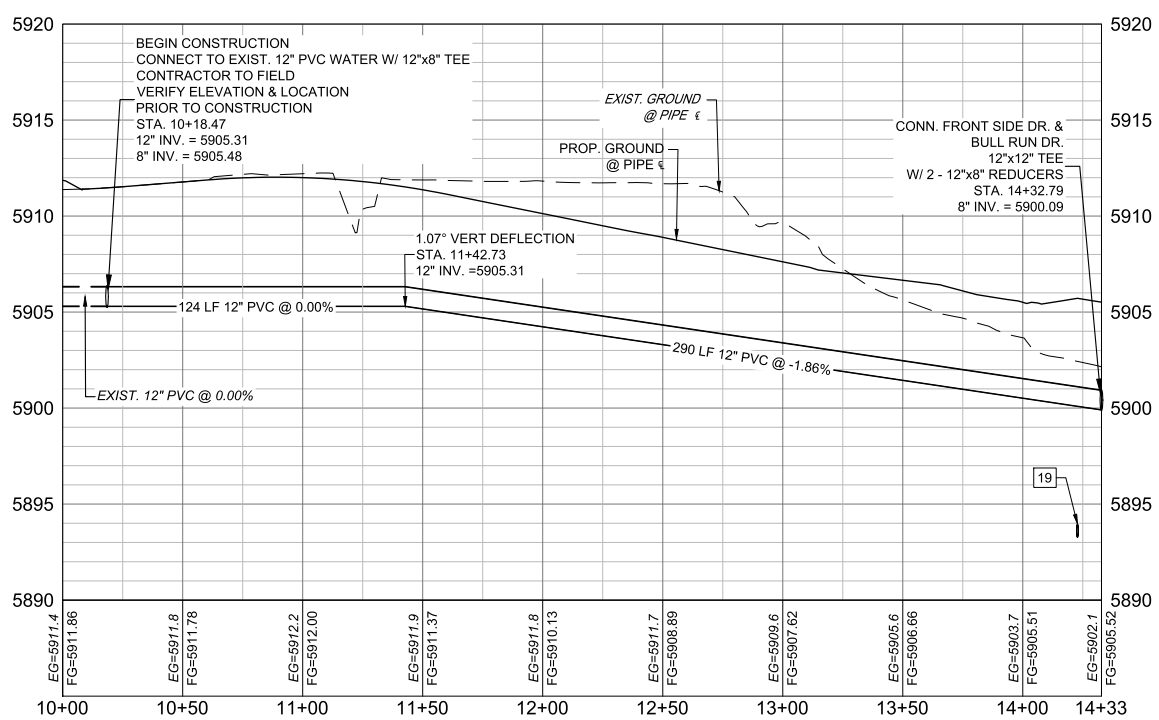
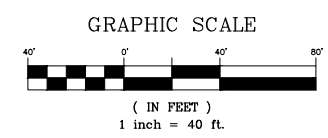
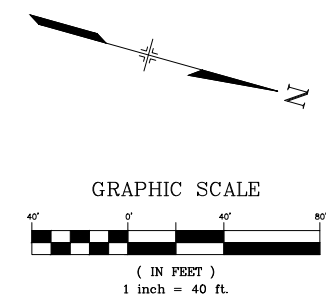
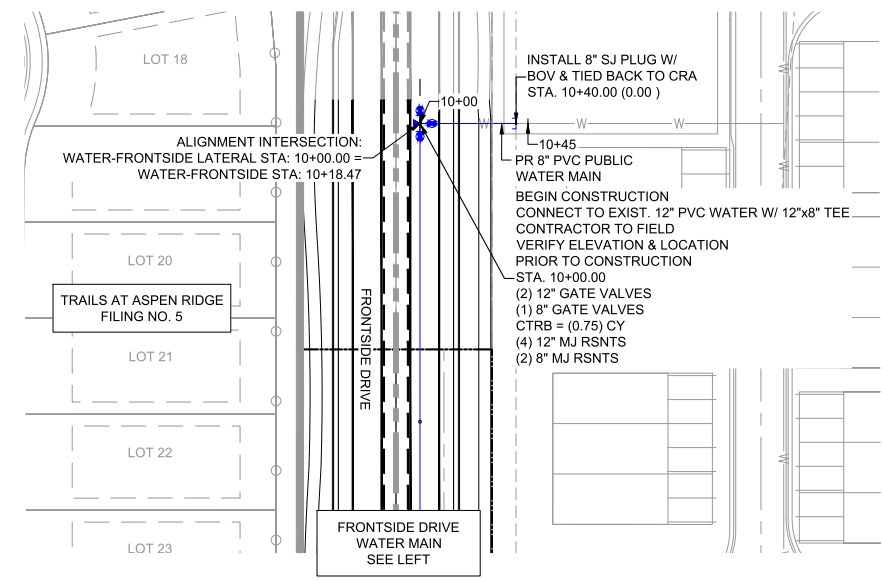
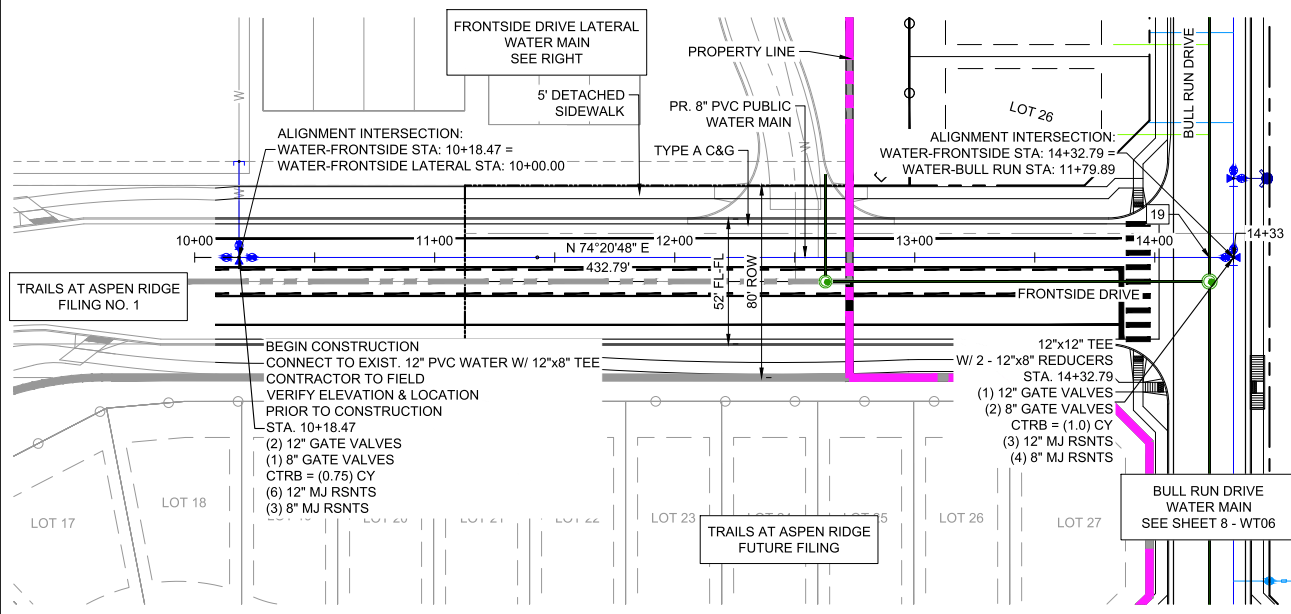
FILING NO. 4
PUBLIC WATERLINE PLANS

WATERLINE PLAN AND PROFILE

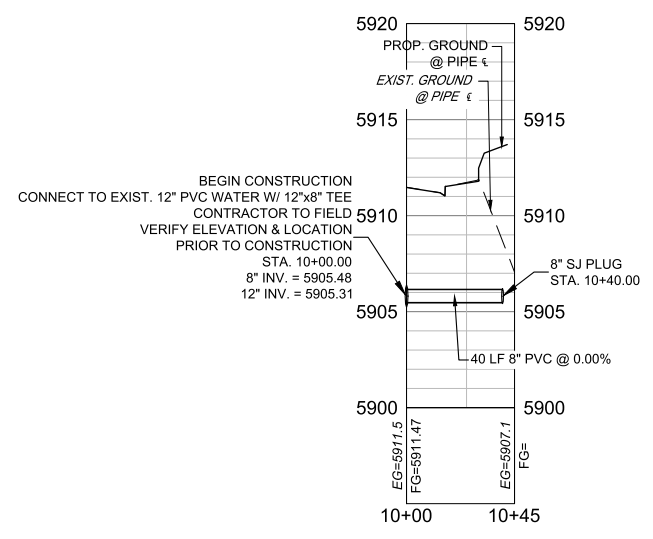
DESIGNED BY:	JSE	SCALE:	DATE ISSUED:	JULY, 2025	DRAWING No.
DRAWN BY:	JSE	HORIZ. 1" = 40'	SHEET	9 OF 12	WT07
CHECKED BY:	NMS	VERT. 1" = 5'			



Know what's below.
Call before you dig.



Water-Frontside PROFILE
SCALE: (H) 1" = 40' (V) 1" = 5'
START STA: 10+00.00, END STA: 14+32.79



Water-Frontside Lateral PROFILE
SCALE: (H) 1" = 40' (V) 1" = 5'
START STA: 10+00.00, END STA: 10+45.00

UTILITY CROSSING DETAILS				
CROSSING #	N & E	TOP OF PIPE	BTM OF PIPE	VERT. SEP.
19	N 8330.13 E 13326.92	8" PVC SANITARY 5893.97	12" PVC WATER 5900.08	6.11'

- NOTES:**
- ALL DEFLECTIONS ARE ACHIEVED UTILIZING HIGH-DEFLECTION COUPLERS.
 - WATER CROSSINGS REQUIRING SECONDARY CONTAINMENT SHALL BE IN ACCORDANCE WITH WIDEFIELD WATER STANDARDS DETAIL W-16.
 - ALL WATER LOWERINGS SHALL BE BUILT IN ACCORDANCE WITH WIDEFIELD WATER STANDARDS DETAIL W-16.
 - DEVELOPER IS RESPONSIBLE FOR INSTALLING WATERLINE THROUGH FRONT SIDE DRIVE NO MORE THAN 18 MONTHS AFTER CONSTRUCTION OF TRAILS AT ASPEN RIDGE FILING 4 TO PROVIDE WATER LOOPING.

THE LOCATIONS OF EXISTING ABOVE GROUND AND UNDERGROUND UTILITIES ARE SHOWN IN AN APPROXIMATE WAY ONLY. THE CONTRACTOR SHALL DETERMINE THE EXACT LOCATION OF ALL EXISTING UTILITIES BEFORE COMMENCING WORK. THE CONTRACTOR SHALL BE FULLY RESPONSIBLE FOR ANY AND ALL DAMAGES WHICH MIGHT BE CAUSED BY HIS FAILURE TO EXACTLY LOCATE AND PRESERVE ANY AND ALL ABOVE GROUND AND UNDERGROUND UTILITIES.

THE WIDEFIELD WATER AND SANITATION DISTRICT RECOGNIZES THE DESIGN ENGINEER AS HAVING RESPONSIBILITY FOR THE DESIGN AND HAS LIMITED ITS SCOPE OF REVIEW ACCORDINGLY.

**WIDEFIELD WATER AND SANITATION DISTRICT
WASTEWATER DESIGN APPROVAL**

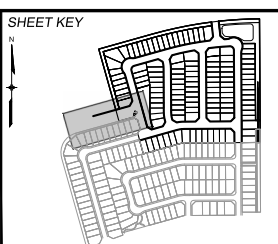
DATE: _____ BY: _____
PROJECT NUMBER: _____

IN CASE OF ERRORS OR OMISSIONS WITH THE WATER DESIGN AS SHOWN ON THIS DOCUMENT THE STANDARDS AS DEFINED IN THE "RULES AND REGULATIONS FOR INSTALLATION OF WASTEWATER MAINS AND SERVICES" SHALL RULE.

APPROVAL EXPIRES 180 DAYS FROM DESIGN APPROVAL

REFERENCE DRAWINGS	DATE	DESCRIPTION	BY
1	10/14/2022	SHORTENED WATER SERVICES TO PROPERTY LINE	CWV

COMPUTER FILE MANAGEMENT	
FILE NAME:	s:\21.886.038 (trails f6)\100 Dwg\104 plan sets\construction plans\utility plans\water plan\WT01.dwg
CTB FILE:	Matrix(black).ctb
PLOT DATE:	July 28, 2025 9:45:56 AM
THIS DRAWING IS CURRENT AS OF PLOT DATE AND MAY BE SUBJECT TO CHANGE.	



BENCHMARK
COLORADO SPRINGS UTILITIES (FIMS) MONUMENT F206
A BERNTSEN TOP SECURITY MONUMENT SYSTEM WITH A 3.5-INCH DIAMETER ALUMINUM CAP IN A ROAD BOX, LOCATED ON THE NORTHWEST CORNER OF FONTAINE BOULEVARD AND POWERS BOULEVARD.
ELEVATION - 5897.89' U.S. SURVEY FT

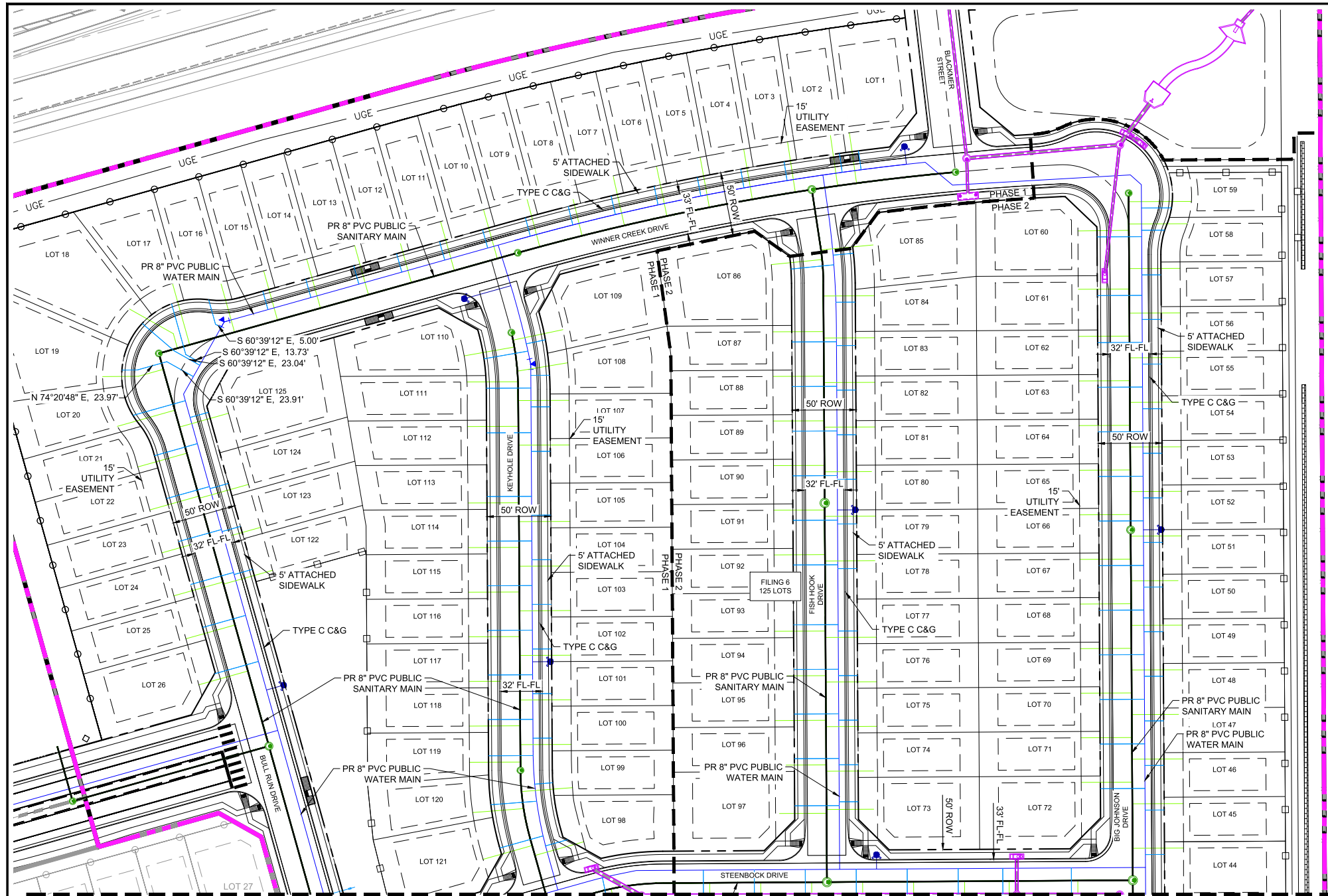
BASIS OF BEARING
BEARINGS ARE BASED ON THE NORTH LINE OF THE NORTHWEST QUARTER OF SECTION 9, TOWNSHIP 15 SOUTH, RANGE 65 WEST OF THE 6TH P.M. SAID LINE BEARS S89°51'23"E FROM THE NORTHWEST CORNER OF SAID SECTION 9 (2 1/2' AULM. CAP PLS 17664) TO THE N 1/4 CORNER OF SAID SECTION 9 (3 1/2' AULM. CAP PLS 10377)



TRAILS AT ASPEN RIDGE				
FILING NO. 4 PUBLIC WATERLINE PLANS				
WATERLINE PLAN AND PROFILE				
DESIGNED BY:	JSE	SCALE:	DATE ISSUED:	JULY, 2025
DRAWN BY:	JSE	HORIZ. 1" = 40'	SHEET	10 OF 12
CHECKED BY:	NMS	VERT. 1" = 5'	DRAWING No.	WT08



Know what's below.
Call before you dig.

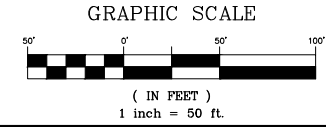


WATER SERVICE TABLE				
LOT #	BEARING	LENGTH	NORTHING	EASTING
1	S08°07'41"E	15.00	8787.62	13792.19
2	S08°07'41"E	15.00	8785.62	13777.33
3	S08°44'23"E	14.97	8779.13	13733.94
4	S09°45'23"E	14.97	8773.32	13699.82
5	S10°25'56"E	14.95	8766.90	13665.82
6	S11°47'25"E	14.97	8759.88	13631.92
7	S12°48'27"E	14.98	8752.26	13598.15
8	S13°49'30"E	14.98	8744.04	13564.52
9	S14°50'50"E	14.97	8735.18	13530.88
10	S15°39'12"E	15.00	8725.80	13497.25
11	S15°39'12"E	15.00	8716.36	13463.55
12	S15°39'12"E	15.00	8706.92	13429.85
13	S15°39'12"E	15.00	8697.47	13396.15
14	S15°39'12"E	15.00	8688.02	13362.50
15	S15°39'12"E	15.00	8677.48	13328.80
16	S15°33'28"E	20.00	8670.77	13282.34
17	S15°39'12"E	41.32	8667.60	13253.22
18B	N49°24'12"W	33.11	8630.63	13255.27
19B	S89°33'07"W	12.19	8615.68	13226.42
20	N74°20'48"E	42.73	8580.03	13222.91
21	N74°20'48"E	35.00	8548.42	13239.79
22	N74°20'48"E	35.00	8514.71	13249.24
23	N74°20'48"E	35.00	8481.01	13258.68
24	N74°20'48"E	35.00	8447.31	13268.12
25	N74°20'48"E	35.00	8413.61	13277.57
26	N74°20'48"E	35.86	8377.26	13286.86
44	N89°39'12"E	14.96	8235.38	14017.39
45	S89°39'12"W	15.00	8270.37	14032.21
46	S89°39'12"W	15.00	8305.37	14031.99
47	S89°47'31"W	15.00	8340.33	14031.78
48	S89°47'31"W	15.00	8375.33	14031.57
49	S89°47'31"W	15.00	8410.33	14031.36
50	S89°39'12"W	15.00	8445.37	14031.15
51	S89°47'31"W	15.00	8480.33	14030.94
52	S89°47'31"W	15.00	8515.33	14030.72
53	S89°47'31"W	15.00	8550.33	14030.51
54	S89°47'31"W	15.00	8585.33	14030.30
55	S89°47'31"W	15.00	8620.33	14030.09
56	S89°47'31"W	15.00	8655.33	14029.88
57	S89°47'31"W	15.00	8690.33	14029.67
58	S89°46'54"W	18.13	8725.34	14032.59
59	S89°45'27"W	23.58	8742.87	14037.93
60	N89°43'51"E	35.06	8720.11	13979.48
61	N89°43'50"E	35.00	8674.03	13979.76
62	N89°43'50"E	35.00	8637.11	13979.99
63	N89°43'50"E	35.00	8600.11	13980.20
64	N89°43'50"E	35.00	8567.11	13980.41
65	N89°43'50"E	35.00	8532.11	13980.62
66	N89°43'50"E	35.00	8497.11	13980.83
67	N89°43'50"E	35.00	8462.11	13981.04
68	N89°43'50"E	35.00	8427.11	13981.26
69	N89°43'50"E	35.00	8392.11	13981.47
70	N89°39'12"E	35.00	8357.07	13981.68
71	N89°43'50"E	35.00	8322.12	13981.89
72	N89°39'12"E	35.00	8287.07	13982.10
73	S89°47'34"W	15.00	8276.88	13792.16
74	S89°47'36"W	15.00	8305.88	13791.99
75	S89°47'31"W	15.00	8340.88	13791.77
76	S89°47'31"W	15.00	8375.88	13791.56
77	S89°47'31"W	15.00	8410.88	13791.35
78	S89°47'31"W	15.00	8459.88	13791.05
79	S89°47'31"W	15.00	8494.88	13790.84

WATER SERVICE TABLE				
LOT #	BEARING	LENGTH	NORTHING	EASTING
80	S89°39'12"W	15.00	8529.92	13790.63
81	S89°47'31"W	15.00	8564.88	13790.42
82	S89°39'12"W	15.00	8599.91	13790.21
83	S89°47'31"W	15.00	8634.88	13790.00
84	S89°39'12"W	15.24	8668.89	13789.79
85	S84°37'31"W	16.04	8707.29	13788.34
86	N84°20'43"E	33.86	8694.86	13739.27
87	N89°43'30"E	35.00	8637.66	13739.98
88	N89°43'50"E	35.00	8602.66	13740.19
89	N89°43'50"E	35.00	8567.66	13740.40
90	N89°39'12"E	35.00	8532.61	13740.61
91	N89°43'50"E	35.00	8497.66	13740.83
92	N89°43'50"E	35.00	8462.66	13741.04
93	N89°39'12"E	35.00	8415.61	13741.32
94	N89°43'50"E	35.00	8380.66	13741.53
95	N89°43'50"E	35.00	8345.66	13741.75
96	N89°39'12"E	35.00	8310.62	13741.96
97	N89°43'50"E	35.00	8275.66	13742.18
98	S74°20'48"W	18.02	8247.06	13563.99
99	S85°35'48"W	14.62	8291.73	13562.35
100	S89°47'31"W	15.00	8326.77	13551.86
101	S89°24'09"W	15.00	8361.70	13551.64
102	S89°47'32"W	15.00	8396.77	13551.43
103	S89°47'35"W	15.00	8431.77	13551.22
104	S89°39'12"W	15.00	8466.80	13551.01
105	S89°47'33"W	15.00	8501.77	13550.80
106	S89°39'12"W	15.00	8536.80	13550.59
107	S89°47'31"W	15.00	8571.77	13550.38
108	S89°47'37"W	14.74	8611.48	13549.87
109	S78°13'07"W	15.32	8639.31	13546.61
110	N80°05'27"E	35.02	8624.43	13498.38
111	N89°43'49"E	35.00	8601.33	13500.19
112	N89°43'50"E	35.00	8566.33	13500.41
113	N89°43'47"E	35.00	8531.33	13500.71
114	N89°44'22"E	35.00	8481.34	13500.92
115	N89°43'50"E	35.00	8446.33	13501.13
116	N89°43'50"E	35.00	8411.34	13501.34
117	N89°43'50"E	35.00	8376.34	13501.56
118	N89°43'50"E	35.00	8341.34	13501.77
119	N89°43'49"E	35.00	8312.90	13501.94
120	N85°35'48"W	35.13	8274.48	13503.78
121	N74°20'48"E	35.00	8240.52	13510.77
122	S74°20'48"W	14.98	8459.21	13316.71
123	S74°20'48"W	14.97	8492.91	13307.27
124	S74°20'48"W	14.97	8526.61	13297.82
125	S74°20'48"W	14.99	8562.45	13282.17
19A	N74°20'48"E	23.97	8615.68	13226.42
19C	S60°39'12"E	23.91	8622.14	13249.50
18A	S60°39'12"E	23.04	8630.63	13255.27

MATCHLINE
SEE SHEET 11 - WT09

NOTES:
1. DEVELOPER IS RESPONSIBLE FOR INSTALLING WATERLINE THROUGH FRONTSIDE DRIVE NO MORE THAN 18 MONTHS AFTER CONSTRUCTION OF TRAILS AT ASPEN RIDGE FILING 4 TO PROVIDE WATER LOOPING.



THE LOCATIONS OF EXISTING ABOVE GROUND AND UNDERGROUND UTILITIES ARE SHOWN IN AN APPROXIMATE WAY ONLY. THE CONTRACTOR SHALL DETERMINE THE EXACT LOCATION OF ALL EXISTING UTILITIES BEFORE COMMENCING WORK. THE CONTRACTOR SHALL BE FULLY RESPONSIBLE FOR ANY AND ALL DAMAGES WHICH MAY BE CAUSED BY HIS FAILURE TO EXACTLY LOCATE AND PRESERVE ANY AND ALL ABOVE GROUND AND UNDERGROUND UTILITIES.

THE WIDEFIELD WATER AND SANITATION DISTRICT RECOGNIZES THE DESIGN ENGINEER AS HAVING RESPONSIBILITY FOR THE DESIGN AND HAS LIMITED ITS SCOPE OF REVIEW ACCORDINGLY.

**WIDEFIELD WATER AND SANITATION DISTRICT
WASTEWATER DESIGN APPROVAL**

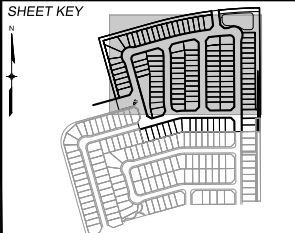
DATE: _____ BY: _____

PROJECT NUMBER: _____

IN CASE OF ERRORS OR OMISSIONS WITH THE WATER DESIGN AS SHOWN ON THIS DOCUMENT THE STANDARDS AS DEFINED IN THE "RULES AND REGULATIONS FOR INSTALLATION OF WASTEWATER MAINS AND SERVICES" SHALL RULE.

APPROVAL EXPIRES 180 DAYS FROM DESIGN APPROVAL

REFERENCE DRAWINGS	NO.	DATE	DESCRIPTION	BY
	1	10/14/2022	SHORTENED WATER SERVICES TO PROPERTY LINE	CWV
COMPUTER FILE MANAGEMENT				
FILE NAME: s:\21.886.038 (trails f6)\100 Dwg\104 plan sets\construction plans\utility plans\water plan\WT06.dwg				
CTB FILE: Matrix(black).ctb				
PLOT DATE: July 28, 2025 9:46:54 AM				
THIS DRAWING IS CURRENT AS OF PLOT DATE AND MAY BE SUBJECT TO CHANGE.				



BENCHMARK
COLORADO SPRINGS UTILITIES (FIMS) MONUMENT F206
A BERNTSEN TOP SECURITY MONUMENT SYSTEM WITH A 3.5-INCH DIAMETER ALUMINUM CAP IN A ROAD BOX, LOCATED ON THE NORTHWEST CORNER OF FONTAINE BOULEVARD AND POWERS BOULEVARD.
ELEVATION - 5897.89' U.S. SURVEY FT

BASIS OF BEARING
BEARINGS ARE BASED ON THE NORTH LINE OF THE NORTHWEST QUARTER OF SECTION 9, TOWNSHIP 15 SOUTH, RANGE 05 WEST OF THE 6TH P.M. SAID LINE BEARS S89°51'23"E FROM THE NORTHWEST CORNER OF SAID SECTION 9 (2 1/2' AULM. CAP PLS 17664) TO THE N 1/4 CORNER OF SAID SECTION 9 (3 1/2' AULM. CAP PLS 10377)



TRAILS AT ASPEN RIDGE			
FILING NO. 4 PUBLIC WATERLINE PLANS			
WATERLINE SERVICE PLAN			
DESIGNED BY: JSE	SCALE: 1" = 50'	DATE ISSUED: JULY, 2025	DRAWING No. WT10
DRAWN BY: JSE	HORIZ: 1" = 50'	SHEET: 12 OF 12	
CHECKED BY: NMS	VERT: N/A		