



Know what's below.
Call before you dig.

TRAILS AT ASPEN RIDGE FILING NO. 6

EL PASO COUNTY, CO
FINAL LANDSCAPE PLANS

LANDSCAPE SETBACKS:

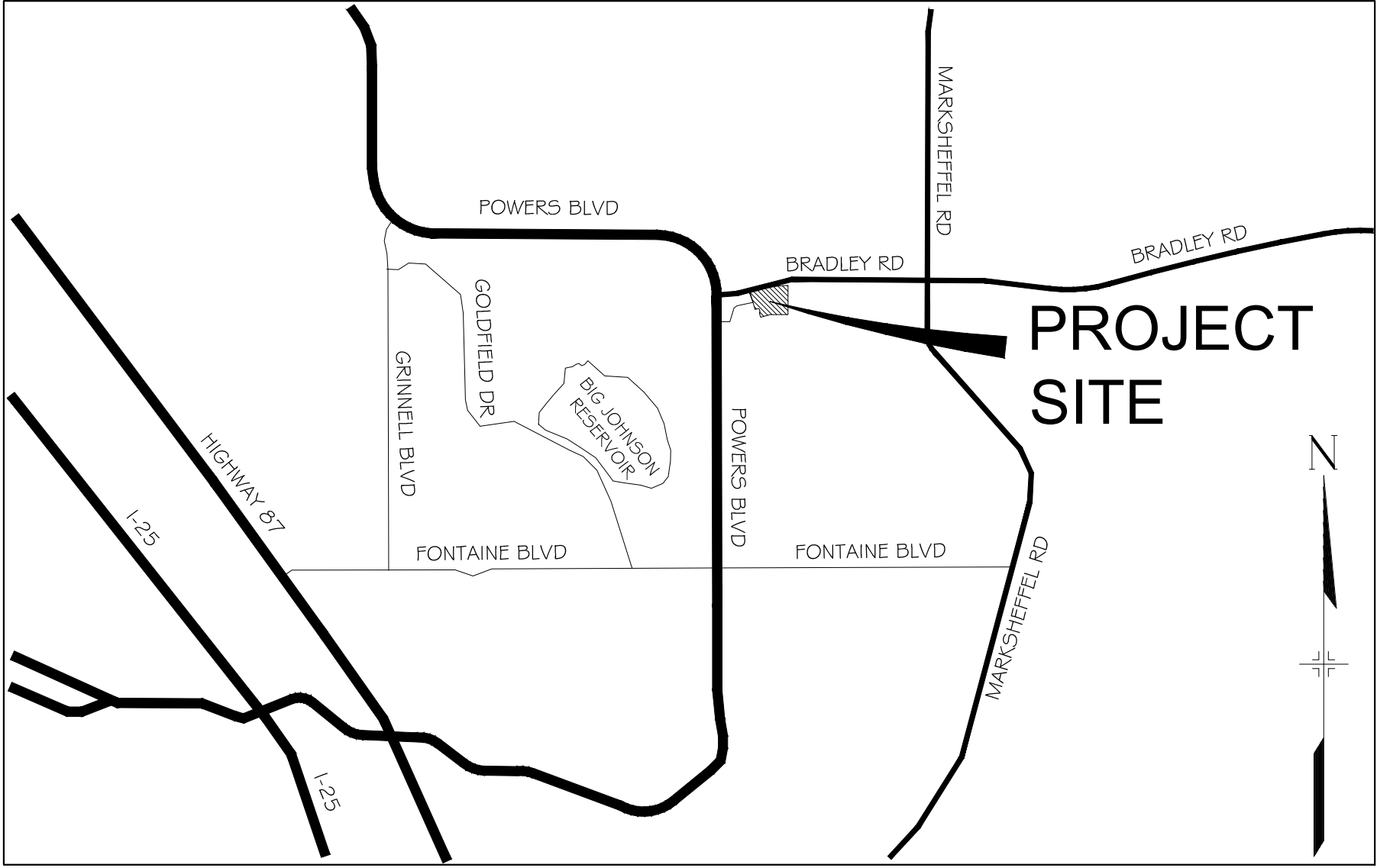
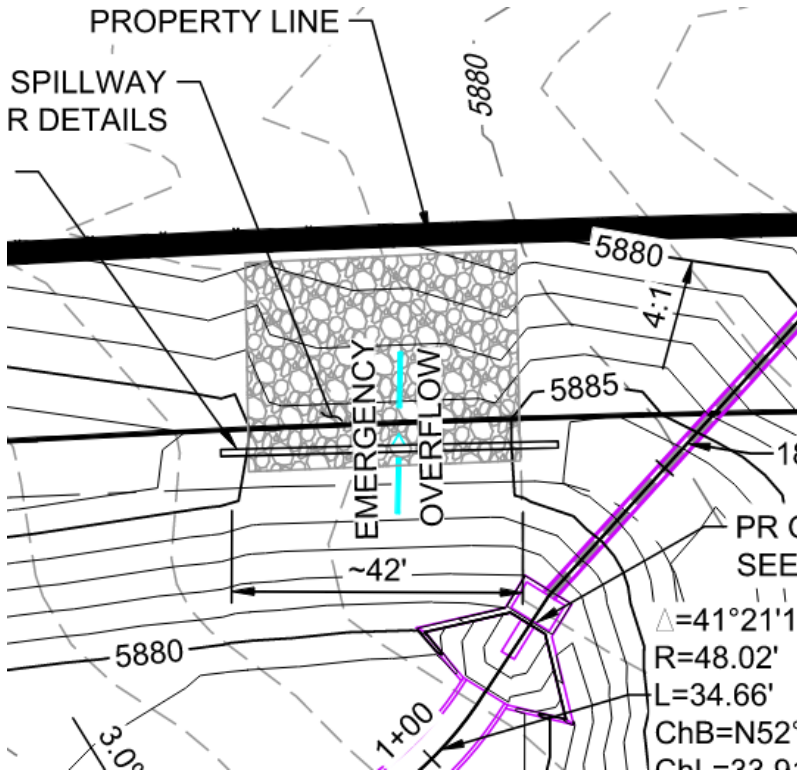
STREET NAME OR ZONE BOUNDARY:	FRONTSIDE DR.	BRADLEY RD.
ZONE DISTRICT BOUNDARY:	NO	NO
STREET CLASSIFICATION:	NON-ARTERIAL	RURAL MINOR ARTERIAL
SETBACK DEPTH REQUIRED/PROVIDED:	10' / 10'	20' / 25'
LINEAR FOOTAGE:	580'	1069'
TREE/FEET REQUIRED:	1/ 30 LF	1/ 25 LF
NUMBER OF TREES REQUIRED/PROVIDED:	20 / 17	43 / 43
SHRUB SUBSTITUTES REQUIRED/PROVIDED:	0 / 0	0 / 0
ORNAMENTAL GRASS SUBSTITUTES REQ./PROV.	0 / 0	0 / 0
PLANT ABBREVIATION DENOTED ON PLAN:	FS	BR
% GROUND PLANE VEG. REQUIRED/PROVIDED:	75%/100%	75%/100%

* TREES LABELED "PP": POCKET PARK
* TREES LABELED "EX": EXTRA

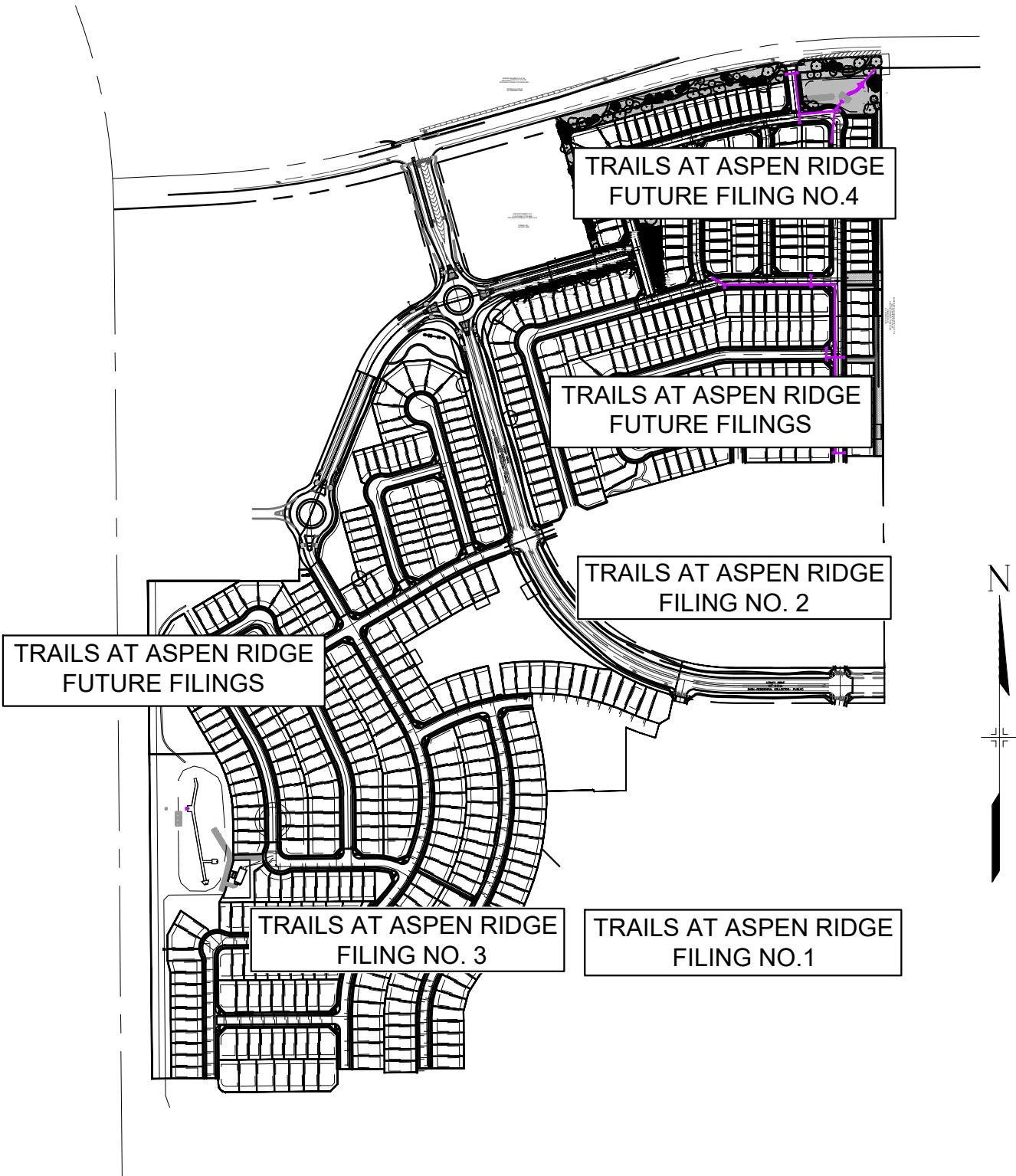
SHEET INDEX:

LS01	LANDSCAPE PLAN TITLE SHEET
LS02-04	LANDSCAPE PLANTING PLAN
LS05	LANDSCAPE NOTES & DETAILS

Update landscaping.
This is in conflict with
the emergency
spillway.



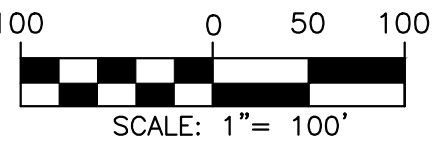
VICINITY MAP
N.T.S.



SITE MAP
1" = 500

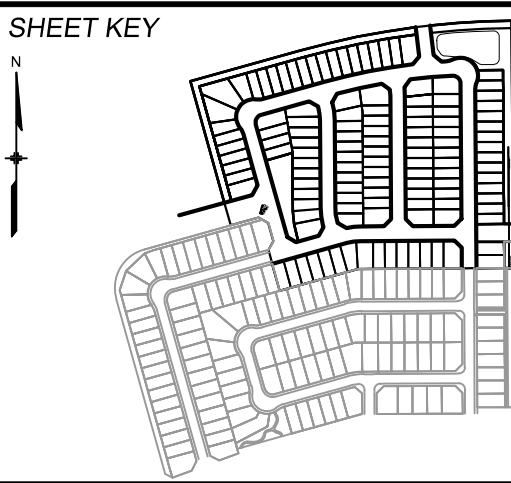


1 OVERALL SITE PLAN
1" = 100'



SCALE: 1" = 100'

REFERENCE DRAWINGS			
No.	DATE	DESCRIPTION	BY
COMPUTER FILE MANAGEMENT			
FILE NAME: S:\20.886.028 Trails PUDSP Major Amend\100 Dwg\102 Xref\X-886-PR-LA - F6 - LANDSCAPE.dwg			
CTB FILE: Matrix(black).ctb			
PLOT DATE: June 10, 2021 8:59:08 AM			
THIS DRAWING IS CURRENT AS OF PLOT DATE AND MAY BE SUBJECT TO CHANGE.			



BENCHMARK
COLORADO SPRINGS UTILITIES (FIMS) MONUMENT F206
A BERNTSEN TOP SECURITY MONUMENT SYSTEM WITH A 3.5-INCH DIAMETER ALUMINUM CAP IN A ROAD BOX, LOCATED ON THE NORTHWEST CORNER OF FONTAINE BOULEVARD AND POWERS BOULEVARD.
ELEVATION - 5897.89' U.S. SURVEY FT

BASIS OF BEARING
BEARINGS ARE BASED ON THE NORTH LINE OF THE NORTHWEST QUARTER OF SECTION 9, TOWNSHIP 15 SOUTH, RANGE 65 WEST OF THE 6TH P.M. SAID LINE BEARS S89°51'23"E FROM THE NORTHWEST CORNER OF SAID SECTION 9 (2 1/2" AULM. CAP PLS 17664) TO THE N 1/4 CORNER OF SAID SECTION 9 (3 1/4" AULM. CAP PLS 10377)



SEAL			
PRELIMINARY THIS DRAWING HAS NOT BEEN APPROVED BY GOVERNING AGENCIES AND IS SUBJECT TO CHANGE			
FOR AND ON BEHALF OF MATRIX DESIGN GROUP, INC. PROJECT No. 20.886.028			

FILING 6 TRAILS AT ASPEN RIDGE					
FINAL LANDSCAPE PLANS					
LANDSCAPE COVER SHEET					
DESIGNED BY:	##	SCALE	DATE ISSUED:	JUNE 9, 2021	DRAWING No.
CHECKED BY:	##	HORIZ. N/A	SHEET	01 OF 05	LS.01

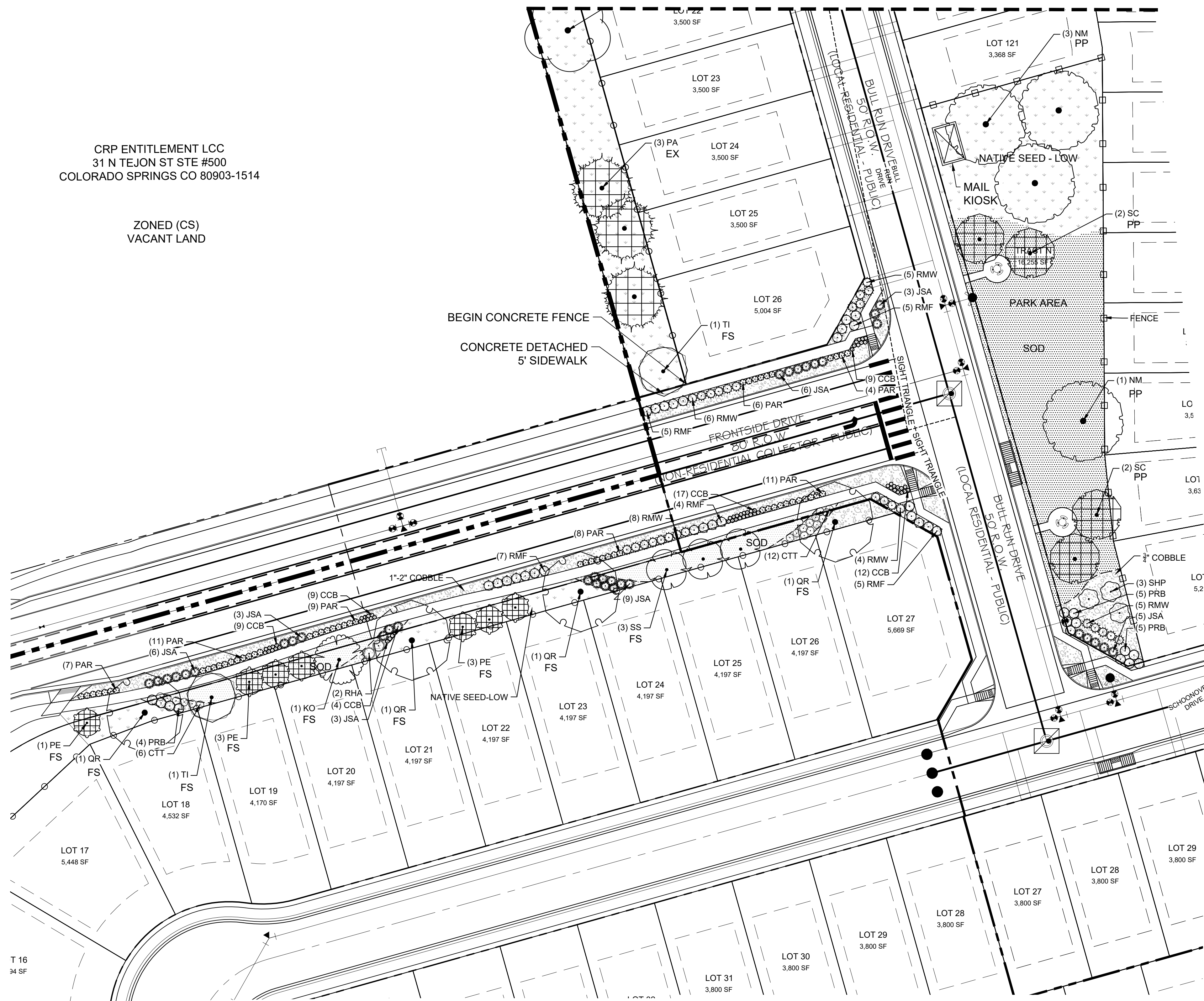


Know what's below.
Call before you dig.

CRP ENTITLEMENT LCC
31 N TEJON ST STE #500
COLORADO SPRINGS CO 80903-1514

ZONED (CS)
VACANT LAND

SEE SHEET 1/LS.02



CONCEPT PLANT SCHEDULE

	SOD	11,623 SF
	NATIVE SEED-LOW	92,679 SF
	3/4" ROCK	14,194 SF
	1 1/2" ROCK	13,841 SF
	NATIVE SEED-W/WILDFLOWERS	19,316 SF
	NATIVE SEED- DETENTION	19,642 SF

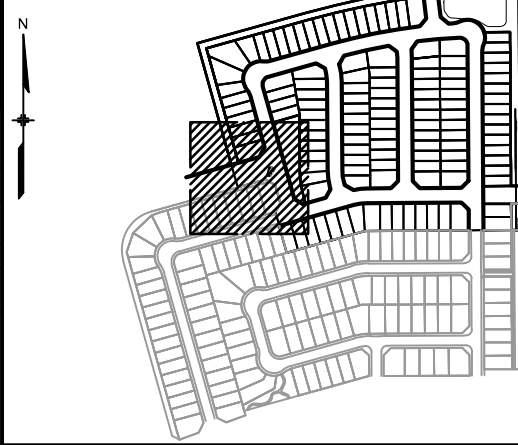
PLANT SCHEDULE

TREES	CODE	QTY	BOTANICAL / COMMON NAME	PLANTING SIZE	CONTAINER	MAT. H.	MAT. W.
	NM	4	ACER PLATANOIDES 'DEBORAH' DEBORAH NORWAY MAPLE	2" CAL.	B&B	40'	40'
DECIDUOUS TREES	CODE	QTY	BOTANICAL / COMMON NAME	PLANTING SIZE	CONTAINER	MAT. H.	MAT. W.
	GK	10	GYMNOCLADUS DIOICA KENTUCKY COFFEETREE	2" CAL.	B&B	50'	40'
	QR	13	QUERCUS RUBRA RED OAK	2" CAL.	B&B	60'	40'
	TI	11	TILIA TOMENTOSA 'STERLING' STERLING SILVER LINDEN	2" CAL.	B&B	40'	25'
EVERGREEN TREES	CODE	QTY	BOTANICAL / COMMON NAME	PLANTING SIZE	CONTAINER	MAT. H.	MAT. W.
	PE	7	PINUS EDULIS PINON PINE	6' HT.	B&B	25'	15'
	PA	20	PINUS NIGRA AUSTRIAN BLACK PINE	6' HT.	B&B	50'	35'
	SC	13	PINUS SYLVESTRIS SCOTCH PINE	6' HT.	B&B	40'	25'
ORNAMENTAL TREES	CODE	QTY	BOTANICAL / COMMON NAME	PLANTING SIZE	CONTAINER	MAT. H.	MAT. W.
	KO	3	KOELREUTERIA PANICULATA GOLDEN RAIN TREE	1.5" CAL.	B&B	25'	25'
	SS	3	MALUS X 'SPRING SNOW' SPRING SNOW CRABAPPLE	1.5" CAL.	B&B	20'	20'
DECIDUOUS SHRUBS	CODE	QTY	BOTANICAL / COMMON NAME	PLANTING SIZE	CONTAINER	MAT. H.	MAT. W.
	CCB	60	CARYOPTERIS X CLANDONENSIS 'BLUE MIST' BLUE MIST BLUEBEARD	#5 CONT.	CONT.	3'	2'
	CTT	18	COTONEASTER ADPRESSUS 'TOM THUMB' EARLY COTONEASTER	#5 CONT.	CONT.	1.5'	3'
	PAR	56	PEROVSKIA ATRIPLICIFOLIA RUSSIAN SAGE	#3 CONT.	CONT.	3'	3'
	PRB	14	PRUNUS BESSEYI SAND CHERRY	#5 CONT.	CONT.	5'	5'
	RHA	2	RHUS AROMATICA 'GRO-LOW' GRO-LOW FRAGRANT SUMAC	#5 CONT.	CONT.	2'	6'
	RMF	26	ROSA MEIDILAND SERIES 'FIRE' FIRE MEIDILAND ROSE	#5 CONT.	CONT.	2'	5'
	RMW	28	ROSA MEIDILAND SERIES 'WHITE' WHITE MEIDILAND ROSE	#5 CONT.	CONT.	1.5'	5'
	SHP	3	SYRINGA X HYACINTHIFLORA 'POCAHONTAS' POCAHONTAS LILAC	#5 CONT.	CONT.	10'	10'
EVERGREEN SHRUBS	CODE	QTY	BOTANICAL / COMMON NAME	PLANTING SIZE	CONTAINER	MAT. H.	MAT. W.
	JSA	35	JUNIPERUS SABINA 'ARCADIA' ARCADIA JUNIPER	#5 CONT.	CONT.	1'	5'

1 PLANTING & SITE PLAN
1" = 30'

REFERENCE DRAWINGS					
No.	DATE	DESCRIPTION REVISIONS	BY		
COMPUTER FILE MANAGEMENT					
FILE NAME: S:\20.886.028 Trails PUDSP Major Amend\100 Dwg\102 Xref\X-886-PR-LA - F6 - LANDSCAPE.dwg					
CTB FILE: Matrix(black).ctb					
PLOT DATE: June 9, 2021 11:24:50 AM					
THIS DRAWING IS CURRENT AS OF PLOT DATE AND MAY BE SUBJECT TO CHANGE.					

SHEET KEY



BENCHMARK

COLORADO SPRINGS UTILITIES (FIMS) MONUMENT F206
A BERNTSEN TOP SECURITY MONUMENT SYSTEM WITH A 3.5-INCH DIAMETER ALUMINUM CAP IN A
ROAD BOX, LOCATED ON THE NORTHWEST CORNER OF FONTAINE BOULEVARD AND POWERS
BOULEVARD.
ELEVATION - 5897.89' U.S. SURVEY FT

BASIS OF BEARING

BEARINGS ARE BASED ON THE NORTH LINE OF THE NORTHWEST QUARTER OF SECTION 9,
TOWNSHIP 15 SOUTH, RANGE 65 WEST OF THE 6TH P.M. SAID LINE BEARS S89°51'23"E FROM THE
NORTHWEST CORNER OF SAID SECTION 9 (2 1/2" AULM. CAP PLS 17664) TO THE N 1/4 CORNER OF SAID
SECTION 9 (3 1/4" AULM. CAP PLS 10377)

PREPARED BY:



SEAL

PRELIMINARY
THIS DRAWING HAS NOT
BEEN APPROVED BY
GOVERNING AGENCIES AND
IS SUBJECT TO CHANGE

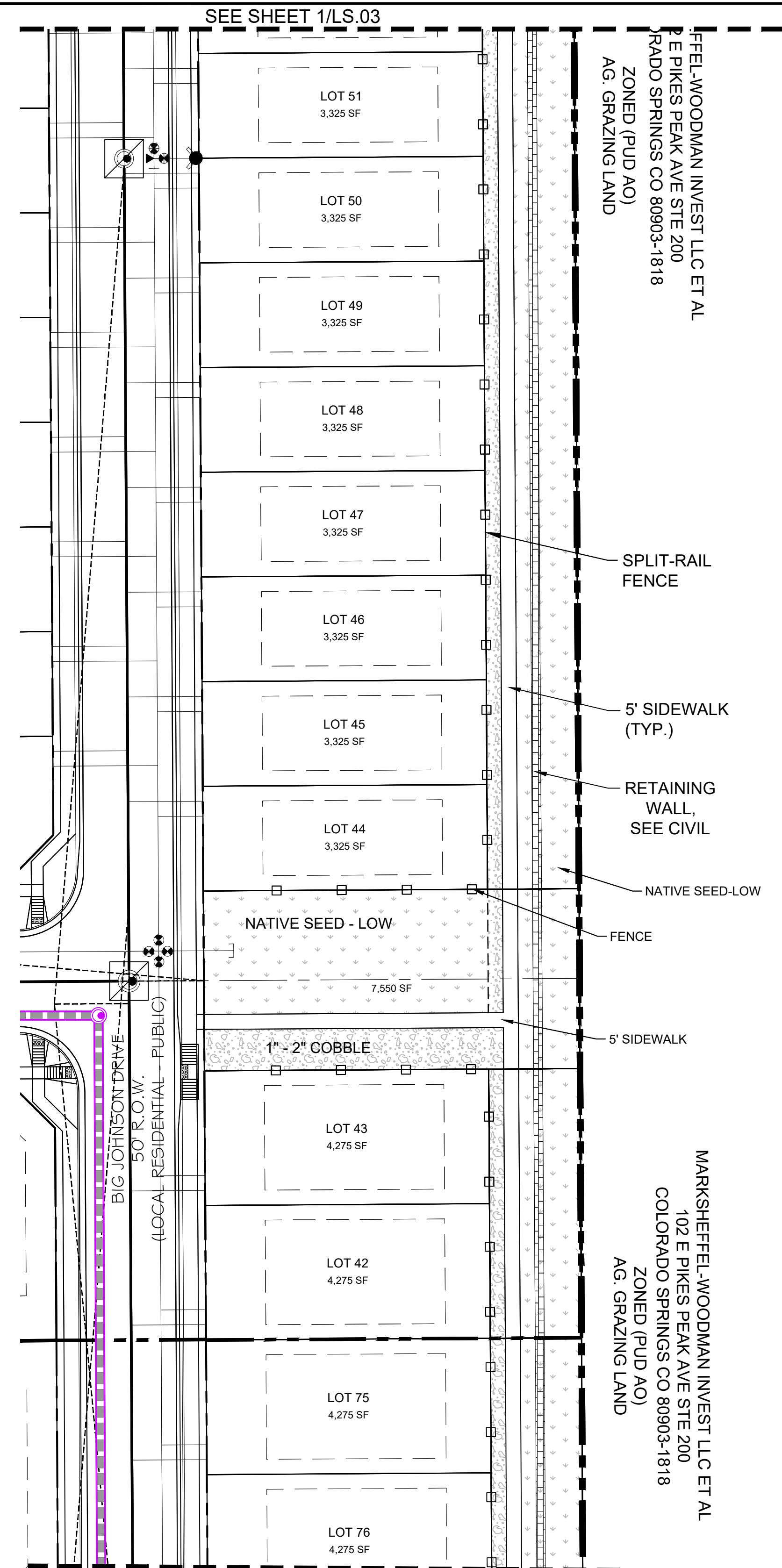
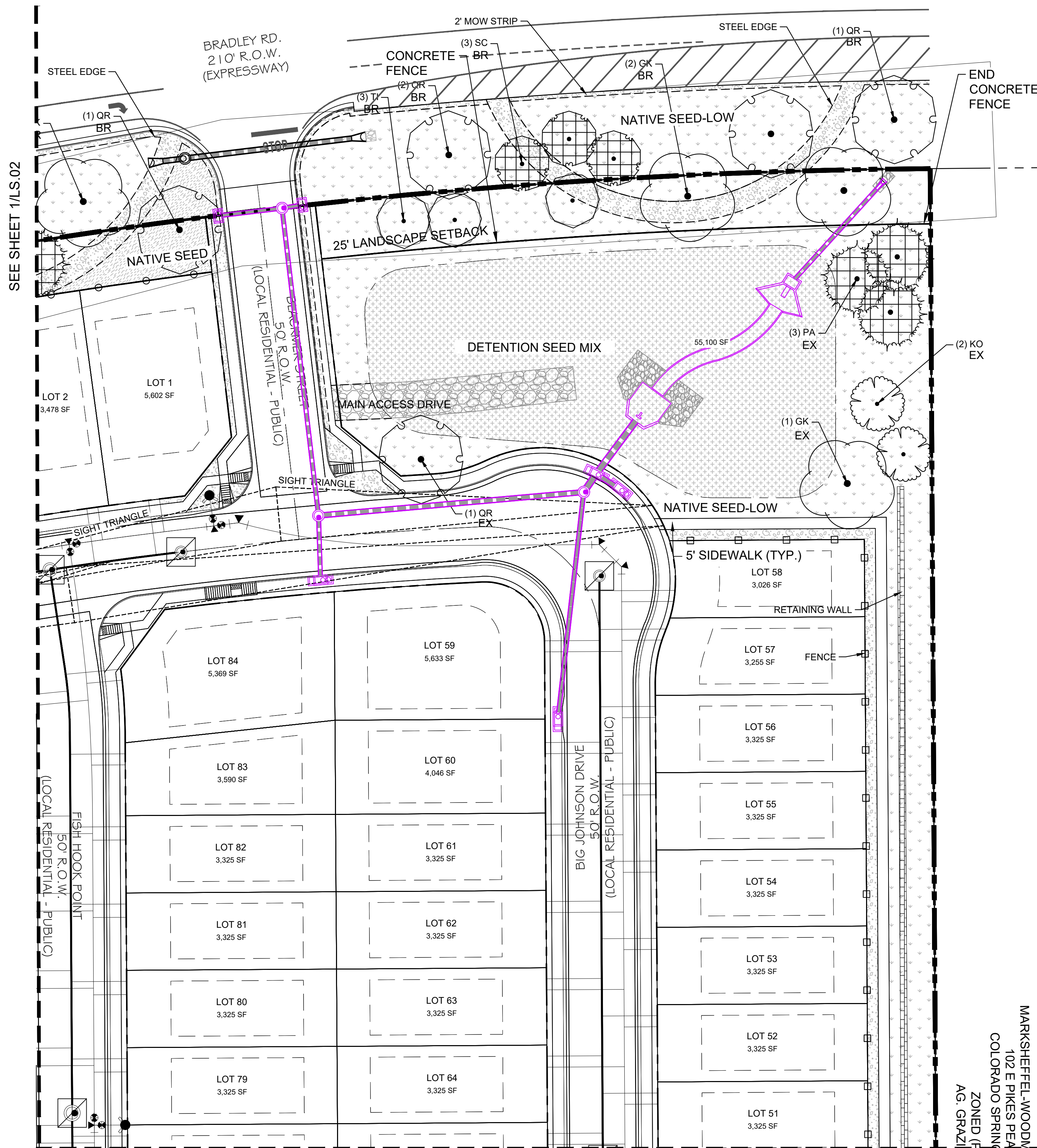
FOR AND ON BEHALF OF
MATRIX DESIGN GROUP, INC.
PROJECT No. 20.886.028

DESIGNED BY: ## SCALE DATE ISSUED: JUNE 9, 2021 DRAWING No. LS.03
CHECKED BY: ## HORIZ. N/A SHEET 03 OF 05

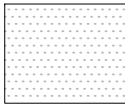
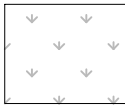
FILING 6 TRAILS AT ASPEN RIDGE

FINAL LANDSCAPE PLANS

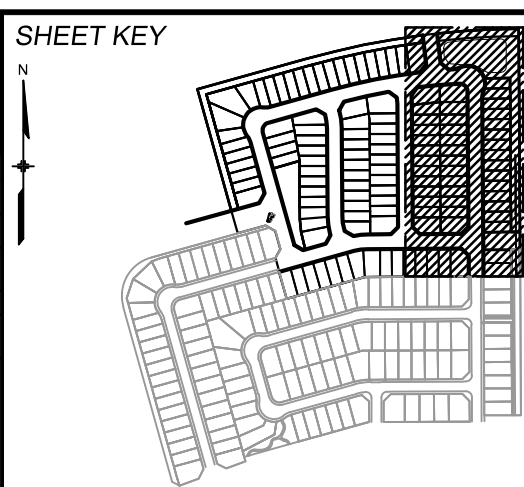
LANDSCAPE PLANTING PLAN

Know what's below.
Call before you dig.1 PLANTING & SITE PLAN
1" = 30'2 PLANTING & SITE PLAN
1" = 30'

CONCEPT PLANT SCHEDULE

	<u>SOD</u> -	11,623 SF
	<u>NATIVE SEED-LOW</u> -	92,679 SF

REFERENCE DRAWINGS			
No.	DATE	DESCRIPTION	BY
COMPUTER FILE MANAGEMENT			
FILE NAME: S:\20.886.028 Trails PUDSP Major Amend\100 Dwg\102 Xref\X-886-PR-LA - F6 - LANDSCAPE.dwg			
CTB FILE: Matrix(black).ctb			
PLOT DATE: June 9, 2021 11:25:02 AM			
THIS DRAWING IS CURRENT AS OF PLOT DATE AND MAY BE SUBJECT TO CHANGE.			



BENCHMARK
COLORADO SPRINGS UTILITIES (FIMS) MONUMENT F206
A BERNTSEN TOP SECURITY MONUMENT SYSTEM WITH A 3.5-INCH DIAMETER ALUMINUM CAP IN A ROAD BOX, LOCATED ON THE NORTHWEST CORNER OF FONTAINE BOULEVARD AND POWERS BOULEVARD.
ELEVATION - 5897.89' U.S. SURVEY FT

BASIS OF BEARING
BEARINGS ARE BASED ON THE NORTH LINE OF THE NORTHWEST QUARTER OF SECTION 9, TOWNSHIP 15 SOUTH, RANGE 65 WEST OF THE 6TH P.M. SAID LINE BEARS S89°51'23"E FROM THE NORTHWEST CORNER OF SAID SECTION 9 (2 1/2" AULM. CAP PLS 17664) TO THE N 1/4 CORNER OF SAID SECTION 9 (3 1/4" AULM. CAP PLS 10377)

PREPARED BY:



SEAL

PRELIMINARY
THIS DRAWING HAS NOT
BEEN APPROVED BY
GOVERNING AGENCIES AND
IS SUBJECT TO CHANGE

FOR AND ON BEHALF OF
MATRIX DESIGN GROUP, INC.
PROJECT No. 20.886.028

DESIGNED BY:	##	SCALE	DATE ISSUED:	JUNE 9, 2021	DRAWING No.
CHECKED BY:	##	HORIZ. N/A	SHEET	04 OF 05	LS.04

FILING 6 TRAILS AT ASPEN RIDGE

FINAL LANDSCAPE PLANS

LANDSCAPE PLANTING PLAN

