



# TRAILS AT ASPEN RIDGE - FILING NO. 4

EL PASO COUNTY, COLORADO

## 8" PUBLIC SANITARY MAIN PLANS

JULY, 2025

DWG No.	SHEET NAME	SHEET No.
TS01	TITLE SHEET	1
GN01	GENERAL NOTES, LEGEND & ABBREVIATIONS	2
SS01 - SS08	WASTEWATER PLAN & PROFILE	3 - 10
SS09 - SS10	SANITARY SERVICE PLAN	11 - 12

**OWNER** VIVA LAND VENTURES, LP  
11427 ROJAS DRIVE  
EL PASO, TX 79936

**DEVELOPER** COLA, LLC  
555 MIDDLE CREEK PKWY, SUITE 500  
COLORADO SPRINGS, CO 80910

**CIVIL ENGINEER** MATRIX DESIGN GROUP  
2435 RESEARCH PARKWAY, SUITE 300  
COLORADO SPRINGS, CO 80920

**WATER & SANITARY SEWER** WIDEFIELD WATER AND SANITATION DISTRICT  
8495 FONTAINE BOULEVARD  
COLORADO SPRINGS, CO 80925  
ROBERT BANNISTER, (719) 390-7111

**ELECTRIC** MOUNTAIN VIEW ELECTRIC ASSOCIATION  
(719) 495-2283

**GAS** COLORADO SPRINGS UTILITIES  
1521 HANCOCK EXPRESSWAY  
COLORADO SPRINGS, CO  
MARY HOAGLUND (719) 668-4083

**STREET** EL PASO COUNTY PUBLIC SERVICES DEPARTMENT  
(719) 520-6460

**DRAINAGE** EL PASO COUNTY PUBLIC SERVICES DEPARTMENT  
(719) 520-6460

**FIRE DEPARTMENT** SECURITY FIRE DEPARTMENT  
400 SECURITY BOULEVARD  
SECURITY, CO 80911  
(719) 392-7121

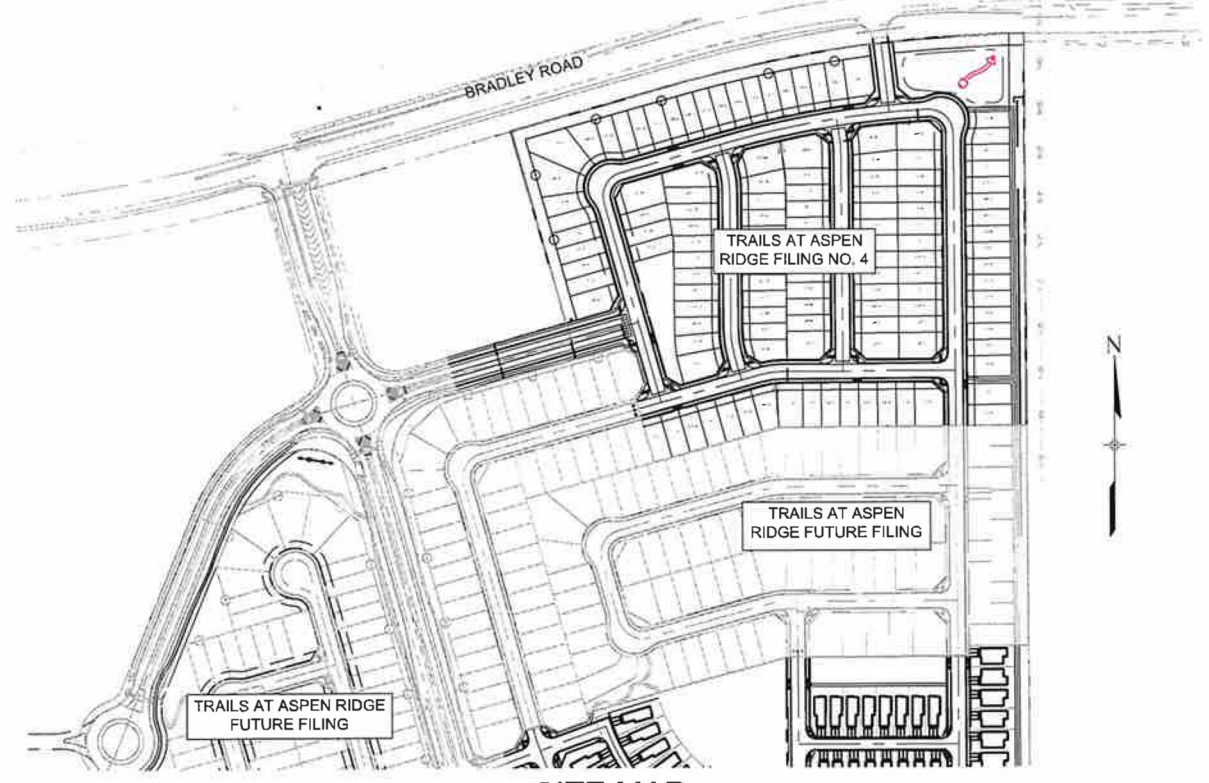
**EL PASO COUNTY:**

COUNTY PLAN REVIEW IS PROVIDED ONLY FOR GENERAL CONFORMANCE WITH COUNTY DESIGN CRITERIA. THE COUNTY IS NOT RESPONSIBLE FOR THE ACCURACY AND ADEQUACY OF THE DESIGN, DIMENSIONS, AND/OR ELEVATIONS WHICH SHALL BE CONFIRMED AT THE JOB SITE. THE COUNTY THROUGH THE APPROVAL OF THIS DOCUMENT ASSUMES NO RESPONSIBILITY FOR COMPLETENESS AND/OR ACCURACY OF THIS DOCUMENT.

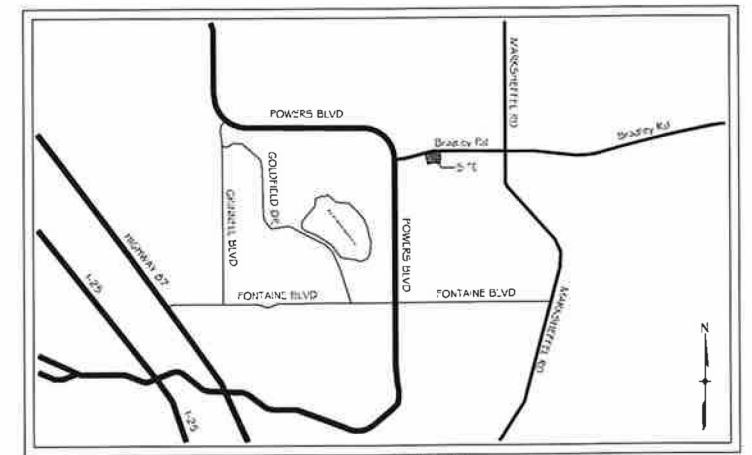
FILED IN ACCORDANCE WITH THE REQUIREMENTS OF THE EL PASO COUNTY LAND DEVELOPMENT CODE, DRAINAGE CRITERIA MANUAL, VOLUMES 1 AND 2, AND ENGINEERING CRITERIA MANUAL AS AMENDED.

IN ACCORDANCE WITH ECM SECTION 1.12, THESE CONSTRUCTION DOCUMENTS WILL BE VALID FOR CONSTRUCTION FOR A PERIOD OF 2 YEARS FROM THE DATE SIGNED BY THE EL PASO COUNTY ENGINEER. IF CONSTRUCTION HAS NOT STARTED WITHIN THOSE 2 YEARS, THE PLANS WILL NEED TO BE RESUBMITTED FOR APPROVAL, INCLUDING PAYMENT OF REVIEW FEES AT THE PLANNING AND COMMUNITY DEVELOPMENT DIRECTORS DISCRETION.

JOSHUA PALMER, P.E. 5/13/2026  
COUNTY ENGINEER / ECM ADMINISTRATOR DATE



**SITE MAP**  
1" = 200'



**VICINITY MAP**  
N.T.S.

**DISTRICT APPROVALS:**

THE WIDEFIELD WATER AND SANITATION DISTRICT RECOGNIZES THE DESIGN ENGINEER AS HAVING RESPONSIBILITY FOR THE DESIGN AND HAS LIMITED ITS SCOPE OF REVIEW ACCORDINGLY.

WIDEFIELD WATER AND SANITATION DISTRICT  
WATER DESIGN APPROVAL

DATE: 10-06-2025 BY: Robert K Bannister

PROJECT NUMBER: \_\_\_\_\_

IN CASE OF ERRORS OR OMISSIONS WITH THE WATER DESIGN AS SHOWN ON THIS DOCUMENT THE STANDARDS AS DEFINED IN THE "RULES AND REGULATIONS FOR INSTALLATION OF WATER MAINS AND SERVICES" SHALL RULE.

APPROVAL EXPIRES 180 DAYS FROM DESIGN APPROVAL

**WATER AND SANITARY SEWER APPROVAL**

ANY CHANGES OR ALTERATIONS AFFECTING THE GRADE, ALIGNMENT, ELEVATION, AND/OR DEPTH OF COVER OF ANY WATER OR SEWER MAINS OR OTHER APPURTENANCE SHOWN ON THIS DRAWING SHALL BE THE RESPONSIBILITY OF THE OWNER/DEVELOPER. THE OWNER/DEVELOPER SHALL BE RESPONSIBLE FOR ALL OPERATION DAMAGES AND DEFECTS IN INSTALLATION AND MATERIAL FOR MAINS AND SERVICES FROM THE DATE OF APPROVAL UNTIL FINAL ACCEPTANCE IS ISSUED.

SIGNED: [Signature] DATE: 10/30/25  
OWNER/DEVELOPER

PRINT NAME: Richard A. van Seenus

DBA: COLA, LLC

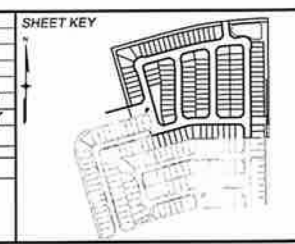
ADDRESS: 555 Middle Creek Parkway #500  
Colorado Springs, CO 80921

THE LOCATIONS OF EXISTING ABOVE GROUND AND UNDERGROUND UTILITIES ARE SHOWN IN AN APPROXIMATE WAY ONLY. THE CONTRACTOR SHALL DETERMINE THE EXACT LOCATION OF ALL EXISTING UTILITIES BEFORE COMMENCING WORK. THE CONTRACTOR SHALL BE FULLY RESPONSIBLE FOR ANY AND ALL DAMAGES WHICH MIGHT BE CAUSED BY HIS FAILURE TO EXACTLY LOCATE AND PRESERVE ANY AND ALL ABOVE GROUND AND UNDERGROUND UTILITIES.

REFERENCE DRAWINGS	No.	DATE	DESCRIPTION	CV	BY
	1	10/14/2022	SHORTENED WATER SERVICES TO PROPERTY LINE		

**COMPUTER FILE MANAGEMENT**

FILE NAME: S:\21 895 038 (Trails F6)\100 Dwg\104 Plan Sets\Construction Plans\Utility Plans\Sanitary Plan\TS01.dwg  
CTB FILE: Matrix(black).ctb  
PLOT DATE: July 28, 2025 9:09:03 AM  
THIS DRAWING IS CURRENT AS OF PLOT DATE AND MAY BE SUBJECT TO CHANGE.



**BENCHMARK**  
COLORADO SPRINGS UTILITIES (FIMS) MONUMENT F206  
A BERTSEN TOP SECURITY MONUMENT SYSTEM WITH A 3.5-INCH DIAMETER ALUMINUM CAP IN A ROAD BOX, LOCATED ON THE NORTHWEST CORNER OF FONTAINE BOULEVARD AND POWERS BOULEVARD.  
ELEVATION - 5897.89' U.S. SURVEY FT

**BASIS OF BEARING**  
BEARINGS ARE BASED ON THE NORTH LINE OF THE NORTHWEST QUARTER OF SECTION 9, TOWNSHIP 15 SOUTH, RANGE 65 WEST OF THE 6TH P.M. SAID LINE BEARS S89°51'23"E FROM THE NORTHWEST CORNER OF SAID SECTION 9 (2 1/2" AULM. CAP PLS 17664) TO THE N 1/4 CORNER OF SAID SECTION 9 (3 1/2" AULM. CAP PLS 10377)

PREPARED BY:

SEAL

<b>TRAILS AT ASPEN RIDGE</b>			
FILING NO. 4			
8" SANITARY SEWER PLANS			
TITLE SHEET			
DESIGNED BY: JLV	CHECKED BY: NMS	SCALE: HORIZ: N/A, VERT: N/A	DATE ISSUED: JULY, 2025
			1 OF 12
			DRAWING No: TS01



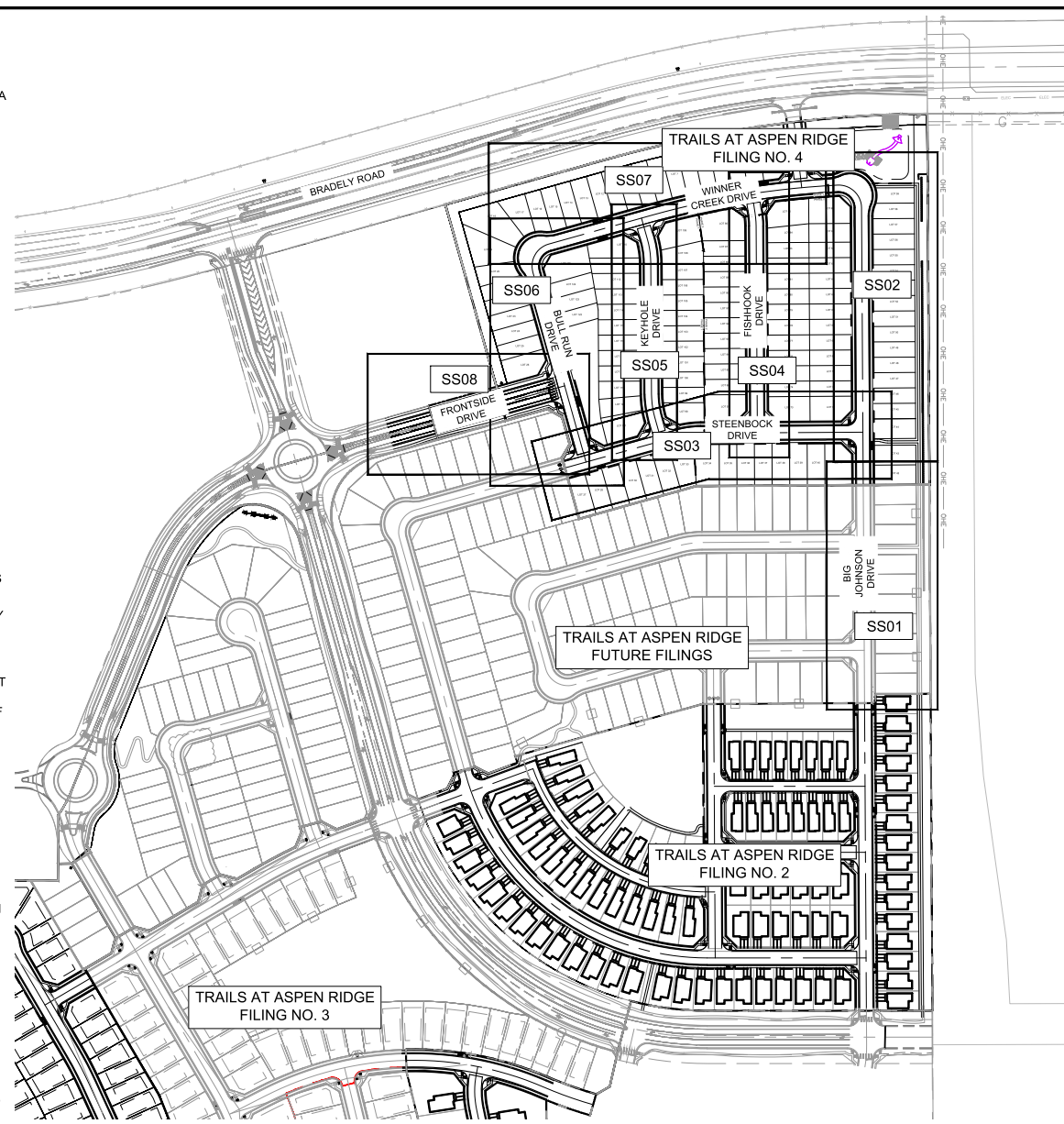
Know what's below. Call before you dig.

**WIDEFIELD WATER AND SANITATION DISTRICT GENERAL NOTES**

- ALL UTILITY CONSTRUCTION TO BE CONDUCTED IN CONFORMANCE WITH THE CURRENT WIDEFIELD WATER AND SANITATION DISTRICT SPECIFICATIONS. COMPACTION REQUIREMENTS SHALL BE 95% STANDARD PROCTOR AS DETERMINED BY ASTM D698, UNLESS OTHERWISE APPROVED BY THE WIDEFIELD WATER AND SANITATION DISTRICT OR A HIGHER STANDARD IS IMPOSED BY ANOTHER AGENCY HAVING RIGHT-OF-WAY JURISDICTION.
- ALL MATERIALS AND WORKMANSHIP SHALL BE SUBJECT TO INSPECTION BY THE WIDEFIELD WATER AND SANITATION DISTRICT. THE WIDEFIELD WATER AND SANITATION DISTRICT RESERVES THE RIGHT TO ACCEPT OR REJECT ANY SUCH MATERIALS AND WORKMANSHIP THAT DOES NOT CONFORM TO ITS STANDARDS AND SPECIFICATIONS.
- THE DEVELOPER OR HIS ENGINEER HAS LOCATED ALL FIRE HYDRANTS AND FUTURE SERVICE STUBS. ANY REQUIRED REALIGNMENT, EITHER HORIZONTAL OR VERTICAL, SHALL BE AT THE EXPENSE OF THE DEVELOPER.
- ALL DUCTILE IRON PIPE, TO INCLUDE FITTINGS, VALVES AND FIRE HYDRANTS WILL BE WRAPPED WITH POLYETHYLENE TUBING, AND ELECTRICALLY ISOLATED.
- ALL DUCTILE IRON PIPE AND FITTINGS SHALL BE DOUBLE BONDED. SPECIFICATIONS FOR CATHODIC PROTECTION ON BOTH DIP MAINS AND PVC MAINS IS SPECIFIED IN THE STANDARDS AND SPECIFICATIONS.
- PVC MAIN LINES SHALL BE INSTALLED WITH COATED NO. 12 TRACER WIRE.
- THE CONTRACTOR IS REQUIRED TO NOTIFY THE WIDEFIELD WATER AND SANITATION DISTRICT (390-7111) A MINIMUM OF 48 HOURS AND A MAXIMUM OF 96 HOURS PRIOR TO THE START OF CONSTRUCTION. THE CONTRACTOR SHALL ALSO NOTIFY AFFECTED UTILITY COMPANIES 48 HOURS PRIOR TO CONSTRUCTION ADJACENT TO THE KNOWN UTILITY LINES.
- THE LOCATION OF ALL UTILITIES AS SHOWN ON THESE DRAWINGS ARE APPROXIMATE ONLY. THE LOCATION OF ALL UTILITIES SHALL BE VERIFIED PRIOR TO CONSTRUCTION BY THE CONTRACTOR.
- THE CONTRACTOR SHALL FIELD EXCAVATE AND VERIFY THE VERTICAL AND HORIZONTAL LOCATION OF ALL TIE-INS. CONTRACTOR SHALL NOTIFY THE WIDEFIELD WATER AND SANITATION DISTRICT AND THE ENGINEER OF THE FIELD VERIFIED INFORMATION PRIOR TO CONSTRUCTION.
- ALL BENDS SHALL BE FIELD STAKED PRIOR TO CONSTRUCTION.
- ANY WATER UTILITY MATERIAL REMOVED AND NOT REUSED SHALL BE RETURNED TO THE WIDEFIELD WATER AND SANITATION DISTRICT IF THE DISTRICT SO REQUESTS.
- THE CONTRACTOR SHALL AT HIS EXPENSE SUPPORT AND PROTECT ALL UTILITY MAINS SO THAT THEY WILL FUNCTION CONTINUOUSLY DURING CONSTRUCTION. SHOULD A UTILITY MAIN FAIL AS A RESULT OF THE CONTRACTOR'S OPERATION, IT WILL BE REPLACED IMMEDIATELY BY EITHER THE CONTRACTOR OR THE WIDEFIELD WATER AND SANITATION DISTRICT AT FULL COST OF LABOR AND MATERIALS TO THE CONTRACTOR.
- ANY PUMPING OR BYPASS OPERATIONS MUST BE REVIEWED AND APPROVED PRIOR TO EXECUTION BY BOTH THE WIDEFIELD WATER AND SANITATION DISTRICT AND THE ENGINEER.
- CONTRACTOR MUST REPLACE OR REPAIR ANY DAMAGE TO ALL SURFACE IMPROVEMENTS, INCLUDING BUT NOT LIMITED TO FENCES, CURB AND GUTTER AND/OR ASPHALT THAT MAY BE CAUSED DURING CONSTRUCTION.
- ALL WATER LINES 6" AND LARGER, AND ALL SEWER LINES 8" AND LARGER, SHALL HAVE AS "AS-BUILT" PLANS PREPARED AND APPROVED PRIOR TO FINAL ACCEPTANCE BY THE WIDEFIELD WATER AND SANITATION DISTRICT.
- PRIOR TO CONSTRUCTION, A PRE-CONSTRUCTION CONFERENCE IS REQUIRED A MINIMUM OF 72 HOURS IN ADVANCE OF COMMENCEMENT OF WORK. TO SET THE PRE-CONSTRUCTION CONFERENCE, CONTACT ROB BANNISTER, DISTRICT ENGINEER AT (719) 390-7111 OF THE WIDEFIELD WATER AND SANITATION DISTRICT FOR A TIME. NO PRE-CONSTRUCTION CONFERENCE TIMES WILL BE SET UNTIL 4 SETS OF SIGNED DRAWINGS ARE RECEIVED BY THE WIDEFIELD W & S DISTRICT, PRE-CONSTRUCTION DATE/INITIALS.

**EL PASO COUNTY STANDARD CONSTRUCTION NOTES:**

- ALL DRAINAGE AND ROADWAY CONSTRUCTION SHALL MEET THE STANDARDS AND SPECIFICATIONS OF THE CITY OF COLORADO SPRINGS/EL PASO COUNTY DRAINAGE CRITERIA MANUAL, VOLUMES 1 AND 2, AND THE EL PASO COUNTY ENGINEERING CRITERIA MANUAL.
- CONTRACTOR SHALL BE RESPONSIBLE FOR THE NOTIFICATION AND FIELD NOTIFICATION OF ALL EXISTING UTILITIES, WHETHER SHOWN ON THE PLANS OR NOT, BEFORE BEGINNING CONSTRUCTION. LOCATION OF EXISTING UTILITIES SHALL BE VERIFIED BY THE CONTRACTOR PRIOR TO CONSTRUCTION. CALL 811 TO CONTACT THE UTILITY NOTIFICATION CENTER OF COLORADO (UNCC).
- CONTRACTOR SHALL KEEP A COPY OF THESE APPROVED PLANS, THE GRADING AND EROSION CONTROL PLAN, THE STORMWATER MANAGEMENT PLAN (SWMP), THE SOILS AND GEOTECHNICAL REPORT, AND THE APPROPRIATE DESIGN AND CONSTRUCTION STANDARDS AND SPECIFICATIONS AT THE JOB SITE AT ALL TIMES, INCLUDING THE FOLLOWING:
  - EL PASO COUNTY ENGINEERING CRITERIA MANUAL (ECM)
  - CITY OF COLORADO SPRINGS/EL PASO COUNTY DRAINAGE CRITERIA MANUAL, VOLUMES 1 AND 2
  - COLORADO DEPARTMENT OF TRANSPORTATION (CDOT) STANDARD SPECIFICATIONS FOR ROAD AND BRIDGE CONSTRUCTION
  - CDOT M & S STANDARDS
- NOTWITHSTANDING ANYTHING DEPICTED IN THESE PLANS IN WORDS OR GRAPHIC REPRESENTATION, ALL DESIGN AND CONSTRUCTION RELATED TO ROADS, STORM DRAINAGE AND EROSION CONTROL SHALL CONFORM TO THE STANDARDS AND REQUIREMENTS OF THE MOST RECENT VERSION OF THE RELEVANT ADOPTED EL PASO COUNTY STANDARDS, INCLUDING THE LAND DEVELOPMENT CODE, THE ENGINEERING CRITERIA MANUAL, THE DRAINAGE CRITERIA MANUAL, AND THE DRAINAGE CRITERIA MANUAL VOLUME 2. ANY DEVIATIONS FROM REGULATIONS AND STANDARDS MUST BE REQUESTED, AND APPROVED, IN WRITING. ANY MODIFICATIONS NECESSARY TO MEET CRITERIA AFTER-THE-FACT WILL BE ENTIRELY THE DEVELOPER'S RESPONSIBILITY TO RECTIFY.
- IT IS THE DESIGN ENGINEER'S RESPONSIBILITY TO ACCURATELY SHOW EXISTING CONDITIONS, BOTH ONSITE AND OFFSITE, ON THE CONSTRUCTION PLANS. ANY MODIFICATIONS NECESSARY DUE TO CONFLICTS, OMISSIONS, OR CHANGED CONDITIONS WILL BE ENTIRELY THE DEVELOPER'S RESPONSIBILITY TO RECTIFY.
- CONTRACTOR SHALL SCHEDULE A PRE-CONSTRUCTION MEETING WITH EL PASO COUNTY PLANNING AND COMMUNITY DEVELOPMENT (PCD) - INSPECTIONS, PRIOR TO STARTING CONSTRUCTION.
- IT IS THE CONTRACTOR'S RESPONSIBILITY TO UNDERSTAND THE REQUIREMENTS OF ALL JURISDICTIONAL AGENCIES AND TO OBTAIN ALL REQUIRED PERMITS, INCLUDING BUT NOT LIMITED TO EL PASO COUNTY EROSION AND STORMWATER QUALITY CONTROL PERMIT (ESQCP), REGIONAL BUILDING FLOODPLAIN DEVELOPMENT PERMIT, U.S. ARMY CORPS OF ENGINEERS-ISSUED 401 AND/OR 404 PERMITS, AND COUNTY AND STATE FUGITIVE DUST PERMITS.
- CONTRACTOR SHALL NOT DEVIATE FROM THE PLANS WITHOUT FIRST OBTAINING WRITTEN APPROVAL FROM THE DESIGN ENGINEER AND PCD. CONTRACTOR SHALL NOTIFY THE DESIGN ENGINEER IMMEDIATELY UPON DISCOVERY OF ANY ERRORS OR INCONSISTENCIES.
- ALL STORM DRAIN PIPE SHALL BE CLASS III RCP UNLESS OTHERWISE NOTED AND APPROVED BY PCD.
- CONTRACTOR SHALL COORDINATE GEOTECHNICAL TESTING PER ECM STANDARDS. PAVEMENT DESIGN SHALL BE APPROVED BY EL PASO COUNTY PCD PRIOR TO PLACEMENT OF CURB AND GUTTER AND PAVEMENT.
- ALL CONSTRUCTION TRAFFIC MUST ENTER/EXIT THE SITE AT APPROVED CONSTRUCTION ACCESS POINTS.
- SIGHT VISIBILITY TRIANGLES AS IDENTIFIED IN THE PLANS SHALL BE PROVIDED AT ALL INTERSECTIONS. OBSTRUCTIONS GREATER THAN 18 INCHES ABOVE FLOWLINE ARE NOT ALLOWED WITHIN SIGHT TRIANGLES.
- SIGNING AND STRIPING SHALL COMPLY WITH EL PASO COUNTY DOT AND MUTCD CRITERIA. [IF APPLICABLE, ADDITIONAL SIGNING AND STRIPING NOTES WILL BE PROVIDED.]
- CONTRACTOR SHALL OBTAIN ANY PERMITS REQUIRED BY EL PASO COUNTY DOT, INCLUDING WORK WITHIN THE RIGHT-OF-WAY AND SPECIAL TRANSPORT PERMITS.
- THE LIMITS OF CONSTRUCTION SHALL REMAIN WITHIN THE PROPERTY LINE UNLESS OTHERWISE NOTED. THE OWNER/DEVELOPER SHALL OBTAIN WRITTEN PERMISSION AND EASEMENTS, WHERE REQUIRED, FROM ADJOINING PROPERTY OWNER(S) PRIOR TO ANY OFF-SITE DISTURBANCE, GRADING, OR CONSTRUCTION.



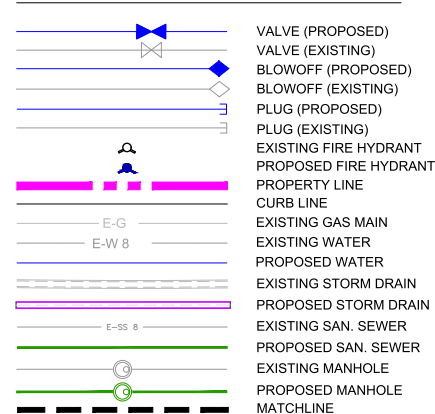
**OVERALL LAYOUT**  
SCALE: 1" = 200'

UTILITY CROSSING DETAILS				
CROSSING #	N & E	TOP OF PIPE	BTM OF PIPE	VERT. SEP.
1	N 7719.33 E 13971.45	8" PVC SEWER 5868.79	18" RCP STORM 5871.66	2.87'
2	N 7719.50 E 13999.37	8" PVC SEWER 5868.51	30" RCP STORM 5870.32	1.81'
3	N 7729.56 E 14010.51	8" PVC SEWER 5868.48	8" PVC WATER 5875.04	6.56'
4	N 7955.64 E 14009.11	8" PVC SEWER 5870.25	24" RCP STORM 5880.25	10.00'
5	N 7966.50 E 13968.99	8" PVC SEWER 5871.04	24" RCP STORM 5881.02	9.98'
6	N 7966.69 E 13998.38	8" PVC SEWER 5870.75	30" RCP STORM 5881.03	10.28'
7	N 7976.74 E 14008.98	8" PVC SEWER 5870.69	8" PVC WATER 5885.18	14.49'
8	N 8225.22 E 14007.48	8" PVC SEWER 5872.23	8" PVC WATER 5891.28	19.05'
9	N 8214.67 E 13916.16	8" PVC SEWER 5873.93	24" RCP STORM 5891.37	17.44'
10	N 8210.47 E 13608.46	8" PVC SEWER 5884.38	30" RCP STORM 5893.69	9.31'
11	N 8223.77 E 13767.48	8" PVC SEWER 5877.12	8" PVC WATER 5891.88	14.76'
12	N 8204.91 E 13546.71	8" PVC SEWER 5887.65	8" PVC WATER 5894.12	6.47'
13	N 8156.91 E 13375.46	8" PVC SEWER 5889.40	8" PVC WATER 5895.90	6.50'
14	N 8330.13 E 13328.92	8" PVC SEWER 5893.97	12" PVC WATER 5900.08	6.11'
15	N 8641.09 E 13287.58	8" PVC SEWER 5898.76	8" PVC WATER 5906.56	7.80'
16	N 8704.16 E 13512.68	8" PVC SEWER 5891.60	8" PVC WATER 5898.29	6.69'
17	N 8758.78 E 13765.96	8" PVC SEWER 5880.34	8" PVC WATER 5888.74	8.40'

**ABBREVIATIONS**

ASSY	ASSEMBLY
BOP	BOTTOM OF PIPE
BOV	BLOWOFF ASSEMBLY AND VALVE
CPLG	COUPLING
(INS.)	(INSULATING)
(RED.)	(REDUCING)
(STR.)	(STRAIGHT)
CRA	CONCRETE REVERSE ANCHOR
CTRB	CONCRETE THRUST REACTION BLOCK
DEFL	DEFLECT
DIP	DUCTILE IRON PIPE
EL	ELEVATION
EX	EXISTING
FLG	FLANGE
FH	FIRE HYDRANT
GPM	GALLONS PER MINUTE
GRD BRK	V.P.I. GRADE BREAK
HYD ASSY	INCLUDES FIRE HYDRANT, LATERAL, VALVE, TIE RODS, AND REVERSE ANCHOR.
INV	INVERT
LT	LEFT OF CENTER LINE
MIN	MINIMUM
MJ	MECHANICAL JOINT
N.S.E.W	NORTH,SOUTH,EAST, WEST
PL	PROPERTY LINE
PSI	POUNDS PER SQUARE INCH
PVC	POLYVINYL CHLORIDE PIPE
RCP	REINFORCED CONCRETE PIPE
RED	REDUCER
RSNTS	MJ RESTRAINT (i.e. MEGALUG)
RT	RIGHT OF CENTER LINE
SJ	SLIP JOINT
SS	SANITARY SEWER
STA	STATION
STS	STORM SEWER
TOP	TOP OF PIPE
TYP	TYPICAL
WL	WATER LINE

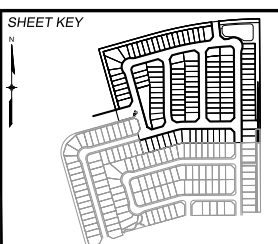
**LEGEND**



REFERENCE DRAWINGS	DATE	DESCRIPTION	CV	BY
1	10/14/2022	SHORTENED WATER SERVICES TO PROPERTY LINE		

**COMPUTER FILE MANAGEMENT**

FILE NAME: S:\21.886.038 (Trails F6)\100 Dwg\104 Plan Sets\Construction Plans\Utility Plans\Sanitary Plan\GN01.dwg  
 CTB FILE: Matrix(black).ctb  
 PLOT DATE: July 28, 2025 9:09:28 AM  
 THIS DRAWING IS CURRENT AS OF PLOT DATE AND MAY BE SUBJECT TO CHANGE.



**BENCHMARK**  
 COLORADO SPRINGS UTILITIES (FIMS) MONUMENT F206  
 A BERNTSEN TOP SECURITY MONUMENT SYSTEM WITH A 3.5-INCH DIAMETER ALUMINUM CAP IN A ROAD BOX, LOCATED ON THE NORTHWEST CORNER OF FONTAINE BOULEVARD AND POWERS BOULEVARD.  
 ELEVATION - 5897.89' U.S. SURVEY FT

**BASIS OF BEARING**  
 BEARINGS ARE BASED ON THE NORTH LINE OF THE NORTHWEST QUARTER OF SECTION 9, TOWNSHIP 15 SOUTH, RANGE 65 WEST OF THE 6TH P.M. SAID LINE BEARS S89°51'23"E FROM THE NORTHWEST CORNER OF SAID SECTION 9 (2 1/2' AULM. CAP PLS 17664) TO THE N 1/4 CORNER OF SAID SECTION 9 (3 1/2' AULM. CAP PLS 10377)

PREPARED BY: **Matrix**

SEAL

FOR AND ON BEHALF OF  
**MATRIX DESIGN GROUP, INC.**  
 PROJECT No. 21.886.038

THE WIDEFIELD WATER AND SANITATION DISTRICT RECOGNIZES THE DESIGN ENGINEER AS HAVING RESPONSIBILITY FOR THE DESIGN AND HAS LIMITED ITS SCOPE OF REVIEW ACCORDINGLY.

**WIDEFIELD WATER AND SANITATION DISTRICT WATER DESIGN APPROVAL**

DATE: \_\_\_\_\_ BY: \_\_\_\_\_

PROJECT NUMBER: \_\_\_\_\_

IN CASE OF ERRORS OR OMISSIONS WITH THE WATER DESIGN AS SHOWN ON THIS DOCUMENT THE STANDARDS AS DEFINED IN THE "RULES AND REGULATIONS FOR INSTALLATION OF WATER MAINS AND SERVICES" SHALL RULE.

**APPROVAL EXPIRES 180 DAYS FROM DESIGN APPROVAL**

**TRAILS AT ASPEN RIDGE**

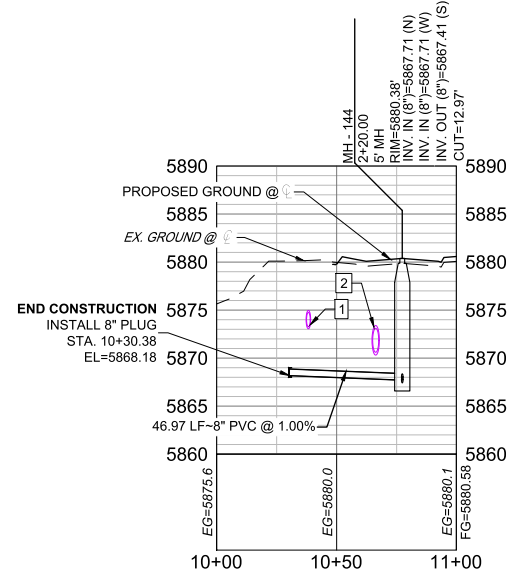
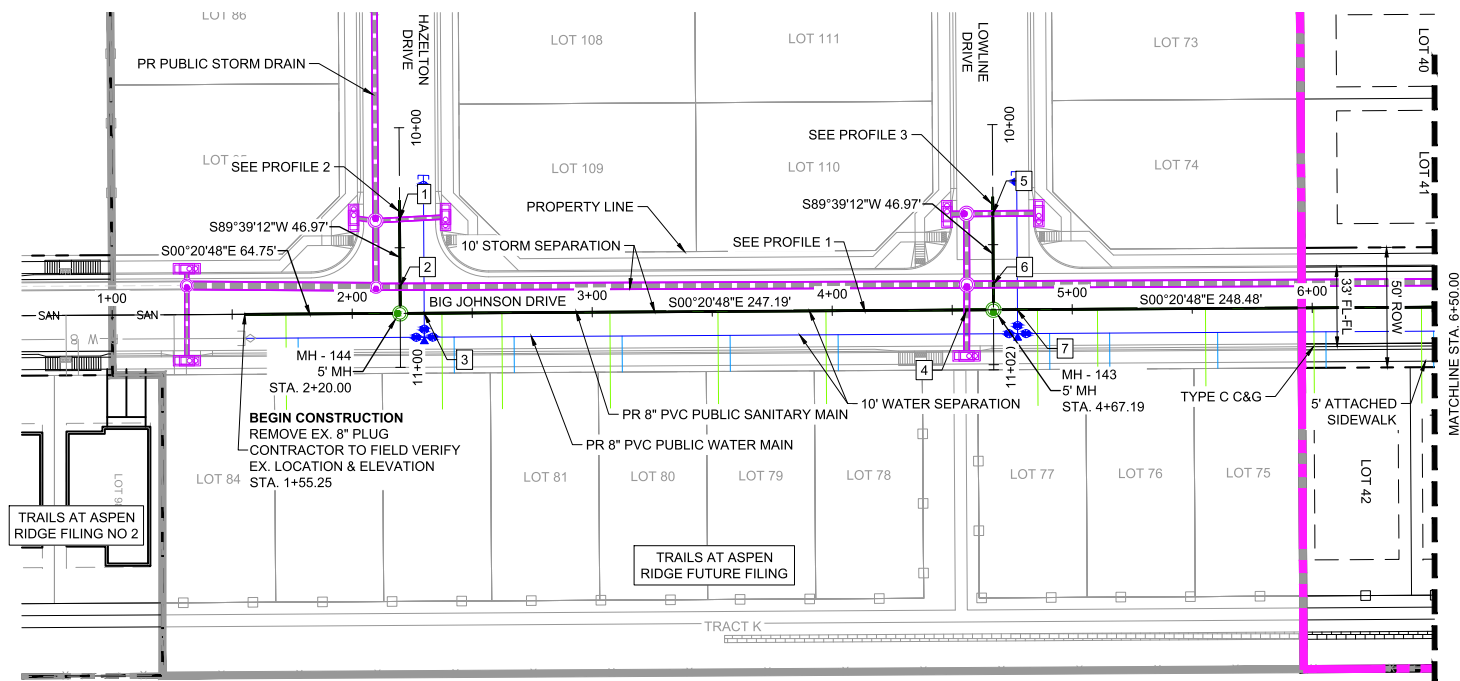
FILING NO. 4  
 8" SANITARY SEWER PLANS

**GENERAL NOTES, LEGEND & ABBREVIATIONS**

DESIGNED BY: BAS	SCALE: JULY, 2025	DRAWING No. GN01
DRAWN BY: JLW	HORIZ N/A	
CHECKED BY: NMS	VERT. N/A	
	DATE ISSUED: JULY, 2025	
	SHEET 2 OF 12	

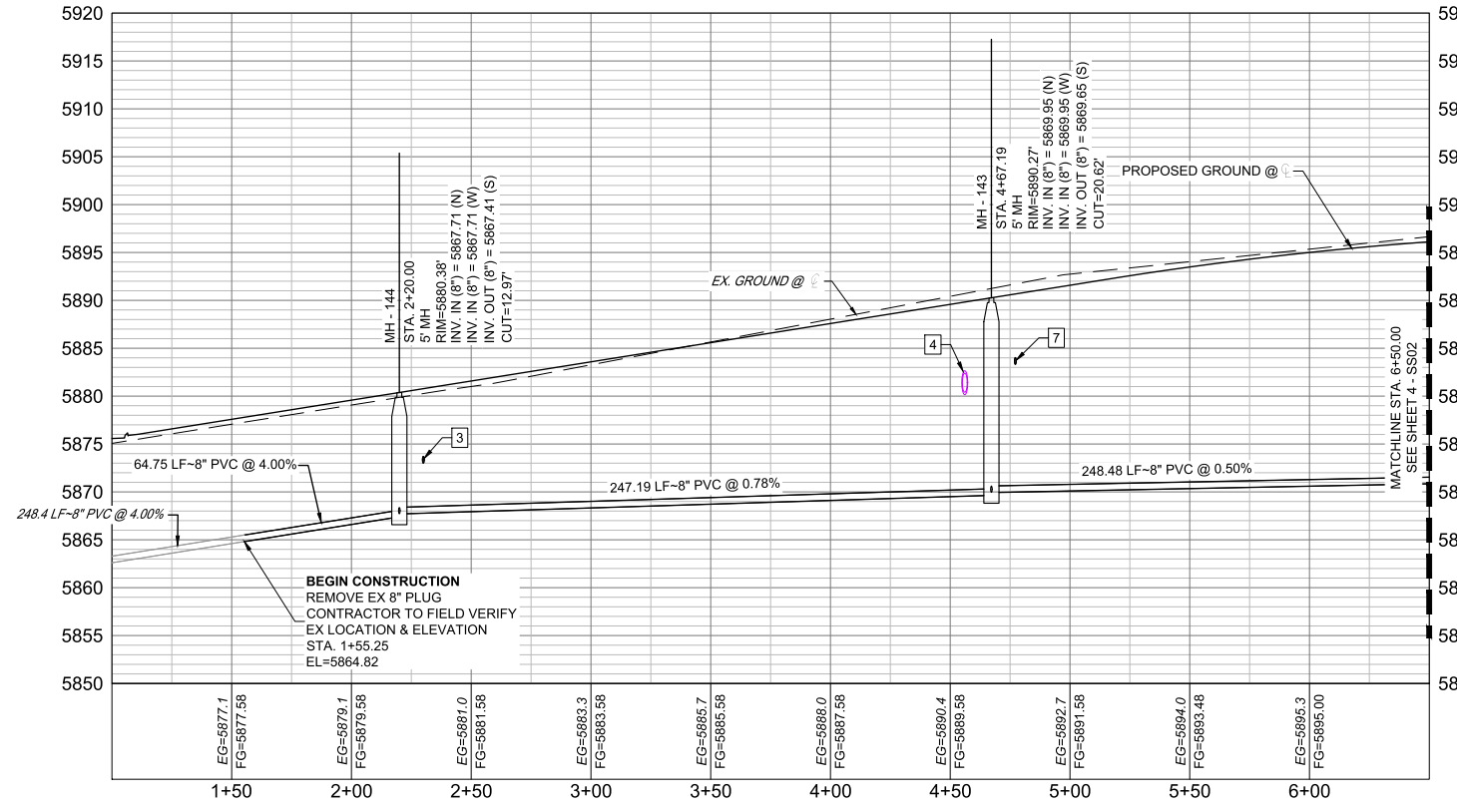


Know what's below.  
Call before you dig.

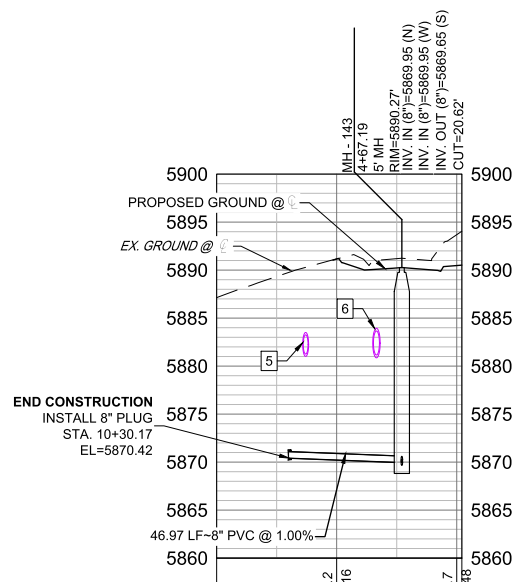


Hazelton-SAN PROFILE  
SCALE: (H) 1" = 40' (V) 1" = 10'  
START STA: 10+00.00, END STA: 10+99.84

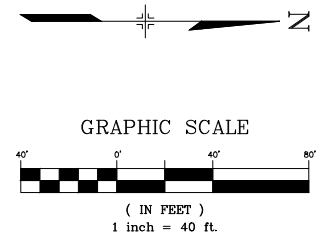
UTILITY CROSSING DETAILS				
CROSSING #	N & E	TOP OF PIPE	BTM OF PIPE	VERT. SEP.
1	N 7719.33 E 13971.45	8" PVC SEWER 5868.79	18" RCP STORM 5873.06	4.27'
2	N 7719.50 E 13999.37	8" PVC SEWER 5868.51	30" RCP STORM 5870.32	1.81'
3	N 7729.56 E 14010.51	8" PVC SEWER 5868.48	8" PVC WATER 5873.00	4.52'
4	N 7955.64 E 14009.11	8" PVC SEWER 5870.25	24" RCP STORM 5880.25	10.00'
5	N 7966.50 E 13968.99	8" PVC SEWER 5871.04	24" RCP STORM 5881.02	9.98'
6	N 7966.69 E 13998.38	8" PVC SEWER 5870.75	30" RCP STORM 5880.86	10.11'
7	N 7976.74 E 14008.98	8" PVC SEWER 5870.69	8" PVC WATER 5883.32	12.63'



BigJohnson-SAN PROFILE  
SCALE: (H) 1" = 40' (V) 1" = 10'  
START STA: 1+00.00, END STA: 6+50.00



Lowline-SAN PROFILE  
SCALE: (H) 1" = 40' (V) 1" = 10'  
START STA: 10+00.00, END STA: 11+02.13



THE LOCATIONS OF EXISTING ABOVE GROUND AND UNDERGROUND UTILITIES ARE SHOWN IN AN APPROXIMATE WAY ONLY. THE CONTRACTOR SHALL DETERMINE THE EXACT LOCATION OF ALL EXISTING UTILITIES BEFORE COMMENCING WORK. THE CONTRACTOR SHALL BE FULLY RESPONSIBLE FOR ANY AND ALL DAMAGES WHICH MIGHT BE CAUSED BY HIS FAILURE TO EXACTLY LOCATE AND PRESERVE ANY AND ALL ABOVE GROUND AND UNDERGROUND UTILITIES.

THE WIDEFIELD WATER AND SANITATION DISTRICT RECOGNIZES THE DESIGN ENGINEER AS HAVING RESPONSIBILITY FOR THE DESIGN AND HAS LIMITED ITS SCOPE OF REVIEW ACCORDINGLY.

**WIDEFIELD WATER AND SANITATION DISTRICT  
WASTEWATER DESIGN APPROVAL**

DATE: \_\_\_\_\_ BY: \_\_\_\_\_

PROJECT NUMBER: \_\_\_\_\_

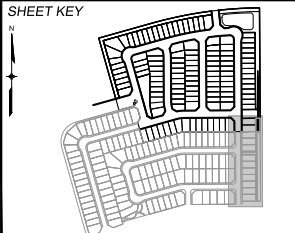
IN CASE OF ERRORS OR OMISSIONS WITH THE WATER DESIGN AS SHOWN ON THIS DOCUMENT THE STANDARDS AS DEFINED IN THE "RULES AND REGULATIONS FOR INSTALLATION OF WASTEWATER MAINS AND SERVICES" SHALL RULE.

APPROVAL EXPIRES 180 DAYS FROM DESIGN APPROVAL

REFERENCE DRAWINGS	DESCRIPTION	DATE	BY
1	SHORTENED WATER SERVICES TO PROPERTY LINE	10/14/2022	CV

COMPUTER FILE MANAGEMENT	
FILE NAME:	S:\21.886.038 (Trails F6)\100 Dwg\104 Plan Sets\Construction Plans\Utility Plans\Sanitary Plan\SS01.dwg
CTB FILE:	Matrix(black).ctb
PLOT DATE:	July 28, 2025 9:09:46 AM



**BENCHMARK**  
COLORADO SPRINGS UTILITIES (FIMS) MONUMENT F206  
A BERTSEN TOP SECURITY MONUMENT SYSTEM WITH A 3.5-INCH DIAMETER ALUMINUM CAP IN A ROAD BOX, LOCATED ON THE NORTHWEST CORNER OF FONTAINE BOULEVARD AND POWERS BOULEVARD.  
ELEVATION - 5897.89' U.S. SURVEY FT

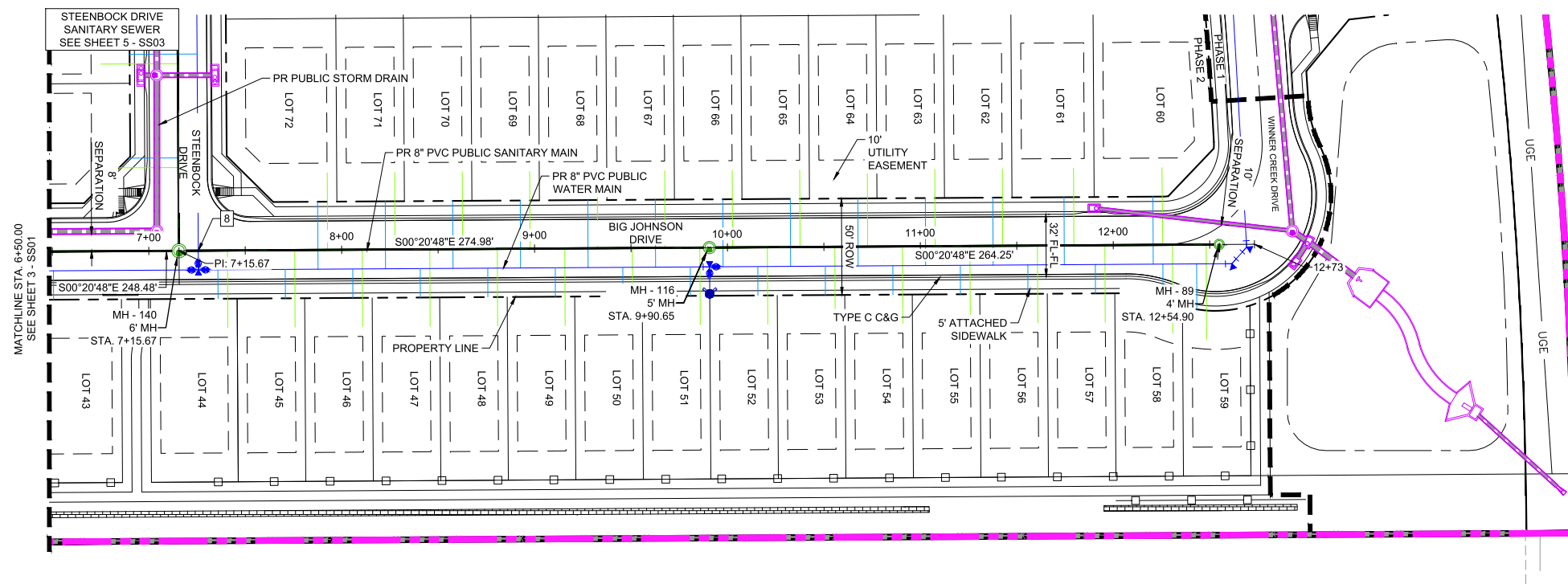
**BASIS OF BEARING**  
BEARINGS ARE BASED ON THE NORTH LINE OF THE NORTHWEST QUARTER OF SECTION 9, TOWNSHIP 15 SOUTH, RANGE 65 WEST OF THE 6TH P.M. SAID LINE BEARS S89°51'23"E FROM THE NORTHWEST CORNER OF SAID SECTION 9 (2 1/2' AULM. CAP PLS 17664) TO THE N 1/4 CORNER OF SAID SECTION 9 (3 1/2' AULM. CAP PLS 10377)



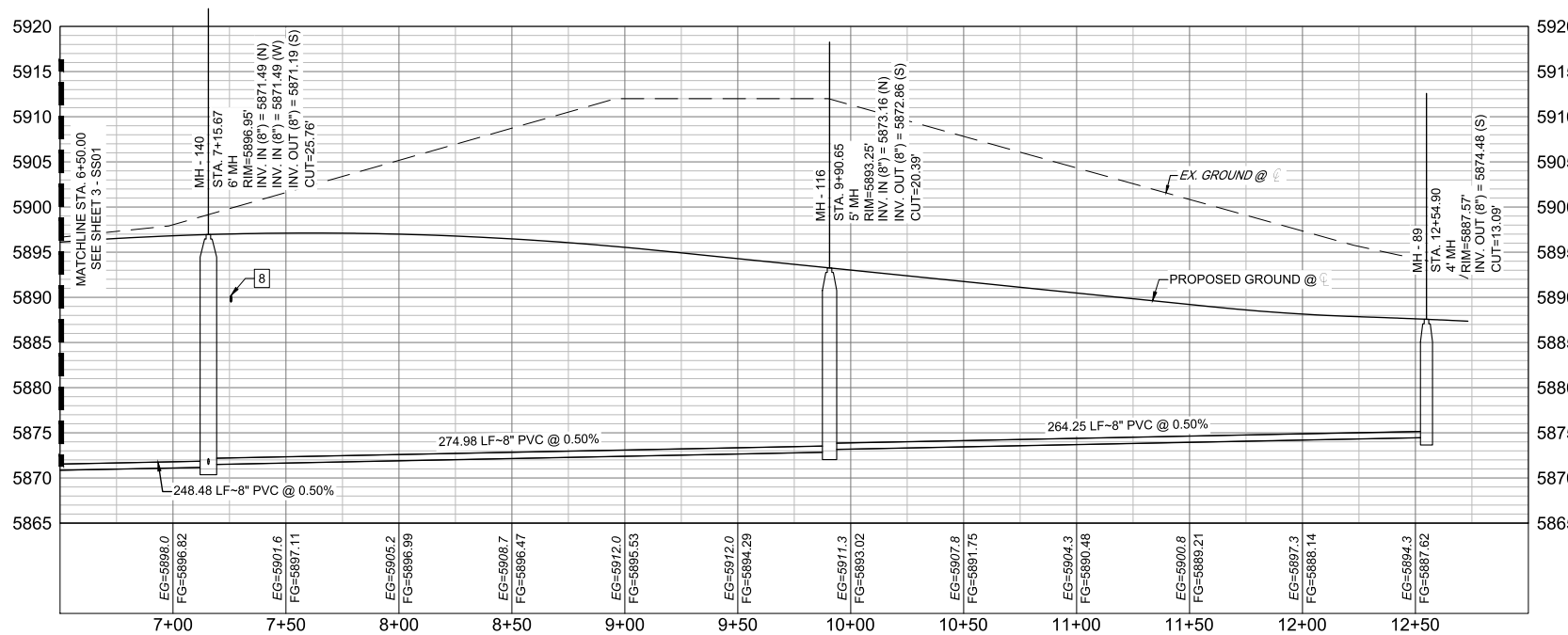
<b>TRAILS AT ASPEN RIDGE</b>			
FILING NO. 4 8" SANITARY SEWER PLANS			
<b>WASTEWATER PLAN &amp; PROFILE</b>			
DESIGNED BY:	BAS	SCALE:	DATE ISSUED:
DRAWN BY:	JLW	HORIZ. 1" = 40'	JULY, 2025
CHECKED BY:	NMS	VERT. 1" = 10'	SHEET 3 OF 12
			DRAWING No. SS01



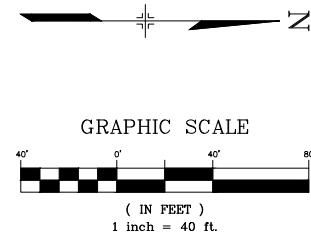
Know what's below.  
Call before you dig.



UTILITY CROSSING DETAILS				
CROSSING #	N & E	TOP OF PIPE	BTM OF PIPE	VERT. SEP.
8	N 8225.22 E 14007.48	8" PVC SEWER 5872.23	8" PVC WATER 5889.66	17.43'



Big Johnson-SAN PROFILE  
SCALE: (H) 1" = 40' (V) 1" = 10'  
START STA: 6+50.00, END STA: 13+00.00



THE LOCATIONS OF EXISTING ABOVE GROUND AND UNDERGROUND UTILITIES ARE SHOWN IN AN APPROXIMATE WAY ONLY. THE CONTRACTOR SHALL DETERMINE THE EXACT LOCATION OF ALL EXISTING UTILITIES BEFORE COMMENCING WORK. THE CONTRACTOR SHALL BE FULLY RESPONSIBLE FOR ANY AND ALL DAMAGES WHICH MIGHT BE CAUSED BY HIS FAILURE TO EXACTLY LOCATE AND PRESERVE ANY AND ALL ABOVE GROUND AND UNDERGROUND UTILITIES.

THE WIDEFIELD WATER AND SANITATION DISTRICT RECOGNIZES THE DESIGN ENGINEER AS HAVING RESPONSIBILITY FOR THE DESIGN AND HAS LIMITED ITS SCOPE OF REVIEW ACCORDINGLY.

**WIDEFIELD WATER AND SANITATION DISTRICT  
WASTEWATER DESIGN APPROVAL**

DATE: \_\_\_\_\_ BY: \_\_\_\_\_

PROJECT NUMBER: \_\_\_\_\_

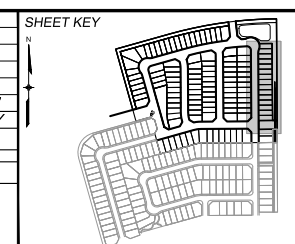
IN CASE OF ERRORS OR OMISSIONS WITH THE WATER DESIGN AS SHOWN ON THIS DOCUMENT THE STANDARDS AS DEFINED IN THE "RULES AND REGULATIONS FOR INSTALLATION OF WASTEWATER MAINS AND SERVICES" SHALL RULE.

APPROVAL EXPIRES 180 DAYS FROM DESIGN APPROVAL

REFERENCE DRAWINGS	NO.	DATE	DESCRIPTION	CV BY
	1	10/14/2022	SHORTENED WATER SERVICES TO PROPERTY LINE	

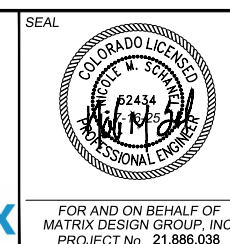
  

COMPUTER FILE MANAGEMENT	
FILE NAME:	S:\21.886.038 (Trails F6)\100 Dwg\104 Plan Sets\Construction Plans\Utility Plans\Sanitary Plan\SS01.dwg
CTB FILE:	Matrix(black).ctb
PLOT DATE:	July 28, 2025 9:09:59 AM
THIS DRAWING IS CURRENT AS OF PLOT DATE AND MAY BE SUBJECT TO CHANGE.	



**BENCHMARK**  
COLORADO SPRINGS UTILITIES (FIMS) MONUMENT F206  
A BERNTSEN TOP SECURITY MONUMENT SYSTEM WITH A 3.5-INCH DIAMETER ALUMINUM CAP IN A ROAD BOX, LOCATED ON THE NORTHWEST CORNER OF FONTAINE BOULEVARD AND POWERS BOULEVARD.  
ELEVATION - 5897.89' U.S. SURVEY FT

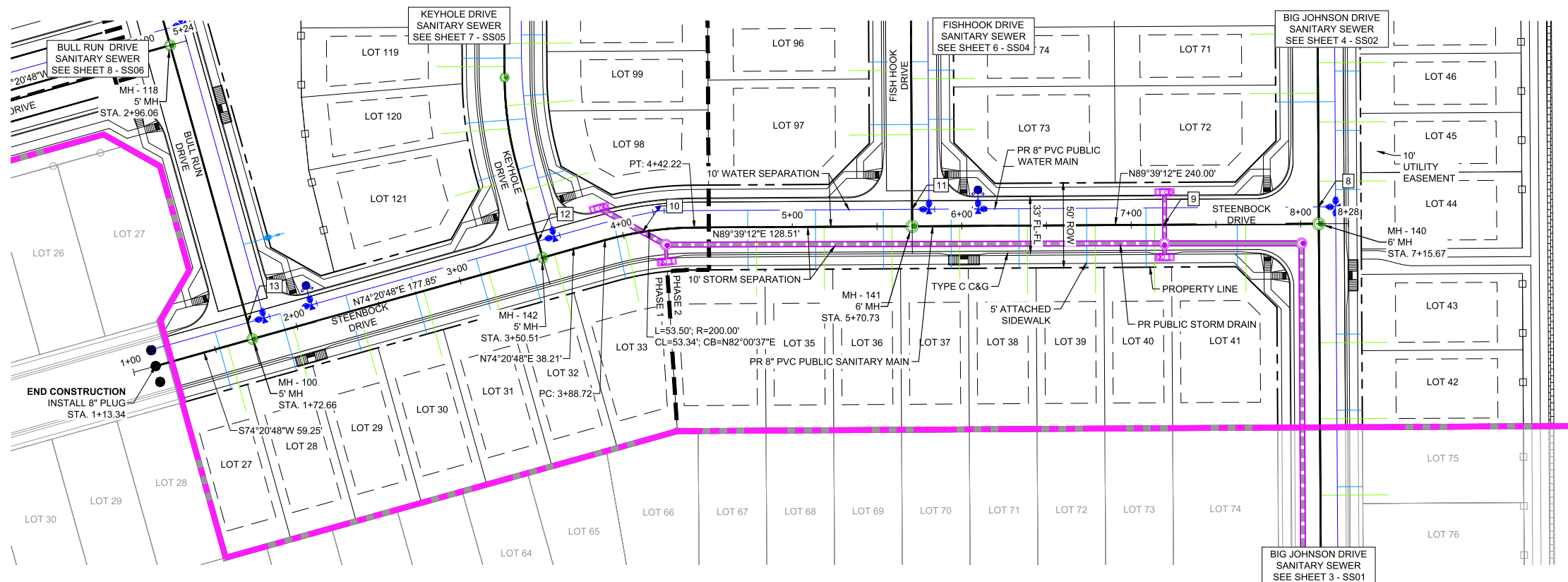
**BASIS OF BEARING**  
BEARINGS ARE BASED ON THE NORTH LINE OF THE NORTHWEST QUARTER OF SECTION 9, TOWNSHIP 15 SOUTH, RANGE 65 WEST OF THE 6TH P.M. SAID LINE BEARS S89°51'23"E FROM THE NORTHWEST CORNER OF SAID SECTION 9 (2 1/2' AULM. CAP PLS 17664) TO THE N 1/4 CORNER OF SAID SECTION 9 (3 1/2' AULM. CAP PLS 10377)



<b>TRAILS AT ASPEN RIDGE</b>			
FILING NO. 4 8" SANITARY SEWER PLANS			
<b>WASTEWATER PLAN &amp; PROFILE</b>			
DESIGNED BY:	BAS	SCALE	DATE ISSUED:
DRAWN BY:	JLW	HORIZ 1" = 40'	JULY, 2025
CHECKED BY:	NMS	VERT. 1" = 10'	SHEET 4 OF 12
			DRAWING No. <b>SS02</b>

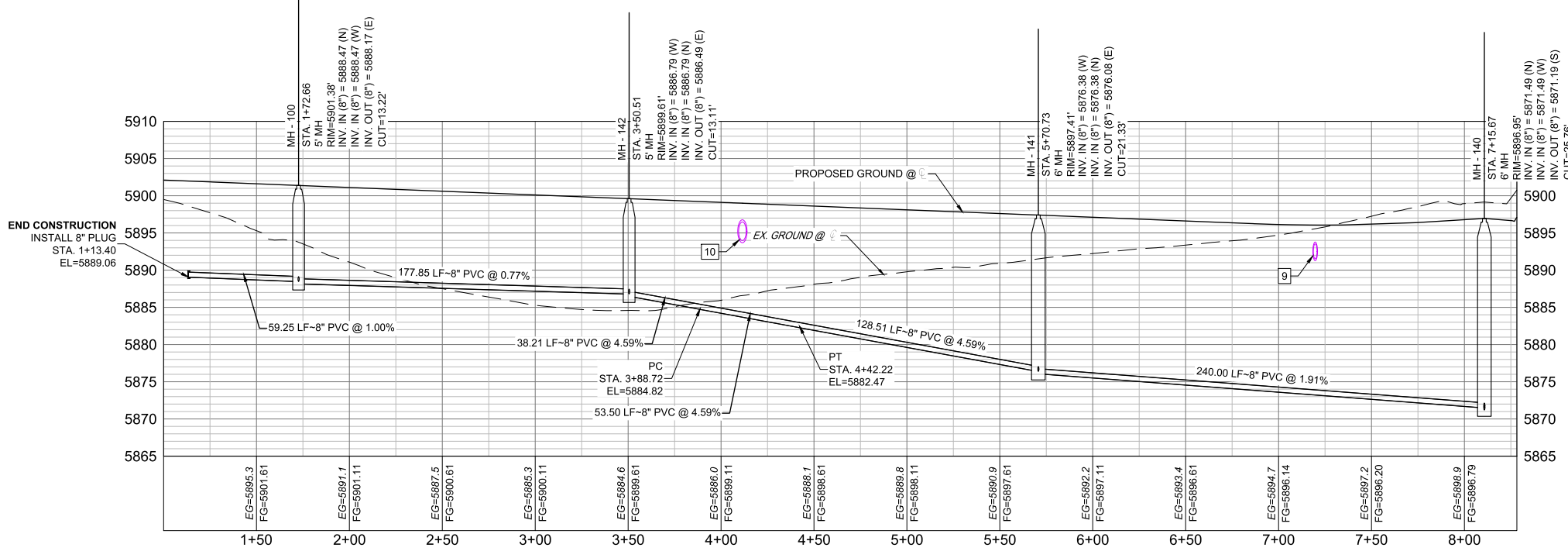
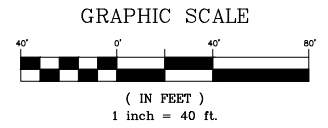


Know what's below.  
Call before you dig.



UTILITY CROSSING DETAILS				
CROSSING #	N & E	TOP OF PIPE	BTM OF PIPE	VERT. SEP.
9	N 8214.67 E 13916.16	8" PVC SEWER 5873.93	24" RCP STORM 5891.37	17.44'
10	N 8210.47 E 13608.46	8" PVC SEWER 5884.38	30" RCP STORM 5893.69	9.31'

NOTE:  
CURVILINEAR PIPE TO BE ACHIEVED USING  
3" BEND AT EVERY OTHER JOINT.



STEENBOCK-SAN PROFILE  
SCALE: (H) 1" = 40' (V) 1" = 10'  
START STA: 1+00.00, END STA: 8+28.23

THE LOCATIONS OF EXISTING ABOVE GROUND AND UNDERGROUND UTILITIES ARE SHOWN IN AN APPROXIMATE WAY ONLY. THE CONTRACTOR SHALL DETERMINE THE EXACT LOCATION OF ALL EXISTING UTILITIES BEFORE COMMENCING WORK. THE CONTRACTOR SHALL BE FULLY RESPONSIBLE FOR ANY AND ALL DAMAGES WHICH MIGHT BE CAUSED BY HIS FAILURE TO EXACTLY LOCATE AND PRESERVE ANY AND ALL ABOVE GROUND AND UNDERGROUND UTILITIES.

THE WIDEFIELD WATER AND SANITATION DISTRICT RECOGNIZES THE DESIGN ENGINEER AS HAVING RESPONSIBILITY FOR THE DESIGN AND HAS LIMITED ITS SCOPE OF REVIEW ACCORDINGLY.

**WIDEFIELD WATER AND SANITATION DISTRICT  
WASTEWATER DESIGN APPROVAL**

DATE: \_\_\_\_\_ BY: \_\_\_\_\_

PROJECT NUMBER: \_\_\_\_\_

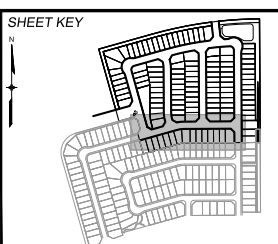
IN CASE OF ERRORS OR OMISSIONS WITH THE WATER DESIGN AS SHOWN ON THIS DOCUMENT THE STANDARDS AS DEFINED IN THE "RULES AND REGULATIONS FOR INSTALLATION OF WASTEWATER MAINS AND SERVICES" SHALL RULE.

APPROVAL EXPIRES 180 DAYS FROM DESIGN APPROVAL

REFERENCE DRAWINGS	DATE	DESCRIPTION	CV	BY
1	10/14/2022	SHORTENED WATER SERVICES TO PROPERTY LINE		

COMPUTER FILE MANAGEMENT	
FILE NAME:	S:\21.886.038 (Trails F6)\100 Dwg\104 Plan Sets\Construction Plans\Utility Plans\Sanitary Plan\SS01.dwg
CTB FILE:	Matrix(black).ctb
PLOT DATE:	July 28, 2025 9:10:14 AM
THIS DRAWING IS CURRENT AS OF PLOT DATE AND MAY BE SUBJECT TO CHANGE.	



**BENCHMARK**  
COLORADO SPRINGS UTILITIES (FIMS) MONUMENT F206  
A BERNTSEN TOP SECURITY MONUMENT SYSTEM WITH A 3.5-INCH DIAMETER ALUMINUM CAP IN A ROAD BOX, LOCATED ON THE NORTHWEST CORNER OF FONTAINE BOULEVARD AND POWERS BOULEVARD.  
ELEVATION - 5897.89' U.S. SURVEY FT

**BASIS OF BEARING**  
BEARINGS ARE BASED ON THE NORTH LINE OF THE NORTHWEST QUARTER OF SECTION 9, TOWNSHIP 15 SOUTH, RANGE 65 WEST OF THE 6TH P.M. SAID LINE BEARS S89°51'23"E FROM THE NORTHWEST CORNER OF SAID SECTION 9 (2 1/2' AULM. CAP PLS 17664) TO THE N 1/4 CORNER OF SAID SECTION 9 (3 1/2' AULM. CAP PLS 10377)



**TRAILS AT ASPEN RIDGE**

FILING NO. 4  
8" SANITARY SEWER PLANS

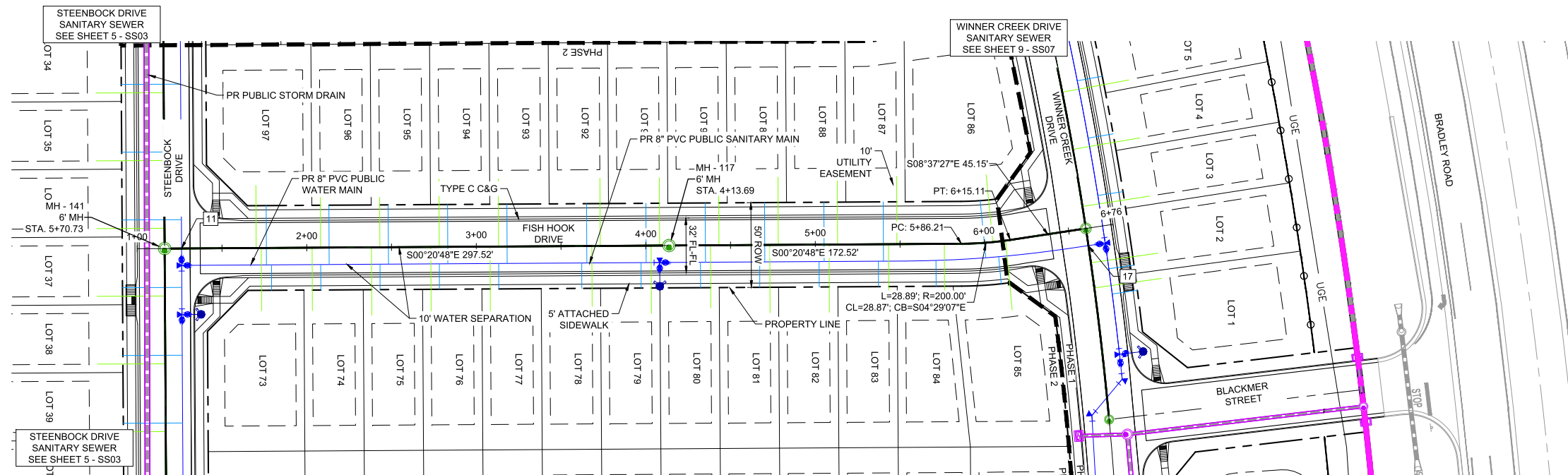
**WASTEWATER PLAN & PROFILE**

DESIGNED BY:	BAS	SCALE:	DATE ISSUED:	JULY, 2025	DRAWING No.:
DRAWN BY:	JLW	HORIZ:	1" = 40'	SHEET	5 OF 12
CHECKED BY:	NMS	VERT:	1" = 10'		SS03

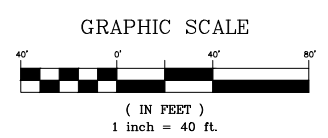
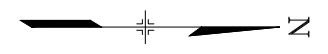
FOR AND ON BEHALF OF  
MATRIX DESIGN GROUP, INC.  
PROJECT No. 21.886.038



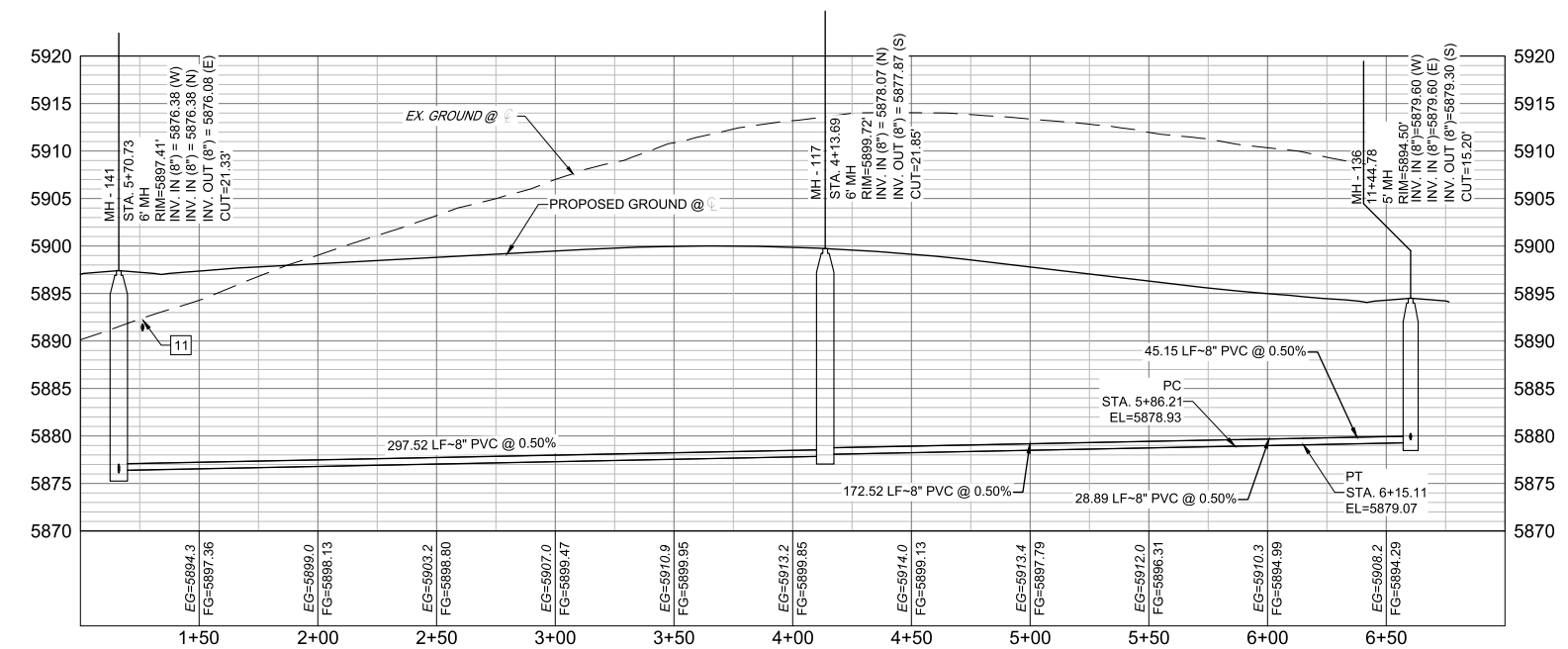
Know what's below.  
Call before you dig.



UTILITY CROSSING DETAILS				
CROSSING #	N & E	TOP OF PIPE	BTM OF PIPE	VERT. SEP.
11	N 8223.77 E 13767.48	8" PVC SEWER 5877.12	8" PVC WATER 5891.49	14.37'



NOTE:  
CURVILINEAR PIPE TO BE ACHIEVED USING  
3" BEND AT EVERY OTHER JOINT.



Fishhook-SAN PROFILE  
SCALE: (H) 1" = 40' (V) 1" = 10'  
START STA: 1+00.00, END STA: 7+00.00

THE LOCATIONS OF EXISTING ABOVE GROUND AND UNDERGROUND UTILITIES ARE SHOWN IN AN APPROXIMATE WAY ONLY. THE CONTRACTOR SHALL DETERMINE THE EXACT LOCATION OF ALL EXISTING UTILITIES BEFORE COMMENCING WORK. THE CONTRACTOR SHALL BE FULLY RESPONSIBLE FOR ANY AND ALL DAMAGES WHICH MIGHT BE CAUSED BY HIS FAILURE TO EXACTLY LOCATE AND PRESERVE ANY AND ALL ABOVE GROUND AND UNDERGROUND UTILITIES.

THE WIDEFIELD WATER AND SANITATION DISTRICT RECOGNIZES THE DESIGN ENGINEER AS HAVING RESPONSIBILITY FOR THE DESIGN AND HAS LIMITED ITS SCOPE OF REVIEW ACCORDINGLY.

**WIDEFIELD WATER AND SANITATION DISTRICT  
WASTEWATER DESIGN APPROVAL**

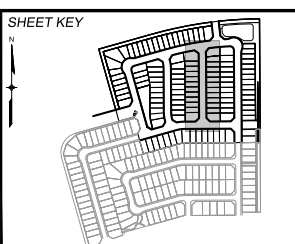
DATE: \_\_\_\_\_ BY: \_\_\_\_\_  
PROJECT NUMBER: \_\_\_\_\_

IN CASE OF ERRORS OR OMISSIONS WITH THE WATER DESIGN AS SHOWN ON THIS DOCUMENT THE STANDARDS AS DEFINED IN THE "RULES AND REGULATIONS FOR INSTALLATION OF WASTEWATER MAINS AND SERVICES" SHALL RULE.

APPROVAL EXPIRES 180 DAYS FROM DESIGN APPROVAL

NO.	DATE	DESCRIPTION	CV	BY
1	10/14/2022	SHORTENED WATER SERVICES TO PROPERTY LINE		

COMPUTER FILE MANAGEMENT  
FILE NAME: S:\21.886.038 (Trails F6)\100 Dwg\104 Plan Sets\Construction Plans\Utility Plans\Sanitary Plan\SS01.dwg  
CTB FILE: Matrix(black).ctb  
PLOT DATE: July 28, 2025 9:10:27 AM  
THIS DRAWING IS CURRENT AS OF PLOT DATE AND MAY BE SUBJECT TO CHANGE.



**BENCHMARK**  
COLORADO SPRINGS UTILITIES (FIMS) MONUMENT F206  
A BERTSEN TOP SECURITY MONUMENT SYSTEM WITH A 3.5-INCH DIAMETER ALUMINUM CAP IN A ROAD BOX, LOCATED ON THE NORTHWEST CORNER OF FONTAINE BOULEVARD AND POWERS BOULEVARD.  
ELEVATION - 5897.89' U.S. SURVEY FT

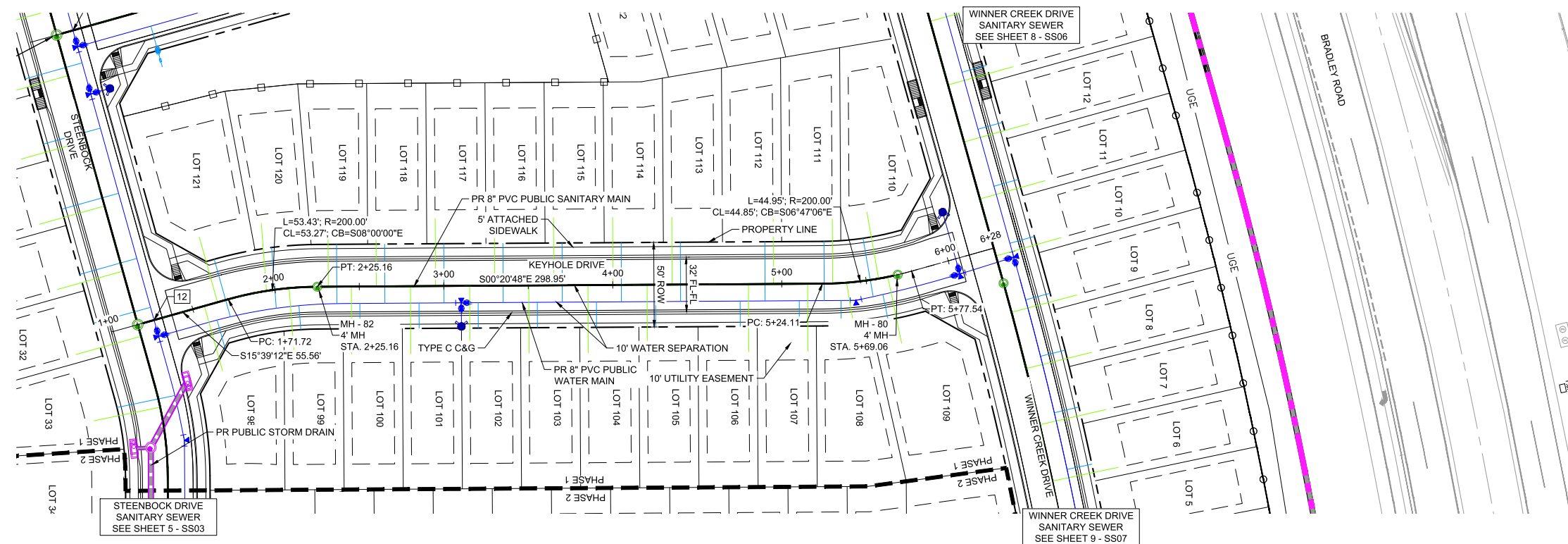
**BASIS OF BEARING**  
BEARINGS ARE BASED ON THE NORTH LINE OF THE NORTHWEST QUARTER OF SECTION 9, TOWNSHIP 15 SOUTH, RANGE 65 WEST OF THE 6TH P.M. SAID LINE BEARS S89°15'12"E FROM THE NORTHWEST CORNER OF SAID SECTION 9 (2 1/2" AULM. CAP PLS 17664) TO THE N 1/4 CORNER OF SAID SECTION 9 (3 1/2" AULM. CAP PLS 10377)



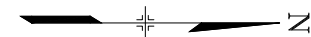
<b>TRAILS AT ASPEN RIDGE</b>			
FILING NO. 4 8" SANITARY SEWER PLANS			
<b>WASTEWATER PLAN &amp; PROFILE</b>			
DESIGNED BY: BAS	SCALE: 1" = 40'	DATE ISSUED: JULY, 2025	DRAWING No.
DRAWN BY: JLW	HORIZ: 1" = 40'	SHEET 6 OF 12	SS04
CHECKED BY: NMS	VERT: 1" = 10'		



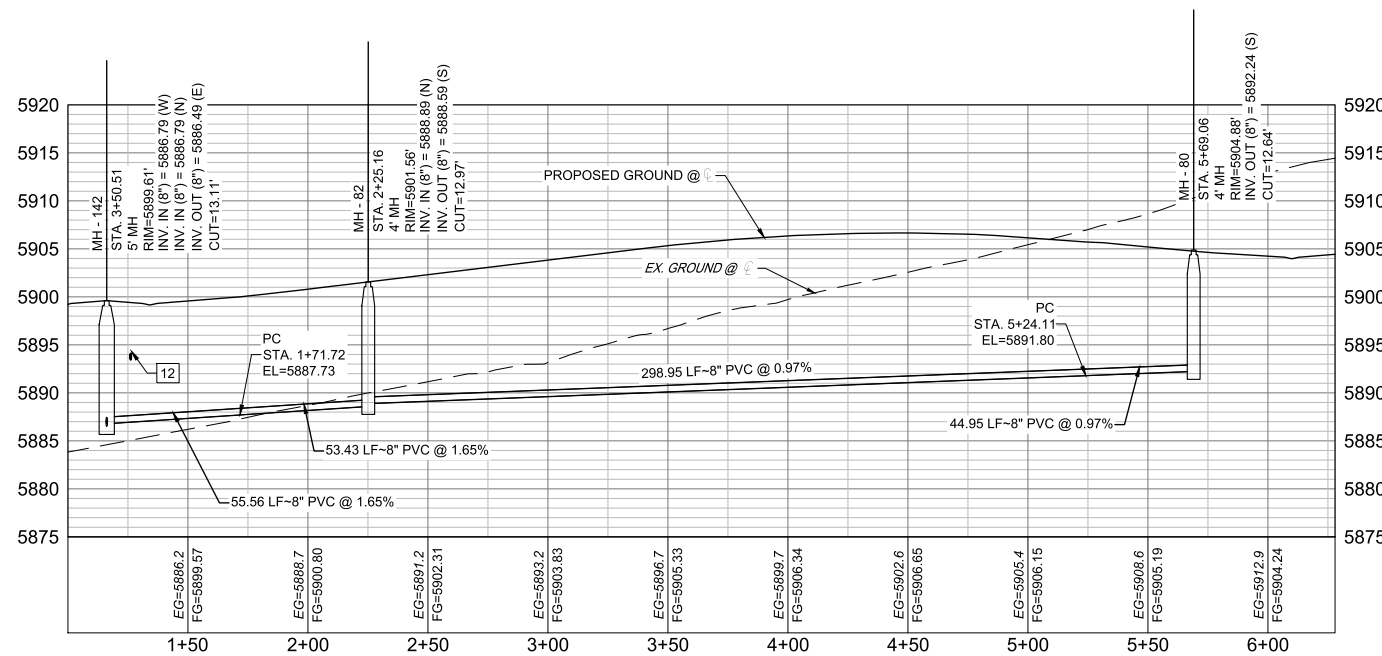
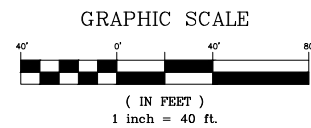
Know what's below.  
Call before you dig.



UTILITY CROSSING DETAILS				
CROSSING #	N & E	TOP OF PIPE	BTM OF PIPE	VERT. SEP.
12	N 8204.91 E 13546.71	8" PVC SEWER 5887.65	8" PVC WATER 5894.12	6.47'



NOTE:  
CURVILINEAR PIPE TO BE ACHIEVED USING  
3" BEND AT EVERY OTHER JOINT.



Keyhole-SAN PROFILE  
SCALE: (H) 1" = 40' (V) 1" = 10'  
START STA: 1+00.00, END STA: 6+27.97

THE LOCATIONS OF EXISTING ABOVE GROUND AND UNDERGROUND UTILITIES ARE SHOWN IN AN APPROXIMATE WAY ONLY. THE CONTRACTOR SHALL DETERMINE THE EXACT LOCATION OF ALL EXISTING UTILITIES BEFORE COMMENCING WORK. THE CONTRACTOR SHALL BE FULLY RESPONSIBLE FOR ANY AND ALL DAMAGES WHICH MIGHT BE CAUSED BY HIS FAILURE TO EXACTLY LOCATE AND PRESERVE ANY AND ALL ABOVE GROUND AND UNDERGROUND UTILITIES.

THE WIDEFIELD WATER AND SANITATION DISTRICT RECOGNIZES THE DESIGN ENGINEER AS HAVING RESPONSIBILITY FOR THE DESIGN AND HAS LIMITED ITS SCOPE OF REVIEW ACCORDINGLY.

**WIDEFIELD WATER AND SANITATION DISTRICT  
WASTEWATER DESIGN APPROVAL**

DATE: \_\_\_\_\_ BY: \_\_\_\_\_

PROJECT NUMBER: \_\_\_\_\_

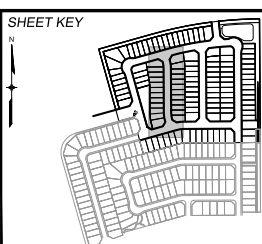
IN CASE OF ERRORS OR OMISSIONS WITH THE WATER DESIGN AS SHOWN ON THIS DOCUMENT THE STANDARDS AS DEFINED IN THE "RULES AND REGULATIONS FOR INSTALLATION OF WASTEWATER MAINS AND SERVICES" SHALL RULE.

APPROVAL EXPIRES 180 DAYS FROM DESIGN APPROVAL

REFERENCE DRAWINGS	DATE	DESCRIPTION	CV	BY
1	10/14/2022	SHORTENED WATER SERVICES TO PROPERTY LINE		

COMPUTER FILE MANAGEMENT	
FILE NAME:	S:\21.886.038 (Trails F6)\100 Dwg\104 Plan Sets\Construction Plans\Utility Plans\Sanitary Plan\SS01.dwg
CTB FILE:	Matrix(black).ctb
PLOT DATE:	July 28, 2025 9:10:40 AM
THIS DRAWING IS CURRENT AS OF PLOT DATE AND MAY BE SUBJECT TO CHANGE.	



**BENCHMARK**  
COLORADO SPRINGS UTILITIES (FIMS) MONUMENT F206  
A BERNTSEN TOP SECURITY MONUMENT SYSTEM WITH A 3.5-INCH DIAMETER ALUMINUM CAP IN A ROAD BOX, LOCATED ON THE NORTHWEST CORNER OF FONTAINE BOULEVARD AND POWERS BOULEVARD.  
ELEVATION - 5897.89' U.S. SURVEY FT

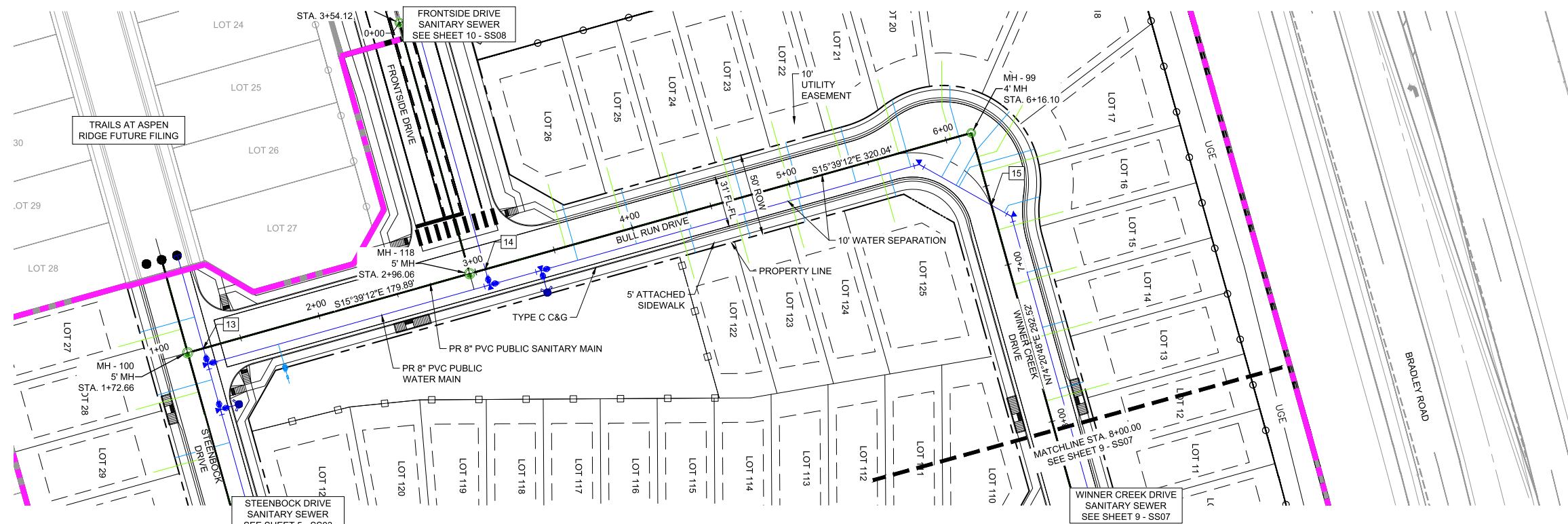
**BASIS OF BEARING**  
BEARINGS ARE BASED ON THE NORTH LINE OF THE NORTHWEST QUARTER OF SECTION 9, TOWNSHIP 15 SOUTH, RANGE 65 WEST OF THE 6TH P.M. SAID LINE BEARS S89°51'23"E FROM THE NORTHWEST CORNER OF SAID SECTION 9 (2 1/2' AULM. CAP PLS 17664) TO THE N 1/4 CORNER OF SAID SECTION 9 (3 1/2' AULM. CAP PLS 10377)



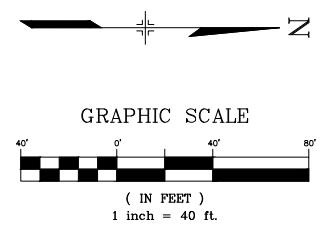
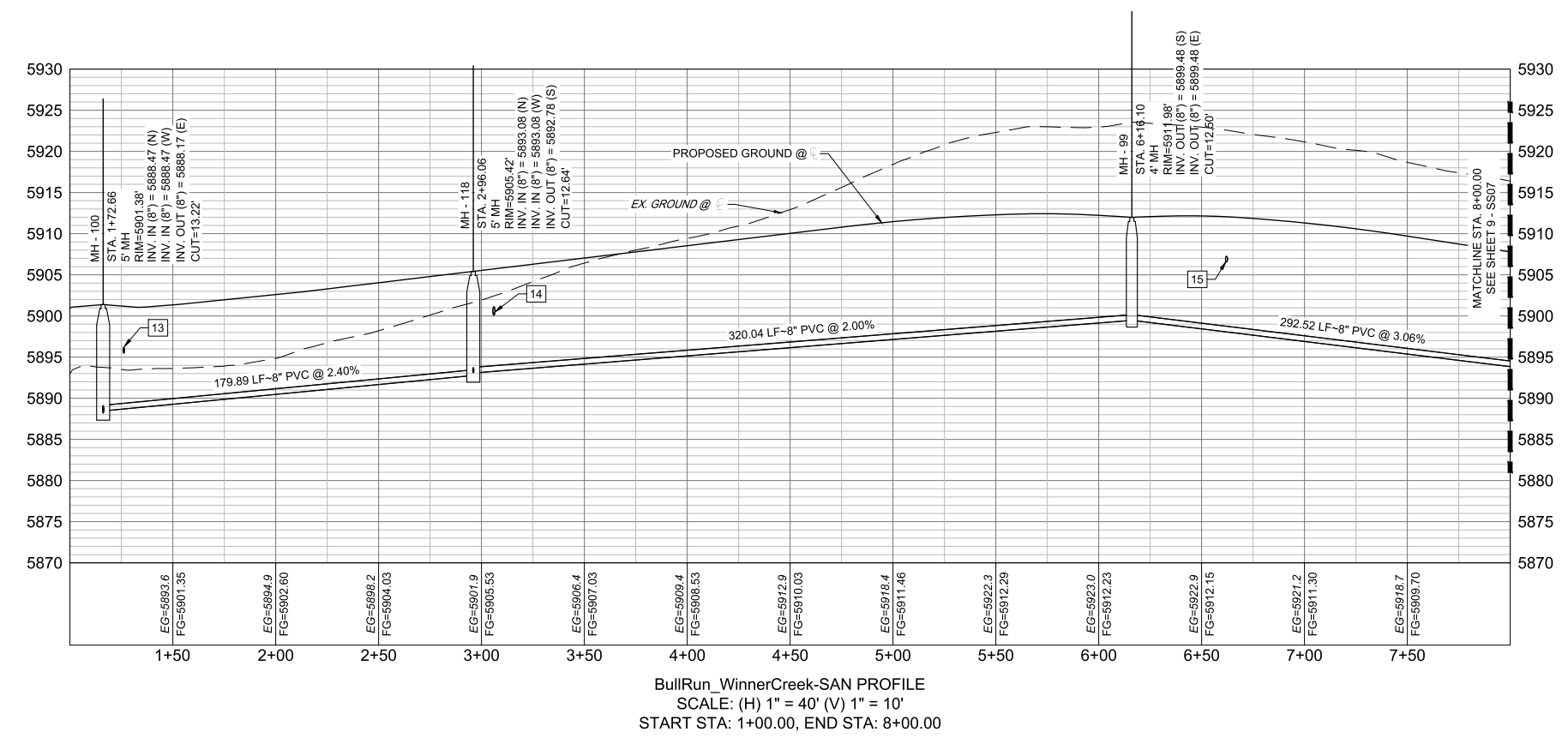
<b>TRAILS AT ASPEN RIDGE</b>			
FILING NO. 4 8" SANITARY SEWER PLANS			
<b>WASTEWATER PLAN &amp; PROFILE</b>			
DESIGNED BY:	BAS	SCALE:	DATE ISSUED:
DRAWN BY:	JLW	HORIZ 1" = 40'	JULY, 2025
CHECKED BY:	NMS	VERT. 1" = 10'	SHEET 7 OF 12
			DRAWING No. SS05



Know what's below.  
Call before you dig.



UTILITY CROSSING DETAILS				
CROSSING #	N & E	TOP OF PIPE	BTM OF PIPE	VERT. SEP.
13	N 8156.91 E 13375.46	8" PVC SEWER 5889.40	8" PVC WATER 5895.90	6.50'
14	N 8330.13 E 13326.92	8" PVC SEWER 5893.97	12" PVC WATER 5900.08	6.11'
15	N 8641.09 E 13287.58	8" PVC SEWER 5898.76	8" PVC WATER 5906.56	7.80'



THE LOCATIONS OF EXISTING ABOVE GROUND AND UNDERGROUND UTILITIES ARE SHOWN IN AN APPROXIMATE WAY ONLY. THE CONTRACTOR SHALL DETERMINE THE EXACT LOCATION OF ALL EXISTING UTILITIES BEFORE COMMENCING WORK. THE CONTRACTOR SHALL BE FULLY RESPONSIBLE FOR ANY AND ALL DAMAGES WHICH MIGHT BE CAUSED BY HIS FAILURE TO EXACTLY LOCATE AND PRESERVE ANY AND ALL ABOVE GROUND AND UNDERGROUND UTILITIES.

THE WIDEFIELD WATER AND SANITATION DISTRICT RECOGNIZES THE DESIGN ENGINEER AS HAVING RESPONSIBILITY FOR THE DESIGN AND HAS LIMITED ITS SCOPE OF REVIEW ACCORDINGLY.

**WIDEFIELD WATER AND SANITATION DISTRICT  
WASTEWATER DESIGN APPROVAL**

DATE: \_\_\_\_\_ BY: \_\_\_\_\_  
PROJECT NUMBER: \_\_\_\_\_

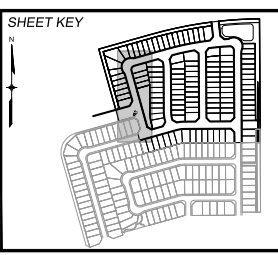
IN CASE OF ERRORS OR OMISSIONS WITH THE WATER DESIGN AS SHOWN ON THIS DOCUMENT THE STANDARDS AS DEFINED IN THE "RULES AND REGULATIONS FOR INSTALLATION OF WASTEWATER MAINS AND SERVICES" SHALL RULE.

**APPROVAL EXPIRES 180 DAYS FROM DESIGN APPROVAL**

REFERENCE DRAWINGS	DESCRIPTION	DATE	BY
1	SHORTENED WATER SERVICES TO PROPERTY LINE	10/14/2022	CV

COMPUTER FILE MANAGEMENT	
FILE NAME:	S:\21.886.038 (Trails F6)\100 Dwg\104 Plan Sets\Construction Plans\Utility Plans\Sanitary Plan\SS01.dwg
CTB FILE:	Matrix(black).ctb
PLOT DATE:	July 28, 2025 9:10:52 AM
THIS DRAWING IS CURRENT AS OF PLOT DATE AND MAY BE SUBJECT TO CHANGE.	



**BENCHMARK**  
COLORADO SPRINGS UTILITIES (FIMS) MONUMENT F206  
A BERNTSEN TOP SECURITY MONUMENT SYSTEM WITH A 3.5-INCH DIAMETER ALUMINUM CAP IN A ROAD BOX, LOCATED ON THE NORTHWEST CORNER OF FONTAINE BOULEVARD AND POWERS BOULEVARD.  
ELEVATION - 5897.89' U.S. SURVEY FT

**BASIS OF BEARING**  
BEARINGS ARE BASED ON THE NORTH LINE OF THE NORTHWEST QUARTER OF SECTION 9, TOWNSHIP 15 SOUTH, RANGE 65 WEST OF THE 6TH P.M. SAID LINE BEARS S89°15'12"E FROM THE NORTHWEST CORNER OF SAID SECTION 9 (2 1/2' AULM. CAP PLS 17664) TO THE N 1/4 CORNER OF SAID SECTION 9 (3 1/2' AULM. CAP PLS 10377)

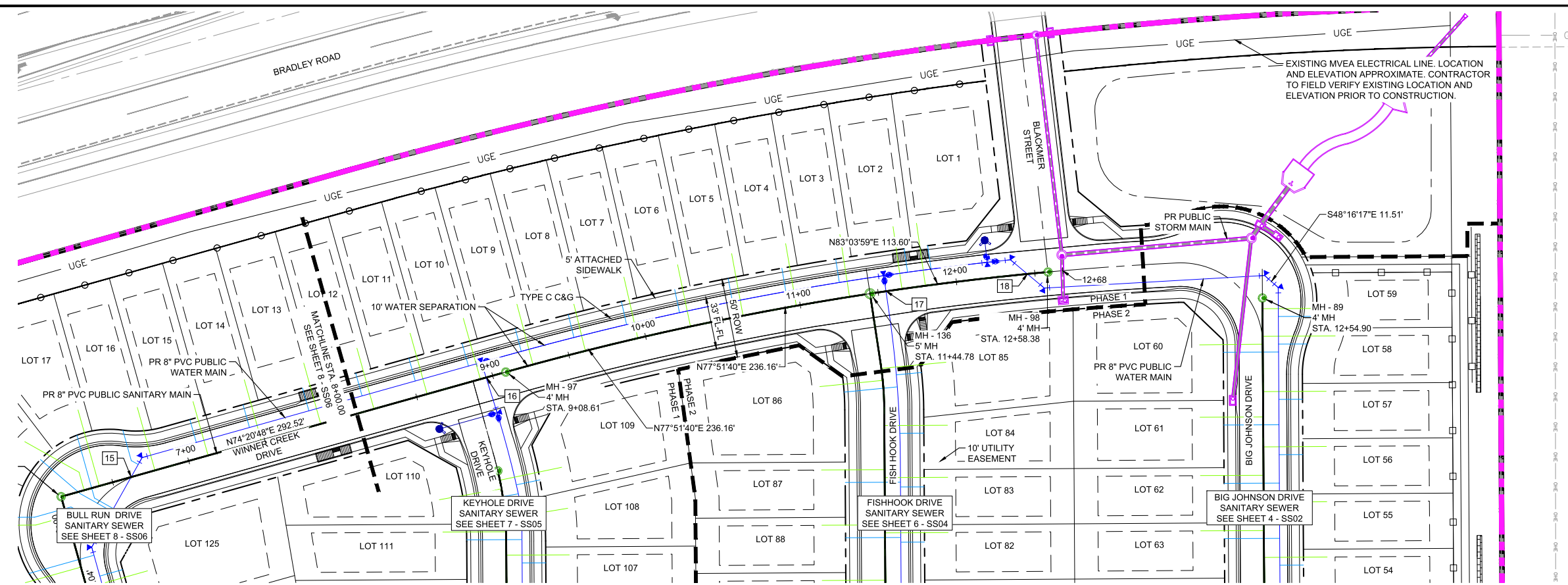


<b>TRAILS AT ASPEN RIDGE</b>			
FILING NO. 4 8" SANITARY SEWER PLANS			
<b>WASTEWATER PLAN &amp; PROFILE</b>			
DESIGNED BY:	BAS	SCALE:	DATE ISSUED:
DRAWN BY:	JLW	HORIZ. 1" = 40'	JULY, 2025
CHECKED BY:	NMS	VERT. 1" = 10'	SHEET 8 OF 12
FOR AND ON BEHALF OF MATRIX DESIGN GROUP, INC. PROJECT No. 21.886.038			DRAWING No. <b>SS06</b>

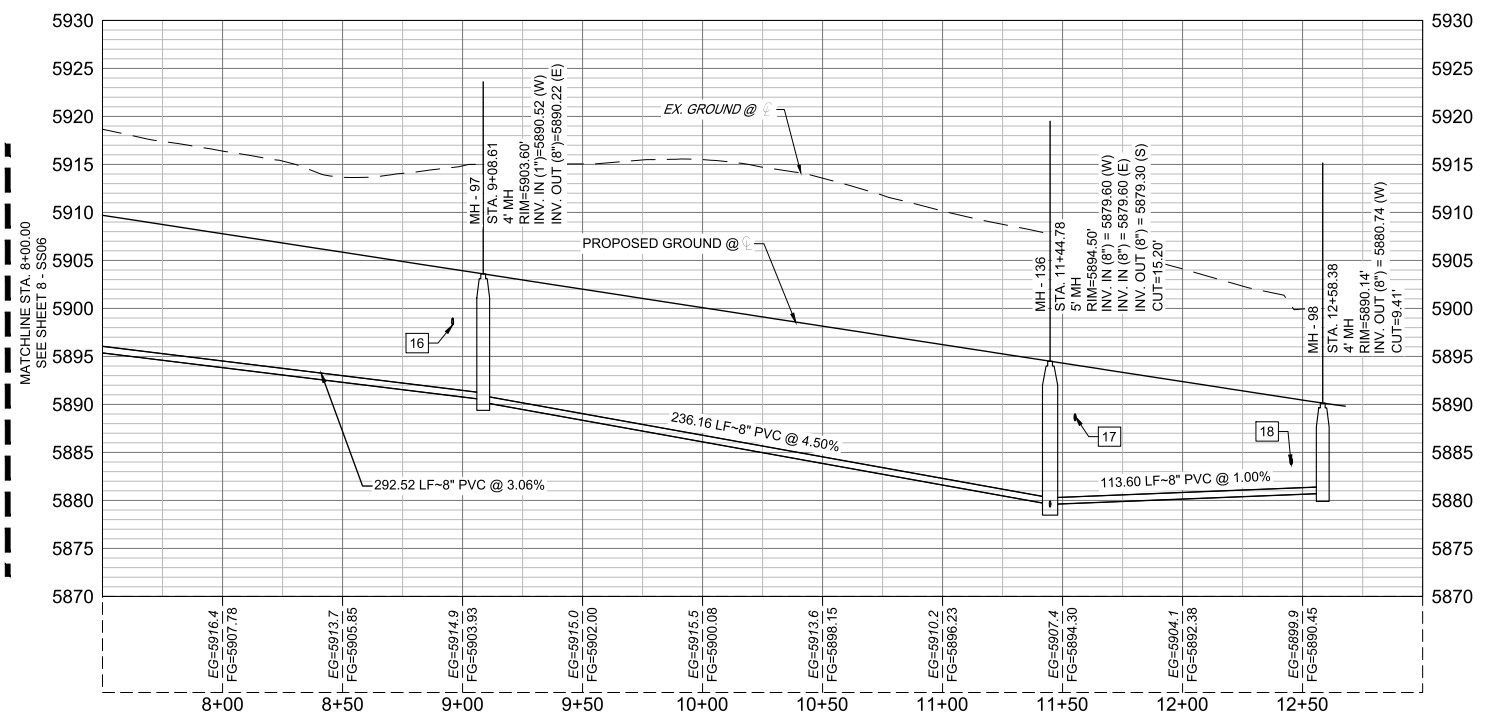
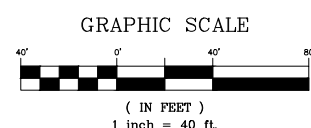


Know what's below. Call before you dig.

NOTE: CURVILINEAR PIPE TO BE ACHIEVED USING 3° BEND AT EVERY OTHER JOINT.



UTILITY CROSSING DETAILS				
CROSSING #	N & E	TOP OF PIPE	BTM OF PIPE	VERT. SEP.
16	N 8704.16 E 13512.68	8" PVC SEWER 5891.60	8" PVC WATER 5898.29	6.69'
17	N 8758.76 E 13765.98	8" PVC SEWER 5880.39	8" PVC WATER 5888.30	7.91'
18	N 8770.00 E 13858.47	8" PVC SEWER 5881.30	8" PVC WATER 5883.72	2.42'



BullRun\_WinnerCreek-SAN PROFILE  
SCALE: (H) 1" = 40' (V) 1" = 10'  
START STA: 7+50.00, END STA: 13+00.00

THE LOCATIONS OF EXISTING ABOVE GROUND AND UNDERGROUND UTILITIES ARE SHOWN IN AN APPROXIMATE WAY ONLY. THE CONTRACTOR SHALL DETERMINE THE EXACT LOCATION OF ALL EXISTING UTILITIES BEFORE COMMENCING WORK. THE CONTRACTOR SHALL BE FULLY RESPONSIBLE FOR ANY AND ALL DAMAGES WHICH MIGHT BE CAUSED BY HIS FAILURE TO EXACTLY LOCATE AND PRESERVE ANY AND ALL ABOVE GROUND AND UNDERGROUND UTILITIES.

THE WIDEFIELD WATER AND SANITATION DISTRICT RECOGNIZES THE DESIGN ENGINEER AS HAVING RESPONSIBILITY FOR THE DESIGN AND HAS LIMITED ITS SCOPE OF REVIEW ACCORDINGLY.

**WIDEFIELD WATER AND SANITATION DISTRICT  
WASTEWATER DESIGN APPROVAL**

DATE: \_\_\_\_\_ BY: \_\_\_\_\_  
PROJECT NUMBER: \_\_\_\_\_

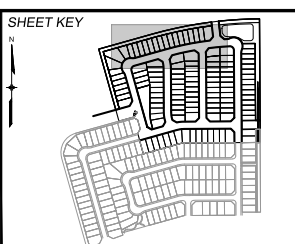
IN CASE OF ERRORS OR OMISSIONS WITH THE WATER DESIGN AS SHOWN ON THIS DOCUMENT THE STANDARDS AS DEFINED IN THE "RULES AND REGULATIONS FOR INSTALLATION OF WASTEWATER MAINS AND SERVICES" SHALL RULE.

APPROVAL EXPIRES 180 DAYS FROM DESIGN APPROVAL

REFERENCE DRAWINGS	DATE	DESCRIPTION	CV BY
1	10/14/2022	SHORTENED WATER SERVICES TO PROPERTY LINE	

COMPUTER FILE MANAGEMENT	
FILE NAME:	S:\21.886.038 (Trails F6)\100 Dwg\104 Plan Sets\Construction Plans\Utility Plans\Sanitary Plan\SS01.dwg
CTB FILE:	Matrix(black).ctb
PLOT DATE:	July 28, 2025 9:11:03 AM
THIS DRAWING IS CURRENT AS OF PLOT DATE AND MAY BE SUBJECT TO CHANGE.	



**BENCHMARK**  
COLORADO SPRINGS UTILITIES (FIMS) MONUMENT F206  
A BERNTSEN TOP SECURITY MONUMENT SYSTEM WITH A 3.5-INCH DIAMETER ALUMINUM CAP IN A ROAD BOX, LOCATED ON THE NORTHWEST CORNER OF FONTAINE BOULEVARD AND POWERS BOULEVARD.  
ELEVATION - 5897.89' U.S. SURVEY FT

**BASIS OF BEARING**  
BEARINGS ARE BASED ON THE NORTH LINE OF THE NORTHWEST QUARTER OF SECTION 9, TOWNSHIP 15 SOUTH, RANGE 65 WEST OF THE 6TH P.M. SAID LINE BEARS S89°51'23"E FROM THE NORTHWEST CORNER OF SAID SECTION 9 (2 1/2' AULM. CAP PLS 17664) TO THE N 1/4 CORNER OF SAID SECTION 9 (3 1/2' AULM. CAP PLS 10377)



**TRAILS AT ASPEN RIDGE**

FILING NO. 4  
8" SANITARY SEWER PLANS

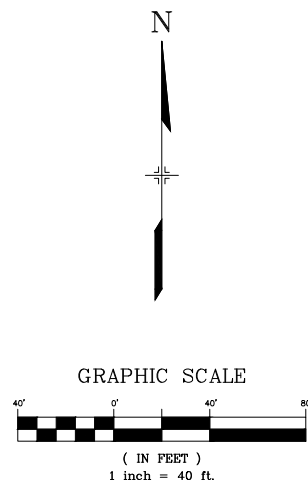
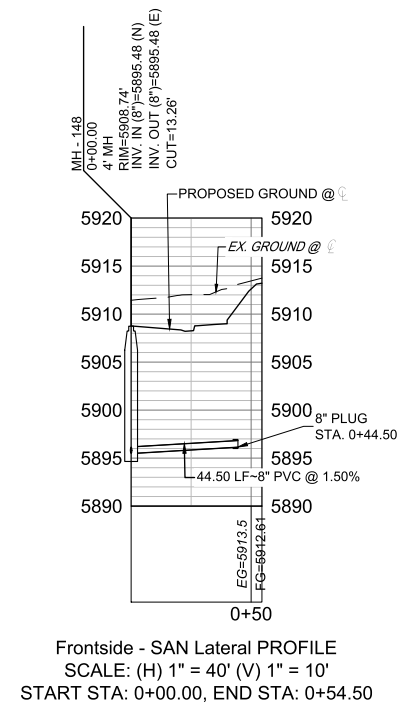
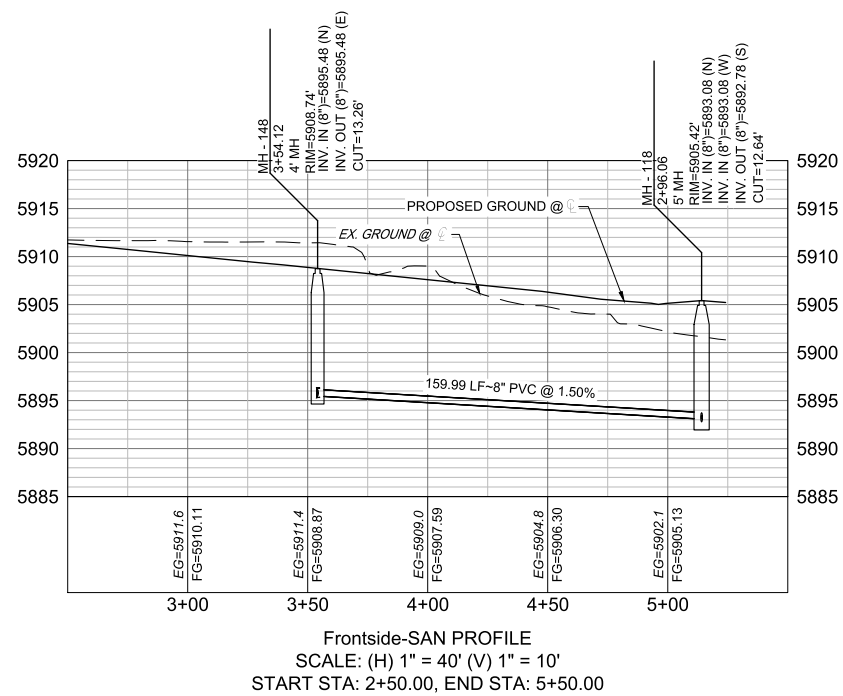
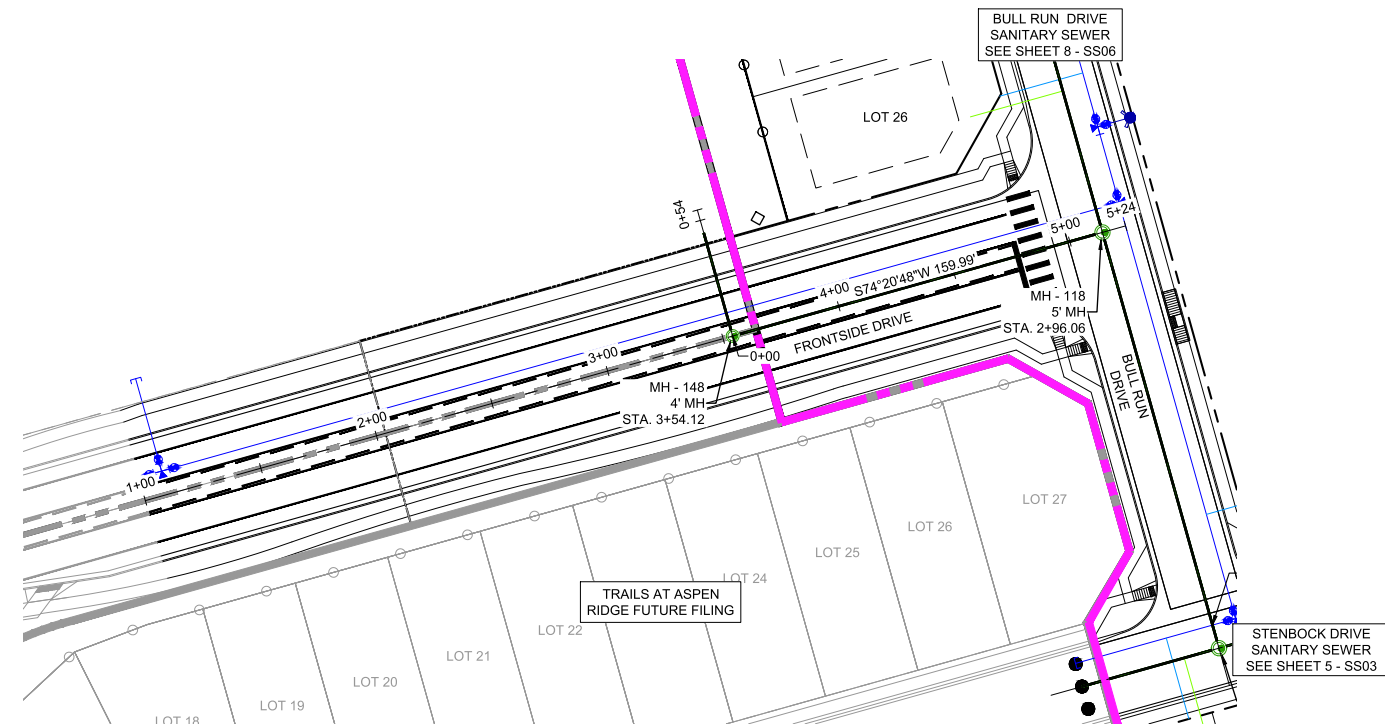
**WASTEWATER PLAN & PROFILE**

DESIGNED BY:	BAS	SCALE:	DATE ISSUED:	JULY, 2025	DRAWING No.
DRAWN BY:	JLW	HORIZ:	1" = 40'		
CHECKED BY:	NMS	VERT:	1" = 10'	SHEET	9 OF 12

PROJECT No. 21.886.038



Know what's below.  
Call before you dig.



THE LOCATIONS OF EXISTING ABOVE GROUND AND UNDERGROUND UTILITIES ARE SHOWN IN AN APPROXIMATE WAY ONLY. THE CONTRACTOR SHALL DETERMINE THE EXACT LOCATION OF ALL EXISTING UTILITIES BEFORE COMMENCING WORK. THE CONTRACTOR SHALL BE FULLY RESPONSIBLE FOR ANY AND ALL DAMAGES WHICH MIGHT BE CAUSED BY HIS FAILURE TO EXACTLY LOCATE AND PRESERVE ANY AND ALL ABOVE GROUND AND UNDERGROUND UTILITIES.

THE WIDEFIELD WATER AND SANITATION DISTRICT RECOGNIZES THE DESIGN ENGINEER AS HAVING RESPONSIBILITY FOR THE DESIGN AND HAS LIMITED ITS SCOPE OF REVIEW ACCORDINGLY.

**WIDEFIELD WATER AND SANITATION DISTRICT  
WASTEWATER DESIGN APPROVAL**

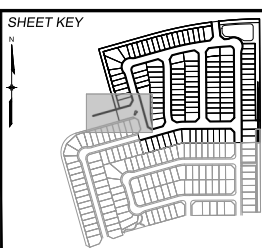
DATE: \_\_\_\_\_ BY: \_\_\_\_\_

PROJECT NUMBER: \_\_\_\_\_

IN CASE OF ERRORS OR OMISSIONS WITH THE WATER DESIGN AS SHOWN ON THIS DOCUMENT THE STANDARDS AS DEFINED IN THE "RULES AND REGULATIONS FOR INSTALLATION OF WASTEWATER MAINS AND SERVICES" SHALL RULE.

APPROVAL EXPIRES 180 DAYS FROM DESIGN APPROVAL

REFERENCE DRAWINGS	NO.	DATE	DESCRIPTION	CV	BY
	1	10/14/2022	SHORTENED WATER SERVICES TO PROPERTY LINE		
<b>COMPUTER FILE MANAGEMENT</b>					
FILE NAME: S:\21.886.038 (Trails F6)\100 Dwg\104 Plan Sets\Construction Plans\Utility Plans\Sanitary Plan\SS01.dwg					
CTB FILE: Matrix(black).ctb					
PLOT DATE: July 28, 2025 9:11:16 AM					
THIS DRAWING IS CURRENT AS OF PLOT DATE AND MAY BE SUBJECT TO CHANGE.					



**BENCHMARK**  
COLORADO SPRINGS UTILITIES (FIMS) MONUMENT F206  
A BERNTSEN TOP SECURITY MONUMENT SYSTEM WITH A 3.5-INCH DIAMETER ALUMINUM CAP IN A ROAD BOX, LOCATED ON THE NORTHWEST CORNER OF FONTAINE BOULEVARD AND POWERS BOULEVARD.  
ELEVATION - 5897.89' U.S. SURVEY FT

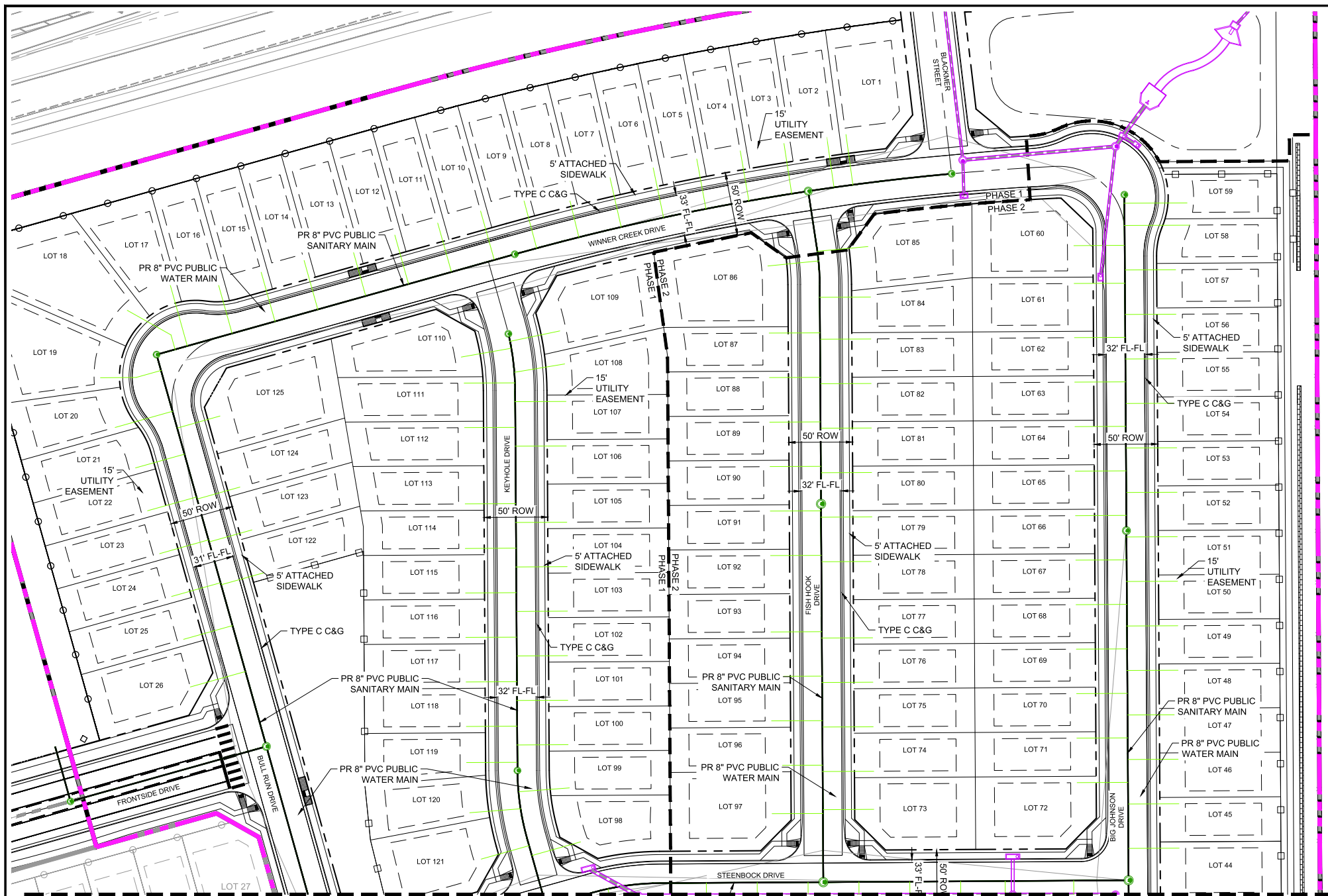
**BASIS OF BEARING**  
BEARINGS ARE BASED ON THE NORTH LINE OF THE NORTHWEST QUARTER OF SECTION 9, TOWNSHIP 15 SOUTH, RANGE 05 WEST OF THE 6TH P.M. SAID LINE BEARS S89°51'23"E FROM THE NORTHWEST CORNER OF SAID SECTION 9 (2 1/2' AULM. CAP PLS 17664) TO THE N 1/4 CORNER OF SAID SECTION 9 (3 1/2' AULM. CAP PLS 10377)



<b>TRAILS AT ASPEN RIDGE</b>			
FILING NO. 4 8" SANITARY SEWER PLANS			
<b>WASTEWATER PLAN &amp; PROFILE</b>			
DESIGNED BY: BAS	SCALE: 1" = 40'	DATE ISSUED: JULY, 2025	DRAWING No. SS08
DRAWN BY: JLW	HORIZ: 1" = 40'	SHEET 10 OF 12	
CHECKED BY: NMS	VERT: 1" = 10'		

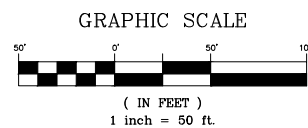


Know what's below.  
Call before you dig.



SANITARY SERVICE TABLE				
LOT #	BEARING	LENGTH	NORTHING	EASTING
27	N15°39'12\"W	40.00	8104.72	13374.51
28	N15°39'12\"W	40.00	8115.50	13412.98
29	N15°38'07\"W	40.00	8126.30	13451.54
30	N15°38'07\"W	40.00	8137.09	13490.05
31	N15°38'07\"W	40.00	8147.89	13528.57
32	N15°39'12\"W	40.00	8158.68	13567.09
33	N11°35'48\"W	40.00	8169.36	13606.26
34	N00°14'51\"W	40.00	8173.21	13675.72
35	N00°14'51\"W	40.00	8173.46	13715.72
36	N00°14'51\"W	40.00	8173.70	13755.72
37	N00°14'51\"W	38.25	8175.69	13795.71
38	N00°20'48\"W	40.00	8174.18	13835.78
39	N00°14'51\"W	40.00	8174.42	13875.71
40	N00°14'51\"W	40.00	8174.64	13910.71
41	N00°14'16\"W	45.00	8169.96	13964.58
42	S89°45'05\"W	40.36	8100.40	14048.23
43	S89°45'12\"W	39.62	8145.26	14047.94
575	S89°39'12\"W	40.36	8055.33	14048.51
576	S89°39'12\"W	39.64	8010.33	14048.78
577	S89°39'12\"W	39.64	7985.33	14048.93
578	S89°39'12\"W	39.64	7897.20	14049.46
579	S89°39'12\"W	40.36	7852.20	14049.74
580	S89°39'12\"W	39.64	7807.20	14050.01
581	S89°39'12\"W	40.00	7762.20	14050.28
582	S89°39'12\"W	40.36	7737.20	14050.43
583	S89°39'12\"W	40.00	7672.21	14050.82

MATCHLINE  
SEE SHEET 12 - SS10



THE LOCATIONS OF EXISTING ABOVE GROUND AND UNDERGROUND UTILITIES ARE SHOWN IN AN APPROXIMATE WAY ONLY. THE CONTRACTOR SHALL DETERMINE THE EXACT LOCATION OF ALL EXISTING UTILITIES BEFORE COMMENCING WORK. THE CONTRACTOR SHALL BE FULLY RESPONSIBLE FOR ANY AND ALL DAMAGES WHICH MIGHT BE CAUSED BY HIS FAILURE TO EXACTLY LOCATE AND PRESERVE ANY AND ALL ABOVE GROUND AND UNDERGROUND UTILITIES.

THE WIDEFIELD WATER AND SANITATION DISTRICT RECOGNIZES THE DESIGN ENGINEER AS HAVING RESPONSIBILITY FOR THE DESIGN AND HAS LIMITED ITS SCOPE OF REVIEW ACCORDINGLY.

**WIDEFIELD WATER AND SANITATION DISTRICT  
WASTEWATER DESIGN APPROVAL**

DATE: \_\_\_\_\_ BY: \_\_\_\_\_

PROJECT NUMBER: \_\_\_\_\_

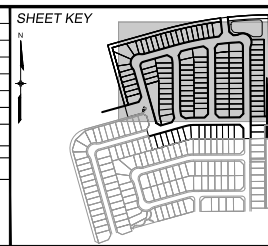
IN CASE OF ERRORS OR OMISSIONS WITH THE WATER DESIGN AS SHOWN ON THIS DOCUMENT THE STANDARDS AS DEFINED IN THE "RULES AND REGULATIONS FOR INSTALLATION OF WASTEWATER MAINS AND SERVICES" SHALL RULE.

**APPROVAL EXPIRES 180 DAYS FROM DESIGN APPROVAL**

REFERENCE DRAWINGS	NO.	DATE	DESCRIPTION	CV BY
	1	10/14/2022	SHORTENED WATER SERVICES TO PROPERTY LINE	

COMPUTER FILE MANAGEMENT	
FILE NAME:	S:\21.886.038 (Trails F6)\100 Dwg\104 Plan Sets\Construction Plans\Utility Plans\Sanitary Plan\SS08.dwg
CTB FILE:	Matrix(black).ctb
PLOT DATE:	July 28, 2025 9:11:52 AM
THIS DRAWING IS CURRENT AS OF PLOT DATE AND MAY BE SUBJECT TO CHANGE.	



**BENCHMARK**  
COLORADO SPRINGS UTILITIES (FIMS) MONUMENT F206  
A BERNTSEN TOP SECURITY MONUMENT SYSTEM WITH A 3.5-INCH DIAMETER ALUMINUM CAP IN A ROAD BOX, LOCATED ON THE NORTHWEST CORNER OF FONTAINE BOULEVARD AND POWERS BOULEVARD.  
ELEVATION - 5897.89' U.S. SURVEY FT

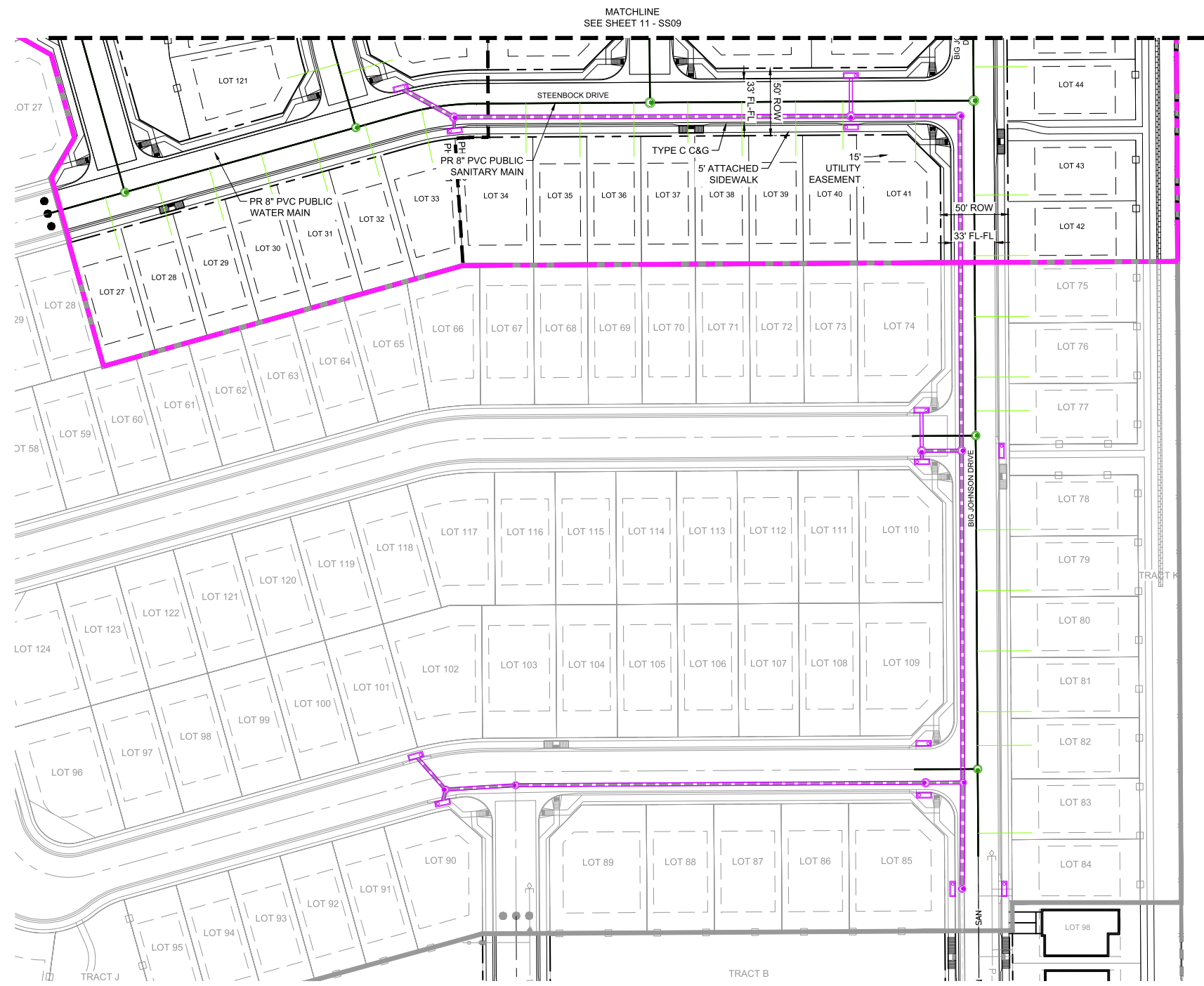
**BASIS OF BEARING**  
BEARINGS ARE BASED ON THE NORTH LINE OF THE NORTHWEST QUARTER OF SECTION 9, TOWNSHIP 15 SOUTH, RANGE 65 WEST OF THE 6TH P.M. SAID LINE BEARS S89°51'23\"E FROM THE NORTHWEST CORNER OF SAID SECTION 9 (2 1/2' AULM. CAP PLS 17664) TO THE N 1/2' CORNER OF SAID SECTION 9 (3 1/2' AULM. CAP PLS 10377)



<b>TRAILS AT ASPEN RIDGE</b>			
FILING NO. 4 8" SANITARY SEWER PLANS			
<b>SANITARY SERVICE PLAN</b>			
DESIGNED BY:	BAS	SCALE:	DATE ISSUED:
DRAWN BY:	JLW	HORIZ 1" = 50'	JULY, 2025
CHECKED BY:	NMS	VERT. N/A	SHEET 11 OF 12
			DRAWING No. <b>SS09</b>



Know what's below.  
Call before you dig.



SANITARY SERVICE TABLE				
LOT #	BEARING	LENGTH	NORTHING	EASTING
27	N15°39'12\"W	40.00	8104.72	13374.51
28	N15°39'12\"W	40.00	8115.50	13412.98
29	N15°38'07\"W	40.00	8126.30	13451.54
30	N15°38'07\"W	40.00	8137.09	13490.05
31	N15°38'07\"W	40.00	8147.89	13528.57
32	N15°39'12\"W	40.00	8158.68	13567.09
33	N11°35'48\"W	40.00	8169.36	13606.26
34	N00°14'51\"W	40.00	8173.21	13675.72
35	N00°14'51\"W	40.00	8173.46	13715.72
36	N00°14'51\"W	40.00	8173.70	13755.72
37	N00°14'51\"W	38.25	8175.69	13795.71
38	N00°20'48\"W	40.00	8174.18	13835.78
39	N00°14'51\"W	40.00	8174.42	13875.71
40	N00°14'51\"W	40.00	8174.64	13910.71
41	N00°14'16\"W	45.00	8169.96	13964.58
42	S89°45'05\"W	40.36	8100.40	14048.23
43	S89°45'12\"W	39.62	8145.26	14047.94
575	S89°39'12\"W	40.36	8055.33	14048.51
576	S89°39'12\"W	39.64	8010.33	14048.78
577	S89°39'12\"W	39.64	7985.33	14048.93
578	S89°39'12\"W	39.64	7897.20	14049.46
579	S89°39'12\"W	40.36	7852.20	14049.74
580	S89°39'12\"W	39.64	7807.20	14050.01
581	S89°39'12\"W	40.00	7762.20	14050.28
582	S89°39'12\"W	40.36	7737.20	14050.43
583	S89°39'12\"W	40.00	7672.21	14050.82

THE LOCATIONS OF EXISTING ABOVE GROUND AND UNDERGROUND UTILITIES ARE SHOWN IN AN APPROXIMATE WAY ONLY. THE CONTRACTOR SHALL DETERMINE THE EXACT LOCATION OF ALL EXISTING UTILITIES BEFORE COMMENCING WORK. THE CONTRACTOR SHALL BE FULLY RESPONSIBLE FOR ANY AND ALL DAMAGES WHICH MIGHT BE CAUSED BY HIS FAILURE TO EXACTLY LOCATE AND PRESERVE ANY AND ALL ABOVE GROUND AND UNDERGROUND UTILITIES.

THE WIDEFIELD WATER AND SANITATION DISTRICT RECOGNIZES THE DESIGN ENGINEER AS HAVING RESPONSIBILITY FOR THE DESIGN AND HAS LIMITED ITS SCOPE OF REVIEW ACCORDINGLY.

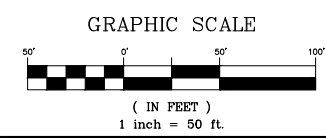
**WIDEFIELD WATER AND SANITATION DISTRICT  
WASTEWATER DESIGN APPROVAL**

DATE: \_\_\_\_\_ BY: \_\_\_\_\_

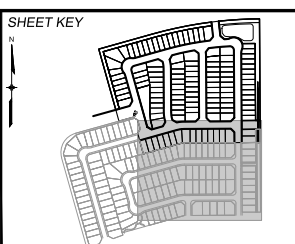
PROJECT NUMBER: \_\_\_\_\_

IN CASE OF ERRORS OR OMISSIONS WITH THE WATER DESIGN AS SHOWN ON THIS DOCUMENT THE STANDARDS AS DEFINED IN THE "RULES AND REGULATIONS FOR INSTALLATION OF WASTEWATER MAINS AND SERVICES" SHALL RULE.

**APPROVAL EXPIRES 180 DAYS FROM DESIGN APPROVAL**



REFERENCE DRAWINGS			
No.	DATE	DESCRIPTION	CV BY
1	10/14/2022	SHORTENED WATER SERVICES TO PROPERTY LINE	
<b>REVISIONS</b>			
<b>COMPUTER FILE MANAGEMENT</b>			
FILE NAME: S:\21.886.038 (Trails F6)\100 Dwg\104 Plan Sets\Construction Plans\Utility Plans\Sanitary Plan\SS08.dwg			
CTB FILE: Matrix(black).ctb			
PLOT DATE: July 28, 2025 9:12:01 AM			
THIS DRAWING IS CURRENT AS OF PLOT DATE AND MAY BE SUBJECT TO CHANGE.			



**BENCHMARK**  
COLORADO SPRINGS UTILITIES (FIMS) MONUMENT F206  
A BERNTSEN TOP SECURITY MONUMENT SYSTEM WITH A 3.5-INCH DIAMETER ALUMINUM CAP IN A ROAD BOX, LOCATED ON THE NORTHWEST CORNER OF FONTAINE BOULEVARD AND POWERS BOULEVARD.  
ELEVATION - 5897.89' U.S. SURVEY FT

**BASIS OF BEARING**  
BEARINGS ARE BASED ON THE NORTH LINE OF THE NORTHWEST QUARTER OF SECTION 9, TOWNSHIP 15 SOUTH, RANGE 65 WEST OF THE 6TH P.M. SAID LINE BEARS S89°51'23\"E FROM THE NORTHWEST CORNER OF SAID SECTION 9 (2 1/2' AULM. CAP PLS 17664) TO THE N 1/4 CORNER OF SAID SECTION 9 (3 1/2' AULM. CAP PLS 10377)

PREPARED BY:



**TRAILS AT ASPEN RIDGE**

FILING NO. 4  
8" SANITARY SEWER PLANS

**SANITARY SERVICE PLAN**

DESIGNED BY: BAS	SCALE: 1" = 50'	DATE ISSUED: JULY, 2025	DRAWING No. SS10
DRAWN BY: JLW	HORIZ: N/A	SHEET 12 OF 12	
CHECKED BY: NMS	VERT: N/A		