

**COLA, LLC**  
555 Middle Creek Parkway, Suite 380  
Colorado Springs, Colorado 80921



**Matrix**

This Page is intentionally blank

# **STORMWATER MANAGEMENT PLAN (SWMP)**

## **Trails at Aspen Ridge Filing No. 4 El Paso County, Colorado**

### **Applicant (Owner):**

COLA, LLC  
Randy O'Leary  
555 Middle Creek Parkway, Suite 380  
Colorado Springs, CO 80921

### **SWMP Prepared By:**

Nicole Schanel, PE  
Project Engineer  
Matrix Design Group, Inc.

### **Qualified Stormwater Manager:**

Stephen Schoonover, QSM  
Site Supervisor  
COLA, LLC

### **Contractor Information:**



Matrix Design Group, Inc.  
2435 Research Parkway, Suite 300  
Colorado Springs, CO 80920  
(719) 575-0100

This Page is intentionally blank

## **TABLE OF CONTENTS**

1.	GENERAL INFORMATION .....	7
1.1	Site Description.....	7
1.2	Site Location .....	8
1.3	Project Contact Information.....	9
1.4	Disturbance Area and Import/Export Volume .....	9
1.5	Construction Activities .....	10
1.6	Construction Sequencing and Phasing.....	10
1.7	Soils.....	12
1.8	Vegetation .....	13
1.9	Allowable Non-Stormwater Discharges .....	13
1.10	Receiving Waters .....	13
1.11	Stream Crossings within the Project Area .....	14
1.12	Pollution Sources .....	14
1.13	Spill Prevention and Response Plan.....	15
2.	BEST MANAGEMENT PRACTICES .....	18
2.1	Structural BMPs .....	18
2.2	Non-Structural BMPs .....	21
2.3	Housekeeping BMPs .....	22
2.4	Stormwater Management Plan Non-Applicable Items .....	25
3.	FINAL STABILIZATION AND LONG-TERM STORMWATER MANAGEMENT.....	26
3.1	Inspection and Maintenance.....	26
3.2	BMP Replacement and Failed BMPs .....	27
3.3	Qualified Inspectors.....	27
3.4	Additional SWMP and BMP Practices .....	28

### **Attachments**

- SWMP Drawings
- SWMP Inspection and Maintenance Log
- Soil Survey of El Paso County Area Soils Map
- FEMA FIRM Floodplain Maps
- CDPHE General Permit

This Page is intentionally blank

## **1. GENERAL INFORMATION**

This Stormwater Management Plan (SWMP) is being submitted on behalf of COLA, LLC. for a tract of land known as Trails at Aspen Ridge Filing No. 4 in El Paso County, Colorado. The purpose of this SWMP is to identify potential source areas that may contribute pollutants to stormwater and to identify Best Management Practices (BMPs) that will reduce or eliminate adverse water quality impacts. Development, implementation, and maintenance of this SWMP will provide the general contractor with the framework for reducing soil erosion and minimizing pollutants in stormwater during construction of the project site.

This SWMP has been prepared in accordance with engineering, hydrologic and pollution control practices and will cover this facility only (the extents of the Project construction site) using BMPs to reduce the pollutants in stormwater discharges as described in Section 2 of this SWMP. The SWMP will be administrated by the Qualified Stormwater Manager identified in Section 1.3. The Qualified Stormwater Manager's duties include the following:

- Implement the SWMP
- Oversee installation and maintenance of BMPs as identified in the SWMP
- Implement and oversee employee training
- Conduct or provide for inspection and monitoring activities
- Identify potential pollutant sources and make sure they are included in the SWMP
- Identify any deficiencies in the SWMP and make sure they are corrected
- Ensure that any changes in construction plans, phasing, or use of BMPs are addressed in the SWMP

The provisions of this SWMP must be implemented as they are written and updated, from the initiation of construction until final stabilization is complete. The Water Quality Control Division reserves the right to review the SWMP, and to require the permittee to develop and implement additional measures to prevent and control pollution as is needed.

### **1.1 Site Description**

The Trails at Aspen Ridge Filing No. 4, located in Fountain, Colorado, is an 18-acre site which will consist of 124 single-family detached homes. The site is located at Latitude: 38.760916 and Longitude: -104.675832 and is bounded to the north by existing Bradley Road. Powers Boulevard is west of the site, Fontane Boulevard is south of the site, and Marksheffel Road is east of the site.



**1.2 Site Location**





### 1.3 Project Contact Information

Contact Information/Responsible Parties			
<b>Owner</b>	Randy O'Leary COLA, LLC 555 Middle Creek Parkway Colorado Springs, CO 80921		roleary@desertviewhomes.com
<b>Project Manager/Site Supervisor</b>	Stephen Schoonover, QSM COLA, LLC 555 Middle Creek Parkway, Suite 380 Colorado Springs, CO 80921		sschoonover@desertviewhomes.com
<b>Qualified Stormwater Manager</b>	Stephen Schoonover, QSM COLA, LLC 555 Middle Creek Parkway, Suite 380 Colorado Springs, CO 80921		sschoonover@desertviewhomes.com
<b>SWMP Preparer</b>	Nicole Schanel, PE Matrix Design Group 2435 Research Pkwy Suite 300 Colorado Springs, CO 80920	719-575-0100	Nicole.Schanel@matrixdesigngroup.com

### 1.4 Disturbance Area and Import/Export Volume

The following is the total site area and the expected area of disturbance. Any changes to the area of disturbance (current disturbance) must be updated as changes occur.

Total Site Area	<b>21.13 acres</b>	Date: 06/10/2021
Initial Estimate of Disturbance Area	<b>21.13 acres</b>	Date: 06/10/2021
Import/Export Volume Estimate	<b>89,145 CY</b>	<input type="checkbox"/> Import <input checked="" type="checkbox"/> Export
Updated Disturbance Area		
Updated Disturbance Area		
Updated Disturbance Area		

### **1.5 Construction Activities**

Initial stabilization methods (BMPs) will be installed prior to construction. Following initial BMPs, construction will consist initially of site clearing and grubbing, temporary stabilization BMPs, initial grading, utility installation, road paving, final grading, followed by home construction on each lot. Open spaces will be maintained with the vegetation placed prior to commencement of construction. There will be no concrete or asphalt batched onsite. All concrete and asphalt will be imported from off-site batch plants. Final stabilization and removal of temporary control measures will be completed following placement of permanent landscaping and hardscaping.

### **1.6 Construction Sequencing and Phasing**

Construction Schedule		Estimated Start Date	Estimated Completion Date
Anticipated Project Start Date		Nov 2021	Feb 2022
1. Install Initial BMPs		Nov 2021	Nov 2021
2. Clearing and Grubbing		Nov 2021	Dec 2021
3. Temporary Stabilization BMPs		Nov 2021	Feb 2022
4. Road Grading		Nov 2021	Nov 2021
5. Site Grading		Nov 2021	Dec 2021
6. Utility Installation		Dec 2021	Dec 2021
7. Curb and Gutter		Nov 2021	Nov 2021
8. Street Paving		Feb 2022	Mar 2022
9. Vertical Construction		Mar 2022	Nov 2022
10. Final Stabilization		Nov 2022	Dec 2022
11. Removal of Temporary Control Measures			Dec 2022
Anticipated Project End Date			Dec 2022
Construction Phase	Description and Conservation Measures		
Install Initial BMPs	Silt Fencing (perimeter BMP) will be installed at designated locations (see Plan) as outlined in Section 2. The VTC will be installed at the entrance/exit to any disturbed areas as work progresses as outlined in Section 2. All construction traffic must enter/exit the site at approved construction access points. Sediment basins shall be installed prior to any land-disturbing activities that will rely on the basin for stormwater control (Section 2).		
Clearing and Grubbing	Clearing and Grubbing of the site will be the initial construction phase. BMPs outlined in Section 2 will be used to control erosion and sediment runoff.		
Temporary Stabilization BMPs	Temporary stabilization measures to control erosion and sediment runoff will be implemented as outlined in Section 2.		
Site Grading	Erosion and sediment runoff during site grading will be controlled by BMPs outlined in Section 2.		

Road Grading	Road grading will be completed using BMPs outlined in Section 2 to control erosion and sediment runoff.
Utility Installation	Following site grading, utility corridors will be constructed beginning with sewer and water and followed by storm sewer. Dry utilities will be constructed last. BMPs outlined in Section 2 will be used to control erosion and sediment runoff.
Curb and Gutter	Curb and Gutter will be installed following final road grading activities. BMPs outlined in Section 2 will be used to control erosion and sediment runoff.
Final Grading	Final grading will be completed following installation of curb and gutter at the site. BMPs outlined in Section 2 will be used to control erosion and sediment runoff.
Street Paving	Streets and roads will be paved following final site grading activities. BMPs outlined in Section 2 will be used to control erosion and sediment runoff.
Vertical Construction	<p>Vertical construction will be phased on a lot by lot basis as follows:</p> <p>BMPs outlined in Section 2 will be used to control erosion and sediment runoff prior to beginning vertical construction (<b>Initial Phase</b>).</p> <p>The <b>Interim Phase</b> of vertical construction includes foundation excavation and construction, construction of structural framing, exterior completion, and minor utility work. Inlet protection outlined in Section 2 should remain in place during the interim construction phase. Perimeter BMPs as outlined in Section 2 will remain in place. Temporary stabilization BMPs (Section 2) should be implemented on all disturbed areas that are not subject to active construction.</p> <p>The <b>Interim to Final Phase</b> of construction includes interior/exterior structure completion, concrete flatwork, and final lot grading activities. Inlet protection outlined in Section 2 should remain in place during this construction phase. Perimeter BMPs should be evaluated for effectiveness and maintained as needed. Temporary stabilization BMPs should be used on all disturbed areas not subject to active construction activities.</p> <p>Final site grading, cleanup, and landscaping is the <b>Final Phase</b> of vertical construction. In most cases, BMPs can be removed immediately prior to final grading, and landscaping activities. In areas where landscaping and hardscaping are not planned, BMPs should be maintained and temporary stabilization measures should remain in place. Sites should be monitored until stabilization requirements are met.</p>
Final Stabilization and Removal of Temporary BMPs	Once construction activity ceases, the area shall be stabilized with permanent landscaping and/or seed and mulch as outlined in Section 2. Final stabilization is complete when all ground disturbing activities are complete and all disturbed areas have either a uniform vegetative cover

with an individual plant density of 70% of pre-disturbance levels, permanent hardscaping or paving is in place, or an equivalent permanent alternative stabilization method is implemented. Once stabilization is complete, all temporary sediment and erosion control measures shall be removed.

## **1.7 Soils**

The United States Department of Agriculture, Natural Resources Conservation Service (NRCS); Web Soil Survey of El Paso County Area, Colorado, published by the United States Department of Agriculture, dated June 2020, was utilized to investigate the existing general soil types within and surrounding the Project area. A soil map for this area is provided in the Attachments. Per the information given within the Soil Conservation Survey, hydrologic soil group “B” characteristics are predominant across the study area (an estimated 99.6% coverage area) as described in the following table.

Soil ID Number	Soil Type	Soil Description	Estimated Coverage Area	Hydrologic Classification
52	Manzanst Clay Loam, 0% to 3% slopes	Surface runoff is moderate, partially-draining soil, the hazard of erosion and soil blowing are moderate to high	0.4%	C
56	Nelson-Tassel Fine Sandy Loams, 3% to 18% slopes	Surface runoff is moderate, partially-draining soil, the hazard of erosion and soil blowing are moderate to high	99.2%	B
86	Stoneham Sandy Loam, 3% to 8% slopes	Surface runoff is moderate, partially-draining soil, the hazard of erosion and soil blowing are moderate to high	0.4%	B

## Trails at Aspen Ridge Filing No. 4 Stormwater Management Plan

Runoff Coefficients for Rational Method from the Urban Drainage and Flood Control District (UDFCD 2001) are listed below:

Land Use or Surface Characteristics	Percent Impervious	Runoff Coefficients											
		2-year		5-year		10-year		25-year		50-year		100-year	
		HSG A&B	HSG C&D	HSG A&B	HSG C&D	HSG A&B	HSG C&D	HSG A&B	HSG C&D	HSG A&B	HSG C&D	HSG A&B	HSG C&D
<b>Business</b>													
Commercial Areas	95	0.79	0.80	0.81	0.82	0.83	0.84	0.85	0.87	0.87	0.88	0.88	0.89
Neighborhood Areas	70	0.45	0.49	0.49	0.53	0.53	0.57	0.58	0.62	0.60	0.65	0.62	0.68
<b>Residential</b>													
1/8 Acre or less	65	0.41	0.45	0.45	0.49	0.49	0.54	0.54	0.59	0.57	0.62	0.59	0.65
1/4 Acre	40	0.23	0.28	0.30	0.35	0.36	0.42	0.42	0.50	0.46	0.54	0.50	0.58
1/3 Acre	30	0.18	0.22	0.25	0.30	0.32	0.38	0.39	0.47	0.43	0.52	0.47	0.57
1/2 Acre	25	0.15	0.20	0.22	0.28	0.30	0.36	0.37	0.46	0.41	0.51	0.46	0.56
1 Acre	20	0.12	0.17	0.20	0.26	0.27	0.34	0.35	0.44	0.40	0.50	0.44	0.55
<b>Industrial</b>													
Light Areas	80	0.57	0.60	0.59	0.63	0.63	0.66	0.66	0.70	0.68	0.72	0.70	0.74
Heavy Areas	90	0.71	0.73	0.73	0.75	0.75	0.77	0.78	0.80	0.80	0.82	0.81	0.83
<b>Parks and Cemeteries</b>													
Playgrounds	13	0.07	0.13	0.16	0.23	0.24	0.31	0.32	0.42	0.37	0.48	0.41	0.54
Railroad Yard Areas	40	0.23	0.28	0.30	0.35	0.36	0.42	0.42	0.50	0.46	0.54	0.50	0.58
<b>Undeveloped Areas</b>													
Historic Flow Analysis-- Greenbelts, Agriculture	2	0.03	0.05	0.09	0.16	0.17	0.26	0.26	0.38	0.31	0.45	0.36	0.51
Pasture/Meadow	0	0.02	0.04	0.08	0.15	0.15	0.25	0.25	0.37	0.30	0.44	0.35	0.50
Forest	0	0.02	0.04	0.08	0.15	0.15	0.25	0.25	0.37	0.30	0.44	0.35	0.50
Exposed Rock	100	0.89	0.89	0.90	0.90	0.92	0.92	0.94	0.94	0.95	0.95	0.96	0.96
Offsite Flow Analysis (when landuse is undefined)	45	0.26	0.31	0.32	0.37	0.38	0.44	0.44	0.51	0.48	0.55	0.51	0.59
<b>Streets</b>													
Paved	100	0.89	0.89	0.90	0.90	0.92	0.92	0.94	0.94	0.95	0.95	0.96	0.96
Gravel	80	0.57	0.60	0.59	0.63	0.63	0.66	0.66	0.70	0.68	0.72	0.70	0.74
<b>Drive and Walks</b>													
Drive and Walks	100	0.89	0.89	0.90	0.90	0.92	0.92	0.94	0.94	0.95	0.95	0.96	0.96
Roofs	90	0.71	0.73	0.73	0.75	0.75	0.77	0.78	0.80	0.80	0.82	0.81	0.83
Lawns	0	0.02	0.04	0.08	0.15	0.15	0.25	0.25	0.37	0.30	0.44	0.35	0.50

All exposed soil throughout the Project site will be landscaped and/or seeded with a locally approved seed mix as described in Section 2.2.

### 1.8 Vegetation

The existing vegetation consists of native grasses and scrub oak. Based on site visits and a review of aerial photography, the vegetative cover at Aspen Ridge Filing No. 4 is approximately 100%.

### 1.9 Allowable Non-Stormwater Discharges

Uncontaminated groundwater may be discharged onsite, but may not leave the site in the form of surface runoff. Concrete washout areas will be used as described in Section 2.3.

### 1.10 Receiving Waters

Ultimate Receiving Water(s): Fountain Creek

Stormwater Outfalls/Storm Sewer System Discharge:

*Northeast Pond:*

- Discharge: 18" Reinforced Concrete Pipe (RCP)
- Location of Discharge: Northeast corner of site
- Receiving Conveyance: Existing swale drains east to Jimmy Camp Creek

### **1.11 Stream Crossings within the Project Area**

No stream crossings are located within the Project Area.

### **1.12 Pollution Sources**

Pollutants that result from clearing, grading, maintenance, operations, and excavation have the potential to be present in stormwater runoff and are potential sources for stormwater contamination. The following is a description of potential source areas for pollutant that may be released during construction, maintenance, operation, and excavation activities:

**Source Area:**

1. Disturbed and stored soils, erosion.
2. Vehicle tracking of sediments.
3. Management of contaminated soils.
4. Loading and unloading operations.
5. Outdoor storage activities (erodible building materials, fertilizers, chemicals, etc.).
6. Vehicle and equipment maintenance, cleaning, and fueling operations.
7. Significant dust or particulate generation activities.
8. Routine maintenance activities involving fertilizers, pesticides, herbicides, detergents, fuels, solvents, etc.
9. Onsite waste management practices (waste piles, liquid wastes, dumpsters, chemical containers etc.).
10. Concrete truck/equipment washing
11. Non-industrial waste sources (trash, portable toilets)

The following pollutants may impact stormwater runoff for each of the source areas listed above.

Potential Pollutant	Chemical/Physical Description	Stormwater Impacts	Potential Source Area (listed above)
Pesticides (insecticides, fungicides, herbicides, rodenticides)	Various colored to colorless liquid, powder, pellets, or grains	Chlorinated hydrocarbons, organophosphates, carbamates, arsenic	3, 4, 5, 8, 9
Fertilizer	Liquid or solid grains	Nitrogen, phosphorous	3, 4, 5, 8, 9

**Trails at Aspen Ridge Filing No. 4**  
**Stormwater Management Plan**

Cleaning solvents	Colorless, blue, or yellow-green liquid	Perchloroethylene, methylene chloride, trichloroethylene, petroleum distillates	3, 4, 5, 6, 8, 9, 10, 11
Concrete	White solid	Limestone, sand	3, 5, 9, 10, 11
Paints	Various colored liquid	Metal oxides, stoddard solvent, talc, calcium carbonate, arsenic	3, 5, 6, 9
Wood preservatives	Clear amber or dark brown liquid	Stoddard solvent, petroleum distillates, arsenic, copper, chromium	3, 5, 8
Hydraulic oil/fluids	Brown oily petroleum hydrocarbon	Mineral oil	3, 4, 5, 6, 8, 9, 10
Gasoline	Colorless, pale brown or pink petroleum hydrocarbon	Benzene, ethyl benzene, toluene, xylene, MTBE	2, 3, 4, 5, 6, 8, 9, 10
Diesel Fuel	Clear, blue-green to yellow liquid	Petroleum distillate, oil & grease, naphthalene, xylenes	2, 3, 4, 5, 6, 8, 9, 10
Kerosene	Pale yellow liquid petroleum hydrocarbon	Coal oil, petroleum distillates	5, 6, 8, 9
Antifreeze/coolant	Clear green/yellow liquid	Ethylene glycol, propylene glycol, heavy metals (copper, lead, zinc)	2, 3, 4, 5, 6, 8, 9, 10
Particulates	Dust, airborne particulates	Sediment	1, 2, 4, 5, 6, 10, 11
Biological	Human/animal waste	Bacterial	11

The largest possible sources of non-stormwater pollution will be from trucks during equipment maintenance and refueling operations. The contractor shall be responsible for any spill cleanup during refueling operations in accordance with applicable city, county and state regulations. The contractor will also be responsible for cleanup of any off-site vehicle tracking on paved roads. Other sources of pollution such as vehicle washing, chemical storage or waste disposal are not anticipated. No recognized environmental conditions (REC) have been identified within the project site.

### **1.13 Spill Prevention and Response Plan**

The Spill Prevention and Response Plan (SPRP) is designed to outline requirements for the handling and management of hazardous substances (pesticides, herbicides, fuels, cleaners, etc.) stored or used at the Project area.



### **Materials Management and Handling**

- Chemicals that have the potential to be released in stormwater are to be used only where necessary and, in a manner, consistent with industry-standard uses and handling procedures.
- Ensure all hazardous materials are properly labeled.
- Store, dispense, and/or use hazardous substances in a way that prevents releases.
- Provide secondary containment when storing hazardous substances in bulk quantities (greater than 55-gallons).
- Maintain good housekeeping practices for chemicals stored onsite.
- Complete routine checks of hazardous substance storage areas.
- Provide monthly inspections of hazardous substance storage areas, secondary containment, and above ground and/or underground storage tanks.

### **Spill Containment and Reporting**

A release of any chemical, oil, petroleum product, sewage, etc. that has the potential to enter surface water, groundwater, dry gullies, or storm sewers leading to surface water must be reported to the CDPHE immediately (25-8-601 CRS). When a spill is identified, the proper spill response should be implemented:

1. Assess the area for any immediate dangers or health and safety concerns. If any immediate dangers are present, call 911.
2. Contain any spilled materials. Assess the size of the leak and immediate threat of the spill reaching storm drains or permeable surfaces. If there is an immediate threat and no safety concerns, attempt to block the spill from reaching storm drains or other impermeable surfaces.
3. Stop the source of the spill if possible.
4. Cleanup spill in a timely manner. Use adsorbent materials (cat litter) and/or sock booms or rags to clean up the spill. Dispose of used materials appropriately.
5. Report and record spills to Qualified Stormwater Manager. Once the spill has been contained and any immediate threat to storm drains or permeable surfaces has been minimized, contact the Qualified Stormwater Manager. If necessary, a specialized cleanup contractor should be used to clean up the remaining contamination.
6. Follow applicable Colorado Discharge Permit System (CDPS) terms and conditions regarding spill reporting and response.
7. Report spills to the Colorado Department of Public Health and Environment (CDPHE). For non-permitted activities or in the case of an activity where a permit does not address reporting of or response to a spill which may cause pollution of surface or subsurface waters of the State, notify the Environmental Release and Incident Reporting Line within 24 hours at **(877) 518-5608**. Reporting should include:
  - a. Name of responsible person or name of Qualified Stormwater Manager
  - b. An estimate of the date and time of the release
  - c. The location of the spill and its source (saddle tank, manhole, storage container, etc.),
  - d. The type of material spilled (untreated wastewater, petroleum products, etc.)
  - e. The estimated volume of the spill

- f. The time and date the spill was controlled or stopped
  - g. If the spill is ongoing, the estimated rate of flow and when the spill is expected to be controlled/contained
  - h. Measures being taken to contain, reduce, and/or clean the spill
  - i. A list of potentially impacted areas and known downstream water uses that will be or have been notified
  - j. The phone number and email of the Qualified Stormwater Manager.
- 8. Any accidental discharge to the sanitary sewer system must be reported immediately to the local sewer authority and the affected wastewater treatment plant.
- 9. Written notification following a reportable spill shall be submitted to the CDPHE within five days (5 CCR 1002-31, Section 61.8(5)(d)).

## **2. BEST MANAGEMENT PRACTICES**

Best Management Practices (BMPs) encompass a wide range of erosion and sediment control practices, both structural and non-structural in nature, that are intended to reduce or eliminate any possible water quality impacts from stormwater leaving a construction site. The individual BMPs appropriate for a particular construction site are largely dependent on the types of potential pollutant sources present, the nature of the construction activity, and specific-site conditions.

Most of the BMPs referenced herein are widely used in the construction industry. They generally involve a simple and low-cost approach and can be very effective *when properly installed and maintained*. To prevent soil from washing into the public right-of way or the undisturbed areas of the site, the following is a discussion of BMPs and an indication of which BMPs are expected to be implemented as part of this Project.

BMPs for all slopes, channels, ditches, or any disturbed land area shall be completed immediately after grading or earth disturbance has occurred. All temporary soil erosion control measures and BMPs shall be maintained until site reaches final stabilization and permanent soil erosion control measures are implemented.

The Stormwater Manager may modify the planned BMPs based on construction sequencing, site conditions, and/or other factors. The SWMP should be modified by field notes including dates of modifications and the purpose of the modification. The Grading and Erosion Control Plan should reflect what has been constructed or modified onsite. The Stormwater Manager will be responsible for documenting BMPs (including phasing of BMP implementation).

### **2.1 Structural BMPs**

Structural BMPs are used to minimize erosion and sediment transport and include but are not limited to: silt fencing, erosion control blankets, turf reinforcement mat, wattles/sediment control logs, earth dikes, drainage swales, sediment traps, gravel inlet protection, inlet/outlet protection, straw bales, concrete washout areas, and temporary or permanent sediment basins. Structural BMPs shall be coordinated with construction activities so the BMP is in place before construction begins. The structural BMPs outlined below are general definitions and guidelines. Project-specific specifications for selected BMPs are detailed in the SWMP Drawings included in the Attachments.

- Silt Fencing: A silt fence is a structural sediment control device that typically consists of a geotextile fabric attached to wooden stakes inserted into a ground trench and rising to a vertical height of approximately 18-inches. The silt fence is generally used as perimeter sediment control and as a primary containment around storage areas, staging areas, stockpiles, etc.

Used for this project? ☒ Yes ☐ No

*Application notes:* Temporary perimeter controls (e.g. silt fences) will be installed *before* any clearing and grading begins. The use of rebar, steel stakes, or steel fence posts to anchor silt fencing is prohibited. Once the site is cleaned and the surrounding disturbed areas are 70% established with vegetation, the silt fences around the Project site can be removed.

- **Erosion Control Blanket:** An erosion control blanket (ECB) is a rolled-fiber product typically made up of straw, coconut, or synthetic fibers that are used to prevent scour erosion, stabilize slopes, and to aid revegetation by providing a protective layer over seeded areas. Turf reinforcement mats are similar to ECBs and are made to withstand greater stress such as traffic, extended life, or continuous and frequent water flow. ECBs are available in both biodegradable and photodegradable varieties.

Used for this project? ☒ Yes ☐ No

*Application Notes:* Exposed slopes greater than 3:1 will be covered by an erosion control blanket. The use of rebar, steel stakes, or steel fence posts to anchor ECB is prohibited.

- **Sediment Control Logs:** SCLs are log-shaped, rolled straw products encased in a polypropylene monofilament filter fabric. SCLs are used for sediment control usually at the perimeter of a disturbance or as a channel check in low flow areas. Wattle can also be used for slope length reduction.

Used for this project? ☒ Yes ☐ No

*Application Notes:* SCLs that act as perimeter control shall be installed prior to any upgradient land-disturbing activities. SCLs may be used as small check dams in ditches and swales, however they should not be used in perennial streams or high velocity drainage ways.

- **Inlet Protection (gravel):** Storm sewer inlet protection is typically comprised of 1.5-inch angular rock (gravel) wrapped in a chicken wire mesh to form an approximate 6-inch diameter roll in varying lengths. The gravel roll should be firmly secured in front of the inlet opening with a spacing device to prevent the roll from entering the inlet. A sufficiently-sized overflow opening should be left to prevent flooding during high surface water flow volumes. The basic design applies to curb and drop-style inlets.

Used for this project? ☒ Yes ☐ No

*Application Notes:* Inlet protection measures for existing inlets shall be installed *before* clearing and grading is initiated.

- **Inlet/Outlet Protection:** Inlet/outlet protection can be composed of 4- to 6-inch rock (rip-rap) underlain with geotextile fabric placed at the outlet or inlet of a drainage pipe, culvert, or other areas where high surface water flow may be encountered. Geotextile socks filled with gravel may also be used as a temporary BMP. This BMP is used to reduce erosion sediment transport by reducing flow velocity.

Used for this project? ☒ Yes ☐ No

*Application Notes:* Temporary rip rap outlet protection specified in the SWMP specification drawings is for outlets intended to be utilized less than 2 years. Rough cut street control measures (geotextile socks filled with gravel or compacted earthen berms) shall be installed after a road has been cut and will not be paved for more than 14 days, or for temporary construction roads that have not received road base.

- **Straw Bale Barriers:** Bound straw bale barriers (SBB) are typically used for inlet protection or as drainage swale check dams. Installation of the bales is critical to avoid erosion at the ends of the bales.

Used for this project? ☐ Yes ☒ No

*Application Notes:* Straw bales shall consist of certified weed-free straw or hay and shall consist of approximately 5 cubic feet of straw or hay. Straw bales must weigh at least 35 pounds.

- **Drainage Swales:** Swales can be permanent or temporary and are typically designed to control storm water runoff in a non-erosive manner to a destination such as a detention pond or other stormwater collection facility. Swales can also be designed with velocity control devices and can be made of concrete or lined with materials such as rock or grass.

Used for this project? ☐ Yes ☒ No

*Application Notes:*

- **Sediment/Detention Basins:** Sediment/Detention basins are designed according to project size and runoff volume and are used for flood control and to aid in temporary retention of runoff to aid in sediment deposition. A release point for runoff water is typically present and consists of an emergency overflow or regulating structure.

Used for this project? ☒ Yes ☐ No

*Application Notes:* Sediment basins will be installed prior to any other land disturbing activities that rely on basins for stormwater control. Embankment materials shall consist of soil free of debris. Organic material, and rocks or concrete greater than 3-inches diameter and shall have a minimum of 15% by weight passing a No. 200 sieve. Embankment materials must be compacted to at least 95% of maximum density.

- **Vehicle Tracking Control:** VTC is used to limit off-site tracking of sediment from disturbed or unpaved areas to paved areas. VTC can include: TRM or mud mats installed at the point of access from unpaved areas (used when traffic is limited or light), a 1.5-inch diameter rock gravel access pad combined with pavement sweeping (used when traffic is limited or light), or a 3+-inch rock with geotextile underlayment combined with street sweeping (used for heavy construction traffic or at the main access point to a development site).

Used for this project? ☒ Yes ☐ No

*Application Notes:* VTC Entrances to disturbed areas will be constructed *before* clearing and grading begins.

## **2.2 Non-Structural BMPs**

Non-structural BMPs are implemented at the site to minimize erosion and sediment transport and may include temporary or permanent vegetation, mulching, landscaping, geotextiles, sod stabilization, surface roughening, vegetative buffer strips (VBS), and protection/preservation of trees and other mature vegetation. The non-structural BMPs outlined below are general definitions and guidelines. Project-specific specifications for selected BMPs are detailed in the SWMP Drawings included in the Attachments.

- *Temporary and permanent seeding:* Seeding of disturbed areas provides soil stabilization and helps prevent erosion and sediment transport. Seeding is usually performed by ripping the area, spreading the appropriate seed mix, and applying straw mulch at a rate of two tons per acre over the seeded area. In some cases, a tackifier may be used to anchor the straw mulch. Managing and applying the proper seed mix and following the specified maintenance procedures are very important in promoting timely growth of grasses while minimizing weed growth. This BMP is effective on slopes up to 3:1 and where soil conditions are adequate.

Used for this project? ☒ Yes ☐ No

*Application Notes:* A mixture developed for elevations 3,000 feet to 8,000 feet will provide natural cover under dryland conditions. Seed for this project will be broadcast spread at a rate of 20 to 25 pounds per acre or drilled at a rate of 15 to 20 pounds per acre. Overseeding will be broadcast spread at a rate of 10 to 15 pounds per acre or drilled at a rate of 5 to 10 pounds per acre. Seed mixture specifications are included in the attached SWMP Drawings. Seed will be mulched with weed-free straw mulch. Temporary seeding may be used on disturbed areas not planned for activity within 30 days. Top soil stock piles will be stabilized with temporary seed and mulch no later than fourteen days from the last construction activities in that area. Once construction activity ceases permanently in an area, the area will be stabilized with permanent seed and mulch. Permanent seeding will be used in designated Open Space areas. Soils that are stockpiled for more than 30 days shall be mulched and seeded with a temporary or permanent grass cover within 21 days of stockpile construction.

- *Mulching:* A layer of suitable mulch is typically applied at a rate of two tons per acre and can be tacked or fastened by an approved method suitable for the type of mulch used. Rough cut streets can be mulched in lieu of a layer of aggregate road base or asphalt paving. Seeding shall be placed in areas designated as being in an interim state.

Used for this project? ☒ Yes ☐ No

*Application Notes:* A layer of suitable mulch shall be applied at a rate of two tons per acre to all disturbed portions of the site within 21 days of the completion of grading. If the area is to remain

in an interim state for more than 60 days, seeding BMPs shall be used. Mulch can be used in areas of rough cut streets unless a layer of road base or asphalt paving is planned within 21 days.

- **Landscaping:** Landscaping includes rock, mulch, sod, trees, bushes, geofabrics, hardscaping, etc. as identified in the final stabilization specifications. Landscaping may be done by the developer or by the property owner.

Used for this project? ☒ Yes ☐ No

*Application Notes:* Landscaping is planned for all disturbed areas that are not paved, hardscaped, or covered with permanent seeding.

- **Surface Roughening:** Surface roughening is the mechanical breaking up of soils as a short-term method of temporary stabilization in areas where temporary seeding is not practical or in areas where active construction is ongoing. Surface roughening is achieved through ripping or tilling the surface to increase surface area and infiltration.

Used for this project? ☒ Yes ☐ No

*Application Notes:* Surface roughening using scarifying methods such as disking or dragging bucket teeth over areas of disturbed soils parallel to slope contours will be completed in areas of active construction.

- **Vegetative Buffer Strips:** VBS are areas of original vegetation kept in place during construction that are preserved and maintained to filter sediment deposited from sheet flow. Maintenance includes cleanup of sediment and re-vegetation of VBS as necessary. Maintaining vegetative buffers is important around sensitive areas such as wetlands, waterways, etc.

Used for this project? ☒ Yes ☐ No

*Application Notes:* Pre-existing vegetation shall be protected and maintained within 50 horizontal feet of waters of the State unless unfeasible.

### **2.3 Housekeeping BMPs**

Housekeeping BMPs are maintenance practices implemented to keep the site clean, reduce potential chemical or biological exposures, and to minimize the tracking of soils to hard surfaces and airborne particles. Maintenance BMPs include street sweeping, dust suppression techniques, spill prevention and response (Section 1.13), waste management and disposal, and materials handling and management (Section 1.14). Project-specific specifications for selected BMPs are detailed in the SWMP Drawings included in the Attachments.



- Street Sweeping: Street sweeping is the practice of removing soil clumps, scraping packed dirt/mud, and sweeping loose soils tracked onto paved surfaces to prevent sediment transport in runoff water. Materials removed as part of this BMP should be deposited in an area contained by perimeter BMPs or disposed offsite.

Used for this project? ☒ Yes ☐ No

*Application Notes:* Street sweeping methods will be employed in areas of ingress/egress from paved areas to the construction site. Vehicle tracking of soils and construction debris off-site shall be minimized. Materials tracked offsite shall be cleaned up and properly disposed immediately. The owner, site developer, contractor, and their agents shall be responsible for the removal of dirt, rock, construction debris, trash, sediment, and sand that accumulates in public right of ways, storm sewers, or other drainage conveyance system and stormwater appurtenances.

- Dust Suppression: Dust suppression BMPs are typically used to minimize the transport of fine particles through the air. Dust suppression techniques may include keeping the site wet using water trucks or other wetting methods or covering of loose soils in disturbance areas. During periods of high wind, the following activities should be monitored: limited street sweeping, restriction of major grading activities, restriction of soil stockpiling, controlling vehicular speed.

Used for this project? ☒ Yes ☐ No

*Application Notes:* A water source shall be available onsite during earthwork operations and utilized as required to minimize dust from earth working operations and wind.

- Load Covering: Trucks or other vehicles carrying cut or fill materials to or from the site should be covered to prevent accidental loss of material during transport onto public right of ways

Used for this project? ☒ Yes ☐ No

*Application Notes:* Loads of cut and fill must be properly covered.

- Site Waste Management and Disposal: Construction waste disposal and trash generated by onsite personnel should be collected in dumpsters or similar trash containers and emptied on a regular basis. Construction waste and trash should be kept in a secure area and lidded if required to avoid accidental spreading of waste. Trash containers should be kept on permeable surfaces within perimeter BMPs. Loose trash should be collected daily and disposal services should be on a regular schedule to avoid overfilling of containers. Hazardous materials may not be disposed in trash containers and no waste materials should be buried onsite.

Used for this project? ☒ Yes ☐ No

*Application Notes:* Trash at the site will be cleared daily and kept in secured and/or covered receptacles. Waste disposal will be managed through a licensed contractor.

- **Portable Toilet Facilities:** A proper amount of portable toilets should be located at the Project Site and should be kept within the perimeter BMPs on permeable surfaces. Portable toilets should be anchored to prevent tipping and should be at least five feet behind curbs and at least 50 feet from any storm sewer inlets. Toilets should also be kept away from preferential flow pathways and from all water bodies. Regularly scheduled maintenance should be in place to empty and clean the receptacles to prevent overflow and waste collecting.

Used for this project? ☒ Yes ☐ No

*Application Notes:* Portable toilets will be provided and maintained through a private contractor.

- **Concrete Washout:** Concrete washout areas typically consist of an unlined pit in the ground with a vehicle tracking control (VTC) entrance and are designed to capture and contain concrete washout water. In areas with a high groundwater table, poly-lined pits or a portable waste bin may be used. Pits should be placed to minimize the potential for pollutant discharge. Washout basin deposits (hardened concrete waste) should be removed and properly disposed offsite as solid waste on a regular basis after liquids have evaporated.

Used for this project? ☒ Yes ☐ No

*Application Notes:* Concrete wash water shall be contained and disposed in accordance with the SWMP. No concrete wash water shall be discharged to or allowed to runoff to State waters. Concrete washout areas shall not be located in an area where shallow groundwater may be present or within 50 feet of a surface water body. Unless confined to a predefined, bermed containment area, the cleaning of concrete truck delivery chutes is prohibited at the Project area.

**2.4 Stormwater Management Plan Non-Applicable Items**

SWMP Checklist Number	Description	Comments
12	Spill prevention and pollution controls for dedicated batch plants	Asphalt/concrete batch plants not proposed
14	Location and description of any anticipated allowable non-stormwater discharge (ground water, springs, irrigation, discharge covered by CDPHE Low Risk Guidance, etc.)	Non-stormwater discharge not anticipated
16	Description of all stream crossings located within the project area or statement that no streams cross the project area	No streams cross the project site area
17f	Location of any dedicated asphalt / concrete batch plants	Asphalt/concrete batch plants not proposed
17i	Springs, streams, wetlands and other surface waters, including areas that require maintenance of preexisting vegetation within 50 feet of a receiving water	No streams cross the project site area
26	Project relies on control measures owned or operated by another entity, a documented agreement must be included in the SWMP that identifies location, installation, and design specifications, and maintenance requirements and responsibility of the control measure(s).	Project does not rely on control measures owned or operated by another entity.

### **3. FINAL STABILIZATION AND LONG-TERM STORMWATER MANAGEMENT**

Once construction activity ceases permanently in an area, the area shall be stabilized with permanent landscaping and/or seed and mulch as designated below. Final stabilization is complete when all ground disturbing activities are complete and all disturbed areas have either a uniform vegetative cover with an individual plant density of 70% of pre-disturbance levels, permanent hardscaping or paving is in place, or an equivalent permanent alternative stabilization method is implemented. Once stabilization is complete, all temporary sediment and erosion control measures shall be removed.

Final Stabilization for this site will consist of a combination of landscaping and permanent seeding including the following:

- *Landscaping.* Disturbed areas around finished units that are not paved or otherwise hardscaped should be landscaped on completion of the vertical structure. Weather may delay landscaping which may be offset by temporary measures such as erosion control blankets, wattles, inlet protection, or other BMPs outlined in Section 2.
- *Paving/Hardscaping.* Areas not planned for landscaping should be paved or hardscaped including roadways, sidewalks, driveways, parking areas, etc.
- *Temporary controls.* Temporary erosion and sediment control measures should be maintained on un-stabilized areas until landscaping or hardscaping activities are complete. Disturbed areas should be surface-roughened and slopes steeper than 3:1 should be covered with erosion control blankets. Temporary controls may be removed once stabilization is complete.
- *Permanent BMPs.* Permanent post-construction BMPs should remain onsite after construction activities have been completed and the site is stabilized. These BMPs may include detention facilities, storm drain systems, swales, and natural depressions.

#### **3.1 Inspection and Maintenance**

Visual inspections of all cleared and graded areas of the construction site will be performed on a minimum occurrence of once per week and/or within 24 hours of the end of any precipitation or snowmelt event that causes surface erosion. The inspection will be the responsibility of the Qualified Stormwater Manager. An inspection report form has been provided in the Attachments. The inspection will verify that the structural BMPs described in Section 2.1 of this SWMP are functioning properly, in good condition, up to date and continue to minimize erosion. The inspection will also verify that the procedures used to prevent stormwater contamination from construction materials and petroleum products are effective. The inspection logs will be signed by the Qualified Stormwater Manager. The following inspection and maintenance practices will be used to maintain erosion and sediment controls:

- Accumulated sediment and debris shall be removed from a BMP when the sediment/debris level reaches one half the height of the BMP or at any time that sediment or debris adversely impacts the functioning BMP.
- Built up sediment will be removed from silt fencing when it has reached one-third the height of the fence.
- Silt fences will be inspected for depth of sediment, for tears, to see if the fabric is securely attached to the fence posts, and to see that the fence posts are firmly in the ground.
- Sediment basins will be inspected for depth of sediment and built up sediment will be removed when it reaches 1 foot in depth.
- Temporary and permanent seeding will be inspected AND noted for bare spots, washouts, and healthy growth.
- The stabilized construction entrances will be inspected for sediment tracked on the road, for clean gravel, and to make sure that all traffic uses the stabilized entrance when leaving the site.
- The maintenance inspection report will be made after each inspection. A copy of the report form to be completed by the Qualified Stormwater Manager is provided in the Attachments. Completed forms will be maintained on-site during the entire construction project. Following construction and the expiration or inactivation of the permit, the completed forms will be retained at the general contractor's office, for a minimum of 3 years.
- If construction activities or design modifications are made to the site plan which could impact stormwater, this SWMP will be amended appropriately. The amended SWMP will have a description of the new activities that contribute to the increased pollutant loading and the planned source control activities.

### **3.2 BMP Replacement and Failed BMPs**

At a minimum, the contractor shall inspect and keep a log of all BMPs on a weekly basis and after a significant precipitation event. BMPs should be assessed by a qualified inspector to determine if new or replacement BMPs are necessary. Where BMPs have failed, the failure must be addressed as soon as possible to minimize discharge of additional pollutants. As new BMPs are installed and/or replaced, this SWMP should be updated to reflect the change(s).

### **3.3 Qualified Inspectors**

The Qualified stormwater manager will be sufficiently qualified for the required duties per the ECM Appendix I.5.2.A. Qualified inspectors should be knowledgeable in the principals and practices of erosion and sediment control and should have a good working knowledge of the regulation and BMPs included in this SWMP. Inspectors should also be able to anticipate site conditions and assess BMP functionality that could impact stormwater runoff.

### **3.4 Additional SWMP and BMP Practices**

An employee training program should be developed and implemented to educate employees about the requirements of the SWMP. This education program will include background on the components and goals of the SWMP and hands-on training in erosion controls, spill prevention and response, good housekeeping, proper material handling, disposal and control of waste, equipment fueling, and proper storage, washing, and inspection procedures.

The SWMP should be viewed as a “living document” that is continuously being reviewed and modified as a part of the overall process of evaluating and managing stormwater quality issues at the site. The qualified stormwater manager shall amend the SWMP when there is a change in design, construction, O&M of the site which would require the implementation of new or revised BMPs or if the SWMP proves to be ineffective in achieving the general objectives of controlling pollutants in stormwater discharges associated with construction activity or when BMPs are no longer necessary and are removed.

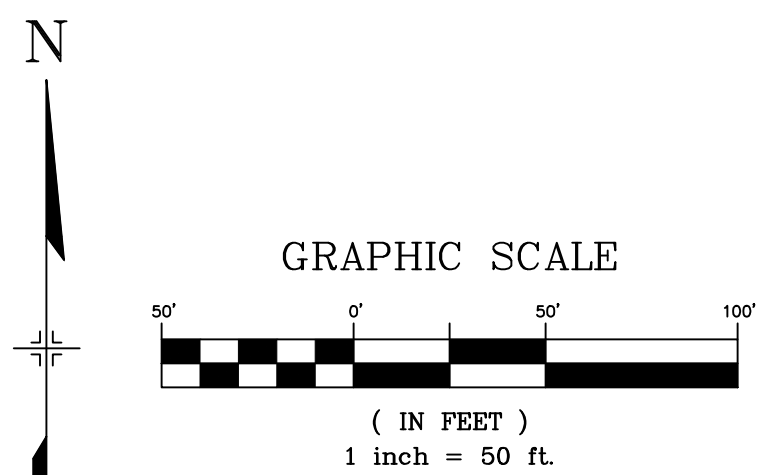
This plan was prepared in accordance with the CDPS General Permit. A copy of this permit is provided in the Attachments.

## **Attachments**



## **SWMP Drawings**



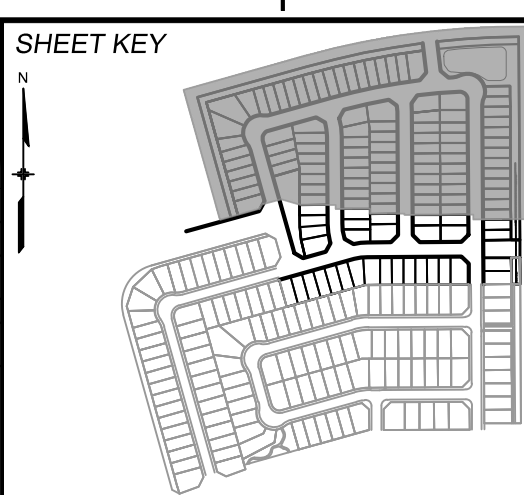
Know what's below.  
Call before you dig.

- HP LP HIGH POINT/LOW POINT
- ECB EROSION CONTROL BLANKET
- TM TEMPORARY MULCHING AND SEEDING
- SCL SEDIMENT CONTROL LOG
- VTC VEHICLE TRACKING CONTROL
- SB SEDIMENT BASIN
- SP CWA CONTRACTOR TO COORDINATE LOCATIONS OF CONCRETE WASHOUTS, STOCKPILES, AND STAGING AREAS WITH ADJACENT FILINGS
- IP INLET PROTECTION
- OP OUTLET PROTECTION
- SF SILT FENCE
- PROPOSED CONTOURS
- EXISTING CONTOURS
- SLOPE DIRECTION
- DRAINAGE FLOW ARROW
- DRAINAGE SWALE
- CUT/FILL LINE
- PROPERTY BOUNDARY
- LIMITS TO CONSTRUCTION/DISTURBANCE
- A LOT DRAINS TO STREET
- B LOT DRAINS TO STREET/REAR OF LOT
- T LOT DRAINAGE VARIES
- G GARDEN LEVEL BASEMENT
- W WALK OUT BASEMENT

BMP SEQUENCING	
INITIAL	SILT FENCE, CONSTRUCTION FENCE, VEHICLE TRACKING, TEMP SEDIMENT BASINS, ROUGH CUT STREET CONTROL
INTERIM	FLOW LINE SEDIMENT CONTROL LOGS, SEDIMENT CONTROL LOGS, CHECK DAMS, INLET PROTECTION, STOCKPILES, STAGING
FINAL	EROSION CONTROL BLANKETS, SEEDING & MULCHING

PCD FILING NO.: SF-21-024

REFERENCE DRAWINGS	
No.	DATE
DESCRIPTION REVISIONS	
COMPUTER FILE MANAGEMENT	
FILE NAME: S:\21.886.038 (Trails F6)\100 Plan Sets\Construction Plans\GEC Plan\GEC01.dwg	
CTB FILE: Matrix(black).ctb	
PLOT DATE: September 9, 2021 11:46:37 AM	
THIS DRAWING IS CURRENT AS OF PLOT DATE AND MAY BE SUBJECT TO CHANGE.	



**BENCHMARK**  
COLORADO SPRINGS UTILITIES (FIMS) MONUMENT F206  
A BERNTSEN TOP SECURITY MONUMENT SYSTEM WITH A 3.5-INCH DIAMETER ALUMINUM CAP IN A ROAD BOX, LOCATED ON THE NORTHWEST CORNER OF FONTAINE BOULEVARD AND POWERS BOULEVARD.  
ELEVATION - 5897.89' U.S. SURVEY FT

**BASIS OF BEARING**  
BEARINGS ARE BASED ON THE NORTH LINE OF THE NORTHWEST QUARTER OF SECTION 9, TOWNSHIP 15 SOUTH, RANGE 65 WEST OF THE 6TH P.M. SAID LINE BEARS S89°51'23"E FROM THE NORTHWEST CORNER OF SAID SECTION 9 (2 1/2" AULM. CAP PLS 17664) TO THE N 1/4 CORNER OF SAID SECTION 9 (3 1/4" AULM. CAP PLS 10377)

PREPARED BY:



SEAL

**PRELIMINARY**  
THIS DRAWING HAS NOT BEEN APPROVED BY GOVERNING AGENCIES AND IS SUBJECT TO CHANGE

FOR AND ON BEHALF OF  
MATRIX DESIGN GROUP, INC.  
PROJECT No. 21.886.038

DESIGNED BY: BAS SCALE: DATE ISSUED: AUGUST 2021 DRAWING No. GEC01  
CHECKED BY: NMS HORIZ. 1" = 50' SHEET 4 OF 8  
VERT. N/A

## TRAILS AT ASPEN RIDGE

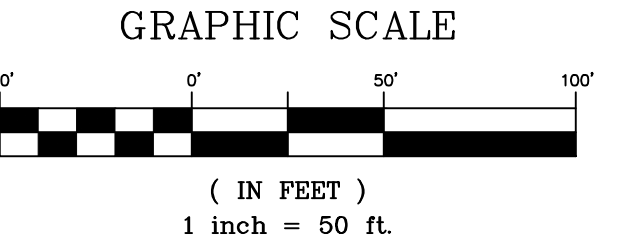
FILING NO.4  
GRADING & EROSION CONTROL PLANS

## GRADING &amp; EROSION CONTROL PLAN





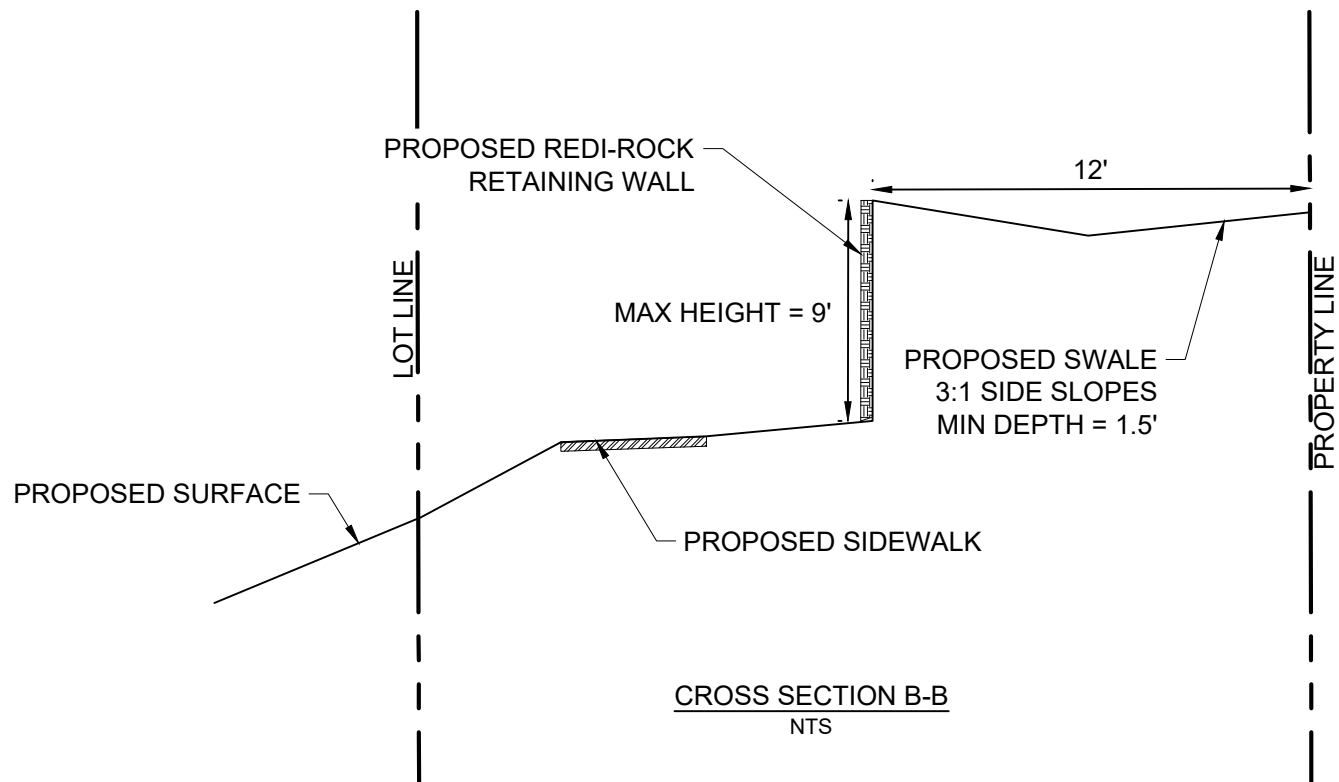
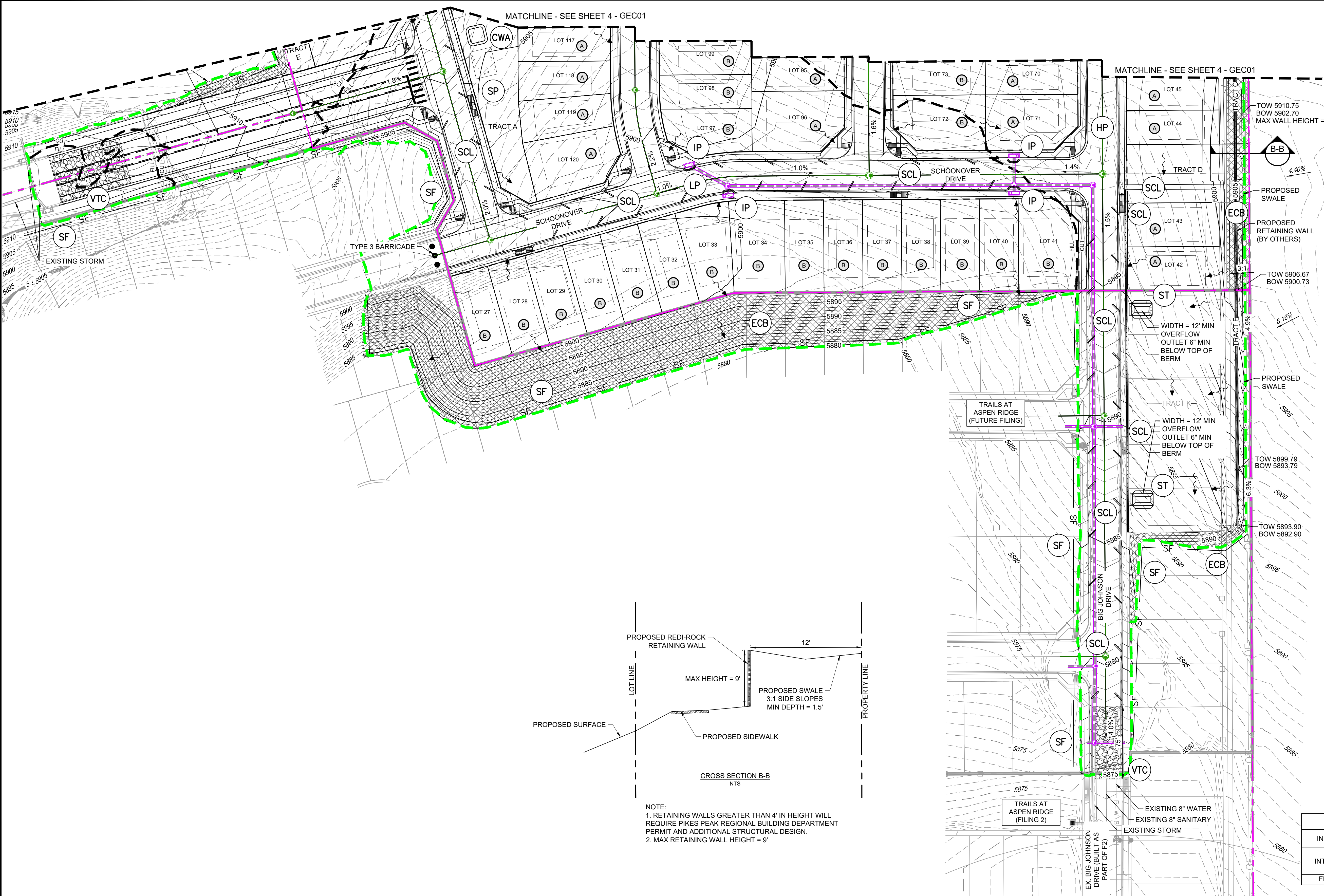
Know what's below.  
Call before you dig.



- HP LP HIGH POINT/LOW POINT
- ECB EROSION CONTROL BLANKET
- TM TEMPORARY MULCHING AND SEEDING
- SCL SEDIMENT CONTROL LOG
- VTC VEHICLE TRACKING CONTROL
- ST SEDIMENT TRAP
- SB SEDIMENT BASIN
- CWA CONTRACTOR TO COORDINATE LOCATIONS OF CONCRETE WASHOUTS, STOCKPILES, AND STAGING AREAS WITH ADJACENT FILINGS
- IP INLET PROTECTION
- OP OUTLET PROTECTION
- SF SILT FENCE
- PROPOSED CONTOURS
- EXISTING CONTOURS
- SLOPE DIRECTION
- DRAINAGE FLOW ARROW
- DRAINAGE SWALE
- CUT/FILL LINE
- PROPERTY BOUNDARY
- LIMITS TO CONSTRUCTION/DISTURBANCE
- A LOT DRAINS TO STREET
- B LOT DRAINS TO STREET/REAR OF LOT
- T LOT DRAINAGE VARIES
- G GARDEN LEVEL BASEMENT
- W WALK OUT BASEMENT

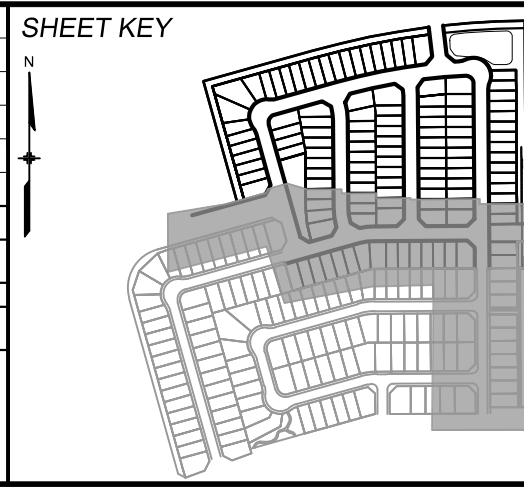
BMP SEQUENCING	
INITIAL	SILT FENCE, CONSTRUCTION FENCE, VEHICLE TRACKING, TEMP SEDIMENT BASINS, ROUGH CUT STREET CONTROL
INTERIM	FLOW LINE SEDIMENT CONTROL LOGS, SEDIMENT CONTROL LOGS, CHECK DAMS, INLET PROTECTION, STOCKPILES, STAGING
FINAL	EROSION CONTROL BLANKETS, SEEDING & MULCHING

PCD FILING NO.: SF-21-024



NOTE:  
1. RETAINING WALLS GREATER THAN 4' IN HEIGHT WILL REQUIRE PIKES PEAK REGIONAL BUILDING DEPARTMENT PERMIT AND ADDITIONAL STRUCTURAL DESIGN.  
2. MAX RETAINING WALL HEIGHT = 9'

REFERENCE DRAWINGS			
No.	DATE	DESCRIPTION	BY
COMPUTER FILE MANAGEMENT			
FILE NAME: S:\21.886.038 (Trails F6)\104 Plan Sets\Construction Plans\GEC Plan\GEC01.dwg			
CTB FILE: Matrix(black).ctb			
PLOT DATE: September 9, 2021 11:46:47 AM			
THIS DRAWING IS CURRENT AS OF PLOT DATE AND MAY BE SUBJECT TO CHANGE.			



**BENCHMARK**  
COLORADO SPRINGS UTILITIES (FIMS) MONUMENT F206  
A BERNTSEN TOP SECURITY MONUMENT SYSTEM WITH A 3.5-INCH DIAMETER ALUMINUM CAP IN A ROAD BOX, LOCATED ON THE NORTHWEST CORNER OF FONTAINE BOULEVARD AND POWERS BOULEVARD.  
ELEVATION - 5897.89' U.S. SURVEY FT

**BASIS OF BEARING**  
BEARINGS ARE BASED ON THE NORTH LINE OF THE NORTHWEST QUARTER OF SECTION 9, TOWNSHIP 15 SOUTH, RANGE 65 WEST OF THE 6TH P.M. SAID LINE BEARS S89°51'22"E FROM THE NORTHWEST CORNER OF SAID SECTION 9 (2 1/2' AULM. CAP PLS 17664) TO THE N 1/4 CORNER OF SAID SECTION 9 (3 1/4' AULM. CAP PLS 10377)



SEAL

**PRELIMINARY**  
THIS DRAWING HAS NOT BEEN APPROVED BY GOVERNING AGENCIES AND IS SUBJECT TO CHANGE

FOR AND ON BEHALF OF  
MATRIX DESIGN GROUP, INC.  
PROJECT No. 21.886.038

TRAILS AT ASPEN RIDGE			
FILING NO.4 GRADING & EROSION CONTROL PLANS			
GRADING & EROSION CONTROL PLAN			
DESIGNED BY:	BAS	SCALE	DATE ISSUED:
DRAWN BY:	BAS	HORIZ 1" = 50'	AUGUST 2021
CHECKED BY:	NMS	VERT. N/A	SHEET 5 OF 8
			DRAWING No. GEC02



## **SWMP Inspection & Maintenance Log**

# Stormwater Management Plan Inspection and Maintenance Log

## The Trails at Aspen Ridge Filing No. 4

### *Colorado Springs, CO*

(Record inspections, items found maintenance and corrective actions taken. Also, record any training received by Contractor personnel with regard to erosion control, materials handling and any inspections by outside agencies)

[illegible]

## **Soil Survey of El Paso County Area Soils Map**

# Custom Soil Resource Report Soil Map





# Custom Soil Resource Report

## MAP LEGEND

### Area of Interest (AOI)

 Area of Interest (AOI)


### Soils


 Soil Map Unit Polygons


 Soil Map Unit Lines


 Soil Map Unit Points

### Special Point Features

 Blowout

 Borrow Pit

 Clay Spot

 Closed Depression

 Gravel Pit

 Gravelly Spot

 Landfill

 Lava Flow

 Marsh or swamp

 Mine or Quarry

 Miscellaneous Water


 Perennial Water

 Rock Outcrop


 Saline Spot

 Sandy Spot

 Severely Eroded Spot


 Sinkhole


 Slide or Slip

 Sodic Spot

 Spoil Area

 Stony Spot


 Very Stony Spot

 Wet Spot

 Other

 Special Line Features

### Water Features

 Streams and Canals


### Transportation

 Rails


 Interstate Highways

 US Routes

 Major Roads

 Local Roads

### Background

 Aerial Photography

## MAP INFORMATION

The soil surveys that comprise your AOI were mapped at 1:24,000.

Warning: Soil Map may not be valid at this scale.

Enlargement of maps beyond the scale of mapping can cause misunderstanding of the detail of mapping and accuracy of soil line placement. The maps do not show the small areas of contrasting soils that could have been shown at a more detailed scale.

Please rely on the bar scale on each map sheet for map measurements.

Source of Map: Natural Resources Conservation Service  
Web Soil Survey URL:  
Coordinate System: Web Mercator (EPSG:3857)

Maps from the Web Soil Survey are based on the Web Mercator projection, which preserves direction and shape but distorts distance and area. A projection that preserves area, such as the Albers equal-area conic projection, should be used if more accurate calculations of distance or area are required.

This product is generated from the USDA-NRCS certified data as of the version date(s) listed below.

Soil Survey Area: El Paso County Area, Colorado  
Survey Area Data: Version 18, Jun 5, 2020

Soil map units are labeled (as space allows) for map scales 1:50,000 or larger.

Date(s) aerial images were photographed: Aug 14, 2018—Sep 23, 2018

The orthophoto or other base map on which the soil lines were compiled and digitized probably differs from the background imagery displayed on these maps. As a result, some minor shifting of map unit boundaries may be evident.

## Map Unit Legend

Map Unit Symbol	Map Unit Name	Acres in AOI	Percent of AOI
52	Manzanst clay loam, 0 to 3 percent slopes	0.1	0.4%
56	Nelson-Tassel fine sandy loams, 3 to 18 percent slopes	27.4	99.2%
86	Stoneham sandy loam, 3 to 8 percent slopes	0.1	0.4%
<b>Totals for Area of Interest</b>		<b>27.6</b>	<b>100.0%</b>

## Map Unit Descriptions

The map units delineated on the detailed soil maps in a soil survey represent the soils or miscellaneous areas in the survey area. The map unit descriptions, along with the maps, can be used to determine the composition and properties of a unit.

A map unit delineation on a soil map represents an area dominated by one or more major kinds of soil or miscellaneous areas. A map unit is identified and named according to the taxonomic classification of the dominant soils. Within a taxonomic class there are precisely defined limits for the properties of the soils. On the landscape, however, the soils are natural phenomena, and they have the characteristic variability of all natural phenomena. Thus, the range of some observed properties may extend beyond the limits defined for a taxonomic class. Areas of soils of a single taxonomic class rarely, if ever, can be mapped without including areas of other taxonomic classes. Consequently, every map unit is made up of the soils or miscellaneous areas for which it is named and some minor components that belong to taxonomic classes other than those of the major soils.

Most minor soils have properties similar to those of the dominant soil or soils in the map unit, and thus they do not affect use and management. These are called noncontrasting, or similar, components. They may or may not be mentioned in a particular map unit description. Other minor components, however, have properties and behavioral characteristics divergent enough to affect use or to require different management. These are called contrasting, or dissimilar, components. They generally are in small areas and could not be mapped separately because of the scale used. Some small areas of strongly contrasting soils or miscellaneous areas are identified by a special symbol on the maps. If included in the database for a given area, the contrasting minor components are identified in the map unit descriptions along with some characteristics of each. A few areas of minor components may not have been observed, and consequently they are not mentioned in the descriptions, especially where the pattern was so complex that it was impractical to make enough observations to identify all the soils and miscellaneous areas on the landscape.

The presence of minor components in a map unit in no way diminishes the usefulness or accuracy of the data. The objective of mapping is not to delineate pure taxonomic classes but rather to separate the landscape into landforms or

landform segments that have similar use and management requirements. The delineation of such segments on the map provides sufficient information for the development of resource plans. If intensive use of small areas is planned, however, onsite investigation is needed to define and locate the soils and miscellaneous areas.

An identifying symbol precedes the map unit name in the map unit descriptions. Each description includes general facts about the unit and gives important soil properties and qualities.

Soils that have profiles that are almost alike make up a *soil series*. Except for differences in texture of the surface layer, all the soils of a series have major horizons that are similar in composition, thickness, and arrangement.

Soils of one series can differ in texture of the surface layer, slope, stoniness, salinity, degree of erosion, and other characteristics that affect their use. On the basis of such differences, a soil series is divided into *soil phases*. Most of the areas shown on the detailed soil maps are phases of soil series. The name of a soil phase commonly indicates a feature that affects use or management. For example, Alpha silt loam, 0 to 2 percent slopes, is a phase of the Alpha series.

Some map units are made up of two or more major soils or miscellaneous areas. These map units are complexes, associations, or undifferentiated groups.

A *complex* consists of two or more soils or miscellaneous areas in such an intricate pattern or in such small areas that they cannot be shown separately on the maps. The pattern and proportion of the soils or miscellaneous areas are somewhat similar in all areas. Alpha-Beta complex, 0 to 6 percent slopes, is an example.

An *association* is made up of two or more geographically associated soils or miscellaneous areas that are shown as one unit on the maps. Because of present or anticipated uses of the map units in the survey area, it was not considered practical or necessary to map the soils or miscellaneous areas separately. The pattern and relative proportion of the soils or miscellaneous areas are somewhat similar. Alpha-Beta association, 0 to 2 percent slopes, is an example.

An *undifferentiated group* is made up of two or more soils or miscellaneous areas that could be mapped individually but are mapped as one unit because similar interpretations can be made for use and management. The pattern and proportion of the soils or miscellaneous areas in a mapped area are not uniform. An area can be made up of only one of the major soils or miscellaneous areas, or it can be made up of all of them. Alpha and Beta soils, 0 to 2 percent slopes, is an example.

Some surveys include *miscellaneous areas*. Such areas have little or no soil material and support little or no vegetation. Rock outcrop is an example.

## El Paso County Area, Colorado

### 52—Manzanst clay loam, 0 to 3 percent slopes

#### Map Unit Setting

*National map unit symbol:* 2w4nr

*Elevation:* 4,060 to 6,660 feet

*Mean annual precipitation:* 14 to 16 inches

*Mean annual air temperature:* 50 to 54 degrees F

*Frost-free period:* 130 to 170 days

*Farmland classification:* Prime farmland if irrigated

#### Map Unit Composition

*Manzanst and similar soils:* 85 percent

*Minor components:* 15 percent

*Estimates are based on observations, descriptions, and transects of the mapunit.*

#### Description of Manzanst

##### Setting

*Landform:* Terraces, drainageways

*Landform position (three-dimensional):* Tread

*Down-slope shape:* Linear

*Across-slope shape:* Linear, concave

*Parent material:* Clayey alluvium derived from shale

##### Typical profile

*A - 0 to 3 inches:* clay loam

*Bt - 3 to 12 inches:* clay

*Btk - 12 to 37 inches:* clay

*Bk1 - 37 to 52 inches:* clay

*Bk2 - 52 to 79 inches:* clay

##### Properties and qualities

*Slope:* 0 to 3 percent

*Depth to restrictive feature:* More than 80 inches

*Drainage class:* Well drained

*Capacity of the most limiting layer to transmit water (Ksat):* Moderately low to moderately high (0.06 to 0.20 in/hr)

*Depth to water table:* More than 80 inches

*Frequency of flooding:* None

*Frequency of ponding:* None

*Calcium carbonate, maximum content:* 15 percent

*Gypsum, maximum content:* 3 percent

*Maximum salinity:* Slightly saline (4.0 to 7.0 mmhos/cm)

*Sodium adsorption ratio, maximum:* 10.0

*Available water capacity:* High (about 9.0 inches)

##### Interpretive groups

*Land capability classification (irrigated):* 3e

*Land capability classification (nonirrigated):* 4c

*Hydrologic Soil Group:* C

*Ecological site:* R067BY037CO - Saline Overflow

*Hydric soil rating:* No

## Minor Components

### Ritoazul

*Percent of map unit:* 7 percent  
*Landform:* Interfluves, drainageways  
*Landform position (three-dimensional):* Rise  
*Down-slope shape:* Linear  
*Across-slope shape:* Linear  
*Ecological site:* R067BY042CO - Clayey Plains  
*Hydric soil rating:* No

### Arvada

*Percent of map unit:* 6 percent  
*Landform:* Drainageways, interfluves  
*Down-slope shape:* Linear  
*Across-slope shape:* Linear  
*Ecological site:* R067BY033CO - Salt Flat  
*Hydric soil rating:* No

### Wiley

*Percent of map unit:* 2 percent  
*Landform:* Interfluves  
*Down-slope shape:* Linear  
*Across-slope shape:* Linear  
*Ecological site:* R067BY002CO - Loamy Plains  
*Hydric soil rating:* No

## 56—Nelson-Tassel fine sandy loams, 3 to 18 percent slopes

### Map Unit Setting

*National map unit symbol:* 3690  
*Elevation:* 5,600 to 6,400 feet  
*Mean annual precipitation:* 12 to 14 inches  
*Mean annual air temperature:* 48 to 52 degrees F  
*Frost-free period:* 135 to 155 days  
*Farmland classification:* Not prime farmland

### Map Unit Composition

*Nelson and similar soils:* 55 percent  
*Tassel and similar soils:* 40 percent  
*Minor components:* 5 percent  
*Estimates are based on observations, descriptions, and transects of the mapunit.*

### Description of Nelson

#### Setting

*Landform:* Hills  
*Landform position (three-dimensional):* Crest, side slope  
*Down-slope shape:* Linear  
*Across-slope shape:* Linear

## Custom Soil Resource Report

*Parent material:* Calcareous residuum weathered from interbedded sedimentary rock

### Typical profile

*A - 0 to 5 inches:* fine sandy loam  
*Ck - 5 to 23 inches:* fine sandy loam  
*Cr - 23 to 27 inches:* weathered bedrock

### Properties and qualities

*Slope:* 3 to 12 percent  
*Depth to restrictive feature:* 20 to 40 inches to paralithic bedrock  
*Drainage class:* Well drained  
*Runoff class:* Medium  
*Capacity of the most limiting layer to transmit water (Ksat):* Moderately low to high (0.06 to 2.00 in/hr)  
*Depth to water table:* More than 80 inches  
*Frequency of flooding:* None  
*Frequency of ponding:* None  
*Calcium carbonate, maximum content:* 10 percent  
*Maximum salinity:* Nonsaline to very slightly saline (0.0 to 2.0 mmhos/cm)  
*Available water capacity:* Very low (about 2.8 inches)

### Interpretive groups

*Land capability classification (irrigated):* 4e  
*Land capability classification (nonirrigated):* 6e  
*Hydrologic Soil Group:* B  
*Ecological site:* R067BY045CO - Shaly Plains  
*Other vegetative classification:* SHALY PLAINS (069AY046CO)  
*Hydric soil rating:* No

## Description of Tassel

### Setting

*Landform:* Hills  
*Landform position (three-dimensional):* Crest, side slope  
*Down-slope shape:* Linear  
*Across-slope shape:* Linear  
*Parent material:* Calcareous slope alluvium over residuum weathered from sandstone

### Typical profile

*A - 0 to 4 inches:* fine sandy loam  
*C - 4 to 10 inches:* fine sandy loam  
*Cr - 10 to 14 inches:* weathered bedrock

### Properties and qualities

*Slope:* 3 to 18 percent  
*Depth to restrictive feature:* 6 to 20 inches to paralithic bedrock  
*Drainage class:* Well drained  
*Runoff class:* Medium  
*Capacity of the most limiting layer to transmit water (Ksat):* Moderately high (0.20 to 0.60 in/hr)  
*Depth to water table:* More than 80 inches  
*Frequency of flooding:* None  
*Frequency of ponding:* None  
*Calcium carbonate, maximum content:* 10 percent  
*Available water capacity:* Very low (about 1.2 inches)

**Interpretive groups**

*Land capability classification (irrigated):* None specified  
*Land capability classification (nonirrigated):* 6s  
*Hydrologic Soil Group:* D  
*Ecological site:* R067BY045CO - Shaly Plains  
*Other vegetative classification:* SHALY PLAINS (069AY046CO)  
*Hydric soil rating:* No

**Minor Components**

**Other soils**

*Percent of map unit:* 4 percent  
*Hydric soil rating:* No

**Pleasant**

*Percent of map unit:* 1 percent  
*Landform:* Depressions  
*Hydric soil rating:* Yes

**86—Stoneham sandy loam, 3 to 8 percent slopes**

**Map Unit Setting**

*National map unit symbol:* 36b2  
*Elevation:* 5,100 to 6,500 feet  
*Mean annual precipitation:* 13 to 15 inches  
*Mean annual air temperature:* 48 to 52 degrees F  
*Frost-free period:* 135 to 155 days  
*Farmland classification:* Not prime farmland

**Map Unit Composition**

*Stoneham and similar soils:* 95 percent  
*Minor components:* 5 percent  
*Estimates are based on observations, descriptions, and transects of the mapunit.*

**Description of Stoneham**

**Setting**

*Landform:* Hills  
*Landform position (three-dimensional):* Side slope  
*Down-slope shape:* Linear  
*Across-slope shape:* Linear  
*Parent material:* Calcareous loamy alluvium

**Typical profile**

*A - 0 to 4 inches:* sandy loam  
*Bt - 4 to 8 inches:* sandy clay loam  
*Btk - 8 to 11 inches:* sandy clay loam  
*Ck - 11 to 60 inches:* loam

## Custom Soil Resource Report

### Properties and qualities

*Slope:* 3 to 8 percent

*Depth to restrictive feature:* More than 80 inches

*Drainage class:* Well drained

*Runoff class:* Medium

*Capacity of the most limiting layer to transmit water (Ksat):* Moderately high to high  
(0.60 to 2.00 in/hr)

*Depth to water table:* More than 80 inches

*Frequency of flooding:* None

*Frequency of ponding:* None

*Calcium carbonate, maximum content:* 15 percent

*Maximum salinity:* Nonsaline to very slightly saline (0.0 to 2.0 mmhos/cm)

*Available water capacity:* High (about 9.5 inches)

### Interpretive groups

*Land capability classification (irrigated):* 3e

*Land capability classification (nonirrigated):* 4e

*Hydrologic Soil Group:* B

*Ecological site:* R067BY024CO - Sandy Plains

*Other vegetative classification:* SANDY PLAINS (069AY026CO)

*Hydric soil rating:* No

### Minor Components

#### Other soils

*Percent of map unit:* 4 percent

*Hydric soil rating:* No

#### Pleasant

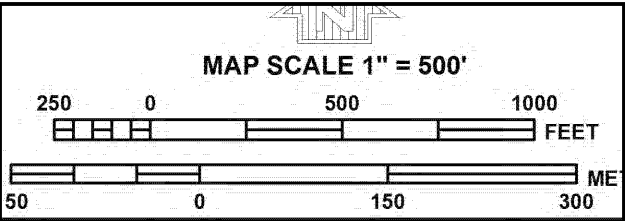
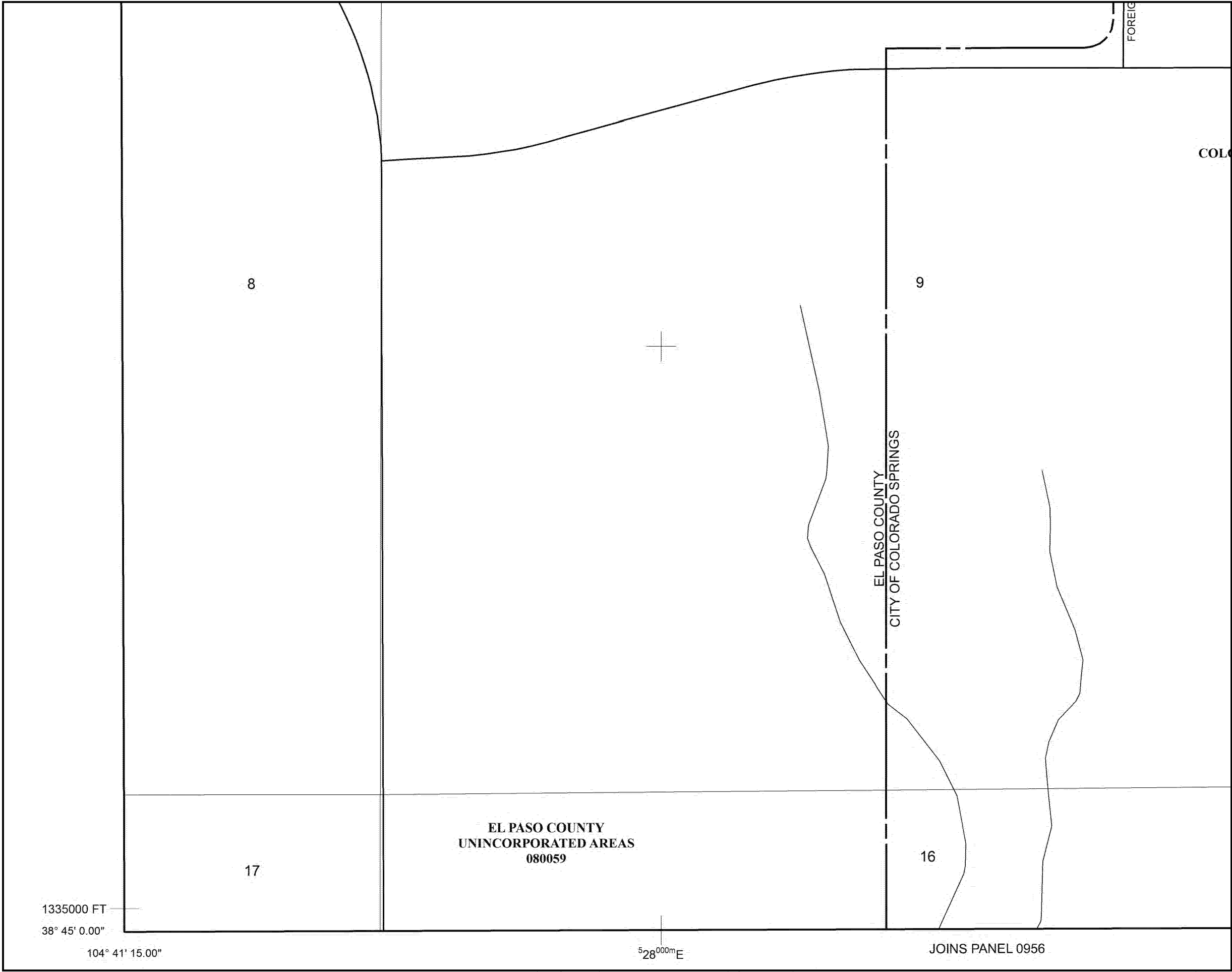
*Percent of map unit:* 1 percent

*Landform:* Depressions

*Hydric soil rating:* Yes



## **FEMA FIRM Floodplain Maps**



PANEL 0768G

**FIRM**  
FLOOD INSURANCE RATE MAP  
EL PASO COUNTY,  
COLORADO  
AND INCORPORATED AREAS  
  
PANEL 768 OF 1300  
(SEE MAP INDEX FOR FIRM PANEL LAYOUT)  
CONTAINS  

COMMUNITY	NUMBER	PANEL	SUFFIX
COLORADO SPRINGS, CITY OF	080060	0768	G
EL PASO COUNTY	080059	0768	G

  
Notice to User: The Map Number shown below should be used when placing map orders; the Community Number shown above should be used on insurance applications for the subject community.  
**MAP NUMBER**  
08041C0768G  
**MAP REVISED**  
DECEMBER 7, 2018  
Federal Emergency Management Agency

This is an official copy of a portion of the above referenced flood map. It was extracted using F-MIT On-Line. This map does not reflect changes or amendments which may have been made subsequent to the date on the title block. For the latest product information about National Flood Insurance Program flood maps check the FEMA Flood Map Store at [www.msc.fema.gov](http://www.msc.fema.gov)

## **CDPHE General Permit**

# STATE OF COLORADO

Dedicated to protecting and improving the health and environment of the people of Colorado

4300 Cherry Creek Dr. S.  
Denver, Colorado 80246-1530  
Phone (303) 692-2000  
TDD Line (303) 691-7700  
Located in Glendale, Colorado  
<http://www.cdph.state.co.us>



Colorado Department  
of Public Health  
and Environment

For Agency Use Only

Permit Number Assigned

COR03- \_\_\_\_\_

Date Received \_\_\_\_/\_\_\_\_/\_\_\_\_  
Month Day Year

## COLORADO DISCHARGE PERMIT SYSTEM (CDPS) STORMWATER DISCHARGE ASSOCIATED WITH CONSTRUCTION ACTIVITIES APPLICATION **PHOTO COPIES, FAXED COPIES, PDF COPIES OR EMAILS WILL NOT BE ACCEPTED.**

**Please print or type. Original signatures are required.** All items must be completed accurately and in their entirety for the application to be deemed complete. Incomplete applications will not be processed until all information is received which will ultimately delay the issuance of a permit. If more space is required to answer any question, please attach additional sheets to the application form. Applications must be submitted by mail or hand delivered to:

**Colorado Department of Public Health and Environment  
Water Quality Control Division  
4300 Cherry Creek Drive South  
WQCD-P-B2  
Denver, Colorado 80246-1530**

Any additional information that you would like the Division to consider in developing the permit should be provided with the application. Examples include effluent data and/or modeling and planned pollutant removal strategies.

### PERMIT INFORMATION

Reason for Application: ☐ NEW CERT  
☐ RENEW CERT      EXISTING CERT # \_\_\_\_\_

Applicant is: ☐ Property Owner ☐ Contractor/Operator

### A. CONTACT INFORMATION - NOT ALL CONTACT TYPES MAY APPLY \* indicates required

**\*PERMITTEE (If more than one please add additional pages)**

**\*ORGANIZATION FORMAL NAME:** \_\_\_\_\_

**1) \*PERMITTEE** the person **authorized to sign and certify** the permit application. This person receives all permit correspondences and is **legally responsible** for compliance with the permit.

Responsible Position (Title): \_\_\_\_\_

Currently Held By (Person): \_\_\_\_\_

Telephone No: \_\_\_\_\_

email address \_\_\_\_\_

Organization: \_\_\_\_\_

Mailing Address: \_\_\_\_\_

City: \_\_\_\_\_ State: \_\_\_\_\_ Zip: \_\_\_\_\_

**This form must be signed by the Permittee (listed in item 1) to be considered complete.**

**Per Regulation 61** In all cases, it shall be signed as follows:

- In the case of corporations, by a responsible corporate officer. For the purposes of this section, the responsible corporate officer is responsible for the overall operation of the facility from which the discharge described in the application originates.
- In the case of a partnership, by a general partner.
- In the case of a sole proprietorship, by the proprietor.
- In the case of a municipal, state, or other public facility, by either a principal executive officer or ranking elected official

- 2) **DMR COGNIZANT OFFICIAL (i.e. authorized agent)** the person or position authorized to **sign and certify reports required by the Division** including Discharge Monitoring Reports \*DMR's, Annual Reports, Compliance Schedule submittals, and other information requested by the Division. The Division will transmit pre-printed reports (ie. DMR's) to this person. If more than one, please add additional pages. Same As 1) Permittee ☐

Responsible Position (Title): \_\_\_\_\_

Currently Held By (Person): \_\_\_\_\_

Telephone No: \_\_\_\_\_

email address \_\_\_\_\_

Organization: \_\_\_\_\_

Mailing Address: \_\_\_\_\_

City: \_\_\_\_\_ State: \_\_\_\_\_ Zip: \_\_\_\_\_

**Per Regulation 61** : All reports required by permits, and other information requested by the Division shall be signed by the permittee or by a duly authorized representative of that person. A person is a duly authorized representative only if:

- (i) The authorization is made in writing by the permittee
- (ii) The authorization specifies either an individual or a position having responsibility for the overall operation of the regulated facility or activity such as the position of plant manager, operator of a well or a well field, superintendent, position of equivalent responsibility, or an individual or position having overall responsibility for environmental matters for the company. (A duly authorized representative may thus be either a **named individual** or any individual occupying a **named position**); and
- (iii) The written authorization is submitted to the Division

- 3) **\*SITE CONTACT** local contact for questions relating to the facility & discharge authorized by this permit for the facility.

☐ Same As 1) Permittee

Responsible Position (Title): \_\_\_\_\_

Currently Held By (Person): \_\_\_\_\_

Telephone No: \_\_\_\_\_

email address \_\_\_\_\_

Organization: \_\_\_\_\_

Mailing Address: \_\_\_\_\_

City: \_\_\_\_\_ State: \_\_\_\_\_ Zip: \_\_\_\_\_

- 4) **\* BILLING CONTACT** if different than the permittee

Responsible Position (Title): \_\_\_\_\_

Currently Held By (Person): \_\_\_\_\_

Telephone No: \_\_\_\_\_

email address \_\_\_\_\_

Organization: \_\_\_\_\_

Mailing Address: \_\_\_\_\_

City: \_\_\_\_\_ State: \_\_\_\_\_ Zip: \_\_\_\_\_

5) OTHER CONTACT TYPES (check below) Add pages if necessary:

Responsible Position (Title): \_\_\_\_\_

Currently Held By (Person): \_\_\_\_\_

Telephone No: \_\_\_\_\_

email address \_\_\_\_\_

Organization: \_\_\_\_\_

Mailing Address: \_\_\_\_\_

City: \_\_\_\_\_ State: \_\_\_\_\_ Zip: \_\_\_\_\_

- |   |  |   |
|---|--|---|
| <input type="radio"/> Pretreatment Coordinator    | <input type="checkbox"/> Inspection Facility Contact | <input type="checkbox"/> Stormwater MS4 Responsible Person    |
| <input type="radio"/> Environmental Contact       | <input type="checkbox"/> Consultant                  | <input type="checkbox"/> Stormwater Authorized Representative |
| <input type="radio"/> Biosolids Responsible Party | <input type="checkbox"/> Compliance Contact          | <input type="checkbox"/> Other _____                          |
| <input type="radio"/> Property Owner              |  |   |

**B. Permitted Project/Facility Information**

Project/Facility Name \_\_\_\_\_

Street Address or cross streets \_\_\_\_\_

(e.g., "S. of Park St. between 5<sup>th</sup> Ave. and 10<sup>th</sup> Ave.", or "W. side of C.R. 21, 3.25 miles N. of Hwy 10"; A street name without an address, intersection, mile marker, or other identifying information describing the location of the project is not adequate. For **linear projects**, the route of the project should be described as best as possible with the location more accurately indicated by a map.)

City, \_\_\_\_\_ Zip Code \_\_\_\_\_ County \_\_\_\_\_

**Facility Latitude/Longitude—** (approximate center of site to nearest 15 seconds using one of following formats

001A Latitude \_\_\_\_\_ Longitude \_\_\_\_\_ (e.g., 39.703°, 104.933°)  
degrees (to 3 decimal places) degrees (to 3 decimal places)

or

001A Latitude \_\_\_\_\_° \_\_\_\_\_' \_\_\_\_\_" Longitude \_\_\_\_\_° \_\_\_\_\_' \_\_\_\_\_" (e.g., 39°46'11"N, 104°53'11"W)  
degrees minutes seconds degrees minutes seconds

For the approximate center point of the property, to the nearest 15 seconds. The latitude and longitude must be provided as either degrees, minutes, and seconds, or in decimal degrees with three decimal places. This information may be obtained from a variety of sources, including:

- ☐ **Surveyors or engineers** for the project should have, or be able to calculate, this information.
- ☐ EPA maintains a **web-based siting tool** as part of their Toxic Release Inventory program that uses interactive maps and aerial photography to help users get latitude and longitude. The siting tool can be accessed at [www.epa.gov/tri/report/siting\\_tool/index.htm](http://www.epa.gov/tri/report/siting_tool/index.htm)
- ☐ **U.S. Geological Survey topographical map(s)**, available at area map stores.
- ☐ Using a **Global Positioning System (GPS) unit** to obtain a direct reading.

**Note:** the latitude/longitude required above is not the directional degrees, minutes, and seconds provided on a site legal description to define property boundaries.

**C. MAP (Attachment) If no map is submitted, the permit will not be issued.**

**Map:** Attach a map that indicates the site location and that CLEARLY shows the boundaries of the area that will be disturbed. Maps must be **no larger** than 11x17 inches.

**D. LEGAL DESCRIPTION**

**Legal description:** If subdivided, provide the legal description below, or indicate that it is not applicable (**do not** supply Township/Range/Section or metes and bounds description of site)

Subdivision(s): \_\_\_\_\_ Lot(s): \_\_\_\_\_ Block(s): \_\_\_\_\_

**OR**

- ☐ Not applicable (site has not been subdivided)

## E. AREA OF CONSTRUCTION SITE

---

Total area of project site (acres): \_\_\_\_\_ Area of project site to undergo disturbance (acres): \_\_\_\_\_

**Note:** aside from clearing, grading and excavation activities, disturbed areas also include areas receiving overburden (e.g., stockpiles), demolition areas, and areas with heavy equipment/vehicle traffic and storage that disturb existing vegetative cover

Total disturbed area of Larger Common Plan of Development or Sale, if applicable: \_\_\_\_\_  
(i.e., total, including all phases, filings, lots, and infrastructure not covered by this application)

Provide both the total area of the construction site, and the area that will undergo disturbance, in acres. **Note:** aside from clearing, grading and excavation activities, disturbed areas also include areas receiving overburden (e.g., stockpiles), demolition areas, and areas with heavy equipment/vehicle traffic and storage that disturb existing vegetative cover (see construction activity description under the APPLICABILITY section on page 1).

If the project is part of a **larger common plan of development or sale** (see the definition under the APPLICABILITY section on page 1), the disturbed area of the total plan must also be included.

## F. NATURE OF CONSTRUCTION ACTIVITY

---

Check the appropriate box(s) or provide a brief description that indicates the general nature of the construction activities. (The full description of activities must be included in the Stormwater Management Plan.)

- ☐ Single Family Residential Development
- ☐ Multi-Family Residential Development
- ☐ Commercial Development
- ☐ Oil and Gas Production and/or Exploration (including pad sites and associated infrastructure)
- ☐ Highway/Road Development (not including roadways associated with commercial or residential development)
- ☐ Other – Description: \_\_\_\_\_

## G. ANTICIPATED CONSTRUCTION SCHEDULE

---

Construction Start Date: \_\_\_\_\_ Final Stabilization Date: \_\_\_\_\_

- **Construction Start Date** - This is the day you expect to begin ground disturbing activities, including grubbing, stockpiling, excavating, demolition, and grading activities.
- **Final Stabilization Date** - in terms of permit coverage, this is when the site is finally stabilized. This means that all ground surface disturbing activities at the site have been completed, and all disturbed areas have been either built on, paved, or a uniform vegetative cover has been established with an individual plant density of at least 70 percent of pre-disturbance levels. **Permit coverage must be maintained until the site is finally stabilized. Even if you are only doing one part of the project, the estimated final stabilization date must be for the overall project.** If permit coverage is still required once your part is completed, the permit certification may be transferred or reassigned to a new responsible entity(s).

## H. RECEIVING WATERS (If discharge is to a ditch or storm sewer, include the name of the ultimate receiving waters)

---

Immediate Receiving Water(s): \_\_\_\_\_

Ultimate Receiving Water(s): \_\_\_\_\_

Identify the receiving water of the stormwater from your site. Receiving waters are any waters of the State of Colorado. This includes all water courses, even if they are usually dry. If stormwater from the construction site enters a ditch or storm sewer system, identify that system and indicate the ultimate receiving water for the ditch or storm sewer. **Note:** a stormwater discharge permit does not allow a discharge into a ditch or storm sewer system without the approval of the owner/operator of that system.

## I. REQUIRED SIGNATURES (Both parts i. and ii. must be signed)

**Signature of Applicant:** The applicant must be either the owner and/or operator of the construction site. Refer to Part B of the instructions for additional information.

The application must be signed by the applicant to be considered complete. In all cases, it shall be signed as follows: (Regulation 61.4 (1ei)

- a) In the case of corporations, by the responsible corporate officer is responsible for the overall operation of the facility from which the discharge described in the form originates
- b) In the case of a partnership, by a general partner.
- c) In the case of a sole proprietorship, by the proprietor.
- d) In the case of a municipal, state, or other public facility, by either a principal executive officer, ranking elected official, (a principal executive officer has responsibility for the overall operation of the facility from which the discharge originates).

**STOP!: A Stormwater Management Plan must be completed prior to signing the following certifications!**

### i. STORMWATER MANAGEMENT PLAN CERTIFICATION

"I certify under penalty of law that a complete Stormwater Management Plan, has been prepared for my activity. Based on my inquiry of the person or persons who manage the system, or those persons directly responsible for gathering the information, the Stormwater Management Plan is, to the best of my knowledge and belief, true, accurate, and complete. I am aware that there are significant penalties for falsely certifying the completion of said SWMP, including the possibility of fine and imprisonment for knowing violations."

XX

Signature of Legally Responsible Person or Authorized Agent (submission must include original signature)

Date Signed

Name (printed)

Title

### ii. SIGNATURE OF PERMIT LEGAL CONTACT

"I certify under penalty of law that this document and all attachments were prepared under my direction or supervision in accordance with a system designed to assure that qualified personnel properly gather and evaluate the information submitted. Based on my inquiry of the person or persons who manage the system, or those persons directly responsible for gathering the information, the information submitted is to the best of my knowledge and belief, true, accurate and complete. I am aware that there are significant penalties for submitting false information, including the possibility of fine and imprisonment for knowing violations."

"I understand that submittal of this application is for coverage under the State of Colorado General Permit for Stormwater Discharges Associated with Construction Activity **for the entirety of the construction site/project described and applied for, until such time as the application is amended or the certification is transferred, inactivated, or expired.**"

XX

Signature of Legally Responsible Person (submission must include original signature)

Date Signed

Name (printed)

Title

**DO NOT INCLUDE A COPY OF THE STORMWATER MANAGEMENT PLAN  
DO NOT INCLUDE PAYMENT – AN INVOICE WILL BE SENT AFTER THE CERTIFICATION IS ISSUED.**