



LSC TRANSPORTATION CONSULTANTS, INC.
545 East Pikes Peak Avenue, Suite 210
Colorado Springs, CO 80903
(719) 633-2868
FAX (719) 633-5430
E-mail: lsc@lsctrans.com
Website: <http://www.lsctrans.com>

River Bend Crossing
Traffic Impact and Access Analysis
PCD File No. P189, SP187, SF1844, & SF1843
(LSC #184140)
September 9, 2019

Traffic Engineer's Statement

This traffic report and supporting information were prepared under my responsible charge and they comport with the standard of care. So far as is consistent with the standard of care, said report was prepared in general conformance with the criteria established by the County for traffic reports.

Engineering Review

01/16/2020 8:53:43 AM

dsdrice

JeffRice@elpasoco.com

(719) 520-7877

EPC Planning & Community
Development Department

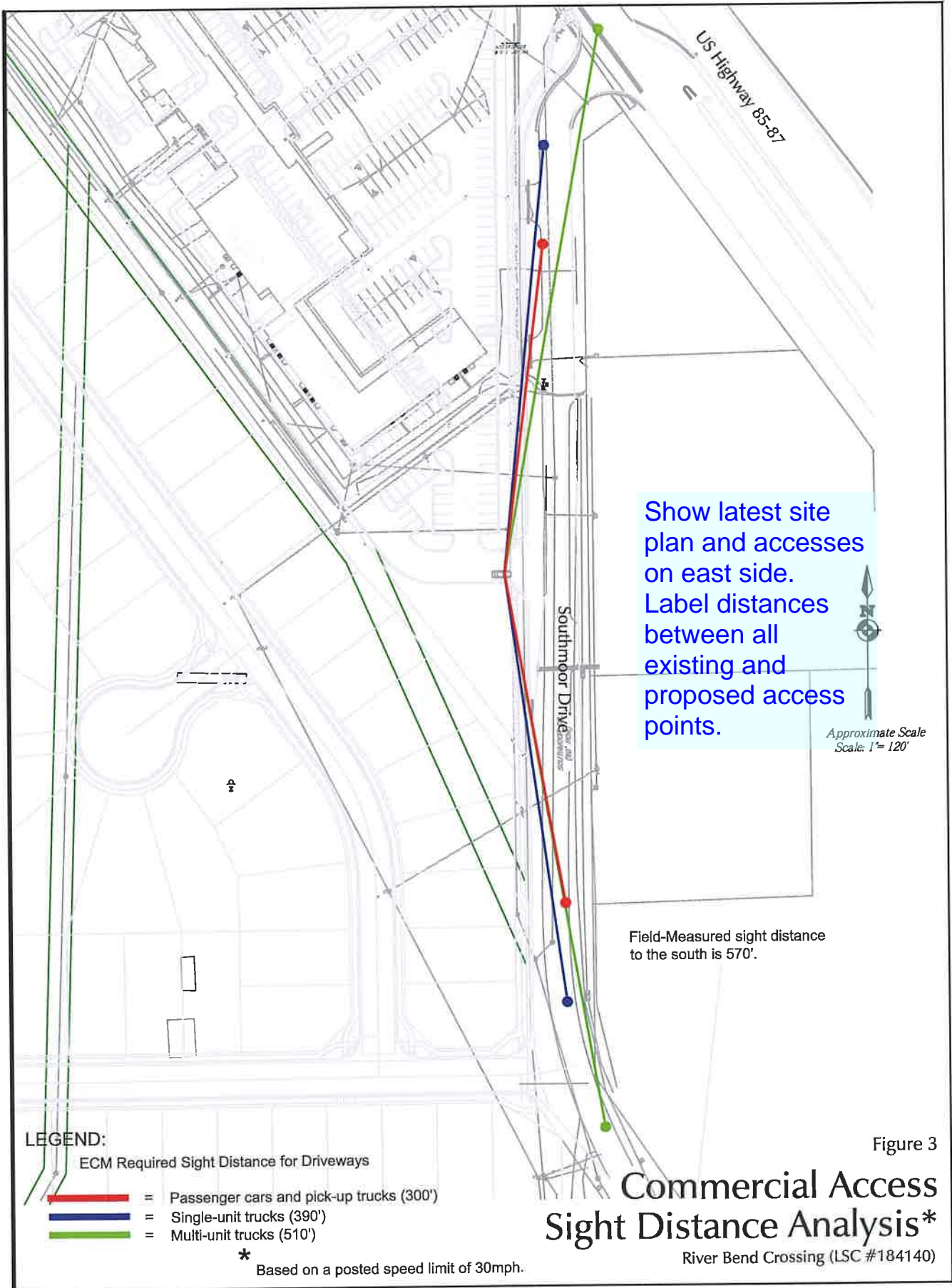


Developer's Statement

I, the Developer, have read and will comply with all commitments made on my behalf within this report.

Ah-Tell

9/11/19
Date

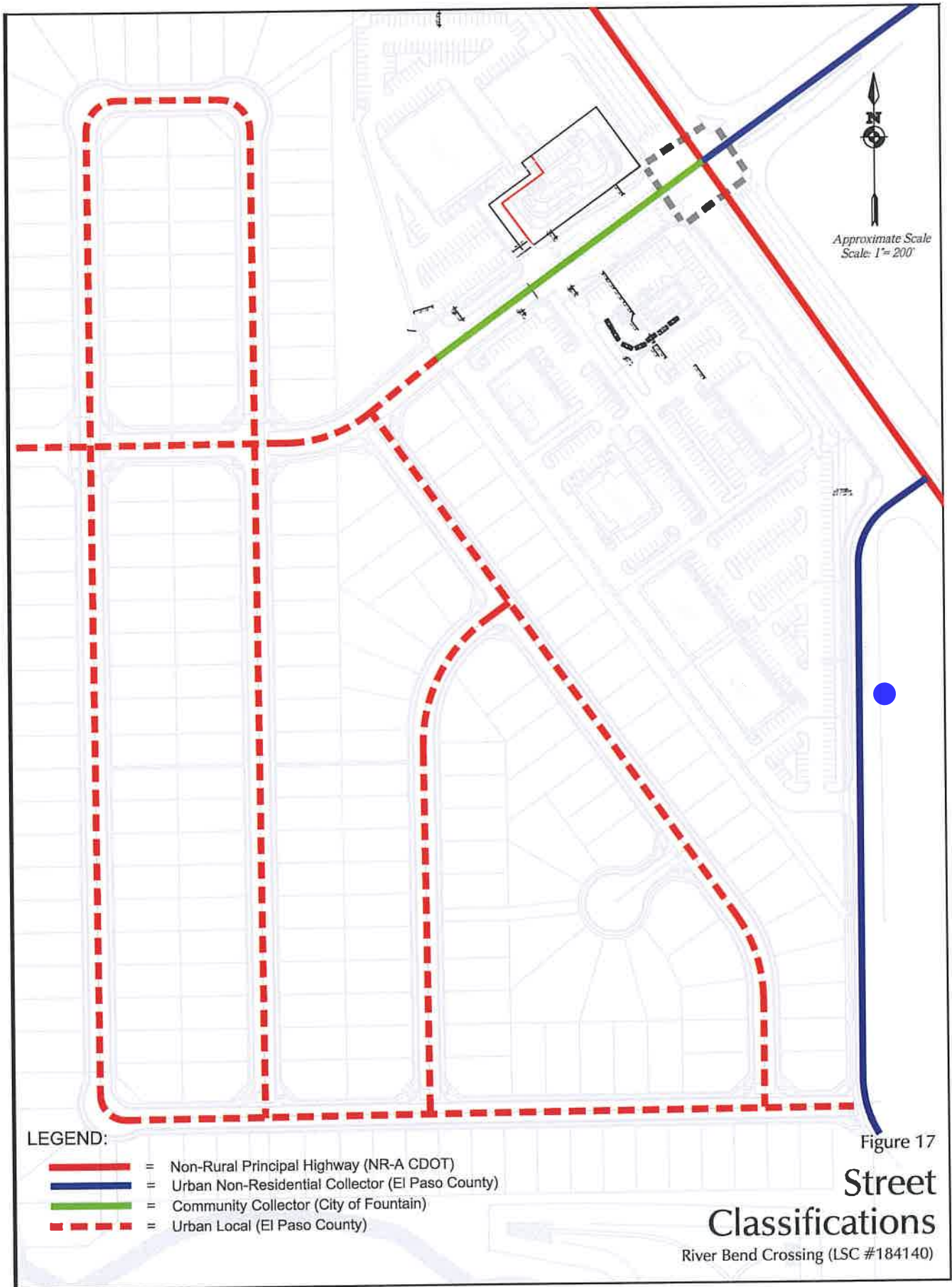


Show latest site plan and accesses on east side. Label distances between all existing and proposed access points.

Figure 3

Commercial Access Sight Distance Analysis*

River Bend Crossing (LSC #184140)



Provide proposed cross-sections for Southmoor Dr. - interim and ultimate.