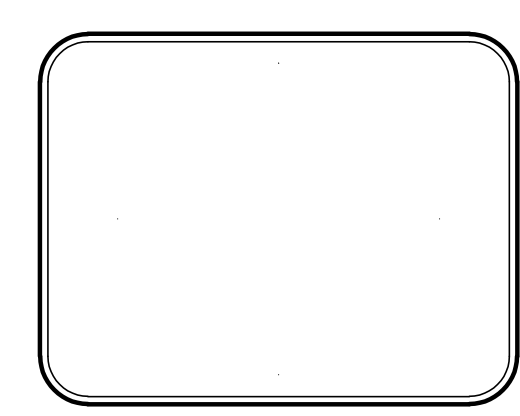
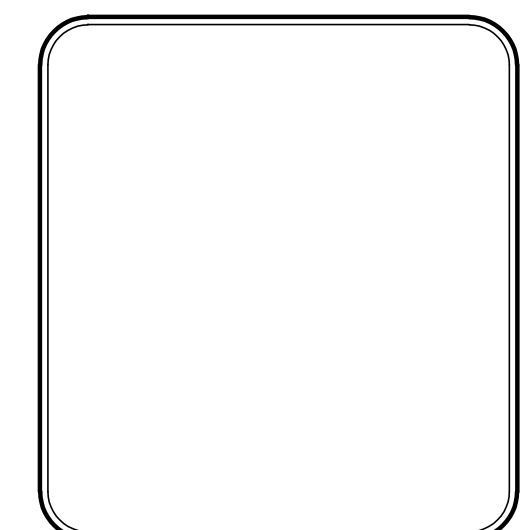


**HAMMERS CONSTRUCTION INC.**  
 COMMERCIAL GENERAL CONTRACTORS SPECIALIZING IN DESIGN/BUILD  
 PRESIDENT: STEVE R. HAMMERS  
 VICE PRES. DAVID J. HAMMERS  
 1411 WOOLSEY HEIGHTS  
 COLORADO SPRINGS, CO 80915  
 (719) 570-1589 FAX (719) 570-7008  
 www.hammersconstruction.com

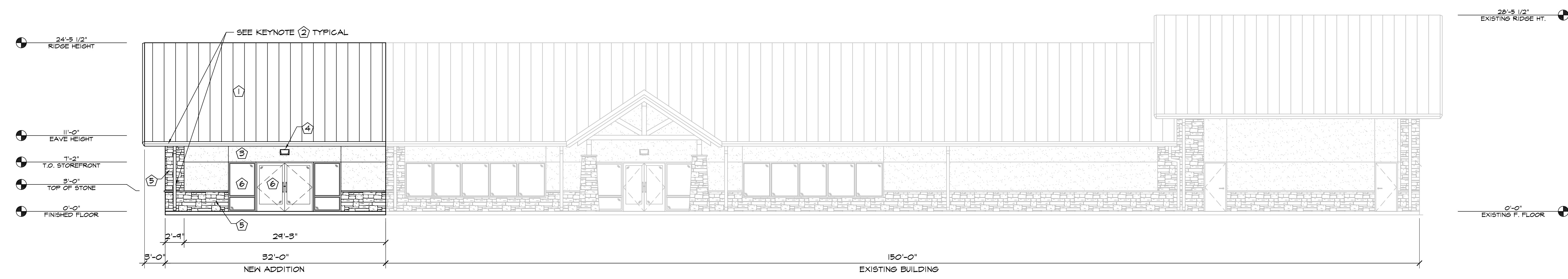
THIS DRAWING CONTAINS MATERIAL & INFORMATION WHICH MAY NOT BE REPRODUCED WITHOUT WRITTEN CONSENT OF HAMMERS CONSTRUCTION INC. THESE DRAWINGS ARE INTENDED TO BE USED ONLY BY HAMMERS CONSTRUCTION & ITS REPRESENTATIVES. THESE DRAWINGS HAVE NOT BEEN PREPARED FOR ANY OTHER PURPOSE THAN TO INDICATE THE GENERAL FEATURES AND PLACEMENT OF THE PROPOSED PROJECT. COPYRIGHT © 2026 HAMMERS CONSTRUCTION

**ROCKY MT. CYCLE PLAZA**  
 BUILDING ADDITION  
 847 STRUTHERS RANCH RD.  
 COLORADO SPRINGS, CO 80921  
 EL PASO COUNTY, COLORADO

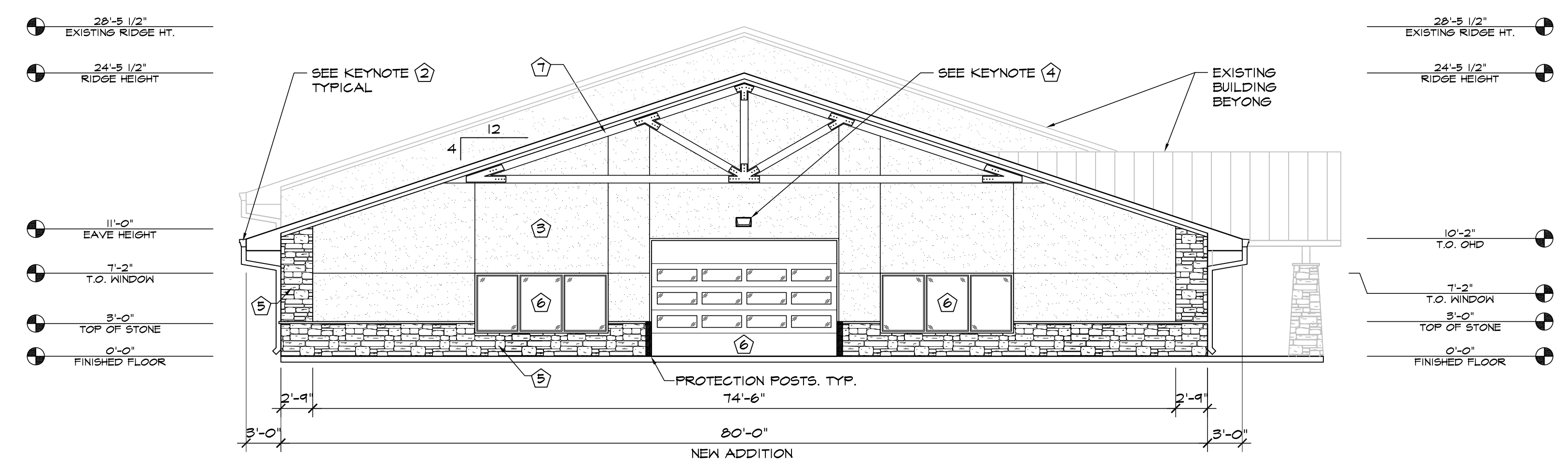


DATE: DEC. 29, 2025  
 DRAWN BY: W. VENEROS  
 PROJ. MGR: J. BUTLER  
 SCALE: SEE PLAN  
 APPROVED BY:  
 JOB NO: 1425

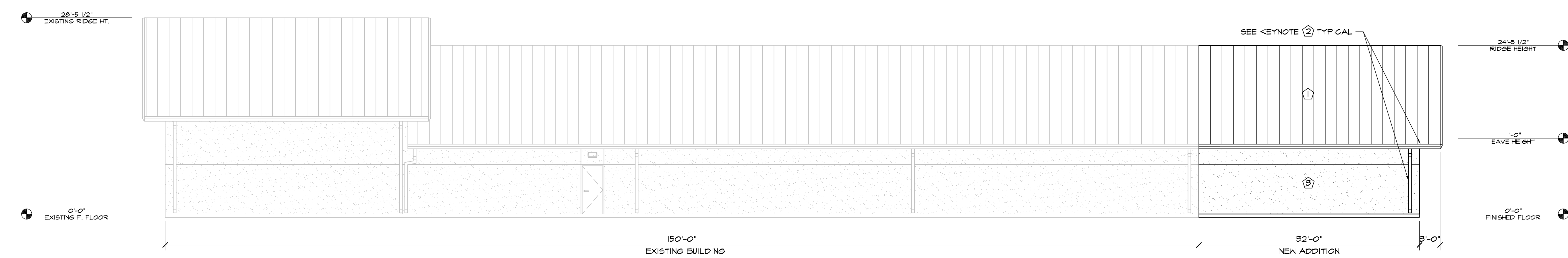
- △ RESUBMITTALS:
- △ 4-15-26/COMMENTS 2-4-26
- △
- △
- △
- △



**1 WEST ELEVATION**  
 SCALE: 1/8"=1'-0"



**2 NORTH ELEVATION**  
 SCALE: 1/8"=1'-0"



**3 EAST ELEVATION**  
 SCALE: 1/8"=1'-0"

ELEVATION KEY NOTES	
1	PREFINISHED STANDING SEAM ROOF BY METAL BUILDING PROVIDER
2	PREFINISHED GUTTER & DOWNSPOUTS BY METAL BUILDING PROVIDER
3	3/4" STUCCO FINISH SYS. W/ EXPANSION JOINT-120 SF MAX AREA
4	WALL PACK LIGHT TOP OF LIGHT @ 9'-0" A.F.F. U.N.O. SEE ELECT. PLANS
5	STONE VENEER W/ 2" CAP INSTALLED W/ SCHLUTER TRIM
6	SEE SCHEDULES ON "A" SHEETS FOR ALL DOOR INFORMATION
7	DECORATIVE TIMBER TRUSS, SEE SHEET S2.2 FOR FURTHER FRAMING DETAILS