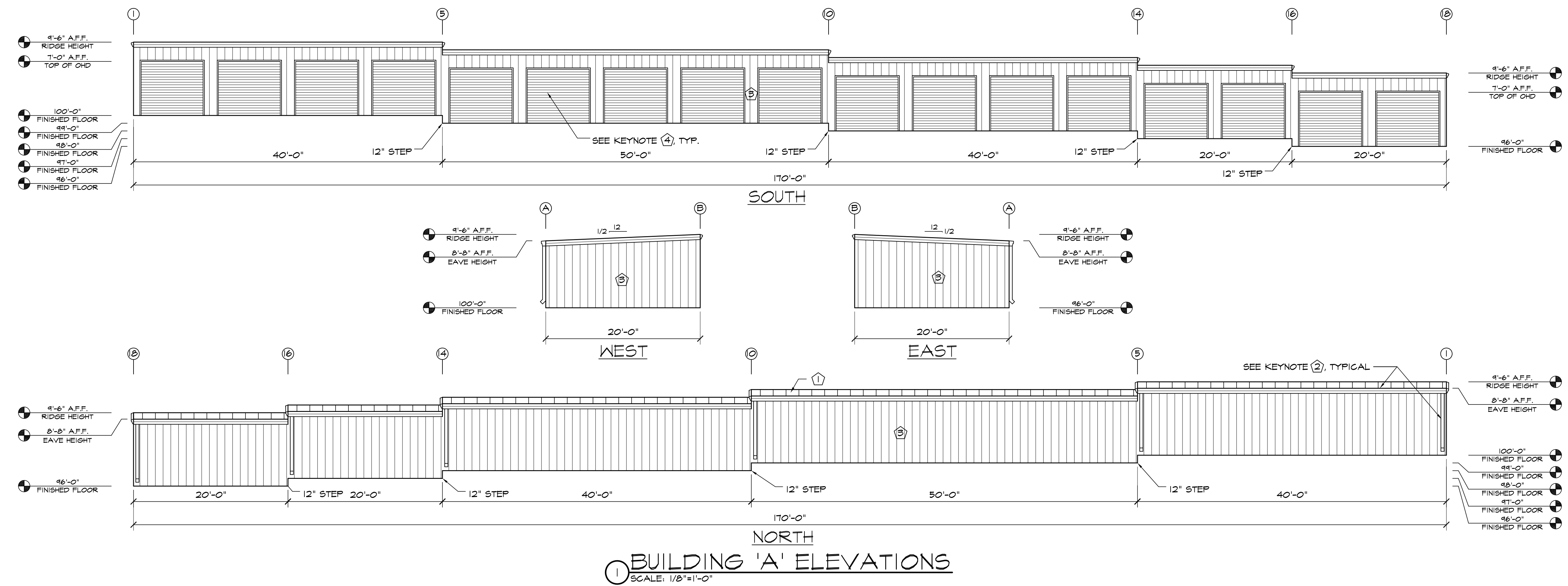
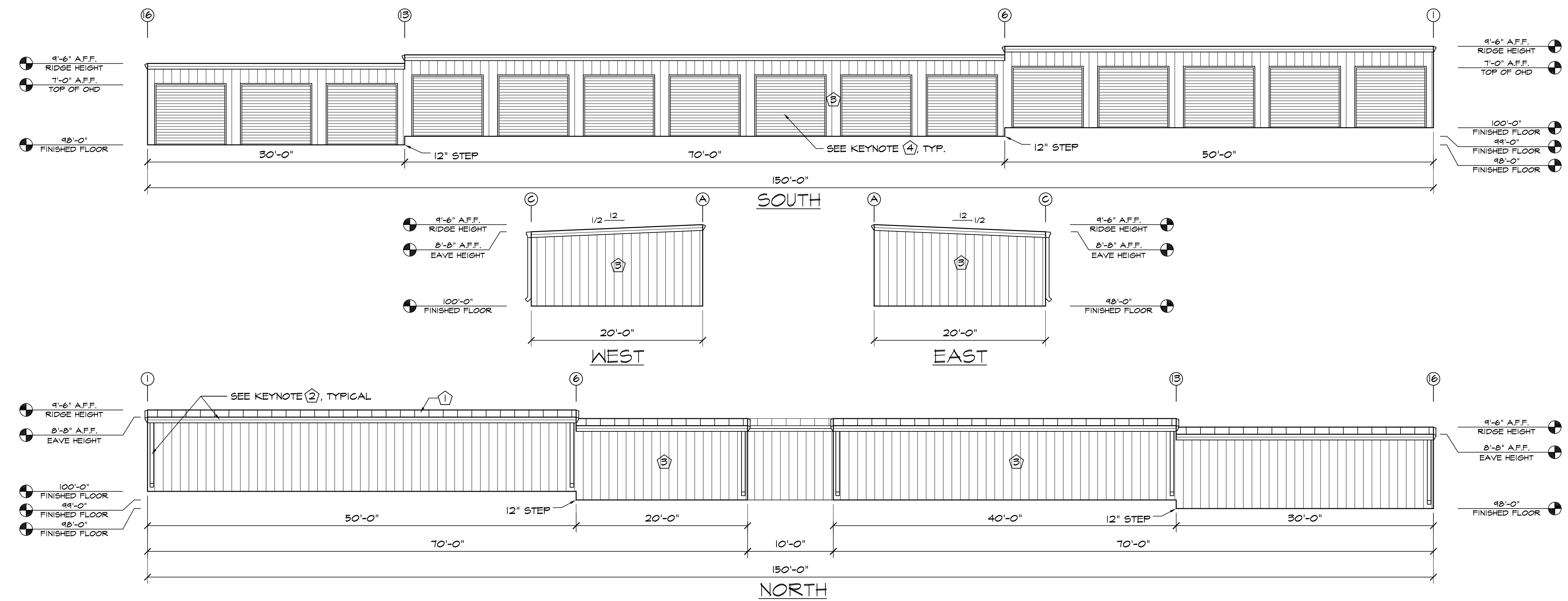


ELEVATION KEY NOTES	
①	PREFINISHED 24 GA. "PBR" METAL ROOF PANELS BY METAL BUILDING PROVIDER
②	PREFINISHED GUTTER & DOWNSPOUTS BY METAL BUILDING PROVIDER
③	PREFINISHED 26 GA. "PBR" METAL WALL PANELS BY METAL BUILDING PROVIDER
④	SEE SCHEDULES ON "A" SHEETS FOR ALL DOOR INFORMATION



① BUILDING 'A' ELEVATIONS
SCALE: 1/8"=1'-0"



② BUILDING 'B' ELEVATIONS
SCALE: 1/8"=1'-0"

HAMMERS CONSTRUCTION INC.
 COMMERCIAL GENERAL CONTRACTORS SPECIALIZING IN DESIGN/BUILD
 PRESIDENT: STEVE R. HAMMERS
 VICE PRES: DAVID J. HAMMERS
 1411 WOOLSEY HEIGHTS
 COLORADO SPRINGS, CO 80915
 (719) 570-1599 FAX (719) 570-7008
 www.hammersconstruction.com

THIS DRAWING CONTAINS MATERIAL & INFORMATION WHICH MAY NOT BE REPRODUCED WITHOUT WRITTEN CONSENT OF HAMMERS CONSTRUCTION INC. THESE DRAWINGS ARE INTENDED TO BE USED ONLY BY HAMMERS CONSTRUCTION & ITS REPRESENTATIVES. THESE DRAWINGS HAVE NOT BEEN PREPARED FOR ANY OTHER PURPOSE THAN TO INDICATE THE GENERAL FEATURES AND PLACEMENT OF THE PROPOSED PROJECT. COPYRIGHT © 2018 HAMMERS CONSTRUCTION

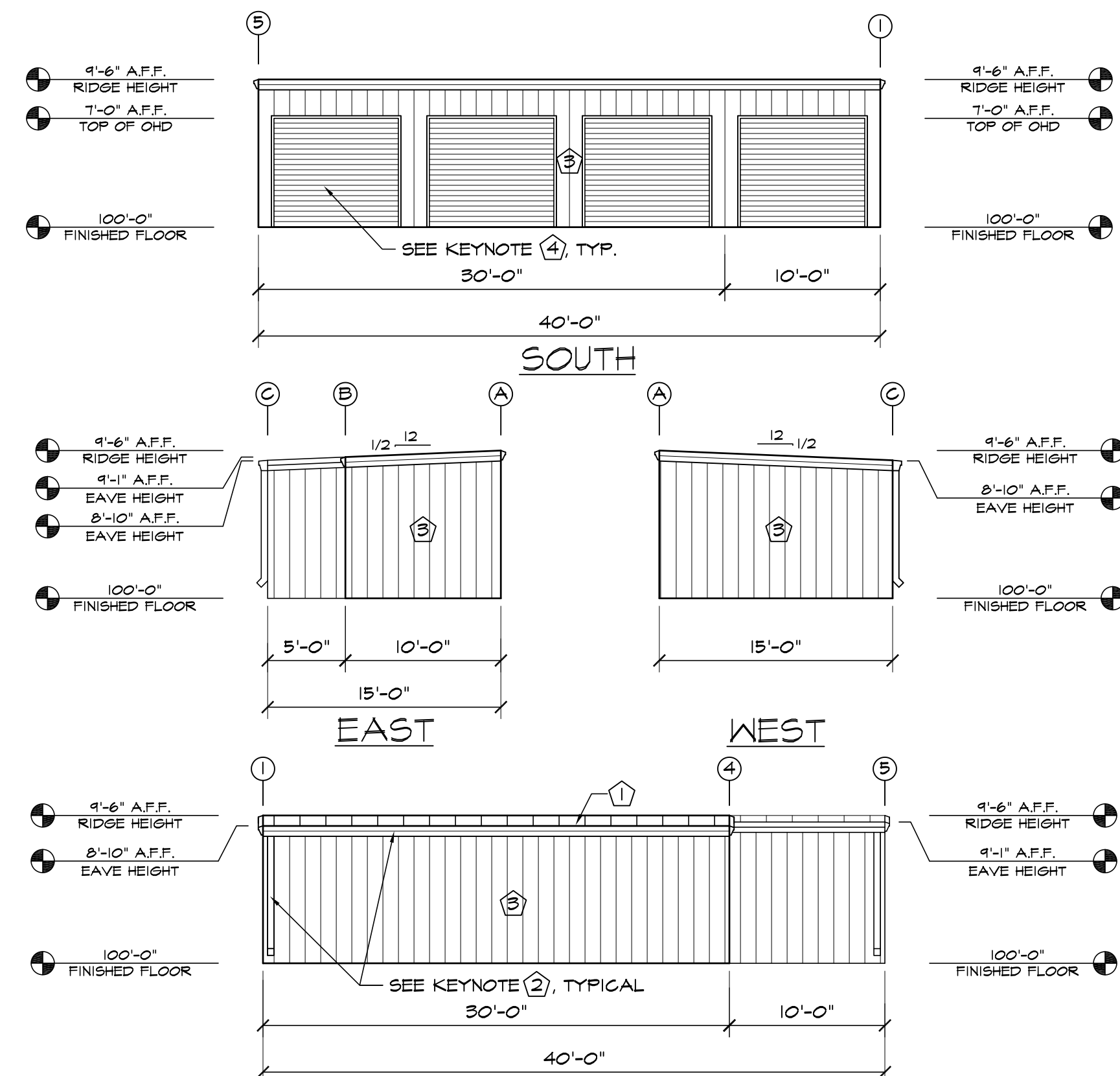
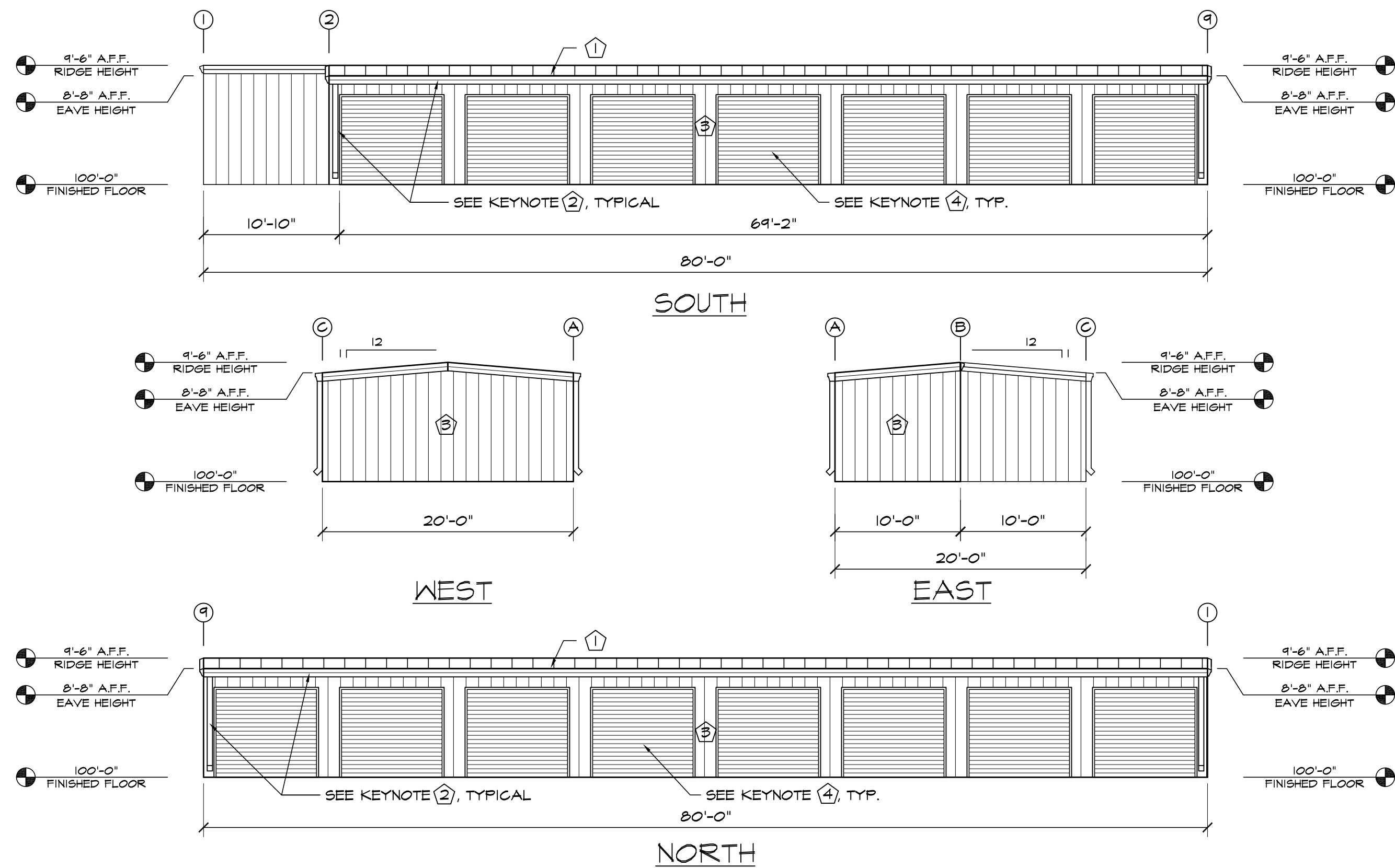
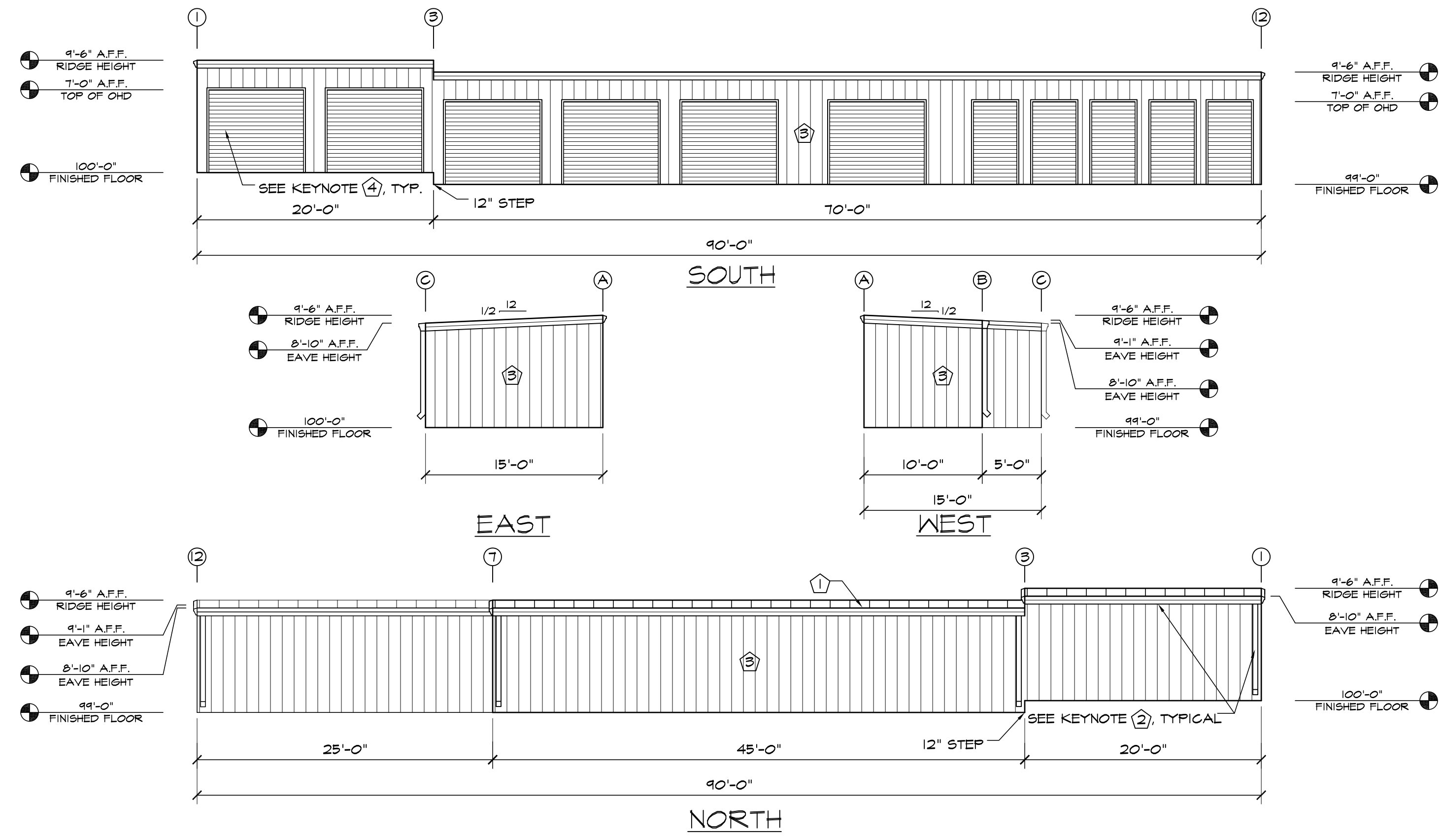
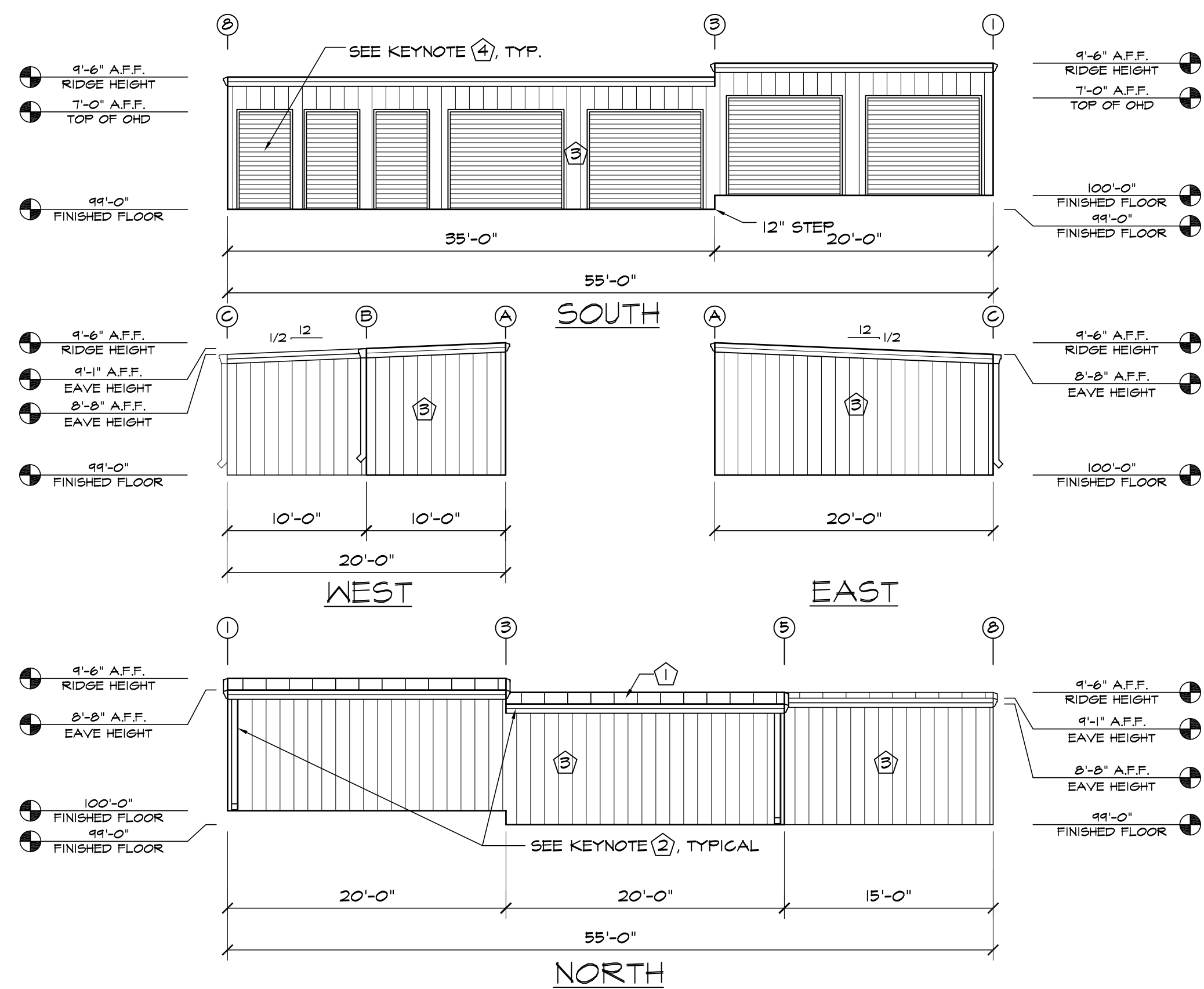
UTE PASS STORAGE FACILITY
 8775 N HIGHWAY 24
 CASCADE, CO 80804
 EL PASO COUNTY, COLORADO

DATE: MAY 21, 2018
 DRAWN BY: W. VENEROS
 PROJ. MGR: Y. DYACHENKO
 SCALE: SEE PLAN
 APPROVED BY:
 JOB NO: 1064

RESUBMITTALS:

6 of 7
 BUILDING ELEVATIONS

ELEVATION KEY NOTES	
①	PREFINISHED 24 GA. "PBR" METAL ROOF PANELS BY METAL BUILDING PROVIDER
②	PREFINISHED GUTTER & DOWNSPOUTS BY METAL BUILDING PROVIDER
③	PREFINISHED 26 GA. "PBR" METAL WALL PANELS BY METAL BUILDING PROVIDER
④	SEE SCHEDULES ON "A" SHEETS FOR ALL DOOR INFORMATION



HAMMERS CONSTRUCTION INC.
COMMERCIAL GENERAL CONTRACTORS SPECIALIZING IN DESIGN/BUILD
PRESIDENT: STEVE R. HAMMERS
VICE PRES: DAVID J. HAMMERS
1411 WOOLSEY HEIGHTS
COLORADO SPRINGS, CO 80915
(719) 570-1589 FAX (719) 570-7008
www.hammersconstruction.com

THIS DRAWING CONTAINS MATERIAL & INFORMATION WHICH MAY NOT BE REPRODUCED WITHOUT WRITTEN CONSENT OF HAMMERS CONSTRUCTION INC. THESE DRAWINGS ARE INTENDED TO BE USED ONLY BY HAMMERS CONSTRUCTION & ITS REPRESENTATIVES. THESE DRAWINGS HAVE NOT BEEN PREPARED FOR ANY OTHER PURPOSE THAN TO INDICATE THE GENERAL FEATURES AND PLACEMENT OF THE PROPOSED PROJECT. COPYRIGHT © 2018 HAMMERS CONSTRUCTION

UTE PASS STORAGE FACILITY
8775 N HIGHWAY 24
CASCADE, CO 80809
EL PASO COUNTY, COLORADO

DATE: MAY 21, 2018
DRAWN BY: W. VENEROS
PROJ. MGR: Y. DYACHENKO
SCALE: SEE PLAN
APPROVED BY:
JOB NO: 1064

RESUBMITTALS:

RESUBMITTALS:

RESUBMITTALS: