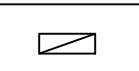
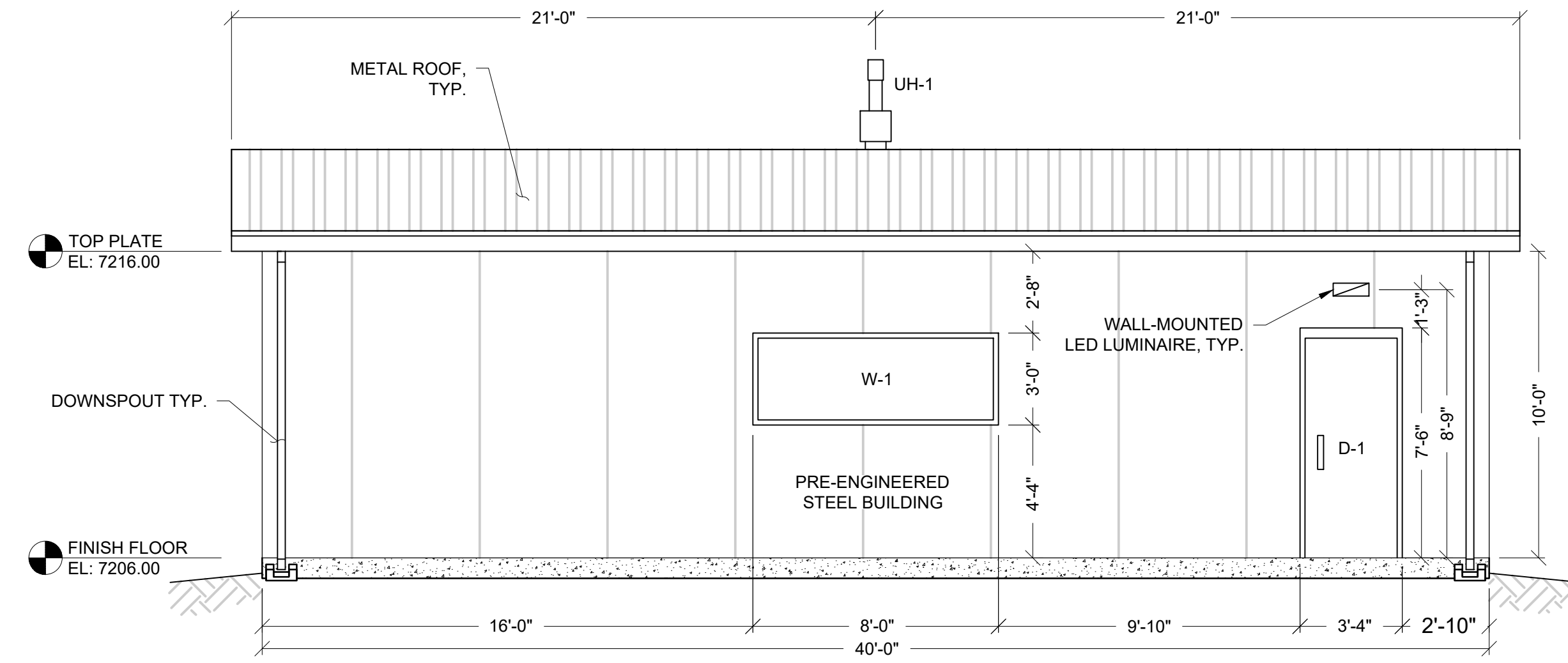
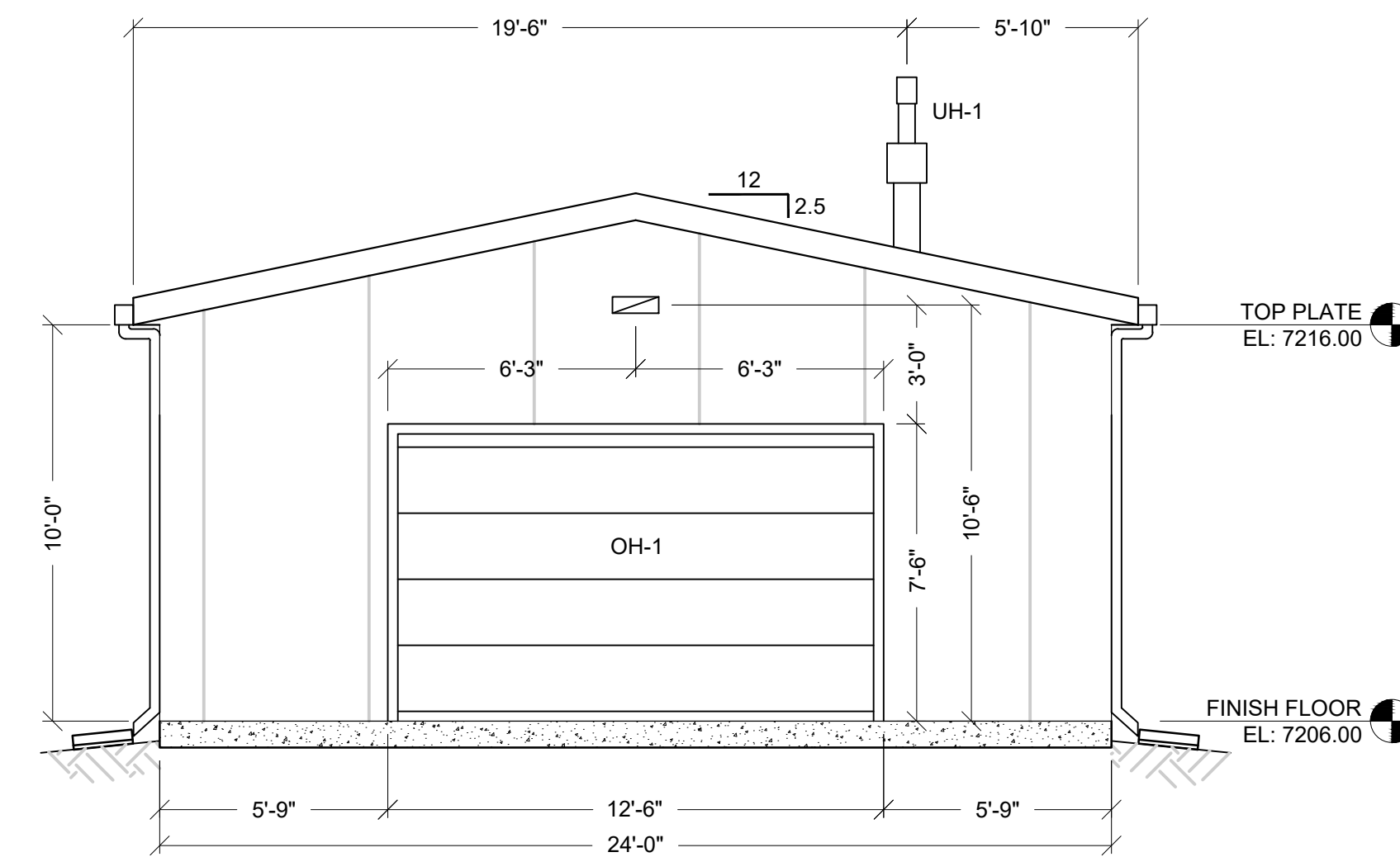


- NOTES:
1. ROOF SHALL BE INSTALLED PER MANUFACTURER'S RECOMMENDATIONS.
  2. PROFESSIONAL ENGINEER'S STAMP APPLIES ONLY TO THIS SHEET AND DOES NOT APPLY TO SUPERSTRUCTURE OR FOUNDATION DRAWINGS.
  3. BUILDING MANUFACTURER SHALL PROVIDE ALL SUPPORTS FOR MOUNTING, WALL PENETRATIONS, AND TRIM. MANUFACTURER SHALL ALSO PROVIDE ALL WALL PANELS, FRAMING, SUPPORTS, CONNECTIONS, AND BUILDING-RELATED ITEMS.
  4. REFER TO SHEET A2 FOR DOOR AND HARDWARE SCHEDULE.

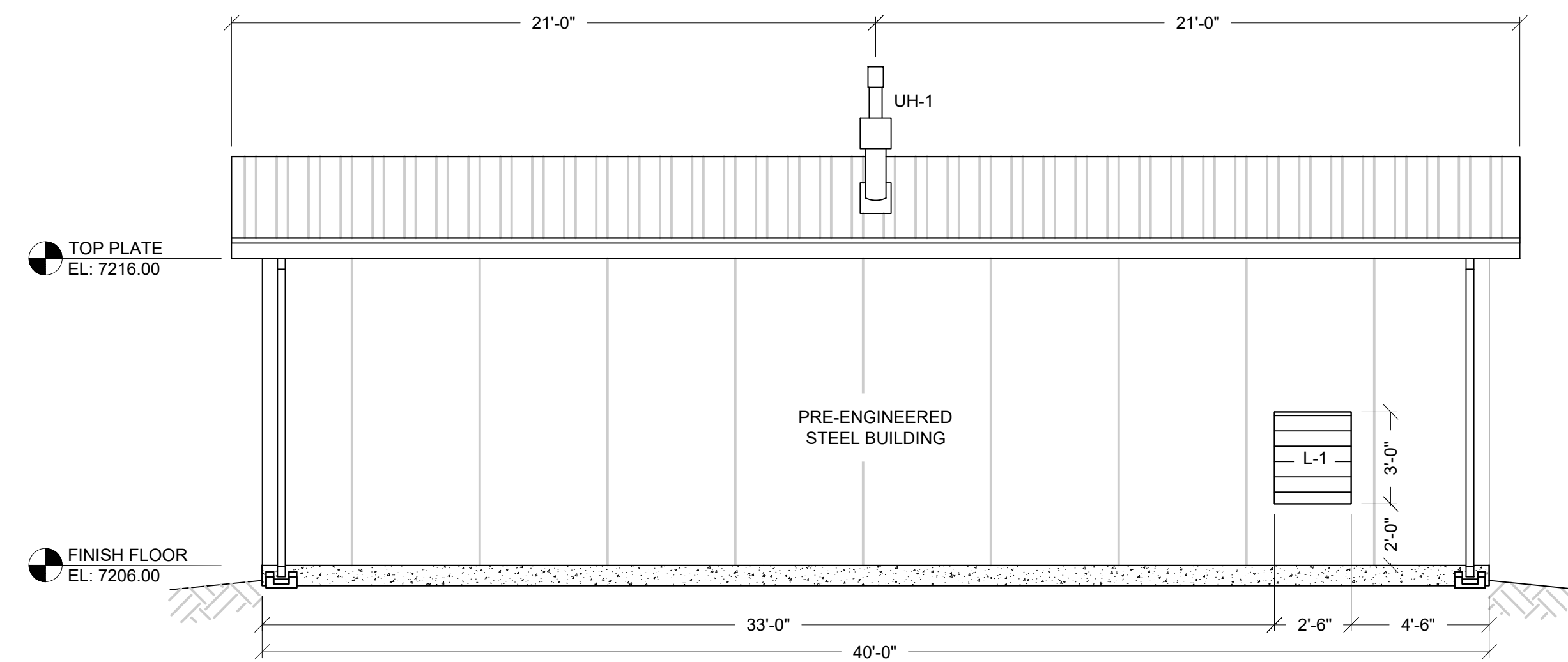
LIGHTING FIXTURE SCHEDULE						
SYMBOL	QTY.	MFR.	CATALOG NUMBER	DESCRIPTION	MTG.	INPUT VA
	3	NUVO LIGHTING	65-671	LED WALL-PACK, CUT-OFF TYPE, 120-277VAC, WT: 5 LB. BRONZE, IP 65 RATED, LENSE-IMPACT RESISTANT PC.	WALL 10'-6" AFF	40



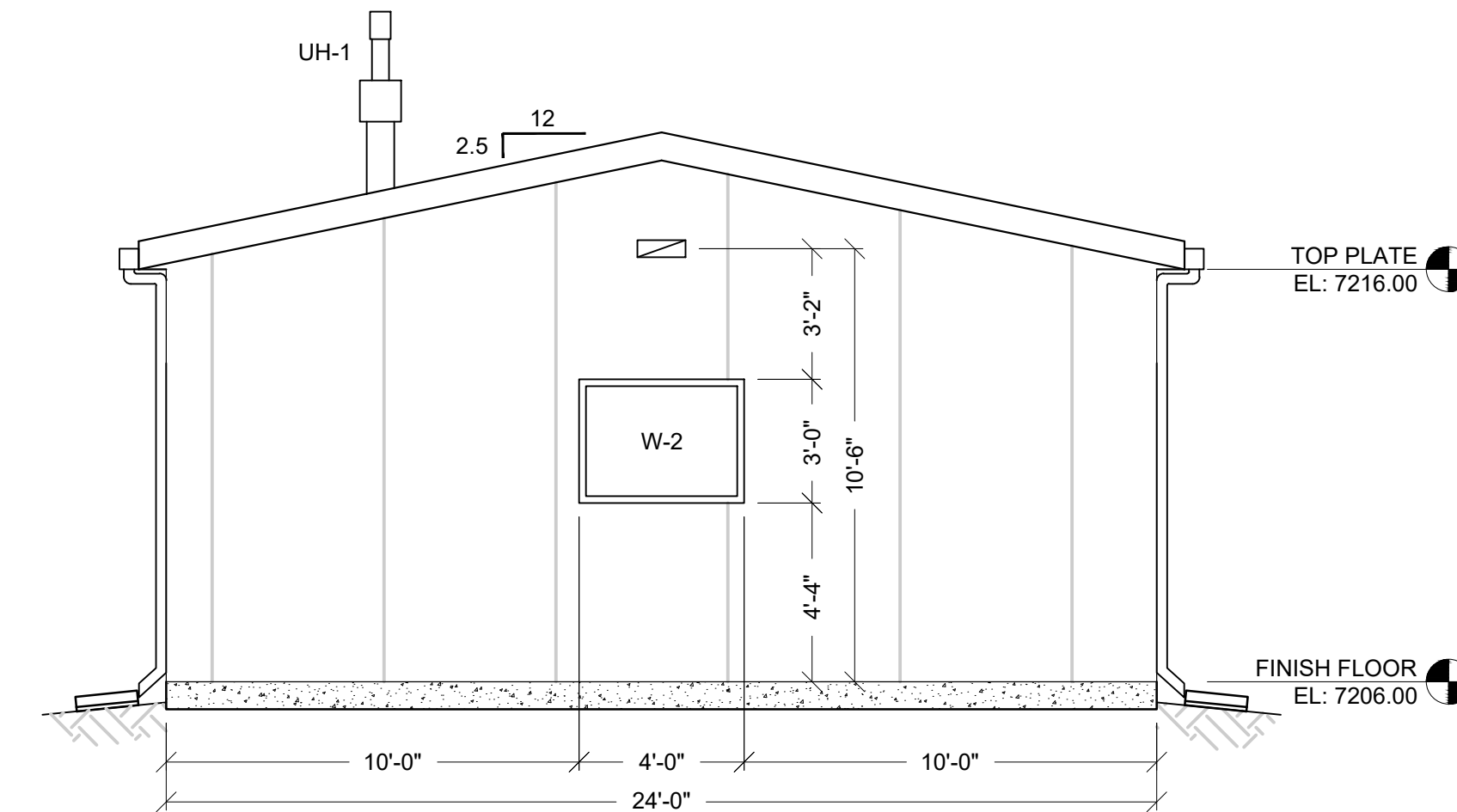
**NORTHEAST ELEVATION**  
1/4" = 1'-0"



**NORTHWEST ELEVATION**  
1/4" = 1'-0"



**SOUTHWEST ELEVATION**  
1/4" = 1'-0"



**SOUTHEAST ELEVATION**  
1/4" = 1'-0"

48 HOURS BEFORE YOU ARE TO CALL UTILITY NOTIFICATION CENTER OF COLORADO (UNCCO) 811  
GAS, ELECTRIC, TELEPHONE, CATV, AND PIPES AND CABLES ARE LOCATED AT THE PANTHAULEE EASTERN PIPELINE LOCATIONS  
**SCALE VERIFICATION**  
BAR IS ONE INCH ON ORIGINAL DRAWING  
IF NOT ONE INCH ON THIS SHEET SCALE ACCORDINGLY

NO.	DESCRIPTION	BY	DATE
1	EL PASO COUNTY SDF SUBMITTAL	JCS	6/30/23
2	EPC SUBMITTAL #2	JCS	7/7/23

**RG AND ASSOCIATES, LLC**  
4885 Ward Road, Suite 100 • Wheat Ridge, CO 80033  
Del Norte • Wheat Ridge  
303-293-8107 • www.rgengineers.com

PUMP HOUSE SIX UTILITY BUILDING  
LIGHTING PLAN  
PAINT BRUSH HILLS METROPOLITAN DISTRICT  
9885 TOWNER AVENUE  
PEYTON, CO 80831

DRAWN BY:	DESIGNED BY:
JCS	JS/RG
JOB NUMBER:	1070.0026
DATE:	7/7/23
SCALE:	1/4" = 1'-0"
DRAWING DESCRIPTION:	LIGHTING PLAN
SHEET NO.:	1 of 1

*Handwritten signature and date:*  
R. J. [Signature]  
7/7/23