

GENERAL NOTES

- ALL UTILITY CONSTRUCTION TO BE CONDUCTED IN CONFORMANCE WITH THE CURRENT STERLING RANCH METROPOLITAN DISTRICT (SRMD, THE DISTRICT) SPECIFICATIONS.
- ALL PLANS ON THE JOB SITE SHALL BE SIGNED BY THE DISTRICT AND THE DISTRICT'S ENGINEER. ANY REVISION TO THE PLANS SHALL BE SO NOTED WITH THE OLD DRAWING MARKED NOT VALID.
- ALL STATIONING IS CENTERLINE UNLESS OTHERWISE NOTED. ALL ELEVATIONS ARE CENTERLINE UNLESS OTHERWISE NOTED.
- ALL MATERIALS AND WORKMANSHIP SHALL BE SUBJECT TO INSPECTION BY THE DISTRICT. THE DISTRICT RESERVES THE RIGHT TO ACCEPT OR REJECT ANY SUCH MATERIALS AND WORKMANSHIP THAT DOES NOT CONFORM TO ITS STANDARDS AND SPECIFICATIONS.
- ALL WATER AND SEWER SERVICE LOCATIONS SHALL BE CLEARLY MARKED ON EITHER THE CURB HEAD OR THE FACE OF THE CURB, WITH AN "S" FOR SEWER AND A "W" FOR WATER.
- DUCTILE IRON PIPES, INCLUDING FITTINGS, VALVES AND FIRE HYDRANTS, SHALL BE WRAPPED WITH POLYETHYLENE TUBING, DOUBLE BONDED AT EACH JOINT AND ELECTRICALLY ISOLATED. BONDING AND ANODE CONNECTIONS SHALL BE THOROUGHLY COATED WITH BITUMINUOUS COATINGS.
- ALL DUCTILE IRON PIPE LESS THAN 12 INCHES AND FITTINGS SHALL HAVE CATHODIC PROTECTION USING TWO NO. 6 WIRES WITH 17 LB MAGNESIUM ANODES EVERY 400 FEET AND 9 LB MAGNESIUM ANODES AT EACH FITTING. ALL DUCTILE IRON PIPE 12 INCHES AND GREATER AND FITTINGS SHALL HAVE CATHODIC PROTECTION USING TWO NO. 6 WIRES WITH 17 LB MAGNESIUM ANODES EVERY 300 FEET AND 9 LB MAGNESIUM ANODES AT EACH FITTING.
- ALL PIPE MATERIAL, BACKFILL AND INSTALLATION SHALL CONFORM TO THE APPLICABLE SPECIFICATIONS OF THE CITY OF COLORADO SPRINGS, COLORADO DEPARTMENT OF TRANSPORTATION, EL PASO COUNTY DEPARTMENT OF TRANSPORTATION, COLORADO SPRINGS UTILITIES AND THE GEOTECHNICAL ENGINEER.
- COMPACTION TESTS SHALL BE 95% STANDARD PROCTOR AS DETERMINED BY ASTM D698, UNLESS OTHERWISE APPROVED BY THE DISTRICT OR HIGHER STANDARD AS IMPOSED BY ANOTHER AGENCIES HAVING RIGHT-OF-WAY JURISDICTION. THIS SHALL INCLUDE ALL VALVES, FIRE HYDRANT RUNS, WATER & SEWER SERVICE LINES AND MANHOLES. ALL REPORTS SHALL BE SUBMITTED TO THE DISTRICT FOR REVIEW AND APPROVAL.
- THE LOCATION OF ALL EXISTING UTILITIES SHOWN ON THE DRAWINGS ARE APPROXIMATE ONLY. THE LOCATION OF ALL UTILITIES SHALL BE FIELD VERIFIED PRIOR TO COMMENCING CONSTRUCTION ACTIVITIES. THE DISTRICT SHALL BE NOTIFIED OF ANY DEVIATIONS TO THE LINE AND/OR GRADE AS DEPICTED ON THE PLANS. CONTRACTOR SHALL SUBMIT TO THE DISTRICT AND THE ENGINEER OF RECORD A REPORT OF THE FIELD VERIFIED INFORMATION PRIOR TO THE START OF CONSTRUCTION.
- ALL BENDS SHALL BE FIELD STAKED PRIOR TO THE START OF CONSTRUCTION.
- BENDS, DEFLECTION & CUT PIPE LENGTHS SHALL BE USED TO HOLD HORIZONTAL ALIGNMENT OF SEWER AND WATER LINES TO NO MORE THAN 0.5' FROM THE DESIGNED ALIGNMENT. CONSTRUCTION STAKES TO BE AT 25' INTERVALS ALONG CURVES TO ASSURE LOCATION OF PIPE LINE CONSTRUCTION.
- AT ALL LOCATIONS WHERE CAP AND STUB IS NOTED ON DRAWINGS, PROVIDE A PLUG AT THE END OF THE PIPE JOINT NEAREST THE SPECIFIED STATION. PROVIDE A REVERSE ANCHOR AT ALL WATER LINE PLUGS.
- ALL UNUSED SALVAGED WATER UTILITY MATERIAL SHALL BE RETURNED TO THE METROPOLITAN DISTRICT AS REQUESTED.
- AT THE CONTRACTOR'S EXPENSE, ALL UTILITY MAINS SHALL BE SUPPORTED AND PROTECTED SUCH THAT THEY SHALL FUNCTION CONTINUOUSLY DURING CONSTRUCTION OPERATIONS. SHOULD A UTILITY MAIN FAIL AS A RESULT OF THE CONTRACTOR'S OPERATION, IT SHALL BE REPLACED IMMEDIATELY BY THE CONTRACTOR OR BY THE DISTRICT AT FULL COST OF LABOR AND MATERIALS TO THE CONTRACTOR/DEVELOPER.
- PUMPING OR BYPASS OPERATIONS SHALL BE REVIEWED AND APPROVED BY BOTH THE DISTRICT AND THE DISTRICT ENGINEER PRIOR TO EXECUTION.
- THE CONTRACTOR SHALL REPLACE OR REPAIR DAMAGE TO ALL SURFACE IMPROVEMENTS, INCLUDING BUT NOT LIMITED TO FENCES, LANDSCAPING, CURB AND GUTTER AND/OR ASPHALT THAT MAY BE CAUSED DURING CONSTRUCTION.
- ALL CONTRACTORS WORKING ON OR NEAR A WATER OR SEWER FACILITY (TO INCLUDE SERVICE LINE) SHALL HAVE LIABILITY INSURANCE NAMING THE DISTRICT AS AN ADDITIONAL INSURED AND SHALL PROVIDE A CURRENT COPY OF WORKERS COMPENSATION INSURANCE ON FILE WITH THE DISTRICT. NO WORK CAN PROCEED WITHOUT CURRENT CERTIFICATES ON FILE AT THE DISTRICTS' OFFICE.
- THE CONTRACTOR SHALL NOTIFY THE DISTRICT AND ALL AFFECTED UTILITY COMPANIES ADJACENT TO THE PROPOSED UTILITY CONSTRUCTION A MINIMUM OF 48 HOURS AND A MAXIMUM OF 96 HOURS PRIOR TO THE START OF CONSTRUCTION. A WEEKLY CONSTRUCTION MEETING SHALL BE REQUIRED WITH THE CONTRACTOR, DISTRICT ENGINEER AND ALL OTHER PARTIES AS DEEMED NECESSARY BY THE DISTRICT.
- COMMENCEMENT OF CONSTRUCTION OF WATER/SEWER SYSTEMS WITHIN THE METROPOLITAN DISTRICT:
 - PRIOR TO THE START OF CONSTRUCTION, A PRE-CONSTRUCTION MEETING IS REQUIRED A MINIMUM OF 48 HOURS IN ADVANCE OF COMMENCEMENT OF WORK. A REPRESENTATIVE OF THE OWNER OR DEVELOPER, A REPRESENTATIVE OF THE CONTRACTOR AND DESIGN ENGINEER ARE REQUIRED TO ATTEND. CONTACT THE DISTRICT TO SCHEDULE THE PRE-CONSTRUCTION MEETING. NO PRE-CONSTRUCTION MEETING CAN BE SCHEDULED PRIOR TO FOUR (4) SIGNED/ APPROVED PLAN SETS BE RECEIVED BY THE DISTRICT.
 - THE CONTRACTOR IS REQUIRED TO NOTIFY THE DISTRICT A MINIMUM OF 48 HOURS AND A MAXIMUM OF 2 WEEKS PRIOR TO THE START OF CONSTRUCTION. THE CONTRACTOR SHALL ALSO NOTIFY AFFECTED UTILITY COMPANIES AT LEAST 48 HOURS PRIOR TO THE START OF CONSTRUCTION ADJACENT TO THE KNOWN UTILITY LINES.
- TESTING OF FACILITIES:
 - THE CONTRACTOR SHALL NOTIFY THE DISTRICT A MINIMUM OF 48 HOURS AND A MAXIMUM OF 96 HOURS PRIOR TO THE START OF ANY TESTING.
 - ALL SECTIONS OF WATER LINE ARE TO MEET THE FOLLOWING PRESSURE TESTING REQUIREMENTS:
 - TEST 100% OF ALL LINES
 - MUST PASS PRESSURE TEST TO 200 PSI FOR TWO HOURS (UNLESS OTHERWISE APPROVED ON THE PLANS).
 - ALL SANITARY SEWER FACILITIES ARE TO MEET THE FOLLOWING TESTING REQUIREMENTS
 - ALL LINES SHALL BE JET CLEANED PRIOR TO VACUUM OR PRESSURE TESTING
 - ALL MANHOLES SHALL BE VACUUM TESTED WITH DISTRICT STAFF PRESENT PRIOR TO CCTV INSPECTION.
 - SEWER MAINS TO BE PRESSURE TEST PRIOR TO CCTV INSPECTION
 - ALL LINES SHALL BE CCTV INSPECTED AND VIDEO SHALL TO BE SUBMITTED TO THE DISTRICT FOR REVIEW AND APPROVAL.
- PRELIMINARY ACCEPTANCE SHALL BE DEFINED AS THE POINT IN TIME THAT THE DISTRICT ACCEPTS THE FACILITY FOR USE. ALL SURFACE IMPROVEMENTS AND RESTORATION SHALL BE COMPLETED WITHIN 30 DAYS OF COMMENCEMENT. SHOULD THE CONTRACTOR FAIL TO COMPLETE ALL SURFACE IMPROVEMENTS AND RESTORATION WITHIN 30 DAYS OF COMMENCEMENT OF SERVICE, THE DISTRICT, AT THEIR DISCRETION, MAY ELECT TO COMPLETE THE IMPROVEMENTS AT THE CONTRACTORS COST.
- FINAL ACCEPTANCE BY THE DISTRICT OF ANY LINE OR SYSTEM SHALL NOT OCCUR UNTIL COMPLETION OF FINAL ASPHALT LAYERS AND/OR FINAL COMPLETION AND/OR RESTORATION OF ALL SURFACE IMPROVEMENTS. THE WARRANTY PERIOD FOR ALL FACILITIES PRIOR TO FINAL ACCEPTANCE SHALL BE 24 MONTHS COMMENCING AFTER PRELIMINARY ACCEPTANCE.
- ACCEPTANCE:
 - THE DISTRICT MAY GIVE PRELIMINARY ACCEPTANCE ONCE ALL OF THE TESTS ON ALL THE LINES HAVE BEEN COMPLETED AND A WALK-THRU HAS OCCURRED.
 - A SECOND ACCEPTANCE MAY OCCUR ONCE FIRST LIFT OF ASPHALT GOES DOWN AND A SECOND WALK-THRU OF THE SYSTEM OCCURS. IF ALL FACILITIES ARE CLEAN AND ACCESSIBLE, A FINAL ACCEPTANCE MAY OCCUR (THE DISTRICT MAY REQUIRE CLEANING AND RE-VIDEO OF THE SYSTEM, DEPENDING ON THE SEVERITY OF THE CONTAMINATION).
- ALL WATER AND SEWER MAINS, INCLUDING SERVICE LINES, SHALL HAVE "AS-BUILT" DRAWINGS PREPARED AND APPROVED PRIOR TO PRELIMINARY ACCEPTANCE BY THE DISTRICT.
- ALL COMMERCIAL/BUSINESS DEVELOPMENTS SHALL HAVE AN EIGHT INCH (MIN.) WATER MAIN LOOPED THROUGH THE PROPOSED PROPERTY WITH GATE VALVES LOCATED WHERE THE MAIN ENTERS THE PROPERTY LINE. AN EIGHT INCH SEWER MAIN SHALL BE INSTALLED FOR SERVICE TO COMMERCIAL/BUSINESS DEVELOPMENTS, AND A MANHOLE SHALL BE LOCATED WHERE THE MAIN ENTERS THE PROPERTY. THE END OF THE MAINS SHALL BE MARKED WITH THE APPROPRIATE COLORED CARSONITE MARKER ALONG WITH TRACER WIRE.
- AFTER REVIEW AND APPROVAL OF PLANS FOR THE EXTENSION OF LINES, FACILITIES AND/OR SERVICES, CONSTRUCTION MUST BE COMMENCED WITHIN 18 MONTHS FOR RESIDENTIAL SUBDIVISIONS AND 12 MONTHS FOR ANY COMMERCIAL INSTALLATIONS.
- INSPECTION FEES: CALL THE DISTRICT (719-495-2500) FOR FEE SCHEDULE.

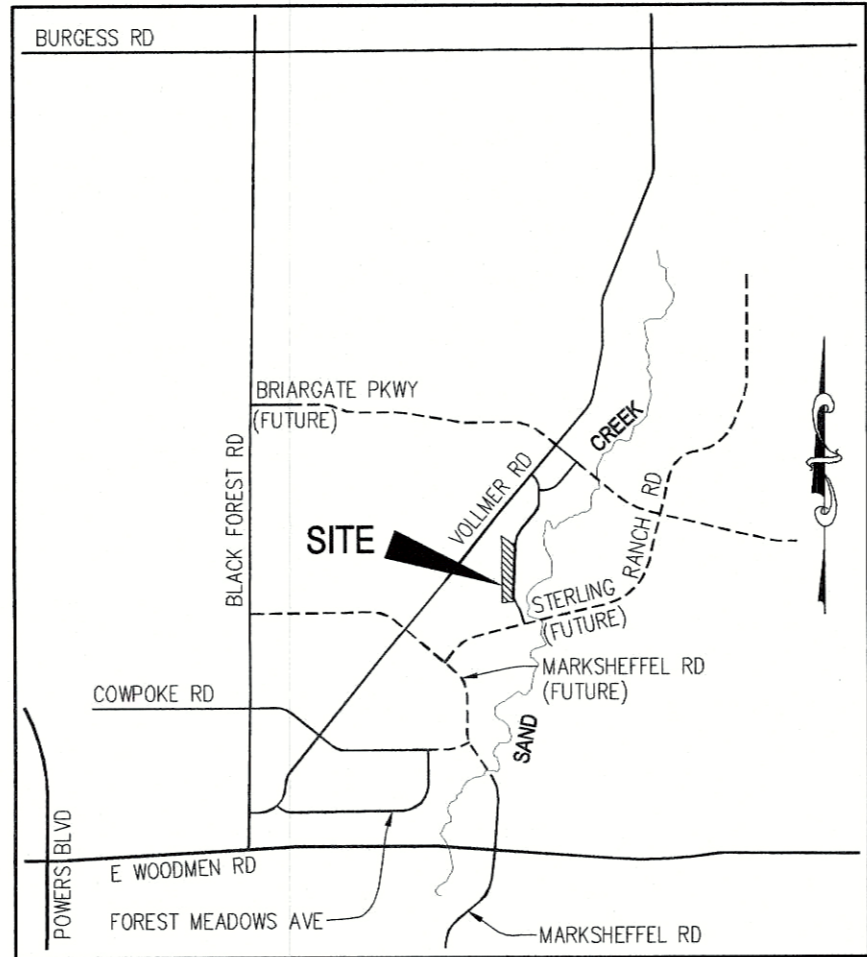
BRANDING IRON AT STERLING RANCH FILING NO. 1

COUNTY OF EL PASO, STATE OF COLORADO

WATER SYSTEM PLAN

(INCLUDING UTILITY SERVICE PLAN)

OCTOBER 2018



VICINITY MAP
N.T.S.



SITE MAP
N.T.S.

WATER SYSTEM INSTALLATION NOTES

- ALL WATER AND FORCE MAIN PIPE SHALL BE AWWA C900 PVC, OR EQUAL, PRESSURE CLASS 200. ALL WATER AND FORCE MAIN FITTINGS SHALL HAVE MECHANICAL RESTRAINS AND THRUST BLOCKS. ALL WATER AND FORCE MAIN PIPE SHALL HAVE A MINIMUM COVER DEPT OF FIVE AND ON-HALF (5.5) FEET.
- ALL WATER VALVES ASSOCIATED WITH THE POTABLE WATER SYSTEM SHALL BE OPEN CLOCKWISE. ALL VALVES INSTALLED IN LANDSCAPED AREAS AND/OR NOT WITHIN PAVED STREETS SHALL BE MARKED WITH CARSONITE MARKERS. ALL VALVES ASSOCIATED WITH THE RAW WATER SYSTEM SHALL BE OPEN COUNTERCLOCKWISE AND MARKED WITH CARSONITE MARKERS AS APPLICABLE.
- THE DEVELOPER OR HIS ENGINEER SHALL LOCATE ALL FIRE HYDRANTS AND SERVOIC STUB-OUTS FOR FUTURE DEVELOPEMENT. ANY REQUIRED REALIGNMENT, (HORIZONTAL OR VERTICAL), SHALL BE AT THE EXPENSE OF THE DEVELOPER. FIRE HYDRANT LOCATION SHALL BE REVIEWED AND APPROVED BY THE APPLICABLE FIRE AUTHORITY.
- FIRE HYDRANTS SHALL BE OPEN RIGHT WITH 7/8" x 7/8" SQUARE TAPERED ALONG WITH SERVICE CAPS. LUBRICATION TYPE: (GREASE). ACCEPTABLE BRANDS ARE AMERICAN AVK SERIES 2700 (MODERN) AND MUELLER SUPER CENTURION 250.
- ALL MAIN LINES (PVC & DUCTILE IRON) SHALL BE INSTALLED WITH COATED #12 TRACER WIRE WITH TEST STATIONS AT INTERVALS NO GREATER THAN 500 FT (VALVE BOXES CAN BE USED AT INTERSECTIONS AND SERVICE STUBS).
- CONTRACTOR SHALL MAKE CONNECTIONS TO EXISTING WATER LINE WITHOUT SHUTDOWN, OR ELSE NOTIFY THE DISTRICT OF ANY SERVICE SHUTDOWNS NECESSARY TO CONNECT TO EXISTING LINES.
- IRRIGATION SERVICES SHALL HAVE A STOP AND WASTE CURB STOP VALVE INSTALLED ALONG WITH TRACER WIRE EXTENDING BACK TO THE MAIN LINE.
- COMMENCEMENT OF USE OF WATER LINES AND/OR SYSTEMS:
 - NO WATER FACILITY SHALL BE PLACED IN SERVICE UNTIL AFTER THE COMPLETION OF ALL PRESSURE TESTING, FLUSHING, BAC-T TESTING, COMPACTION TESTING, AND AS-BUILT DRAWINGS ARE SUBMITTED AND APPROVED BY THE DISTRICT.
 - NO WATER FACILITY SHALL BE PLACED IN SERVICE UNTIL ALL SERVICE LINES ARE COMPLETED AND THE FIRST LIFT OF ASPHALT IS COMPLETED OVER THE LINE. IN THE CASE WHERE NO ASPHALT IS TO BE PLACED OVER THE LINE, SURFACE IMPROVEMENTS SHALL BE COMPLETED PRIOR TO USE OF THE FACILITY.
 - ALL EASEMENTS (PLATTED OR DEEDED) ARE DEDICATED, EXECUTED BY THE DISTRICT, AND RECORDED.

BENCHMARKS

- THE TOP OF AN ALUMINUM SURVEYORS CAP, STAMPED "3853", AT THE SOUTHEAST BOUNDARY CORNER OF BARBARICK SUBDIVISION
NORTHING = 411416.273
EASTING = 235167.071
ELEVATION = 7023.42
- THE TOP OF A RED PLASTIC SURVEYORS CAP, ILLEGIBLE, AT THE NORTHWEST BOUNDARY CORNER OF PAWNEE RANCHEROS SUBDIVISION
NORTHING = 410095.404
EASTING = 235052.131
ELEVATION = 7000.40
- THE TOP OF A RED PLASTIC SURVEYORS CAP, STAMPED "38141", AT THE SOUTHWEST BOUNDARY CORNER OF BARBARICK SUBDIVISION
NORTHING = 411399.962
EASTING = 233849.817
ELEVATION = 7030.82

AGENCIES

OWNER/DEVELOPER:	SR LAND, LLC 20 BOULDER CRESCENT, SUITE 201 COLORADO SPRINGS, CO 80903 JIM MORLEY (719) 471-1742
CIVIL ENGINEER:	M & S CIVIL CONSULTANTS, INC. 20 BOULDER CRESCENT, SUITE 110 COLORADO SPRINGS, CO 80903 VIRGIL A. SANCHEZ P.E. (719) 955-5485
COUNTY ENGINEERING:	EL PASO COUNTY PLANNING AND COMMUNITY DEVELOPMENT 2880 INTERNATIONAL CIRCLE, SUITE 110 COLORADO SPRINGS, CO 80910 JEFF RICE, P.E. (719) 520-6300
TRAFFIC ENGINEERING:	EL PASO COUNTY DEPARTMENT OF PUBLIC WORKS 3275 AKERS DRIVE COLORADO SPRINGS, CO 80922 JENNIFER IRVINE, P.E. (719) 520-6460
WATER RESOURCES:	STERLING RANCH METRO DISTRICT ENGINEERS JDS-HYDRO CONSULTANTS 545 E. PIKES PEAK AVE., SUITE 300 COLORADO SPRINGS, CO 80903 JOHN MCGINN (719) 668-8769
FIRE DISTRICT:	BLACK FOREST FIRE PROTECTION DISTRICT 11445 TEACHOUT ROAD COLORADO SPRINGS, CO 80908 CHIEF BRYAN JACK (719) 495-4300
GAS DEPARTMENT:	COLORADO SPRINGS UTILITIES 7710 DURANT DR. COLORADO SPRINGS, CO 80947 TIM WENDT (719) 668-3556
ELECTRIC DEPARTMENT:	MOUNTAIN VIEW ELECTRIC 11140 E. WOODMEN ROAD FALCON, CO 80831 (719) 495-2283
COMMUNICATIONS:	QWEST COMMUNICATIONS (U.N.C.C. LOCATORS) (800) 922-1987 AT&T (LOCATORS) (719) 635-3674

WATER & SEWER MAIN EXTENTIONS

ANY CHANGES OR ALTERATIONS AFFECTING THE GRADE, ALIGNMENT, ELEVATION AND/OR DEPTH OF COVER OF ANY WATER OR SEWER MAINS OR OTHER APPURTENANCE SHOWN ON THIS DRAWING SHALL BE THE RESPONSIBILITY OF THE OWNER/DEVELOPER. THE OWNER/DEVELOPER SHALL BE RESPONSIBLE FOR ALL OPERATIONAL DAMAGES AND DEFECTS IN INSTALLATION AND MATERIAL FOR MAINS AND SERVICES FROM THE DATE OF APPROVAL UNTIL FINAL ACCEPTANCE IS ISSUED.

SIGNED Jim Morley DATE 10/24/18
OWNER/DEVELOPER
PRINT NAME JAMES F. MORLEY
ADDRESS 20 BOULDER CRESCENT, SUITE 200
COLORADO SPRINGS, CO 80903

DISTRICT APPROVALS

THE STERLING RANCH METROPOLITAN DISTRICT RECOGNIZES THE DESIGN ENGINEER AS HAVING RESPONSIBILITY FOR THE DESIGN AND HAS LIMITED ITS SCOPE OF REVIEW ACCORDINGLY.

STERLING RANCH METROPOLITAN DISTRICT WATER DESIGN APPROVAL

DATE: 11/15/18 BY: J. McGinn

IN CASE OF ERRORS OR OMISSIONS WITH THE WATER DESIGN AS SHOWN ON THIS DOCUMENT THE STANDARDS AS DEFINED IN THE "RULES AND REGULATIONS FOR INSTALLATION OF WATER MAINS AND SERVICES" SHALL RULE.

APPROVAL EXPIRES 180 DAYS FROM DESIGN APPROVAL.

FIRE AUTHORITY APPROVAL

THE NUMBER OF FIRE HYDRANTS AND HYDRANT LOCATIONS SHOWN ON THIS WATER INSTALLATION PLAN ARE CORRECT AND ADEQUATE TO SATISFY THE FIRE PROTECTION REQUIREMENTS AS SPECIFIED BY THE BLACK FOREST FIRE PROTECTION DISTRICT SERVING THE PROPERTY NOTED ON THE PLANS.

BY B. J. McGinn DATE 11/15/18
Fire Chief
B. J. McGinn

SHEET INDEX

SHEET 1 TITLE SHEET
SHEET 2 WATER DISTRICT MAIN PLAN
SHEET 3 UTILITY SERVICE PLAN



BRANDING IRON AT STERLING RANCH FILING NO. 1

WATER PLANS

PROJECT NO. 09-006
SCALE: HORIZONTAL: 1"=50'
VERTICAL: 1"=5'

DATE: 11/10/2017
DESIGNED BY: VAS
DRAWN BY: ELY
CHECKED BY: GW

SHEET 1 OF 3
WT01

20 BOULDER CRESCENT, SUITE 110
COLORADO SPRINGS, CO 80903
PHONE 719/555-5465

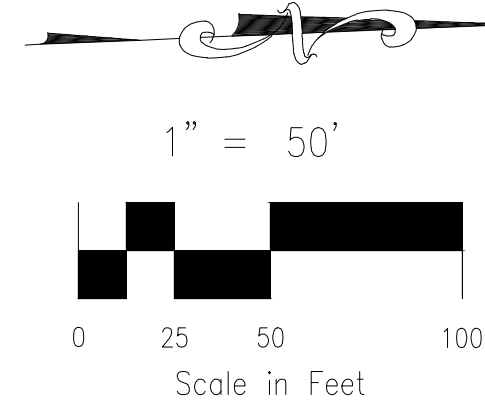
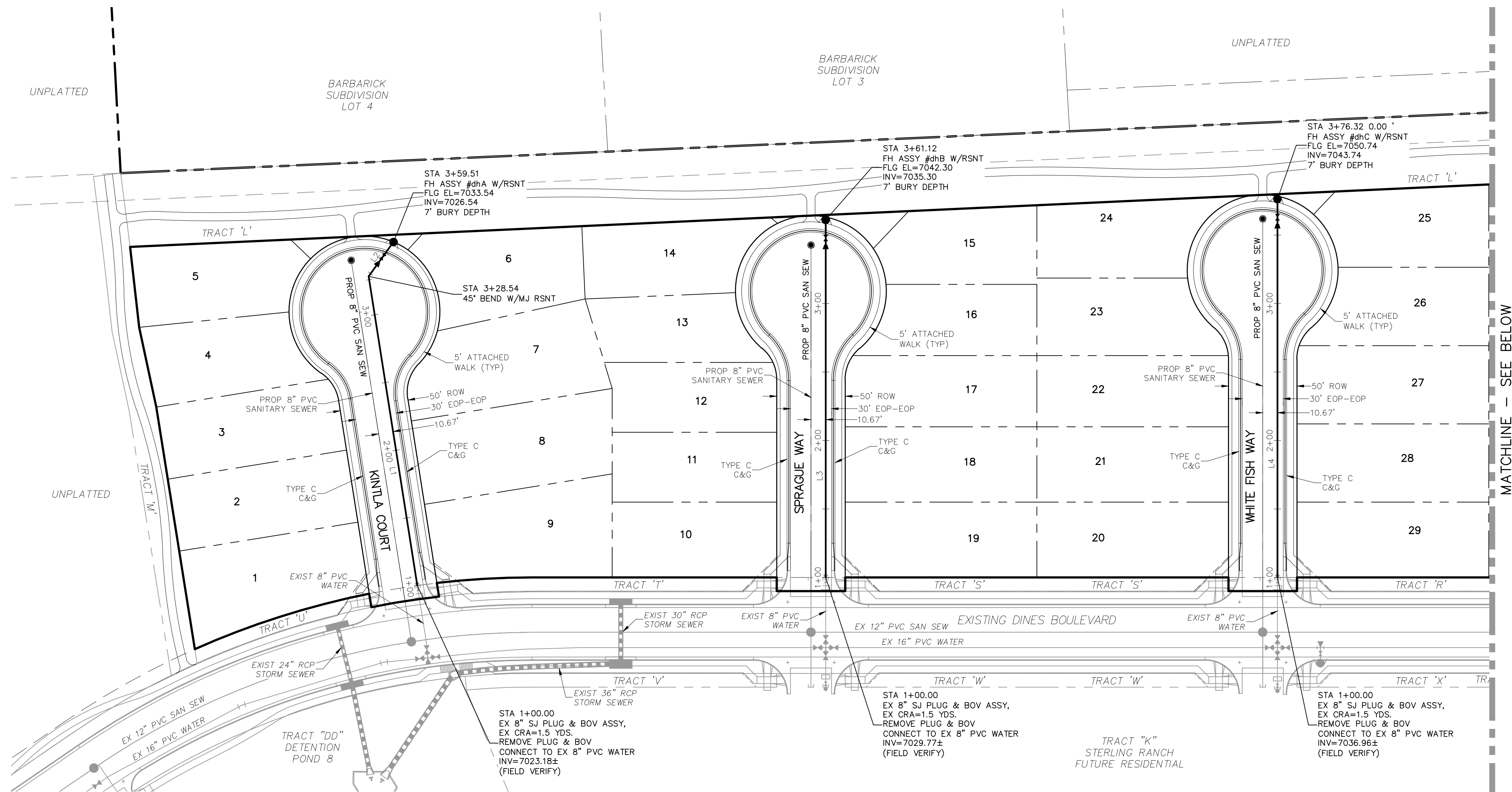
FOR AND ON BEHALF OF M&S CIVIL CONSULTANTS, INC.

37160
PROFESSIONAL ENGINEER
VIRGIL A. SANCHEZ, COLORADO P.E. NO. 37160

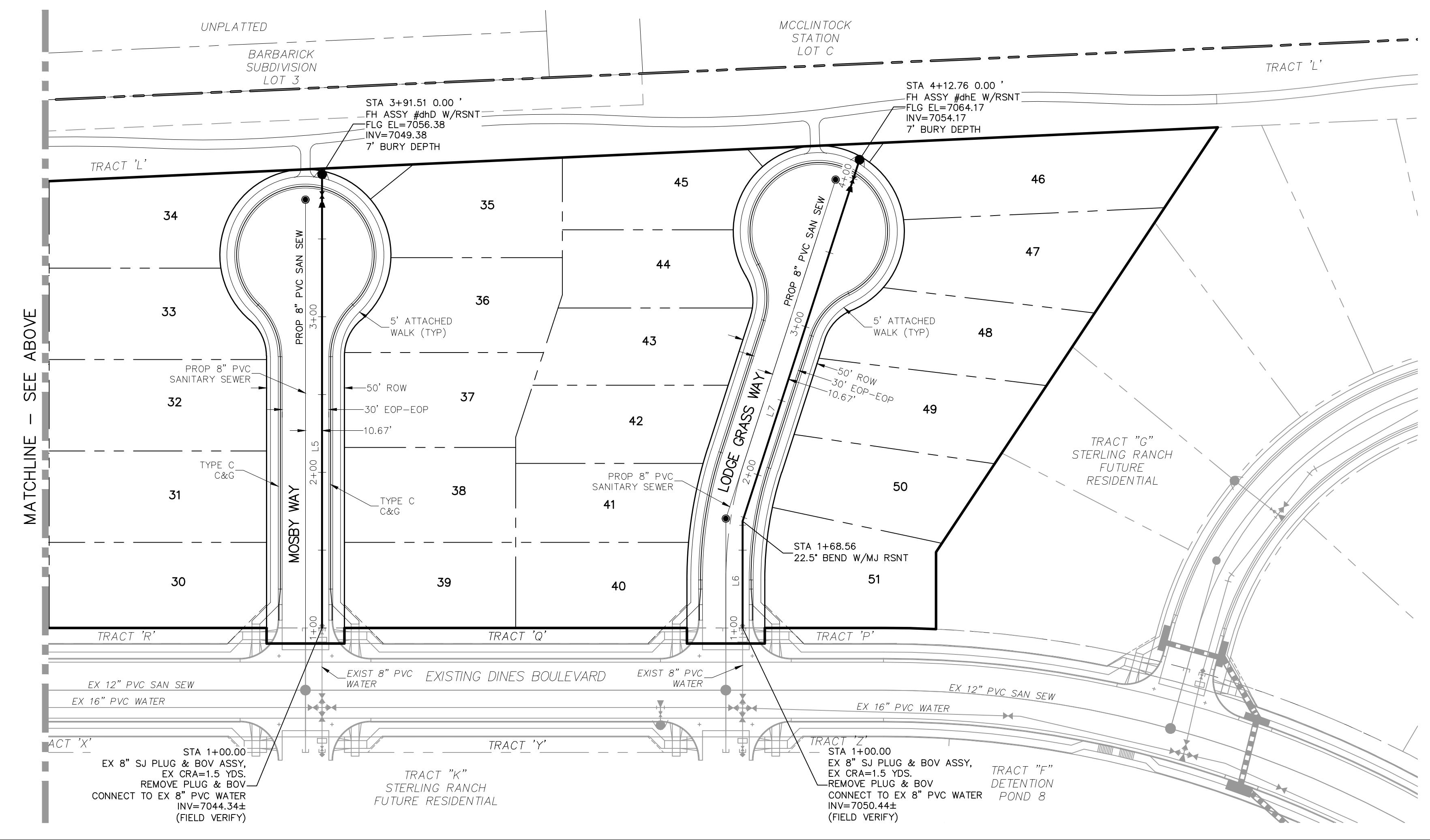
NO. DATE: BY: DESCRIPTION:

THE ENGINEER PREPARING THESE PLANS WILL NOT BE RESPONSIBLE, OR LIABLE FOR, UNAUTHORIZED CHANGES TO OR USES OF THESE PLANS. ALL CHANGES TO THE PLANS MUST BE IN WRITING AND MUST BE APPROVED BY THE PREPARER OF THESE PLANS.

CAUTION



WATER LINE-LINE TABLE		
LINE	LENGTH	DIRECTION
L1	228.54'	S83° 26' 41"W
L2	30.97'	N51° 33' 16"W
L3	261.12'	N87° 35' 34"W
L4	301.32'	N87° 35' 34"W
L5	291.51'	N87° 35' 34"W
L6	68.56'	N87° 35' 34"W
L7	244.19'	N69° 40' 03"W



BRANDING IRON AT STERLING RANCH FILING NO. 1

WATER PLANS

PROJECT NO. 09-006
DESIGNED BY: VAS
DRAWN BY: ELW
CHECKED BY: GW

DATE: 11/10/2017
SCALE: HORIZONTAL: 1"=50'
VERTICAL: 1"=5'

SHEET 2 OF 3
WT02

20 BOULDER CRESCENT, SUITE 110
COLORADO SPRINGS, CO 80903
PHONE: 719.555.5485

CIVIL CONSULTANTS, INC.

FOR AND ON BEHALF OF
M&S CIVIL CONSULTANTS, INC.

NO.	DATE	BY	DESCRIPTION	APPROVED BY	DATE

THE ENGINEER PREPARING THESE PLANS WILL NOT BE RESPONSIBLE, OR LIABLE FOR, UNAUTHORIZED CHANGES TO OR USES OF THESE PLANS. ALL CHANGES TO THE PLANS MUST BE IN WRITING AND MUST BE APPROVED BY THE PREPARER OF THESE PLANS.

CAUTION

