

**MASTER DEVELOPMENT DRAINAGE PLAN
and PRELIMINARY DRAINAGE REPORT
FOR
SADDLEHORN RANCH**

Engineering Review

04/10/2020 8:55:32 AM

dsdkuehster

stevekuehster@elpasoco.com

(719) 520-6813

**EPC Planning & Community
Development Department**

**Prepared For:
ROI Property Group, LLC
2495 Rigdon Street
Napa, CA 94558
(707) 365-6891**

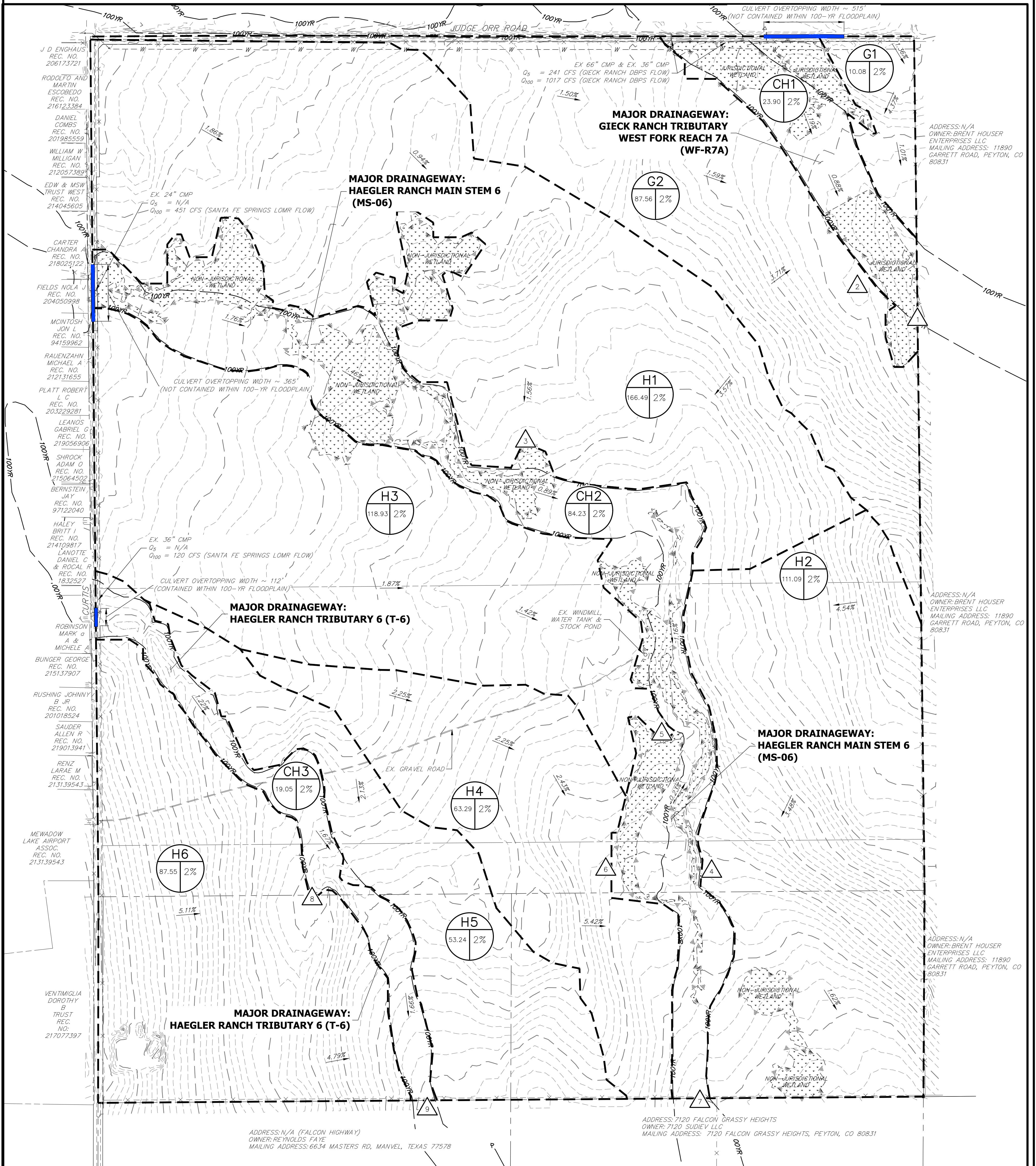
Minor comment on existing
drainage plan.

**December 18, 2019
Project No. 25142.00**

**Prepared By:
JR Engineering, LLC
5475 Tech Center Drive
Colorado Springs, CO 80919
719-593-2593**

**El Paso County PCD File No.
SP-19-006**

824 ACRE CURTIS ROAD SUBDIVISION EX. CONDITIONS DRAINAGE MAP

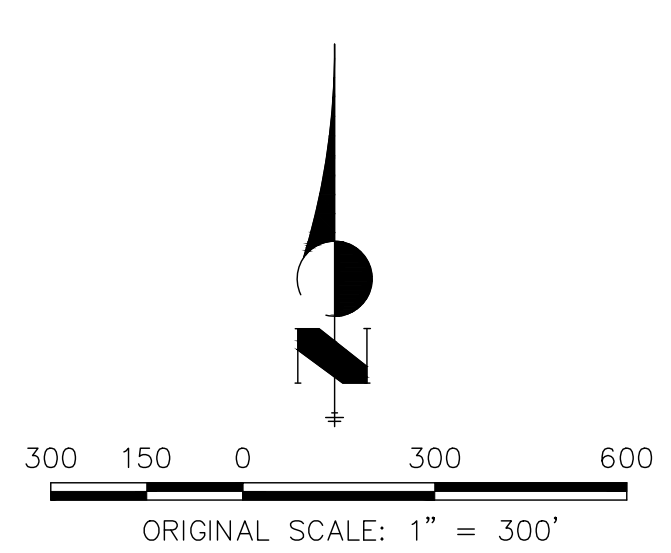


- LEGEND**
- BASIN DESIGNATION
 - I.D.: BASIN IDENTIFIER
A: BASIN AREA
B: % IMPERVIOUS
 - DESIGN POINT
 - BASIN DELINEATION
 - EXISTING INDEX CONTOURS
 - EXISTING INTERMEDIATE CONTOURS
 - EXISTING FLOW DIRECTION

| BASIN SUMMARY TABLE | | | | |
|---------------------|--------------|--------------------|----------------------|------------------------|
| Tributary Sub-Basin | Area (acres) | Percent Impervious | Q _s (cfs) | Q ₁₀₀ (cfs) |
| G1 | 10.1 | 2.0% | 0.00 | 0.1 |
| G2 | 87.6 | 2.0% | 1.5 | 76.4 |
| H1 | 166.5 | 2.0% | 0.1 | 81.0 |
| H2 | 111.1 | 2.0% | 0.2 | 91.1 |
| H3 | 118.9 | 2.0% | 0.9 | 64.1 |
| H4 | 63.3 | 2.0% | 1.4 | 73.2 |
| H5 | 53.2 | 2.0% | 0.3 | 28.2 |
| H6 | 87.6 | 2.0% | 0.2 | 110.1 |
| CH1 | 23.9 | 2.0% | 5.4 | 1038.0 |
| CH2 | 84.2 | 2.0% | 2.6 | 485.1 |
| CH3 | 19.1 | 2.0% | 0.1 | 127.3 |
| Total | 825.4 | N/A | 12.7 | 2174.6 |

| DESIGN POINT SUMMARY TABLE | | |
|----------------------------|----------------------|------------------------|
| Tributary Sub- | Q _s (cfs) | Q ₁₀₀ (cfs) |
| 1 | 6.80 | 1114.0 |
| 2 | 1.5 | 76.4 |
| 3 | 0.1 | 80.9 |
| 4 | 0.1 | 91.1 |
| 5 | 0.9 | 64.1 |
| 6 | 1.4 | 73.2 |
| 7 | 4.1 | 704.9 |
| 8 | 0.2 | 110.1 |
| 9 | 0.4 | 248.1 |

Please revise this basin summary. It is not possible for a 23.9 acre basin to generate 1038.0 CFS. fix all three CH1,2,3.



EX. DRAINAGE MAP
824 CURTIS ROAD
25142.00
11/17/19
SHEET 1 OF 1



Centennial 303-740-9393 • Colorado Springs 719-593-2593
Fort Collins 970-491-9888 • www.jrengineering.com