

**FINAL UTILITY REPORT
FOR
SADDLEHORN RANCH**

Prepared for:

RIO PROPERTY GROUP, LLC
2495 Rigdon Street
Napa, California 94558
(707) 365-6891
Contact, Brady Williams

Prepared by:

JR ENGINEERING, LLC
5475 Tech Center Drive, Suite 235
Colorado Springs, Colorado 80919
(719) 593-2593
Contact: Mike Bramlett, P.E.

November 27, 2019

Job Number 25142.00

ENGINEER'S STATEMENT:

The attached utility plan and report were prepared under my direction and supervision and are correct to the best of my knowledge and belief. Said utility report has been prepared according to the criteria established by Colorado Springs Utilities Criteria and said report is in conformity with the master plans for water distribution and wastewater collection for the affected area. I accept responsibility for any liability caused by any negligent acts, errors, or omissions on my part in preparing this report.

Mike Bramlett, Colorado P.E. # 32314
For and On Behalf of JR Engineering, LLC

Date

Table of Contents

GENERAL LOCATION AND DESCRIPTION.....	1
WATER SYSTEM ANALYSIS.....	2
<i>Proposed Water System.....</i>	<i>2</i>
<i>Hydraulic Design.....</i>	<i>3</i>
<i>Design Scenarios.....</i>	<i>4</i>
CONCLUSION.....	6
REFERENCES.....	7

APPENDIX

A: VICINITY MAP

B: WATER SYSTEM DATA

C: REFERENCE MATERIAL

GENERAL LOCATION AND DESCRIPTION

This report presents the utility system analysis for the water distribution for the proposed Saddlehorn Ranch development. The Saddlehorn Ranch development has not been referenced in any previous reports. Proposed lot counts and known densities are used in calculations presented in this report for planning areas that were previously based on approved planning densities. This report has been prepared to demonstrate compliance with all necessary criteria.

Project Location and Description

This report presents the utility system analysis for the water system for Saddlehorn Ranch. Saddlehorn Ranch is comprised of approximately 834 developed acres and is located in portions of Section 3 and Section 10 of Township 13 South, Range 65 West of the 6th P.M., El Paso County, Colorado. This report accounts for a total of 218 SFE, 49 SFEs for Filing 1, and 169 SFE for future Filings. The site is bounded on the west by Curtis Road, on the east by undeveloped land, on the south by undeveloped land and low density houses, and on the north by Judge Orr Road. See Appendix A for the Site Vicinity Map.

Easements or tracts necessary for utilities will be provided at time of final platting in accordance with the El Paso County standards regarding location and size of easements and tracts.

The purpose of this study is to analyze the water demands of the proposed development. The water system was analyzed for 3 scenarios; Average Day, Max Day, and Max Day Plus Fire, at 2 different pressures for a total of 6 scenarios. The results of this study have been compared to Colorado Springs Utilities (CSU) Hydraulic Analysis Report Modeling Criteria to demonstrate design compliance. See Appendix B for relevant exhibits.

All proposed on-site lots will use septic systems in lieu of a sanitary sewer, therefore no analysis of a sanitary network was done for this development.

WATER SYSTEM ANALYSIS

Existing Water System

There is currently a single 12” PVC waterline running parallel approximately 50 feet to the south of the northern property line. The line will not be used by any onsite lots, but will remain in place. A map of the site and the existing water mains can be seen in Appendix B.

Proposed Water System

A total of 218 SFE’s are estimated for the proposed water system collection for the Saddlehorn development. There are 49 SFE’s from Filing 1 and 169 SFE’s from future filings. The proposed water distribution system for the Saddlehorn Ranch development will be fed by an onsite water treatment plant to be designed by others. The proposed water system will include a series of 12 and 8-inch PVC water mains and will be looped to allow for all areas to be serviced with a critical pipe out of service. The total required storage volume at full build out is 343,732 gallons. The site’s elevation ranges approximately 115 feet from 6,660 to 6,775 feet. The WaterCAD model map as well as junction demands and storage volumes have been provided within Appendix B. The proposed water system is being designed as its own metro district which future filings and potentially adjacent developments will be a part of.

Hydraulic Design

Design criteria used to analyze the hydraulics of the site was established using the “Colorado Springs Utilities Waterline Extension and Service Standards.” The following is a summary of the criteria.

<u>Hydraulic Condition</u>	<u>Pressure (psi)</u>
Minimum dynamic pressures (based on 20% tank stage):	
Max Daily Demand + fire flow	20
Peak Hour Demand	60
 <u>Maximum Velocities and Head losses</u>	 <u>Unit</u>
Maximum velocity with Max Day Demands	5 fps
Maximum velocity with Max Day + Fire Flow Demands	20 fps
Maximum head loss through 8", 12", 16" (transmission):	3.0ft/1000ft
Hazen Williams 'C' factor: 120 (8" PVC), 123 (12" PVC)	
Required Fire Flow = 1,500 gpm	

Domestic Demand Design

Water System demands were established using the "Colorado Springs Utilities Waterline Extension and Service Standards." Design criteria for the analysis are summarized in Table 1 below.

Table 1: Water System Design Criteria

Type of Use	Average Daily Flow (gpd/DU)	Peaking Factor (Max Day/Avg. Day)
Residential: Single Family	595	2.65

Design Scenarios

The water distribution system utilized Bentley's WaterCAD V.8 to model and analyze the system. Three scenarios were completed; one for Average Daily Flow, one for Max Day flow, and one for Max Day flow plus fire flow. The scenarios were analyzed at two different pressures, 85psi and 105psi, which are the proposed upper and lower bounds of operating pressure for the proposed water treatment plant to be designed by others. To determine the operating pressures, a minimum ground elevation of 6768.50 was assumed for the water treatment plant and a conversion factor of 2.3ft/psi was applied. The tank HGL for the model was 6964.0 and 7010.0 for the 85psi and 105psi scenarios, respectively. The WaterCAD model map showing the analyses area is included within Appendix B. Since the development is outside of any existing pressure zone, none was used to determine required

pressure in the tank, while the peaking factor was assumed to be 2.65. Specific site demands for scenarios of average day, max day, and fire flows are found in Appendix B and a summary of the results are found in the tables below.

Table 1: Filing 15 Total Demand Summary Table

Overall Water Demand				
Dwelling Units	Unit Demand (gpd/DU)	Avg. Day Demand (gpd)	Peaking Factor	Max Day Demand (gpd)
218	595	129,710	2.65	343,732

85 PSI

Average Day

Average demands were assigned to the system consistent with those presented in Appendix B. The minimum pressure within the system for the average day scenario was calculated to be at junction J-225 at 81.8 psi. This exceeds the minimum of 60 psi. The maximum pressure within the system occurred at junction J-65 at 130.1 psi, and is below the maximum pressure of 180 psi. The maximum velocity in this scenario of 0.26 fps occurred in pipe P-264. The maximum allowable velocity within a pipe as designated by the CSU standards is 5 fps. A maximum absolute headloss of 0.02 ft. was calculated at pipe P-55. The maximum pipe loss as designated by CSU standards is 3ft/ 1000ft.

Max Day

Max day demands were assigned to the system consistent with those presented in Appendix B. The minimum pressure within the system for the max day scenario was calculated to be at junction J-225 at 81.6 psi. This exceeds the minimum of 60 psi. The maximum pressure within the system occurred at junction J-65 at 129.9 psi, and is below the maximum pressure of 180 psi. The maximum velocity in this scenario of 0.68 fps occurred in pipe P-264. The maximum allowable velocity within a pipe as designated by the CSU standards is 5 fps. A maximum absolute headloss of 0.10 ft. was calculated at pipe P-55. The maximum pipe loss as designated by CSU standards is 3ft/ 1000ft.

Max Day + Fire Flow

The fire flow used was governed by the IFC s Table B105.1 “minimum required fire-flow and flow duration for buildings”. The required storage for fire flow represents 1,500 gpm for a two-hour period of time or 180,000 gallons. Max day demands were assigned to the system consistent with those presented in Appendix B. Additionally, a fire flow of 1,500 gpm was iteratively applied to individual proposed hydrant locations in order to determine the worst case condition. Under all scenarios, all points in the system exceeded the required 20 psi residual pressure. The max day plus the fire flow scenario that produced the lowest residual pressure in the system occurred when the fire flow of 1,500 gpm was applied to J-225 resulting in a residual pressure of 43.5 psi at J-225. The maximum velocity in this scenario of 9.62 fps occurred in pipe P-148. The maximum allowable velocity within a pipe as designated by the CSU standards is 20 fps. Flow test results demonstrate that the proposed system is capable of providing the required flows under modeled conditions. Refer to Appendix B for both the flow test and pressure test results.

*105 PSI**Average Day*

Average demands were assigned to the system consistent with those presented in Appendix B. The minimum pressure within the system for the average day scenario was calculated to be at junction J-225 at 101.7 psi. This exceeds the minimum of 60 psi. The maximum pressure within the system occurred at junction J-65 at 150.0 psi, and is below the maximum pressure of 180 psi. The maximum velocity in this scenario of 0.26 fps occurred in pipe P-264. The maximum allowable velocity within a pipe as designated by the CSU standards is 5 fps. A maximum absolute headloss of 0.02 ft. was calculated at pipe P-55. The maximum pipe loss as designated by CSU standards is 3ft/ 1000ft.

Max Day

Max day demands were assigned to the system consistent with those presented in Appendix B. The minimum pressure within the system for the max day scenario was calculated to be at junction J-225 at 101.5 psi. This exceeds the minimum of 60 psi. The maximum pressure within the system occurred

at junction J-65 at 149.8 psi, and is below the maximum pressure of 180 psi. The maximum velocity in this scenario of 0.68 fps occurred in pipe P-264. The maximum allowable velocity within a pipe as designated by the CSU standards is 5 fps. A maximum absolute headloss of 0.10 ft. was calculated at pipe P-55. The maximum pipe loss as designated by CSU standards is 3ft/ 1000ft.

Max Day + Fire Flow

The fire flow used was governed by the IFC s Table B105.1 “minimum required fire-flow and flow duration for buildings”. The required storage for fire flow represents 1,500 gpm for a two-hour period of time or 180,000 gallons. Max day demands were assigned to the system consistent with those presented in Appendix B. Additionally, a fire flow of 1,500 gpm was iteratively applied to individual proposed hydrant locations in order to determine the worst case condition. Under all scenarios, all points in the system exceeded the required 20 psi residual pressure. The max day plus the fire flow scenario that produced the lowest residual pressure in the system occurred when the fire flow of 1,500 gpm was applied to J-225 resulting in a residual pressure of 63.4 psi at J-225. The maximum velocity in this scenario of 9.62 fps occurred in pipe P-148. The maximum allowable velocity within a pipe as designated by the CSU standards is 20 fps. Flow test results demonstrate that the proposed system is capable of providing the required flows under modeled conditions. Refer to Appendix B for both the flow test and pressure test results.

Potential SIA Items and Permitting

There are no off-site improvements necessary to complete this project.

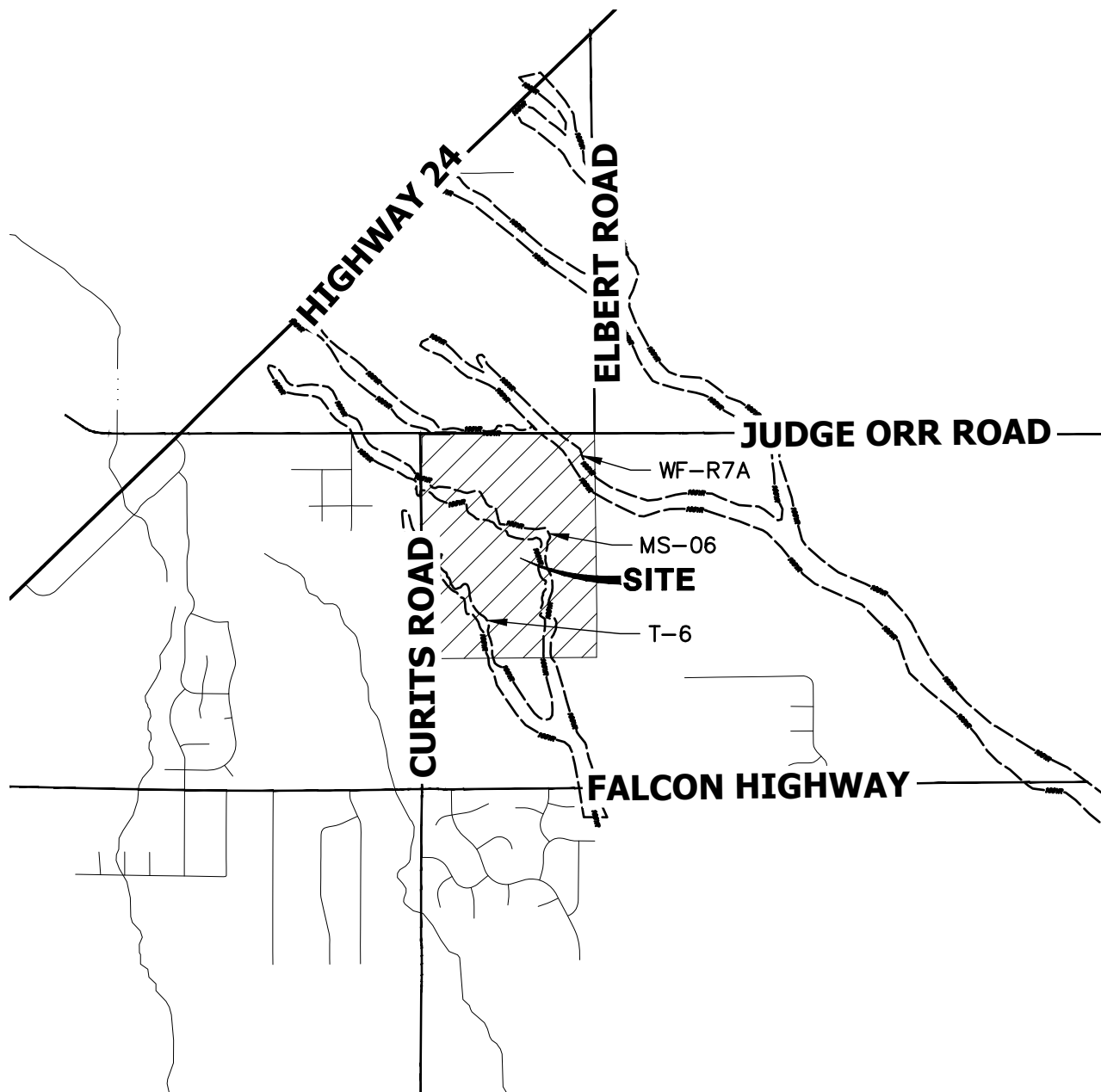
CONCLUSION

The proposed water system that will service Saddlehorn Ranch site has been demonstrated to be in compliance with the standards set forth by Colorado Springs Utilities. The Utilities Department and the Saddlehorn Metro District is not responsible or liable for assumptions made by the Developer regarding utility information associated with the proposed development.

REFERENCES

1. Water Line Extension and Service Standards. Colorado Springs Utilities. 2018.
2. Hydraulic Analysis Report Modeling Criteria. Colorado Springs Utilities. 2012.

APPENDIX A
VICINITY MAP



5000 2500 0 5000 10000



ORIGINAL SCALE: 1" = 5000'



VICINITY MAP
SADDLEHORN RANCH
25142.00
01/17/19
SHEET 1 OF 1



J&R ENGINEERING

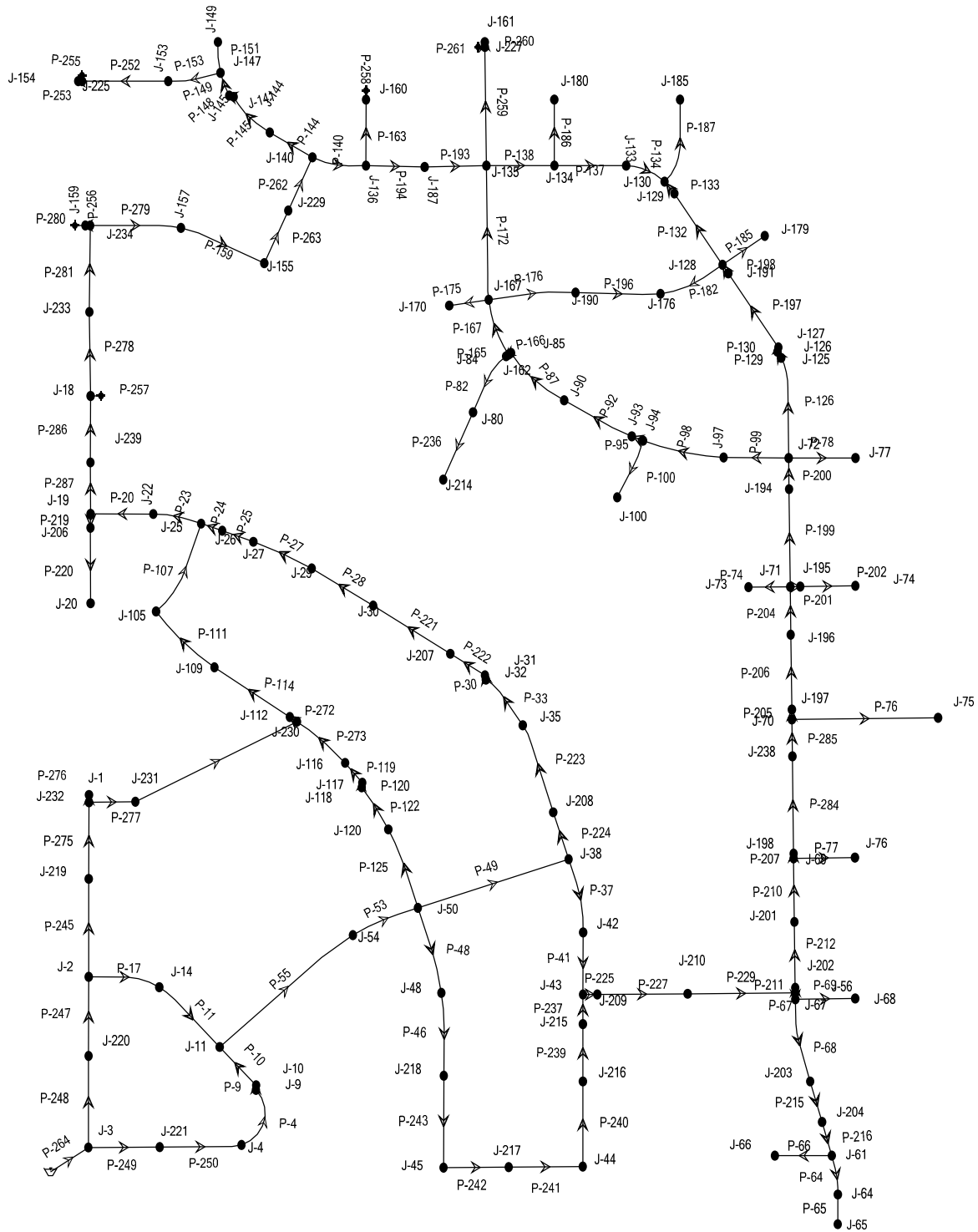
A Westrian Company

Centennial 303-740-9393 • Colorado Springs 719-593-2593
Fort Collins 970-491-9888 • www.jrengineering.com

APPENDIX B
WATER SYSTEM DATA

AVERAGE DAY

85 PSI



AVERAGE DAY

85 PSI

Label	Elevation (ft)	Demand (gpm)	Hydraulic Grade (ft)	Pressure (psi)
J-65	6,663.3	0.00	6,963.9	130.1
J-64	6,665.9	0.83	6,963.9	128.9
J-61	6,670.4	0.00	6,963.9	127.0
J-66	6,671.2	0.83	6,963.9	126.6
J-204	6,673.1	0.83	6,963.9	125.8
J-203	6,677.4	1.24	6,963.9	124.0
J-210	6,684.8	0.00	6,963.9	120.8
J-209	6,685.2	0.00	6,963.9	120.6
J-215	6,687.2	0.83	6,963.9	119.7
J-56	6,688.6	0.00	6,963.9	119.1
J-202	6,688.6	0.83	6,963.9	119.1
J-67	6,690.0	0.00	6,963.9	118.5
J-216	6,692.4	0.83	6,963.9	117.5
J-45	6,694.6	1.24	6,963.9	116.5
J-43	6,695.9	0.00	6,963.9	116.0
J-44	6,696.3	1.65	6,963.9	115.8
J-42	6,697.7	0.83	6,963.9	115.2
J-217	6,698.9	0.41	6,963.9	114.7
J-218	6,700.9	1.65	6,963.9	113.8
J-201	6,701.3	1.24	6,963.9	113.6
J-38	6,702.3	0.00	6,963.9	113.2
J-68	6,702.3	1.24	6,963.9	113.2
J-208	6,706.0	1.65	6,963.9	111.6
J-48	6,706.3	0.83	6,963.9	111.5
J-69	6,710.4	0.00	6,963.9	109.7
J-50	6,710.8	1.65	6,963.9	109.5
J-198	6,711.6	1.24	6,963.9	109.2
J-35	6,713.0	2.48	6,963.9	108.6
J-4	6,713.7	0.83	6,964.0	108.3
J-54	6,715.4	1.24	6,963.9	107.5
J-31	6,717.3	0.00	6,963.9	106.7
J-32	6,717.3	0.00	6,963.9	106.7
J-100	6,717.5	0.83	6,963.9	106.6
J-238	6,717.8	1.24	6,963.9	106.5
J-179	6,717.9	0.83	6,963.9	106.4

AVERAGE DAY

85 PSI

Label	Elevation (ft)	Demand (gpm)	Hydraulic Grade (ft)	Pressure (psi)
J-120	6,719.2	1.24	6,963.9	105.9
J-207	6,719.3	1.65	6,963.9	105.8
J-73	6,719.6	1.24	6,963.9	105.7
J-191	6,719.9	0.83	6,963.9	105.6
J-9	6,721.6	0.00	6,964.0	104.9
J-10	6,721.6	0.83	6,964.0	104.9
J-128	6,721.8	0.00	6,963.9	104.8
J-97	6,722.5	0.83	6,963.9	104.5
J-70	6,722.7	0.00	6,963.9	104.4
J-94	6,723.0	0.00	6,963.9	104.2
J-197	6,723.1	1.24	6,963.9	104.2
J-129	6,723.2	0.83	6,963.9	104.1
J-77	6,723.7	1.24	6,963.9	103.9
J-93	6,723.7	0.83	6,963.9	103.9
J-185	6,724.0	0.83	6,963.9	103.8
J-176	6,724.4	0.41	6,963.9	103.6
J-126	6,726.0	0.00	6,963.9	102.9
J-127	6,726.0	0.00	6,963.9	102.9
J-30	6,726.1	1.24	6,963.9	102.9
J-72	6,726.3	0.83	6,963.9	102.8
J-196	6,726.3	0.83	6,963.9	102.8
J-116	6,726.8	1.65	6,963.9	102.6
J-190	6,726.9	0.83	6,963.9	102.5
J-117	6,727.0	0.00	6,963.9	102.5
J-118	6,727.0	0.00	6,963.9	102.5
J-11	6,727.2	0.83	6,964.0	102.4
J-76	6,727.2	1.24	6,963.9	102.4
J-125	6,727.2	1.65	6,963.9	102.4
J-130	6,727.6	0.41	6,963.9	102.2
J-90	6,727.7	0.83	6,963.9	102.2
J-195	6,728.5	0.83	6,963.9	101.9
J-214	6,729.7	0.41	6,963.9	101.3
J-71	6,730.2	0.00	6,963.9	101.1
J-133	6,730.4	0.41	6,963.9	101.0
J-29	6,731.1	0.83	6,963.9	100.7

AVERAGE DAY

85 PSI

Label	Elevation (ft)	Demand (gpm)	Hydraulic Grade (ft)	Pressure (psi)
J-167	6,731.9	1.24	6,963.9	100.4
J-84	6,732.2	0.00	6,963.9	100.3
J-85	6,732.2	0.00	6,963.9	100.3
J-162	6,732.2	0.00	6,963.9	100.3
J-112	6,732.3	1.65	6,963.9	100.2
J-134	6,733.2	0.83	6,963.9	99.8
J-230	6,733.4	0.00	6,963.9	99.7
J-80	6,733.7	1.24	6,963.9	99.6
J-27	6,734.7	0.83	6,963.9	99.2
J-194	6,735.7	0.83	6,963.9	98.7
J-180	6,736.4	0.41	6,963.9	98.4
J-221	6,736.5	1.24	6,964.0	98.4
J-14	6,737.8	1.24	6,964.0	97.9
J-231	6,738.5	0.00	6,964.0	97.5
J-25	6,739.2	0.00	6,963.9	97.2
J-26	6,739.4	1.24	6,963.9	97.1
J-75	6,740.5	0.83	6,963.9	96.7
J-74	6,740.5	1.24	6,963.9	96.7
J-170	6,740.9	0.83	6,963.9	96.5
J-109	6,743.4	1.65	6,963.9	95.4
J-135	6,743.4	1.65	6,963.9	95.4
J-161	6,744.4	0.83	6,963.9	95.0
J-227	6,744.4	0.00	6,963.9	95.0
J-22	6,744.9	0.83	6,963.9	94.8
J-187	6,746.2	0.41	6,963.9	94.2
J-136	6,748.4	1.24	6,963.9	93.2
J-19	6,749.4	0.00	6,963.9	92.8
J-105	6,749.6	0.83	6,963.9	92.7
J-239	6,750.1	1.24	6,963.9	92.5
J-1	6,750.4	0.83	6,964.0	92.4
J-232	6,750.5	0.00	6,964.0	92.4
J-160	6,750.7	0.41	6,963.9	92.2
J-206	6,751.1	0.41	6,963.9	92.1
J-219	6,751.8	0.83	6,964.0	91.8
J-20	6,752.0	0.83	6,963.9	91.7

AVERAGE DAY

85 PSI

Label	Elevation (ft)	Demand (gpm)	Hydraulic Grade (ft)	Pressure (psi)
J-140	6,752.4	0.00	6,963.9	91.5
J-2	6,755.7	1.24	6,964.0	90.1
J-229	6,756.0	0.83	6,963.9	90.0
J-233	6,756.3	0.00	6,963.9	89.8
J-141	6,756.3	0.83	6,963.9	89.8
J-155	6,756.6	1.24	6,963.9	89.7
J-18	6,757.8	0.83	6,963.9	89.2
J-220	6,761.4	0.83	6,964.0	87.6
J-144	6,762.2	0.00	6,963.9	87.3
J-145	6,762.2	0.00	6,963.9	87.3
J-3	6,762.4	1.65	6,964.0	87.2
J-147	6,763.6	0.83	6,963.9	86.7
J-157	6,764.7	0.83	6,963.9	86.2
J-149	6,767.3	0.00	6,963.9	85.1
J-234	6,768.9	0.00	6,963.9	84.4
J-153	6,769.5	0.83	6,963.9	84.1
J-159	6,770.1	2.07	6,963.9	83.9
J-154	6,774.9	0.83	6,963.9	81.8
J-225	6,774.9	0.00	6,963.9	81.8

AVERAGE DAY

85 PSI

Label	Length (ft)	Diameter (in)	Hazen-Williams C	Flow (Absolute) (gpm)	Velocity (Maximum) (ft/s)	Headloss (ft)
P-55	993	12.0	123.0	63.72	0.18	0.02
P-248	522	8.0	120.0	26.34	0.17	0.01
P-274	1,028	8.0	120.0	16.40	0.10	0.01
P-247	451	8.0	120.0	25.51	0.16	0.01
P-264	257	12.0	123.0	90.45	0.26	0.01
P-49	903	12.0	123.0	44.44	0.13	0.01
P-250	467	12.0	123.0	61.22	0.17	0.01
P-249	407	12.0	123.0	62.45	0.18	0.01
P-245	559	8.0	120.0	18.05	0.12	0.01
P-53	403	12.0	123.0	62.48	0.18	0.01
P-4	387	12.0	123.0	60.39	0.17	0.01
P-275	437	8.0	120.0	17.23	0.11	0.01
P-10	302	12.0	123.0	59.56	0.17	0.00
P-114	514	8.0	120.0	15.89	0.10	0.00
P-111	463	8.0	120.0	14.24	0.09	0.00
P-107	572	8.0	120.0	13.41	0.09	0.00
P-229	614	12.0	123.0	37.32	0.11	0.00
P-48	504	8.0	120.0	12.35	0.08	0.00
P-227	515	12.0	123.0	37.32	0.11	0.00
P-20	358	8.0	120.0	13.90	0.09	0.00
P-286	379	8.0	120.0	11.42	0.07	0.00
P-281	493	8.0	120.0	10.59	0.07	0.00
P-223	528	8.0	120.0	9.57	0.06	0.00
P-46	473	8.0	120.0	11.53	0.07	0.00
P-37	428	12.0	123.0	33.22	0.09	0.00
P-277	265	8.0	120.0	16.40	0.10	0.00
P-23	280	8.0	120.0	14.72	0.09	0.00
P-243	524	8.0	120.0	9.88	0.06	0.00
P-284	555	12.0	123.0	27.82	0.08	0.00
P-41	354	12.0	123.0	32.40	0.09	0.00
P-278	479	8.0	120.0	10.59	0.07	0.00
P-242	371	8.0	120.0	8.64	0.06	0.00
P-159	517	8.0	120.0	7.70	0.05	0.00
P-279	519	8.0	120.0	8.53	0.05	0.00
P-224	282	8.0	120.0	11.22	0.07	0.00

AVERAGE DAY

85 PSI

Label	Length (ft)	Diameter (in)	Hazen-Williams C	Flow (Absolute) (gpm)	Velocity (Maximum) (ft/s)	Headloss (ft)
P-287	293	8.0	120.0	12.66	0.08	0.00
P-212	376	12.0	123.0	31.53	0.09	0.00
P-210	362	12.0	123.0	30.29	0.09	0.00
P-240	485	8.0	120.0	6.57	0.04	0.00
P-221	519	8.0	120.0	5.44	0.03	0.00
P-204	274	12.0	123.0	23.69	0.07	0.00
P-17	413	8.0	120.0	6.22	0.04	0.00
P-199	557	12.0	123.0	20.38	0.06	0.00
P-206	427	12.0	123.0	24.51	0.07	0.00
P-272	49	8.0	120.0	17.54	0.11	0.00
P-241	423	8.0	120.0	8.22	0.05	0.00
P-211	29	12.0	123.0	32.36	0.09	0.00
P-200	177	12.0	123.0	19.56	0.06	0.00
P-98	471	12.0	123.0	11.24	0.03	0.00
P-153	304	8.0	120.0	1.65	0.01	0.00
P-215	241	8.0	120.0	2.48	0.02	0.00
P-239	327	8.0	120.0	5.75	0.04	0.00
P-126	577	8.0	120.0	5.43	0.03	0.00
P-92	437	12.0	123.0	9.58	0.03	0.00
P-205	56	12.0	123.0	25.75	0.07	0.00
P-27	366	8.0	120.0	3.38	0.02	0.00
P-285	210	12.0	123.0	26.58	0.08	0.00
P-207	27	12.0	123.0	29.06	0.08	0.00
P-197	510	8.0	120.0	3.78	0.02	0.00
P-225	81	12.0	123.0	37.32	0.11	0.00
P-33	337	8.0	120.0	7.09	0.05	0.00
P-237	168	8.0	120.0	4.92	0.03	0.00
P-125	479	8.0	120.0	4.03	0.03	0.00
P-222	233	8.0	120.0	7.09	0.05	0.00
P-11	486	8.0	120.0	4.98	0.03	0.00
P-9	26	12.0	123.0	60.39	0.17	0.00
P-24	127	8.0	120.0	1.31	0.01	0.00
P-25	188	8.0	120.0	2.55	0.02	0.00
P-28	409	8.0	120.0	4.20	0.03	0.00
P-30	25	8.0	120.0	7.09	0.05	0.00

AVERAGE DAY

85 PSI

Label	Length (ft)	Diameter (in)	Hazen-Williams C	Flow (Absolute) (gpm)	Velocity (Maximum) (ft/s)	Headloss (ft)
P-64	225	8.0	120.0	0.83	0.01	0.00
P-65	169	8.0	120.0	0.00	0.00	0.00
P-66	324	8.0	120.0	0.83	0.01	0.00
P-67	37	12.0	123.0	4.96	0.01	0.00
P-68	479	12.0	123.0	3.72	0.01	0.00
P-69	342	8.0	120.0	1.24	0.01	0.00
P-74	238	8.0	120.0	1.24	0.01	0.00
P-76	834	8.0	120.0	0.83	0.01	0.00
P-77	350	8.0	120.0	1.24	0.01	0.00
P-78	381	8.0	120.0	1.24	0.01	0.00
P-82	376	8.0	120.0	1.65	0.01	0.00
P-87	410	12.0	123.0	8.76	0.02	0.00
P-95	69	12.0	123.0	10.41	0.03	0.00
P-99	371	12.0	123.0	12.06	0.03	0.00
P-100	356	8.0	120.0	0.83	0.01	0.00
P-119	150	8.0	120.0	2.79	0.02	0.00
P-120	27	8.0	120.0	2.79	0.02	0.00
P-122	284	8.0	120.0	2.79	0.02	0.00
P-129	41	8.0	120.0	3.78	0.02	0.00
P-130	25	8.0	120.0	3.78	0.02	0.00
P-132	490	8.0	120.0	1.98	0.01	0.00
P-133	88	8.0	120.0	1.16	0.01	0.00
P-134	242	8.0	120.0	0.08	0.00	0.00
P-137	410	8.0	120.0	0.50	0.00	0.00
P-138	388	8.0	120.0	1.74	0.01	0.00
P-140	313	12.0	123.0	2.33	0.01	0.00
P-144	282	12.0	123.0	3.30	0.01	0.00
P-145	293	12.0	123.0	2.48	0.01	0.00
P-148	26	8.0	120.0	2.48	0.02	0.00
P-149	140	8.0	120.0	2.48	0.02	0.00
P-151	177	8.0	120.0	0.00	0.00	0.00
P-163	376	8.0	120.0	0.41	0.00	0.00
P-165	17	12.0	123.0	1.65	0.00	0.00
P-166	17	12.0	123.0	8.76	0.02	0.00
P-167	335	12.0	123.0	7.11	0.02	0.00

AVERAGE DAY

85 PSI

Label	Length (ft)	Diameter (in)	Hazen-Williams C	Flow (Absolute) (gpm)	Velocity (Maximum) (ft/s)	Headloss (ft)
P-172	765	12.0	123.0	3.95	0.01	0.00
P-175	228	8.0	120.0	0.83	0.01	0.00
P-176	499	8.0	120.0	1.10	0.01	0.00
P-182	395	8.0	120.0	0.14	0.00	0.00
P-185	292	8.0	120.0	0.83	0.01	0.00
P-186	376	8.0	120.0	0.41	0.00	0.00
P-187	492	8.0	120.0	0.83	0.01	0.00
P-193	352	12.0	123.0	0.27	0.00	0.00
P-194	335	12.0	123.0	0.68	0.00	0.00
P-196	484	8.0	120.0	0.27	0.00	0.00
P-198	59	8.0	120.0	2.95	0.02	0.00
P-201	57	8.0	120.0	2.07	0.01	0.00
P-202	315	8.0	120.0	1.24	0.01	0.00
P-216	200	8.0	120.0	1.65	0.01	0.00
P-219	79	8.0	120.0	1.24	0.01	0.00
P-220	431	8.0	120.0	0.83	0.01	0.00
P-236	420	8.0	120.0	0.41	0.00	0.00
P-252	491	8.0	120.0	0.83	0.01	0.00
P-253	22	8.0	120.0	0.83	0.01	0.00
P-255	33	6.0	130.0	0.00	0.00	0.00
P-256	60	6.0	130.0	0.00	0.00	0.00
P-257	60	6.0	130.0	0.00	0.00	0.00
P-258	52	6.0	130.0	0.00	0.00	0.00
P-259	677	8.0	120.0	0.83	0.01	0.00
P-260	28	8.0	120.0	0.83	0.01	0.00
P-261	38	6.0	130.0	0.00	0.00	0.00
P-262	333	12.0	120.0	5.64	0.02	0.00
P-263	330	12.0	120.0	6.46	0.02	0.00
P-273	363	8.0	120.0	1.14	0.01	0.00
P-276	42	8.0	120.0	0.83	0.01	0.00
P-280	28	8.0	120.0	2.07	0.01	0.00

MAX DAY

85 PSI

Label	Elevation (ft)	Demand (gpm)	Hydraulic Grade (ft)	Pressure (psi)
J-65	6,663.3	0.00	6,963.5	129.9
J-64	6,665.9	2.19	6,963.5	128.8
J-61	6,670.4	0.00	6,963.5	126.8
J-66	6,671.2	2.19	6,963.5	126.5
J-204	6,673.1	2.19	6,963.5	125.7
J-203	6,677.4	3.28	6,963.5	123.8
J-210	6,684.8	0.00	6,963.6	120.6
J-209	6,685.2	0.00	6,963.6	120.4
J-215	6,687.2	2.19	6,963.6	119.6
J-56	6,688.6	0.00	6,963.5	119.0
J-202	6,688.6	2.19	6,963.5	119.0
J-67	6,690.0	0.00	6,963.5	118.3
J-216	6,692.4	2.19	6,963.6	117.3
J-45	6,694.6	3.28	6,963.6	116.4
J-43	6,695.9	0.00	6,963.6	115.8
J-44	6,696.3	4.38	6,963.6	115.6
J-42	6,697.7	2.19	6,963.6	115.0
J-217	6,698.9	1.09	6,963.6	114.5
J-218	6,700.9	4.38	6,963.6	113.7
J-201	6,701.3	3.28	6,963.5	113.5
J-38	6,702.3	0.00	6,963.6	113.1
J-68	6,702.3	3.28	6,963.5	113.0
J-208	6,706.0	4.38	6,963.6	111.4
J-48	6,706.3	2.19	6,963.6	111.3
J-69	6,710.4	0.00	6,963.5	109.5
J-50	6,710.8	4.38	6,963.7	109.4
J-198	6,711.6	3.28	6,963.5	109.0
J-35	6,713.0	6.57	6,963.6	108.4
J-4	6,713.7	2.19	6,963.9	108.2
J-54	6,715.4	3.28	6,963.7	107.4
J-32	6,717.3	0.00	6,963.6	106.6
J-31	6,717.3	0.00	6,963.6	106.6
J-100	6,717.5	2.19	6,963.5	106.4
J-238	6,717.8	3.28	6,963.5	106.3
J-179	6,717.9	2.19	6,963.5	106.2

MAX DAY

85 PSI

Label	Elevation (ft)	Demand (gpm)	Hydraulic Grade (ft)	Pressure (psi)
J-120	6,719.2	3.28	6,963.6	105.8
J-207	6,719.3	4.38	6,963.6	105.7
J-73	6,719.6	3.28	6,963.5	105.5
J-191	6,719.9	2.19	6,963.5	105.4
J-9	6,721.6	0.00	6,963.8	104.8
J-10	6,721.6	2.19	6,963.8	104.8
J-128	6,721.8	0.00	6,963.5	104.6
J-97	6,722.5	2.19	6,963.5	104.3
J-70	6,722.7	0.00	6,963.5	104.2
J-94	6,723.0	0.00	6,963.5	104.0
J-197	6,723.1	3.28	6,963.5	104.0
J-129	6,723.2	2.19	6,963.5	104.0
J-77	6,723.7	3.28	6,963.5	103.7
J-93	6,723.7	2.19	6,963.5	103.7
J-185	6,724.0	2.19	6,963.5	103.6
J-176	6,724.4	1.09	6,963.5	103.4
J-30	6,726.1	3.28	6,963.6	102.7
J-126	6,726.0	0.00	6,963.5	102.7
J-127	6,726.0	0.00	6,963.5	102.7
J-72	6,726.3	2.19	6,963.5	102.6
J-196	6,726.3	2.19	6,963.5	102.6
J-116	6,726.8	4.38	6,963.6	102.5
J-118	6,727.0	0.00	6,963.6	102.4
J-117	6,727.0	0.00	6,963.6	102.4
J-11	6,727.2	2.19	6,963.8	102.4
J-190	6,726.9	2.19	6,963.5	102.4
J-76	6,727.2	3.28	6,963.5	102.2
J-125	6,727.2	4.38	6,963.5	102.2
J-130	6,727.6	1.09	6,963.5	102.0
J-90	6,727.7	2.19	6,963.5	102.0
J-195	6,728.5	2.19	6,963.5	101.7
J-214	6,729.7	1.09	6,963.5	101.1
J-71	6,730.2	0.00	6,963.5	100.9
J-133	6,730.4	1.09	6,963.5	100.8
J-29	6,731.1	2.19	6,963.6	100.6

MAX DAY

85 PSI

Label	Elevation (ft)	Demand (gpm)	Hydraulic Grade (ft)	Pressure (psi)
J-167	6,731.9	3.28	6,963.5	100.2
J-112	6,732.3	4.38	6,963.6	100.1
J-84	6,732.2	0.00	6,963.5	100.1
J-85	6,732.2	0.00	6,963.5	100.1
J-162	6,732.2	0.00	6,963.5	100.1
J-134	6,733.2	2.19	6,963.5	99.6
J-230	6,733.4	0.00	6,963.6	99.6
J-80	6,733.7	3.28	6,963.5	99.4
J-27	6,734.7	2.19	6,963.6	99.0
J-194	6,735.7	2.19	6,963.5	98.5
J-221	6,736.5	3.28	6,963.9	98.4
J-180	6,736.4	1.09	6,963.5	98.2
J-14	6,737.8	3.28	6,963.8	97.8
J-231	6,738.5	0.00	6,963.7	97.4
J-25	6,739.2	0.00	6,963.6	97.1
J-26	6,739.4	3.28	6,963.6	97.0
J-75	6,740.5	2.19	6,963.5	96.5
J-74	6,740.5	3.28	6,963.5	96.5
J-170	6,740.9	2.19	6,963.5	96.3
J-109	6,743.4	4.38	6,963.6	95.3
J-135	6,743.4	4.38	6,963.5	95.2
J-161	6,744.4	2.19	6,963.5	94.8
J-227	6,744.4	0.00	6,963.5	94.8
J-22	6,744.9	2.19	6,963.6	94.6
J-187	6,746.2	1.09	6,963.5	94.0
J-136	6,748.4	3.28	6,963.5	93.0
J-19	6,749.4	0.00	6,963.5	92.6
J-105	6,749.6	2.19	6,963.6	92.6
J-239	6,750.1	3.28	6,963.5	92.3
J-1	6,750.4	2.19	6,963.7	92.3
J-232	6,750.5	0.00	6,963.7	92.3
J-160	6,750.7	1.09	6,963.5	92.1
J-206	6,751.1	1.09	6,963.5	91.9
J-219	6,751.8	2.19	6,963.8	91.7
J-20	6,752.0	2.19	6,963.5	91.5

MAX DAY

85 PSI

Label	Elevation (ft)	Demand (gpm)	Hydraulic Grade (ft)	Pressure (psi)
J-140	6,752.4	0.00	6,963.5	91.3
J-2	6,755.7	3.28	6,963.8	90.0
J-229	6,756.0	2.19	6,963.5	89.8
J-233	6,756.3	0.00	6,963.5	89.7
J-141	6,756.3	2.19	6,963.5	89.6
J-155	6,756.6	3.28	6,963.5	89.5
J-18	6,757.8	2.19	6,963.5	89.0
J-220	6,761.4	2.19	6,963.9	87.6
J-3	6,762.4	4.38	6,963.9	87.2
J-144	6,762.2	0.00	6,963.5	87.1
J-145	6,762.2	0.00	6,963.5	87.1
J-147	6,763.6	2.19	6,963.5	86.5
J-157	6,764.7	2.19	6,963.5	86.0
J-149	6,767.3	0.00	6,963.5	84.9
J-234	6,768.9	0.00	6,963.5	84.2
J-153	6,769.5	2.19	6,963.5	83.9
J-159	6,770.1	5.47	6,963.5	83.7
J-154	6,774.9	2.19	6,963.5	81.6
J-225	6,774.9	0.00	6,963.5	81.6

MAX DAY

85 PSI

Label	Length (ft)	Diameter (in)	Hazen-Williams C	Flow (Absolute) (gpm)	Velocity (Maximum) (ft/s)	Headloss (ft)
P-55	993	12.0	123.0	168.87	0.48	0.10
P-248	522	8.0	120.0	69.81	0.45	0.08
P-247	451	8.0	120.0	67.62	0.43	0.07
P-274	1,028	8.0	120.0	43.47	0.28	0.07
P-264	257	12.0	123.0	239.70	0.68	0.05
P-49	903	12.0	123.0	117.79	0.33	0.05
P-250	467	12.0	123.0	162.23	0.46	0.05
P-245	559	8.0	120.0	47.85	0.31	0.04
P-53	403	12.0	123.0	165.58	0.47	0.04
P-249	407	12.0	123.0	165.51	0.47	0.04
P-4	387	12.0	123.0	160.04	0.45	0.04
P-114	514	8.0	120.0	42.11	0.27	0.03
P-275	437	8.0	120.0	45.66	0.29	0.03
P-10	302	12.0	123.0	157.85	0.45	0.03
P-107	572	8.0	120.0	35.54	0.23	0.02
P-229	614	12.0	123.0	98.89	0.28	0.02
P-111	463	8.0	120.0	37.73	0.24	0.02
P-227	515	12.0	123.0	98.89	0.28	0.02
P-48	504	8.0	120.0	32.74	0.21	0.02
P-277	265	8.0	120.0	43.47	0.28	0.02
P-20	358	8.0	120.0	36.83	0.24	0.02
P-46	473	8.0	120.0	30.55	0.20	0.02
P-23	280	8.0	120.0	39.02	0.25	0.01
P-278	479	8.0	120.0	28.07	0.18	0.01
P-37	428	12.0	123.0	88.04	0.25	0.01
P-281	493	8.0	120.0	28.07	0.18	0.01
P-243	524	8.0	120.0	26.17	0.17	0.01
P-286	379	8.0	120.0	30.26	0.19	0.01
P-223	528	8.0	120.0	25.37	0.16	0.01
P-284	555	12.0	123.0	73.72	0.21	0.01
P-287	293	8.0	120.0	33.55	0.21	0.01
P-212	376	12.0	123.0	83.57	0.24	0.01
P-41	354	12.0	123.0	85.85	0.24	0.01
P-279	519	8.0	120.0	22.60	0.14	0.01
P-224	282	8.0	120.0	29.74	0.19	0.01

MAX DAY

85 PSI

Label	Length (ft)	Diameter (in)	Hazen-Williams C	Flow (Absolute) (gpm)	Velocity (Maximum) (ft/s)	Headloss (ft)
P-210	362	12.0	123.0	80.29	0.23	0.01
P-159	517	8.0	120.0	20.41	0.13	0.01
P-206	427	12.0	123.0	64.96	0.18	0.01
P-241	423	8.0	120.0	21.80	0.14	0.01
P-242	371	8.0	120.0	22.89	0.15	0.01
P-199	557	12.0	123.0	54.02	0.15	0.01
P-240	485	8.0	120.0	17.42	0.11	0.01
P-33	337	8.0	120.0	18.80	0.12	0.00
P-126	577	8.0	120.0	14.39	0.09	0.00
P-17	413	8.0	120.0	16.49	0.11	0.00
P-221	519	8.0	120.0	14.42	0.09	0.00
P-285	210	12.0	123.0	70.44	0.20	0.00
P-204	274	12.0	123.0	62.78	0.18	0.00
P-225	81	12.0	123.0	98.89	0.28	0.00
P-11	486	8.0	120.0	13.20	0.08	0.00
P-272	49	8.0	120.0	46.49	0.30	0.00
P-239	327	8.0	120.0	15.23	0.10	0.00
P-222	233	8.0	120.0	18.80	0.12	0.00
P-9	26	12.0	123.0	160.04	0.45	0.00
P-125	479	8.0	120.0	10.68	0.07	0.00
P-200	177	12.0	123.0	51.83	0.15	0.00
P-98	471	12.0	123.0	29.78	0.08	0.00
P-28	409	8.0	120.0	11.14	0.07	0.00
P-197	510	8.0	120.0	10.01	0.06	0.00
P-92	437	12.0	123.0	25.41	0.07	0.00
P-99	371	12.0	123.0	31.97	0.09	0.00
P-27	366	8.0	120.0	8.95	0.06	0.00
P-211	29	12.0	123.0	85.76	0.24	0.00
P-205	56	12.0	123.0	68.25	0.19	0.00
P-207	27	12.0	123.0	77.00	0.22	0.00
P-87	410	12.0	123.0	23.22	0.07	0.00
P-237	168	8.0	120.0	13.04	0.08	0.00
P-172	765	12.0	123.0	10.46	0.03	0.00
P-176	499	8.0	120.0	2.91	0.02	0.00
P-138	388	8.0	120.0	4.60	0.03	0.00

MAX DAY

85 PSI

Label	Length (ft)	Diameter (in)	Hazen-Williams C	Flow (Absolute) (gpm)	Velocity (Maximum) (ft/s)	Headloss (ft)
P-122	284	8.0	120.0	7.40	0.05	0.00
P-153	304	8.0	120.0	4.38	0.03	0.00
P-129	41	8.0	120.0	10.01	0.06	0.00
P-132	490	8.0	120.0	5.25	0.03	0.00
P-167	335	12.0	123.0	18.84	0.05	0.00
P-259	677	8.0	120.0	2.19	0.01	0.00
P-30	25	8.0	120.0	18.80	0.12	0.00
P-215	241	8.0	120.0	6.57	0.04	0.00
P-120	27	8.0	120.0	7.40	0.05	0.00
P-82	376	8.0	120.0	4.38	0.03	0.00
P-95	69	12.0	123.0	27.60	0.08	0.00
P-148	26	8.0	120.0	6.57	0.04	0.00
P-100	356	8.0	120.0	2.19	0.01	0.00
P-77	350	8.0	120.0	3.28	0.02	0.00
P-202	315	8.0	120.0	3.28	0.02	0.00
P-273	363	8.0	120.0	3.02	0.02	0.00
P-69	342	8.0	120.0	3.28	0.02	0.00
P-280	28	8.0	120.0	5.48	0.03	0.00
P-262	333	12.0	120.0	14.94	0.04	0.00
P-263	330	12.0	120.0	17.12	0.05	0.00
P-198	59	8.0	120.0	7.82	0.05	0.00
P-25	188	8.0	120.0	6.76	0.04	0.00
P-68	479	12.0	123.0	9.85	0.03	0.00
P-24	127	8.0	120.0	3.48	0.02	0.00
P-64	225	8.0	120.0	2.19	0.01	0.00
P-65	169	8.0	120.0	0.00	0.00	0.00
P-66	324	8.0	120.0	2.19	0.01	0.00
P-67	37	12.0	123.0	13.13	0.04	0.00
P-74	238	8.0	120.0	3.28	0.02	0.00
P-76	834	8.0	120.0	2.19	0.01	0.00
P-78	381	8.0	120.0	3.28	0.02	0.00
P-119	150	8.0	120.0	7.40	0.05	0.00
P-130	25	8.0	120.0	10.01	0.06	0.00
P-133	88	8.0	120.0	3.06	0.02	0.00
P-134	242	8.0	120.0	0.22	0.00	0.00

MAX DAY

85 PSI

Label	Length (ft)	Diameter (in)	Hazen-Williams C	Flow (Absolute) (gpm)	Velocity (Maximum) (ft/s)	Headloss (ft)
P-137	410	8.0	120.0	1.31	0.01	0.00
P-140	313	12.0	123.0	6.17	0.02	0.00
P-144	282	12.0	123.0	8.76	0.02	0.00
P-145	293	12.0	123.0	6.57	0.02	0.00
P-149	140	8.0	120.0	6.57	0.04	0.00
P-151	177	8.0	120.0	0.00	0.00	0.00
P-163	376	8.0	120.0	1.09	0.01	0.00
P-165	17	12.0	123.0	4.38	0.01	0.00
P-166	17	12.0	123.0	23.22	0.07	0.00
P-175	228	8.0	120.0	2.19	0.01	0.00
P-182	395	8.0	120.0	0.38	0.00	0.00
P-185	292	8.0	120.0	2.19	0.01	0.00
P-186	376	8.0	120.0	1.09	0.01	0.00
P-187	492	8.0	120.0	2.19	0.01	0.00
P-193	352	12.0	123.0	0.70	0.00	0.00
P-194	335	12.0	123.0	1.80	0.01	0.00
P-196	484	8.0	120.0	0.72	0.00	0.00
P-201	57	8.0	120.0	5.47	0.03	0.00
P-216	200	8.0	120.0	4.38	0.03	0.00
P-219	79	8.0	120.0	3.28	0.02	0.00
P-220	431	8.0	120.0	2.19	0.01	0.00
P-236	420	8.0	120.0	1.09	0.01	0.00
P-252	491	8.0	120.0	2.19	0.01	0.00
P-253	22	8.0	120.0	2.19	0.01	0.00
P-255	33	6.0	130.0	0.01	0.00	0.00
P-256	60	6.0	130.0	0.00	0.00	0.00
P-257	60	6.0	130.0	0.00	0.00	0.00
P-258	52	6.0	130.0	0.00	0.00	0.00
P-260	28	8.0	120.0	2.19	0.01	0.00
P-261	38	6.0	130.0	0.00	0.00	0.00
P-276	42	8.0	120.0	2.19	0.01	0.00

Label	Elevation (ft)	Demand (gpm)	Hydraulic Grade (ft)	Pressure (psi)
J-65	6,663.3	0.00	6,939.9	119.7
J-64	6,665.9	2.19	6,939.9	118.5
J-61	6,670.4	0.00	6,939.9	116.6
J-66	6,671.2	2.19	6,939.9	116.2
J-204	6,673.1	2.19	6,939.9	115.4
J-203	6,677.4	3.28	6,939.9	113.6
J-209	6,685.2	0.00	6,943.7	111.8
J-210	6,684.8	0.00	6,942.0	111.3
J-215	6,687.2	2.19	6,944.2	111.2
J-216	6,692.4	2.19	6,944.7	109.1
J-45	6,694.6	3.28	6,946.5	109.0
J-56	6,688.6	0.00	6,939.9	108.7
J-202	6,688.6	2.19	6,939.8	108.7
J-67	6,690.0	0.00	6,939.9	108.1
J-44	6,696.3	4.38	6,945.3	107.7
J-43	6,695.9	0.00	6,944.0	107.3
J-42	6,697.7	2.19	6,944.8	106.9
J-217	6,698.9	1.09	6,945.9	106.9
J-218	6,700.9	4.38	6,947.2	106.6
J-4	6,713.7	2.19	6,958.4	105.9
J-38	6,702.3	0.00	6,945.8	105.3
J-48	6,706.3	2.19	6,947.9	104.5
J-208	6,706.0	4.38	6,945.5	103.6
J-50	6,710.8	4.38	6,948.7	102.9
J-68	6,702.3	3.28	6,939.9	102.8
J-201	6,701.3	3.28	6,938.5	102.6
J-54	6,715.4	3.28	6,950.7	101.8
J-9	6,721.6	0.00	6,956.9	101.8
J-10	6,721.6	2.19	6,956.8	101.7
J-35	6,713.0	6.57	6,945.1	100.4
J-120	6,719.2	3.28	6,948.7	99.3
J-11	6,727.2	2.19	6,955.5	98.8
J-32	6,717.3	0.00	6,944.8	98.4
J-31	6,717.3	0.00	6,944.8	98.4
J-69	6,710.4	0.00	6,937.3	98.2
J-198	6,711.6	3.28	6,937.2	97.6

Label	Elevation (ft)	Demand (gpm)	Hydraulic Grade (ft)	Pressure (psi)
J-207	6,719.3	4.38	6,944.6	97.5
J-221	6,736.5	3.28	6,960.3	96.8
J-116	6,726.8	4.38	6,948.7	96.0
J-118	6,727.0	0.00	6,948.7	95.9
J-117	6,727.0	0.00	6,948.7	95.9
J-30	6,726.1	3.28	6,944.1	94.3
J-14	6,737.8	3.28	6,955.8	94.3
J-238	6,717.8	3.28	6,935.4	94.1
J-112	6,732.3	4.38	6,948.5	93.5
J-230	6,733.4	0.00	6,948.7	93.1
J-231	6,738.5	0.00	6,952.0	92.4
J-29	6,731.1	2.19	6,943.8	92.0
J-73	6,719.6	3.28	6,932.3	92.0
J-70	6,722.7	0.00	6,934.7	91.7
J-197	6,723.1	3.28	6,934.5	91.5
J-100	6,717.5	2.19	6,928.6	91.3
J-76	6,727.2	3.28	6,937.3	90.9
J-179	6,717.9	2.19	6,926.9	90.4
J-27	6,734.7	2.19	6,943.6	90.4
J-191	6,719.9	2.19	6,927.1	89.6
J-97	6,722.5	2.19	6,929.3	89.5
J-196	6,726.3	2.19	6,933.2	89.5
J-77	6,723.7	3.28	6,930.0	89.2
J-94	6,723.0	0.00	6,928.6	88.9
J-128	6,721.8	0.00	6,926.9	88.8
J-93	6,723.7	2.19	6,928.5	88.6
J-25	6,739.2	0.00	6,943.3	88.3
J-26	6,739.4	3.28	6,943.4	88.3
J-195	6,728.5	2.19	6,932.3	88.2
J-72	6,726.3	2.19	6,930.0	88.1
J-109	6,743.4	4.38	6,946.8	88.0
J-129	6,723.2	2.19	6,926.4	87.9
J-176	6,724.4	1.09	6,926.8	87.6
J-219	6,751.8	2.19	6,954.2	87.6
J-1	6,750.4	2.19	6,952.8	87.6
J-126	6,726.0	0.00	6,928.4	87.6

Label	Elevation (ft)	Demand (gpm)	Hydraulic Grade (ft)	Pressure (psi)
J-127	6,726.0	0.00	6,928.3	87.5
J-232	6,750.5	0.00	6,952.8	87.5
J-185	6,724.0	2.19	6,926.3	87.5
J-71	6,730.2	0.00	6,932.3	87.4
J-125	6,727.2	4.38	6,928.5	87.1
J-2	6,755.7	3.28	6,956.0	86.7
J-90	6,727.7	2.19	6,927.8	86.6
J-190	6,726.9	2.19	6,926.7	86.4
J-3	6,762.4	4.38	6,962.0	86.4
J-130	6,727.6	1.09	6,926.3	85.9
J-214	6,729.7	1.09	6,927.1	85.4
J-220	6,761.4	2.19	6,958.8	85.4
J-22	6,744.9	2.19	6,941.5	85.1
J-105	6,749.6	2.19	6,945.2	84.6
J-133	6,730.4	1.09	6,926.0	84.6
J-85	6,732.2	0.00	6,927.1	84.3
J-84	6,732.2	0.00	6,927.1	84.3
J-162	6,732.2	0.00	6,927.1	84.3
J-194	6,735.7	2.19	6,930.5	84.3
J-167	6,731.9	3.28	6,926.6	84.2
J-75	6,740.5	2.19	6,934.7	84.0
J-80	6,733.7	3.28	6,927.1	83.7
J-134	6,733.2	2.19	6,925.5	83.2
J-74	6,740.5	3.28	6,932.3	83.0
J-19	6,749.4	0.00	6,939.2	82.1
J-180	6,736.4	1.09	6,925.5	81.8
J-206	6,751.1	1.09	6,939.2	81.4
J-239	6,750.1	3.28	6,937.4	81.0
J-20	6,752.0	2.19	6,939.2	81.0
J-170	6,740.9	2.19	6,926.6	80.3
J-135	6,743.4	4.38	6,925.1	78.6
J-161	6,744.4	2.19	6,925.1	78.2
J-227	6,744.4	0.00	6,925.1	78.2
J-187	6,746.2	1.09	6,924.1	77.0
J-18	6,757.8	2.19	6,935.0	76.7
J-233	6,756.3	0.00	6,932.1	76.1

Label	Elevation (ft)	Demand (gpm)	Hydraulic Grade (ft)	Pressure (psi)
J-136	6,748.4	3.28	6,923.1	75.6
J-160	6,750.7	1.09	6,923.1	74.6
J-140	6,752.4	0.00	6,922.2	73.5
J-229	6,756.0	2.19	6,922.5	72.0
J-155	6,756.6	3.28	6,922.8	71.9
J-141	6,756.3	2.19	6,920.5	71.1
J-157	6,764.7	2.19	6,925.9	69.7
J-234	6,768.9	0.00	6,929.0	69.3
J-159	6,770.1	5.47	6,929.0	68.8
J-144	6,762.2	0.00	6,918.8	67.7
J-145	6,762.2	0.00	6,917.6	67.2
J-147	6,763.6	2.19	6,911.3	63.9
J-149	6,767.3	0.00	6,911.3	62.3
J-153	6,769.5	2.19	6,897.6	55.4
J-154	6,774.9	2.19	6,875.5	43.5
J-225	6,774.9	0.00	6,875.5	43.5

Label	Length (ft)	Diameter (in)	Hazen-Williams C	Flow (Absolute) (gpm)	Velocity (Maximum) (ft/s)	Headloss (ft)
P-255	33	6.0	130.0	1,500.00	17.02	23.70
P-252	491	8.0	120.0	1,502.19	9.59	22.10
P-153	304	8.0	120.0	1,504.38	9.60	13.70
P-149	140	8.0	120.0	1,506.57	9.62	6.33
P-55	993	12.0	123.0	1,352.20	3.84	4.88
P-274	1,028	8.0	120.0	360.13	2.30	3.29
P-248	522	8.0	120.0	511.95	3.27	3.20
P-279	519	8.0	120.0	508.79	3.25	3.14
P-159	517	8.0	120.0	506.60	3.23	3.11
P-281	493	8.0	120.0	514.27	3.28	3.05
P-278	479	8.0	120.0	514.27	3.28	2.96
P-49	903	12.0	123.0	1,077.59	3.06	2.91
P-247	451	8.0	120.0	509.76	3.25	2.74
P-286	379	8.0	120.0	516.45	3.30	2.36
P-20	358	8.0	120.0	523.02	3.34	2.28
P-229	614	12.0	123.0	1,112.69	3.16	2.10
P-264	257	12.0	123.0	1,739.68	4.94	2.01
P-53	403	12.0	123.0	1,348.91	3.83	1.97
P-250	467	12.0	123.0	1,220.07	3.46	1.90
P-107	572	8.0	120.0	366.19	2.34	1.88
P-287	293	8.0	120.0	519.74	3.32	1.85
P-245	559	8.0	120.0	364.51	2.33	1.83
P-284	555	12.0	123.0	1,087.52	3.09	1.82
P-23	280	8.0	120.0	525.21	3.35	1.80
P-199	557	12.0	123.0	1,067.82	3.03	1.77
P-227	515	12.0	123.0	1,112.69	3.16	1.76
P-145	293	12.0	123.0	1,506.57	4.27	1.75
P-114	514	8.0	120.0	372.75	2.38	1.75
P-144	282	12.0	123.0	1,508.76	4.28	1.70
P-249	407	12.0	123.0	1,223.36	3.47	1.66
P-4	387	12.0	123.0	1,217.88	3.45	1.57
P-111	463	8.0	120.0	368.38	2.35	1.54
P-172	765	12.0	123.0	817.86	2.32	1.48
P-126	577	8.0	120.0	316.43	2.02	1.45
P-275	437	8.0	120.0	362.32	2.31	1.41
P-206	427	12.0	123.0	1,078.76	3.06	1.38

Label	Length (ft)	Diameter (in)	Hazen-Williams C	Flow (Absolute) (gpm)	Velocity (Maximum) (ft/s)	Headloss (ft)
P-212	376	12.0	123.0	1,097.37	3.11	1.25
P-197	510	8.0	120.0	312.05	1.99	1.25
P-10	302	12.0	123.0	1,215.70	3.45	1.22
P-210	362	12.0	123.0	1,094.09	3.10	1.20
P-148	26	8.0	120.0	1,506.57	9.62	1.17
P-193	352	12.0	123.0	1,013.10	2.87	1.01
P-37	428	12.0	123.0	892.30	2.53	0.97
P-194	335	12.0	123.0	1,012.00	2.87	0.96
P-140	313	12.0	123.0	1,007.62	2.86	0.89
P-204	274	12.0	123.0	1,076.57	3.05	0.88
P-277	265	8.0	120.0	360.13	2.30	0.85
P-41	354	12.0	123.0	890.11	2.53	0.80
P-48	504	8.0	120.0	242.28	1.55	0.77
P-243	524	8.0	120.0	235.71	1.50	0.76
P-98	471	12.0	123.0	741.54	2.10	0.76
P-46	473	8.0	120.0	240.09	1.53	0.71
P-92	437	12.0	123.0	737.16	2.09	0.70
P-285	210	12.0	123.0	1,084.24	3.08	0.69
P-240	485	8.0	120.0	226.95	1.45	0.66
P-87	410	12.0	123.0	734.97	2.08	0.65
P-99	371	12.0	123.0	743.73	2.11	0.60
P-241	423	8.0	120.0	231.33	1.48	0.60
P-132	490	8.0	120.0	211.66	1.35	0.59
P-200	177	12.0	123.0	1,065.63	3.02	0.56
P-242	371	8.0	120.0	232.43	1.48	0.53
P-167	335	12.0	123.0	730.59	2.07	0.53
P-223	528	8.0	120.0	180.91	1.15	0.47
P-137	410	8.0	120.0	205.09	1.31	0.46
P-239	327	8.0	120.0	224.76	1.43	0.44
P-138	388	8.0	120.0	201.81	1.29	0.42
P-221	519	8.0	120.0	169.97	1.08	0.41
P-28	409	8.0	120.0	166.68	1.06	0.31
P-33	337	8.0	120.0	174.34	1.11	0.28
P-225	81	12.0	123.0	1,112.69	3.16	0.28
P-134	242	8.0	120.0	206.18	1.32	0.27
P-27	366	8.0	120.0	164.49	1.05	0.27

Label	Length (ft)	Diameter (in)	Hazen-Williams C	Flow (Absolute) (gpm)	Velocity (Maximum) (ft/s)	Headloss (ft)
P-262	333	12.0	120.0	501.13	1.42	0.27
P-263	330	12.0	120.0	503.32	1.43	0.27
P-11	486	8.0	120.0	138.69	0.89	0.27
P-224	282	8.0	120.0	185.29	1.18	0.26
P-17	413	8.0	120.0	141.97	0.91	0.24
P-237	168	8.0	120.0	222.58	1.42	0.22
P-222	233	8.0	120.0	174.34	1.11	0.19
P-205	56	12.0	123.0	1,082.05	3.07	0.18
P-272	49	8.0	120.0	377.13	2.41	0.17
P-198	59	8.0	120.0	309.86	1.98	0.14
P-25	188	8.0	120.0	162.31	1.04	0.14
P-196	484	8.0	120.0	94.92	0.61	0.13
P-176	499	8.0	120.0	92.73	0.59	0.13
P-95	69	12.0	123.0	739.35	2.10	0.11
P-182	395	8.0	120.0	96.02	0.61	0.11
P-9	26	12.0	123.0	1,217.88	3.45	0.11
P-133	88	8.0	120.0	209.47	1.34	0.10
P-129	41	8.0	120.0	312.05	1.99	0.10
P-211	29	12.0	123.0	1,099.56	3.12	0.10
P-24	127	8.0	120.0	159.02	1.02	0.09
P-207	27	12.0	123.0	1,090.80	3.09	0.09
P-130	25	8.0	120.0	312.05	1.99	0.06
P-166	17	12.0	123.0	734.97	2.08	0.03
P-30	25	8.0	120.0	174.34	1.11	0.02
P-125	479	8.0	120.0	24.67	0.16	0.01
P-122	284	8.0	120.0	21.38	0.14	0.00
P-273	363	8.0	120.0	17.00	0.11	0.00
P-119	150	8.0	120.0	21.38	0.14	0.00
P-215	241	8.0	120.0	6.57	0.04	0.00
P-120	27	8.0	120.0	21.38	0.14	0.00
P-82	376	8.0	120.0	4.38	0.03	0.00
P-216	200	8.0	120.0	4.38	0.03	0.00
P-219	79	8.0	120.0	3.28	0.02	0.00
P-64	225	8.0	120.0	2.19	0.01	0.00
P-65	169	8.0	120.0	0.00	0.00	0.00
P-66	324	8.0	120.0	2.19	0.01	0.00

Label	Length (ft)	Diameter (in)	Hazen-Williams C	Flow (Absolute) (gpm)	Velocity (Maximum) (ft/s)	Headloss (ft)
P-67	37	12.0	123.0	13.13	0.04	0.00
P-68	479	12.0	123.0	9.85	0.03	0.00
P-69	342	8.0	120.0	3.28	0.02	0.00
P-74	238	8.0	120.0	3.28	0.02	0.00
P-76	834	8.0	120.0	2.19	0.01	0.00
P-77	350	8.0	120.0	3.28	0.02	0.00
P-78	381	8.0	120.0	3.28	0.02	0.00
P-100	356	8.0	120.0	2.19	0.01	0.00
P-151	177	8.0	120.0	0.00	0.00	0.00
P-163	376	8.0	120.0	1.09	0.01	0.00
P-165	17	12.0	123.0	4.38	0.01	0.00
P-175	228	8.0	120.0	2.19	0.01	0.00
P-185	292	8.0	120.0	2.19	0.01	0.00
P-186	376	8.0	120.0	1.09	0.01	0.00
P-187	492	8.0	120.0	2.19	0.01	0.00
P-201	57	8.0	120.0	5.47	0.03	0.00
P-202	315	8.0	120.0	3.28	0.02	0.00
P-220	431	8.0	120.0	2.19	0.01	0.00
P-236	420	8.0	120.0	1.09	0.01	0.00
P-253	22	8.0	120.0	2.19	0.01	0.00
P-256	60	6.0	130.0	0.00	0.00	0.00
P-257	60	6.0	130.0	0.00	0.00	0.00
P-258	52	6.0	130.0	0.00	0.00	0.00
P-259	677	8.0	120.0	2.19	0.01	0.00
P-260	28	8.0	120.0	2.19	0.01	0.00
P-261	38	6.0	130.0	0.00	0.00	0.00
P-276	42	8.0	120.0	2.19	0.01	0.00
P-280	28	8.0	120.0	5.47	0.03	0.00

Label	Elevation (ft)	Demand (gpm)	Hydraulic Grade (ft)	Pressure (psi)
J-65	6,663.3	0.00	6,942.1	120.6
J-64	6,665.9	2.19	6,942.1	119.5
J-61	6,670.4	0.00	6,942.1	117.6
J-66	6,671.2	2.19	6,942.1	117.2
J-204	6,673.1	2.19	6,942.1	116.4
J-203	6,677.4	3.28	6,942.1	114.5
J-209	6,685.2	0.00	6,944.8	112.3
J-210	6,684.8	0.00	6,943.6	112.0
J-215	6,687.2	2.19	6,945.2	111.6
J-56	6,688.6	0.00	6,942.1	109.7
J-202	6,688.6	2.19	6,942.0	109.7
J-216	6,692.4	2.19	6,945.5	109.5
J-45	6,694.6	3.28	6,947.0	109.2
J-67	6,690.0	0.00	6,942.1	109.1
J-44	6,696.3	4.38	6,946.1	108.1
J-43	6,695.9	0.00	6,945.0	107.8
J-42	6,697.7	2.19	6,945.5	107.2
J-217	6,698.9	1.09	6,946.5	107.1
J-218	6,700.9	4.38	6,947.6	106.7
J-4	6,713.7	2.19	6,958.4	105.9
J-38	6,702.3	0.00	6,946.2	105.5
J-48	6,706.3	2.19	6,948.2	104.6
J-201	6,701.3	3.28	6,941.2	103.8
J-68	6,702.3	3.28	6,942.1	103.8
J-208	6,706.0	4.38	6,945.6	103.7
J-50	6,710.8	4.38	6,948.8	103.0
J-54	6,715.4	3.28	6,950.7	101.8
J-9	6,721.6	0.00	6,956.9	101.8
J-10	6,721.6	2.19	6,956.8	101.7
J-35	6,713.0	6.57	6,944.5	100.2
J-69	6,710.4	0.00	6,940.3	99.5
J-120	6,719.2	3.28	6,948.6	99.3
J-198	6,711.6	3.28	6,940.3	98.9
J-11	6,727.2	2.19	6,955.6	98.8
J-32	6,717.3	0.00	6,943.8	98.0
J-31	6,717.3	0.00	6,943.8	98.0

Label	Elevation (ft)	Demand (gpm)	Hydraulic Grade (ft)	Pressure (psi)
J-207	6,719.3	4.38	6,943.3	96.9
J-221	6,736.5	3.28	6,960.3	96.8
J-116	6,726.8	4.38	6,948.5	95.9
J-118	6,727.0	0.00	6,948.5	95.8
J-117	6,727.0	0.00	6,948.5	95.8
J-238	6,717.8	3.28	6,939.0	95.7
J-14	6,737.8	3.28	6,955.8	94.3
J-73	6,719.6	3.28	6,936.9	94.0
J-100	6,717.5	2.19	6,934.3	93.8
J-30	6,726.1	3.28	6,942.3	93.5
J-70	6,722.7	0.00	6,938.5	93.4
J-112	6,732.3	4.38	6,948.1	93.4
J-197	6,723.1	3.28	6,938.4	93.2
J-179	6,717.9	2.19	6,933.2	93.2
J-230	6,733.4	0.00	6,948.4	93.0
J-191	6,719.9	2.19	6,933.3	92.3
J-231	6,738.5	0.00	6,951.8	92.3
J-76	6,727.2	3.28	6,940.3	92.2
J-97	6,722.5	2.19	6,934.8	91.9
J-77	6,723.7	3.28	6,935.3	91.5
J-128	6,721.8	0.00	6,933.2	91.5
J-94	6,723.0	0.00	6,934.3	91.4
J-196	6,726.3	2.19	6,937.5	91.4
J-93	6,723.7	2.19	6,934.3	91.1
J-29	6,731.1	2.19	6,941.5	91.0
J-129	6,723.2	2.19	6,932.8	90.7
J-72	6,726.3	2.19	6,935.3	90.4
J-185	6,724.0	2.19	6,932.7	90.3
J-176	6,724.4	1.09	6,933.1	90.3
J-195	6,728.5	2.19	6,936.9	90.1
J-126	6,726.0	0.00	6,934.2	90.1
J-127	6,726.0	0.00	6,934.2	90.1
J-125	6,727.2	4.38	6,934.3	89.6
J-71	6,730.2	0.00	6,936.9	89.4
J-27	6,734.7	2.19	6,940.9	89.2
J-190	6,726.9	2.19	6,933.0	89.2

Label	Elevation (ft)	Demand (gpm)	Hydraulic Grade (ft)	Pressure (psi)
J-90	6,727.7	2.19	6,933.8	89.2
J-130	6,727.6	1.09	6,932.7	88.8
J-214	6,729.7	1.09	6,933.3	88.1
J-219	6,751.8	2.19	6,954.1	87.5
J-1	6,750.4	2.19	6,952.7	87.5
J-232	6,750.5	0.00	6,952.7	87.5
J-133	6,730.4	1.09	6,932.6	87.5
J-109	6,743.4	4.38	6,945.5	87.4
J-85	6,732.2	0.00	6,933.3	87.0
J-84	6,732.2	0.00	6,933.3	87.0
J-162	6,732.2	0.00	6,933.3	87.0
J-26	6,739.4	3.28	6,940.5	87.0
J-25	6,739.2	0.00	6,940.3	87.0
J-167	6,731.9	3.28	6,933.0	87.0
J-2	6,755.7	3.28	6,956.0	86.7
J-194	6,735.7	2.19	6,935.6	86.5
J-3	6,762.4	4.38	6,962.0	86.4
J-80	6,733.7	3.28	6,933.3	86.4
J-134	6,733.2	2.19	6,932.2	86.1
J-75	6,740.5	2.19	6,938.5	85.7
J-220	6,761.4	2.19	6,958.8	85.4
J-74	6,740.5	3.28	6,936.9	85.0
J-180	6,736.4	1.09	6,932.2	84.7
J-105	6,749.6	2.19	6,943.1	83.7
J-22	6,744.9	2.19	6,937.0	83.1
J-170	6,740.9	2.19	6,933.0	83.1
J-135	6,743.4	4.38	6,932.0	81.6
J-161	6,744.4	2.19	6,932.0	81.1
J-227	6,744.4	0.00	6,932.0	81.1
J-187	6,746.2	1.09	6,931.3	80.1
J-19	6,749.4	0.00	6,932.9	79.4
J-136	6,748.4	3.28	6,930.6	78.8
J-206	6,751.1	1.09	6,932.9	78.7
J-20	6,752.0	2.19	6,932.9	78.3
J-160	6,750.7	1.09	6,930.6	77.8
J-239	6,750.1	3.28	6,929.6	77.7

Label	Elevation (ft)	Demand (gpm)	Hydraulic Grade (ft)	Pressure (psi)
J-140	6,752.4	0.00	6,930.0	76.9
J-141	6,756.3	2.19	6,930.0	75.2
J-229	6,756.0	2.19	6,929.4	75.0
J-155	6,756.6	3.28	6,928.7	74.5
J-144	6,762.2	0.00	6,930.0	72.6
J-145	6,762.2	0.00	6,930.0	72.6
J-18	6,757.8	2.19	6,925.3	72.5
J-147	6,763.6	2.19	6,930.0	72.0
J-233	6,756.3	0.00	6,919.9	70.8
J-149	6,767.3	0.00	6,930.0	70.4
J-153	6,769.5	2.19	6,930.0	69.5
J-157	6,764.7	2.19	6,921.5	67.9
J-154	6,774.9	2.19	6,930.0	67.1
J-225	6,774.9	0.00	6,930.0	67.1
J-234	6,768.9	0.00	6,914.4	62.9
J-159	6,770.1	5.47	6,913.1	61.9

Label	Length (ft)	Diameter (in)	Hazen-Williams C	Flow (Absolute) (gpm)	Velocity (Maximum) (ft/s)	Headloss (ft)
P-256	60	6.0	130.0	1,500.00	17.02	9.44
P-159	517	8.0	120.0	797.14	5.09	7.20
P-279	519	8.0	120.0	794.95	5.07	7.18
P-281	493	8.0	120.0	710.52	4.54	5.54
P-278	479	8.0	120.0	710.52	4.54	5.39
P-55	993	12.0	123.0	1,344.50	3.81	4.82
P-286	379	8.0	120.0	712.71	4.55	4.29
P-20	358	8.0	120.0	719.28	4.59	4.11
P-274	1,028	8.0	120.0	367.82	2.35	3.42
P-287	293	8.0	120.0	715.99	4.57	3.35
P-23	280	8.0	120.0	721.47	4.60	3.24
P-248	522	8.0	120.0	513.27	3.28	3.22
P-107	572	8.0	120.0	458.03	2.92	2.85
P-247	451	8.0	120.0	511.08	3.26	2.75
P-114	514	8.0	120.0	464.59	2.97	2.64
P-49	903	12.0	123.0	1,011.19	2.87	2.59
P-111	463	8.0	120.0	460.22	2.94	2.33
P-264	257	12.0	123.0	1,739.68	4.94	2.01
P-53	403	12.0	123.0	1,341.22	3.80	1.95
P-245	559	8.0	120.0	372.20	2.38	1.90
P-250	467	12.0	123.0	1,218.75	3.46	1.89
P-249	407	12.0	123.0	1,222.04	3.47	1.66
P-4	387	12.0	123.0	1,216.57	3.45	1.56
P-275	437	8.0	120.0	370.01	2.36	1.47
P-229	614	12.0	123.0	916.43	2.60	1.47
P-284	555	12.0	123.0	891.26	2.53	1.26
P-280	28	8.0	120.0	1,505.47	9.61	1.25
P-227	515	12.0	123.0	916.43	2.60	1.23
P-10	302	12.0	123.0	1,214.38	3.44	1.21
P-199	557	12.0	123.0	871.56	2.47	1.21
P-223	528	8.0	120.0	285.33	1.82	1.10
P-221	519	8.0	120.0	274.39	1.75	1.00
P-172	765	12.0	123.0	661.37	1.88	1.00
P-126	577	8.0	120.0	258.10	1.65	1.00
P-206	427	12.0	123.0	882.51	2.50	0.95
P-277	265	8.0	120.0	367.82	2.35	0.88

Label	Length (ft)	Diameter (in)	Hazen-Williams C	Flow (Absolute) (gpm)	Velocity (Maximum) (ft/s)	Headloss (ft)
P-212	376	12.0	123.0	901.11	2.56	0.87
P-197	510	8.0	120.0	253.72	1.62	0.85
P-210	362	12.0	123.0	897.83	2.55	0.83
P-28	409	8.0	120.0	271.10	1.73	0.77
P-27	366	8.0	120.0	268.91	1.72	0.68
P-193	352	12.0	123.0	816.84	2.32	0.68
P-33	337	8.0	120.0	278.76	1.78	0.67
P-37	428	12.0	123.0	721.49	2.05	0.66
P-262	333	12.0	120.0	802.61	2.28	0.65
P-194	335	12.0	123.0	815.74	2.31	0.64
P-263	330	12.0	120.0	800.42	2.27	0.64
P-48	504	8.0	120.0	216.84	1.38	0.63
P-243	524	8.0	120.0	210.27	1.34	0.62
P-204	274	12.0	123.0	880.32	2.50	0.61
P-224	282	8.0	120.0	289.71	1.85	0.60
P-140	313	12.0	123.0	811.37	2.30	0.60
P-46	473	8.0	120.0	214.65	1.37	0.58
P-41	354	12.0	123.0	719.30	2.04	0.54
P-240	485	8.0	120.0	201.51	1.29	0.53
P-98	471	12.0	123.0	603.61	1.71	0.52
P-241	423	8.0	120.0	205.89	1.31	0.48
P-92	437	12.0	123.0	599.24	1.70	0.48
P-285	210	12.0	123.0	887.98	2.52	0.47
P-222	233	8.0	120.0	278.76	1.78	0.46
P-87	410	12.0	123.0	597.05	1.69	0.44
P-242	371	8.0	120.0	206.99	1.32	0.43
P-99	371	12.0	123.0	605.80	1.72	0.41
P-132	490	8.0	120.0	171.88	1.10	0.40
P-200	177	12.0	123.0	869.37	2.47	0.38
P-167	335	12.0	123.0	592.67	1.68	0.36
P-239	327	8.0	120.0	199.33	1.27	0.35
P-25	188	8.0	120.0	266.72	1.70	0.35
P-137	410	8.0	120.0	165.32	1.06	0.31
P-138	388	8.0	120.0	162.03	1.03	0.28
P-272	49	8.0	120.0	468.97	2.99	0.25
P-11	486	8.0	120.0	132.32	0.84	0.24

Label	Length (ft)	Diameter (in)	Hazen-Williams C	Flow (Absolute) (gpm)	Velocity (Maximum) (ft/s)	Headloss (ft)
P-24	127	8.0	120.0	263.44	1.68	0.23
P-17	413	8.0	120.0	135.60	0.87	0.22
P-225	81	12.0	123.0	916.43	2.60	0.19
P-134	242	8.0	120.0	166.41	1.06	0.19
P-237	168	8.0	120.0	197.14	1.26	0.18
P-125	479	8.0	120.0	108.81	0.69	0.17
P-205	56	12.0	123.0	885.79	2.51	0.13
P-273	363	8.0	120.0	101.15	0.65	0.11
P-9	26	12.0	123.0	1,216.57	3.45	0.11
P-198	59	8.0	120.0	251.53	1.61	0.10
P-122	284	8.0	120.0	105.53	0.67	0.09
P-196	484	8.0	120.0	76.36	0.49	0.09
P-176	499	8.0	120.0	74.17	0.47	0.09
P-95	69	12.0	123.0	601.43	1.71	0.08
P-182	395	8.0	120.0	77.46	0.49	0.07
P-133	88	8.0	120.0	169.70	1.08	0.07
P-129	41	8.0	120.0	253.72	1.62	0.07
P-211	29	12.0	123.0	903.30	2.56	0.07
P-207	27	12.0	123.0	894.54	2.54	0.06
P-30	25	8.0	120.0	278.76	1.78	0.05
P-119	150	8.0	120.0	105.53	0.67	0.05
P-130	25	8.0	120.0	253.72	1.62	0.04
P-166	17	12.0	123.0	597.05	1.69	0.02
P-120	27	8.0	120.0	105.53	0.67	0.01
P-64	225	8.0	120.0	2.19	0.01	0.00
P-153	304	8.0	120.0	4.38	0.03	0.00
P-149	140	8.0	120.0	6.57	0.04	0.00
P-66	324	8.0	120.0	2.19	0.01	0.00
P-259	677	8.0	120.0	2.19	0.01	0.00
P-215	241	8.0	120.0	6.57	0.04	0.00
P-82	376	8.0	120.0	4.38	0.03	0.00
P-74	238	8.0	120.0	3.28	0.02	0.00
P-201	57	8.0	120.0	5.47	0.03	0.00
P-219	79	8.0	120.0	3.28	0.02	0.00
P-77	350	8.0	120.0	3.28	0.02	0.00
P-78	381	8.0	120.0	3.28	0.02	0.00

Label	Length (ft)	Diameter (in)	Hazen-Williams C	Flow (Absolute) (gpm)	Velocity (Maximum) (ft/s)	Headloss (ft)
P-163	376	8.0	120.0	1.09	0.01	0.00
P-65	169	8.0	120.0	0.00	0.00	0.00
P-67	37	12.0	123.0	13.13	0.04	0.00
P-68	479	12.0	123.0	9.85	0.03	0.00
P-69	342	8.0	120.0	3.28	0.02	0.00
P-76	834	8.0	120.0	2.19	0.01	0.00
P-100	356	8.0	120.0	2.19	0.01	0.00
P-144	282	12.0	123.0	8.76	0.02	0.00
P-145	293	12.0	123.0	6.57	0.02	0.00
P-148	26	8.0	120.0	6.57	0.04	0.00
P-151	177	8.0	120.0	0.00	0.00	0.00
P-165	17	12.0	123.0	4.38	0.01	0.00
P-175	228	8.0	120.0	2.19	0.01	0.00
P-185	292	8.0	120.0	2.19	0.01	0.00
P-186	376	8.0	120.0	1.09	0.01	0.00
P-187	492	8.0	120.0	2.19	0.01	0.00
P-202	315	8.0	120.0	3.28	0.02	0.00
P-216	200	8.0	120.0	4.38	0.03	0.00
P-220	431	8.0	120.0	2.19	0.01	0.00
P-236	420	8.0	120.0	1.09	0.01	0.00
P-252	491	8.0	120.0	2.19	0.01	0.00
P-253	22	8.0	120.0	2.19	0.01	0.00
P-255	33	6.0	130.0	0.00	0.00	0.00
P-257	60	6.0	130.0	0.00	0.00	0.00
P-258	52	6.0	130.0	0.00	0.00	0.00
P-260	28	8.0	120.0	2.19	0.01	0.00
P-261	38	6.0	130.0	0.00	0.00	0.00
P-276	42	8.0	120.0	2.19	0.01	0.00

AVERAGE DAY

105 PSI

Label	Elevation (ft)	Demand (gpm)	Hydraulic Grade (ft)	Pressure (psi)
J-65	6,663.3	0.00	7,009.9	150.0
J-64	6,665.9	0.83	7,009.9	148.8
J-61	6,670.4	0.00	7,009.9	146.9
J-66	6,671.2	0.83	7,009.9	146.5
J-204	6,673.1	0.83	7,009.9	145.7
J-203	6,677.4	1.24	7,009.9	143.9
J-210	6,684.8	0.00	7,009.9	140.7
J-209	6,685.2	0.00	7,009.9	140.5
J-215	6,687.2	0.83	7,009.9	139.6
J-56	6,688.6	0.00	7,009.9	139.0
J-202	6,688.6	0.83	7,009.9	139.0
J-67	6,690.0	0.00	7,009.9	138.4
J-216	6,692.4	0.83	7,009.9	137.4
J-45	6,694.6	1.24	7,009.9	136.4
J-43	6,695.9	0.00	7,009.9	135.9
J-44	6,696.3	1.65	7,009.9	135.7
J-42	6,697.7	0.83	7,009.9	135.1
J-217	6,698.9	0.41	7,009.9	134.6
J-218	6,700.9	1.65	7,009.9	133.7
J-201	6,701.3	1.24	7,009.9	133.5
J-38	6,702.3	0.00	7,009.9	133.1
J-68	6,702.3	1.24	7,009.9	133.1
J-208	6,706.0	1.65	7,009.9	131.5
J-48	6,706.3	0.83	7,009.9	131.4
J-69	6,710.4	0.00	7,009.9	129.6
J-50	6,710.8	1.65	7,009.9	129.4
J-198	6,711.6	1.24	7,009.9	129.1
J-35	6,713.0	2.48	7,009.9	128.5
J-4	6,713.7	0.83	7,010.0	128.2
J-54	6,715.4	1.24	7,009.9	127.4
J-31	6,717.3	0.00	7,009.9	126.6
J-32	6,717.3	0.00	7,009.9	126.6
J-100	6,717.5	0.83	7,009.9	126.5
J-238	6,717.8	1.24	7,009.9	126.4
J-179	6,717.9	0.83	7,009.9	126.3

AVERAGE DAY

105 PSI

Label	Elevation (ft)	Demand (gpm)	Hydraulic Grade (ft)	Pressure (psi)
J-120	6,719.2	1.24	7,009.9	125.8
J-207	6,719.3	1.65	7,009.9	125.7
J-73	6,719.6	1.24	7,009.9	125.6
J-191	6,719.9	0.83	7,009.9	125.5
J-9	6,721.6	0.00	7,010.0	124.8
J-10	6,721.6	0.83	7,010.0	124.8
J-128	6,721.8	0.00	7,009.9	124.7
J-97	6,722.5	0.83	7,009.9	124.4
J-70	6,722.7	0.00	7,009.9	124.3
J-94	6,723.0	0.00	7,009.9	124.1
J-197	6,723.1	1.24	7,009.9	124.1
J-129	6,723.2	0.83	7,009.9	124.0
J-77	6,723.7	1.24	7,009.9	123.8
J-93	6,723.7	0.83	7,009.9	123.8
J-185	6,724.0	0.83	7,009.9	123.7
J-176	6,724.4	0.41	7,009.9	123.5
J-126	6,726.0	0.00	7,009.9	122.8
J-127	6,726.0	0.00	7,009.9	122.8
J-30	6,726.1	1.24	7,009.9	122.8
J-72	6,726.3	0.83	7,009.9	122.7
J-196	6,726.3	0.83	7,009.9	122.7
J-116	6,726.8	1.65	7,009.9	122.5
J-190	6,726.9	0.83	7,009.9	122.4
J-117	6,727.0	0.00	7,009.9	122.4
J-118	6,727.0	0.00	7,009.9	122.4
J-11	6,727.2	0.83	7,010.0	122.3
J-76	6,727.2	1.24	7,009.9	122.3
J-125	6,727.2	1.65	7,009.9	122.3
J-130	6,727.6	0.41	7,009.9	122.1
J-90	6,727.7	0.83	7,009.9	122.1
J-195	6,728.5	0.83	7,009.9	121.8
J-214	6,729.7	0.41	7,009.9	121.2
J-71	6,730.2	0.00	7,009.9	121.0
J-133	6,730.4	0.41	7,009.9	120.9
J-29	6,731.1	0.83	7,009.9	120.6

AVERAGE DAY

105 PSI

Label	Elevation (ft)	Demand (gpm)	Hydraulic Grade (ft)	Pressure (psi)
J-167	6,731.9	1.24	7,009.9	120.3
J-84	6,732.2	0.00	7,009.9	120.2
J-85	6,732.2	0.00	7,009.9	120.2
J-162	6,732.2	0.00	7,009.9	120.2
J-112	6,732.3	1.65	7,009.9	120.1
J-134	6,733.2	0.83	7,009.9	119.7
J-230	6,733.4	0.00	7,009.9	119.6
J-80	6,733.7	1.24	7,009.9	119.5
J-27	6,734.7	0.83	7,009.9	119.1
J-194	6,735.7	0.83	7,009.9	118.6
J-180	6,736.4	0.41	7,009.9	118.3
J-221	6,736.5	1.24	7,010.0	118.3
J-14	6,737.8	1.24	7,010.0	117.8
J-231	6,738.5	0.00	7,010.0	117.4
J-25	6,739.2	0.00	7,009.9	117.1
J-26	6,739.4	1.24	7,009.9	117.0
J-75	6,740.5	0.83	7,009.9	116.6
J-74	6,740.5	1.24	7,009.9	116.6
J-170	6,740.9	0.83	7,009.9	116.4
J-109	6,743.4	1.65	7,009.9	115.3
J-135	6,743.4	1.65	7,009.9	115.3
J-161	6,744.4	0.83	7,009.9	114.9
J-227	6,744.4	0.00	7,009.9	114.9
J-22	6,744.9	0.83	7,009.9	114.7
J-187	6,746.2	0.41	7,009.9	114.1
J-136	6,748.4	1.24	7,009.9	113.1
J-19	6,749.4	0.00	7,009.9	112.7
J-105	6,749.6	0.83	7,009.9	112.6
J-239	6,750.1	1.24	7,009.9	112.4
J-1	6,750.4	0.83	7,010.0	112.3
J-232	6,750.5	0.00	7,010.0	112.3
J-160	6,750.7	0.41	7,009.9	112.1
J-206	6,751.1	0.41	7,009.9	112.0
J-219	6,751.8	0.83	7,010.0	111.7
J-20	6,752.0	0.83	7,009.9	111.6

AVERAGE DAY

105 PSI

Label	Elevation (ft)	Demand (gpm)	Hydraulic Grade (ft)	Pressure (psi)
J-140	6,752.4	0.00	7,009.9	111.4
J-2	6,755.7	1.24	7,010.0	110.0
J-229	6,756.0	0.83	7,009.9	109.9
J-233	6,756.3	0.00	7,009.9	109.7
J-141	6,756.3	0.83	7,009.9	109.7
J-155	6,756.6	1.24	7,009.9	109.6
J-18	6,757.8	0.83	7,009.9	109.1
J-220	6,761.4	0.83	7,010.0	107.5
J-144	6,762.2	0.00	7,009.9	107.2
J-145	6,762.2	0.00	7,009.9	107.2
J-3	6,762.4	1.65	7,010.0	107.1
J-147	6,763.6	0.83	7,009.9	106.6
J-157	6,764.7	0.83	7,009.9	106.1
J-149	6,767.3	0.00	7,009.9	105.0
J-234	6,768.9	0.00	7,009.9	104.3
J-153	6,769.5	0.83	7,009.9	104.0
J-159	6,770.1	2.07	7,009.9	103.8
J-154	6,774.9	0.83	7,009.9	101.7
J-225	6,774.9	0.00	7,009.9	101.7

AVERAGE DAY

105 PSI

Label	Length (ft)	Diameter (in)	Hazen-Williams C	Flow (Absolute) (gpm)	Velocity (Maximum) (ft/s)	Headloss (ft)
P-55	993	12.0	123.0	63.73	0.18	0.02
P-248	522	8.0	120.0	26.34	0.17	0.01
P-274	1,028	8.0	120.0	16.40	0.10	0.01
P-247	451	8.0	120.0	25.52	0.16	0.01
P-264	257	12.0	123.0	90.45	0.26	0.01
P-49	903	12.0	123.0	44.45	0.13	0.01
P-250	467	12.0	123.0	61.22	0.17	0.01
P-249	407	12.0	123.0	62.46	0.18	0.01
P-245	559	8.0	120.0	18.06	0.12	0.01
P-53	403	12.0	123.0	62.49	0.18	0.01
P-4	387	12.0	123.0	60.39	0.17	0.01
P-275	437	8.0	120.0	17.23	0.11	0.01
P-10	302	12.0	123.0	59.57	0.17	0.00
P-114	514	8.0	120.0	15.89	0.10	0.00
P-111	463	8.0	120.0	14.24	0.09	0.00
P-107	572	8.0	120.0	13.41	0.09	0.00
P-229	614	12.0	123.0	37.32	0.11	0.00
P-48	504	8.0	120.0	12.36	0.08	0.00
P-227	515	12.0	123.0	37.32	0.11	0.00
P-20	358	8.0	120.0	13.90	0.09	0.00
P-281	493	8.0	120.0	10.59	0.07	0.00
P-223	528	8.0	120.0	9.57	0.06	0.00
P-46	473	8.0	120.0	11.53	0.07	0.00
P-37	428	12.0	123.0	33.22	0.09	0.00
P-277	265	8.0	120.0	16.40	0.10	0.00
P-23	280	8.0	120.0	14.73	0.09	0.00
P-243	524	8.0	120.0	9.88	0.06	0.00
P-286	379	8.0	120.0	11.42	0.07	0.00
P-284	555	12.0	123.0	27.82	0.08	0.00
P-41	354	12.0	123.0	32.40	0.09	0.00
P-287	293	8.0	120.0	12.66	0.08	0.00
P-278	479	8.0	120.0	10.59	0.07	0.00
P-242	371	8.0	120.0	8.64	0.06	0.00
P-159	517	8.0	120.0	7.70	0.05	0.00
P-279	519	8.0	120.0	8.52	0.05	0.00

AVERAGE DAY

105 PSI

Label	Length (ft)	Diameter (in)	Hazen-Williams C	Flow (Absolute) (gpm)	Velocity (Maximum) (ft/s)	Headloss (ft)
P-224	282	8.0	120.0	11.23	0.07	0.00
P-212	376	12.0	123.0	31.54	0.09	0.00
P-210	362	12.0	123.0	30.30	0.09	0.00
P-240	485	8.0	120.0	6.57	0.04	0.00
P-221	519	8.0	120.0	5.44	0.03	0.00
P-204	274	12.0	123.0	23.69	0.07	0.00
P-17	413	8.0	120.0	6.22	0.04	0.00
P-199	557	12.0	123.0	20.39	0.06	0.00
P-206	427	12.0	123.0	24.52	0.07	0.00
P-272	49	8.0	120.0	17.54	0.11	0.00
P-241	423	8.0	120.0	8.23	0.05	0.00
P-211	29	12.0	123.0	32.36	0.09	0.00
P-200	177	12.0	123.0	19.56	0.06	0.00
P-187	492	8.0	120.0	0.83	0.01	0.00
P-98	471	12.0	123.0	11.24	0.03	0.00
P-153	304	8.0	120.0	1.65	0.01	0.00
P-215	241	8.0	120.0	2.48	0.02	0.00
P-239	327	8.0	120.0	5.75	0.04	0.00
P-126	577	8.0	120.0	5.43	0.03	0.00
P-92	437	12.0	123.0	9.59	0.03	0.00
P-205	56	12.0	123.0	25.75	0.07	0.00
P-27	366	8.0	120.0	3.38	0.02	0.00
P-285	210	12.0	123.0	26.58	0.08	0.00
P-207	27	12.0	123.0	29.06	0.08	0.00
P-197	510	8.0	120.0	3.78	0.02	0.00
P-225	81	12.0	123.0	37.32	0.11	0.00
P-33	337	8.0	120.0	7.10	0.05	0.00
P-237	168	8.0	120.0	4.92	0.03	0.00
P-125	479	8.0	120.0	4.03	0.03	0.00
P-222	233	8.0	120.0	7.10	0.05	0.00
P-11	486	8.0	120.0	4.98	0.03	0.00
P-9	26	12.0	123.0	60.39	0.17	0.00
P-24	127	8.0	120.0	1.31	0.01	0.00
P-25	188	8.0	120.0	2.55	0.02	0.00
P-28	409	8.0	120.0	4.20	0.03	0.00

AVERAGE DAY

105 PSI

Label	Length (ft)	Diameter (in)	Hazen-Williams C	Flow (Absolute) (gpm)	Velocity (Maximum) (ft/s)	Headloss (ft)
P-30	25	8.0	120.0	7.10	0.05	0.00
P-64	225	8.0	120.0	0.83	0.01	0.00
P-65	169	8.0	120.0	0.00	0.00	0.00
P-66	324	8.0	120.0	0.83	0.01	0.00
P-67	37	12.0	123.0	4.96	0.01	0.00
P-68	479	12.0	123.0	3.72	0.01	0.00
P-69	342	8.0	120.0	1.24	0.01	0.00
P-74	238	8.0	120.0	1.24	0.01	0.00
P-76	834	8.0	120.0	0.83	0.01	0.00
P-77	350	8.0	120.0	1.24	0.01	0.00
P-78	381	8.0	120.0	1.24	0.01	0.00
P-82	376	8.0	120.0	1.65	0.01	0.00
P-87	410	12.0	123.0	8.76	0.02	0.00
P-95	69	12.0	123.0	10.41	0.03	0.00
P-99	371	12.0	123.0	12.07	0.03	0.00
P-100	356	8.0	120.0	0.83	0.01	0.00
P-119	150	8.0	120.0	2.79	0.02	0.00
P-120	27	8.0	120.0	2.79	0.02	0.00
P-122	284	8.0	120.0	2.79	0.02	0.00
P-129	41	8.0	120.0	3.78	0.02	0.00
P-130	25	8.0	120.0	3.78	0.02	0.00
P-132	490	8.0	120.0	1.98	0.01	0.00
P-133	88	8.0	120.0	1.16	0.01	0.00
P-134	242	8.0	120.0	0.08	0.00	0.00
P-137	410	8.0	120.0	0.50	0.00	0.00
P-138	388	8.0	120.0	1.73	0.01	0.00
P-140	313	12.0	123.0	2.33	0.01	0.00
P-144	282	12.0	123.0	3.30	0.01	0.00
P-145	293	12.0	123.0	2.48	0.01	0.00
P-148	26	8.0	120.0	2.48	0.02	0.00
P-149	140	8.0	120.0	2.48	0.02	0.00
P-151	177	8.0	120.0	0.00	0.00	0.00
P-163	376	8.0	120.0	0.41	0.00	0.00
P-165	17	12.0	123.0	1.65	0.00	0.00
P-166	17	12.0	123.0	8.76	0.02	0.00

AVERAGE DAY

105 PSI

Label	Length (ft)	Diameter (in)	Hazen-Williams C	Flow (Absolute) (gpm)	Velocity (Maximum) (ft/s)	Headloss (ft)
P-167	335	12.0	123.0	7.11	0.02	0.00
P-172	765	12.0	123.0	3.95	0.01	0.00
P-175	228	8.0	120.0	0.83	0.01	0.00
P-176	499	8.0	120.0	1.10	0.01	0.00
P-182	395	8.0	120.0	0.14	0.00	0.00
P-185	292	8.0	120.0	0.83	0.01	0.00
P-186	376	8.0	120.0	0.41	0.00	0.00
P-193	352	12.0	123.0	0.26	0.00	0.00
P-194	335	12.0	123.0	0.68	0.00	0.00
P-196	484	8.0	120.0	0.27	0.00	0.00
P-198	59	8.0	120.0	2.95	0.02	0.00
P-201	57	8.0	120.0	2.07	0.01	0.00
P-202	315	8.0	120.0	1.24	0.01	0.00
P-216	200	8.0	120.0	1.65	0.01	0.00
P-219	79	8.0	120.0	1.24	0.01	0.00
P-220	431	8.0	120.0	0.83	0.01	0.00
P-236	420	8.0	120.0	0.41	0.00	0.00
P-252	491	8.0	120.0	0.83	0.01	0.00
P-253	22	8.0	120.0	0.83	0.01	0.00
P-255	33	6.0	130.0	0.00	0.00	0.00
P-256	60	6.0	130.0	0.00	0.00	0.00
P-257	60	6.0	130.0	0.00	0.00	0.00
P-258	52	6.0	130.0	0.00	0.00	0.00
P-259	677	8.0	120.0	0.83	0.01	0.00
P-260	28	8.0	120.0	0.83	0.01	0.00
P-261	38	6.0	130.0	0.00	0.00	0.00
P-262	333	12.0	120.0	5.63	0.02	0.00
P-263	330	12.0	120.0	6.46	0.02	0.00
P-273	363	8.0	120.0	1.14	0.01	0.00
P-276	42	8.0	120.0	0.83	0.01	0.00
P-280	28	8.0	120.0	2.07	0.01	0.00

MAX DAY

105 PSI

Label	Elevation (ft)	Demand (gpm)	Hydraulic Grade (ft)	Pressure (psi)
J-65	6,663.3	0.00	7,009.5	149.8
J-64	6,665.9	2.19	7,009.5	148.7
J-61	6,670.4	0.00	7,009.5	146.7
J-66	6,671.2	2.19	7,009.5	146.4
J-204	6,673.1	2.19	7,009.5	145.6
J-203	6,677.4	3.28	7,009.5	143.7
J-210	6,684.8	0.00	7,009.6	140.5
J-209	6,685.2	0.00	7,009.6	140.3
J-215	6,687.2	2.19	7,009.6	139.5
J-56	6,688.6	0.00	7,009.5	138.9
J-202	6,688.6	2.19	7,009.5	138.9
J-67	6,690.0	0.00	7,009.5	138.2
J-216	6,692.4	2.19	7,009.6	137.2
J-45	6,694.6	3.28	7,009.6	136.3
J-43	6,695.9	0.00	7,009.6	135.7
J-44	6,696.3	4.38	7,009.6	135.5
J-42	6,697.7	2.19	7,009.6	134.9
J-217	6,698.9	1.09	7,009.6	134.4
J-218	6,700.9	4.38	7,009.6	133.6
J-201	6,701.3	3.28	7,009.5	133.4
J-38	6,702.3	0.00	7,009.6	133.0
J-68	6,702.3	3.28	7,009.5	132.9
J-208	6,706.0	4.38	7,009.6	131.4
J-48	6,706.3	2.19	7,009.6	131.2
J-69	6,710.4	0.00	7,009.5	129.4
J-50	6,710.8	4.38	7,009.7	129.3
J-198	6,711.6	3.28	7,009.5	128.9
J-35	6,713.0	6.57	7,009.6	128.3
J-4	6,713.7	2.19	7,009.9	128.1
J-54	6,715.4	3.28	7,009.7	127.3
J-32	6,717.3	0.00	7,009.6	126.5
J-31	6,717.3	0.00	7,009.6	126.5
J-100	6,717.5	2.19	7,009.5	126.3
J-238	6,717.8	3.28	7,009.5	126.2
J-179	6,717.9	2.19	7,009.5	126.1

MAX DAY

105 PSI

Label	Elevation (ft)	Demand (gpm)	Hydraulic Grade (ft)	Pressure (psi)
J-120	6,719.2	3.28	7,009.6	125.7
J-207	6,719.3	4.38	7,009.6	125.6
J-73	6,719.6	3.28	7,009.5	125.4
J-191	6,719.9	2.19	7,009.5	125.3
J-9	6,721.6	0.00	7,009.8	124.7
J-10	6,721.6	2.19	7,009.8	124.7
J-128	6,721.8	0.00	7,009.5	124.5
J-97	6,722.5	2.19	7,009.5	124.2
J-70	6,722.7	0.00	7,009.5	124.1
J-94	6,723.0	0.00	7,009.5	123.9
J-197	6,723.1	3.28	7,009.5	123.9
J-129	6,723.2	2.19	7,009.5	123.9
J-77	6,723.7	3.28	7,009.5	123.6
J-93	6,723.7	2.19	7,009.5	123.6
J-185	6,724.0	2.19	7,009.5	123.5
J-176	6,724.4	1.09	7,009.5	123.3
J-30	6,726.1	3.28	7,009.6	122.6
J-126	6,726.0	0.00	7,009.5	122.6
J-127	6,726.0	0.00	7,009.5	122.6
J-72	6,726.3	2.19	7,009.5	122.5
J-196	6,726.3	2.19	7,009.5	122.5
J-116	6,726.8	4.38	7,009.6	122.4
J-118	6,727.0	0.00	7,009.6	122.3
J-117	6,727.0	0.00	7,009.6	122.3
J-11	6,727.2	2.19	7,009.8	122.3
J-190	6,726.9	2.19	7,009.5	122.3
J-76	6,727.2	3.28	7,009.5	122.1
J-125	6,727.2	4.38	7,009.5	122.1
J-130	6,727.6	1.09	7,009.5	121.9
J-90	6,727.7	2.19	7,009.5	121.9
J-195	6,728.5	2.19	7,009.5	121.6
J-214	6,729.7	1.09	7,009.5	121.0
J-71	6,730.2	0.00	7,009.5	120.8
J-133	6,730.4	1.09	7,009.5	120.7
J-29	6,731.1	2.19	7,009.6	120.5

MAX DAY

105 PSI

Label	Elevation (ft)	Demand (gpm)	Hydraulic Grade (ft)	Pressure (psi)
J-167	6,731.9	3.28	7,009.5	120.1
J-112	6,732.3	4.38	7,009.6	120.0
J-84	6,732.2	0.00	7,009.5	120.0
J-85	6,732.2	0.00	7,009.5	120.0
J-162	6,732.2	0.00	7,009.5	120.0
J-134	6,733.2	2.19	7,009.5	119.5
J-230	6,733.4	0.00	7,009.6	119.5
J-80	6,733.7	3.28	7,009.5	119.3
J-27	6,734.7	2.19	7,009.6	118.9
J-194	6,735.7	2.19	7,009.5	118.4
J-221	6,736.5	3.28	7,009.9	118.3
J-180	6,736.4	1.09	7,009.5	118.1
J-14	6,737.8	3.28	7,009.8	117.7
J-231	6,738.5	0.00	7,009.7	117.3
J-25	6,739.2	0.00	7,009.6	117.0
J-26	6,739.4	3.28	7,009.6	116.9
J-75	6,740.5	2.19	7,009.5	116.4
J-74	6,740.5	3.28	7,009.5	116.4
J-170	6,740.9	2.19	7,009.5	116.2
J-109	6,743.4	4.38	7,009.6	115.2
J-135	6,743.4	4.38	7,009.5	115.1
J-161	6,744.4	2.19	7,009.5	114.7
J-227	6,744.4	0.00	7,009.5	114.7
J-22	6,744.9	2.19	7,009.6	114.5
J-187	6,746.2	1.09	7,009.5	113.9
J-136	6,748.4	3.28	7,009.5	113.0
J-19	6,749.4	0.00	7,009.5	112.5
J-105	6,749.6	2.19	7,009.6	112.5
J-239	6,750.1	3.28	7,009.5	112.2
J-1	6,750.4	2.19	7,009.7	112.2
J-232	6,750.5	0.00	7,009.7	112.2
J-160	6,750.7	1.09	7,009.5	112.0
J-206	6,751.1	1.09	7,009.5	111.8
J-219	6,751.8	2.19	7,009.8	111.6
J-20	6,752.0	2.19	7,009.5	111.4

MAX DAY

105 PSI

Label	Elevation (ft)	Demand (gpm)	Hydraulic Grade (ft)	Pressure (psi)
J-140	6,752.4	0.00	7,009.5	111.2
J-2	6,755.7	3.28	7,009.8	109.9
J-229	6,756.0	2.19	7,009.5	109.7
J-233	6,756.3	0.00	7,009.5	109.6
J-141	6,756.3	2.19	7,009.5	109.5
J-155	6,756.6	3.28	7,009.5	109.4
J-18	6,757.8	2.19	7,009.5	108.9
J-220	6,761.4	2.19	7,009.9	107.5
J-3	6,762.4	4.38	7,009.9	107.1
J-144	6,762.2	0.00	7,009.5	107.0
J-145	6,762.2	0.00	7,009.5	107.0
J-147	6,763.6	2.19	7,009.5	106.4
J-157	6,764.7	2.19	7,009.5	105.9
J-149	6,767.3	0.00	7,009.5	104.8
J-234	6,768.9	0.00	7,009.5	104.1
J-153	6,769.5	2.19	7,009.5	103.8
J-159	6,770.1	5.47	7,009.5	103.6
J-154	6,774.9	2.19	7,009.5	101.5
J-225	6,774.9	0.00	7,009.5	101.5

MAX DAY

105 PSI

Label	Length (ft)	Diameter (in)	Hazen-Williams C	Flow (Absolute) (gpm)	Velocity (Maximum) (ft/s)	Headloss (ft)
P-55	993	12.0	123.0	168.86	0.48	0.10
P-248	522	8.0	120.0	69.80	0.45	0.08
P-247	451	8.0	120.0	67.62	0.43	0.07
P-274	1,028	8.0	120.0	43.47	0.28	0.07
P-264	257	12.0	123.0	239.69	0.68	0.05
P-49	903	12.0	123.0	117.78	0.33	0.05
P-250	467	12.0	123.0	162.23	0.46	0.05
P-245	559	8.0	120.0	47.84	0.31	0.04
P-53	403	12.0	123.0	165.58	0.47	0.04
P-249	407	12.0	123.0	165.51	0.47	0.04
P-4	387	12.0	123.0	160.04	0.45	0.04
P-114	514	8.0	120.0	42.11	0.27	0.03
P-275	437	8.0	120.0	45.66	0.29	0.03
P-10	302	12.0	123.0	157.85	0.45	0.03
P-107	572	8.0	120.0	35.54	0.23	0.03
P-229	614	12.0	123.0	98.89	0.28	0.02
P-111	463	8.0	120.0	37.73	0.24	0.02
P-227	515	12.0	123.0	98.89	0.28	0.02
P-48	504	8.0	120.0	32.74	0.21	0.02
P-277	265	8.0	120.0	43.47	0.28	0.02
P-20	358	8.0	120.0	36.83	0.24	0.02
P-46	473	8.0	120.0	30.55	0.19	0.02
P-23	280	8.0	120.0	39.02	0.25	0.01
P-278	479	8.0	120.0	28.07	0.18	0.01
P-37	428	12.0	123.0	88.04	0.25	0.01
P-281	493	8.0	120.0	28.07	0.18	0.01
P-243	524	8.0	120.0	26.17	0.17	0.01
P-286	379	8.0	120.0	30.26	0.19	0.01
P-223	528	8.0	120.0	25.37	0.16	0.01
P-284	555	12.0	123.0	73.72	0.21	0.01
P-287	293	8.0	120.0	33.54	0.21	0.01
P-212	376	12.0	123.0	83.57	0.24	0.01
P-41	354	12.0	123.0	85.85	0.24	0.01
P-279	519	8.0	120.0	22.60	0.14	0.01
P-224	282	8.0	120.0	29.74	0.19	0.01

MAX DAY

105 PSI

Label	Length (ft)	Diameter (in)	Hazen-Williams C	Flow (Absolute) (gpm)	Velocity (Maximum) (ft/s)	Headloss (ft)
P-210	362	12.0	123.0	80.28	0.23	0.01
P-159	517	8.0	120.0	20.41	0.13	0.01
P-206	427	12.0	123.0	64.96	0.18	0.01
P-241	423	8.0	120.0	21.80	0.14	0.01
P-242	371	8.0	120.0	22.89	0.15	0.01
P-199	557	12.0	123.0	54.02	0.15	0.01
P-240	485	8.0	120.0	17.42	0.11	0.01
P-33	337	8.0	120.0	18.80	0.12	0.00
P-126	577	8.0	120.0	14.39	0.09	0.00
P-17	413	8.0	120.0	16.49	0.11	0.00
P-221	519	8.0	120.0	14.42	0.09	0.00
P-285	210	12.0	123.0	70.43	0.20	0.00
P-204	274	12.0	123.0	62.77	0.18	0.00
P-225	81	12.0	123.0	98.89	0.28	0.00
P-11	486	8.0	120.0	13.20	0.08	0.00
P-272	49	8.0	120.0	46.48	0.30	0.00
P-239	327	8.0	120.0	15.23	0.10	0.00
P-222	233	8.0	120.0	18.80	0.12	0.00
P-9	26	12.0	123.0	160.04	0.45	0.00
P-200	177	12.0	123.0	51.83	0.15	0.00
P-125	479	8.0	120.0	10.68	0.07	0.00
P-98	471	12.0	123.0	29.78	0.08	0.00
P-28	409	8.0	120.0	11.14	0.07	0.00
P-197	510	8.0	120.0	10.01	0.06	0.00
P-92	437	12.0	123.0	25.40	0.07	0.00
P-99	371	12.0	123.0	31.97	0.09	0.00
P-27	366	8.0	120.0	8.95	0.06	0.00
P-211	29	12.0	123.0	85.76	0.24	0.00
P-205	56	12.0	123.0	68.25	0.19	0.00
P-207	27	12.0	123.0	77.00	0.22	0.00
P-87	410	12.0	123.0	23.22	0.07	0.00
P-237	168	8.0	120.0	13.04	0.08	0.00
P-172	765	12.0	123.0	10.46	0.03	0.00
P-176	499	8.0	120.0	2.91	0.02	0.00
P-138	388	8.0	120.0	4.60	0.03	0.00

MAX DAY

105 PSI

Label	Length (ft)	Diameter (in)	Hazen-Williams C	Flow (Absolute) (gpm)	Velocity (Maximum) (ft/s)	Headloss (ft)
P-122	284	8.0	120.0	7.40	0.05	0.00
P-153	304	8.0	120.0	4.38	0.03	0.00
P-129	41	8.0	120.0	10.01	0.06	0.00
P-132	490	8.0	120.0	5.25	0.03	0.00
P-167	335	12.0	123.0	18.84	0.05	0.00
P-259	677	8.0	120.0	2.19	0.01	0.00
P-30	25	8.0	120.0	18.80	0.12	0.00
P-215	241	8.0	120.0	6.57	0.04	0.00
P-120	27	8.0	120.0	7.40	0.05	0.00
P-82	376	8.0	120.0	4.38	0.03	0.00
P-95	69	12.0	123.0	27.59	0.08	0.00
P-148	26	8.0	120.0	6.57	0.04	0.00
P-100	356	8.0	120.0	2.19	0.01	0.00
P-77	350	8.0	120.0	3.28	0.02	0.00
P-202	315	8.0	120.0	3.28	0.02	0.00
P-273	363	8.0	120.0	3.02	0.02	0.00
P-69	342	8.0	120.0	3.28	0.02	0.00
P-262	333	12.0	120.0	14.94	0.04	0.00
P-263	330	12.0	120.0	17.13	0.05	0.00
P-198	59	8.0	120.0	7.82	0.05	0.00
P-25	188	8.0	120.0	6.76	0.04	0.00
P-68	479	12.0	123.0	9.85	0.03	0.00
P-24	127	8.0	120.0	3.48	0.02	0.00
P-64	225	8.0	120.0	2.19	0.01	0.00
P-65	169	8.0	120.0	0.00	0.00	0.00
P-66	324	8.0	120.0	2.19	0.01	0.00
P-67	37	12.0	123.0	13.13	0.04	0.00
P-74	238	8.0	120.0	3.28	0.02	0.00
P-76	834	8.0	120.0	2.19	0.01	0.00
P-78	381	8.0	120.0	3.28	0.02	0.00
P-119	150	8.0	120.0	7.40	0.05	0.00
P-130	25	8.0	120.0	10.01	0.06	0.00
P-133	88	8.0	120.0	3.06	0.02	0.00
P-134	242	8.0	120.0	0.22	0.00	0.00
P-137	410	8.0	120.0	1.31	0.01	0.00

MAX DAY

105 PSI

Label	Length (ft)	Diameter (in)	Hazen-Williams C	Flow (Absolute) (gpm)	Velocity (Maximum) (ft/s)	Headloss (ft)
P-140	313	12.0	123.0	6.18	0.02	0.00
P-144	282	12.0	123.0	8.76	0.02	0.00
P-145	293	12.0	123.0	6.57	0.02	0.00
P-149	140	8.0	120.0	6.57	0.04	0.00
P-151	177	8.0	120.0	0.00	0.00	0.00
P-163	376	8.0	120.0	1.09	0.01	0.00
P-165	17	12.0	123.0	4.38	0.01	0.00
P-166	17	12.0	123.0	23.22	0.07	0.00
P-175	228	8.0	120.0	2.19	0.01	0.00
P-182	395	8.0	120.0	0.38	0.00	0.00
P-185	292	8.0	120.0	2.19	0.01	0.00
P-186	376	8.0	120.0	1.09	0.01	0.00
P-187	492	8.0	120.0	2.19	0.01	0.00
P-193	352	12.0	123.0	0.71	0.00	0.00
P-194	335	12.0	123.0	1.81	0.01	0.00
P-196	484	8.0	120.0	0.72	0.00	0.00
P-201	57	8.0	120.0	5.47	0.03	0.00
P-216	200	8.0	120.0	4.38	0.03	0.00
P-219	79	8.0	120.0	3.28	0.02	0.00
P-220	431	8.0	120.0	2.19	0.01	0.00
P-236	420	8.0	120.0	1.09	0.01	0.00
P-252	491	8.0	120.0	2.19	0.01	0.00
P-253	22	8.0	120.0	2.19	0.01	0.00
P-255	33	6.0	130.0	0.00	0.00	0.00
P-256	60	6.0	130.0	0.00	0.00	0.00
P-257	60	6.0	130.0	0.00	0.00	0.00
P-258	52	6.0	130.0	0.00	0.00	0.00
P-260	28	8.0	120.0	2.19	0.01	0.00
P-261	38	6.0	130.0	0.00	0.00	0.00
P-276	42	8.0	120.0	2.19	0.01	0.00
P-280	28	8.0	120.0	5.47	0.03	0.00

Label	Elevation (ft)	Demand (gpm)	Hydraulic Grade (ft)	Pressure (psi)
J-65	6,663.3	0.00	6,985.9	139.6
J-64	6,665.9	2.19	6,985.9	138.4
J-61	6,670.4	0.00	6,985.9	136.5
J-66	6,671.2	2.19	6,985.9	136.1
J-204	6,673.1	2.19	6,985.9	135.3
J-203	6,677.4	3.28	6,985.9	133.5
J-209	6,685.2	0.00	6,989.7	131.7
J-210	6,684.8	0.00	6,988.0	131.2
J-215	6,687.2	2.19	6,990.2	131.1
J-216	6,692.4	2.19	6,990.7	129.0
J-45	6,694.6	3.28	6,992.5	128.9
J-56	6,688.6	0.00	6,985.9	128.6
J-202	6,688.6	2.19	6,985.8	128.6
J-67	6,690.0	0.00	6,985.9	128.0
J-44	6,696.3	4.38	6,991.3	127.6
J-43	6,695.9	0.00	6,990.0	127.2
J-42	6,697.7	2.19	6,990.8	126.8
J-217	6,698.9	1.09	6,991.9	126.8
J-218	6,700.9	4.38	6,993.2	126.5
J-4	6,713.7	2.19	7,004.4	125.8
J-38	6,702.3	0.00	6,991.8	125.2
J-48	6,706.3	2.19	6,993.9	124.4
J-208	6,706.0	4.38	6,991.5	123.5
J-50	6,710.8	4.38	6,994.7	122.8
J-68	6,702.3	3.28	6,985.9	122.7
J-201	6,701.3	3.28	6,984.5	122.5
J-54	6,715.4	3.28	6,996.7	121.7
J-9	6,721.6	0.00	7,002.9	121.7
J-10	6,721.6	2.19	7,002.8	121.6
J-35	6,713.0	6.57	6,991.1	120.3
J-120	6,719.2	3.28	6,994.7	119.2
J-11	6,727.2	2.19	7,001.5	118.7
J-32	6,717.3	0.00	6,990.8	118.3
J-31	6,717.3	0.00	6,990.8	118.3
J-69	6,710.4	0.00	6,983.3	118.1
J-198	6,711.6	3.28	6,983.2	117.5

Label	Elevation (ft)	Demand (gpm)	Hydraulic Grade (ft)	Pressure (psi)
J-207	6,719.3	4.38	6,990.6	117.4
J-221	6,736.5	3.28	7,006.3	116.7
J-116	6,726.8	4.38	6,994.7	115.9
J-118	6,727.0	0.00	6,994.7	115.8
J-117	6,727.0	0.00	6,994.7	115.8
J-30	6,726.1	3.28	6,990.1	114.2
J-14	6,737.8	3.28	7,001.8	114.2
J-238	6,717.8	3.28	6,981.4	114.0
J-112	6,732.3	4.38	6,994.5	113.4
J-230	6,733.4	0.00	6,994.7	113.0
J-231	6,738.5	0.00	6,998.0	112.3
J-29	6,731.1	2.19	6,989.8	111.9
J-73	6,719.6	3.28	6,978.3	111.9
J-70	6,722.7	0.00	6,980.7	111.6
J-197	6,723.1	3.28	6,980.5	111.4
J-100	6,717.5	2.19	6,974.6	111.2
J-76	6,727.2	3.28	6,983.3	110.8
J-179	6,717.9	2.19	6,972.9	110.3
J-27	6,734.7	2.19	6,989.6	110.3
J-191	6,719.9	2.19	6,973.1	109.5
J-97	6,722.5	2.19	6,975.3	109.4
J-196	6,726.3	2.19	6,979.2	109.4
J-77	6,723.7	3.28	6,976.0	109.1
J-94	6,723.0	0.00	6,974.6	108.9
J-128	6,721.8	0.00	6,972.9	108.7
J-93	6,723.7	2.19	6,974.5	108.5
J-25	6,739.2	0.00	6,989.3	108.2
J-26	6,739.4	3.28	6,989.4	108.2
J-195	6,728.5	2.19	6,978.3	108.1
J-72	6,726.3	2.19	6,976.0	108.0
J-109	6,743.4	4.38	6,992.8	107.9
J-129	6,723.2	2.19	6,972.4	107.8
J-176	6,724.4	1.09	6,972.8	107.5
J-219	6,751.8	2.19	7,000.2	107.5
J-1	6,750.4	2.19	6,998.8	107.5
J-126	6,726.0	0.00	6,974.4	107.5

Label	Elevation (ft)	Demand (gpm)	Hydraulic Grade (ft)	Pressure (psi)
J-127	6,726.0	0.00	6,974.3	107.4
J-232	6,750.5	0.00	6,998.8	107.4
J-185	6,724.0	2.19	6,972.3	107.4
J-71	6,730.2	0.00	6,978.3	107.3
J-125	6,727.2	4.38	6,974.5	107.0
J-2	6,755.7	3.28	7,002.0	106.6
J-90	6,727.7	2.19	6,973.8	106.5
J-190	6,726.9	2.19	6,972.7	106.3
J-3	6,762.4	4.38	7,008.0	106.3
J-130	6,727.6	1.09	6,972.3	105.9
J-214	6,729.7	1.09	6,973.1	105.3
J-220	6,761.4	2.19	7,004.8	105.3
J-22	6,744.9	2.19	6,987.5	105.0
J-105	6,749.6	2.19	6,991.2	104.5
J-133	6,730.4	1.09	6,972.0	104.5
J-85	6,732.2	0.00	6,973.1	104.2
J-84	6,732.2	0.00	6,973.1	104.2
J-162	6,732.2	0.00	6,973.1	104.2
J-194	6,735.7	2.19	6,976.5	104.2
J-167	6,731.9	3.28	6,972.6	104.1
J-75	6,740.5	2.19	6,980.7	103.9
J-80	6,733.7	3.28	6,973.1	103.6
J-134	6,733.2	2.19	6,971.5	103.1
J-74	6,740.5	3.28	6,978.3	102.9
J-19	6,749.4	0.00	6,985.2	102.0
J-180	6,736.4	1.09	6,971.5	101.7
J-206	6,751.1	1.09	6,985.2	101.3
J-239	6,750.1	3.28	6,983.4	100.9
J-20	6,752.0	2.19	6,985.2	100.9
J-170	6,740.9	2.19	6,972.6	100.2
J-135	6,743.4	4.38	6,971.1	98.5
J-161	6,744.4	2.19	6,971.1	98.1
J-227	6,744.4	0.00	6,971.1	98.1
J-187	6,746.2	1.09	6,970.1	96.9
J-18	6,757.8	2.19	6,981.0	96.6
J-233	6,756.3	0.00	6,978.1	96.0

Label	Elevation (ft)	Demand (gpm)	Hydraulic Grade (ft)	Pressure (psi)
J-136	6,748.4	3.28	6,969.1	95.5
J-160	6,750.7	1.09	6,969.1	94.5
J-140	6,752.4	0.00	6,968.2	93.4
J-229	6,756.0	2.19	6,968.5	91.9
J-155	6,756.6	3.28	6,968.8	91.8
J-141	6,756.3	2.19	6,966.5	91.0
J-157	6,764.7	2.19	6,971.9	89.6
J-234	6,768.9	0.00	6,975.0	89.2
J-159	6,770.1	5.47	6,975.0	88.7
J-144	6,762.2	0.00	6,964.8	87.6
J-145	6,762.2	0.00	6,963.6	87.1
J-147	6,763.6	2.19	6,957.3	83.8
J-149	6,767.3	0.00	6,957.3	82.2
J-153	6,769.5	2.19	6,943.6	75.3
J-154	6,774.9	2.19	6,921.5	63.4
J-225	6,774.9	0.00	6,921.5	63.4

Label	Length (ft)	Diameter (in)	Hazen-Williams C	Flow (Absolute) (gpm)	Velocity (Maximum) (ft/s)	Headloss (ft)
P-255	33	6.0	130.0	1,500.00	17.02	23.70
P-252	491	8.0	120.0	1,502.19	9.59	22.10
P-153	304	8.0	120.0	1,504.38	9.60	13.70
P-149	140	8.0	120.0	1,506.57	9.62	6.33
P-55	993	12.0	123.0	1,352.20	3.84	4.88
P-274	1,028	8.0	120.0	360.13	2.30	3.29
P-248	522	8.0	120.0	511.95	3.27	3.20
P-279	519	8.0	120.0	508.79	3.25	3.14
P-159	517	8.0	120.0	506.60	3.23	3.11
P-281	493	8.0	120.0	514.27	3.28	3.05
P-278	479	8.0	120.0	514.27	3.28	2.96
P-49	903	12.0	123.0	1,077.59	3.06	2.91
P-247	451	8.0	120.0	509.76	3.25	2.74
P-286	379	8.0	120.0	516.45	3.30	2.36
P-20	358	8.0	120.0	523.02	3.34	2.28
P-229	614	12.0	123.0	1,112.69	3.16	2.10
P-264	257	12.0	123.0	1,739.68	4.94	2.01
P-53	403	12.0	123.0	1,348.91	3.83	1.97
P-250	467	12.0	123.0	1,220.07	3.46	1.90
P-107	572	8.0	120.0	366.19	2.34	1.88
P-287	293	8.0	120.0	519.74	3.32	1.85
P-245	559	8.0	120.0	364.51	2.33	1.83
P-284	555	12.0	123.0	1,087.52	3.09	1.82
P-23	280	8.0	120.0	525.21	3.35	1.80
P-199	557	12.0	123.0	1,067.82	3.03	1.77
P-227	515	12.0	123.0	1,112.69	3.16	1.76
P-145	293	12.0	123.0	1,506.57	4.27	1.75
P-114	514	8.0	120.0	372.75	2.38	1.75
P-144	282	12.0	123.0	1,508.76	4.28	1.70
P-249	407	12.0	123.0	1,223.36	3.47	1.66
P-4	387	12.0	123.0	1,217.88	3.45	1.57
P-111	463	8.0	120.0	368.38	2.35	1.54
P-172	765	12.0	123.0	817.86	2.32	1.48
P-126	577	8.0	120.0	316.43	2.02	1.45
P-275	437	8.0	120.0	362.32	2.31	1.41
P-206	427	12.0	123.0	1,078.76	3.06	1.38

Label	Length (ft)	Diameter (in)	Hazen-Williams C	Flow (Absolute) (gpm)	Velocity (Maximum) (ft/s)	Headloss (ft)
P-212	376	12.0	123.0	1,097.37	3.11	1.25
P-197	510	8.0	120.0	312.05	1.99	1.25
P-10	302	12.0	123.0	1,215.70	3.45	1.22
P-210	362	12.0	123.0	1,094.09	3.10	1.20
P-148	26	8.0	120.0	1,506.57	9.62	1.17
P-193	352	12.0	123.0	1,013.10	2.87	1.01
P-37	428	12.0	123.0	892.30	2.53	0.97
P-194	335	12.0	123.0	1,012.00	2.87	0.96
P-140	313	12.0	123.0	1,007.62	2.86	0.89
P-204	274	12.0	123.0	1,076.57	3.05	0.88
P-277	265	8.0	120.0	360.13	2.30	0.85
P-41	354	12.0	123.0	890.11	2.53	0.80
P-48	504	8.0	120.0	242.28	1.55	0.77
P-243	524	8.0	120.0	235.71	1.50	0.76
P-98	471	12.0	123.0	741.54	2.10	0.76
P-46	473	8.0	120.0	240.09	1.53	0.71
P-92	437	12.0	123.0	737.16	2.09	0.70
P-285	210	12.0	123.0	1,084.23	3.08	0.69
P-240	485	8.0	120.0	226.95	1.45	0.66
P-87	410	12.0	123.0	734.97	2.08	0.65
P-99	371	12.0	123.0	743.73	2.11	0.60
P-241	423	8.0	120.0	231.33	1.48	0.60
P-132	490	8.0	120.0	211.66	1.35	0.59
P-200	177	12.0	123.0	1,065.63	3.02	0.56
P-242	371	8.0	120.0	232.43	1.48	0.53
P-167	335	12.0	123.0	730.59	2.07	0.53
P-223	528	8.0	120.0	180.91	1.15	0.47
P-137	410	8.0	120.0	205.09	1.31	0.46
P-239	327	8.0	120.0	224.76	1.43	0.44
P-138	388	8.0	120.0	201.81	1.29	0.42
P-221	519	8.0	120.0	169.97	1.08	0.41
P-28	409	8.0	120.0	166.68	1.06	0.31
P-33	337	8.0	120.0	174.34	1.11	0.28
P-225	81	12.0	123.0	1,112.69	3.16	0.28
P-134	242	8.0	120.0	206.18	1.32	0.27
P-27	366	8.0	120.0	164.49	1.05	0.27

Label	Length (ft)	Diameter (in)	Hazen-Williams C	Flow (Absolute) (gpm)	Velocity (Maximum) (ft/s)	Headloss (ft)
P-262	333	12.0	120.0	501.13	1.42	0.27
P-263	330	12.0	120.0	503.32	1.43	0.27
P-11	486	8.0	120.0	138.69	0.89	0.27
P-224	282	8.0	120.0	185.29	1.18	0.26
P-17	413	8.0	120.0	141.97	0.91	0.24
P-237	168	8.0	120.0	222.58	1.42	0.22
P-222	233	8.0	120.0	174.34	1.11	0.19
P-205	56	12.0	123.0	1,082.05	3.07	0.18
P-272	49	8.0	120.0	377.13	2.41	0.17
P-198	59	8.0	120.0	309.86	1.98	0.14
P-25	188	8.0	120.0	162.31	1.04	0.14
P-196	484	8.0	120.0	94.92	0.61	0.13
P-176	499	8.0	120.0	92.73	0.59	0.13
P-95	69	12.0	123.0	739.35	2.10	0.11
P-182	395	8.0	120.0	96.02	0.61	0.11
P-9	26	12.0	123.0	1,217.88	3.45	0.11
P-133	88	8.0	120.0	209.47	1.34	0.10
P-129	41	8.0	120.0	312.05	1.99	0.10
P-211	29	12.0	123.0	1,099.56	3.12	0.10
P-24	127	8.0	120.0	159.02	1.02	0.09
P-207	27	12.0	123.0	1,090.80	3.09	0.09
P-130	25	8.0	120.0	312.05	1.99	0.06
P-166	17	12.0	123.0	734.97	2.08	0.03
P-30	25	8.0	120.0	174.34	1.11	0.02
P-125	479	8.0	120.0	24.67	0.16	0.01
P-122	284	8.0	120.0	21.38	0.14	0.00
P-273	363	8.0	120.0	17.00	0.11	0.00
P-119	150	8.0	120.0	21.38	0.14	0.00
P-215	241	8.0	120.0	6.57	0.04	0.00
P-120	27	8.0	120.0	21.38	0.14	0.00
P-82	376	8.0	120.0	4.38	0.03	0.00
P-216	200	8.0	120.0	4.38	0.03	0.00
P-219	79	8.0	120.0	3.28	0.02	0.00
P-64	225	8.0	120.0	2.19	0.01	0.00
P-65	169	8.0	120.0	0.00	0.00	0.00
P-66	324	8.0	120.0	2.19	0.01	0.00

Label	Length (ft)	Diameter (in)	Hazen-Williams C	Flow (Absolute) (gpm)	Velocity (Maximum) (ft/s)	Headloss (ft)
P-67	37	12.0	123.0	13.13	0.04	0.00
P-68	479	12.0	123.0	9.85	0.03	0.00
P-69	342	8.0	120.0	3.28	0.02	0.00
P-74	238	8.0	120.0	3.28	0.02	0.00
P-76	834	8.0	120.0	2.19	0.01	0.00
P-77	350	8.0	120.0	3.28	0.02	0.00
P-78	381	8.0	120.0	3.28	0.02	0.00
P-100	356	8.0	120.0	2.19	0.01	0.00
P-151	177	8.0	120.0	0.00	0.00	0.00
P-163	376	8.0	120.0	1.09	0.01	0.00
P-165	17	12.0	123.0	4.38	0.01	0.00
P-175	228	8.0	120.0	2.19	0.01	0.00
P-185	292	8.0	120.0	2.19	0.01	0.00
P-186	376	8.0	120.0	1.09	0.01	0.00
P-187	492	8.0	120.0	2.19	0.01	0.00
P-201	57	8.0	120.0	5.47	0.03	0.00
P-202	315	8.0	120.0	3.28	0.02	0.00
P-220	431	8.0	120.0	2.19	0.01	0.00
P-236	420	8.0	120.0	1.09	0.01	0.00
P-253	22	8.0	120.0	2.19	0.01	0.00
P-256	60	6.0	130.0	0.00	0.00	0.00
P-257	60	6.0	130.0	0.00	0.00	0.00
P-258	52	6.0	130.0	0.00	0.00	0.00
P-259	677	8.0	120.0	2.19	0.01	0.00
P-260	28	8.0	120.0	2.19	0.01	0.00
P-261	38	6.0	130.0	0.00	0.00	0.00
P-276	42	8.0	120.0	2.19	0.01	0.00
P-280	28	8.0	120.0	5.47	0.03	0.00

Label	Elevation (ft)	Demand (gpm)	Hydraulic Grade (ft)	Pressure (psi)
J-65	6,663.3	0.00	6,988.1	140.5
J-64	6,665.9	2.19	6,988.1	139.4
J-61	6,670.4	0.00	6,988.1	137.5
J-66	6,671.2	2.19	6,988.1	137.1
J-204	6,673.1	2.19	6,988.1	136.3
J-203	6,677.4	3.28	6,988.1	134.4
J-209	6,685.2	0.00	6,990.8	132.2
J-210	6,684.8	0.00	6,989.6	131.9
J-215	6,687.2	2.19	6,991.2	131.5
J-56	6,688.6	0.00	6,988.1	129.6
J-202	6,688.6	2.19	6,988.0	129.6
J-216	6,692.4	2.19	6,991.5	129.4
J-45	6,694.6	3.28	6,993.0	129.1
J-67	6,690.0	0.00	6,988.1	129.0
J-44	6,696.3	4.38	6,992.1	128.0
J-43	6,695.9	0.00	6,991.0	127.7
J-42	6,697.7	2.19	6,991.5	127.1
J-217	6,698.9	1.09	6,992.5	127.0
J-218	6,700.9	4.38	6,993.6	126.6
J-4	6,713.7	2.19	7,004.4	125.8
J-38	6,702.3	0.00	6,992.2	125.4
J-48	6,706.3	2.19	6,994.2	124.5
J-201	6,701.3	3.28	6,987.2	123.7
J-68	6,702.3	3.28	6,988.1	123.7
J-208	6,706.0	4.38	6,991.6	123.6
J-50	6,710.8	4.38	6,994.8	122.9
J-54	6,715.4	3.28	6,996.7	121.7
J-9	6,721.6	0.00	7,002.9	121.7
J-10	6,721.6	2.19	7,002.8	121.6
J-35	6,713.0	6.57	6,990.5	120.1
J-69	6,710.4	0.00	6,986.3	119.4
J-120	6,719.2	3.28	6,994.6	119.2
J-198	6,711.6	3.28	6,986.3	118.8
J-11	6,727.2	2.19	7,001.6	118.7
J-32	6,717.3	0.00	6,989.8	117.9
J-31	6,717.3	0.00	6,989.8	117.9

Label	Elevation (ft)	Demand (gpm)	Hydraulic Grade (ft)	Pressure (psi)
J-207	6,719.3	4.38	6,989.3	116.8
J-221	6,736.5	3.28	7,006.3	116.7
J-116	6,726.8	4.38	6,994.5	115.8
J-118	6,727.0	0.00	6,994.5	115.7
J-117	6,727.0	0.00	6,994.5	115.7
J-238	6,717.8	3.28	6,985.0	115.6
J-14	6,737.8	3.28	7,001.8	114.2
J-73	6,719.6	3.28	6,982.9	113.9
J-100	6,717.5	2.19	6,980.3	113.7
J-30	6,726.1	3.28	6,988.3	113.4
J-70	6,722.7	0.00	6,984.5	113.3
J-112	6,732.3	4.38	6,994.1	113.3
J-197	6,723.1	3.28	6,984.4	113.1
J-179	6,717.9	2.19	6,979.2	113.1
J-230	6,733.4	0.00	6,994.4	112.9
J-191	6,719.9	2.19	6,979.3	112.2
J-231	6,738.5	0.00	6,997.8	112.2
J-76	6,727.2	3.28	6,986.3	112.1
J-97	6,722.5	2.19	6,980.8	111.8
J-77	6,723.7	3.28	6,981.3	111.4
J-128	6,721.8	0.00	6,979.2	111.4
J-94	6,723.0	0.00	6,980.3	111.3
J-196	6,726.3	2.19	6,983.5	111.3
J-93	6,723.7	2.19	6,980.3	111.0
J-29	6,731.1	2.19	6,987.5	110.9
J-129	6,723.2	2.19	6,978.8	110.6
J-72	6,726.3	2.19	6,981.3	110.3
J-185	6,724.0	2.19	6,978.7	110.2
J-176	6,724.4	1.09	6,979.1	110.2
J-195	6,728.5	2.19	6,982.9	110.0
J-126	6,726.0	0.00	6,980.2	110.0
J-127	6,726.0	0.00	6,980.2	110.0
J-125	6,727.2	4.38	6,980.3	109.5
J-71	6,730.2	0.00	6,982.9	109.3
J-27	6,734.7	2.19	6,986.9	109.1
J-190	6,726.9	2.19	6,979.0	109.1

Label	Elevation (ft)	Demand (gpm)	Hydraulic Grade (ft)	Pressure (psi)
J-90	6,727.7	2.19	6,979.8	109.1
J-130	6,727.6	1.09	6,978.7	108.7
J-214	6,729.7	1.09	6,979.3	108.0
J-219	6,751.8	2.19	7,000.1	107.4
J-1	6,750.4	2.19	6,998.7	107.4
J-232	6,750.5	0.00	6,998.7	107.4
J-133	6,730.4	1.09	6,978.6	107.4
J-109	6,743.4	4.38	6,991.5	107.3
J-85	6,732.2	0.00	6,979.3	106.9
J-84	6,732.2	0.00	6,979.3	106.9
J-162	6,732.2	0.00	6,979.3	106.9
J-26	6,739.4	3.28	6,986.5	106.9
J-25	6,739.2	0.00	6,986.3	106.9
J-167	6,731.9	3.28	6,979.0	106.9
J-2	6,755.7	3.28	7,002.0	106.6
J-194	6,735.7	2.19	6,981.6	106.4
J-3	6,762.4	4.38	7,008.0	106.3
J-80	6,733.7	3.28	6,979.3	106.3
J-134	6,733.2	2.19	6,978.2	106.0
J-75	6,740.5	2.19	6,984.5	105.6
J-220	6,761.4	2.19	7,004.8	105.3
J-74	6,740.5	3.28	6,982.9	104.9
J-180	6,736.4	1.09	6,978.2	104.6
J-105	6,749.6	2.19	6,989.1	103.6
J-22	6,744.9	2.19	6,983.0	103.0
J-170	6,740.9	2.19	6,979.0	103.0
J-135	6,743.4	4.38	6,978.0	101.5
J-161	6,744.4	2.19	6,978.0	101.1
J-227	6,744.4	0.00	6,978.0	101.1
J-187	6,746.2	1.09	6,977.3	100.0
J-19	6,749.4	0.00	6,978.9	99.3
J-136	6,748.4	3.28	6,976.6	98.7
J-206	6,751.1	1.09	6,978.9	98.6
J-20	6,752.0	2.19	6,978.9	98.2
J-160	6,750.7	1.09	6,976.6	97.8
J-239	6,750.1	3.28	6,975.6	97.6

Label	Elevation (ft)	Demand (gpm)	Hydraulic Grade (ft)	Pressure (psi)
J-140	6,752.4	0.00	6,976.0	96.8
J-141	6,756.3	2.19	6,976.0	95.1
J-229	6,756.0	2.19	6,975.4	94.9
J-155	6,756.6	3.28	6,974.7	94.4
J-144	6,762.2	0.00	6,976.0	92.5
J-145	6,762.2	0.00	6,976.0	92.5
J-18	6,757.8	2.19	6,971.3	92.4
J-147	6,763.6	2.19	6,976.0	91.9
J-233	6,756.3	0.00	6,965.9	90.7
J-149	6,767.3	0.00	6,976.0	90.3
J-153	6,769.5	2.19	6,976.0	89.4
J-157	6,764.7	2.19	6,967.5	87.8
J-154	6,774.9	2.19	6,976.0	87.0
J-225	6,774.9	0.00	6,976.0	87.0
J-234	6,768.9	0.00	6,960.4	82.8
J-159	6,770.1	5.47	6,959.1	81.8

Label	Length (ft)	Diameter (in)	Hazen-Williams C	Flow (Absolute) (gpm)	Velocity (Maximum) (ft/s)	Headloss (ft)
P-256	60	6.0	130.0	1,500.00	17.02	9.44
P-159	517	8.0	120.0	797.14	5.09	7.20
P-279	519	8.0	120.0	794.95	5.07	7.18
P-281	493	8.0	120.0	710.52	4.54	5.54
P-278	479	8.0	120.0	710.52	4.54	5.39
P-55	993	12.0	123.0	1,344.50	3.81	4.82
P-286	379	8.0	120.0	712.71	4.55	4.29
P-20	358	8.0	120.0	719.28	4.59	4.11
P-274	1,028	8.0	120.0	367.82	2.35	3.42
P-287	293	8.0	120.0	715.99	4.57	3.35
P-23	280	8.0	120.0	721.47	4.60	3.24
P-248	522	8.0	120.0	513.27	3.28	3.22
P-107	572	8.0	120.0	458.03	2.92	2.85
P-247	451	8.0	120.0	511.08	3.26	2.75
P-114	514	8.0	120.0	464.59	2.97	2.64
P-49	903	12.0	123.0	1,011.19	2.87	2.59
P-111	463	8.0	120.0	460.22	2.94	2.33
P-264	257	12.0	123.0	1,739.68	4.94	2.01
P-53	403	12.0	123.0	1,341.22	3.80	1.95
P-245	559	8.0	120.0	372.20	2.38	1.90
P-250	467	12.0	123.0	1,218.75	3.46	1.89
P-249	407	12.0	123.0	1,222.04	3.47	1.66
P-4	387	12.0	123.0	1,216.57	3.45	1.56
P-275	437	8.0	120.0	370.01	2.36	1.47
P-229	614	12.0	123.0	916.43	2.60	1.47
P-284	555	12.0	123.0	891.26	2.53	1.26
P-280	28	8.0	120.0	1,505.47	9.61	1.25
P-227	515	12.0	123.0	916.43	2.60	1.23
P-10	302	12.0	123.0	1,214.38	3.44	1.21
P-199	557	12.0	123.0	871.56	2.47	1.21
P-223	528	8.0	120.0	285.33	1.82	1.10
P-221	519	8.0	120.0	274.39	1.75	1.00
P-172	765	12.0	123.0	661.37	1.88	1.00
P-126	577	8.0	120.0	258.10	1.65	1.00
P-206	427	12.0	123.0	882.51	2.50	0.95
P-277	265	8.0	120.0	367.82	2.35	0.88

Label	Length (ft)	Diameter (in)	Hazen-Williams C	Flow (Absolute) (gpm)	Velocity (Maximum) (ft/s)	Headloss (ft)
P-212	376	12.0	123.0	901.11	2.56	0.87
P-197	510	8.0	120.0	253.72	1.62	0.85
P-210	362	12.0	123.0	897.83	2.55	0.83
P-28	409	8.0	120.0	271.10	1.73	0.77
P-27	366	8.0	120.0	268.91	1.72	0.68
P-193	352	12.0	123.0	816.84	2.32	0.68
P-33	337	8.0	120.0	278.76	1.78	0.67
P-37	428	12.0	123.0	721.49	2.05	0.66
P-262	333	12.0	120.0	802.61	2.28	0.65
P-194	335	12.0	123.0	815.74	2.31	0.64
P-263	330	12.0	120.0	800.42	2.27	0.64
P-48	504	8.0	120.0	216.84	1.38	0.63
P-243	524	8.0	120.0	210.27	1.34	0.62
P-204	274	12.0	123.0	880.32	2.50	0.61
P-224	282	8.0	120.0	289.71	1.85	0.60
P-140	313	12.0	123.0	811.37	2.30	0.60
P-46	473	8.0	120.0	214.65	1.37	0.58
P-41	354	12.0	123.0	719.30	2.04	0.54
P-240	485	8.0	120.0	201.51	1.29	0.53
P-98	471	12.0	123.0	603.61	1.71	0.52
P-241	423	8.0	120.0	205.89	1.31	0.48
P-92	437	12.0	123.0	599.24	1.70	0.48
P-285	210	12.0	123.0	887.98	2.52	0.47
P-222	233	8.0	120.0	278.76	1.78	0.46
P-87	410	12.0	123.0	597.05	1.69	0.44
P-242	371	8.0	120.0	206.99	1.32	0.43
P-99	371	12.0	123.0	605.80	1.72	0.41
P-132	490	8.0	120.0	171.88	1.10	0.40
P-200	177	12.0	123.0	869.37	2.47	0.38
P-167	335	12.0	123.0	592.67	1.68	0.36
P-239	327	8.0	120.0	199.33	1.27	0.35
P-25	188	8.0	120.0	266.72	1.70	0.35
P-137	410	8.0	120.0	165.32	1.06	0.31
P-138	388	8.0	120.0	162.03	1.03	0.28
P-272	49	8.0	120.0	468.97	2.99	0.25
P-11	486	8.0	120.0	132.32	0.84	0.24

Label	Length (ft)	Diameter (in)	Hazen-Williams C	Flow (Absolute) (gpm)	Velocity (Maximum) (ft/s)	Headloss (ft)
P-24	127	8.0	120.0	263.44	1.68	0.23
P-17	413	8.0	120.0	135.60	0.87	0.22
P-225	81	12.0	123.0	916.43	2.60	0.19
P-134	242	8.0	120.0	166.41	1.06	0.19
P-237	168	8.0	120.0	197.14	1.26	0.18
P-125	479	8.0	120.0	108.81	0.69	0.17
P-205	56	12.0	123.0	885.79	2.51	0.13
P-273	363	8.0	120.0	101.15	0.65	0.11
P-9	26	12.0	123.0	1,216.57	3.45	0.11
P-198	59	8.0	120.0	251.53	1.61	0.10
P-122	284	8.0	120.0	105.53	0.67	0.09
P-196	484	8.0	120.0	76.36	0.49	0.09
P-176	499	8.0	120.0	74.17	0.47	0.09
P-95	69	12.0	123.0	601.43	1.71	0.08
P-182	395	8.0	120.0	77.46	0.49	0.07
P-133	88	8.0	120.0	169.70	1.08	0.07
P-129	41	8.0	120.0	253.72	1.62	0.07
P-211	29	12.0	123.0	903.30	2.56	0.07
P-207	27	12.0	123.0	894.54	2.54	0.06
P-30	25	8.0	120.0	278.76	1.78	0.05
P-119	150	8.0	120.0	105.53	0.67	0.05
P-130	25	8.0	120.0	253.72	1.62	0.04
P-166	17	12.0	123.0	597.05	1.69	0.02
P-120	27	8.0	120.0	105.53	0.67	0.01
P-64	225	8.0	120.0	2.19	0.01	0.00
P-153	304	8.0	120.0	4.38	0.03	0.00
P-149	140	8.0	120.0	6.57	0.04	0.00
P-66	324	8.0	120.0	2.19	0.01	0.00
P-259	677	8.0	120.0	2.19	0.01	0.00
P-215	241	8.0	120.0	6.57	0.04	0.00
P-82	376	8.0	120.0	4.38	0.03	0.00
P-74	238	8.0	120.0	3.28	0.02	0.00
P-201	57	8.0	120.0	5.47	0.03	0.00
P-219	79	8.0	120.0	3.28	0.02	0.00
P-77	350	8.0	120.0	3.28	0.02	0.00
P-78	381	8.0	120.0	3.28	0.02	0.00

Label	Length (ft)	Diameter (in)	Hazen-Williams C	Flow (Absolute) (gpm)	Velocity (Maximum) (ft/s)	Headloss (ft)
P-163	376	8.0	120.0	1.09	0.01	0.00
P-65	169	8.0	120.0	0.00	0.00	0.00
P-67	37	12.0	123.0	13.13	0.04	0.00
P-68	479	12.0	123.0	9.85	0.03	0.00
P-69	342	8.0	120.0	3.28	0.02	0.00
P-76	834	8.0	120.0	2.19	0.01	0.00
P-100	356	8.0	120.0	2.19	0.01	0.00
P-144	282	12.0	123.0	8.76	0.02	0.00
P-145	293	12.0	123.0	6.57	0.02	0.00
P-148	26	8.0	120.0	6.57	0.04	0.00
P-151	177	8.0	120.0	0.00	0.00	0.00
P-165	17	12.0	123.0	4.38	0.01	0.00
P-175	228	8.0	120.0	2.19	0.01	0.00
P-185	292	8.0	120.0	2.19	0.01	0.00
P-186	376	8.0	120.0	1.09	0.01	0.00
P-187	492	8.0	120.0	2.19	0.01	0.00
P-202	315	8.0	120.0	3.28	0.02	0.00
P-216	200	8.0	120.0	4.38	0.03	0.00
P-220	431	8.0	120.0	2.19	0.01	0.00
P-236	420	8.0	120.0	1.09	0.01	0.00
P-252	491	8.0	120.0	2.19	0.01	0.00
P-253	22	8.0	120.0	2.19	0.01	0.00
P-255	33	6.0	130.0	0.00	0.00	0.00
P-257	60	6.0	130.0	0.00	0.00	0.00
P-258	52	6.0	130.0	0.00	0.00	0.00
P-260	28	8.0	120.0	2.19	0.01	0.00
P-261	38	6.0	130.0	0.00	0.00	0.00
P-276	42	8.0	120.0	2.19	0.01	0.00

Saddle Ranch Master Utility Report
Water System Demands

Junction	# Units Served	Average Day (GPD)	Average Day (GPM)	Max Day (GPD)	Max Day (GPM)
1	2	1,190	0.83	3,154	2.19
2	3	1,785	1.24	4,730	3.28
3	4	2,380	1.65	6,307	4.38
4	2	1,190	0.83	3,154	2.19
9	0	0	0.00	0	0.00
10	2	1,190	0.83	3,154	2.19
11	2	1,190	0.83	3,154	2.19
14	3	1,785	1.24	4,730	3.28
18	2	1,190	0.83	3,154	2.19
19	0	0	0.00	0	0.00
20	1	595	0.41	1,577	1.09
22	2	1,190	0.83	3,154	2.19
25	0	0	0.00	0	0.00
26	3	1,785	1.24	4,730	3.28
27	2	1,190	0.83	3,154	2.19
29	2	1,190	0.83	3,154	2.19
30	3	1,785	1.24	4,730	3.28
31	0	0	0.00	0	0.00
32	0	0	0.00	0	0.00
35	6	3,570	2.48	9,461	6.57
38	0	0	0.00	0	0.00
42	2	1,190	0.83	3,154	2.19
43	0	0	0.00	0	0.00
44	4	2,380	1.65	6,307	4.38
45	3	1,785	1.24	4,730	3.28
48	2	1,190	0.83	3,154	2.19
50	4	2,380	1.65	6,307	4.38
54	3	1,785	1.24	4,730	3.28
56	0	0	0.00	0	0.00
61	0	0	0.00	0	0.00
64	2	1,190	0.83	3,154	2.19
65	0	0	0.00	0	0.00
66	2	1,190	0.83	3,154	2.19
67	0	0	0.00	0	0.00
68	3	1,785	1.24	4,730	3.28
69	0	0	0.00	0	0.00
70	0	0	0.00	0	0.00
71	0	0	0.00	0	0.00
72	2	1,190	0.83	3,154	2.19
73	3	1,785	1.24	4,730	3.28
74	3	1,785	1.24	4,730	3.28
75	2	1,190	0.83	3,154	2.19
76	3	1,785	1.24	4,730	3.28
77	3	1,785	1.24	4,730	3.28
80	3	1,785	1.24	4,730	3.28
84	0	0	0.00	0	0.00
85	0	0	0.00	0	0.00
90	2	1,190	0.83	3,154	2.19
93	2	1,190	0.83	3,154	2.19
94	0	0	0.00	0	0.00
97	2	1,190	0.83	3,154	2.19

Junction	# Units Served	Average Day (GPD)	Average Day (GPM)	Max Day (GPD)	Max Day (GPM)
100	2	1,190	0.83	3,154	2.19
105	2	1,190	0.83	3,154	2.19
109	4	2,380	1.65	6,307	4.38
112	4	2,380	1.65	6,307	4.38
116	4	2,380	1.65	6,307	4.38
117	0	0	0.00	0	0.00
118	0	0	0.00	0	0.00
120	3	1,785	1.24	4,730	3.28
125	4	2,380	1.65	6,307	4.38
126	0	0	0.00	0	0.00
127	0	0	0.00	0	0.00
128	0	0	0.00	0	0.00
129	2	1,190	0.83	3,154	2.19
130	1	595	0.41	1,577	1.09
133	1	595	0.41	1,577	1.09
134	2	1,190	0.83	3,154	2.19
135	4	2,380	1.65	6,307	4.38
136	3	1,785	1.24	4,730	3.28
140	0	0	0.00	0	0.00
141	2	1,190	0.83	3,154	2.19
144	0	0	0.00	0	0.00
145	0	0	0.00	0	0.00
147	2	1,190	0.83	3,154	2.19
149	0	0	0.00	0	0.00
153	2	1,190	0.83	3,154	2.19
154	2	1,190	0.83	3,154	2.19
155	3	1,785	1.24	4,730	3.28
157	2	1,190	0.83	3,154	2.19
159	5	2,975	2.07	7,884	5.47
160	1	595	0.41	1,577	1.09
161	2	1,190	0.83	3,154	2.19
162	0	0	0.00	0	0.00
167	3	1,785	1.24	4,730	3.28
170	2	1,190	0.83	3,154	2.19
176	1	595	0.41	1,577	1.09
179	2	1,190	0.83	3,154	2.19
180	1	595	0.41	1,577	1.09
185	2	1,190	0.83	3,154	2.19
187	1	595	0.41	1,577	1.09
190	2	1,190	0.83	3,154	2.19
191	2	1,190	0.83	3,154	2.19
194	2	1,190	0.83	3,154	2.19
195	2	1,190	0.83	3,154	2.19
196	2	1,190	0.83	3,154	2.19
197	3	1,785	1.24	4,730	3.28
198	3	1,785	1.24	4,730	3.28
201	3	1,785	1.24	4,730	3.28
202	2	1,190	0.83	3,154	2.19
203	3	1,785	1.24	4,730	3.28
204	2	1,190	0.83	3,154	2.19
206	1	595	0.41	1,577	1.09
207	4	2,380	1.65	6,307	4.38
208	4	2,380	1.65	6,307	4.38
209	0	0	0.00	0	0.00

Junction	# Units Served	Average Day (GPD)	Average Day (GPM)	Max Day (GPD)	Max Day (GPM)
210	0	0	0.00	0	0.00
214	1	595	0.41	1,577	1.09
215	2	1,190	0.83	3,154	2.19
216	2	1,190	0.83	3,154	2.19
217	1	595	0.41	1,577	1.09
218	4	2,380	1.65	6,307	4.38
219	2	1,190	0.83	3,154	2.19
220	2	1,190	0.83	3,154	2.19
221	3	1,785	1.24	4,730	3.28
225	0	0	0.00	0	0.00
227	0	0	0.00	0	0.00
229	2	1,190	0.83	3,154	2.19
230	0	0	0.00	0	0.00
231	0	0	0.00	0	0.00
232	0	0	0.00	0	0.00
233	0	0	0.00	0	0.00
234	0	0	0.00	0	0.00
238	3	1,785	1.24	4,730	3.28
239	3	1,785	1.24	4,730	3.28
Total	218	129,710	90.08	343,732	238.70

APPENDIX C
REFERENCE MATERIAL

Hydraulic Analysis Report Modeling Criteria

Junction Inputs

Water Demands

Land use categories with typical densities and water demands are summarized in Tables 1 through 4.

Specific land use information with estimated dwelling units per acre should be use when available. If the number of dwelling units per acre is not known, the demand rate for different land uses should be calculated on a per acre basis.

Based on a mix of 60% Residential, 30% Commercial and 10% Parks, the water demand for raw land without specific land use, should be 1800/Gal/Day/Acre.

Table 1 - Residential Demand			
Classification	DU/Acre	Avg Gal/Day/Unit	Avg Gal/Day/Acre
Multi Family	6+	290	1800
Medium Residential	6+	290	1800
Low Residential	2 to 5	475	1700
Very Low Residential	<2	700	750

Note: Dwelling Units per acre are based on use of 60% of an acre being buildable.

Table 2 - Commercial Demand

Classification	Avg Gal/Day/Acre
Retail	1500
Restaurant	3900
Office	1900
Lodging	2500
Convenience Grocery Stores	6500
Car Wash	9000
Storage/Warehouse	1700
Fitness Club	2500
Office/Industrial Average	1800
Raw Land w/out Specific Land Use	1800

Table 3 - School Demand

School Type	Average Acres	Average Gal/Day/Acre
Elementary School	10	2000
Middle School	15	2000
High School	40	2000

Note – School usage will vary depending upon installation of sports fields. The above use numbers are based on sports fields being installed. However, each school will vary and a more accurate water demand can be determined when the number and type of sports fields are determined for the individual site.

Table 4 - Parks/Recreational Demand

Use Type	Average Gal/Day/Acre
Golf Course	2200
Neighborhood Park	2200
Community Park	2200
Trail	100
Open Space	100

Input average day demands to model junctions. Input demands in the model should be expressed in million gallons per day, mgd. Model output demands can be expressed as mgd, and/or gpm. Demands should be entered only at junctions on pipes 16" or smaller, and only where demands are expected. Demands are not added at junctions on pipes greater than 16" as these pipes are typically transmission lines. Do not add demands on hydrant nodes, unless it is at the end of a street or cul de sac.

To model max day demands, use the maximum day to average day (MD/AD) peaking factors as shown in Table 5, or as determined by Water Planning & Design and as specified on HGL Response Form. Peaking factors are pressure zone specific.

Table 5 - Peaking Factors

Pressure Zone	MD/AD
BRGT	2.65
TMPL	2.65
NFLD	2.50
HILN	2.20
LOLN	2.00

Note: From 2009 Finished Water Master Plan Update

Junction Elevation

Use proposed ground surface elevation

For elevations at hydrants, add 2 feet to the hydrant flange elevation

Pipe Inputs

Diameter

For DIP and PVC, use nominal diameters, for HDPE DR 9, use inside diameters.

HDPE DR 9 Nominal diameter, (inches)	Inside Diameter, ID, (inches)
6	5.274
8	6.917
12	10.090
16	13.302
20	16.528
24	19.722

Roughness

Nominal Pipe Diameter (inches)	Hazen- Williams Roughness Coefficients (C)
6	118
8	120
12	123
16	124
24	126
36, 42	128
54	130

Minor Losses

Enter minor losses on hydrant laterals only. Use 4.1 on hydrant laterals.

Pressure Requirements

- Maintain a minimum pressure of 60 psi under maximum day demands.
- Maintain a minimum pressure of 20 psi under maximum day demands plus fire flow.
- Pressure should not exceed 180 psi. To avoid pressures greater than 180 psi, PRV's may be required. When pressure exceeds 170 psi, DIP is required. Contact Water Planning and Design if pressures exceed 170 psi.

Head Loss and Velocity Requirements

- Size pipelines for the worst-case scenario of maximum day demand conditions plus fire flow.
- Maintain headloss less than or equal to 3 ft/1000 ft for 8", 12" and 16" pipelines, for maximum day conditions without fire flow.
- Desired velocities are <5 ft/sec for maximum day conditions.
- Desired maximum velocities of 20 ft/sec under maximum day conditions plus fire flow, or other emergency conditions.

Fire Flow Modeling Criteria

Fire flow calculations will be required at all critical hydrants under full-build out conditions and partial build out conditions. Critical hydrants are typically those with the largest required fire flow, and/or the highest flange elevation, in each building area and/or phase. Modeled fire flows should be reduced by 10% then rounded down to whole hundred. For example, a modeled fire flow of 2,663 gpm reduced by 10% is 2,396.7 gpm, which rounded down to whole hundred is 2,300 gpm.