

**FINAL UTILITY REPORT  
FOR  
SADDLEHORN RANCH**

Prepared for:

**RIO PROPERTY GROUP, LLC**  
**2495 Rigdon Street**  
Napa, California 94558  
(707) 365-6891  
Contact, Brady Williams

Prepared by:

**JR ENGINEERING, LLC**  
5475 Tech Center Drive, Suite 235  
Colorado Springs, Colorado 80919  
(719) 593-2593  
Contact: Mike Bramlett, P.E.

September 18, 2019

Job Number 25142.00

ENGINEER'S STATEMENT:

The attached utility plan and report were prepared under my direction and supervision and are correct to the best of my knowledge and belief. Said utility report has been prepared according to the criteria established by Colorado Springs Utilities Criteria and said report is in conformity with the master plans for water distribution and wastewater collection for the affected area. I accept responsibility for any liability caused by any negligent acts, errors, or omissions on my part in preparing this report.

---

Mike Bramlett, Colorado P.E. # 32314  
For and On Behalf of JR Engineering, LLC

---

Date

## **Table of Contents**

<b>GENERAL LOCATION AND DESCRIPTION.....</b>	<b>1</b>
<b>WATER SYSTEM ANALYSIS.....</b>	<b>2</b>
<i>Proposed Water System.....</i>	<i>2</i>
<i>Hydraulic Design.....</i>	<i>3</i>
<i>Design Scenarios.....</i>	<i>4</i>
<b>CONCLUSION.....</b>	<b>6</b>
<b>REFERENCES.....</b>	<b>7</b>

### **APPENDIX**

**A: VICINITY MAP**

**B: WATER SYSTEM DATA**

**C: REFERENCE MATERIAL**

## **GENERAL LOCATION AND DESCRIPTION**

This report presents the utility system analysis for the water distribution for the proposed Saddlehorn Ranch development. The Saddlehorn Ranch development has not been referenced in any previous reports. Proposed lot counts and known densities are used in calculations presented in this report for planning areas that were previously based on approved planning densities. This report has been prepared to demonstrate compliance with all necessary criteria.

### ***Project Location and Description***

This report presents the utility system analysis for the water system for Saddlehorn Ranch. Saddlehorn Ranch is comprised of approximately 834 developed acres and is located in portions of Section 3 and Section 10 of Township 13 South, Range 65 West of the 6<sup>th</sup> P.M., El Paso County, Colorado. This report accounts for a total of 223 SFE, 51 SFEs for Filing 1, and 172 SFE for future Filings. The site is bounded on the west by Curtis Road, on the east by undeveloped land, on the south by undeveloped land and low density houses, and on the north by Judge Orr Road. See Appendix A for the Site Vicinity Map.

Easements or tracts necessary for utilities will be provided at time of final platting in accordance with the El Paso County standards regarding location and size of easements and tracts.

The purpose of this study is to analyze the water demands of the proposed development. The water system was analyzed for 3 scenarios; Average Day, Max Day, and Max Day Plus Fire, at 2 different pressures for a total of 6 scenarios. The results of this study have been compared to Colorado Springs Utilities (CSU) Hydraulic Analysis Report Modeling Criteria to demonstrate design compliance. See Appendix B for relevant exhibits.

All proposed on-site lots will use septic systems in lieu of a sanitary sewer, therefore no analysis of a sanitary network was done for this development.

## **WATER SYSTEM ANALYSIS**

### ***Existing Water System***

There is currently a single 12" PVC waterline running parallel approximately 50 feet to the south of the northern property line. The line will not be used by any onsite lots, but will remain in place. A map of the site and the existing water mains can be seen in Appendix B.

### ***Proposed Water System***

A total of 223 SFE's are estimated for the proposed water system collection for the Saddlehorn development. There are 51 SFE's from Filing 1 and 172 SFE's from future filings. The proposed water distribution system for the Saddlehorn Ranch development will be fed by an onsite water treatment plant to be designed by others. The proposed water system will include a series of 12 and 8-inch PVC water mains and will be looped to allow for all areas to be serviced with a critical pipe out of service. The total required storage volume at full build out is 353,192 gallons. The site's elevation ranges approximately 115 feet from 6,660 to 6,775 feet. The WaterCAD model map as well as junction demands and storage volumes have been provided within Appendix B. The proposed water system is being designed as its own metro district which future filings and potentially adjacent developments will be a part of.

### ***Hydraulic Design***

Design criteria used to analyze the hydraulics of the site was established using the "Colorado Springs Utilities Waterline Extension and Service Standards." The following is a summary of the criteria.

<u>Hydraulic Condition</u>	<u>Pressure (psi)</u>
Minimum dynamic pressures (based on 20% tank stage):	
Max Daily Demand + fire flow	20
Peak Hour Demand	60
<u>Maximum Velocities and Head losses</u>	<u>Unit</u>

Maximum velocity with Max Day Demands	5 fps
Maximum velocity with Max Day + Fire Flow Demands	20 fps
Maximum head loss through 8", 12", 16" (transmission):	3.0ft/1000ft
Hazen Williams 'C' factor: 120 ( 8" PVC), 123 (12" PVC)	
Required Fire Flow = 1,500 gpm	

### ***Domestic Demand Design***

Water System demands were established using the "Colorado Springs Utilities Waterline Extension and Service Standards." Design criteria for the analysis are summarized in Table 1 below.

Table 1: Water System Design Criteria

<b>Type of Use</b>	<b>Average Daily Flow (gpd/DU)</b>	<b>Peaking Factor (Max Day/Avg. Day)</b>
Residential: Single Family	595	2.65

### ***Design Scenarios***

The water distribution system utilized Bentley's WaterCAD V.8 to model and analyze the system. Three scenarios were completed; one for Average Daily Flow, one for Max Day flow, and one for Max Day flow plus fire flow. The scenarios were analyzed at two different pressures, 85psi and 105psi, which are the proposed upper and lower bounds of operating pressure for the proposed water treatment plant to be designed by others. To determine the operating pressures, a minimum ground elevation of 6768.50 was assumed for the water treatment plant and a conversion factor of 2.3ft/psi was applied. The tank HGL for the model was 6964.0 and 7010.0 for the 85psi and 105psi scenarios, respectively. The WaterCAD model map showing the analyses area is included within Appendix B. Since the development is outside of any existing pressure zone, none was used to determine required pressure in the tank, while the peaking factor was assumed to be 2.65. Specific site demands for scenarios of average day, max day, and fire flows are found in Appendix B and a summary of the results are found in the tables below.

**Table 1: Filing 15 Total Demand Summary Table**

<b>Overall Water Demand</b>				
<b>Dwelling Units</b>	<b>Unit Demand (gpd/DU)</b>	<b>Avg. Day Demand (gpd)</b>	<b>Peaking Factor</b>	<b>Max Day Demand (gpd)</b>
224	595	132,685	2.65	351,615

### 85 PSI

#### *Average Day*

Average demands were assigned to the system consistent with those presented in Appendix B. The minimum pressure within the system for the max day scenario was calculated to be at junction J-225 at 81.8 psi. This exceeds the minimum of 60 psi. The maximum pressure within the system occurred at junction J-65 at 130.1 psi, and is below the maximum pressure of 180 psi. The maximum velocity in this scenario of 0.26 fps occurred in pipe P-264. The maximum allowable velocity within a pipe as designated by the CSU standards is 5 fps. A maximum absolute headloss of 0.02 ft. was calculated at pipe P-55. The maximum pipe loss as designated by CSU standards is 3ft/ 1000ft.

#### *Max Day*

Max day demands were assigned to the system consistent with those presented in Appendix B. The minimum pressure within the system for the max day scenario was calculated to be at junction J-225 at 81.6 psi. This exceeds the minimum of 60 psi. The maximum pressure within the system occurred at junction J-65 at 129.9 psi, and is below the maximum pressure of 180 psi. The maximum velocity in this scenario of 0.70 fps occurred in pipe P-264. The maximum allowable velocity within a pipe as designated by the CSU standards is 5 fps. A maximum absolute headloss of 0.11 ft. was calculated at pipe P-55. The maximum pipe loss as designated by CSU standards is 3ft/ 1000ft.

*Max Day + Fire Flow*

The fire flow used was governed by the IFC s Table B105.1 “minimum required fire-flow and flow duration for buildings”. The required storage for fire flow represents 1,500 gpm for a two-hour period of time or 180,000 gallons. Max day demands were assigned to the system consistent with those presented in Appendix B. Additionally, a fire flow of 1,500 gpm was iteratively applied to individual proposed hydrant locations in order to determine the worst case condition. Under all scenarios, all points in the system exceeded the required 20 psi residual pressure. The max day plus the fire flow scenario that produced the lowest residual pressure in the system occurred when the fire flow of 1,500 gpm was applied to J-225 resulting in a residual pressure of 43.5 psi at J-225. The maximum velocity in this scenario of 9.62 fps occurred in pipe P-148. The maximum allowable velocity within a pipe as designated by the CSU standards is 20 fps. Flow test results demonstrate that the proposed system is capable of providing the required flows under modeled conditions. Refer to Appendix B for both the flow test and pressure test results.

*105 PSI**Average Day*

Average demands were assigned to the system consistent with those presented in Appendix B. The minimum pressure within the system for the max day scenario was calculated to be at junction J-225 at 101.7 psi. This exceeds the minimum of 60 psi. The maximum pressure within the system occurred at junction J-65 at 150.0 psi, and is below the maximum pressure of 180 psi. The maximum velocity in this scenario of 0.26 fps occurred in pipe P-264. The maximum allowable velocity within a pipe as designated by the CSU standards is 5 fps. A maximum absolute headloss of 0.02 ft. was calculated at pipe P-55. The maximum pipe loss as designated by CSU standards is 3ft/ 1000ft.

*Max Day*

Max day demands were assigned to the system consistent with those presented in Appendix B. The minimum pressure within the system for the max day scenario was calculated to be at junction J-225



at 101.5 psi. This exceeds the minimum of 60 psi. The maximum pressure within the system occurred at junction J-65 at 149.8 psi, and is below the maximum pressure of 180 psi. The maximum velocity in this scenario of 0.70 fps occurred in pipe P-264. The maximum allowable velocity within a pipe as designated by the CSU standards is 5 fps. A maximum absolute headloss of 0.11 ft. was calculated at pipe P-55. The maximum pipe loss as designated by CSU standards is 3ft/ 1000ft.

#### *Max Day + Fire Flow*

The fire flow used was governed by the IFC s Table B105.1 “minimum required fire-flow and flow duration for buildings”. The required storage for fire flow represents 1,500 gpm for a two-hour period of time or 180,000 gallons. Max day demands were assigned to the system consistent with those presented in Appendix B. Additionally, a fire flow of 1,500 gpm was iteratively applied to individual proposed hydrant locations in order to determine the worst case condition. Under all scenarios, all points in the system exceeded the required 20 psi residual pressure. The max day plus the fire flow scenario that produced the lowest residual pressure in the system occurred when the fire flow of 1,500 gpm was applied to J-225 resulting in a residual pressure of 63.4 psi at J-225. The maximum velocity in this scenario of 9.62 fps occurred in pipe P-148. The maximum allowable velocity within a pipe as designated by the CSU standards is 20 fps. Flow test results demonstrate that the proposed system is capable of providing the required flows under modeled conditions. Refer to Appendix B for both the flow test and pressure test results.

#### *Potential SIA Items and Permitting*

There are no off-site improvements necessary to complete this project.

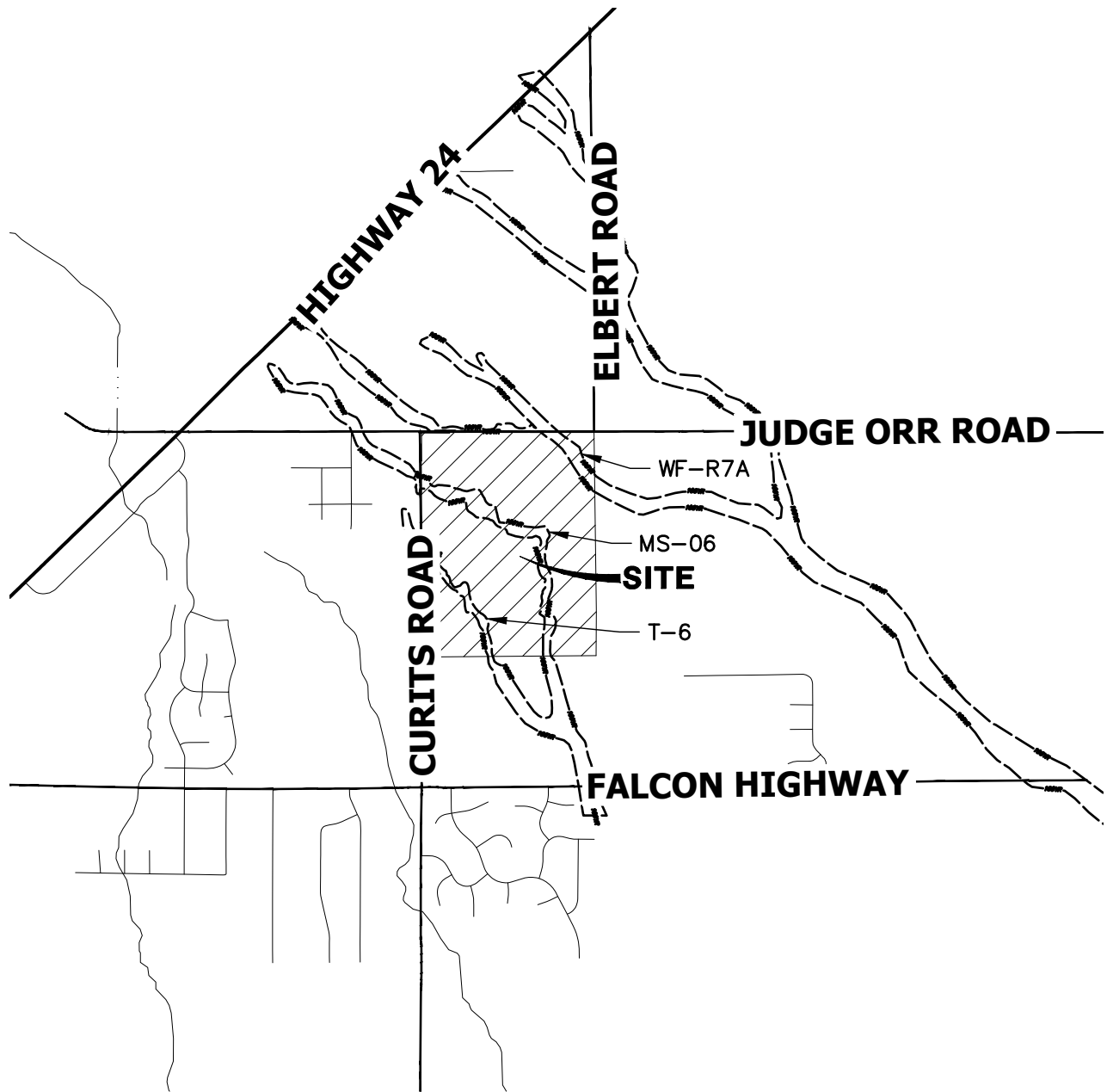
### **CONCLUSION**

The proposed water system that will service Saddlehorn Ranch site has been demonstrated to be in compliance with the standards set forth by Colorado Springs Utilities. The Utilities Department and the Saddlehorn Metro District is not responsible or liable for assumptions made by the Developer regarding utility information associated with the proposed development.

## REFERENCES

1. Water Line Extension and Service Standards. Colorado Springs Utilities. 2018.
2. Hydraulic Analysis Report Modeling Criteria. Colorado Springs Utilities. 2012.

**APPENDIX A**  
**VICINITY MAP**



5000 2500 0 5000 10000



ORIGINAL SCALE: 1" = 5000'



VICINITY MAP  
SADDLEHORN RANCH  
25142.00  
01/17/19  
SHEET 1 OF 1



**J&R ENGINEERING**

A Westrian Company

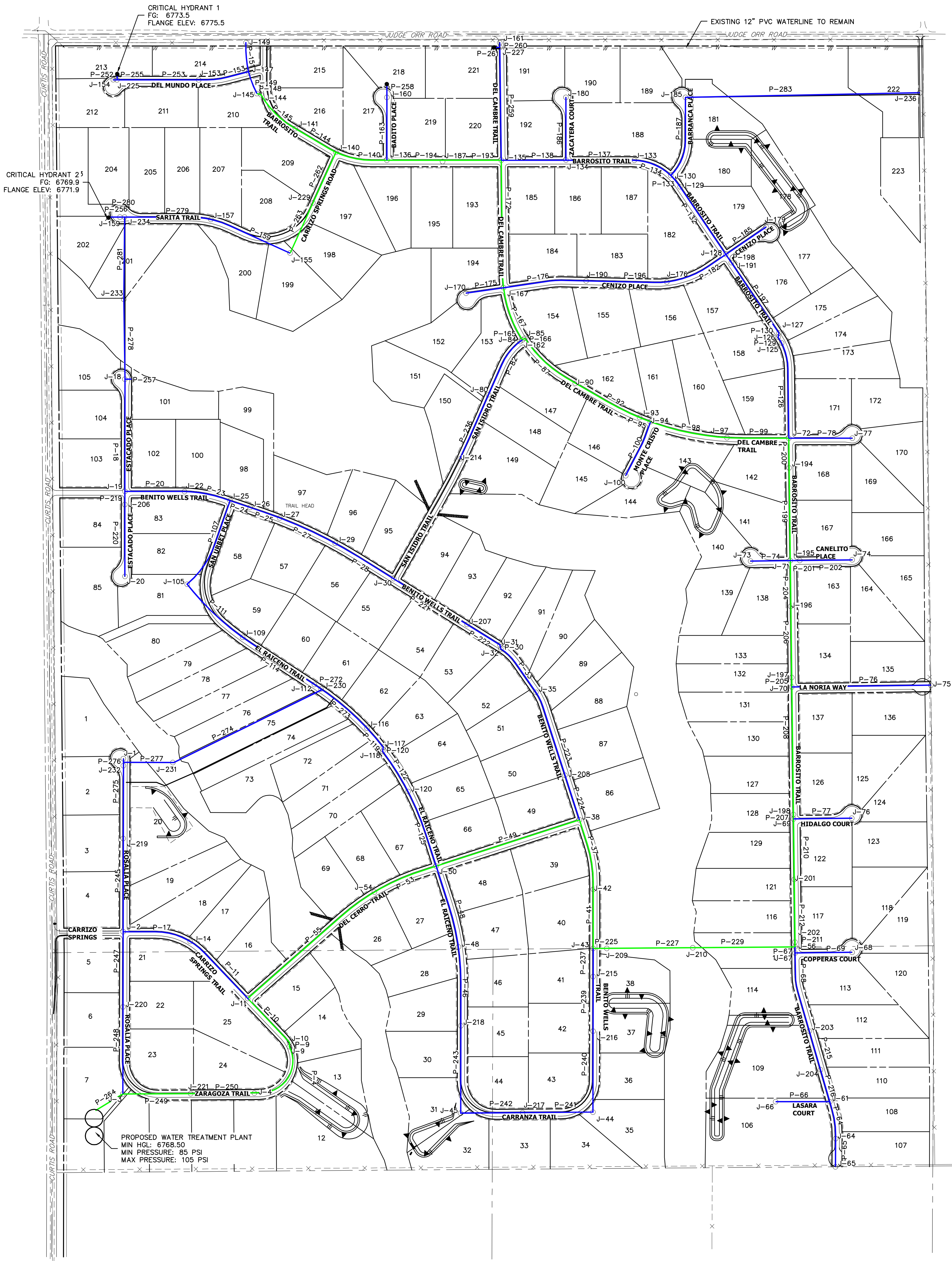
Centennial 303-740-9393 • Colorado Springs 719-593-2593  
Fort Collins 970-491-9888 • [www.jrengineering.com](http://www.jrengineering.com)

**APPENDIX B**  
**WATER SYSTEM DATA**



# SADDLEHORN RANCH

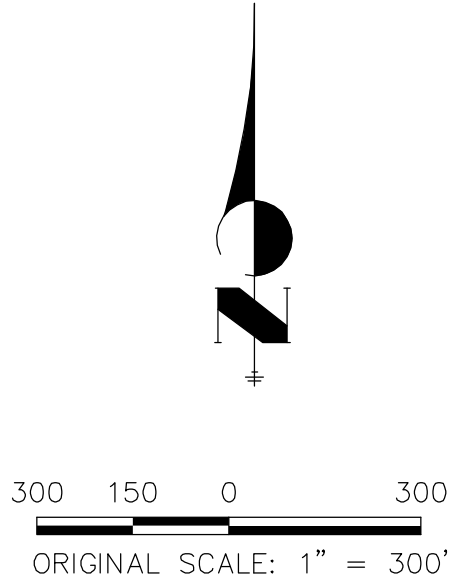
## WATER SYSTEM MAP



Max Day (85 PSI)	Ultimate Buildout
Minimum System Pressure (PSI)	81.6
Maximum System Pressure (PSI)	129.9
Maximum System Velocity (FT/S)	0.7
Maximum System Headloss (FT)	0.110
Max Day + Fire Flow (85 PSI)	
Minimum System Pressure (PSI)	43.5
Number of Junctions Less than 20 psi	0
Maximum System Pressure (PSI)	119.6
Maximum System Velocity (FT/S)	9.62
Maximum System Headloss (FT)	22.1

### LEGEND

- P-1 12-IN PVC WATERLINE
- P-1 8-IN PVC WATERLINE
- J-1 WATERCAD JUNCTION
- WATERCAD HYDRANT
- PROPERTY LINE
- RIGHT-OF-WAY LINE

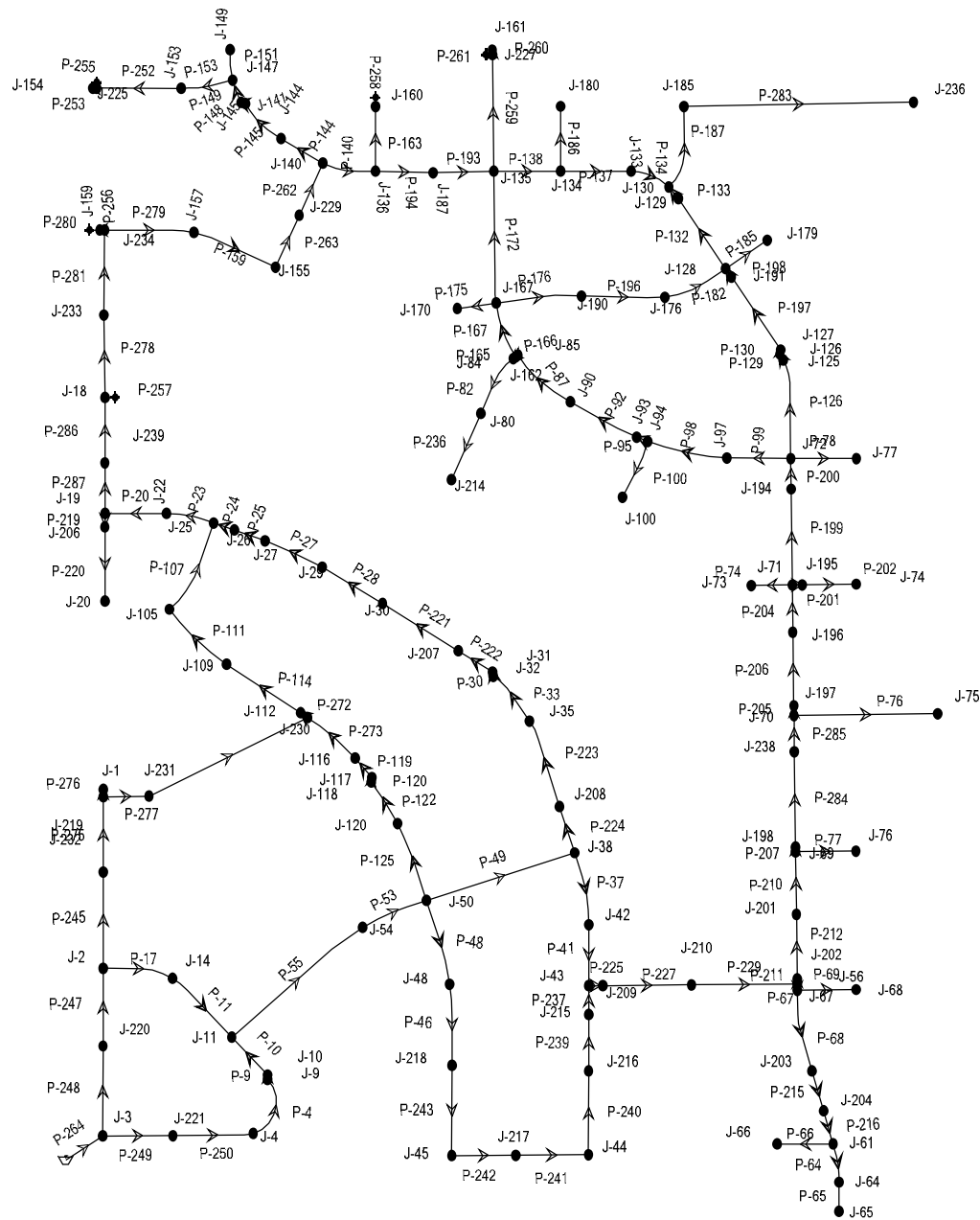


WATER SYSTEM MAP  
SADDLEHORN RANCH  
JOB NO. 25142.00  
09/18/2019  
SHEET 1 OF 1



Centennial 303-740-9393 • Colorado Springs 719-593-2593  
Fort Collins 970-491-9888 • www.jrengineering.com

105 PSI



# AVERAGE DAY

## 85 PSI

Label	Elevation (ft)	Zone	Demand (gpm)	Hydraulic Grade (ft)	Pressure (psi)
J-65	6,663.3	<None>	0.00	6,963.9	130.1
J-64	6,665.9	<None>	0.83	6,963.9	128.9
J-61	6,670.4	<None>	0.00	6,963.9	127.0
J-66	6,671.2	<None>	0.83	6,963.9	126.6
J-204	6,673.1	<None>	0.83	6,963.9	125.8
J-203	6,677.4	<None>	1.24	6,963.9	124.0
J-210	6,684.8	<None>	0.00	6,963.9	120.8
J-209	6,685.2	<None>	0.00	6,963.9	120.6
J-215	6,687.2	<None>	0.83	6,963.9	119.7
J-56	6,688.6	<None>	0.00	6,963.9	119.1
J-202	6,688.6	<None>	0.83	6,963.9	119.1
J-67	6,690.0	<None>	0.00	6,963.9	118.5
J-216	6,692.4	<None>	0.83	6,963.9	117.5
J-45	6,694.6	<None>	1.24	6,963.9	116.5
J-43	6,695.9	<None>	0.00	6,963.9	116.0
J-44	6,696.3	<None>	1.65	6,963.9	115.8
J-42	6,697.7	<None>	0.83	6,963.9	115.2
J-217	6,698.9	<None>	0.41	6,963.9	114.7
J-218	6,700.9	<None>	1.65	6,963.9	113.8
J-201	6,701.3	<None>	1.24	6,963.9	113.6
J-38	6,702.3	<None>	0.00	6,963.9	113.2
J-68	6,702.3	<None>	1.24	6,963.9	113.2
J-208	6,706.0	<None>	1.65	6,963.9	111.6
J-48	6,706.3	<None>	0.83	6,963.9	111.5
J-69	6,710.4	<None>	0.00	6,963.9	109.7
J-50	6,710.8	<None>	1.65	6,963.9	109.5
J-198	6,711.6	<None>	1.24	6,963.9	109.2
J-35	6,713.0	<None>	2.48	6,963.9	108.6
J-4	6,713.7	<None>	0.83	6,964.0	108.3
J-54	6,715.4	<None>	1.24	6,963.9	107.5
J-31	6,717.3	<None>	0.00	6,963.9	106.7
J-32	6,717.3	<None>	0.00	6,963.9	106.7
J-100	6,717.5	<None>	0.83	6,963.9	106.6
J-238	6,717.8	<None>	1.24	6,963.9	106.5
J-179	6,717.9	<None>	0.83	6,963.9	106.4



# AVERAGE DAY

## 85 PSI

Label	Elevation (ft)	Zone	Demand (gpm)	Hydraulic Grade (ft)	Pressure (psi)
J-236	6,719.1	<None>	0.83	6,963.9	105.9
J-120	6,719.2	<None>	1.24	6,963.9	105.9
J-207	6,719.3	<None>	1.65	6,963.9	105.8
J-73	6,719.6	<None>	1.24	6,963.9	105.7
J-191	6,719.9	<None>	0.83	6,963.9	105.6
J-9	6,721.6	<None>	0.00	6,964.0	104.9
J-10	6,721.6	<None>	0.83	6,964.0	104.9
J-128	6,721.8	<None>	0.00	6,963.9	104.7
J-97	6,722.5	<None>	0.83	6,963.9	104.5
J-70	6,722.7	<None>	0.00	6,963.9	104.4
J-94	6,723.0	<None>	0.00	6,963.9	104.2
J-197	6,723.1	<None>	1.24	6,963.9	104.2
J-129	6,723.2	<None>	0.83	6,963.9	104.1
J-77	6,723.7	<None>	1.24	6,963.9	103.9
J-93	6,723.7	<None>	0.83	6,963.9	103.9
J-185	6,724.0	<None>	0.83	6,963.9	103.8
J-176	6,724.4	<None>	0.41	6,963.9	103.6
J-126	6,726.0	<None>	0.00	6,963.9	102.9
J-127	6,726.0	<None>	0.00	6,963.9	102.9
J-30	6,726.1	<None>	1.24	6,963.9	102.9
J-72	6,726.3	<None>	0.83	6,963.9	102.8
J-196	6,726.3	<None>	0.83	6,963.9	102.8
J-116	6,726.8	<None>	2.48	6,963.9	102.6
J-190	6,726.9	<None>	0.83	6,963.9	102.5
J-117	6,727.0	<None>	0.00	6,963.9	102.5
J-118	6,727.0	<None>	0.00	6,963.9	102.5
J-11	6,727.2	<None>	0.83	6,964.0	102.4
J-76	6,727.2	<None>	1.24	6,963.9	102.4
J-125	6,727.2	<None>	1.65	6,963.9	102.4
J-130	6,727.6	<None>	0.41	6,963.9	102.2
J-90	6,727.7	<None>	0.83	6,963.9	102.2
J-195	6,728.5	<None>	0.83	6,963.9	101.9
J-214	6,729.7	<None>	0.41	6,963.9	101.3
J-71	6,730.2	<None>	0.00	6,963.9	101.1
J-133	6,730.4	<None>	0.41	6,963.9	101.0

# AVERAGE DAY

## 85 PSI

Label	Elevation (ft)	Zone	Demand (gpm)	Hydraulic Grade (ft)	Pressure (psi)
J-29	6,731.1	<None>	0.83	6,963.9	100.7
J-167	6,731.9	<None>	1.24	6,963.9	100.4
J-84	6,732.2	<None>	0.00	6,963.9	100.2
J-85	6,732.2	<None>	0.00	6,963.9	100.2
J-162	6,732.2	<None>	0.00	6,963.9	100.2
J-112	6,732.3	<None>	2.07	6,963.9	100.2
J-134	6,733.2	<None>	0.83	6,963.9	99.8
J-230	6,733.4	<None>	0.00	6,963.9	99.7
J-80	6,733.7	<None>	1.24	6,963.9	99.6
J-27	6,734.7	<None>	0.83	6,963.9	99.2
J-194	6,735.7	<None>	0.83	6,963.9	98.7
J-180	6,736.4	<None>	0.41	6,963.9	98.4
J-221	6,736.5	<None>	1.24	6,964.0	98.4
J-14	6,737.8	<None>	1.24	6,964.0	97.9
J-231	6,738.5	<None>	0.00	6,964.0	97.5
J-25	6,739.2	<None>	0.00	6,963.9	97.2
J-26	6,739.4	<None>	1.24	6,963.9	97.1
J-75	6,740.5	<None>	0.83	6,963.9	96.7
J-74	6,740.5	<None>	1.24	6,963.9	96.7
J-170	6,740.9	<None>	0.83	6,963.9	96.5
J-109	6,743.4	<None>	1.65	6,963.9	95.4
J-135	6,743.4	<None>	1.65	6,963.9	95.4
J-161	6,744.4	<None>	0.83	6,963.9	95.0
J-227	6,744.4	<None>	0.00	6,963.9	95.0
J-22	6,744.9	<None>	0.83	6,963.9	94.8
J-187	6,746.2	<None>	0.41	6,963.9	94.2
J-136	6,748.4	<None>	1.24	6,963.9	93.2
J-19	6,749.4	<None>	0.00	6,963.9	92.8
J-105	6,749.6	<None>	0.83	6,963.9	92.7
J-239	6,750.1	<None>	1.24	6,963.9	92.5
J-1	6,750.4	<None>	0.83	6,964.0	92.4
J-232	6,750.5	<None>	0.00	6,964.0	92.4
J-160	6,750.7	<None>	0.41	6,963.9	92.2
J-206	6,751.1	<None>	0.41	6,963.9	92.1
J-219	6,751.8	<None>	0.83	6,964.0	91.8

# AVERAGE DAY

85 PSI

Label	Elevation (ft)	Zone	Demand (gpm)	Hydraulic Grade (ft)	Pressure (psi)
J-20	6,752.0	<None>	0.83	6,963.9	91.7
J-140	6,752.4	<None>	0.00	6,963.9	91.5
J-2	6,755.7	<None>	1.24	6,964.0	90.1
J-229	6,756.0	<None>	0.83	6,963.9	90.0
J-233	6,756.3	<None>	0.00	6,963.9	89.8
J-141	6,756.3	<None>	0.83	6,963.9	89.8
J-155	6,756.6	<None>	1.24	6,963.9	89.7
J-18	6,757.8	<None>	0.83	6,963.9	89.2
J-220	6,761.4	<None>	0.83	6,964.0	87.6
J-144	6,762.2	<None>	0.00	6,963.9	87.3
J-145	6,762.2	<None>	0.00	6,963.9	87.3
J-3	6,762.4	<None>	1.65	6,964.0	87.2
J-147	6,763.6	<None>	0.83	6,963.9	86.7
J-157	6,764.7	<None>	0.83	6,963.9	86.2
J-149	6,767.3	<None>	0.00	6,963.9	85.1
J-234	6,768.9	<None>	0.00	6,963.9	84.4
J-153	6,769.5	<None>	0.83	6,963.9	84.1
J-159	6,770.1	<None>	2.07	6,963.9	83.9
J-154	6,774.9	<None>	0.83	6,963.9	81.8
J-225	6,774.9	<None>	0.00	6,963.9	81.8

# AVERAGE DAY

## 85 PSI

Label	Length (ft)	Diameter (in)	Is Open?	Hazen-Williams C	Flow (Absolute) (gpm)	Velocity (Maximum) (ft/s)	Headloss (ft)
P-55	993	12.0	True	123.0	65.29	0.19	0.02
P-248	522	8.0	True	120.0	26.96	0.17	0.01
P-274	1,028	8.0	True	120.0	16.90	0.11	0.01
P-247	451	8.0	True	120.0	26.14	0.17	0.01
P-264	257	12.0	True	123.0	92.52	0.26	0.01
P-49	903	12.0	True	123.0	45.06	0.13	0.01
P-250	467	12.0	True	123.0	62.67	0.18	0.01
P-245	559	8.0	True	120.0	18.56	0.12	0.01
P-249	407	12.0	True	123.0	63.90	0.18	0.01
P-53	403	12.0	True	123.0	64.05	0.18	0.01
P-4	387	12.0	True	123.0	61.84	0.18	0.01
P-275	437	8.0	True	120.0	17.73	0.11	0.01
P-114	514	8.0	True	120.0	15.97	0.10	0.01
P-10	302	12.0	True	123.0	61.01	0.17	0.00
P-229	614	12.0	True	123.0	37.92	0.11	0.00
P-111	463	8.0	True	120.0	14.32	0.09	0.00
P-107	572	8.0	True	120.0	13.49	0.09	0.00
P-48	504	8.0	True	120.0	12.49	0.08	0.00
P-227	515	12.0	True	123.0	37.92	0.11	0.00
P-277	265	8.0	True	120.0	16.90	0.11	0.00
P-20	358	8.0	True	120.0	14.12	0.09	0.00
P-284	555	12.0	True	123.0	28.42	0.08	0.00
P-278	479	8.0	True	120.0	10.82	0.07	0.00
P-281	493	8.0	True	120.0	10.82	0.07	0.00
P-46	473	8.0	True	120.0	11.66	0.07	0.00
P-37	428	12.0	True	123.0	33.69	0.10	0.00
P-243	524	8.0	True	120.0	10.01	0.06	0.00
P-23	280	8.0	True	120.0	14.95	0.10	0.00
P-212	376	12.0	True	123.0	32.14	0.09	0.00
P-286	379	8.0	True	120.0	11.65	0.07	0.00
P-287	293	8.0	True	120.0	12.88	0.08	0.00
P-223	528	8.0	True	120.0	9.72	0.06	0.00
P-279	519	8.0	True	120.0	8.75	0.06	0.00
P-41	354	12.0	True	123.0	32.87	0.09	0.00
P-241	423	8.0	True	120.0	8.36	0.05	0.00

# AVERAGE DAY

85 PSI

Label	Length (ft)	Diameter (in)	Is Open?	Hazen-Williams C	Flow (Absolute) (gpm)	Velocity (Maximum) (ft/s)	Headloss (ft)
P-224	282	8.0	True	120.0	11.37	0.07	0.00
P-210	362	12.0	True	123.0	30.90	0.09	0.00
P-240	485	8.0	True	120.0	6.71	0.04	0.00
P-242	371	8.0	True	120.0	8.77	0.06	0.00
P-221	519	8.0	True	120.0	5.59	0.04	0.00
P-126	577	8.0	True	120.0	5.64	0.04	0.00
P-204	274	12.0	True	123.0	24.29	0.07	0.00
P-17	413	8.0	True	120.0	6.34	0.04	0.00
P-159	517	8.0	True	120.0	7.92	0.05	0.00
P-199	557	12.0	True	123.0	20.99	0.06	0.00
P-206	427	12.0	True	123.0	25.12	0.07	0.00
P-225	81	12.0	True	123.0	37.92	0.11	0.00
P-33	337	8.0	True	120.0	7.24	0.05	0.00
P-125	479	8.0	True	120.0	4.85	0.03	0.00
P-200	177	12.0	True	123.0	20.16	0.06	0.00
P-28	409	8.0	True	120.0	4.35	0.03	0.00
P-167	335	12.0	True	123.0	7.50	0.02	0.00
P-239	327	8.0	True	120.0	5.88	0.04	0.00
P-99	371	12.0	True	123.0	12.46	0.04	0.00
P-9	26	12.0	True	123.0	61.84	0.18	0.00
P-92	437	12.0	True	123.0	9.98	0.03	0.00
P-205	56	12.0	True	123.0	26.36	0.07	0.00
P-285	210	12.0	True	123.0	27.18	0.08	0.00
P-197	510	8.0	True	120.0	3.99	0.03	0.00
P-263	330	12.0	True	120.0	6.68	0.02	0.00
P-272	49	8.0	True	120.0	18.04	0.12	0.00
P-222	233	8.0	True	120.0	7.24	0.05	0.00
P-11	486	8.0	True	120.0	5.10	0.03	0.00
P-24	127	8.0	True	120.0	1.46	0.01	0.00
P-25	188	8.0	True	120.0	2.69	0.02	0.00
P-27	366	8.0	True	120.0	3.52	0.02	0.00
P-30	25	8.0	True	120.0	7.24	0.05	0.00
P-64	225	8.0	True	120.0	0.83	0.01	0.00
P-65	169	8.0	True	120.0	0.00	0.00	0.00
P-66	324	8.0	True	120.0	0.83	0.01	0.00

# AVERAGE DAY

85 PSI

Label	Length (ft)	Diameter (in)	Is Open?	Hazen-Williams C	Flow (Absolute) (gpm)	Velocity (Maximum) (ft/s)	Headloss (ft)
P-67	37	12.0	True	123.0	4.96	0.01	0.00
P-68	479	12.0	True	123.0	3.72	0.01	0.00
P-69	342	8.0	True	120.0	1.24	0.01	0.00
P-74	238	8.0	True	120.0	1.24	0.01	0.00
P-76	834	8.0	True	120.0	0.83	0.01	0.00
P-77	350	8.0	True	120.0	1.24	0.01	0.00
P-78	381	8.0	True	120.0	1.24	0.01	0.00
P-82	376	8.0	True	120.0	1.65	0.01	0.00
P-87	410	12.0	True	123.0	9.16	0.03	0.00
P-95	69	12.0	True	123.0	10.81	0.03	0.00
P-98	471	12.0	True	123.0	11.63	0.03	0.00
P-100	356	8.0	True	120.0	0.83	0.01	0.00
P-119	150	8.0	True	120.0	3.61	0.02	0.00
P-120	27	8.0	True	120.0	3.61	0.02	0.00
P-122	284	8.0	True	120.0	3.61	0.02	0.00
P-129	41	8.0	True	120.0	3.99	0.03	0.00
P-130	25	8.0	True	120.0	3.99	0.03	0.00
P-132	490	8.0	True	120.0	2.37	0.02	0.00
P-133	88	8.0	True	120.0	1.54	0.01	0.00
P-134	242	8.0	True	120.0	0.52	0.00	0.00
P-137	410	8.0	True	120.0	0.94	0.01	0.00
P-138	388	8.0	True	120.0	2.18	0.01	0.00
P-140	313	12.0	True	123.0	2.55	0.01	0.00
P-144	282	12.0	True	123.0	3.30	0.01	0.00
P-145	293	12.0	True	123.0	2.48	0.01	0.00
P-148	26	8.0	True	120.0	2.48	0.02	0.00
P-149	140	8.0	True	120.0	2.48	0.02	0.00
P-151	177	8.0	True	120.0	0.00	0.00	0.00
P-153	304	8.0	True	120.0	1.65	0.01	0.00
P-163	376	8.0	True	120.0	0.41	0.00	0.00
P-165	17	12.0	True	123.0	1.65	0.00	0.00
P-166	17	12.0	True	123.0	9.16	0.03	0.00
P-172	765	12.0	True	123.0	4.17	0.01	0.00
P-175	228	8.0	True	120.0	0.83	0.01	0.00
P-176	499	8.0	True	120.0	1.27	0.01	0.00

# AVERAGE DAY

85 PSI

Label	Length (ft)	Diameter (in)	Is Open?	Hazen-Williams C	Flow (Absolute) (gpm)	Velocity (Maximum) (ft/s)	Headloss (ft)
P-182	395	8.0	True	120.0	0.03	0.00	0.00
P-185	292	8.0	True	120.0	0.83	0.01	0.00
P-186	376	8.0	True	120.0	0.41	0.00	0.00
P-187	492	8.0	True	120.0	1.65	0.01	0.00
P-193	352	12.0	True	123.0	0.49	0.00	0.00
P-194	335	12.0	True	123.0	0.90	0.00	0.00
P-196	484	8.0	True	120.0	0.45	0.00	0.00
P-198	59	8.0	True	120.0	3.16	0.02	0.00
P-201	57	8.0	True	120.0	2.07	0.01	0.00
P-202	315	8.0	True	120.0	1.24	0.01	0.00
P-207	27	12.0	True	123.0	29.66	0.08	0.00
P-211	29	12.0	True	123.0	32.96	0.09	0.00
P-215	241	8.0	True	120.0	2.48	0.02	0.00
P-216	200	8.0	True	120.0	1.65	0.01	0.00
P-219	79	8.0	True	120.0	1.24	0.01	0.00
P-220	431	8.0	True	120.0	0.83	0.01	0.00
P-236	420	8.0	True	120.0	0.41	0.00	0.00
P-237	168	8.0	True	120.0	5.05	0.03	0.00
P-252	491	8.0	True	120.0	0.83	0.01	0.00
P-253	22	8.0	True	120.0	0.83	0.01	0.00
P-255	33	6.0	True	130.0	0.00	0.00	0.00
P-256	60	6.0	True	130.0	0.00	0.00	0.00
P-257	60	6.0	True	130.0	0.00	0.00	0.00
P-258	52	6.0	True	130.0	0.00	0.00	0.00
P-259	677	8.0	True	120.0	0.83	0.01	0.00
P-260	28	8.0	True	120.0	0.83	0.01	0.00
P-261	38	6.0	True	130.0	0.00	0.00	0.00
P-262	333	12.0	True	120.0	5.86	0.02	0.00
P-273	363	8.0	True	120.0	1.13	0.01	0.00
P-276	42	8.0	True	120.0	0.83	0.01	0.00
P-280	28	8.0	True	120.0	2.07	0.01	0.00
P-283	1,332	8.0	True	120.0	0.83	0.01	0.00

## MAX DAY

85 PSI

Label	Elevation (ft)	Zone	Demand (gpm)	Hydraulic Grade (ft)	Pressure (psi)
J-65	6,663.3	<None>	0.00	6,963.5	129.9
J-64	6,665.9	<None>	2.19	6,963.5	128.8
J-61	6,670.4	<None>	0.00	6,963.5	126.8
J-66	6,671.2	<None>	2.19	6,963.5	126.5
J-204	6,673.1	<None>	2.19	6,963.5	125.6
J-203	6,677.4	<None>	3.28	6,963.5	123.8
J-210	6,684.8	<None>	0.00	6,963.5	120.6
J-209	6,685.2	<None>	0.00	6,963.6	120.4
J-215	6,687.2	<None>	2.19	6,963.6	119.6
J-56	6,688.6	<None>	0.00	6,963.5	118.9
J-202	6,688.6	<None>	2.19	6,963.5	118.9
J-67	6,690.0	<None>	0.00	6,963.5	118.3
J-216	6,692.4	<None>	2.19	6,963.6	117.3
J-45	6,694.6	<None>	3.28	6,963.6	116.4
J-43	6,695.9	<None>	0.00	6,963.6	115.8
J-44	6,696.3	<None>	4.38	6,963.6	115.6
J-42	6,697.7	<None>	2.19	6,963.6	115.0
J-217	6,698.9	<None>	1.09	6,963.6	114.5
J-218	6,700.9	<None>	4.38	6,963.6	113.7
J-201	6,701.3	<None>	3.28	6,963.5	113.4
J-38	6,702.3	<None>	0.00	6,963.6	113.0
J-68	6,702.3	<None>	3.28	6,963.5	113.0
J-208	6,706.0	<None>	4.38	6,963.6	111.4
J-48	6,706.3	<None>	2.19	6,963.6	111.3
J-69	6,710.4	<None>	0.00	6,963.5	109.5
J-50	6,710.8	<None>	4.38	6,963.6	109.4
J-198	6,711.6	<None>	3.28	6,963.5	109.0
J-35	6,713.0	<None>	6.57	6,963.6	108.4
J-4	6,713.7	<None>	2.19	6,963.9	108.2
J-54	6,715.4	<None>	3.28	6,963.7	107.4
J-32	6,717.3	<None>	0.00	6,963.6	106.5
J-31	6,717.3	<None>	0.00	6,963.6	106.5
J-100	6,717.5	<None>	2.19	6,963.4	106.4
J-238	6,717.8	<None>	3.28	6,963.5	106.3
J-179	6,717.9	<None>	2.19	6,963.4	106.2



# MAX DAY

85 PSI

Label	Elevation (ft)	Zone	Demand (gpm)	Hydraulic Grade (ft)	Pressure (psi)
J-120	6,719.2	<None>	3.28	6,963.6	105.8
J-236	6,719.1	<None>	2.19	6,963.4	105.7
J-207	6,719.3	<None>	4.38	6,963.6	105.7
J-73	6,719.6	<None>	3.28	6,963.5	105.5
J-191	6,719.9	<None>	2.19	6,963.4	105.4
J-9	6,721.6	<None>	0.00	6,963.8	104.8
J-10	6,721.6	<None>	2.19	6,963.8	104.8
J-128	6,721.8	<None>	0.00	6,963.4	104.5
J-97	6,722.5	<None>	2.19	6,963.4	104.3
J-70	6,722.7	<None>	0.00	6,963.5	104.2
J-94	6,723.0	<None>	0.00	6,963.4	104.0
J-197	6,723.1	<None>	3.28	6,963.5	104.0
J-129	6,723.2	<None>	2.19	6,963.4	103.9
J-77	6,723.7	<None>	3.28	6,963.5	103.7
J-93	6,723.7	<None>	2.19	6,963.4	103.7
J-185	6,724.0	<None>	2.19	6,963.4	103.6
J-176	6,724.4	<None>	1.09	6,963.4	103.4
J-30	6,726.1	<None>	3.28	6,963.6	102.7
J-126	6,726.0	<None>	0.00	6,963.4	102.7
J-127	6,726.0	<None>	0.00	6,963.4	102.7
J-72	6,726.3	<None>	2.19	6,963.5	102.6
J-196	6,726.3	<None>	2.19	6,963.5	102.6
J-116	6,726.8	<None>	6.57	6,963.6	102.5
J-117	6,727.0	<None>	0.00	6,963.6	102.4
J-118	6,727.0	<None>	0.00	6,963.6	102.4
J-11	6,727.2	<None>	2.19	6,963.8	102.4
J-190	6,726.9	<None>	2.19	6,963.4	102.3
J-76	6,727.2	<None>	3.28	6,963.5	102.2
J-125	6,727.2	<None>	4.38	6,963.4	102.2
J-130	6,727.6	<None>	1.09	6,963.4	102.0
J-90	6,727.7	<None>	2.19	6,963.4	102.0
J-195	6,728.5	<None>	2.19	6,963.5	101.7
J-214	6,729.7	<None>	1.09	6,963.4	101.1
J-71	6,730.2	<None>	0.00	6,963.5	100.9
J-133	6,730.4	<None>	1.09	6,963.4	100.8

# MAX DAY

85 PSI

Label	Elevation (ft)	Zone	Demand (gpm)	Hydraulic Grade (ft)	Pressure (psi)
J-29	6,731.1	<None>	2.19	6,963.6	100.6
J-167	6,731.9	<None>	3.28	6,963.4	100.2
J-112	6,732.3	<None>	5.47	6,963.6	100.1
J-84	6,732.2	<None>	0.00	6,963.4	100.0
J-85	6,732.2	<None>	0.00	6,963.4	100.0
J-162	6,732.2	<None>	0.00	6,963.4	100.0
J-134	6,733.2	<None>	2.19	6,963.4	99.6
J-230	6,733.4	<None>	0.00	6,963.6	99.6
J-80	6,733.7	<None>	3.28	6,963.4	99.4
J-27	6,734.7	<None>	2.19	6,963.5	99.0
J-194	6,735.7	<None>	2.19	6,963.5	98.5
J-221	6,736.5	<None>	3.28	6,963.9	98.4
J-180	6,736.4	<None>	1.09	6,963.4	98.2
J-14	6,737.8	<None>	3.28	6,963.8	97.8
J-231	6,738.5	<None>	0.00	6,963.7	97.4
J-25	6,739.2	<None>	0.00	6,963.5	97.1
J-26	6,739.4	<None>	3.28	6,963.5	97.0
J-75	6,740.5	<None>	2.19	6,963.5	96.5
J-74	6,740.5	<None>	3.28	6,963.5	96.5
J-170	6,740.9	<None>	2.19	6,963.4	96.3
J-109	6,743.4	<None>	4.38	6,963.6	95.3
J-135	6,743.4	<None>	4.38	6,963.4	95.2
J-161	6,744.4	<None>	2.19	6,963.4	94.8
J-227	6,744.4	<None>	0.00	6,963.4	94.8
J-22	6,744.9	<None>	2.19	6,963.5	94.6
J-187	6,746.2	<None>	1.09	6,963.4	94.0
J-136	6,748.4	<None>	3.28	6,963.4	93.0
J-19	6,749.4	<None>	0.00	6,963.5	92.6
J-105	6,749.6	<None>	2.19	6,963.6	92.6
J-239	6,750.1	<None>	3.28	6,963.5	92.3
J-1	6,750.4	<None>	2.19	6,963.7	92.3
J-232	6,750.5	<None>	0.00	6,963.7	92.2
J-160	6,750.7	<None>	1.09	6,963.4	92.0
J-206	6,751.1	<None>	1.09	6,963.5	91.9
J-219	6,751.8	<None>	2.19	6,963.8	91.7

# MAX DAY

## 85 PSI

Label	Elevation (ft)	Zone	Demand (gpm)	Hydraulic Grade (ft)	Pressure (psi)
J-20	6,752.0	<None>	2.19	6,963.5	91.5
J-140	6,752.4	<None>	0.00	6,963.4	91.3
J-2	6,755.7	<None>	3.28	6,963.8	90.0
J-229	6,756.0	<None>	2.19	6,963.4	89.8
J-233	6,756.3	<None>	0.00	6,963.5	89.6
J-141	6,756.3	<None>	2.19	6,963.4	89.6
J-155	6,756.6	<None>	3.28	6,963.4	89.5
J-18	6,757.8	<None>	2.19	6,963.5	89.0
J-220	6,761.4	<None>	2.19	6,963.9	87.6
J-3	6,762.4	<None>	4.38	6,963.9	87.2
J-144	6,762.2	<None>	0.00	6,963.4	87.1
J-145	6,762.2	<None>	0.00	6,963.4	87.1
J-147	6,763.6	<None>	2.19	6,963.4	86.5
J-157	6,764.7	<None>	2.19	6,963.5	86.0
J-149	6,767.3	<None>	0.00	6,963.4	84.9
J-234	6,768.9	<None>	0.00	6,963.5	84.2
J-153	6,769.5	<None>	2.19	6,963.4	83.9
J-159	6,770.1	<None>	5.47	6,963.5	83.7
J-154	6,774.9	<None>	2.19	6,963.4	81.6
J-225	6,774.9	<None>	0.00	6,963.4	81.6

# MAX DAY

## 85 PSI

Label	Length (ft)	Diameter (in)	Is Open?	Hazen-Williams C	Flow (Absolute) (gpm)	Velocity (Maximum) (ft/s)	Headloss (ft)
P-55	993	12.0	True	123.0	173.01	0.49	0.11
P-248	522	8.0	True	120.0	71.44	0.46	0.08
P-274	1,028	8.0	True	120.0	44.79	0.29	0.07
P-247	451	8.0	True	120.0	69.26	0.44	0.07
P-264	257	12.0	True	123.0	245.16	0.70	0.05
P-49	903	12.0	True	123.0	119.40	0.34	0.05
P-250	467	12.0	True	123.0	166.06	0.47	0.05
P-245	559	8.0	True	120.0	49.17	0.31	0.04
P-249	407	12.0	True	123.0	169.34	0.48	0.04
P-53	403	12.0	True	123.0	169.73	0.48	0.04
P-4	387	12.0	True	123.0	163.87	0.46	0.04
P-275	437	8.0	True	120.0	46.98	0.30	0.03
P-114	514	8.0	True	120.0	42.32	0.27	0.03
P-10	302	12.0	True	123.0	161.68	0.46	0.03
P-107	572	8.0	True	120.0	35.76	0.23	0.03
P-229	614	12.0	True	123.0	100.48	0.29	0.02
P-111	463	8.0	True	120.0	37.94	0.24	0.02
P-227	515	12.0	True	123.0	100.48	0.29	0.02
P-48	504	8.0	True	120.0	33.09	0.21	0.02
P-277	265	8.0	True	120.0	44.79	0.29	0.02
P-20	358	8.0	True	120.0	37.42	0.24	0.02
P-46	473	8.0	True	120.0	30.90	0.20	0.02
P-23	280	8.0	True	120.0	39.61	0.25	0.02
P-281	493	8.0	True	120.0	28.66	0.18	0.01
P-278	479	8.0	True	120.0	28.66	0.18	0.01
P-37	428	12.0	True	123.0	89.28	0.25	0.01
P-243	524	8.0	True	120.0	26.52	0.17	0.01
P-223	528	8.0	True	120.0	25.75	0.16	0.01
P-286	379	8.0	True	120.0	30.86	0.20	0.01
P-284	555	12.0	True	123.0	75.31	0.21	0.01
P-287	293	8.0	True	120.0	34.14	0.22	0.01
P-279	519	8.0	True	120.0	23.19	0.15	0.01
P-41	354	12.0	True	123.0	87.09	0.25	0.01
P-212	376	12.0	True	123.0	85.16	0.24	0.01
P-210	362	12.0	True	123.0	81.88	0.23	0.01

# MAX DAY

## 85 PSI

Label	Length (ft)	Diameter (in)	Is Open?	Hazen-Williams C	Flow (Absolute) (gpm)	Velocity (Maximum) (ft/s)	Headloss (ft)
P-224	282	8.0	True	120.0	30.12	0.19	0.01
P-159	517	8.0	True	120.0	21.00	0.13	0.01
P-206	427	12.0	True	123.0	66.56	0.19	0.01
P-241	423	8.0	True	120.0	22.15	0.14	0.01
P-242	371	8.0	True	120.0	23.24	0.15	0.01
P-199	557	12.0	True	123.0	55.61	0.16	0.01
P-240	485	8.0	True	120.0	17.77	0.11	0.01
P-285	210	12.0	True	123.0	72.03	0.20	0.00
P-204	274	12.0	True	123.0	64.37	0.18	0.00
P-126	577	8.0	True	120.0	14.94	0.10	0.00
P-17	413	8.0	True	120.0	16.80	0.11	0.00
P-33	337	8.0	True	120.0	19.18	0.12	0.00
P-221	519	8.0	True	120.0	14.80	0.09	0.00
P-225	81	12.0	True	123.0	100.48	0.29	0.00
P-11	486	8.0	True	120.0	13.52	0.09	0.00
P-222	233	8.0	True	120.0	19.18	0.12	0.00
P-125	479	8.0	True	120.0	12.85	0.08	0.00
P-239	327	8.0	True	120.0	15.58	0.10	0.00
P-272	49	8.0	True	120.0	47.79	0.31	0.00
P-9	26	12.0	True	123.0	163.87	0.46	0.00
P-197	510	8.0	True	120.0	10.56	0.07	0.00
P-200	177	12.0	True	123.0	53.42	0.15	0.00
P-98	471	12.0	True	123.0	30.82	0.09	0.00
P-28	409	8.0	True	120.0	11.52	0.07	0.00
P-99	371	12.0	True	123.0	33.01	0.09	0.00
P-87	410	12.0	True	123.0	24.26	0.07	0.00
P-92	437	12.0	True	123.0	26.45	0.08	0.00
P-27	366	8.0	True	120.0	9.33	0.06	0.00
P-211	29	12.0	True	123.0	87.35	0.25	0.00
P-138	388	8.0	True	120.0	5.77	0.04	0.00
P-122	284	8.0	True	120.0	9.57	0.06	0.00
P-132	490	8.0	True	120.0	6.27	0.04	0.00
P-205	56	12.0	True	123.0	69.84	0.20	0.00
P-119	150	8.0	True	120.0	9.57	0.06	0.00
P-207	27	12.0	True	123.0	78.59	0.22	0.00

# MAX DAY

## 85 PSI

Label	Length (ft)	Diameter (in)	Is Open?	Hazen-Williams C	Flow (Absolute) (gpm)	Velocity (Maximum) (ft/s)	Headloss (ft)
P-237	168	8.0	True	120.0	13.39	0.09	0.00
P-172	765	12.0	True	123.0	11.03	0.03	0.00
P-187	492	8.0	True	120.0	4.38	0.03	0.00
P-176	499	8.0	True	120.0	3.37	0.02	0.00
P-153	304	8.0	True	120.0	4.38	0.03	0.00
P-129	41	8.0	True	120.0	10.56	0.07	0.00
P-167	335	12.0	True	123.0	19.88	0.06	0.00
P-220	431	8.0	True	120.0	2.19	0.01	0.00
P-259	677	8.0	True	120.0	2.19	0.01	0.00
P-30	25	8.0	True	120.0	19.18	0.12	0.00
P-215	241	8.0	True	120.0	6.57	0.04	0.00
P-82	376	8.0	True	120.0	4.38	0.03	0.00
P-216	200	8.0	True	120.0	4.38	0.03	0.00
P-77	350	8.0	True	120.0	3.28	0.02	0.00
P-202	315	8.0	True	120.0	3.28	0.02	0.00
P-280	28	8.0	True	120.0	5.47	0.03	0.00
P-145	293	12.0	True	123.0	6.57	0.02	0.00
P-262	333	12.0	True	120.0	15.53	0.04	0.00
P-263	330	12.0	True	120.0	17.72	0.05	0.00
P-25	188	8.0	True	120.0	7.14	0.05	0.00
P-24	127	8.0	True	120.0	3.86	0.02	0.00
P-64	225	8.0	True	120.0	2.19	0.01	0.00
P-65	169	8.0	True	120.0	0.00	0.00	0.00
P-66	324	8.0	True	120.0	2.19	0.01	0.00
P-67	37	12.0	True	123.0	13.13	0.04	0.00
P-68	479	12.0	True	123.0	9.85	0.03	0.00
P-69	342	8.0	True	120.0	3.28	0.02	0.00
P-74	238	8.0	True	120.0	3.28	0.02	0.00
P-76	834	8.0	True	120.0	2.19	0.01	0.00
P-78	381	8.0	True	120.0	3.28	0.02	0.00
P-95	69	12.0	True	123.0	28.63	0.08	0.00
P-100	356	8.0	True	120.0	2.19	0.01	0.00
P-120	27	8.0	True	120.0	9.57	0.06	0.00
P-130	25	8.0	True	120.0	10.56	0.07	0.00
P-133	88	8.0	True	120.0	4.08	0.03	0.00

# MAX DAY

## 85 PSI

Label	Length (ft)	Diameter (in)	Is Open?	Hazen-Williams C	Flow (Absolute) (gpm)	Velocity (Maximum) (ft/s)	Headloss (ft)
P-134	242	8.0	True	120.0	1.39	0.01	0.00
P-137	410	8.0	True	120.0	2.49	0.02	0.00
P-140	313	12.0	True	123.0	6.77	0.02	0.00
P-144	282	12.0	True	123.0	8.76	0.02	0.00
P-148	26	8.0	True	120.0	6.57	0.04	0.00
P-149	140	8.0	True	120.0	6.57	0.04	0.00
P-151	177	8.0	True	120.0	0.00	0.00	0.00
P-163	376	8.0	True	120.0	1.09	0.01	0.00
P-165	17	12.0	True	123.0	4.38	0.01	0.00
P-166	17	12.0	True	123.0	24.26	0.07	0.00
P-175	228	8.0	True	120.0	2.19	0.01	0.00
P-182	395	8.0	True	120.0	0.09	0.00	0.00
P-185	292	8.0	True	120.0	2.19	0.01	0.00
P-186	376	8.0	True	120.0	1.09	0.01	0.00
P-193	352	12.0	True	123.0	1.30	0.00	0.00
P-194	335	12.0	True	123.0	2.40	0.01	0.00
P-196	484	8.0	True	120.0	1.18	0.01	0.00
P-198	59	8.0	True	120.0	8.37	0.05	0.00
P-201	57	8.0	True	120.0	5.47	0.03	0.00
P-219	79	8.0	True	120.0	3.28	0.02	0.00
P-236	420	8.0	True	120.0	1.09	0.01	0.00
P-252	491	8.0	True	120.0	2.19	0.01	0.00
P-253	22	8.0	True	120.0	2.19	0.01	0.00
P-255	33	6.0	True	130.0	0.00	0.00	0.00
P-256	60	6.0	True	130.0	0.00	0.00	0.00
P-257	60	6.0	True	130.0	0.00	0.00	0.00
P-258	52	6.0	True	130.0	0.00	0.00	0.00
P-260	28	8.0	True	120.0	2.19	0.01	0.00
P-261	38	6.0	True	130.0	0.00	0.00	0.00
P-273	363	8.0	True	120.0	3.00	0.02	0.00
P-276	42	8.0	True	120.0	2.19	0.01	0.00
P-283	1,332	8.0	True	120.0	2.19	0.01	0.00

Label	Elevation (ft)	Zone	Demand (gpm)	Hydraulic Grade (ft)	Pressure (psi)
J-65	6,663.3	<None>	0.00	6,939.8	119.6
J-64	6,665.9	<None>	2.19	6,939.8	118.5
J-61	6,670.4	<None>	0.00	6,939.8	116.5
J-66	6,671.2	<None>	2.19	6,939.8	116.2
J-204	6,673.1	<None>	2.19	6,939.8	115.4
J-203	6,677.4	<None>	3.28	6,939.8	113.5
J-209	6,685.2	<None>	0.00	6,943.6	111.8
J-210	6,684.8	<None>	0.00	6,941.9	111.2
J-215	6,687.2	<None>	2.19	6,944.1	111.2
J-216	6,692.4	<None>	2.19	6,944.6	109.1
J-45	6,694.6	<None>	3.28	6,946.4	108.9
J-56	6,688.6	<None>	0.00	6,939.8	108.7
J-202	6,688.6	<None>	2.19	6,939.7	108.6
J-67	6,690.0	<None>	0.00	6,939.8	108.1
J-44	6,696.3	<None>	4.38	6,945.2	107.7
J-43	6,695.9	<None>	0.00	6,943.9	107.3
J-42	6,697.7	<None>	2.19	6,944.7	106.9
J-217	6,698.9	<None>	1.09	6,945.8	106.8
J-218	6,700.9	<None>	4.38	6,947.1	106.5
J-4	6,713.7	<None>	2.19	6,958.4	105.9
J-38	6,702.3	<None>	0.00	6,945.7	105.3
J-48	6,706.3	<None>	2.19	6,947.8	104.5
J-208	6,706.0	<None>	4.38	6,945.4	103.6
J-50	6,710.8	<None>	4.38	6,948.6	102.9
J-68	6,702.3	<None>	3.28	6,939.8	102.7
J-201	6,701.3	<None>	3.28	6,938.4	102.6
J-9	6,721.6	<None>	0.00	6,956.8	101.8
J-54	6,715.4	<None>	3.28	6,950.6	101.8
J-10	6,721.6	<None>	2.19	6,956.7	101.7
J-35	6,713.0	<None>	6.57	6,945.0	100.4
J-120	6,719.2	<None>	3.28	6,948.6	99.2
J-11	6,727.2	<None>	2.19	6,955.5	98.8
J-32	6,717.3	<None>	0.00	6,944.7	98.4
J-31	6,717.3	<None>	0.00	6,944.7	98.4
J-69	6,710.4	<None>	0.00	6,937.2	98.1
J-198	6,711.6	<None>	3.28	6,937.1	97.6



Label	Elevation (ft)	Zone	Demand (gpm)	Hydraulic Grade (ft)	Pressure (psi)
J-207	6,719.3	<None>	4.38	6,944.5	97.4
J-221	6,736.5	<None>	3.28	6,960.3	96.8
J-116	6,726.8	<None>	6.57	6,948.6	96.0
J-118	6,727.0	<None>	0.00	6,948.6	95.9
J-117	6,727.0	<None>	0.00	6,948.6	95.9
J-14	6,737.8	<None>	3.28	6,955.8	94.3
J-30	6,726.1	<None>	3.28	6,944.0	94.3
J-238	6,717.8	<None>	3.28	6,935.3	94.1
J-112	6,732.3	<None>	5.47	6,948.4	93.5
J-230	6,733.4	<None>	0.00	6,948.6	93.1
J-231	6,738.5	<None>	0.00	6,951.9	92.3
J-29	6,731.1	<None>	2.19	6,943.7	92.0
J-73	6,719.6	<None>	3.28	6,932.1	92.0
J-70	6,722.7	<None>	0.00	6,934.6	91.7
J-197	6,723.1	<None>	3.28	6,934.4	91.4
J-100	6,717.5	<None>	2.19	6,928.4	91.3
J-76	6,727.2	<None>	3.28	6,937.2	90.9
J-179	6,717.9	<None>	2.19	6,926.8	90.4
J-27	6,734.7	<None>	2.19	6,943.5	90.3
J-236	6,719.1	<None>	2.19	6,926.1	89.6
J-191	6,719.9	<None>	2.19	6,926.9	89.6
J-97	6,722.5	<None>	2.19	6,929.2	89.4
J-196	6,726.3	<None>	2.19	6,933.0	89.4
J-77	6,723.7	<None>	3.28	6,929.8	89.2
J-94	6,723.0	<None>	0.00	6,928.4	88.9
J-128	6,721.8	<None>	0.00	6,926.8	88.7
J-93	6,723.7	<None>	2.19	6,928.3	88.5
J-25	6,739.2	<None>	0.00	6,943.2	88.3
J-26	6,739.4	<None>	3.28	6,943.3	88.2
J-195	6,728.5	<None>	2.19	6,932.1	88.1
J-72	6,726.3	<None>	2.19	6,929.8	88.1
J-109	6,743.4	<None>	4.38	6,946.7	87.9
J-129	6,723.2	<None>	2.19	6,926.2	87.8
J-219	6,751.8	<None>	2.19	6,954.2	87.6
J-1	6,750.4	<None>	2.19	6,952.7	87.5
J-176	6,724.4	<None>	1.09	6,926.7	87.5

Label	Elevation (ft)	Zone	Demand (gpm)	Hydraulic Grade (ft)	Pressure (psi)
J-126	6,726.0	<None>	0.00	6,928.3	87.5
J-232	6,750.5	<None>	0.00	6,952.7	87.5
J-127	6,726.0	<None>	0.00	6,928.2	87.5
J-185	6,724.0	<None>	2.19	6,926.1	87.4
J-71	6,730.2	<None>	0.00	6,932.1	87.4
J-125	6,727.2	<None>	4.38	6,928.4	87.0
J-2	6,755.7	<None>	3.28	6,956.0	86.7
J-90	6,727.7	<None>	2.19	6,927.6	86.5
J-190	6,726.9	<None>	2.19	6,926.6	86.4
J-3	6,762.4	<None>	4.38	6,962.0	86.4
J-130	6,727.6	<None>	1.09	6,926.1	85.9
J-220	6,761.4	<None>	2.19	6,958.8	85.4
J-214	6,729.7	<None>	1.09	6,927.0	85.3
J-22	6,744.9	<None>	2.19	6,941.4	85.0
J-105	6,749.6	<None>	2.19	6,945.1	84.6
J-133	6,730.4	<None>	1.09	6,925.8	84.6
J-85	6,732.2	<None>	0.00	6,927.0	84.3
J-84	6,732.2	<None>	0.00	6,927.0	84.3
J-162	6,732.2	<None>	0.00	6,927.0	84.3
J-194	6,735.7	<None>	2.19	6,930.4	84.2
J-167	6,731.9	<None>	3.28	6,926.4	84.2
J-75	6,740.5	<None>	2.19	6,934.6	84.0
J-80	6,733.7	<None>	3.28	6,927.0	83.6
J-134	6,733.2	<None>	2.19	6,925.4	83.1
J-74	6,740.5	<None>	3.28	6,932.1	82.9
J-19	6,749.4	<None>	0.00	6,939.1	82.1
J-180	6,736.4	<None>	1.09	6,925.4	81.8
J-206	6,751.1	<None>	1.09	6,939.1	81.4
J-239	6,750.1	<None>	3.28	6,937.3	81.0
J-20	6,752.0	<None>	2.19	6,939.1	81.0
J-170	6,740.9	<None>	2.19	6,926.4	80.3
J-135	6,743.4	<None>	4.38	6,924.9	78.5
J-161	6,744.4	<None>	2.19	6,924.9	78.1
J-227	6,744.4	<None>	0.00	6,924.9	78.1
J-187	6,746.2	<None>	1.09	6,923.9	76.9
J-18	6,757.8	<None>	2.19	6,934.9	76.6

Label	Elevation (ft)	Zone	Demand (gpm)	Hydraulic Grade (ft)	Pressure (psi)
J-233	6,756.3	<None>	0.00	6,931.9	76.0
J-136	6,748.4	<None>	3.28	6,923.0	75.5
J-160	6,750.7	<None>	1.09	6,923.0	74.5
J-140	6,752.4	<None>	0.00	6,922.1	73.4
J-229	6,756.0	<None>	2.19	6,922.4	72.0
J-155	6,756.6	<None>	3.28	6,922.6	71.8
J-141	6,756.3	<None>	2.19	6,920.4	71.0
J-157	6,764.7	<None>	2.19	6,925.7	69.7
J-234	6,768.9	<None>	0.00	6,928.9	69.2
J-159	6,770.1	<None>	5.47	6,928.9	68.7
J-144	6,762.2	<None>	0.00	6,918.6	67.7
J-145	6,762.2	<None>	0.00	6,917.5	67.2
J-147	6,763.6	<None>	2.19	6,911.1	63.8
J-149	6,767.3	<None>	0.00	6,911.1	62.2
J-153	6,769.5	<None>	2.19	6,897.4	55.4
J-154	6,774.9	<None>	2.19	6,875.3	43.5
J-225	6,774.9	<None>	0.00	6,875.3	43.5

Label	Length (ft)	Diameter (in)	Is Open?	Hazen-Williams C	Flow (Absolute) (gpm)	Velocity (Maximum) (ft/s)	Headloss (ft)
P-255	33	6.0	True	130.0	1,500.00	17.02	23.70
P-252	491	8.0	True	120.0	1,502.19	9.59	22.10
P-153	304	8.0	True	120.0	1,504.38	9.60	13.70
P-149	140	8.0	True	120.0	1,506.57	9.62	6.33
P-55	993	12.0	True	123.0	1,356.45	3.85	4.90
P-274	1,028	8.0	True	120.0	361.36	2.31	3.31
P-248	522	8.0	True	120.0	513.58	3.28	3.22
P-279	519	8.0	True	120.0	509.36	3.25	3.15
P-159	517	8.0	True	120.0	507.18	3.24	3.12
P-281	493	8.0	True	120.0	514.84	3.29	3.05
P-278	479	8.0	True	120.0	514.84	3.29	2.97
P-49	903	12.0	True	123.0	1,079.12	3.06	2.92
P-247	451	8.0	True	120.0	511.39	3.26	2.76
P-286	379	8.0	True	120.0	517.03	3.30	2.37
P-20	358	8.0	True	120.0	523.60	3.34	2.29
P-229	614	12.0	True	123.0	1,114.31	3.16	2.11
P-264	257	12.0	True	123.0	1,745.17	4.95	2.02
P-53	403	12.0	True	123.0	1,353.17	3.84	1.98
P-250	467	12.0	True	123.0	1,223.93	3.47	1.91
P-107	572	8.0	True	120.0	366.53	2.34	1.89
P-287	293	8.0	True	120.0	520.31	3.32	1.85
P-245	559	8.0	True	120.0	365.73	2.33	1.84
P-284	555	12.0	True	123.0	1,089.14	3.09	1.82
P-23	280	8.0	True	120.0	525.79	3.36	1.80
P-199	557	12.0	True	123.0	1,069.44	3.03	1.77
P-227	515	12.0	True	123.0	1,114.31	3.16	1.77
P-114	514	8.0	True	120.0	373.10	2.38	1.76
P-145	293	12.0	True	123.0	1,506.57	4.27	1.75
P-144	282	12.0	True	123.0	1,508.76	4.28	1.70
P-249	407	12.0	True	123.0	1,227.21	3.48	1.67
P-4	387	12.0	True	123.0	1,221.74	3.47	1.58
P-111	463	8.0	True	120.0	368.72	2.35	1.54
P-172	765	12.0	True	123.0	818.25	2.32	1.48
P-126	577	8.0	True	120.0	317.11	2.02	1.46
P-275	437	8.0	True	120.0	363.54	2.32	1.42
P-206	427	12.0	True	123.0	1,080.39	3.06	1.38

Label	Length (ft)	Diameter (in)	Is Open?	Hazen-Williams C	Flow (Absolute) (gpm)	Velocity (Maximum) (ft/s)	Headloss (ft)
P-212	376	12.0	True	123.0	1,098.99	3.12	1.26
P-197	510	8.0	True	120.0	312.73	2.00	1.25
P-10	302	12.0	True	123.0	1,219.55	3.46	1.22
P-210	362	12.0	True	123.0	1,095.71	3.11	1.21
P-148	26	8.0	True	120.0	1,506.57	9.62	1.17
P-193	352	12.0	True	123.0	1,012.53	2.87	1.01
P-37	428	12.0	True	123.0	893.59	2.53	0.98
P-194	335	12.0	True	123.0	1,011.44	2.87	0.96
P-140	313	12.0	True	123.0	1,007.06	2.86	0.89
P-204	274	12.0	True	123.0	1,078.20	3.06	0.88
P-277	265	8.0	True	120.0	361.36	2.31	0.85
P-41	354	12.0	True	123.0	891.41	2.53	0.80
P-48	504	8.0	True	120.0	242.61	1.55	0.77
P-243	524	8.0	True	120.0	236.04	1.51	0.77
P-98	471	12.0	True	123.0	742.49	2.11	0.76
P-46	473	8.0	True	120.0	240.42	1.53	0.72
P-92	437	12.0	True	123.0	738.11	2.09	0.70
P-285	210	12.0	True	123.0	1,085.86	3.08	0.69
P-240	485	8.0	True	120.0	227.29	1.45	0.66
P-87	410	12.0	True	123.0	735.92	2.09	0.65
P-99	371	12.0	True	123.0	744.67	2.11	0.60
P-241	423	8.0	True	120.0	231.66	1.48	0.60
P-132	490	8.0	True	120.0	212.89	1.36	0.59
P-200	177	12.0	True	123.0	1,067.25	3.03	0.56
P-242	371	8.0	True	120.0	232.76	1.49	0.53
P-167	335	12.0	True	123.0	731.54	2.08	0.53
P-223	528	8.0	True	120.0	181.15	1.16	0.47
P-137	410	8.0	True	120.0	204.13	1.30	0.46
P-239	327	8.0	True	120.0	225.10	1.44	0.44
P-138	388	8.0	True	120.0	200.85	1.28	0.42
P-221	519	8.0	True	120.0	170.20	1.09	0.41
P-28	409	8.0	True	120.0	166.92	1.07	0.31
P-33	337	8.0	True	120.0	174.58	1.11	0.28
P-225	81	12.0	True	123.0	1,114.31	3.16	0.28
P-27	366	8.0	True	120.0	164.73	1.05	0.27
P-262	333	12.0	True	120.0	501.70	1.42	0.27

Label	Length (ft)	Diameter (in)	Is Open?	Hazen-Williams C	Flow (Absolute) (gpm)	Velocity (Maximum) (ft/s)	Headloss (ft)
P-263	330	12.0	True	120.0	503.89	1.43	0.27
P-134	242	8.0	True	120.0	205.22	1.31	0.27
P-11	486	8.0	True	120.0	139.09	0.89	0.27
P-224	282	8.0	True	120.0	185.52	1.18	0.26
P-17	413	8.0	True	120.0	142.37	0.91	0.24
P-237	168	8.0	True	120.0	222.91	1.42	0.22
P-222	233	8.0	True	120.0	174.58	1.11	0.19
P-205	56	12.0	True	123.0	1,083.67	3.07	0.18
P-272	49	8.0	True	120.0	378.57	2.42	0.17
P-198	59	8.0	True	120.0	310.54	1.98	0.14
P-25	188	8.0	True	120.0	162.54	1.04	0.14
P-196	484	8.0	True	120.0	94.37	0.60	0.13
P-176	499	8.0	True	120.0	92.18	0.59	0.13
P-95	69	12.0	True	123.0	740.30	2.10	0.11
P-182	395	8.0	True	120.0	95.47	0.61	0.11
P-9	26	12.0	True	123.0	1,221.74	3.47	0.11
P-133	88	8.0	True	120.0	210.70	1.34	0.10
P-129	41	8.0	True	120.0	312.73	2.00	0.10
P-211	29	12.0	True	123.0	1,101.18	3.12	0.10
P-24	127	8.0	True	120.0	159.26	1.02	0.09
P-207	27	12.0	True	123.0	1,092.43	3.10	0.09
P-130	25	8.0	True	120.0	312.73	2.00	0.06
P-166	17	12.0	True	123.0	735.92	2.09	0.03
P-30	25	8.0	True	120.0	174.58	1.11	0.02
P-125	479	8.0	True	120.0	27.06	0.17	0.01
P-122	284	8.0	True	120.0	23.78	0.15	0.01
P-273	363	8.0	True	120.0	17.21	0.11	0.00
P-119	150	8.0	True	120.0	23.78	0.15	0.00
P-64	225	8.0	True	120.0	2.19	0.01	0.00
P-187	492	8.0	True	120.0	4.38	0.03	0.00
P-185	292	8.0	True	120.0	2.19	0.01	0.00
P-220	431	8.0	True	120.0	2.19	0.01	0.00
P-66	324	8.0	True	120.0	2.19	0.01	0.00
P-259	677	8.0	True	120.0	2.19	0.01	0.00
P-215	241	8.0	True	120.0	6.57	0.04	0.00
P-120	27	8.0	True	120.0	23.78	0.15	0.00

Label	Length (ft)	Diameter (in)	Is Open?	Hazen-Williams C	Flow (Absolute) (gpm)	Velocity (Maximum) (ft/s)	Headloss (ft)
P-82	376	8.0	True	120.0	4.38	0.03	0.00
P-76	834	8.0	True	120.0	2.19	0.01	0.00
P-65	169	8.0	True	120.0	0.00	0.00	0.00
P-67	37	12.0	True	123.0	13.13	0.04	0.00
P-68	479	12.0	True	123.0	9.85	0.03	0.00
P-69	342	8.0	True	120.0	3.28	0.02	0.00
P-74	238	8.0	True	120.0	3.28	0.02	0.00
P-77	350	8.0	True	120.0	3.28	0.02	0.00
P-78	381	8.0	True	120.0	3.28	0.02	0.00
P-100	356	8.0	True	120.0	2.19	0.01	0.00
P-151	177	8.0	True	120.0	0.00	0.00	0.00
P-163	376	8.0	True	120.0	1.09	0.01	0.00
P-165	17	12.0	True	123.0	4.38	0.01	0.00
P-175	228	8.0	True	120.0	2.19	0.01	0.00
P-186	376	8.0	True	120.0	1.09	0.01	0.00
P-201	57	8.0	True	120.0	5.47	0.03	0.00
P-202	315	8.0	True	120.0	3.28	0.02	0.00
P-216	200	8.0	True	120.0	4.38	0.03	0.00
P-219	79	8.0	True	120.0	3.28	0.02	0.00
P-236	420	8.0	True	120.0	1.09	0.01	0.00
P-253	22	8.0	True	120.0	2.19	0.01	0.00
P-256	60	6.0	True	130.0	0.01	0.00	0.00
P-257	60	6.0	True	130.0	0.00	0.00	0.00
P-258	52	6.0	True	130.0	0.00	0.00	0.00
P-260	28	8.0	True	120.0	2.19	0.01	0.00
P-261	38	6.0	True	130.0	0.00	0.00	0.00
P-276	42	8.0	True	120.0	2.19	0.01	0.00
P-280	28	8.0	True	120.0	5.48	0.03	0.00
P-283	1,332	8.0	True	120.0	2.19	0.01	0.00

Label	Elevation (ft)	Zone	Demand (gpm)	Hydraulic Grade (ft)	Pressure (psi)
J-65	6,663.3	<None>	0.00	6,942.0	120.6
J-64	6,665.9	<None>	2.19	6,942.0	119.5
J-61	6,670.4	<None>	0.00	6,942.0	117.5
J-66	6,671.2	<None>	2.19	6,942.0	117.2
J-204	6,673.1	<None>	2.19	6,942.0	116.3
J-203	6,677.4	<None>	3.28	6,942.0	114.5
J-209	6,685.2	<None>	0.00	6,944.7	112.3
J-210	6,684.8	<None>	0.00	6,943.5	111.9
J-215	6,687.2	<None>	2.19	6,945.1	111.6
J-56	6,688.6	<None>	0.00	6,942.0	109.6
J-202	6,688.6	<None>	2.19	6,941.9	109.6
J-216	6,692.4	<None>	2.19	6,945.4	109.5
J-45	6,694.6	<None>	3.28	6,946.9	109.1
J-67	6,690.0	<None>	0.00	6,942.0	109.0
J-44	6,696.3	<None>	4.38	6,946.0	108.0
J-43	6,695.9	<None>	0.00	6,944.9	107.7
J-42	6,697.7	<None>	2.19	6,945.4	107.2
J-217	6,698.9	<None>	1.09	6,946.4	107.1
J-218	6,700.9	<None>	4.38	6,947.5	106.7
J-4	6,713.7	<None>	2.19	6,958.4	105.9
J-38	6,702.3	<None>	0.00	6,946.1	105.5
J-48	6,706.3	<None>	2.19	6,948.1	104.6
J-201	6,701.3	<None>	3.28	6,941.1	103.7
J-68	6,702.3	<None>	3.28	6,942.0	103.7
J-208	6,706.0	<None>	4.38	6,945.5	103.6
J-50	6,710.8	<None>	4.38	6,948.7	102.9
J-54	6,715.4	<None>	3.28	6,950.7	101.8
J-9	6,721.6	<None>	0.00	6,956.8	101.8
J-10	6,721.6	<None>	2.19	6,956.7	101.7
J-35	6,713.0	<None>	6.57	6,944.4	100.1
J-69	6,710.4	<None>	0.00	6,940.2	99.4
J-120	6,719.2	<None>	3.28	6,948.5	99.2
J-198	6,711.6	<None>	3.28	6,940.2	98.9
J-11	6,727.2	<None>	2.19	6,955.5	98.8
J-32	6,717.3	<None>	0.00	6,943.7	98.0
J-31	6,717.3	<None>	0.00	6,943.7	97.9



Label	Elevation (ft)	Zone	Demand (gpm)	Hydraulic Grade (ft)	Pressure (psi)
J-207	6,719.3	<None>	4.38	6,943.2	96.9
J-221	6,736.5	<None>	3.28	6,960.3	96.8
J-116	6,726.8	<None>	6.57	6,948.4	95.9
J-118	6,727.0	<None>	0.00	6,948.4	95.8
J-117	6,727.0	<None>	0.00	6,948.4	95.8
J-238	6,717.8	<None>	3.28	6,938.9	95.6
J-14	6,737.8	<None>	3.28	6,955.8	94.3
J-73	6,719.6	<None>	3.28	6,936.7	93.9
J-100	6,717.5	<None>	2.19	6,934.2	93.8
J-30	6,726.1	<None>	3.28	6,942.2	93.5
J-70	6,722.7	<None>	0.00	6,938.4	93.3
J-112	6,732.3	<None>	5.47	6,948.0	93.3
J-197	6,723.1	<None>	3.28	6,938.3	93.1
J-179	6,717.9	<None>	2.19	6,933.1	93.1
J-230	6,733.4	<None>	0.00	6,948.3	93.0
J-236	6,719.1	<None>	2.19	6,932.6	92.4
J-191	6,719.9	<None>	2.19	6,933.2	92.3
J-231	6,738.5	<None>	0.00	6,951.7	92.2
J-76	6,727.2	<None>	3.28	6,940.2	92.2
J-97	6,722.5	<None>	2.19	6,934.7	91.8
J-77	6,723.7	<None>	3.28	6,935.1	91.5
J-128	6,721.8	<None>	0.00	6,933.1	91.4
J-94	6,723.0	<None>	0.00	6,934.2	91.4
J-196	6,726.3	<None>	2.19	6,937.3	91.3
J-93	6,723.7	<None>	2.19	6,934.1	91.0
J-29	6,731.1	<None>	2.19	6,941.4	91.0
J-129	6,723.2	<None>	2.19	6,932.7	90.6
J-72	6,726.3	<None>	2.19	6,935.1	90.4
J-176	6,724.4	<None>	1.09	6,933.0	90.2
J-185	6,724.0	<None>	2.19	6,932.6	90.2
J-195	6,728.5	<None>	2.19	6,936.7	90.1
J-126	6,726.0	<None>	0.00	6,934.1	90.0
J-127	6,726.0	<None>	0.00	6,934.0	90.0
J-125	6,727.2	<None>	4.38	6,934.1	89.5
J-71	6,730.2	<None>	0.00	6,936.7	89.4
J-27	6,734.7	<None>	2.19	6,940.8	89.2

Label	Elevation (ft)	Zone	Demand (gpm)	Hydraulic Grade (ft)	Pressure (psi)
J-190	6,726.9	<None>	2.19	6,932.9	89.1
J-90	6,727.7	<None>	2.19	6,933.6	89.1
J-130	6,727.6	<None>	1.09	6,932.6	88.7
J-214	6,729.7	<None>	1.09	6,933.2	88.0
J-219	6,751.8	<None>	2.19	6,954.1	87.5
J-1	6,750.4	<None>	2.19	6,952.6	87.5
J-232	6,750.5	<None>	0.00	6,952.6	87.4
J-133	6,730.4	<None>	1.09	6,932.4	87.4
J-109	6,743.4	<None>	4.38	6,945.4	87.4
J-26	6,739.4	<None>	3.28	6,940.4	87.0
J-85	6,732.2	<None>	0.00	6,933.2	87.0
J-25	6,739.2	<None>	0.00	6,940.2	87.0
J-84	6,732.2	<None>	0.00	6,933.2	87.0
J-162	6,732.2	<None>	0.00	6,933.2	87.0
J-167	6,731.9	<None>	3.28	6,932.8	86.9
J-2	6,755.7	<None>	3.28	6,956.0	86.6
J-194	6,735.7	<None>	2.19	6,935.5	86.4
J-3	6,762.4	<None>	4.38	6,962.0	86.4
J-80	6,733.7	<None>	3.28	6,933.2	86.3
J-134	6,733.2	<None>	2.19	6,932.1	86.1
J-75	6,740.5	<None>	2.19	6,938.4	85.6
J-220	6,761.4	<None>	2.19	6,958.7	85.4
J-74	6,740.5	<None>	3.28	6,936.7	84.9
J-180	6,736.4	<None>	1.09	6,932.1	84.7
J-105	6,749.6	<None>	2.19	6,943.0	83.7
J-22	6,744.9	<None>	2.19	6,936.9	83.1
J-170	6,740.9	<None>	2.19	6,932.8	83.0
J-135	6,743.4	<None>	4.38	6,931.8	81.5
J-161	6,744.4	<None>	2.19	6,931.8	81.1
J-227	6,744.4	<None>	0.00	6,931.8	81.1
J-187	6,746.2	<None>	1.09	6,931.1	80.0
J-19	6,749.4	<None>	0.00	6,932.8	79.4
J-136	6,748.4	<None>	3.28	6,930.5	78.8
J-206	6,751.1	<None>	1.09	6,932.8	78.6
J-20	6,752.0	<None>	2.19	6,932.8	78.2
J-160	6,750.7	<None>	1.09	6,930.5	77.8

Label	Elevation (ft)	Zone	Demand (gpm)	Hydraulic Grade (ft)	Pressure (psi)
J-239	6,750.1	<None>	3.28	6,929.5	77.6
J-140	6,752.4	<None>	0.00	6,929.9	76.8
J-141	6,756.3	<None>	2.19	6,929.9	75.1
J-229	6,756.0	<None>	2.19	6,929.2	75.0
J-155	6,756.6	<None>	3.28	6,928.6	74.4
J-144	6,762.2	<None>	0.00	6,929.9	72.6
J-145	6,762.2	<None>	0.00	6,929.9	72.6
J-18	6,757.8	<None>	2.19	6,925.2	72.4
J-147	6,763.6	<None>	2.19	6,929.9	71.9
J-233	6,756.3	<None>	0.00	6,919.8	70.7
J-149	6,767.3	<None>	0.00	6,929.9	70.3
J-153	6,769.5	<None>	2.19	6,929.9	69.4
J-157	6,764.7	<None>	2.19	6,921.4	67.8
J-154	6,774.9	<None>	2.19	6,929.9	67.1
J-225	6,774.9	<None>	0.00	6,929.9	67.1
J-234	6,768.9	<None>	0.00	6,914.2	62.9
J-159	6,770.1	<None>	5.47	6,913.0	61.8

Label	Length (ft)	Diameter (in)	Is Open?	Hazen-Williams C	Flow (Absolute) (gpm)	Velocity (Maximum) (ft/s)	Headloss (ft)
P-256	60	6.0	True	130.0	1,500.00	17.02	9.44
P-159	517	8.0	True	120.0	796.76	5.09	7.19
P-279	519	8.0	True	120.0	794.57	5.07	7.18
P-281	493	8.0	True	120.0	710.90	4.54	5.55
P-278	479	8.0	True	120.0	710.90	4.54	5.39
P-55	993	12.0	True	123.0	1,348.63	3.83	4.85
P-286	379	8.0	True	120.0	713.09	4.55	4.30
P-20	358	8.0	True	120.0	719.66	4.59	4.12
P-274	1,028	8.0	True	120.0	369.17	2.36	3.44
P-287	293	8.0	True	120.0	716.38	4.57	3.35
P-23	280	8.0	True	120.0	721.85	4.61	3.24
P-248	522	8.0	True	120.0	514.92	3.29	3.23
P-107	572	8.0	True	120.0	458.17	2.92	2.85
P-247	451	8.0	True	120.0	512.73	3.27	2.77
P-114	514	8.0	True	120.0	464.74	2.97	2.64
P-49	903	12.0	True	123.0	1,012.87	2.87	2.60
P-111	463	8.0	True	120.0	460.36	2.94	2.33
P-264	257	12.0	True	123.0	1,745.16	4.95	2.02
P-53	403	12.0	True	123.0	1,345.35	3.82	1.96
P-245	559	8.0	True	120.0	373.54	2.38	1.91
P-250	467	12.0	True	123.0	1,222.59	3.47	1.90
P-249	407	12.0	True	123.0	1,225.87	3.48	1.67
P-4	387	12.0	True	123.0	1,220.40	3.46	1.57
P-275	437	8.0	True	120.0	371.36	2.37	1.48
P-229	614	12.0	True	123.0	918.25	2.60	1.47
P-284	555	12.0	True	123.0	893.08	2.53	1.26
P-280	28	8.0	True	120.0	1,505.47	9.61	1.25
P-227	515	12.0	True	123.0	918.25	2.60	1.24
P-10	302	12.0	True	123.0	1,218.21	3.46	1.22
P-199	557	12.0	True	123.0	873.38	2.48	1.22
P-223	528	8.0	True	120.0	285.56	1.82	1.10
P-221	519	8.0	True	120.0	274.62	1.75	1.00
P-172	765	12.0	True	123.0	661.92	1.88	1.00
P-126	577	8.0	True	120.0	258.83	1.65	1.00
P-206	427	12.0	True	123.0	884.32	2.51	0.96
P-277	265	8.0	True	120.0	369.17	2.36	0.89

Label	Length (ft)	Diameter (in)	Is Open?	Hazen-Williams C	Flow (Absolute) (gpm)	Velocity (Maximum) (ft/s)	Headloss (ft)
P-212	376	12.0	True	123.0	902.93	2.56	0.87
P-197	510	8.0	True	120.0	254.45	1.62	0.86
P-210	362	12.0	True	123.0	899.64	2.55	0.84
P-28	409	8.0	True	120.0	271.34	1.73	0.77
P-27	366	8.0	True	120.0	269.15	1.72	0.68
P-193	352	12.0	True	123.0	816.46	2.32	0.68
P-33	337	8.0	True	120.0	279.00	1.78	0.67
P-37	428	12.0	True	123.0	722.93	2.05	0.66
P-262	333	12.0	True	120.0	802.23	2.28	0.65
P-194	335	12.0	True	123.0	815.37	2.31	0.64
P-263	330	12.0	True	120.0	800.04	2.27	0.64
P-48	504	8.0	True	120.0	217.20	1.39	0.63
P-243	524	8.0	True	120.0	210.64	1.34	0.62
P-204	274	12.0	True	123.0	882.13	2.50	0.61
P-224	282	8.0	True	120.0	289.94	1.85	0.60
P-140	313	12.0	True	123.0	810.99	2.30	0.60
P-46	473	8.0	True	120.0	215.02	1.37	0.58
P-41	354	12.0	True	123.0	720.74	2.04	0.54
P-240	485	8.0	True	120.0	201.88	1.29	0.53
P-98	471	12.0	True	123.0	604.70	1.72	0.52
P-241	423	8.0	True	120.0	206.26	1.32	0.48
P-92	437	12.0	True	123.0	600.32	1.70	0.48
P-285	210	12.0	True	123.0	889.79	2.52	0.48
P-222	233	8.0	True	120.0	279.00	1.78	0.46
P-87	410	12.0	True	123.0	598.13	1.70	0.45
P-242	371	8.0	True	120.0	207.35	1.32	0.43
P-99	371	12.0	True	123.0	606.89	1.72	0.41
P-132	490	8.0	True	120.0	173.15	1.11	0.40
P-200	177	12.0	True	123.0	871.19	2.47	0.39
P-167	335	12.0	True	123.0	593.75	1.68	0.36
P-239	327	8.0	True	120.0	199.69	1.27	0.35
P-25	188	8.0	True	120.0	266.96	1.70	0.35
P-137	410	8.0	True	120.0	164.39	1.05	0.31
P-138	388	8.0	True	120.0	161.11	1.03	0.28
P-272	49	8.0	True	120.0	470.21	3.00	0.26
P-11	486	8.0	True	120.0	132.62	0.85	0.24

Label	Length (ft)	Diameter (in)	Is Open?	Hazen-Williams C	Flow (Absolute) (gpm)	Velocity (Maximum) (ft/s)	Headloss (ft)
P-24	127	8.0	True	120.0	263.67	1.68	0.23
P-17	413	8.0	True	120.0	135.90	0.87	0.22
P-225	81	12.0	True	123.0	918.25	2.60	0.20
P-134	242	8.0	True	120.0	165.49	1.06	0.18
P-237	168	8.0	True	120.0	197.50	1.26	0.18
P-125	479	8.0	True	120.0	110.90	0.71	0.17
P-205	56	12.0	True	123.0	887.60	2.52	0.13
P-273	363	8.0	True	120.0	101.05	0.64	0.11
P-9	26	12.0	True	123.0	1,220.40	3.46	0.11
P-198	59	8.0	True	120.0	252.26	1.61	0.10
P-122	284	8.0	True	120.0	107.61	0.69	0.10
P-196	484	8.0	True	120.0	75.83	0.48	0.09
P-176	499	8.0	True	120.0	73.64	0.47	0.08
P-95	69	12.0	True	123.0	602.51	1.71	0.08
P-182	395	8.0	True	120.0	76.92	0.49	0.07
P-133	88	8.0	True	120.0	170.96	1.09	0.07
P-129	41	8.0	True	120.0	254.45	1.62	0.07
P-211	29	12.0	True	123.0	905.11	2.57	0.07
P-207	27	12.0	True	123.0	896.36	2.54	0.06
P-119	150	8.0	True	120.0	107.61	0.69	0.05
P-30	25	8.0	True	120.0	279.00	1.78	0.05
P-130	25	8.0	True	120.0	254.45	1.62	0.04
P-166	17	12.0	True	123.0	598.13	1.70	0.02
P-120	27	8.0	True	120.0	107.61	0.69	0.01
P-186	376	8.0	True	120.0	1.09	0.01	0.00
P-187	492	8.0	True	120.0	4.38	0.03	0.00
P-153	304	8.0	True	120.0	4.38	0.03	0.00
P-185	292	8.0	True	120.0	2.19	0.01	0.00
P-220	431	8.0	True	120.0	2.19	0.01	0.00
P-149	140	8.0	True	120.0	6.57	0.04	0.00
P-215	241	8.0	True	120.0	6.57	0.04	0.00
P-82	376	8.0	True	120.0	4.38	0.03	0.00
P-216	200	8.0	True	120.0	4.38	0.03	0.00
P-202	315	8.0	True	120.0	3.28	0.02	0.00
P-76	834	8.0	True	120.0	2.19	0.01	0.00
P-64	225	8.0	True	120.0	2.19	0.01	0.00

Label	Length (ft)	Diameter (in)	Is Open?	Hazen-Williams C	Flow (Absolute) (gpm)	Velocity (Maximum) (ft/s)	Headloss (ft)
P-65	169	8.0	True	120.0	0.00	0.00	0.00
P-66	324	8.0	True	120.0	2.19	0.01	0.00
P-67	37	12.0	True	123.0	13.13	0.04	0.00
P-68	479	12.0	True	123.0	9.85	0.03	0.00
P-69	342	8.0	True	120.0	3.28	0.02	0.00
P-74	238	8.0	True	120.0	3.28	0.02	0.00
P-77	350	8.0	True	120.0	3.28	0.02	0.00
P-78	381	8.0	True	120.0	3.28	0.02	0.00
P-100	356	8.0	True	120.0	2.19	0.01	0.00
P-144	282	12.0	True	123.0	8.76	0.02	0.00
P-145	293	12.0	True	123.0	6.57	0.02	0.00
P-148	26	8.0	True	120.0	6.57	0.04	0.00
P-151	177	8.0	True	120.0	0.01	0.00	0.00
P-163	376	8.0	True	120.0	1.09	0.01	0.00
P-165	17	12.0	True	123.0	4.38	0.01	0.00
P-175	228	8.0	True	120.0	2.19	0.01	0.00
P-201	57	8.0	True	120.0	5.47	0.03	0.00
P-219	79	8.0	True	120.0	3.28	0.02	0.00
P-236	420	8.0	True	120.0	1.09	0.01	0.00
P-252	491	8.0	True	120.0	2.19	0.01	0.00
P-253	22	8.0	True	120.0	2.19	0.01	0.00
P-255	33	6.0	True	130.0	0.00	0.00	0.00
P-257	60	6.0	True	130.0	0.00	0.00	0.00
P-258	52	6.0	True	130.0	0.00	0.00	0.00
P-259	677	8.0	True	120.0	2.19	0.01	0.00
P-260	28	8.0	True	120.0	2.19	0.01	0.00
P-261	38	6.0	True	130.0	0.00	0.00	0.00
P-276	42	8.0	True	120.0	2.19	0.01	0.00
P-283	1,332	8.0	True	120.0	2.19	0.01	0.00

# AVERAGE DAY

## 105 PSI

Label	Elevation (ft)	Zone	Demand (gpm)	Hydraulic Grade (ft)	Pressure (psi)
J-65	6,663.3	<None>	0.00	7,009.9	150.0
J-64	6,665.9	<None>	0.83	7,009.9	148.8
J-61	6,670.4	<None>	0.00	7,009.9	146.9
J-66	6,671.2	<None>	0.83	7,009.9	146.5
J-204	6,673.1	<None>	0.83	7,009.9	145.7
J-203	6,677.4	<None>	1.24	7,009.9	143.9
J-210	6,684.8	<None>	0.00	7,009.9	140.7
J-209	6,685.2	<None>	0.00	7,009.9	140.5
J-215	6,687.2	<None>	0.83	7,009.9	139.6
J-56	6,688.6	<None>	0.00	7,009.9	139.0
J-202	6,688.6	<None>	0.83	7,009.9	139.0
J-67	6,690.0	<None>	0.00	7,009.9	138.4
J-216	6,692.4	<None>	0.83	7,009.9	137.4
J-45	6,694.6	<None>	1.24	7,009.9	136.4
J-43	6,695.9	<None>	0.00	7,009.9	135.9
J-44	6,696.3	<None>	1.65	7,009.9	135.7
J-42	6,697.7	<None>	0.83	7,009.9	135.1
J-217	6,698.9	<None>	0.41	7,009.9	134.6
J-218	6,700.9	<None>	1.65	7,009.9	133.7
J-201	6,701.3	<None>	1.24	7,009.9	133.5
J-38	6,702.3	<None>	0.00	7,009.9	133.1
J-68	6,702.3	<None>	1.24	7,009.9	133.1
J-208	6,706.0	<None>	1.65	7,009.9	131.5
J-48	6,706.3	<None>	0.83	7,009.9	131.4
J-69	6,710.4	<None>	0.00	7,009.9	129.6
J-50	6,710.8	<None>	1.65	7,009.9	129.4
J-198	6,711.6	<None>	1.24	7,009.9	129.1
J-35	6,713.0	<None>	2.48	7,009.9	128.5
J-4	6,713.7	<None>	0.83	7,010.0	128.2
J-54	6,715.4	<None>	1.24	7,009.9	127.4
J-31	6,717.3	<None>	0.00	7,009.9	126.6
J-32	6,717.3	<None>	0.00	7,009.9	126.6
J-100	6,717.5	<None>	0.83	7,009.9	126.5
J-238	6,717.8	<None>	1.24	7,009.9	126.4
J-179	6,717.9	<None>	0.83	7,009.9	126.3



# AVERAGE DAY

## 105 PSI

Label	Elevation (ft)	Zone	Demand (gpm)	Hydraulic Grade (ft)	Pressure (psi)
J-236	6,719.1	<None>	0.83	7,009.9	125.8
J-120	6,719.2	<None>	1.24	7,009.9	125.8
J-207	6,719.3	<None>	1.65	7,009.9	125.7
J-73	6,719.6	<None>	1.24	7,009.9	125.6
J-191	6,719.9	<None>	0.83	7,009.9	125.5
J-9	6,721.6	<None>	0.00	7,010.0	124.8
J-10	6,721.6	<None>	0.83	7,010.0	124.8
J-128	6,721.8	<None>	0.00	7,009.9	124.7
J-97	6,722.5	<None>	0.83	7,009.9	124.4
J-70	6,722.7	<None>	0.00	7,009.9	124.3
J-94	6,723.0	<None>	0.00	7,009.9	124.1
J-197	6,723.1	<None>	1.24	7,009.9	124.1
J-129	6,723.2	<None>	0.83	7,009.9	124.0
J-77	6,723.7	<None>	1.24	7,009.9	123.8
J-93	6,723.7	<None>	0.83	7,009.9	123.8
J-185	6,724.0	<None>	0.83	7,009.9	123.7
J-176	6,724.4	<None>	0.41	7,009.9	123.5
J-126	6,726.0	<None>	0.00	7,009.9	122.8
J-127	6,726.0	<None>	0.00	7,009.9	122.8
J-30	6,726.1	<None>	1.24	7,009.9	122.8
J-72	6,726.3	<None>	0.83	7,009.9	122.7
J-196	6,726.3	<None>	0.83	7,009.9	122.7
J-116	6,726.8	<None>	2.48	7,009.9	122.5
J-190	6,726.9	<None>	0.83	7,009.9	122.4
J-117	6,727.0	<None>	0.00	7,009.9	122.4
J-118	6,727.0	<None>	0.00	7,009.9	122.4
J-11	6,727.2	<None>	0.83	7,010.0	122.3
J-76	6,727.2	<None>	1.24	7,009.9	122.3
J-125	6,727.2	<None>	1.65	7,009.9	122.3
J-130	6,727.6	<None>	0.41	7,009.9	122.1
J-90	6,727.7	<None>	0.83	7,009.9	122.1
J-195	6,728.5	<None>	0.83	7,009.9	121.8
J-214	6,729.7	<None>	0.41	7,009.9	121.2
J-71	6,730.2	<None>	0.00	7,009.9	121.0
J-133	6,730.4	<None>	0.41	7,009.9	120.9

# AVERAGE DAY

## 105 PSI

Label	Elevation (ft)	Zone	Demand (gpm)	Hydraulic Grade (ft)	Pressure (psi)
J-29	6,731.1	<None>	0.83	7,009.9	120.6
J-167	6,731.9	<None>	1.24	7,009.9	120.3
J-84	6,732.2	<None>	0.00	7,009.9	120.2
J-85	6,732.2	<None>	0.00	7,009.9	120.2
J-162	6,732.2	<None>	0.00	7,009.9	120.2
J-112	6,732.3	<None>	2.07	7,009.9	120.1
J-134	6,733.2	<None>	0.83	7,009.9	119.7
J-230	6,733.4	<None>	0.00	7,009.9	119.6
J-80	6,733.7	<None>	1.24	7,009.9	119.5
J-27	6,734.7	<None>	0.83	7,009.9	119.1
J-194	6,735.7	<None>	0.83	7,009.9	118.6
J-180	6,736.4	<None>	0.41	7,009.9	118.3
J-221	6,736.5	<None>	1.24	7,010.0	118.3
J-14	6,737.8	<None>	1.24	7,010.0	117.8
J-231	6,738.5	<None>	0.00	7,010.0	117.4
J-25	6,739.2	<None>	0.00	7,009.9	117.1
J-26	6,739.4	<None>	1.24	7,009.9	117.0
J-75	6,740.5	<None>	0.83	7,009.9	116.6
J-74	6,740.5	<None>	1.24	7,009.9	116.6
J-170	6,740.9	<None>	0.83	7,009.9	116.4
J-109	6,743.4	<None>	1.65	7,009.9	115.3
J-135	6,743.4	<None>	1.65	7,009.9	115.3
J-161	6,744.4	<None>	0.83	7,009.9	114.9
J-227	6,744.4	<None>	0.00	7,009.9	114.9
J-22	6,744.9	<None>	0.83	7,009.9	114.7
J-187	6,746.2	<None>	0.41	7,009.9	114.1
J-136	6,748.4	<None>	1.24	7,009.9	113.1
J-19	6,749.4	<None>	0.00	7,009.9	112.7
J-105	6,749.6	<None>	0.83	7,009.9	112.6
J-239	6,750.1	<None>	1.24	7,009.9	112.4
J-1	6,750.4	<None>	0.83	7,010.0	112.3
J-232	6,750.5	<None>	0.00	7,010.0	112.3
J-160	6,750.7	<None>	0.41	7,009.9	112.1
J-206	6,751.1	<None>	0.41	7,009.9	112.0
J-219	6,751.8	<None>	0.83	7,010.0	111.7

# AVERAGE DAY

105 PSI

Label	Elevation (ft)	Zone	Demand (gpm)	Hydraulic Grade (ft)	Pressure (psi)
J-20	6,752.0	<None>	0.83	7,009.9	111.6
J-140	6,752.4	<None>	0.00	7,009.9	111.4
J-2	6,755.7	<None>	1.24	7,010.0	110.0
J-229	6,756.0	<None>	0.83	7,009.9	109.9
J-233	6,756.3	<None>	0.00	7,009.9	109.7
J-141	6,756.3	<None>	0.83	7,009.9	109.7
J-155	6,756.6	<None>	1.24	7,009.9	109.6
J-18	6,757.8	<None>	0.83	7,009.9	109.1
J-220	6,761.4	<None>	0.83	7,010.0	107.5
J-144	6,762.2	<None>	0.00	7,009.9	107.2
J-145	6,762.2	<None>	0.00	7,009.9	107.2
J-3	6,762.4	<None>	1.65	7,010.0	107.1
J-147	6,763.6	<None>	0.83	7,009.9	106.6
J-157	6,764.7	<None>	0.83	7,009.9	106.1
J-149	6,767.3	<None>	0.00	7,009.9	105.0
J-234	6,768.9	<None>	0.00	7,009.9	104.3
J-153	6,769.5	<None>	0.83	7,009.9	104.0
J-159	6,770.1	<None>	2.07	7,009.9	103.8
J-154	6,774.9	<None>	0.83	7,009.9	101.7
J-225	6,774.9	<None>	0.00	7,009.9	101.7

# AVERAGE DAY

## 105 PSI

Label	Length (ft)	Diameter (in)	Is Open?	Hazen-Williams C	Flow (Absolute) (gpm)	Velocity (Maximum) (ft/s)	Headloss (ft)
P-55	993	12.0	True	123.0	65.29	0.19	0.02
P-248	522	8.0	True	120.0	26.96	0.17	0.01
P-274	1,028	8.0	True	120.0	16.90	0.11	0.01
P-247	451	8.0	True	120.0	26.14	0.17	0.01
P-264	257	12.0	True	123.0	92.52	0.26	0.01
P-49	903	12.0	True	123.0	45.06	0.13	0.01
P-250	467	12.0	True	123.0	62.67	0.18	0.01
P-245	559	8.0	True	120.0	18.56	0.12	0.01
P-249	407	12.0	True	123.0	63.90	0.18	0.01
P-53	403	12.0	True	123.0	64.05	0.18	0.01
P-4	387	12.0	True	123.0	61.84	0.18	0.01
P-275	437	8.0	True	120.0	17.73	0.11	0.01
P-114	514	8.0	True	120.0	15.97	0.10	0.01
P-10	302	12.0	True	123.0	61.01	0.17	0.00
P-229	614	12.0	True	123.0	37.92	0.11	0.00
P-111	463	8.0	True	120.0	14.32	0.09	0.00
P-107	572	8.0	True	120.0	13.49	0.09	0.00
P-48	504	8.0	True	120.0	12.49	0.08	0.00
P-227	515	12.0	True	123.0	37.92	0.11	0.00
P-277	265	8.0	True	120.0	16.90	0.11	0.00
P-20	358	8.0	True	120.0	14.12	0.09	0.00
P-284	555	12.0	True	123.0	28.42	0.08	0.00
P-278	479	8.0	True	120.0	10.81	0.07	0.00
P-281	493	8.0	True	120.0	10.81	0.07	0.00
P-46	473	8.0	True	120.0	11.66	0.07	0.00
P-37	428	12.0	True	123.0	33.69	0.10	0.00
P-243	524	8.0	True	120.0	10.01	0.06	0.00
P-23	280	8.0	True	120.0	14.95	0.10	0.00
P-212	376	12.0	True	123.0	32.14	0.09	0.00
P-286	379	8.0	True	120.0	11.65	0.07	0.00
P-287	293	8.0	True	120.0	12.89	0.08	0.00
P-223	528	8.0	True	120.0	9.72	0.06	0.00
P-279	519	8.0	True	120.0	8.75	0.06	0.00
P-41	354	12.0	True	123.0	32.87	0.09	0.00
P-241	423	8.0	True	120.0	8.36	0.05	0.00

# AVERAGE DAY

105 PSI

Label	Length (ft)	Diameter (in)	Is Open?	Hazen-Williams C	Flow (Absolute) (gpm)	Velocity (Maximum) (ft/s)	Headloss (ft)
P-224	282	8.0	True	120.0	11.37	0.07	0.00
P-210	362	12.0	True	123.0	30.90	0.09	0.00
P-240	485	8.0	True	120.0	6.71	0.04	0.00
P-242	371	8.0	True	120.0	8.77	0.06	0.00
P-221	519	8.0	True	120.0	5.59	0.04	0.00
P-126	577	8.0	True	120.0	5.64	0.04	0.00
P-204	274	12.0	True	123.0	24.29	0.07	0.00
P-17	413	8.0	True	120.0	6.34	0.04	0.00
P-159	517	8.0	True	120.0	7.92	0.05	0.00
P-199	557	12.0	True	123.0	20.99	0.06	0.00
P-206	427	12.0	True	123.0	25.12	0.07	0.00
P-225	81	12.0	True	123.0	37.92	0.11	0.00
P-33	337	8.0	True	120.0	7.24	0.05	0.00
P-125	479	8.0	True	120.0	4.85	0.03	0.00
P-200	177	12.0	True	123.0	20.16	0.06	0.00
P-28	409	8.0	True	120.0	4.35	0.03	0.00
P-167	335	12.0	True	123.0	7.50	0.02	0.00
P-239	327	8.0	True	120.0	5.88	0.04	0.00
P-99	371	12.0	True	123.0	12.46	0.04	0.00
P-9	26	12.0	True	123.0	61.84	0.18	0.00
P-92	437	12.0	True	123.0	9.98	0.03	0.00
P-205	56	12.0	True	123.0	26.36	0.07	0.00
P-285	210	12.0	True	123.0	27.18	0.08	0.00
P-197	510	8.0	True	120.0	3.99	0.03	0.00
P-263	330	12.0	True	120.0	6.68	0.02	0.00
P-272	49	8.0	True	120.0	18.04	0.12	0.00
P-222	233	8.0	True	120.0	7.24	0.05	0.00
P-11	486	8.0	True	120.0	5.10	0.03	0.00
P-24	127	8.0	True	120.0	1.46	0.01	0.00
P-25	188	8.0	True	120.0	2.70	0.02	0.00
P-27	366	8.0	True	120.0	3.52	0.02	0.00
P-30	25	8.0	True	120.0	7.24	0.05	0.00
P-64	225	8.0	True	120.0	0.83	0.01	0.00
P-65	169	8.0	True	120.0	0.00	0.00	0.00
P-66	324	8.0	True	120.0	0.83	0.01	0.00

# AVERAGE DAY

## 105 PSI

Label	Length (ft)	Diameter (in)	Is Open?	Hazen-Williams C	Flow (Absolute) (gpm)	Velocity (Maximum) (ft/s)	Headloss (ft)
P-67	37	12.0	True	123.0	4.96	0.01	0.00
P-68	479	12.0	True	123.0	3.72	0.01	0.00
P-69	342	8.0	True	120.0	1.24	0.01	0.00
P-74	238	8.0	True	120.0	1.24	0.01	0.00
P-76	834	8.0	True	120.0	0.83	0.01	0.00
P-77	350	8.0	True	120.0	1.24	0.01	0.00
P-78	381	8.0	True	120.0	1.24	0.01	0.00
P-82	376	8.0	True	120.0	1.65	0.01	0.00
P-87	410	12.0	True	123.0	9.15	0.03	0.00
P-95	69	12.0	True	123.0	10.81	0.03	0.00
P-98	471	12.0	True	123.0	11.63	0.03	0.00
P-100	356	8.0	True	120.0	0.83	0.01	0.00
P-119	150	8.0	True	120.0	3.61	0.02	0.00
P-120	27	8.0	True	120.0	3.61	0.02	0.00
P-122	284	8.0	True	120.0	3.61	0.02	0.00
P-129	41	8.0	True	120.0	3.99	0.03	0.00
P-130	25	8.0	True	120.0	3.99	0.03	0.00
P-132	490	8.0	True	120.0	2.37	0.02	0.00
P-133	88	8.0	True	120.0	1.54	0.01	0.00
P-134	242	8.0	True	120.0	0.52	0.00	0.00
P-137	410	8.0	True	120.0	0.94	0.01	0.00
P-138	388	8.0	True	120.0	2.18	0.01	0.00
P-140	313	12.0	True	123.0	2.55	0.01	0.00
P-144	282	12.0	True	123.0	3.30	0.01	0.00
P-145	293	12.0	True	123.0	2.48	0.01	0.00
P-148	26	8.0	True	120.0	2.48	0.02	0.00
P-149	140	8.0	True	120.0	2.48	0.02	0.00
P-151	177	8.0	True	120.0	0.00	0.00	0.00
P-153	304	8.0	True	120.0	1.65	0.01	0.00
P-163	376	8.0	True	120.0	0.41	0.00	0.00
P-165	17	12.0	True	123.0	1.65	0.00	0.00
P-166	17	12.0	True	123.0	9.15	0.03	0.00
P-172	765	12.0	True	123.0	4.17	0.01	0.00
P-175	228	8.0	True	120.0	0.83	0.01	0.00
P-176	499	8.0	True	120.0	1.27	0.01	0.00

# AVERAGE DAY

## 105 PSI

Label	Length (ft)	Diameter (in)	Is Open?	Hazen-Williams C	Flow (Absolute) (gpm)	Velocity (Maximum) (ft/s)	Headloss (ft)
P-182	395	8.0	True	120.0	0.03	0.00	0.00
P-185	292	8.0	True	120.0	0.83	0.01	0.00
P-186	376	8.0	True	120.0	0.41	0.00	0.00
P-187	492	8.0	True	120.0	1.65	0.01	0.00
P-193	352	12.0	True	123.0	0.49	0.00	0.00
P-194	335	12.0	True	123.0	0.90	0.00	0.00
P-196	484	8.0	True	120.0	0.45	0.00	0.00
P-198	59	8.0	True	120.0	3.16	0.02	0.00
P-201	57	8.0	True	120.0	2.07	0.01	0.00
P-202	315	8.0	True	120.0	1.24	0.01	0.00
P-207	27	12.0	True	123.0	29.66	0.08	0.00
P-211	29	12.0	True	123.0	32.96	0.09	0.00
P-215	241	8.0	True	120.0	2.48	0.02	0.00
P-216	200	8.0	True	120.0	1.65	0.01	0.00
P-219	79	8.0	True	120.0	1.24	0.01	0.00
P-220	431	8.0	True	120.0	0.83	0.01	0.00
P-236	420	8.0	True	120.0	0.41	0.00	0.00
P-237	168	8.0	True	120.0	5.05	0.03	0.00
P-252	491	8.0	True	120.0	0.83	0.01	0.00
P-253	22	8.0	True	120.0	0.83	0.01	0.00
P-255	33	6.0	True	130.0	0.00	0.00	0.00
P-256	60	6.0	True	130.0	0.00	0.00	0.00
P-257	60	6.0	True	130.0	0.00	0.00	0.00
P-258	52	6.0	True	130.0	0.00	0.00	0.00
P-259	677	8.0	True	120.0	0.83	0.01	0.00
P-260	28	8.0	True	120.0	0.83	0.01	0.00
P-261	38	6.0	True	130.0	0.00	0.00	0.00
P-262	333	12.0	True	120.0	5.86	0.02	0.00
P-273	363	8.0	True	120.0	1.13	0.01	0.00
P-276	42	8.0	True	120.0	0.83	0.01	0.00
P-280	28	8.0	True	120.0	2.07	0.01	0.00
P-283	1,332	8.0	True	120.0	0.83	0.01	0.00

# MAX DAY

## 105 PSI

Label	Elevation (ft)	Zone	Demand (gpm)	Hydraulic Grade (ft)	Pressure (psi)
J-65	6,663.3	<None>	0.00	7,009.5	149.8
J-64	6,665.9	<None>	2.19	7,009.5	148.7
J-61	6,670.4	<None>	0.00	7,009.5	146.7
J-66	6,671.2	<None>	2.19	7,009.5	146.4
J-204	6,673.1	<None>	2.19	7,009.5	145.6
J-203	6,677.4	<None>	3.28	7,009.5	143.7
J-210	6,684.8	<None>	0.00	7,009.5	140.5
J-209	6,685.2	<None>	0.00	7,009.6	140.3
J-215	6,687.2	<None>	2.19	7,009.6	139.5
J-56	6,688.6	<None>	0.00	7,009.5	138.8
J-202	6,688.6	<None>	2.19	7,009.5	138.8
J-67	6,690.0	<None>	0.00	7,009.5	138.2
J-216	6,692.4	<None>	2.19	7,009.6	137.2
J-45	6,694.6	<None>	3.28	7,009.6	136.3
J-43	6,695.9	<None>	0.00	7,009.6	135.7
J-44	6,696.3	<None>	4.38	7,009.6	135.5
J-42	6,697.7	<None>	2.19	7,009.6	134.9
J-217	6,698.9	<None>	1.09	7,009.6	134.4
J-218	6,700.9	<None>	4.38	7,009.6	133.6
J-201	6,701.3	<None>	3.28	7,009.5	133.3
J-38	6,702.3	<None>	0.00	7,009.6	132.9
J-68	6,702.3	<None>	3.28	7,009.5	132.9
J-208	6,706.0	<None>	4.38	7,009.6	131.3
J-48	6,706.3	<None>	2.19	7,009.6	131.2
J-69	6,710.4	<None>	0.00	7,009.5	129.4
J-50	6,710.8	<None>	4.38	7,009.6	129.3
J-198	6,711.6	<None>	3.28	7,009.5	128.9
J-35	6,713.0	<None>	6.57	7,009.6	128.3
J-4	6,713.7	<None>	2.19	7,009.9	128.1
J-54	6,715.4	<None>	3.28	7,009.7	127.3
J-32	6,717.3	<None>	0.00	7,009.6	126.4
J-31	6,717.3	<None>	0.00	7,009.6	126.4
J-100	6,717.5	<None>	2.19	7,009.4	126.3
J-238	6,717.8	<None>	3.28	7,009.5	126.2
J-179	6,717.9	<None>	2.19	7,009.4	126.1



# MAX DAY

## 105 PSI

Label	Elevation (ft)	Zone	Demand (gpm)	Hydraulic Grade (ft)	Pressure (psi)
J-120	6,719.2	<None>	3.28	7,009.6	125.7
J-236	6,719.1	<None>	2.19	7,009.4	125.6
J-207	6,719.3	<None>	4.38	7,009.6	125.6
J-73	6,719.6	<None>	3.28	7,009.5	125.4
J-191	6,719.9	<None>	2.19	7,009.4	125.3
J-9	6,721.6	<None>	0.00	7,009.8	124.7
J-10	6,721.6	<None>	2.19	7,009.8	124.7
J-128	6,721.8	<None>	0.00	7,009.4	124.4
J-97	6,722.5	<None>	2.19	7,009.4	124.2
J-70	6,722.7	<None>	0.00	7,009.5	124.1
J-94	6,723.0	<None>	0.00	7,009.4	123.9
J-197	6,723.1	<None>	3.28	7,009.5	123.9
J-129	6,723.2	<None>	2.19	7,009.4	123.8
J-77	6,723.7	<None>	3.28	7,009.5	123.6
J-93	6,723.7	<None>	2.19	7,009.4	123.6
J-185	6,724.0	<None>	2.19	7,009.4	123.5
J-176	6,724.4	<None>	1.09	7,009.4	123.3
J-30	6,726.1	<None>	3.28	7,009.6	122.6
J-126	6,726.0	<None>	0.00	7,009.4	122.6
J-127	6,726.0	<None>	0.00	7,009.4	122.6
J-72	6,726.3	<None>	2.19	7,009.5	122.5
J-196	6,726.3	<None>	2.19	7,009.5	122.5
J-116	6,726.8	<None>	6.57	7,009.6	122.4
J-117	6,727.0	<None>	0.00	7,009.6	122.3
J-118	6,727.0	<None>	0.00	7,009.6	122.3
J-11	6,727.2	<None>	2.19	7,009.8	122.3
J-190	6,726.9	<None>	2.19	7,009.4	122.2
J-76	6,727.2	<None>	3.28	7,009.5	122.1
J-125	6,727.2	<None>	4.38	7,009.4	122.1
J-130	6,727.6	<None>	1.09	7,009.4	121.9
J-90	6,727.7	<None>	2.19	7,009.4	121.9
J-195	6,728.5	<None>	2.19	7,009.5	121.6
J-214	6,729.7	<None>	1.09	7,009.4	121.0
J-71	6,730.2	<None>	0.00	7,009.5	120.8
J-133	6,730.4	<None>	1.09	7,009.4	120.7

# MAX DAY

## 105 PSI

Label	Elevation (ft)	Zone	Demand (gpm)	Hydraulic Grade (ft)	Pressure (psi)
J-29	6,731.1	<None>	2.19	7,009.6	120.5
J-167	6,731.9	<None>	3.28	7,009.4	120.1
J-112	6,732.3	<None>	5.47	7,009.6	120.0
J-84	6,732.2	<None>	0.00	7,009.4	120.0
J-85	6,732.2	<None>	0.00	7,009.4	120.0
J-162	6,732.2	<None>	0.00	7,009.4	120.0
J-134	6,733.2	<None>	2.19	7,009.4	119.5
J-230	6,733.4	<None>	0.00	7,009.6	119.5
J-80	6,733.7	<None>	3.28	7,009.4	119.3
J-27	6,734.7	<None>	2.19	7,009.5	118.9
J-194	6,735.7	<None>	2.19	7,009.5	118.4
J-221	6,736.5	<None>	3.28	7,009.9	118.3
J-180	6,736.4	<None>	1.09	7,009.4	118.1
J-14	6,737.8	<None>	3.28	7,009.8	117.7
J-231	6,738.5	<None>	0.00	7,009.7	117.3
J-25	6,739.2	<None>	0.00	7,009.5	117.0
J-26	6,739.4	<None>	3.28	7,009.5	116.9
J-75	6,740.5	<None>	2.19	7,009.5	116.4
J-74	6,740.5	<None>	3.28	7,009.5	116.4
J-170	6,740.9	<None>	2.19	7,009.4	116.2
J-109	6,743.4	<None>	4.38	7,009.6	115.2
J-135	6,743.4	<None>	4.38	7,009.4	115.1
J-161	6,744.4	<None>	2.19	7,009.4	114.7
J-227	6,744.4	<None>	0.00	7,009.4	114.7
J-22	6,744.9	<None>	2.19	7,009.5	114.5
J-187	6,746.2	<None>	1.09	7,009.4	113.9
J-136	6,748.4	<None>	3.28	7,009.4	112.9
J-19	6,749.4	<None>	0.00	7,009.5	112.5
J-105	6,749.6	<None>	2.19	7,009.6	112.5
J-239	6,750.1	<None>	3.28	7,009.5	112.2
J-1	6,750.4	<None>	2.19	7,009.7	112.2
J-232	6,750.5	<None>	0.00	7,009.7	112.2
J-160	6,750.7	<None>	1.09	7,009.4	111.9
J-206	6,751.1	<None>	1.09	7,009.5	111.8
J-219	6,751.8	<None>	2.19	7,009.8	111.6

# MAX DAY

## 105 PSI

Label	Elevation (ft)	Zone	Demand (gpm)	Hydraulic Grade (ft)	Pressure (psi)
J-20	6,752.0	<None>	2.19	7,009.5	111.4
J-140	6,752.4	<None>	0.00	7,009.4	111.2
J-2	6,755.7	<None>	3.28	7,009.8	109.9
J-229	6,756.0	<None>	2.19	7,009.4	109.7
J-233	6,756.3	<None>	0.00	7,009.5	109.5
J-141	6,756.3	<None>	2.19	7,009.4	109.5
J-155	6,756.6	<None>	3.28	7,009.4	109.4
J-18	6,757.8	<None>	2.19	7,009.5	108.9
J-220	6,761.4	<None>	2.19	7,009.9	107.5
J-3	6,762.4	<None>	4.38	7,009.9	107.1
J-144	6,762.2	<None>	0.00	7,009.4	107.0
J-145	6,762.2	<None>	0.00	7,009.4	107.0
J-147	6,763.6	<None>	2.19	7,009.4	106.4
J-157	6,764.7	<None>	2.19	7,009.5	105.9
J-149	6,767.3	<None>	0.00	7,009.4	104.8
J-234	6,768.9	<None>	0.00	7,009.5	104.1
J-153	6,769.5	<None>	2.19	7,009.4	103.8
J-159	6,770.1	<None>	5.47	7,009.5	103.6
J-154	6,774.9	<None>	2.19	7,009.4	101.5
J-225	6,774.9	<None>	0.00	7,009.4	101.5

# MAX DAY

## 105 PSI

Label	Length (ft)	Diameter (in)	Is Open?	Hazen-Williams C	Flow (Absolute) (gpm)	Velocity (Maximum) (ft/s)	Headloss (ft)
P-55	993	12.0	True	123.0	173.01	0.49	0.11
P-248	522	8.0	True	120.0	71.44	0.46	0.08
P-274	1,028	8.0	True	120.0	44.79	0.29	0.07
P-247	451	8.0	True	120.0	69.26	0.44	0.07
P-264	257	12.0	True	123.0	245.16	0.70	0.05
P-49	903	12.0	True	123.0	119.40	0.34	0.05
P-250	467	12.0	True	123.0	166.06	0.47	0.05
P-245	559	8.0	True	120.0	49.17	0.31	0.04
P-249	407	12.0	True	123.0	169.34	0.48	0.04
P-53	403	12.0	True	123.0	169.73	0.48	0.04
P-4	387	12.0	True	123.0	163.87	0.46	0.04
P-275	437	8.0	True	120.0	46.98	0.30	0.03
P-114	514	8.0	True	120.0	42.32	0.27	0.03
P-10	302	12.0	True	123.0	161.68	0.46	0.03
P-107	572	8.0	True	120.0	35.75	0.23	0.03
P-229	614	12.0	True	123.0	100.48	0.29	0.02
P-111	463	8.0	True	120.0	37.94	0.24	0.02
P-227	515	12.0	True	123.0	100.48	0.29	0.02
P-48	504	8.0	True	120.0	33.09	0.21	0.02
P-277	265	8.0	True	120.0	44.79	0.29	0.02
P-20	358	8.0	True	120.0	37.42	0.24	0.02
P-46	473	8.0	True	120.0	30.90	0.20	0.02
P-23	280	8.0	True	120.0	39.61	0.25	0.02
P-281	493	8.0	True	120.0	28.67	0.18	0.01
P-278	479	8.0	True	120.0	28.67	0.18	0.01
P-37	428	12.0	True	123.0	89.28	0.25	0.01
P-243	524	8.0	True	120.0	26.52	0.17	0.01
P-223	528	8.0	True	120.0	25.74	0.16	0.01
P-286	379	8.0	True	120.0	30.86	0.20	0.01
P-284	555	12.0	True	123.0	75.31	0.21	0.01
P-287	293	8.0	True	120.0	34.14	0.22	0.01
P-279	519	8.0	True	120.0	23.19	0.15	0.01
P-41	354	12.0	True	123.0	87.09	0.25	0.01
P-212	376	12.0	True	123.0	85.16	0.24	0.01
P-210	362	12.0	True	123.0	81.88	0.23	0.01

# MAX DAY

## 105 PSI

Label	Length (ft)	Diameter (in)	Is Open?	Hazen-Williams C	Flow (Absolute) (gpm)	Velocity (Maximum) (ft/s)	Headloss (ft)
P-224	282	8.0	True	120.0	30.12	0.19	0.01
P-159	517	8.0	True	120.0	21.00	0.13	0.01
P-206	427	12.0	True	123.0	66.56	0.19	0.01
P-241	423	8.0	True	120.0	22.15	0.14	0.01
P-242	371	8.0	True	120.0	23.24	0.15	0.01
P-199	557	12.0	True	123.0	55.61	0.16	0.01
P-240	485	8.0	True	120.0	17.77	0.11	0.01
P-285	210	12.0	True	123.0	72.03	0.20	0.00
P-204	274	12.0	True	123.0	64.37	0.18	0.00
P-126	577	8.0	True	120.0	14.94	0.10	0.00
P-17	413	8.0	True	120.0	16.80	0.11	0.00
P-33	337	8.0	True	120.0	19.18	0.12	0.00
P-221	519	8.0	True	120.0	14.80	0.09	0.00
P-225	81	12.0	True	123.0	100.48	0.29	0.00
P-11	486	8.0	True	120.0	13.52	0.09	0.00
P-222	233	8.0	True	120.0	19.18	0.12	0.00
P-125	479	8.0	True	120.0	12.85	0.08	0.00
P-239	327	8.0	True	120.0	15.58	0.10	0.00
P-272	49	8.0	True	120.0	47.79	0.31	0.00
P-9	26	12.0	True	123.0	163.87	0.46	0.00
P-197	510	8.0	True	120.0	10.56	0.07	0.00
P-200	177	12.0	True	123.0	53.42	0.15	0.00
P-98	471	12.0	True	123.0	30.82	0.09	0.00
P-28	409	8.0	True	120.0	11.52	0.07	0.00
P-99	371	12.0	True	123.0	33.01	0.09	0.00
P-87	410	12.0	True	123.0	24.26	0.07	0.00
P-92	437	12.0	True	123.0	26.45	0.08	0.00
P-27	366	8.0	True	120.0	9.33	0.06	0.00
P-211	29	12.0	True	123.0	87.35	0.25	0.00
P-138	388	8.0	True	120.0	5.77	0.04	0.00
P-122	284	8.0	True	120.0	9.57	0.06	0.00
P-132	490	8.0	True	120.0	6.27	0.04	0.00
P-205	56	12.0	True	123.0	69.84	0.20	0.00
P-119	150	8.0	True	120.0	9.57	0.06	0.00
P-237	168	8.0	True	120.0	13.39	0.09	0.00

# MAX DAY

## 105 PSI

Label	Length (ft)	Diameter (in)	Is Open?	Hazen-Williams C	Flow (Absolute) (gpm)	Velocity (Maximum) (ft/s)	Headloss (ft)
P-172	765	12.0	True	123.0	11.04	0.03	0.00
P-187	492	8.0	True	120.0	4.38	0.03	0.00
P-176	499	8.0	True	120.0	3.37	0.02	0.00
P-153	304	8.0	True	120.0	4.38	0.03	0.00
P-129	41	8.0	True	120.0	10.56	0.07	0.00
P-167	335	12.0	True	123.0	19.88	0.06	0.00
P-220	431	8.0	True	120.0	2.19	0.01	0.00
P-259	677	8.0	True	120.0	2.19	0.01	0.00
P-30	25	8.0	True	120.0	19.18	0.12	0.00
P-215	241	8.0	True	120.0	6.57	0.04	0.00
P-82	376	8.0	True	120.0	4.38	0.03	0.00
P-216	200	8.0	True	120.0	4.38	0.03	0.00
P-202	315	8.0	True	120.0	3.28	0.02	0.00
P-207	27	12.0	True	123.0	78.60	0.22	0.00
P-280	28	8.0	True	120.0	5.47	0.03	0.00
P-145	293	12.0	True	123.0	6.57	0.02	0.00
P-262	333	12.0	True	120.0	15.53	0.04	0.00
P-263	330	12.0	True	120.0	17.72	0.05	0.00
P-25	188	8.0	True	120.0	7.14	0.05	0.00
P-24	127	8.0	True	120.0	3.86	0.02	0.00
P-64	225	8.0	True	120.0	2.19	0.01	0.00
P-65	169	8.0	True	120.0	0.00	0.00	0.00
P-66	324	8.0	True	120.0	2.19	0.01	0.00
P-67	37	12.0	True	123.0	13.13	0.04	0.00
P-68	479	12.0	True	123.0	9.85	0.03	0.00
P-69	342	8.0	True	120.0	3.28	0.02	0.00
P-74	238	8.0	True	120.0	3.28	0.02	0.00
P-76	834	8.0	True	120.0	2.19	0.01	0.00
P-77	350	8.0	True	120.0	3.28	0.02	0.00
P-78	381	8.0	True	120.0	3.28	0.02	0.00
P-95	69	12.0	True	123.0	28.64	0.08	0.00
P-100	356	8.0	True	120.0	2.19	0.01	0.00
P-120	27	8.0	True	120.0	9.57	0.06	0.00
P-130	25	8.0	True	120.0	10.56	0.07	0.00
P-133	88	8.0	True	120.0	4.08	0.03	0.00

# MAX DAY

## 105 PSI

Label	Length (ft)	Diameter (in)	Is Open?	Hazen-Williams C	Flow (Absolute) (gpm)	Velocity (Maximum) (ft/s)	Headloss (ft)
P-134	242	8.0	True	120.0	1.39	0.01	0.00
P-137	410	8.0	True	120.0	2.48	0.02	0.00
P-140	313	12.0	True	123.0	6.77	0.02	0.00
P-144	282	12.0	True	123.0	8.76	0.02	0.00
P-148	26	8.0	True	120.0	6.57	0.04	0.00
P-149	140	8.0	True	120.0	6.57	0.04	0.00
P-151	177	8.0	True	120.0	0.00	0.00	0.00
P-163	376	8.0	True	120.0	1.09	0.01	0.00
P-165	17	12.0	True	123.0	4.38	0.01	0.00
P-166	17	12.0	True	123.0	24.26	0.07	0.00
P-175	228	8.0	True	120.0	2.19	0.01	0.00
P-182	395	8.0	True	120.0	0.09	0.00	0.00
P-185	292	8.0	True	120.0	2.19	0.01	0.00
P-186	376	8.0	True	120.0	1.09	0.01	0.00
P-193	352	12.0	True	123.0	1.30	0.00	0.00
P-194	335	12.0	True	123.0	2.39	0.01	0.00
P-196	484	8.0	True	120.0	1.18	0.01	0.00
P-198	59	8.0	True	120.0	8.37	0.05	0.00
P-201	57	8.0	True	120.0	5.47	0.03	0.00
P-219	79	8.0	True	120.0	3.28	0.02	0.00
P-236	420	8.0	True	120.0	1.09	0.01	0.00
P-252	491	8.0	True	120.0	2.19	0.01	0.00
P-253	22	8.0	True	120.0	2.19	0.01	0.00
P-255	33	6.0	True	130.0	0.00	0.00	0.00
P-256	60	6.0	True	130.0	0.00	0.00	0.00
P-257	60	6.0	True	130.0	0.00	0.00	0.00
P-258	52	6.0	True	130.0	0.00	0.00	0.00
P-260	28	8.0	True	120.0	2.19	0.01	0.00
P-261	38	6.0	True	130.0	0.00	0.00	0.00
P-273	363	8.0	True	120.0	3.00	0.02	0.00
P-276	42	8.0	True	120.0	2.19	0.01	0.00
P-283	1,332	8.0	True	120.0	2.19	0.01	0.00

Label	Elevation (ft)	Zone	Demand (gpm)	Hydraulic Grade (ft)	Pressure (psi)
J-65	6,663.3	<None>	0.00	6,985.8	139.5
J-64	6,665.9	<None>	2.19	6,985.8	138.4
J-61	6,670.4	<None>	0.00	6,985.8	136.4
J-66	6,671.2	<None>	2.19	6,985.8	136.1
J-204	6,673.1	<None>	2.19	6,985.8	135.3
J-203	6,677.4	<None>	3.28	6,985.8	133.4
J-209	6,685.2	<None>	0.00	6,989.6	131.7
J-210	6,684.8	<None>	0.00	6,987.9	131.1
J-215	6,687.2	<None>	2.19	6,990.1	131.1
J-216	6,692.4	<None>	2.19	6,990.6	129.0
J-45	6,694.6	<None>	3.28	6,992.4	128.8
J-56	6,688.6	<None>	0.00	6,985.8	128.6
J-202	6,688.6	<None>	2.19	6,985.7	128.5
J-67	6,690.0	<None>	0.00	6,985.8	128.0
J-44	6,696.3	<None>	4.38	6,991.2	127.6
J-43	6,695.9	<None>	0.00	6,989.9	127.2
J-42	6,697.7	<None>	2.19	6,990.7	126.8
J-217	6,698.9	<None>	1.09	6,991.8	126.7
J-218	6,700.9	<None>	4.38	6,993.1	126.4
J-4	6,713.7	<None>	2.19	7,004.4	125.8
J-38	6,702.3	<None>	0.00	6,991.7	125.2
J-48	6,706.3	<None>	2.19	6,993.8	124.4
J-208	6,706.0	<None>	4.38	6,991.4	123.5
J-50	6,710.8	<None>	4.38	6,994.6	122.8
J-68	6,702.3	<None>	3.28	6,985.8	122.6
J-201	6,701.3	<None>	3.28	6,984.4	122.5
J-9	6,721.6	<None>	0.00	7,002.8	121.7
J-54	6,715.4	<None>	3.28	6,996.6	121.7
J-10	6,721.6	<None>	2.19	7,002.7	121.6
J-35	6,713.0	<None>	6.57	6,991.0	120.3
J-120	6,719.2	<None>	3.28	6,994.6	119.2
J-11	6,727.2	<None>	2.19	7,001.5	118.7
J-32	6,717.3	<None>	0.00	6,990.7	118.3
J-31	6,717.3	<None>	0.00	6,990.7	118.3
J-69	6,710.4	<None>	0.00	6,983.2	118.0
J-198	6,711.6	<None>	3.28	6,983.1	117.5



Label	Elevation (ft)	Zone	Demand (gpm)	Hydraulic Grade (ft)	Pressure (psi)
J-207	6,719.3	<None>	4.38	6,990.5	117.3
J-221	6,736.5	<None>	3.28	7,006.3	116.7
J-116	6,726.8	<None>	6.57	6,994.6	115.9
J-118	6,727.0	<None>	0.00	6,994.6	115.8
J-117	6,727.0	<None>	0.00	6,994.6	115.8
J-14	6,737.8	<None>	3.28	7,001.8	114.2
J-30	6,726.1	<None>	3.28	6,990.0	114.2
J-238	6,717.8	<None>	3.28	6,981.3	114.0
J-112	6,732.3	<None>	5.47	6,994.4	113.4
J-230	6,733.4	<None>	0.00	6,994.6	113.0
J-231	6,738.5	<None>	0.00	6,997.9	112.2
J-29	6,731.1	<None>	2.19	6,989.7	111.9
J-73	6,719.6	<None>	3.28	6,978.1	111.9
J-70	6,722.7	<None>	0.00	6,980.6	111.6
J-197	6,723.1	<None>	3.28	6,980.4	111.3
J-100	6,717.5	<None>	2.19	6,974.4	111.2
J-76	6,727.2	<None>	3.28	6,983.2	110.8
J-179	6,717.9	<None>	2.19	6,972.8	110.3
J-27	6,734.7	<None>	2.19	6,989.5	110.2
J-236	6,719.1	<None>	2.19	6,972.1	109.5
J-191	6,719.9	<None>	2.19	6,972.9	109.5
J-97	6,722.5	<None>	2.19	6,975.2	109.3
J-196	6,726.3	<None>	2.19	6,979.0	109.3
J-77	6,723.7	<None>	3.28	6,975.8	109.1
J-94	6,723.0	<None>	0.00	6,974.4	108.8
J-128	6,721.8	<None>	0.00	6,972.8	108.6
J-93	6,723.7	<None>	2.19	6,974.3	108.4
J-25	6,739.2	<None>	0.00	6,989.2	108.2
J-26	6,739.4	<None>	3.28	6,989.3	108.1
J-195	6,728.5	<None>	2.19	6,978.1	108.0
J-72	6,726.3	<None>	2.19	6,975.8	108.0
J-109	6,743.4	<None>	4.38	6,992.7	107.8
J-129	6,723.2	<None>	2.19	6,972.2	107.7
J-219	6,751.8	<None>	2.19	7,000.2	107.5
J-1	6,750.4	<None>	2.19	6,998.7	107.4
J-176	6,724.4	<None>	1.09	6,972.7	107.4

Label	Elevation (ft)	Zone	Demand (gpm)	Hydraulic Grade (ft)	Pressure (psi)
J-126	6,726.0	<None>	0.00	6,974.3	107.4
J-232	6,750.5	<None>	0.00	6,998.7	107.4
J-127	6,726.0	<None>	0.00	6,974.2	107.4
J-185	6,724.0	<None>	2.19	6,972.1	107.3
J-71	6,730.2	<None>	0.00	6,978.1	107.3
J-125	6,727.2	<None>	4.38	6,974.4	106.9
J-2	6,755.7	<None>	3.28	7,002.0	106.6
J-90	6,727.7	<None>	2.19	6,973.6	106.4
J-190	6,726.9	<None>	2.19	6,972.6	106.3
J-3	6,762.4	<None>	4.38	7,008.0	106.3
J-130	6,727.6	<None>	1.09	6,972.1	105.8
J-220	6,761.4	<None>	2.19	7,004.8	105.3
J-214	6,729.7	<None>	1.09	6,973.0	105.2
J-22	6,744.9	<None>	2.19	6,987.4	104.9
J-105	6,749.6	<None>	2.19	6,991.1	104.5
J-133	6,730.4	<None>	1.09	6,971.8	104.5
J-85	6,732.2	<None>	0.00	6,973.0	104.2
J-84	6,732.2	<None>	0.00	6,973.0	104.2
J-162	6,732.2	<None>	0.00	6,973.0	104.2
J-194	6,735.7	<None>	2.19	6,976.4	104.1
J-167	6,731.9	<None>	3.28	6,972.4	104.1
J-75	6,740.5	<None>	2.19	6,980.6	103.9
J-80	6,733.7	<None>	3.28	6,973.0	103.5
J-134	6,733.2	<None>	2.19	6,971.4	103.0
J-74	6,740.5	<None>	3.28	6,978.1	102.8
J-19	6,749.4	<None>	0.00	6,985.1	102.0
J-180	6,736.4	<None>	1.09	6,971.4	101.7
J-206	6,751.1	<None>	1.09	6,985.1	101.3
J-239	6,750.1	<None>	3.28	6,983.3	100.9
J-20	6,752.0	<None>	2.19	6,985.1	100.9
J-170	6,740.9	<None>	2.19	6,972.4	100.2
J-135	6,743.4	<None>	4.38	6,970.9	98.4
J-161	6,744.4	<None>	2.19	6,970.9	98.0
J-227	6,744.4	<None>	0.00	6,970.9	98.0
J-187	6,746.2	<None>	1.09	6,969.9	96.8
J-18	6,757.8	<None>	2.19	6,980.9	96.5

Label	Elevation (ft)	Zone	Demand (gpm)	Hydraulic Grade (ft)	Pressure (psi)
J-233	6,756.3	<None>	0.00	6,977.9	95.9
J-136	6,748.4	<None>	3.28	6,969.0	95.4
J-160	6,750.7	<None>	1.09	6,969.0	94.4
J-140	6,752.4	<None>	0.00	6,968.1	93.3
J-229	6,756.0	<None>	2.19	6,968.4	91.9
J-155	6,756.6	<None>	3.28	6,968.6	91.7
J-141	6,756.3	<None>	2.19	6,966.4	90.9
J-157	6,764.7	<None>	2.19	6,971.7	89.6
J-234	6,768.9	<None>	0.00	6,974.9	89.1
J-159	6,770.1	<None>	5.47	6,974.9	88.6
J-144	6,762.2	<None>	0.00	6,964.6	87.6
J-145	6,762.2	<None>	0.00	6,963.5	87.1
J-147	6,763.6	<None>	2.19	6,957.1	83.7
J-149	6,767.3	<None>	0.00	6,957.1	82.1
J-153	6,769.5	<None>	2.19	6,943.4	75.3
J-154	6,774.9	<None>	2.19	6,921.3	63.4
J-225	6,774.9	<None>	0.00	6,921.3	63.4

Label	Length (ft)	Diameter (in)	Is Open?	Hazen-Williams C	Flow (Absolute) (gpm)	Velocity (Maximum) (ft/s)	Headloss (ft)
P-255	33	6.0	True	130.0	1,500.00	17.02	23.70
P-252	491	8.0	True	120.0	1,502.19	9.59	22.10
P-153	304	8.0	True	120.0	1,504.38	9.60	13.70
P-149	140	8.0	True	120.0	1,506.57	9.62	6.33
P-55	993	12.0	True	123.0	1,356.45	3.85	4.90
P-274	1,028	8.0	True	120.0	361.35	2.31	3.31
P-248	522	8.0	True	120.0	513.58	3.28	3.22
P-279	519	8.0	True	120.0	509.36	3.25	3.15
P-159	517	8.0	True	120.0	507.17	3.24	3.12
P-281	493	8.0	True	120.0	514.84	3.29	3.05
P-278	479	8.0	True	120.0	514.84	3.29	2.97
P-49	903	12.0	True	123.0	1,079.11	3.06	2.92
P-247	451	8.0	True	120.0	511.39	3.26	2.76
P-286	379	8.0	True	120.0	517.03	3.30	2.37
P-20	358	8.0	True	120.0	523.60	3.34	2.29
P-229	614	12.0	True	123.0	1,114.31	3.16	2.11
P-264	257	12.0	True	123.0	1,745.16	4.95	2.02
P-53	403	12.0	True	123.0	1,353.16	3.84	1.98
P-250	467	12.0	True	123.0	1,223.92	3.47	1.91
P-107	572	8.0	True	120.0	366.53	2.34	1.89
P-287	293	8.0	True	120.0	520.31	3.32	1.85
P-245	559	8.0	True	120.0	365.73	2.33	1.84
P-284	555	12.0	True	123.0	1,089.14	3.09	1.82
P-23	280	8.0	True	120.0	525.79	3.36	1.80
P-199	557	12.0	True	123.0	1,069.44	3.03	1.77
P-227	515	12.0	True	123.0	1,114.31	3.16	1.77
P-114	514	8.0	True	120.0	373.09	2.38	1.76
P-145	293	12.0	True	123.0	1,506.57	4.27	1.75
P-144	282	12.0	True	123.0	1,508.76	4.28	1.70
P-249	407	12.0	True	123.0	1,227.21	3.48	1.67
P-4	387	12.0	True	123.0	1,221.74	3.47	1.58
P-111	463	8.0	True	120.0	368.72	2.35	1.54
P-172	765	12.0	True	123.0	818.25	2.32	1.48
P-126	577	8.0	True	120.0	317.10	2.02	1.46
P-275	437	8.0	True	120.0	363.54	2.32	1.42
P-206	427	12.0	True	123.0	1,080.38	3.06	1.38

Label	Length (ft)	Diameter (in)	Is Open?	Hazen-Williams C	Flow (Absolute) (gpm)	Velocity (Maximum) (ft/s)	Headloss (ft)
P-212	376	12.0	True	123.0	1,098.99	3.12	1.26
P-197	510	8.0	True	120.0	312.73	2.00	1.25
P-10	302	12.0	True	123.0	1,219.55	3.46	1.22
P-210	362	12.0	True	123.0	1,095.70	3.11	1.21
P-148	26	8.0	True	120.0	1,506.57	9.62	1.17
P-193	352	12.0	True	123.0	1,012.53	2.87	1.01
P-37	428	12.0	True	123.0	893.59	2.53	0.98
P-194	335	12.0	True	123.0	1,011.43	2.87	0.96
P-140	313	12.0	True	123.0	1,007.05	2.86	0.89
P-204	274	12.0	True	123.0	1,078.19	3.06	0.88
P-277	265	8.0	True	120.0	361.35	2.31	0.85
P-41	354	12.0	True	123.0	891.40	2.53	0.80
P-48	504	8.0	True	120.0	242.61	1.55	0.77
P-243	524	8.0	True	120.0	236.04	1.51	0.77
P-98	471	12.0	True	123.0	742.48	2.11	0.76
P-46	473	8.0	True	120.0	240.42	1.53	0.72
P-92	437	12.0	True	123.0	738.10	2.09	0.70
P-285	210	12.0	True	123.0	1,085.85	3.08	0.69
P-240	485	8.0	True	120.0	227.29	1.45	0.66
P-87	410	12.0	True	123.0	735.92	2.09	0.65
P-99	371	12.0	True	123.0	744.67	2.11	0.60
P-241	423	8.0	True	120.0	231.66	1.48	0.60
P-132	490	8.0	True	120.0	212.88	1.36	0.59
P-200	177	12.0	True	123.0	1,067.25	3.03	0.56
P-242	371	8.0	True	120.0	232.76	1.49	0.53
P-167	335	12.0	True	123.0	731.54	2.08	0.53
P-223	528	8.0	True	120.0	181.15	1.16	0.47
P-137	410	8.0	True	120.0	204.13	1.30	0.46
P-239	327	8.0	True	120.0	225.10	1.44	0.44
P-138	388	8.0	True	120.0	200.85	1.28	0.42
P-221	519	8.0	True	120.0	170.20	1.09	0.41
P-28	409	8.0	True	120.0	166.92	1.07	0.32
P-33	337	8.0	True	120.0	174.58	1.11	0.28
P-225	81	12.0	True	123.0	1,114.31	3.16	0.28
P-27	366	8.0	True	120.0	164.73	1.05	0.27
P-262	333	12.0	True	120.0	501.70	1.42	0.27

Label	Length (ft)	Diameter (in)	Is Open?	Hazen-Williams C	Flow (Absolute) (gpm)	Velocity (Maximum) (ft/s)	Headloss (ft)
P-263	330	12.0	True	120.0	503.89	1.43	0.27
P-134	242	8.0	True	120.0	205.22	1.31	0.27
P-11	486	8.0	True	120.0	139.09	0.89	0.27
P-224	282	8.0	True	120.0	185.52	1.18	0.26
P-17	413	8.0	True	120.0	142.37	0.91	0.24
P-237	168	8.0	True	120.0	222.91	1.42	0.22
P-222	233	8.0	True	120.0	174.58	1.11	0.19
P-205	56	12.0	True	123.0	1,083.66	3.07	0.18
P-272	49	8.0	True	120.0	378.57	2.42	0.17
P-198	59	8.0	True	120.0	310.54	1.98	0.14
P-25	188	8.0	True	120.0	162.54	1.04	0.14
P-196	484	8.0	True	120.0	94.37	0.60	0.13
P-176	499	8.0	True	120.0	92.18	0.59	0.13
P-95	69	12.0	True	123.0	740.29	2.10	0.11
P-182	395	8.0	True	120.0	95.46	0.61	0.11
P-9	26	12.0	True	123.0	1,221.74	3.47	0.11
P-133	88	8.0	True	120.0	210.70	1.34	0.10
P-129	41	8.0	True	120.0	312.73	2.00	0.10
P-211	29	12.0	True	123.0	1,101.18	3.12	0.10
P-24	127	8.0	True	120.0	159.26	1.02	0.09
P-207	27	12.0	True	123.0	1,092.42	3.10	0.09
P-130	25	8.0	True	120.0	312.73	2.00	0.06
P-166	17	12.0	True	123.0	735.92	2.09	0.03
P-30	25	8.0	True	120.0	174.58	1.11	0.02
P-125	479	8.0	True	120.0	27.06	0.17	0.01
P-122	284	8.0	True	120.0	23.78	0.15	0.01
P-273	363	8.0	True	120.0	17.21	0.11	0.00
P-119	150	8.0	True	120.0	23.78	0.15	0.00
P-187	492	8.0	True	120.0	4.38	0.03	0.00
P-215	241	8.0	True	120.0	6.57	0.04	0.00
P-120	27	8.0	True	120.0	23.78	0.15	0.00
P-82	376	8.0	True	120.0	4.38	0.03	0.00
P-77	350	8.0	True	120.0	3.28	0.02	0.00
P-202	315	8.0	True	120.0	3.28	0.02	0.00
P-69	342	8.0	True	120.0	3.28	0.02	0.00
P-78	381	8.0	True	120.0	3.28	0.02	0.00

Label	Length (ft)	Diameter (in)	Is Open?	Hazen-Williams C	Flow (Absolute) (gpm)	Velocity (Maximum) (ft/s)	Headloss (ft)
P-283	1,332	8.0	True	120.0	2.19	0.01	0.00
P-76	834	8.0	True	120.0	2.19	0.01	0.00
P-68	479	12.0	True	123.0	9.85	0.03	0.00
P-64	225	8.0	True	120.0	2.19	0.01	0.00
P-65	169	8.0	True	120.0	0.00	0.00	0.00
P-66	324	8.0	True	120.0	2.19	0.01	0.00
P-67	37	12.0	True	123.0	13.13	0.04	0.00
P-74	238	8.0	True	120.0	3.28	0.02	0.00
P-100	356	8.0	True	120.0	2.19	0.01	0.00
P-151	177	8.0	True	120.0	0.00	0.00	0.00
P-163	376	8.0	True	120.0	1.09	0.01	0.00
P-165	17	12.0	True	123.0	4.38	0.01	0.00
P-175	228	8.0	True	120.0	2.19	0.01	0.00
P-185	292	8.0	True	120.0	2.19	0.01	0.00
P-186	376	8.0	True	120.0	1.09	0.01	0.00
P-201	57	8.0	True	120.0	5.47	0.03	0.00
P-216	200	8.0	True	120.0	4.38	0.03	0.00
P-219	79	8.0	True	120.0	3.28	0.02	0.00
P-220	431	8.0	True	120.0	2.19	0.01	0.00
P-236	420	8.0	True	120.0	1.09	0.01	0.00
P-253	22	8.0	True	120.0	2.19	0.01	0.00
P-256	60	6.0	True	130.0	0.00	0.00	0.00
P-257	60	6.0	True	130.0	0.01	0.00	0.00
P-258	52	6.0	True	130.0	0.00	0.00	0.00
P-259	677	8.0	True	120.0	2.19	0.01	0.00
P-260	28	8.0	True	120.0	2.19	0.01	0.00
P-261	38	6.0	True	130.0	0.00	0.00	0.00
P-276	42	8.0	True	120.0	2.19	0.01	0.00
P-280	28	8.0	True	120.0	5.47	0.03	0.00

Label	Elevation (ft)	Zone	Demand (gpm)	Hydraulic Grade (ft)	Pressure (psi)
J-65	6,663.3	<None>	0.00	6,988.0	140.5
J-64	6,665.9	<None>	2.19	6,988.0	139.4
J-61	6,670.4	<None>	0.00	6,988.0	137.4
J-66	6,671.2	<None>	2.19	6,988.0	137.1
J-204	6,673.1	<None>	2.19	6,988.0	136.2
J-203	6,677.4	<None>	3.28	6,988.0	134.4
J-209	6,685.2	<None>	0.00	6,990.7	132.2
J-210	6,684.8	<None>	0.00	6,989.5	131.8
J-215	6,687.2	<None>	2.19	6,991.1	131.5
J-56	6,688.6	<None>	0.00	6,988.0	129.5
J-202	6,688.6	<None>	2.19	6,987.9	129.5
J-216	6,692.4	<None>	2.19	6,991.4	129.4
J-45	6,694.6	<None>	3.28	6,992.9	129.0
J-67	6,690.0	<None>	0.00	6,988.0	128.9
J-44	6,696.3	<None>	4.38	6,992.0	127.9
J-43	6,695.9	<None>	0.00	6,990.9	127.6
J-42	6,697.7	<None>	2.19	6,991.4	127.1
J-217	6,698.9	<None>	1.09	6,992.4	127.0
J-218	6,700.9	<None>	4.38	6,993.5	126.6
J-4	6,713.7	<None>	2.19	7,004.4	125.8
J-38	6,702.3	<None>	0.00	6,992.1	125.4
J-48	6,706.3	<None>	2.19	6,994.1	124.5
J-201	6,701.3	<None>	3.28	6,987.1	123.6
J-68	6,702.3	<None>	3.28	6,988.0	123.6
J-208	6,706.0	<None>	4.38	6,991.5	123.5
J-50	6,710.8	<None>	4.38	6,994.7	122.8
J-54	6,715.4	<None>	3.28	6,996.7	121.7
J-9	6,721.6	<None>	0.00	7,002.8	121.7
J-10	6,721.6	<None>	2.19	7,002.7	121.6
J-35	6,713.0	<None>	6.57	6,990.4	120.0
J-69	6,710.4	<None>	0.00	6,986.2	119.3
J-120	6,719.2	<None>	3.28	6,994.5	119.1
J-198	6,711.6	<None>	3.28	6,986.2	118.8
J-11	6,727.2	<None>	2.19	7,001.5	118.7
J-32	6,717.3	<None>	0.00	6,989.7	117.9
J-31	6,717.3	<None>	0.00	6,989.7	117.8



Label	Elevation (ft)	Zone	Demand (gpm)	Hydraulic Grade (ft)	Pressure (psi)
J-207	6,719.3	<None>	4.38	6,989.2	116.8
J-221	6,736.5	<None>	3.28	7,006.3	116.7
J-116	6,726.8	<None>	6.57	6,994.4	115.8
J-118	6,727.0	<None>	0.00	6,994.4	115.7
J-117	6,727.0	<None>	0.00	6,994.4	115.7
J-238	6,717.8	<None>	3.28	6,984.9	115.5
J-14	6,737.8	<None>	3.28	7,001.8	114.2
J-73	6,719.6	<None>	3.28	6,982.7	113.8
J-100	6,717.5	<None>	2.19	6,980.2	113.7
J-30	6,726.1	<None>	3.28	6,988.2	113.4
J-70	6,722.7	<None>	0.00	6,984.4	113.2
J-112	6,732.3	<None>	5.47	6,994.0	113.2
J-197	6,723.1	<None>	3.28	6,984.3	113.0
J-179	6,717.9	<None>	2.19	6,979.1	113.0
J-230	6,733.4	<None>	0.00	6,994.3	112.9
J-236	6,719.1	<None>	2.19	6,978.6	112.3
J-191	6,719.9	<None>	2.19	6,979.2	112.2
J-231	6,738.5	<None>	0.00	6,997.7	112.1
J-76	6,727.2	<None>	3.28	6,986.2	112.1
J-97	6,722.5	<None>	2.19	6,980.7	111.7
J-77	6,723.7	<None>	3.28	6,981.1	111.4
J-128	6,721.8	<None>	0.00	6,979.1	111.3
J-94	6,723.0	<None>	0.00	6,980.2	111.3
J-196	6,726.3	<None>	2.19	6,983.3	111.2
J-93	6,723.7	<None>	2.19	6,980.1	110.9
J-29	6,731.1	<None>	2.19	6,987.4	110.9
J-129	6,723.2	<None>	2.19	6,978.7	110.5
J-72	6,726.3	<None>	2.19	6,981.1	110.3
J-176	6,724.4	<None>	1.09	6,979.0	110.1
J-185	6,724.0	<None>	2.19	6,978.6	110.1
J-195	6,728.5	<None>	2.19	6,982.7	110.0
J-126	6,726.0	<None>	0.00	6,980.1	109.9
J-127	6,726.0	<None>	0.00	6,980.0	109.9
J-125	6,727.2	<None>	4.38	6,980.1	109.4
J-71	6,730.2	<None>	0.00	6,982.7	109.3
J-27	6,734.7	<None>	2.19	6,986.8	109.1

Label	Elevation (ft)	Zone	Demand (gpm)	Hydraulic Grade (ft)	Pressure (psi)
J-190	6,726.9	<None>	2.19	6,978.9	109.0
J-90	6,727.7	<None>	2.19	6,979.6	109.0
J-130	6,727.6	<None>	1.09	6,978.6	108.6
J-214	6,729.7	<None>	1.09	6,979.2	107.9
J-219	6,751.8	<None>	2.19	7,000.1	107.4
J-1	6,750.4	<None>	2.19	6,998.6	107.4
J-232	6,750.5	<None>	0.00	6,998.6	107.3
J-133	6,730.4	<None>	1.09	6,978.4	107.3
J-109	6,743.4	<None>	4.38	6,991.4	107.3
J-26	6,739.4	<None>	3.28	6,986.4	106.9
J-85	6,732.2	<None>	0.00	6,979.2	106.9
J-25	6,739.2	<None>	0.00	6,986.2	106.9
J-84	6,732.2	<None>	0.00	6,979.2	106.9
J-162	6,732.2	<None>	0.00	6,979.2	106.9
J-167	6,731.9	<None>	3.28	6,978.8	106.8
J-2	6,755.7	<None>	3.28	7,002.0	106.5
J-194	6,735.7	<None>	2.19	6,981.5	106.3
J-3	6,762.4	<None>	4.38	7,008.0	106.3
J-80	6,733.7	<None>	3.28	6,979.2	106.2
J-134	6,733.2	<None>	2.19	6,978.1	106.0
J-75	6,740.5	<None>	2.19	6,984.4	105.5
J-220	6,761.4	<None>	2.19	7,004.7	105.3
J-74	6,740.5	<None>	3.28	6,982.7	104.8
J-180	6,736.4	<None>	1.09	6,978.1	104.6
J-105	6,749.6	<None>	2.19	6,989.0	103.6
J-22	6,744.9	<None>	2.19	6,982.9	103.0
J-170	6,740.9	<None>	2.19	6,978.8	102.9
J-135	6,743.4	<None>	4.38	6,977.8	101.4
J-161	6,744.4	<None>	2.19	6,977.8	101.0
J-227	6,744.4	<None>	0.00	6,977.8	101.0
J-187	6,746.2	<None>	1.09	6,977.1	99.9
J-19	6,749.4	<None>	0.00	6,978.8	99.3
J-136	6,748.4	<None>	3.28	6,976.5	98.7
J-206	6,751.1	<None>	1.09	6,978.8	98.5
J-20	6,752.0	<None>	2.19	6,978.8	98.1
J-160	6,750.7	<None>	1.09	6,976.5	97.7

Label	Elevation (ft)	Zone	Demand (gpm)	Hydraulic Grade (ft)	Pressure (psi)
J-239	6,750.1	<None>	3.28	6,975.5	97.5
J-140	6,752.4	<None>	0.00	6,975.9	96.7
J-141	6,756.3	<None>	2.19	6,975.9	95.0
J-229	6,756.0	<None>	2.19	6,975.2	94.9
J-155	6,756.6	<None>	3.28	6,974.6	94.3
J-144	6,762.2	<None>	0.00	6,975.9	92.5
J-145	6,762.2	<None>	0.00	6,975.9	92.5
J-18	6,757.8	<None>	2.19	6,971.2	92.3
J-147	6,763.6	<None>	2.19	6,975.9	91.8
J-233	6,756.3	<None>	0.00	6,965.8	90.6
J-149	6,767.3	<None>	0.00	6,975.9	90.2
J-153	6,769.5	<None>	2.19	6,975.9	89.3
J-157	6,764.7	<None>	2.19	6,967.4	87.7
J-154	6,774.9	<None>	2.19	6,975.9	87.0
J-225	6,774.9	<None>	0.00	6,975.9	87.0
J-234	6,768.9	<None>	0.00	6,960.2	82.8
J-159	6,770.1	<None>	5.47	6,959.0	81.7

Label	Length (ft)	Diameter (in)	Is Open?	Hazen-Williams C	Flow (Absolute) (gpm)	Velocity (Maximum) (ft/s)	Headloss (ft)
P-256	60	6.0	True	130.0	1,500.00	17.02	9.44
P-159	517	8.0	True	120.0	796.76	5.09	7.19
P-279	519	8.0	True	120.0	794.57	5.07	7.18
P-281	493	8.0	True	120.0	710.90	4.54	5.55
P-278	479	8.0	True	120.0	710.90	4.54	5.39
P-55	993	12.0	True	123.0	1,348.63	3.83	4.85
P-286	379	8.0	True	120.0	713.09	4.55	4.30
P-20	358	8.0	True	120.0	719.66	4.59	4.12
P-274	1,028	8.0	True	120.0	369.17	2.36	3.44
P-287	293	8.0	True	120.0	716.37	4.57	3.35
P-23	280	8.0	True	120.0	721.85	4.61	3.24
P-248	522	8.0	True	120.0	514.91	3.29	3.23
P-107	572	8.0	True	120.0	458.17	2.92	2.85
P-247	451	8.0	True	120.0	512.73	3.27	2.77
P-114	514	8.0	True	120.0	464.74	2.97	2.64
P-49	903	12.0	True	123.0	1,012.87	2.87	2.60
P-111	463	8.0	True	120.0	460.36	2.94	2.33
P-264	257	12.0	True	123.0	1,745.16	4.95	2.02
P-53	403	12.0	True	123.0	1,345.35	3.82	1.96
P-245	559	8.0	True	120.0	373.54	2.38	1.91
P-250	467	12.0	True	123.0	1,222.58	3.47	1.90
P-249	407	12.0	True	123.0	1,225.86	3.48	1.67
P-4	387	12.0	True	123.0	1,220.39	3.46	1.57
P-275	437	8.0	True	120.0	371.35	2.37	1.48
P-229	614	12.0	True	123.0	918.24	2.60	1.47
P-284	555	12.0	True	123.0	893.07	2.53	1.26
P-280	28	8.0	True	120.0	1,505.47	9.61	1.25
P-227	515	12.0	True	123.0	918.24	2.60	1.24
P-10	302	12.0	True	123.0	1,218.20	3.46	1.22
P-199	557	12.0	True	123.0	873.37	2.48	1.22
P-223	528	8.0	True	120.0	285.56	1.82	1.10
P-221	519	8.0	True	120.0	274.62	1.75	1.00
P-126	577	8.0	True	120.0	258.83	1.65	1.00
P-172	765	12.0	True	123.0	661.92	1.88	1.00
P-206	427	12.0	True	123.0	884.32	2.51	0.95
P-277	265	8.0	True	120.0	369.17	2.36	0.89

Label	Length (ft)	Diameter (in)	Is Open?	Hazen-Williams C	Flow (Absolute) (gpm)	Velocity (Maximum) (ft/s)	Headloss (ft)
P-212	376	12.0	True	123.0	902.92	2.56	0.87
P-197	510	8.0	True	120.0	254.45	1.62	0.86
P-210	362	12.0	True	123.0	899.64	2.55	0.84
P-28	409	8.0	True	120.0	271.34	1.73	0.77
P-27	366	8.0	True	120.0	269.15	1.72	0.68
P-193	352	12.0	True	123.0	816.46	2.32	0.68
P-33	337	8.0	True	120.0	279.00	1.78	0.67
P-37	428	12.0	True	123.0	722.93	2.05	0.66
P-262	333	12.0	True	120.0	802.23	2.28	0.65
P-194	335	12.0	True	123.0	815.37	2.31	0.64
P-263	330	12.0	True	120.0	800.04	2.27	0.64
P-48	504	8.0	True	120.0	217.20	1.39	0.63
P-243	524	8.0	True	120.0	210.64	1.34	0.62
P-204	274	12.0	True	123.0	882.13	2.50	0.61
P-224	282	8.0	True	120.0	289.94	1.85	0.60
P-140	313	12.0	True	123.0	810.99	2.30	0.60
P-46	473	8.0	True	120.0	215.02	1.37	0.58
P-41	354	12.0	True	123.0	720.74	2.04	0.54
P-240	485	8.0	True	120.0	201.88	1.29	0.53
P-98	471	12.0	True	123.0	604.69	1.72	0.52
P-241	423	8.0	True	120.0	206.26	1.32	0.48
P-92	437	12.0	True	123.0	600.32	1.70	0.48
P-285	210	12.0	True	123.0	889.79	2.52	0.48
P-222	233	8.0	True	120.0	279.00	1.78	0.46
P-87	410	12.0	True	123.0	598.13	1.70	0.44
P-242	371	8.0	True	120.0	207.35	1.32	0.43
P-99	371	12.0	True	123.0	606.88	1.72	0.41
P-132	490	8.0	True	120.0	173.15	1.11	0.40
P-200	177	12.0	True	123.0	871.18	2.47	0.39
P-167	335	12.0	True	123.0	593.75	1.68	0.36
P-239	327	8.0	True	120.0	199.69	1.27	0.35
P-25	188	8.0	True	120.0	266.96	1.70	0.35
P-137	410	8.0	True	120.0	164.39	1.05	0.31
P-138	388	8.0	True	120.0	161.11	1.03	0.28
P-272	49	8.0	True	120.0	470.21	3.00	0.26
P-11	486	8.0	True	120.0	132.62	0.85	0.24

Label	Length (ft)	Diameter (in)	Is Open?	Hazen-Williams C	Flow (Absolute) (gpm)	Velocity (Maximum) (ft/s)	Headloss (ft)
P-24	127	8.0	True	120.0	263.67	1.68	0.23
P-17	413	8.0	True	120.0	135.90	0.87	0.22
P-225	81	12.0	True	123.0	918.24	2.60	0.20
P-134	242	8.0	True	120.0	165.49	1.06	0.18
P-237	168	8.0	True	120.0	197.50	1.26	0.18
P-125	479	8.0	True	120.0	110.90	0.71	0.17
P-205	56	12.0	True	123.0	887.60	2.52	0.13
P-273	363	8.0	True	120.0	101.05	0.64	0.11
P-9	26	12.0	True	123.0	1,220.39	3.46	0.11
P-198	59	8.0	True	120.0	252.26	1.61	0.10
P-122	284	8.0	True	120.0	107.61	0.69	0.10
P-196	484	8.0	True	120.0	75.83	0.48	0.09
P-176	499	8.0	True	120.0	73.64	0.47	0.08
P-95	69	12.0	True	123.0	602.51	1.71	0.08
P-182	395	8.0	True	120.0	76.92	0.49	0.07
P-133	88	8.0	True	120.0	170.96	1.09	0.07
P-129	41	8.0	True	120.0	254.45	1.62	0.07
P-211	29	12.0	True	123.0	905.11	2.57	0.07
P-207	27	12.0	True	123.0	896.35	2.54	0.06
P-119	150	8.0	True	120.0	107.61	0.69	0.05
P-30	25	8.0	True	120.0	279.00	1.78	0.05
P-130	25	8.0	True	120.0	254.45	1.62	0.04
P-166	17	12.0	True	123.0	598.13	1.70	0.02
P-120	27	8.0	True	120.0	107.61	0.69	0.01
P-187	492	8.0	True	120.0	4.38	0.03	0.00
P-153	304	8.0	True	120.0	4.38	0.03	0.00
P-215	241	8.0	True	120.0	6.57	0.04	0.00
P-82	376	8.0	True	120.0	4.38	0.03	0.00
P-144	282	12.0	True	123.0	8.76	0.02	0.00
P-69	342	8.0	True	120.0	3.28	0.02	0.00
P-78	381	8.0	True	120.0	3.28	0.02	0.00
P-283	1,332	8.0	True	120.0	2.19	0.01	0.00
P-68	479	12.0	True	123.0	9.85	0.03	0.00
P-64	225	8.0	True	120.0	2.19	0.01	0.00
P-65	169	8.0	True	120.0	0.00	0.00	0.00
P-66	324	8.0	True	120.0	2.19	0.01	0.00

Label	Length (ft)	Diameter (in)	Is Open?	Hazen-Williams C	Flow (Absolute) (gpm)	Velocity (Maximum) (ft/s)	Headloss (ft)
P-67	37	12.0	True	123.0	13.13	0.04	0.00
P-74	238	8.0	True	120.0	3.28	0.02	0.00
P-76	834	8.0	True	120.0	2.19	0.01	0.00
P-77	350	8.0	True	120.0	3.28	0.02	0.00
P-100	356	8.0	True	120.0	2.19	0.01	0.00
P-145	293	12.0	True	123.0	6.57	0.02	0.00
P-148	26	8.0	True	120.0	6.57	0.04	0.00
P-149	140	8.0	True	120.0	6.57	0.04	0.00
P-151	177	8.0	True	120.0	0.00	0.00	0.00
P-163	376	8.0	True	120.0	1.09	0.01	0.00
P-165	17	12.0	True	123.0	4.38	0.01	0.00
P-175	228	8.0	True	120.0	2.19	0.01	0.00
P-185	292	8.0	True	120.0	2.19	0.01	0.00
P-186	376	8.0	True	120.0	1.09	0.01	0.00
P-201	57	8.0	True	120.0	5.47	0.03	0.00
P-202	315	8.0	True	120.0	3.28	0.02	0.00
P-216	200	8.0	True	120.0	4.38	0.03	0.00
P-219	79	8.0	True	120.0	3.28	0.02	0.00
P-220	431	8.0	True	120.0	2.19	0.01	0.00
P-236	420	8.0	True	120.0	1.09	0.01	0.00
P-252	491	8.0	True	120.0	2.19	0.01	0.00
P-253	22	8.0	True	120.0	2.19	0.01	0.00
P-255	33	6.0	True	130.0	0.00	0.00	0.00
P-257	60	6.0	True	130.0	0.00	0.00	0.00
P-258	52	6.0	True	130.0	0.00	0.00	0.00
P-259	677	8.0	True	120.0	2.19	0.01	0.00
P-260	28	8.0	True	120.0	2.19	0.01	0.00
P-261	38	6.0	True	130.0	0.00	0.00	0.00
P-276	42	8.0	True	120.0	2.19	0.01	0.00

**Saddle Ranch Master Utility Report**  
**Water System Demands**

Junction	# Units Served	Average Day (GPD)	Average Day (GPM)	Max Day (GPD)	Max Day (GPM)
1	2	1,190	0.83	3,154	2.19
2	3	1,785	1.24	4,730	3.28
3	4	2,380	1.65	6,307	4.38
4	2	1,190	0.83	3,154	2.19
9	0	0	0.00	0	0.00
10	2	1,190	0.83	3,154	2.19
11	2	1,190	0.83	3,154	2.19
14	3	1,785	1.24	4,730	3.28
18	2	1,190	0.83	3,154	2.19
19	0	0	0.00	0	0.00
20	1	595	0.41	1,577	1.09
22	2	1,190	0.83	3,154	2.19
25	0	0	0.00	0	0.00
26	3	1,785	1.24	4,730	3.28
27	2	1,190	0.83	3,154	2.19
29	2	1,190	0.83	3,154	2.19
30	3	1,785	1.24	4,730	3.28
31	0	0	0.00	0	0.00
32	0	0	0.00	0	0.00
35	6	3,570	2.48	9,461	6.57
38	0	0	0.00	0	0.00
42	2	1,190	0.83	3,154	2.19
43	0	0	0.00	0	0.00
44	4	2,380	1.65	6,307	4.38
45	3	1,785	1.24	4,730	3.28
48	2	1,190	0.83	3,154	2.19
50	4	2,380	1.65	6,307	4.38
54	3	1,785	1.24	4,730	3.28
56	0	0	0.00	0	0.00
61	0	0	0.00	0	0.00
64	2	1,190	0.83	3,154	2.19
65	0	0	0.00	0	0.00
66	2	1,190	0.83	3,154	2.19
67	0	0	0.00	0	0.00
68	3	1,785	1.24	4,730	3.28
69	0	0	0.00	0	0.00
70	0	0	0.00	0	0.00
71	0	0	0.00	0	0.00
72	2	1,190	0.83	3,154	2.19
73	3	1,785	1.24	4,730	3.28
74	3	1,785	1.24	4,730	3.28
75	2	1,190	0.83	3,154	2.19
76	3	1,785	1.24	4,730	3.28
77	3	1,785	1.24	4,730	3.28
80	3	1,785	1.24	4,730	3.28
84	0	0	0.00	0	0.00
85	0	0	0.00	0	0.00
90	2	1,190	0.83	3,154	2.19
93	2	1,190	0.83	3,154	2.19
94	0	0	0.00	0	0.00
97	2	1,190	0.83	3,154	2.19



Junction	# Units Served	Average Day (GPD)	Average Day (GPM)	Max Day (GPD)	Max Day (GPM)
100	2	1,190	0.83	3,154	2.19
105	2	1,190	0.83	3,154	2.19
109	4	2,380	1.65	6,307	4.38
112	5	2,975	2.07	7,884	5.47
116	6	3,570	2.48	9,461	6.57
117	0	0	0.00	0	0.00
118	0	0	0.00	0	0.00
120	3	1,785	1.24	4,730	3.28
125	4	2,380	1.65	6,307	4.38
126	0	0	0.00	0	0.00
127	0	0	0.00	0	0.00
128	0	0	0.00	0	0.00
129	2	1,190	0.83	3,154	2.19
130	1	595	0.41	1,577	1.09
133	1	595	0.41	1,577	1.09
134	2	1,190	0.83	3,154	2.19
135	4	2,380	1.65	6,307	4.38
136	3	1,785	1.24	4,730	3.28
140	0	0	0.00	0	0.00
141	2	1,190	0.83	3,154	2.19
144	0	0	0.00	0	0.00
145	0	0	0.00	0	0.00
147	2	1,190	0.83	3,154	2.19
149	0	0	0.00	0	0.00
153	2	1,190	0.83	3,154	2.19
154	2	1,190	0.83	3,154	2.19
155	3	1,785	1.24	4,730	3.28
157	2	1,190	0.83	3,154	2.19
159	5	2,975	2.07	7,884	5.47
160	1	595	0.41	1,577	1.09
161	2	1,190	0.83	3,154	2.19
162	0	0	0.00	0	0.00
167	3	1,785	1.24	4,730	3.28
170	2	1,190	0.83	3,154	2.19
176	1	595	0.41	1,577	1.09
179	2	1,190	0.83	3,154	2.19
180	1	595	0.41	1,577	1.09
185	2	1,190	0.83	3,154	2.19
187	1	595	0.41	1,577	1.09
190	2	1,190	0.83	3,154	2.19
191	2	1,190	0.83	3,154	2.19
194	2	1,190	0.83	3,154	2.19
195	2	1,190	0.83	3,154	2.19
196	2	1,190	0.83	3,154	2.19
197	3	1,785	1.24	4,730	3.28
198	3	1,785	1.24	4,730	3.28
201	3	1,785	1.24	4,730	3.28
202	2	1,190	0.83	3,154	2.19
203	3	1,785	1.24	4,730	3.28
204	2	1,190	0.83	3,154	2.19
206	1	595	0.41	1,577	1.09
207	4	2,380	1.65	6,307	4.38
208	4	2,380	1.65	6,307	4.38
209	0	0	0.00	0	0.00

Junction	# Units Served	Average Day (GPD)	Average Day (GPM)	Max Day (GPD)	Max Day (GPM)
210	0	0	0.00	0	0.00
214	1	595	0.41	1,577	1.09
215	2	1,190	0.83	3,154	2.19
216	2	1,190	0.83	3,154	2.19
217	1	595	0.41	1,577	1.09
218	4	2,380	1.65	6,307	4.38
219	2	1,190	0.83	3,154	2.19
220	2	1,190	0.83	3,154	2.19
221	3	1,785	1.24	4,730	3.28
225	0	0	0.00	0	0.00
227	0	0	0.00	0	0.00
229	2	1,190	0.83	3,154	2.19
230	0	0	0.00	0	0.00
231	0	0	0.00	0	0.00
232	0	0	0.00	0	0.00
233	0	0	0.00	0	0.00
234	0	0	0.00	0	0.00
235	1	595	0.41	1,577	1.09
236	1	595	0.41	1,577	1.09
238	3	1,785	1.24	4,730	3.28
239	3	1,785	1.24	4,730	3.28
<b>Total</b>	223	132,685	92.14	351,615	244.18

**APPENDIX C**  
**REFERENCE MATERIAL**

# Hydraulic Analysis Report Modeling Criteria

## Junction Inputs

### Water Demands

Land use categories with typical densities and water demands are summarized in Tables 1 through 4.

Specific land use information with estimated dwelling units per acre should be use when available. If the number of dwelling units per acre is not known, the demand rate for different land uses should be calculated on a per acre basis.

Based on a mix of 60% Residential, 30% Commercial and 10% Parks, the water demand for raw land without specific land use, should be 1800/Gal/Day/Acre.

Table 1 - Residential Demand			
Classification	DU/Acre	Avg Gal/Day/Unit	Avg Gal/Day/Acre
Multi Family	6+	290	1800
Medium Residential	6+	290	1800
Low Residential	2 to 5	475	1700
Very Low Residential	<2	700	750

Note: Dwelling Units per acre are based on use of 60% of an acre being buildable.

**Table 2 - Commercial Demand**

Classification	Avg Gal/Day/Acre
Retail	1500
Restaurant	3900
Office	1900
Lodging	2500
Convenience Grocery Stores	6500
Car Wash	9000
Storage/Warehouse	1700
Fitness Club	2500
Office/Industrial Average	1800
Raw Land w/out Specific Land Use	1800

**Table 3 - School Demand**

School Type	Average Acres	Average Gal/Day/Acre
Elementary School	10	2000
Middle School	15	2000
High School	40	2000

Note – School usage will vary depending upon installation of sports fields. The above use numbers are based on sports fields being installed. However, each school will vary and a more accurate water demand can be determined when the number and type of sports fields are determined for the individual site.

**Table 4 - Parks/Recreational Demand**

Use Type	Average Gal/Day/Acre
Golf Course	2200
Neighborhood Park	2200
Community Park	2200
Trail	100
Open Space	100

Input average day demands to model junctions. Input demands in the model should be expressed in million gallons per day, mgd. Model output demands can be expressed as mgd, and/or gpm. Demands should be entered only at junctions on pipes 16" or smaller, and only where demands are expected. Demands are not added at junctions on pipes greater than 16" as these pipes are typically transmission lines. Do not add demands on hydrant nodes, unless it is at the end of a street or cul de sac.

To model max day demands, use the maximum day to average day (MD/AD) peaking factors as shown in Table 5, or as determined by Water Planning & Design and as specified on HGL Response Form. Peaking factors are pressure zone specific.

**Table 5 - Peaking Factors**

Pressure Zone	MD/AD
BRGT	2.65
TMPL	2.65
NFLD	2.50
HILN	2.20
LOLN	2.00

Note: From 2009 Finished Water Master Plan Update

## Junction Elevation

Use proposed ground surface elevation

For elevations at hydrants, add 2 feet to the hydrant flange elevation

## Pipe Inputs

### Diameter

For DIP and PVC, use nominal diameters, for HDPE DR 9, use inside diameters.

HDPE DR 9 Nominal diameter, (inches)	Inside Diameter, ID, (inches)
6	5.274
8	6.917
12	10.090
16	13.302
20	16.528
24	19.722

### Roughness

Nominal Pipe Diameter (inches)	Hazen- Williams Roughness Coefficients (C)
6	118
8	120
12	123
16	124
24	126
36, 42	128
54	130

### Minor Losses

Enter minor losses on hydrant laterals only. Use 4.1 on hydrant laterals.

### Pressure Requirements

- Maintain a minimum pressure of 60 psi under maximum day demands.
- Maintain a minimum pressure of 20 psi under maximum day demands plus fire flow.
- Pressure should not exceed 180 psi. To avoid pressures greater than 180 psi, PRV's may be required. When pressure exceeds 170 psi, DIP is required. Contact Water Planning and Design if pressures exceed 170 psi.

### Head Loss and Velocity Requirements

- Size pipelines for the worst-case scenario of maximum day demand conditions plus fire flow.
- Maintain headloss less than or equal to 3 ft/1000 ft for 8", 12" and 16" pipelines, for maximum day conditions without fire flow.
- Desired velocities are <5 ft/sec for maximum day conditions.
- Desired maximum velocities of 20 ft/sec under maximum day conditions plus fire flow, or other emergency conditions.

## **Fire Flow Modeling Criteria**

Fire flow calculations will be required at all critical hydrants under full-build out conditions and partial build out conditions. Critical hydrants are typically those with the largest required fire flow, and/or the highest flange elevation, in each building area and/or phase. Modeled fire flows should be reduced by 10% then rounded down to whole hundred. For example, a modeled fire flow of 2,663 gpm reduced by 10% is 2,396.7 gpm, which rounded down to whole hundred is 2,300 gpm.