

# PAINT BRUSH HILLS METROPOLITAN DISTRICT SCENIC VIEW AT PAINT BRUSH HILLS POND MODIFICATIONS

LOCATED WITHIN THE NORTHWEST QUARTER OF SECTION 25,  
TOWNSHIP 12 SOUTH, RANGE 65 WEST OF THE SIXTH PRINCIPAL MERIDIAN,  
COUNTY OF EL PASO, STATE OF COLORADO

MAY 2022

## CONTACTS

### REVIEWING AGENCY

EL PASO COUNTY DEVELOPMENT SERVICES DEPARTMENT

2880 INTERNATIONAL CIRCLE  
COLORADO SPRINGS, CO 80910  
(719) 520-6300

### OWNER

PAINT BRUSH HILLS METROPOLITAN DISTRICT  
9985 TOWNER AVENUE  
PEYTON, CO 80831  
ROBERT GUEVARA, DISTRICT MANAGER  
(719) 495-8188, FAX (719) 495-8008

### ENGINEERING

RG AND ASSOCIATES, LLC  
4885 WARD ROAD, SUITE 100  
WHEAT RIDGE, CO 80033  
(303) 293-8107, FAX (303) 293-8106  
RICARDO GONCALVES, PE  
(303) 468-8464  
EMAIL: RICKG@RGENGINEERS.COM

### EMERGENCY SERVICES

FIRE:  
FALCON FIRE PROTECTION DISTRICT  
7030 OLD MERIDIAN ROAD  
FALCON, CO 80831  
TRENT HARWIG, FIRE CHIEF  
(719) 495-4050 FAX (719) 495-3112  
WWW.FALCONFIREPD.ORG

### UTILITIES

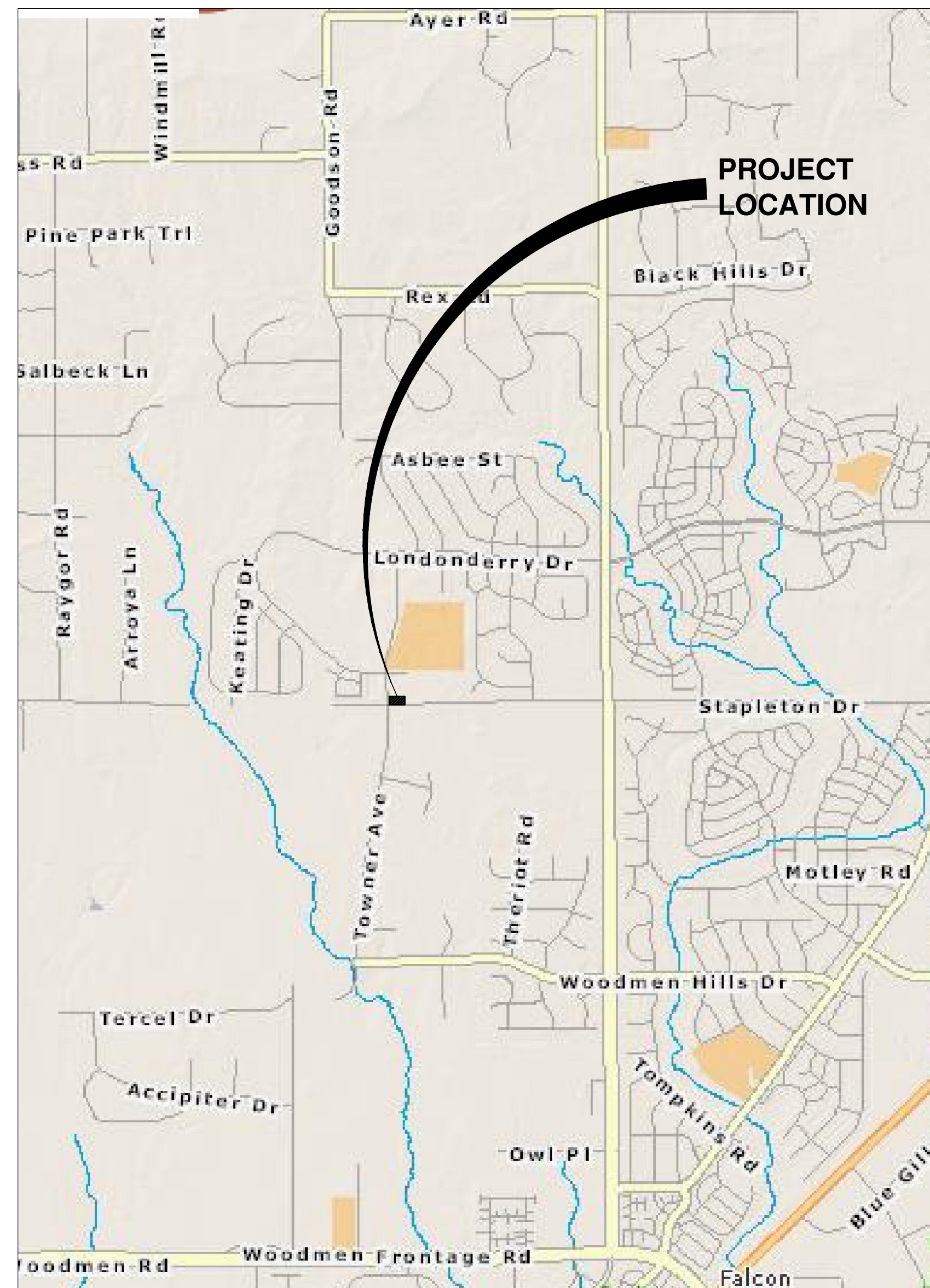
ELECTRIC:  
MOUNTAIN VIEW ELECTRIC ASSOCIATION, INC.  
111140 E. WOODMAN ROAD  
FALCON, CO 80831  
(719) 495-2283  
WWW.MVEA.COOP

WATER & SEWER:  
PAINT BRUSH HILLS METROPOLITAN DISTRICT  
9985 TOWNER AVENUE  
PEYTON, CO 80831  
(719) 495-8188

COMMUNICATIONS:  
CENTURYLINK  
3556 NEW CENTER POINT  
COLORADO SPRINGS, CO 80922  
(719) 591-0861

COMMUNICATIONS:  
FALCON BROADBAND, INC.  
555 HATHAWAY DRIVE  
COLORADO SPRINGS, CO 80915  
(719) 573-5343

GAS:  
BLACK HILLS ENERGY  
18965 BASE CAMP RD A-7  
MONUMENT, CO 80132  
(888) 890-5554  
WWW.BLACKHILLSENERGY.COM



**VICINITY MAP**  
1" = 2000 FEET

## SHEET INDEX

SHEET NO.	DESCRIPTION
1	COVER SHEET
2	GENERAL NOTES
3	GRADING PLAN
4	SPILLWAY ELEVATIONS
5	DETAILS
6	EROSION CONTROL PLAN
7	EROSION CONTROL DETAILS
8	EROSION CONTROL DETAILS

Please add the following signature blocks:

**Design Engineer's Statement:**

The attached drainage plan and report were prepared under my direction and supervision and are correct to the best of my knowledge and belief. Said drainage report has been prepared according to the criteria established by the County for drainage reports and said report is in conformity with the applicable master plan of the drainage basin. I accept responsibility for any liability caused by any negligent acts, errors or omissions on my part in preparing this report.

[Name, P.E. # \_\_\_\_\_] Date \_\_\_\_\_

**Owner/Developer's Statement:**

I, the owner/developer have read and will comply with all of the requirements specified in this drainage report and plan.

[Name, Title] Date \_\_\_\_\_  
[Business Name]  
[Address]

El Paso County:

Filed in accordance with the requirements of the Drainage Criteria Manual, Volumes 1 and 2, El Paso County Engineering Criteria Manual and Land Development Code as amended.

Joshua Palmer, P.E. Date \_\_\_\_\_  
Interim County Engineer / ECM Administrator

Conditions:

Remove note.

Add PCD File No.  
CDR-229

RICARDO GONCALVES, PE FOR  
RG AND ASSOCIATES, LLC



PREPARED FOR:  
  
paint brush hills  
metropolitan district

PREPARED BY:  
  
**RG AND ASSOCIATES, LLC**  
4885 Ward Road, Suite 100 • Wheat Ridge, CO • 80033  
303-293-8107 • 303-293-8106 (fax) • www.rgengineers.com

**ISSUED FOR REVIEW**  
THIS DRAWING IS UNCHECKED  
NOT FOR CONSTRUCTION

S:\1070 - Paint Brush Hills Metropolitan District\1070.0022 - SCENIC - View Detention Pond\DWG102 NOTES.dwg, 03 NOV 2022, 5:12:02Z, 11:34:23 AM, DWG To PDF #23

GENERAL NOTES:

- 1. ALL CONSTRUCTION SHALL COMPLY WITH PAINT BRUSH HILLS METROPOLITAN DISTRICT SPECIFICATIONS.
2. THE CONTRACTOR SHALL CONTACT ALL APPROPRIATE UTILITY COMPANIES AND EL PASO COUNTY PRIOR TO THE BEGINNING OF ANY CONSTRUCTION.
3. ALL ITEMS SHOWN ON THE PLANS AS EXISTING ARE SHOWN IN APPROXIMATE LOCATIONS ONLY.
4. THE DISTRICT ENGINEER AND OTHER APPROVING AGENCIES ARE TO BE NOTIFIED AT LEAST 48 HOURS PRIOR TO CONSTRUCTION.
5. THE CONTRACTOR SHALL OBTAIN, AT HIS EXPENSE, ALL PERMITS WHICH ARE NECESSARY TO PERFORM THE PROPOSED WORK.
6. ALL CONCRETE SHALL BE A MINIMUM OF CDOT CLASS B, 4,500 PSI POUND COMPRESSION STRENGTH AT 28 DAYS.
7. THE DESIGN ENGINEER SHALL SUBMIT ONE (1) SET OF ROLLED "AS-BUILT" PRINTS TO THE DISTRICT ENGINEER FOR APPROVAL PRIOR TO PRINTING MYLAR SEPIAS AND ELECTRONIC FILES FOR THE DISTRICT.
8. ALL BACKFILL MATERIAL SHALL BE COMPACTED TO 95% STANDARD PROCTOR DENSITY.
9. TRENCHES SHALL BE EXCAVATED AND THE PIPE EXPOSED FOR THE INSPECTION AT ANY LOCATION ON THE PROJECT IF SO ORDERED BY THE INSPECTOR.
10. NO WORK SHALL BE BACKFILLED UNTIL THE CONSTRUCTION HAS BEEN INSPECTED AND APPROVED FOR BACKFILLING BY THE DISTRICT ENGINEER OR REPRESENTATIVE OF THE DISTRICT ENGINEER.
11. THE CONTRACTOR SHALL HAVE IN HIS POSSESSION AT ALL TIMES ONE (1) SIGNED COPY OF THE PLANS AND SPECIFICATIONS WHICH HAVE BEEN APPROVED BY THE PAINT BRUSH HILLS METROPOLITAN DISTRICT AND THE DISTRICT ENGINEER.
12. THE CONTRACTOR SHALL NOTIFY THE PAINT BRUSH HILLS METROPOLITAN DISTRICT AND THE DISTRICT ENGINEER AT LEAST 48 HOURS PRIOR TO ANY CONSTRUCTION.

DISTRICT ACCEPTANCE NOTES:

- 1. UPON COMPLETION OF ALL CONSTRUCTION AND TESTING, THE CONTRACTOR SHALL CONTACT THE DISTRICT FOR AN INITIAL WALK-THRU. A PUNCHLIST WILL BE PROVIDED TO THE CONTRACTOR UPON COMPLETION OF THE INITIAL WALK-THRU AND ONCE THE PUNCHLIST ITEMS HAVE BEEN COMPLETED, THE DISTRICT WILL ISSUE ACCEPTANCE AND ANY WARRANTY PERIODS WILL COMMENCE.

EL PASO COUNTY STANDARD CONSTRUCTION NOTES:

- 1. ALL DRAINAGE AND ROADWAY CONSTRUCTION SHALL MEET THE STANDARDS AND SPECIFICATIONS OF THE CITY OF COLORADO SPRINGS/EL PASO COUNTY DRAINAGE CRITERIA MANUAL, VOLUMES 1 AND 2, AND THE EL PASO COUNTY ENGINEERING CRITERIA MANUAL.
2. CONTRACTOR SHALL BE RESPONSIBLE FOR THE NOTIFICATION AND FIELD NOTIFICATION OF ALL EXISTING UTILITIES, WHETHER SHOWN ON THE PLANS OR NOT, BEFORE BEGINNING CONSTRUCTION.
3. CONTRACTOR SHALL KEEP A COPY OF THESE APPROVED PLANS, THE GRADING AND EROSION CONTROL PLAN, THE STORMWATER MANAGEMENT PLAN (SWMP) AND THE APPROPRIATE DESIGN AND CONSTRUCTION STANDARDS AND SPECIFICATIONS AT THE JOB SITE AT ALL TIMES, INCLUDING THE FOLLOWING:
4. NOTWITHSTANDING ANYTHING DEPICTED IN THESE PLANS IN WORDS OR GRAPHIC REPRESENTATION, ALL DESIGN AND CONSTRUCTION RELATED TO ROADS, STORM DRAINAGE AND EROSION CONTROL SHALL CONFORM TO THE STANDARDS AND REQUIREMENTS OF THE MOST RECENT VERSION OF THE RELEVANT ADOPTED EL PASO COUNTY STANDARDS.
5. IT IS THE DESIGN ENGINEER'S RESPONSIBILITY TO ACCURATELY SHOW EXISTING CONDITIONS, BOTH ONSITE AND OFFSITE, ON THE CONSTRUCTION PLANS.
6. CONTRACTOR SHALL SCHEDULE A PRE-CONSTRUCTION MEETING WITH EL PASO COUNTY DEVELOPMENT SERVICES DEPARTMENT (DSD) - INSPECTIONS, PRIOR TO STARTING CONSTRUCTION.
7. IT IS THE CONTRACTOR'S RESPONSIBILITY TO UNDERSTAND THE REQUIREMENTS OF ALL JURISDICTIONAL AGENCIES AND TO OBTAIN ALL REQUIRED PERMITS.
8. CONTRACTOR SHALL NOT DEVIATE FROM THE PLANS WITHOUT FIRST OBTAINING WRITTEN APPROVAL FROM THE DESIGN ENGINEER AND DSD.
9. ALL STORM DRAIN PIPE SHALL BE CLASS III RCP UNLESS OTHERWISE NOTED AND APPROVED BY DSD.
10. CONTRACTOR SHALL COORDINATE GEOTECHNICAL TESTING PER ECM STANDARDS.
11. THE LIMITS OF CONSTRUCTION SHALL REMAIN WITHIN THE PROPERTY LINE UNLESS OTHERWISE NOTED.

EROSION CONTROL NOTES:

- 1. STORMWATER DISCHARGES FROM CONSTRUCTION SITES SHALL NOT CAUSE OR THREATEN TO CAUSE POLLUTION, CONTAMINATION, OR DEGRADATION OF STATE WATERS.
2. NOTWITHSTANDING ANYTHING DEPICTED IN THESE PLANS IN WORDS OR GRAPHIC REPRESENTATION, ALL DESIGN AND CONSTRUCTION RELATED TO ROADS, STORM DRAINAGE AND EROSION CONTROL SHALL CONFORM TO THE STANDARDS AND REQUIREMENTS OF THE MOST RECENT VERSION OF THE RELEVANT ADOPTED EL PASO COUNTY STANDARDS.
3. A SEPARATE STORMWATER MANAGEMENT PLAN (SWMP) FOR THIS PROJECT SHALL BE COMPLETED AND AN EROSION AND STORMWATER QUALITY CONTROL PERMIT (ESQCP) ISSUED PRIOR TO COMMENCING CONSTRUCTION.
4. ONCE THE ESQCP IS APPROVED AND A "NOTICE TO PROCEED" HAS BEEN ISSUED, THE CONTRACTOR MAY INSTALL THE INITIAL STAGE EROSION AND SEDIMENT CONTROL MEASURES AS INDICATED ON THE APPROVED GEC.
5. CONTROL MEASURES MUST BE INSTALLED PRIOR TO COMMENCEMENT OF ACTIVITIES THAT MAY CONTRIBUTE POLLUTANTS TO STORMWATER.
6. ALL TEMPORARY SEDIMENT AND EROSION CONTROL MEASURES SHALL BE MAINTAINED AND REMAIN IN EFFECTIVE OPERATING CONDITION UNTIL PERMANENT SOIL EROSION CONTROL MEASURES ARE IMPLEMENTED.
7. TEMPORARY STABILIZATION SHALL BE IMPLEMENTED ON DISTURBED AREAS AND STOCKPILES WHERE GROUND DISTURBING CONSTRUCTION ACTIVITY HAS PERMANENTLY CEASED OR TEMPORARILY CEASED FOR LONGER THAN 14 DAYS.
8. FINAL STABILIZATION MUST BE IMPLEMENTED AT ALL APPLICABLE CONSTRUCTION SITES.
9. ALL PERMANENT STORMWATER MANAGEMENT FACILITIES SHALL BE INSTALLED AS DEFINED IN THE APPROVED PLANS.
10. ANY EARTH DISTURBANCE SHALL BE CONDUCTED IN SUCH A MANNER SO AS TO EFFECTIVELY MINIMIZE ACCELERATED SOIL EROSION AND RESULTING SEDIMENTATION.
11. COMPACTED SOIL MUST BE PREVENTED IN AREAS DESIGNATED FOR INFILTRATION CONTROL MEASURES.
12. ANY TEMPORARY OR PERMANENT FACILITY DESIGNED AND CONSTRUCTED FOR THE CONVEYANCE OF STORMWATER.
13. CONCRETE WASH WATER SHALL BE CONTAINED AND DISPOSED OF IN ACCORDANCE WITH THE SWMP.
14. DEWATERING OPERATIONS: UNCONTAMINATED GROUND WATER MAY BE DISCHARGED ON SITE.
15. EROSION CONTROL BLANKETING IS TO BE USED ON SLOPES STEEPER THAN 3:1.
16. BUILDING, CONSTRUCTION, EXCAVATION, OR OTHER WASTE MATERIALS SHALL NOT BE TEMPORARILY PLACED OR STORED IN THE STREET, ALLEY, OR OTHER PUBLIC WAY.
17. VEHICLE TRACKING OF SOILS AND CONSTRUCTION DEBRIS OFF-SITE SHALL BE MINIMIZED.
18. CONTRACTOR SHALL BE RESPONSIBLE FOR THE REMOVAL OF ALL WASTES FROM THE CONSTRUCTION SITE.
19. THE OWNER, SITE DEVELOPER, CONTRACTOR, AND/OR THEIR AUTHORIZED AGENTS SHALL BE RESPONSIBLE FOR THE REMOVAL OF ALL CONSTRUCTION DEBRIS.
20. THE QUANTITY OF MATERIALS STORED ON THE PROJECT SITE SHALL BE LIMITED.
21. NO CHEMICALS ARE TO BE USED BY THE CONTRACTOR.
22. BULK STORAGE OF PETROLEUM PRODUCTS OR OTHER LIQUID CHEMICALS IN EXCESS OF 55 GALLONS SHALL HAVE ADEQUATE SECONDARY CONTAINMENT PROTECTION.
23. NO PERSON SHALL CAUSE THE IMPEDIMENT OF STORMWATER FLOW IN THE FLOW LINE OF THE CURB AND GUTTER OR IN THE DITCH FLOW LINE.

EROSION CONTROL NOTES (CONTD):

- 24. INDIVIDUALS SHALL COMPLY WITH THE "COLORADO WATER QUALITY CONTROL ACT"(TITLE 25, ARTICLE 8, CRS), AND THE "CLEAN WATER ACT" (33 USC 1344), IN ADDITION TO THE REQUIREMENTS INCLUDED IN THE DCM VOLUME II AND THE ECM APPENDIX I.
25. ALL CONSTRUCTION TRAFFIC MUST ENTER/EXIT THE SITE AT APPROVED CONSTRUCTION ACCESS POINTS.
26. PRIOR TO ACTUAL CONSTRUCTION THE PERMITEE SHALL VERIFY THE LOCATION OF EXISTING UTILITIES.
27. A WATER SOURCE SHALL BE AVAILABLE ON SITE DURING EARTHWORK OPERATIONS AND UTILIZED AS REQUIRED TO MINIMIZE DUST FROM EARTHWORK EQUIPMENT AND WIND.
28. AT LEAST TEN (10) DAYS PRIOR TO THE ANTICIPATED START OF CONSTRUCTION, FOR PROJECTS THAT WILL DISTURB 1 ACRE OR MORE, THE OWNER OR OPERATOR OF CONSTRUCTION ACTIVITY SHALL SUBMIT A PERMIT APPLICATION FOR STORMWATER DISCHARGE TO THE COLORADO DEPARTMENT OF PUBLIC HEALTH AND ENVIRONMENT, WATER QUALITY DIVISION.
COLORADO DEPARTMENT OF PUBLIC HEALTH AND ENVIRONMENT WATER QUALITY CONTROL DIVISION WQCD -PERMITS:
4300 CHERRY CREEK DRIVE SOUTH DENVER, CO 80246-1530 ATTN: PERMITS UNIT

PAINTBRUSH HILLS METRO DISTRICT GENERAL NOTES:

- 1. COMPACTION REQUIREMENTS SHALL BE 95% STANDARD PROCTOR AS DETERMINED BY ASTM D698, UNLESS OTHERWISE APPROVED BY THE PAINTBRUSH HILLS METRO DISTRICT OR A HIGHER STANDARD IS IMPOSED BY ANOTHER AGENCY HAVING RIGHT-OF-WAY JURISDICTION.
2. ALL MATERIALS AND WORKMANSHIP SHALL BE SUBJECT TO INSPECTION BY THE PAINTBRUSH HILLS METRO DISTRICT.
3. THE CONTRACTOR IS REQUIRED TO NOTIFY THE PAINTBRUSH HILLS METRO DISTRICT (495-8188) A MINIMUM OF 48 HOURS AND A MAXIMUM OF 96 HOURS PRIOR TO THE START OF CONSTRUCTION.
4. THE LOCATION OF ALL UTILITIES AS SHOWN ON THESE DRAWINGS ARE APPROXIMATE ONLY.
5. THE CONTRACTOR SHALL FIELD EXCAVATE AND VERIFY THE VERTICAL AND HORIZONTAL LOCATION OF ALL TIE-INS.
6. THE CONTRACTOR SHALL AT HIS EXPENSE SUPPORT AND PROTECT ALL UTILITY MAINS SO THAT THEY WILL FUNCTION CONTINUOUSLY DURING CONSTRUCTION.
7. ANY PUMPING OR BYPASS OPERATIONS MUST BE REVIEWED AND APPROVED PRIOR TO EXECUTION BY BOTH THE PAINTBRUSH HILLS METRO DISTRICT AND THE ENGINEER.
8. CONTRACTOR MUST REPLACE OR REPAIR ANY DAMAGE TO ALL SURFACE IMPROVEMENTS, INCLUDING BUT NOT LIMITED TO FENCES, CURB AND GUTTER, LANDSCAPING, AND/OR ASPHALT THAT MAY BE CAUSED DURING CONSTRUCTION.
9. PRIOR TO CONSTRUCTION, A PRE-CONSTRUCTION CONFERENCE IS REQUIRED A MINIMUM OF 72 HOURS IN ADVANCE OF COMMENCEMENT OF WORK.

CONSTRUCTION NOTES:

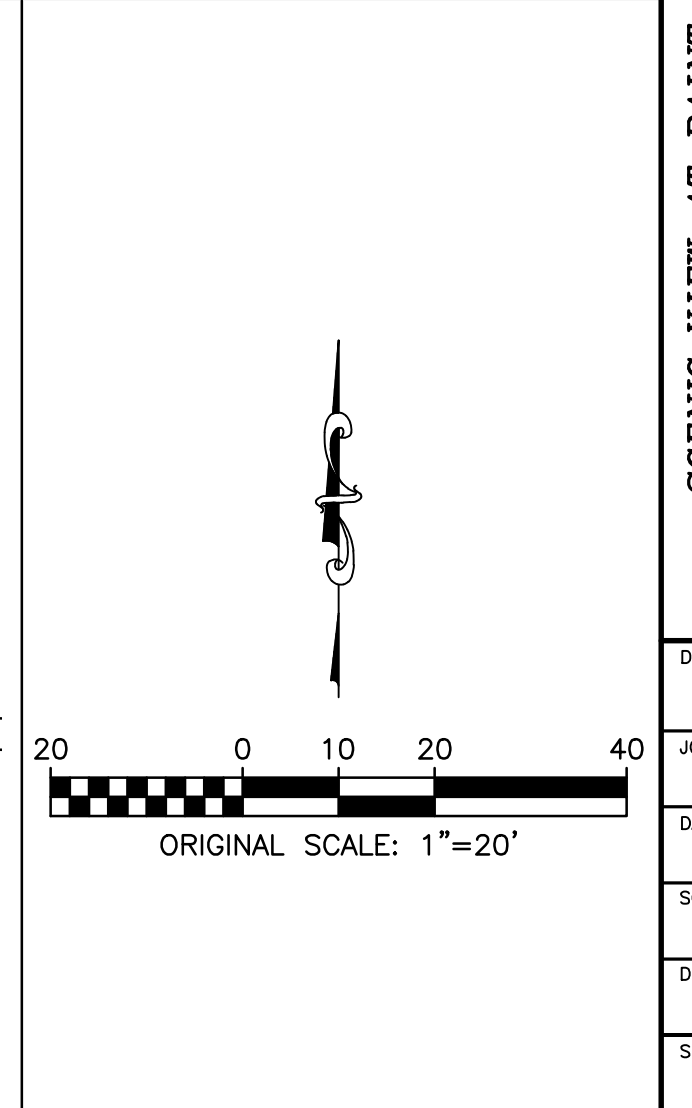
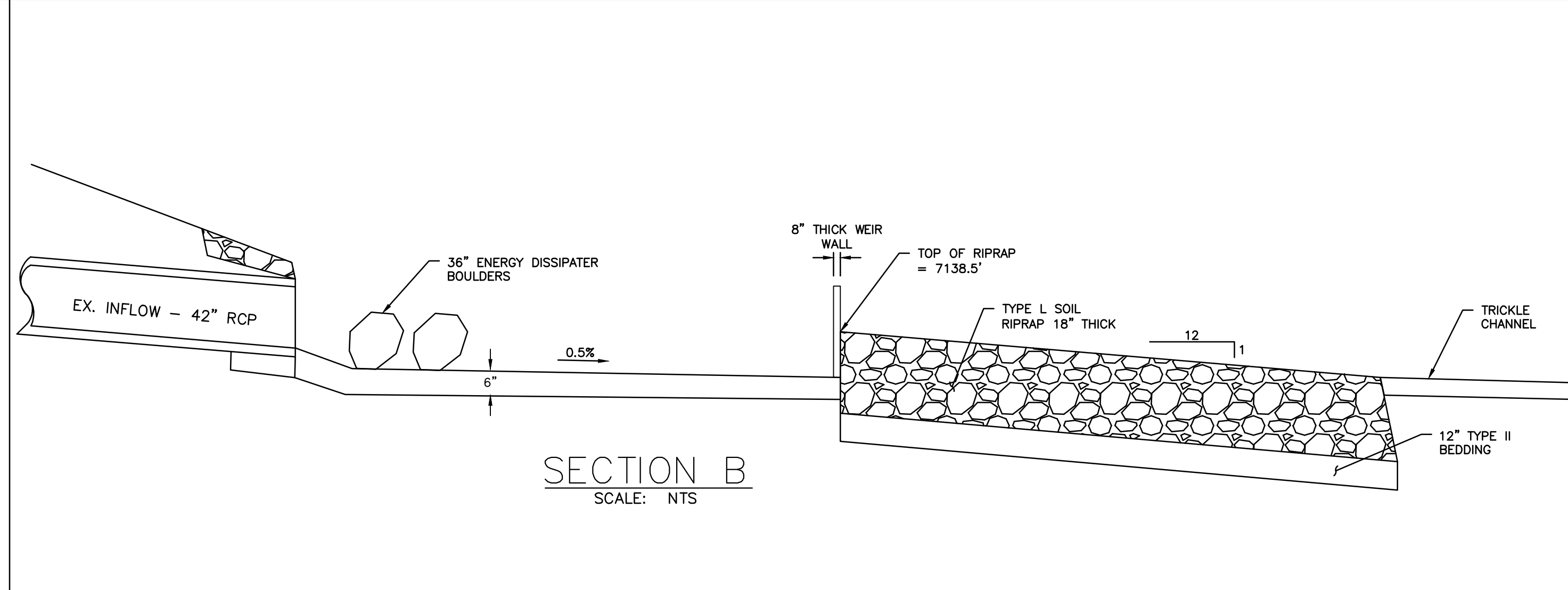
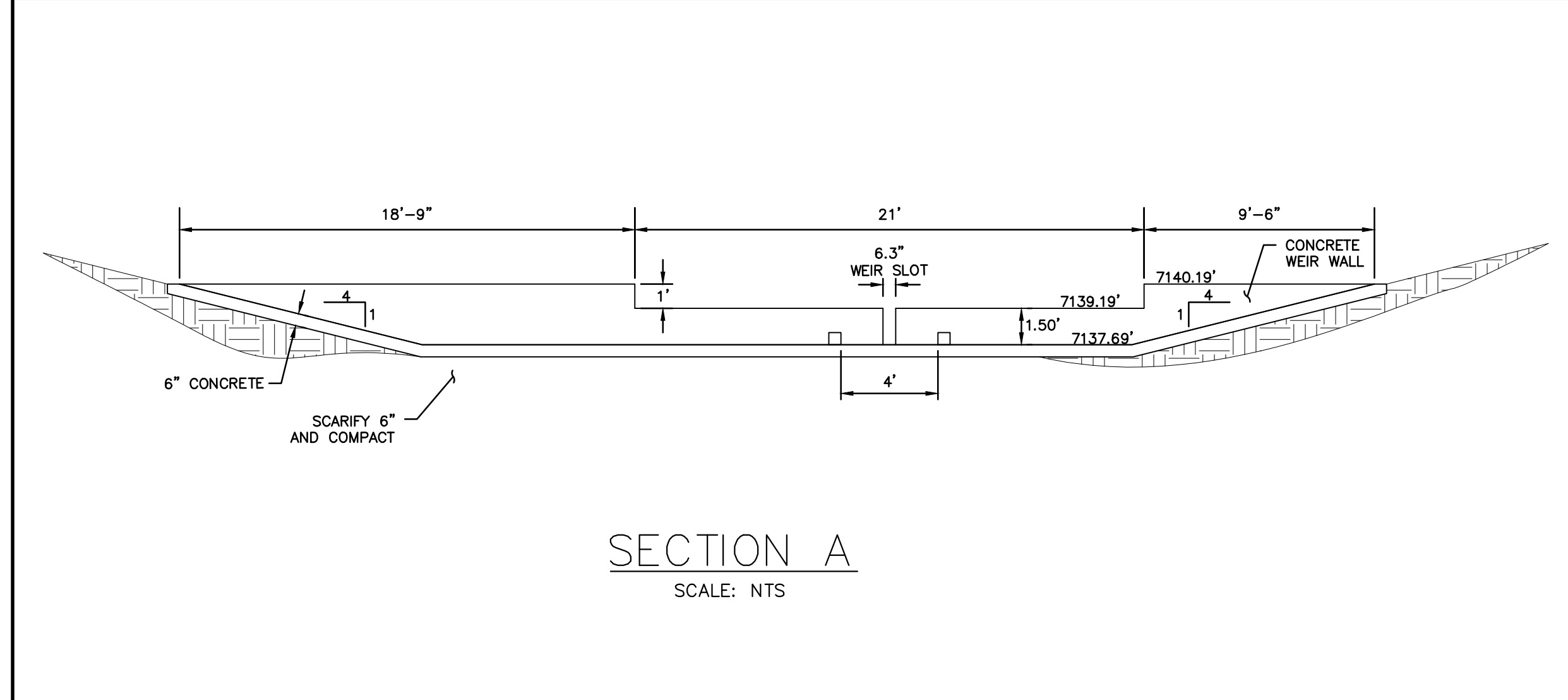
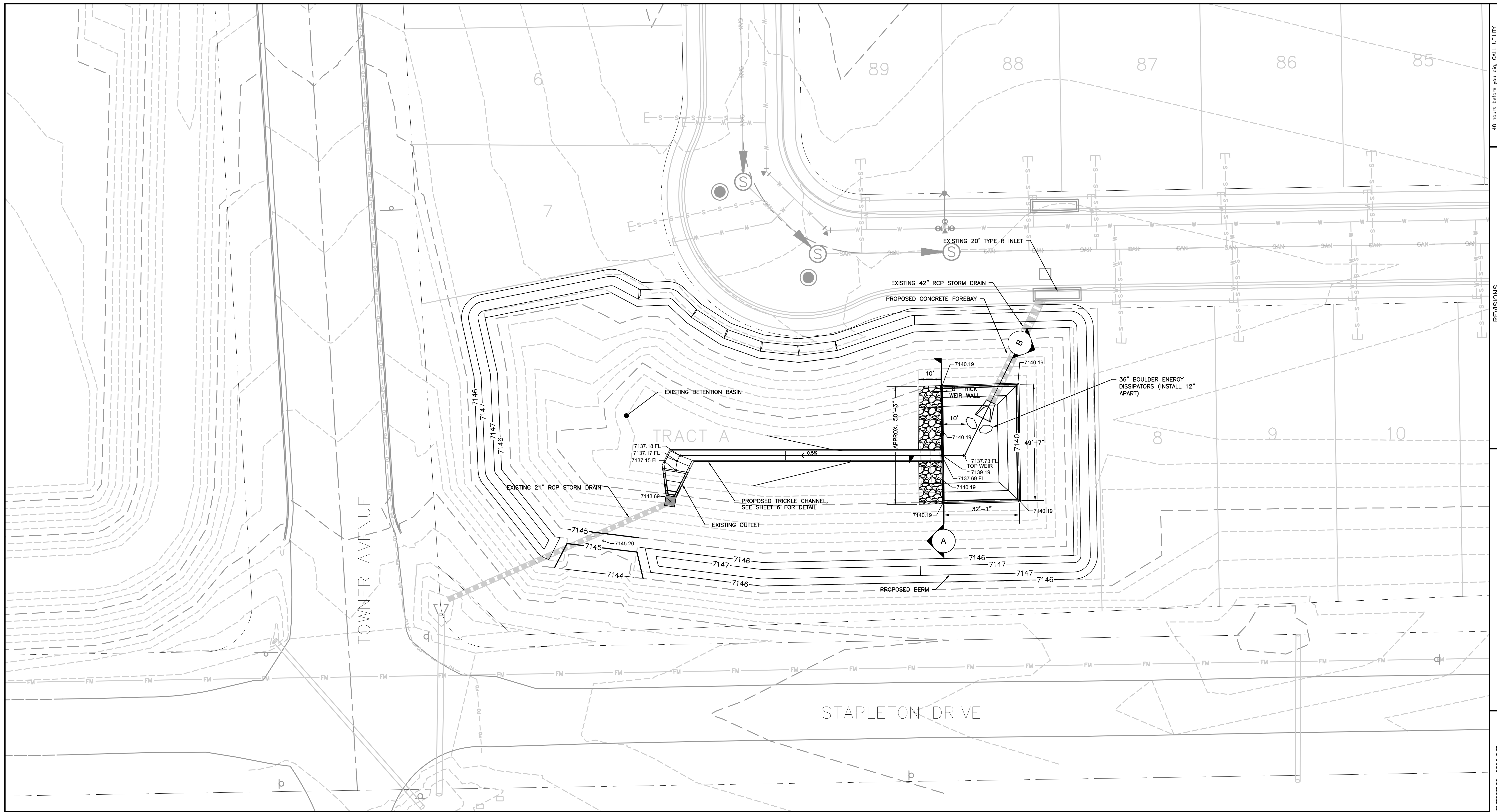
- 1. ALL WORK SHALL CONFORM TO MILE HIGH FLOOD DISTRICT CONSTRUCTION SPECIFICATIONS.
2. CAST-IN-PLACE CONCRETE SHALL BE CDOT CLASS B, 4,500 PSI AT 28 DAYS.
3. ALL STEEL REINFORCEMENT SHALL BE GRADE 60 AND EPOXY--COATED.
a. REINFORCEMENT FOR OUTLET STRUCTURE MODIFICATIONS SHALL BE IN ACCORDANCE WITH A CDOT TYPE C INLET, PER STANDARD PLAN NO. M-604-10.

Update to include the entire EPC Construction notes. See document.



811 utility notification center, RG AND ASSOCIATES, LLC logo, drawing title 'SCENIC VIEW AT PAINT BRUSH HILLS DETENTION FOND MODIFICATIONS', general notes, revision table, and drawing metadata including date (MAY 2022) and sheet number (2 of 8).

S:\1070 - Paint Brush Hills Metropolitan District\1070.0022 - Scenic View Detention Pond\DWG\03 SITE PLAN.dwg, 03 SITE PLAN, 5/12/2022 11:34:31 AM, DWG To PDF PLOT



48 hours before you file, CALL UTILITY NOTIFICATION CENTER OF COLORADO (UNCC) **811**

Goa,Electric,Telephone,CATV, and Penetration Eastern Pipeline Locations

SCALE VERIFICATION

BAR IS ONE INCH ON ORIGINAL DRAWING

IF NOT ONE INCH ON THIS SHEET SCALE ACCORDINGLY

NO.	REVISIONS DESCRIPTION	DATE	BY

**R G AND ASSOCIATES, LLC**

4885 Ward Road, Suite 100 • Wheat Ridge, CO 80033

Del Norte • Gypsum • Wheat Ridge

303-293-8107 • www.rgengineers.com

SCENIC VIEW AT PAINT BRUSH HILLS DETENTION POND MODIFICATIONS

GRADING PLAN

DESIGNED BY: GEW

JCS

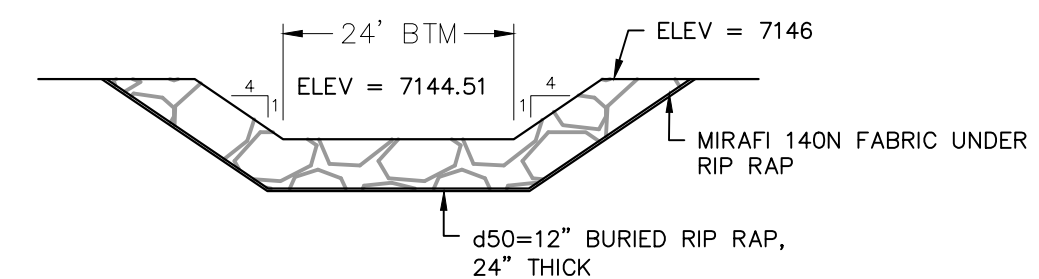
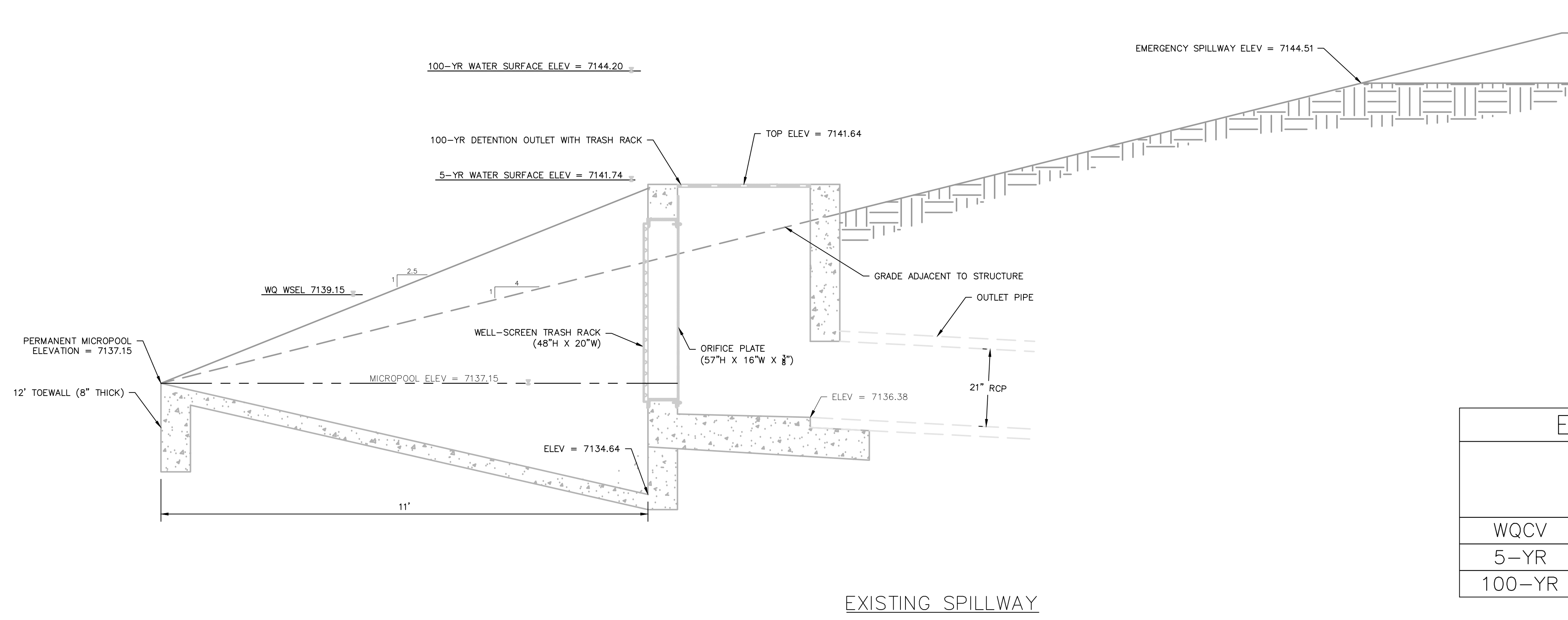
JOB NUMBER: 1070.0022

DATE: MAY 2022

SCALE: 1" = 20'

GRADING PLAN

SHEET NO: 3 of 8

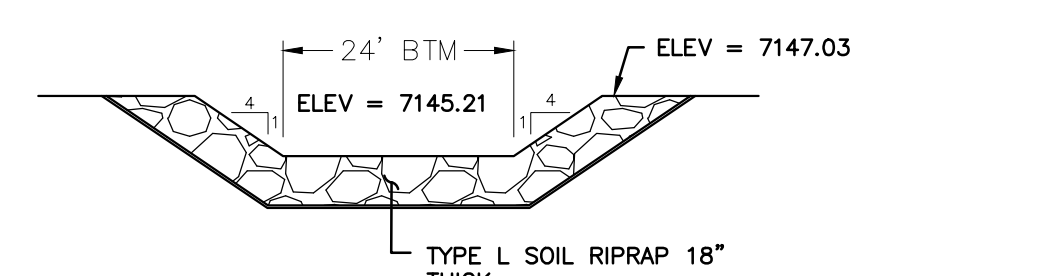
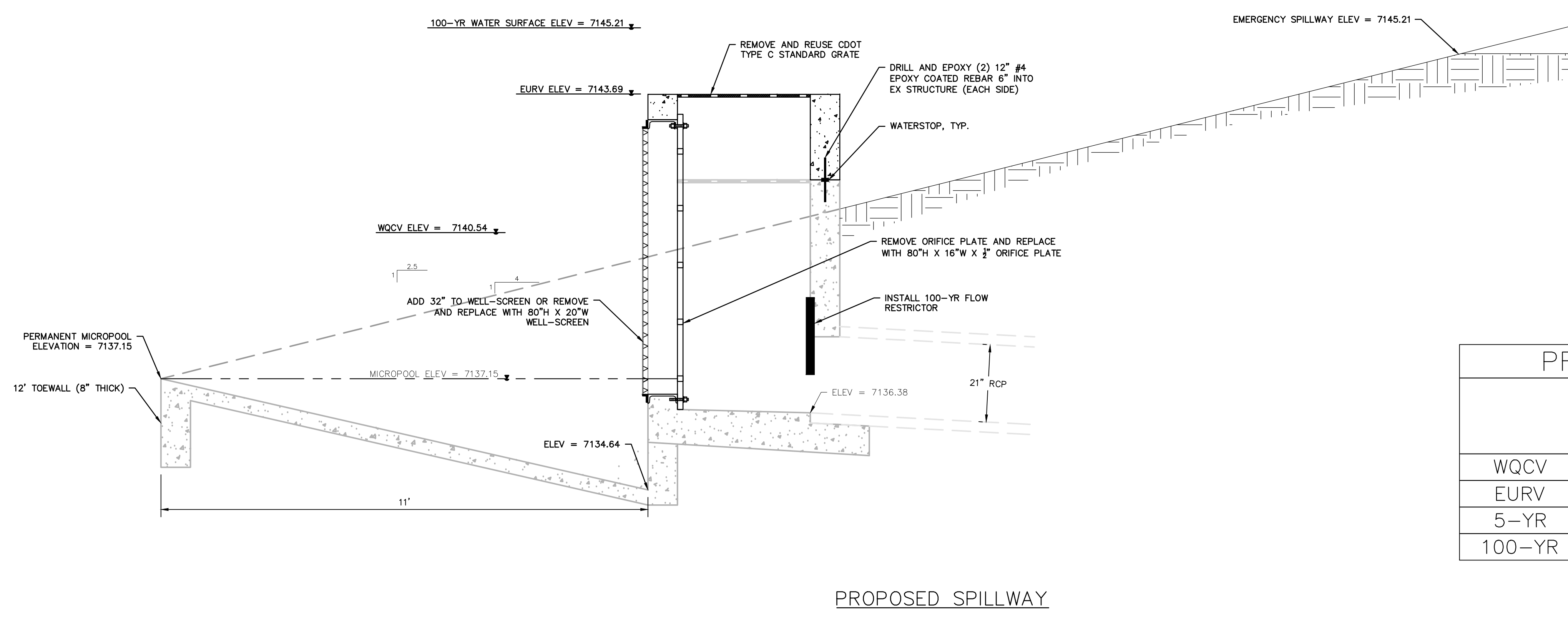


EXISTING EMERGENCY SPILLWAY DETAIL

EXISTING POND DATA TABLE

	INFLOW (CFS)	DISCHARGE (CFS)	WSEL	STORAGE (AC FT)
WQCV	--	--	7139.00	0.33
5-YR	33.20	8.80	7141.74	0.70
100-YR	70.40	28.60	7144.20	1.55

EXISTING SPILLWAY  
TYPICAL WQCV OUTLET STRUCTURE PROFILES INCLUDING 5-YEAR AND 100-YEAR DETENTION



PROPOSED EMERGENCY SPILLWAY DETAIL

PROPOSED POND DATA TABLE

	INFLOW (CFS)	DISCHARGE (CFS)	WSEL	STORAGE (AC FT)
WQCV	--	0.20	7140.54	0.39
EURV	--	0.50	7143.69	1.30
5-YR	24.00	0.50	7143.18	1.09
100-YR	70.40	27.70	7145.21	2.13

PROPOSED SPILLWAY  
TYPICAL WQCV OUTLET STRUCTURE PROFILES INCLUDING EURV AND 100-YEAR DETENTION

48 hours before you file CALL UTILITY NOTIFICATION CENTER OF COLORADO (UNCC) **811**

Goa,Electric,Telephone,CATV and Penetration Eastern Pipeline Locations

SCALE VERIFICATION  
BAR IS ONE INCH ON ORIGINAL DRAWING  
IF NOT ONE INCH ON THIS SHEET SCALE ACCORDINGLY

REVISIONS

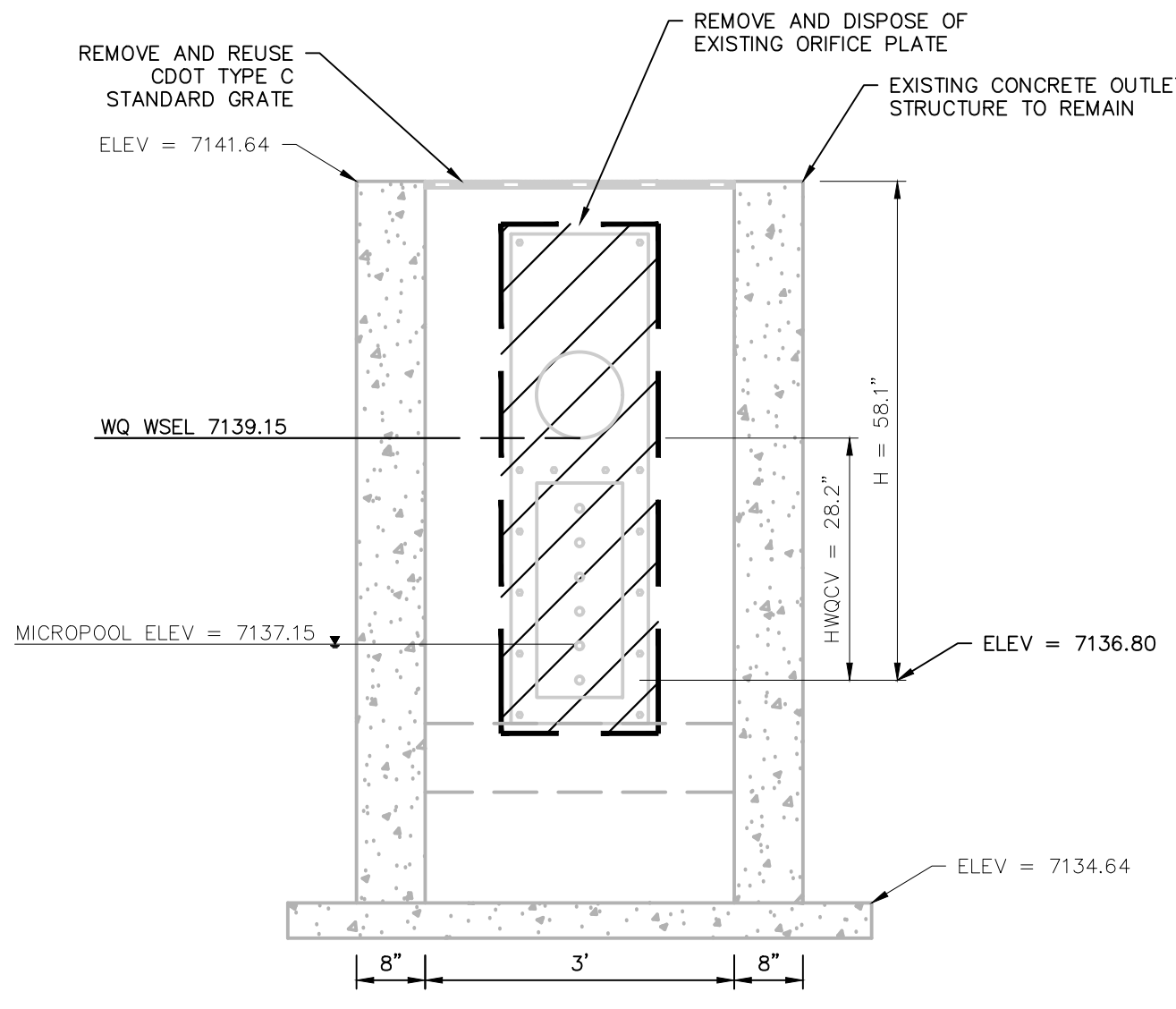
NO.	DESCRIPTION	DATE	BY

**RG AND ASSOCIATES, LLC**  
4885 Ward Road, Suite 100 • Wheat Ridge, CO 80033  
Del Norte • Gypsum • Wheat Ridge  
303-293-8107 • www.rgengineers.com

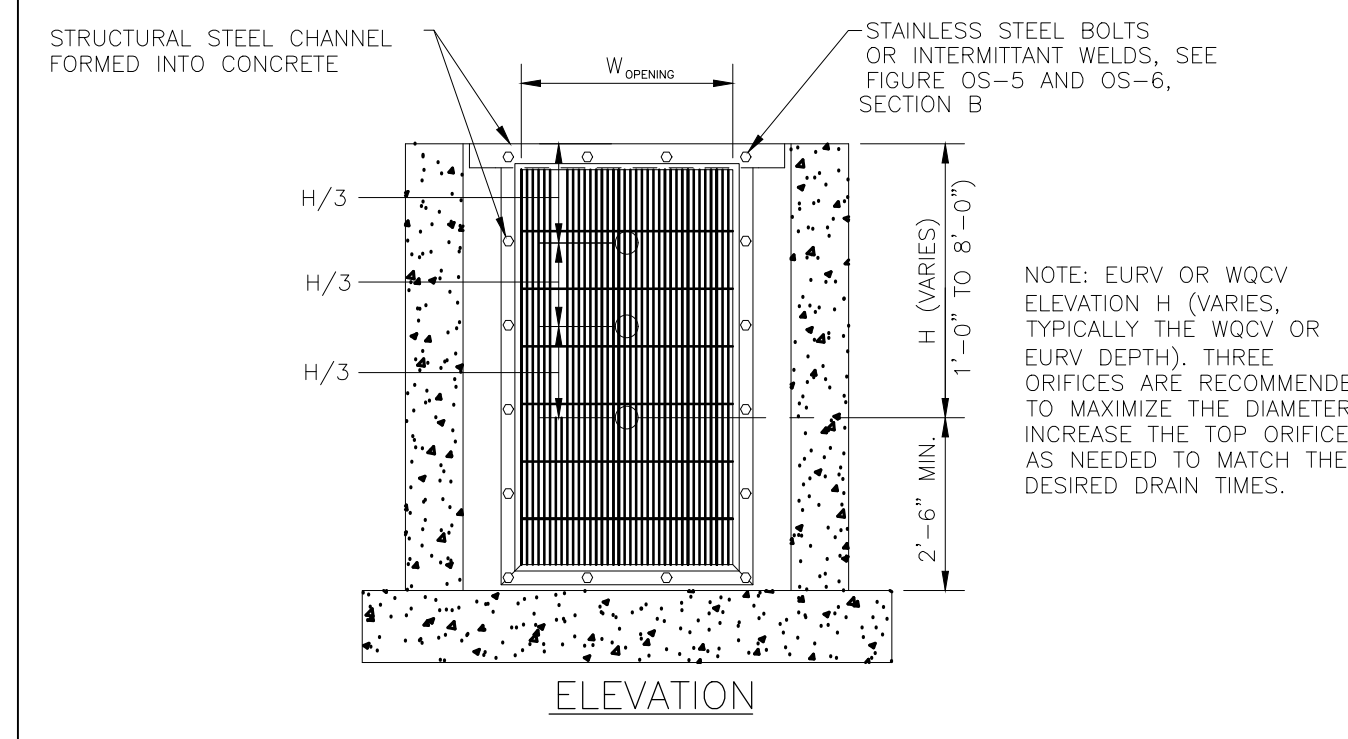
SCENIC VIEW AT PAINT BRUSH HILLS DETENTION POND MODIFICATIONS  
DESIGNED BY  
**SPILLWAY ELEVATIONS**  
FOR  
PAINT BRUSH HILLS METROPOLITAN DISTRICT  
EL PASO COUNTY, COLORADO

DRAWN BY: JCS	DESIGNED BY: GEW
JOB NUMBER: 1070.0022	
DATE: MAY 2022	
SCALE: N.T.S.	
DRAWING NAME: SPILLWAY	
SHEET NO: 4 of 8	

S:\1070 - Paint Brush Hills Metropolitan District\1070.0022 - Scenic View Detention Pond\DWG\04 DETAILS.dwg, 04 SPILLWAY, 05/12/2022 11:34:37 AM, DWG To PDF P23



EXISTING ORIFICE DETAILS



- ORIFICE PLATE NOTES:
1. PROVIDE CONTINUOUS NEOPRENE GASKET MATERIAL BETWEEN THE ORIFICE PLATE AND CONCRETE.
  2. BOLT PLATE TO CONCRETE 12" MAX. ON CENTER. SEE TABLE OS-2 FOR PLATE THICKNESS.
- EURV AND WQCV TRASH RACKS:
1. WELL-SCREEN TRASH RACKS SHALL BE STAINLESS STEEL AND SHALL BE ATTACHED BY INTERMITTENT WELDS ALONG THE EDGE OF THE MOUNTING FRAME.
  2. BAR GATE TRASH RACKS SHALL BE ALUMINUM AND SHALL BE BOLTED USING STAINLESS STEEL HARDWARE.
  3. TRASH RACK OPEN AREAS ARE FOR SPECIFIED TRASH RACK MATERIALS. TOTAL TRASH RACK SIZE MAY NEED TO BE ADJUSTED FOR MATERIALS HAVING DIFFERENT OPEN AREA/GROSS AREA RATIO (R VALUE).
  4. STRUCTURAL DESIGN OF TRASH RACKS SHALL BE BASED ON FULL HYDROSTATIC HEAD WITH ZERO HEAD DOWNSTREAM OF THE RACK.
- OVERFLOW SAFETY GRATES:
1. ALL SAFETY GRATES SHALL BE MOUNTED USING STAINLESS STEEL HARDWARE AND PROVIDED WITH HINGED AND LOCKABLE OR BOLTABLE ACCESS PANELS.
  2. SAFETY GRATES SHALL BE STAINLESS STEEL, ALUMINUM, OR STEEL. STEEL GRATES SHALL BE HOT DIP GALVANIZED AND MAY BE HOT POWDER COATED AFTER GALVANIZING.
  3. SAFETY GRATES SHALL BE DESIGNED SUCH THAT THE DIAGONAL DIMENSION OF EACH OPENING IS SMALLER THAN THE DIAMETER OF THE OUTLET PIPE.
  4. STRUCTURAL DESIGN OF SAFETY GRATES SHALL BE BASED ON FULL HYDROSTATIC HEAD WITH ZERO HEAD DOWNSTREAM OF THE RACK.

FIGURE OS-4 PROPOSED ORIFICE PLATE AND TRASH RACK DETAILS AND NOTES

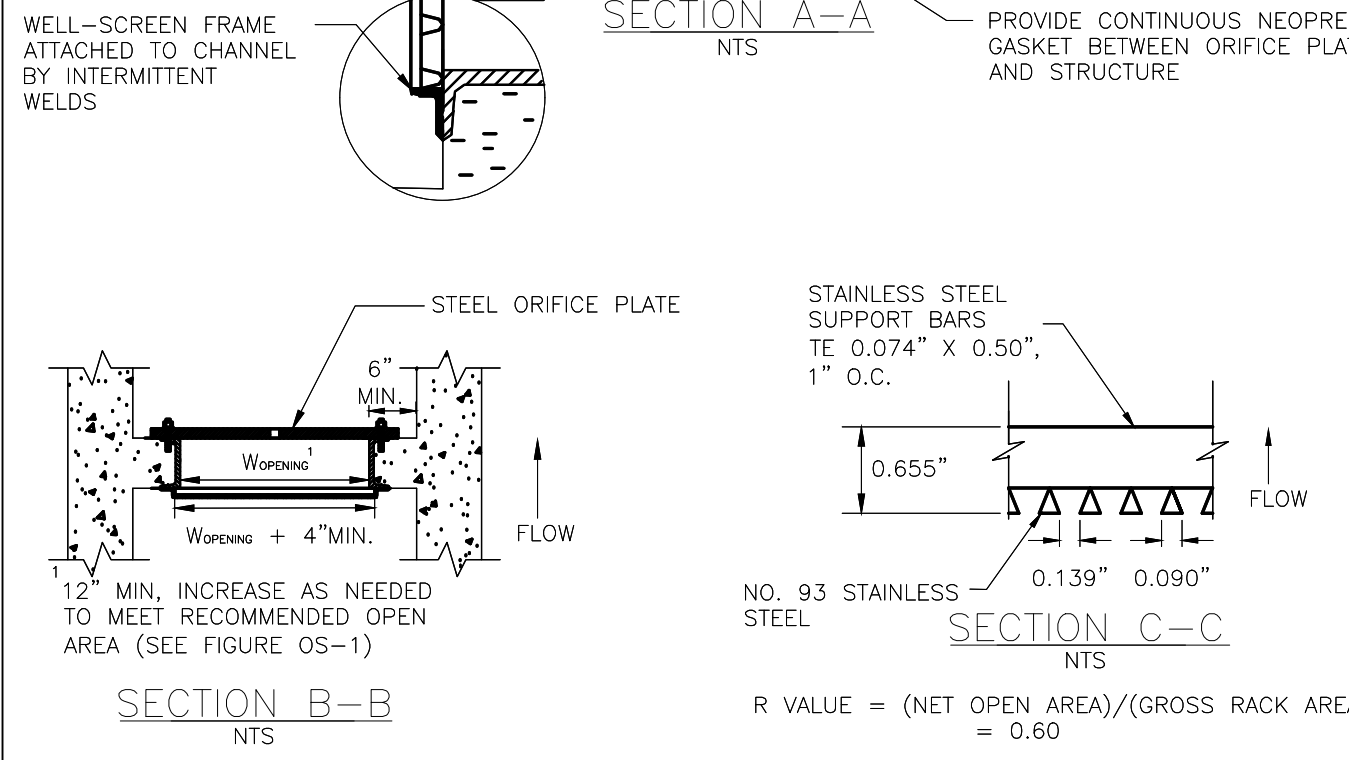
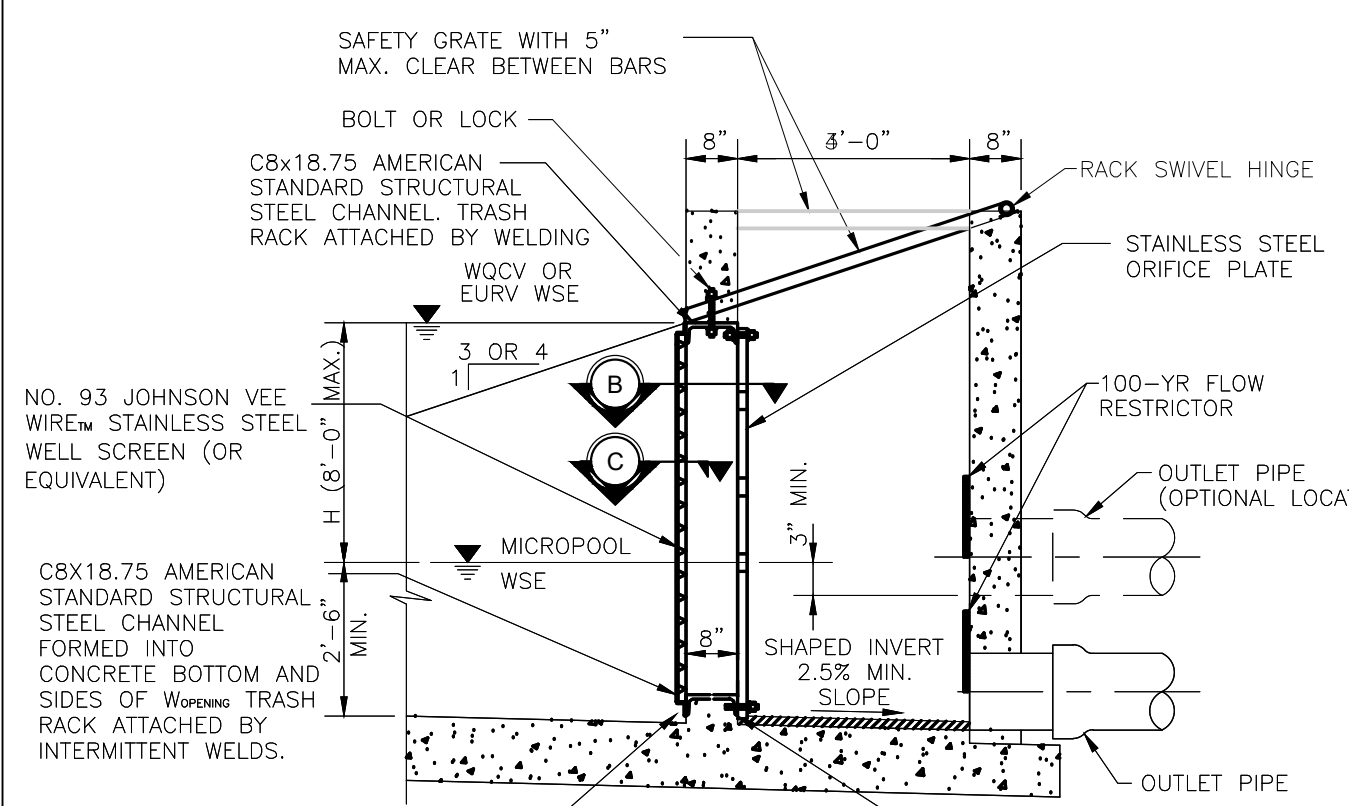


FIGURE OS-5 TYPICAL OUTLET STRUCTURE WITH WELL SCREEN TRASH RACK

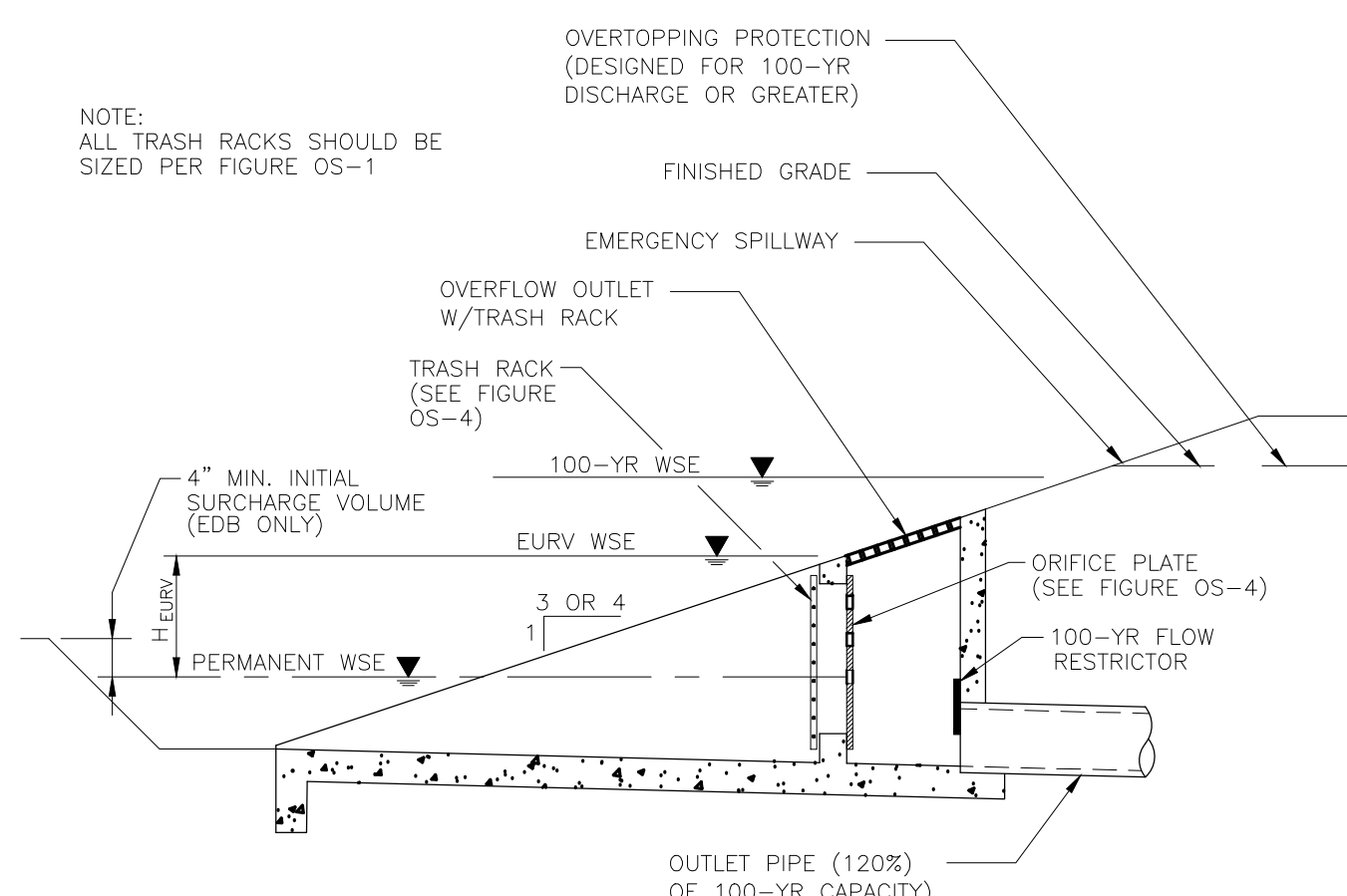


FIGURE OS-2 TYPICAL OUTLET STRUCTURE FOR FULL SPECTRUM DETENTION

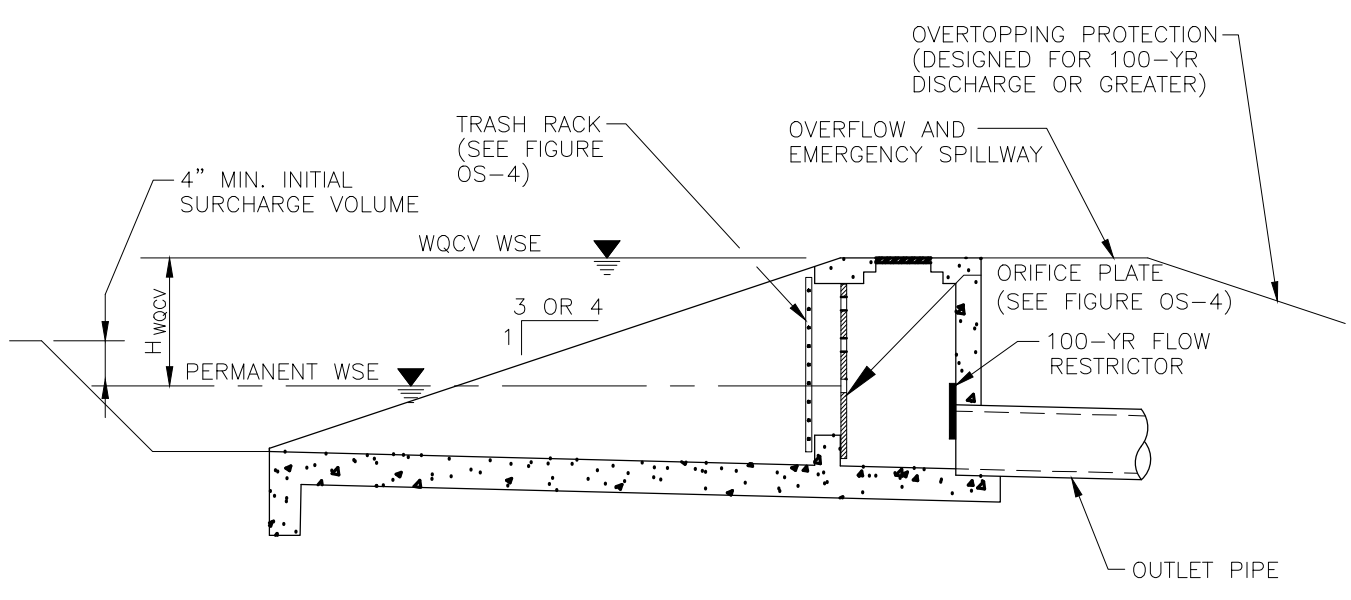
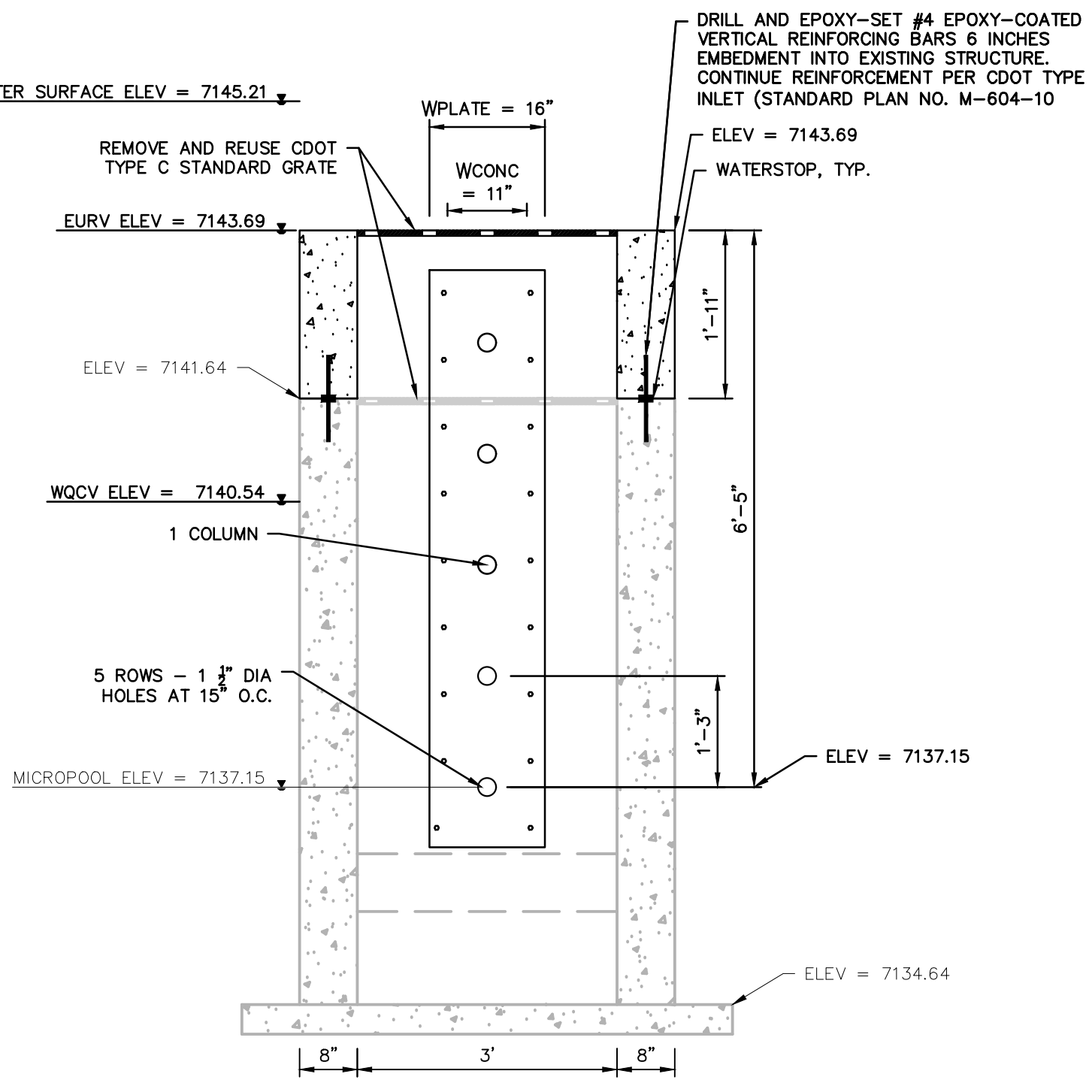
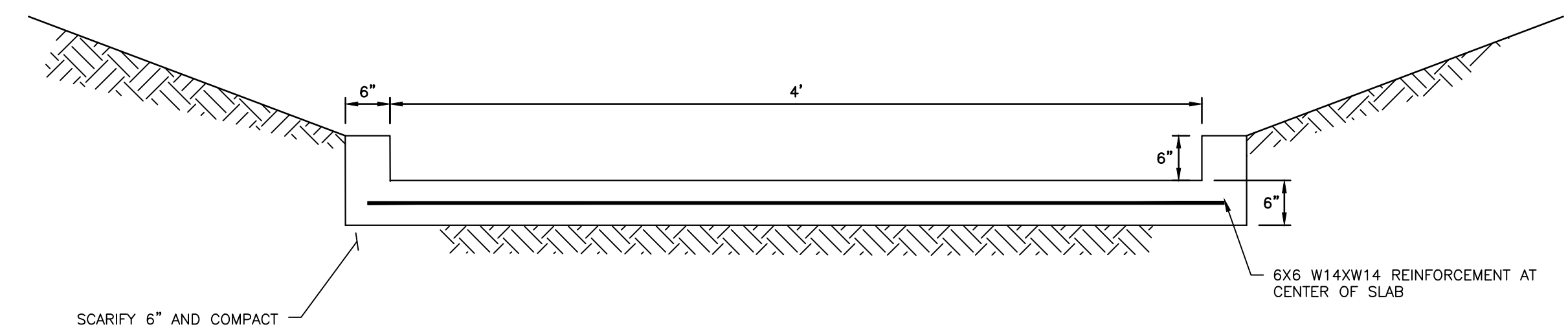


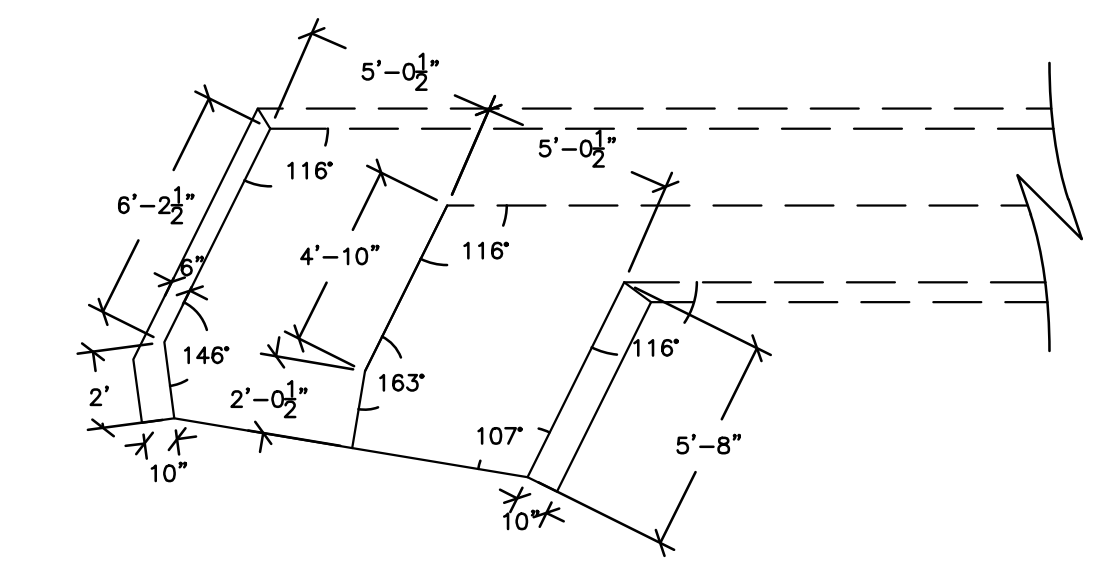
FIGURE OS-3 PROPOSED TYPICAL OUTLET STRUCTURE FOR WQCV TREATMENT AND ATTENUATION



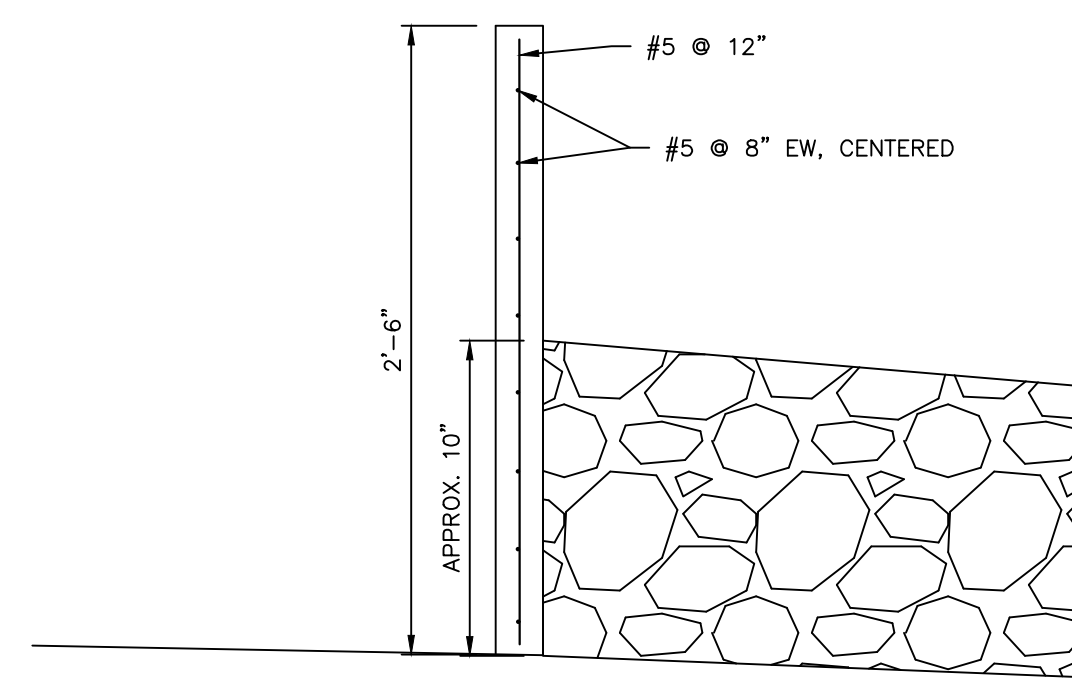
PROPOSED DROP STRUCTURE MODIFICATIONS DETAILS



TRICKLE CHANNEL - TYP. SECTION



TRICKLE CHANNEL - TRANSITION



REBAR DETAIL

48 hours before you call UTILITY NOTIFICATION CENTER OF COLORADO (UNCC) **811** Go.Electric, Telephone, CTV and Penetration Eastern Pipeline Locations  
SCALE VERIFICATION BAR IS ONE INCH ON ORIGINAL DRAWING IF NOT ONE INCH ON THIS SHEET SCALE ACCORDINGLY

NO.	REVISIONS	DESCRIPTION	DATE	BY








**RG AND ASSOCIATES, LLC**  
4885 Ward Road, Suite 100 • Wheat Ridge, CO 80033  
Del Norte • Gypsum • Wheat Ridge  
303-293-8107 • www.rgengineers.com

SCENIC VIEW AT PAINT BRUSH HILLS DETENTION FOND MODIFICATIONS  
DETAILS  
Prepared by  
PAINT BRUSH HILLS METROPOLITAN DISTRICT  
EL PASO COUNTY, COLORADO

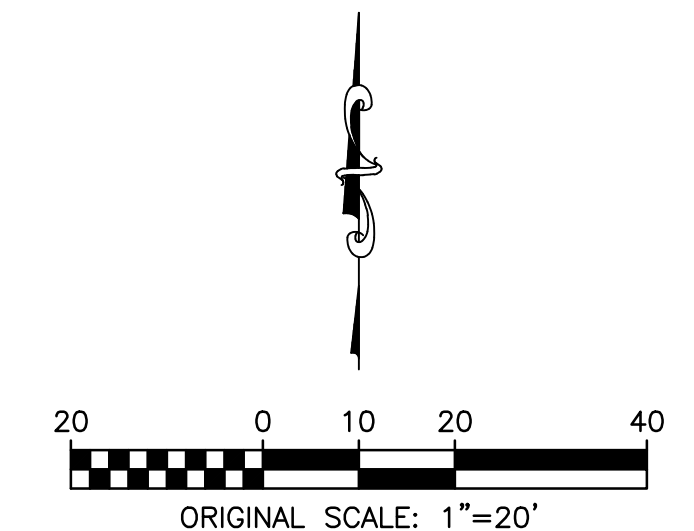
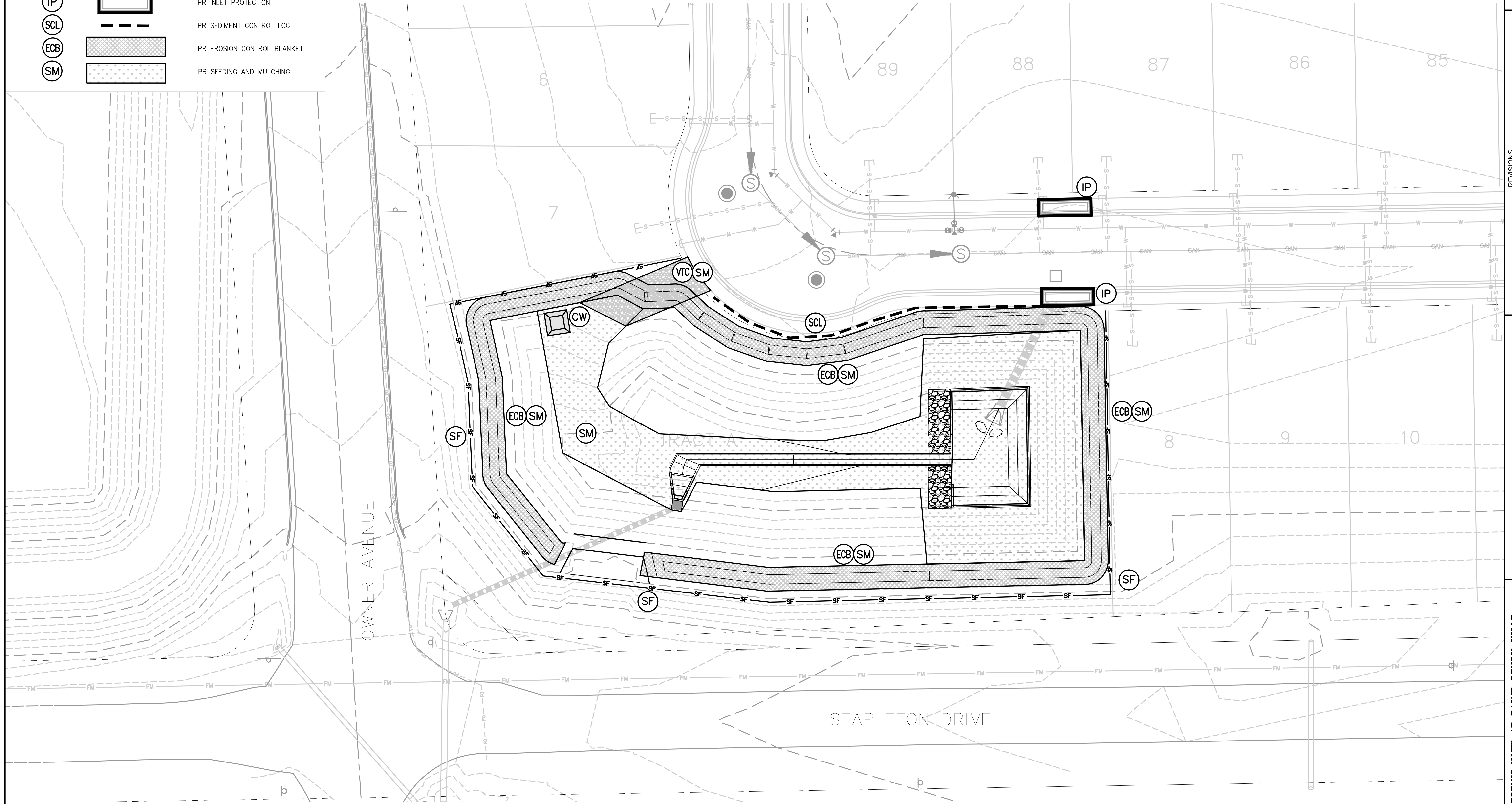
DRAWN BY:	DESIGNED BY:
JGS	GEW
JOB NUMBER:	1070.0022
DATE:	MAY 2022
SCALE:	N.T.S.
DRAWING NAME:	DETAILS
SHEET NO:	5 of 8

S:\1070 - Paint Brush Hills Metropolitan District\1070.0022 - Scenic View Detention Pond\DWG\03 SITE PLAN.dwg, 06 E.C. PLAN, 5/12/2022 11:34:47 AM, DWG To PDF PLOT

EROSION CONTROL LEGEND

-  SF PR SILT FENCE
-  VTC PR VEHICLE TRACKING CONTROL
-  CW PR CONCRETE WASHOUT
-  IP PR INLET PROTECTION
-  SCL PR SEDIMENT CONTROL LOG
-  ECB PR EROSION CONTROL BLANKET
-  SM PR SEEDING AND MULCHING

NOTE:  
1. SEED AND MULCH ALL DISTURBED AREAS.



48 hours before you file, CALL UTILITY NOTIFICATION CENTER OF COLORADO (UNCC) **811**  
Goa,Electric,Telephone,CATV, and Penhandle, Eastern Pipeline, Locations  
**SCALE VERIFICATION**  
BAR IS ONE INCH ON ORIGINAL DRAWING  
IF NOT ONE INCH ON THIS SHEET SCALE ACCORDINGLY

NO.	REVISIONS DESCRIPTION	DATE	BY

**ERG AND ASSOCIATES, LLC**  
4885 Ward Road, Suite 100 • Wheat Ridge, CO 80033  
Del Norte • Gypsum • Wheat Ridge  
303-293-8107 • www.ergengineers.com

SCENIC VIEW AT PAINT BRUSH HILLS  
DETENTION POND MODIFICATIONS  
EROSION CONTROL PLAN  
PAINT BRUSH HILLS METROPOLITAN DISTRICT  
EL PASO COUNTY, COLORADO

DRAWN BY:	DESIGNED BY:
JGS	GEW
JOB NUMBER:	1070.0022
DATE:	MAY 2022
SCALE:	1" = 20'
DRAWING NAME:	EROSION CONTROL
SHEET NO.:	6 of 8



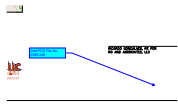




# Construction Drawings\_v1 redlines.pdf Markup Summary

lpackman (5)

---



**Author:** lpackman  
**Subject:** Callout  
**Page Label:** [1] 1 COVER  
**Date:** 6/7/2022 9:21:51 AM  
**Status:**  
**Color:** ■  
**Layer:**  
**Space:**

Add PCD File No. CDR-229



**Author:** lpackman  
**Subject:** Callout  
**Page Label:** [2] 2 GENERAL NOTES  
**Date:** 6/7/2022 9:23:41 AM  
**Status:**  
**Color:** ■  
**Layer:**  
**Space:**

Update to include the entire EPC Construction notes. See document.



**Author:** lpackman  
**Subject:** File Attachment  
**Page Label:** [2] 2 GENERAL NOTES  
**Date:** 6/7/2022 9:24:21 AM  
**Status:**  
**Color:** ■  
**Layer:**  
**Space:**



**Author:** lpackman  
**Subject:** Callout  
**Page Label:** [1] 1 COVER  
**Date:** 6/8/2022 7:21:19 AM  
**Status:**  
**Color:** ■  
**Layer:**  
**Space:**

Remove note.



**Author:** lpackman  
**Subject:** Text Box  
**Page Label:** [1] 1 COVER  
**Date:** 6/9/2022 4:54:42 PM  
**Status:**  
**Color:** ■  
**Layer:**  
**Space:**

Please add the following signature blocks:

"Design Engineer's Statement:

The attached drainage plan and report were prepared under my direction and supervision and are correct to the best of my knowledge and belief. Said drainage report has been prepared according to the criteria established by the County for drainage reports and said report is in conformity with the applicable master plan of the drainage basin. I accept responsibility for any liability caused by any negligent acts, errors or omissions on my part in preparing this report.

---

[Name, P.E. # \_\_\_\_\_ ]  
Date

Owner/Developer's Statement:

I, the owner/developer have read and will comply with all of the requirements specified in this drainage report and plan.

---

[Name, Title]  
Date  
[Business Name]  
[Address]

El Paso County:

Filed in accordance with the requirements of the Drainage Criteria Manual, Volumes 1 and 2, El Paso County Engineering Criteria Manual and Land Development Code as amended.

---

Joshua Palmer, P.E.  
Date  
Interim County Engineer / ECM Administrator

Conditions: