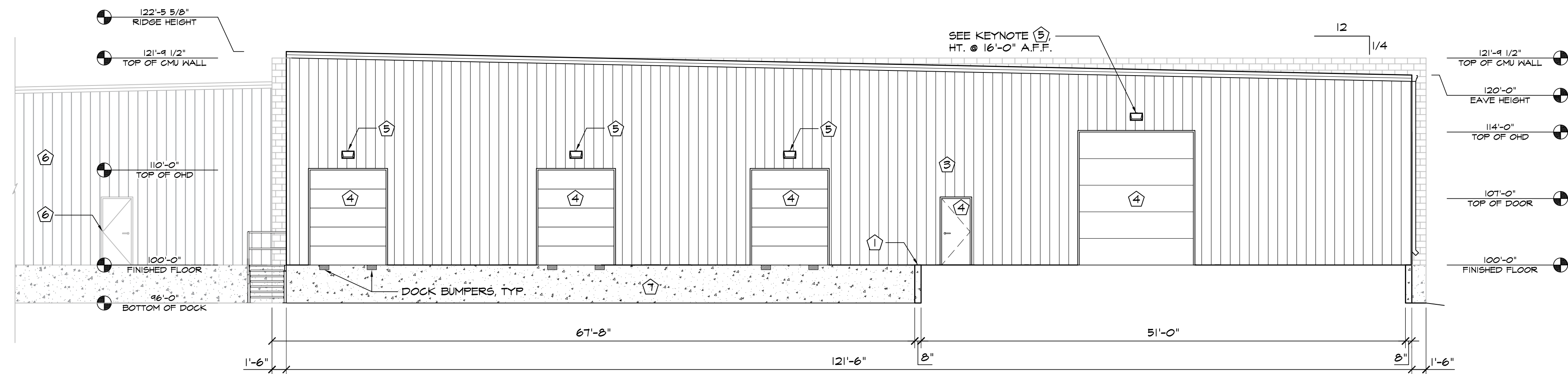
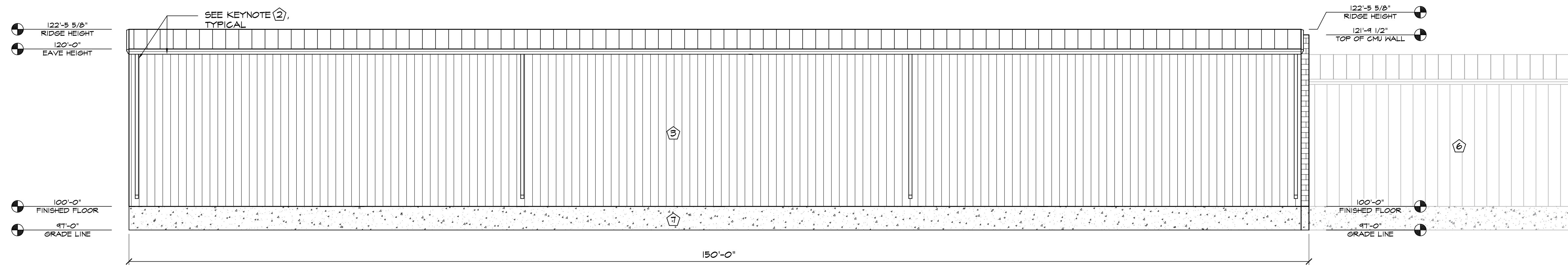


2 WEST ELEVATION  
SCALE: 1/8"=1'-0"



1 SOUTH ELEVATION  
SCALE: 1/8"=1'-0"



3 EAST ELEVATION  
SCALE: 1/8"=1'-0"

ELEVATION KEY NOTES	
①	RETAINING WALL 8" CMU
②	PREFINISHED GUTTER & DOWNSPOUTS BY METAL BUILDING PROVIDER
③	PREFINISHED 26 GA. "PBR" METAL WALL PANELS BY METAL BUILDING PROVIDER
④	SEE SCHEDULES ON "A" SHEETS FOR ALL DOOR INFORMATION
⑤	WALL PACK LIGHT TOP OF LIGHT @ 12'-0" A.F.F., UNLESS NOTED OTHERWISE-SEE ELECT. PLANS
⑥	EXISTING TO REMAIN
⑦	EXPOSED CONCRETE FOUNDATION

**HAMMERS CONSTRUCTION INC.**  
COMMERCIAL GENERAL CONTRACTORS SPECIALIZING IN DESIGN/BUILD  
PRESIDENT: STEVE R. HAMMERS  
VICE PRES: DAVID J. HAMMERS  
1411 WOOLSEY HEIGHTS  
COLORADO SPRINGS, CO 80915  
(719) 570-1589 FAX (719) 570-7008  
www.hammersconstruction.com

THIS DRAWING CONTAINS MATERIAL & INFORMATION WHICH MAY NOT BE REPRODUCED WITHOUT WRITTEN CONSENT OF HAMMERS CONSTRUCTION INC. THESE DRAWINGS ARE INTENDED TO BE USED ONLY BY HAMMERS CONSTRUCTION & ITS REPRESENTATIVES. THESE DRAWINGS HAVE NOT BEEN PREPARED FOR ANY OTHER PURPOSE THAN TO INDICATE THE GENERAL FEATURES AND PLACEMENT OF THE PROPOSED PROJECT. COPYRIGHT © 2018 HAMMERS CONSTRUCTION

**WOODFORD MFG.**  
WOODFORD - ADDITION  
2121 WAYNOKA ROAD  
COLORADO SPRINGS, CO 80915  
EL PASO COUNTY, COLORADO

DATE: JUL 27, 2018  
DRAWN BY: J. CANTERBERRY  
PROJ. MGR: J. BUTLER  
SCALE: SEE PLAN  
APPROVED BY:  
JOB NO: 934

RESUBMITTALS: