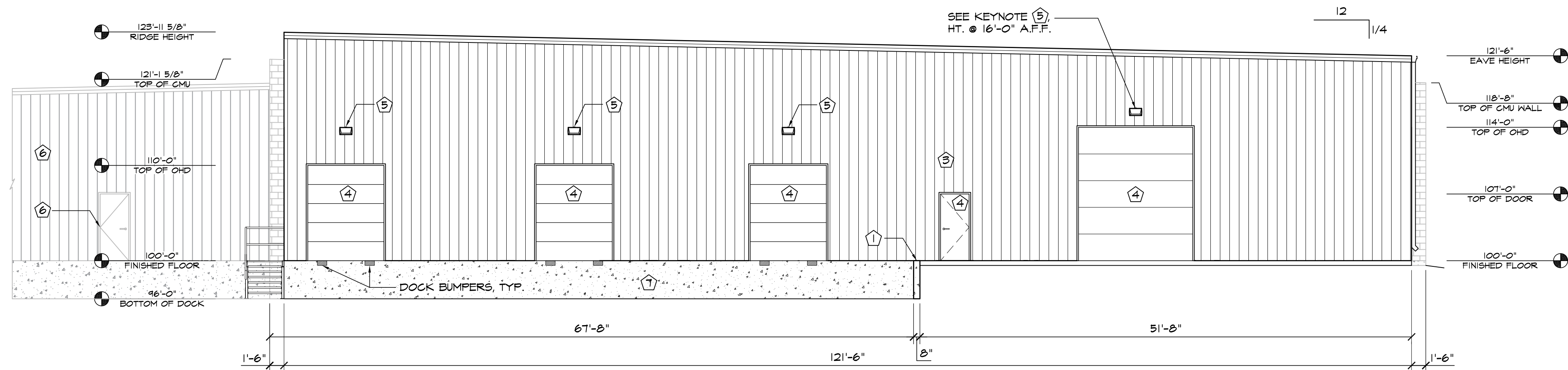
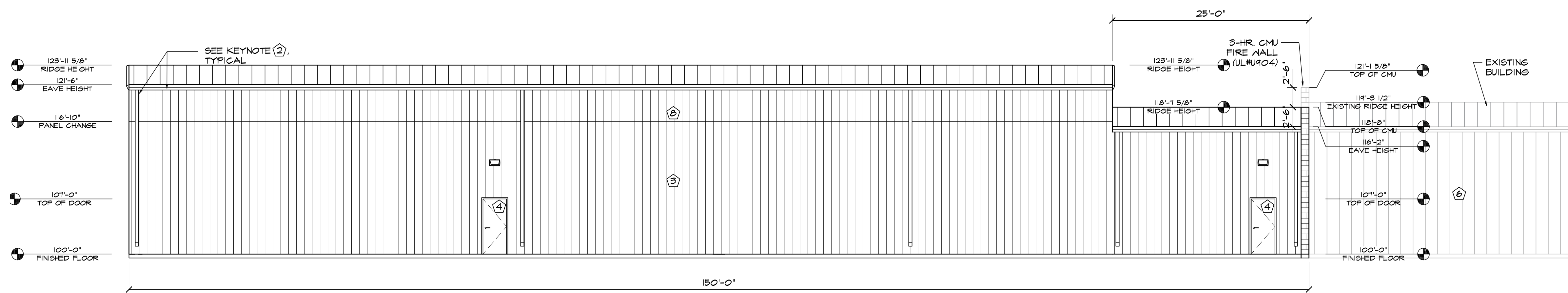


2 WEST ELEVATION
SCALE: 1/8"=1'-0"



1 SOUTH ELEVATION
SCALE: 1/8"=1'-0"



3 EAST ELEVATION
SCALE: 1/8"=1'-0"

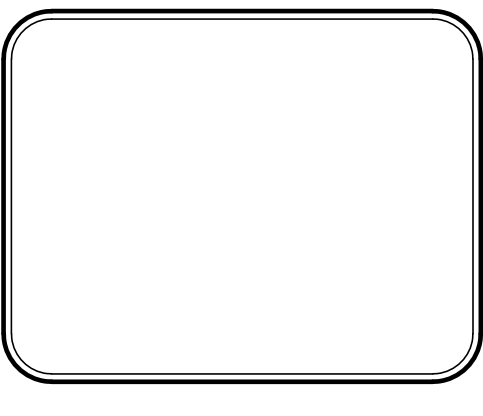
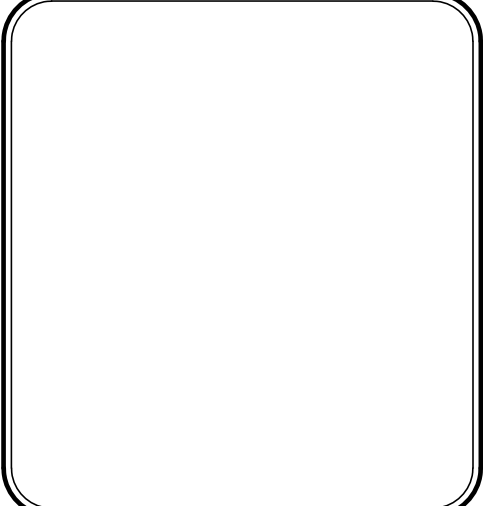
ELEVATION KEY NOTES	
1	RETAINING WALL 8" CMU
2	PREFINISHED GUTTER & DOWNSPOUTS BY METAL BUILDING PROVIDER
3	PREFINISHED 26 GA. "PBR" METAL WALL PANELS BY METAL BUILDING PROVIDER
4	SEE SCHEDULES ON "A" SHEETS FOR ALL DOOR INFORMATION
5	WALL PACK LIGHT TOP OF LIGHT @ 12'-0" A.F.F., UNLESS NOTED OTHERWISE-SEE ELECT. PLANS EXISTING TO REMAIN
6	EXPOSED CONCRETE FOUNDATION
7	PREFINISHED 26 GA. "PBR" TRANSLUCENT WALL PANELS BY METAL BUILDING PROVIDER

EL PASO COUNTY FILE NO. PPR-1831

HAMMERS CONSTRUCTION INC.
COMMERCIAL GENERAL CONTRACTORS SPECIALIZING IN DESIGN/BUILD
PRESIDENT: STEVE R. HAMMERS
VICE PRES: DAVID J. HAMMERS
1411 WOOLSEY HEIGHTS
COLORADO SPRINGS, CO 80915
(719) 570-1589 FAX (719) 570-7008
www.hammersconstruction.com

THIS DRAWING CONTAINS MATERIAL & INFORMATION WHICH MAY NOT BE REPRODUCED WITHOUT WRITTEN CONSENT OF HAMMERS CONSTRUCTION INC. THESE DRAWINGS ARE INTENDED TO BE USED ONLY BY HAMMERS CONSTRUCTION & ITS REPRESENTATIVES. THESE DRAWINGS HAVE NOT BEEN PREPARED FOR ANY OTHER PURPOSE THAN TO INDICATE THE GENERAL FEATURES AND PLACEMENT OF THE PROPOSED PROJECT. COPYRIGHT © 2018 HAMMERS CONSTRUCTION

WOODFORD MFG.
WOODFORD - ADDITION
2121 WAYNOKA ROAD
COLORADO SPRINGS, CO 80915
EL PASO COUNTY, COLORADO



DATE: AUG. 16, 2018
DRAWN BY: J. CANTERBERRY
PROJ. MGR: J. BUTLER
SCALE: SEE PLAN
APPROVED BY:
JOB NO: 10TT

RESUBMITTALS:
9-17-18 COMMENTS 8-23-18