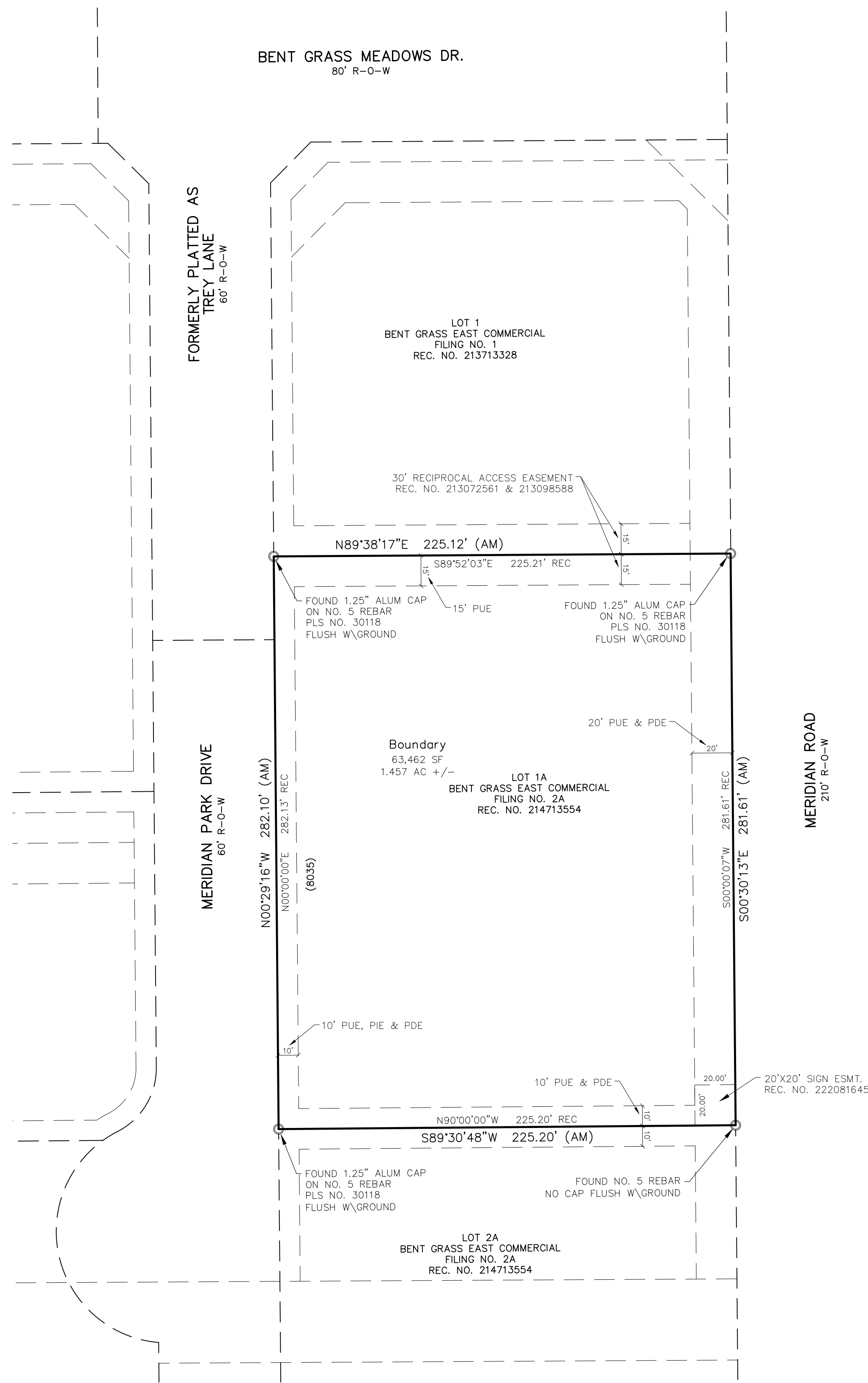


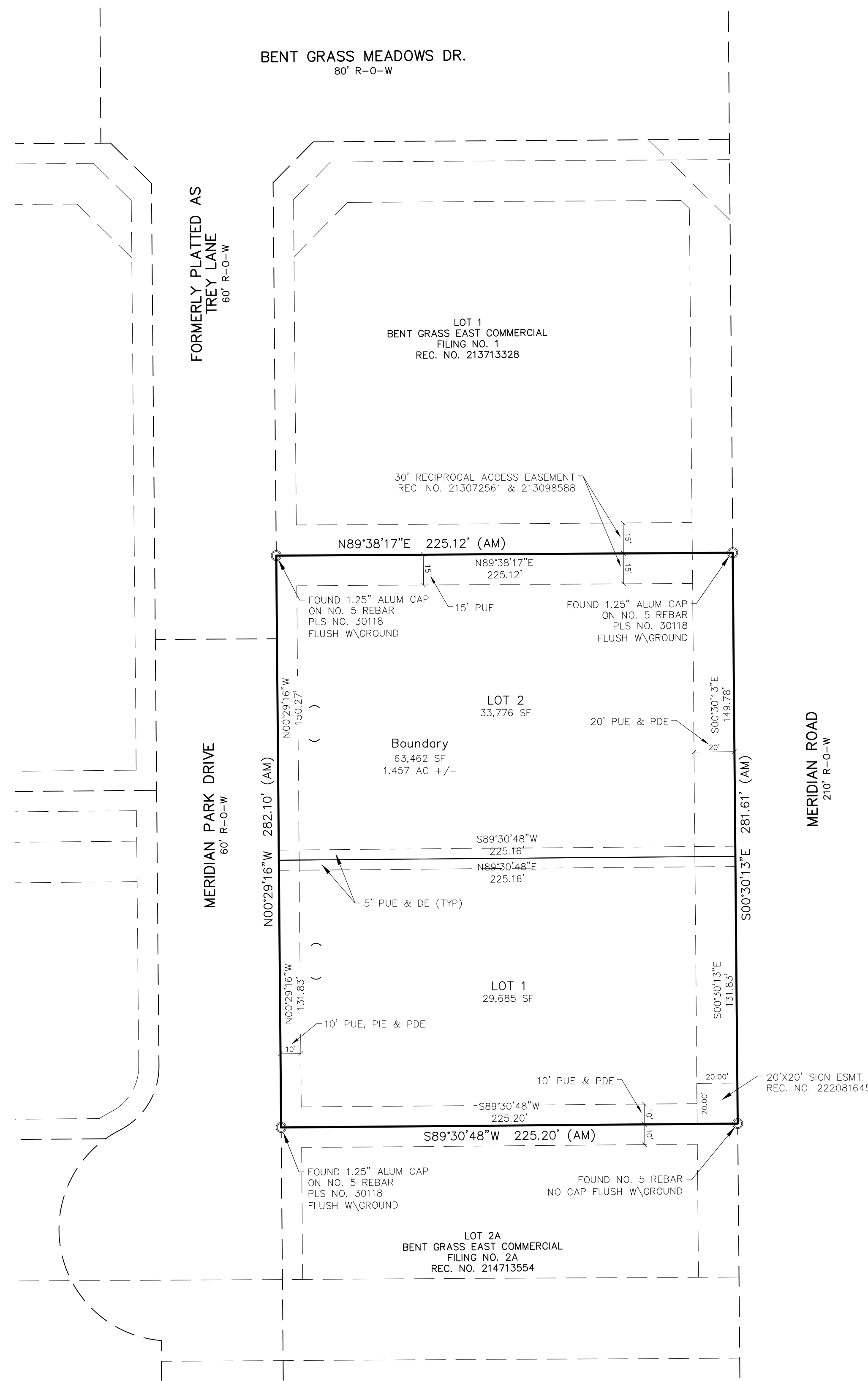
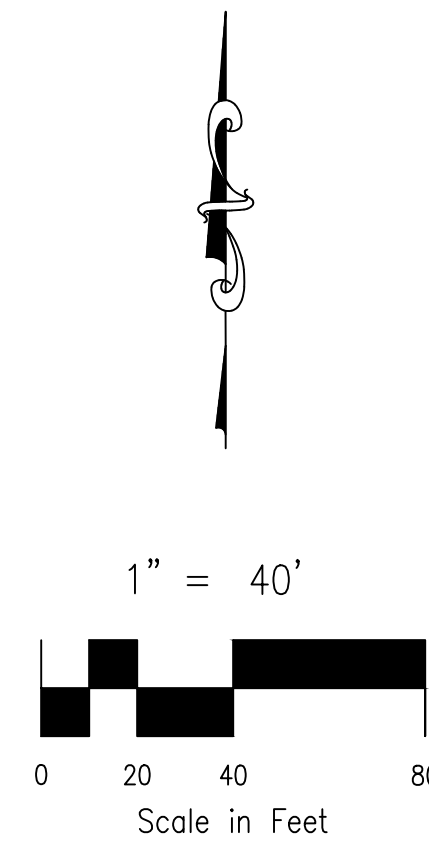
BENT GRASS EAST COMMERCIAL FILING NO. 3

A REPLAT OF LOT 1A "BENT GRASS COMMERCIAL FILING NO. 2A", RECORDED UNDER RECEPTION NO. 214713554 IN THE EL PASO COUNTY, COLORADO RECORDS, BEING A PORTION OF THE NORTHEAST QUARTER OF SECTION 1, T13S, R65W, OF THE 6TH P.M., EL PASO COUNTY, COLORADO



AS PLATTED

MERIDIAN ROAD
210' R-O-W



AS REPLATTED

MERIDIAN ROAD
210' R-O-W

- LEGEND**
- FOUND PROPERTY CORNER AS DESCRIBED
 - R-O-W RIGHT OF WAY
 - DE DRAINAGE EASEMENT
 - PDE PUBLIC DRAINAGE EASEMENT
 - PIE PUBLIC IMPROVEMENT EASEMENT
 - PUE PUBLIC UTILITY EASEMENT

FINAL PLAT
BENT GRASS EAST COMMERCIAL
FILING NO. 3
JOB NO. 70-110
DATE PREPARED: 10/21/2022
DATE REVISED:



212 N. WAHSATCH AVE., STE 305
COLORADO SPRINGS, CO 80903
PHONE: 719.955.5485