



Product Submittal

Project Name: Falcon Meadows

Location: Falcon, CO

Contractor: Frazee

Date: 10/08/2021

Submitted by: Aaron Lowell

Phone: 720-772-0319

All product, materials, and design information provided by Forterra Precast Concepts, LLC is privileged and proprietary to Forterra Precast Concepts, LLC. In consideration of receiving said information the recipient thereof agrees that it and its employees, agents and consultants who may be made privy to said information shall be directed to hold and shall hold said information in the strictest confidence and shall treat it as privileged and proprietary to Forterra Precast Concepts, LLC. Access to said information shall be restricted to those who are required by their duties to be privy to such information.



CONCRETE MANHOLE PRODUCT CERTIFICATION

We hereby certify that the following precast concrete products are manufactured in accordance with the below referenced standard specifications and meet or exceed the minimum physical requirements established by these standards and the project specifications, most recent version.

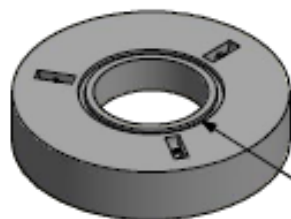
- Precast manholes shall conform to ASTM C478 “Standard Specification for Precast Reinforced Concrete Manhole Sections”
- Steel reinforcing shall conform to ASTM C478. Rebar shall conform to ASTM A615 “Deformed and Plain Carbon-Steel Bars for Concrete Reinforcement” and Welded Wire Reinforcement shall conform to ASTM A1064 “Carbon-Steel Wire and Welded Wire Reinforcement, Plain and Deformed, for Concrete”
- Concrete shall conform to ASTM C478 and cement shall conform to ASTM C150 “Standard Specification for Portland Cement”
- Joints shall use rubber gaskets to conform to ASTM C443 “Joints for Concrete Pipe and Manholes, using Rubber Gaskets” or flexible joint sealant to conform to ASTM C990 “Joints for Concrete Pipe, Manholes, and Precast Box Sections, using Preformed Flexible Joints Sealants”
- Resilient Connectors (if applicable) shall conform to ASTM C923 “Resilient Connectors between Reinforced Concrete Manhole Structures, Pipe, and Laterals”
- Steps (if applicable) shall conform to ASTM C478.
- See attached product sheets and details for additional information.

All product, materials, and design information provided by Forterra Precast Concepts, LLC is privileged and proprietary to Forterra Precast Concepts, LLC. In consideration of receiving said information the recipient thereof agrees that it and its employees, agents and consultants who may be made privy to said information shall be directed to hold and shall hold said information in the strictest confidence and shall treat it as privileged and proprietary to Forterra Precast Concepts, LLC. Access to said information shall be restricted to those who are required by their duties to be privy to such information.

STORM MANHOLES

Ø48" ID MANHOLE COMPONENTS

CONCENTRIC

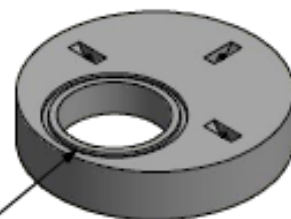


FLAT SLAB TOPS

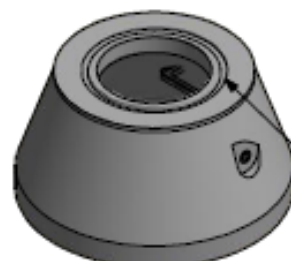
HEIGHT	ACCESS	WEIGHT	BOTTOM JOINT
12-1/4"	24"	1650 LBS	BELL
12-1/4"	30"	1500 LBS	BELL
8"	24"	1500 LBS	BUTT
8"	30"	1350 LBS	BUTT

*INTERLOCK MATES WITH GRADE RINGS

ECCENTRIC



CONCENTRIC

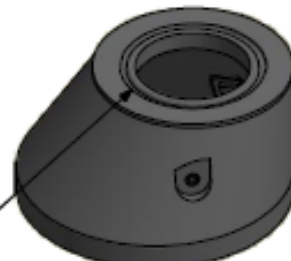


CONES

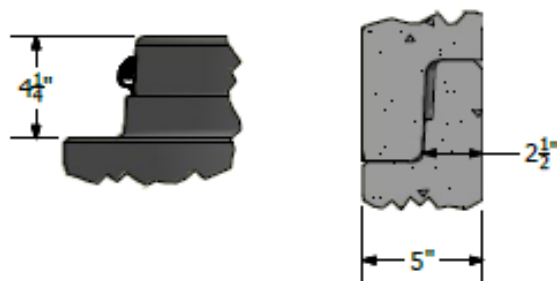
HEIGHT	ACCESS	WEIGHT	OPENING
24"	24"	1900 LBS	ECCENTRIC
30"	24"	2400 LBS	ECCENTRIC
30"	24"	2400 LBS	CONCENTRIC
36"	24"	2800 LBS	ECCENTRIC

*INTERLOCK MATES WITH GRADE RINGS

ECCENTRIC



JOINT DETAIL



RISERS

HEIGHT	WEIGHT
Ø48" X 12"	1000 LBS
Ø48" X 24"	1900 LBS
Ø48" X 36"	2750 LBS
Ø48" X 48"	3600 LBS

BASES

STANDARD BASE SIZES

HEIGHT	BLANK BASE NO INVERT NO HOLES
24"	6200 LBS
27"	6550 LBS
30"	6950 LBS
33"	7300 LBS
36"	7650 LBS
39"	8050 LBS
41"	8300 LBS
44"	8650 LBS
45"	8750 LBS
47"	9000 LBS
48"	9150 LBS
50"	9400 LBS
51"	9500 LBS
54"	9900 LBS

- AVAILABLE WITH MONOLITHIC CAST INVERT CHANNEL
- CUSTOM INVERT CHANNELS AVAILABLE
- CUSTOM HOLE SIZES AVAILABLE
- BASE HEIGHTS AVAILABLE: 24" - 54"
- SANITARY BASES WITH INVERTS ADD ABOUT 2000 LBS



NOTES:

- MANHOLE COMPONENTS MEET ASTM C478 SPECIFICATIONS
- MANHOLE COMPONENTS SUITABLE FOR HS-20 LOADING
- JOINTS MEET ASTM C443
- FLEXIBLE CONNECTORS MEET ASTM C923
- ALL WEIGHTS ARE APPROXIMATE
- CAST IRON RING & COVER AND GRADE RINGS AVAILABLE
- ALL STEPS PROVIDED TO BE MA IN. PS2-PF

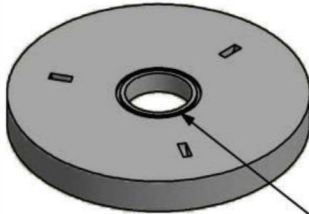


9405 ALTON COURT
HENDERSON, CO 80640
303-853-8053

96" ID MANHOLE COMPONENTS

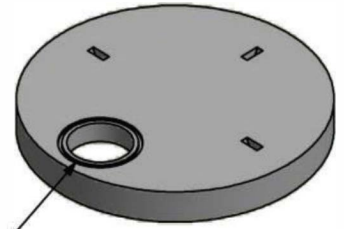
FLAT SLAB TOPS

CONCENTRIC



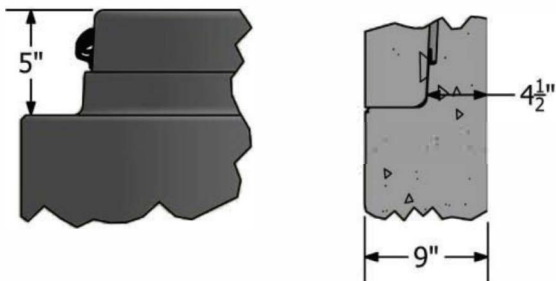
HEIGHT	ACCESS	WEIGHT	BOTTOM JOINT
13"	24"	7100 LBS	BELL
13"	30"	6900 LBS	BELL
13"	36"	6700 LBS	BELL
8"	24"	6800 LBS	BUTT
8"	30"	6600 LBS	BUTT
8"	36"	6400 LBS	BUTT

ECCENTRIC



*INTERLOCK MATES WITH GRADE RINGS

JOINT DETAIL



RISERS

HEIGHT	WEIGHT
Ø96" X 12"	3050 LBS
Ø96" X 24"	6150 LBS
Ø96" X 36"	9250 LBS
Ø96" X 48"	12350 LBS
Ø96" X 60"	15450 LBS
Ø96" X 72"	18550 LBS
Ø96" X 84"	21650 LBS
Ø96" X 96"	24750 LBS

STANDARD BASE SIZES

HEIGHT	WEIGHT WITH NO INVERT
36"	16700 LBS
48"	19800 LBS
60"	22900 LBS

BASES



NOTES:

- MANHOLE COMPONENTS MEET ASTM C478 SPECIFICATIONS
- MANHOLE COMPONENTS SUITABLE FOR HS-20 LOADING
- JOINTS MEET ASTM C443
- ALL WEIGHTS ARE APPROXIMATE
- CAST IRON RING & COVER AND GRADE RINGS AVAILABLE
- ALL STEPS PROVIDED TO BE MA IND. PS2-PF



FORTERRA™

9405 ALTON COURT
HENDERSON, CO 80640
303-853-8053

GRADE RING COMPONENTS

INTERLOCKING



24" ID GRADE RINGS

HEIGHT	WEIGHT
2"	80 LBS
3"	120 LBS
4"	160 LBS
6"	240 LBS

- AVAILABLE WITH OR WITHOUT LOCKING GROOVE

FLAT JOINT



30" ID GRADE RINGS

HEIGHT	WEIGHT
2"	95 LBS
3"	140 LBS
4"	190 LBS
6"	285 LBS

FLAT JOINT



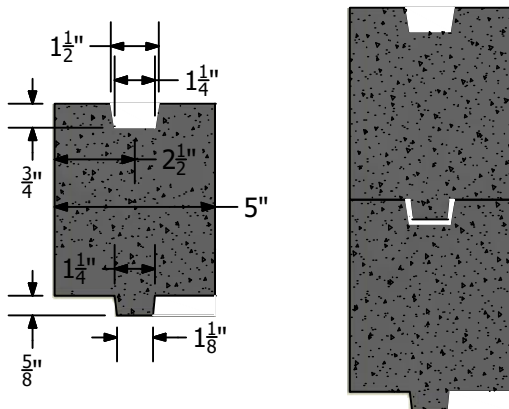
36" ID GRADE RINGS

HEIGHT	WEIGHT
2"	110 LBS
3"	165 LBS
4"	220 LBS
6"	335 LBS
12"	670 LBS

FLAT JOINT



INTERLOCKING DETAIL



SEALING OPTIONS

1. BUTYL SEALANT
2. TROWELABLE BUTYL SEALANT
3. MORTAR
4. NO SEALANT APPLIED



NOTES:

- GRADE RINGS MEET ASTM C478
- ALL WEIGHTS ARE APPROXIMATE
- ALL GRADE RINGS HAVE 5" WALL THICKNESS
- GRADE RINGS MATE WITH OTHER GRADE RINGS, CONES, AND FLAT SLAB TOPS



9405 ALTON COURT
HENDERSON, CO 80640
303-853-8053



TSS Series

Tylox® SuperSeal™ Pre-lubricated Profile Gaskets for Single Offset Joints on Concrete Manhole

***Say good-bye to the lube bucket and brush.
Say hello to fast, clean, simple installation.***

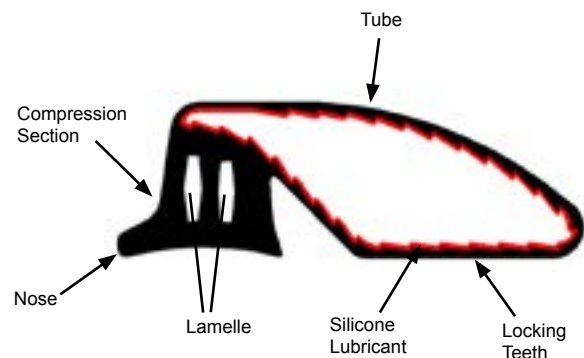
The unique design of the Tylox® SuperSeal™ manhole gasket is bringing a cost-saving revolution to the field of concrete manhole gasketing and installation.

- ***Requires no field lubrication.*** The Tylox® SuperSeal™ gasket has a layer of silicone lubricant installed on the inner surface of the tube during the manufacturing process; saving you time and money on the job-site.
- ***Elimination of unsafe installation practices.*** Since the Tylox® SuperSeal™ manhole gasket requires no lubrication, the unsafe practice of standing beneath a suspended riser section in order to lubricate the bell I.D. is no longer required.
- ***Self-Contained Lubricant.*** Sealed within the tube, the lubricant is impervious to mud, dirt and debris. If you drop it in the trench, simply wipe the gasket surface clean and you're ready to install. No special handling is required.
- ***No equalization required.*** Due to the reduced gasket stretch requirement of the unique lamelle/rolling-tube design, the Tylox® SuperSeal™ gasket requires no equalization after installation. A quick and easy installation means you save even more time and money.
- ***No gasket "roll" or "twist".*** Another benefit of the unique lamelle/rolling-tube design is the drastic reduction in insertion forces, virtually eliminating the gasket "roll" and "twist" associated with o-ring and standard profile gaskets.
- ***Self-Centering.*** The manhole bell is self-centered on the spigot due to the forces generated as the tube rolls into the annular space during the homing process.



Tylox® SuperSeal™ gaskets are available for all common combinations of annular and total annular spaces, and can be manufactured to suit any manhole size.

Tylox® SuperSeal™ manhole gaskets are available in a variety of rubber compounds, to meet or exceed the material requirements of ASTM C443, ASTM C1619, California Greenbook, and CSA A-257.3.



***Making Infrastructure Watertight Today
for a Greener, Sustainable Tomorrow***

Available Models					
Model	Body Height	Body Width	Total Width	To Suit * Annular Space	
				Total	Small
165	0.682	0.791	1.780	0.446	0.146
166**	0.680	0.780	1.615	0.446	0.094
170	0.682	0.808	1.290	0.446	0.126
175	0.697	0.833	1.398	0.446	0.146
176**	0.735	0.825	1.520	0.446	0.094
200L	0.885	1.049	2.549	0.500	0.175
225	0.914	1.085	2.787	0.525	0.175
226**	0.850	1.048	2.318	0.525	0.094
* For informational purposes only. Consult your Hamilton Kent representative for sizing to suit your specific joint details.					
** These models do not have locking teeth.					

Materials and Identification

Tylox® SuperSeal™ manhole gaskets are manufactured from a variety of synthetic rubber compounds to meet the material requirements of ASTM C443 and C1619, and CSA A257.3. The applicable specification(s) and usage mode for a particular gasket are identified by a colored stripe around the periphery of the gasket:

Standard

ASTM C443, C1619 Class C and CSA A257.3	White Stripe
California Greenbook	Green Stripe

Oil-Resistant

ASTM C443, C1619 Class D and CSA A257.3 - Nitrile rubber	Orange Stripe
ASTM C443, C1619 Class D and CSA A257.3 - Neoprene rubber	Yellow Stripe

The above listing covers the standard, North American, specifications. Gaskets materials are available to meet many other specifications. Please consult your Hamilton Kent representative regarding materials to meet your particular specifications.

Pressure Rating

Tylox® SuperSeal™ gaskets are suitable for use in systems with up to 13 psig (30 ft Head) pressure requirements.

Higher head pressures have been obtained with certain

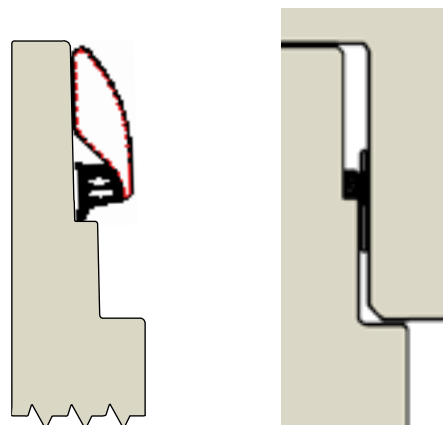
joint designs. Please consult your local Hamilton Kent Representative for gasket selection to meet your specific requirements.

Installation

1. Ensure that bell and spigot are free from cracks, chips, or other defects.
2. Brush loose dirt, debris and foreign material from the inside surface of the bell, the spigot and the gasket.
3. Stretch gasket around the spigot, with the nose against the step, and the tube laying flat against the spigot.
4. Do not lubricate the gasket or joint as this could adversely affect the performance of the gasket and the joint.
5. Align the spigot with the bell, ensuring that the gasket is in contact with the bell around the complete periphery, then allow the manhole section to home under its own weight.

The homing process will cause the lubricated tube to roll over the compression section, allowing the manhole section to slide downward.

Once fully homed, the compression section seals the total annular space and the rolling tube comes to rest within the small annular space, acting as a cushion against side loads.



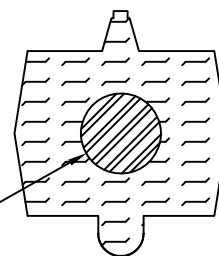
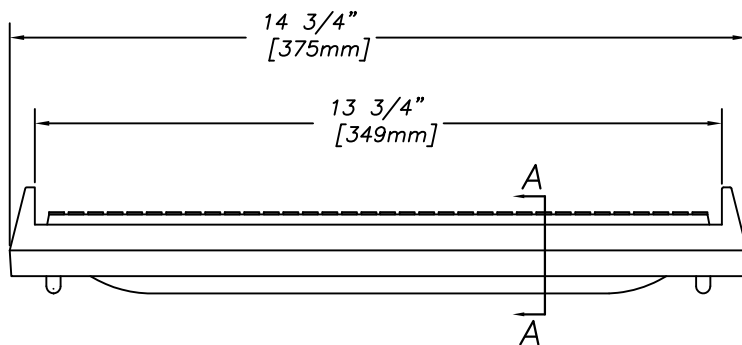
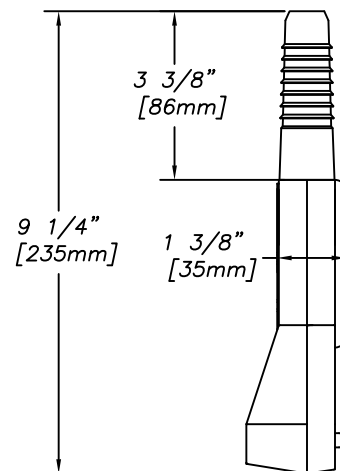
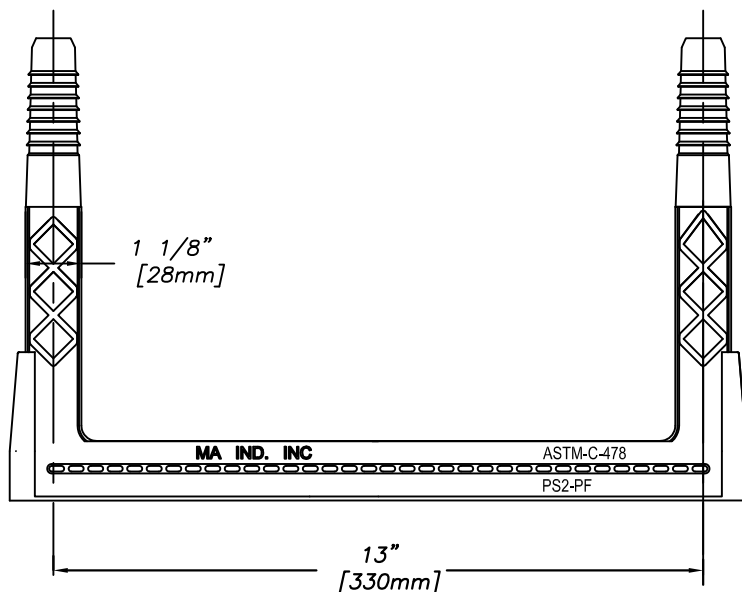
TEL: (800) 268 8479

FAX: (888) 674 6960

WEB: www.hamiltonkent.com

E-MAIL: sales@hamiltonkent.com

Lit_TSS_Manhole_English_R7

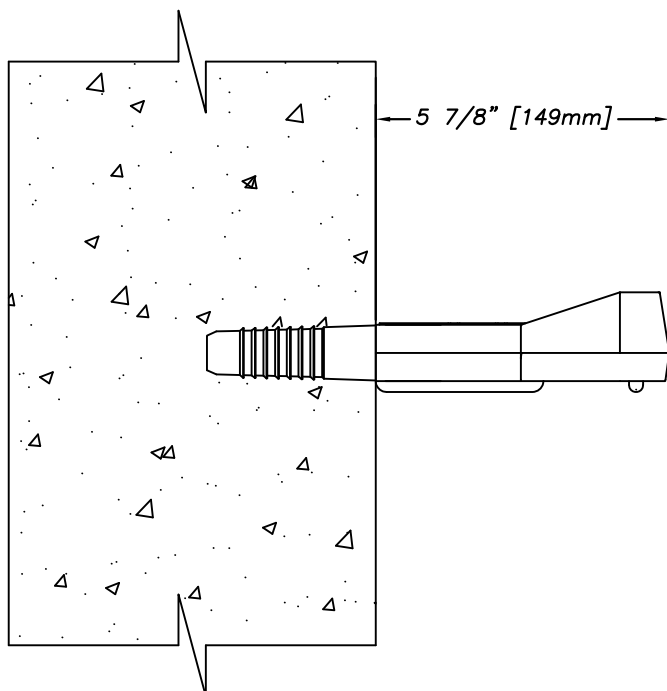


Copolymer Polypropylene Plastic

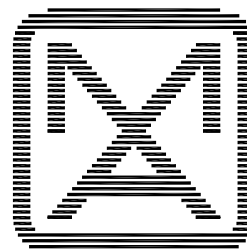
13mm
1/2"

GRADE 60 STEEL REINFORCEMENT

SECTION-A

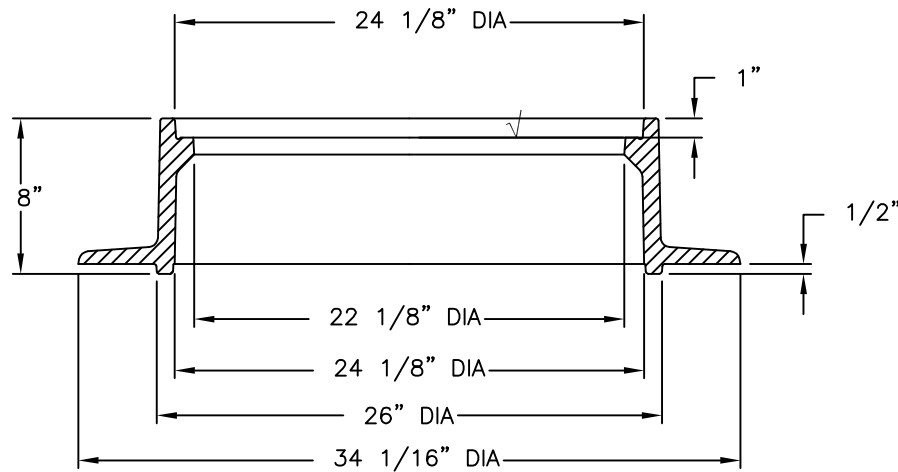
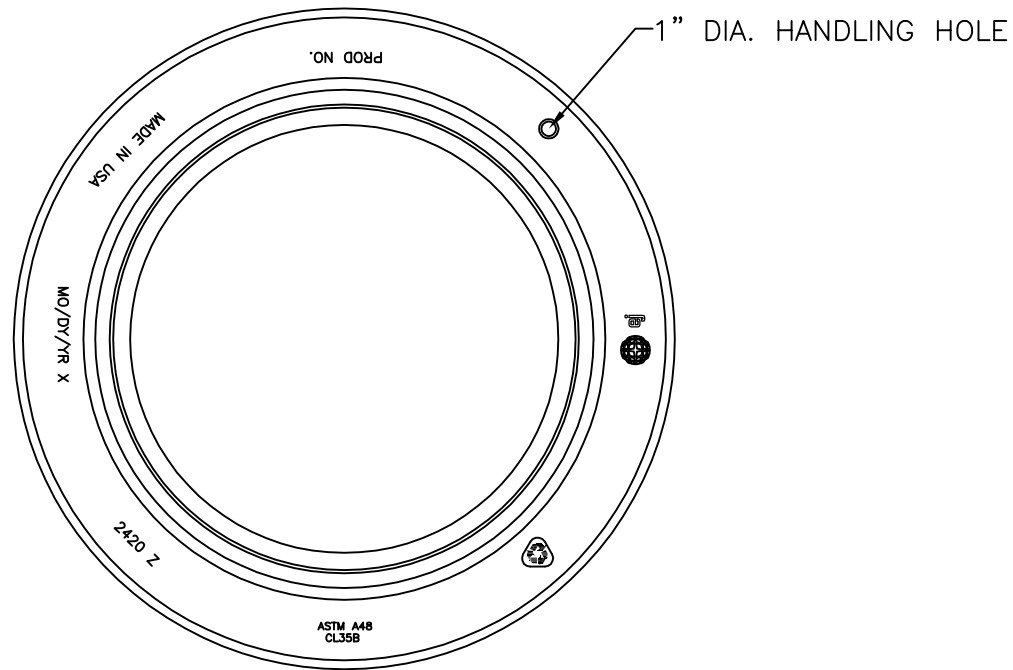


**MEETS: ASTM C-478
ASTM D-4101
ASTM A-615
AASHTO M-199**



M . A . I N D U S T R I E S , I N C .

2420Z Frame



SECTION OF FRAME

Product Number

00242011

Design Features

- Materials
 - Gray Iron (CL35B)
- Design Load
 - Heavy Duty
- Open Area
 - n/a
- Coating
 - Undipped
- ✓ Designates Machined Surface
- Estimated Weight: 236 lbs.

Certification

- ASTM A48
-
-
- Country of Origin: USA

Drawing Revision

07/17/2001 Designer: JIJ
5/30/2017 Revised By: CSF

Disclaimer

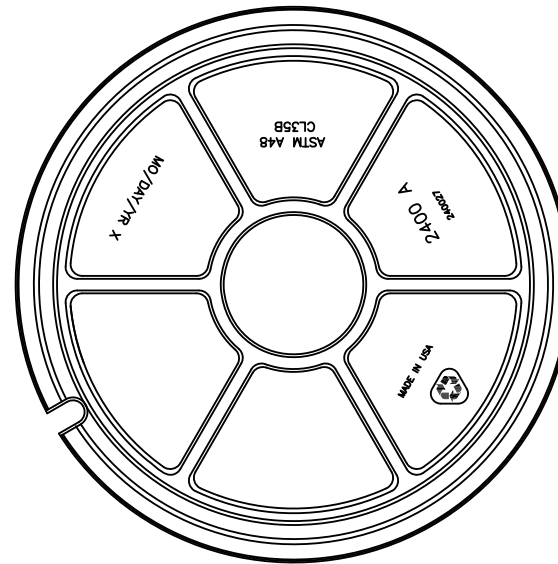
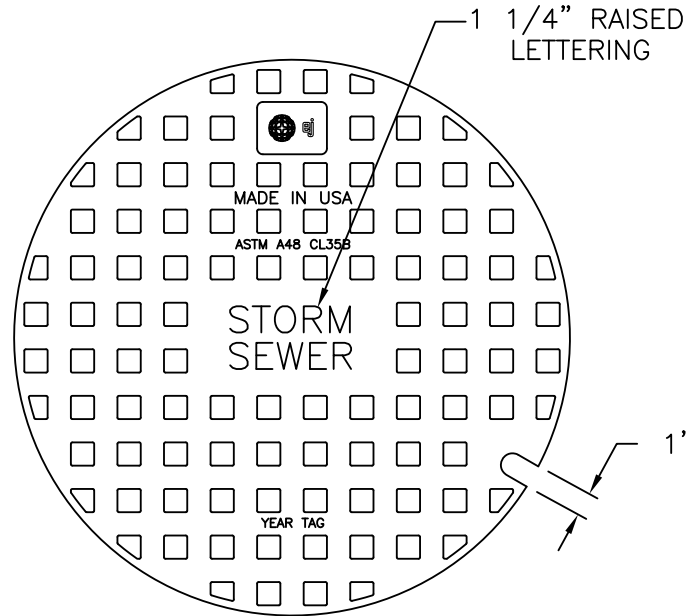
Weights (lbs./kg) dimensions (inches/mm) and drawings provided for your guidance. We reserve the right to modify specifications without prior notice.

CONFIDENTIAL: This drawing is the property of EJ GROUP, Inc., and embodies confidential information, registered marks, patents, trade secret information, and/or know how that is the property of EJ GROUP, Inc. Copyright © 2015 EJ GROUP, Inc. All rights reserved.

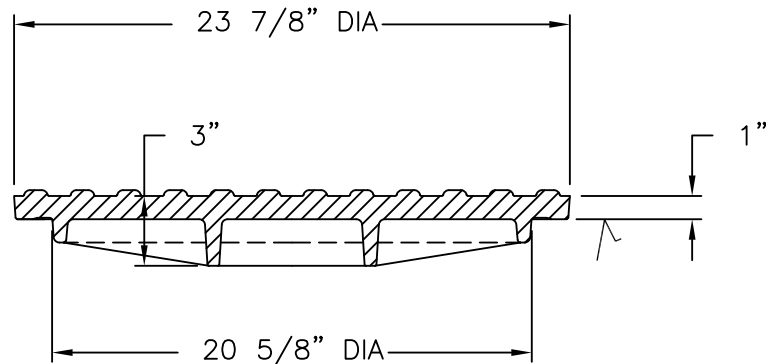
Contact

800 626 4653
ejco.com

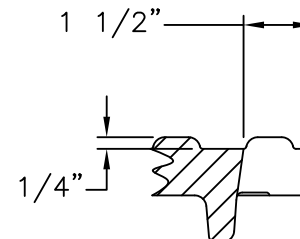
2400A Cover



COVER BACK



SECTION



PICKSLOT DETAIL

Product Number

00240027

Design Features

- Materials
Gray Iron (CL35B)
- Design Load
Heavy Duty
- Open Area
n/a
- Coating
Undipped
- ✓ Designates Machined Surface

Certification

- ASTM A48
-
-
- Country of Origin: USA

Drawing Revision

03/10/2001 Designer: JIJ
09/16/2013 Revised By: DVD

Disclaimer

Weights (lbs./kg) dimensions (inches/mm) and drawings provided for your guidance. We reserve the right to modify specifications without prior notice.

CONFIDENTIAL: This drawing is the property of EJ GROUP, Inc., and embodies confidential information, registered marks, patents, trade secret information, and/or know how that is the property of EJ GROUP, Inc. Copyright © 2012 EJ GROUP, Inc. All rights reserved.

Contact

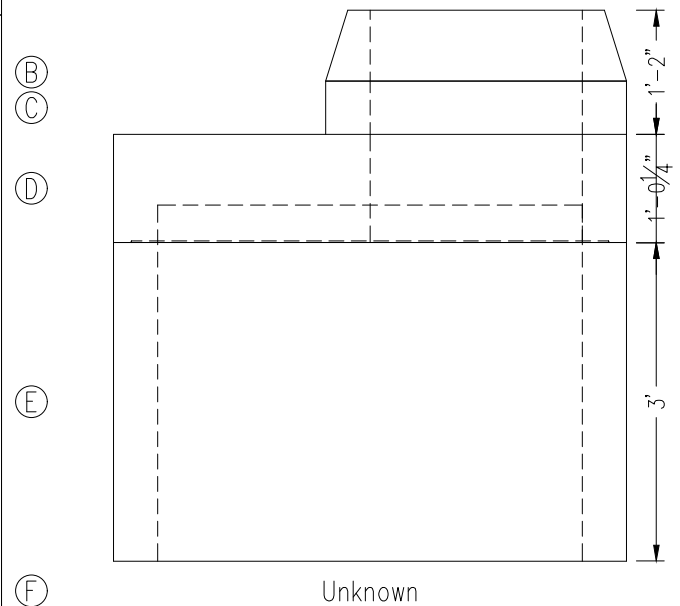
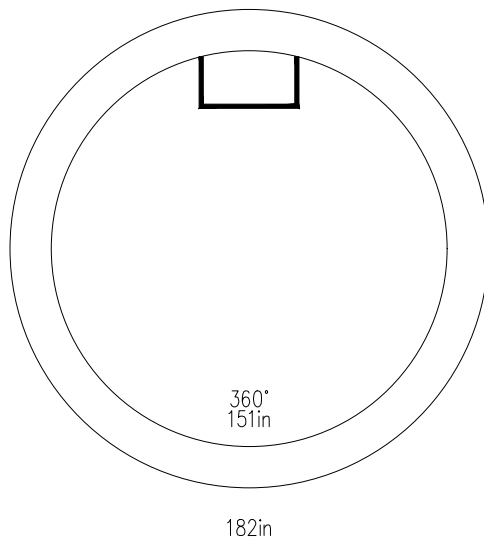
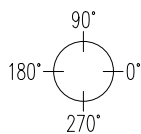
800 626 4653
ejco.com

Design Build Height			Stack Build Height			Elevation
Top of Casting	+	6946.72	Casting	+	.67	
Outlet Invert	-	6941.52	Adjusting Ring	+	.50	
Wall Thk/Inv Adj	+	.00	Cover Slab	+	1.02	
Design Height	=	5.20	Riser	+	3.00	
Casting/Adj Ring	-	1.17	Base Thickness	+	.00	
Manhole Hgt	=	4.03	Outside Height	=	5.19	

Opening Schedule (HF=Hole Former, DO=Dig Out)

ID	Pipe Size	Invert	Invert Up	Pipe O.D.	Opening/Connector	Top of Hole Up	C-Line Hole Up	Btm of Hole Up
----	-----------	--------	-----------	-----------	-------------------	----------------	----------------	----------------

Plan View



Notes

RISER MATERIAL ABOVE BOX BASE

Steps: 12" On Center 90°

Item List

ID	Description	Product No	Hgt	Qty	Weight
A	EJ 2400 Cover Storm Knobby	9000100000659	.00	1	148
B	EJ 2420Z Ring 8"	9000100000947	.67	1	0
C	24x6 Interlock Adjusting Ring	909010024060A	.50	1	240
D	48x8 Cvr Tp2B 24H Ecc PHS	22048082V0210	1.02	1	1,521
E	48x3.0 BBL FB PHS S	204801V5100000030	3.00	1	2,610
F	Unknown		.00	1	0
Total Weight (lbs)					4,519

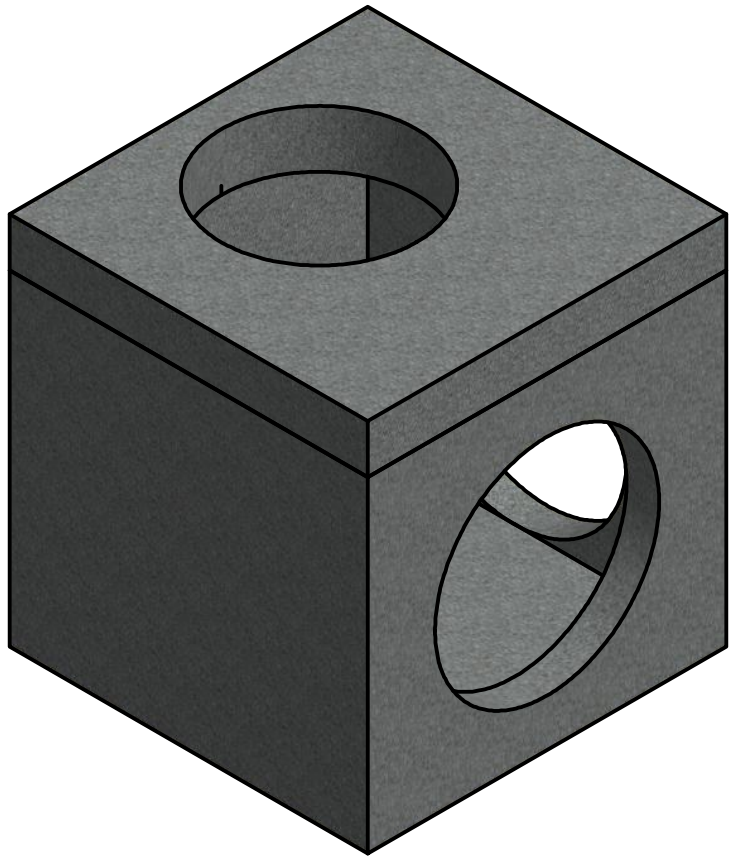
Misc. Items

Description	Qty
Gasket PHS 48 inch SSMH	1
Joint Seal CS102 1.5X10	6

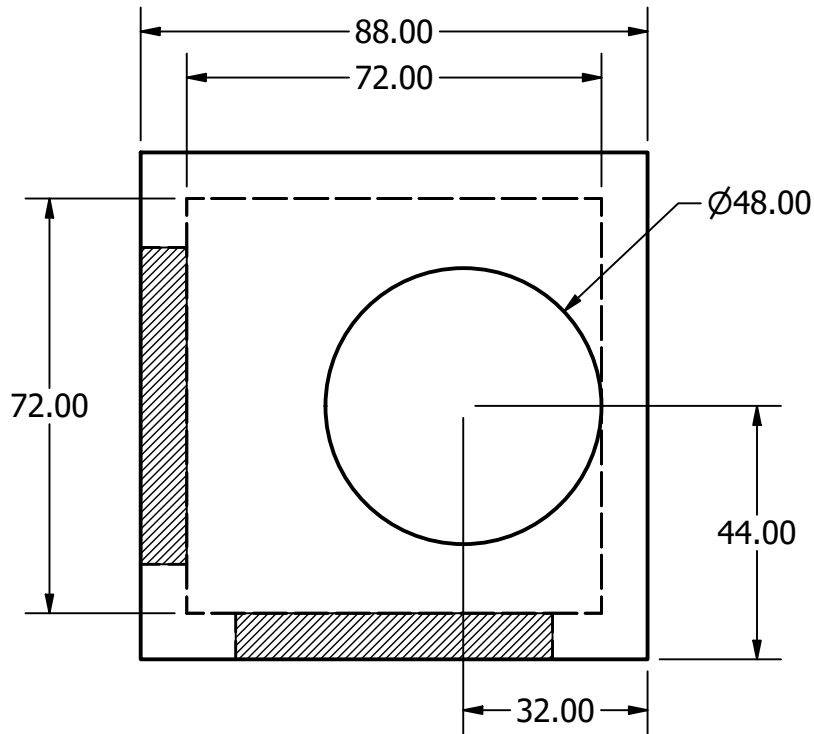
Production Use

Mfg. Date:	
Ship Date:	
Frame/Ring:	
Grate/Cover:	
PREPOUR:	
POSTPOUR:	

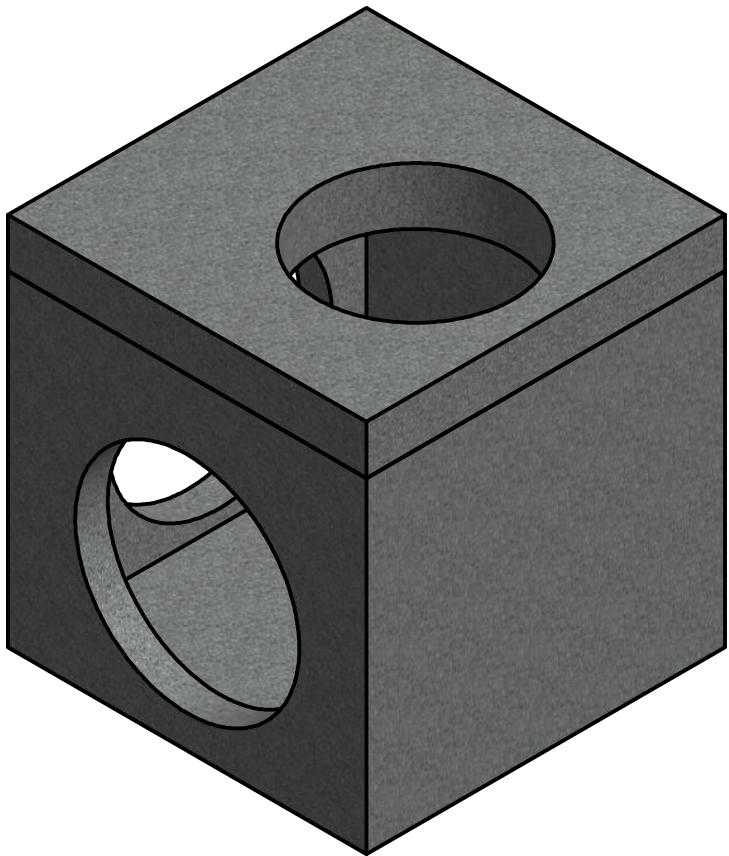
\\10.224.97.167\precast_data\Data\Engineering - Manholes\Projects\Fraze\Falcon Meadows\MH02\Assembly1 DRAWING.dwg



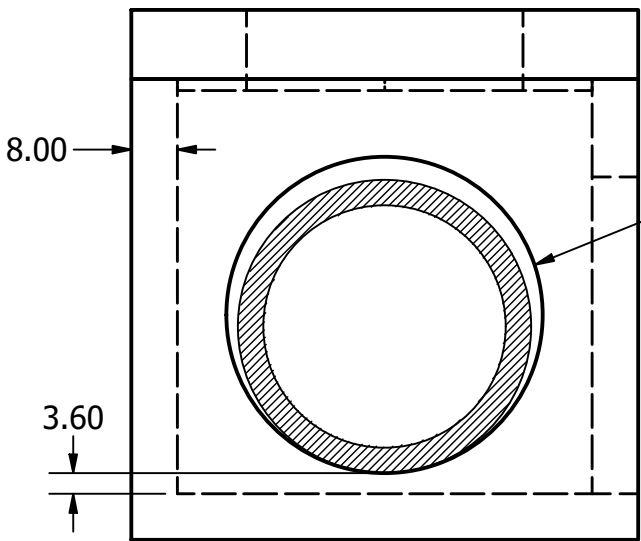
ISO - BACK/LEFT



PLAN



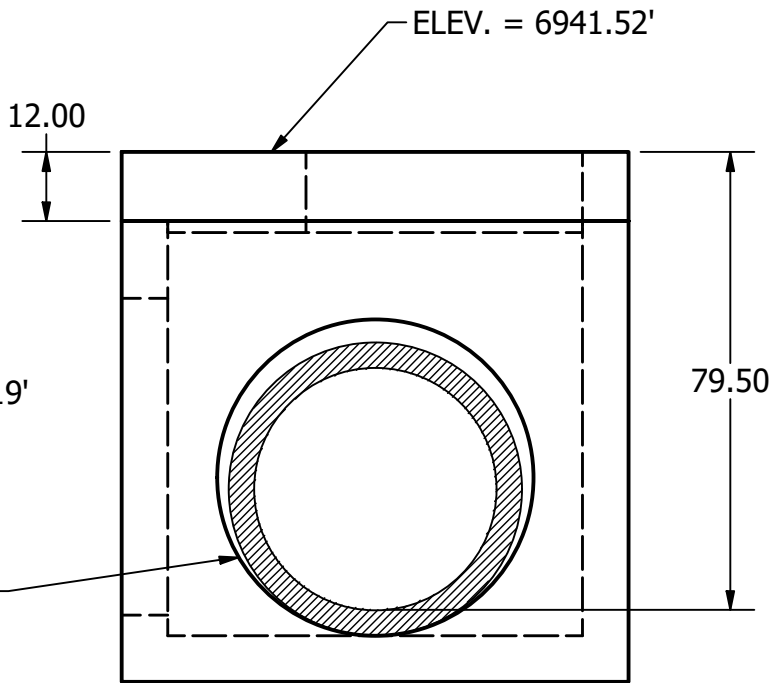
ISO - FRONT/RIGHT



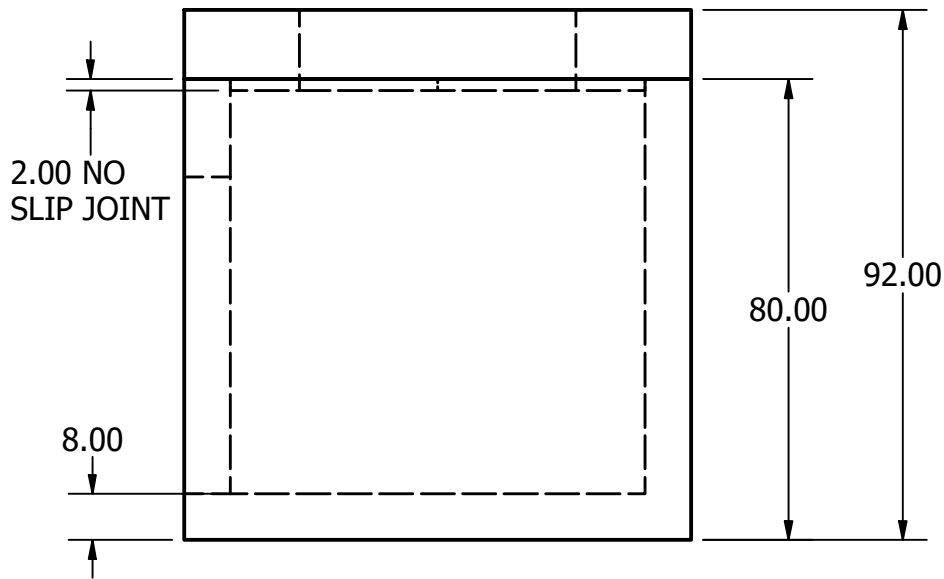
LEFT

Ø55" BLOCKOUT
FOR 42" RCP
INV. IN = 6935.19'

Ø55" BLOCKOUT
FOR 42" RCP
INV. OUT = 6934.89'



FRONT



RIGHT

- NOTES:
1. FOR RECTANGULAR STRUCTURES WE FOLLOW ASTM C913
 2. CONCRETE STRENGTH: 5,000 PSI
 3. ESTIMATED WEIGHT LID: 6,700 LBS
 4. ESTIMATED WEIGHT BASE: 18,100 LBS
 5. STEPS: MA INDUSTRIES PS2-PF @ 12" O.C.
 6. LIFTING: CTS E-LIFT UTILITY ANCHORS - 512G x 4 EACH PIECE
 7. REBAR TYPE: BLACK



FORTERRA™
9455 BOSTON COURT
HENDERSON, CO 80640
303-853-8053

THIS BAR IS ONE INCH ON ORIGINAL DRAWING
0 1"
IF THIS BAR IS NOT ONE INCH ADJUST SCALE

DRAWN BY
TKlar
SCALE
0.03 : 1

DWG NO
Assembly1 DRAWING
DATE
10/07/2021

REV
FORTERRA PROJECT NO.
7021365MH1

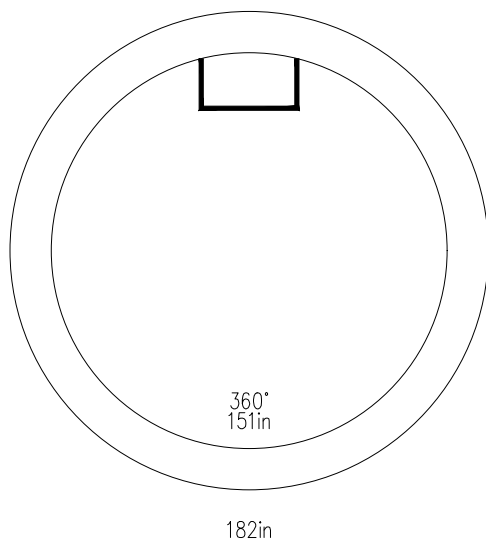
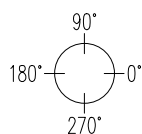
FRAZEE
FALCON MEADOWS

STM-MH02
6' x 6' BOX BASE

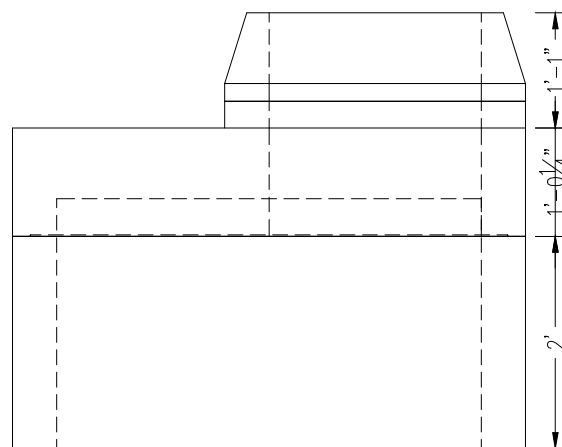
Design Build Height			Stack Build Height			Elevation			Station: 1+56.50 Center		
Top of Casting	+	6948.02	Casting	+	.67						
Outlet Invert	-	6943.93	Adjusting Ring	+	.42						
Wall Thk/Inv Adj	+	.00	Cover Slab	+	1.02						
Design Height	=	4.09	Riser	+	2.00						
Casting/Adj Ring	-	1.08	Base Thickness	+	.00						
Manhole Hgt	=	3.01	Outside Height	=	4.10						

Opening Schedule								(HF=Hole Former, DO=Dig Out)			
ID	Pipe Size	Invert	Invert Up	Pipe O.D.	Opening/Connector	Top of Hole Up	C-Line Hole Up	Btm of Hole Up			

Plan View



ⓑ
ⓒ
ⓓ
ⓔ
ⓕ



Unknown

Notes

RISER MATERIAL ABOVE BOX BASE

Steps: 12" On Center 90°

Item List

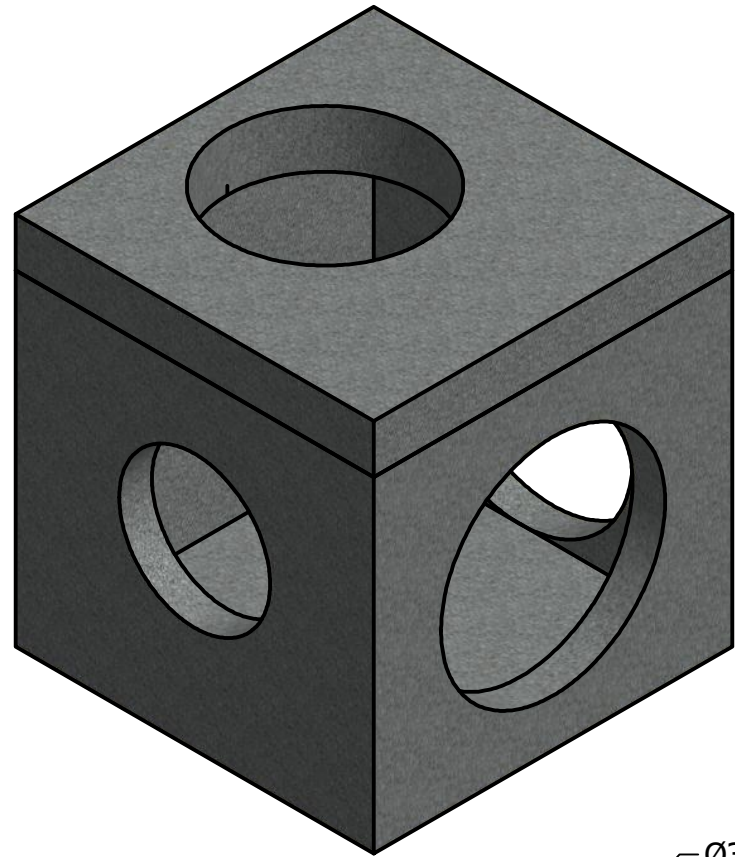
ID	Description	Product No	Hgt	Qty	Weight
A	EJ 2400 Cover Storm Knobby	9000100000659	.00	1	148
B	EJ 2420Z Ring 8"	9000100000947	.67	1	0
C	24x2 Interlock Adjusting Ring	909010024020A	.17	1	80
C	24x3 Interlock Adjusting Ring	909010024030A	.25	1	120
D	48x8 Cvr Tp2B 24H Ecc PHS	22048082V0210	1.02	1	1,521
E	48x2.0 BBL FB PHS S	204801V5100000020	2.00	1	1,740
F	Unknown		.00	1	0
Total Weight (lbs)					3,609

Misc. Items

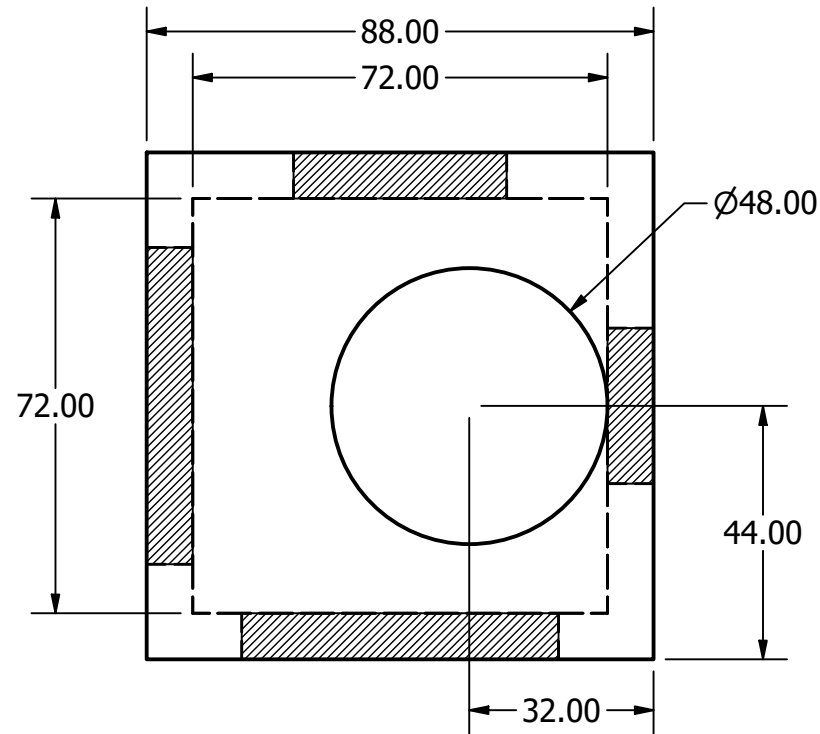
Description	Qty
Gasket PHS 48 inch SSMH	1
Joint Seal CS102 1.5X10	6

Production Use

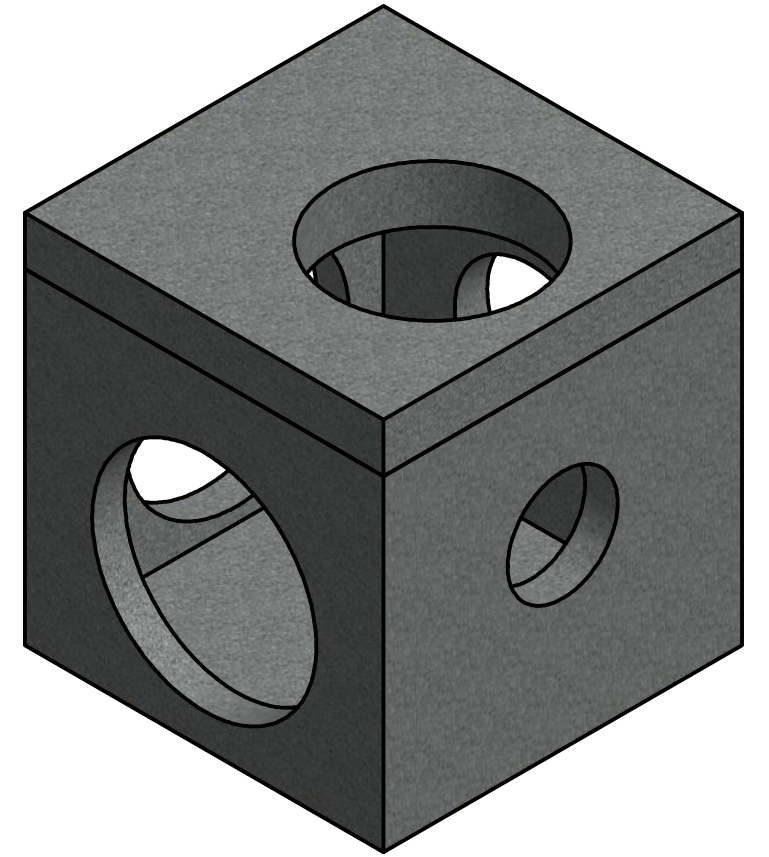
Mfg. Date:	
Ship Date:	
Frame/Ring:	
Grate/Cover:	
PREPOUR:	
POSTPOUR:	



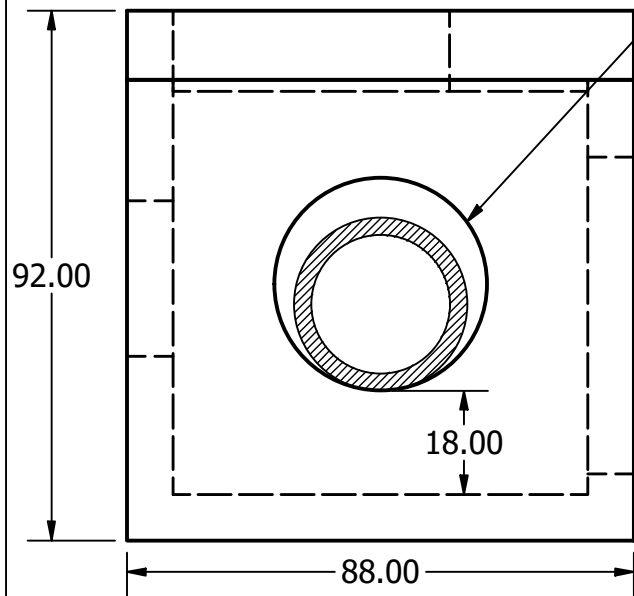
ISO - BACK/LEFT



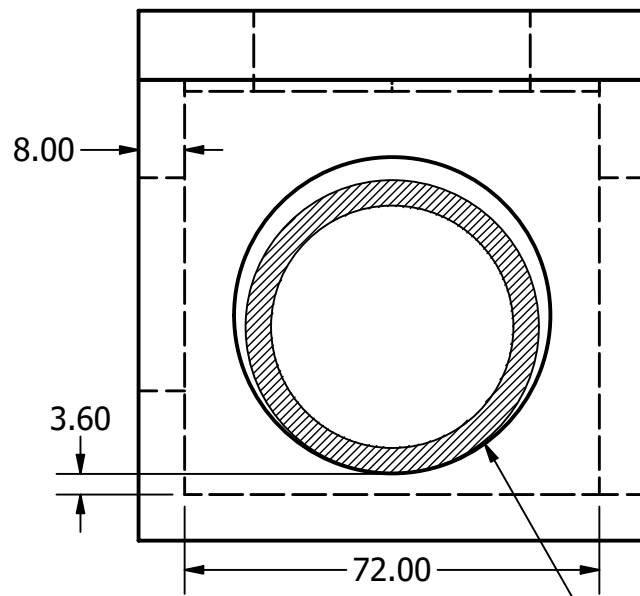
PLAN



ISO - FRONT/RIGHT

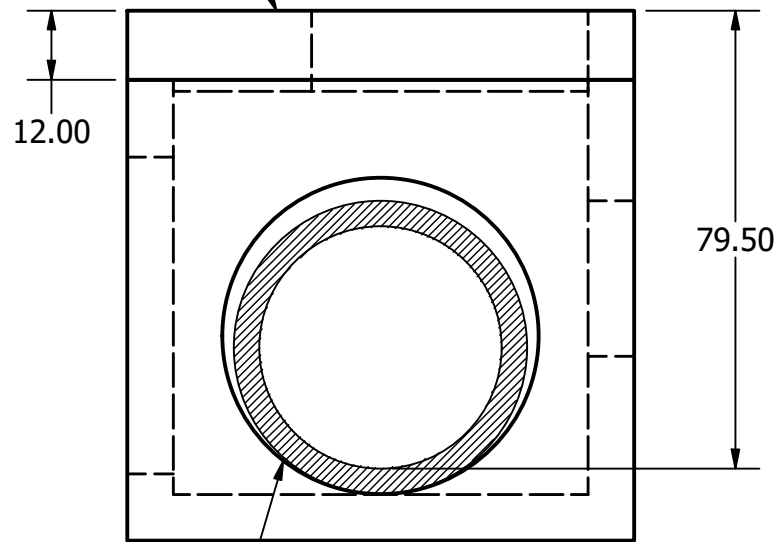


BACK



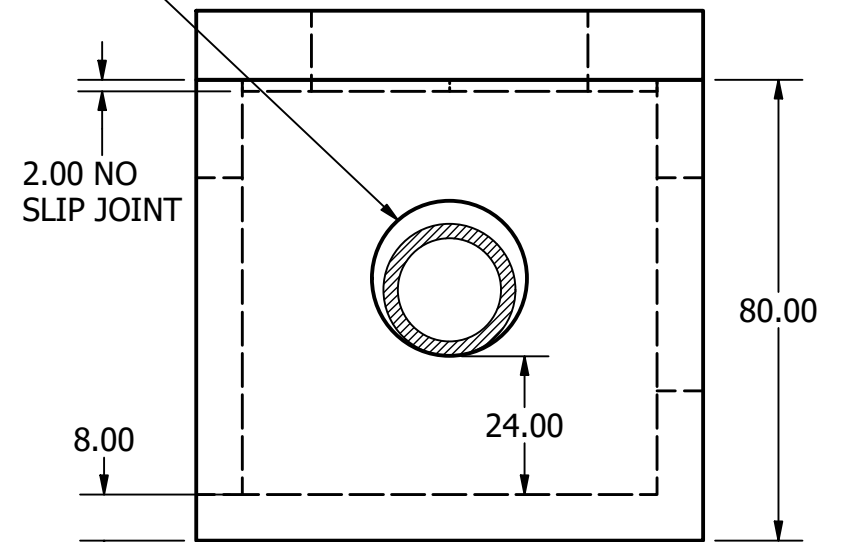
LEFT

ELEV. = 6943.93'



FRONT

Ø24" BLOCKOUT
FOR 18" RCP
INV. IN = 6939.30'



RIGHT

- NOTES:
1. FOR RECTANGULAR STRUCTURES WE FOLLOW ASTM C913
 2. CONCRETE STRENGTH: 5,000 PSI
 3. ESTIMATED WEIGHT LID: 6,700 LBS
 4. ESTIMATED WEIGHT BASE: 17,000 LBS
 5. STEPS: MA INDUSTRIES PS2-PF @ 12" O.C.
 6. LIFTING: CTS E-LIFT UTILITY ANCHORS - 512G x 4 EACH PIECE
 7. REBAR TYPE: BLACK


Ø55" BLOCKOUT
FOR 42" RCP
INV. IN = 6937.60'

Ø55" BLOCKOUT
FOR 42" RCP
INV. OUT = 6937.30'



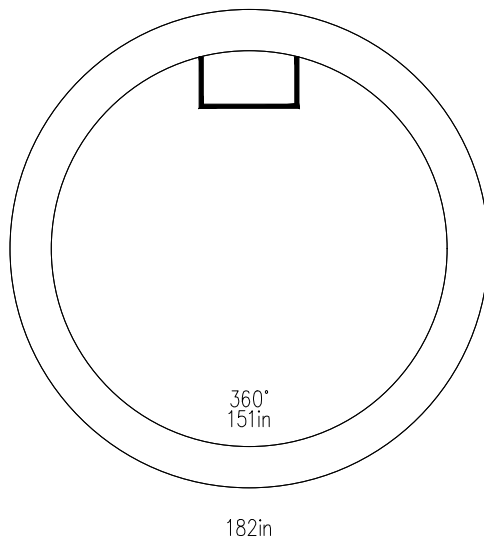
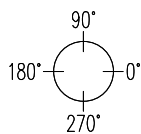
9455 BOSTON COURT
HENDERSON, CO 80640
303-853-8053

FRAZEE FALCON MEADOWS		
STM-MH01 6' x 6' BOX BASE		
DRAWN BY TKlar	DWG NO Assembly1 DRAWING	REV
SCALE 0.03 : 1	DATE 10/08/2021	FORTERRA PROJECT NO. 7021365MH1

Design Build Height			Stack Build Height			Elevation		Station: 2177+10.83 Center	
Top of Casting	+	6941.78	Casting	+	.67	<div>ⓑ</div> 			
Outlet Invert	−	6933.48	Adjusting Ring	+	.58				
Wall Thk/Inv Adj	+	.00	Cone	+	3.00				
Design Height	=	8.30	Riser	+	4.00				
Casting/Adj Ring	−	1.25	Base Thickness	+	.00				
Manhole Hgt	=	7.05	Outside Height	=	8.25				

Opening Schedule								(HF=Hole Former, DO=Dig Out)	
ID	Pipe Size	Invert	Invert Up	Pipe O.D.	Opening/Connector	Top of Hole Up	C-Line Hole Up	Btm of Hole Up	

Plan View



Steps: 12" On Center 90°

Item List

ID	Description	Product No	Hgt	Qty	Weight
A	EJ 2400 Cover Storm Knobby	9000100000659	.00	1	148
B	EJ 2420Z Ring 8"	9000100000947	.67	1	0
C	24x3 Interlock Adjusting Ring	909010024030A	.25	1	120
C	24x4 Interlock Adjusting Ring	909010024040A	.33	1	160
D	48x3.0 24 Ecc Cone PHS S	204809V2100000030	3.00	1	2,900
E	48x4.0 BBL PHS S	204801V0100000040	4.00	1	3,480
F	Unknown		.00	1	0
Total Weight (lbs)					6,808

Notes

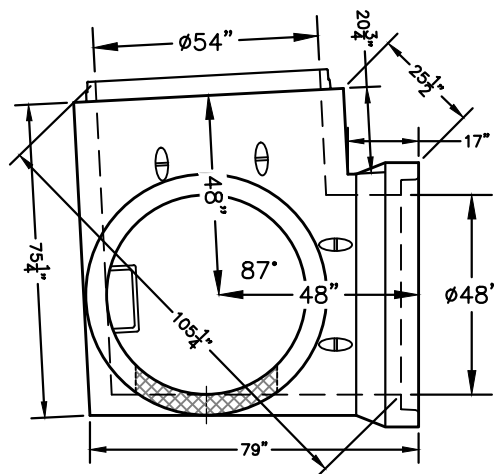
RISER MATERIAL ABOVE T BASE

Misc. Items

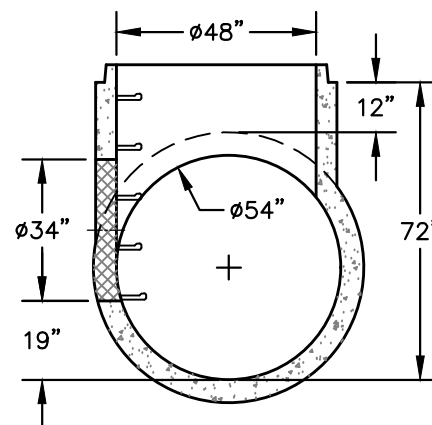
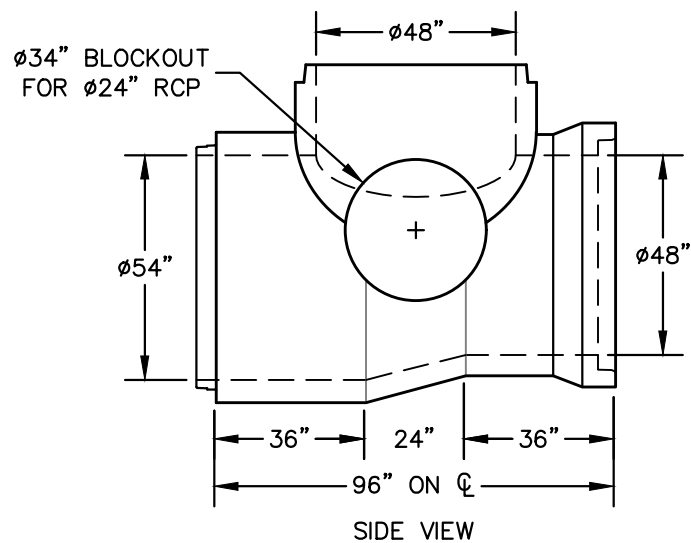
Description	Qty
Gasket PHS 48 inch SSMH	1

Production Use

Mfg. Date:	
Ship Date:	
Frame/Ring:	
Grate/Cover:	
PREPOUR:	
POSTPOUR:	



RIM 6941.78
INV 6927.48
HT 14.30



NOTES:

1. RCP ASTM C76 CLASS 3
2. RISER ASTM C478
3. ESTIMATED WEIGHT 9,500 LBS
4. 4 SUREBUILT UEL412G ANCHORS IN POCKETS



9455 BOSTON COURT
HENDERSON, CO 80640
303-853-8053

THIS BAR IS ONE INCH ON ORIGINAL DRAWING
0 1"
IF THIS BAR IS NOT ONE INCH ADJUST SCALE

FALCON MEADOWS AT BENT GRASS F1
FOR: FRAZEE CONSTRUCTION

SPECIAL #1 (STM-MH07)
48on54x8.0 CL3 Bend Tee Red S PHS B

DRAWN BY
JKC

SO#
7021365PI1

REV
-

SCALE
1/4"=1'

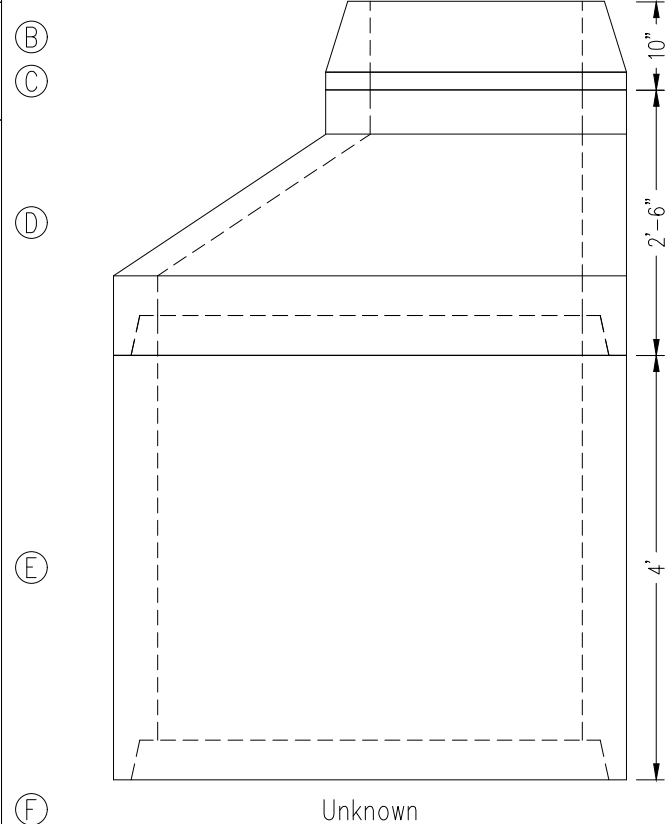
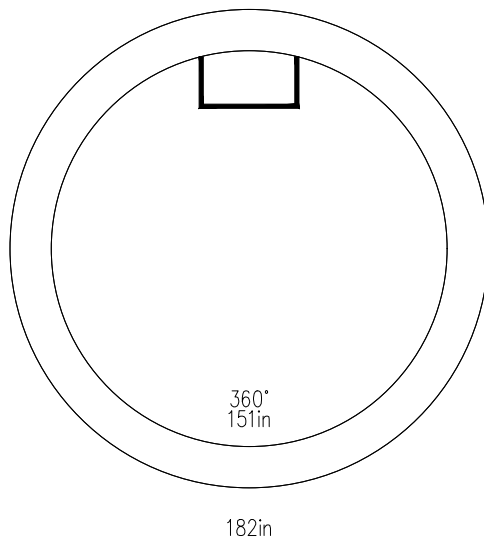
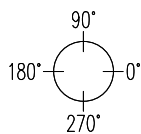
DATE
10-4-21

SHEET
1 OF 5

Design Build Height			Stack Build Height			Elevation		Station: 9+79.13 Center	
Top of Casting	+	6942.08	Casting	+	.67				
Outlet Invert	−	6934.70	Adjusting Ring	+	.17				
Wall Thk/Inv Adj	+	.00	Cone	+	2.50				
Design Height	=	7.38	Riser	+	4.00				
Casting/Adj Ring	−	.83	Base Thickness	+	.00				
Manhole Hgt	=	6.55	Outside Height	=	7.33				

Opening Schedule								(HF=Hole Former, DO=Dig Out)	
ID	Pipe Size	Invert	Invert Up	Pipe O.D.	Opening/Connector	Top of Hole Up	C-Line Hole Up	Btm of Hole Up	

Plan View



Notes

RISER MATERIAL ABOVE T BASE

Steps: 12" On Center 90°

Item List

ID	Description	Product No	Hgt	Qty	Weight
A	EJ 2400 Cover Storm Knobby	9000100000659	.00	1	148
B	EJ 2420Z Ring 8"	9000100000947	.67	1	0
C	24x2 Interlock Adjusting Ring	909010024020A	.17	1	80
D	48x2.5 24 Ecc Cone PHS S	204809V2100000025	2.50	1	2,370
E	48x4.0 BBL PHS S	204801V0100000040	4.00	1	3,480
F	Unknown		.00	1	0
Total Weight (lbs)					6,078

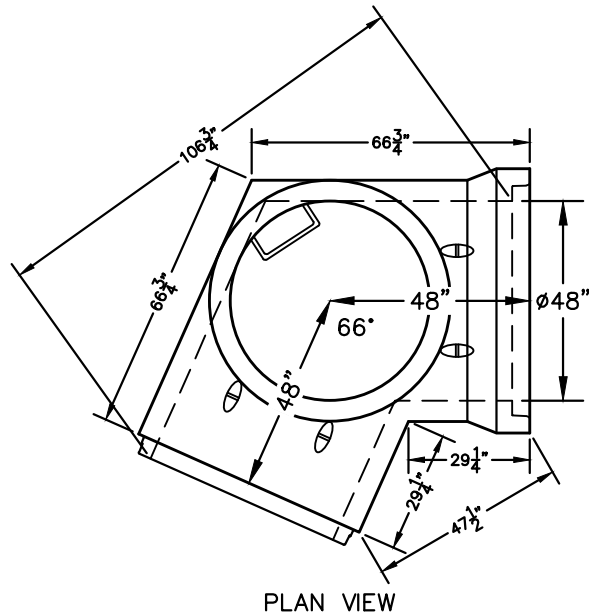
Misc. Items

Description	Qty
Gasket PHS 48 inch SSMH	1

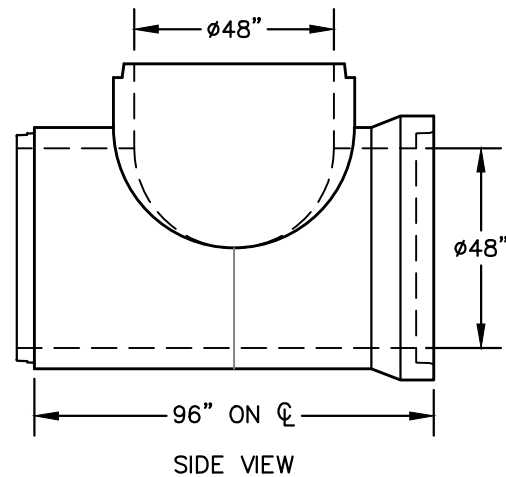
Production Use

Mfg. Date:	
Ship Date:	
Frame/Ring:	
Grate/Cover:	
PREPOUR:	
POSTPOUR:	

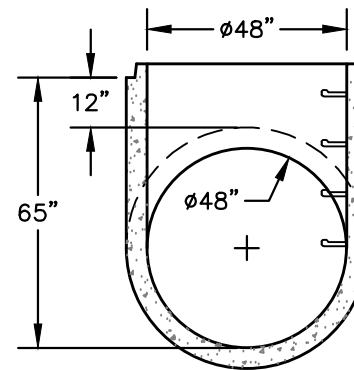
I:\2021\7021365\7021365P1\Engineering\Falcon_Meadows_1.dwg, 10/4/2021 8:27:23 PM



PLAN VIEW



SIDE VIEW



SECTION VIEW

RIM 6942.08
INV 6929.28
HT 12.80

- NOTES:
1. RCP ASTM C76 CLASS 3
 2. RISER ASTM C478
 3. ESTIMATED WEIGHT 9,000 LBS
 4. 4 SUREBUILT UEL412G ANCHORS IN POCKETS




9455 BOSTON COURT
HENDERSON, CO 80640
303-853-8053

THIS BAR IS ONE INCH ON ORIGINAL DRAWING
0 1"
IF THIS BAR IS NOT ONE INCH ADJUST SCALE

FALCON MEADOWS AT BENT GRASS F1
FOR: FRAZEE CONSTRUCTION

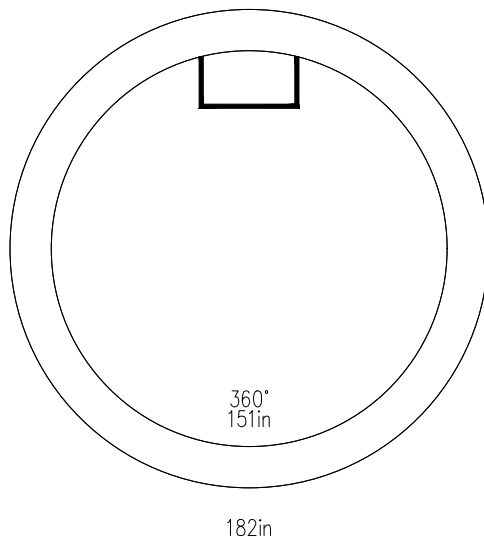
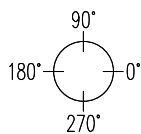
SPECIAL #2 (STM-MH06)
48on48x8.0 CL3 Bend Tee S PHS B

DRAWN BY JKC	SO# 7021365P11	REV -
SCALE 1/4"=1'	DATE 10-4-21	SHEET 2 OF 5

Design Build Height			Stack Build Height			Elevation		Station: 11+95.86 Center	
Top of Casting	+	6944.31	Casting	+	.67				
Outlet Invert	-	6936.70	Adjusting Ring	+	.42				
Wall Thk/Inv Adj	+	.00	Cone	+	2.50				
Design Height	=	7.61	Riser	+	4.00				
Casting/Adj Ring	-	1.08	Base Thickness	+	.00				
Manhole Hgt	=	6.53	Outside Height	=	7.58				

Opening Schedule								(HF=Hole Former, DO=Dig Out)	
ID	Pipe Size	Invert	Invert Up	Pipe O.D.	Opening/Connector	Top of Hole Up	C-Line Hole Up	Btm of Hole Up	

Plan View



Steps: 12" On Center 90°

Item List

ID	Description	Product No	Hgt	Qty	Weight
A	EJ 2400 Cover Storm Knobby	9000100000659	.00	1	148
B	EJ 2420Z Ring 8"	9000100000947	.67	1	0
C	24x2 Interlock Adjusting Ring	909010024020A	.17	1	80
C	24x3 Interlock Adjusting Ring	909010024030A	.25	1	120
D	48x2.5 24 Ecc Cone PHS S	204809V2100000025	2.50	1	2,370
E	48x4.0 BBL PHS S	204801V0100000040	4.00	1	3,480
F	Unknown		.00	1	0
Total Weight (lbs)					6,198

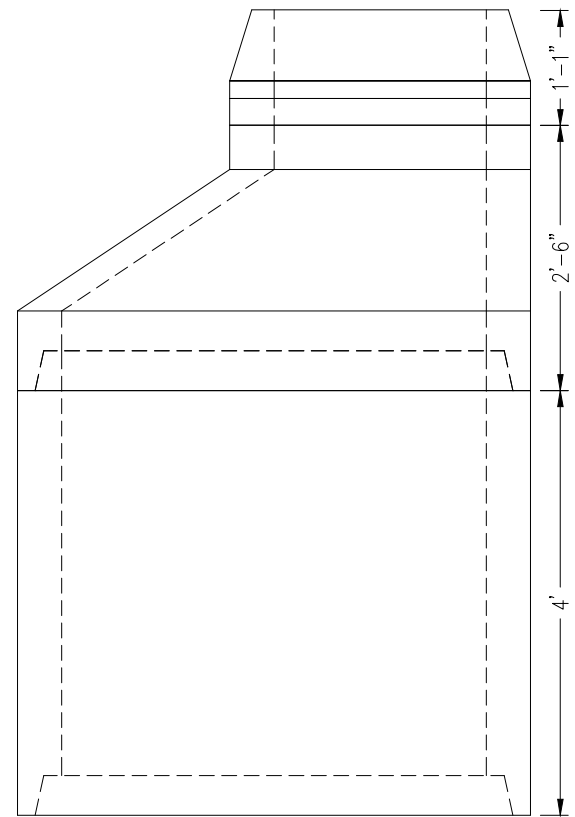
Ⓑ

Ⓒ

Ⓓ

Ⓔ

Ⓕ



Notes

RISER MATERIAL ABOVE T BASE

Misc. Items

Description	Qty
Gasket PHS 48 inch SSMH	1

Production Use

Mfg. Date:	
Ship Date:	
Frame/Ring:	
Grate/Cover:	
PREPOUR:	
POSTPOUR:	

Orthographic drawing of a mechanical part showing the side view. The part has a semi-circular top with a diameter of 48 inches. The overall width is 96 inches on center. The height of the side flange is 48 inches. Hidden lines are shown with dashed lines.

SECTION VIEW

NOTES:

1. RCP ASTM C76 CLASS 3
2. RISER ASTM C478
3. ESTIMATED WEIGHT 9,000 LBS
4. 4 SUREBUILT UEL412G ANCHORS IN POCKETS



9455 BOSTON COURT
HENDERSON, CO 80640
303-853-8053

THIS BAR IS ONE INCH ON ORIGINAL DRAWING

0 _____ 1'

IF THIS BAR IS NOT ONE INCH ADJUST SCALE

FALCON MEADOWS AT BENT GRASS F1
FOR: FRAZEE CONSTRUCTION

SPECIAL #3 (STM-MH05)
48on48x8.0 CL3 Bend Tee S PHS B

G	DRAWN BY JKC
---	-----------------

SCALE
1/4"=1'

SO#	7021365PI1
-----	------------

DATE	10-4-21
------	---------

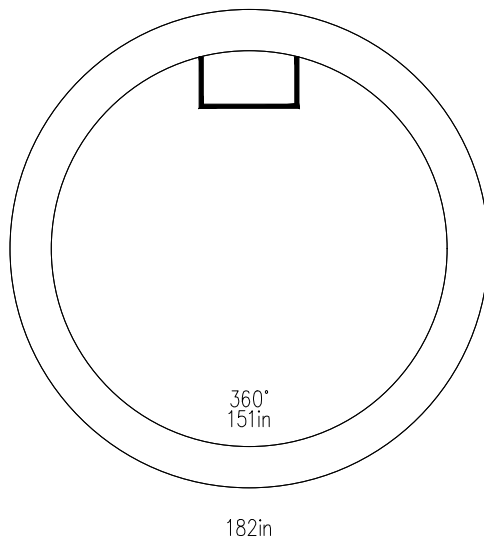
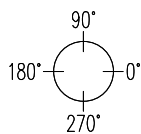
REV	—
-----	---

SHEET 3 OF 5

Design Build Height			Stack Build Height			Elevation	Station: 12+43.13 Center
Top of Casting	+	6944.74	Casting	+	.67		
Outlet Invert	−	6937.42	Adjusting Ring	+	.17		
Wall Thk/Inv Adj	+	.00	Cone	+	2.50		
Design Height	=	7.32	Riser	+	4.00		
Casting/Adj Ring	−	.83	Base Thickness	+	.00		
Manhole Hgt	=	6.49	Outside Height	=	7.33		

Opening Schedule								(HF=Hole Former, DO=Dig Out)	
ID	Pipe Size	Invert	Invert Up	Pipe O.D.	Opening/Connector	Top of Hole Up	C-Line Hole Up	Btm of Hole Up	

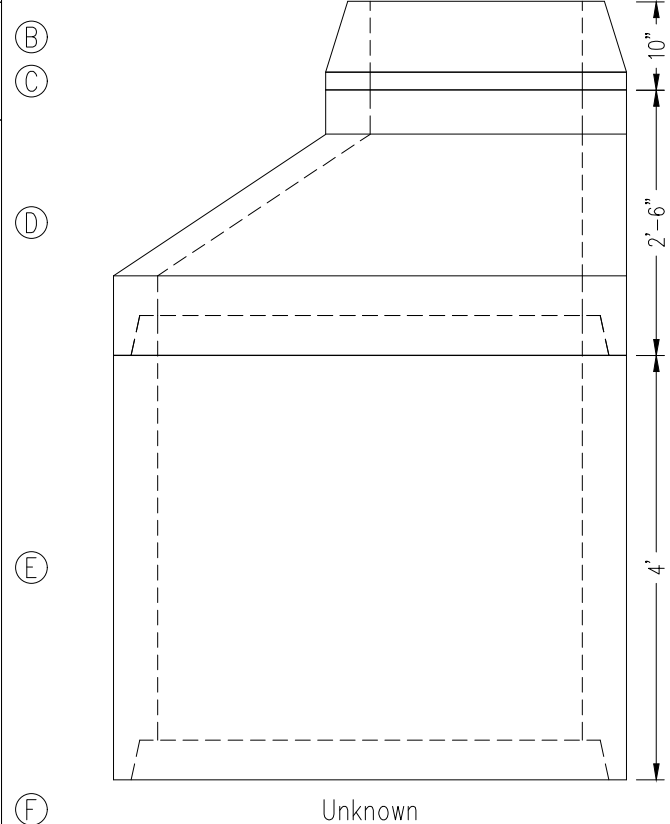
Plan View



Steps: 12" On Center 90°

Item List

ID	Description	Product No	Hgt	Qty	Weight
A	EJ 2400 Cover Storm Knobby	9000100000659	.00	1	148
B	EJ 2420Z Ring 8"	9000100000947	.67	1	0
C	24x2 Interlock Adjusting Ring	909010024020A	.17	1	80
D	48x2.5 24 Ecc Cone PHS S	204809V2100000025	2.50	1	2,370
E	48x4.0 BBL PHS S	204801V0100000040	4.00	1	3,480
F	Unknown		.00	1	0
Total Weight (lbs)					6,078



Notes

RISER MATERIAL ABOVE T BASE

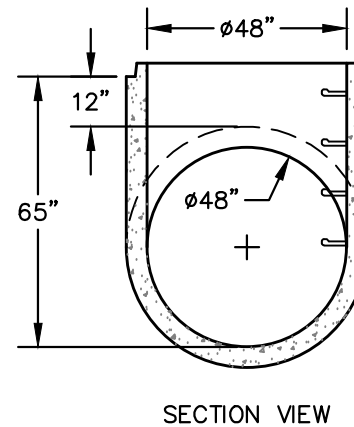
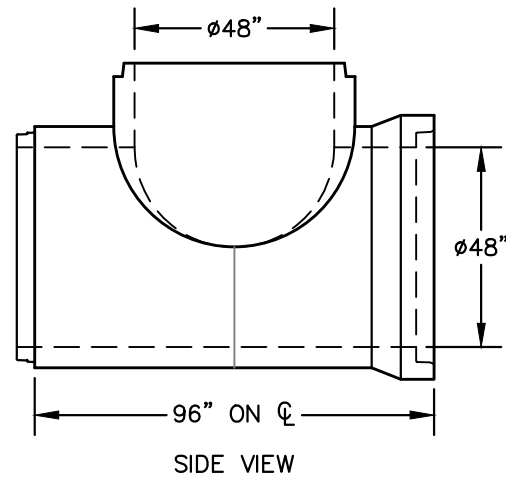
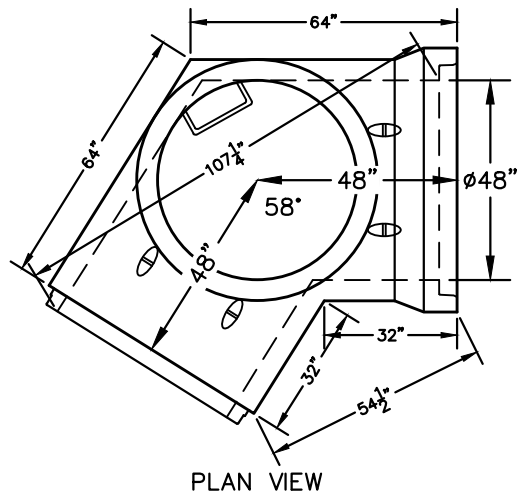
Misc. Items

Description	Qty
Gasket PHS 48 inch SSMH	1

Production Use

Mfg. Date:	
Ship Date:	
Frame/Ring:	
Grate/Cover:	
PREPOUR:	
POSTPOUR:	

I:\2021\7021365\7021365PI1\Engineering\Falcon_Meadows_1.dwg, 10/4/2021 8:27:23 PM



RIM 6947.74
INV 6932.01
HT 15.73

- NOTES:
1. RCP ASTM C76 CLASS 3
 2. RISER ASTM C478
 3. ESTIMATED WEIGHT 9,000 LBS
 4. 4 SUREBUILT UEL412G ANCHORS IN POCKETS



9455 BOSTON COURT
HENDERSON, CO 80640
303-853-8053

THIS BAR IS ONE INCH ON ORIGINAL DRAWING
0 1"
IF THIS BAR IS NOT ONE INCH ADJUST SCALE

FALCON MEADOWS AT BENT GRASS F1
FOR: FRAZEE CONSTRUCTION

SPECIAL #4 (STM-MH04)
48on48x8.0 CL3 Bend Tee S PHS B

DRAWN BY
JKC

SO#
7021365PI1

REV
-

SCALE
1/4"=1'

DATE
10-4-21

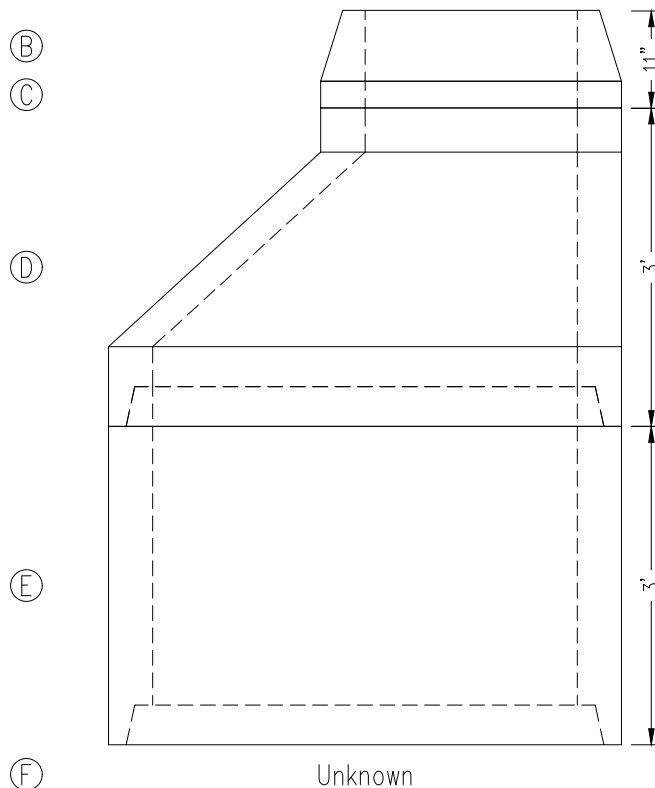
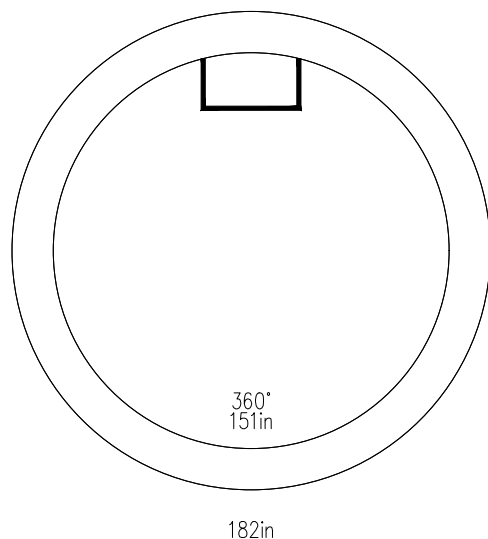
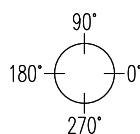
SHEET
4 OF 5

Design Build Height			Stack Build Height			Elevation		Station: 13+09.09 Center	
Top of Casting	+	6945.39	Casting	+	.67				
Outlet Invert	−	6938.48	Adjusting Ring	+	.25				
Wall Thk/Inv Adj	+	.00	Cone	+	3.00				
Design Height	=	6.91	Riser	+	3.00				
Casting/Adj Ring	−	.92	Base Thickness	+	.00				
Manhole Hgt	=	5.99	Outside Height	=	6.92				

Opening Schedule (HF=Hole Former, DO=Dig Out)

ID	Pipe Size	Invert	Pipe Up	Opening/ O.D.	Connector	Top of Hole Up	C-Line Hole Up	Btm of Hole Up
----	-----------	--------	---------	---------------	-----------	----------------	----------------	----------------

Plan View



Notes

RISER MATERIAL ABOVE T BASE

Steps: 12" On Center 90°

Item List

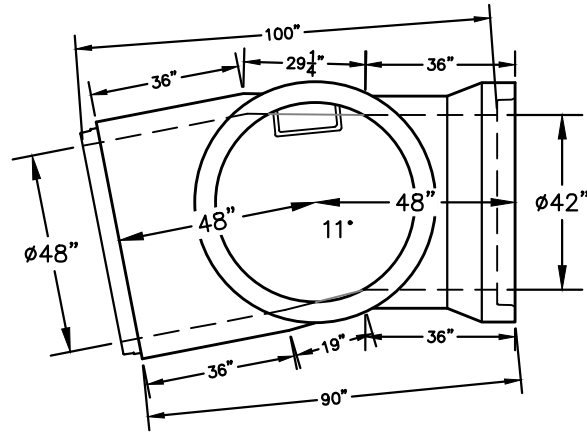
ID	Description	Product No	Hgt	Qty	Weight
A	EJ 2400 Cover Storm Knobby	9000100000659	.00	1	148
B	EJ 2420Z Ring 8"	9000100000947	.67	1	0
C	24x3 Interlock Adjusting Ring	909010024030A	.25	1	120
D	48x3.0 24 Ecc Cone PHS S	204809V2100000030	3.00	1	2,900
E	48x3.0 BBL PHS S	204801V0100000030	3.00	1	2,610
F	Unknown		.00	1	0
Total Weight (lbs)					5,778

Misc. Items

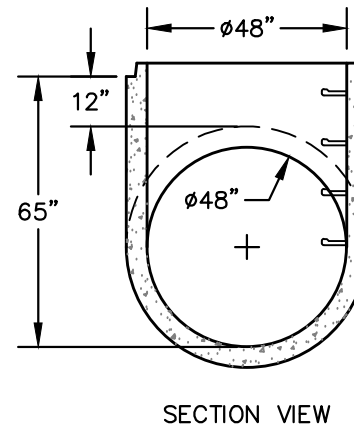
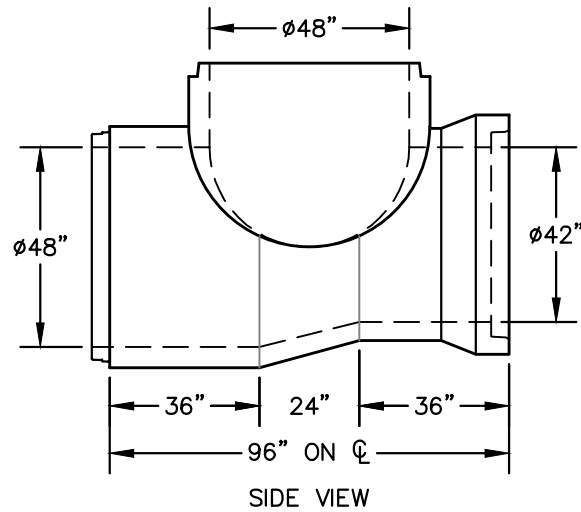
Description	Qty
Gasket PHS 48 inch SSMH	1

Production Use

Mfg. Date:	
Ship Date:	
Frame/Ring:	
Grate/Cover:	
PREPOUR:	
POSTPOUR:	



RIM 6945.39
INV 6933.06
HT 12.33



SECTION VIEW

- NOTES:
1. RCP ASTM C76 CLASS 3
 2. RISER ASTM C478
 3. ESTIMATED WEIGHT 8,500 LBS
 4. NO LIFT ANCHORS



9455 BOSTON COURT
HENDERSON, CO 80640
303-853-8053

THIS BAR IS ONE INCH ON ORIGINAL DRAWING
0 1"
IF THIS BAR IS NOT ONE INCH ADJUST SCALE

FALCON MEADOWS AT BENT GRASS F1
FOR: FRAZEE CONSTRUCTION

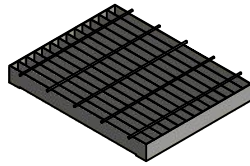
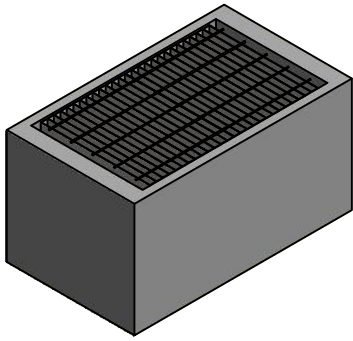
SPECIAL #5 (STM-MH03)
48on48x8.0 CL3 Bend Tee Red S PHS B

DRAWN BY JKC	SO# 7021365P11	REV -
SCALE 1/4"=1'	DATE 10-4-21	SHEET 5 OF 5

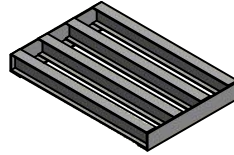
TYPE D

TYPE D INLET COMPONENTS

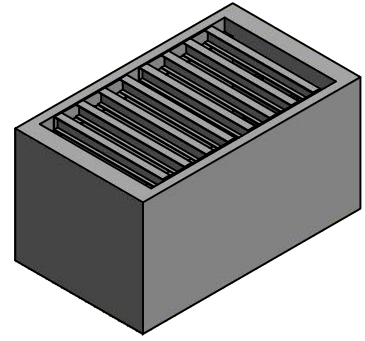
GRATES



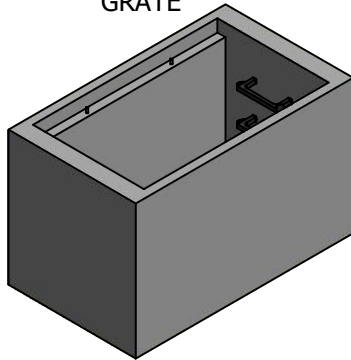
CLOSE MESH GRATE



STANDARD INLET GRATE



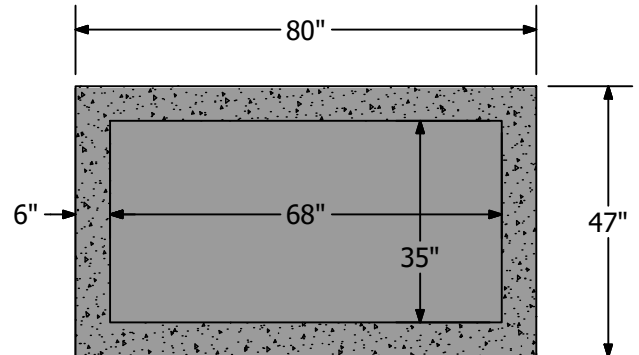
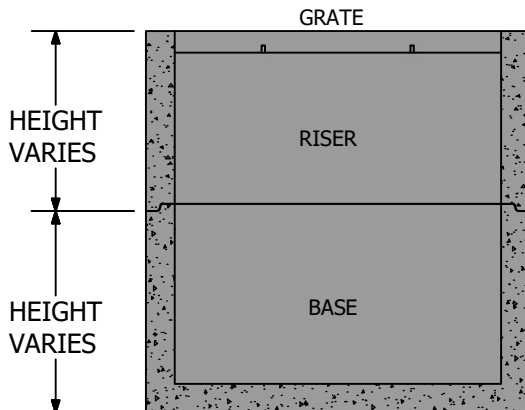
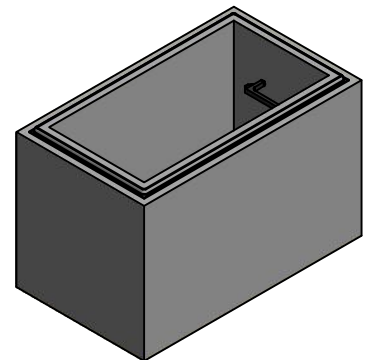
GRATE



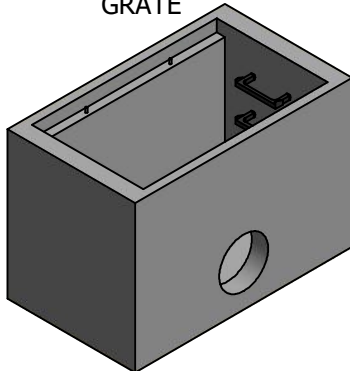
TYPE D INLET RISERS

HEIGHT	WEIGHT
1'	1650 LBS
2'	3100 LBS
3'	4500 LBS
4'	5950 LBS
5'	7400 LBS
6'	8850 LBS

TONGUE



GRATE

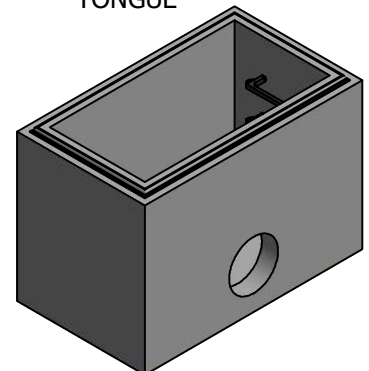


TYPE D INLET BASES

HEIGHT	WEIGHT
3'	6400 LBS
4'	7850 LBS
5'	9250 LBS
6'	10700 LBS

*CUSTOM HOLE CONFIGURATIONS AVAILABLE

TONGUE



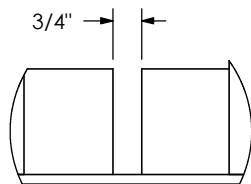
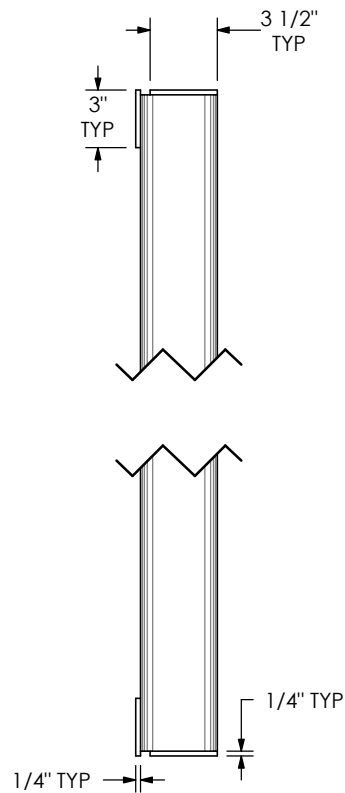
NOTES:

- ALL WEIGHTS ARE APPROXIMATE
- ALL TYPE D INLETS HAVE 6" WALL THICKNESS
- STEPS INCLUDED WHEN INLET IS 3' 6" OR HIGHER
- SPECIFY GRATE STYLE WHEN ORDERING

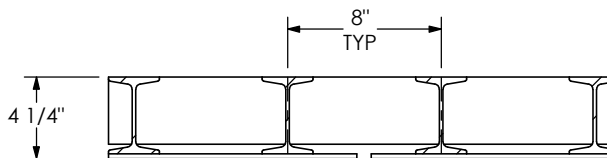
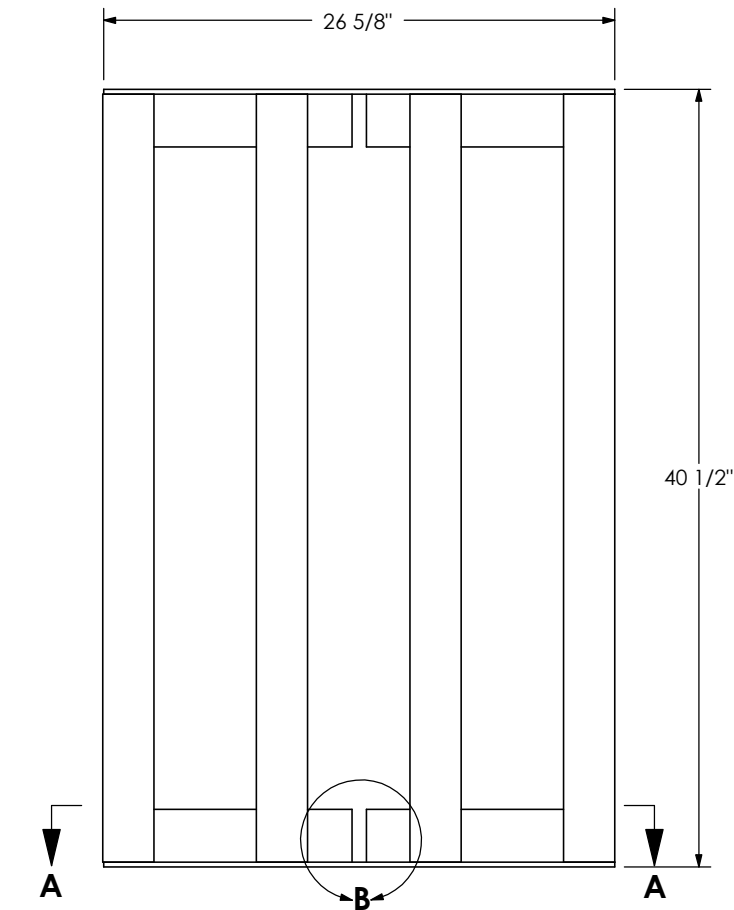


9405 ALTON COURT
HENDERSON, CO 80640
303-853-8053

PRECAST TYPE C STANDARD GRATE GALV



DETAIL B
TYP BOTH SLOTS



SECTION A-A

Product Number

03180106

Design Features

- Materials
Steel-A36
- Design Load
- Open Area
- Coating
Galvanized
- √ Designates Machined Surface

Reference Material

- 03180106
- Estimated Weight: 127 LBS
- Country of Origin: USA

Drawing Revision

- 06/11/2015 Designer: DB
- 05/11/2016 Revised By: RKC

Disclaimer

Weights (lbs/kg), dimensions (inches/mm) and drawings provided for your guidance. We reserve the right to modify specifications without prior notice.

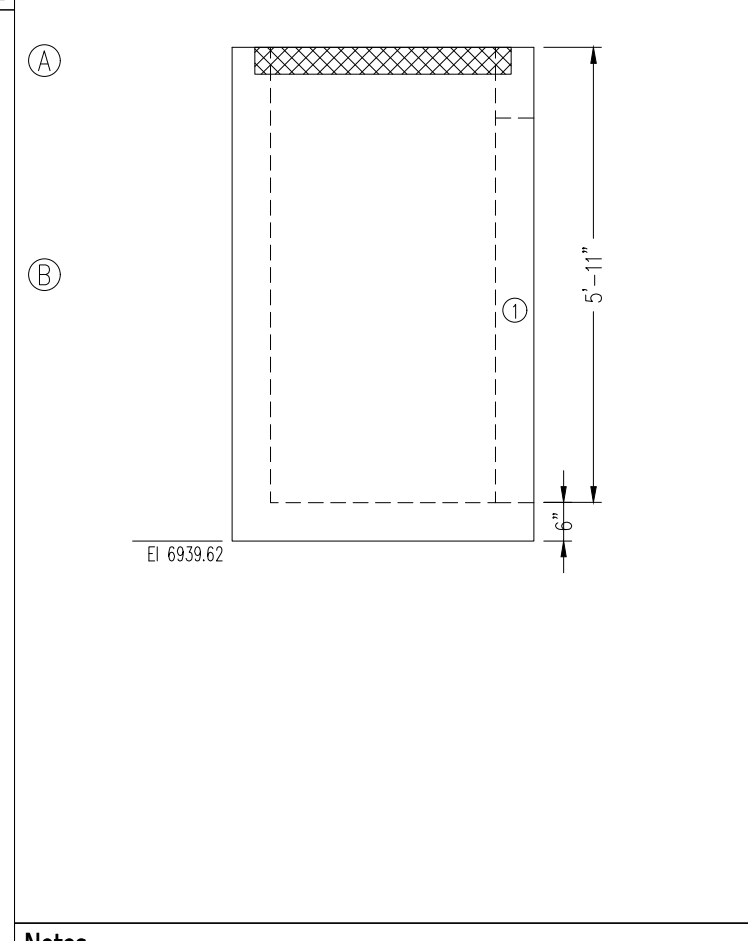
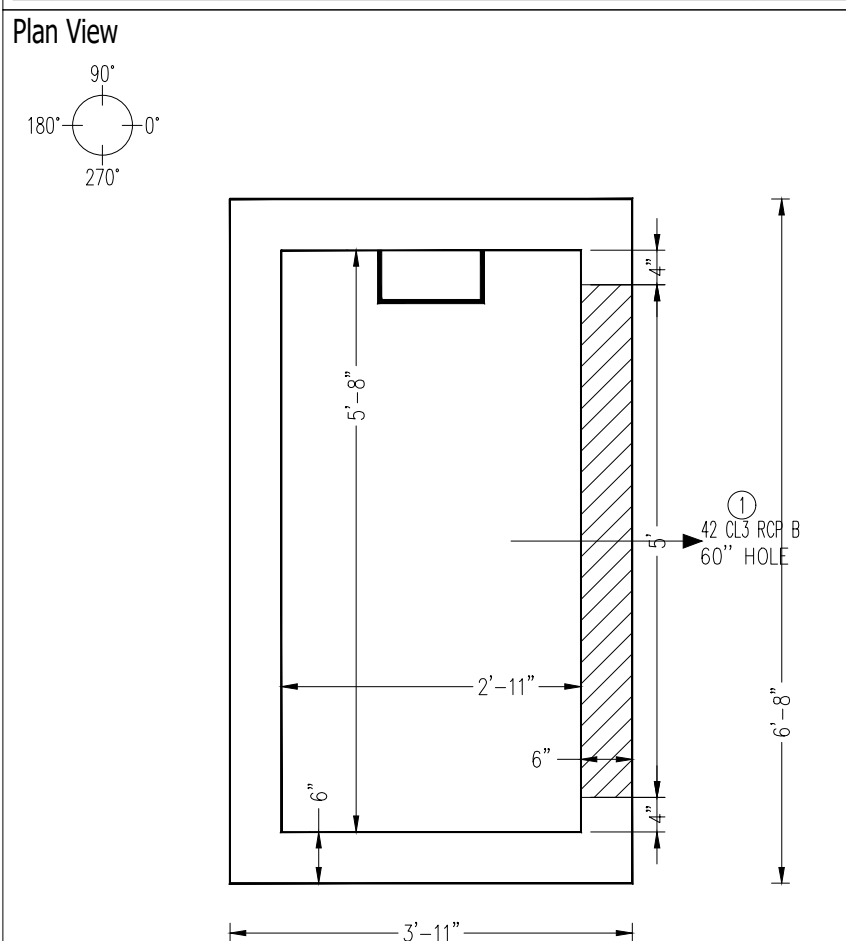
CONFIDENTIAL: This drawing is the property of EJ Group, Inc. and embodies confidential information, registered marks, patents, trade secret information, and/or know how that is the property of EJ Group, Inc. Copyright © 2012 EJ Group, Inc. All rights reserved.

Contact

800 626 4653
ejco.com

Design Build Height			Stack Build Height			Pipe Footage		
Top of Casting	+	6946.03	Mono Base	+	5.92	<u>ID</u>	<u>LF</u>	<u>Description</u>
Outlet Invert	−	6940.50	Base Thickness	+	.50	Elevation Station: 0+97.02 Center		
Wall Thk/Inv Adj	+	.38	Outside Height	=	6.42			
Design Height	=	5.91						
Casting/Adj Ring	−	.00						
Manhole Hgt	=	5.91						

Opening Schedule (HF=Hole Former, DO=Dig Out)								
ID	Pipe Size	Invert	Invert Up	Pipe O.D.	Opening/Connector	Top of Hole Up	C-Line Hole Up	Btm of Hole Up
#1	42 CL3 RCP B	6940.50	.00	51in	60" HOLE	60in	30in	0in

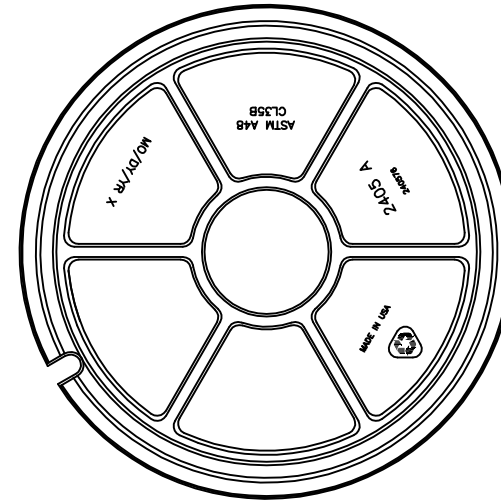
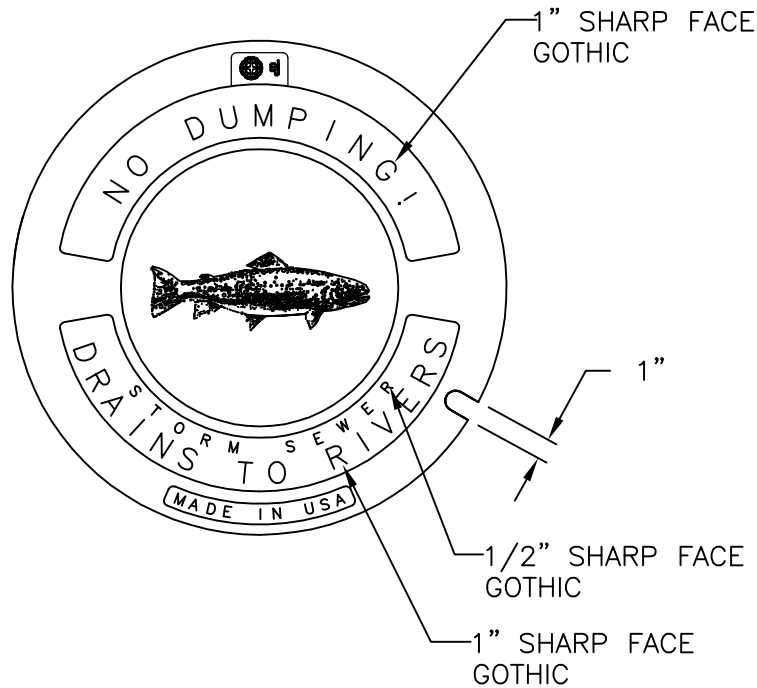


Steps: 12" On Center 90°

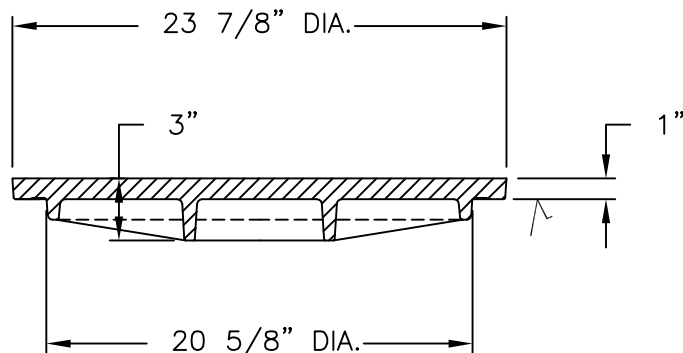
Item List						Misc. Items		Production Use	
ID	Description	Product No	Hgt	Qty	Weight	Description	Qty	Mfg. Date:	
A	CastingsInc IGCSTT Grate Type C	90021000000093	.35	1	0	CastingsInc IGCSTT Grate Type C	1	Ship Date:	
B	5.7x2.9x5.9 Mono T S 6B 6W TypeD	305702930606001G0T00059	5.92	1	10,500			Frame/Ring:	
					Total Weight (lbs)			Grate/Cover:	
					10,500			PREPOUR:	
								POSTPOUR:	

TYPE R'S

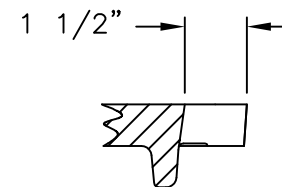
2405A Cover



COVER BACK



SECTION



PICKSLOT DETAIL

Product Number

00240576

Design Features

- Materials
Gray Iron (CL35B)
- Design Load
Heavy Duty
- Open Area
n/a
- Coating
Undipped
- ✓ Designates Machined Surface

Weight

- 148 lb

Certification

- ASTM A48
-
- Country of Origin: USA

Drawing Revision

3/10/2001 Designer: JIJ
4/21/2016 Revised By: MAH

Disclaimer

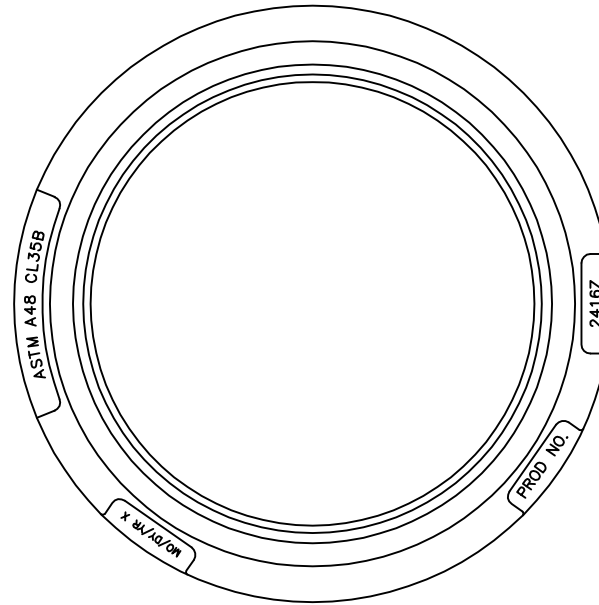
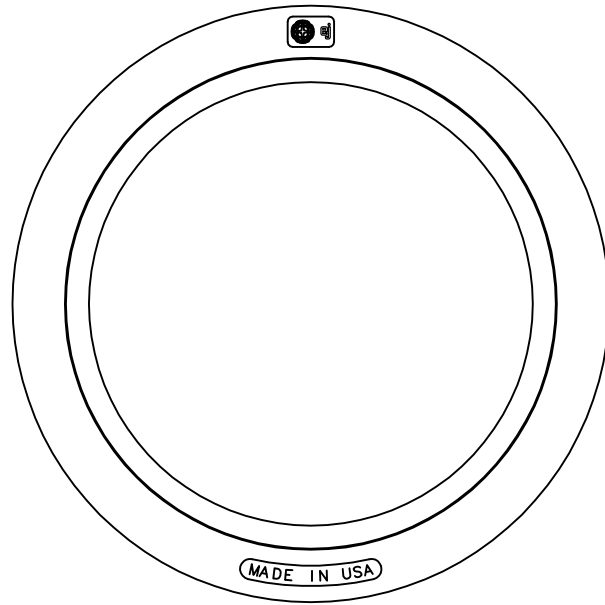
Weights (lbs./kg) dimensions (inches/mm) and drawings provided for your guidance. We reserve the right to modify specifications without prior notice.

CONFIDENTIAL: This drawing is the property of EJ GROUP, Inc., and embodies confidential information, registered marks, patents, trade secret information, and/or know how that is the property of EJ GROUP, Inc. Copyright © 2012 EJ GROUP, Inc. All rights reserved.

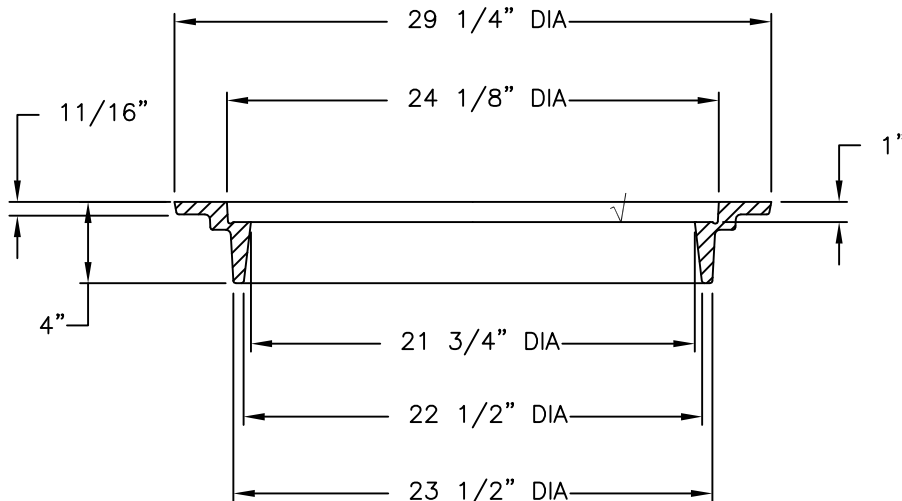
Contact

800 626 4653
ejco.com

2416Z Frame



BOTTOM VIEW OF FRAME



SECTION OF FRAME

Product Number

00241611

Design Features

- Materials
Gray Iron (CL35B)
- Design Load
Heavy Duty
- Open Area
n/a
- Coating
Undipped
- ✓ Designates Machined Surface

Certification

- ASTM A48
-
-
- Country of Origin: USA

Drawing Revision

6/22/2001 Designer: SBB
12/4/2014 Revised By: DAE

Disclaimer

Weights (lbs./kg) dimensions (inches/mm) and drawings provided for your guidance. We reserve the right to modify specifications without prior notice.

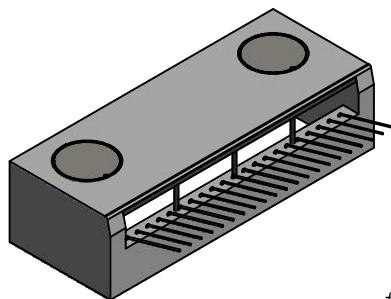
CONFIDENTIAL: This drawing is the property of EJ GROUP, Inc., and embodies confidential information, registered marks, patents, trade secret information, and/or know how that is the property of EJ GROUP, Inc. Copyright © 2012 EJ GROUP, Inc. All rights reserved.

Contact

800 626 4653
ejco.com

10' TYPE R COMPONENTS

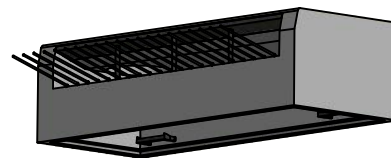
TOPS



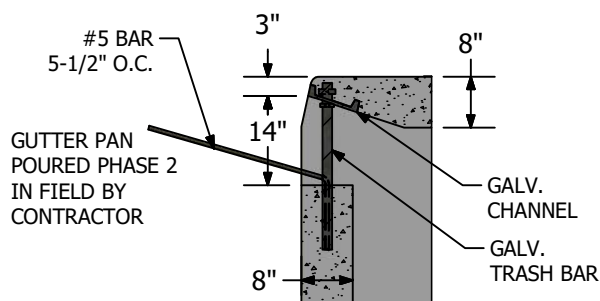
FLAT

HEIGHT	WEIGHT
3'	10350 LBS
4'	13200 LBS
5'	16050 LBS
6'	18950 LBS

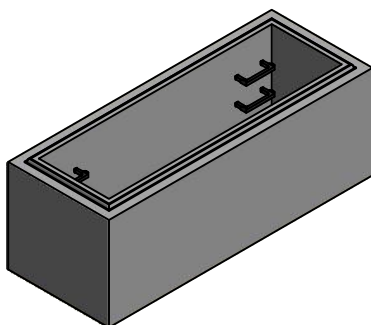
- CUSTOM HOLE CONFIGURATIONS AVAILABLE
- Ø24" RING AND COVER TO BE CAST IN



GROOVE

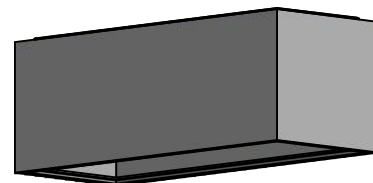


RISERS

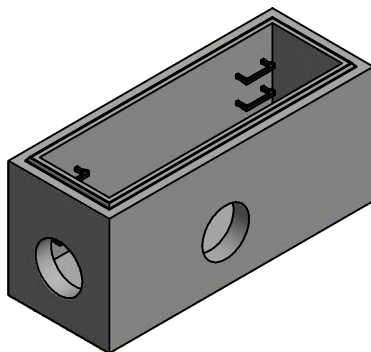


HEIGHT	WEIGHT
1'	2800 LBS
2'	5700 LBS
3'	8550 LBS
4'	11400 LBS
5'	14300 LBS
6'	17150 LBS

TONGUE BY GROOVE

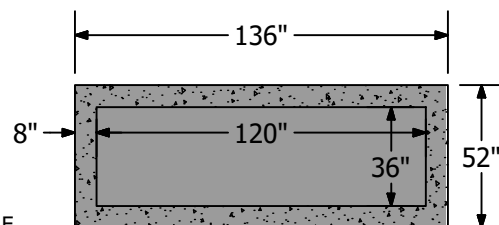


BASES



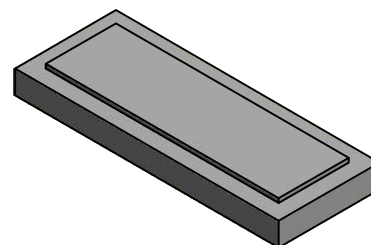
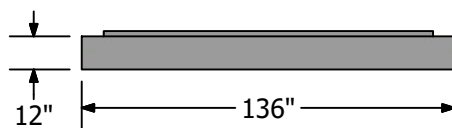
HEIGHT	WEIGHT
3'	16150 LBS
4'	19000 LBS
5'	21900 LBS
6'	24750 LBS

CUSTOM HOLE CONFIGURATIONS AVAILABLE



BASE SLAB

IF NEEDED
WEIGHT - 8150 LBS



NOTES:

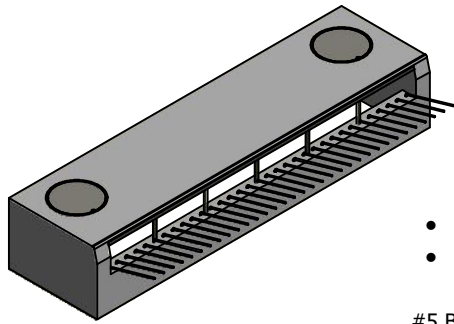
- ALL WEIGHTS ARE APPROXIMATE
- TYPE R HAS 8" WALL THICKNESS
- STEPS INCLUDED ON TOPS, RISERS, AND BASES
- TYPE R COMPONENTS SUITABLE FOR HS-20 LOADING



9405 ALTON COURT
HENDERSON, CO 80640
303-853-8053

15' TYPE R COMPONENTS

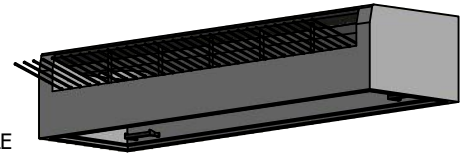
TOPS



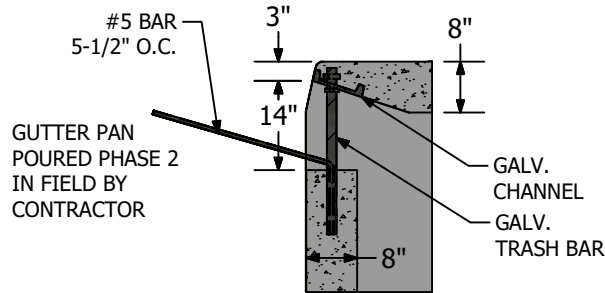
FLAT

HEIGHT	WEIGHT
3'	13300 LBS
4'	17200 LBS
5'	21050 LBS
6'	24950 LBS

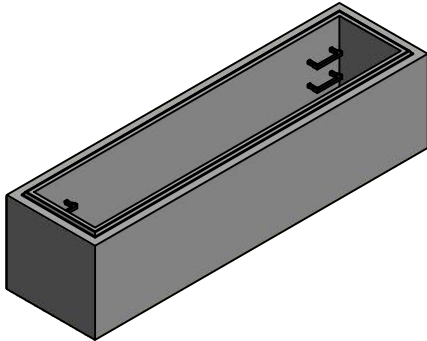
- CUSTOM HOLE CONFIGURATIONS AVAILABLE
- Ø24" RING AND COVER TO BE CAST IN



GROOVE

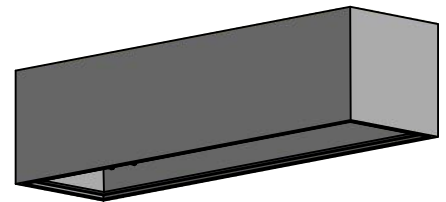


RISERS

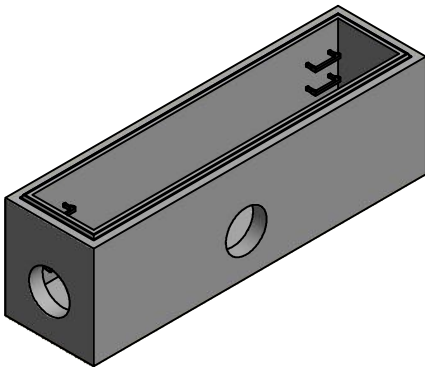


TONGUE BY GROOVE

HEIGHT	WEIGHT
1'	3750 LBS
2'	7650 LBS
3'	11500 LBS
4'	15400 LBS
5'	19250 LBS
6'	23150 LBS

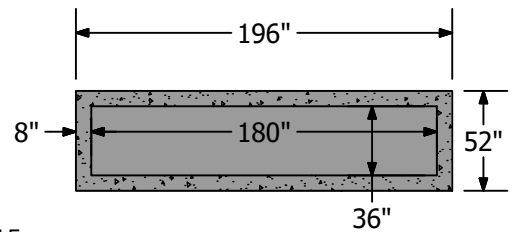


BASES



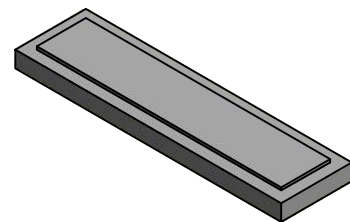
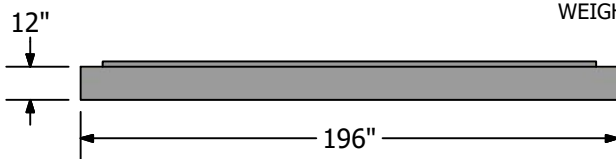
CUSTOM HOLE CONFIGURATIONS AVAILABLE

HEIGHT	WEIGHT
3'	22450 LBS
4'	26350 LBS
5'	30200 LBS
6'	34050 LBS



BASE SLAB

IF NEEDED
WEIGHT - 11800 LBS



NOTES:

- ALL WEIGHTS ARE APPROXIMATE
- TYPE R HAS 8" WALL THICKNESS
- STEPS INCLUDED ON TOPS, RISERS, AND BASES
- TYPE R COMPONENTS SUITABLE FOR HS-20 LOADING



9405 ALTON COURT
HENDERSON, CO 80640
303-853-8053

CHANNEL TYPE R 10' 10" W/BOLT SETS

03170105

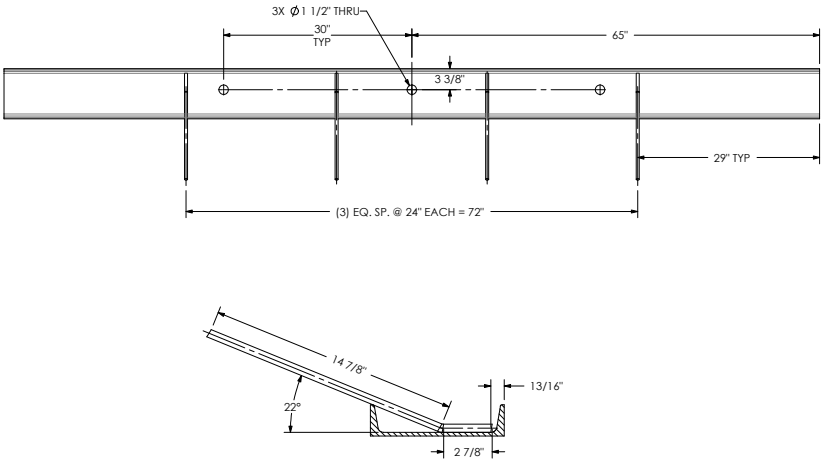


CHANNEL 10' 10" GALVANIZED



03170100

Quantity: 1



Product Number

03170100

Design Features

- Materials
 - Steel-A36
- Design Load
- Open Area
- Coating
 - Galvanized
- √ Designates Machined Surface

Reference Material

- 03170100
- Estimated Weight: 114 LBS
- Country of Origin: USA

Drawing Revision

06/10/2015 Designer: DB
Revised By:

Disclaimer

Weights (lbs/kg), dimensions (inches/mm) and drawings provided for your guidance. We reserve the right to modify specifications without prior notice.

CONFIDENTIAL: This drawing is the property of EJ Group, Inc. and embodies confidential information, registered marks, patents, trade secret information, and/or know how that is the property of EJ Group, Inc. Copyright © 2012 EJ Group, Inc. All rights reserved.

Contact

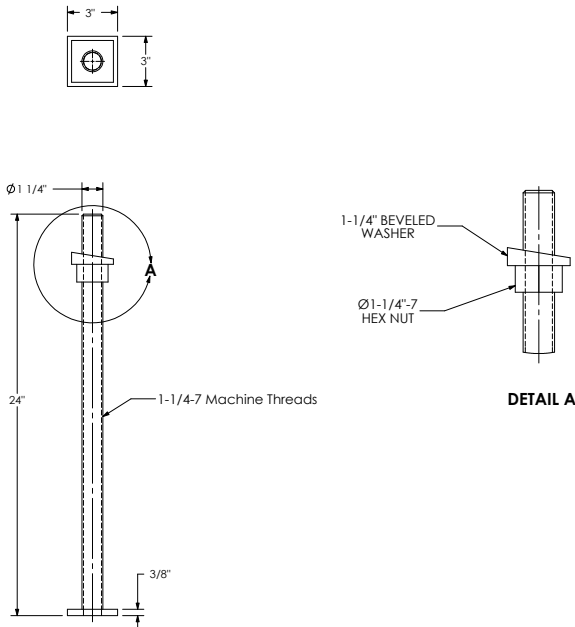
800 626 4653
ejco.com

TYPE R BOLT SET GALV



03180201

Quantity: 3



Product Number

03180201

Design Features

- Materials
 - Steel-A36
- Design Load
- Open Area
- Coating
 - Galvanized
- √ Designates Machined Surface

Reference Material

- NPR14-4177
- Estimated Weight: 11 LBS
- Country of Origin: USA

Drawing Revision

10/17/2014 Designer: RKC
Revised By:

Disclaimer

Weights (lbs/kg), dimensions (inches/mm) and drawings provided for your guidance. We reserve the right to modify specifications without prior notice.

CONFIDENTIAL: This drawing is the property of EJ Group, Inc. and embodies confidential information, registered marks, patents, trade secret information, and/or know how that is the property of EJ Group, Inc. Copyright © 2012 EJ Group, Inc. All rights reserved.

Contact

800 626 4653
ejco.com

Disclaimer

Weight (lbs./kg), dimensions (inches/mm) and drawings provided for your guidance. We reserve the right to modify specifications without prior notices

CONFIDENTIAL: This drawing is the property of EJ GROUP, Inc., and embodies confidential information, registered marks, patents, trade secret information, and/or know how that is the property of EJ GROUP, Inc. Copyright 2016 EJ GROUP, Inc. All rights reserved

Contact

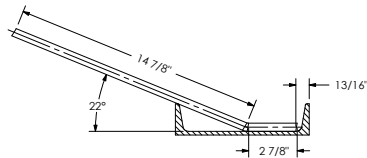
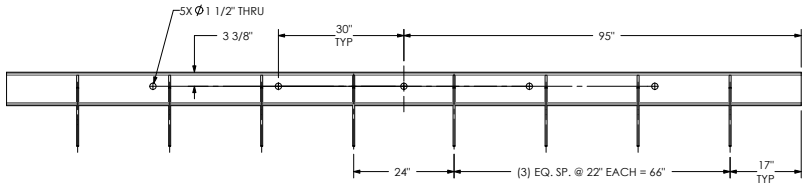
800 626 4653
ejco.com

CHANNEL TYPE R 15' 10" W/BOLT SETS

03170155



CHANNEL 15' 10" GALVANIZED



Product Number

03170150

Design Features

- Materials
 - Steel-A36
- Design Load
- Open Area
- Coating
 - Galvanized
- √ Designates Machined Surface

Reference Material

- 03170150
- Estimated Weight: 168 LBS
- Country of Origin: USA

Drawing Revision

06/10/2015 Designer: DB
Revised By:

Disclaimer

Weights (lbs/kg), dimensions (inches/mm) and drawings provided for your guidance. We reserve the right to modify specifications without prior notice.

CONFIDENTIAL: This drawing is the property of EJ Group, Inc. and embodies confidential information, registered marks, patents, trade secret information, and/or know how that is the property of EJ Group, Inc. Copyright © 2012 EJ Group, Inc. All rights reserved.

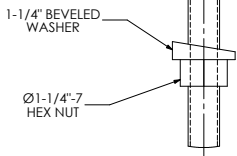
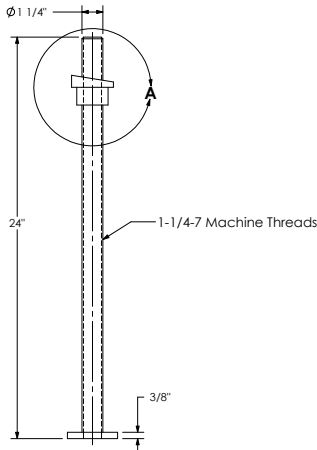
Contact

800 626 4653
ejco.com

03170150

Quantity: 1

TYPE R BOLT SET GALV



DETAIL A

Product Number

03180201

Design Features

- Materials
 - Steel-A36
- Design Load
- Open Area
- Coating
 - Galvanized
- √ Designates Machined Surface

Reference Material

- NPR14-4177
- Estimated Weight: 11 LBS
- Country of Origin: USA

Drawing Revision

10/17/2014 Designer: RKC
Revised By:

Disclaimer

Weights (lbs/kg), dimensions (inches/mm) and drawings provided for your guidance. We reserve the right to modify specifications without prior notice.

CONFIDENTIAL: This drawing is the property of EJ Group, Inc. and embodies confidential information, registered marks, patents, trade secret information, and/or know how that is the property of EJ Group, Inc. Copyright © 2012 EJ Group, Inc. All rights reserved.

Contact

800 626 4653
ejco.com

03180201

Quantity: 5

Disclaimer

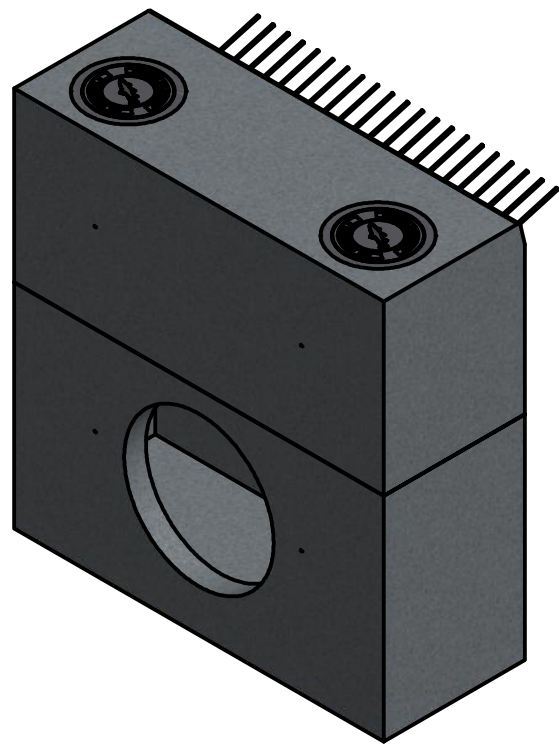
Weight (lbs/kg), dimensions (inches/mm) and drawings provided for your guidance. We reserve the right to modify specifications without prior notices

CONFIDENTIAL: This drawing is the property of EJ GROUP, Inc., and embodies confidential information, registered marks, patents, trade secret information, and/or know how that is the property of EJ GROUP, Inc. Copyright 2016 EJ GROUP, Inc. All rights reserved

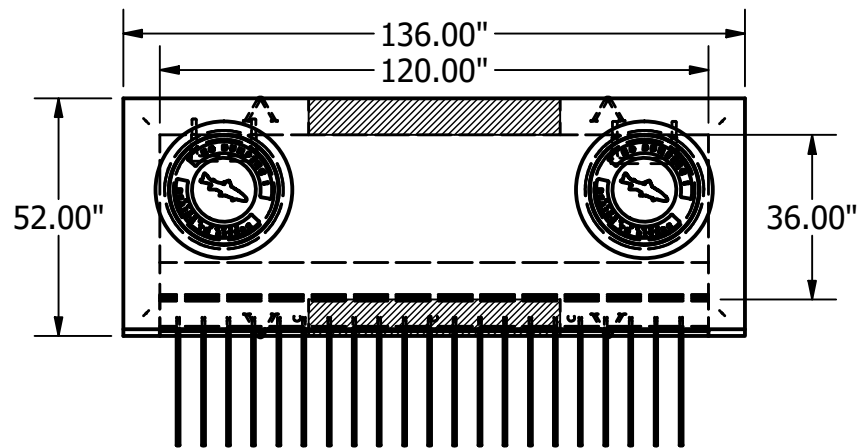
Contact

800 626 4653
ejco.com

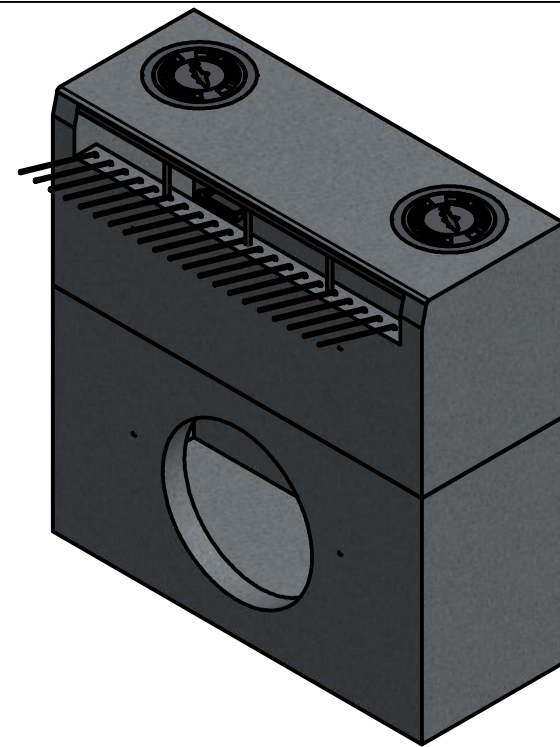
K:\Engineering - Manholes\Projects\Frazer Meadows\INLET S-4 (15) - 10' TYPE R\INLET S-4 (15) - 10' Type R - Base & Top - DRAWING



ISO - BACK/LEFT

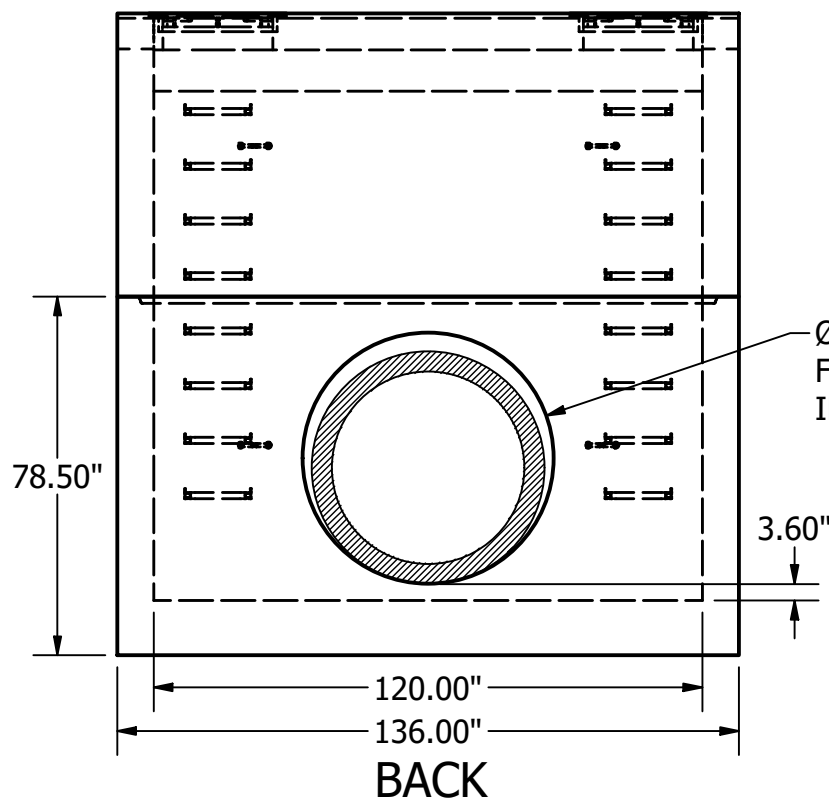


PLAN

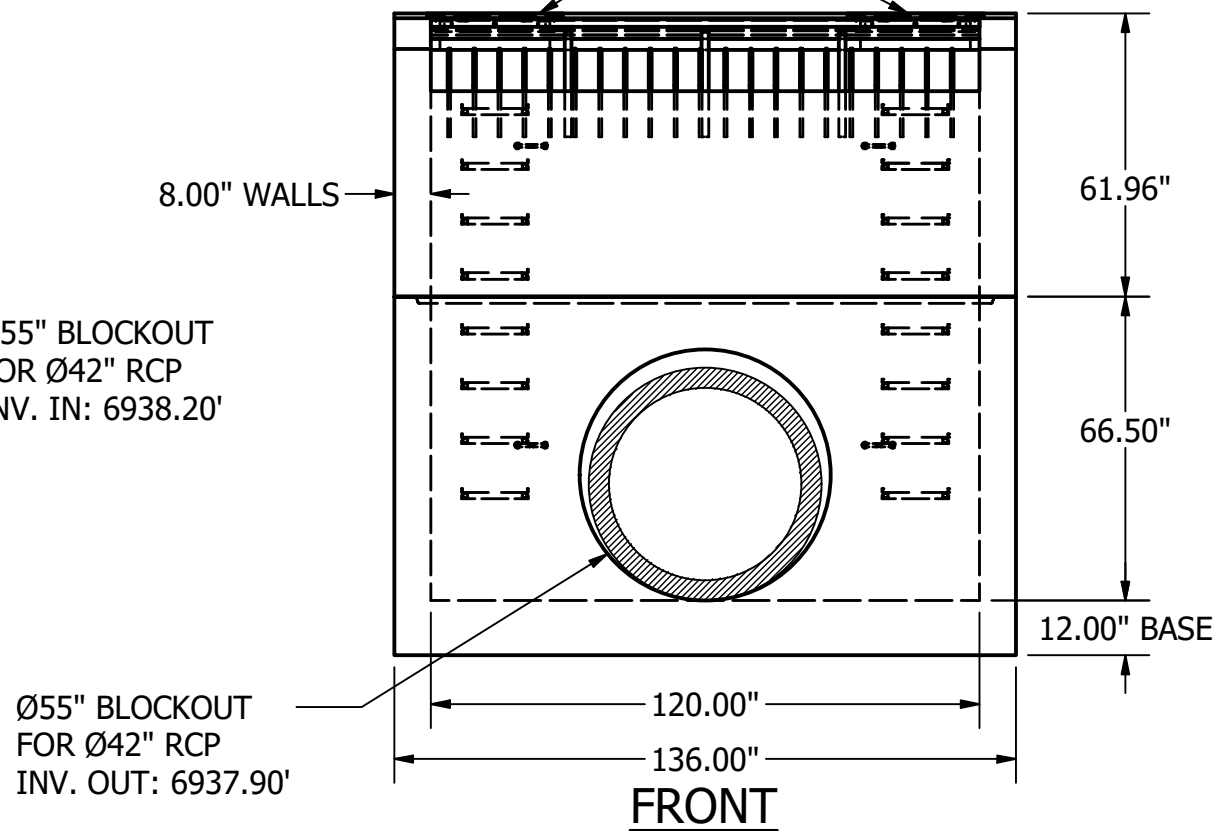


ISO - FRONT/RIGHT

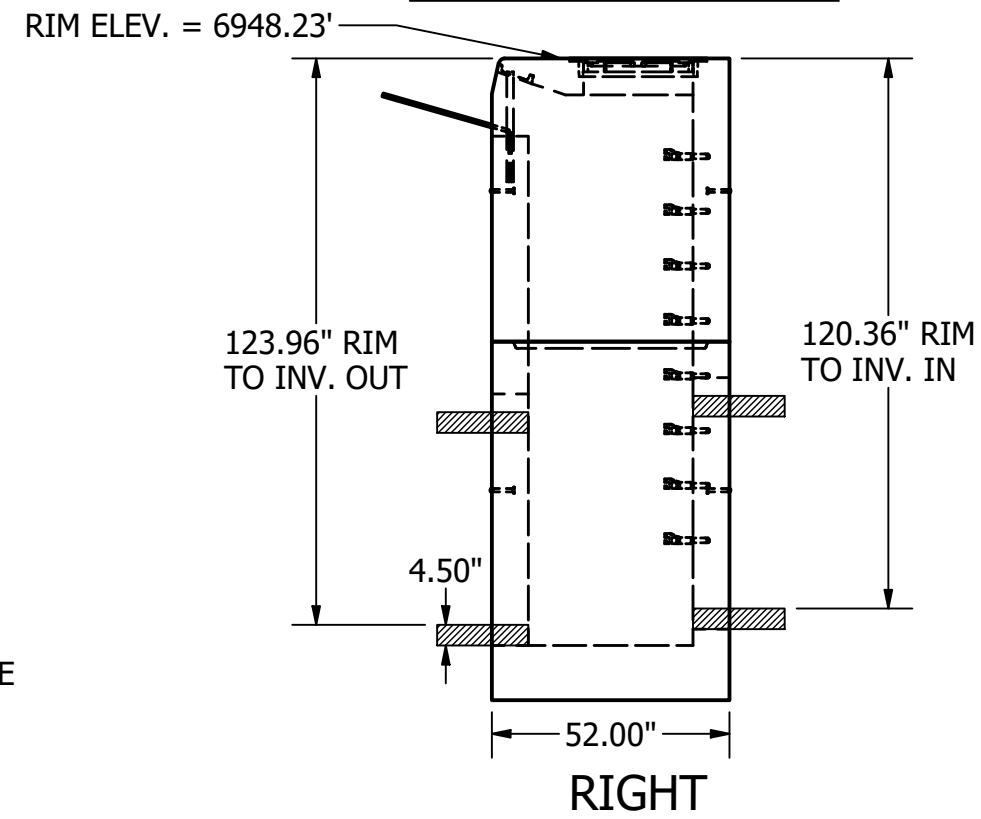
- EJ 2405A Ø24" STORM FISH "NO DUMPING" COVERS
- EJ 2416Z Ø24" X 4" RINGS (CAST IN)



BACK




FRONT



RIGHT

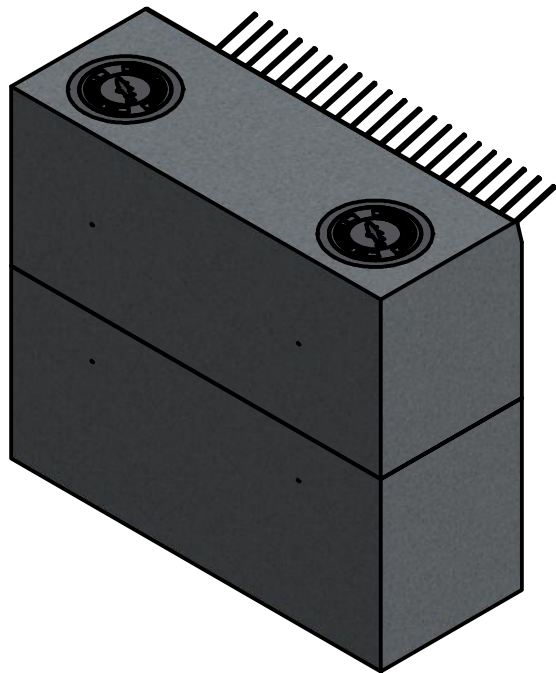
- NOTES:
1. FOR RECTANGULAR STRUCTURES WE FOLLOW ASTM C913
 2. CONCRETE STRENGTH: 5,000 PSI
 3. ESTIMATED WEIGHT TOP: 16,200 LBS
 4. ESTIMATED WEIGHT BASE: 23,200 LBS
 5. STEPS: MA INDUSTRIES PS2-PF @ 12" O.C.
 6. LIFTING: CTS E-LIFT UTILITY ANCHORS - TOP: 8G (QTY:4); BASE 8G (QTY:4)
 7. REBAR TYPE: EPOXY COATED



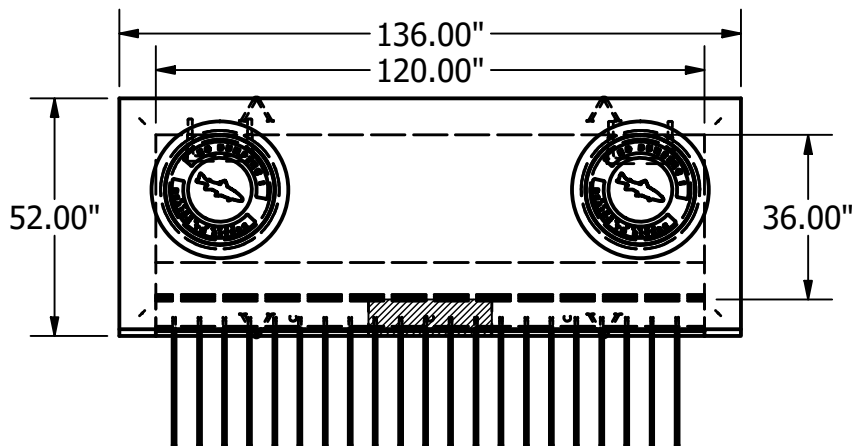
 9455 BOSTON COURT HENDERSON, CO 80640 303-853-8053	FRAZEE FALCON MEADOWS	
	S-4 (15) 10' Type R	
THIS BAR IS ONE INCH ON ORIGINAL DRAWING 0 1"	DRAWN BY TAVI K	DWG NO NAME - 10' Type R - Base & Top - DRAWINGS
IF THIS BAR IS NOT ONE INCH ADJUST SCALE	SCALE 1 / 42	DATE 10/05/2021
		REV FORTERRA PROJECT NO. 7021365MH1

SUBMITTAL

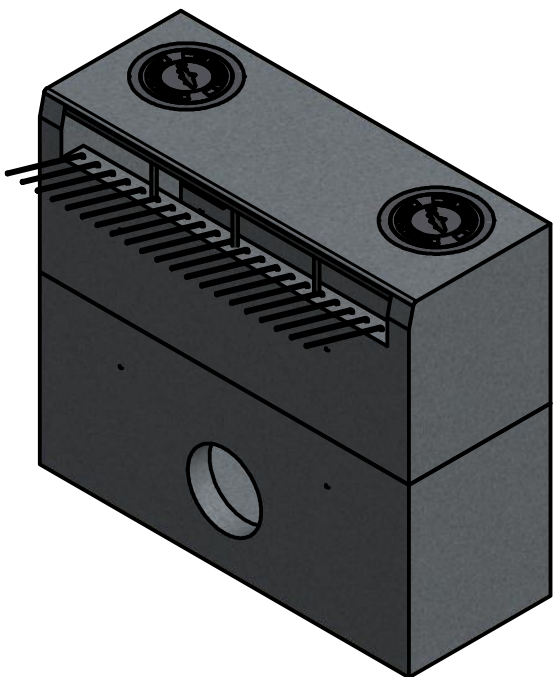
K:\Engineering - Manholes\Projects\Frazer Meadows\INLET S-4 (16) - 10' TYPE R\INLET S-4 (16)- 10' Type R - Base & Top - DRAWING



ISO - BACK/LEFT

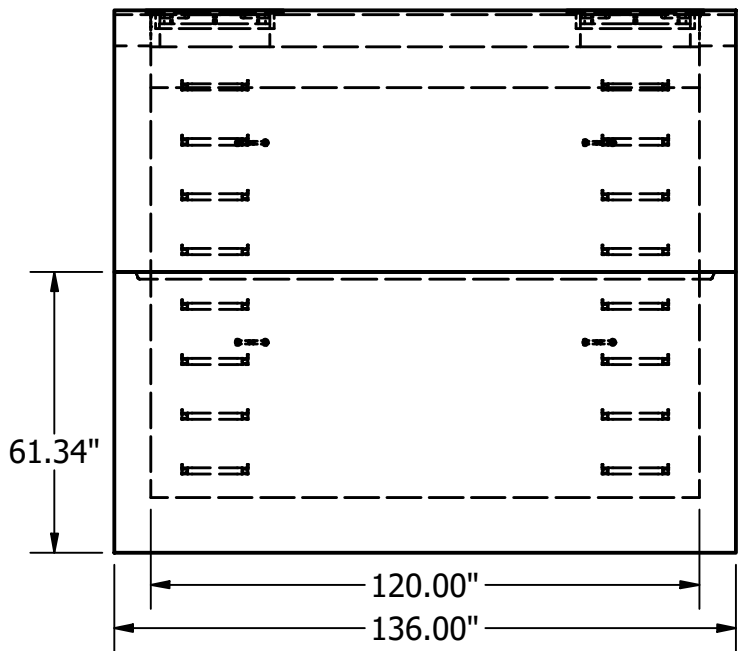


PLAN

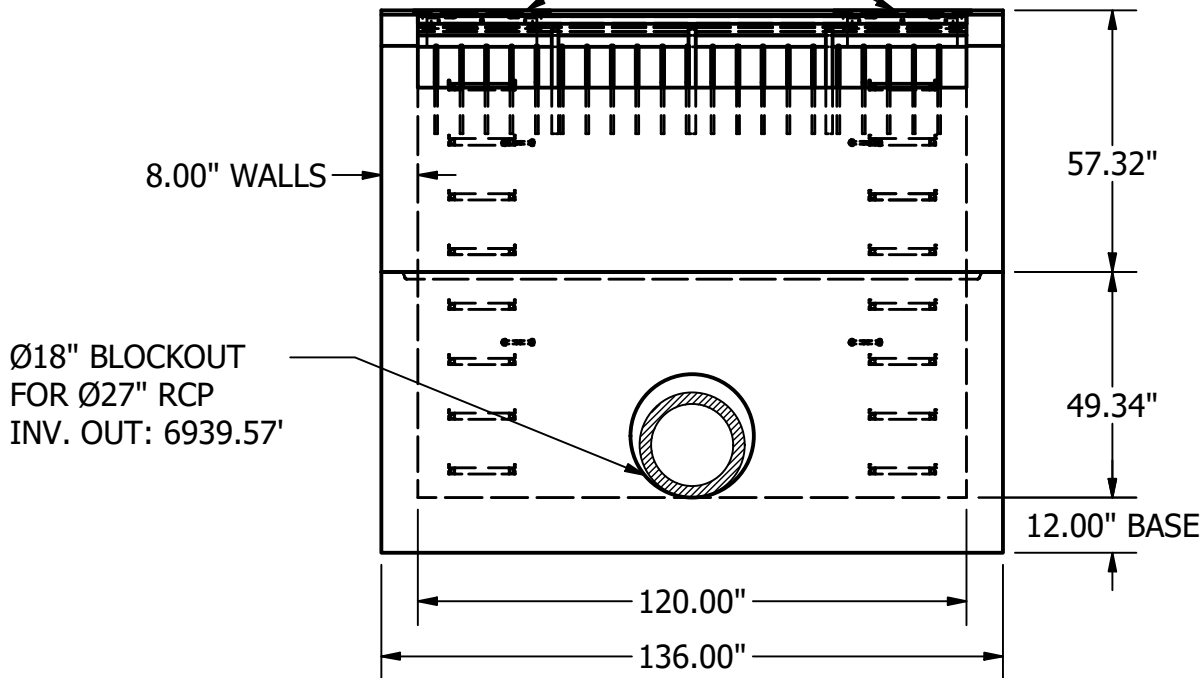


ISO - FRONT/RIGHT

EJ 2405A Ø24" STORM FISH "NO DUMPING" COVERS
EJ 2416Z Ø24" X 4" RINGS (CAST IN)

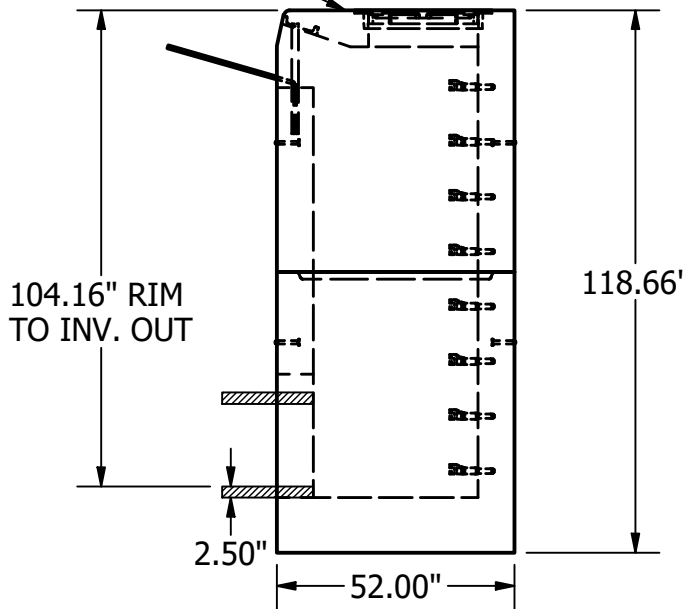


BACK



FRONT

RIM ELEV. = 6948.25'



RIGHT

- NOTES:
1. FOR RECTANGULAR STRUCTURES WE FOLLOW ASTM C913
 2. CONCRETE STRENGTH: 5,000 PSI
 3. ESTIMATED WEIGHT TOP: 15,000 LBS
 4. ESTIMATED WEIGHT BASE: 19,000 LBS
 5. STEPS: MA INDUSTRIES PS2-PF @ 12" O.C.
 6. LIFTING: CTS E-LIFT UTILITY ANCHORS - TOP: 8G (QTY:4); BASE 8G (QTY:4)
 7. REBAR TYPE: EPOXY COATED



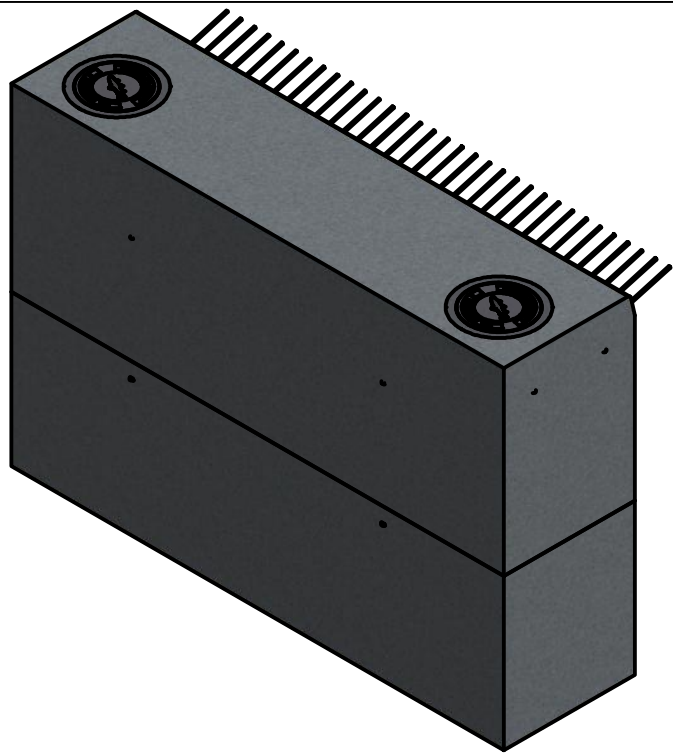
FORTERRA
9455 BOSTON COURT
HENDERSON, CO 80640
303-853-8053

THIS BAR IS ONE INCH ON ORIGINAL DRAWING
0 1"
IF THIS BAR IS NOT ONE INCH ADJUST SCALE

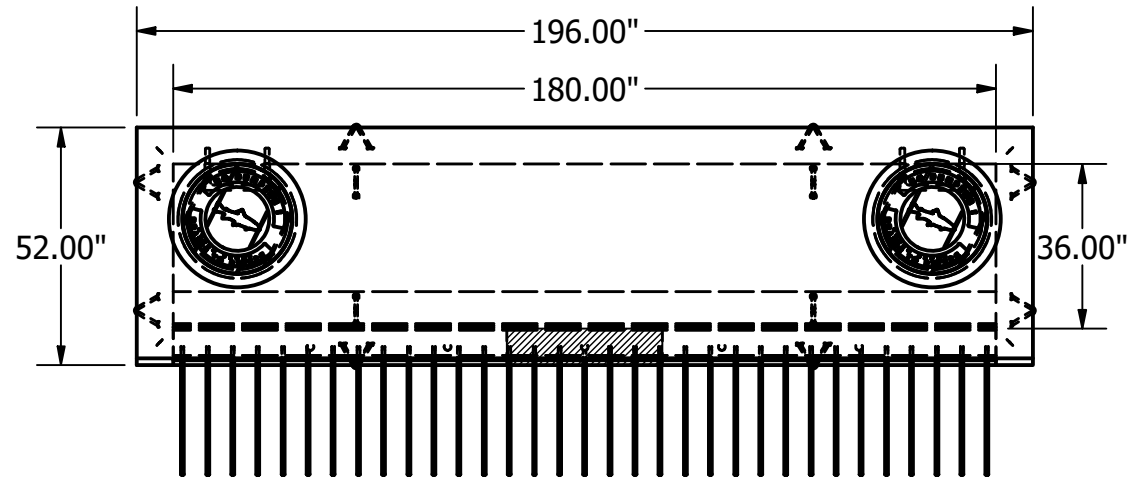
FRAZEE FALCON MEADOWS			
S-4 (16) 10' Type R			
DRAWN BY TAVI K	DWG NO NAME - 10' Type R - Base & Top - DRAWINGS	REV	
SCALE 1 / 42	DATE 10/05/2021	FORTERRA PROJECT NO. 7021365MH1	

SUBMITTAL

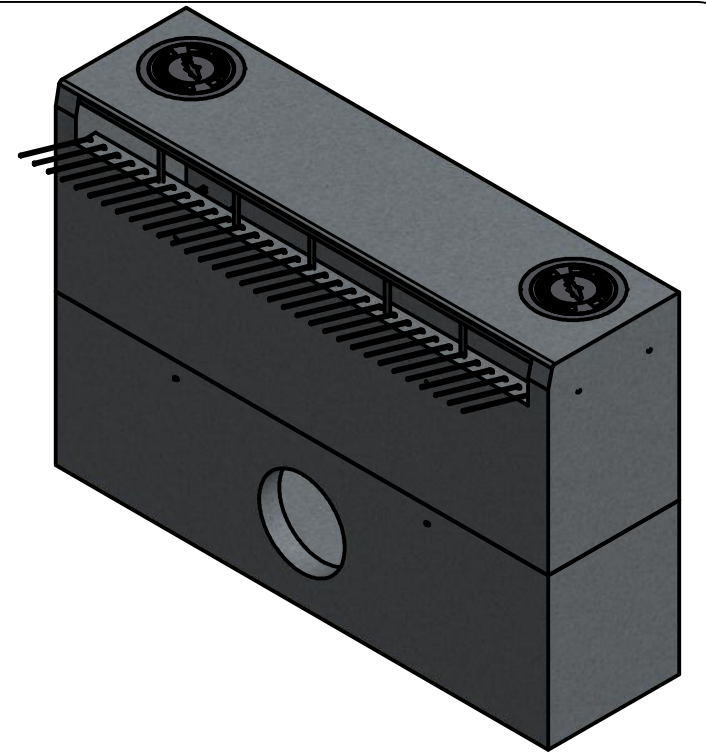
\\10.224.97.167\precast_data\Data\Engineering - Manholes\Projects\Frazee\Falcon Meadows\IN-02 - 15' TYPE R\IN02 - 15' Type R - Base &



ISO - BACK/LEFT

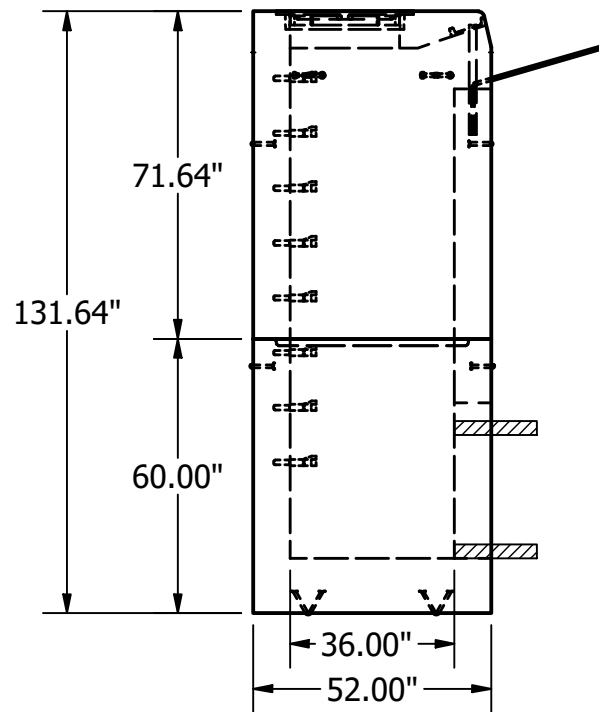


PLAN

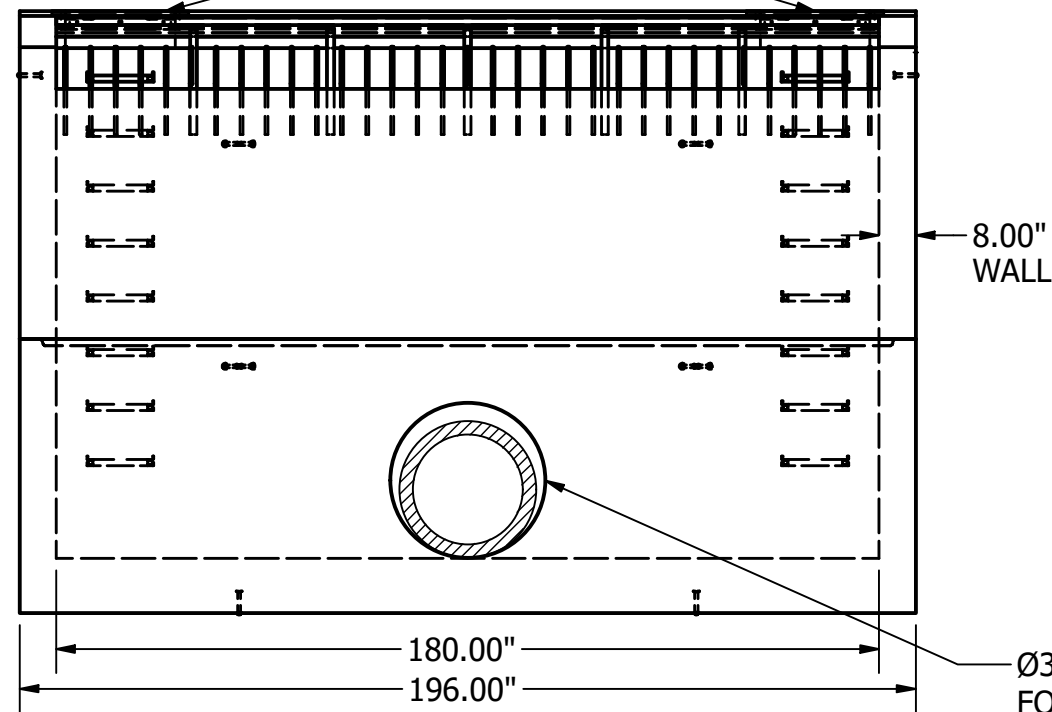


ISO - FRONT/RIGHT

- EJ 24015A Ø24" STORM FISH "NO DUMPING" COVERS
- EJ 2416Z Ø24" X 4" RINGS (CAST IN)

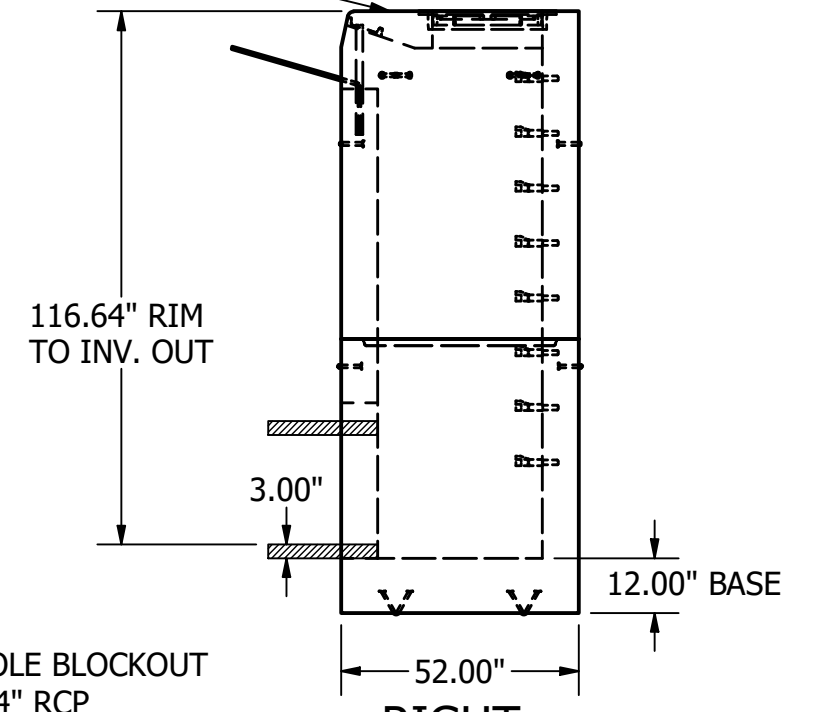


LEFT



FRONT

RIM ELEV. = 6941.57'



RIGHT

- NOTES:
1. FOR RECTANGULAR STRUCTURES WE FOLLOW ASTM C913
 2. CONCRETE STRENGTH: 5,000 PSI
 3. ESTIMATED WEIGHT TOP: 25,400 LBS
 4. ESTIMATED WEIGHT BOTTOM: 25,300 LBS
 5. STEPS: MA INDUSTRIES PS2-PF @ 12" O.C.
 6. LIFTING: CTS E-LIFT UTILITY ANCHORS - TOP - 8G (x4) BASE - 8G (x4)
 7. REBAR TYPE: EPOXY COATED



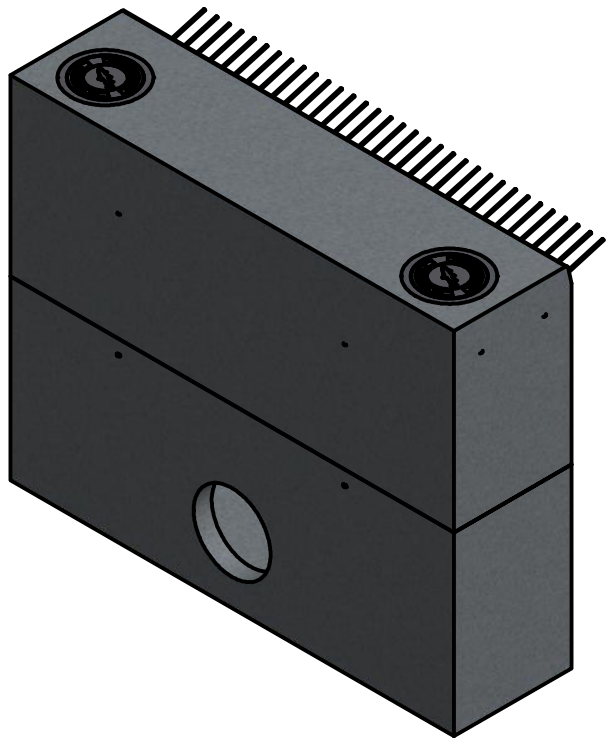
FORTERRA™
9455 BOSTON COURT
HENDERSON, CO 80640
303-853-8053

THIS BAR IS ONE INCH ON ORIGINAL DRAWING
0 1"
IF THIS BAR IS NOT ONE INCH ADJUST SCALE

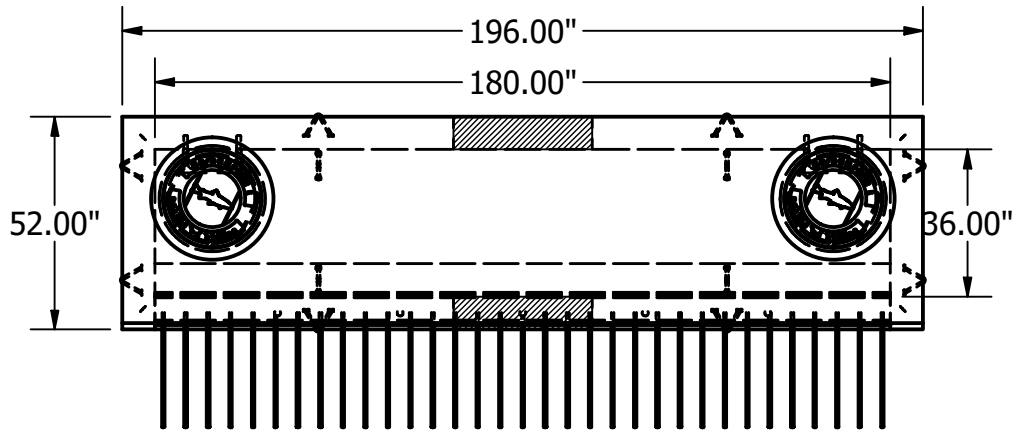
FRAZEE FALCON MEADOWS			
IN 02 15' TYPE R			
DRAWN BY TAVI K	DWG NO - 15' Type R - Base & Top	REV	
SCALE 1 / 42	DATE 10/06/2021	FORTERRA PROJECT NO. 7021365MH1	

SUBMITTAL

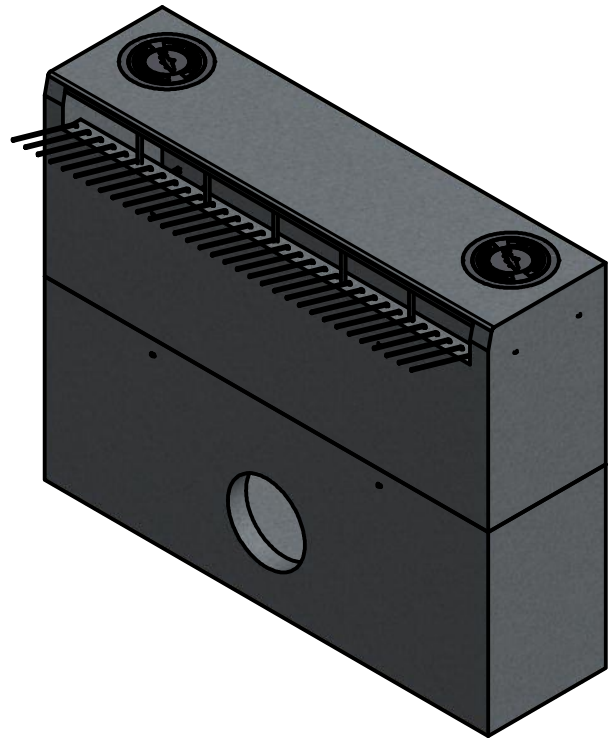
\\10.224.97.167\precast_data\Engineering - Manholes\Projects\Frazees\Falcon Meadows\IN-03 - 15' TYPE R\IN03- 15' Type R - Base &



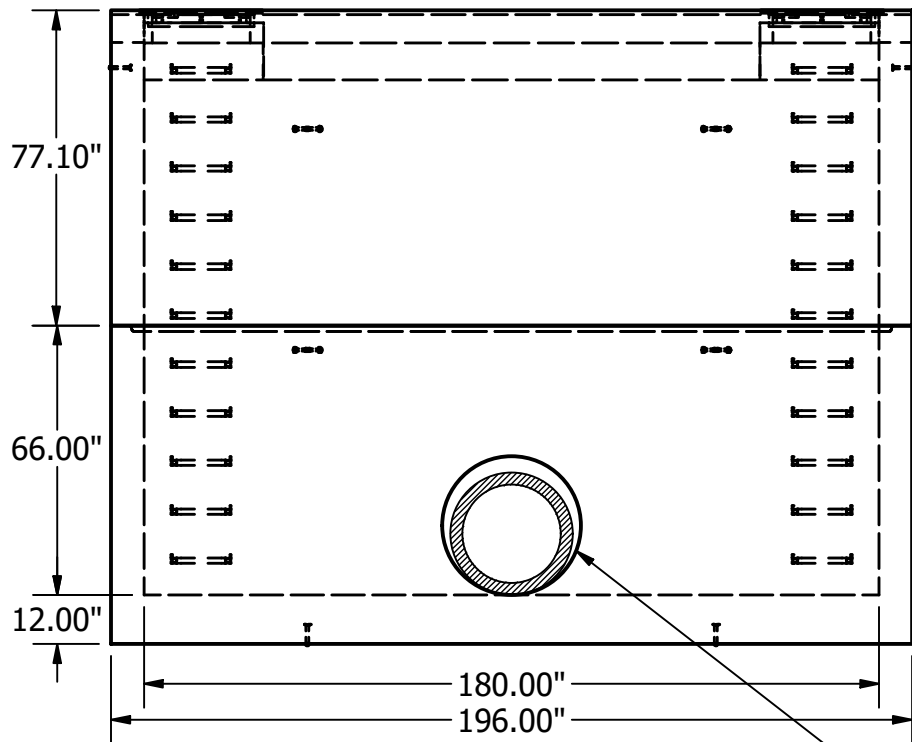
ISO - BACK/LEFT



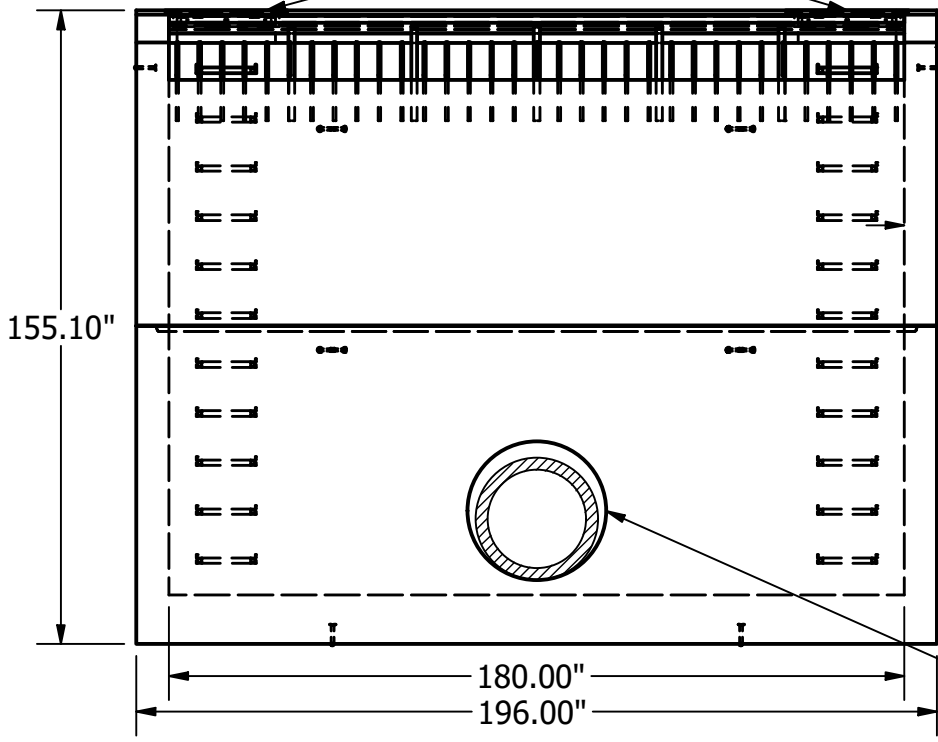
PLAN



ISO - FRONT/RIGHT

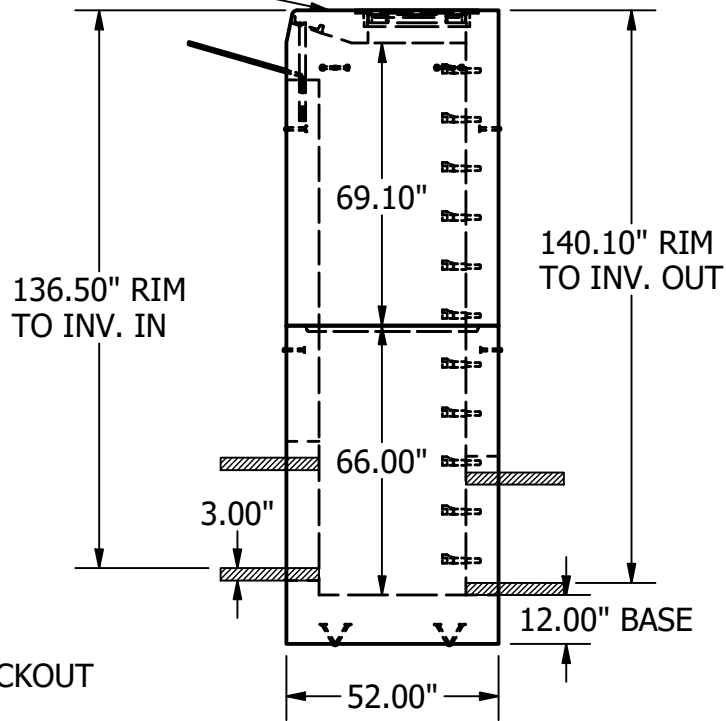


BACK



FRONT

RIM ELEV. = 6941.57'



RIGHT

- NOTES:
1. FOR RECTANGULAR STRUCTURES WE FOLLOW ASTM C913
 2. CONCRETE STRENGTH: 5,000 PSI
 3. ESTIMATED WEIGHT TOP: 27,100 LBS
 4. ESTIMATED WEIGHT BOTTOM: 30,500 LBS
 5. STEPS: MA INDUSTRIES PS2-PF @ 12" O.C.
 6. LIFTING: CTS E-LIFT UTILITY ANCHORS - TOP - 8G (x4) BASE - 8G (x4)
 7. REBAR TYPE: EPOXY COATED

Ø34" HOLE BLOCKOUT
FOR Ø24" RCP
INV. OUT = 6929.94'



9455 BOSTON COURT
HENDERSON, CO 80640
303-853-8053

THIS BAR IS ONE INCH ON ORIGINAL DRAWING
0 1"
IF THIS BAR IS NOT ONE INCH ADJUST SCALE

FRAZEE FALCON MEADOWS			
IN 03 15' TYPE R			
DRAWN BY TAVI K	DWG NO - 15' Type R - Base & Top	REV	
SCALE 1 / 47	DATE 10/06/2021	FORTERRA PROJECT NO. 7021365MH1	

SUBMITTAL