



PAINT COLORS:			
 <p>SW 7006 Extra White</p> <p>COLOR ABOVE SHALL BE USED FOR COLORS DESIGNATED "EXTRA WHITE" IN KEYNOTES</p>	 <p>SW 7048 Urbane Bronze</p> <p>COLOR ABOVE SHALL BE USED FOR COLORS DESIGNATED "DARK BRONZE" IN KEYNOTES</p>	 <p>SW 6213 Halcyon Green</p> <p>COLOR ABOVE SHALL BE USED FOR COLORS DESIGNATED "HALCYON GREEN" IN KEYNOTES</p>	 <p>SW 2807 Rookwood Medium Brown</p> <p>COLOR ABOVE SHALL BE USED FOR COLORS DESIGNATED "MEDIUM BROWN" IN KEYNOTES</p>
MATERIALS:			
C5  <p>FIBER CEMENT (ALTERNATING 4" & 10") LAP SIDING PAINTED: HALCYON GREEN</p>	C6  <p>FIBER CEMENT 6" LAP SIDING PAINTED: ROCKWOOD MEDIUM BROWN</p>	C8  <p>FIBER CEMENT 6" LAP SIDING PAINTED: EXTRA WHITE</p>	E  <p>ADHERED STONE VENEER, SPLIT FACED TRAVERTINE (COLOR AND PATTERN TO BE SELECTED BY OWNER)</p>
D3  <p>FIBER CEMENT PANEL (SMOOTH) & BATTEN PAINTED (EXTRA WHITE)</p>	F  <p>SYNTHETIC WOOD LOOK, 8" LAP SIDING (OAK COLOR TO BE SELECTED BY OWNER)</p>		
LIGHTING:			
K  <p>DECORATIVE SCENCE WALL LIGHT, 5' TALL ATTACHED AT EACH SIDE OF BREEZEWAY ENTRY</p>	K1  <p>BREEZEWAY AREA LIGHT MOUNTED ABOVE BREEZEWAY OPENING AT 3RD LEVEL. IN BLACK COLOR WITH GOOSENECK MOUNT</p>	K2  <p>UNIT BALCONY LIGHT</p>	


MATERIAL BOARD
 NOT TO SCALE

ARCHITECT:



Office:

8830 Macon Highway
Building 300
Athens, GA 30606

DEVELOPER:



Corporate Office:

101 South New York Avenue, Unit 211
Winter Park, FL 32789
PH: (407) 752-9004

Operations Office:

8830 Macon Highway
Building 300
Athens, GA 30606
PH: (407) 752-9004

Information: www.hillpointe.com

24- HOUR CONTACT:

Marcus Wiedower
P: (706) 254-3251
Email: mwiedower@hillpointe.com

PROJECT:

**POINTE GRAND
PETERSON at
COLORADO
SPRINGS**

PETERSON ROAD
COLORADO SPRINGS, COLORADO

KSH# 257003

HP# 26xxxx

SHEET TITLE:

**MATERIAL
BOARD**

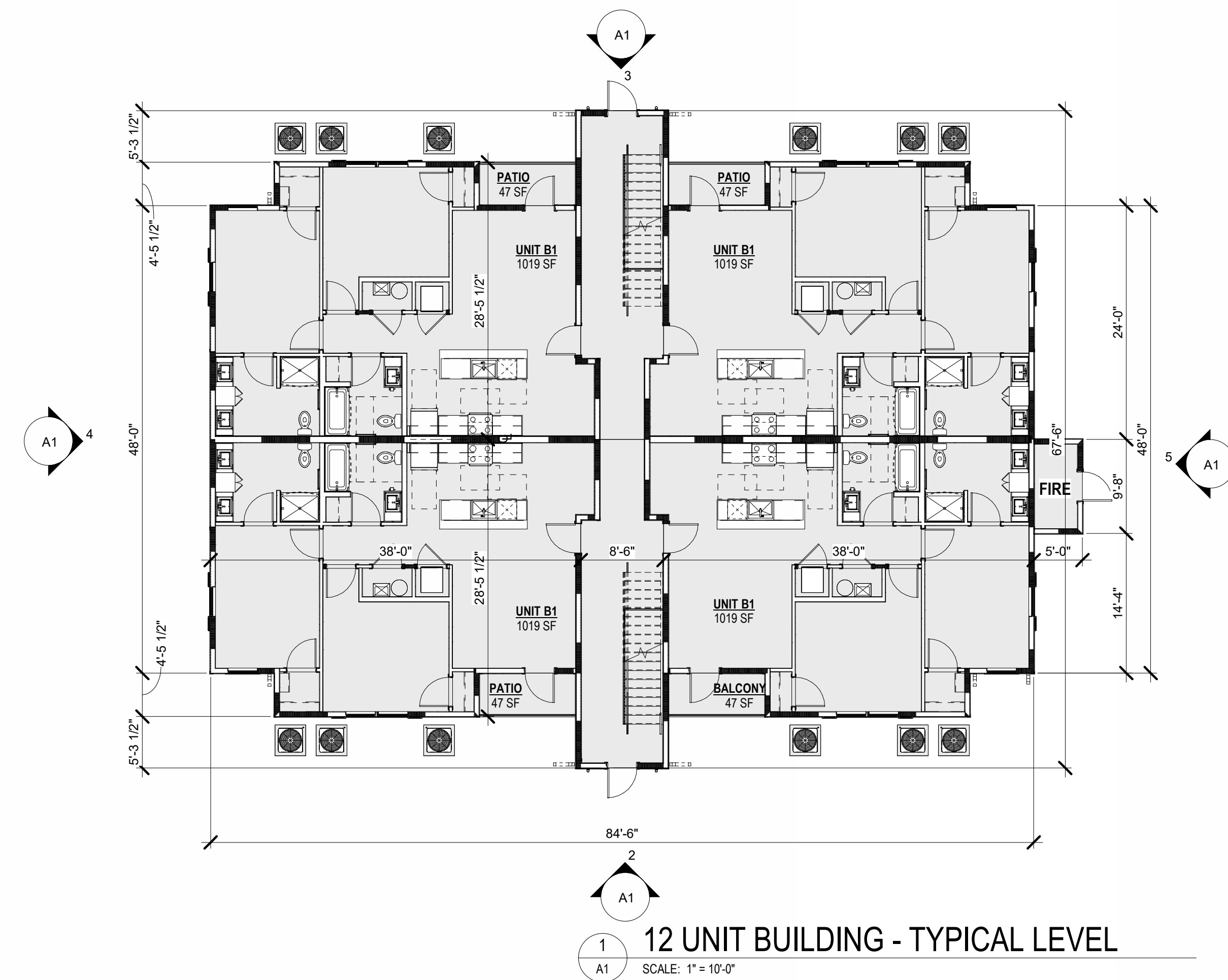
ARCHITECT SEAL:

DRAWING DATE: 03/17/26

SITE SUBMITTAL SET

REVISIONS		
No.	Issue	Date

SHEET: **A0**



Office:
8830 Macon Highway
Building 300
Athens, GA 30606

DEVELOPER:
HILLPOINTE

Corporate Office:
101 South New York Avenue, Unit 211
Winter Park, FL 32789
PH: (407) 752-9004

Operations Office:
8830 Macon Highway
Building 300
Athens, GA 30606
PH: (407) 752-9004

Information: www.hillpointe.com

24- HOUR CONTACT:
Marcus Wiedower
P: (706) 254-3251
Email: mwiedower@hillpointe.com

PROJECT:
**POINTE GRAND
PETERSON at
COLORADO
SPRINGS**

PETERSON ROAD
COLORADO SPRINGS, COLORADO

KSH# 257003 HP# 26xxxxx

SHEET TITLE:
**12 UNIT
BUILDING - PLAN
& ELEVATIONS**

ARCHITECT SEAL:

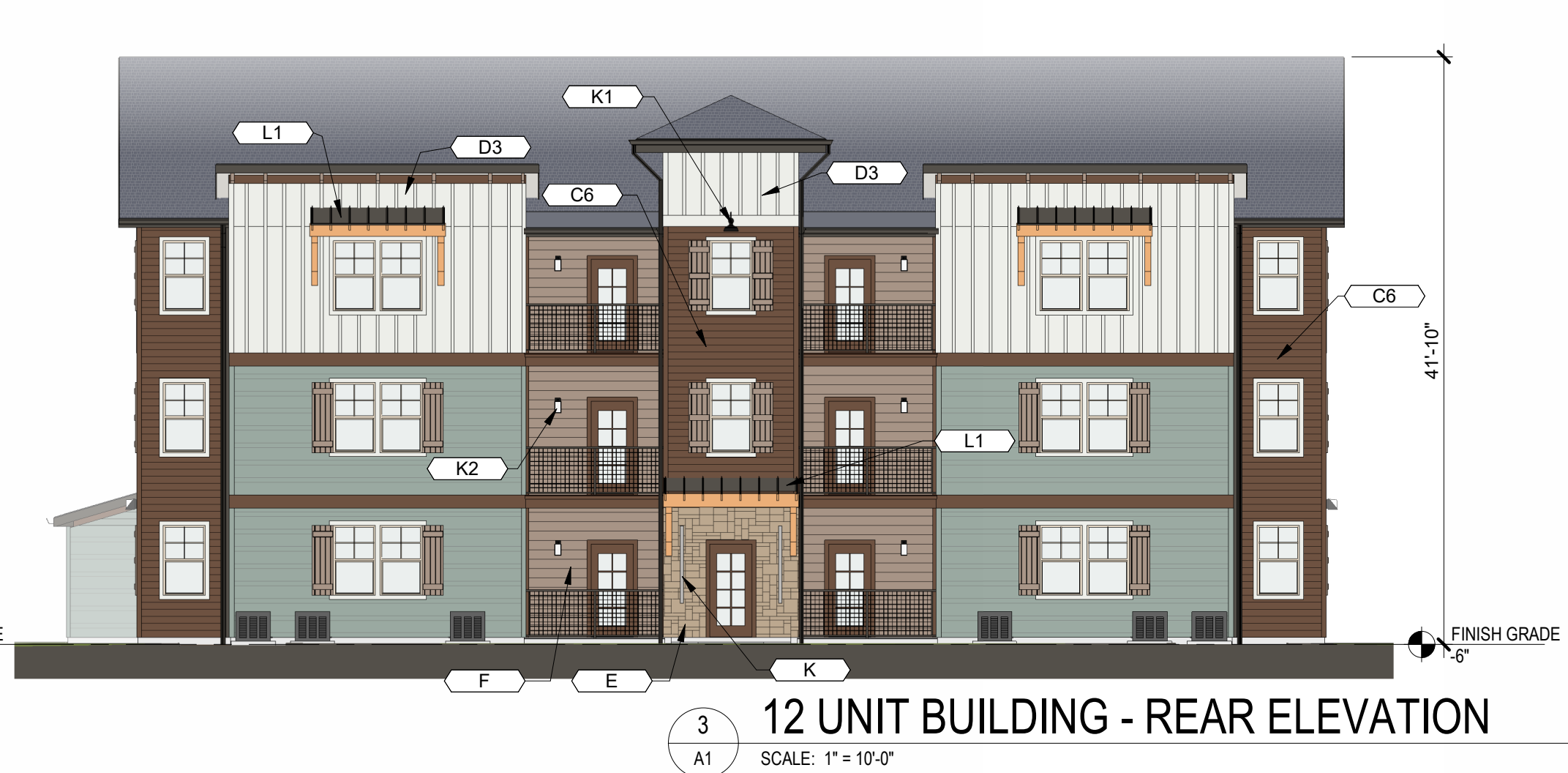
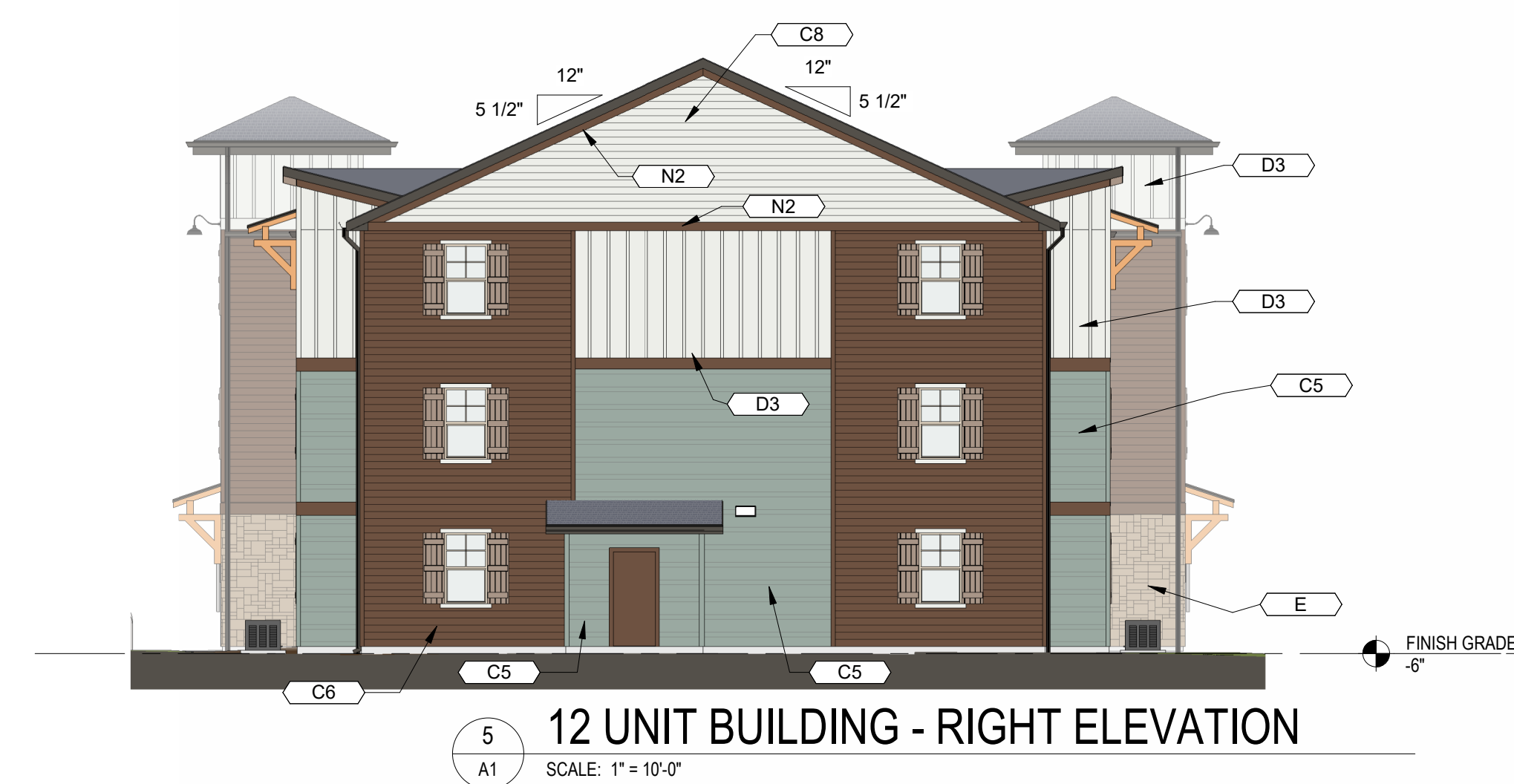
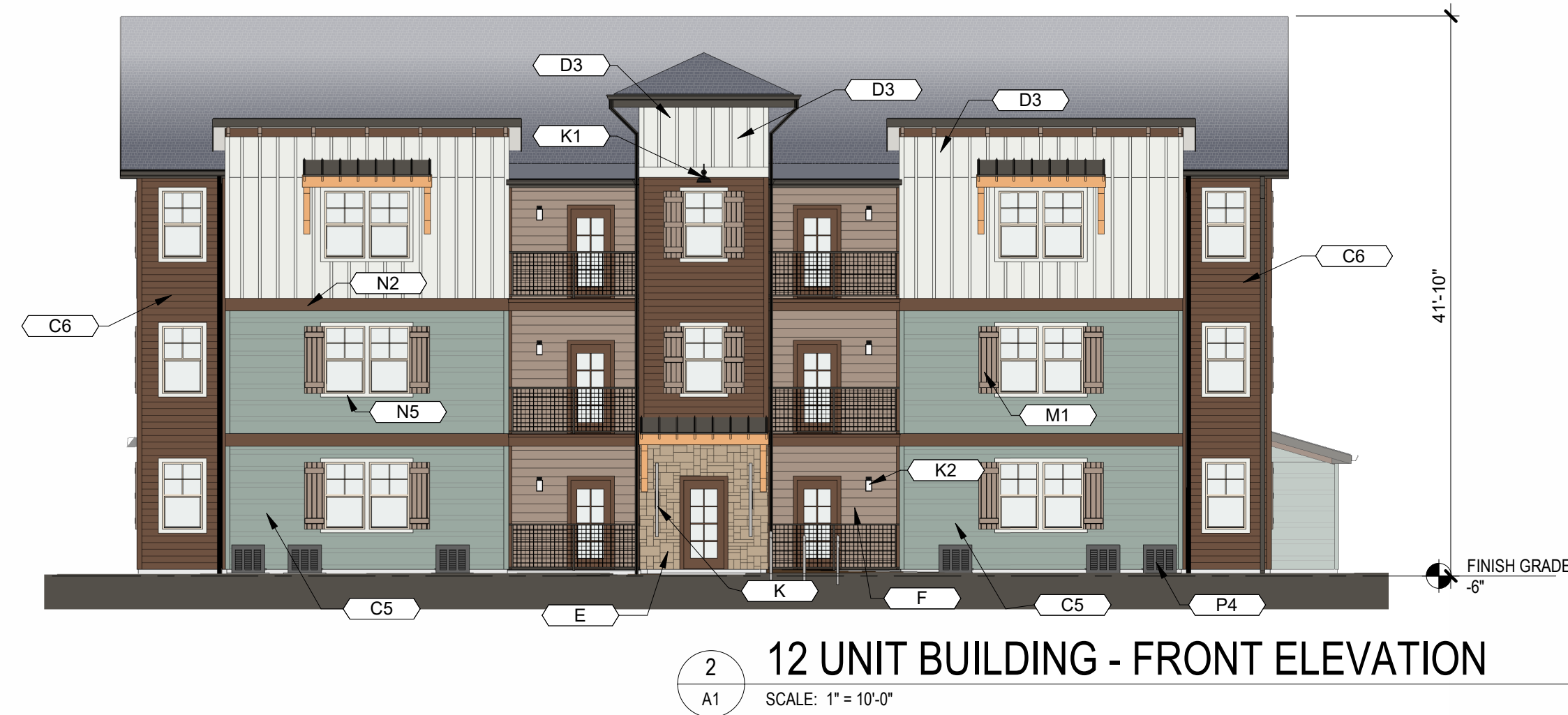
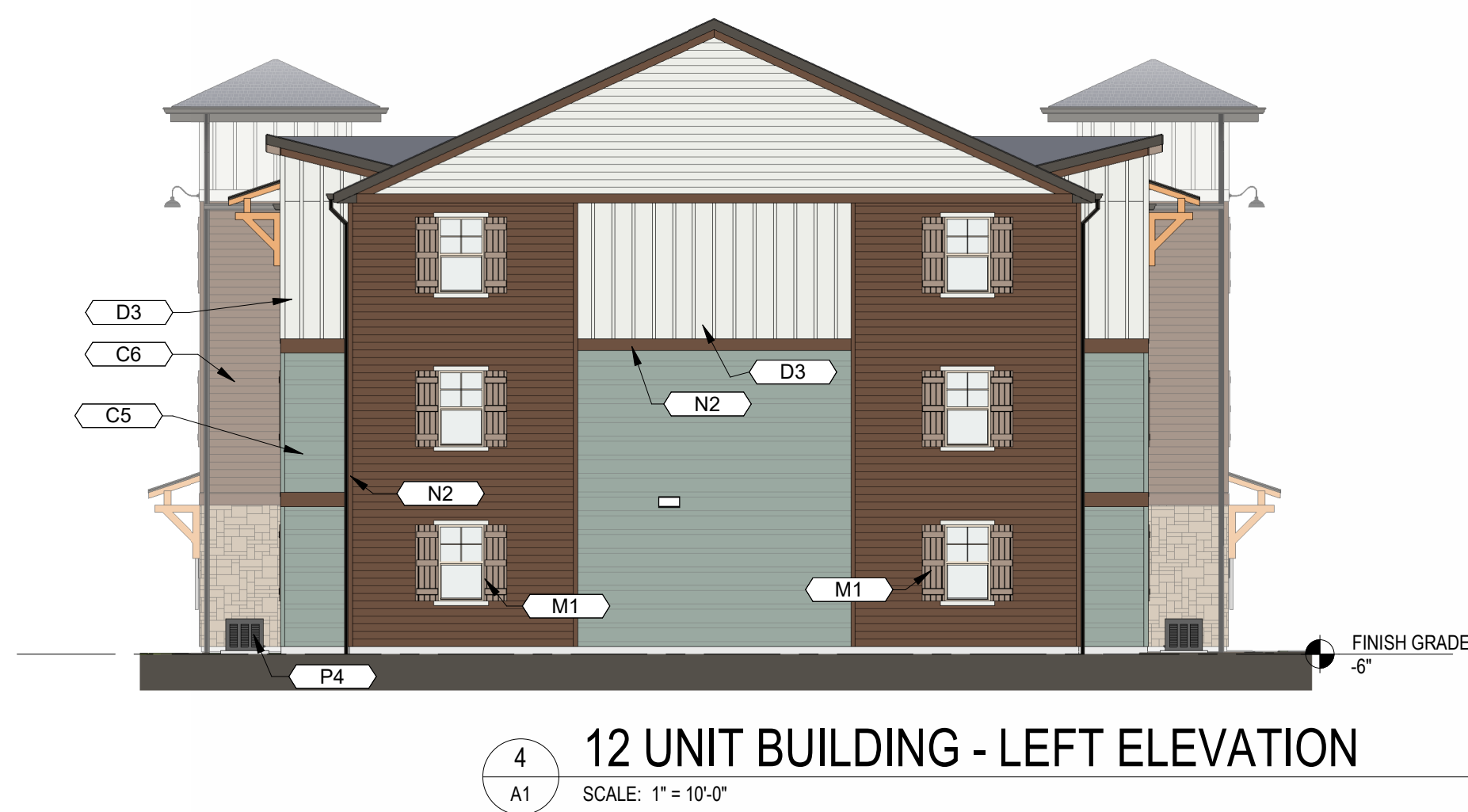
DRAWING DATE: 03/17/26

SITE SUBMITTAL SET

REVISIONS		
No.	Issue	Date

SHEET: A1

KEYNOTES	
TAG	KEYNOTE TEXT
C5	FIBER CEMENT SIDING, 4"/10" LAP ALTERNATING, PAINTED (SW 6213 HALCYON GREEN)
C6	FIBER CEMENT SIDING, 6" LAP, PAINTED (SW 2807 MEDIUM BROWN)
C8	FIBER CEMENT SIDING, 6" LAP, PAINTED (SW 7006 EXTRA WHITE)
D3	FIBER CEMENT BOARD AND BATTEN SIDING, PAINTED (SW 7006 EXTRA WHITE)
E	ADHERED STONE VENEER, SPLIT FACED TRAVERTINE (PATTERN AND COLOR TO BE SELECTED BY OWNER)
F	SYNTHETIC WOOD 8" LAP SIDING, COLOR OAK (TO BE SELECTED BY OWNER)
K	5' VERTICAL LINEAR DECORATIVE COLUMN SCONCE, (2) AT EACH ENTRY COLUMNS (SEE MATERIAL BOARD)
K1	BREEZEWAY AREA LIGHT (SEE MATERIAL BOARD)
K2	BALCONY LIGHTING (SEE MATERIAL BOARD)
L1	STANDING SEAM METAL ROOF, COLOR: BRONZE (TO BE SELECTED BY OWNER)
M1	DECORATIVE BOARD AND BATTEN SHUTTERS, COLOR: WOOD LOOK (TO BE SELECTED BY OWNER)
N2	FIBER CEMENT TRIM/FASCIA PAINTED (SW 2807 MEDIUM BROWN)
N5	FIBER CEMENT TRIM/FASCIA PAINTED (SW 7006 EXTRA WHITE)
P4	AC CONDENSER UNIT, TO BE SCREENED BY PLANTING





Office:

8830 Macon Highway
Building 300
Athens, GA 30606

DEVELOPER:



Corporate Office:

101 South New York Avenue, Unit 211
Winter Park, FL 32789
PH: (407) 752-9004

Operations Office:

8830 Macon Highway
Building 300
Athens, GA 30606
PH: (407) 752-9004

Information: www.hillpointe.com

24- HOUR CONTACT:

Marcus Wiedower
P: (706) 254-3251
Email: mwiedower@hillpointe.com

PROJECT:

**POINTE GRAND
PETERSON at
COLORADO
SPRINGS**

PETERSON ROAD
COLORADO SPRINGS, COLORADO

KSH# 257003

HP# 26xxxxx

SHEET TITLE:

**24 UNIT
BUILDING -
ELEVATIONS**

ARCHITECT SEAL:

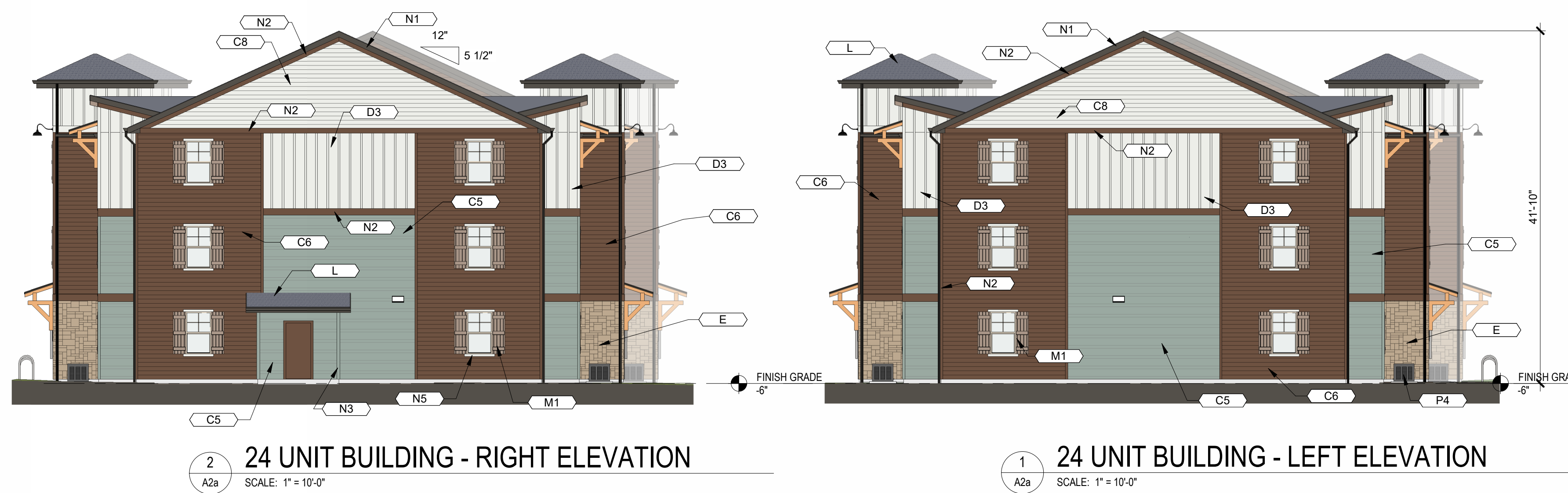
DRAWING DATE: 03/17/26

SITE SUBMITTAL SET

REVISIONS

No.	Issue	Date

SHEET: A2a



2 24 UNIT BUILDING - RIGHT ELEVATION
SCALE: 1" = 10'-0"

1 24 UNIT BUILDING - LEFT ELEVATION
SCALE: 1" = 10'-0"

KEYNOTES	
TAG	KEYNOTE TEXT
C5	FIBER CEMENT SIDING, 4"/10" LAP ALTERNATING, PAINTED (SW 6213 HALCYON GREEN)
C6	FIBER CEMENT SIDING, 6" LAP, PAINTED (SW 2807 MEDIUM BROWN)
C8	FIBER CEMENT SIDING, 6" LAP, PAINTED (SW 7006 EXTRA WHITE)
D3	FIBER CEMENT BOARD AND BATTEN SIDING, PAINTED (SW 7006 EXTRA WHITE)
E	ADHERED STONE VENEER, SPLIT FACED TRAVERTINE, (PATTERN AND COLOR TO BE SELECTED BY OWNER)
L	ASPHALT DIMENSIONAL HIGH PROFILE ROOFING SHINGLES, COLOR: CHARCOAL (TO BE SELECTED BY OWNER)
M1	DECORATIVE BOARD AND BATTEN SHUTTERS, COLOR: WOOD LOOK (TO BE SELECTED BY OWNER)
N1	FIBER CEMENT TRIM/FASCIA PAINTED (SW 7048 URBANE BRONZE)
N2	FIBER CEMENT TRIM/FASCIA PAINTED (SW 2807 MEDIUM BROWN)
N3	FIBER CEMENT TRIM/FASCIA PAINTED (SW 6213 HALCYON GREEN)
N5	FIBER CEMENT TRIM/FASCIA PAINTED (SW 7006 EXTRA WHITE)
P4	AC CONDENSER UNIT, TO BE SCREENED BY PLANTING

KEYNOTES	
TAG	KEYNOTE TEXT
C5	FIBER CEMENT SIDING, 4"X10" LAP ALTERNATING, PAINTED (SW 6213 HALCYON GREEN)
C6	FIBER CEMENT SIDING, 6" LAP, PAINTED (SW 2807 MEDIUM BROWN)
C8	FIBER CEMENT SIDING, 6" LAP, PAINTED (SW 7006 EXTRA WHITE)
D3	FIBER CEMENT BOARD AND BATTEN SIDING, PAINTED (SW 7006 EXTRA WHITE)
E	ADHERED STONE VENEER, SPLIT FACED TRAVERTINE, (PATTERN AND COLOR TO BE SELECTED BY OWNER)
F	SYNTHETIC WOOD 8" LAP SIDING, COLOR OAK (TO BE SELECTED BY OWNER)
G	VINYL WINDOW (4 OVER 1 MUNTIN PATTERN)
G18	METAL CLAD FULL LITE DOOR, PAINTED (SW 2807 MEDIUM BROWN)
H	METAL GUARDRAIL, COLOR: (TO MATCH SW 7048 DARK BRONZE)
K	5" VERTICAL LINEAR DECORATIVE COLUMN SCONCE, (2) AT EACH ENTRY COLUMNS (SEE MATERIAL BOARD)

KEYNOTES	
TAG	KEYNOTE TEXT
K1	BREEZEWAY AREA LIGHT (SEE MATERIAL BOARD)
K2	BALCONY LIGHTING (SEE MATERIAL BOARD)
L	ASPHALT DIMENSIONAL HIGH PROFILE ROOFING SHINGLES, COLOR: CHARCOAL (TO BE SELECTED BY OWNER)
L1	STANDING SEAM METAL ROOF, COLOR: BRONZE (TO BE SELECTED BY OWNER)
M1	DECORATIVE BOARD AND BATTEN SHUTTERS, COLOR: WOOD LOOK (TO BE SELECTED BY OWNER)
N1	FIBER CEMENT TRIM/FASCIA PAINTED (SW 7048 URBANE BRONZE)
N2	FIBER CEMENT TRIM/FASCIA PAINTED (SW 2807 MEDIUM BROWN)
N3	FIBER CEMENT TRIM/FASCIA PAINTED (SW 6213 HALCYON GREEN)
N5	FIBER CEMENT TRIM/FASCIA PAINTED (SW 7006 EXTRA WHITE)
P4	AC CONDENSER UNIT, TO BE SCREENED BY PLANTING

ARCHITECT:



Office:

8830 Macon Highway
Building 300
Athens, GA 30606

DEVELOPER:



Corporate Office:

101 South New York Avenue, Unit 211
Winter Park, FL 32789
PH: (407) 752-9004

Operations Office:

8830 Macon Highway
Building 300
Athens, GA 30606
PH: (407) 752-9004

Information: www.hillpointe.com

24- HOUR CONTACT:

Marcus Wiedower
P: (706) 254-3251
Email: mwiedower@hillpointe.com

PROJECT:

POINTE GRAND PETERSON at COLORADO SPRINGS

PETERSON ROAD
COLORADO SPRINGS, COLORADO

KSH# 257003

HP# 26xxxxx

SHEET TITLE:

TYPICAL MULTIFAMILY - ENLARGED ELEVATIONS

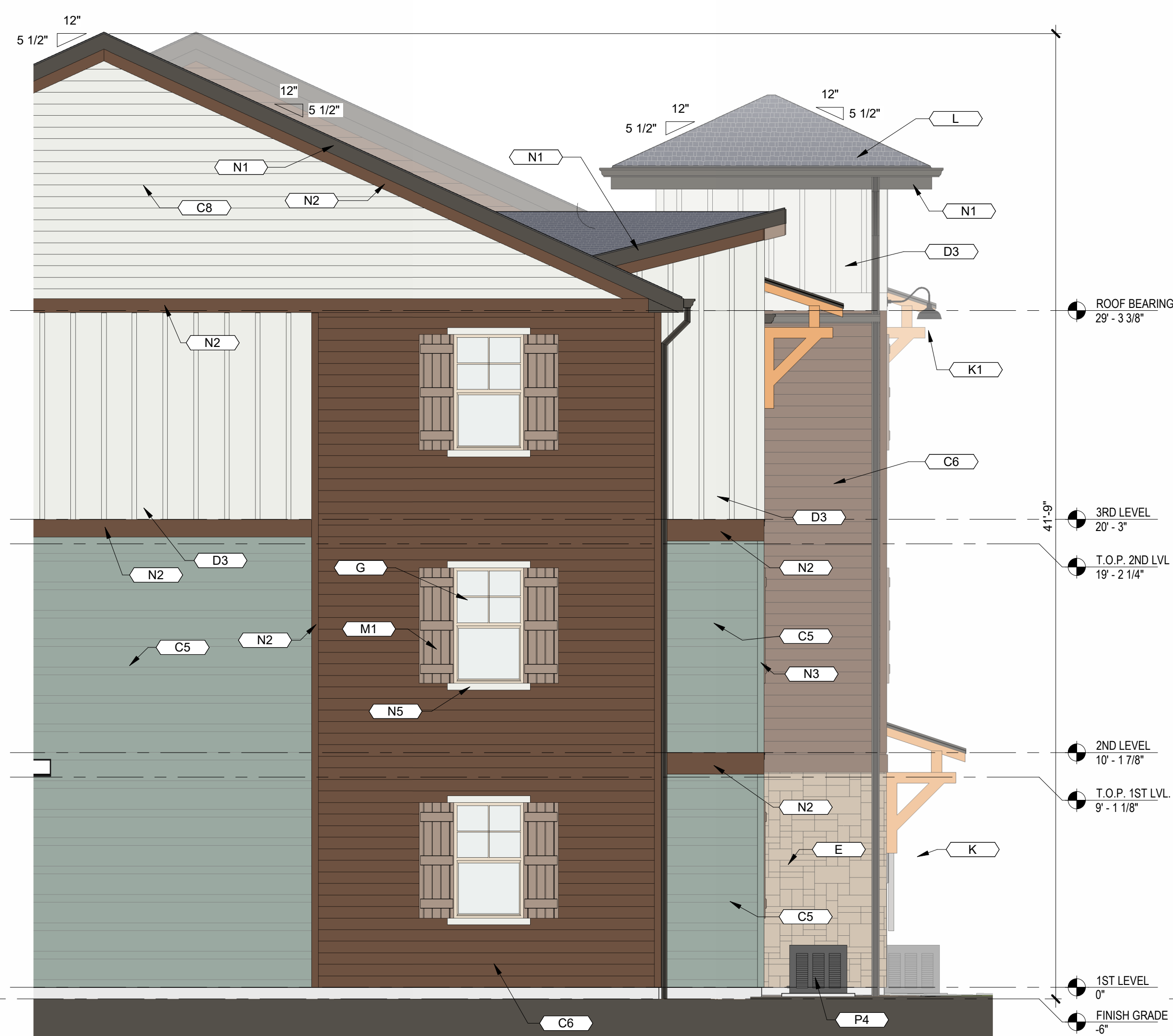
ARCHITECT SEAL:

DRAWING DATE: 03/17/26

SITE SUBMITTAL SET

REVISIONS		
No.	Issue	Date

SHEET: **A2b**



2 TYPICAL MULTIFAMILY - ENLARGED SIDE ELEVATION



1 TYPICAL MULTIFAMILY - ENLARGED FRONT ELEVATION



Office:
8830 Macon Highway
Building 300
Athens, GA 30606

DEVELOPER:
HILLPOINTE

Corporate Office:
101 South New York Avenue, Unit 211
Winter Park, FL 32789
PH: (407) 752-9004

Operations Office:
8830 Macon Highway
Building 300
Athens, GA 30606
PH: (407) 752-9004

Information: www.hillpointe.com

24- HOUR CONTACT:
Marcus Wiedower
P: (706) 254-3251
Email: mwiedower@hillpointe.com

PROJECT:
**POINTE GRAND
PETERSON at
COLORADO
SPRINGS**

PETERSON ROAD
COLORADO SPRINGS, COLORADO

KSH# 257003 HP# 26xxxx

SHEET TITLE:
**36 UNIT
BUILDING - PLAN
AND
ELEVATIONS**

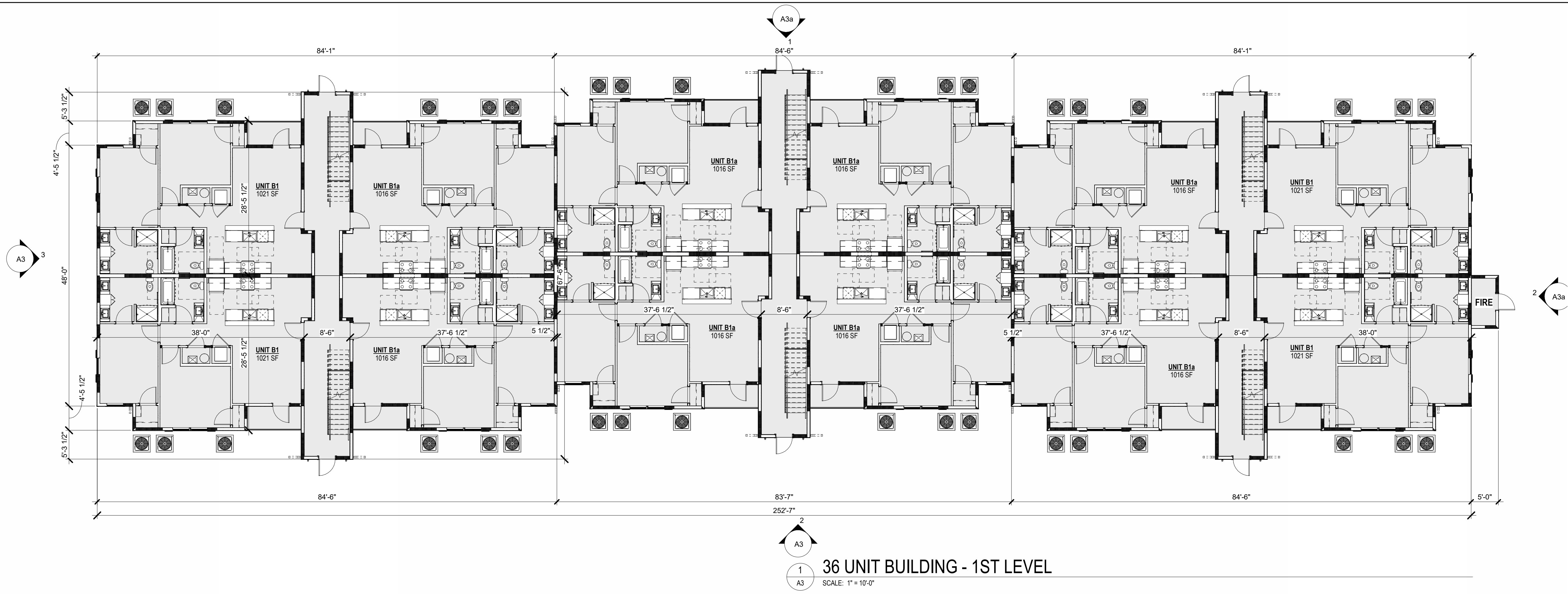
ARCHITECT SEAL:

DRAWING DATE: 03/17/26

SITE SUBMITTAL SET

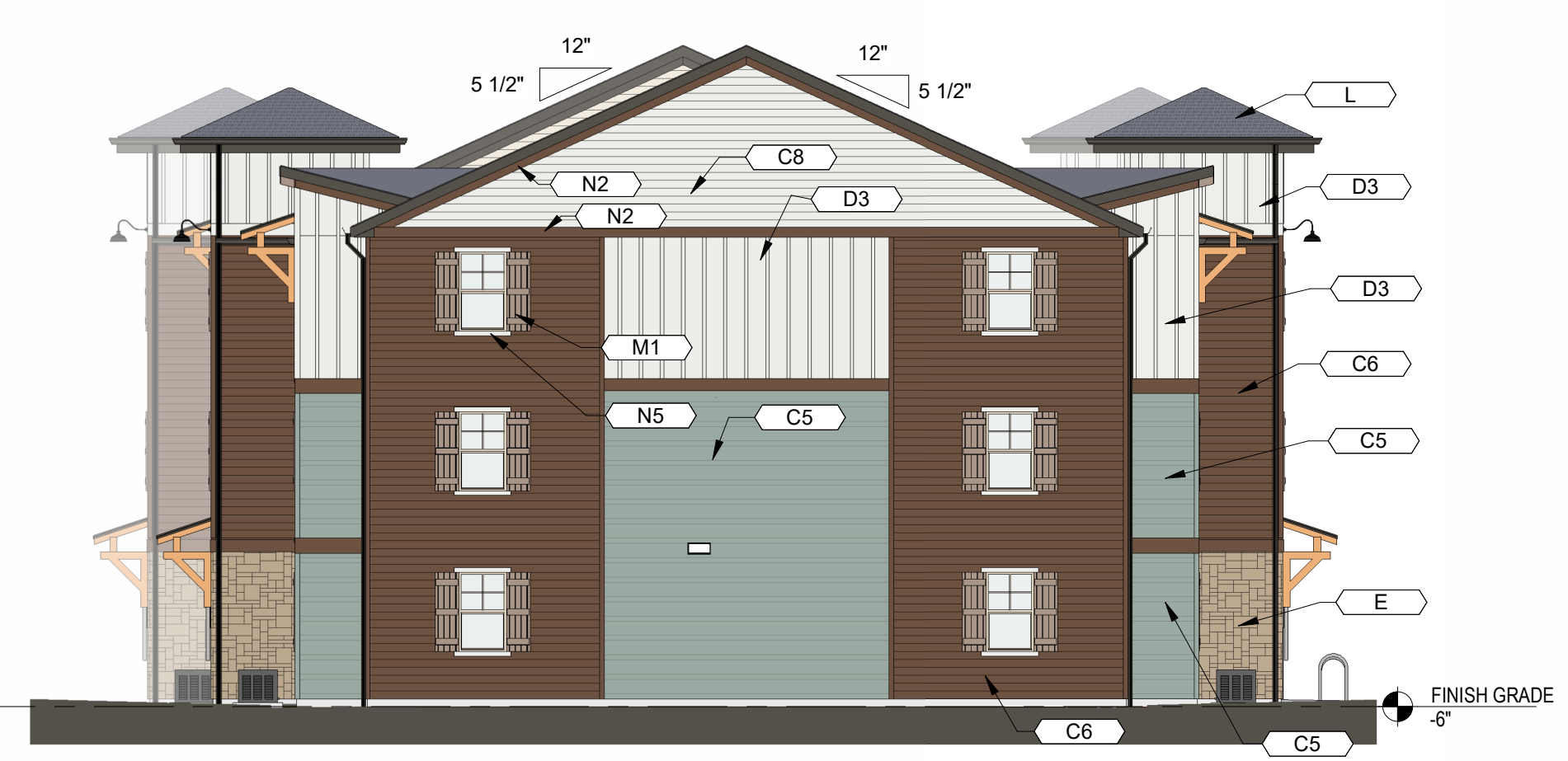
REVISIONS		
No.	Issue	Date

SHEET: **A3**



KEYNOTES	
TAG	KEYNOTE TEXT
C5	FIBER CEMENT SIDING, 4"X10" LAP ALTERNATING, PAINTED (SW 6213 HALCYON GREEN)
C6	FIBER CEMENT SIDING, 6" LAP, PAINTED (SW 2807 MEDIUM BROWN)
C8	FIBER CEMENT SIDING, 6" LAP, PAINTED (SW 7006 EXTRA WHITE)
D3	FIBER CEMENT BOARD AND BATTEN SIDING, PAINTED (SW 7006 EXTRA WHITE)
E	ADHERED STONE VENEER, SPLIT FACED TRAVERTINE, (PATTERN AND COLOR TO BE SELECTED BY OWNER)
F	SYNTHETIC WOOD 8" LAP SIDING, COLOR OAK (TO BE SELECTED BY OWNER)
H	METAL GUARDRAIL, COLOR: (TO MATCH SW 7048 DARK BRONZE)
K	5" VERTICAL LINEAR DECORATIVE COLUMN SCONCE, (2) AT EACH ENTRY COLUMNS (SEE MATERIAL BOARD)

KEYNOTES	
TAG	KEYNOTE TEXT
L	ASPHALT DIMENSIONAL HIGH PROFILE ROOFING SHINGLES, COLOR: CHARCOAL (TO BE SELECTED BY OWNER)
L1	STANDING SEAM METAL ROOF, COLOR: BRONZE (TO BE SELECTED BY OWNER)
M1	DECORATIVE BOARD AND BATTEN SHUTTERS, COLOR: WOOD LOOK (TO BE SELECTED BY OWNER)
N2	FIBER CEMENT TRIM/FASCIA PAINTED (SW 2807 MEDIUM BROWN)
N5	FIBER CEMENT TRIM/FASCIA PAINTED (SW 7006 EXTRA WHITE)
P4	AC CONDENSER UNIT, TO BE SCREENED BY PLANTING





Office:
 8830 Macon Highway
 Building 300
 Athens, GA 30606

DEVELOPER:
HILLPOINTE

Corporate Office:
 101 South New York Avenue, Unit 211
 Winter Park, FL 32789
 PH: (407) 752-9004

Operations Office:
 8830 Macon Highway
 Building 300
 Athens, GA 30606
 PH: (407) 752-9004

Information: www.hillpointe.com

24- HOUR CONTACT:
 Marcus Wiedower
 P: (706) 254-3251
 Email: mwiedower@hillpointe.com

PROJECT:
**POINTE GRAND
 PETERSON at
 COLORADO
 SPRINGS**

PETERSON ROAD
 COLORADO SPRINGS, COLORADO

KSH# 257003 HP# 26xxxxx

SHEET TITLE:
**36 UNIT
 BUILDING -
 ELEVATIONS**

ARCHITECT SEAL:

DRAWING DATE: 03/17/26

SITE SUBMITTAL SET

REVISIONS		
No.	Issue	Date

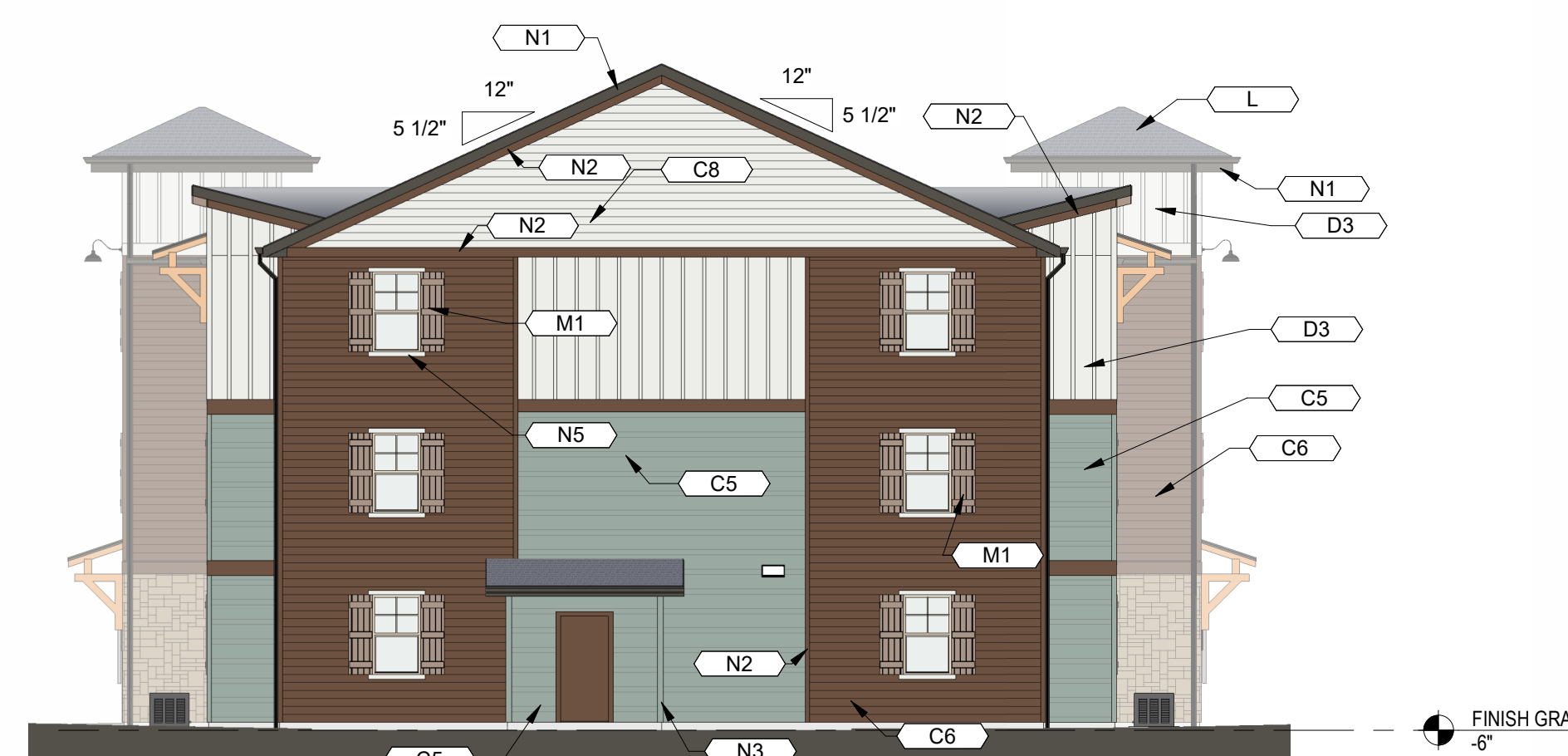
SHEET: **A3a**



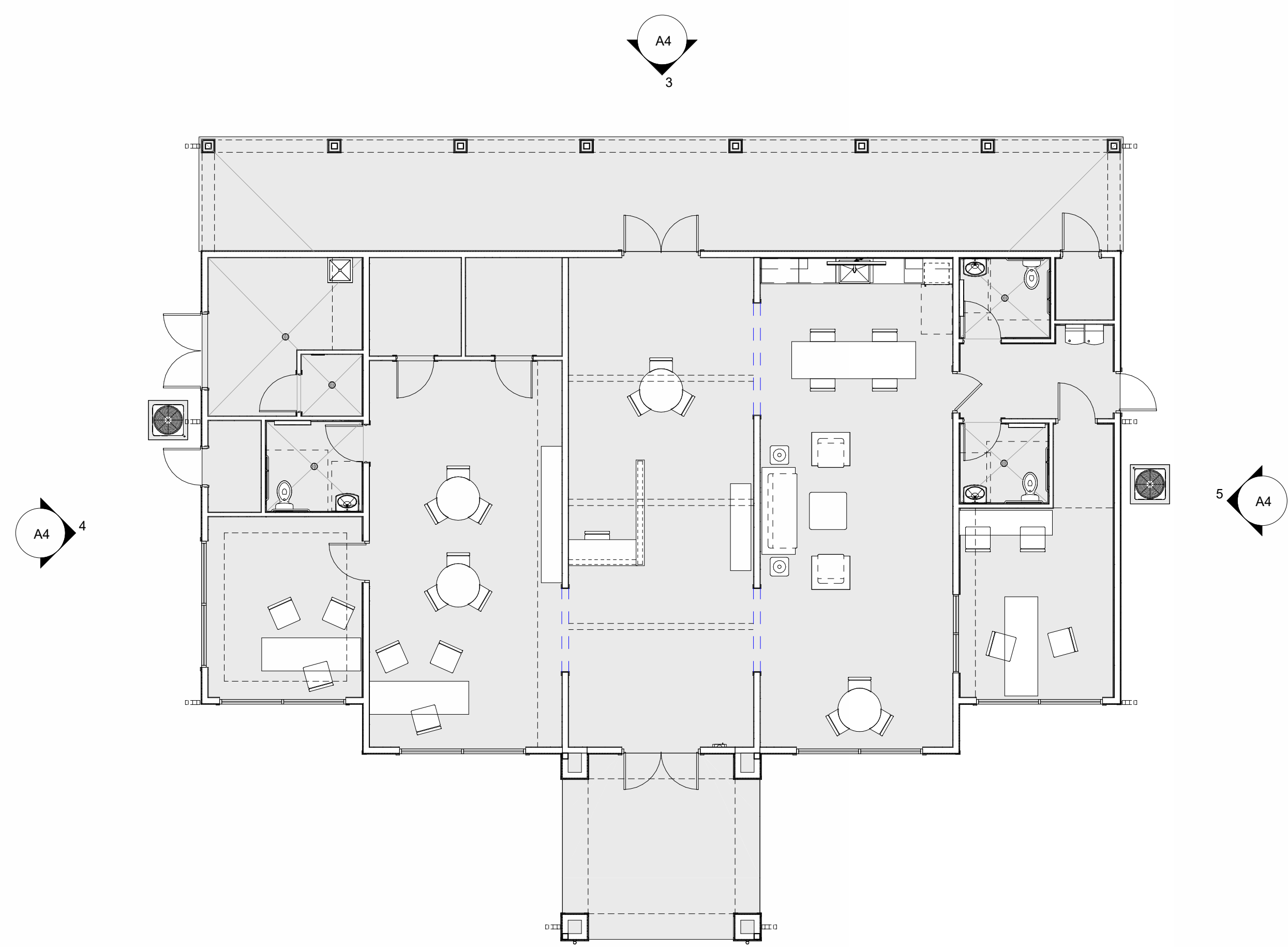
1 36 UNIT BUILDING - REAR ELEVATION
 SCALE: 1" = 10'-0"

KEYNOTES	
TAG	KEYNOTE TEXT
C5	FIBER CEMENT SIDING, 4"X10" LAP ALTERNATING, PAINTED (SW 6213 HALCYON GREEN)
C6	FIBER CEMENT SIDING, 6" LAP, PAINTED (SW 2807 MEDIUM BROWN)
C8	FIBER CEMENT SIDING, 6" LAP, PAINTED (SW 7006 EXTRA WHITE)
D3	FIBER CEMENT BOARD AND BATTEN SIDING, PAINTED (SW 7006 EXTRA WHITE)
E	ADHERED STONE VENEER, SPLIT FACED TRAVERTINE, (PATTERN AND COLOR TO BE SELECTED BY OWNER)
F	SYNTHETIC WOOD 8" LAP SIDING, COLOR OAK (TO BE SELECTED BY OWNER)
G	VINYL WINDOW (4 OVER 1 MUNTIN PATTERN)
H	METAL GUARDRAIL, COLOR: (TO MATCH SW 7048 DARK BRONZE)
K	5' VERTICAL LINEAR DECORATIVE COLUMN SCONCE, (2) AT EACH ENTRY COLUMNS (SEE MATERIAL BOARD)

KEYNOTES	
TAG	KEYNOTE TEXT
K2	BALCONY LIGHTING (SEE MATERIAL BOARD)
L	ASPHALT DIMENSIONAL HIGH PROFILE ROOFING SHINGLES, COLOR: CHARCOAL (TO BE SELECTED BY OWNER)
L1	STANDING SEAM METAL ROOF, COLOR: BRONZE (TO BE SELECTED BY OWNER)
M1	DECORATIVE BOARD AND BATTEN SHUTTERS, COLOR: WOOD LOOK (TO BE SELECTED BY OWNER)
N1	FIBER CEMENT TRIM/FASCIA PAINTED (SW 7048 URBANE BRONZE)
N2	FIBER CEMENT TRIM/FASCIA PAINTED (SW 2807 MEDIUM BROWN)
N3	FIBER CEMENT TRIM/FASCIA PAINTED (SW 6213 HALCYON GREEN)
N5	FIBER CEMENT TRIM/FASCIA PAINTED (SW 7006 EXTRA WHITE)
P4	AC CONDENSER UNIT, TO BE SCREENED BY PLANTING



2 36 UNIT BUILDING - RIGHT ELEVATION
 SCALE: 1" = 10'-0"



1 CLUBHOUSE - FLOOR PLAN
SCALE: 1/8" = 1'-0"

KEYNOTES	
TAG	KEYNOTE TEXT
01-007	BUILDING SIGNAGE PER OWNER
C5	FIBER CEMENT SIDING, 4"/10" LAP ALTERNATING, PAINTED (SW 6213 HALCYON GREEN)
C6	FIBER CEMENT SIDING, 6" LAP, PAINTED (SW 2807 MEDIUM BROWN)
D3	FIBER CEMENT BOARD AND BATTEN SIDING, PAINTED (SW 7006 EXTRA WHITE)
G2	STOREFRONT
K	5' VERTICAL LINEAR DECORATIVE COLUMN SCIENCE, (2) AT EACH ENTRY COLUMNS (SEE MATERIAL BOARD)
L	ASPHALT DIMENSIONAL HIGH PROFILE ROOFING SHINGLES, COLOR: CHARCOAL (TO BE SELECTED BY OWNER)
N1	FIBER CEMENT TRIM/FASCIA PAINTED (SW 7048 URBANE BRONZE)
N2	FIBER CEMENT TRIM/FASCIA PAINTED (SW 2807 MEDIUM BROWN)
P4	AC CONDENSER UNIT, TO BE SCREENED BY PLANTING



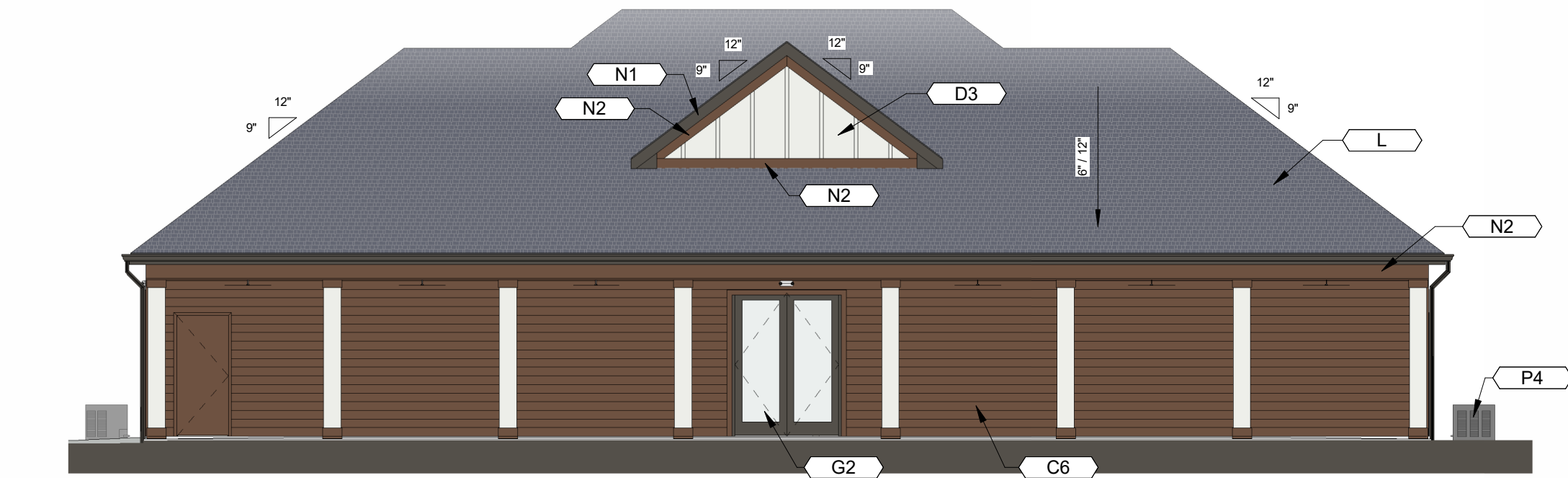
4 CLUBHOUSE - LEFT ELEVATION
SCALE: 1/8" = 1'-0"



2 CLUBHOUSE - FRONT ELEVATION
SCALE: 1/8" = 1'-0"



5 CLUBHOUSE - RIGHT ELEVATION
SCALE: 1/8" = 1'-0"



3 CLUBHOUSE - REAR ELEVATION
SCALE: 1/8" = 1'-0"



ARCHITECT:
Office:
8830 Macon Highway
Building 300
Athens, GA 30606

DEVELOPER:
HILLPOINTE

Corporate Office:
101 South New York Avenue, Unit 211
Winter Park, FL 32789
PH: (407) 752-9004

Operations Office:
8830 Macon Highway
Building 300
Athens, GA 30606
PH: (407) 752-9004

Information: www.hillpointe.com

24- HOUR CONTACT:
Marcus Wiedower
P: (706) 254-3251
Email: mwiedower@hillpointe.com

PROJECT:
**POINTE GRAND
PETERSON at
COLORADO
SPRINGS**

PETERSON ROAD
COLORADO SPRINGS, COLORADO

KSH# 257003 HP# 26xxxxx

SHEET TITLE:
**CLUBHOUSE -
PLAN AND
ELEVATIONS**

ARCHITECT SEAL:

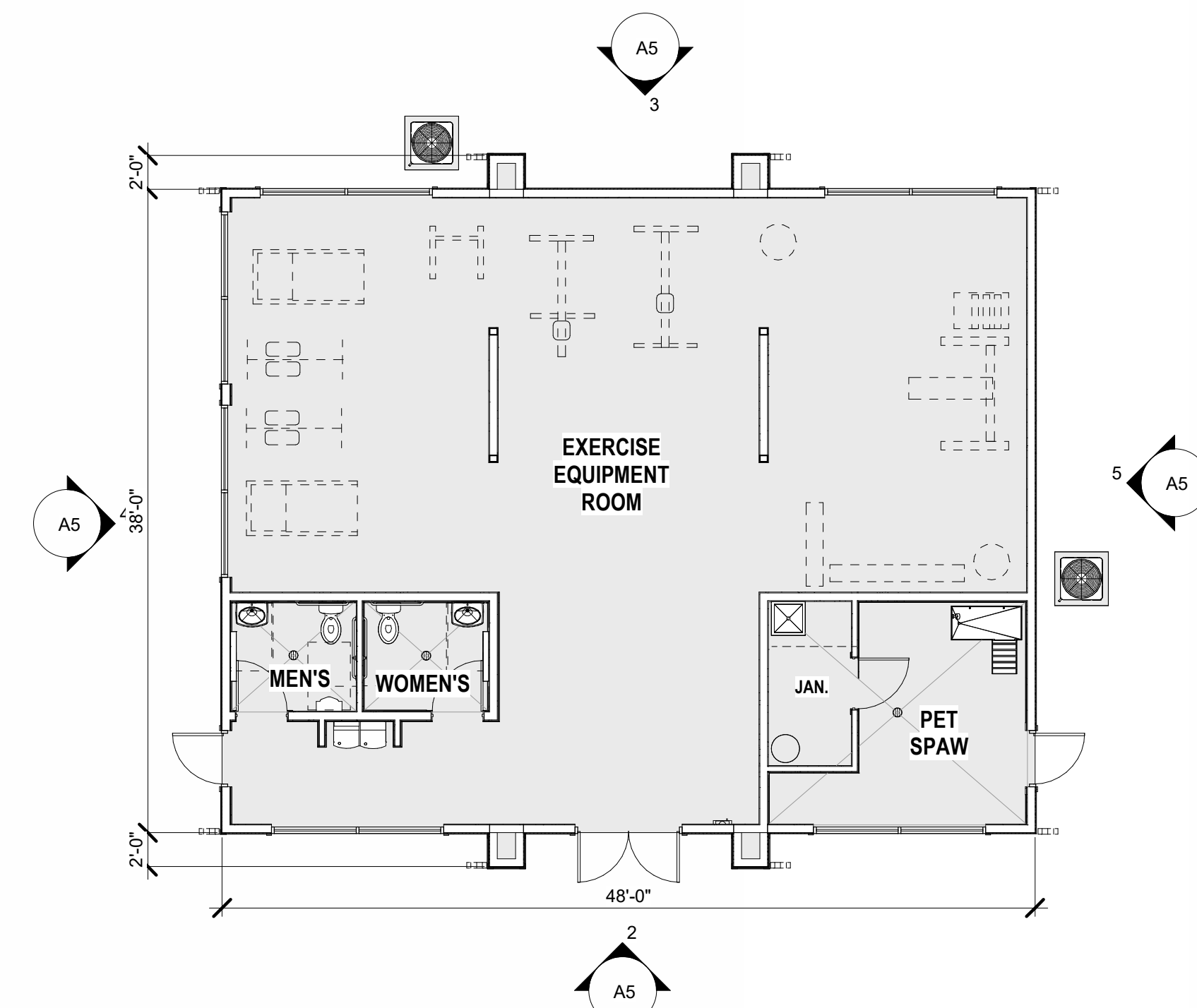
DRAWING DATE: 03/17/26

SITE SUBMITTAL SET

REVISIONS

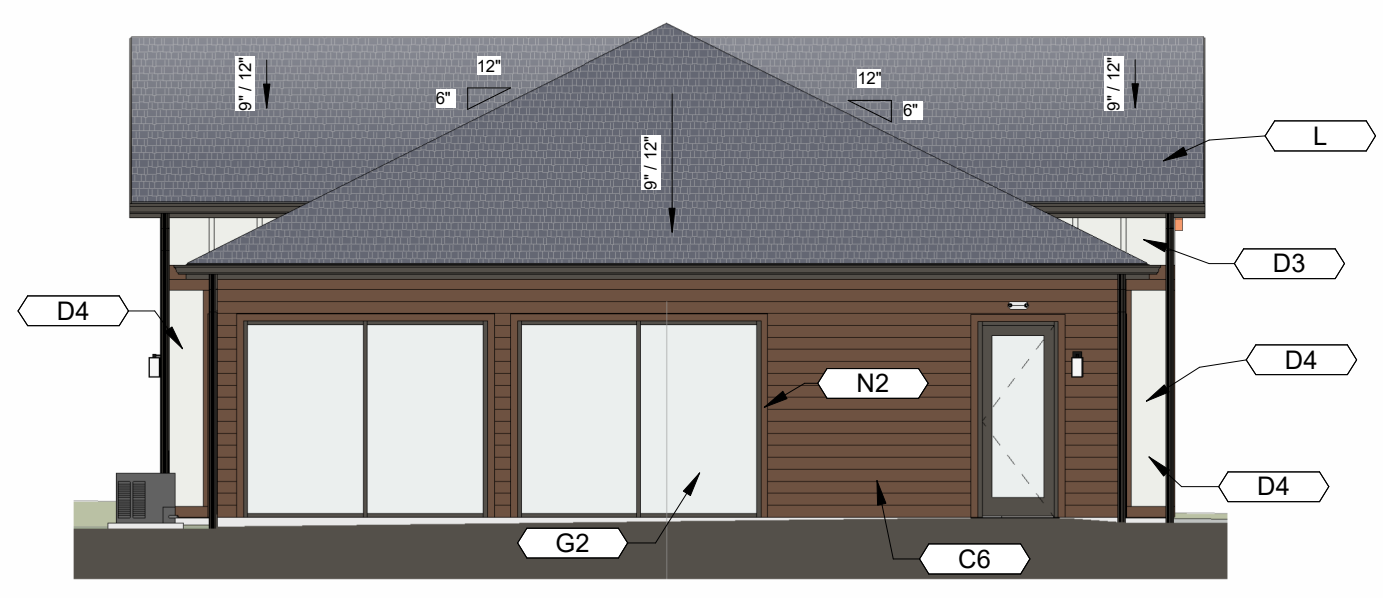
No.	Issue	Date

SHEET: **A4**

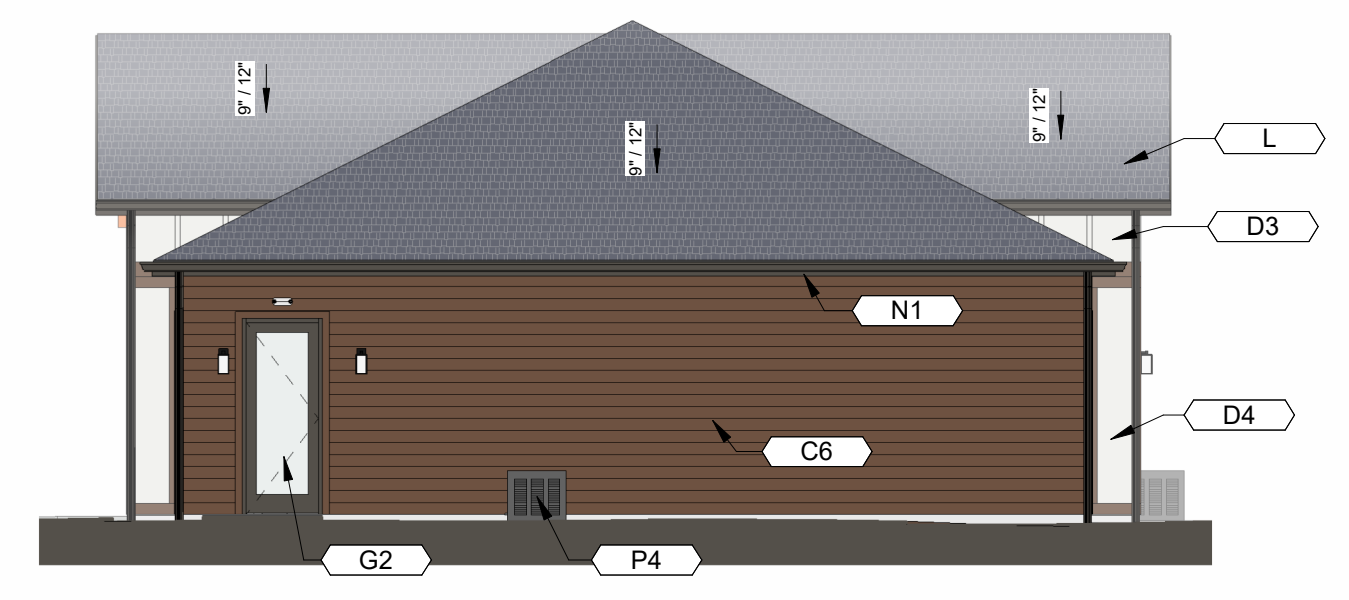


1 FITNESS CENTER - FLOOR PLAN
SCALE: 1/8" = 1'-0"

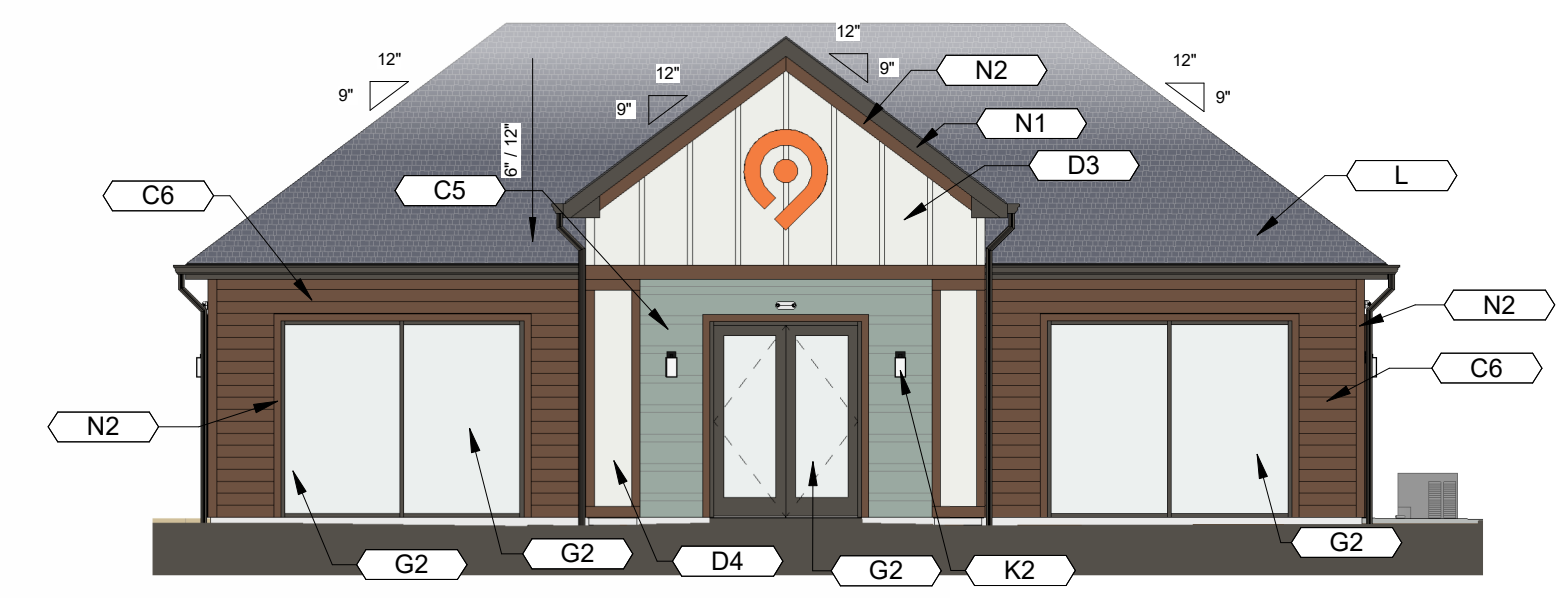
KEYNOTES	
TAG	KEYNOTE TEXT
C5	FIBER CEMENT SIDING, 4"X10" LAP ALTERNATING, PAINTED (SW 6213 HALCYON GREEN)
C6	FIBER CEMENT SIDING, 6" LAP, PAINTED (SW 2807 MEDIUM BROWN)
D3	FIBER CEMENT BOARD AND BATTEN SIDING, PAINTED (SW 7006 EXTRA WHITE)
D4	FIBER CEMENT PANEL PAINTED (SW 7006 EXTRA WHITE)
G2	STOREFRONT
K2	BALCONY LIGHTING (SEE MATERIAL BOARD)
L	ASPHALT DIMENSIONAL HIGH PROFILE ROOFING SHINGLES, COLOR: CHARCOAL (TO BE SELECTED BY OWNER)
N1	FIBER CEMENT TRIM/FASCIA PAINTED (SW 7048 URBANE BRONZE)
N2	FIBER CEMENT TRIM/FASCIA PAINTED (SW 2807 MEDIUM BROWN)
P4	AC CONDENSER UNIT, TO BE SCREENED BY PLANTING



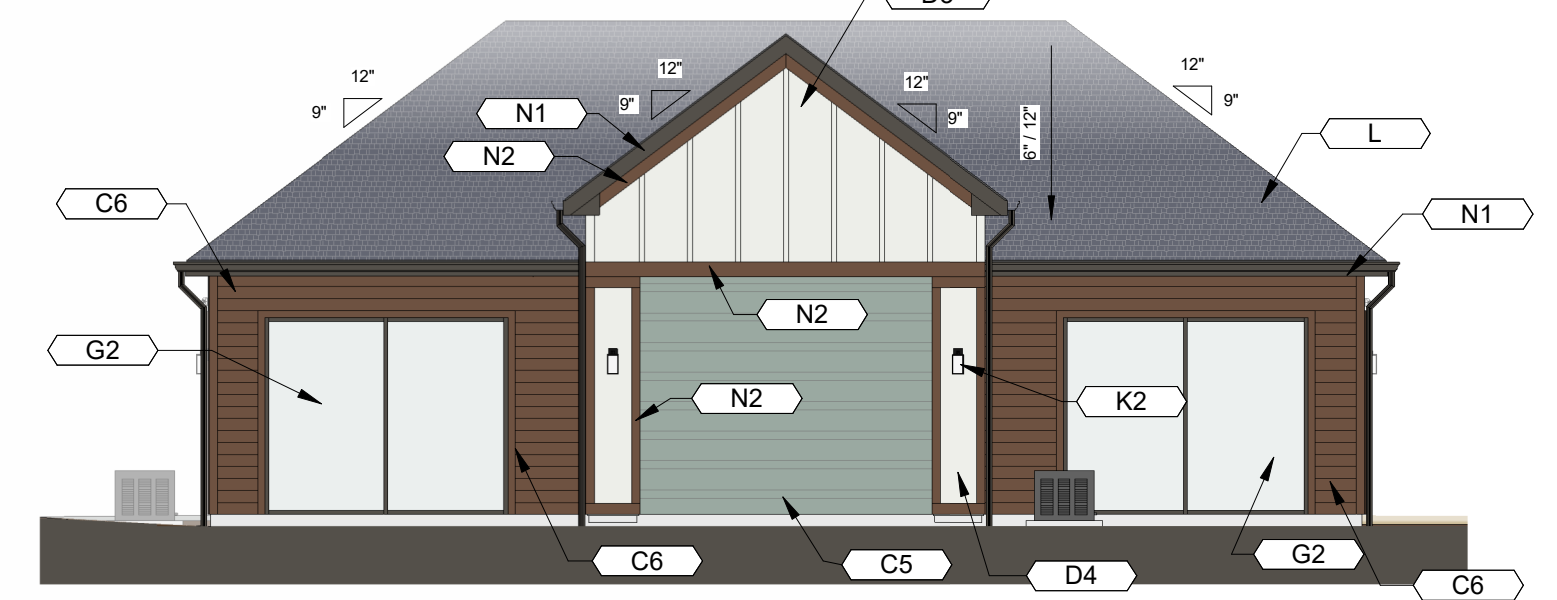
4 FITNESS CENTER - LEFT ELEVATION
SCALE: 1/8" = 1'-0"



5 FITNESS CENTER - RIGHT ELEVATION
SCALE: 1/8" = 1'-0"



2 FITNESS CENTER - FRONT ELEVATION
SCALE: 1/8" = 1'-0"



3 FITNESS CENTER - REAR ELEVATION
SCALE: 1/8" = 1'-0"



Office:
8830 Macon Highway
Building 300
Athens, GA 30606

DEVELOPER:
HILLPOINTE

Corporate Office:
101 South New York Avenue, Unit 211
Winter Park, FL 32789
PH: (407) 752-9004

Operations Office:
8830 Macon Highway
Building 300
Athens, GA 30606
PH: (407) 752-9004

Information: www.hillpointe.com

24- HOUR CONTACT:
Marcus Wiedower
P: (706) 254-3251
Email: mwiedower@hillpointe.com

PROJECT:
POINTE GRAND PETERSON at COLORADO SPRINGS
PETERSON ROAD
COLORADO SPRINGS, COLORADO

KSH# 257003 HP# 26xxxxx

SHEET TITLE:
FITNESS CENTER - PLAN AND ELEVATIONS

ARCHITECT SEAL:

DRAWING DATE: 03/17/26

SITE SUBMITTAL SET

REVISIONS		
No.	Issue	Date

SHEET: **A5**



Office:
8830 Macon Highway
Building 300
Athens, GA 30606

DEVELOPER:
HILLPOINTE

Corporate Office:
101 South New York Avenue, Unit 211
Winter Park, FL 32789
PH: (407) 752-9004

Operations Office:
8830 Macon Highway
Building 300
Athens, GA 30606
PH: (407) 752-9004

Information: www.hillpointe.com

24- HOUR CONTACT:
Marcus Wiedower
P: (706) 254-3251
Email: mwiedower@hillpointe.com

PROJECT:
**POINTE GRAND
PETERSON at
COLORADO
SPRINGS**

PETERSON ROAD
COLORADO SPRINGS, COLORADO

KSH# 257003 HP# 26xxxxx

SHEET TITLE:
**MAIL BUILDING &
TRASH
ENCLOSURE -
PLAN &
ELEVATIONS**

ARCHITECT SEAL:

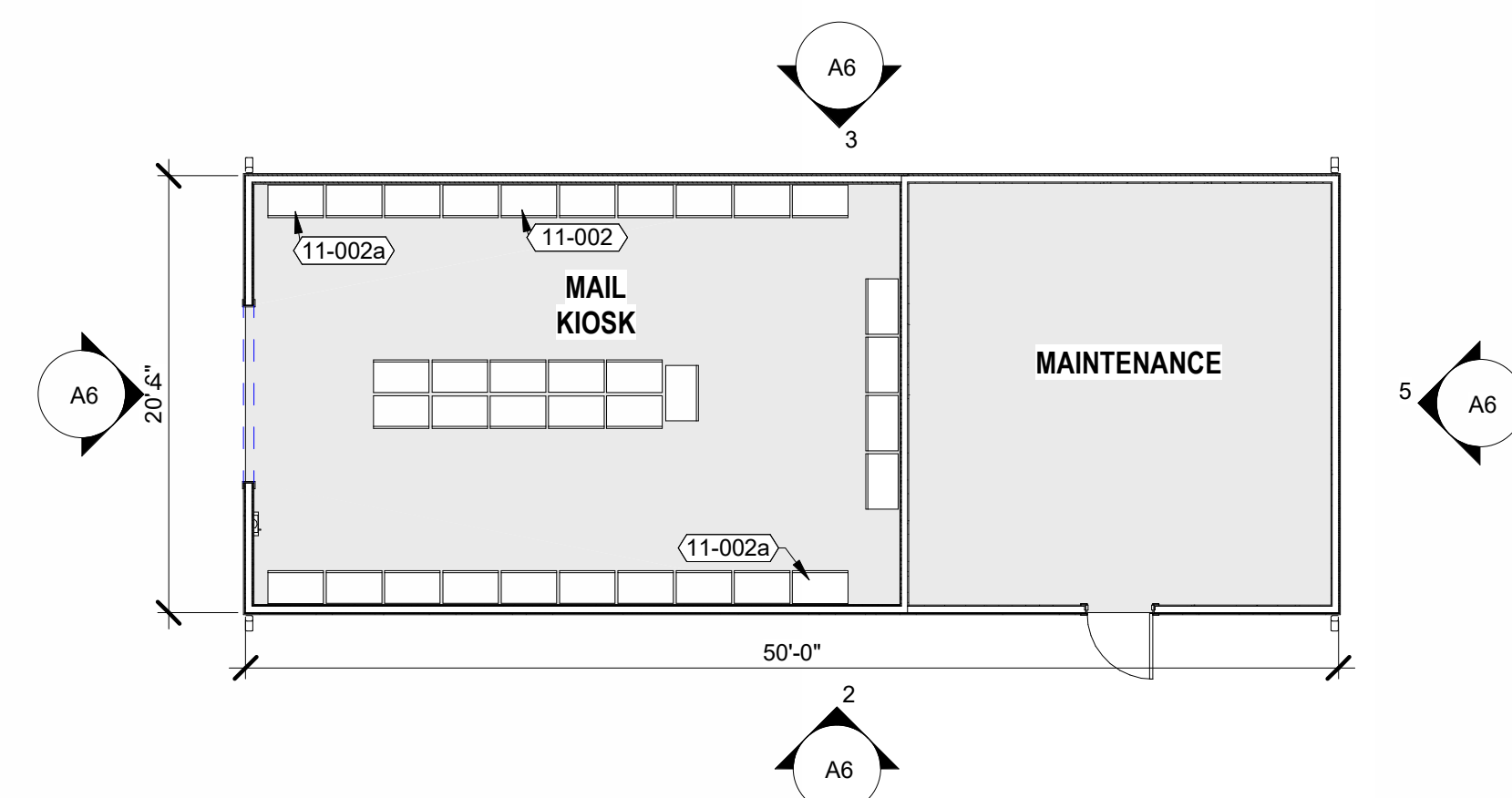
DRAWING DATE: 03/17/26

SITE SUBMITTAL SET

REVISIONS

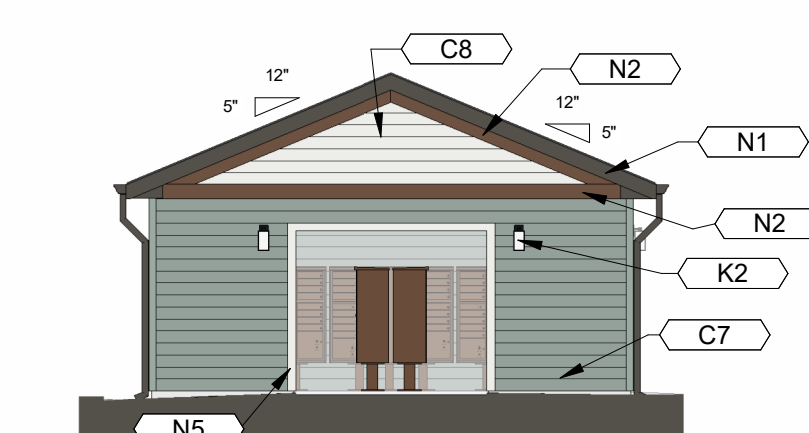
No.	Issue	Date

SHEET: **A6**



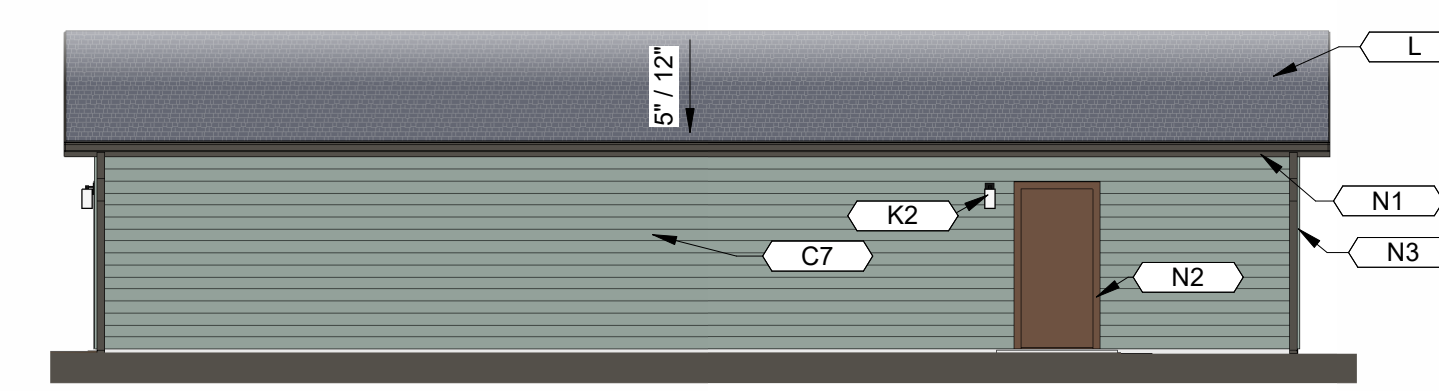
1 MAIL BUILDING - FLOOR PLAN

SCALE: 1/8" = 1'-0"



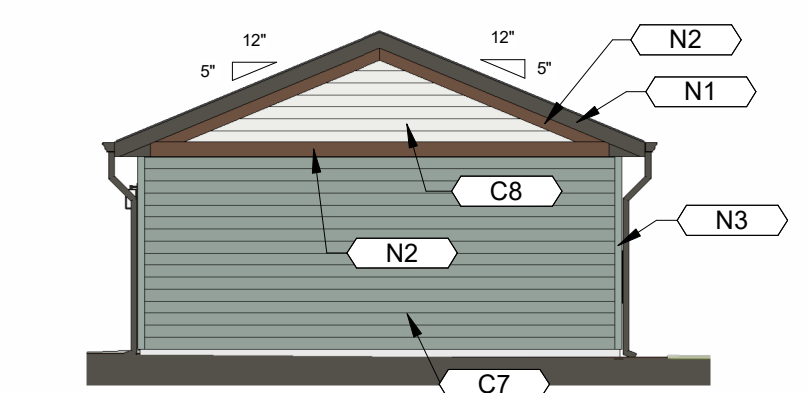
4 MAIL - LEFT SIDE ELEV.

SCALE: 1/8" = 1'-0"



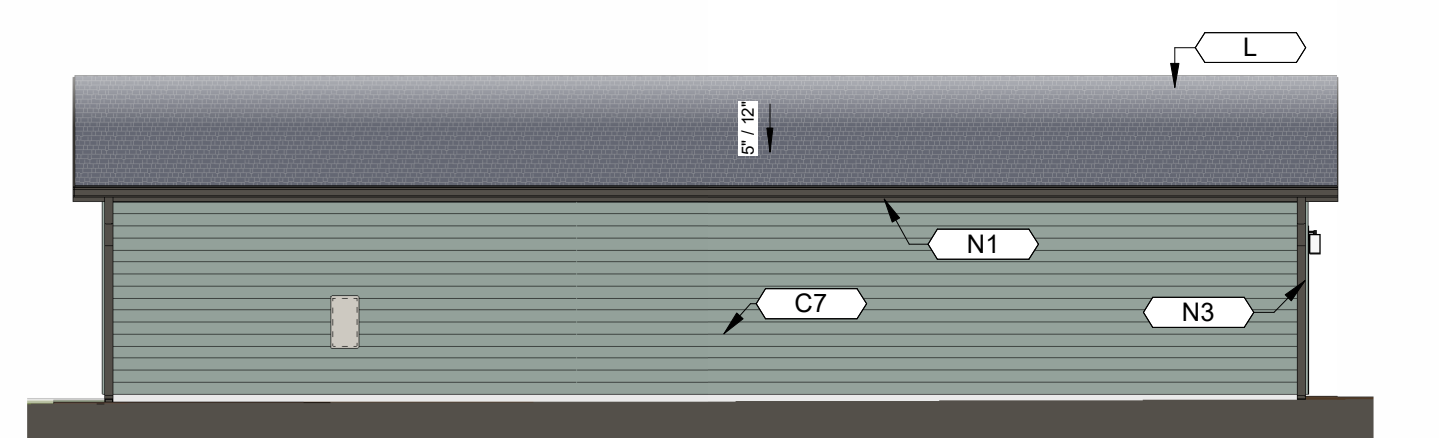
2 MAIL BUILDING - FRONT ELEVATION

SCALE: 1/8" = 1'-0"



5 MAIL - RIGHT SIDE ELEV.

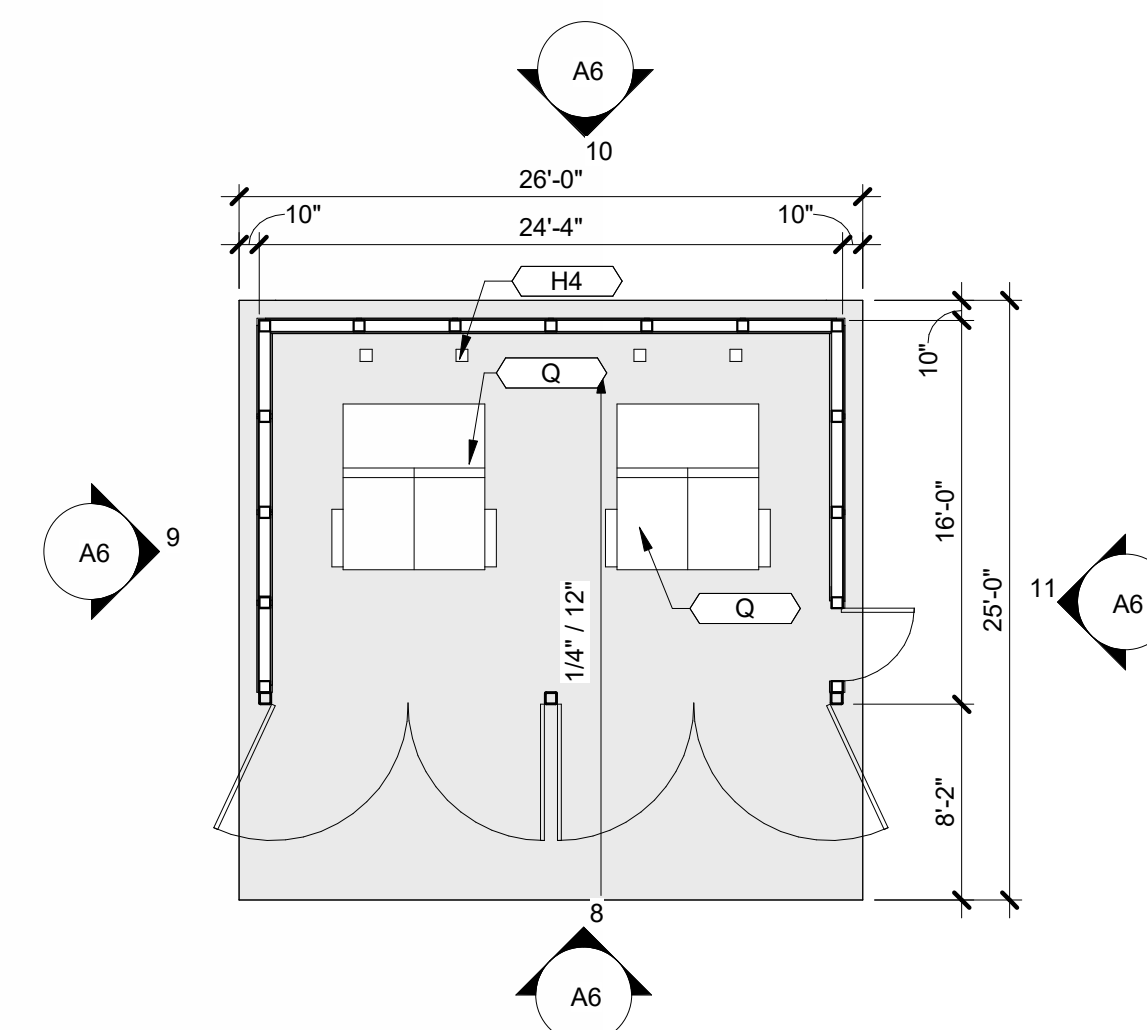
SCALE: 1/8" = 1'-0"



3 MAIL BUILDING - REAR ELEVATION

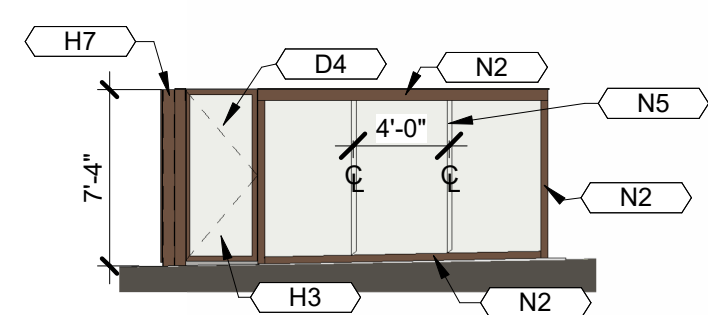
SCALE: 1/8" = 1'-0"

KEYNOTES	
TAG	KEYNOTE TEXT
11-002	M UNIT = 16 UNIT CLUSTER MAIL BOX, VITAL 1570-16 BY FLORENCE CORP. OR EQUAL, WITH (16) MAILBOXES, (1) OUTGOING MAIL & (2) PARCEL LOCKERS SEE 5/A201 FOR POSTAL STANDARDS, COLOR TO BE SELECTED BY OWNER
11-002a	P UNIT = 4 UNIT CLUSTER MAIL BOX, VITAL 1590-T2 BY FLORENCE CORP. OR EQUAL, WITH (4) PARCEL LOCKERS SEE 6/A201 FOR POSTAL STANDARDS, COLOR TO BE SELECTED BY OWNER
C7	FIBER CEMENT SIDING, 6" LAP, PAINTED (SW 6213 HALCYON GREEN)
C8	FIBER CEMENT SIDING, 6" LAP, PAINTED (SW 7006 EXTRA WHITE)
D4	FIBER CEMENT PANEL PAINTED (SW 7006 EXTRA WHITE)
H3	CUSTOM MADE STEEL FRAMED GATES W/ FIBER CEMENT SIDING APPLIED
H4	STEEL PIPE BOLLARD, PAINTED YELLOW
H7	STEEL POST PAINTED, (SW 2807 MEDIUM BROWN)
K2	BALCONY LIGHTING (SEE MATERIAL BOARD)
L	ASPHALT DIMENSIONAL HIGH PROFILE ROOFING SHINGLES, COLOR: CHARCOAL (TO BE SELECTED BY OWNER)
N1	FIBER CEMENT TRIM/FASCIA PAINTED (SW 7048 URBANE BRONZE)
N2	FIBER CEMENT TRIM/FASCIA PAINTED (SW 2807 MEDIUM BROWN)
N3	FIBER CEMENT TRIM/FASCIA PAINTED (SW 6213 HALCYON GREEN)
N5	FIBER CEMENT TRIM/FASCIA PAINTED (SW 7006 EXTRA WHITE)
Q	DUMPSTER, BY OTHERS



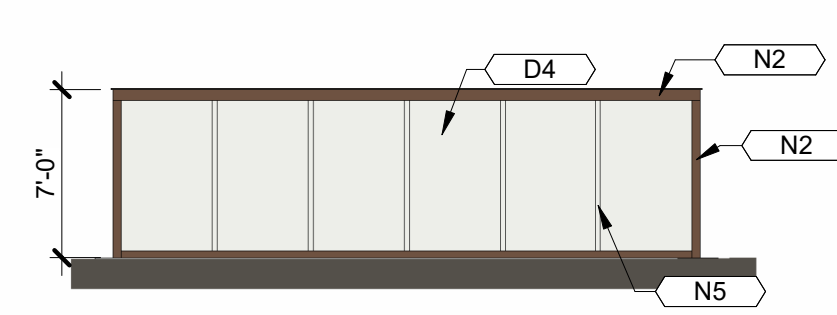
7 TRASH ENCLOSURE - PLAN

SCALE: 1/8" = 1'-0"



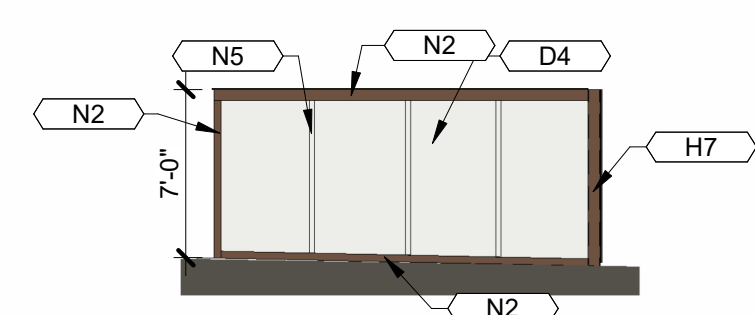
11 TRASH - RIGHT SIDE ELEV.

SCALE: 1/8" = 1'-0"



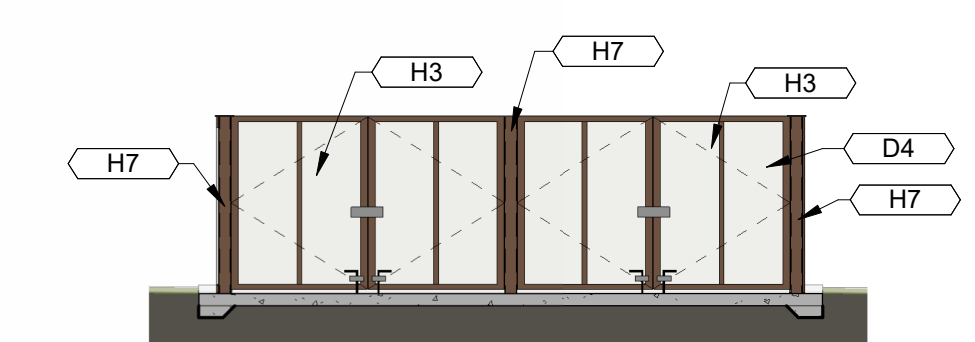
10 TRASH - REAR ELEVATION

SCALE: 1/8" = 1'-0"



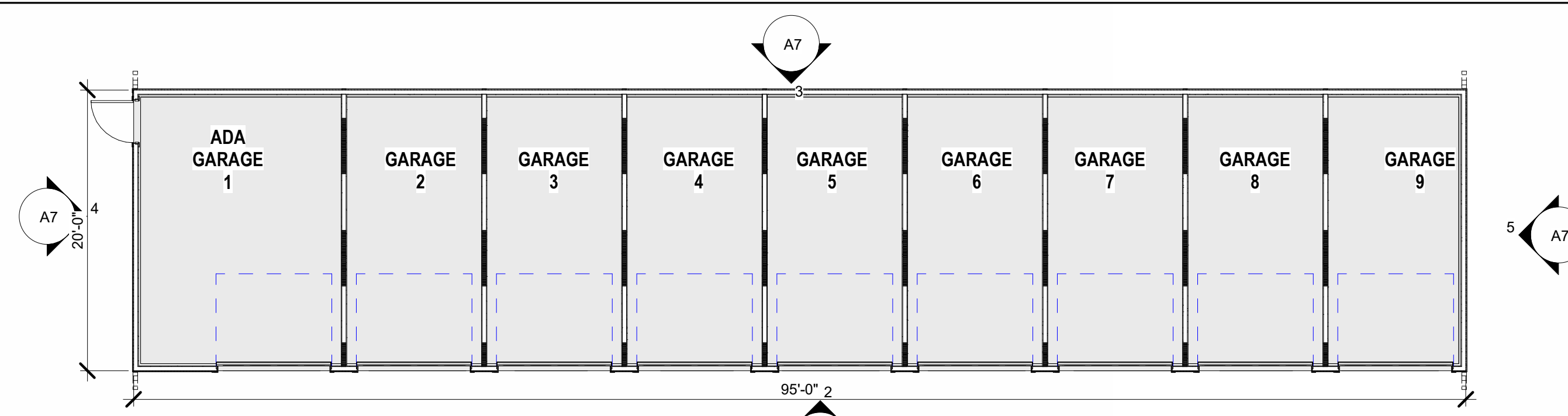
9 TRASH - LEFT SIDE ELEV.

SCALE: 1/8" = 1'-0"



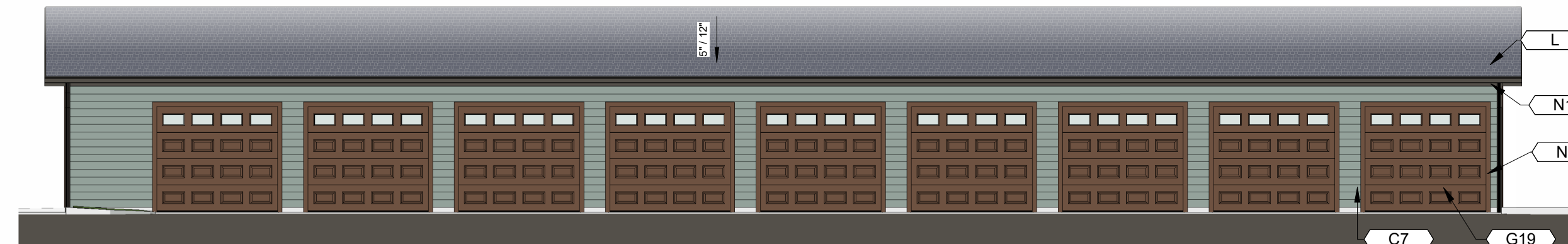
8 TRASH - FRONT ELEVATION

SCALE: 1/8" = 1'-0"



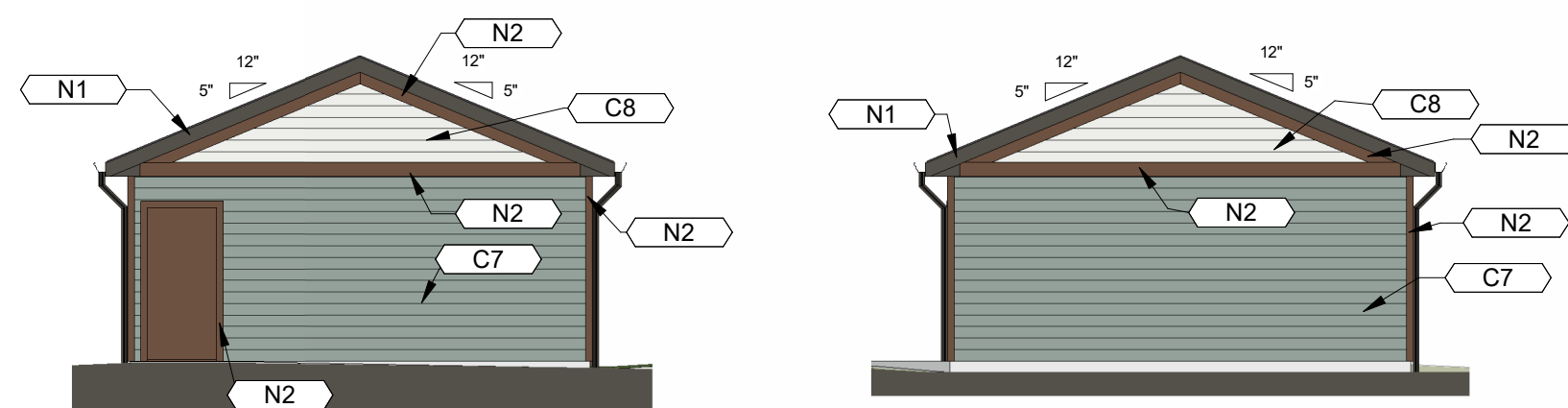
1 GARAGE G9HC - FLOOR PLAN

SCALE: 1/8" = 1'-0"



2 GARAGE G9HC - FRONT ELEVATION

SCALE: 1/8" = 1'-0"

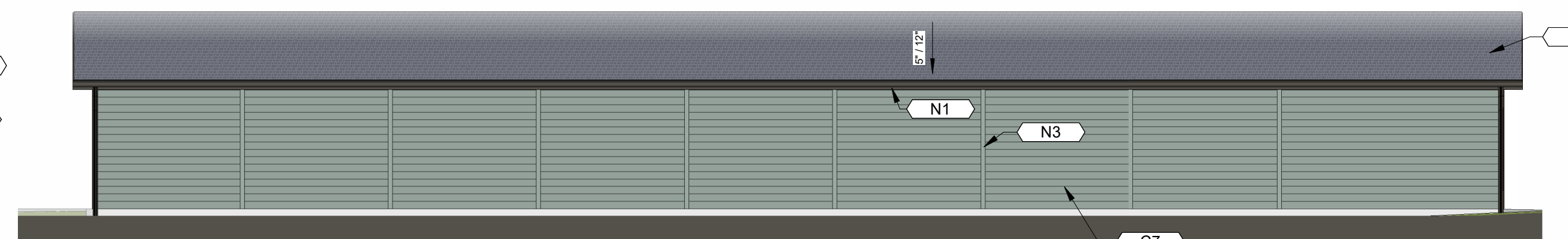


4 GARAGE G9HC - LEFT

SCALE: 1/8" = 1'-0"

5 GARAGE G9HC - RIGHT

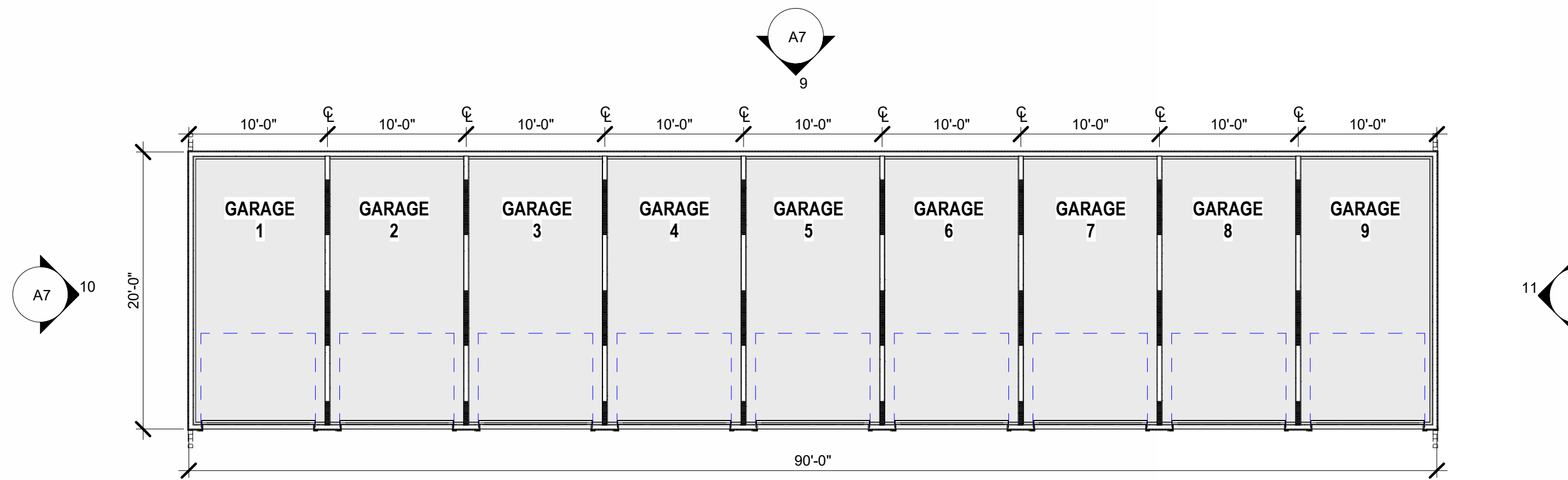
SCALE: 1/8" = 1'-0"



3 GARAGE G9HC - REAR ELEVATION

SCALE: 1/8" = 1'-0"

KEYNOTES	
TAG	KEYNOTE TEXT
C7	FIBER CEMENT SIDING, 6" LAP, PAINTED (SW 6213 HALCYON GREEN)
C8	FIBER CEMENT SIDING, 6" LAP, PAINTED (SW 7006 EXTRA WHITE)
G19	GARAGE DOOR, PAINTED: (SW 2807 MEDIUM BROWN)
L	ASPHALT DIMENSIONAL HIGH PROFILE ROOFING SHINGLES, COLOR: CHARCOAL (TO BE SELECTED BY OWNER)
N1	FIBER CEMENT TRIM/FASCIA PAINTED (SW 7048 URBANE BRONZE)
N2	FIBER CEMENT TRIM/FASCIA PAINTED (SW 2807 MEDIUM BROWN)
N3	FIBER CEMENT TRIM/FASCIA PAINTED (SW 6213 HALCYON GREEN)



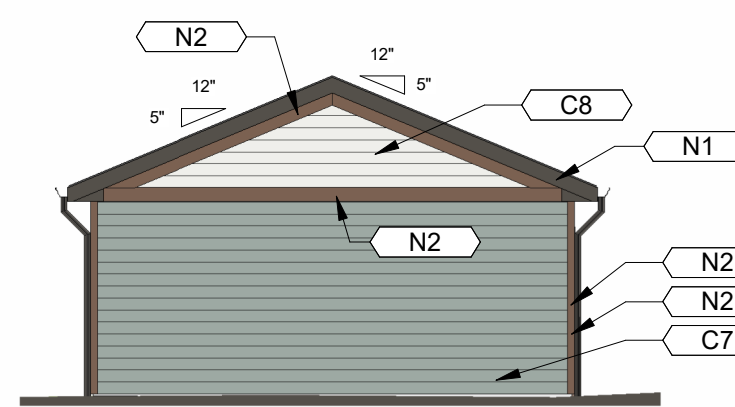
7 GARAGE G9 - FLOOR PLAN (DS)

SCALE: 1/8" = 1'-0"



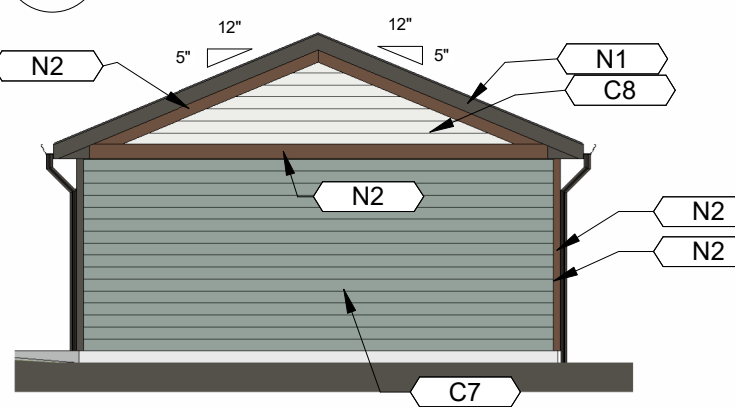
8 GARAGE G9 - FRONT ELEVATION

SCALE: 1/8" = 1'-0"



10 GARAGE G9 - LEFT

SCALE: 1/8" = 1'-0"



11 GARAGE G9 - RIGHT

SCALE: 1/8" = 1'-0"



9 GARAGE G9 - REAR ELEVATION

SCALE: 1/8" = 1'-0"



Office:

8830 Macon Highway
Building 300
Athens, GA 30606

DEVELOPER:



Corporate Office:

101 South New York Avenue, Unit 211
Winter Park, FL 32789
PH: (407) 752-9004

Operations Office:

8830 Macon Highway
Building 300
Athens, GA 30606
PH: (407) 752-9004

Information: www.hillpointe.com

24- HOUR CONTACT:

Marcus Wiedower
P: (706) 254-3251
Email: mwiedower@hillpointe.com

PROJECT:

POINTE GRAND PETERSON at COLORADO SPRINGS

PETERSON ROAD
COLORADO SPRINGS, COLORADO

KSH# 257003

HP# 26xxxxx

SHEET TITLE:

GARAGE - PLANS & ELEVATIONS

ARCHITECT SEAL:

DRAWING DATE: 03/17/26

SITE SUBMITTAL SET

REVISIONS		
No.	Issue	Date

SHEET: **A7**