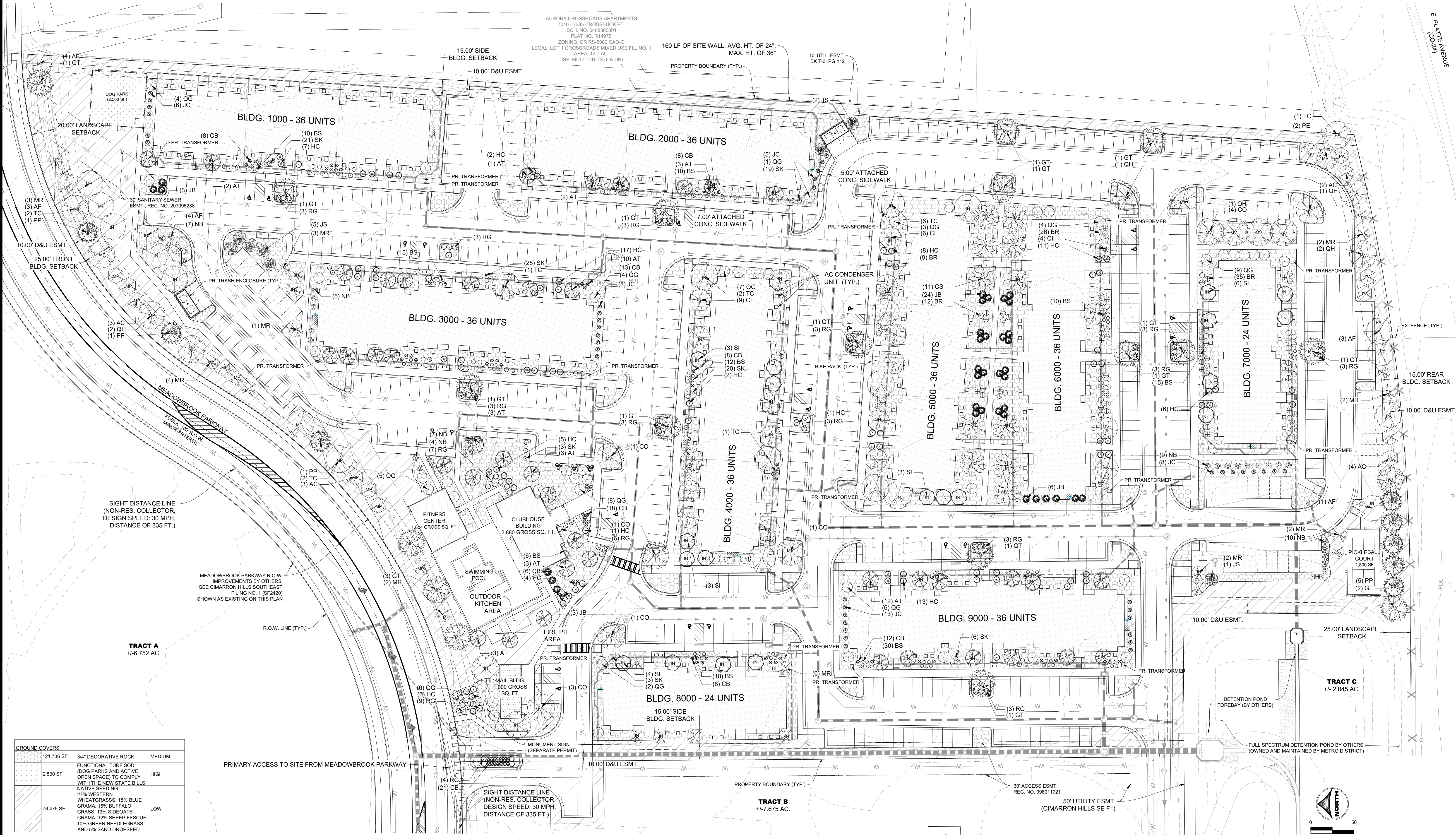


HILLPOINTE APARTMENTS AT PETERSON SITE DEVELOPMENT PLAN

PROPERTIES THAT LIE WITHIN THE NORTHWEST QUARTER AND THE SOUTHWEST QUARTER OF THE SOUTHWEST QUARTER OF SECTION 8,
TOWNSHIP 14 SOUTH, RANGE 65 WEST OF THE SIXTH PRINCIPAL MERIDIAN, COUNTY OF EL PASO, STATE OF COLORADO

LYON, RICHELIE, 6/18/2026 9:49 AM



GROUND COVERS		
121,736 SF	3/4" DECORATIVE ROCK	MEDIUM
2,500 SF	FUNCTIONAL TURF SOD (DOG PARKS AND ACTIVE OPEN SPACE) TO COMPLY WITH THE NEW STATE BILLS NATIVE SEEDING 27% WESTERN WHEATGRASS, 18% BLUE GRAMA, 15% BUFFALO GRASS, 13% SIDINGRASS, 12% SHEEP FESCUE, 10% GREEN NEEDLEGRASS, AND 5% SAND DROPSSEED	HIGH
76,475 SF		LOW

DRAWN BY: KAL JOB DATE: 5/27/2026
 APPROVED: BKP JOB NUMBER: ---
 CAD DATE: 6/18/2026
 CAD FILE: J:\2025\2502477\CAD\DWG\IC\SDP\Landscape Plan

BAR IS ONE INCH ON OFFICIAL DRAWINGS.
 IF NOT ONE INCH, ADJUST SCALE ACCORDINGLY.

NO.	DATE	BY	REVISION DESCRIPTION

HRGreen
 HR GREEN - COLORADO SPRINGS
 1975 RESEARCH PARKWAY SUITE 160
 COLORADO SPRINGS, CO 80920
 PHONE: 719.300.4140
 FAX: 719.965.0044

HILLPOINTE APARTMENTS AT PETERSON
 HILLPOINTE, LLC.
 COLORADO SPRINGS, EL PASO COUNTY, COLORADO

SITE DEVELOPMENT PLAN
 LANDSCAPE PLAN

SHEET
 LA
 2

PCD FILE NO.: PPR-26-13

