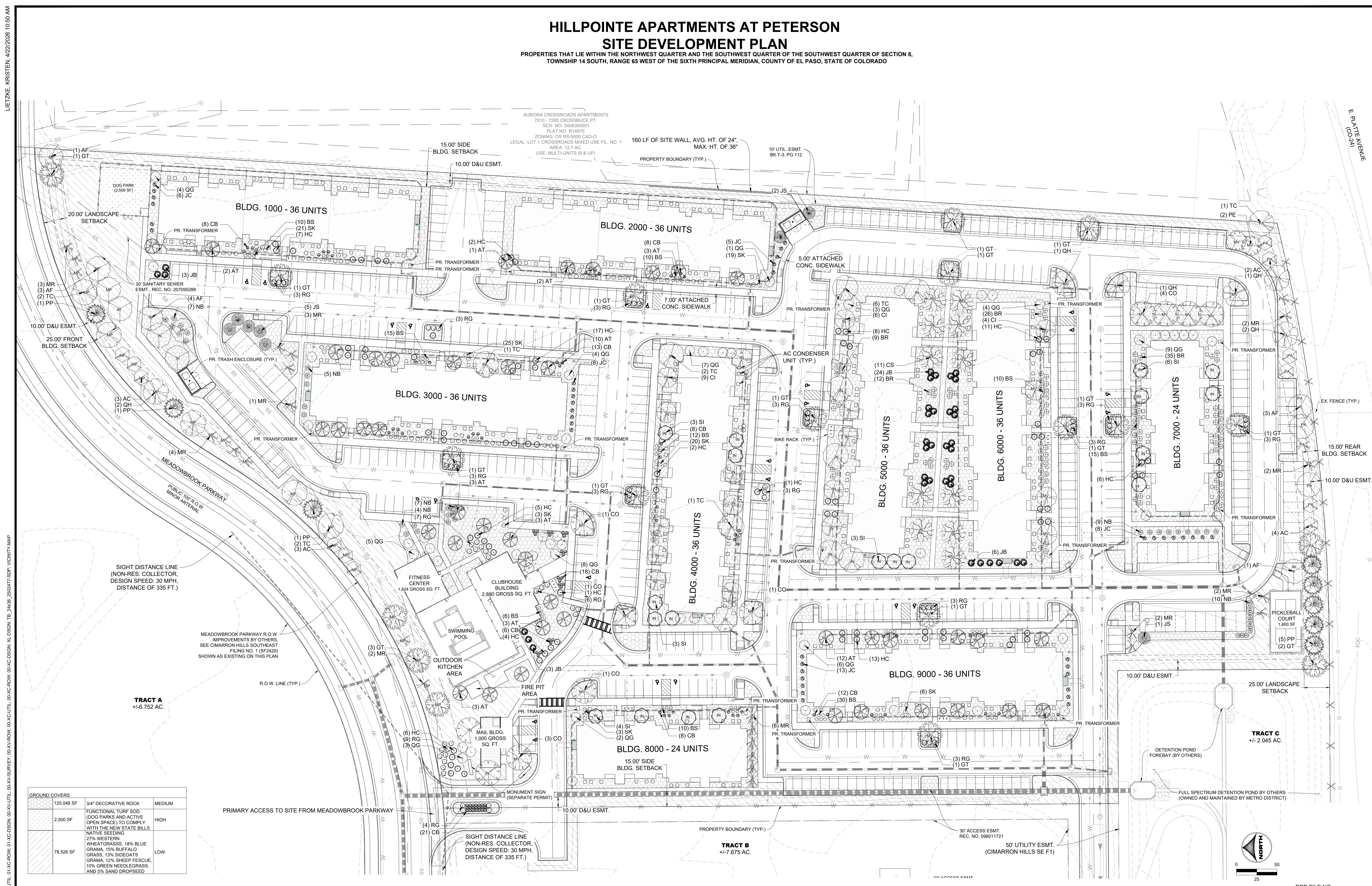


HILLPOINTE APARTMENTS AT PETERSON SITE DEVELOPMENT PLAN

PROPERTIES THAT LIE WITHIN THE NORTHWEST QUARTER AND THE SOUTHWEST QUARTER OF THE SOUTHWEST QUARTER OF SECTION 8,
TOWNSHIP 14 SOUTH, RANGE 65 WEST OF THE SIXTH PRINCIPAL MERIDIAN, COUNTY OF EL PASO, STATE OF COLORADO



GROUND COVERS		
120,048 SF	3/4" DECORATIVE ROCK	MEDIUM
2,500 SF	FUNCTIONAL TURF SOD (DOG PARKS AND ACTIVE OPEN SPACE) TO COMPLY WITH THE NEW STATE BILLS NATIVE SEEDING 27% WESTERN WHEATGRASS, 18% BLUE GRAMA, 15% BUFFALO GRASS, 13% SIDEOATS GRAMA, 12% SHEEP FESCUE, 10% GREEN NEEDLEGRASS, AND 5% SAND DROPSSEED	HIGH
78,526 SF		LOW

LIETZKE, KRISTEN, 4/22/2026 10:50 AM

E PLATE AVENUE (CO-24)

HR GREEN - COLORADO SPRINGS 1975 RESEARCH PARKWAY SUITE 160 COLORADO SPRINGS, CO 80920 PHONE: 719.300.4140 FAX: 713.965.0044

DRAWN BY: KAL JOB DATE: 4/21/2026
 APPROVED: BKP JOB NUMBER: ---
 CAD DATE: 4/22/2026
 CAD FILE: J:\2025\2502477\CAD\DWG\CISDPLandscape Plan

NO.	DATE	BY	REVISION DESCRIPTION

HRGreen
 HR GREEN - COLORADO SPRINGS
 1975 RESEARCH PARKWAY SUITE 160
 COLORADO SPRINGS, CO 80920
 PHONE: 719.300.4140
 FAX: 713.965.0044

HILLPOINTE APARTMENTS AT PETERSON
 HILLPOINTE, LLC.
 COLORADO SPRINGS, EL PASO COUNTY, COLORADO

SITE DEVELOPMENT PLAN
 LANDSCAPE PLAN

SHEET
 LA
 2

PCD FILE NO.:

