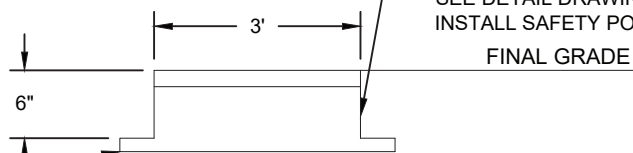


LADDER RUNGS AT 12" O.C.
CAST IN VAULT WITH FIRST
RUNG 3" BELOW TOP OF VAULT
ROOF SLAB.

NOTE:
FOR BACKFLOW PREVENTION
ASSEMBLY SEE DETAIL
DRAWING **B4-9** AND **B4-10**.

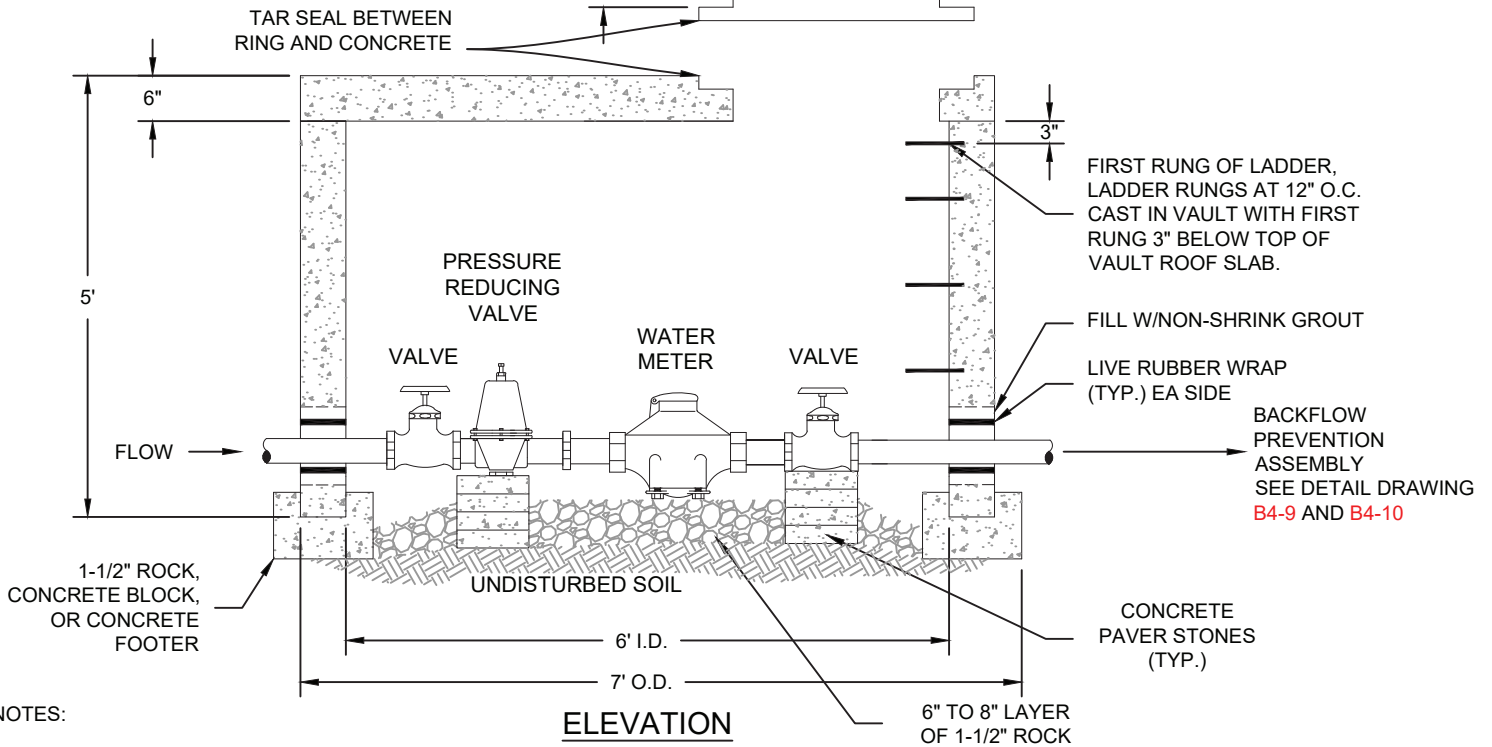
ADD RISERS AS NECESSARY TO MEET FINAL
GRADE. WHERE DETERMINED NECESSARY A
CONCRETE RISER SHALL BE FORMED ON THE
ROOF OF THE VAULT TO MATCH THE SLOPE OF
FINAL GRADE. THE RISER SHALL BE A CIRCULAR
RING OF 6 INCHES THICK AND A MIN. OF 3" HIGH.
SEE DETAIL DRAWING **A6-4**.
INSTALL SAFETY POST.

PLAN



TAR SEAL BETWEEN
RING AND CONCRETE

FINAL GRADE



FIRST RUNG OF LADDER,
LADDER RUNGS AT 12" O.C.
CAST IN VAULT WITH FIRST
RUNG 3" BELOW TOP OF
VAULT ROOF SLAB.

FILL W/NON-SHRINK GROUT

LIVE RUBBER WRAP
(TYP.) EA SIDE

BACKFLOW
PREVENTION
ASSEMBLY
SEE DETAIL DRAWING
B4-9 AND **B4-10**

1-1/2" ROCK,
CONCRETE BLOCK,
OR CONCRETE
FOOTER

PRESSURE
REDUCING
VALVE

VALVE

WATER
METER

VALVE

UNDISTURBED SOIL

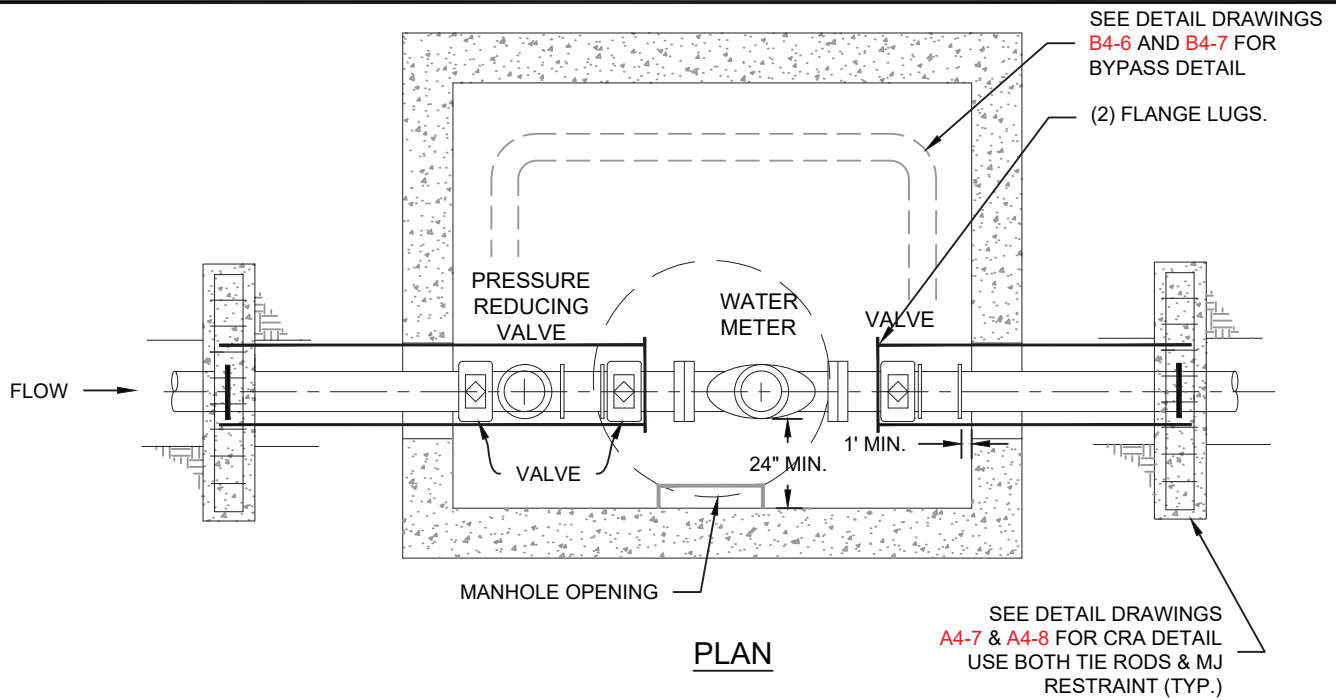
CONCRETE
PAVER STONES
(TYP.)

ELEVATION

6" TO 8" LAYER
OF 1-1/2" ROCK

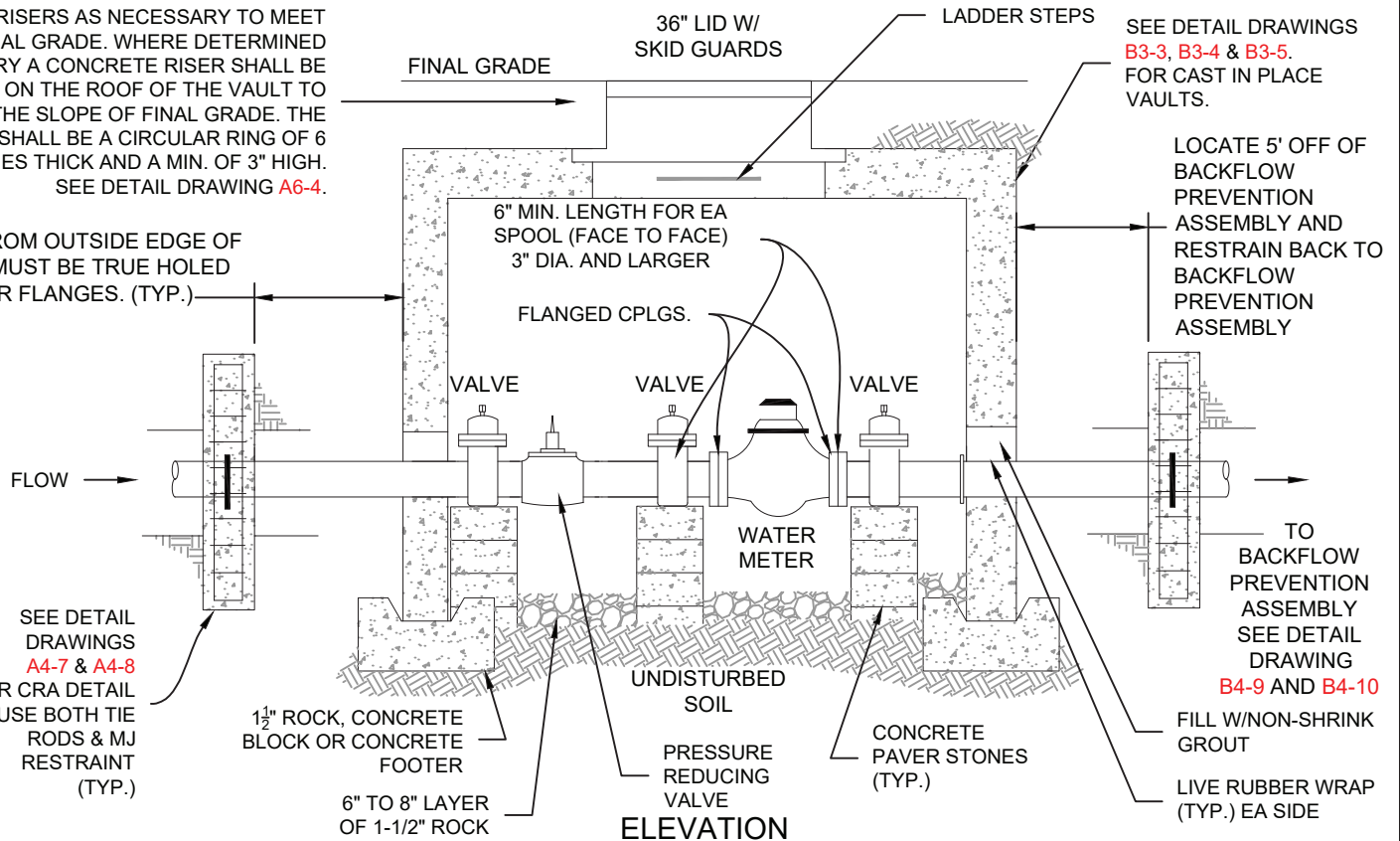
NOTES:

1. REFER TO DETAIL DRAWINGS **B4-4**, **B4-5** AND **B4-8** FOR METER INSTALLATION REQUIREMENTS.
2. THE METER MUST BE INSTALLED WITH THE CLEARANCE DIMENSIONS AS SHOWN IN DETAIL DRAWINGS **B4-19** THRU **B4-22**. ONE SIDE OF THE METER SHALL BE FREE FROM ANY OBSTRUCTION. 3' MINIMUM CLEARANCE IS REQUIRED ABOVE AND IN FRONT OF THE METER.
3. THE PRESSURE REDUCING VALVE IS TO BE INSTALLED ON THE INLET SIDE OF METER.
4. PRECAST CONCRETE VAULT SHALL BE DESIGNED FOR HS-20 TRAFFIC LOADING CONDITIONS AND 300 PSF SURCHARGE LOAD.
5. SEE DETAIL DRAWING **B3-5** FOR FOOTER DIMENSIONS AND STRUCTURAL REQUIREMENTS.
6. NO DRAIN VALVES, OUTLETS OR BRANCH LINES SHALL BE LOCATED BEFORE THE APPROVED BACKFLOW PREVENTION ASSEMBLY.



ADD RISERS AS NECESSARY TO MEET FINAL GRADE. WHERE DETERMINED NECESSARY A CONCRETE RISER SHALL BE FORMED ON THE ROOF OF THE VAULT TO MATCH THE SLOPE OF FINAL GRADE. THE RISER SHALL BE A CIRCULAR RING OF 6 INCHES THICK AND A MIN. OF 3" HIGH. SEE DETAIL DRAWING A6-4.

5' MIN. FROM OUTSIDE EDGE OF VAULT - MUST BE TRUE HOLED TO METER FLANGES. (TYP.)



NOTES:

1. REFER TO DETAIL DRAWINGS B4-4, B4-5 AND B4-8 FOR METER INSTALLATION REQUIREMENTS.
2. THE METER MUST BE INSTALLED WITH THE CLEARANCE DIMENSIONS AS SHOWN IN DETAIL DRAWING B4-19 THRU B4-22. ONE SIDE OF THE METER SHALL BE FREE FROM ANY OBSTRUCTION. 3' MINIMUM CLEARANCE IS REQUIRED ABOVE AND IN FRONT OF THE METER.
3. TIE RODS TO BE CATHODICALLY PROTECTED PER DETAIL DRAWING A8-11.
4. PRECAST CONCRETE VAULTS SHALL BE DESIGNED FOR HS-20 TRAFFIC LOADING CONDITIONS AND 300 PSF SURCHARGE LOAD.
5. SEE DETAIL DRAWING B3-5 FOR FOOTER DIMENSIONS AND STRUCTURAL REQUIREMENTS.
6. SEE DETAIL DRAWINGS B3-3 AND B3-5 FOR PRECAST VAULT DIMENSIONS.
7. NO DRAIN VALVES, OUTLETS OR BRANCH LINES SHALL BE LOCATED BEFORE THE APPROVED BACKFLOW PREVENTION ASSEMBLY.
8. BACKFLOW PREVENTION ASSEMBLY MUST BE LOCATED NO MORE THAN 10' FROM THE OUTSIDE EDGE OF VAULT.



**PRE-CAST CONCRETE VAULT
FOR 3" THRU 10" METERS
W/BYPASS**

B3-2

DATED 08/2022