

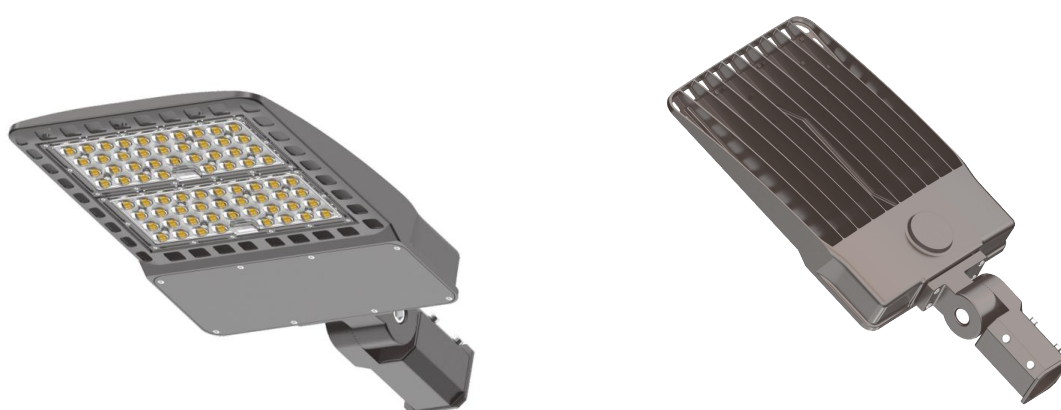
# Production Specification Sheet

*SLE-200-Series*

## ■ General Description

SLE Locke series LED street light use LUMILEDS LUXEON 3030 SMD LED , high thermal conductivity aluminum lamp shell and radiating body, high light transmittance lens. Compared with the traditional street light, it has lots of unique features, such as the installation angle is adjustable,multiple light distribution options,more efficient, energy-saving, more security and environmental, long lifespan, quicker response and higher CRI. It will be the best to replace traditional high pressure street light, besides, it's also the best choice to light square, school personal garden and so on.

## ■ Product Pictures



## ■ Features 特点

- A variety of mounting brackets are available for selection



- There are many types of light distribution, and many lenses are available.
- With entire aluminum housing structure, the led contact the heat sink closely, optimize heat dissipation.
- No bad glare, stroboscope or start up delay, eliminating the disadvantage of the traditional street light.
- Environmental-friendly without contamination, with no Lead, Hg or any other pollution elements, no pollution to the environment.
- Wide input voltage, high efficiency, constant current and constant voltage switch power supply.
- Specially designed for outdoor using, with self-leaning mechanism lead to less dust and water accumulation, reducing, maintenance, IP65 rated.
- Separate drive box design, enhancing the driver's efficiency and stability.

# Production Specification Sheet

SLE-200-Series

## ■ Applications

- Freeway, highway, city cross road, urban street and boulevard.
- Parking lot, school, park, factory, residential district.

## ■ Technical Parameters

### ● Power Supply parameters

Input Power Consumption	150±2W	200±2W
Input Voltage/Frequency	90-305VAC 47-63Hz	90-305VAC 47-63Hz
Input Current	1.33A/115VAC, 0.69A/230VAC	1.77A/115VAC, 0.92A/230VAC
Output Voltage	DC48±1V	DC48±1V
Output Current	3.15±0.1A	4.05±0.1A
Power Efficiency	≥94% at 230VAC	≥93% at 230VAC
Power Factor	PF>0.98/115VAC PF>0.95/230VAC	PF>0.98/115VAC PF>0.95/230VAC

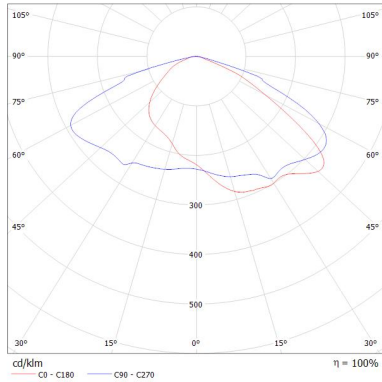
### ● Lighting parameters

Product Model	SLE-200-150W	SLE-200-200W
LED Quantity	192PCS (6S16P*2)	288PCS (8S18P*2)
LED Consumption	140W	185W
System Consumption	150±2W	200±2W
LED Luminous Efficiency	>145Lm /W	>150Lm /W
Lamp's Initial Flux	>21500Lm	>26000Lm
Color Temperature	2700K~6500K	2700K~6500K
Lamp's Luminous Efficiency	≥130Lm /W	≥130Lm /W
Illumination Uniformity	>0.6	
Lumen Maintenance	70%(50,000Hrs)	
Optical Design	PC LENS PC 透镜	
Beam Angle	Type III	
Driver Working Temperature	-30℃ ~ +50℃	
Storage Temperature	-40℃ ~ +70℃	
Appliance Class	Class I I类灯具	
Life-span	50,000Hrs	
Lamp Material	Aluminum alloy 铝合金	
The color of the lamp shell	Brown 黑色	
Mounting	Pole installation 灯杆安装	
Installation angle adjustable range	0° ~90°	

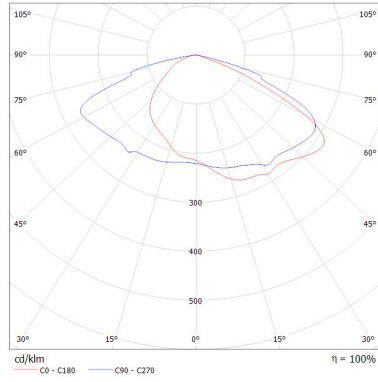
# Production Specification Sheet

SLE-200-Series

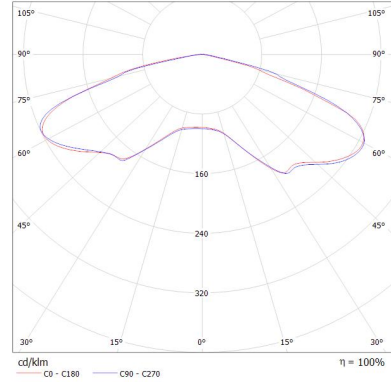
● Light distribution diagram



TYPE III



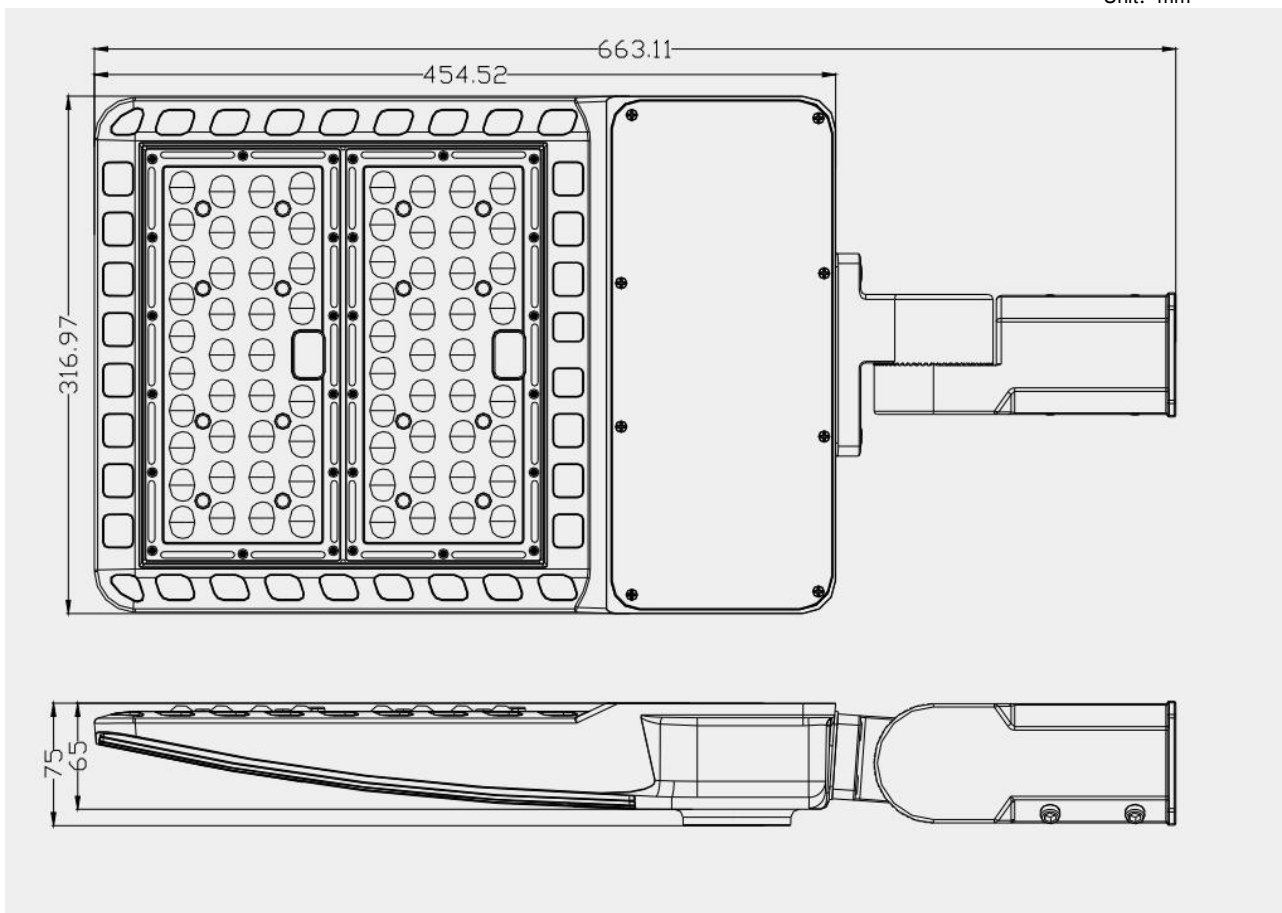
TYPE IV



TYPE V

■ Dimension

Unit: mm



# Production Specification Sheet

SLE-200-Series

## ■ Packing /weight 包装/重量

The size of the carton 外箱尺寸(L×W×H)	710*370*135mm
Qty/carton	1PC
The net weight of lamp 灯具净重	8±0.2Kg
Qty weight 总重量	8.8±0.5Kg

## ■ Note 注意事项

- If the lamp outer cable or cord is damaged, must be performed by qualified professionals for replacement, in order to avoid danger.  
如果灯具的外部电缆或者软线损坏了,必须由具有资质的专业人士进行更换,以免发生危险.
- If it is found that the abnormal lamps work, must first cut off the power input.  
如果发现灯具工作异常,必须先切断输入电源.
- Please input end of the power supply to the corresponding protection measures, and guarantee the input voltage stability.  
请在电源输入端做好相应的防雷措施,并保证输入电压的稳定.
- Please mount the lamp in a dry, ventilation, clean environment, and regular cleaning and maintenance.  
请将灯具安装在干燥、通风、干净的环境中,并定期做清洁保养.
- Lamps have high voltage parts inside, do not disassemble, so as to avoid the electric shock.  
灯具内存在高压部分,请勿自行拆卸,以免触电.

## ■ Product quality assurance 产品质保

All of our product's warranty period is 5 years for the built-in constant current power supply, LED light source guaranteed 5 years. In the normal conditions of use, quality assurance is based on product right preservation, installation, use and maintenance. Due to improper installation and use of product operation procedure, and cause damage to the product, do not belong to this warranty scope. To guarantee quality problems, the company will choose the repair, exchange (components) or replacement products give the solution method, exceed the time limit will be appropriate charge cost of raw materials, labor.

所有本公司生产之产品内置恒流电源保用 5 年,LED 光源保用 5 年,在正常使用下,质量保证是基于产品的正确保存,安装,使用和维护.由于安装使用不当,违反产品操作规程,而引起的产品损坏,不属于本保证范围之内.对保修期内的质量问题,本公司将选择修复,调换(零部件)或更换产品等方法给予解决,超期将适当收取材料费,人工费.