

Seed Mix B with Wildflowers

30% Ephraim Crested Wheatgrass
25% Dwarf Perennial Ryegrass
20% SR3200 Blue Fescue
15% Nuflens Canada Bluegrass
10% Chewings Fescue
15% Blue Grama
Wildflowers: 615 Western Mix

Note: Low Gro Mix available from:
Arkansas Valley Seed Solutions
(877) 957-3337

Wildflower Mix available from:
Applewood Seed Co.
(303) 431-7333

APPLICATION RATE: Native Grass Mix: 40 lbs./acre (or as recommended by supplier)
Wildflower Mix: 6 oz./1,000 s.f. or 8-10 lbs./acre
Hydromulch: 2200 lbs./acre mulch, 100 lbs./acre tackifier.

APPLICATION METHOD: Broadcast seed by hand or with a drop spreader.
Manually rake seed into prepared soil.
After seeding apply green hydromulch and tackifier.

Seed Mix A

15% Western Wheatgrass
15% Big Bluestem
15% Thickspike Wheatgrass
10% Sideoats Grama
15% Little Bluestem
15% Blue Grama
15% Annual Rye

APPLICATION RATE: Native Grass Mix: 3 lbs./1,000s.f. or 130 lbs./acre
Hydromulch: 2200 lbs./acre mulch, 100 lbs./acre tackifier

APPLICATION METHOD: Broadcast seed by hand or with a drop spreader.
Manually rake seed into prepared soil.
After seeding apply green hydromulch and tackifier.

Seed Mix C

45% Reed Canarygrass
25% Improved Meadow Bromo
25% Garrison Creeping Foxtail (Coated)
5% Climax, Timothy

APPLICATION RATE: Native Grass Mix: 10 lbs./acre (or as recommended by supplier)
Hydromulch: 2200 lbs./acre mulch, 100 lbs./acre tackifier

APPLICATION METHOD: Broadcast seed by hand or with a drop spreader.
Manually rake seed into prepared soil.
After seeding apply green hydromulch and tackifier.

TREE REQUIREMENTS				
Plant Category	Street (Classification)	Street Frontage Length	Required Trees	Provided Trees
(RR)	Rex Road	1167'	47 (1 per 25')	47
(LR)	Lambert Road (Collector)	611'	25 (1 per 25')	25
(SR)	Sunrise Ridge Drive (Local)	425'	15 (1 per 30')	15
(RP)	Rolling Peaks Drive (Local)	584'	20 (1 per 30')	20

- ### LANDSCAPE NOTES
- CONTRACTOR TO UTILIZE STOCKPILED TOPSOIL FROM GRADING OPERATION AS AVAILABLE, OR IMPORT AS REQUIRED AND TILL INTO TOP 6" OF SOIL.
 - FOR GRADES REFER TO CIVIL ENGINEERS DRAWINGS.
 - ALL TREES TO RECEIVE A BACK FILL MIXTURE OF 50% IMPORTED LOAMY TOPSOIL, 25% PEAT MOSS, AND 25% EXISTING SOIL.
 - A FULLY AUTOMATED SPRINKLER IRRIGATION SYSTEM WILL DRIP IRRIGATE ALL TREES.
 - ALL TREES TO BE STAKED WITH WOOD STAKES. FOR 3" CAL. DECIDUOUS TREES AND EVERGREEN TREES OVER 6' USE 3 WOOD STAKES (STAKE TO GRADU LEVEL).
 - MINIMUM INSPECTIONS WILL INCLUDE SELECTION OF SPECIMEN PLANT MATERIALS AT CONTRACTOR'S NURSERY OR WHOLESALE, APPROVAL OF PLANT LOCATION STAKES BEFORE PLANT MATERIALS ARE INSTALLED, 'PUNCH LIST' SITE INSPECTION, AND FINAL INSPECTION SITE VISITS.
 - PRE-CONSTRUCTION MEETING/SELECTION OF PLANT MATERIALS AT THE NURSERY AND REVIEW OF SPECIFIED LANDSCAPE/IRRIGATION SUBMITTALS.
 - IRRIGATION MAINLINE INSPECTION - PRESSURE TEST AND REVIEW OF MODEL IRRIGATION.
 - IRRIGATION 95%/ PUNCH INSPECTION.
 - IRRIGATION FINAL ACCEPTANCE INSPECTION.
 - LANDSCAPE 50% INSPECTION - 1/2 THROUGH ENTIRE PROJECT
 - LANDSCAPE 95% INSPECTION/ PUNCH INSPECTION.
 - LANDSCAPE FINAL ACCEPTANCE INSPECTION AND COUNTY LANDSCAPE AND IRRIGATION AFFIDAVITS.
 - PLANTS SHALL BE WARRANTED FOR THE DURATION OF TWO FULL YEARS AFTER THE INSTALLATION (WARRANTY SHALL COVER 100% OF THE REPLACEMENT COST).
 - ALL PLANTS TO RECEIVE 3 INCH DEPTH OF SHREDDED CEDAR WOOD MULCH UNLESS OTHERWISE SPECIFIED. MULCH RINGS TO BE 15" DIA. FOR 5 GALLON SHRUBS AND 36" DIA. FOR TREES NOT PLANTED IN BEDS, WITH THE EXCEPTION OF BLUEGRASS SOD AREAS IN WHICH TREES SHALL RECEIVE 60" DIA. MULCH RING. AVAILABLE FROM C&C SAND CEDAR MULCH (719)471-7222.
 - CONTRACTOR IS RESPONSIBLE FOR INSTALLING ALL PLANT MATERIAL SHOWN ON THIS PLAN. IF ANY DISCREPANCIES ARE FOUND BETWEEN THE LANDSCAPE PLAN AND THE PLANT SCHEDULE, THE QUANTITIES SHOWN ON THE LANDSCAPE PLAN SUPERSEDE THOSE SHOWN ON THE PLANT SCHEDULE.
 - CONTACT THE LANDSCAPE ARCHITECT FOR ANY DISCREPANCIES WITH THE DRAWINGS OR VARIATIONS IN THE FIELD.
 - CALL FOR UTILITY LOCATIONS PRIOR TO ANY PLANT INSTALLATION.
 - LANDSCAPING IN THE SIGHT TRIANGLES SHALL NOT EXCEED 18" IN HEIGHT.
 - FENCING DETAILS ARE TYPICAL AND MAY BE SUBJECT TO MINOR VARIATIONS IN MATERIALS. ANY VARIATION SHALL BE AUTHORIZED BY THE DEVELOPMENT SERVICES DIRECTOR, AFTER REVIEW OF ALTERNATE PLANS, DETAILS, OR OTHER DOCUMENTATION IN SUPPORT OF THE VARIATION.
 - SOD SHALL BE KENTUCKY BLUEGRASS BLEND. SOD SHALL BE LAID ON A FIRM BED WITH TIGHT JOINTS WITH NO VOIDS BETWEEN STRIPS. ANY MOUNDS OR DEPRESSIONS OCCURRING AFTER INSTALLATION SHALL BE CORRECTED PRIOR TO ACCEPTANCE. SOD TO BE FERTILIZED ACCORDING TO GROWERS RECOMMENDATIONS. SUBMIT PRODUCT INFORMATION TO L.A. FOR APPROVAL PRIOR TO INSTALLATION.
 - ALL SOD/TURF, ROCK, & SHRUB BEDS TO BE SEPARATED BY SOLID STEEL EDGING. ALL SHRUB BEDS TO BE ENCLOSED BY STEEL EDGING. SEPARATION BETWEEN SOD AND NATIVE SEED, AND BETWEEN ALTERNATIVE TURF AND NATIVE SEED SHALL BE A MOWED STRIP, WITHOUT STEEL EDGING.

Land Planning
Landscape
Architecture
Urban Design

NES

N.E.S. Inc.
619 N. Cascade Ave., Ste. 200
Colorado Springs, CO 80903

Tel. 719.471.0073
Fax 719.471.0267

www.nescolorado.com

© 2012, All Rights Reserved.

Rolling Hills
Ranch Filings 1-3
At Meridian
Ranch

PUD Development Plan /
Preliminary Plan

DATE: December 16, 2019
PROJECT MGR: J. Romero
PREPARED BY: B. Iten

ENTITLEMENT

DATE:	BY:	DESCRIPTION:
03.09.2020	B.I.	Per County Comments
04.23.2020	B.I.	Per County Comments

LANDSCAPE
DETAILS

22

OF 34



P:\GTL\Meridian Ranch\Drawings\Planning\Rolling Hills\Drawings\Planning\Final\Land\PUF-F-L-2_RollingHills.dwg [Plan (23)] 4/23/2020 11:17:30 PM bten

Land Planning
Landscape
Architecture
Urban Design

NES

N.E.S. Inc.
619 N. Cascade Ave., Ste. 200
Colorado Springs, CO 80903

Tel. 719.471.0073
Fax 719.471.0267

www.nescolorado.com

© 2012, All Rights Reserved.

PLANNING LANDSCAPE ARCHITECT

IN ASSOCIATION WITH

PROJECT INFO

ENTITLEMENT

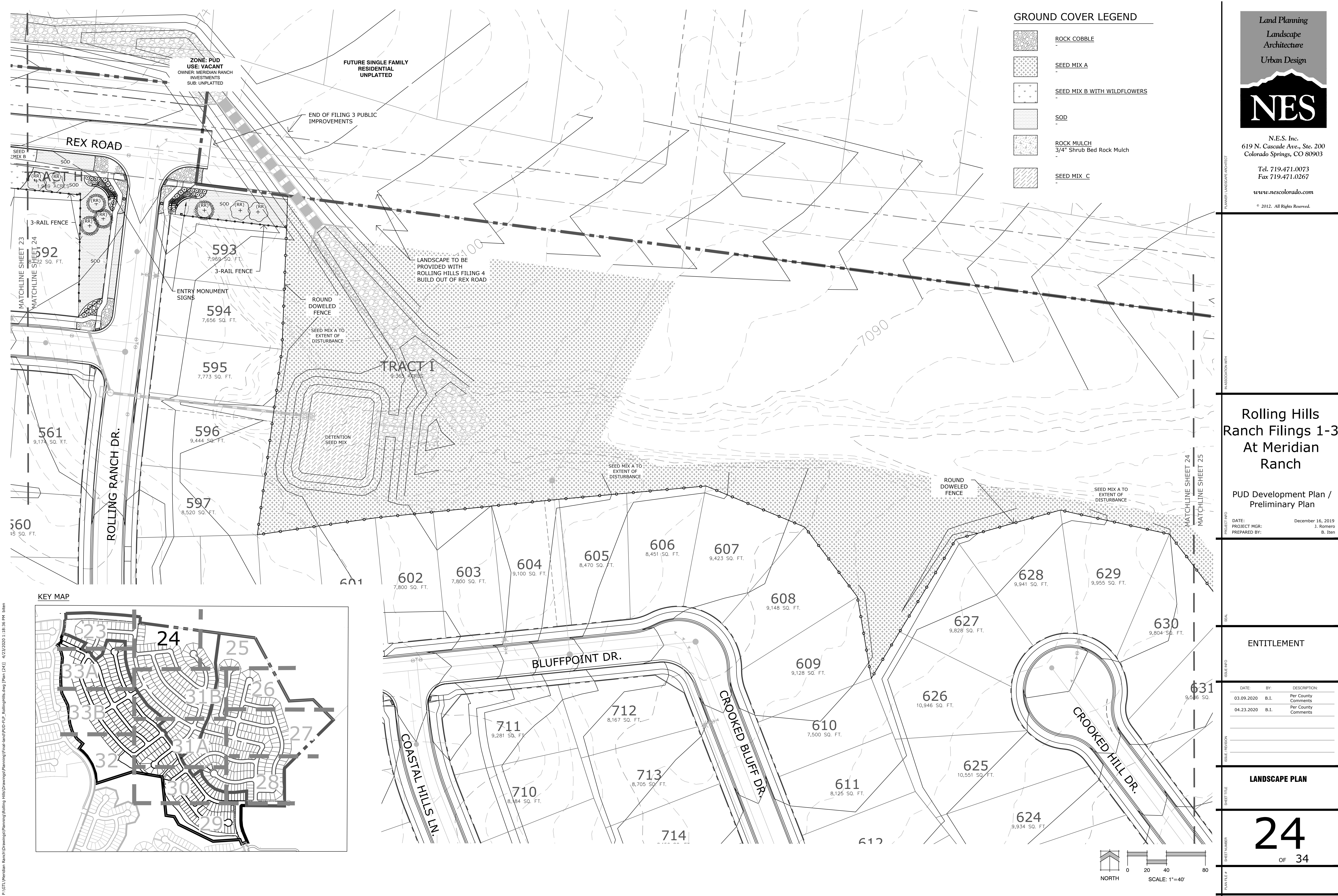
DATE: 03.09.2020
BY: B.I.
DESCRIPTION: Per County Comments

DATE: 04.23.2020
BY: B.I.
DESCRIPTION: Per County Comments

LANDSCAPE PLAN

23
OF 34

PLANTING



PUD Development Plan /
Preliminary Plan

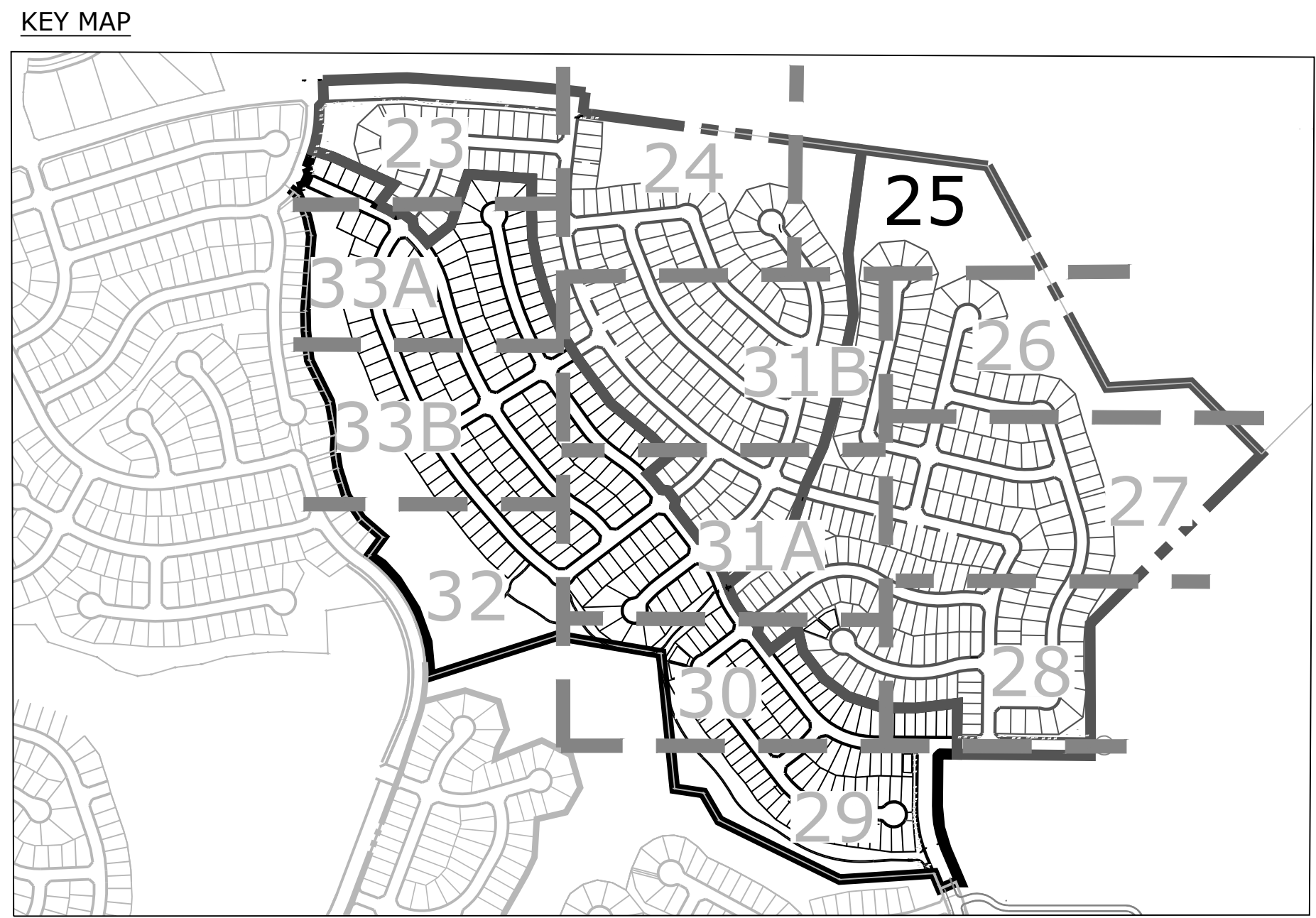
DATE: December 16, 2011
PROJECT MGR: J. Rome
PREPARED BY: B. Ite

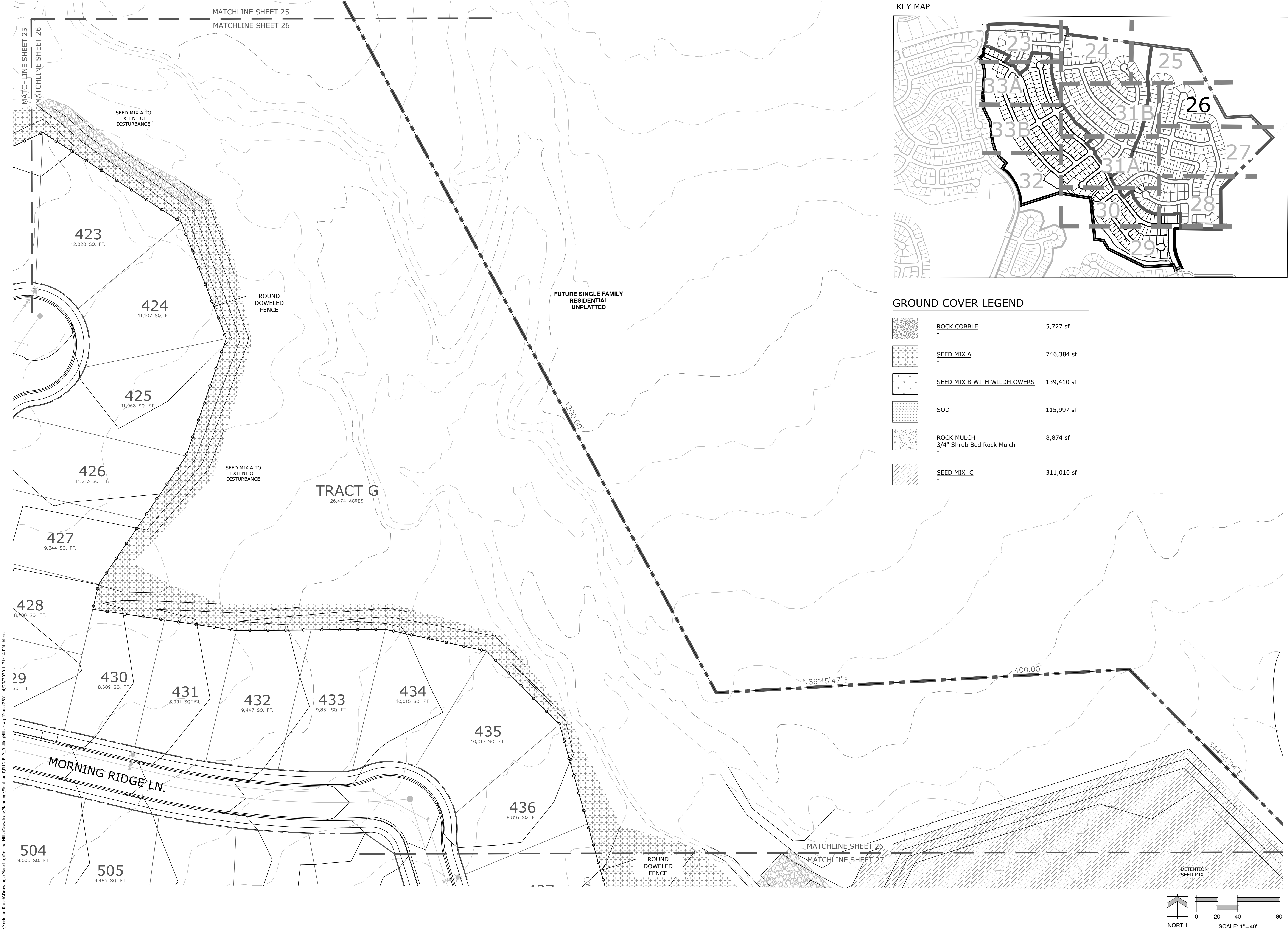
ENTITLEMENT

DATE:	BY:	DESCRIPTION:
03.09.2020	B.I.	Per County Comments
04.23.2020	B.I.	Per County Comments

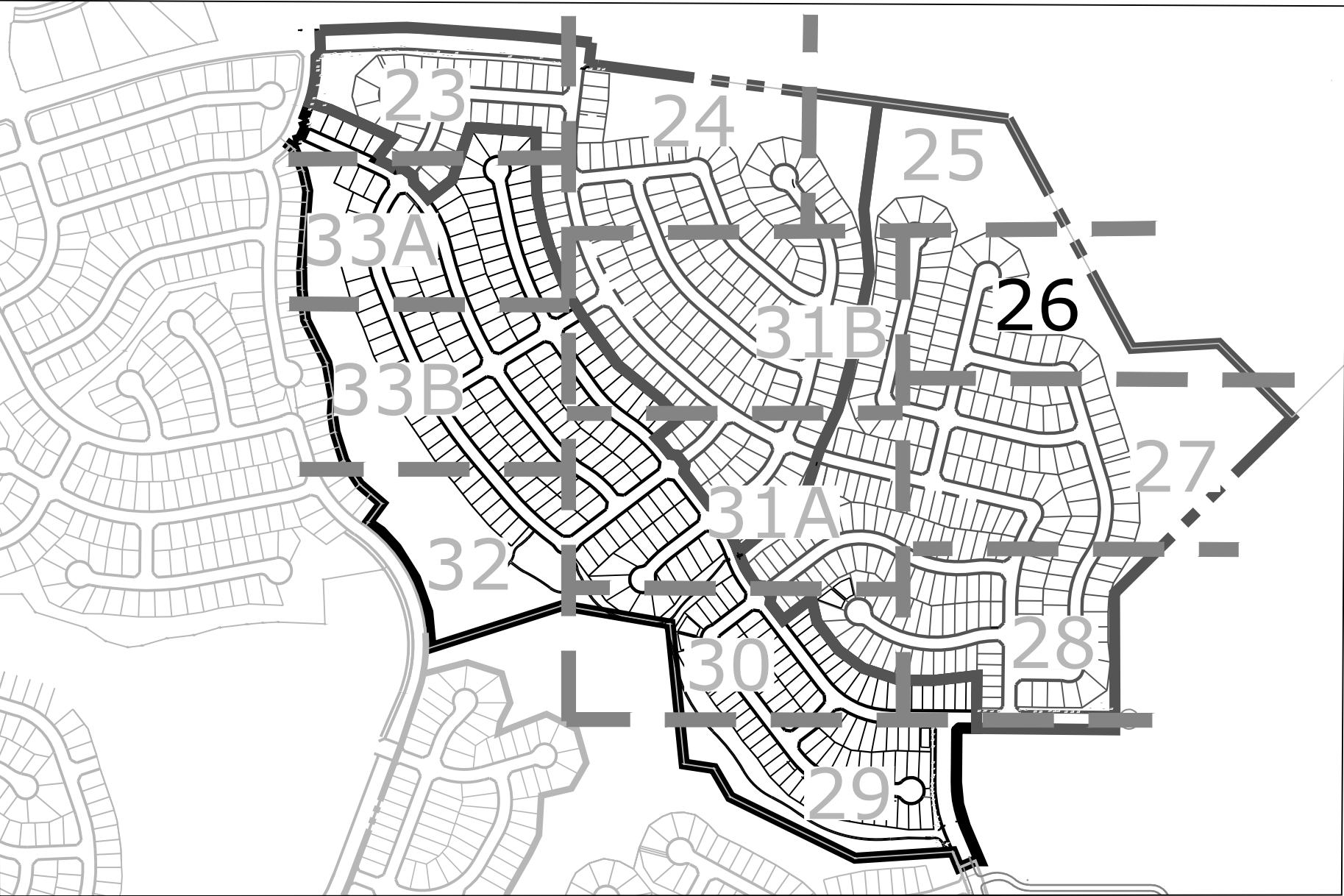
LANDSCAPE PLAN

25
OF 34





KEY MAP



GROUND COVER LEGEND

	ROCK COBBLE	5,727 sf
	SEED MIX A	746,384 sf
	SEED MIX B WITH WILDFLOWERS	139,410 sf
	SOD	115,997 sf
	ROCK MULCH 3/4" Shrub Bed Rock Mulch	8,874 sf
	SEED MIX C	311,010 sf

P:\GTL\Meridian Ranch\Drawings\Rolling Hills\Drawings\Final\Land\PU\H-LP_RollingHills.dwg [Plan (26)] 4/23/2020 1:21:14 PM bten

Land Planning
Landscape
Architecture
Urban Design

NES

N.E.S. Inc.
619 N. Cascade Ave., Ste. 200
Colorado Springs, CO 80903

Tel. 719.471.0073
Fax 719.471.0267

www.nescolorado.com

© 2012. All Rights Reserved.

PLANNING, LANDSCAPE ARCHITECT
IN ASSOCIATION WITH

Rolling Hills
Ranch Filings 1-3
At Meridian
Ranch

PUD Development Plan /
Preliminary Plan

PROJECT INFO
DATE: December 16, 2019
PROJECT MGR: J. Romero
PREPARED BY: B. Iten

SEAL

ENTITLEMENT

DATE: 03.09.2020 BY: B.I. DESCRIPTION: Per County Comments
04.23.2020 B.I. Per County Comments

ISSUE / REVISION

LANDSCAPE PLAN

SHEET TITLE

26
OF 34

SHEET NUMBER

PLANTING



GROUND COVER LEGEND

- ROCK COBBLE
- SEED MIX A
- SEED MIX B WITH WILDFLOWERS
- SOD
- ROCK MULCH
3/4" Shrub Bed Rock Mulch
- SEED MIX C

KEY MAP



Land Planning
Landscape
Architecture
Urban Design

NES

N.E.S. Inc.
619 N. Cascade Ave., Ste. 200
Colorado Springs, CO 80903

Tel. 719.471.0073
Fax 719.471.0267

www.nescolorado.com

© 2012, All Rights Reserved.

Rolling Hills
Ranch Filings 1-3
At Meridian
Ranch

PUD Development Plan /
Preliminary Plan

DATE: December 16, 2019
PROJECT MGR: J. Romero
PREPARED BY: B. Iten

ENTITLEMENT

DATE:	BY:	DESCRIPTION:
03.09.2020	B.I.	Per County Comments
04.23.2020	B.I.	Per County Comments

LANDSCAPE PLAN

27
OF 34



Rolling Hills
Ranch Filings 1-3
At Meridian
Ranch

PUD Development Plan /
Preliminary Plan

DATE: December 16, 2019
PROJECT MGR: J. Romero
PREPARED BY: B. Iten

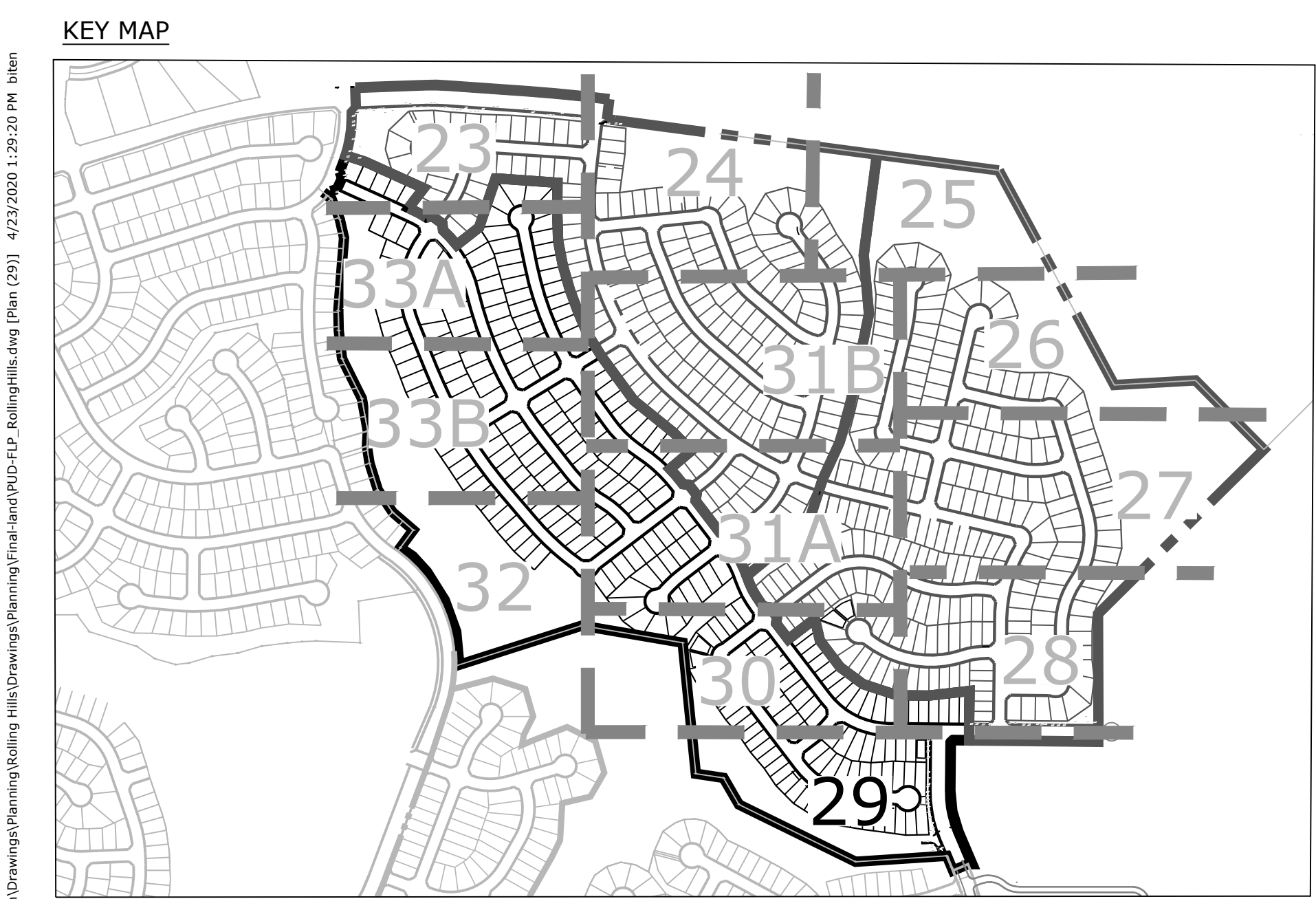
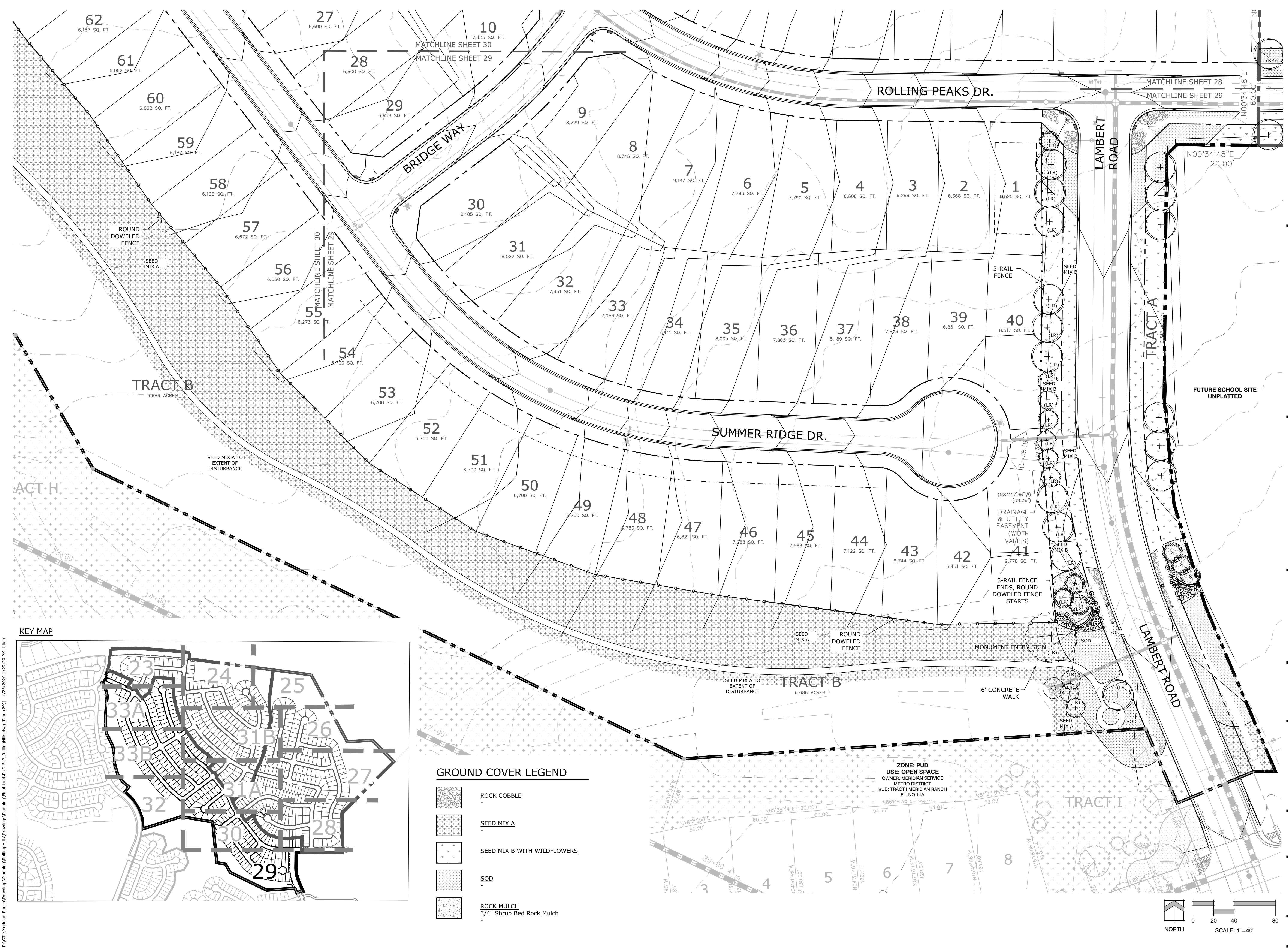
ENTITLEMENT

DATE:	BY:	DESCRIPTION:
03.09.2020	B.I.	Per County Comments
04.23.2020	B.I.	Per County Comments

LANDSCAPE PLAN

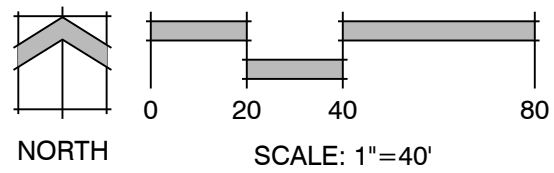
28
OF 34

P:\GTL\Meridian Ranch\Drawings\Planning\Rolling Hills\Drawings\Planning\Virtual Land\PUD-FIL-3_RollingHills.dwg [Plan (28)] 4/23/2020 1:27:28 PM bten



GROUND COVER LEGEND

- ROCK COBBLE
- SEED MIX A
- SEED MIX B WITH WILDFLOWERS
- SOD
- ROCK MULCH
3/4" Shrub Bed Rock Mulch



Land Planning
Landscape
Architecture
Urban Design

NES

N.E.S. Inc.
619 N. Cascade Ave., Ste. 200
Colorado Springs, CO 80903
Tel. 719.471.0073
Fax 719.471.0267
www.nescolorado.com
© 2012, All Rights Reserved.

Rolling Hills
Ranch Filings 1-3
At Meridian
Ranch

PUD Development Plan /
Preliminary Plan

DATE: December 16, 2019
PROJECT MGR: J. Romero
PREPARED BY: B. Iten

ENTITLEMENT

DATE:	BY:	DESCRIPTION:
03.09.2020	B.I.	Per County Comments
04.23.2020	B.I.	Per County Comments

LANDSCAPE PLAN

29
OF 34

P:\GTL\Meridian Ranch\Drawings\Planning\Rolling Hills\Drawings\Final\Land\PU\1-3_RollingHills.dwg [Plan (29)] 4/23/2020 1:29:20 PM bten

PUD Development Plan /
Preliminary Plan

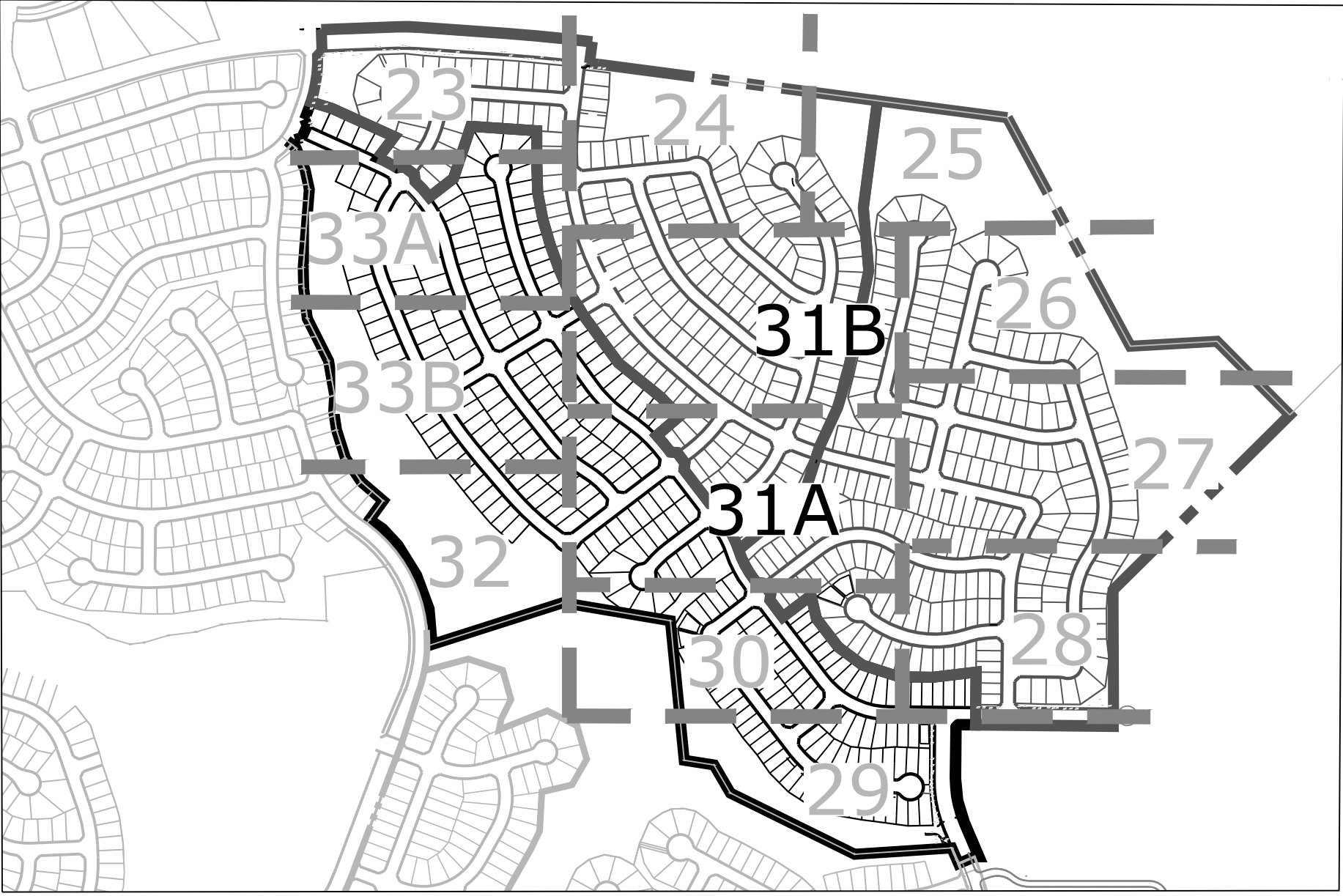
DATE: December 16, 2019
PROJECT MGR: J. Romero
PREPARED BY: B. Iten

LANDSCAPE PLAN

30
OF 34

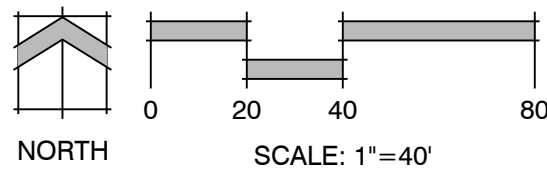
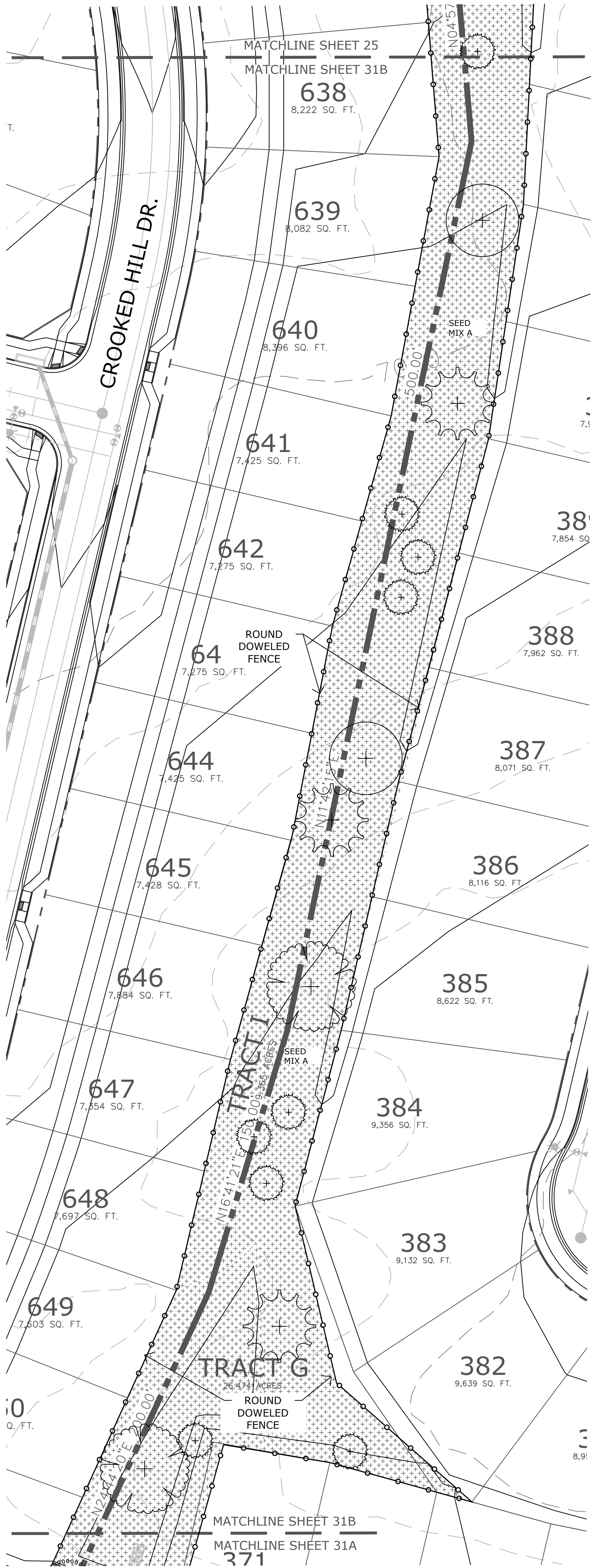
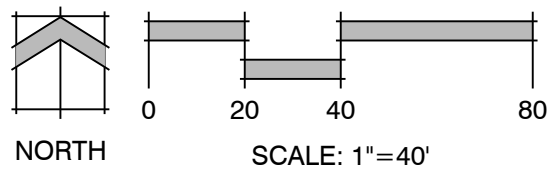


KEY MAP



GROUND COVER LEGEND

- ROCK COBBLE
- SEED MIX A
- SEED MIX B WITH WILDFLOWERS
- SOD
- ROCK MULCH
3/4" Shrub Bed Rock Mulch



Land Planning
Landscape
Architecture
Urban Design

NES

N.E.S. Inc.
619 N. Cascade Ave., Ste. 200
Colorado Springs, CO 80903
Tel. 719.471.0073
Fax 719.471.0267
www.nescolorado.com
© 2012, All Rights Reserved.

Rolling Hills
Ranch Filings 1-3
At Meridian
Ranch

PUD Development Plan /
Preliminary Plan

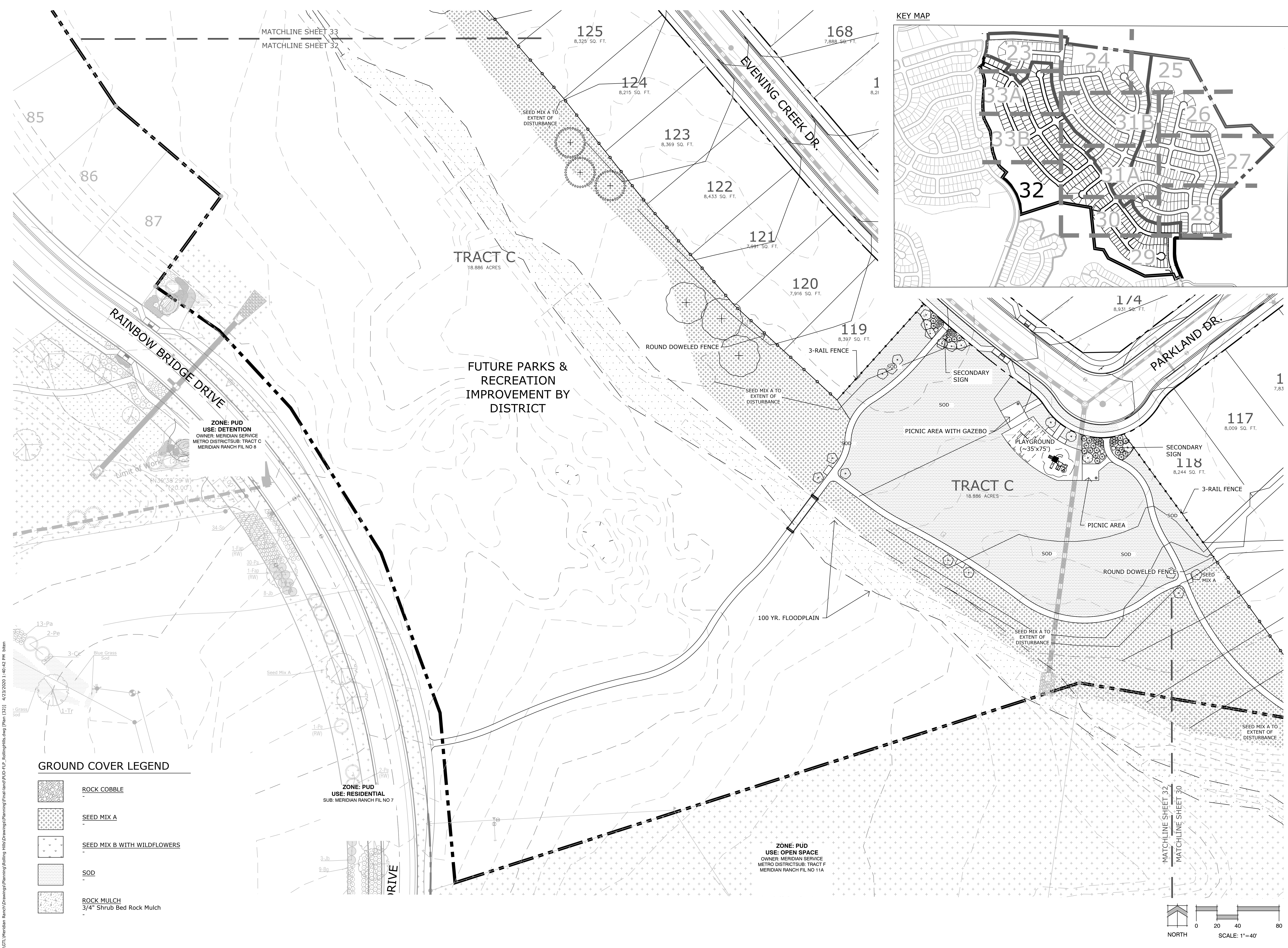
DATE: December 16, 2019
PROJECT MGR: J. Romero
PREPARED BY: B. Iten

ENTITLEMENT

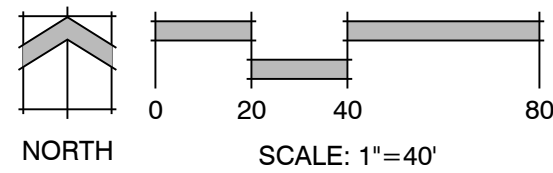
DATE:	BY:	DESCRIPTION:
03.09.2020	B.I.	Per County Comments
04.23.2020	B.I.	Per County Comments

LANDSCAPE PLAN

31
OF 34



- GROUND COVER LEGEND**
- ROCK COBBLE
 - SEED MIX A
 - SEED MIX B WITH WILDFLOWERS
 - SOD
 - ROCK MULCH
3/4" Shrub Bed Rock Mulch



Land Planning
Landscape Architecture
Urban Design

NES

N.E.S. Inc.
619 N. Cascade Ave., Ste. 200
Colorado Springs, CO 80903

Tel. 719.471.0073
Fax 719.471.0267

www.nescolorado.com

© 2012, All Rights Reserved.

Rolling Hills
Ranch Filings 1-3
At Meridian
Ranch

PUD Development Plan /
Preliminary Plan

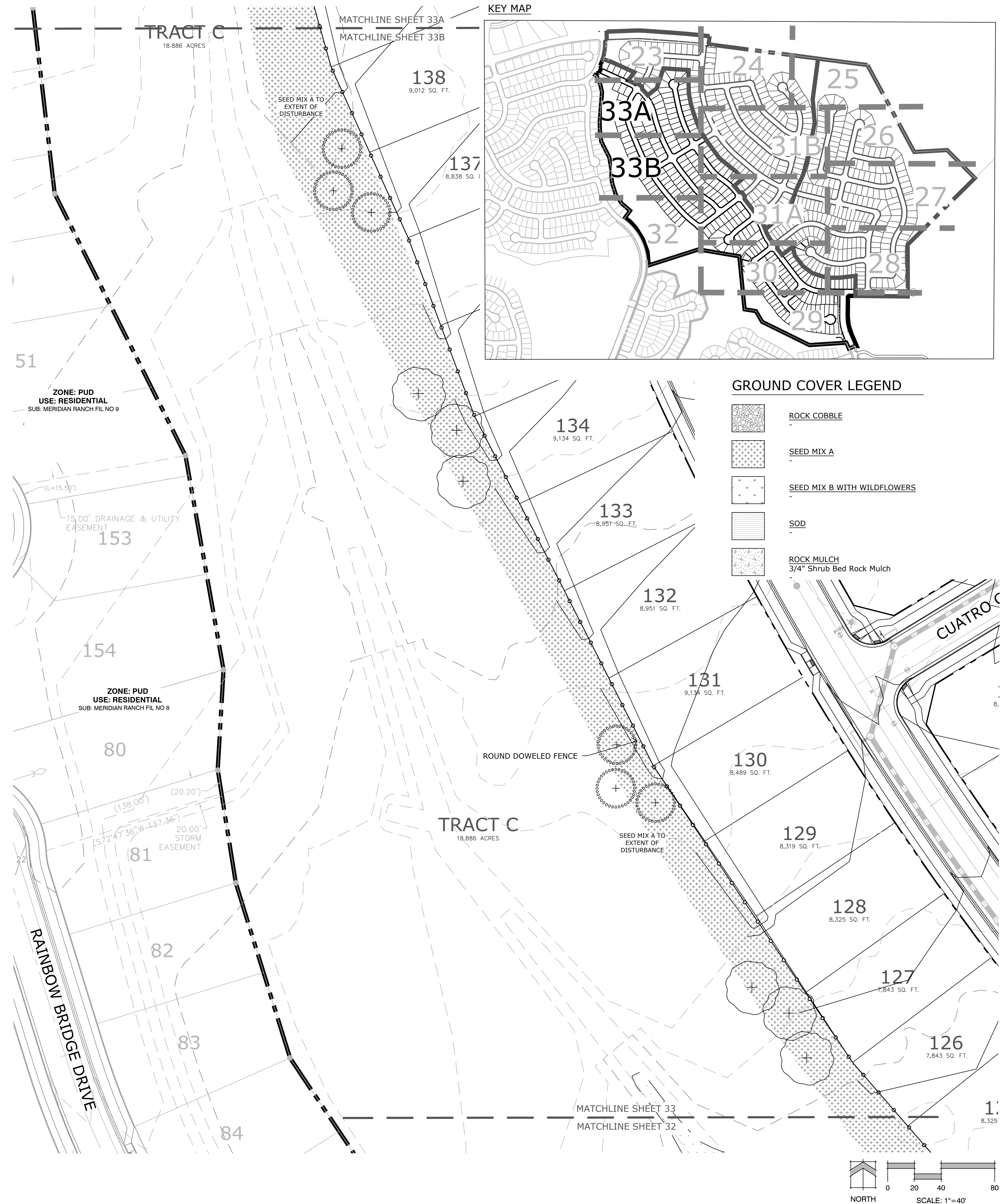
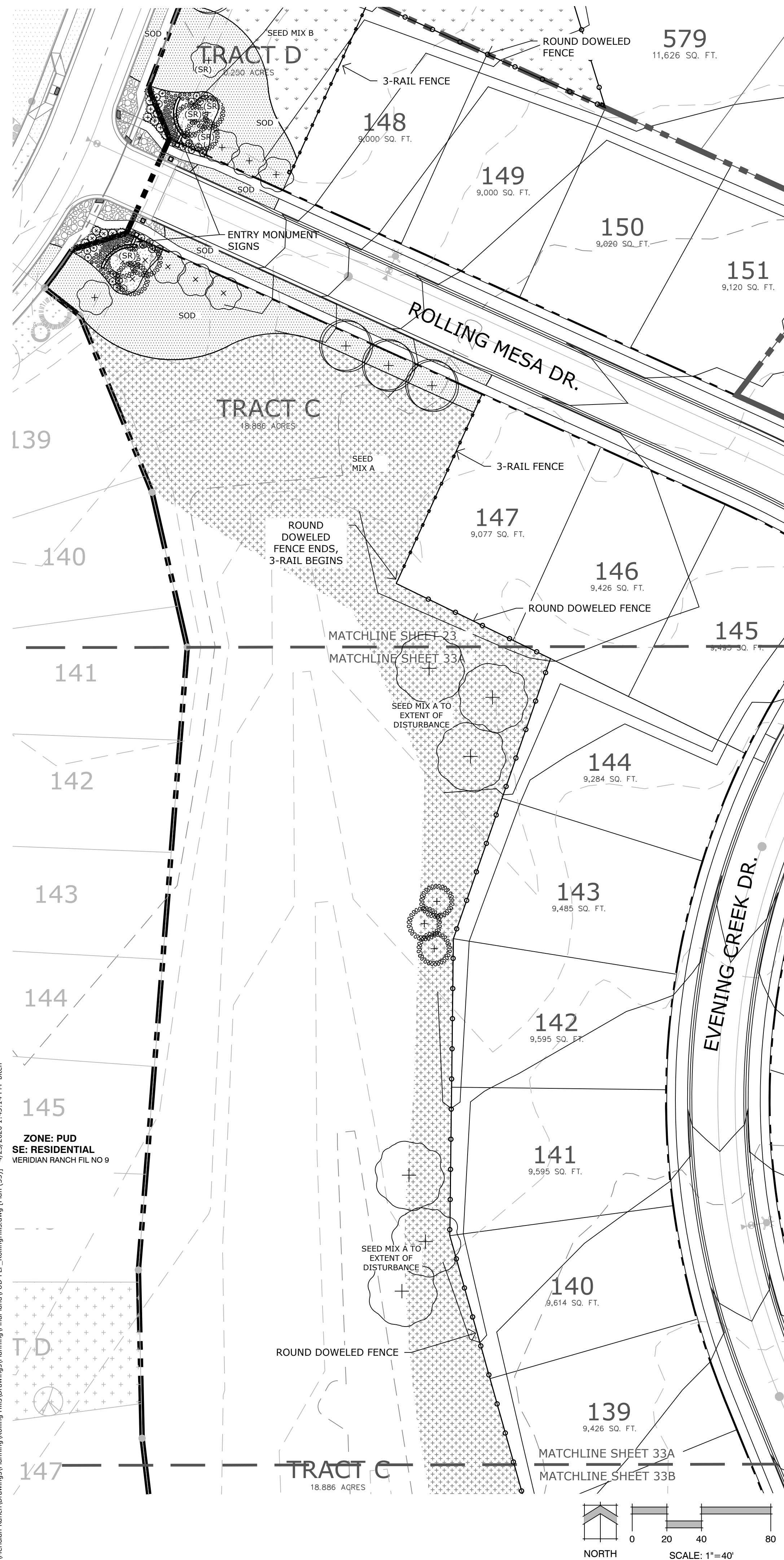
DATE: December 16, 2019
PROJECT MGR: J. Romero
PREPARED BY: B. Iten

ENTITLEMENT

DATE:	BY:	DESCRIPTION:
03.09.2020	B.I.	Per County Comments
04.23.2020	B.I.	Per County Comments

LANDSCAPE PLAN

32
OF 34



Rolling Hills
Ranch Filings 1-3
At Meridian
Ranch

PUD Development Plan /
Preliminary Plan

PROJECT INFO

DATE:	December 16, 2019
PROJECT MGR:	J. Romero
PREPARED BY:	B. Iten

ENTITLEMENT

DATE:	BY:	DESCRIPTION:
03.09.2020	B.I.	Per County Comments
04.23.2020	B.I.	Per County Comments

LANDSCAPE PLAN

33
OF 34