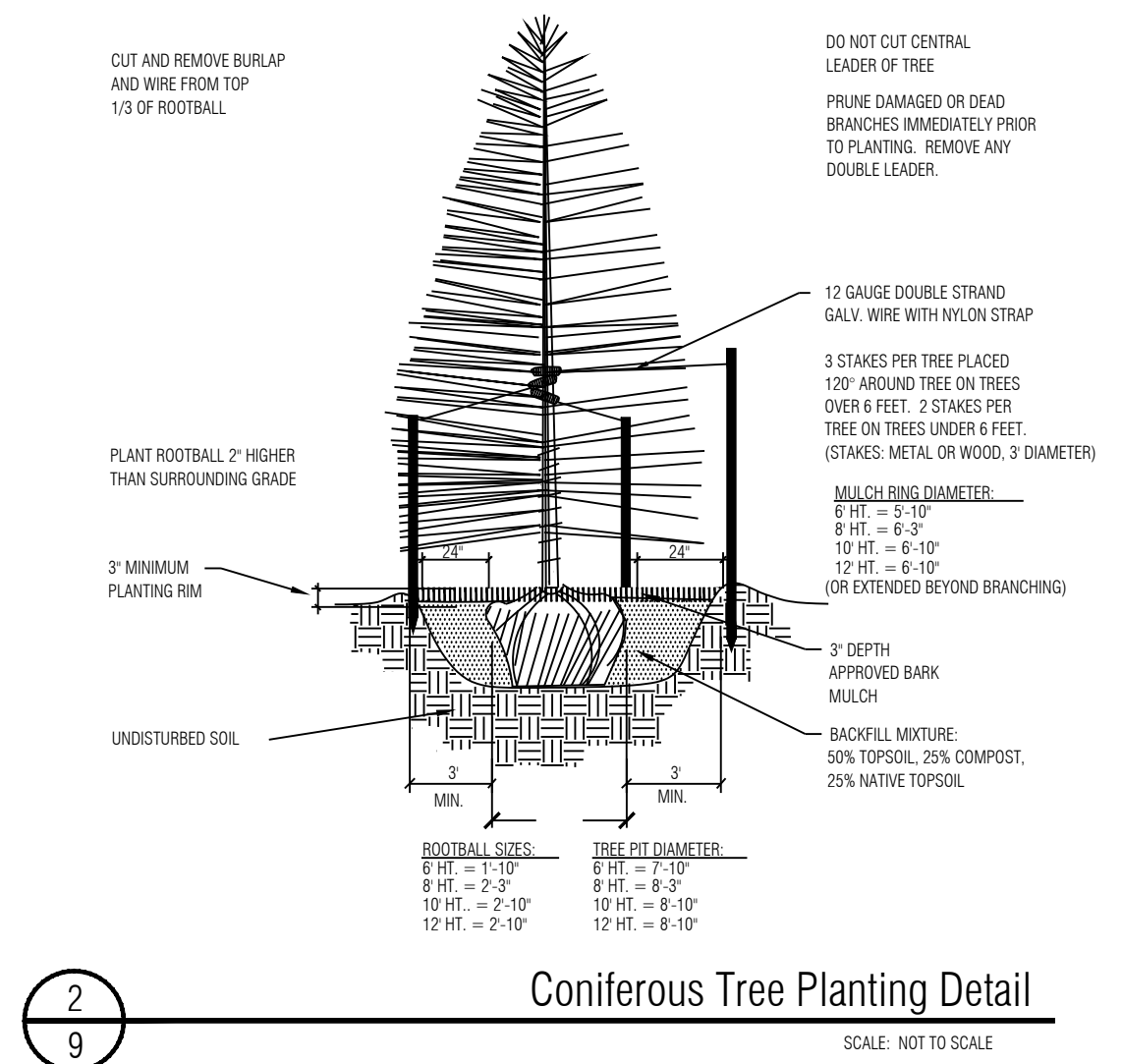
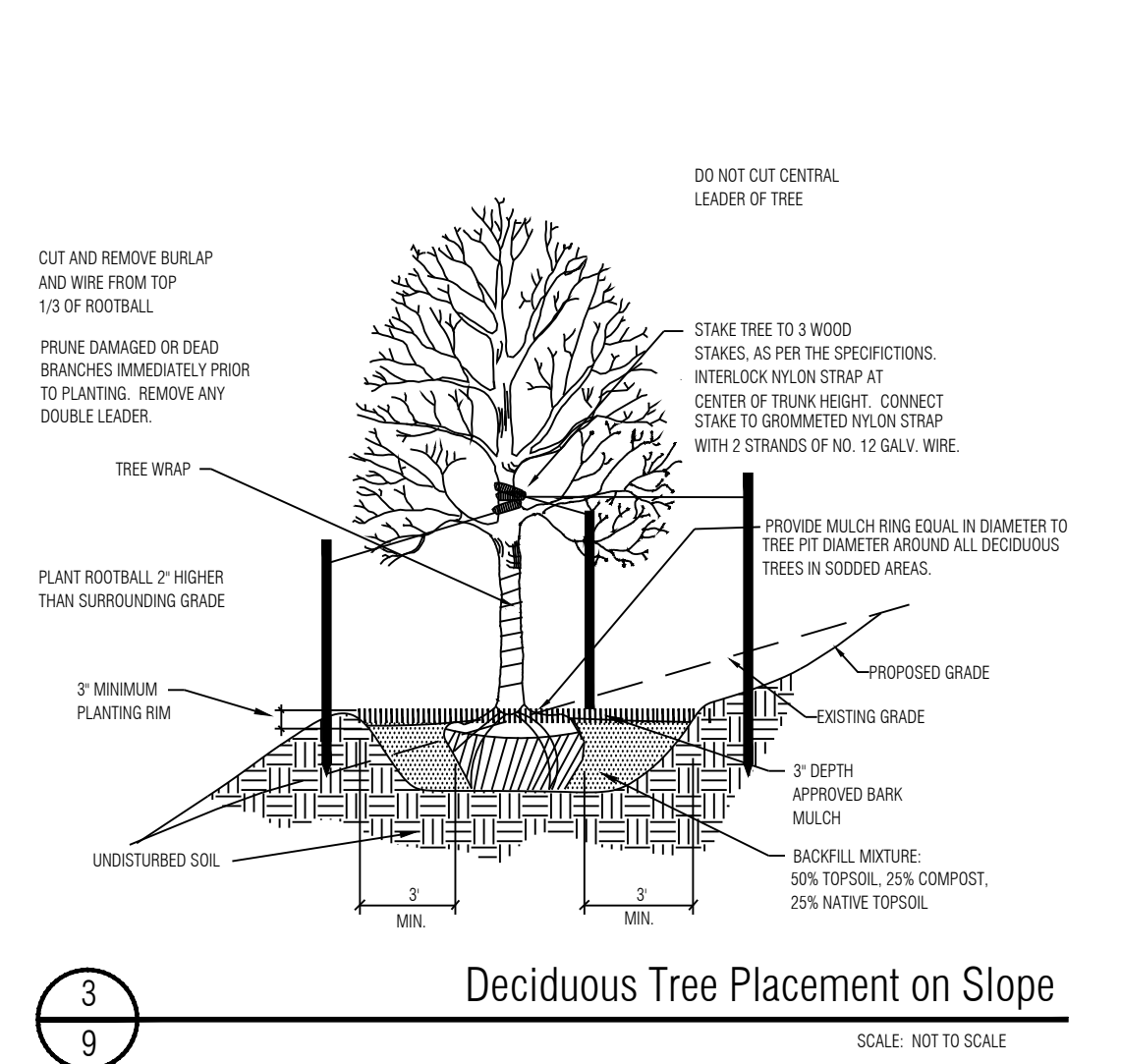


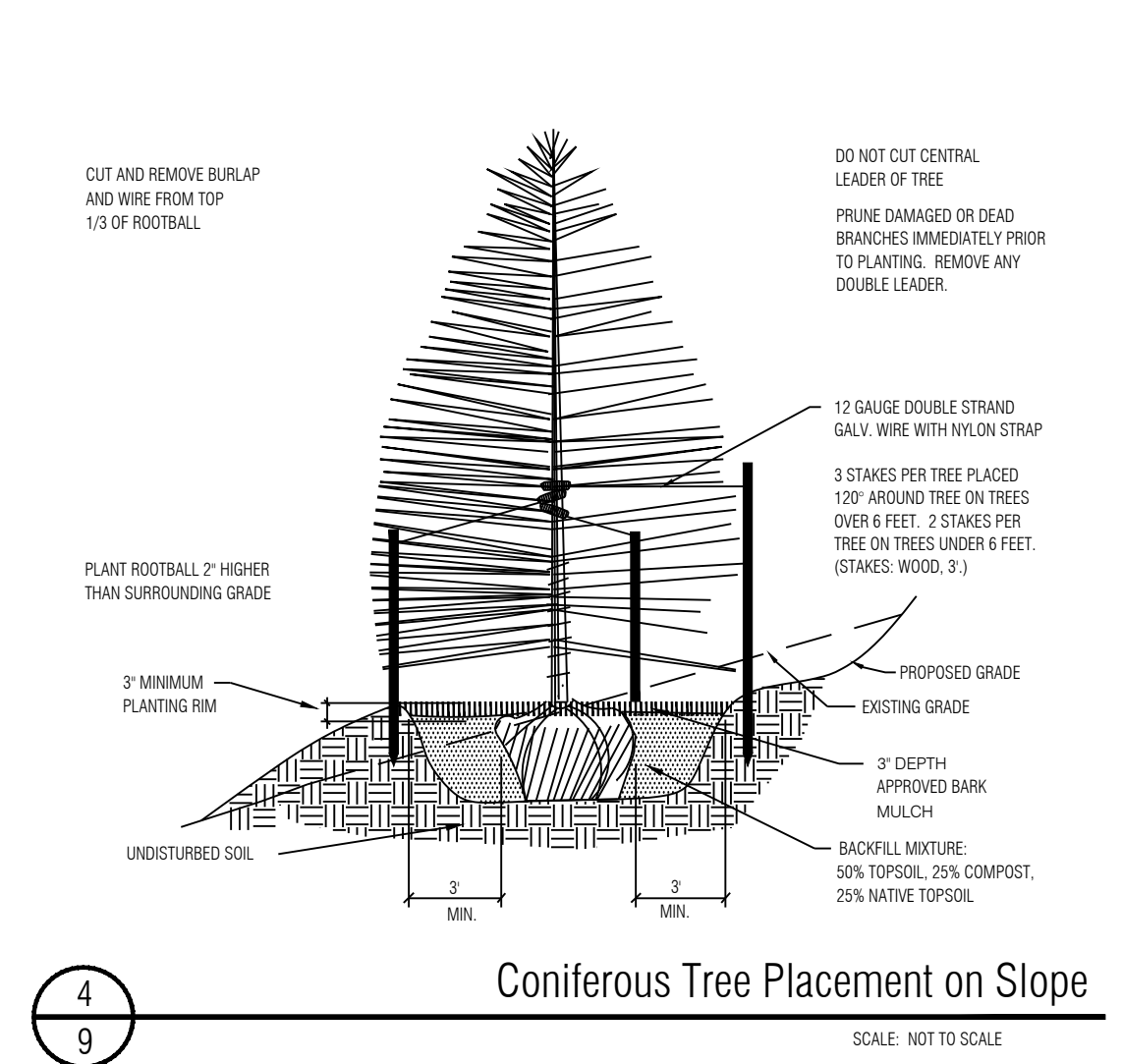
**1** Deciduous Tree Planting Detail  
SCALE: NOT TO SCALE



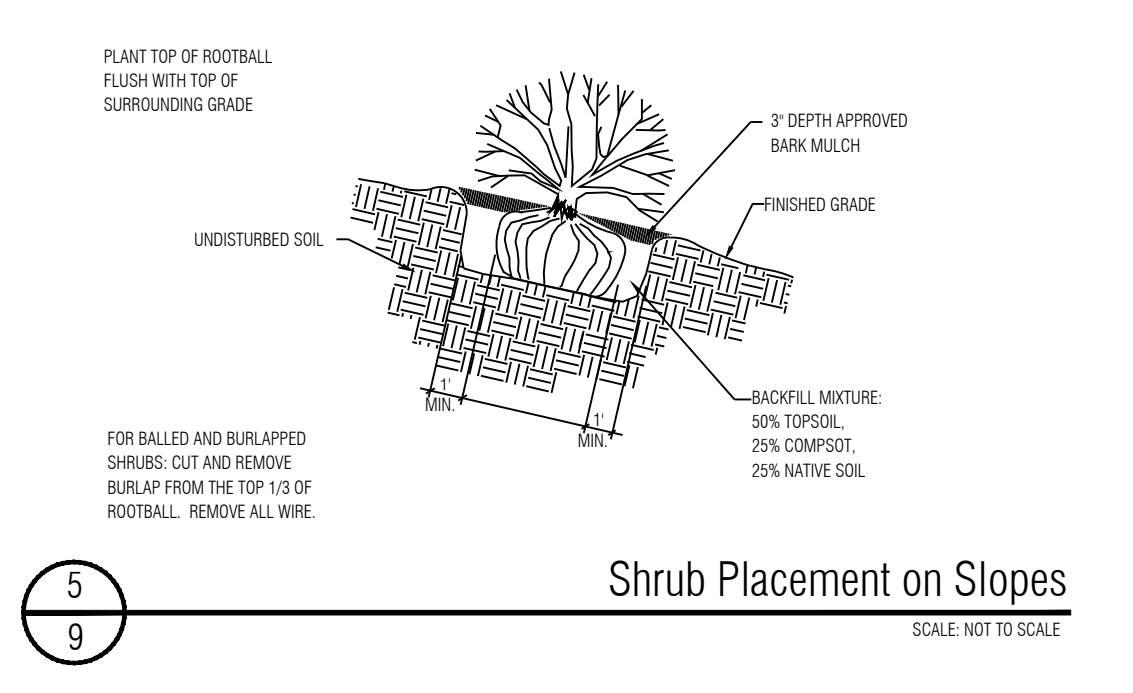
**2** Coniferous Tree Planting Detail  
SCALE: NOT TO SCALE



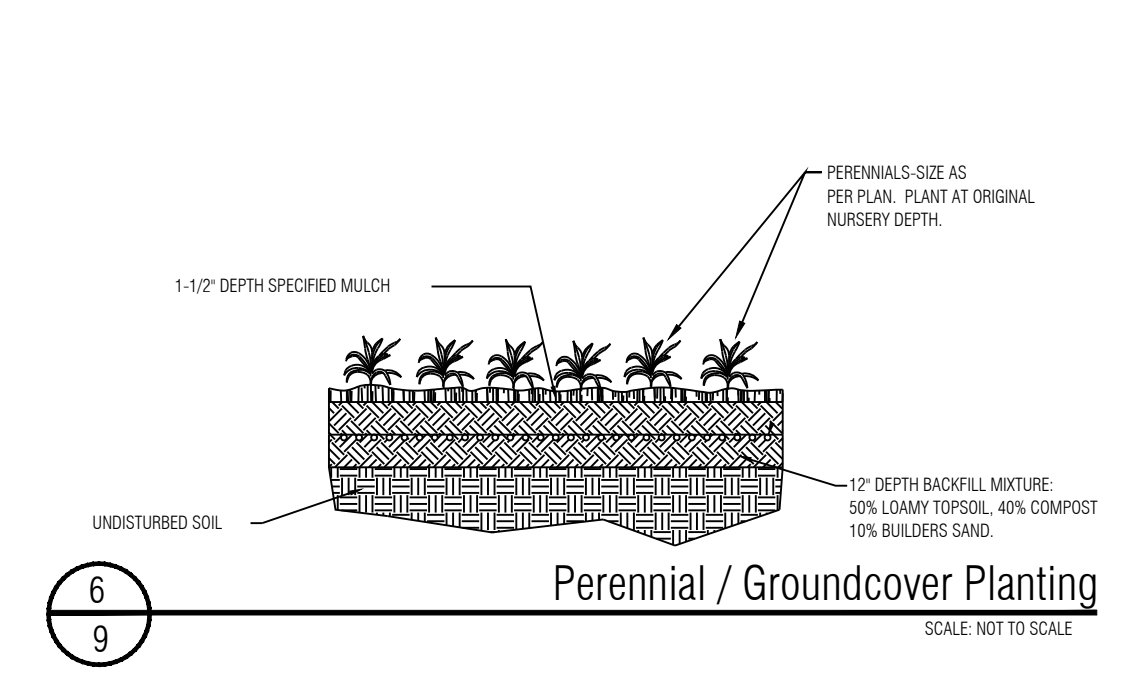
**3** Deciduous Tree Placement on Slope  
SCALE: NOT TO SCALE



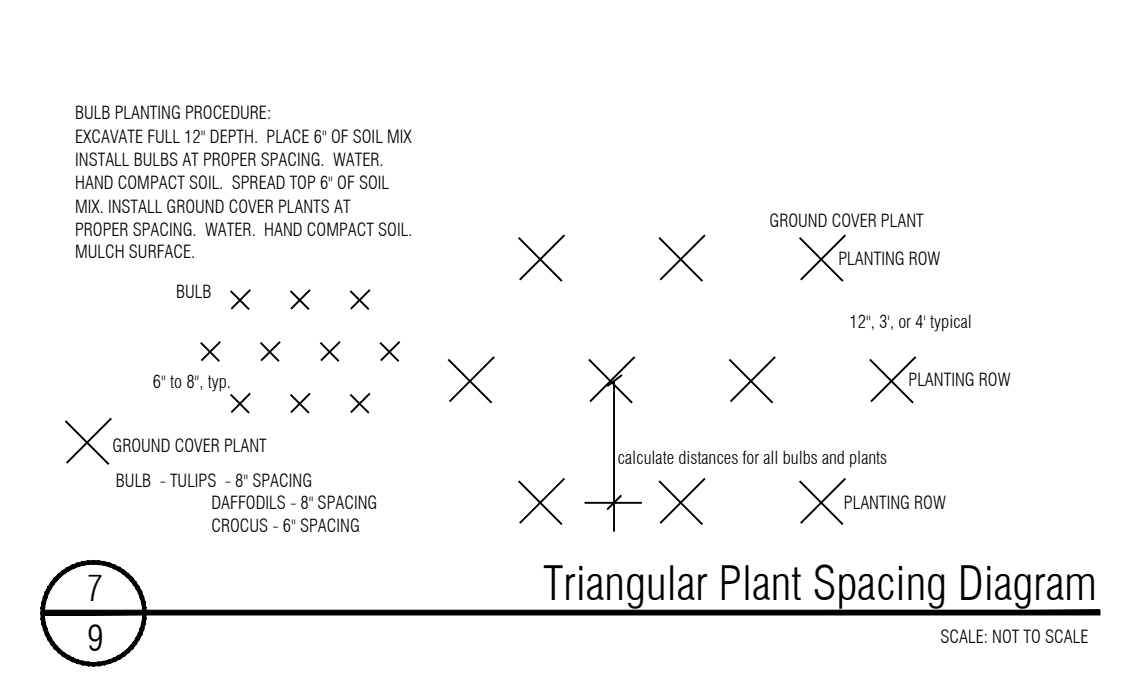
**4** Coniferous Tree Placement on Slope  
SCALE: NOT TO SCALE



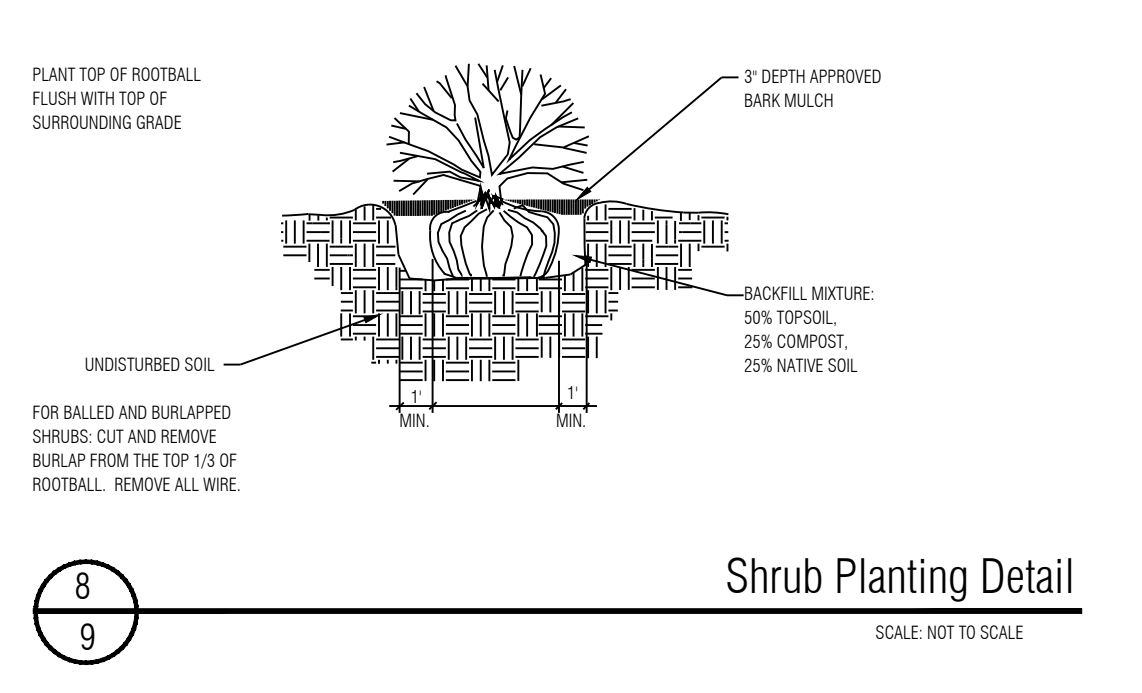
**5** Shrub Placement on Slopes  
SCALE: NOT TO SCALE



**6** Perennial / Groundcover Planting  
SCALE: NOT TO SCALE



**7** Triangular Plant Spacing Diagram  
SCALE: NOT TO SCALE



**8** Shrub Planting Detail  
SCALE: NOT TO SCALE

**Seed Mix B with Wildflowers**

30% Ephraim Crested Wheatgrass Note: Low Gro Mix available from Arkansas Valley Seed Solutions (877) 957-3337  
25% Dwarf Perennial Ryegrass  
15% SR3200 Blue Fescue  
10% Chewings Fescue  
15% Blue Grama  
Wildflowers: 615 Western Mix

APPLICATION RATE: Native Grass Mix: 40 lbs./acre (or as recommended by supplier)  
Wildflower Mix: 6 oz./1,000 s.f. or 8-10 lbs./acre  
Hydromulch: 2200 lbs./acre mulch, 100 lbs./acre tackifier.

APPLICATION METHOD: Broadcast seed by hand or with a drop spreader. Manually rake seed into prepared soil. After seeding apply green hydromulch and tackifier.

**Seed Mix A**

15% Western Wheatgrass  
15% Big Bluestem  
15% Thickspike Wheatgrass  
10% Sideoats Grama  
15% Little Bluestem  
15% Blue Grama  
15% Annual Rye

APPLICATION RATE: Native Grass Mix: 3 lbs./1,000s.f. or 130 lbs./acre  
Hydromulch: 2200 lbs./acre mulch, 100 lbs./acre tackifier

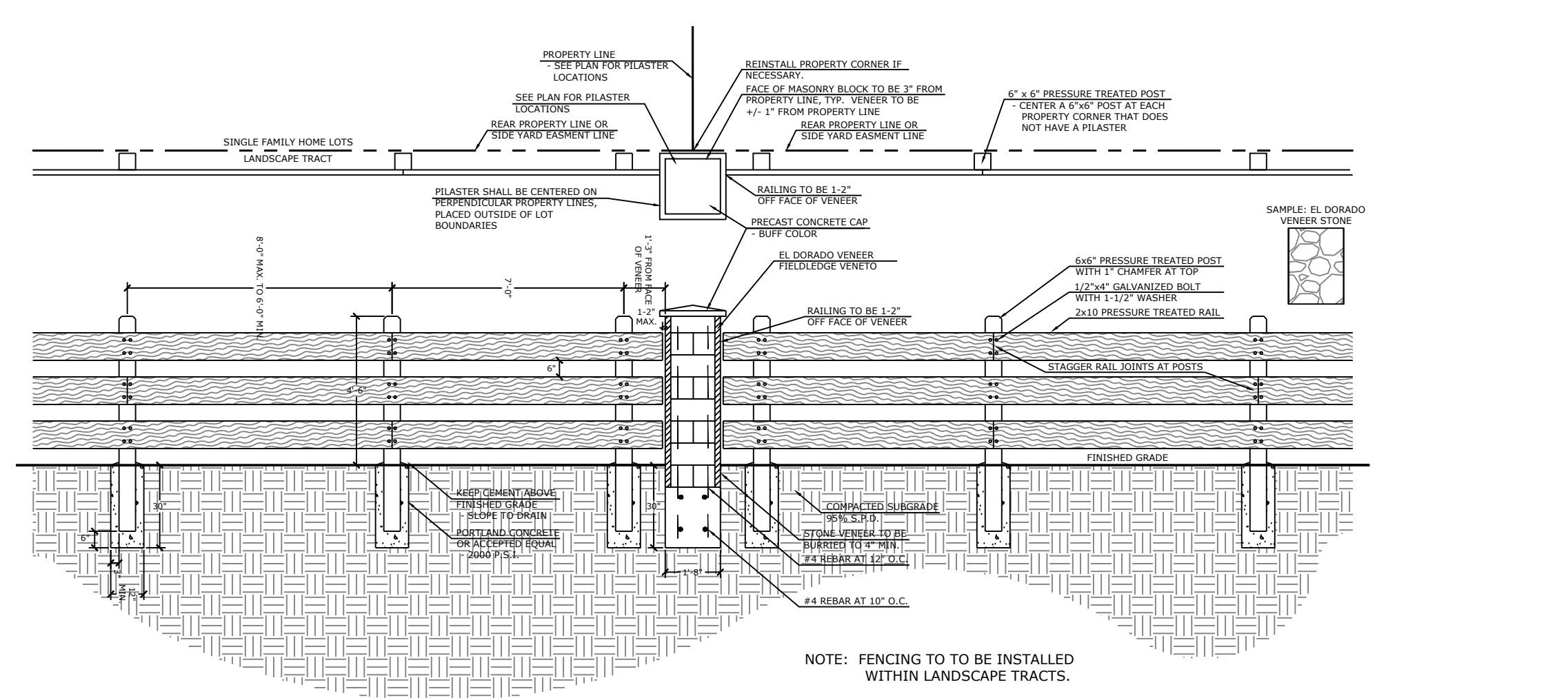
APPLICATION METHOD: Broadcast seed by hand or with a drop spreader. Manually rake seed into prepared soil. After seeding apply green hydromulch and tackifier.

**Seed Mix C**

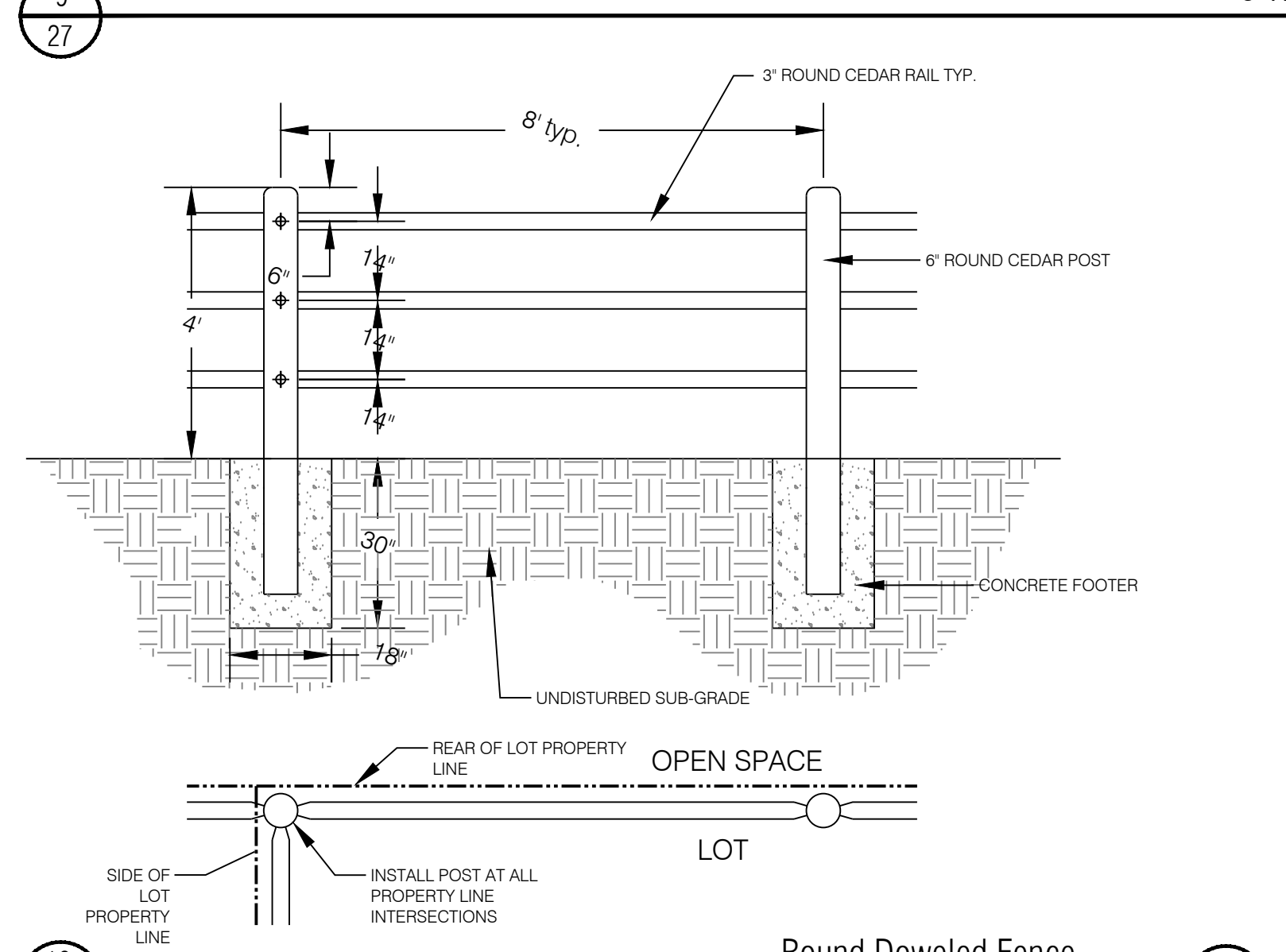
45% Reed Canarygrass  
25% Improved Meadow Brome  
25% Garrison Creeping Foxtail (Coated)  
5% Climax, Timothy

APPLICATION RATE: Native Grass Mix: 10 lbs./acre (or as recommended by supplier)  
Hydromulch: 2200 lbs./acre mulch, 100 lbs./acre tackifier

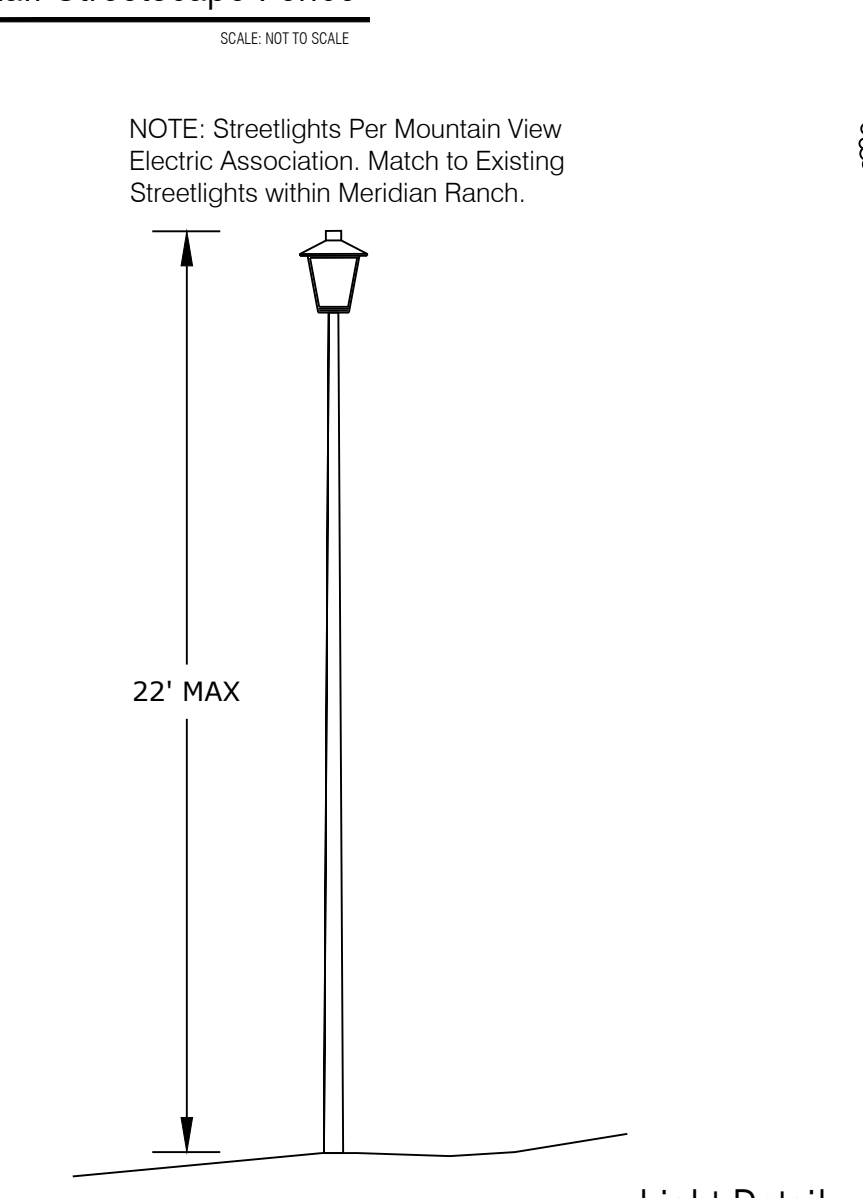
APPLICATION METHOD: Broadcast seed by hand or with a drop spreader. Manually rake seed into prepared soil. After seeding apply green hydromulch and tackifier.



**9** 3-Rail Streetscape Fence  
SCALE: NOT TO SCALE



**10** Round Doweled Fence  
SCALE: NOT TO SCALE



**11** Light Detail  
SCALE: NOT TO SCALE

**PLANT SCHEDULE**

TREES	CODE	QTY	BOTANICAL / COMMON NAME	HEIGHT	WIDTH	SIZE	COND
(+)	Aru	10	Acer rubrum / Red Maple	50'	40'	3" Cal.	B&B
(+)	Axf	48	Acer x freemanii 'Jeffersred' / Autumn Blaze Maple	20'	30'	3" Cal.	B&B
(+)	Gtr	21	Gleditsia triacanthos / Honey Locust	60'	40'	3" Cal.	B&B
(+)	Mr	10	Malus x 'Radiant' / Radiant Crab Apple	25'	20'	2.5" Cal.	B&B
(+)	Mxr	4	Malus x 'Red Jewel' / Crab Apple	15'	10'	2" Cal.	B&B
(+)	Mxs	18	Malus x 'Sargentii' / Sargent Crabapple	10'	10'	2" Cal.	B&B
(+)	Ms	18	Malus x 'Spring Snow' / Spring Snow Crab Apple	25'	25'	2.5" Cal.	B&B
(+)	Ppu	13	Picea pungens / Colorado Blue Spruce	60'	30'	8' HT	B&B
(+)	Ph	31	Picea pungens 'Hoopsii' / Hoopsii Blue Spruce	15'	25'	6' HT	B&B
(+)	Ped	41	Pinus edulis / Pinon Pine	30'	20'	6' HT	B&B
(+)	Ppo	13	Pinus ponderosa / Ponderosa Pine	80'	40'	8' HT	B&B
(+)	Qm	5	Quercus macrocarpa / Burr Oak	40'	50'	3" Cal.	B&B
(+)	Tam	2	Tilia americana / American Linden	80'	50'	3" Cal.	B&B
SHRUBS	CODE	QTY	BOTANICAL / COMMON NAME	HEIGHT	WIDTH	SIZE	COND
(+)	Eac	26	Euonymus alatus 'Compactus' / Compact Burning Bush	3'	4'	5 GAL	CONT
(+)	Jbc	92	Juniperus horizontalis 'Blue Chip' / Blue Chip Juniper	1'	8'	5 GAL	CONT
(+)	Pfg	15	Potentilla fruticosa 'Gold Drop' / Gold Drop Potentilla	3'	4'	5 GAL	CONT
(+)	Rag	28	Rhus aromatica 'Gro-Low' / Gro-Low Fragrant Sumac	3'	4'	5 GAL	CONT
GRASSES	CODE	QTY	BOTANICAL / COMMON NAME	HEIGHT	WIDTH	SIZE	COND
(+)	Cbr	47	Calamagrostis brachytricha / Reed Grass	4'	3'	1 GAL	CONT
(+)	Hse	52	Helictotrichon sempervirens / Blue Oat/Blue Avena	3'	2'	1 GAL	CONT
(+)	Ssc	18	Schizachyrium scoparium / Little Bluestem Grass	4'	2.5'	1 GAL	CONT
PERENNIALS	CODE	QTY	BOTANICAL / COMMON NAME	HEIGHT	WIDTH	SIZE	COND
(+)	Hso	88	Hemerocallis x 'Stella de Oro' / Stella de Oro Daylily	1.5'	1.5'	1 GAL	CONT
(+)	Lh	54	Lavandula angustifolia 'Hidcote' / Hidcote Lavender	2'	2'	1 GAL	CONT

**TREE REQUIREMENTS**

Plant Category	Street (Classification)	Street Frontage Length	Required Trees	Provided Trees	Required Shrubs	Provided Shrubs
(RR)	Rex Road	1167'	47 (1 per 25')	44	30	30
(LR)	Lambert Road (Collector)	611'	25 (1 per 25')	23	20	27
(SR)	Sunrise Ridge Drive (Local)	425'	15 (1 per 30')	15	--	--
(RP)	Rolling Peaks Drive (Local)	584'	20 (1 per 30')	18	20	20

**LANDSCAPE NOTES**

- CONTRACTOR TO UTILIZE STOCKPILED TOPSOIL FROM GRADING OPERATION AS AVAILABLE, OR IMPORT AS REQUIRED AND TILL INTO TOP 6" OF SOIL.
- FOR GRADES REFER TO CIVIL ENGINEERS DRAWINGS.
- ALL TREES TO RECEIVE A BACK FILL MIXTURE OF 50% IMPORTED LOAMY TOPSOIL, 25% PEAT MOSS, AND 25% EXISTING SOIL.
- A FULLY AUTOMATED SPRINKLER IRRIGATION SYSTEM WILL DRIP IRRIGATE ALL TREES.
- ALL TREES TO BE STAKED WITH WOOD STAKES. FOR 3" CAL. DECIDUOUS TREES AND EVERGREEN TREES OVER 6' USE 3 WOOD STAKES (STAKE TO GRADE LEVEL).
- CONTRIM INSPECTIONS WILL INCLUDE SELECTION OF SPECIMEN PLANT MATERIALS AT CONTRACTOR'S NURSERY OR WHOLESALER, APPROVAL OF PLANT LOCATION STAKES BEFORE PLANT MATERIALS ARE INSTALLED, 'PUNCH LIST' SITE INSPECTION, AND FINAL INSPECTION SITE VISITS.
  - PRE-CONSTRUCTION MEETING/SELECTION OF PLANT MATERIALS AT THE NURSERY AND REVIEW OF SPECIFIED LANDSCAPE/IRRIGATION SUBMITTALS.
  - IRRIGATION MAINLINE INSPECTION - PRESSURE TEST AND REVIEW OF MODEL IRRIGATION.
  - IRRIGATION 95%/ PUNCH INSPECTION.
  - IRRIGATION FINAL ACCEPTANCE INSPECTION.
  - LANDSCAPE 50% INSPECTION - 1/2 THROUGH ENTIRE PROJECT
  - LANDSCAPE 95% INSPECTION/ PUNCH INSPECTION.
  - LANDSCAPE FINAL ACCEPTANCE INSPECTION AND COUNTY LANDSCAPE AND IRRIGATION AFFIDAVITS.
- PLANTS SHALL BE WARRANTED FOR THE DURATION OF TWO FULL YEARS AFTER THE INSTALLATION (WARRANTY SHALL COVER 100% OF THE REPLACEMENT COST).
- ALL PLANTS TO RECEIVE 3 INCH DEPTH OF SHREDDED CEDAR WOOD MULCH UNLESS OTHERWISE SPECIFIED. MULCH RINGS TO BE 15" DIA. FOR 5 GALLON SHRUBS AND 36" DIA. FOR TREES NOT PLANTED IN BEDS, WITH THE EXCEPTION OF BLUEGRASS SOD AREAS IN WHICH TREES SHALL RECEIVE 60" DIA. MULCH RING. AVAILABLE FROM C&C SAND CEDAR MULCH (719)471-7222.
- CONTRACTOR IS RESPONSIBLE FOR INSTALLING ALL PLANT MATERIAL SHOWN ON THIS PLAN. IF ANY DISCREPANCIES ARE FOUND BETWEEN THE LANDSCAPE PLAN AND THE PLANT SCHEDULE, THE QUANTITIES SHOWN ON THE LANDSCAPE PLAN SUPERSEDE THOSE SHOWN ON THE PLANT SCHEDULE.
- CONTACT THE LANDSCAPE ARCHITECT FOR ANY DISCREPANCIES WITH THE DRAWINGS OR VARIATIONS IN THE FIELD.
- CALL FOR UTILITY LOCATIONS PRIOR TO ANY PLANT INSTALLATION.
- LANDSCAPING IN THE SIGHT TRIANGLES SHALL NOT EXCEED 18" IN HEIGHT.
- FENCING DETAILS ARE TYPICAL AND MAY BE SUBJECT TO MINOR VARIATIONS IN MATERIALS. ANY VARIATION SHALL BE AUTHORIZED BY THE DEVELOPMENT SERVICES DIRECTOR, AFTER REVIEW OF ALTERNATE PLANS, DETAILS, OR OTHER DOCUMENTATION IN SUPPORT OF THE VARIATION.
- SOD SHALL BE KENTUCKY BLUEGRASS BLEND. SOD SHALL BE LAID ON A FIRM BED WITH TIGHT JOINTS WITH NO VOIDS BETWEEN STRIPS. ANY MOUNDS OR DEPRESSIONS OCCURRING AFTER INSTALLATION SHALL BE CORRECTED PRIOR TO ACCEPTANCE. SOD TO BE FERTILIZED ACCORDING TO GROWERS RECOMMENDATIONS. SUBMIT PRODUCT INFORMATION TO L.A. FOR APPROVAL PRIOR TO INSTALLATION.
- ALL SOD/TURF, ROCK, & SHRUB BEDS TO BE SEPARATED BY SOLID STEEL EDGING. ALL SHRUB BEDS TO BE ENCLOSED BY STEEL EDGING. SEPARATION BETWEEN SOD AND NATIVE SEED, AND BETWEEN ALTERNATIVE TURF AND NATIVE SEED SHALL BE A MOWED STRIP, WITHOUT STEEL EDGING.

P:\GTL\Meridian Ranch\Drawings\Planning\3-ail Streetscape\10-21-2019 11:19:43 AM biten

Land Planning  
Landscape  
Architecture  
Urban Design

**NES**

N.E.S. Inc.  
619 N. Cascade Ave., Ste. 200  
Colorado Springs, CO 80903

Tel. 719.471.0073  
Fax 719.471.0267

www.nescolorado.com

© 2012. All Rights Reserved.

**Rolling Hills Ranch Filings 1-3 At Meridian Ranch**

PUD Development Plan / Preliminary Plan

DATE: October 19, 2019  
PROJECT MGR: J. Romero  
PREPARED BY: K. Marshall

**ENTITLEMENT**

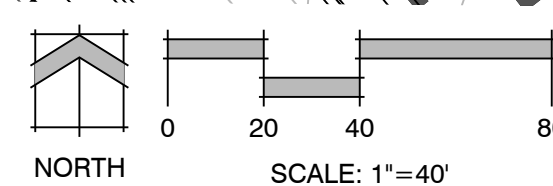
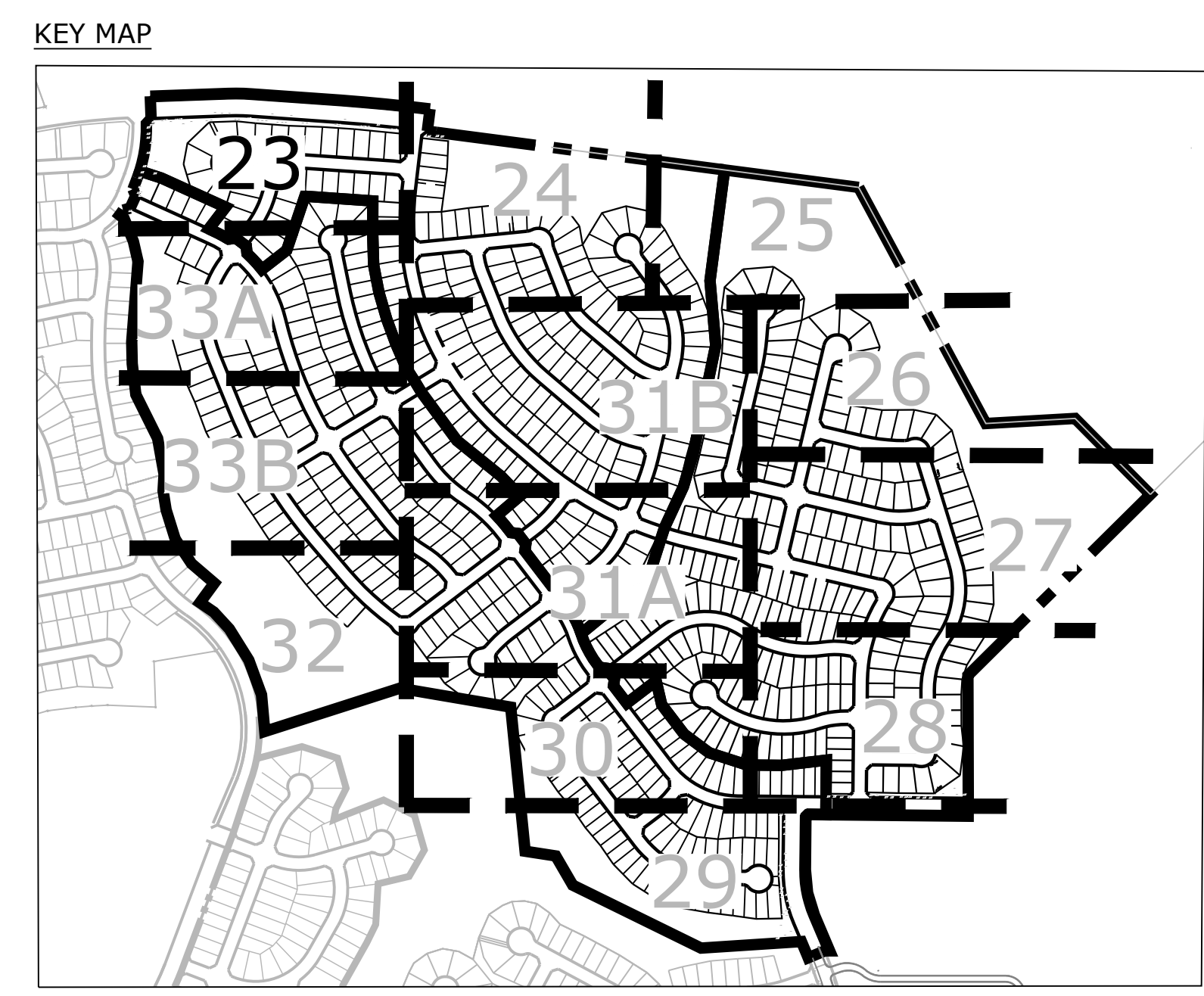
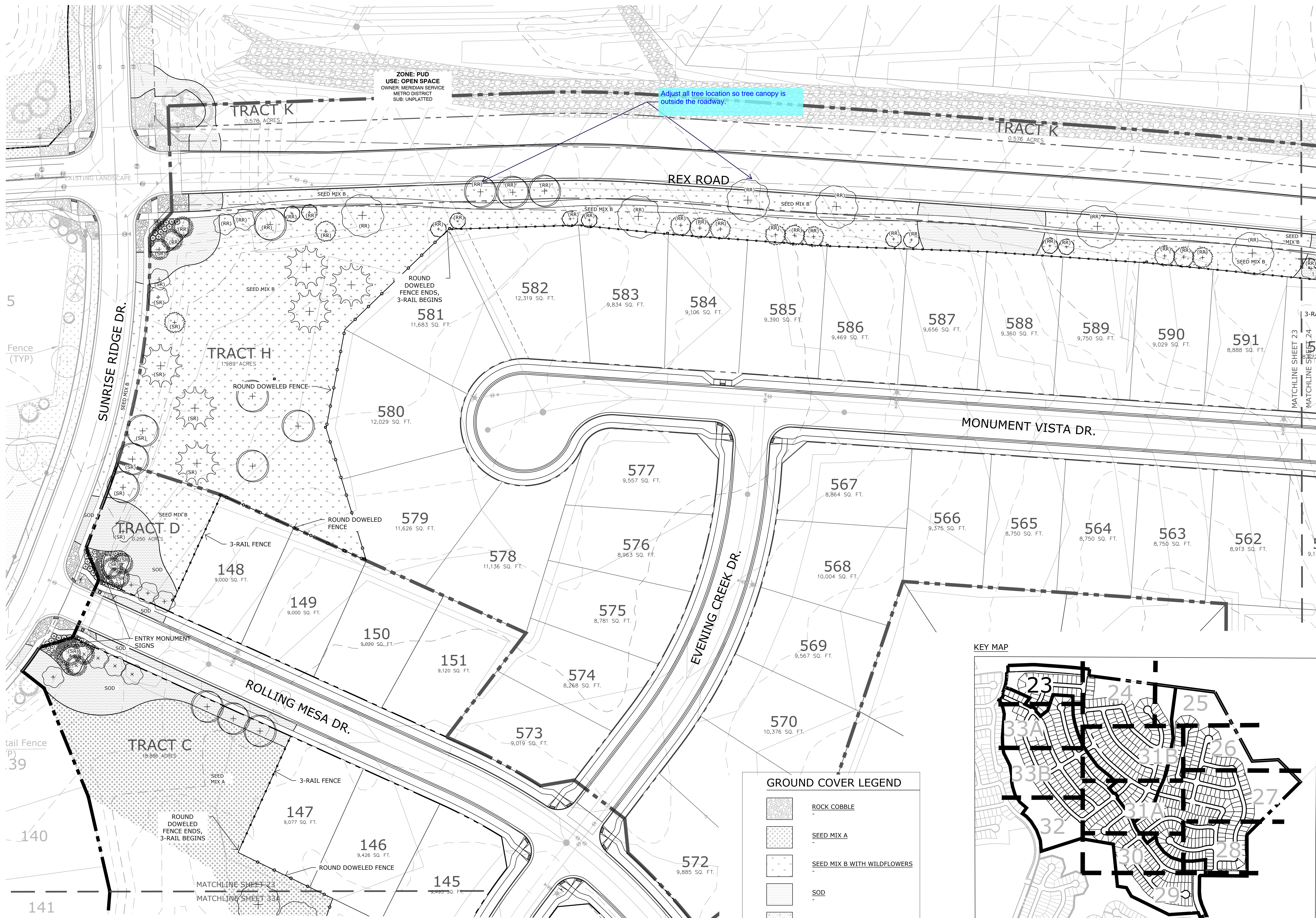
DATE	BY	DESCRIPTION

**LANDSCAPE DETAILS**

**22**  
OF 34

PCD# PUDSP-\_\_\_\_\_





PLANNING / LANDSCAPE ARCHITECT  
 IN ASSOCIATION WITH  
 SEAL  
 ISSUE INFO  
 SHEET NUMBER

**Rolling Hills  
Ranch Filings 1-3  
At Meridian  
Ranch**

PUD Development Plan /  
Preliminary Plan

DATE: October 19, 2019  
PROJECT MGR: J. Romero  
PREPARED BY: K. Marshall

**ENTITLEMENT**

DATE	BY	DESCRIPTION

**LANDSCAPE PLAN**

**23**  
OF 34

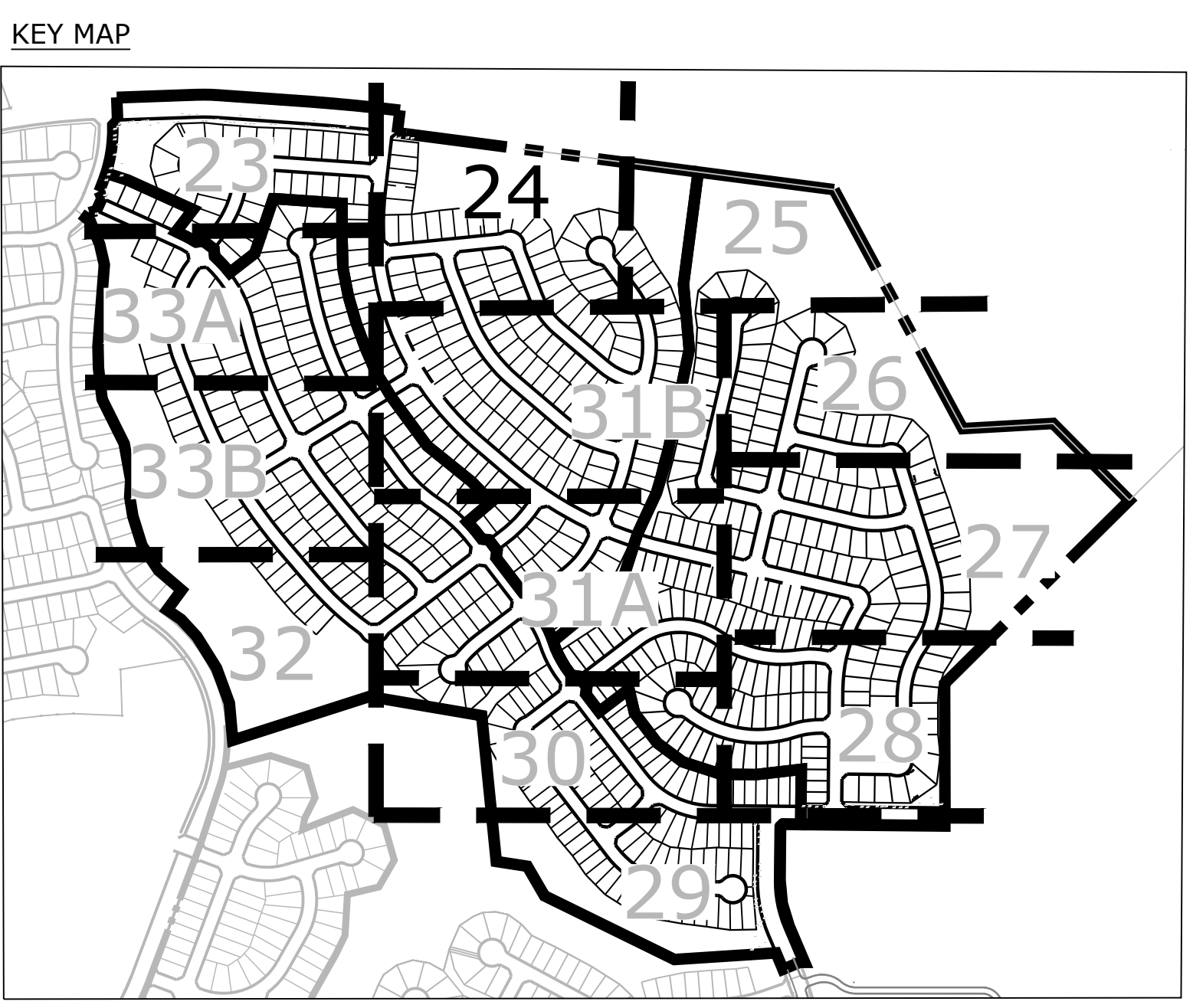
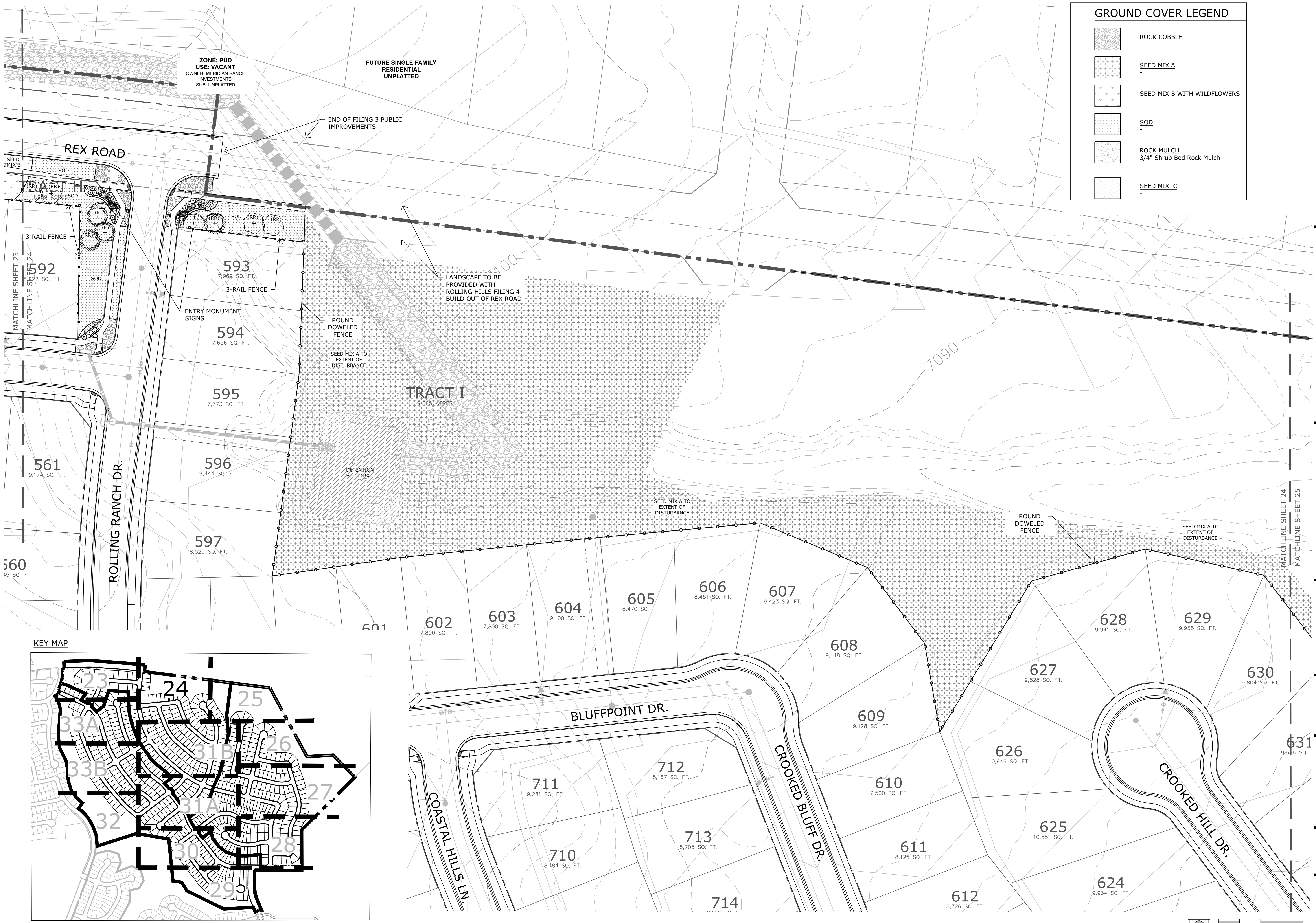
PCD# PUDSP-\_\_\_\_\_

P:\GTL\Meridian Ranch\Drawings\Planning\Rolling Hills\Drawings\Planning\Final\Land/PUD-FILP\_RollingHills.dwg [Plan (23)] 10/21/2019 11:20:13 AM biten



**GROUND COVER LEGEND**

	ROCK COBBLE
	SEED MIX A
	SEED MIX B WITH WILDFLOWERS
	SOD
	ROCK MULCH 3/4" Shrub Bed Rock Mulch
	SEED MIX C



**Rolling Hills Ranch Filings 1-3 At Meridian Ranch**

PUD Development Plan / Preliminary Plan

DATE: October 19, 2019  
PROJECT MGR: J. Romero  
PREPARED BY: K. Marshall

**ENTITLEMENT**

DATE	BY	DESCRIPTION

**LANDSCAPE PLAN**

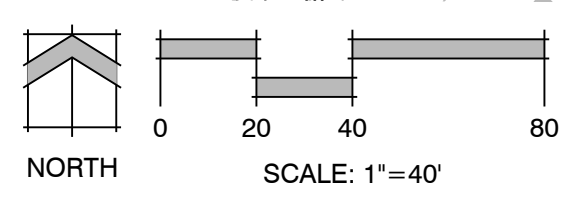
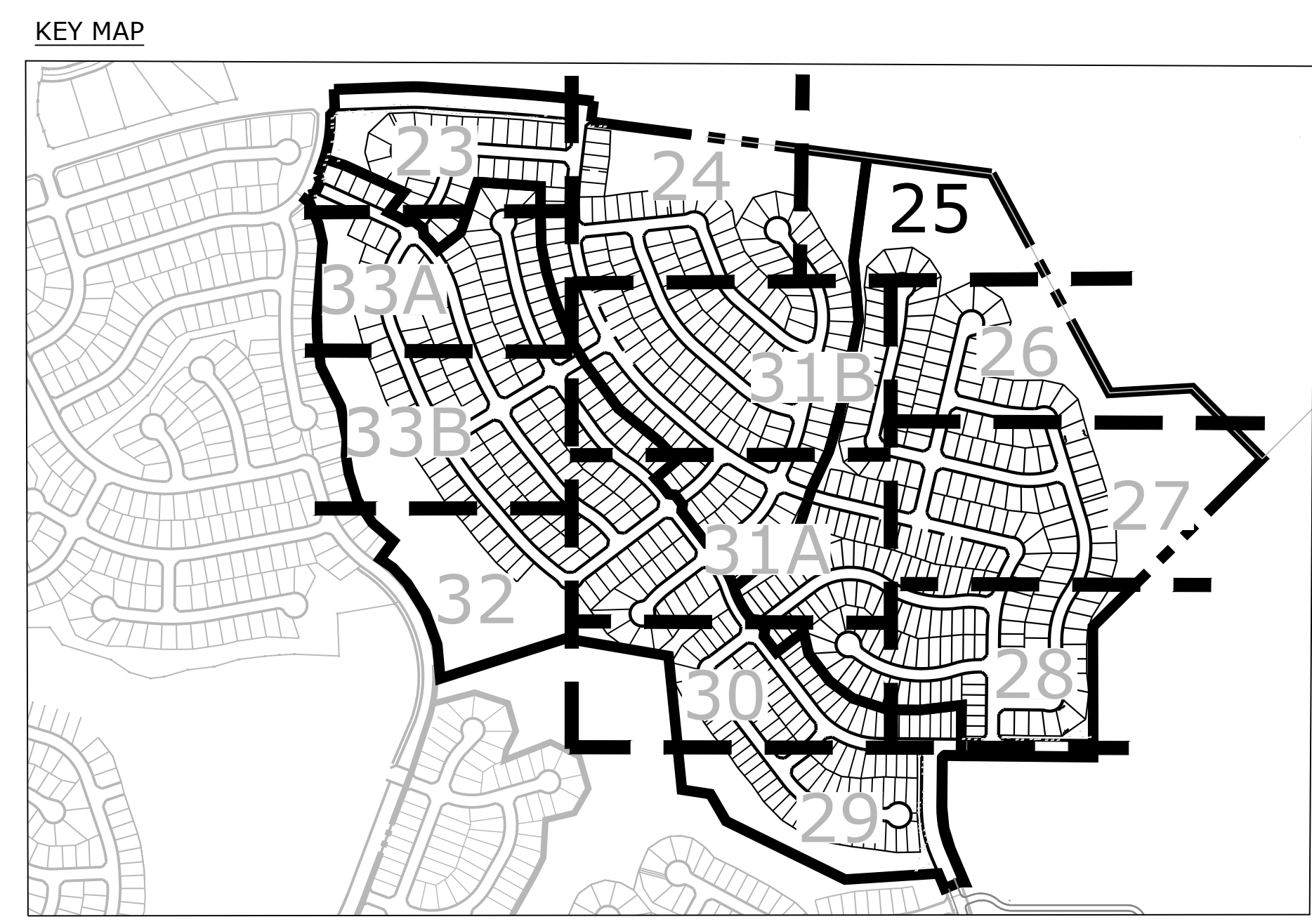
**24**  
OF 34

PCD# PUDSP-\_\_\_\_\_

P:\GTL\Meridian Ranch\Drawings\Planning\Rolling Hills\Drawings\Planning\Final\Land\PUD-FILP\_RollingHills.dwg [Plan (24)] 10/21/2019 11:20:44 AM biten



GROUND COVER LEGEND	
	ROCK COBBLE
	SEED MIX A
	SEED MIX B WITH WILDFLOWERS
	SOD
	ROCK MULCH 3/4" Shrub Bed Rock Mulch



P:\GTL\Meridian Ranch\Drawings\Planning\Rolling Hills\Drawings\Planning\Final\Land/PUD-PUD\_RollingHills.dwg [Plan (25)] 10/21/2019 11:21:14 AM biten

**Rolling Hills  
Ranch Filings 1-3  
At Meridian  
Ranch**

PUD Development Plan /  
Preliminary Plan

DATE: October 19, 2019  
PROJECT MGR: J. Romero  
PREPARED BY: K. Marshall

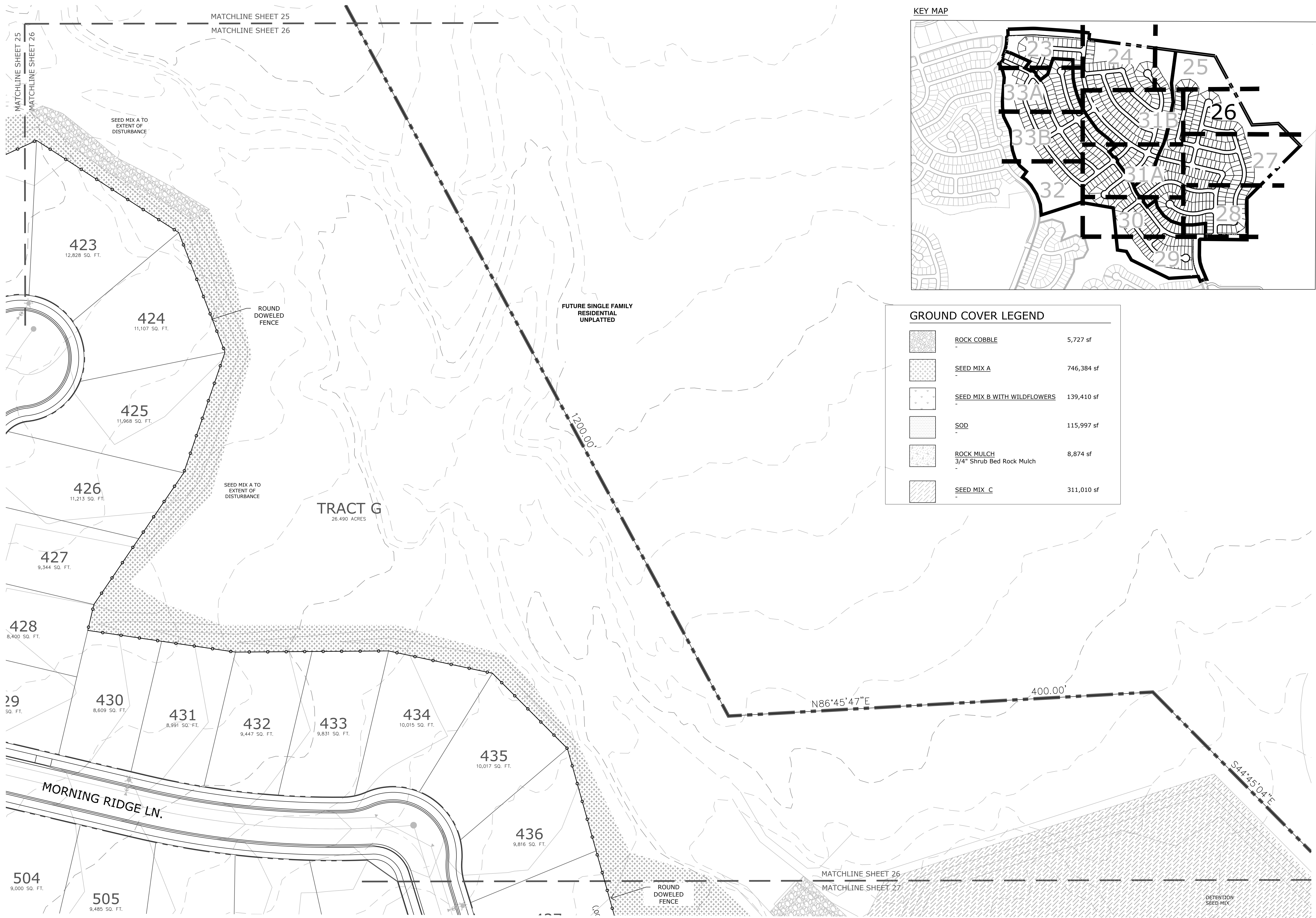
**ENTITLEMENT**

DATE	BY	DESCRIPTION

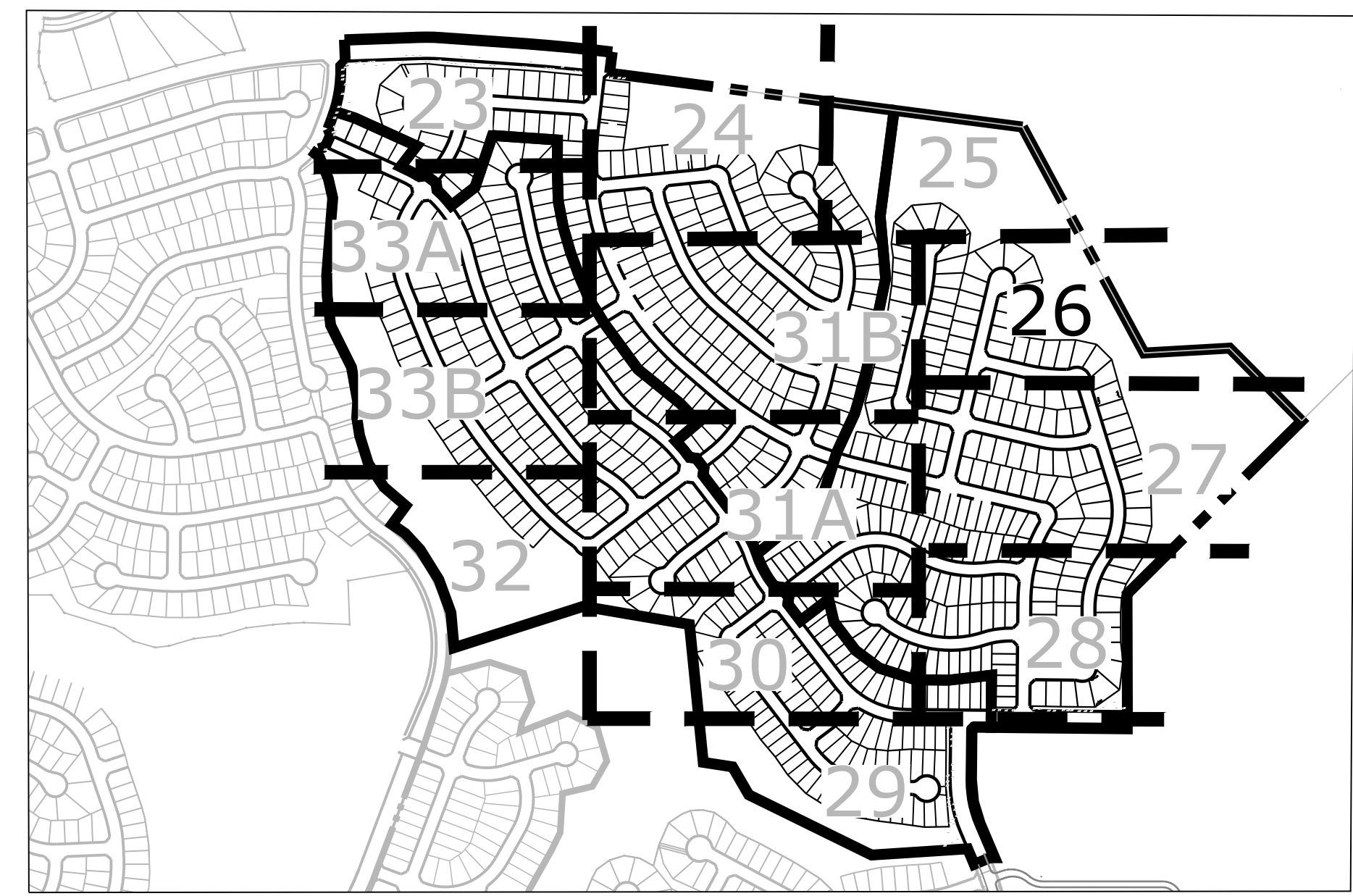
**LANDSCAPE PLAN**

**25**  
OF 34

PCD# PUDSP-\_\_\_\_\_



KEY MAP



GROUND COVER LEGEND

	ROCK COBBLE	5,727 sf
	SEED MIX A	746,384 sf
	SEED MIX B WITH WILDFLOWERS	139,410 sf
	SOD	115,997 sf
	ROCK MULCH 3/4" Shrub Bed Rock Mulch	8,874 sf
	SEED MIX C	311,010 sf

Land Planning  
Landscape Architecture  
Urban Design

N.E.S. Inc.  
619 N. Cascade Ave., Ste. 200  
Colorado Springs, CO 80903  
Tel. 719.471.0073  
Fax 719.471.0267  
www.nescolorado.com  
© 2012. All Rights Reserved.

Rolling Hills  
Ranch Filings 1-3  
At Meridian  
Ranch

PUD Development Plan /  
Preliminary Plan

DATE: October 19, 2019  
PROJECT MGR: J. Romero  
PREPARED BY: K. Marshall

ENTITLEMENT

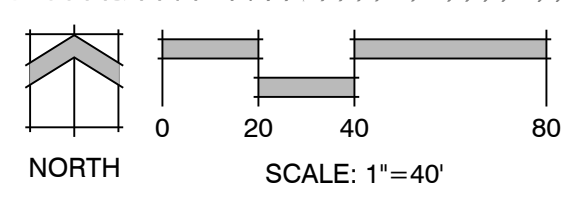
DATE:	BY:	DESCRIPTION:

LANDSCAPE PLAN

26  
OF 34

PCD# PUDSP-\_\_\_\_\_

P:\GTL\Meridian Ranch\Drawings\Planning\Rolling Hills\Drawings\Planning\Final\Land\PUD-PLP\_RollingHills.dwg [Plan (26)] 10/21/2019 11:21:45 AM biten

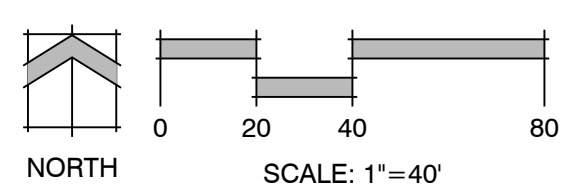
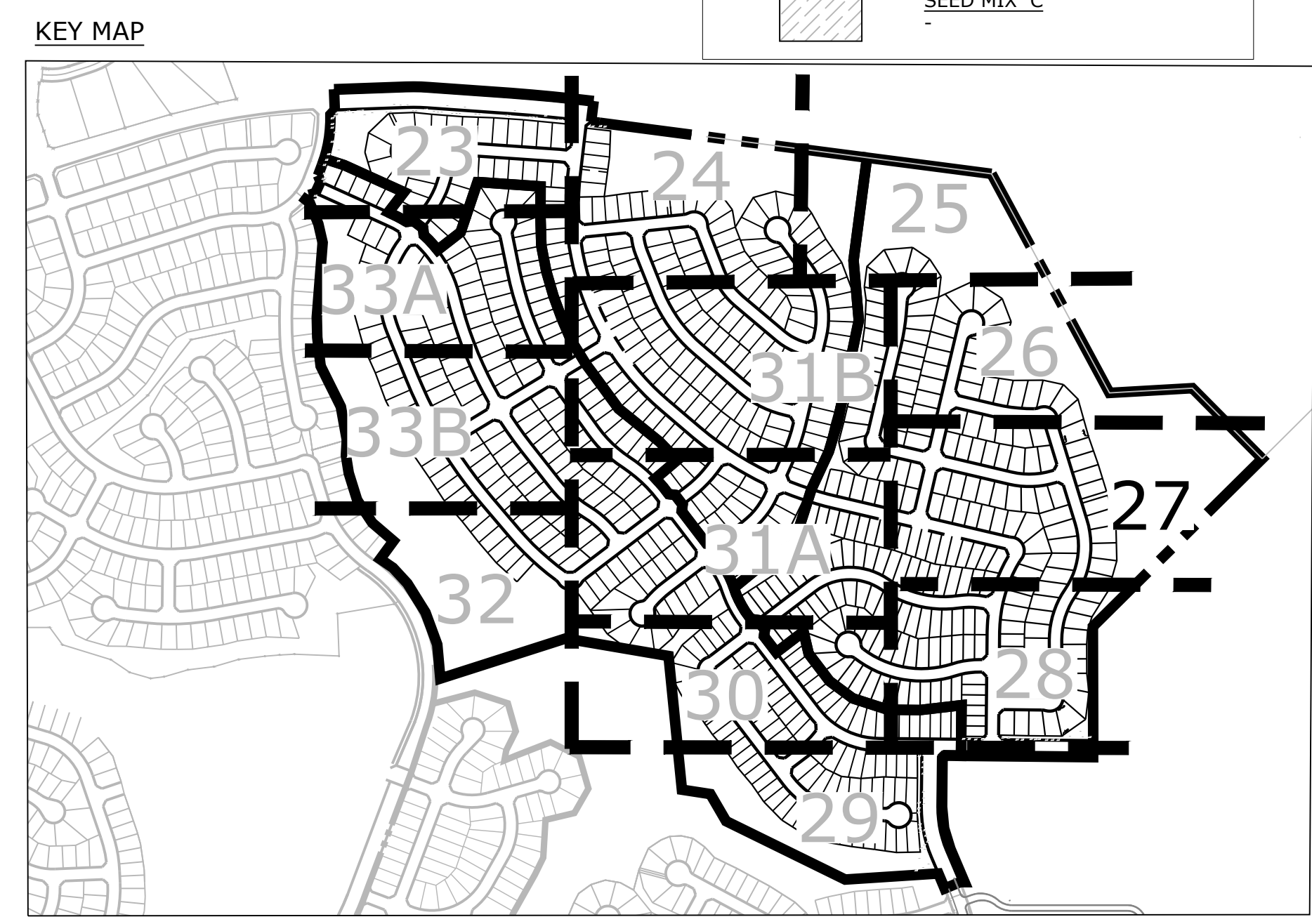






**GROUND COVER LEGEND**

	ROCK COBBLE
	SEED MIX A
	SEED MIX B WITH WILDFLOWERS
	SOD
	ROCK MULCH 3/4" Shrub Bed Rock Mulch
	SEED MIX C



P:\GTL\Meridian Ranch\Drawings\Planning\Rolling Hills\Drawings\Planning\Final\Land/PUD-FILP\_RollingHills.dwg [Plan (27)] 10/21/2019 11:22:14 AM biten

Land Planning  
Landscape Architecture  
Urban Design

N.E.S. Inc.  
619 N. Cascade Ave., Ste. 200  
Colorado Springs, CO 80903

Tel. 719.471.0073  
Fax 719.471.0267

www.nescolorado.com

© 2012. All Rights Reserved.

**Rolling Hills  
Ranch Filings 1-3  
At Meridian  
Ranch**

PUD Development Plan /  
Preliminary Plan

DATE: October 19, 2019  
PROJECT MGR: J. Romero  
PREPARED BY: K. Marshall

**ENTITLEMENT**

DATE:	BY:	DESCRIPTION:

**LANDSCAPE PLAN**

**27**  
OF 34

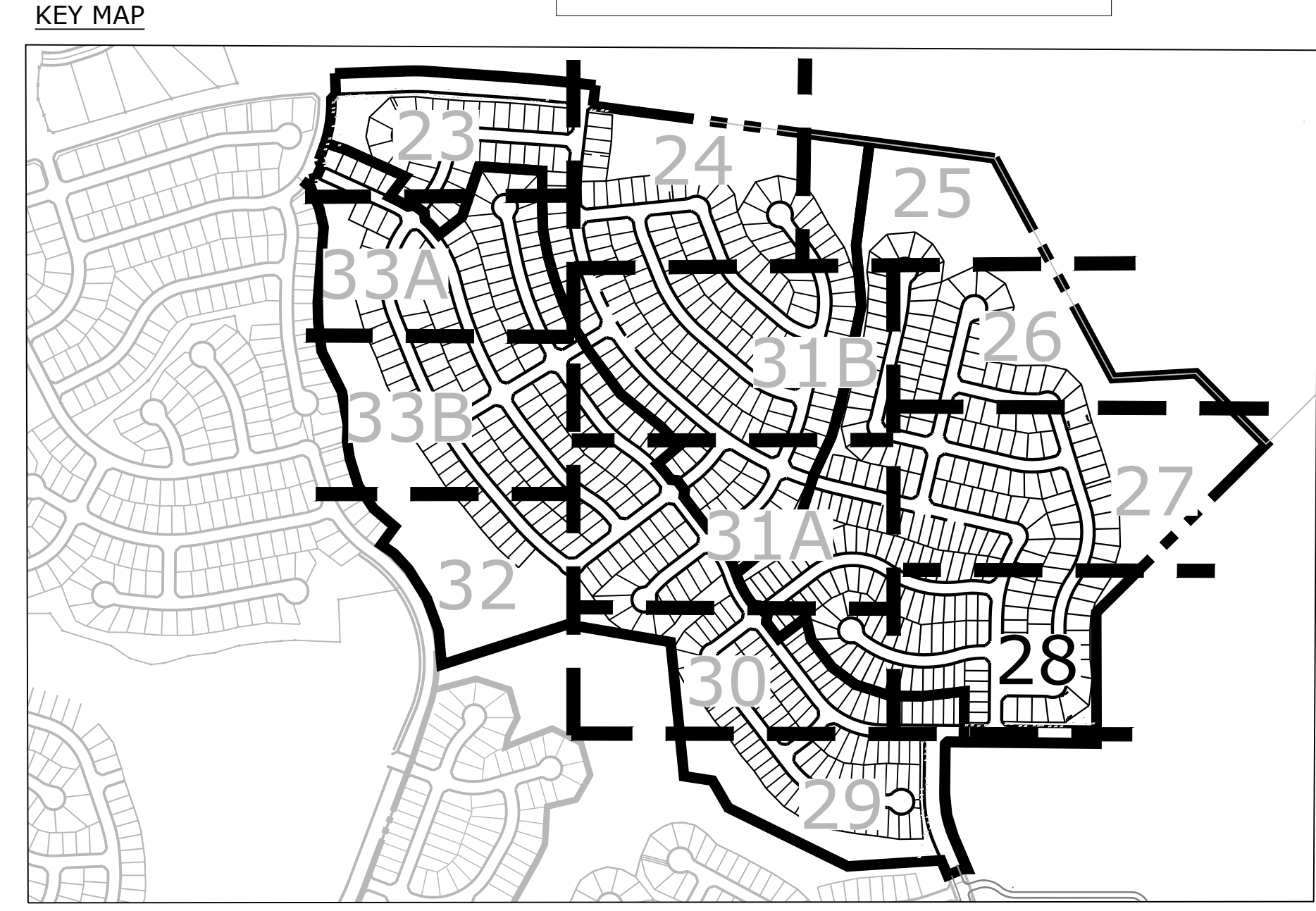
PCD# PUDSP-\_\_\_\_\_





**GROUND COVER LEGEND**

	ROCK COBBLE
	SEED MIX A
	SEED MIX B WITH WILDFLOWERS
	SOD
	ROCK MULCH 3/4" Shrub Bed Rock Mulch



**Rolling Hills Ranch Filings 1-3 At Meridian Ranch**

PUD Development Plan / Preliminary Plan

DATE: October 19, 2019  
PROJECT MGR: J. Romero  
PREPARED BY: K. Marshall

**ENTITLEMENT**

DATE:	BY:	DESCRIPTION:

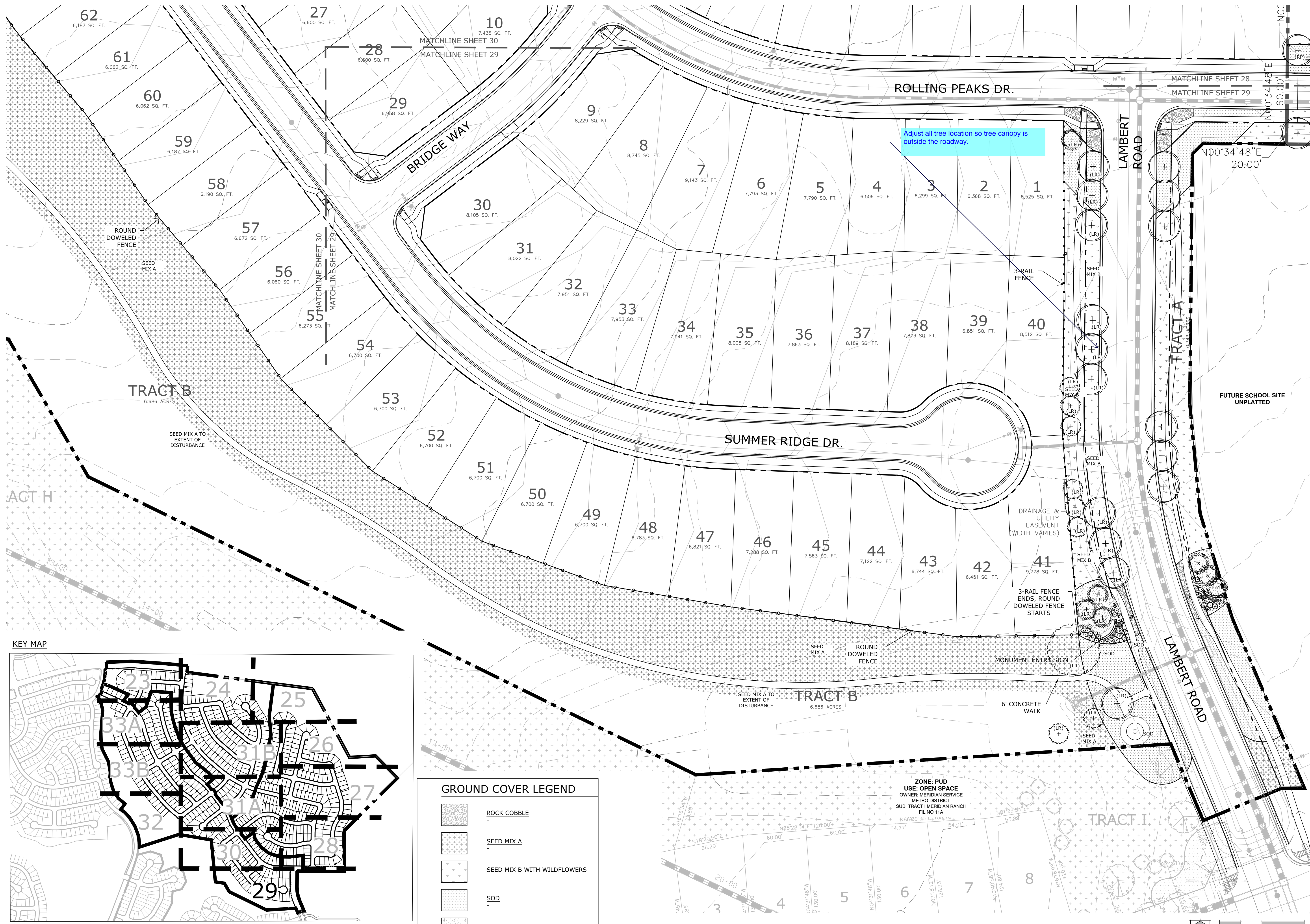
**LANDSCAPE PLAN**

**28**  
OF 34

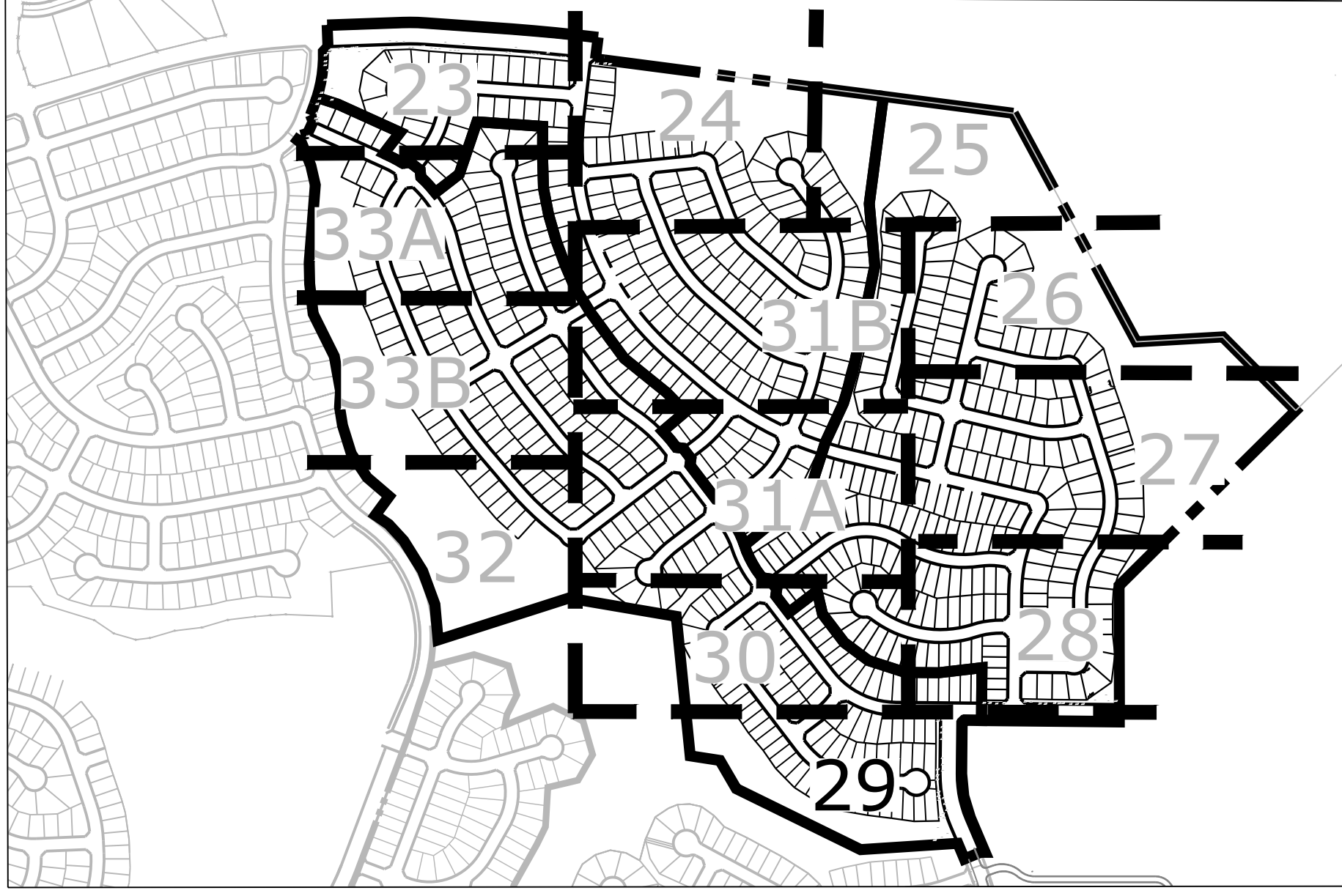
PCD# PUDSP-\_\_\_\_\_

P:\GTL\Meridian Ranch\Drawings\Planning\Rolling Hills\Drawings\Planning\Final\Site\Plan\28\_PUD\_Preliminary.dwg [Plan (28)] 10/21/2019 11:22:44 AM biten





KEY MAP



GROUND COVER LEGEND	
	ROCK COBBLE
	SEED MIX A
	SEED MIX B WITH WILDFLOWERS
	SOD
	ROCK MULCH 3/4" Shrub Bed Rock Mulch

Rolling Hills  
Ranch Filings 1-3  
At Meridian  
Ranch

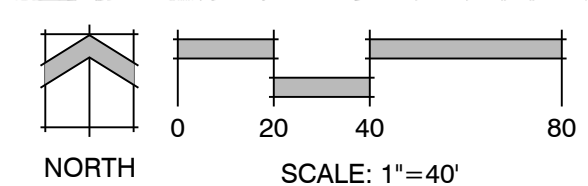
PUD Development Plan / Preliminary Plan

DATE: October 19, 2019  
PROJECT MGR: J. Romero  
PREPARED BY: K. Marshall

ENTITLEMENT

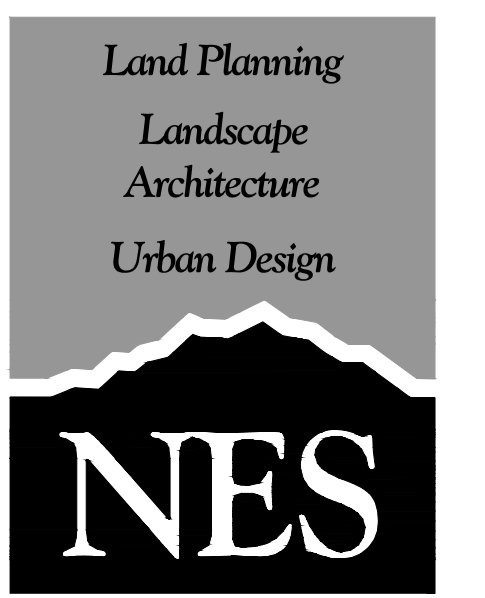
DATE: BY: DESCRIPTION:

LANDSCAPE PLAN



P:\GTL\Meridian Ranch\Drawings\Planning\Rolling Hills\Drawings\Planning\Hills\Drawings\Plan\Hill-PUD\_RollingHills.dwg [Plan (29)] 10/21/2019 11:23:14 AM bitan



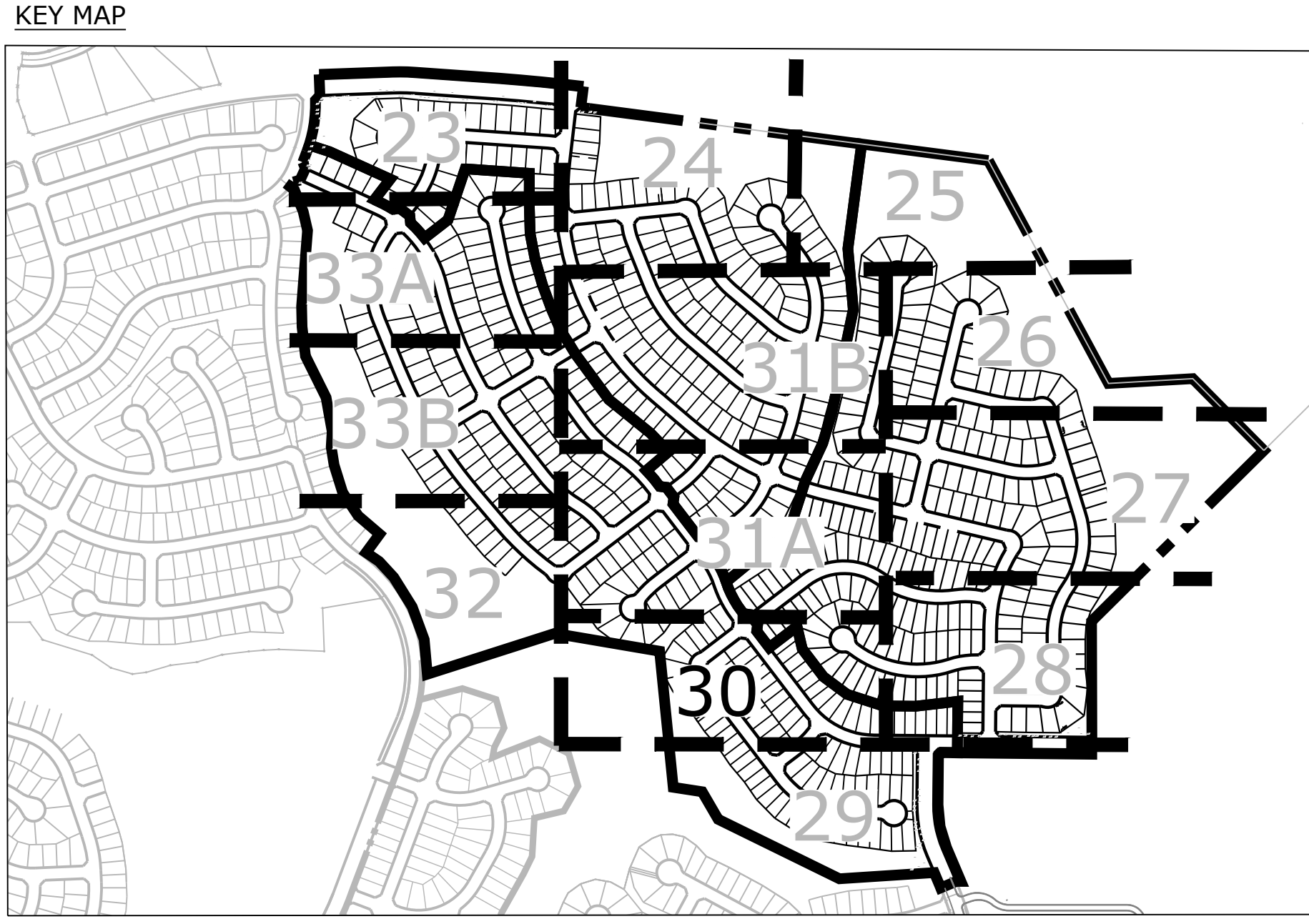


N.E.S. Inc.  
 619 N. Cascade Ave., Ste. 200  
 Colorado Springs, CO 80903  
 Tel. 719.471.0073  
 Fax 719.471.0267  
 www.nescolorado.com  
 © 2012. All Rights Reserved.



**GROUND COVER LEGEND**

- ROCK COBBLE
- SEED MIX A
- SEED MIX B WITH WILDFLOWERS
- SOD
- ROCK MULCH 3/4" Shrub Bed Rock Mulch



PROJECT: LANDSCAPE ARCHITECT  
 IN ASSOCIATION WITH  
 SEAL  
 ISSUE INFO  
 SHEET NUMBER

**Rolling Hills Ranch Filings 1-3 At Meridian Ranch**

PUD Development Plan / Preliminary Plan

DATE: October 19, 2019  
 PROJECT MGR: J. Romero  
 PREPARED BY: K. Marshall

**ENTITLEMENT**

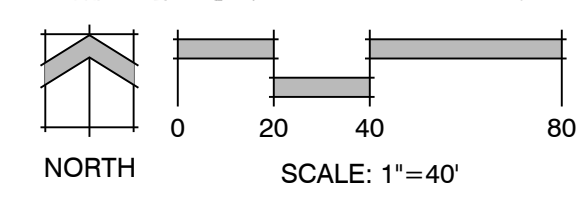
DATE	BY	DESCRIPTION

**LANDSCAPE PLAN**

**30**  
 OF 34

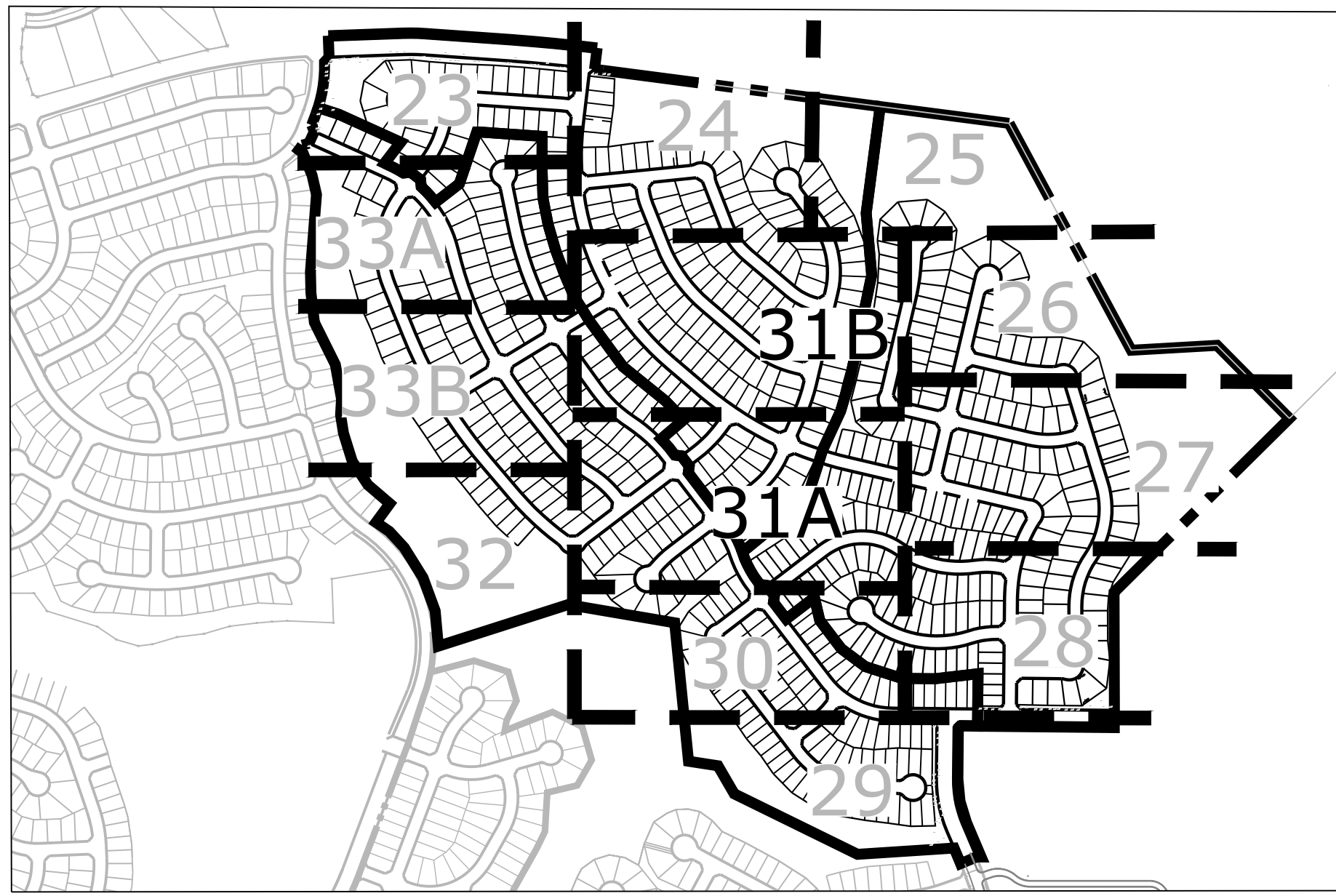
PCD# PUDSP-\_\_\_\_\_

P:\GTL\Meridian Ranch\Drawings\Planning\Rolling Hills\Drawings\Planning\Final\Land\PUD-FIL-Rolling Hills.dwg [Plan (30)] 10/21/2019 11:23:44 AM biten



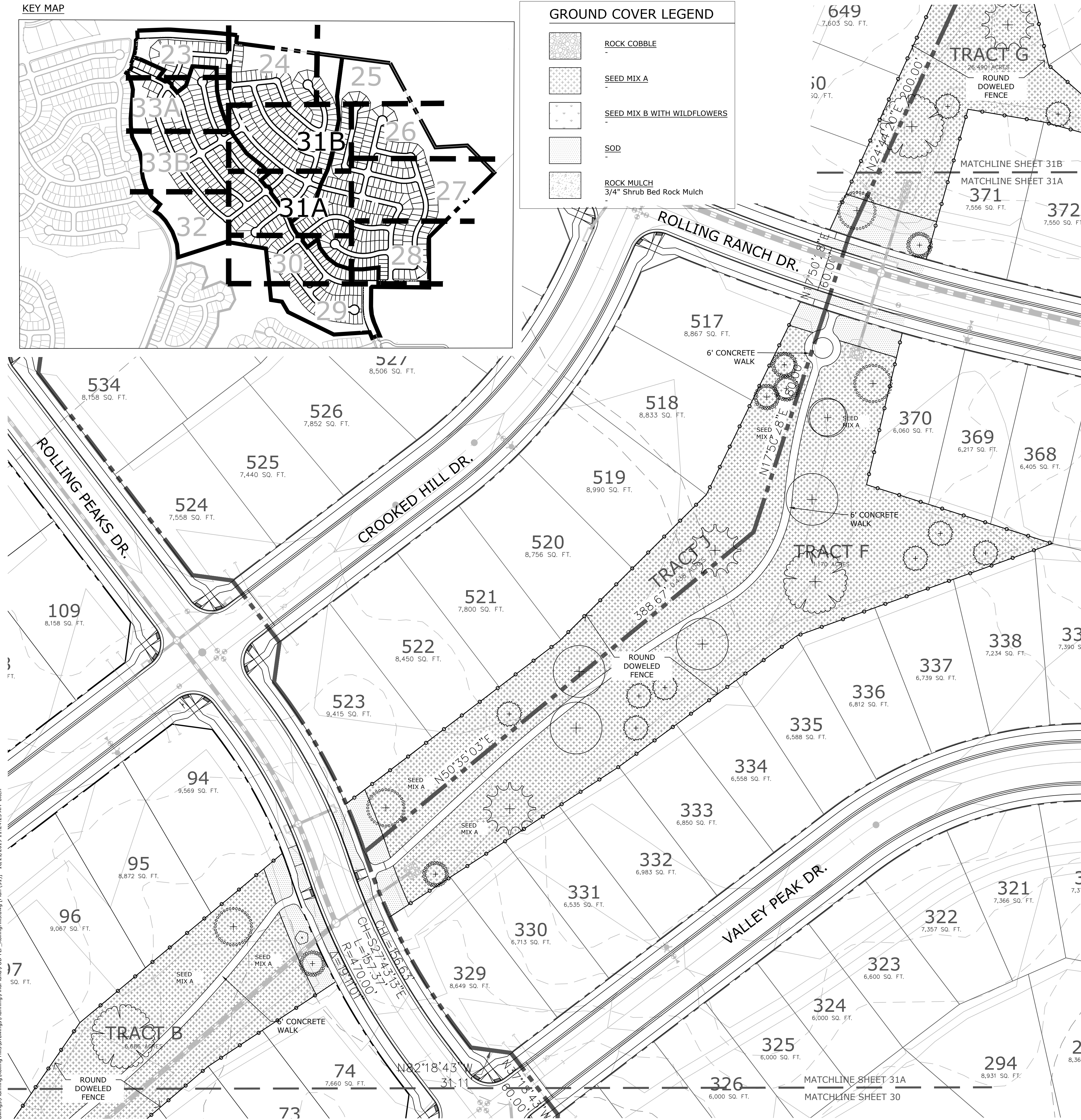


KEY MAP



GROUND COVER LEGEND

- ROCK COBBLE
- SEED MIX A
- SEED MIX B WITH WILDFLOWERS
- SOD
- ROCK MULCH  
3/4" Shrub Bed Rock Mulch



Land Planning  
Landscape  
Architecture  
Urban Design

N.E.S. Inc.  
619 N. Cascade Ave., Ste. 200  
Colorado Springs, CO 80903  
Tel. 719.471.0073  
Fax 719.471.0267  
www.nescolorado.com  
© 2012. All Rights Reserved.

Rolling Hills  
Ranch Filings 1-3  
At Meridian  
Ranch

PUD Development Plan /  
Preliminary Plan

DATE: October 19, 2019  
PROJECT MGR: J. Romero  
PREPARED BY: K. Marshall

ENTITLEMENT

DATE	BY	DESCRIPTION

LANDSCAPE PLAN

31  
OF 34

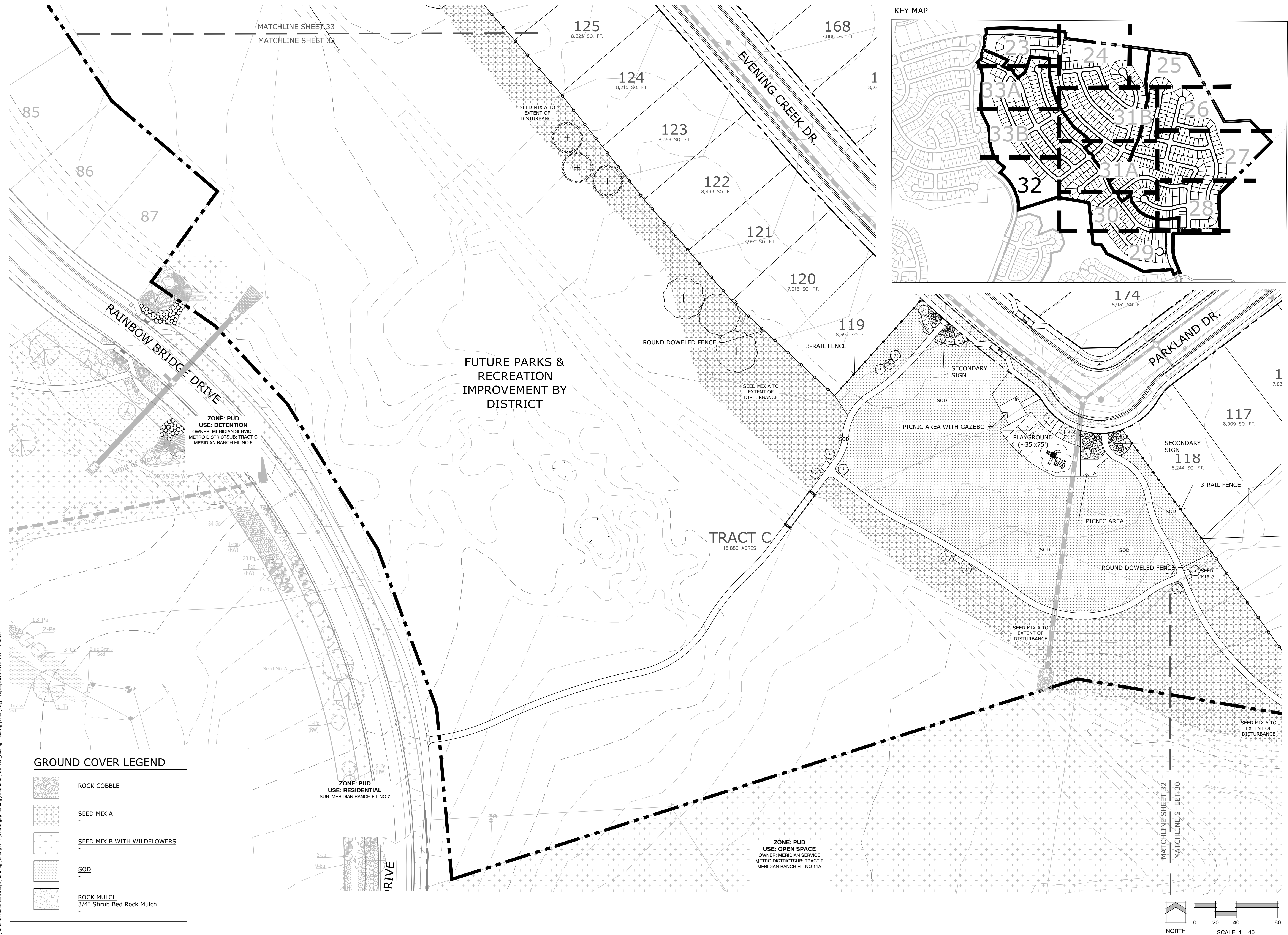
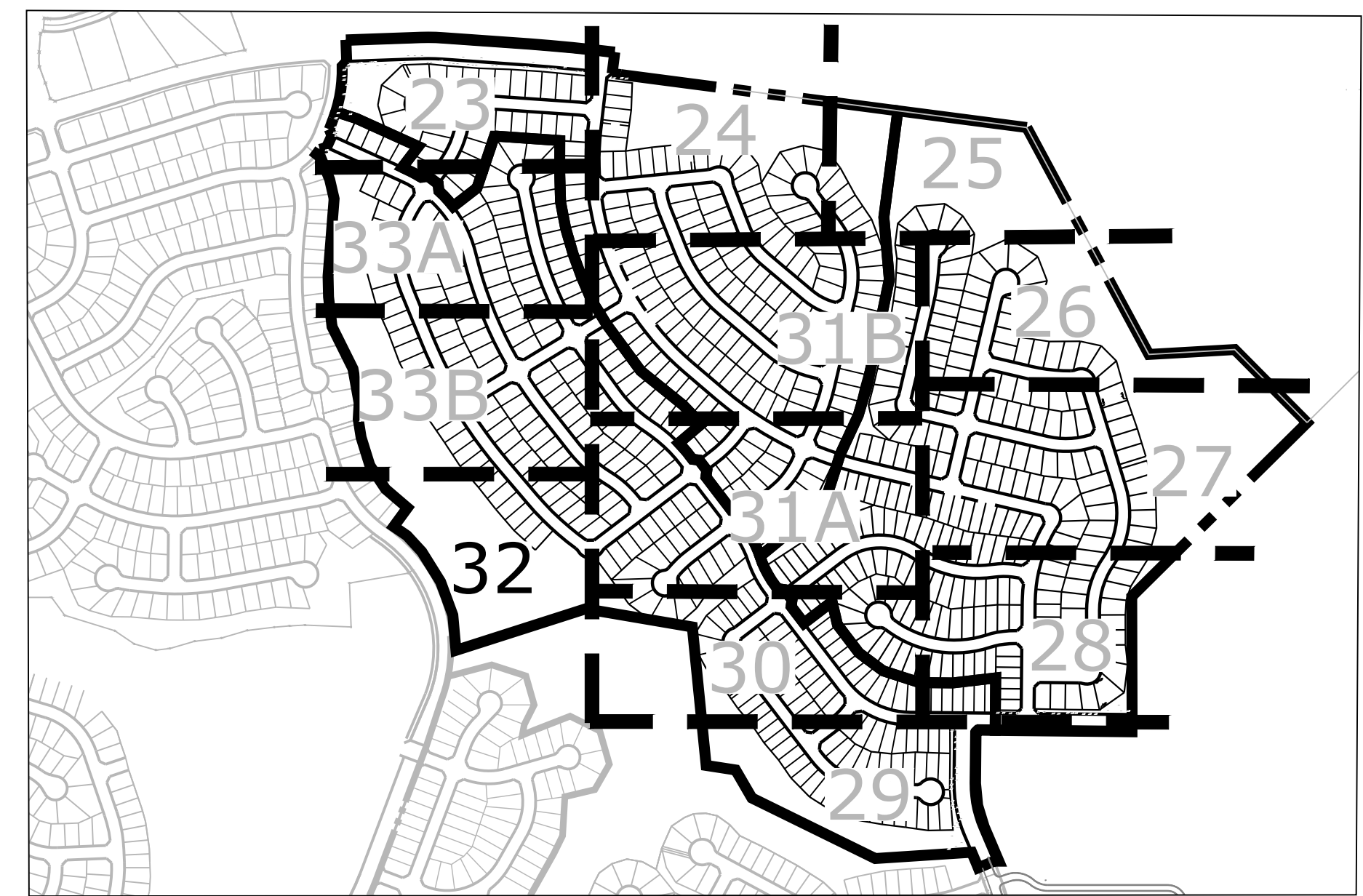
PCD# PUDSP-\_\_\_\_\_

P:\GTL\Meridian Ranch\Drawings\Planning\Rolling Hills\Drawings\Planning\Final\Land/PUD-F-1-P\_RollingHills.dwg [Plan (31)] 10/21/2019 11:24:23 AM biten





KEY MAP



GROUND COVER LEGEND

- ROCK COBBLE
- SEED MIX A
- SEED MIX B WITH WILDFLOWERS
- SOD
- ROCK MULCH  
3/4" Shrub Bed Rock Mulch

PLANNING / LANDSCAPE ARCHITECT

IN ASSOCIATION WITH

PROJECT INFO

SEAL

ISSUE INFO

ISSUE / REVISION

SHEET TITLE

SHEET NUMBER

PLANTING #

**Rolling Hills  
Ranch Filings 1-3  
At Meridian  
Ranch**

PUD Development Plan /  
Preliminary Plan

DATE: October 19, 2019  
PROJECT MGR: J. Romero  
PREPARED BY: K. Marshall

ENTITLEMENT

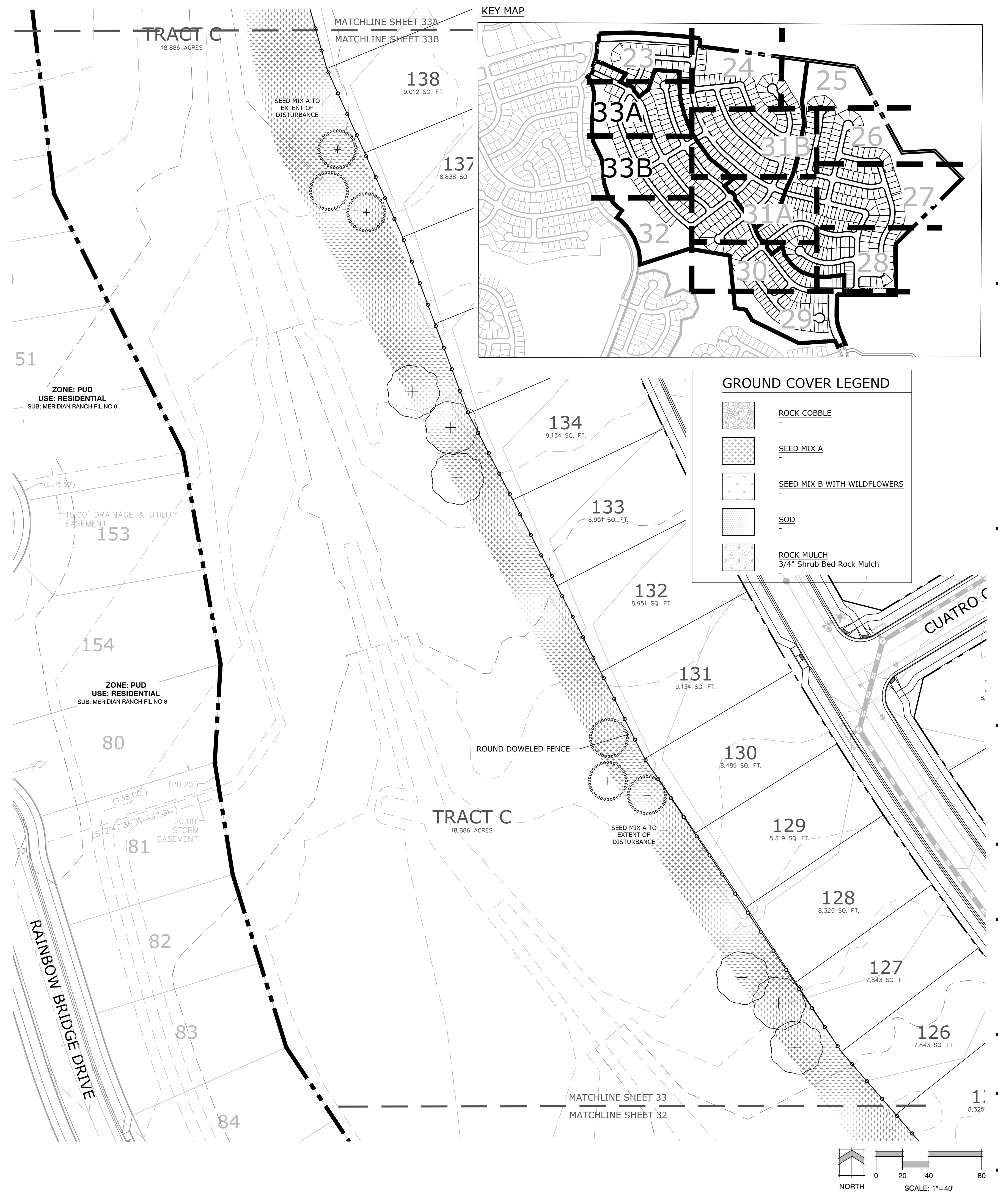
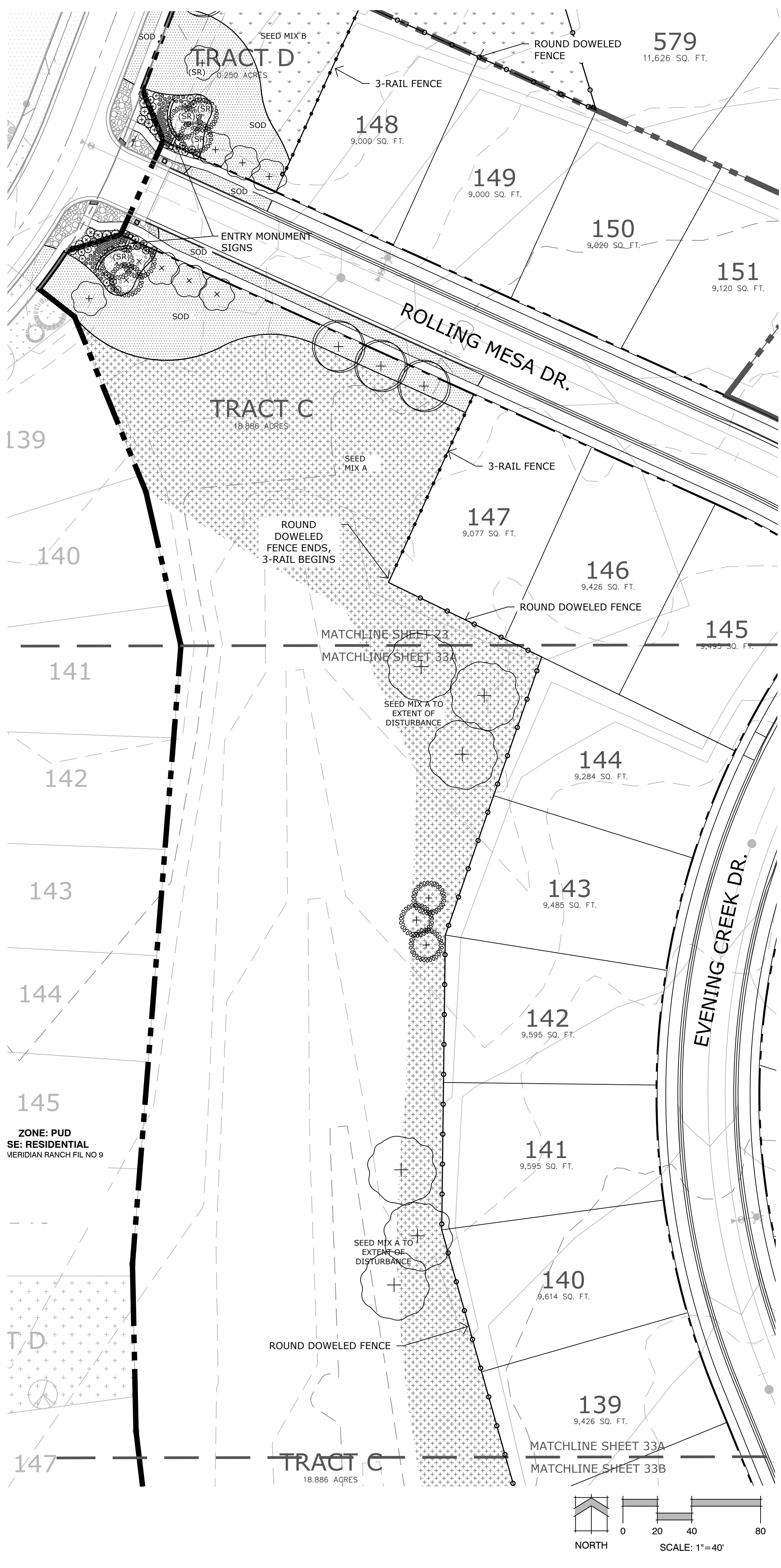
DATE:	BY:	DESCRIPTION:

LANDSCAPE PLAN

**32**  
OF 34

PCD# PUDSP-\_\_\_\_\_





P:\GTL\Meridian Ranch\Drawings\Planning\Rolling Hills\Drawings\Planning\Final\Land\PUD-P\Rolling Hills.dwg [Plan (33)] 10/21/2019 11:25:31 AM biten

Land Planning  
Landscape Architecture  
Urban Design

**NES**

N.E.S. Inc.  
619 N. Cascade Ave., Ste. 200  
Colorado Springs, CO 80903

Tel. 719.471.0073  
Fax 719.471.0267

www.nescolorado.com

© 2012. All Rights Reserved.

**Rolling Hills Ranch Filings 1-3 At Meridian Ranch**

PUD Development Plan / Preliminary Plan

DATE: October 19, 2019  
PROJECT MGR: J. Romero  
PREPARED BY: K. Marshall

**ENTITLEMENT**

DATE:	BY:	DESCRIPTION:

**LANDSCAPE PLAN**

**33**  
OF 34

PCD# PUDSP-\_\_\_\_\_