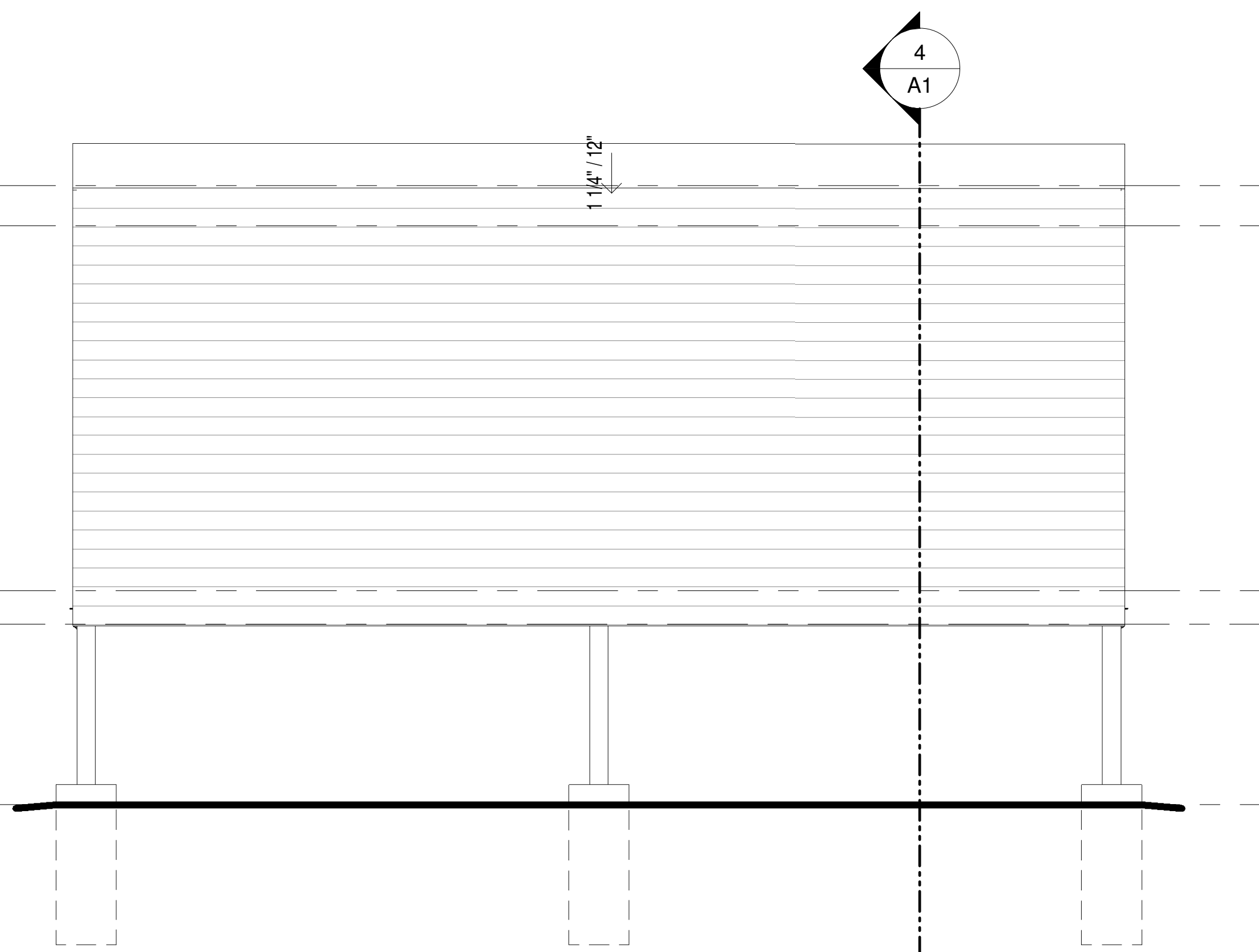


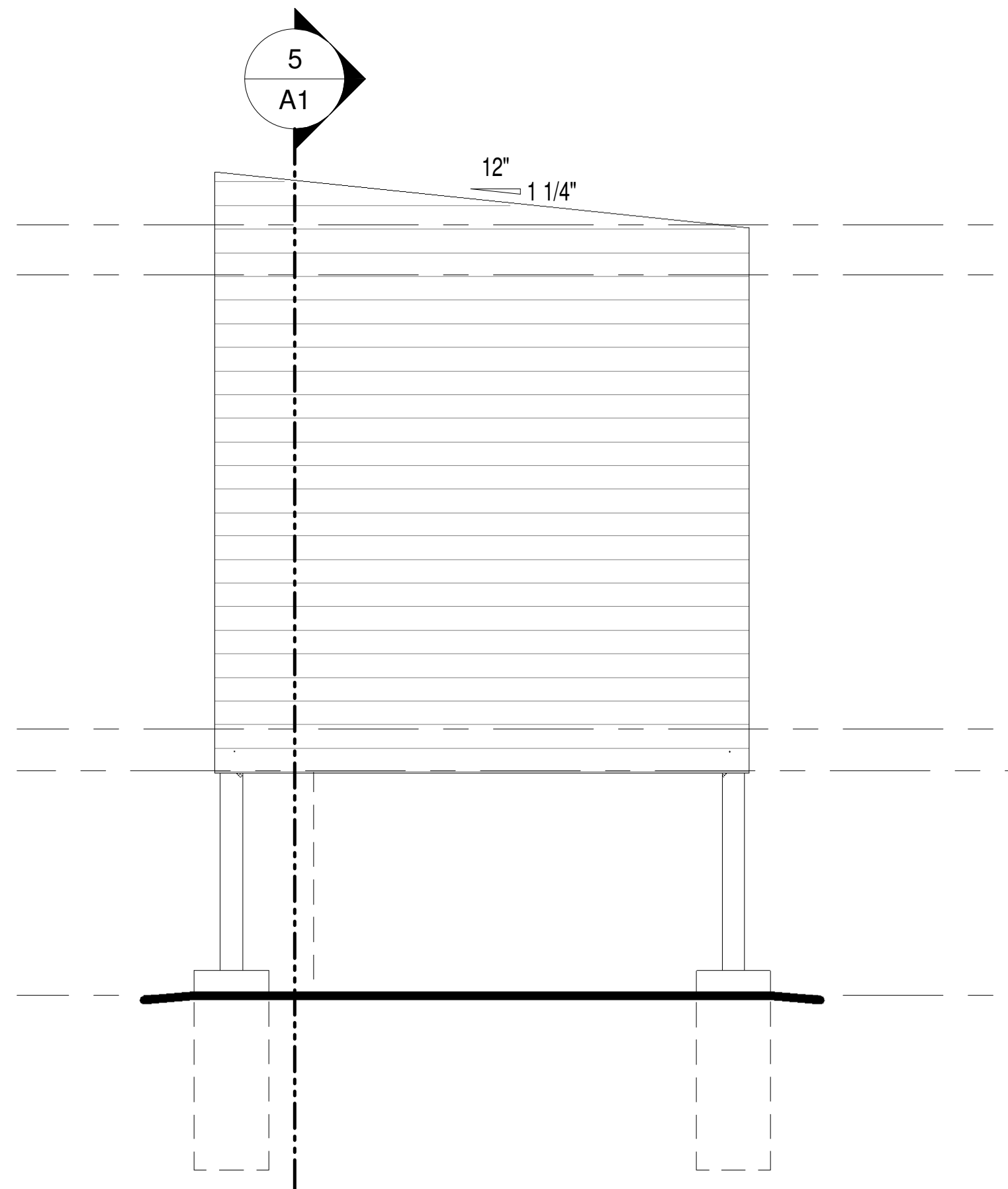
**Front Elevation**

SCALE: 1/4" = 1'-0"

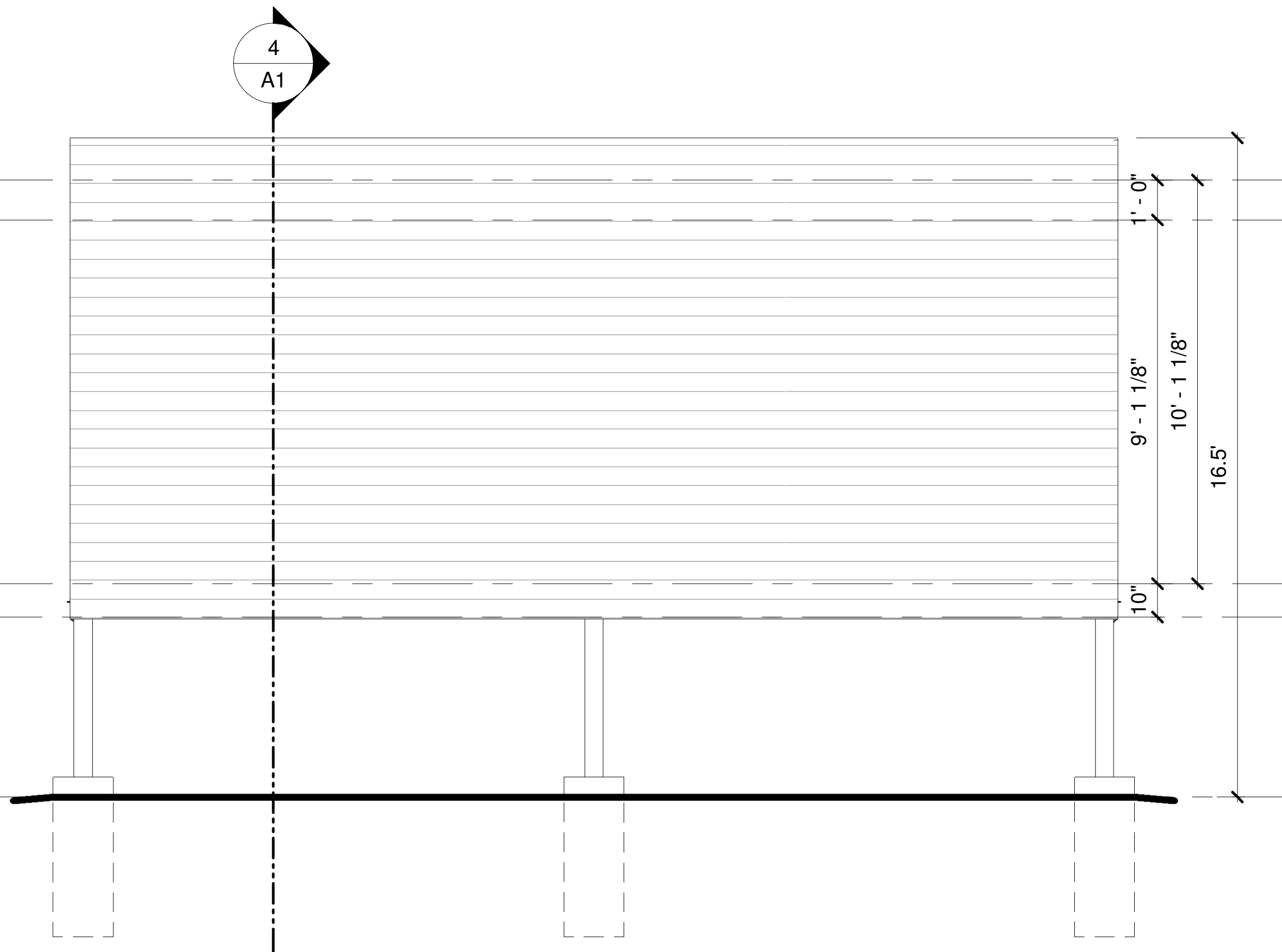


**Left Elevation**

SCALE: 1/4" = 1'-0"



**Rear Elevation**



**Right Elevation**

GENERAL NOTES

NOTE: The elevation plan depicted is only indented to represent the most visually significant type temporary accommodation expected on site if hard-sided accommodations are placed. Individual units will vary and may be replaced or improved, as needed. Accommodations will be temporary and may include tents, trailers, recreational vehicles, yurts, tiny houses, and other similar temporary accommodations. Building permits will be obtained for any accommodations requiring a permit per Pikes Peak Regional Building.

NO.	REVISION/ISSUE	DATE

**MONUMENT  
GLAMPING 2**

**VERTEX**  
Consulting Services  
455 E. Pikes Peak Avenue, Suite 101  
Colorado Springs, Colorado 80903  
719-733-8605

PROJECT NO. PPR2433	SHEET 1 OF 1
DATE 09/03/2024	
PREPARED NR	APPROVED CAD