

ATC ASSET #:
383496
T-MOBILE SITE #:
DN04253A
T-MOBILE SITE NAME:
PHANTOM CANYON_LMU



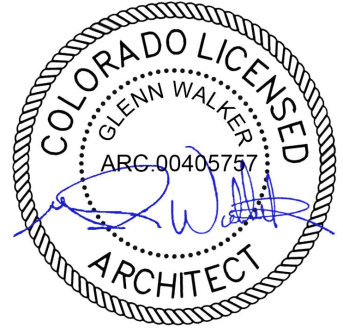
L600 PROJECT

LOCATION:
15739 PHANTOM CANYON VIEW,
COLORADO SPRINGS, CO 80926



BUSINESS LICENSE #: N/A

REVISIONS			
REV	DATE	DESCRIPTION	INT
4	06/02/21	REVISIONS	JHT
3	06/02/21	REVISIONS	JHT
2	07/05/19	REVISIONS	KS
1	05/16/19	REVISIONS	DLD
0	05/02/19	100% CONSTRUCTION	SAM
A	04/19/19	ISSUED FOR REVIEW 90%	JPN



06/18/2021

THESE PLANS AND SPECIFICATIONS, AS INSTRUMENTS OF SERVICE, ARE AND SHALL REMAIN THE PROPERTY OF POWDER RIVER DEVELOPMENT SERVICES, LLC. WHETHER THE PROJECTS FOR WHICH THEY ARE MADE ARE EXECUTED OR NOT, THESE DRAWINGS AND SPECIFICATIONS SHALL NOT BE USED BY ANY PERSON OR ENTITY ON OTHER PROJECTS WITHOUT PRIOR WRITTEN CONSENT OF THE ENGINEER.

SITE INFORMATION

T-MOBILE #: DN04253A

ATC #: 383496

15739 PHANTOM CANYON VIEW
COLORADO SPRINGS, CO
80926

SHEET TITLE:

TITLE SHEET

SHEET NUMBER:

T-1

SCOPE OF WORK

- THE SCOPE OF WORK CONSISTS OF:
1. REMOVAL OF (1) ESMB, (1) FBBC & (3) FRLB
 2. REMOVAL OF (2) ANTENNAS & (2) TMA
 3. RELOCATION OF (2) FXFC
 4. INSTALLATION OF (2) NEW AIRSCALE SM OUTDOOR AMOB w/ (1) ASIA, (2) ABIA, (1) ABIL, & (1) ASIK
 5. INSTALLATION OF (2) ANTENNAS & (3) AHLOA
 6. INSTALLATION OF (1) PENDANT & (1) HYBRID CABLE

DRIVING DIRECTIONS

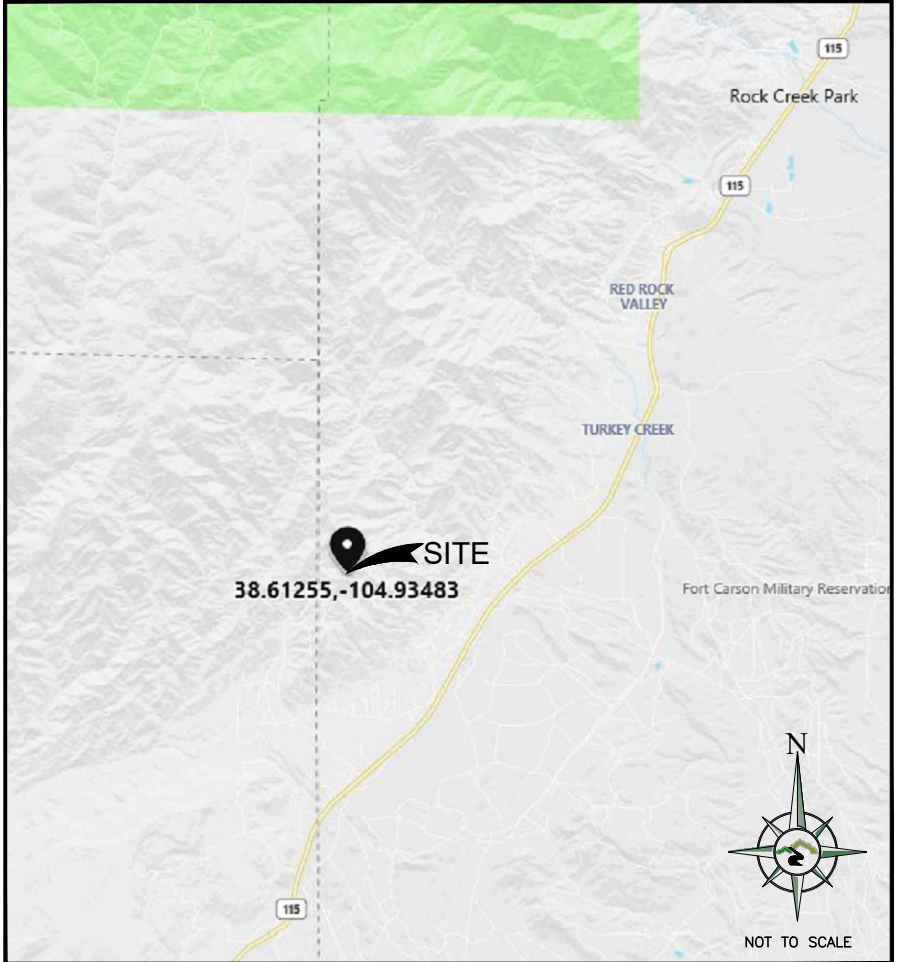
- DIRECTIONS FROM DENVER INTERNATIONAL AIRPORT:
- DEPART AIRPORT...
1. DEPART NEW CASTLE ST TOWARD RAP AVE
 2. TURN RIGHT ONTO N VAN ALLMAN ST
 3. TURN RIGHT ONTO NEW CASTLE ST
 4. ROAD NAME CHANGES TO E 78TH AVE
 5. TURN LEFT ONTO JACKSON GAP ST
 6. TAKE RAMP RIGHT FOR PENA BLVD
 7. AT EXIT PENA BLVD, TAKE RAMP LEFT FOR I-70 W / US-36 W / TUSKEGEE AIRMEN MEMORIAL HWY
 8. AT EXIT 282, TAKE RAMP RIGHT FOR I-225 SOUTH TOWARD AURORA / COLORADO SPRINGS
 9. AT EXIT 1A, TAKE RAMP LEFT FOR I-25 SOUTH TOWARD COLO SPGS
 10. AT EXIT 140, TAKE RAMP RIGHT FOR NEVADA AVE / TEJON ST TOWARD NEVADA AVE
 11. TURN RIGHT ONTO US-85 S / CO-115 S / S NEVADA AVE
 12. KEEP STRAIGHT ONTO CO-115 S
 13. TURN RIGHT ONTO RANCHO PAVO DR
 14. TURN RIGHT ONTO CALA ROJO DR
 15. TURN RIGHT TO STAY ON CALA ROJO DR
 16. TURN LEFT ONTO HENRY RIDE HEIGHTS
 17. TURN RIGHT ONTO PHANTOM CANYON VIEW
 18. ARRIVE AT PHANTOM CANYON VIEW ON THE RIGHT
 19. THE LAST INTERSECTION IS HENRY RIDE HEIGHTS

PROFESSIONAL LICENSURE

I CERTIFY THAT THESE DRAWINGS WERE PREPARED BY ME OR UNDER MY DIRECT SUPERVISION AND CONTROL AND TO THE BEST OF MY KNOWLEDGE AND BELIEF COMPLY WITH THE REQUIREMENTS OF THE GOVERNING LOCAL BUILDING CODE.

LICENSED PROFESSIONAL
EXPIRES: SIGNED:

VICINITY MAP



SITE PHOTO



DRAWING INDEX

SHEET NO.	DESCRIPTION
T-1	TITLE SHEET
C-0	PROPERTY PLAN
C-1	SITE PLAN
C-1.1	EQUIPMENT PLANS
C-2	ELEVATIONS
C-3	ANTENNA PLANS
C-3.1	ANTENNA & CABLE SCHEDULE
C-3.2	RFDS DIAGRAM
C-4	EQUIPMENT DETAILS
G-1	GROUNDING PLAN
G-2	GROUNDING DETAILS
GN-1	GENERAL NOTES

GENERAL NOTES:

CONTRACTOR SHALL VERIFY ALL PLANS AND EXISTING DIMENSIONS AND CONDITIONS AT THE PROJECT SITE AND SHALL IMMEDIATELY NOTIFY THE ENGINEER IN WRITING OF ANY DISCREPANCIES BEFORE PROCEEDING WITH THE WORK OR BE RESPONSIBLE FOR SAME.

THE SEAL CERTIFIES ONLY THE CIVIL ENGINEERING DESIGN AND RELATED DETAILS SHOWN ON THESE THIS SEAL DOES NOT CERTIFY ANY ARCHITECTURAL, ELECTRICAL, MECHANICAL, STRUCTURAL DESIGN, AND RELATED DETAILS INCLUDED IN THESE PLANS.

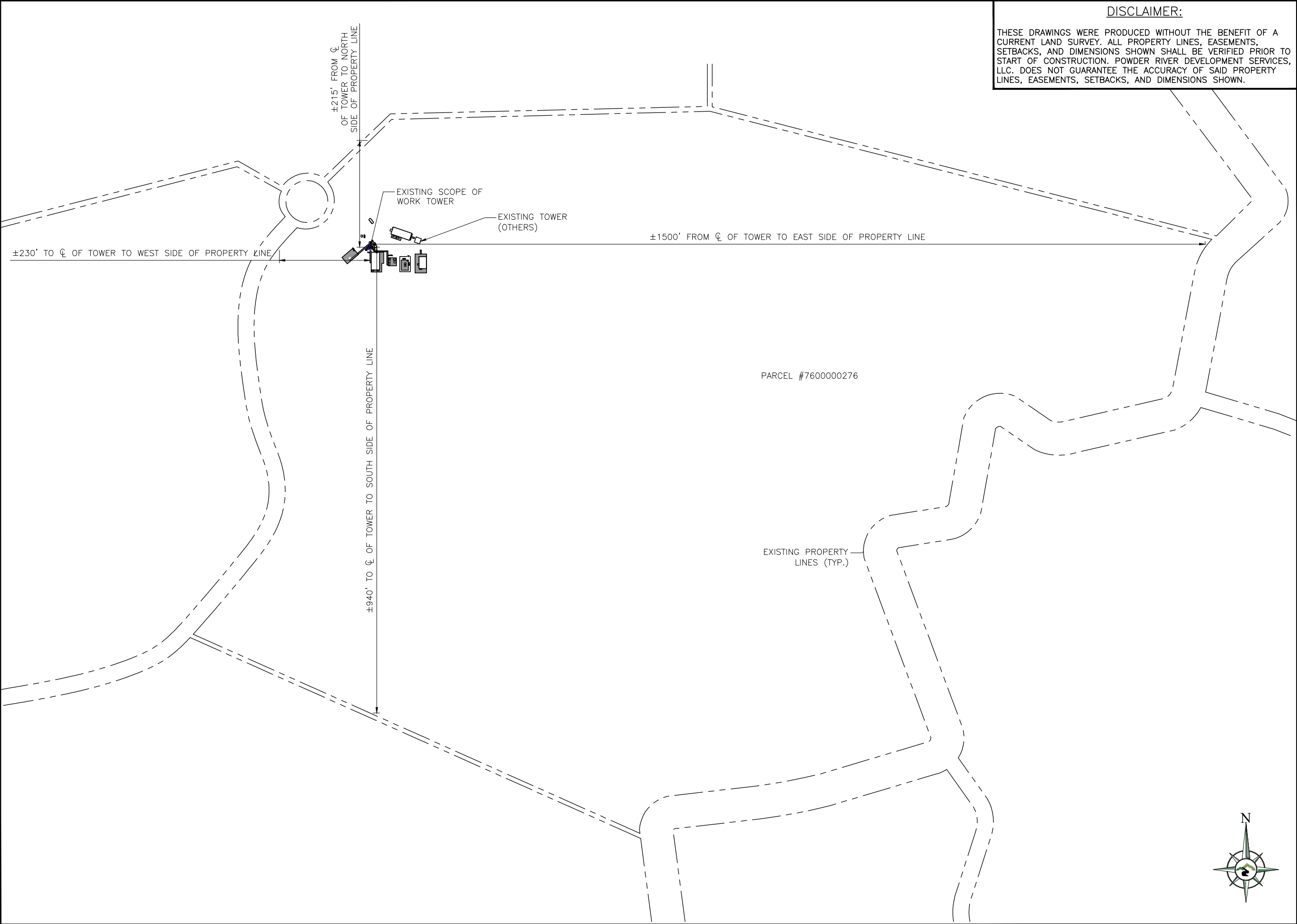
FOR SITES WHERE A CRANE IS NECESSARY, THE CONTRACTOR SHALL CONFIRM AN UNOBSTRUCTED ROUTE FOR THE CRANE FROM PUBLIC ROAD TO TOWER SITE PRIOR TO CONSTRUCTION. NO AERIAL OBSTRUCTIONS UNDER FIFTEEN FEET ABOVE GRADE, INCLUDING AERIAL UTILITY LINES, ARE ALLOWED ALONG SAID CRANE ROUTE.

GC SHALL CONTACT THE A&E FIRM PRIOR TO BIDWALK AND CONSTRUCTION START TO CONFIRM THAT DRAWINGS ARE THE MOST RECENT SET.

PROJECT INFORMATION

SITE INFORMATION: LATITUDE: N 38° 36' 45.1794" (NAD 83) LONGITUDE: W -104° 56' 5.388" (NAD 83) TOWER TYPE: SELF SUPPORT TOWER	A&E SERVICES: POWDER RIVER DEVELOPMENT SERVICES, LLC. 408 S. EAGLE ROAD, SUITE 200 EAGLE, ID 83616 CONTACT: TODD ROTGE PHONE: 541.647.2777 EMAIL: todd.rotge@powderriverdev.com PROGRAM MANAGER - SITE ACQUISITION DIVISION: TOWER ENGINEERING PROFESSIONALS, INC. 4710 E. ELWOOD STREET, SUITE 9 PHOENIX, AZ 85040 CONTACT: KARLA RICHARDS PHONE: 602.418.6050 TOWER CONTACT: AMERICAN TOWER 10 PRESIDENTIAL WAY WOBURN, MA 01801 CONTACT: HERBERT HAMLIN PHONE: 303.618.3202 EMAIL: herbert.hamlin@americantower.com	APPLICABLE CODES: BUILDING CODE 2017 IBC ELECTRICAL CODE 2017 NEC
---	--	--





DISCLAIMER:
THESE DRAWINGS WERE PRODUCED WITHOUT THE BENEFIT OF A CURRENT LAND SURVEY. ALL PROPERTY LINES, EASEMENTS, SETBACKS, AND DIMENSIONS SHOWN SHALL BE VERIFIED PRIOR TO START OF CONSTRUCTION. POWDER RIVER DEVELOPMENT SERVICES, LLC. DOES NOT GUARANTEE THE ACCURACY OF SAID PROPERTY LINES, EASEMENTS, SETBACKS, AND DIMENSIONS SHOWN.



BUSINESS LICENSE #: N/A

REVISIONS			
REV	DATE	DESCRIPTION	INT
4	06/02/21	REVISIONS	JHT
3	06/02/21	REVISIONS	JHT
2	07/05/19	REVISIONS	KS
1	05/16/19	REVISIONS	DLD
0	05/02/19	100% CONSTRUCTION	SAM
A	04/19/19	ISSUED FOR REVIEW 90%	JPN



THESE PLANS AND SPECIFICATIONS, AS INSTRUMENTS OF SERVICE, ARE AND SHALL REMAIN THE PROPERTY OF POWDER RIVER DEVELOPMENT SERVICES, LLC WHETHER THE PROJECTS FOR WHICH THEY ARE MADE ARE EXECUTED OR NOT. THESE DRAWINGS AND SPECIFICATIONS SHALL NOT BE USED BY ANY PERSON OR ENTITY ON OTHER PROJECTS WITHOUT PRIOR WRITTEN CONSENT OF THE ENGINEER.

SITE INFORMATION

T-MOBILE #: DN04253A

ATC #: 383496

15739 PHANTOM CANYON VIEW
COLORADO SPRINGS, CO
80926

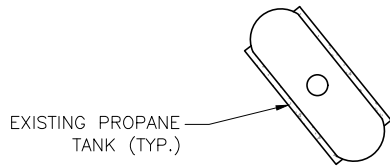
SHEET TITLE:
PROPERTY PLAN

SHEET NUMBER:
C-0

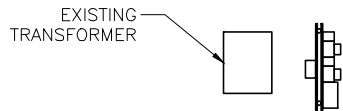
THE INFORMATION CONTAINED IN THIS SET OF CONSTRUCTION DOCUMENTS IS PROPRIETARY BY NATURE. ANY USE OR DISCLOSURE OTHER THAN THAT WHICH RELATES TO CARRIER SERVICES IS STRICTLY PROHIBITED.

LEGEND:

- X— CHAIN LINK FENCE
- CONCRETE
- ICE BRIDGE
- STEEL PLATFORM



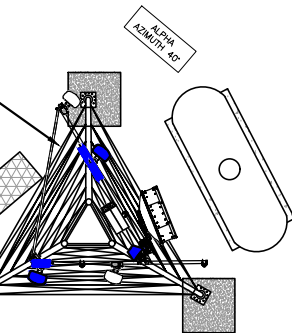
EXISTING PROPANE TANK (TYP.)



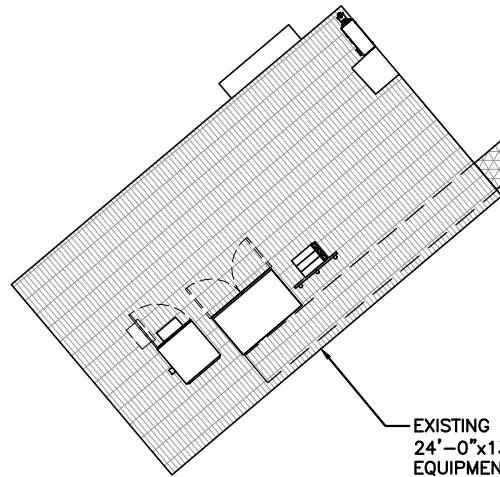
EXISTING TRANSFORMER

EXISTING SELF SUPPORT TOWER SHOWING NEW T-MOBILE CONFIGURATION; SEE SHEET C-3 FOR MORE INFO

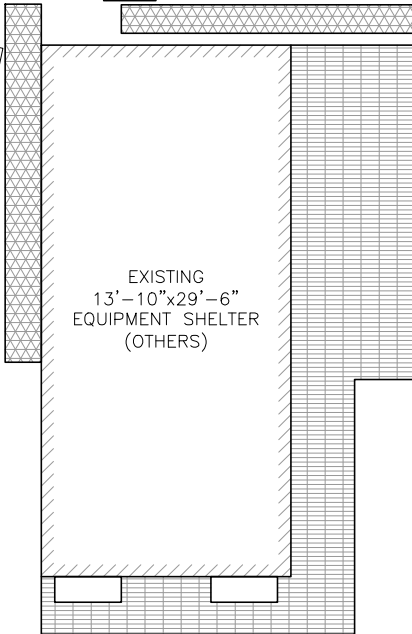
EXISTING T-MOBILE ICE BRIDGE



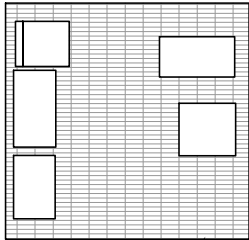
EXISTING T-MOBILE 24'-0"x13'-10" EQUIPMENT PLATFORM w/ EXISTING & NEW EQUIPMENT



EXISTING 13'-10"x29'-6" EQUIPMENT SHELTER (OTHERS)

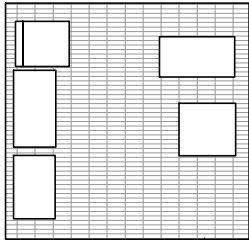


EXISTING ICE BRIDGE (OTHERS)(TYP.)

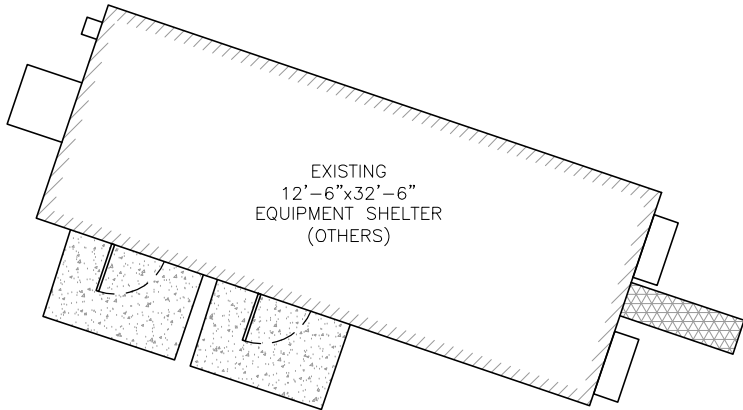


EXISTING H-FRAME (OTHERS)(TYP.)

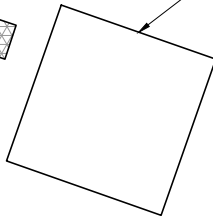
EXISTING 13'-6"x13'-6" EQUIPMENT PLATFORM (OTHERS)



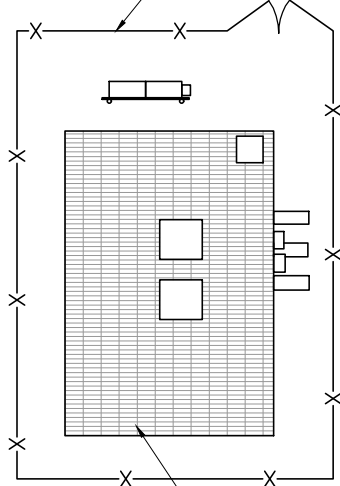
EXISTING 12'-6"x32'-6" EQUIPMENT SHELTER (OTHERS)



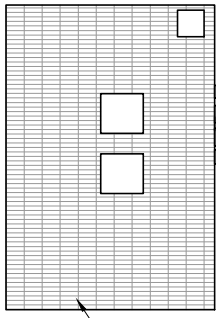
EXISTING SELF SUPPORT TOWER (OTHERS)



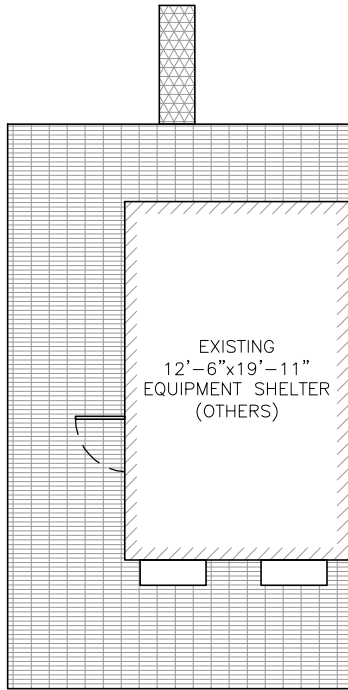
EXISTING CHAIN LINK FENCE w/ BARBED WIRE



EXISTING 16'-11"x11'-7" EQUIPMENT PLATFORM (OTHERS)



EXISTING 12'-6"x19'-11" EQUIPMENT SHELTER (OTHERS)



DISCLAIMER:

THESE DRAWINGS WERE PRODUCED WITHOUT THE BENEFIT OF A CURRENT LAND SURVEY. ALL PROPERTY LINES, EASEMENTS, SETBACKS, AND DIMENSIONS SHOWN SHALL BE VERIFIED PRIOR TO START OF CONSTRUCTION. POWDER RIVER DEVELOPMENT SERVICES, LLC. DOES NOT GUARANTEE THE ACCURACY OF SAID PROPERTY LINES, EASEMENTS, SETBACKS, AND DIMENSIONS SHOWN.

T-Mobile



BUSINESS LICENSE #: N/A

REVISIONS			
REV	DATE	DESCRIPTION	INT
4	06/02/21	REVISIONS	JHT
3	06/02/21	REVISIONS	JHT
2	07/05/19	REVISIONS	KS
1	05/16/19	REVISIONS	DLD
0	05/02/19	100% CONSTRUCTION	SAM
A	04/19/19	ISSUED FOR REVIEW 90%	JPN



THESE PLANS AND SPECIFICATIONS, AS INSTRUMENTS OF SERVICE, ARE AND SHALL REMAIN THE PROPERTY OF POWDER RIVER DEVELOPMENT SERVICES, LLC WHETHER THE PROJECTS FOR WHICH THEY ARE MADE ARE EXECUTED OR NOT. THESE DRAWINGS AND SPECIFICATIONS SHALL NOT BE USED BY ANY PERSON OR ENTITY ON OTHER PROJECTS WITHOUT PRIOR WRITTEN CONSENT OF THE ENGINEER.

SITE INFORMATION

T-MOBILE #: DN04253A

ATC #: 383496

15739 PHANTOM CANYON VIEW
COLORADO SPRINGS, CO
80926

SHEET TITLE:

SITE PLAN

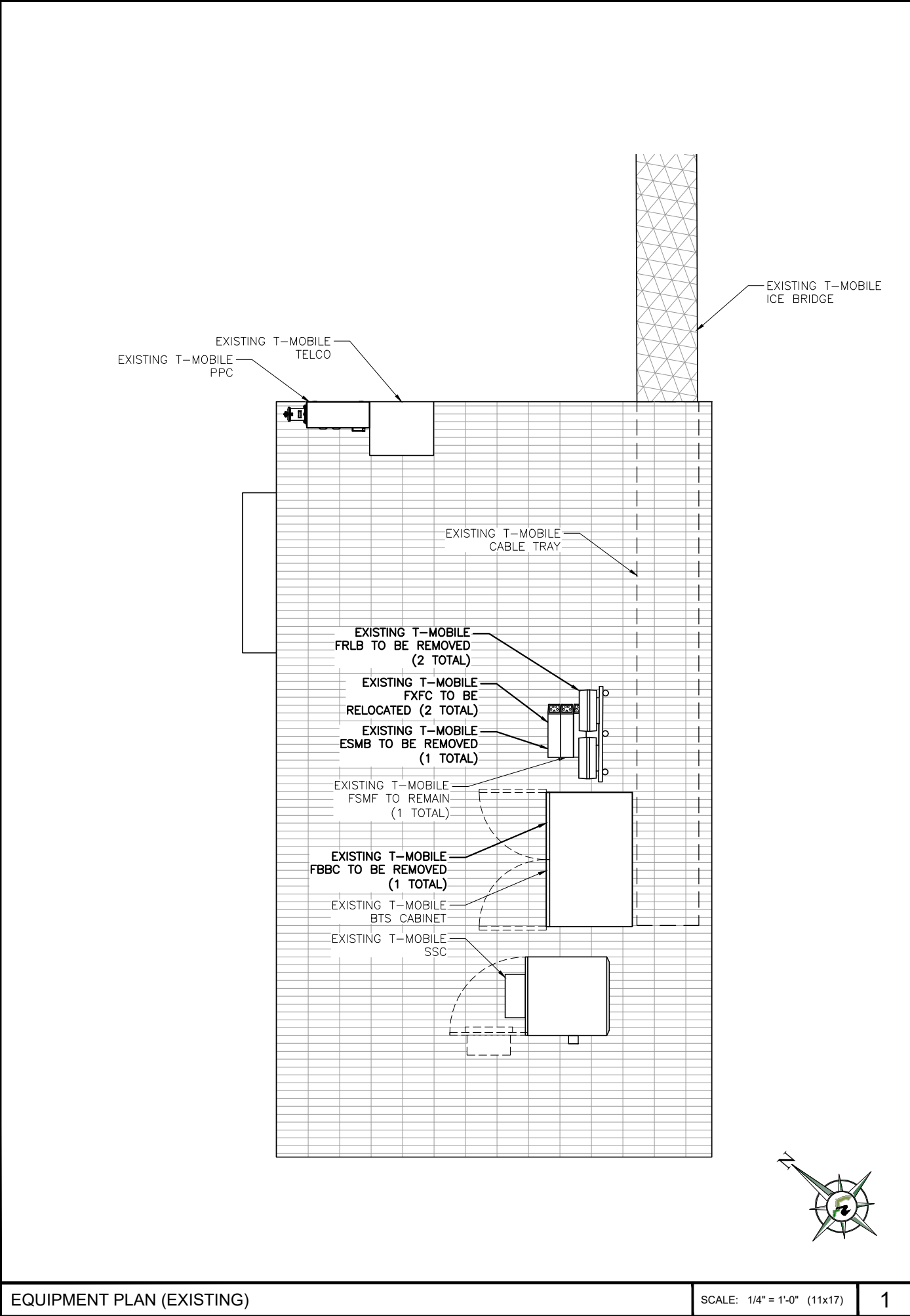
SHEET NUMBER:

C-1

SITE PLAN

SCALE: 3/32" = 1'-0" (11x17)

1



EQUIPMENT PLAN (EXISTING)

SCALE: 1/4" = 1'-0" (11x17)

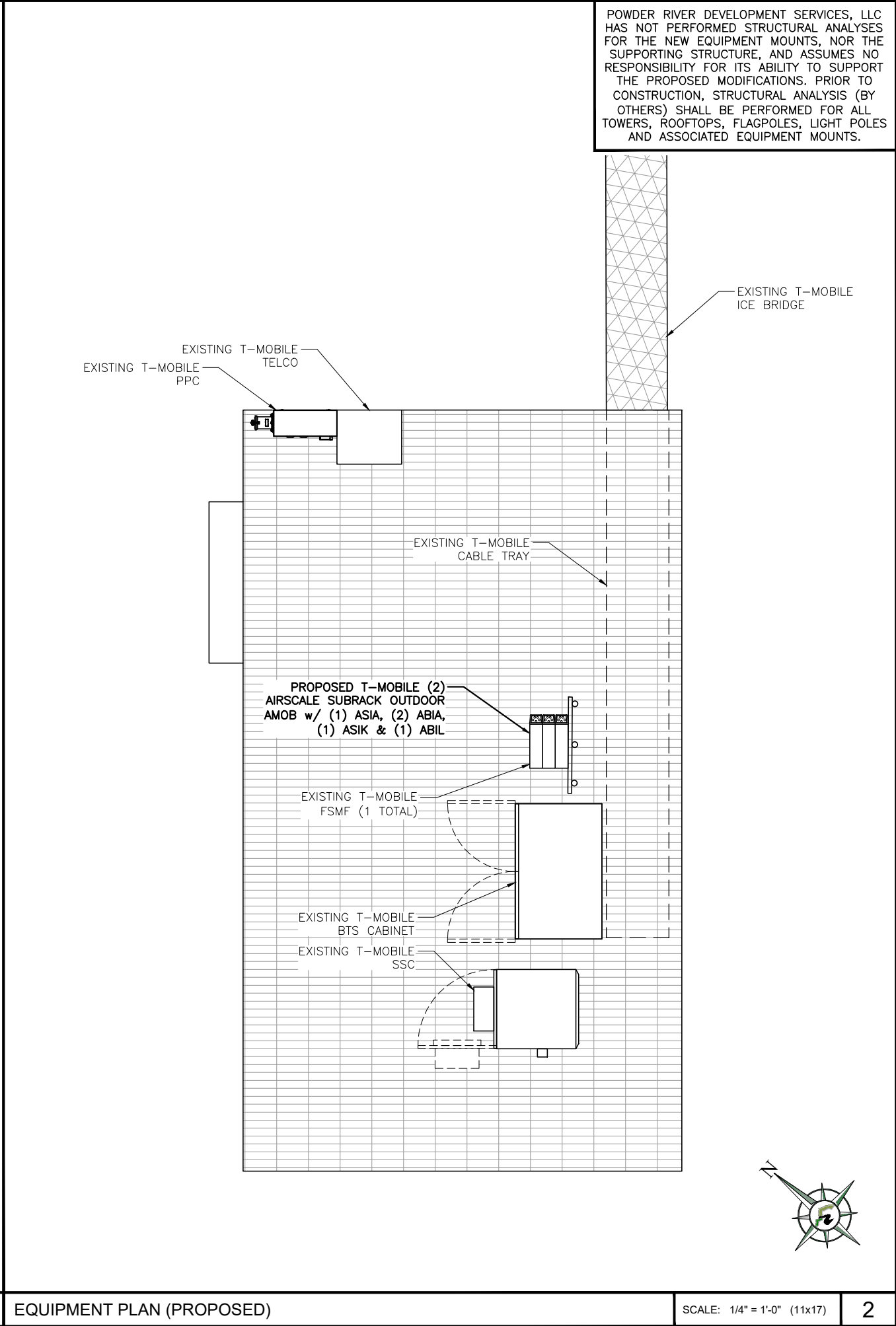
1

EQUIPMENT PLAN (PROPOSED)

SCALE: 1/4" = 1'-0" (11x17)

2

POWDER RIVER DEVELOPMENT SERVICES, LLC HAS NOT PERFORMED STRUCTURAL ANALYSES FOR THE NEW EQUIPMENT MOUNTS, NOR THE SUPPORTING STRUCTURE, AND ASSUMES NO RESPONSIBILITY FOR ITS ABILITY TO SUPPORT THE PROPOSED MODIFICATIONS. PRIOR TO CONSTRUCTION, STRUCTURAL ANALYSIS (BY OTHERS) SHALL BE PERFORMED FOR ALL TOWERS, ROOFTOPS, FLAGPOLES, LIGHT POLES AND ASSOCIATED EQUIPMENT MOUNTS.



T-Mobile



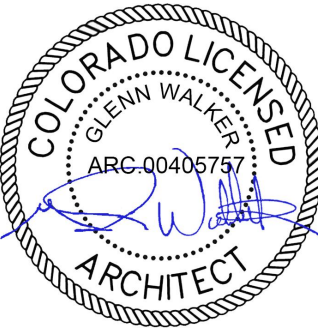
AMERICAN TOWER®



POWDER RIVER
Development Services, LLC

BUSINESS LICENSE #: N/A

REVISIONS			
REV	DATE	DESCRIPTION	INT
4	06/02/21	REVISIONS	JHT
3	06/02/21	REVISIONS	JHT
2	07/05/19	REVISIONS	KS
1	05/16/19	REVISIONS	DLD
0	05/02/19	100% CONSTRUCTION	SAM
A	04/19/19	ISSUED FOR REVIEW 90%	JPN



THESE PLANS AND SPECIFICATIONS, AS INSTRUMENTS OF SERVICE, ARE AND SHALL REMAIN THE PROPERTY OF POWDER RIVER DEVELOPMENT SERVICES, LLC WHETHER THE PROJECTS FOR WHICH THEY ARE MADE ARE EXECUTED OR NOT. THESE DRAWINGS AND SPECIFICATIONS SHALL NOT BE USED BY ANY PERSON OR ENTITY ON OTHER PROJECTS WITHOUT PRIOR WRITTEN CONSENT OF THE ENGINEER.

SITE INFORMATION

T-MOBILE #: DN04253A

ATC #: 383496



15739 PHANTOM CANYON VIEW
COLORADO SPRINGS, CO
80926

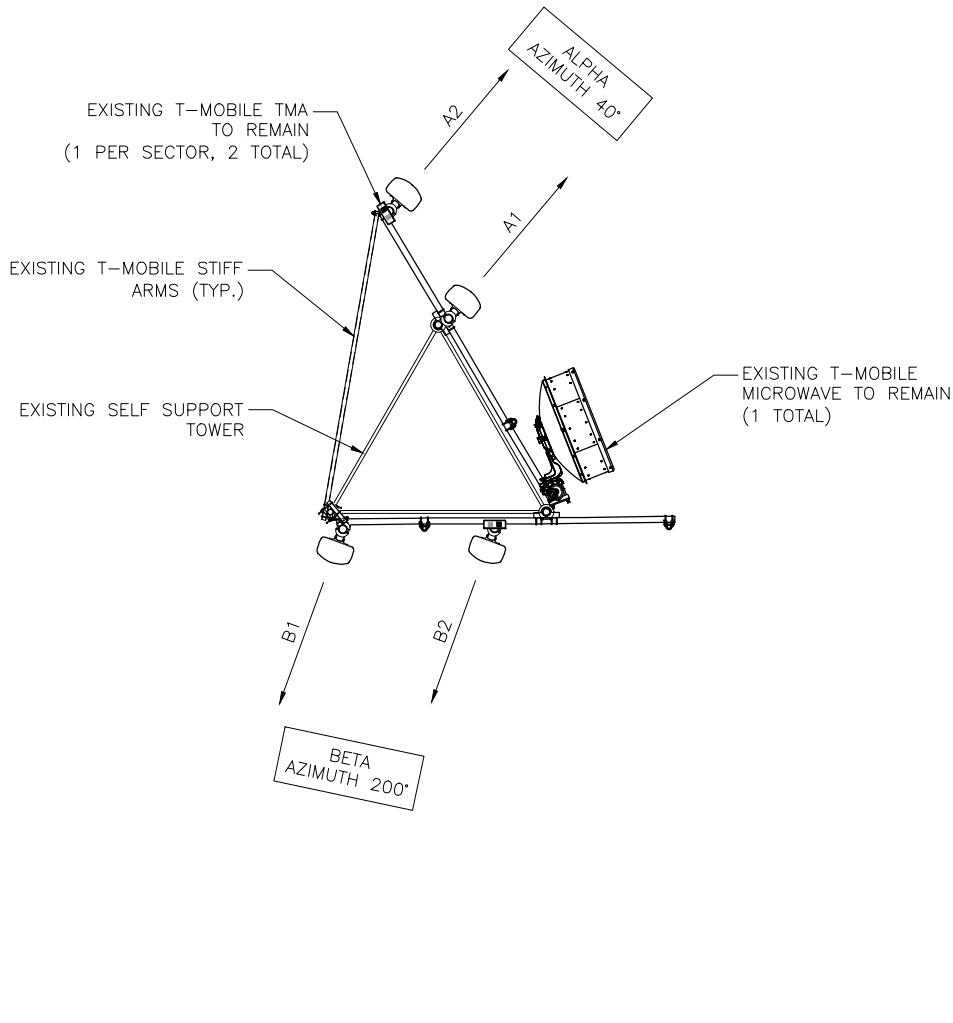
SHEET TITLE:

EQUIPMENT PLANS

SHEET NUMBER:

C-1.1

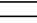





LEGEND:	
	EXISTING TMA
	EXISTING ANTENNA

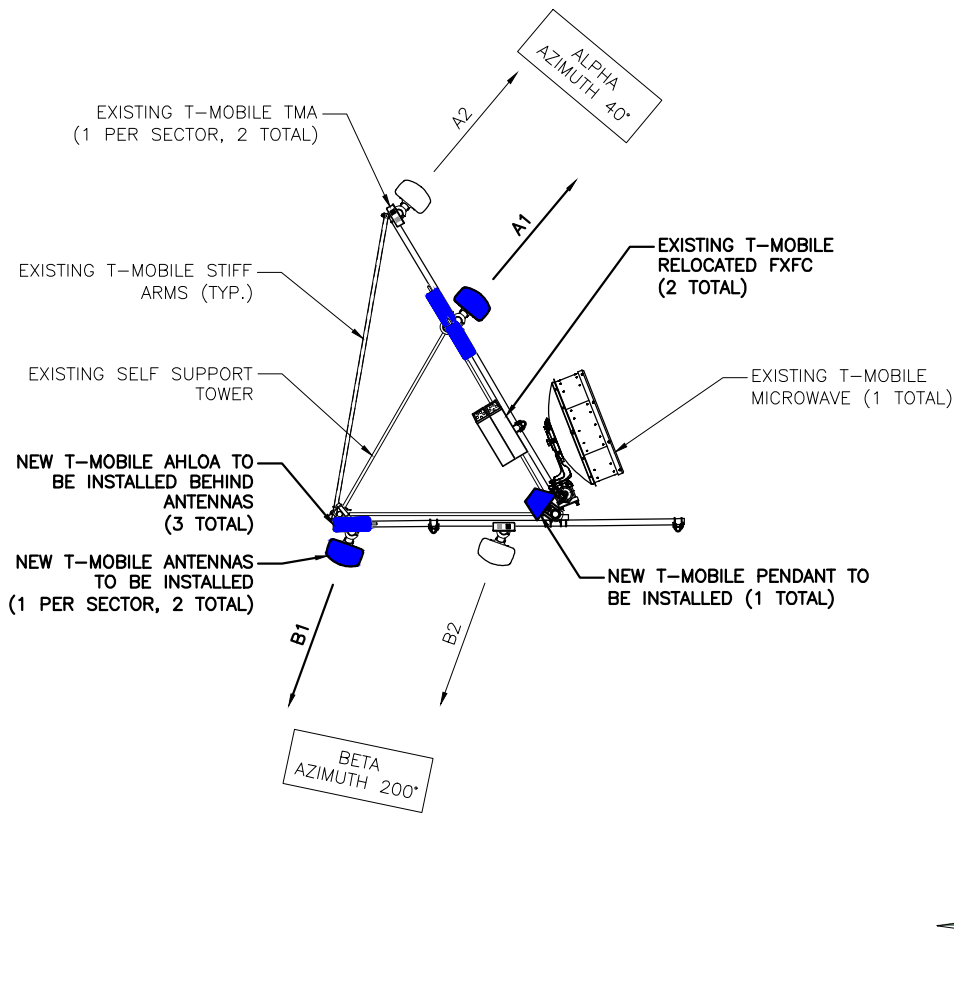


ANTENNA PLAN (EXISTING)

SCALE: N.T.S.

1

LEGEND:	
	EXISTING FXFC
	EXISTING TMA
	EXISTING ANTENNA
	NEW ANTENNA
	NEW AHLOA
	NEW PENDANT



ANTENNA PLAN (PROPOSED)

SCALE: N.T.S.

2

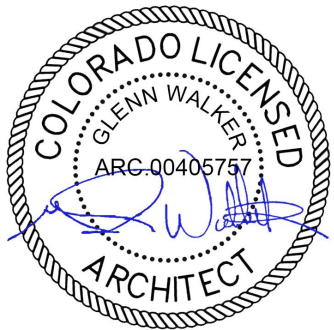
1. STRUCTURAL ANALYSIS PERFORMED BY OTHERS. CONTRACTOR TO THOROUGHLY REVIEW THE TOWER STRUCTURAL ANALYSIS FOR INFORMATION PERTAINING TO TOWER UPGRADES, MOUNTING TYPES, ANTENNA HEIGHTS AND CABLE ROUTING, ANY OTHER DISCREPANCIES BETWEEN DRAWINGS, STRUCTURAL ANALYSIS AND TOWER PLANS SHOULD BE BROUGHT TO THE ATTENTION OF THE PROJECT MANAGER PRIOR TO BIDDING AND INSTALLATION.

2. POWDER RIVER DEVELOPMENT SERVICES, LLC HAS NOT PERFORMED STRUCTURAL ANALYSES FOR THE NEW EQUIPMENT MOUNTS, NOR THE SUPPORTING STRUCTURE, AND ASSUMES NO RESPONSIBILITY FOR ITS ABILITY TO SUPPORT THE PROPOSED MODIFICATIONS. PRIOR TO CONSTRUCTION, STRUCTURAL ANALYSIS (BY OTHERS) SHALL BE PERFORMED FOR ALL TOWERS, ROOFTOPS, FLAGPOLES, LIGHT POLES AND ASSOCIATED EQUIPMENT MOUNTS.



BUSINESS LICENSE #: N/A

REVISIONS			
REV	DATE	DESCRIPTION	INT
4	06/02/21	REVISIONS	JHT
3	06/02/21	REVISIONS	JHT
2	07/05/19	REVISIONS	KS
1	05/16/19	REVISIONS	DLD
0	05/02/19	100% CONSTRUCTION	SAM
A	04/19/19	ISSUED FOR REVIEW 90%	JPN



THESE PLANS AND SPECIFICATIONS, AS INSTRUMENTS OF SERVICE, ARE AND SHALL REMAIN THE PROPERTY OF POWDER RIVER DEVELOPMENT SERVICES, LLC WHETHER THE PROJECTS FOR WHICH THEY ARE MADE ARE EXECUTED OR NOT. THESE DRAWINGS AND SPECIFICATIONS SHALL NOT BE USED BY ANY PERSON OR ENTITY ON OTHER PROJECTS WITHOUT PRIOR WRITTEN CONSENT OF THE ENGINEER.

SITE INFORMATION

T-MOBILE #: DN04253A

ATC #: 383496

15739 PHANTOM CANYON VIEW
COLORADO SPRINGS, CO
80926

SHEET TITLE:

ANTENNA PLANS

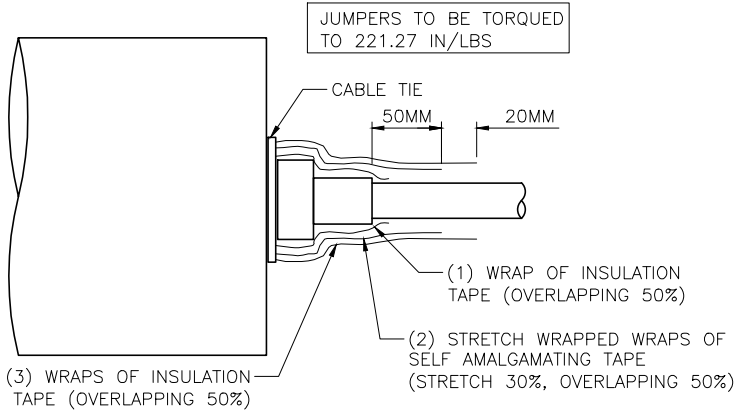
SHEET NUMBER:

C-3

NEW AND EXISTING ANTENNA AND CABLE SCHEDULE															
SECTOR	POS	AZI	RAD CENTER	TECHNOLOGY	ANTENNA	STATUS	RRU TYPE	TMA	CABLE STATUS	COAX CABLE LENGTH	HCS FACTORY LENGTH	JUMPER LENGTH			
ALPHA	1	40°	109'	L1900/G1900	ANDREW TMBX-6517-R2M	RE USE EXISTING	(2) FXFC	(1) ETW190VS12UB	(1) NEW HYBRID CABLE & EXISTING COAX CABLES TO REMAIN	EXISTING	150'	≤ 15'-0"			
	2	40°	109'	L7/L6/N6	NEW COMMScope FFHH-65C-R3	NEW	(2) NEW AHLOA	≤ 15'-0"							
	3														
	4														
BETA	1	200°	109'	L1900/G1900	ANDREW TMBX-6517-R2M	RE USE EXISTING	(*)	(1) ETW190VS12UB							≤ 15'-0"
	2	200°	109'	L7/L6/N6	NEW COMMScope FFHH-65C-R3	NEW	NEW AHLOA							≤ 15'-0"	
	3														
	4														
GAMMA															
(*) SHARED w/ ALL SECTORS															
IMPORTANT NOTE: PLEASE REFER TO LATEST RFDS SHEET FOR NSN CONFIGURATION. GC TO CAP ALL UNUSED PORTS.															

ANTENNA SCHEDULE (PROPOSED)

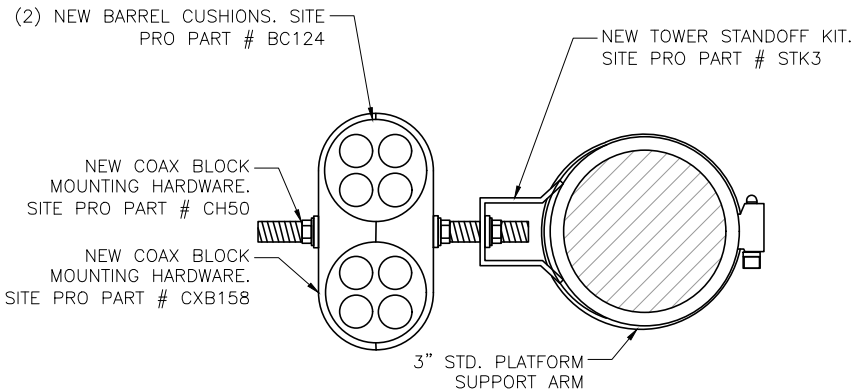
1



RF JUMPERCONNECTION DETAIL

SCALE: N.T.S.

3



RF JUMPER MOUNTING DETAIL

SCALE: N.T.S.

4

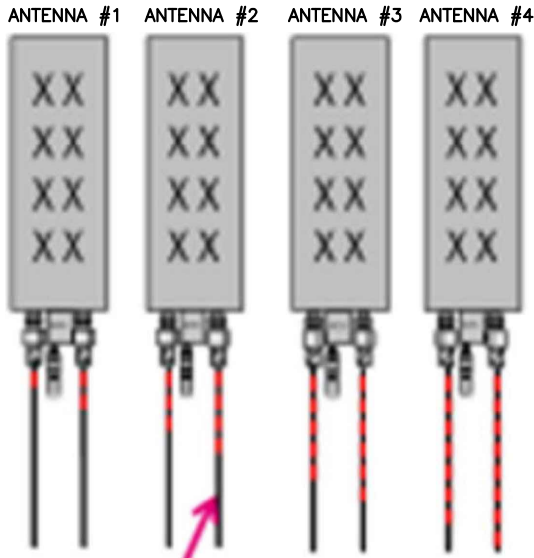
COAX COLOR CODING:
ANTENNAS WILL BE LABELED (BACK OF ANTENNA VIEW) RIGHT TO LEFT 1-X PORTS

COAX/JUMOER LINES WILL BE IDENTIFIED BY SECTOR COLOR AND BY NUMBER OF BANDS AROUND THE COAX/JUMPER

SECTOR A	RED
SECTOR B	GREEN
SECTOR C	BLUE
SECTOR D	YELLOW
SECTOR E	WHITE
SECTOR F	PURPLE
LMU	BROWN + SECTOR COLOR BANDS (1 & 2)
FIBER ID	GRAY
UNUSED COAX	PINK
MICROWAVE	ORANGE
DWE T-1'S + GPS DOWNLINK CABLE	ID W/LABEL MAKER

- ANTENNA AND COAXIAL CABLE SCHEDULE:**
- ALL ANTENNAS SHALL BE FURNISHED WITH DOWNTILT BRACKETS. CONTRACTOR SHALL COORDINATE REQUIRED MECHANICAL DOWNTILT FOR EACH ANTENNA WITH RF ENGINEER. ANTENNA DOWNTILT SHALL BE SET AND VERIFIED BY A SMART LEVEL.
 - CONTRACTOR SHALL INSTALL COLOR CODE RINGS ON EACH OF THE HYBRID CABLES AND JUMPER CABLES w/ UV RESISTANT TAPE. ALL CABLES SHALL BE MARKED AT THE TOP AND BOTTOM w/ 2" COLOR TAPE OR STENCIL TAG.

FRONT OF THE ANTENNA



EXAMPLE: COAX w/ FOUR BANDS OF RED TAPE WILL REPRESENT ALPHA SECTOR AND THE 4TH PORT OF THE ANTENNA

TAGGING COLOR & NOTES

SCALE: N.T.S.

2

T-Mobile



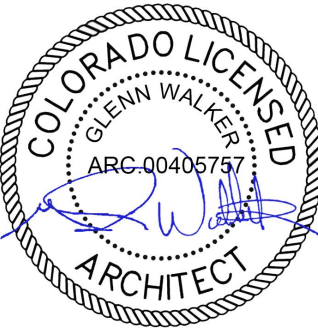
AMERICAN TOWER®



POWDER RIVER
Development Services, LLC

BUSINESS LICENSE #: N/A

REVISIONS			
REV	DATE	DESCRIPTION	INT
4	06/02/21	REVISIONS	JHT
3	06/02/21	REVISIONS	JHT
2	07/05/19	REVISIONS	KS
1	05/16/19	REVISIONS	DLD
0	05/02/19	100% CONSTRUCTION	SAM
A	04/19/19	ISSUED FOR REVIEW 90%	JPN



THESE PLANS AND SPECIFICATIONS, AS INSTRUMENTS OF SERVICE, ARE AND SHALL REMAIN THE PROPERTY OF POWDER RIVER DEVELOPMENT SERVICES, LLC WHETHER THE PROJECTS FOR WHICH THEY ARE MADE ARE EXECUTED OR NOT. THESE DRAWINGS AND SPECIFICATIONS SHALL NOT BE USED BY ANY PERSON OR ENTITY ON OTHER PROJECTS WITHOUT PRIOR WRITTEN CONSENT OF THE ENGINEER.

SITE INFORMATION

T-MOBILE #: DN04253A

ATC #: 383496

15739 PHANTOM CANYON VIEW
COLORADO SPRINGS, CO
80926

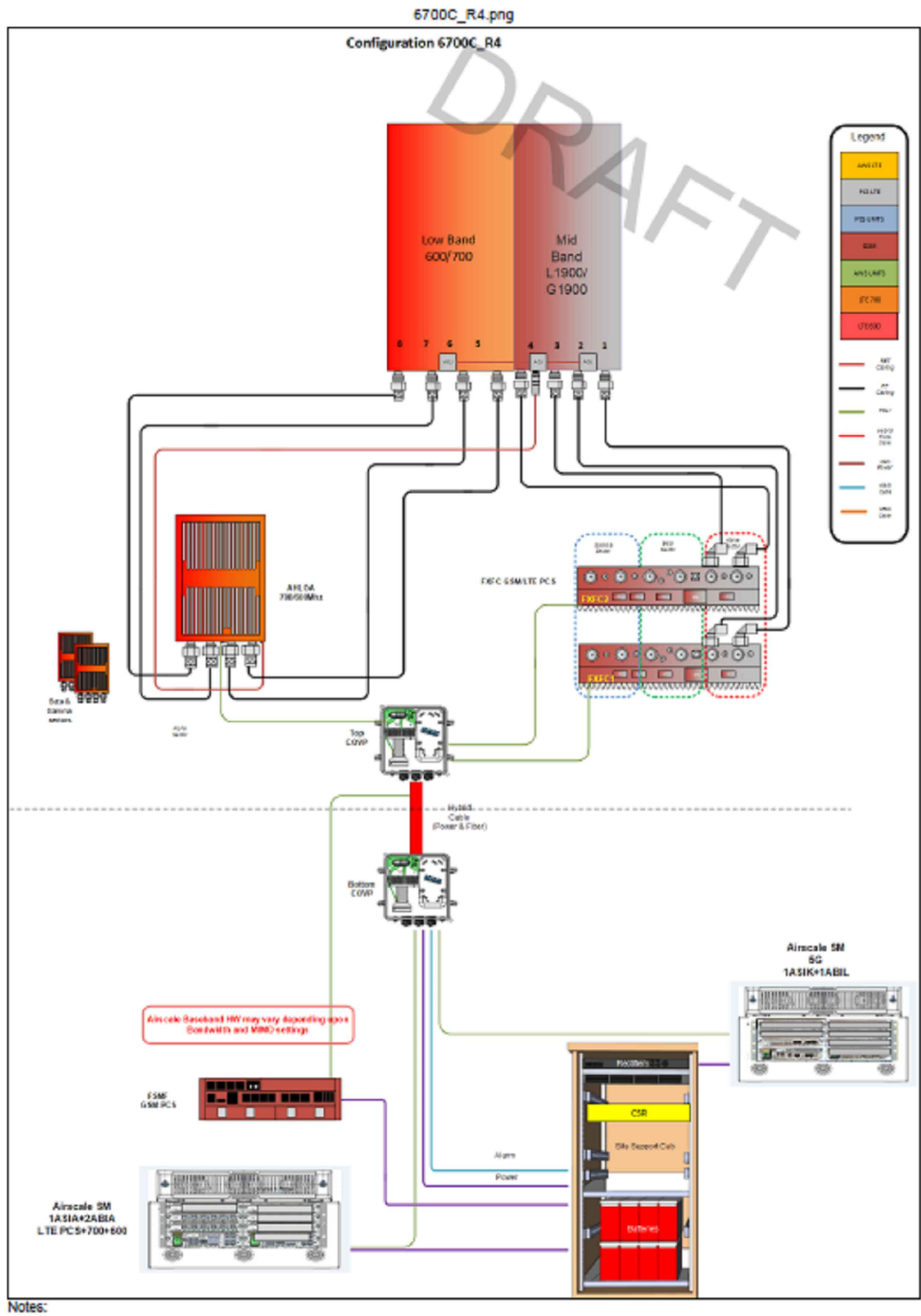
SHEET TITLE:

ANTENNA &
CABLE SCHEDULE

SHEET NUMBER:

C-3.1

Section 3 - Proposed Template Images

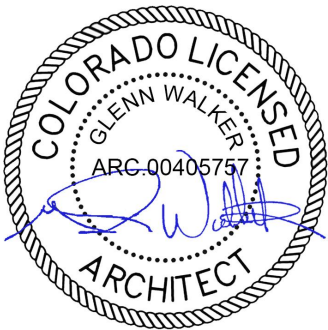


T-Mobile



BUSINESS LICENSE #: N/A

REVISIONS			
REV	DATE	DESCRIPTION	INT
4	06/02/21	REVISIONS	JHT
3	06/02/21	REVISIONS	JHT
2	07/05/19	REVISIONS	KS
1	05/16/19	REVISIONS	DLD
0	05/02/19	100% CONSTRUCTION	SAM
A	04/19/19	ISSUED FOR REVIEW 90%	JPN



06/18/2021

THESE PLANS AND SPECIFICATIONS, AS INSTRUMENTS OF SERVICE, ARE AND SHALL REMAIN THE PROPERTY OF POWDER RIVER DEVELOPMENT SERVICES, LLC. WHETHER THE PROJECTS FOR WHICH THEY ARE MADE ARE EXECUTED OR NOT, THESE DRAWINGS AND SPECIFICATIONS SHALL NOT BE USED BY ANY PERSON OR ENTITY ON OTHER PROJECTS WITHOUT PRIOR WRITTEN CONSENT OF THE ENGINEER.

SITE INFORMATION

T-MOBILE #: DN04253A

ATC #: 383496

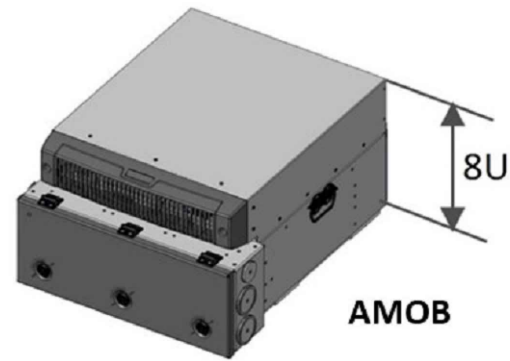
15739 PHANTOM CANYON VIEW
COLORADO SPRINGS, CO
80926

SHEET TITLE:

RFDS DIAGRAM

SHEET NUMBER:

C-3.2



AMOB is an outdoor enclosure for the AirScale Baseband cards (ASIA/ABIA) . The AMOB is primary for all outdoor sites.

- It is 8U high and a 19" Rack Mount

AMOB Mounting Options				
Item Description	FCOA	Wall/ H-Frame	Pole	Stack with Flex*
Blank panels kit for AMOB**	✓	✓	✓	✓
FCOA installation kit	✓			
Cable glands**	✓	✓	✓	✓
Stack/Wall/Pole installation kit		✓	✓	✓
FPKA			✓	
FMFA		✓	✓	



AHLOA: 600MHz/700MHz Radio (4Tx4Rx RRH)

Specification	
Configuration	4T4R Dual Band
Output Power	4x30W
1BW/OBW	Full Band/Full Band
PIM Cancellation	Yes (Multi Band)
Power Sharing	Yes
Weight	83.7 lbs with no covers & brackets
Size	Approx 32.6L
Dimensions	560 mm x 308 mm x 189 mm
Connector	4.3-10+ (4 ports)

AHLOA

- Based on Airscale Platform
- Tower installation only (No Ground installation)
- License requirement for MIMO Functions and Dual Band
- Utilizes 4.3-10 RF Connector
- CPRI fiber front haul
- Product expected Q2 2018



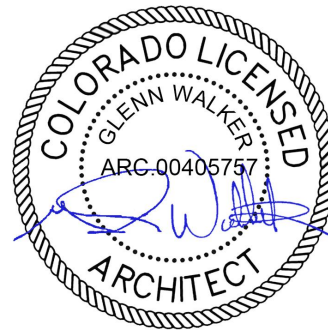
MANUFACTURER: COMMScope
MODEL: FFHH-65C-R3
WEIGHT: 127.6 LBS
DIMENSIONS: HxWxD: 95.9" x 25.2" x 9.3"
FREQUENCY: 617MHz-806 MHz
1695-2360 MHz
CONNECTION: (8) 4.3-10 FEMALE

T-Mobile



BUSINESS LICENSE #: N/A

REVISIONS			
REV	DATE	DESCRIPTION	INT
4	06/02/21	REVISIONS	JHT
3	06/02/21	REVISIONS	JHT
2	07/05/19	REVISIONS	KS
1	05/16/19	REVISIONS	DLD
0	05/02/19	100% CONSTRUCTION	SAM
A	04/19/19	ISSUED FOR REVIEW 90%	JPN



THESE PLANS AND SPECIFICATIONS, AS INSTRUMENTS OF SERVICE, ARE AND SHALL REMAIN THE PROPERTY OF POWDER RIVER DEVELOPMENT SERVICES, LLC. WHETHER THE PROJECTS FOR WHICH THEY ARE MADE ARE EXECUTED OR NOT. THESE DRAWINGS AND SPECIFICATIONS SHALL NOT BE USED BY ANY PERSON OR ENTITY ON OTHER PROJECTS WITHOUT PRIOR WRITTEN CONSENT OF THE ENGINEER.

SITE INFORMATION

T-MOBILE #: DN04253A

ATC #: 383496

15739 PHANTOM CANYON VIEW
COLORADO SPRINGS, CO
80926

SHEET TITLE:

EQUIPMENT
DETAILS

SHEET NUMBER:

C-4

AMOB DETAIL

SCALE: N.T.S.

5

RADIO INFORMATION

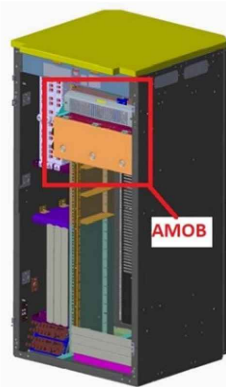
SCALE: N.T.S.

3

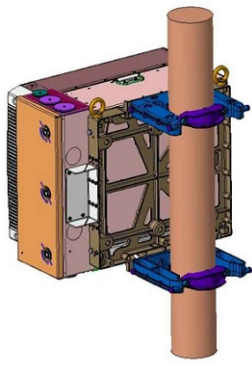
ANTENNA INFORMATION

SCALE: N.T.S.

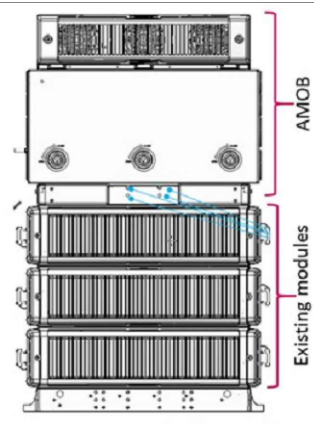
1



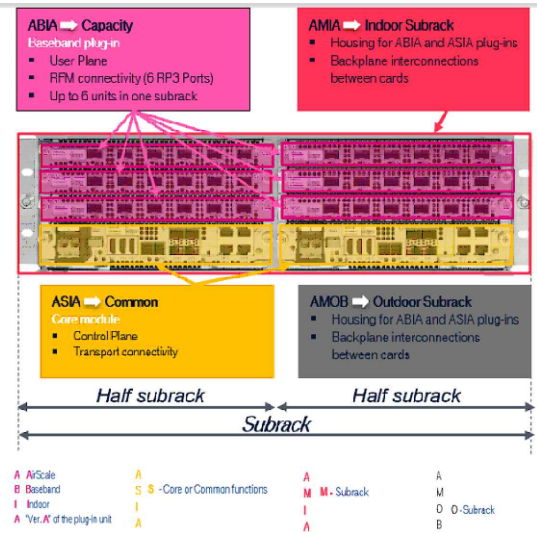
AMOB/FCOA install



AMOB Pole Install



AMOB Stacked Install



A AirScale
B Baseband
I Indoor
A *Ver. A of the plug-in unit

A S B - Core or Common functions
I A

A M - Subrack
I A

A O - Subrack
B

One Subrack Indoor Maximum configuration :

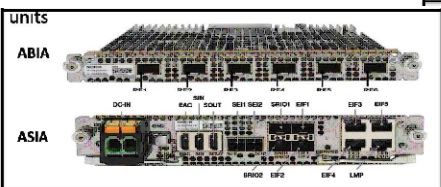
- 6 ABIA + 2 ASIA + 1 AMIA
- IP20 rating (Indoor)

One Subrack Outdoor Maximum configuration :

- 6 ABIA + 2 ASIA + 1 AMOB
- IP65 rating

No boots on ASIA and ABIA fiber/power/Ethernet connectors

NOTE: No power connections for Radio Module



AMOB MOUNTING DETAILS

SCALE: N.T.S.

6

AIRSCALE DETAIL

SCALE: N.T.S.

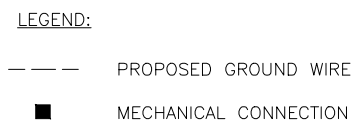
4

ANTENNA ATTACHMENT

SCALE: N.T.S.

2

NOTE: ONLY ONE SECTOR SHOWN FOR CLARITY



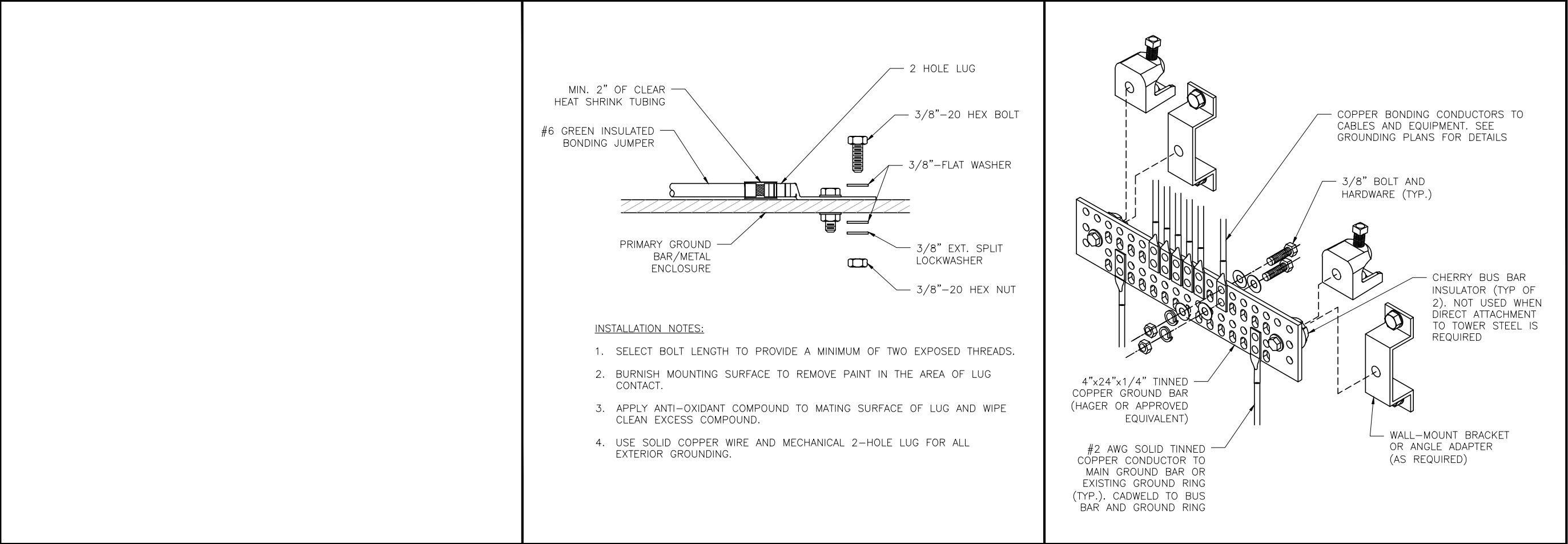
REVISIONS			
REV	DATE	DESCRIPTION	INT
4	06/02/21	REVISIONS	JHT
3	06/02/21	REVISIONS	JHT
2	07/05/19	REVISIONS	KS
1	05/16/19	REVISIONS	DLD
0	05/02/19	100% CONSTRUCTION	SAM
A	04/19/19	ISSUED FOR REVIEW 90%	JPN



THESE PLANS AND SPECIFICATIONS, AS INSTRUMENTS OF SERVICE, ARE AND SHALL REMAIN THE PROPERTY OF POWDER RIVER DEVELOPMENT SERVICES, LLC WHETHER THE PROJECTS FOR WHICH THEY ARE MADE ARE EXECUTED OR NOT. THESE DRAWINGS AND SPECIFICATIONS SHALL NOT BE USED BY ANY PERSON OR ENTITY ON OTHER PROJECTS WITHOUT PRIOR WRITTEN CONSENT OF THE ENGINEER.

G-1

1



NOT USED

5

MECHANICAL GROUND CONNECTION

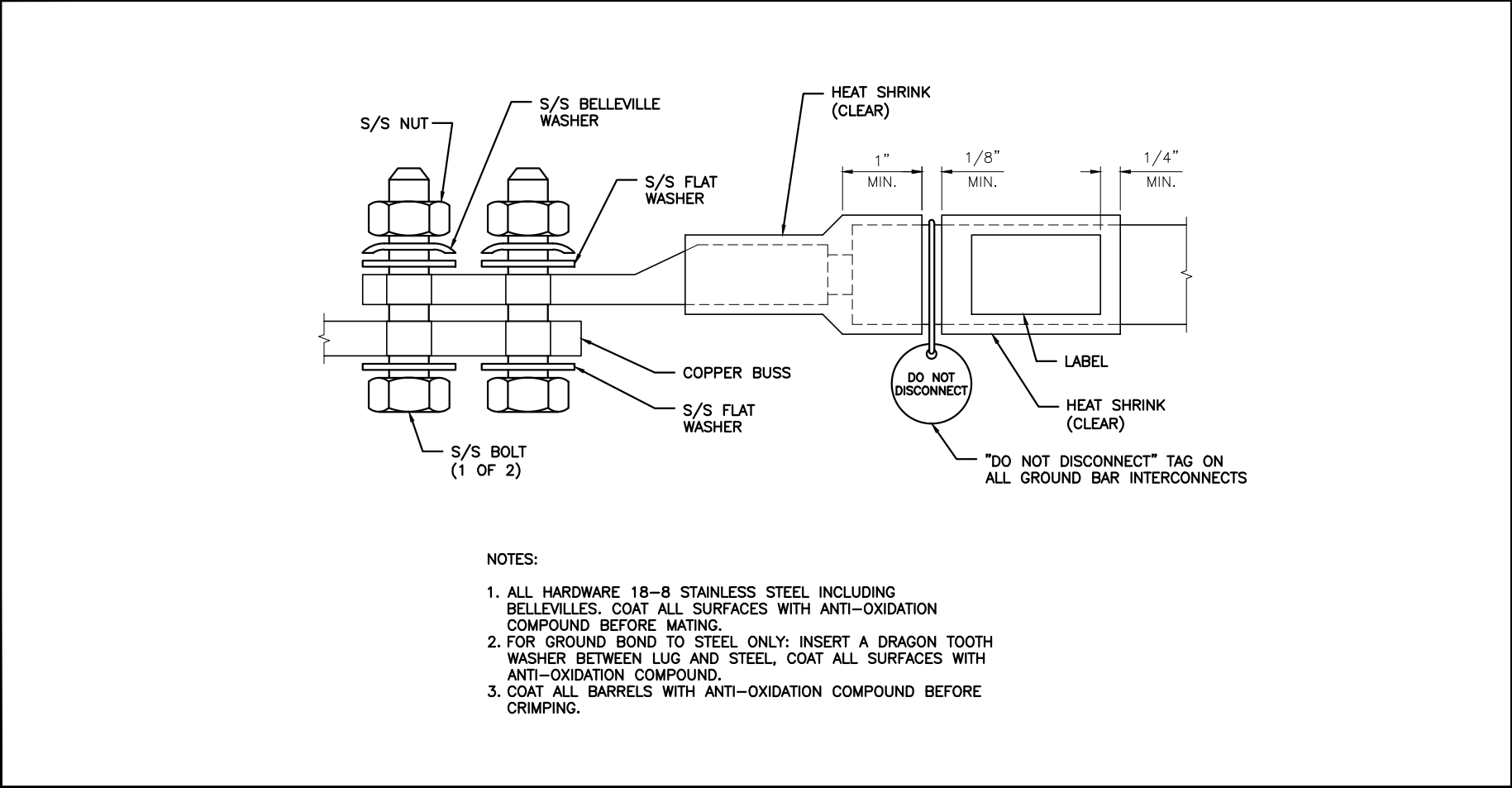
SCALE: N.T.S.

3

GROUND BAR DETAIL

SCALE: N.T.S.

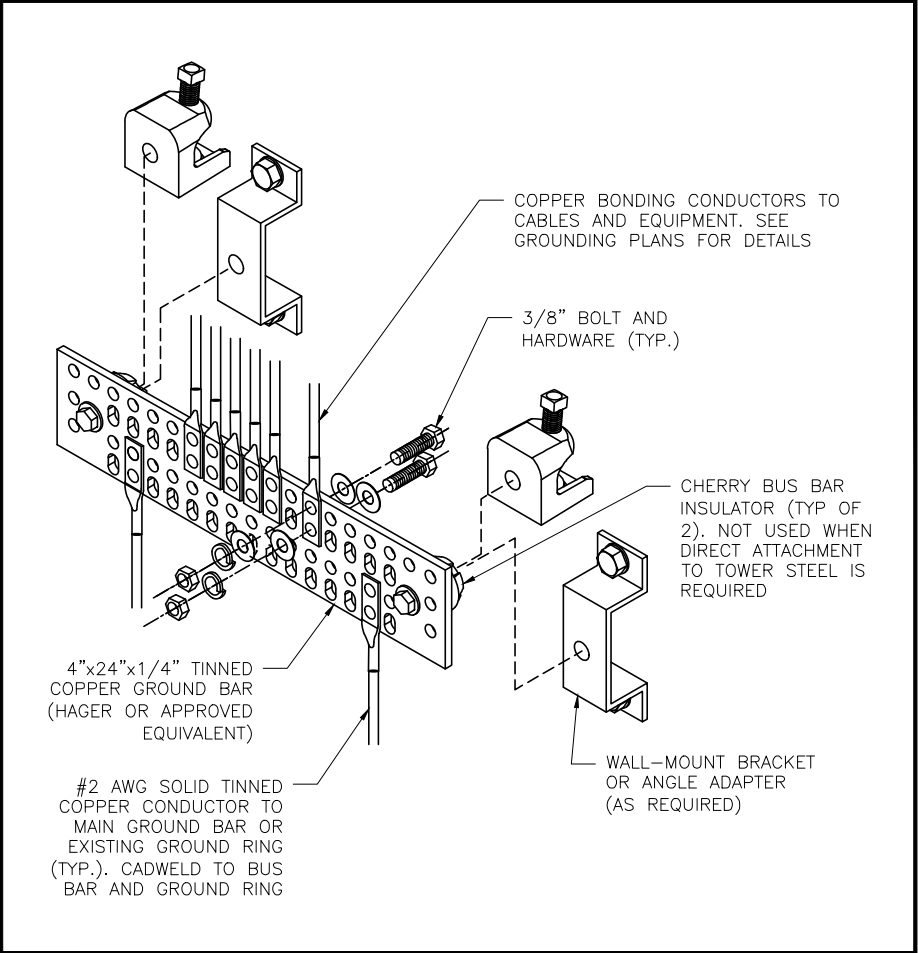
1



GENERAL LUG DETAIL

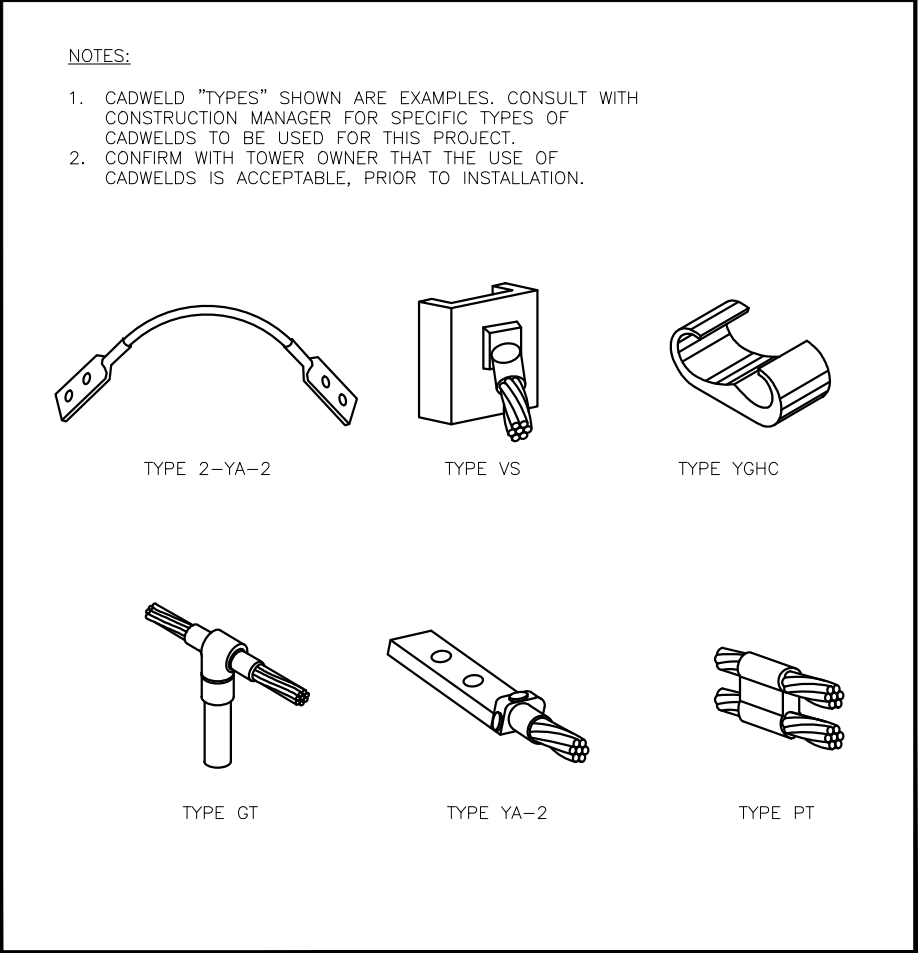
SCALE: N.T.S.

4



SCALE: N.T.S.

1



SCALE: N.T.S.

2

BUSINESS LICENSE #:

N/A

REVISONS

REV	DATE	DESCRIPTION	INT
4	06/02/21	REVISIONS	JHT
3	06/02/21	REVISIONS	JHT
2	07/05/19	REVISIONS	KS
1	05/16/19	REVISIONS	DLD
0	05/02/19	100% CONSTRUCTION	SAM
A	04/19/19	ISSUED FOR REVIEW 90%	JPN

06/18/2021

THESE PLANS AND SPECIFICATIONS, AS INSTRUMENTS OF SERVICE, ARE AND SHALL REMAIN THE PROPERTY OF POWDER RIVER DEVELOPMENT SERVICES, LLC WHETHER THE PROJECTS FOR WHICH THEY ARE MADE ARE EXECUTED OR NOT. THESE DRAWINGS AND SPECIFICATIONS SHALL NOT BE USED BY ANY PERSON OR ENTITY ON OTHER PROJECTS WITHOUT PRIOR WRITTEN CONSENT OF THE ENGINEER.

SITE INFORMATION

T-MOBILE #: DN04253A

ATC #: 383496

15739 PHANTOM CANYON VIEW
COLORADO SPRINGS, CO
80926

SHEET TITLE:

GROUNDING
DETAILS

SHEET NUMBER:

G-2

GENERAL NOTES

1. OWNER FURNISHED MATERIALS, T–MOBILE “THE COMPANY” WILL PROVIDE AND THE CONTRACTOR WILL INSTALL:

A. BTS EQUIPMENT FRAME (PLATFORM) AND ICE BRIDGE SHELTER (GROUND BUILD/CO–LOCATE ONLY)

B. AC/TELCO INTERFACE BOX(PPC)

C. ICE BRIDGE (CABLE TRAY WITH COVER) (GROUND BUILD/CO–LOCATE ONLY, GC TO FURNISH AND INSTALL FOR ROOFTOP INSTALLATION)

D. TOWERS, MONOPOLE

E. TOWER LIGHTNING

F. GENERATORS & LIQUID PROPANE TANK

G. ANTENNA STANDARD BRACKETS, FRAMES AND PIPES FOR MOUNTING

H. ANTENNAS (INSTALLED BY OTHERS)

I. TRANSMISSION LINE

J. TRANSMISSION LINE JUMPERS

K. TRANSMISSION LINE CONNECTORS WITH WEATHERPROOFING KITS

L. TRANSMISSION LINE GROUND KITS

M. HANGERS

N. HOISTING CLIPS

O. BTS EQUIPMENT
2. CONTRACTOR TO FURNISH AND INSTALL THE FOLLOWING:

THE CONTRACTOR IS RESPONSIBLE TO PROVIDE ALL OTHER MATERIALS FOR THE COMPLETE INSTALLATION OF THE SITE INCLUDING, BUT NOT LIMITED TO, SUCH MATERIALS AS FENCING, STRUCTURAL STEEL SUPPORTING SUB–FRAME FOR PLATFORM, ROOFING LABOR AND MATERIALS, GROUNDING RINGS, GROUNDING WIRES, COPPER–CLAD OR XIT CHEMICAL GROUND ROD(S), BUSS BARS, TRANSFORMERS AND DISCONNECT SWITCHES WHERE APPLICABLE, TEMPORARY ELECTRICAL POWER, CONDUIT, LANDSCAPING COMPOUND STONE, CRANES, CORE DRILLING, SLEEPERS AND RUBBER MATTING, REBAR, CONCRETE CAISSONS, PADS AND/OR AUGER MOUNTS, MISCELLANEOUS FASTENERS, CABLE TRAYS, NON–STANDARD ANTENNA FRAMES AND ALL OTHER MATERIAL AND LABOR REQUIRED TO COMPLETE THE JOB ACCORDING TO THE DRAWINGS AND SPECIFICATIONS.

IT IS THE POSITION OF T–MOBILE TO APPLY FOR PERMITTING AND CONTRACTOR RESPONSIBLE FOR PICKUP AND PAYMENT OF REQUIRED PERMITS.
3. T–MOBILE FURNISHED EQUIPMENT SHALL BE PICKED–UP AT THE T–MOBILE WAREHOUSE, NO LATER THAN 48HR AFTER BEING NOTIFIED INSURED,STORED, UNCRATED, PROTECTED AND INSTALLED BY THE CONTRACTOR WITH ALL APPURTENCES REQUIRED TO PLACE THE EQUIPMENT IN OPERATION, READY TO USE. THE CONTRACTOR SHALL BE RESPONSIBLE FOR THE EQUIPMENT AFTER PICKING UP.
4. ALL EQUIPMENT FURNISHED AND WORK PERFORMED UNDER THE CONTRACT DOCUMENTS SHALL BE GUARANTEED AGAINST DEFECTS IN MATERIALS OR WORKMANSHIP FOR A PERIOD OF ONE (1) YEAR FROM THE DATE OF FINAL ACCEPTANCE, UNLESS NOTED OTHERWISE. ANY FAILURE OF EQUIPMENT OR WORK DUE TO DEFECTS IN MATERIALS OR WORKMANSHIP SHALL BE CORRECTED BY THE CONTRACTOR AT NO COST TO THE OWNER.
5. ALL WORK, MATERIAL AND EQUIPMENT SHALL COMPLY WITH ALL REQUIREMENTS OF THE LATEST EDITION AND INTERIM AMENDMENTS OF THE INTERNATIONAL BUILDING CODE, THE NATIONAL ELECTRICAL CODE (NEC), NATIONAL ELECTRIC SAFETY CODE, OSHA AND ALL APPLICABLE FEDERAL, STATE AND LOCAL LAWS AND ORDINANCES. ALL ELECTRICAL EQUIPMENT PROVIDED UNDER THIS CONTRACT SHALL BE NEW (EXCEPT WHERE OTHERWISE NOTED) AND SHALL COMPLY WITH THE REQUIREMENTS OF THE UNDERWRITERS’ LABORATORIES (U.L.) AND BEAR THE U.L. LABEL.
6. T–MOBILE OR HIS ARCHITECT/ENGINEER RESERVES THE RIGHT TO REJECT ANY EQUIPMENT OR MATERIALS WHICH, IN HIS OPINION ARE NOT IN COMPLIANCE WITH THE CONTRACT DOCUMENTS, EITHER BEFORE OR AFTER INSTALLATION AND THE EQUIPMENT SHALL BE REPLACED WITH EQUIPMENT CONFORMING TO THE REQUIREMENTS OF THE CONTRACT DOCUMENTS BY THE CONTRACTOR AT NO COST TO THE OWNER OR HIS ARCHITECT/ENGINEER.
7. THE CONSTRUCTION DRAWINGS AND SPECIFICATIONS REPRESENT THE FINISHED STRUCTURE AND DO NOT INDICATE THE METHOD OF CONSTRUCTION. THE CONTRACTOR SHALL SUPERVISE AND DIRECT THE WORK AND SHALL BE SOLELY RESPONSIBLE FOR CONSTRUCTION MEANS, METHODS, TECHNIQUES, SEQUENCES AND PROCEDURES, INCLUDING BUT NOT LIMITED TO BRACING, TEMPORARY SUPPORTS AND SHORING. OBSERVATION VISITS TO THE SITE BY FIELD REPRESENTATIVES OF THE ENGINEER SHALL NOT INCLUDE INSPECTIONS OF THE PROTECTIVE MEASURES OR THE CONSTRUCTION PROCEDURES. ANY SUPPORT SERVICES PERFORMED BY THE ENGINEER DURING THE CONSTRUCTION SHALL BE DISTINGUISHED FROM CONSTRUCTION AND DETAILED INSPECTION SERVICES WHICH ARE FURNISHED BY OTHERS. THESE SUPPORT SERVICES PERFORMED BY THE ENGINEER, WHETHER OF MATERIAL OR WORK, ARE FOR THE PURPOSE OF ASSISTING IN QUALITY CONTROL AND IN ACHIEVING CONFORMANCE WITH CONTRACT DOCUMENTS, BUT DO NOT GUARANTEE CONTRACTORS PERFORMANCE AND SHALL NOT BE CONSTRUED AS SUPERVISION OF CONSTRUCTION. CONTRACTOR SHALL TAKE NECESSARY PRECAUTIONS TO MAINTAIN AND ENSURE THE INTEGRITY OF THE STRUCTURE DURING CONSTRUCTION. NEITHER THE OWNER NOR ENGINEER WILL ENFORCE SAFETY MEASURES OR REGULATIONS. CONTRACTOR SHALL DESIGN, CONSTRUCT AND MAINTAIN ALL SAFETY DEVICES, INCLUDING SHORING AND BRACING, AND SHALL BE SOLELY RESPONSIBLE FOR CONFORMING TO ALL LOCAL, STATE AND FEDERAL SAFETY AND HEALTH STANDARDS, LAWS AND REGULATIONS.
8. FIELD VERIFY ALL EXISTING DIMENSIONS THAT EFFECT THE NEW CONSTRUCTION. OMISSIONS OR CONFLICTS BETWEEN THE VARIOUS ELEMENTS OF THE WORKING DRAWINGS AND/OR SPECIFICATIONS SHALL BE BROUGHT TO THE ATTENTION OF THE ENGINEER PRIOR TO PROCEEDING WITH ANY WORK INVOLVED. ALL INFORMATION SHOWN ON THE DRAWINGS RELATIVE TO EXISTING CONDITIONS IS GIVEN AS THE BEST PRESENT KNOWLEDGE, BUT WITHOUT GUARANTEE OF ACCURACY. WHERE ACTUAL CONDITIONS CONFLICT WITH THE DRAWINGS, THEY SHALL BE REPORTED TO THE ENGINEER SO THAT THE PROPER REVISION MAY BE MADE. MODIFICATIONS OF CONSTRUCTION DETAILS SHALL NOT BE MADE WITHOUT THE WRITTEN APPROVAL OF THE ENGINEER.
9. THE CONTRACTOR SHALL NOT ALLOW OR CAUSE ANY OF THE WORK TO BE COVERED UP OR ENCLOSED UNTIL IT HAS BEEN INSPECTED BY THE GOVERNING AUTHORITIES. ANY WORK THAT IS ENCLOSED OR COVERED UP BEFORE SUCH INSPECTION AND TEST SHALL BE UNCOVERED AT THE CONTRACTOR’S EXPENSE; AFTER IT HAS BEEN

INSPECTED, THE CONTRACTOR SHALL RESTORE THE WORK TO ITS ORIGINAL CONDITION AT HIS OWN EXPENSE.

10. ALL EXISTING UTILITIES, FACILITIES, CONDITIONS AND THEIR DIMENSIONS SHOWN ON PLANS HAVE BEEN PLOTTED FROM AVAILABLE RECORDS. THE ARCHITECT/ENGINEER AND OWNER (T–MOBILE) ASSUME NO RESPONSIBILITY WHATEVER AS TO THE SFOFICIENCY OR ACCURACY OF THE INFORMATION SHOWN ON THE PLANS OR THE MANNER OF THEIR REMOVAL OR ADJUSTMENT. CONTRACTOR SHALL BE RESPONSIBLE FOR THE DETERMINING EXACT LOCATION OF ALL SAID UTILITIES AND FACILITIES PRIOR TO START OF CONSTRUCTION. CONTRACTOR SHALL ALSO OBTAIN FROM EACH UTILITY COMPANY DETAILED INFORMATION RELATIVE TO WORKING SCHEDULES AND METHODS OF REMOVING OR ADJUSTING AFFECTED UTILITIES.
11. CONTRACTOR SHALL FIELD VERIFY ALL EXISTING UTILITIES BOTH HORIZONTALLY AND VERTICALLY PRIOR TO START OF CONSTRUCTION. ANY DISCREPANCIES OR DOUBTS AS TO THE INTERPRETATION OF PLANS SHOULD BE IMMEDIATELY REPORTED TO THE PROJECT MANAGER FOR RESOLUTION AND INSTRUCTION, AND NO FURTHER WORK SHALL BE PREFORMED UNTIL DISCREPANCY IS CHECKED AND CORRECTED BY THE ARCHITECT/ENGINEER. FAILURE TO SECURE SUCH INSTRUCTION MEANS CONTRACTOR WILL HAVE WORKED AT HIS OWN RISK AND EXPENSE.
12. CONTRACTORS SHALL CLEAN ENTIRE SITE AFTER CONSTRUCTION SUCH THAT NO PAPERS, TRASH, DEBRIS, WEEDS, BRUSH OR ANY OTHERS DEPOSITS REMAIN. ALL MATERIALS COLLECTED DURING CLEANING OPERATIONS SHALL BE PROPERLY DISPOSED OF OFF–SITE BY THE CONTRACTOR.
13. ALL SITE WORK SHALL BE CAREFULLY COORDINATED BY THE CONTRACTOR WITH LOCAL GAS, ELECTRIC, TELEPHONE AND ANY OTHER UTILITY COMPANIES HAVING JURISDICTION OVER THIS LOCATION.
14. DURING CONSTRUCTION, THE CONTRACTOR SHALL AT ALL TIMES MAINTAIN THE UTILITIES OF THE BUILDING/SITE WITHOUT INTERRUPTION. SHOULD IT BE NECESSARY TO INTERRUPT ANY SERVICE OR UTILITY, THE CONTRACTOR SHALL SECURE PERMISSION IN WRITING FROM THE BUILDING/PROPERTY OWNER FOR SUCH INTERRUPTION, AT LEAST 72 HOURS IN ADVANCE. ANY INTERRUPTION SHALL BE MADE WITH A MINIMUM AMOUNT OF INCONVENIENCE TO THE BUILDING/PROPERTY OWNER AND ANY SUCH SHUTDOWN TIME SHALL BE COORDINATED WITH THE BUILDING/PROPERTY OWNER.
15. CONTRACTOR SHALL MINIMIZE DISTURBANCE TO THE EXISTING SITE DURING CONSTRUCTION. EROSION CONTROL MEASURES, IF REQUIRED DURING CONSTRUCTION.
16. CONTRACTOR SHALL SUBMIT AT THE END OF THE PROJECT A COMPLETE SET OF AS BUILT DRAWINGS TO T–MOBILE’S PROJECT ENGINEER.
17. GC WILL NOT START THE CONSTRUCTION UNTIL AFTER THEY RECEIVE THE PRE CON PACKAGE AND HAVE A PRE CON WALK WITH THE PROJECT MANAGER.

DIVISION 2 – SITE WORK

1. THE CONTRACTOR SHALL CALL UTILITIES PRIOR TO THE START OF CONSTRUCTION. ALL EXISTING ACTIVE SEWER, WATER, GAS, ELECTRIC AND OTHER UTILITIES WHERE ENCOUNTERED IN THE WORK SHALL BE PROTECTED AT ALL TIMES AND WHERE REQUIRED FOR THE PROPER EXECUTION OF THE WORK, SHALL BE RELOCATED AS DIRECTED BY THE PROJECT MANAGER. EXTREME CAUTION SHOULD BE USED BY THE CONTRACTOR WHEN EXCAVATING OR PIER DRILLING AROUND OR NEAR UTILITIES. CONTRACTOR SHALL PROVIDE SAFETY TRAINING FOR THE WORKING CREW. THIS WILL INCLUDE BUT NOT LIMITED TO:

A. FALL PROTECTION

B. CONFINED SPACE

C. ELECTRICAL SAFETY

D. TRENCHING AND EXCAVATION
2. REMOVE FROM SITE/OWNER’S PROPERTY ALL WASTE MATERIALS, UNUSED EXCAVATED MATERIAL INCLUDING MATERIAL CLASSIFIED UNSATISFACTORY, CONTAMINATED OR DANGEROUS TRASH AND DEBRIS, AND DISPOSE OF IN A LEGAL MANNER.
3. ALL EXISTING INACTIVE SEWER, WATER, GAS, ELECTRIC AND OTHER UTILITIES WHICH INTERFERE WITH THE EXECUTION OF THE WORK SHALL BE REMOVED AND/OR CAPPED, PLUGGED OR OTHERWISE DISCONTINUED AT POINTS WHICH WILL NOT INTERFERE WITH THE EXECUTION OF THE WORK, SUBJECT TO THE APPROVAL OF ENGINEERING.
4. THE AREAS OF THE OWNERS PROPERTY DISTURBED BY THE WORK AND NOT COVERED BY THE BUILDING OR DRIVEWAY, SHALL BE GRADED TO A UNIFORM SLOPE, FERTILIZED, SEEDED AND COVERED WITH MULCH.
5. CONTRACTOR SHALL MINIMIZE DISTURBANCE TO EXISTING SITE DURING CONSTRUCTION. EROSION CONTROL MEASURES, AS REQUIRED DURING CONSTRUCTION.
6. SITE MAINTENANCE AND PROTECTION:

A. PROVIDE ALL NECESSARY JOB SITE MAINTENANCE FROM COMMENCEMENT OF THE WORK UNTIL COMPLETION OF THE CONTRACT.

B. CONTACT THE ONE–CALL UTILITY LOCATION SERVICE PRIOR TO ANY EXCAVATING ACTIVITIES TO HAVE LOCATIONS OF UNDERGROUND UTILITIES VERIFIED.

C. AVOID DAMAGE TO THE SITE INCLUDING EXISTING FACILITIES, STRUCTURES, TREES AND SHRUBS DESIGNATED TO REMAIN. TAKE PROTECTIVE MEASURES TO PREVENT EXISTING ITEMS THAT ARE NOT DESIGNATED FOR REMOVAL FROM BEING DAMAGED BY THE WORK.

D. KEEP SITE FREE OF ALL PONDING WATER.

E. CONTRACTOR SHALL PROVIDE ALL EROSION AND SEDIMENTATION CONTROL MEASURES AS REQUIRED BY LOCAL, CITY, COUNTY AND STATE CODES AND ORDINANCES TO PROTECT EMBANKMENTS FROM SOIL LOSS AND TO PREVENT ACCUMULATION OF SOIL AND SILT IN STREAMS AND DRAINAGE PATHS LEAVING THE CONSTRUCTION AREA. THIS MAY INCLUDE SUCH MEASURES AS SILT FENCES, STRAW BALE SEDIMENT BARRIERS AND CHECK DAMS.

F. PROVIDE AND MAINTAIN ALL TEMPORARY FENCING, BARRICADES, WARNING SIGNALS AND SIMILAR DEVICES NECESSARY TO PROTECT LIFE AND PROPERTY DURING THE ENTIRE PERIOD OF CONSTRUCTION. REMOVE ALL SUCH DEVICES UPON COMPLETION OF THE WORK.
7. BEFORE STARTING GENERAL SITE PREPARATION ACTIVITIES, INSTALL EROSION AND SEDIMENT CONTROL MEASURES. THE WORK AREA SHALL BE CONSTRUCTED AND MAINTAINED IN SUCH CONDITION THAT IN THE EVENT OF RAIN THE SITE WILL BE WELL DRAINED AT ALL TIMES.
8. CONTRACTOR SHALL BE RESPONSIBLE FOR LAYOUT AND CONSTRUCTION STAKING. CONTRACTOR SHALL ESTABLISH GRADE AND LINE STAKES PRIOR TO CONSTRUCTION.
9. POWDER RIVER DEVELOPMENT SERVICES, LLC DOES NOT GUARANTEE OR WARRANT THAT THE AFOREMENTIONED EASMENTS ARE SUFFICIENT FOR CONSTRUCTION TRAFFIC. GC SHALL CONSULT WITH A T–MOBILE REPRESENTATIVE AND LANDLORD WITH EXACT LOGISTICS TO FACILITATE CONTRACTIBILITY OF THE SITE AND DELIVERY OF CRITICAL MATERIALS SUCH AS THE TOWER, STEEL, CONCRETE AND CRANES TO THE PROPOSED LEASE AREA. GC SHALL RESTORE SITE TO ORIGINAL CONDITIONS AND REPLACE ANY AND ALL DISTURBED TREES OR LANDSCAPING.
10. POWDER RIVER DEVELOPMENT SERVICES, LLC IS NOT RESPONSIBLE FOR THE MAINTENANCE AND/OR OPERATIONAL FEASIBILITY.
11. SCOPE OF WORK FOR THESE PLANS DOES NOT INVOLVE VALUE ENGINEERING AS WELL AS MAINTAINABILITY OPERATIONS OF THE SITE, ACCESS OR UTILITIES

ELECTRICAL NOTES

1. ELECTRICAL DESIGN SHALL BE PROVIDED BY ELECTRICAL CONTRACTOR. STRUCTURAL DESIGN SHALL BE PROVIDED BY GENERAL CONTRACTOR. ELECTRICAL CONTRACTOR SHALL ENSURE THAT ALL WORK COMPLIES WITH APPLICABLE LOCAL AND STATE CODES AND NATIONAL ELECTRICAL CODE.
2. ALL SUGGESTED ELECTRICAL ELEMENTS (SUCH AS BREAKER SIZES, WIRE SIZES, CONDUIT SIZES, ETC.) ARE FOR ZONING PURPOSES ONLY. IT IS THE RESPONSIBILITY OF THE ELECTRICAL CONTRACTOR TO CONFIRM COMPLIANCE WITH LOCAL ELECTRICAL CODES AND PASS ALL APPLICABLE AND NECESSARY INSPECTIONS. IN SOME EVENTS, IT MAY BE NECESSARY TO PERFORM AN ELECTRICAL LOAD STUDY TO VERIFY THE CAPACITY OF THE EXISTING SERVICE. THIS IS NOT THE RESPONSIBILITY OF POWDER RIVER DEVELOPMENT SERVICES, LLC. THIS IS THE RESPONSIBILITY OF THE ELECTRICAL CONTRACTOR.
3. CONTRACTOR SHALL FIELD LOCATE ALL BELOW GRADE GROUND LINES AND UTILITY LINES PRIOR TO CONSTRUCTION. CONTRACTOR IS RESPONSIBLE FOR RELOCATION OF ALL UTILITIES AND GROUND LINES THAT MAY BECOME DISTURBED OR CONFLICTING IN THE COURSE OF CONSTRUCTION.

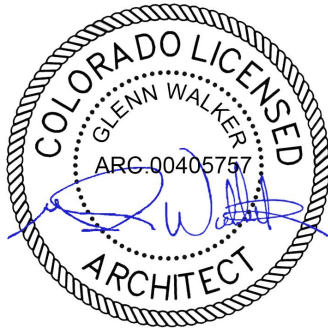
T-Mobile



POWDER RIVER
Development Services, LLC

BUSINESS LICENSE #: N/A

REVISIONS			
REV	DATE	DESCRIPTION	INT
4	06/02/21	REVISIONS	JHT
3	06/02/21	REVISIONS	JHT
2	07/05/19	REVISIONS	KS
1	05/16/19	REVISIONS	DLD
0	05/02/19	100% CONSTRUCTION	SAM
A	04/19/19	ISSUED FOR REVIEW 90%	JPN



06/18/2021

THESE PLANS AND SPECIFICATIONS, AS INSTRUMENTS OF SERVICE, ARE AND SHALL REMAIN THE PROPERTY OF POWDER RIVER DEVELOPMENT SERVICES, LLC WHETHER THE PROJECTS FOR WHICH THEY ARE MADE ARE EXECUTED OR NOT. THESE DRAWINGS AND SPECIFICATIONS SHALL NOT BE USED BY ANY PERSON OR ENTITY ON OTHER PROJECTS WITHOUT PRIOR WRITTEN CONSENT OF THE ENGINEER.

SITE INFORMATION

T-MOBILE #: DN04253A

ATC #: 383496

15739 PHANTOM CANYON VIEW
COLORADO SPRINGS, CO
80926

SHEET TITLE:

GENERAL
NOTES

SHEET NUMBER:

GN-1