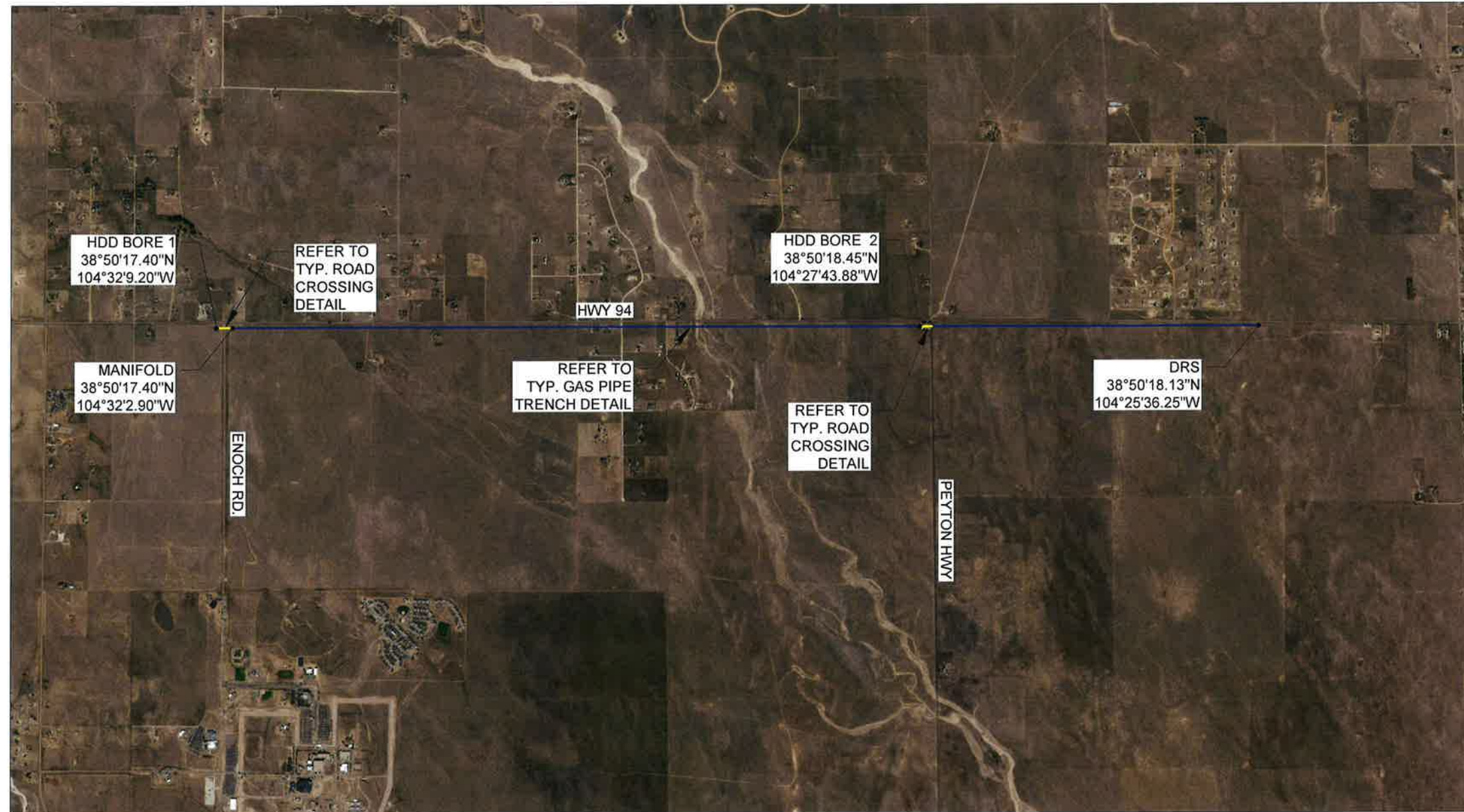


BLACK HILLS ENERGY - HWY 94 ENOCH RD - MAYBERRY

MAYBERRY OVERVIEW



Design Engineer's Statement:

These detailed plans and specifications were prepared under my direction and supervision. Said plans and specifications have been prepared according to the criteria established by the County for detailed roadway, drainage, grading and erosion control plans and specifications, and said plans and specifications are in conformity with applicable master drainage plans and master transportation plans. Said plans and specifications meet the purposes for which the particular roadway and drainage facilities are designed and are correct to the best of my knowledge and belief. I accept responsibility for any liability caused by any negligent acts, errors or omissions on my part in preparation of these detailed plans and specifications.

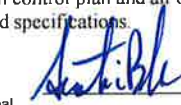
Andrew S. Johnson
[Name, P.E. # 0049573] 06 DEC 2021
Date



Owner/Developer's Statement:

I, the owner/developer have read and will comply with the requirements of the grading and erosion control plan and all of the requirements specified in these detailed plans and specifications.

Austin Belcher
Sr. Environmental Professional
[Name, Title] Signature Date
[Business Name]
[Address]



El Paso County:

County plan review is provided only for general conformance with County Design Criteria. The County is not responsible for the accuracy and adequacy of the design, dimensions, and/or elevations which shall be confirmed at the job site. The County through the approval of this document assumes no responsibility for completeness and/or accuracy of this document.

Filed in accordance with the requirements of the El Paso County Land Development Code, Drainage Criteria Manual, Volumes 1 and 2, and Engineering Criteria Manual as amended.

In accordance with ECM Section 1.12, these construction documents will be valid for construction for a period of 2 years from the date signed by the El Paso County Engineer. If construction has not started within those 2 years, the plans will need to be resubmitted for approval, including payment of review fees at the Planning and Community Development Directors discretion.

VICINITY MAP

NOT TO SCALE

LEGEND:

- PIPE TRENCH CONSTRUCTION METHOD
- PIPE BORE CONSTRUCTION METHOD
- HDD HORIZONTAL DIRECTIONAL DRILLING
- DRS DISTRIBUTION REGULATOR STATION

APPROVED
Engineering Department
12/29/2021 3:55:19 PM
dsnjikamp
EPC Planning & Community Development Department
Jennifer Irvine, P.E.
County Engineer / ECM Administrator

BILL OF MATERIALS		REVISIONS							Black Hills Energy		MAYBERRY OVERVIEW	
NO.	DESCRIPTION	DATE	BY	CK	APP'VD	WD:	ENR. DR.	SCALE	DATE	EL PASO COUNTY CO		
A	ISSUE FOR REVIEW	12/2021	CML	AJ		2021 CONSTRUCTION		AS SHOWN	10/20/21	VICINITY MAP		
						DESIGNED IN ACCORDANCE WITH TITLE 48-PART 182 OF MINIMUM FEDERAL SAFETY STANDARDS AND EPCIC GUIDE FOR GAS TRANSMISSION AND DISTRIBUTION PIPING SYSTEMS, LATEST EDITION.				PROJECT ENGR ANDREW JOHNSON		
										1 of 1		

CONSTRUCTION NOTES:

1. CONTRACTORS SHALL BE ADVISED OF BHE'S REQUIREMENTS AND BE CONTRACTUALLY OBLIGATED TO COMPLY.
2. THE CONTINUED INTEGRITY OF BHE'S PIPELINES AND THE SAFETY OF ALL INDIVIDUALS IN THE AREA OF PROPOSED WORK NEAR BHE'S FACILITIES ARE OF THE UTMOST IMPORTANCE. THEREFORE, CONTRACTOR MUST MEET WITH BHE REPRESENTATIVES PRIOR TO CONSTRUCTION TO PROVIDE AND RECEIVE NOTIFICATION LISTINGS FOR APPROPRIATE AREA OPERATIONS AND EMERGENCY PERSONNEL. BHE'S ON-SITE REPRESENTATIVE WILL REQUIRE DISCONTINUATION OF ANY WORK THAT, IN THEIR OPINION, ENDANGERS THE OPERATIONS OR SAFETY OF PERSONNEL, PIPELINES OR FACILITIES.
3. THE CONTRACTOR MUST EXPOSE ALL BHE TRANSMISSION AND DISTRIBUTION LINES PRIOR TO CROSSING TO DETERMINE THE EXACT ALIGNMENT AND DEPTH OF THE LINES. A BHE REPRESENTATIVE MUST BE PRESENT. IN THE EVENT OF PARALLEL LINES, ONLY ONE PIPELINE CAN BE EXPOSED AT A TIME.
4. BHE WILL NOT ALLOW PIPELINES TO REMAIN EXPOSED OVERNIGHT WITHOUT CONSENT OF BHE DESIGNATED REPRESENTATIVE. CONTRACTOR MAY BE REQUIRED TO BACKFILL PIPELINES AT THE END OF EACH DAY.
5. A BHE REPRESENTATIVE SHALL DO ALL LINE LOCATING. A BHE REPRESENTATIVE SHALL BE PRESENT FOR HYDRAULIC EXCAVATION. THE USE OF PROBING RODS FOR PIPELINE LOCATING SHALL BE PERFORMED BY BHE REPRESENTATIVES ONLY, TO PREVENT UNNECESSARY DAMAGE TO THE PIPELINE COATING.
6. NOTIFICATION SHALL BE GIVEN TO BHE AT LEAST 72 HOURS BEFORE START OF CONSTRUCTION. A SCHEDULE OF ACTIVITIES FOR THE DURATION OF THE PROJECT MUST BE MADE AVAILABLE AT THAT TIME TO FACILITATE THE SCHEDULING OF BHE'S WORK SITE REPRESENTATIVE. ANY CONTRACTOR SCHEDULE CHANGES SHALL BE PROVIDED TO BLACK HILLS ENERGY IMMEDIATELY.
7. HEAVY EQUIPMENT WILL NOT BE ALLOWED TO OPERATE DIRECTLY OVER BHE PIPELINES OR IN BHE ROW UNLESS WRITTEN APPROVAL IS OBTAINED FROM (COMPANY). HEAVY EQUIPMENT SHALL ONLY BE ALLOWED TO CROSS BHE PIPELINES AT LOCATIONS DESIGNATED BY BLACK HILLS ENERGY. CONTRACTOR SHALL COMPLY WITH ALL PRECAUTIONARY MEASURES REQUIRED BY BHE TO PROTECT ITS PIPELINES. WHEN INCLEMENT WEATHER EXISTS, PROVISIONS MUST BE MADE TO COMPENSATE FOR SOIL DISPLACEMENT DUE TO SUBSIDENCE OF TIRES. EQUIPMENT EXCAVATING WITHIN TEN (10) FEET OF BHE PIPELINES WILL HAVE A PLATE GUARD INSTALLED OVER THE TEETH TO PROTECT THE PIPELINE
8. EXCAVATING OR GRADING WHICH MIGHT RESULT IN EROSION OR WHICH COULD RENDER THE BHE ROW INACCESSIBLE SHALL NOT BE PERMITTED UNLESS THE CONTRACTOR/DEVELOPER/OWNER AGREES TO RESTORE THE AREA TO ITS ORIGINAL CONDITION AND PROVIDE PROTECTION TO BHE'S FACILITY.
9. A BHE REPRESENTATIVE SHALL BE ON-SITE TO MONITOR ANY CONSTRUCTION ACTIVITIES WITHIN TWENTY-FIVE (25) FEET OF A BHE PIPELINE OR ABOVEGROUND APPURTENANCE. THE CONTRACTOR SHALL NOT WORK WITHIN THIS DISTANCE WITHOUT A BHE REPRESENTATIVE BEING ON SITE. ONLY HAND EXCAVATION SHALL BE PERMITTED WITHIN ONE (1) FOOT OF BHE PIPELINES, VALVES AND FITTINGS. HOWEVER, PROCEED WITH EXTREME CAUTION WHEN WITHIN THREE (3) FEET OF THE PIPE.
10. RIPPING IS ONLY ALLOWED WHEN THE POSITION OF THE PIPE IS KNOWN AND NOT WITHIN TEN (10) FEET OF BHE FACILITY UNLESS COMPANY REPRESENTATIVE IS PRESENT.
11. TEMPORARY SUPPORT OF ANY EXPOSED BHE PIPELINE BY CONTRACTOR MAY BE NECESSARY IF REQUIRED BY BHE'S ON-SITE REPRESENTATIVE. BACKFILL BELOW THE EXPOSED LINES AND 12" ABOVE THE LINES SHALL BE REPLACED WITH SAND OR OTHER

SELECTED MATERIAL AS APPROVED BY BHE'S ON-SITE REPRESENTATIVE AND THOROUGHLY COMPACTED IN 12" LIFTS TO 95%/» OF STANDARD PROCTOR DRY DENSITY MINIMUM OR AS APPROVED BY BHE'S ON-SITE REPRESENTATIVE. THIS IS TO ADEQUATELY PROTECT AGAINST STRESSES THAT MAY BE CAUSED BY THE SETTLING OF THE PIPELINE.

12. NO BLASTING SHALL BE ALLOWED WITHIN 1000 FEET OF BHE'S FACILITIES UNLESS BLASTING NOTIFICATION IS GIVEN TO BHE INCLUDING COMPLETE BLASTING PLAN DATA. THE PLAN SHALL BE SEALED BY A LICENSED PE AND SHALL CONTAIN THE COMPANY NAME AND MUST INCLUDE SUPPORTING GEOTECHNICAL DATA, AND THE COMPANY'S LICENSE TO PERFORM THE SPECIFIC ACTIONS OUTLINED. A PRE-BLAST MEETING SHALL BE CONDUCTED BY THE ORGANIZATION RESPONSIBLE FOR BLASTING.
13. BHE SHALL BE INDEMNIFIED AND HELD HARMLESS FROM ANY LOSS, COST OF LIABILITY FOR PERSONAL INJURIES RECEIVED, DEATH CAUSED, OR PROPERTY DAMAGE SUFFERED OR SUSTAINED BY ANY PERSON RESULTING FROM ANY BLASTING OPERATIONS UNDERTAKEN WITHIN 500 FEET OF ITS FACILITIES. THE ORGANIZATION RESPONSIBLE FOR BLASTING SHALL BE LIABLE FOR ANY AND ALL DAMAGES CAUSED TO BHE'S FACILITIES AS A RESULT OF THEIR ACTIVITIES WHETHER OR NOT BHE REPRESENTATIVES ARE PRESENT. BHE SHALL HAVE A SIGNED AND EXECUTED BLASTING INDEMNIFICATION AGREEMENT BEFORE AUTHORIZED PERMISSION TO BLAST CAN BE GIVEN.
14. NO BLASTING SHALL BE ALLOWED WITHIN 300 FEET OF BHE'S FACILITIES UNLESS BLASTING NOTIFICATION IS GIVEN TO BHE A MINIMUM OF ONE WEEK BEFORE BLASTING. (NOTE: COVERED ABOVE) A WRITTEN BLASTING PLAN SHALL BE PROVIDED BY THE ORGANIZATION RESPONSIBLE FOR BLASTING AND AGREED TO IN WRITING BY BHE IN ADDITION TO MEETING REQUIREMENTS FOR 500' AND 1000' BEING MET ABOVE. A WRITTEN EMERGENCY PLAN SHALL BE PROVIDED BY THE ORGANIZATION RESPONSIBLE FOR BLASTING. (NOTE: COVERED ABOVE)
15. ANY CONTACT WITH ANY BHE FACILITY, PIPELINE, VALVE SET, ETC. SHALL BE REPORTED IMMEDIATELY TO BHE. IF REPAIRS TO THE PIPE ARE NECESSARY, THEY WILL BE MADE AND INSPECTED BEFORE THE SECTION IS RE-COATED AND THE LINE IS BACK-FILLED.
16. CROSSING ENTITY(S) WILL BE SOLELY RESPONSIBLE FOR ANY AND ALL DAMAGE, REPAIRS OR IMPROVEMENTS REQUIRED TO RETURN FACILITIES AND ROW TO ITS ORIGINAL STATE.
17. BHE PERSONNEL SHALL INSTALL ALL TEST LEADS ON BHE FACILITIES.
18. BURNING OF TRASH, BRUSH, ETC. IS NOT PERMITTED WITHIN THE BHE ROW.

STANDARD NOTES FOR EL PASO COUNTY CONSTRUCTION PLANS

1. ALL DRAINAGE AND ROADWAY CONSTRUCTION SHALL MEET THE STANDARDS AND SPECIFICATIONS OF THE CITY OF COLORADO SPRINGS/EL PASO COUNTY DRAINAGE CRITERIA MANUAL, VOLUMES 1 AND 2, AND THE EL PASO COUNTY ENGINEERING CRITERIA MANUAL.
2. CONTRACTOR SHALL BE RESPONSIBLE FOR THE NOTIFICATION AND FIELD NOTIFICATION OF ALL EXISTING UTILITIES, WHETHER SHOWN ON THE PLANS OR NOT, BEFORE BEGINNING CONSTRUCTION. LOCATION OF EXISTING UTILITIES SHALL BE VERIFIED BY THE CONTRACTOR PRIOR TO CONSTRUCTION. CALL 811 TO CONTACT THE UTILITY NOTIFICATION CENTER OF COLORADO (UNCC).
3. CONTRACTOR SHALL KEEP A COPY OF THESE APPROVED PLANS, THE GRADING AND EROSION CONTROL PLAN, THE STORMWATER MANAGEMENT PLAN (SWMP), THE SOILS AND GEOTECHNICAL REPORT, AND THE APPROPRIATE DESIGN AND CONSTRUCTION STANDARDS AND SPECIFICATIONS AT THE JOB SITE AT ALL TIMES,

INCLUDING THE FOLLOWING:

- a. EL PASO COUNTY ENGINEERING CRITERIA MANUAL (ECM)
- b. CITY OF COLORADO SPRINGS/EL PASO COUNTY DRAINAGE CRITERIA MANUAL, VOLUMES 1 AND 2
- c. COLORADO DEPARTMENT OF TRANSPORTATION (CDOT) STANDARD SPECIFICATIONS FOR ROAD AND BRIDGE CONSTRUCTION
- d. CDOT M & S STANDARDS

4. NOTWITHSTANDING ANYTHING DEPICTED IN THESE PLANS IN WORDS OR GRAPHIC REPRESENTATION, ALL DESIGN AND CONSTRUCTION RELATED TO ROADS, STORM DRAINAGE AND EROSION CONTROL SHALL CONFORM TO THE STANDARDS AND REQUIREMENTS OF THE MOST RECENT VERSION OF THE RELEVANT ADOPTED EL PASO COUNTY STANDARDS, INCLUDING THE LAND DEVELOPMENT CODE, THE ENGINEERING CRITERIA MANUAL, THE DRAINAGE CRITERIA MANUAL, AND THE DRAINAGE CRITERIA MANUAL VOLUME 2. ANY DEVIATIONS FROM REGULATIONS AND STANDARDS MUST BE REQUESTED, AND APPROVED, IN WRITING. ANY MODIFICATIONS NECESSARY TO MEET CRITERIA AFTER-THE-FACT WILL BE ENTIRELY THE DEVELOPER'S RESPONSIBILITY TO RECTIFY.
5. IT IS THE DESIGN ENGINEER'S RESPONSIBILITY TO ACCURATELY SHOW EXISTING CONDITIONS, BOTH ONSITE AND OFFSITE, ON THE CONSTRUCTION PLANS. ANY MODIFICATIONS NECESSARY DUE TO CONFLICTS, OMISSIONS, OR CHANGED CONDITIONS WILL BE ENTIRELY THE DEVELOPER'S RESPONSIBILITY TO RECTIFY.
6. CONTRACTOR SHALL SCHEDULE A PRE-CONSTRUCTION MEETING WITH EL PASO COUNTY PLANNING AND COMMUNITY DEVELOPMENT (PCD) - INSPECTIONS, PRIOR TO STARTING CONSTRUCTION.
7. IT IS THE CONTRACTOR'S RESPONSIBILITY TO UNDERSTAND THE REQUIREMENTS OF ALL JURISDICTIONAL AGENCIES AND TO OBTAIN ALL REQUIRED PERMITS, INCLUDING BUT NOT LIMITED TO EL PASO COUNTY EROSION AND STORMWATER QUALITY CONTROL PERMIT (ESQCP), REGIONAL BUILDING FLOODPLAIN DEVELOPMENT PERMIT, U.S. ARMY CORPS OF ENGINEERS-ISSUED 401 AND/OR 404 PERMITS, AND COUNTY AND STATE FUGITIVE DUST PERMITS.
8. CONTRACTOR SHALL NOT DEVIATE FROM THE PLANS WITHOUT FIRST OBTAINING WRITTEN APPROVAL FROM THE DESIGN ENGINEER AND PCD. CONTRACTOR SHALL NOTIFY THE DESIGN ENGINEER IMMEDIATELY UPON DISCOVERY OF ANY ERRORS OR INCONSISTENCIES.
9. ALL STORM DRAIN PIPE SHALL BE CLASS III RCP UNLESS OTHERWISE NOTED AND APPROVED BY PCD.
10. CONTRACTOR SHALL COORDINATE GEOTECHNICAL TESTING PER ECM STANDARDS. PAVEMENT DESIGN SHALL BE APPROVED BY EL PASO COUNTY PCD PRIOR TO PLACEMENT OF CURB AND GUTTER AND PAVEMENT.
11. ALL CONSTRUCTION TRAFFIC MUST ENTER/EXIT THE SITE AT APPROVED CONSTRUCTION ACCESS POINTS.
12. SIGHT VISIBILITY TRIANGLES AS IDENTIFIED IN THE PLANS SHALL BE PROVIDED AT ALL INTERSECTIONS. OBSTRUCTIONS GREATER THAN 18 INCHES ABOVE FLOWLINE ARE NOT ALLOWED WITHIN SIGHT TRIANGLES.
13. SIGNING AND STRIPING SHALL COMPLY WITH EL PASO COUNTY DOT AND MUTCD CRITERIA. [IF APPLICABLE, ADDITIONAL SIGNING AND STRIPING NOTES WILL BE PROVIDED.]
14. CONTRACTOR SHALL OBTAIN ANY PERMITS REQUIRED BY EL PASO COUNTY DOT, INCLUDING WORK WITHIN THE RIGHT-OF-WAY AND SPECIAL TRANSPORT PERMITS.
15. THE LIMITS OF CONSTRUCTION SHALL REMAIN WITHIN THE PROPERTY LINE UNLESS OTHERWISE NOTED. THE OWNER/DEVELOPER SHALL OBTAIN WRITTEN PERMISSION AND EASEMENTS, WHERE REQUIRED, FROM ADJOINING PROPERTY OWNER(S) PRIOR TO ANY OFF-SITE DISTURBANCE, GRADING, OR CONSTRUCTION.

EPC 12/29/21

REFERENCE DRAWINGS / FILES



LOCATION

LATITUDE	LONGITUDE
XXXXXXXXXX	XXXXXXXXXX

DRAWING REVISIONS

NO.	DESCRIPTION	DATE	BY	CHK.	APPR'VD
A	ISSUE FOR REVIEW	12/2021	CML	AJ	

DRAWING APPROVALS

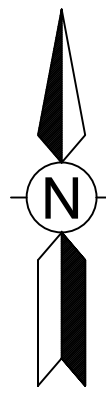
TYPE	DATE	BY
MECHANICAL		
ELECTRICAL		
PROJECT	10/2021	ANDREW JOHNSON
PIPELINE		
DRAFTING		
MEASUREMENT		
FIELD		



GENERAL NOTES

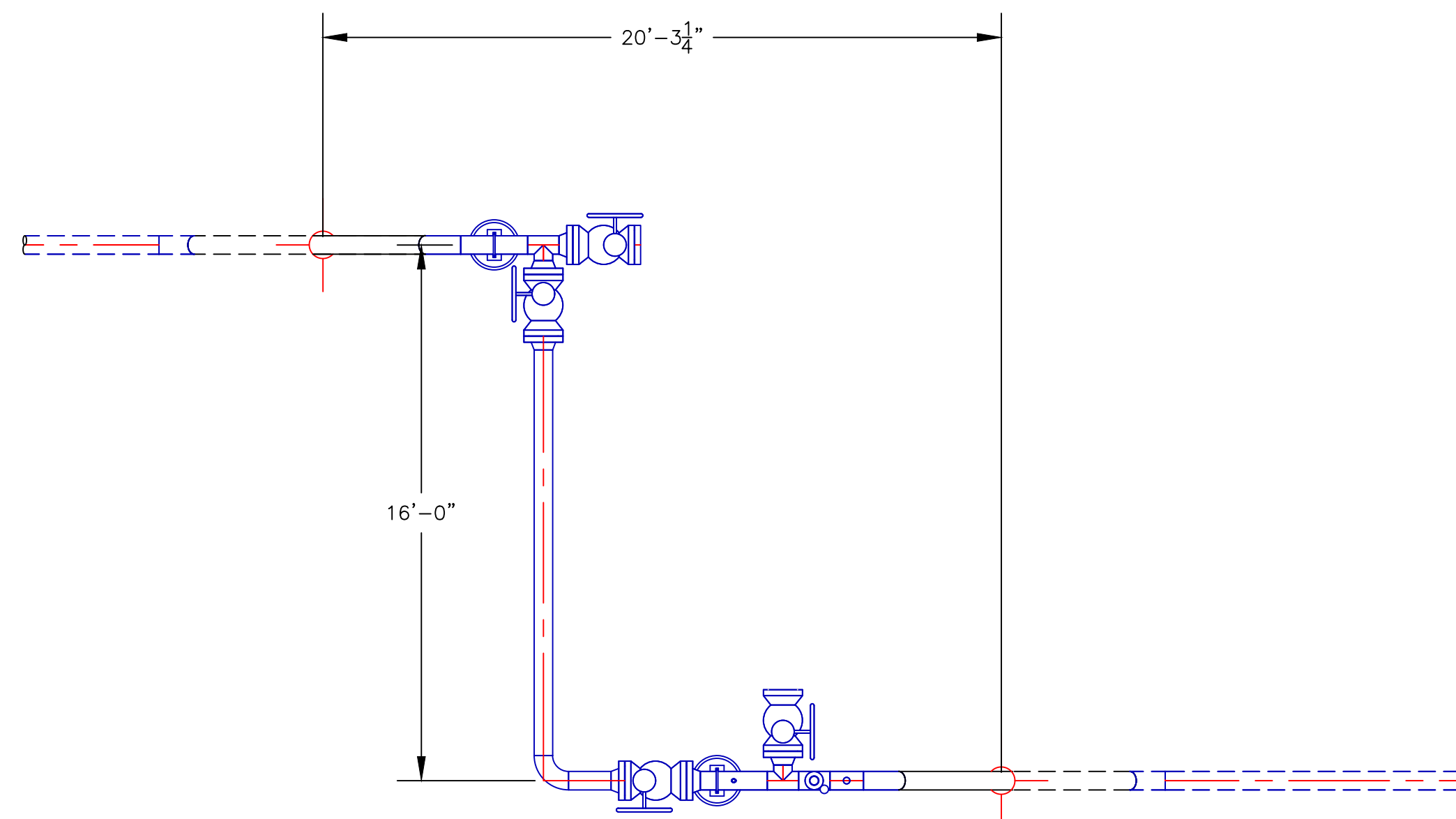
HWY 94-2
 COLORADO SPRINGS, CO
 EL PASO COUNTY

DRAWN BY	DATE	2021 CONSTRUCTION
CML	12/2/2021	
SCALE	CHECKED	DWG. TYPE
AS-NOTED	AJ	PRELIM. X BID FINAL
CADD FILE	W.O. NO.	###
2021 Mayberry General Notes.dwg		
P.N.	SHEET NO.	1 of 1



HIGHWAY 94

ENOCH ROAD



MANIFOLD PLOT PLAN

LEGEND:
 - - - - - HIDDEN LINES

EPC 12/29/21



REFERENCE DRAWINGS / FILES



GENERAL NOTES

NOTES

1. CATHODIC TECHNICIAN TO DETERMINE INSULATING REQUIREMENTS.
2. VALVES INSTALLED IN THE HORIZONTAL POSITION TO HAVE VALVE STEM PLACED IN THE HORIZONTAL POSITION.
3. ALL VALVES EXCEPT NEEDLE VALVES TO HAVE LOCKING DEVICES INSTALLED.
4. OPERATIONS OR CONTRACTOR TO CALL ONECALL OR HAVE EXISTING LINE LOCATED BEFORE DIGGING.
5. INSTALL GUARD RAILS AND FENCE AROUND DRS. IF REQUIRED.
6. WELDER TO HAVE 1104 CERTIFICATION.
7. OPERATIONS PERSONNEL AND/OR CONTRACTOR REQUIRED TO PRESSURE TEST NEW CONSTRUCTION TO MEET MAOP REQUIREMENTS LISTED ON THE DRAWING. OPERATIONS TO RETAIN TEST RECORDS. REFERENCE BHE GAS OPERATIONS AND MAINTENANCE MANUAL SECTION 65.
8. UNDERGROUND PIPE COATING EXTENDS ABOVE GRADE 1'-0" MINIMUM, REFERENCE O&M MANUAL 42 FOR APPROVED ABOVE GRADE COATINGS & AIR/SOIL INTERFACE COATINGS & RESTRICTIONS.

LOCATION

LATITUDE	LONGITUDE
38°50'17.4"N	104°32'02.9"W

DRAWING REVISIONS

NO.	DESCRIPTION	DATE	BY	CK.	APPR'VD
A	ISSUE FOR REVIEW	12/2021	CML	AJ	

DRAWING APPROVALS

TYPE	DATE	BY
MECHANICAL		
ELECTRICAL		
PROJECT	10/2021	ANDREW JOHNSON
PIPELINE		
DRAFTING		
MEASUREMENT	-	-
FIELD	-	-

BH Natural Gas
 Engineering Design
 2287 College Road
 Council Bluffs, IA
 51503
Black Hills Energy

MANIFOLD PLOT PLAN

COLORADO SPRINGS, COLORADO
EL PASO COUNTY

DRAWN BY CML	DATE 10/19/2021	2021 CONSTRUCTION
SCALE AS-NOTED	CHECKED ###	DWG. TYPE PRELIM. X BID FINAL
CADD FILE 2021 Mayberry Plot Plan.dwg	P.N. ###	W.O. NO. ###
		SHEET NO. 1 of 1



GENERAL NOTES

NOTES

1. CATHODIC TECHNICIAN TO DETERMINE INSULATING REQUIREMENTS.
2. VALVES INSTALLED IN THE HORIZONTAL POSITION TO HAVE VALVE STEM PLACED IN THE HORIZONTAL POSITION.
3. ALL VALVES EXCEPT NEEDLE VALVES TO HAVE LOCKING DEVICES INSTALLED.
4. OPERATIONS OR CONTRACTOR TO CALL ONECALL OR HAVE EXISTING LINE LOCATED BEFORE DIGGING.
5. INSTALL GUARD RAILS AND FENCE AROUND DRS. IF REQUIRED.
6. WELDER TO HAVE 1104 CERTIFICATION.
7. OPERATIONS PERSONNEL AND/OR CONTRACTOR REQUIRED TO PRESSURE TEST NEW CONSTRUCTION TO MEET MAOP REQUIREMENTS LISTED ON THE DRAWING. OPERATIONS TO RETAIN TEST RECORDS. REFERENCE BHE GAS OPERATIONS AND MAINTENANCE MANUAL SECTION 65.
8. UNDERGROUND PIPE COATING EXTENDS ABOVE GRADE 1'-0" MINIMUM, REFERENCE O&M MANUAL 42 FOR APPROVED ABOVE GRADE COATINGS & AIR/SOIL INTERFACE COATINGS & RESTRICTIONS.

LOCATION

LATITUDE	LONGITUDE
XXXXXXXXXX	XXXXXXXXXX

DRAWING REVISIONS

NO.	DESCRIPTION	DATE	BY	CK.	APPR'D
A	ISSUE FOR REVIEW	12/2021	CML	AJ	

DRAWING APPROVALS

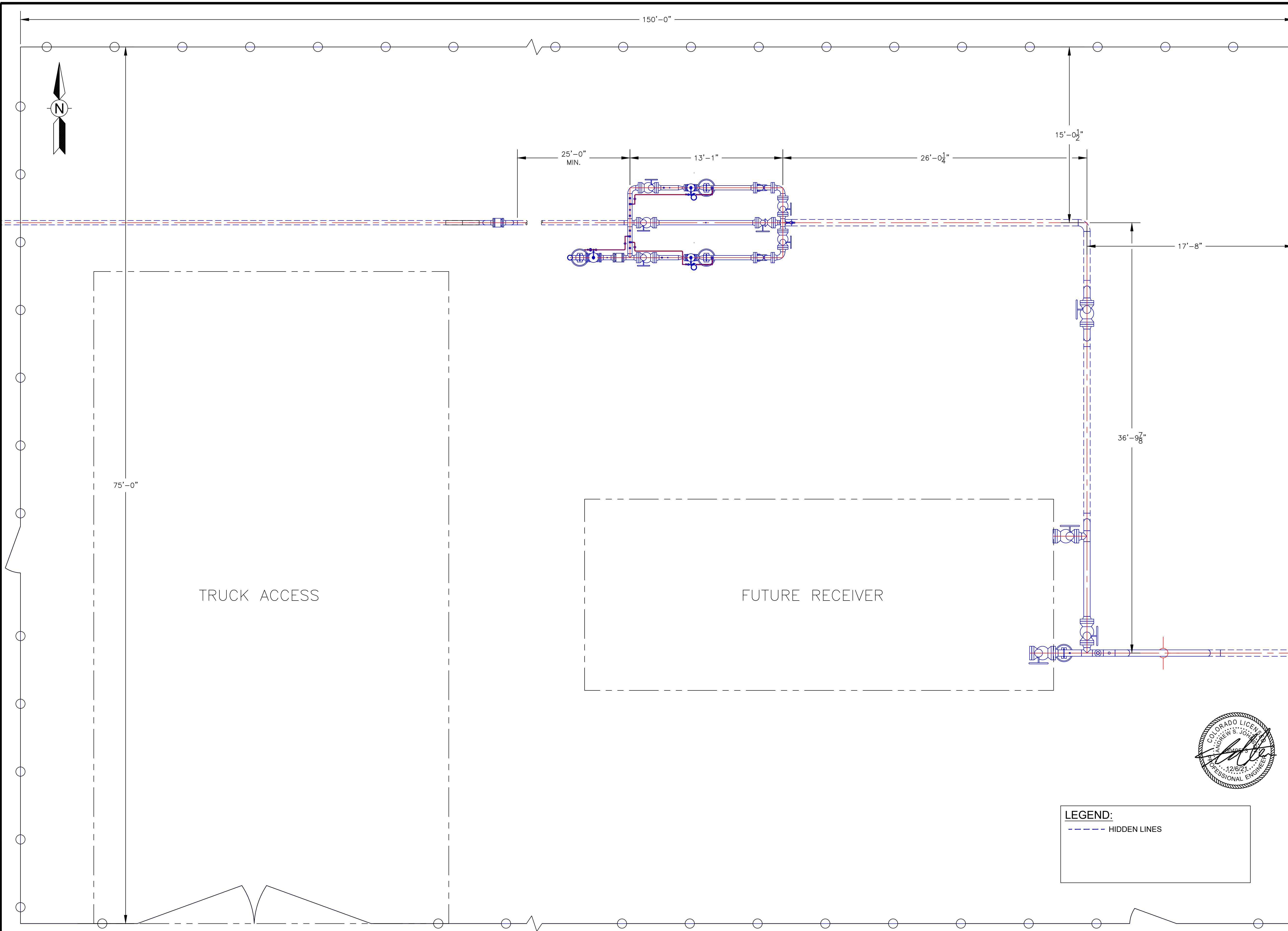
TYPE	DATE	BY
MECHANICAL		
ELECTRICAL		
PROJECT	10/2021	ANDREW JOHNSON
PIPELINE		
DRAFTING		
MEASUREMENT		
FIELD		



BH Natural Gas Engineering Design
 2287 College Road
 Council Bluffs, IA 51503
Black Hills Energy

DRS PLOT PLAN
 HWY 94-2
 COLORADO SPRINGS, CO
 EL PASO COUNTY

DRAWN BY	DATE	2021 CONSTRUCTION
CML	10/19/2021	
SCALE	CHECKED	DWG. TYPE
AS-NOTED	AJ	PRELIM. X
CADD FILE		W.O. NO.
2021 Mayberry DRS Plot Plan.dwg		####
P.N.		SHEET NO.
----		1 of 1



LEGEND:
 - - - - - HIDDEN LINES

DRS PLOT PLAN

EPC 12/29/21



GENERAL NOTES

NOTES

1. CATHODIC TECHNICIAN TO DETERMINE INSULATING REQUIREMENTS.
2. VALVES INSTALLED IN THE HORIZONTAL POSITION TO HAVE VALVE STEM PLACED IN THE HORIZONTAL POSITION.
3. ALL VALVES EXCEPT NEEDLE VALVES TO HAVE LOCKING DEVICES INSTALLED.
4. OPERATIONS OR CONTRACTOR TO CALL ONECALL OR HAVE EXISTING LINE LOCATED BEFORE DIGGING.
5. INSTALL GUARD RAILS AND FENCE AROUND DRS. IF REQUIRED.
6. WELDER TO HAVE 1104 CERTIFICATION.
7. OPERATIONS PERSONNEL AND/OR CONTRACTOR REQUIRED TO PRESSURE TEST NEW CONSTRUCTION TO MEET MAOP REQUIREMENTS LISTED ON THE DRAWING. OPERATIONS TO RETAIN TEST RECORDS. REFERENCE BHE GAS OPERATIONS AND MAINTENANCE MANUAL SECTION 65.
8. UNDERGROUND PIPE COATING EXTENDS ABOVE GRADE 1'-0" MINIMUM, REFERENCE O&M MANUAL 42 FOR APPROVED ABOVE GRADE COATINGS & AIR/SOIL INTERFACE COATINGS & RESTRICTIONS.

LOCATION

LATITUDE	LONGITUDE
XXXXXXXXXX	XXXXXXXXXX

DRAWING REVISIONS

NO.	DESCRIPTION	DATE	BY	CK.	APPR'D
A	ISSUE FOR REVIEW	12/2021	CML	AJ	

DRAWING APPROVALS

TYPE	DATE	BY
MECHANICAL		
ELECTRICAL		
PROJECT	10/2021	ANDREW JOHNSON
PIPELINE		
DRAFTING		
MEASUREMENT		
FIELD		

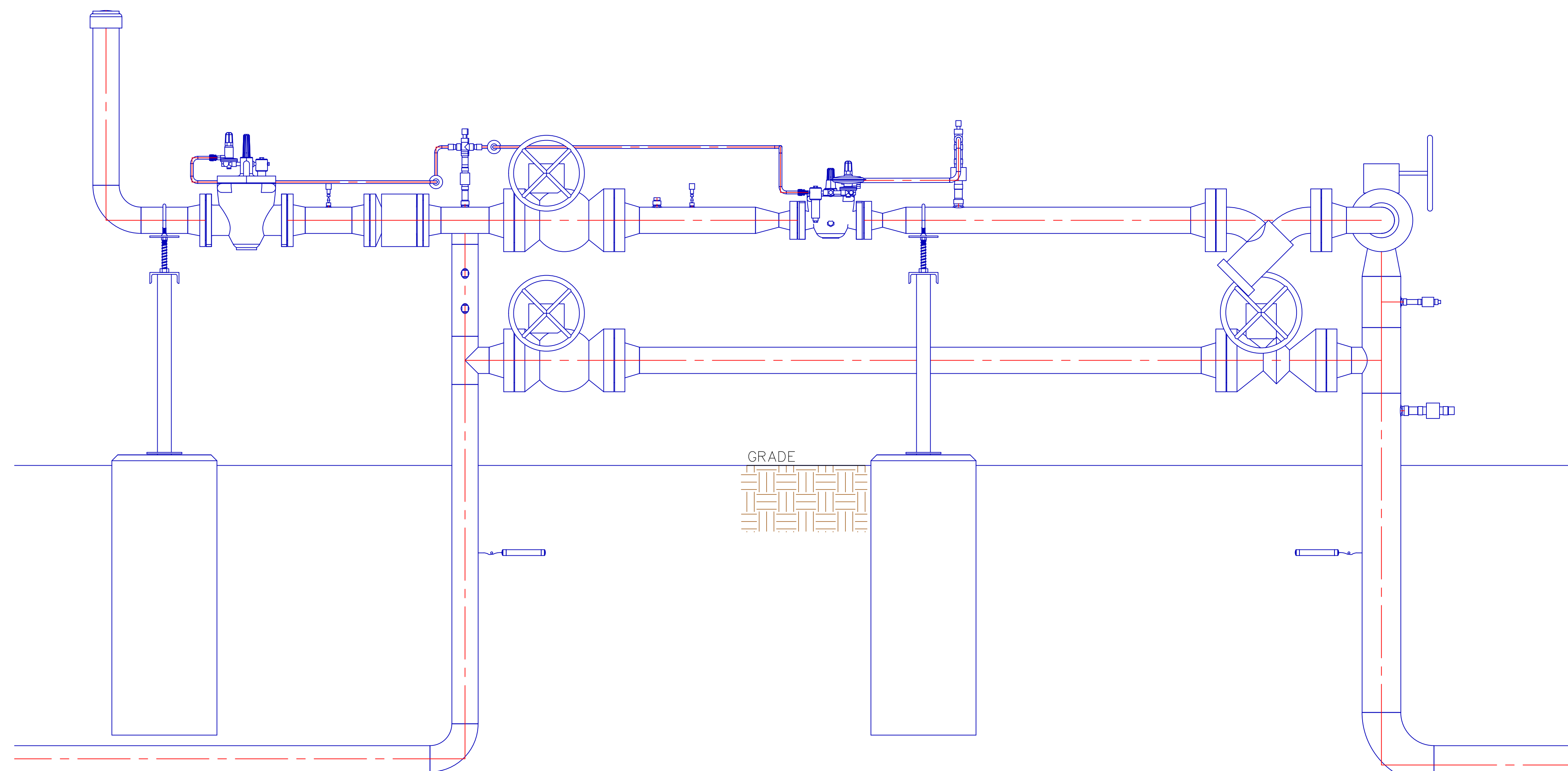


DRS ELEVATION VIEW
 HWY 94-2
 COLORADO SPRINGS, CO
 EL PASO COUNTY



EPC 12/29/21

DRAWN BY	DATE	2021 CONSTRUCTION
CML	10/21/2021	
SCALE	CHECKED	DWG. TYPE
AS-NOTED	AJ	PRELIM. X BID FINAL
CADD FILE	W.O. NO.	###
2021 Mayberry DRS Elevation.dwg		
P.N.	SHEET NO.	1 of 1

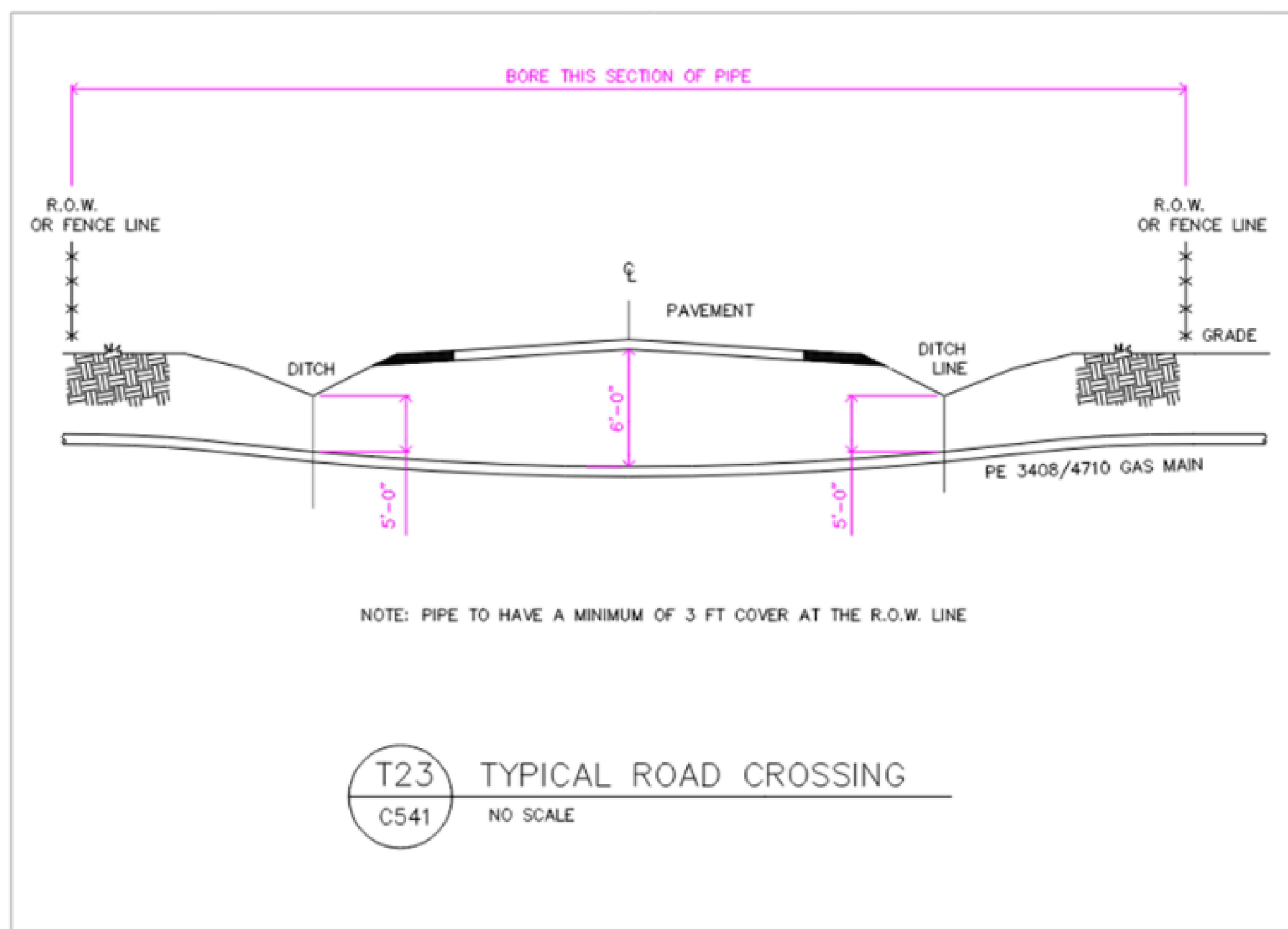


DRS ELEVATION VIEW

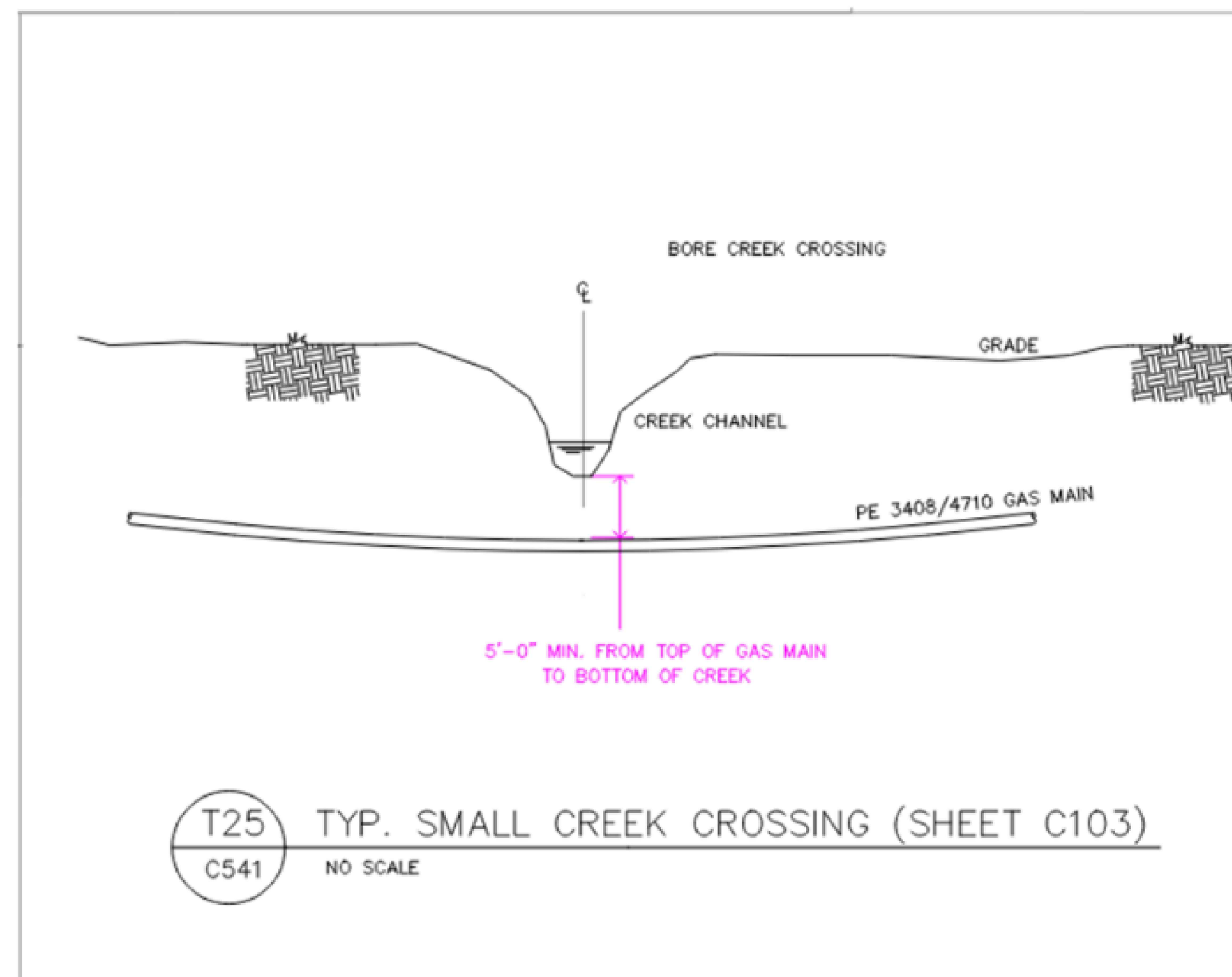


GENERAL NOTES

- NOTES
1. CATHODIC TECHNICIAN TO DETERMINE INSULATING REQUIREMENTS.
 2. VALVES INSTALLED IN THE HORIZONTAL POSITION TO HAVE VALVE STEM PLACED IN THE HORIZONTAL POSITION.
 3. ALL VALVES EXCEPT NEEDLE VALVES TO HAVE LOCKING DEVICES INSTALLED.
 4. OPERATIONS OR CONTRACTOR TO CALL ONECALL OR HAVE EXISTING LINE LOCATED BEFORE DIGGING.
 5. INSTALL GUARD RAILS AND FENCE AROUND DRS. IF REQUIRED.
 6. WELDER TO HAVE 1104 CERTIFICATION.
 7. OPERATIONS PERSONNEL AND/OR CONTRACTOR REQUIRED TO PRESSURE TEST NEW CONSTRUCTION TO MEET MAOP REQUIREMENTS LISTED ON THE DRAWING. OPERATIONS TO RETAIN TEST RECORDS. REFERENCE BHE GAS OPERATIONS AND MAINTENANCE MANUAL SECTION 65.
 8. UNDERGROUND PIPE COATING EXTENDS ABOVE GRADE 1'-0" MINIMUM, REFERENCE O&M MANUAL 42 FOR APPROVED ABOVE GRADE COATINGS & AIR/SOIL INTERFACE COATINGS & RESTRICTIONS.



T23 TYPICAL ROAD CROSSING
C541 NO SCALE

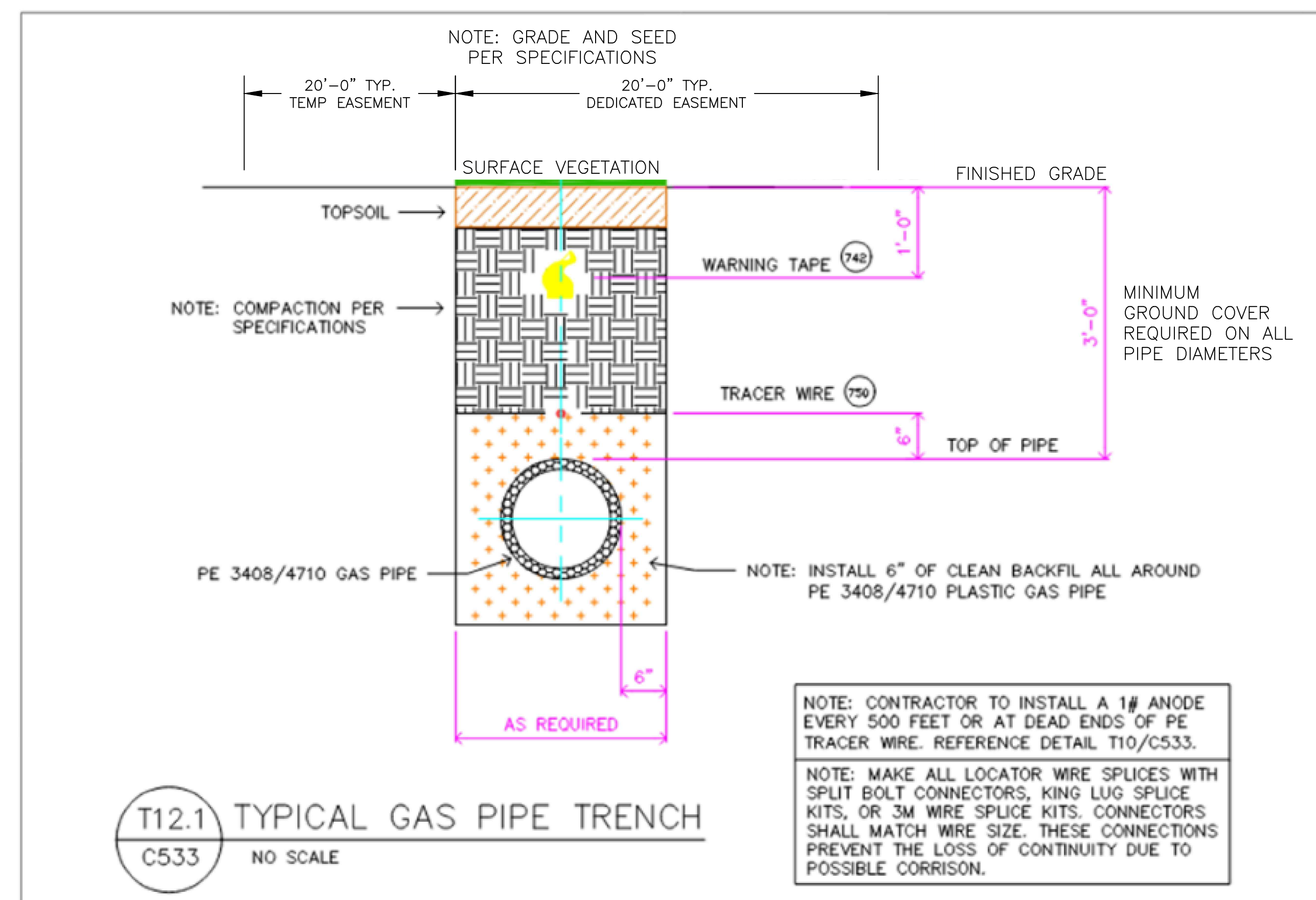


T25 TYP. SMALL CREEK CROSSING (SHEET C103)
C541 NO SCALE

NOTES:

(1) FOREIGN ENCROACHMENTS (GAS, WATER, ELECTRIC AND SEWER LINES) MAY CROSS PERPENDICULAR TO BHE'S PIPELINE, UPON WRITTEN PERMISSION FROM BHE, PROVIDED THAT A MINIMUM OF FOUR (4) FEET OF VERTICAL CLEARANCE IS MAINTAINED BETWEEN BHE PIPELINE(S) AND THE FOREIGN LINE, OR SUCH ADDITIONAL CLEARANCE AS MAY BE NECESSARY DEPENDING ON THE CIRCUMSTANCES. CONSTANT LINE ELEVATIONS MUST BE MAINTAINED ACROSS BHE'S ENTIRE EASEMENT WIDTH, GRAVITY DRAIN LINES ARE THE ONLY EXCEPTION. FOREIGN ENCROACHMENTS BELOW ANY BHE PIPELINE MUST BE EVALUATED BY BHE TO DETERMINE WHETHER A SIGNIFICANT LENGTH OF THE BHE PIPELINE WILL BE EXPOSED AND UNSUPPORTED DURING CONSTRUCTION. WHEN INSTALLING UNDERGROUND UTILITIES, THE LAST LINE SHOULD BE PLACED BENEATH ALL EXISTING LINES UNLESS IT IS IMPRACTICAL OR UNREASONABLE TO DO SO. FOREIGN ENCROACHMENTS ABOVE THE BHE PIPELINE WITH LESS THAN FOUR (4) FEET OF CLEARANCE MUST BE REVIEWED AND SEPARATELY CONSENTED TO BY BHE ENGINEERING TO EVALUATE WHETHER ADDITIONAL SUPPORT MAY BE NECESSARY TO PREVENT SETTLING ON TOP OF THE BHE PIPELINE.

A FOREIGN CROSSING SHALL CROSS BHE PIPELINE(S) AND/OR FACILITIES AT AS NEAR A NINETY-DEGREE ANGLE AS POSSIBLE. A FOREIGN ENCROACHMENT SHALL NOT RUN PARALLEL TO BHE PIPELINE WITHIN ANY BHE EASEMENT WITHOUT WRITTEN PERMISSION FROM BHE. IF PERMITTED, A MINIMUM CLEARANCE OF FIVE (5) FEET, OR SUCH ADDITIONAL CLEARANCE AS MAY BE NECESSARY DEPENDING ON THE CIRCUMSTANCES SHALL BE MAINTAINED UNLESS REVIEWED AND SEPARATELY CONSENTED TO IN WRITING BY BHE ENGINEERING AND OPERATIONS



T12.1 TYPICAL GAS PIPE TRENCH
C533 NO SCALE

LOCATION					
LATITUDE			LONGITUDE		
XXXXXXXXXX			XXXXXXXXXX		
DRAWING REVISIONS					
NO.	DESCRIPTION	DATE	BY	CHK.	APPROV'D
A	ISSUE FOR REVIEW	12/2021	CML	AJ	

DRAWING APPROVALS		
TYPE	DATE	BY
MECHANICAL		
ELECTRICAL		
PROJECT	10/2021	ANDREW JOHNSON
PIPELINE		
DRAFTING		
MEASUREMENT		
FIELD		

Natural Gas Engineering Design
2287 College Road
Council Bluffs, IA
51503

TYPICAL CROSSING DETAILS
HWY 94-2
COLORADO SPRINGS, CO
EL PASO COUNTY

DRAWN BY	CML	DATE	10/21/2021	2021 CONSTRUCTION
SCALE	AS-NOTED	CHECKED	AJ	DWG. TYPE PRELIM. X BID FINAL
CAO FILE	2021 Mayberry Crossing Details.dwg	W.O. NO.	####	
P.N.	----	SHEET NO.	1 of 1	



EPC 12/29/21