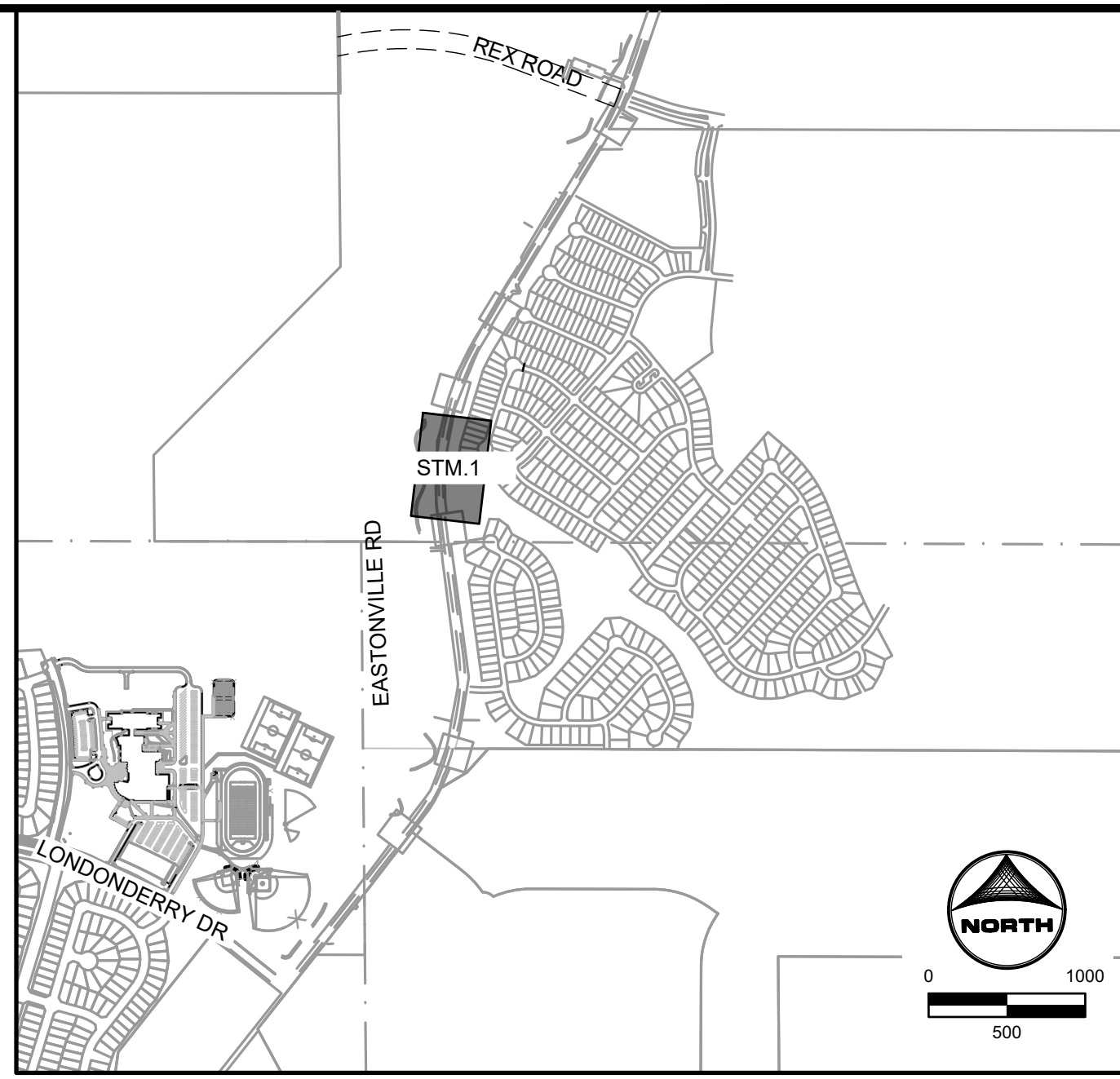
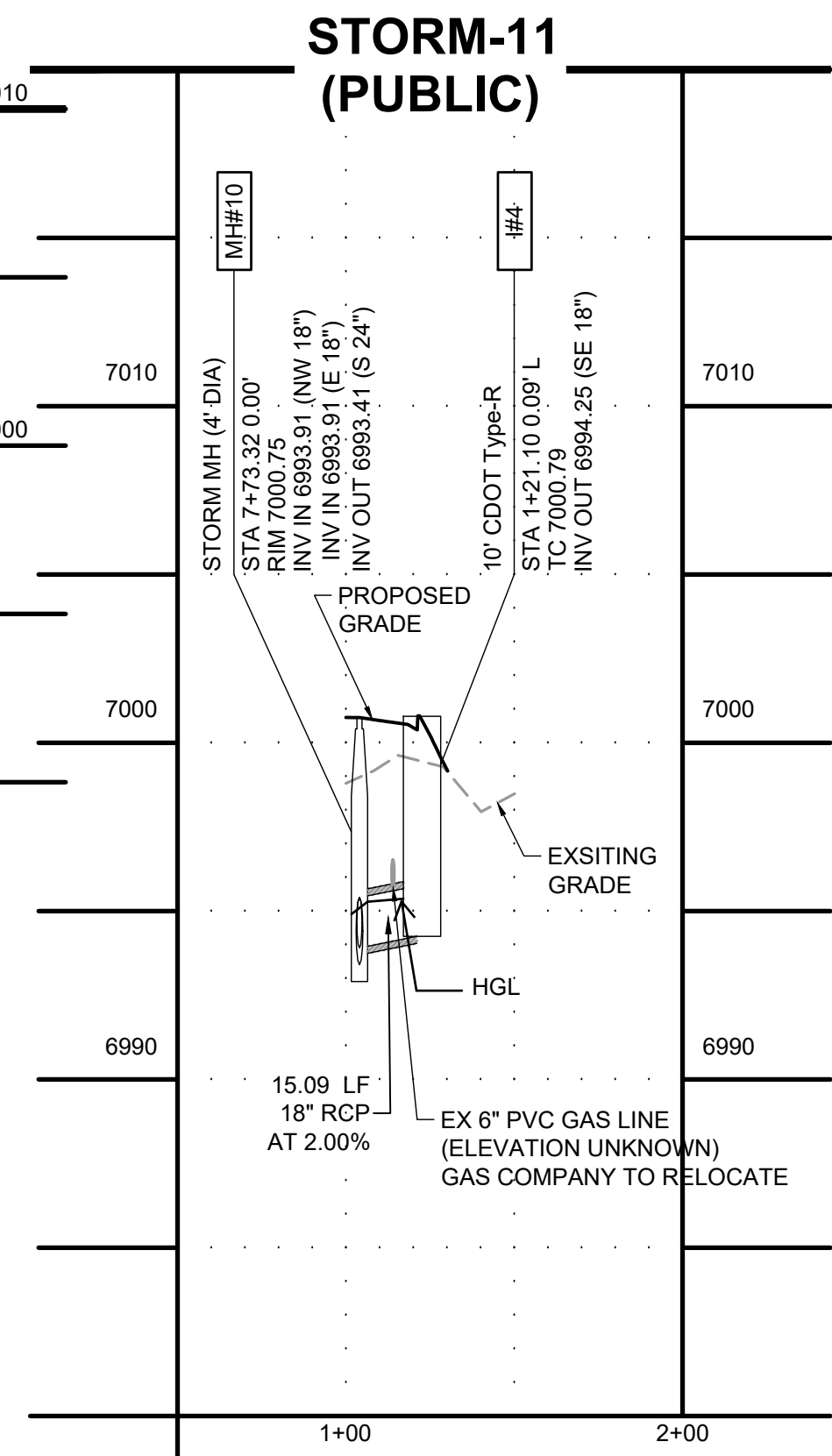
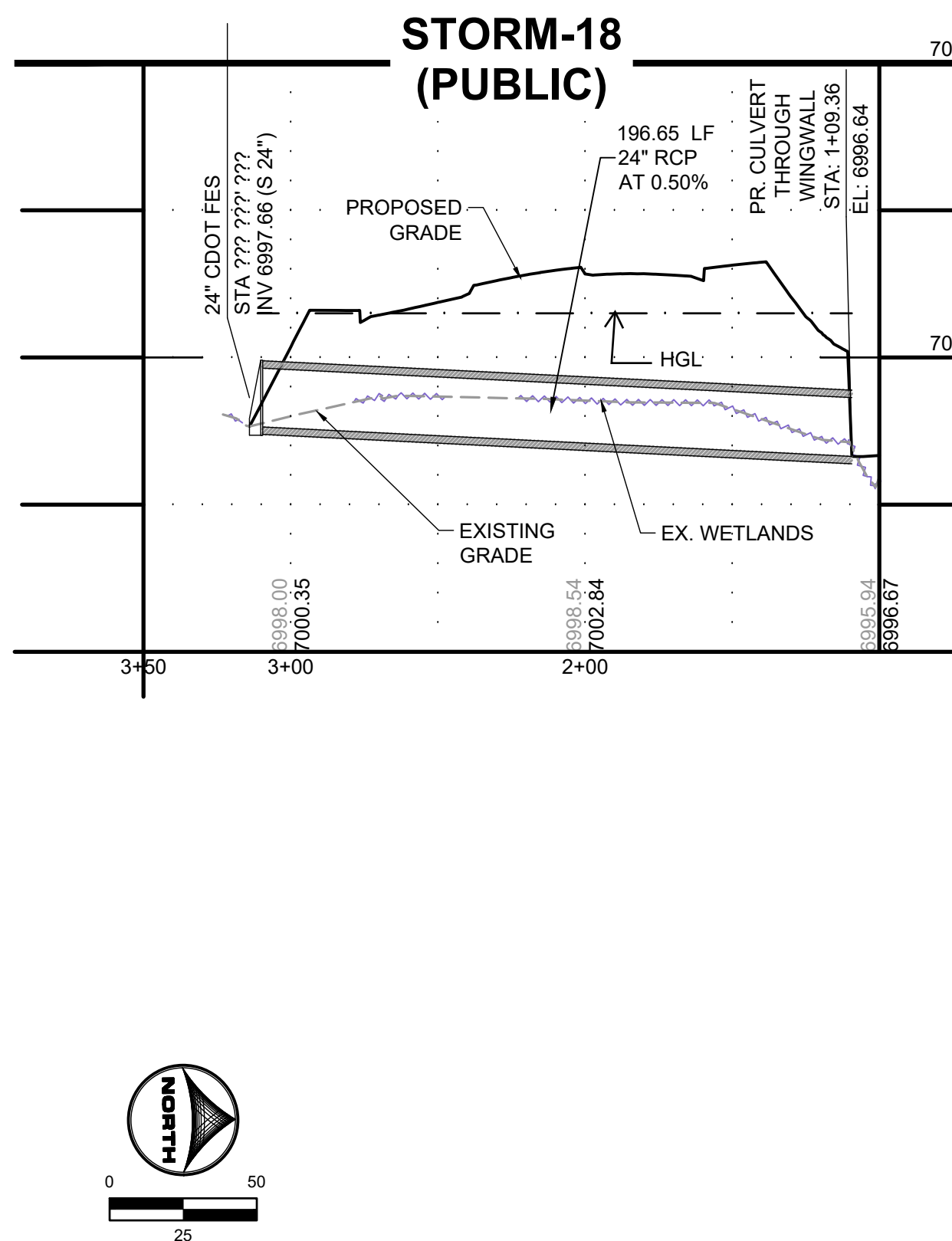
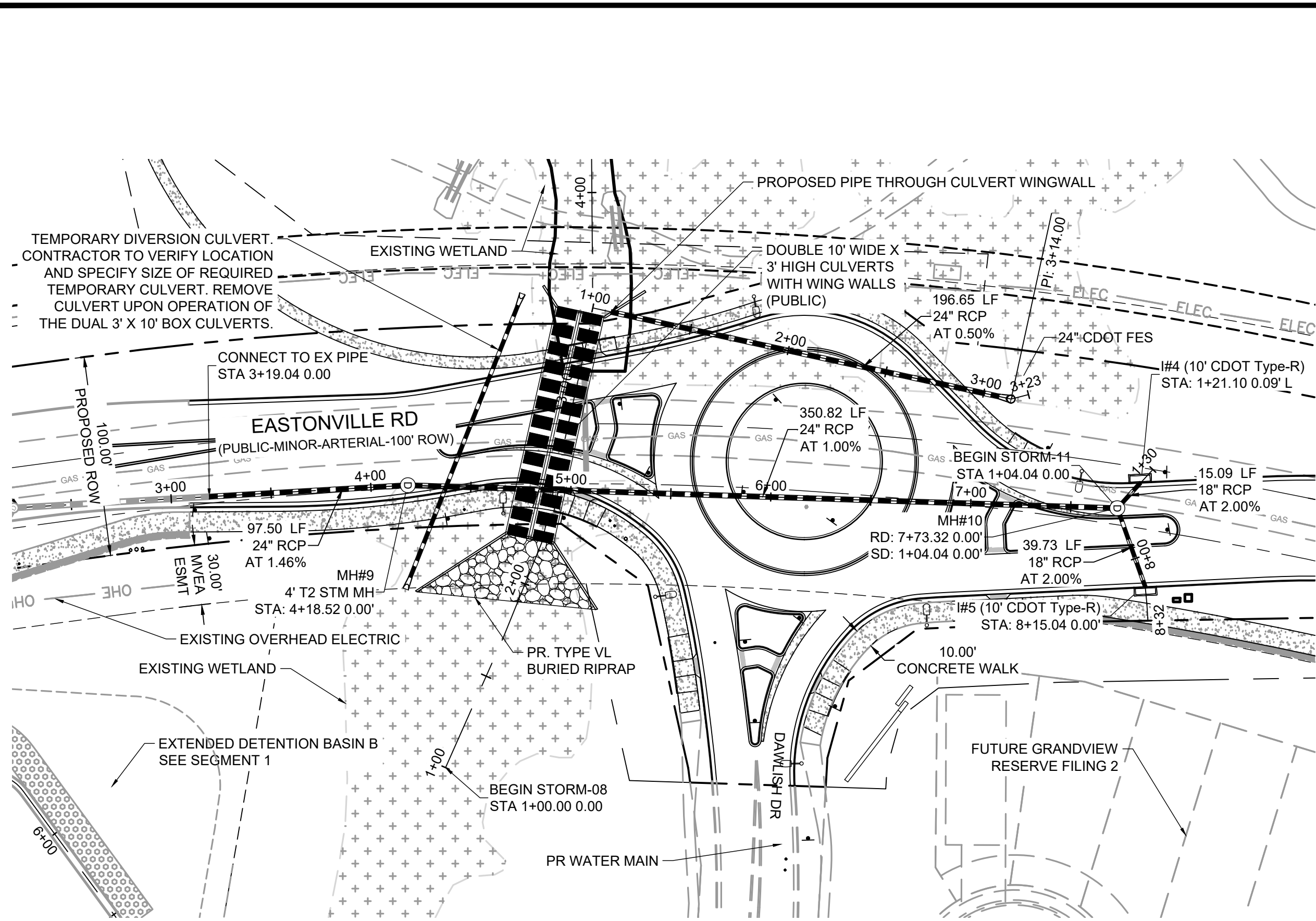
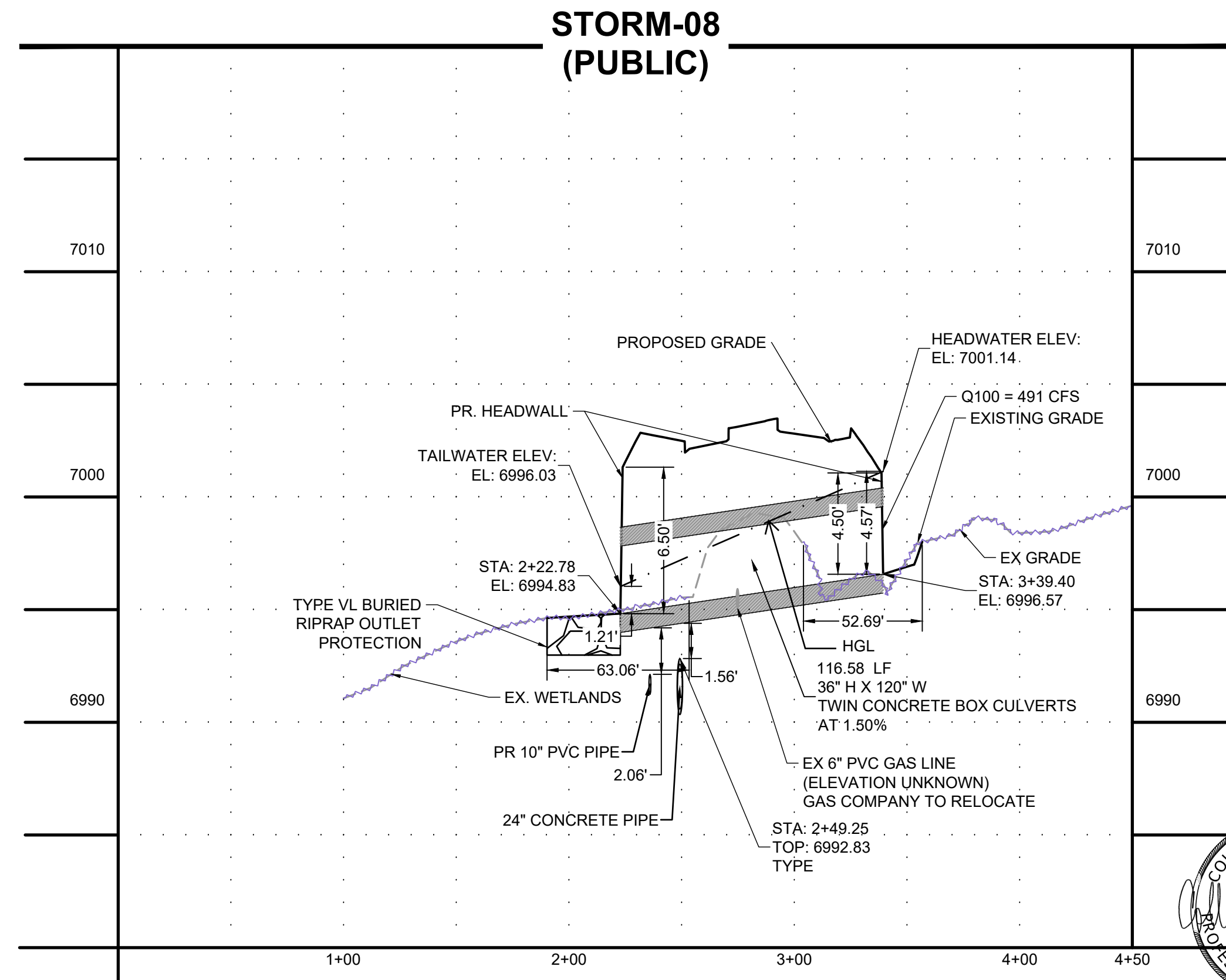
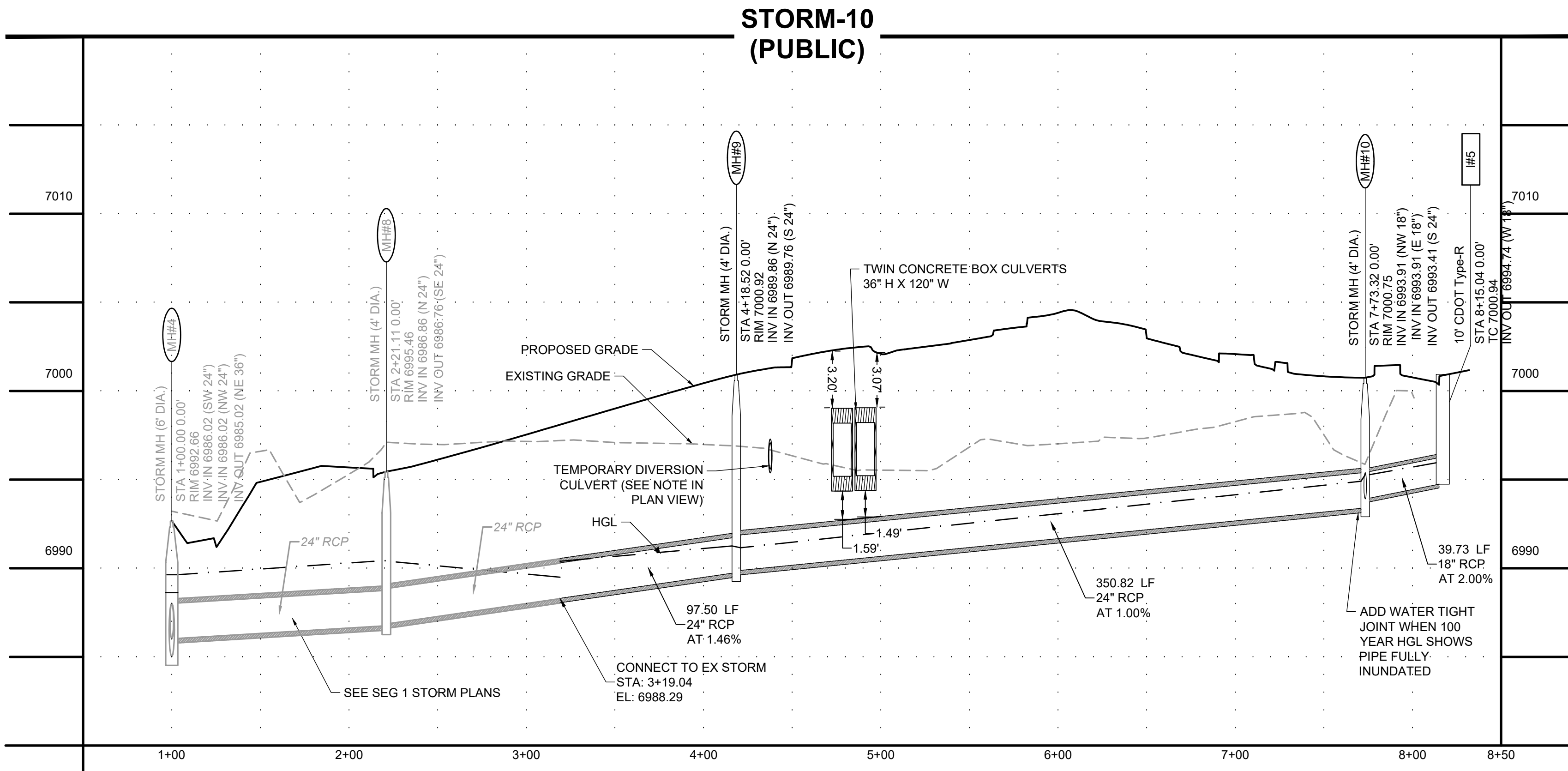


HR GREEN - COLORADO SPRINGS 1975 RESEARCH PARKWAY SUITE 230 COLORADO SPRINGS CO 80920 PHONE: 719.300.4140 FAX: 713.965.0044
 EASTONVILLE ROAD IMPROVEMENTS DR. HORTON EL PASO COUNTY, COLORADO
 FROM GRANDVIEW FILING 1 TO REX RD (SEGMENT 2) STORM PLAN & PROFILE I
 SHEET STM.1 76
 EDARP FILING NO. CDR2321
 COLORADO LICENSED PROFESSIONAL ENGINEER 56067 8/25/2024
 DRAWN BY: AXB JOB DATE: 8/25/2024 BAR IS ONE INCH ON OFFICIAL DRAWINGS. 1" APPROVED: CPM JOB NUMBER: 201662.08 0 IF NOT ONE INCH, ADJUST SCALE ACCORDINGLY. CAD DATE: 8/28/2024 CAD FILE: J:\2020\201662\CAD\Drawings\Eastonville_Road_662.08\Segment_2\CID\Road_CDs\Storm_PNP



SUPPLEMENTAL LEGEND:
 EXISTING WETLANDS



DRAWN BY: AXB JOB DATE: 8/25/2024
 APPROVED: CPM JOB NUMBER: 201662.08
 CAD DATE: 8/28/2024
 CAD FILE: J:\2020\201662\CAD\Drawings\Eastonville_Road_662.08\Segment_2\CID\Road_CDs\Storm_PNP

NO.	DATE	BY	REVISION DESCRIPTION

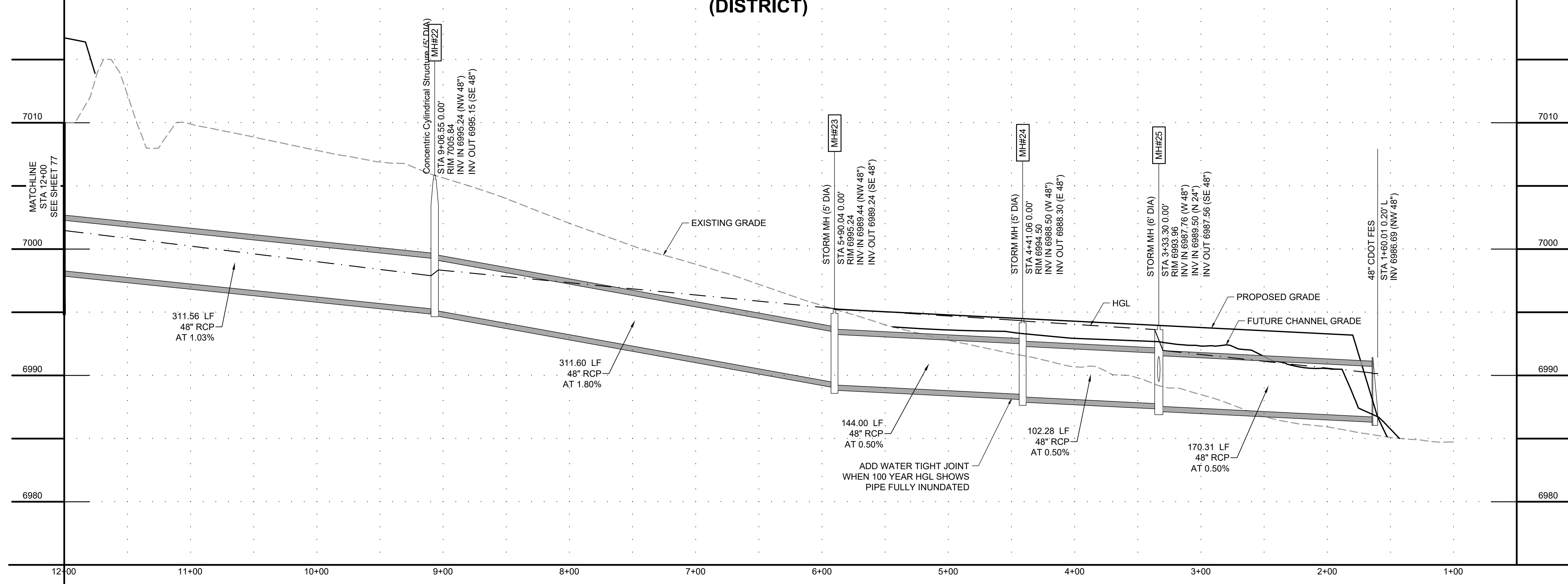
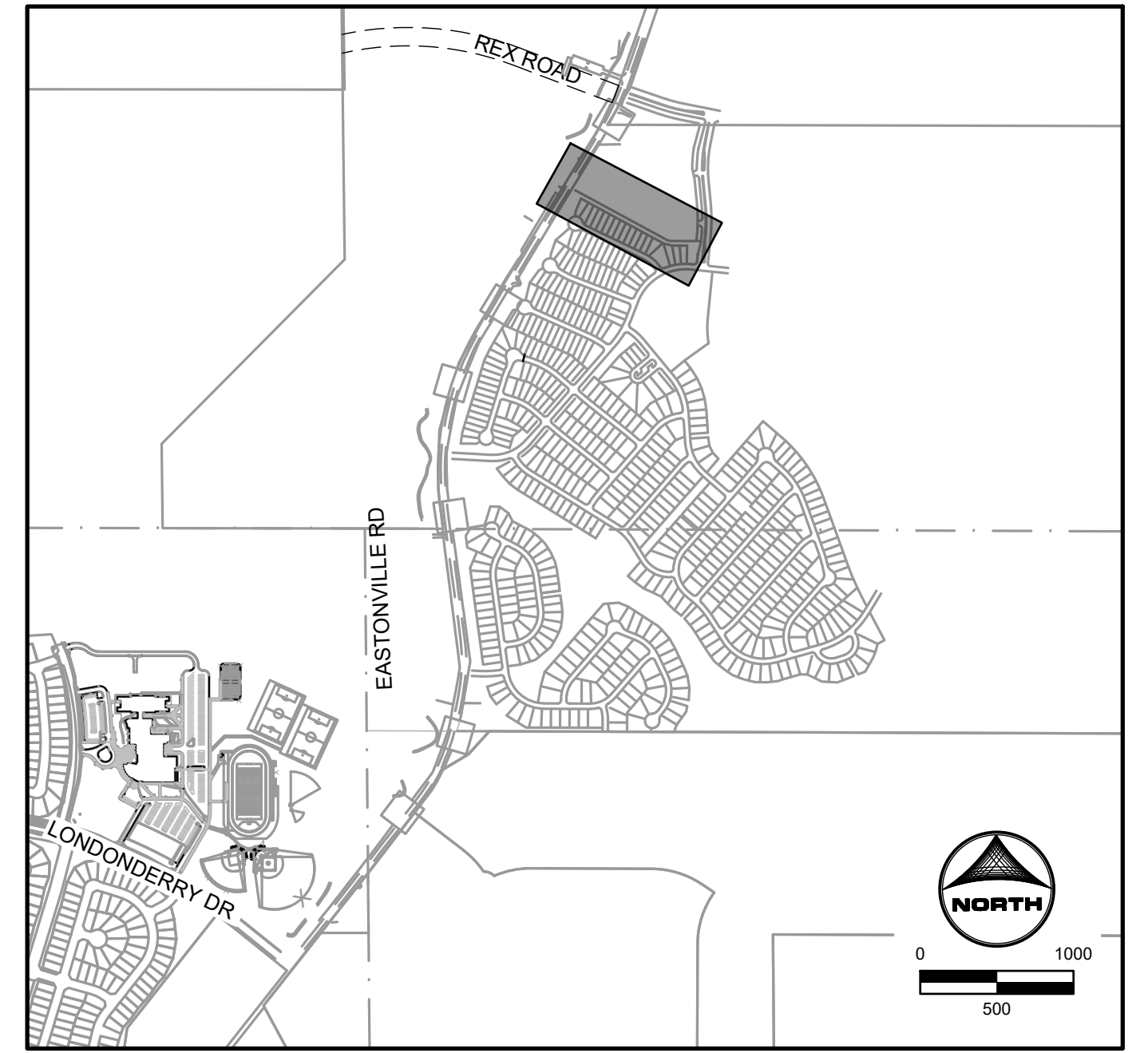
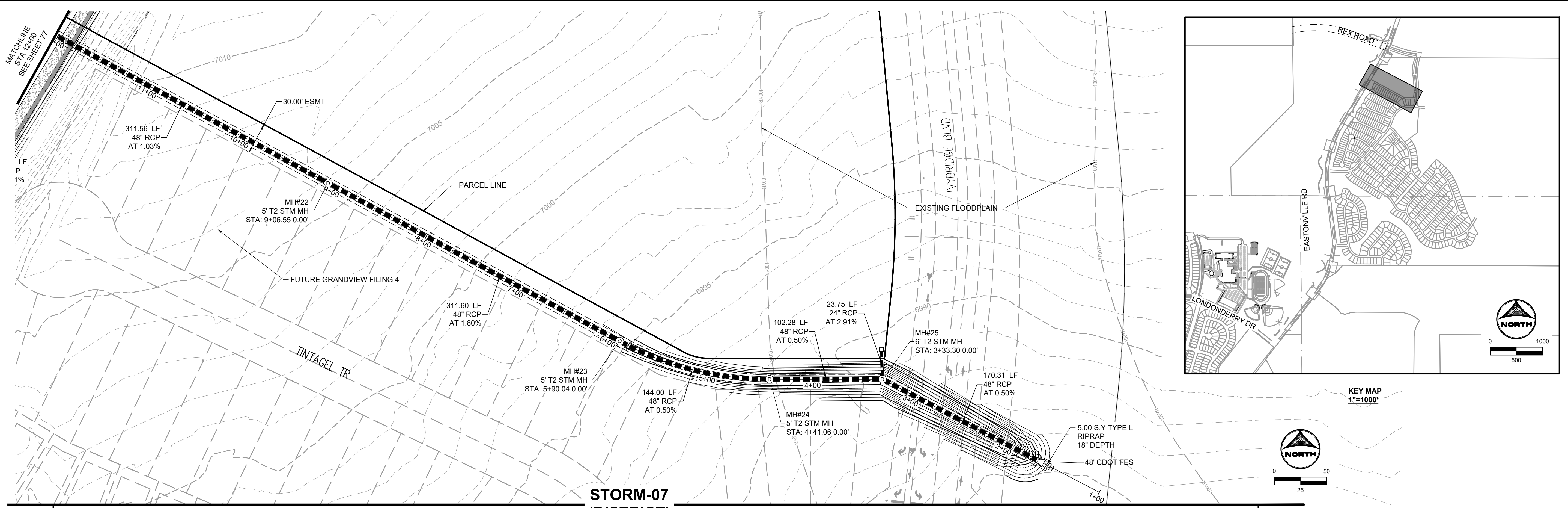
HR GREEN
 HR GREEN - COLORADO SPRINGS
 1975 RESEARCH PARKWAY SUITE 230
 COLORADO SPRINGS CO 80920
 PHONE: 719.300.4140
 FAX: 713.965.0044

EASTONVILLE ROAD IMPROVEMENTS
DR. HORTON
 EL PASO COUNTY, COLORADO

FROM GRANDVIEW FILING 1 TO REX RD (SEGMENT 2)
 STORM PLAN & PROFILE I

SHEET
STM.1 76
 EDARP FILING NO. CDR2321

HR GREEN - COLORADO SPRINGS 1975 RESEARCH PARKWAY SUITE 230 COLORADO SPRINGS CO 80920 PHONE: 719.300.4140 FAX: 713.965.0044



EDARP FILING NO. CDR2321

DRAWN BY: AXB	JOB DATE: 8/23/2024	BAR IS ONE INCH ON OFFICIAL DRAWINGS.
APPROVED: CPM	JOB NUMBER: 201662.08	0" = 1'
CAD DATE: 8/28/2024		IF NOT ONE INCH, ADJUST SCALE ACCORDINGLY.
CAD FILE: J:\2020\201662\CAD\DWG\C\Eastonville_Road_662.08\Segment_3\CD\Road_CDs\Storm_PN		

NO.	DATE	BY	REVISION DESCRIPTION

HRGreen
 HR GREEN - COLORADO SPRINGS
 1975 RESEARCH PARKWAY SUITE 230
 COLORADO SPRINGS CO 80920
 PHONE: 719.300.4140
 FAX: 713.965.0044

EASTONVILLE ROAD IMPROVEMENTS
DR. HORTON
 EL PASO COUNTY, COLORADO

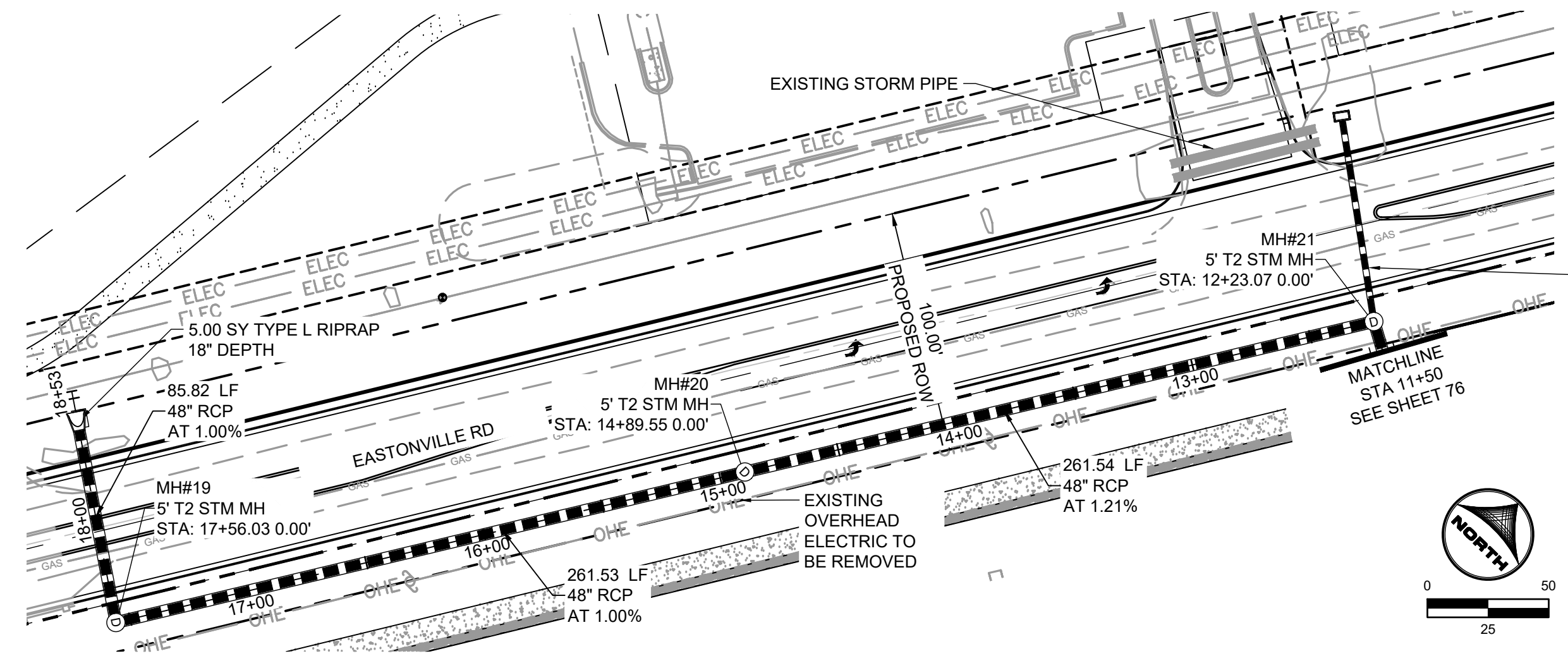
D-R HORTON
 America's Builder

FROM GRANDVIEW FILING 1 TO REX RD (SEGMENT 2)
 STORM PLAN & PROFILE II

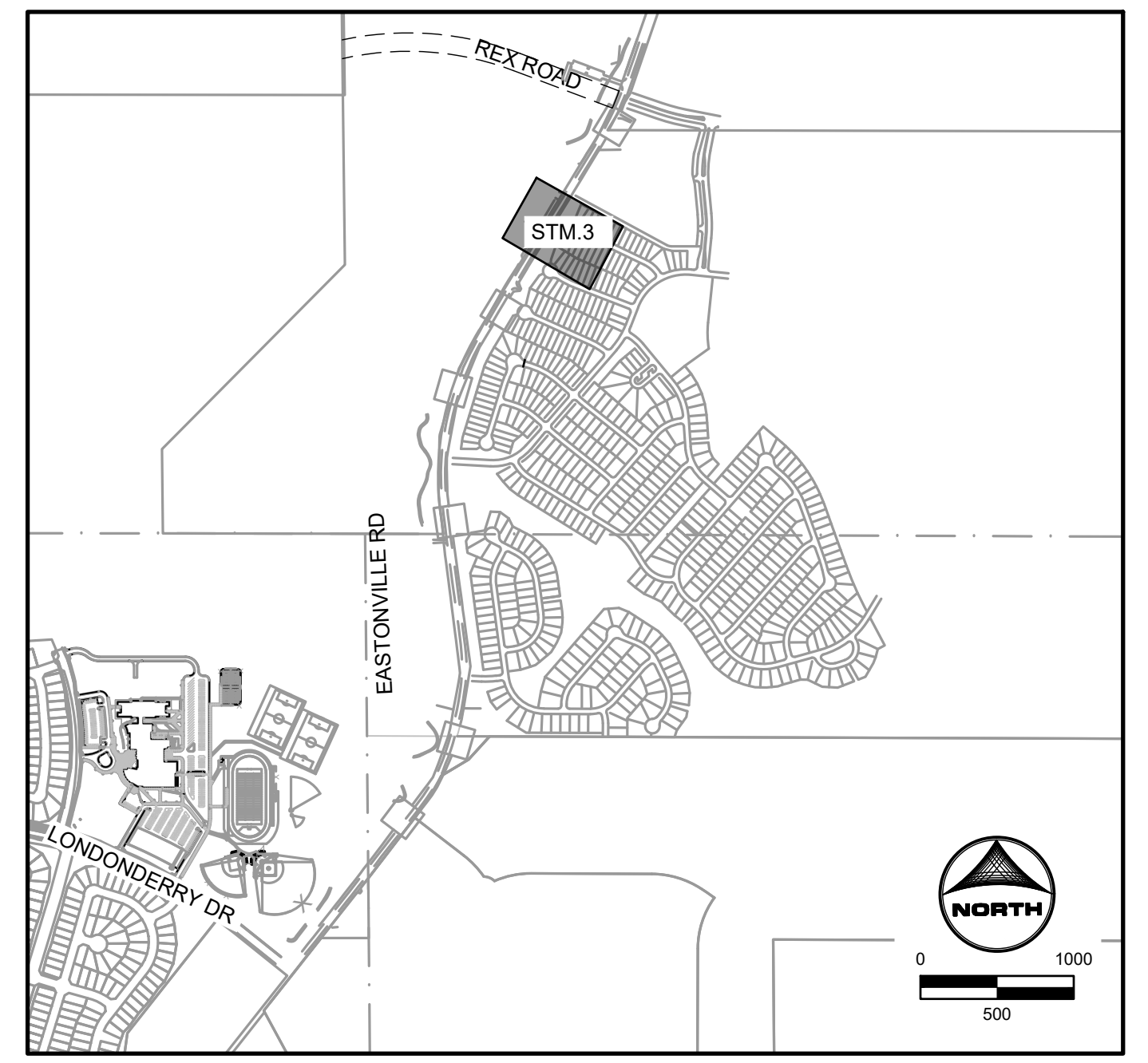
SHEET
STM.2 **77**



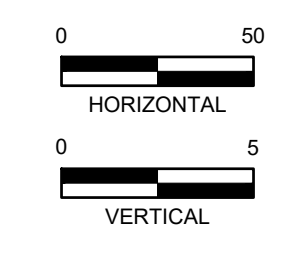
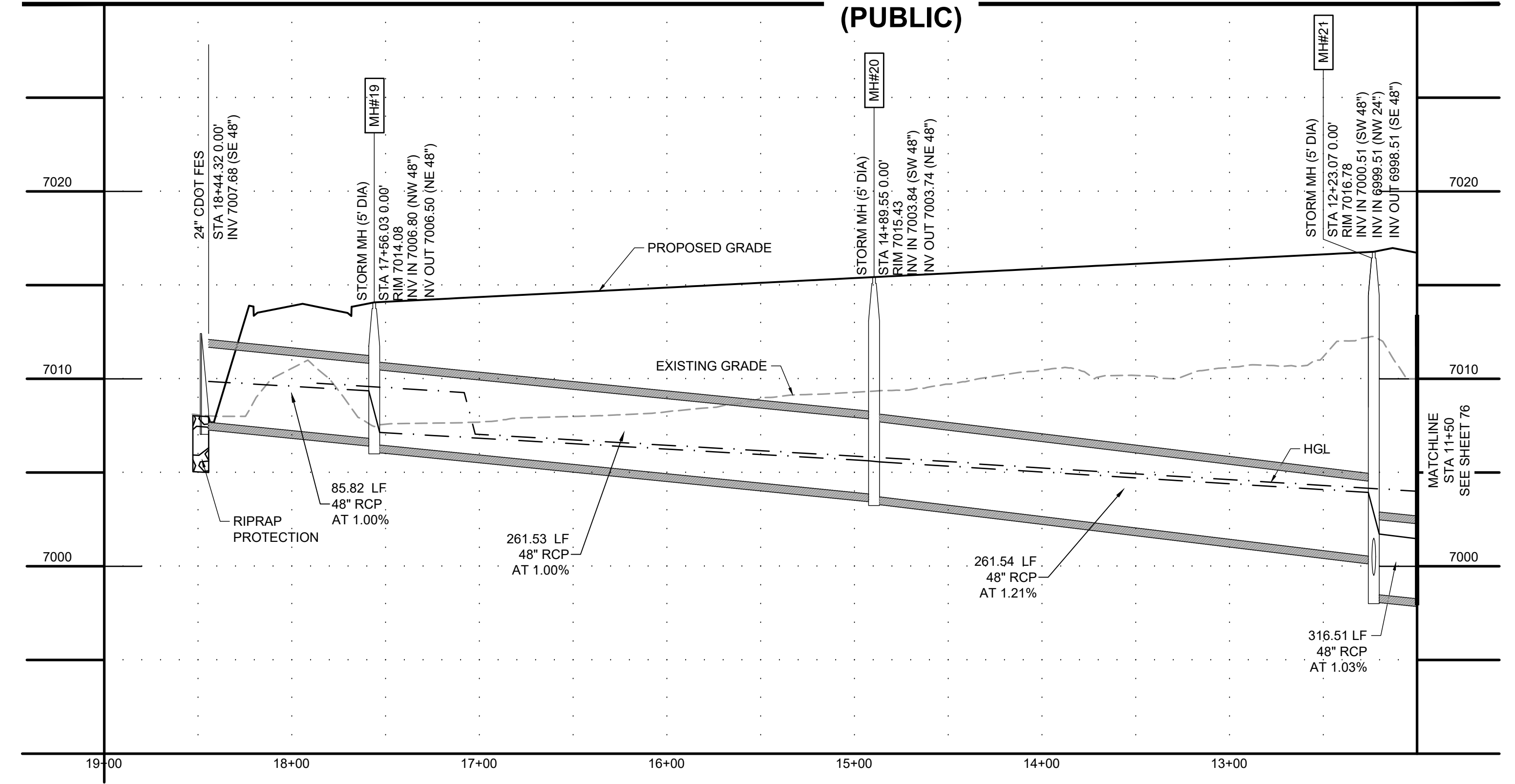
HR GREEN - COLORADO SPRINGS 1975 RESEARCH PARKWAY SUITE 230 COLORADO SPRINGS CO 80920 PHONE: 719.300.4140 FAX: 713.965.0044



REFER TO STORM-16 FOR PROFILE



STORM-07 (PUBLIC)



DRAWN BY: AXB	JOB DATE: 8/23/2024	BAR IS ONE INCH ON OFFICIAL DRAWINGS: 0" = 1"
APPROVED: CPM	JOB NUMBER: 201662.08	IF NOT ONE INCH, ADJUST SCALE ACCORDINGLY.
CAD DATE: 8/28/2024		
CAD FILE: J:\2020\201662\CAD\Drawings\Eastonville_Road_662.08\Segment_3\CDD\Road_CDs\Storm_PNP		

NO.	DATE	BY	REVISION DESCRIPTION

HRGreen
 HR GREEN - COLORADO SPRINGS
 1975 RESEARCH PARKWAY SUITE 230
 COLORADO SPRINGS CO 80920
 PHONE: 719.300.4140
 FAX: 713.965.0044

EASTONVILLE ROAD IMPROVEMENTS
DR. HORTON
 EL PASO COUNTY, COLORADO

D-R HORTON
 America's Builder

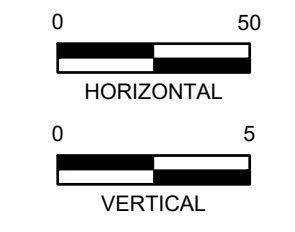
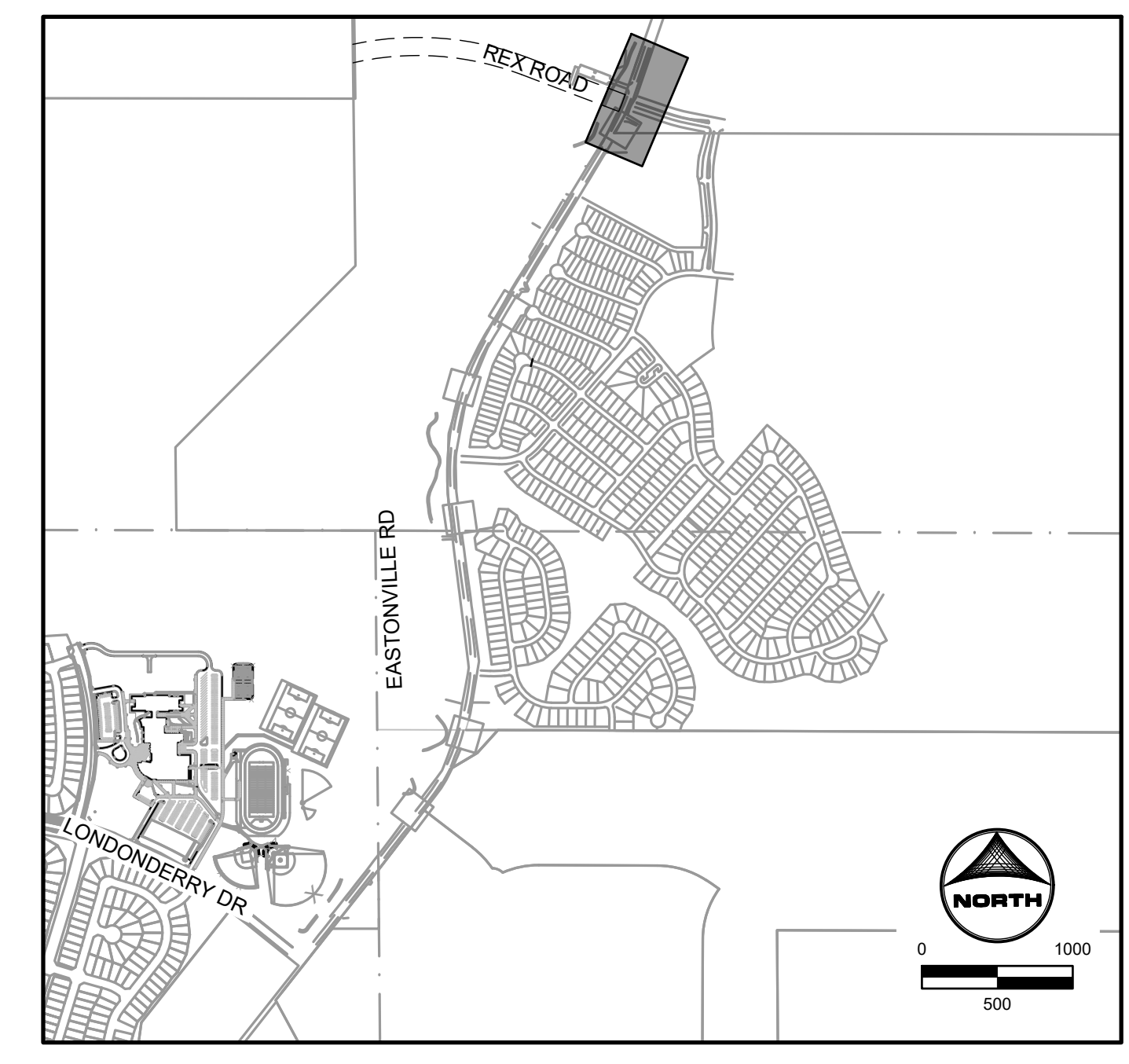
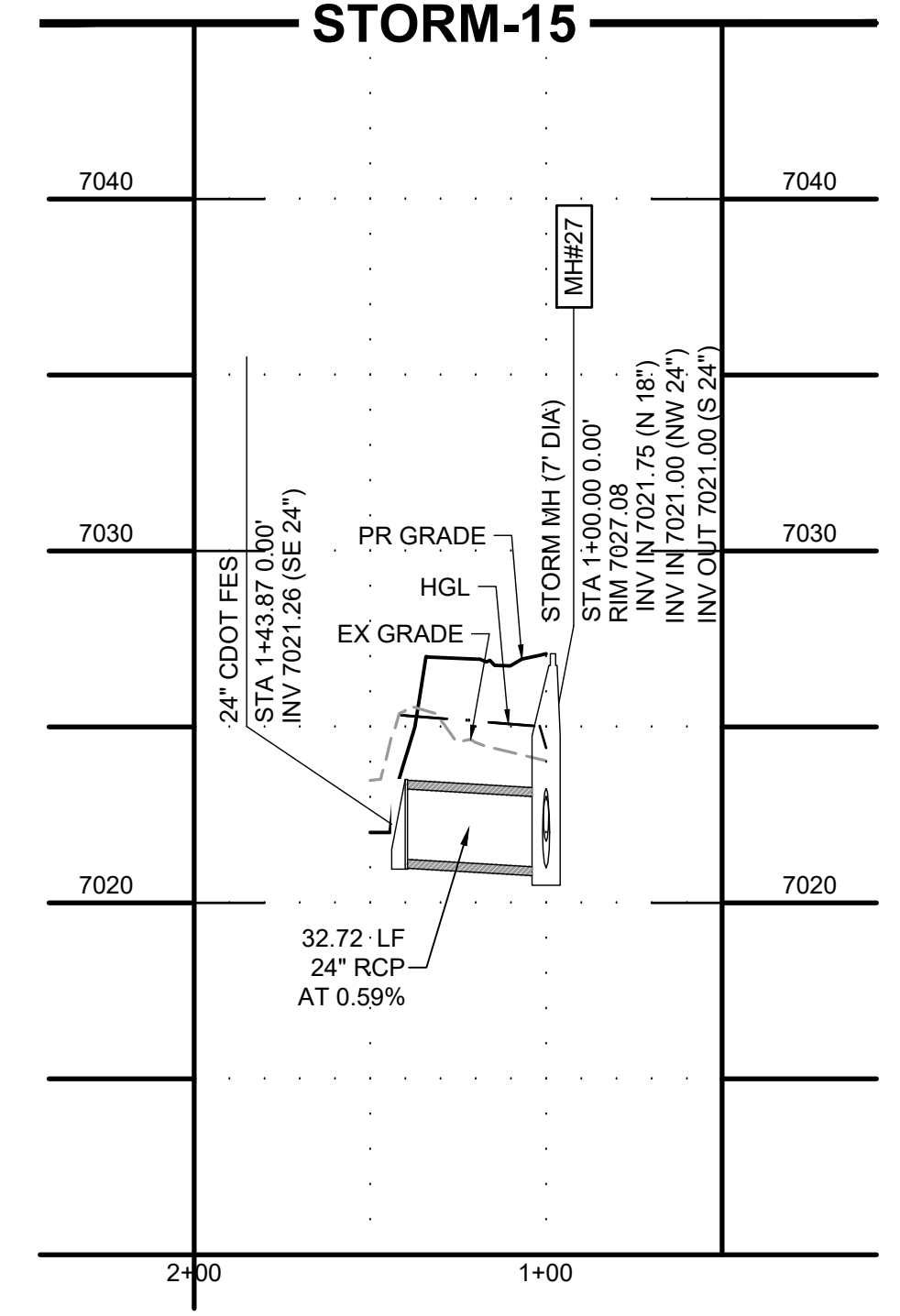
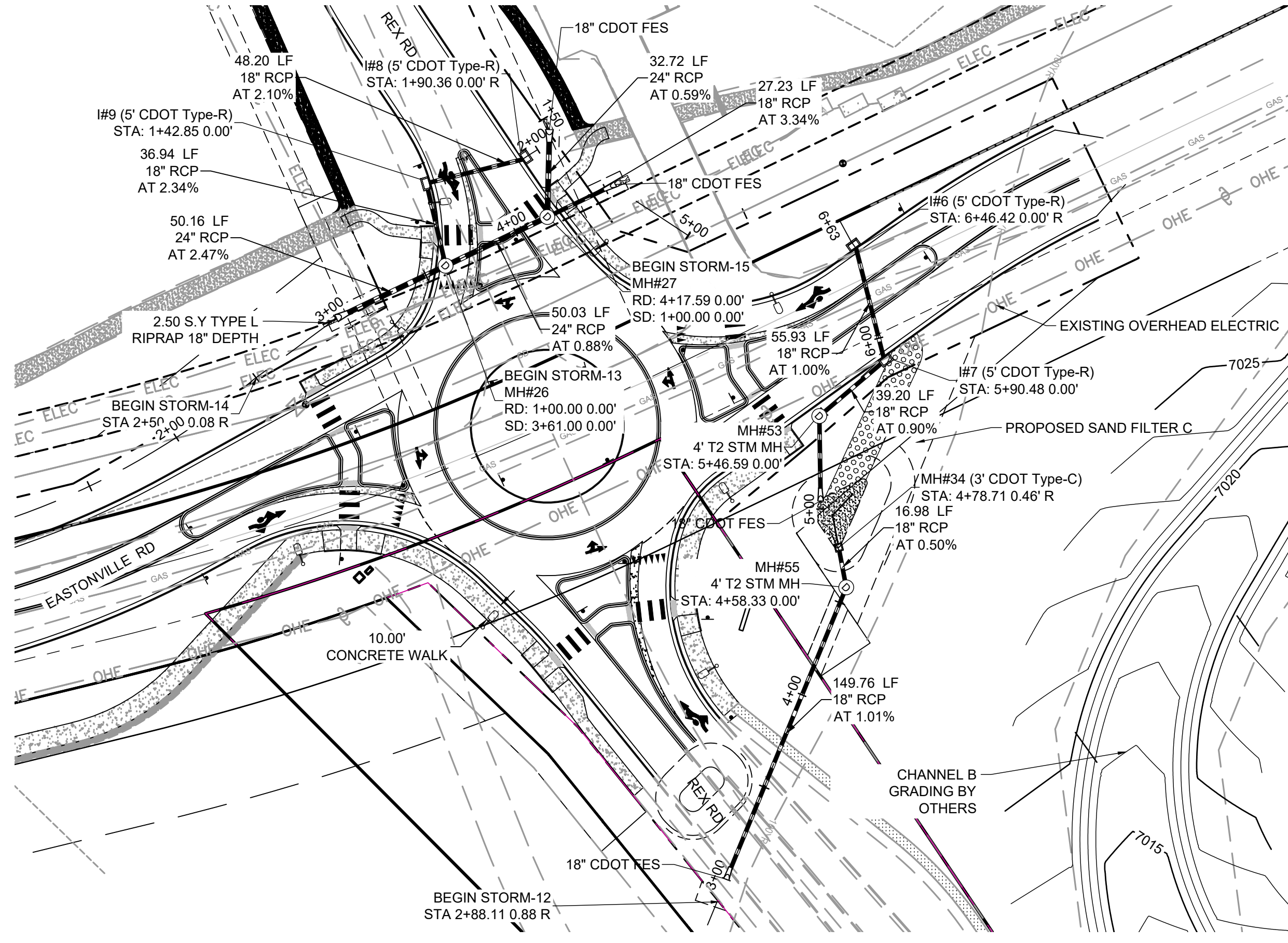
FROM GRANDVIEW FILING 1 TO REX RD (SEGMENT 2)
 STORM PLAN & PROFILE II

SHEET
STM.3 78

EDARP FILING NO. CDR2321



HR GREEN - COLORADO SPRINGS 1975 RESEARCH PARKWAY SUITE 230 COLORADO SPRINGS CO 80920 PHONE: 719.300.4140 FAX: 713.965.0044

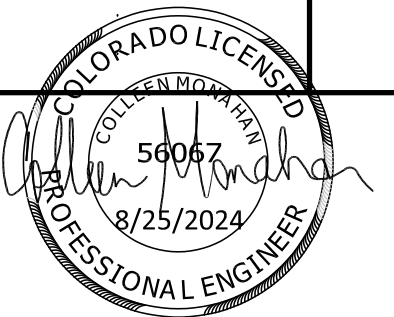
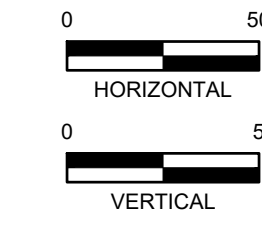
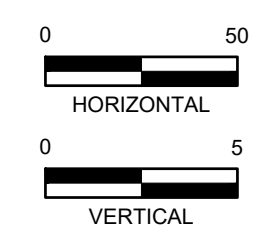
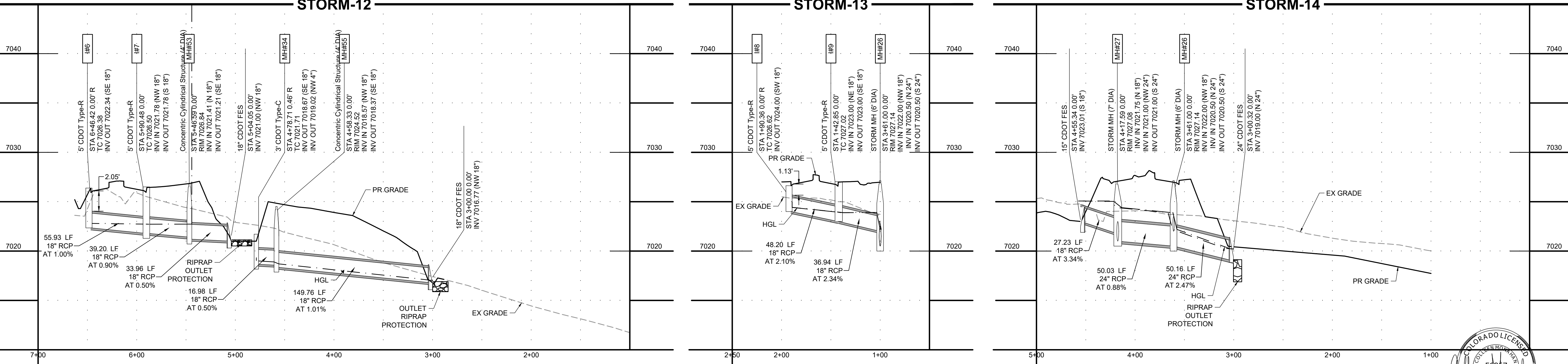


KEY MAP 1"=1000'

STORM-12

STORM-13

STORM-14



EDARP FILING NO. CDR2321

DRAWN BY: AXB	JOB DATE: 8/23/2024	BAR IS ONE INCH ON OFFICIAL DRAWINGS: 0
APPROVED: CPM	JOB NUMBER: 201662.08	IF NOT ONE INCH, ADJUST SCALE ACCORDINGLY
CAD DATE: 8/28/2024		
CAD FILE: J:\2020\201662\CAD\Drawings\Eastonville_Road_662.08\Segment_3\CDD\Road_CDs\Storm_PNP		

NO.	DATE	BY	REVISION DESCRIPTION

HRGreen
 HR GREEN - COLORADO SPRINGS
 1975 RESEARCH PARKWAY SUITE 230
 COLORADO SPRINGS CO 80920
 PHONE: 719.300.4140
 FAX: 713.965.0044

EASTONVILLE ROAD IMPROVEMENTS
DR. HORTON
 EL PASO COUNTY, COLORADO

D-R HORTON
 America's Builder

FROM GRANDVIEW FILING 1 TO REX RD (SEGMENT 2)
 STORM PLAN & PROFILE III