



COMMISSIONERS:
CAMI BREMER (CHAIR)
CARRIE GEITNER (VICE-CHAIR)

COLORADO

HOLLY WILLIAMS
STAN VANDERWERF
LONGINOS GONZALEZ, JR.

PLANNING & COMMUNITY DEVELOPMENT

TO: El Paso County Planning Commission
Thomas Bailey, Chair

FROM: Ryan Howser, AICP, Planner III
Daniel Torres, PE, Senior Engineer
Meggan Herington, AICP, Executive Director

RE: Project File Number: PUDSP235
Project Name: Rolling Hills Ranch North
Parcel Number: 4200000477

OWNER:	REPRESENTATIVE:
GTL, Inc. 3575 Kenyon Street, Suite 200 San Diego, CA 92110	N.E.S., Inc. 619 North Cascade Avenue, Suite 200 Colorado Springs, CO 80903

Commissioner District: 2

Planning Commission Hearing Date:	4/18/2024
Board of County Commissioners Hearing Date:	5/9/2024

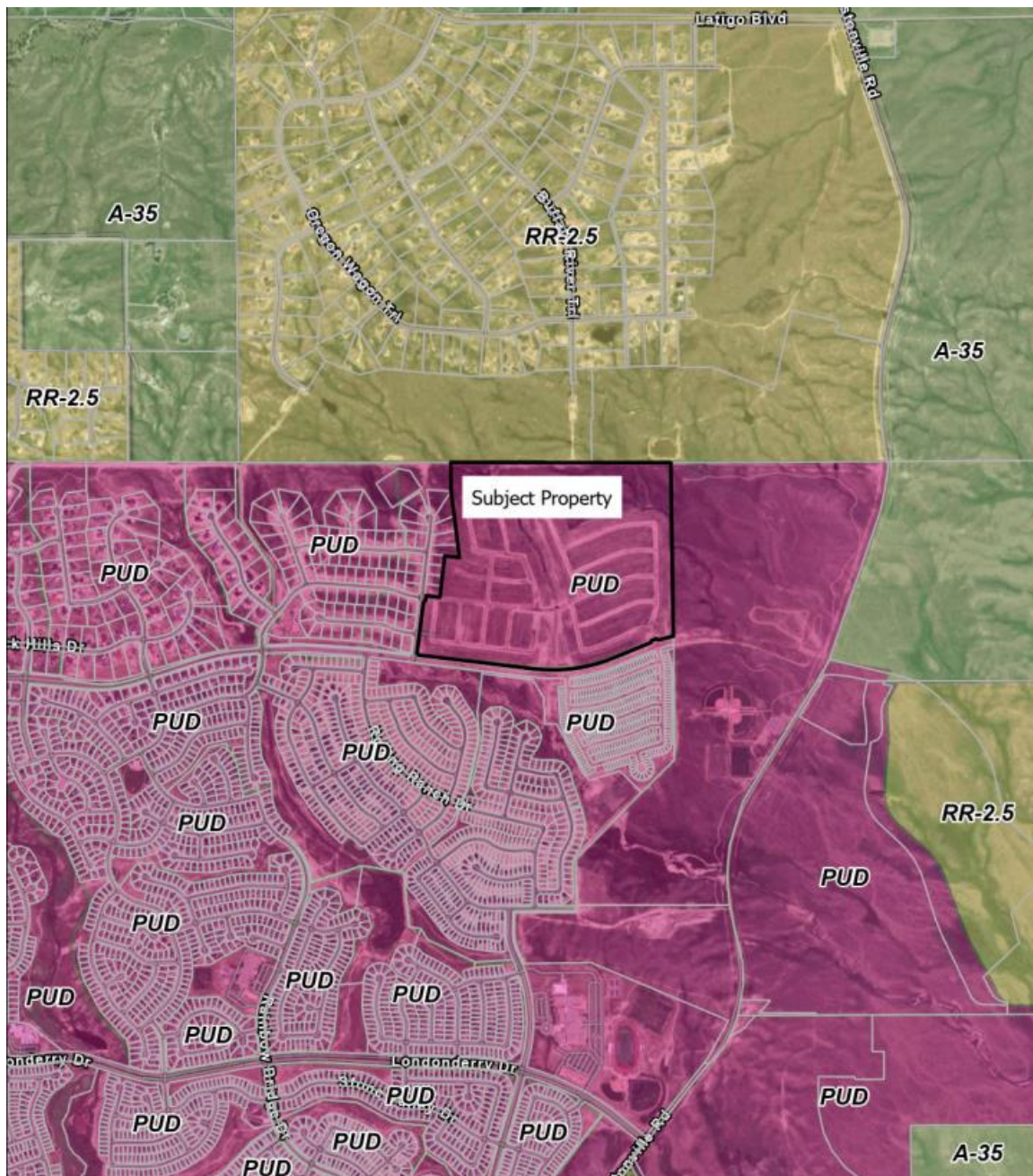
EXECUTIVE SUMMARY

A request by GTL, Inc. for approval of a Map Amendment (Rezoning) of 148.873 acres from a conceptual PUD (Planned Unit Development) to a site-specific PUD (Planned Unit Development) with approval of a Preliminary Plan for 441 single-family residential lots, three (3) tracts, 46 acres of open space, and 24 acres of land dedicated for public right-of-way. The previously approved PUD Development Plan was conceptual in nature and did not contemplate a specific number of lots or a specific layout. The property is located at the eastern end of Rex Road, approximately 1.5 miles east of Meridian Road. The applicant is requesting a finding of water sufficiency with the proposed Preliminary Plan.

2880 INTERNATIONAL CIRCLE
OFFICE: (719) 520 – 6300



COLORADO SPRINGS, CO 80910
PLNWEB@ELPASOCO.COM



Zoning Map

2880 INTERNATIONAL CIRCLE
OFFICE: (719) 520 – 6300



COLORADO SPRINGS, CO 80910
PLNWEB@ELPASOCO.COM

A. AUTHORIZATION TO SIGN: PUD Development Plan and any other documents required to finalize the approval.

B. APPROVAL CRITERIA

The Planning Commission and BoCC shall determine that the following criteria for approval outlined in Section 4.2.6, and Section 7.2.1 of the El Paso County Land Development Code (as amended), have been met to approve a PUD zoning district. The proposed PUD district zoning advances the stated purposes set forth in this section.

- The application is in general conformity with the Master Plan;
- The proposed development is in compliance with the requirements of this Code and all applicable statutory provisions and will not otherwise be detrimental to the health, safety, or welfare of the present or future inhabitants of El Paso County;
- The subject property is suitable for the intended uses and the use is compatible with both the existing and allowed land uses on the neighboring properties, will be in harmony and responsive with the character of the surrounding area and natural environment, and will not have a negative impact upon the existing and future development of the surrounding area;
- The proposed development provides adequate consideration for any potentially detrimental use to use relationships (e.g. commercial use adjacent to single family use) and provides an appropriate transition or buffering between uses of differing intensities both on-site and off-site which may include innovative treatments of use to use relationships;
- The allowed uses, bulk requirements and landscaping and buffering are appropriate to and compatible with the type of development, the surrounding neighborhood or area and the community;
- Areas with unique or significant historical, cultural, recreational, aesthetic or natural features are preserved and incorporated into the design of the project;
- Open spaces and trails are integrated into the development plan to serve as amenities to residents and provide reasonable walking and biking opportunities;
- The proposed development will not overburden the capacities of existing or planned roads, utilities and other public facilities (e.g. fire protection, police protection, emergency services, and water and sanitation), and the required public services and facilities will be provided to support the development when needed;



- The proposed development would be a benefit through the provision of interconnected open space, conservation of environmental features, aesthetic features and harmonious design, and energy efficient site design;
- The proposed land use does not permit the use of any area containing a commercial mineral deposit in a manner which would unreasonably interfere with the present or future extraction of such deposit unless acknowledged by the mineral rights owner;
- Any proposed exception or deviation from the requirements if the zoning resolution or the subdivision regulation is warranted by virtue of the design and amenities incorporated in the development plan and development guide; and
- The owner has authorized the application.

The applicant has requested the proposed PUD also be reviewed and considered as a Preliminary Plan. Compliance with the requirements identified in Chapter 7 and Chapter 8 of the El Paso County Land Development Code (as amended) for a Preliminary Plan requires the Planning Commission and the BoCC shall find that the additional criteria for a Preliminary Plan have also been met.:

- The proposed subdivision is in general conformance with the goals, objectives, and policies of the Master Plan;
- The subdivision is consistent with the purposes of this Code;
- The subdivision is in conformance with the subdivision design standards and any approved sketch plan;
- A sufficient water supply has been acquired in terms of quantity, quality, and dependability for the type of subdivision proposed, as determined in accordance with the standards set forth in the water supply standards [C.R.S. § 30-28-133(6)(a)] and the requirements of Chapter 8 of this Code;
- A public sewage disposal system has been established and, if other methods of sewage disposal are proposed, the system complies with state and local laws and regulations, [C.R.S. § 30-28-133(6) (b)] and the requirements of Chapter 8 of this Code;
- All areas of the proposed subdivision, which may involve soil or topographical conditions presenting hazards or requiring special precautions, have been identified and the proposed subdivision is compatible with such conditions. [C.R.S. § 30-28-133(6)(c)];



- Adequate drainage improvements complying with State law [C.R.S. §30-28-133(3)(c)(VIII)] and the requirements of this Code and the Engineering Criteria Manual (ECM) are provided by the design;
- The location and design of the public improvements proposed in connection with the subdivision are adequate to serve the needs and mitigate the effects of the development;
- Legal and physical access is or will be provided to all parcels by public rights-of-way or recorded easement, acceptable to the County in compliance with this Code and the ECM;
- The proposed subdivision has established an adequate level of compatibility by (1) incorporating natural physical features into the design and providing sufficient open spaces considering the type and intensity of the subdivision; (2) incorporating site planning techniques to foster the implementation of the County's plans, and encourage a land use pattern to support a balanced transportation system, including auto, bike and pedestrian traffic, public or mass transit if appropriate, and the cost effective delivery of other services consistent with adopted plans, policies and regulations of the County; (3) incorporating physical design features in the subdivision to provide a transition between the subdivision and adjacent land uses; (4) incorporating identified environmentally sensitive areas, including but not limited to, wetlands and wildlife corridors, into the design; and (5) incorporating public facilities or infrastructure, or provisions therefore, reasonably related to the proposed subdivision so the proposed subdivision will not negatively impact the levels of service of County services and facilities;
- Necessary services, including police and protection, recreation, utilities, open space and transportation system, are or will be available to serve the proposed subdivision;
- The subdivision provides evidence to show that the proposed methods for fire protection comply with Chapter 6 of this Code; and
- The proposed subdivision meets other applicable sections of Chapter 6 and 8 of this Code.

C. LOCATION

North: RR-2.5 (Residential Rural)	Vacant
South: PUD (Planned Unit Development)	Single-family residential
East: PUD (Planned Unit Development)	County Park
West: PUD (Planned Unit Development)	Single-family residential

2880 INTERNATIONAL CIRCLE
OFFICE: (719) 520 – 6300



COLORADO SPRINGS, CO 80910
PLNWEB@ELPASOCO.COM

D. BACKGROUND

The Meridian Ranch Sketch Plan (PCD file no. SKP-99-006) was originally approved on March 9, 2000. The sketch plan included a maximum of 3,266 dwelling units within the plan area. The Sketch Plan has been subsequently amended as follows: in 2006 the maximum number of dwelling units was increased to 3,275; in 2012 the maximum number of dwelling units was increased to 3,800; in 2014 the maximum number of dwelling units was increased to 3,862; in 2015 the maximum number of dwelling units was increased to 4,000; in 2017 the maximum number of dwelling units was increased to 4,500; and in 2021 the maximum number of dwelling units was increased to 5,000.

A total of 4,559 single-family residential units have been approved or are currently in review in 26 separate Final Plat filings within the Meridian Ranch Sketch Plan area. According to the letter of intent submitted with the proposed PUD Development Plan and Preliminary Plan request, this proposal will maximize the development capacity within the Meridian Ranch Sketch Plan area.

The specific request includes 441 single-family residential units on 148.87 acres for a gross density of 2.96 dwelling units per acre. The current Sketch Plan would allow up to 4 dwelling units per acre for this area.

E. ANALYSIS

1. Land Development Code and Zoning Compliance

The proposed density of approximately 3 single-family residential units per acre is greater than that of properties to the north and west. To the west of the subject property are platted lots within the approved Estates at Rolling Hills Ranch Filing No. 2 subdivision, which is a part of the overall Meridian Ranch Sketch Plan area and has a density of approximately 1.5 dwelling units per acre. To the north of the subject property is vacant land zoned RR-2.5 (Residential Rural), which, if developed, could allow the development of residential lots with a minimum density of one dwelling unit per 2.5 acres. Existing subdivisions in this area to the north of the subject property include the Latigo Trails subdivision, which maintains a minimum residential lot size of 2.5 acres in the RR-2.5 zoning district.

To the south of the subject property is the recently platted Sanctuary Filing No. 1 at Meridian Ranch, which has a residential density of approximately 4.6 dwelling units per acre. The proposed density of approximately 3 dwelling units per acre may be



considered representative of a density transition between the more dense subdivision to the south and the less dense subdivisions to the north and west.

Section 4.2.6.F.8, Planned Unit Development District of the Land Development Code requires a minimum of 10% of the overall residential PUD to be set aside as open space. The Plan incorporates 46 acres of open space and parklands, which comprise approximately 31% of the proposed development area.

The PUD application meets the purpose of zoning and criteria of approval, in Chapter 4, and of the Land Development Code. The Preliminary Plan application meets the Preliminary Plan submittal requirements, the standards for Divisions of Land in Chapter 7, and the standards for Subdivision in Chapter 8 of the Code. The applicant will be required to comply with the standards for Subdivision in Chapter 8 of the Code with subsequent Final Plat applications.

The PUD Development Plan identifies allowed and permitted uses; use, density, and dimensional standards such as setbacks, maximum lot coverage, maximum building height; and overall landscaping requirements. The PUD Development Plan is consistent with the proposed PUD development guidelines and with the submittal and processing requirements of the Land Development Code.

F. MASTER PLAN COMPLIANCE

1. Your El Paso County Master Plan

a. Placetype Character: Large-Lot Residential

The Large-Lot Residential placetype consists almost entirely of residential development and acts as the transition between placetypes. Development in this placetype typically consists of single-family homes occupying lots of 2.5 acres or more, and are generally large and dispersed throughout the area so as to preserve a rural aesthetic. The Large-Lot Residential placetype generally supports accessory dwelling units as well. Even with the physical separation of homes, this placetype still fosters a sense of community and is more connected and less remote than Rural areas. Large-Lot Residential neighborhoods typically rely on well and septic, but some developments may be served by central water and waste-water utilities. If central water and wastewater can be provided, then lots sized less than 2.5 acres could be allowed if; 1.) the overall density is at least 2.5 acres/lot, 2.) the design for development incorporates conservation of open space, and 3.) it is compatible with the character of existing developed areas.

2880 INTERNATIONAL CIRCLE
OFFICE: (719) 520 – 6300



COLORADO SPRINGS, CO 80910
PLNWEB@ELPASOCO.COM

Conservation design (or clustered development) should routinely be considered for new development within the Large-Lot Residential placetype to provide for a similar level of development density as existing large-lot areas while maximizing the preservation of contiguous areas of open space and the protection of environmental features. While the Large-Lot Residential placetype is defined by a clear set of characteristics, the different large-lot areas that exist throughout the County can exhibit their own unique characters based on geography and landscape.

Recommended Land Uses:

Primary

- *Single-family Detached Residential (Typically 2.5-acre lots or larger)*

Supporting

- *Parks/Open Space*
- *Commercial Retail (Limited)*
- *Commercial Service (Limited)*
- *Agriculture*

Analysis:

The property is located within the Large-Lot Residential placetype. The Large-Lot Residential placetype supports the rural character of the County while providing for unique and desirable neighborhoods. Relevant goals and objectives are as follows:

Goal LU1 Specific Strategy – *Ensure appropriate density and use transitions for new development that occurs between differing placetypes.*

Goal HC1 – *Promote development of a mix of housing types in identified areas.*

Objective HC1-5 – *Focus detached housing development in Large-Lot Residential and Suburban Residential areas given the increasing infrastructure and environmental constraints associated with such development to help maintain the established character of rural communities.*

Objective TM1-4 – *Encourage sidewalks and other multimodal facilities in all new development in placetypes, as appropriate, and upgrade existing infrastructure to these types of facilities when maintenance is needed.*

Objective CFI3-5 – *Continue to improve coordination with fire districts, developers, and other groups to ensure that new development provides appropriate fire suppression water supplies and infrastructure.*

2880 INTERNATIONAL CIRCLE
OFFICE: (719) 520 – 6300



COLORADO SPRINGS, CO 80910
PLNWEB@ELPASOCO.COM

Objective CFI3-9 – *Ensure wastewater treatment systems will be properly operated and maintained and that they will not exceed the maximum treatment capacity if future growth is planned.*

Objective E2-2 – *All future water planning efforts should reference the Water Master Plan to ensure alignment with its key policies and recommendations.*

The proposed PUD Development Plan and Preliminary Plan propose an urban-density single-family detached residential development. This is not consistent with the Large-Lot Residential placetype; however, the development is located within the Meridian Ranch Sketch Plan area, which is mostly located within the Suburban Residential placetype and is comprised of development of a similar density and scale to the current proposal. The proposal is consistent with the adjacent Suburban Residential placetype. The PUD identifies sidewalks and open space areas to encourage active use of space. The overall PUD and Sketch Plan incorporate a range of densities and housing types which may be incorporated into future phases of development.

b. Area of Change Designation: Minimal Change: Developed

These areas have undergone development and have an established character. Developed areas of minimal change are largely built out but may include isolated pockets of vacant or underutilized land. These key sites are likely to see more intense infill development with a mix of uses and scale of redevelopment that will significantly impact the character of an area. For example, a large amount of vacant land in a suburban division adjacent to a more urban neighborhood may be developed and change to match the urban character and intensity so as to accommodate a greater population. The inverse is also possible where an undeveloped portion of a denser neighborhood could redevelop to a less intense suburban scale. Regardless of the development that may occur, if these areas evolve to a new development pattern of differing intensity, their overall character can be maintained.

Analysis:

The property is located in an area that is not expected to significantly change in character due to primarily being surrounded by developed land. The level of change proposed with the PUD Development Plan and Preliminary Plan is consistent with the level of change identified in the Minimal Change: Developed Area, as the character of the area is not expected to be transformed; but rather



remaining vacant lands are likely to be developed in a manner compatible with adjacent land uses. This area is adjacent to built-out areas within the Meridian Ranch development, as well as undeveloped land, and public facilities. A relevant specific strategy is as follows:

Goal LU3 Specific Strategy – *The Minimal Change: Developed areas are likely to see more intense infill development with a mix of uses and scale of redevelopment that will significantly impact the character of an area. Regardless of the development that may occur, if these areas evolve to a new development pattern of differing intensity, their overall character should be maintained.*

c. Key Area Influences: The property is not located within a key area.

d. Other Implications (Priority Development, Housing, etc.): The property is not located within a Priority Development Area.

2. Water Master Plan Analysis

The El Paso County Water Master Plan (2018) has three main purposes; to better understand present conditions of water supply and demand; identify efficiencies that can be achieved; and encourage best practices for water demand management through the comprehensive planning and development review processes. Relevant policies are as follows:

Goal 1.1 – *Ensure an adequate water supply in terms of quantity, dependability and quality for existing and future development.*

Goal 1.2 – *Integrate water and land use planning.*

Goal 3.1 – *Promote cooperation among water providers to achieve increased efficiencies on infrastructure.*

Goal 3.6 – *Develop and maintain partnerships with water providers.*

Policy 3.6.2 – *Water providers should work with neighboring entities to provide and plan for growth between their respective boundaries.*

Policy 4.1.4 – *Work collaboratively with water providers, stormwater management agencies, federal agencies, and State agencies to ensure drinking water sources are protected from contamination and meet or exceed established standards.*

2880 INTERNATIONAL CIRCLE
OFFICE: (719) 520 – 6300



COLORADO SPRINGS, CO 80910
PLNWEB@ELPASOCO.COM

Goal 5.1 – *Identify the potential water supply gap at projected full development build-out (2060).*

Policy 5.2.2 – *Recognize the water supply challenges and limitations inherent in each of the regional planning areas, with particular emphasis placed on Regional Planning Area 3 (Falcon), as a result of current reliance on non-renewable Denver Basin wells and the renewable, but limited and over-appropriated, Upper Black Squirrel Creek alluvium.*

Policy 6.0.7 – *Encourage the submission of a water supply plan documenting an adequate supply of water to serve a proposed development at the earliest stage of the development process as allowed under state law. The water supply plan should be prepared by the applicant in collaboration with the respective water provider.*

Policy 6.0.11 – *Continue to limit urban level development to those areas served by centralized utilities.*

The Water Master Plan includes demand and supply projections for central water providers in multiple regions throughout the County. The property is located within Planning Region 3 of the Plan, which is an area anticipated to experience growth by 2040. The following projections are estimations for water demands and supplies in Region 3 for central water providers:

The Plan identifies the current demand for Region 3 to be 4,494 acre-feet per year (AFY) (Figure 5.1) with a current supply of 7,164 AFY (Figure 5.2). The projected demand in 2040 for Region 3 is at 6,403 AFY (Figure 5.1) with a projected supply of 7,921 AFY (Figure 5.2) in 2040. The projected demand at build-out in 2060 for Region 3 is at 8,307 AFY (Figure 5.1) with a projected supply of 8,284 AFY (Figure 5.2) in 2060. This means that by 2060 a deficit of 23 AFY is anticipated by 2060.

The Water Master Plan identifies a potential concern with drawing water from the Denver Basin aquifers by drilling additional wells over time. Section 4.4 of the Plan states:

The Denver Basin aquifers provide a great source of water supply because they are protected from surface contamination and are drought-proof; however, the groundwater levels are declining while the costs to pump water from the aquifers continue to increase.



Meridian Ranch is served by the Meridian Service Metropolitan District. Developments served by centralized utilities can minimize the number of new wells being drilled to access nonrenewable aquifers by utilizing a small number of high-capacity wells. The Plan references a cascading effect whereby additional wells accessing the Denver Basin aquifers are depleting the water levels more quickly than single high-capacity wells resulting in increased cost to draw water as the water levels decline.

The Plan specifically identifies this portion of the Meridian Service Metropolitan District as an anticipated area of development by 2040. The timing of the proposed development is in line with the anticipated growth schedule included in the Plan.

The applicant's water resource report indicates the Meridian Service Metropolitan District has an ample supply of water to serve this development and future developments within the District. Please see the Water section below for a summary of the water findings and recommendations.

3. Other Master Plan Elements

The El Paso County Wildlife Habitat Descriptors (1996) identifies the parcels as having a low wildlife impact potential.

The Master Plan for Mineral Extraction (1996) identifies upland deposits in the area of the subject parcels. A mineral rights certification was prepared by the applicant indicating that, upon researching the records of El Paso County, no severed mineral rights exist.

G. PHYSICAL SITE CHARACTERISTICS

1. Hazards

Geologic hazards and constraints were identified in the vicinity of the proposed Preliminary Plan; however, they are not anticipated to preclude development of the site and can either be mitigated or are proposed to be avoided. Geologic hazard areas are proposed to be located within open space tracts.

2. Floodplain

The property is not located within a defined floodplain as determined from a review of the FEMA Flood Insurance Rate Map panel number 08041C0552G, dated December 7, 2018.



3. Drainage and Erosion

The subdivision is located in the Geick Ranch (CHMS0400) drainage basin. The Geick Ranch drainage basin planning study has not been approved to date and there are no drainage and bridge fees at this time.

The site generally drains to the southeast. Stormwater runoff will be conveyed by public storm sewer systems and discharged into an existing full spectrum detention pond (Pond G) that has been recently constructed with the Rolling Hills Ranch at Meridian Ranch subdivision. Pond G was designed to account for this project and no additional improvements are anticipated to this pond. Pond G is owned and maintained by the Meridian Service Metropolitan District.

Per the associated preliminary drainage report, the development of this project will not adversely affect the downstream properties.

A grading and erosion control plan that identifies construction best management practices (BMPs) to prevent sediment and debris from affecting adjoining properties and the public stormwater system will be required to be submitted with the final plat application(s).

4. Transportation

Access to the development is provided via the extension of Sunrise Ridge Drive from its existing terminus at Estate Ridge Drive and via Rex Road which is currently being constructed with the Sanctuary Filing 1 at Meridian Ranch subdivision. All streets are planned to be public roads and will be dedicated to the County. One deviation request regarding the proposed roadway layout has been approved by the ECM administrator.

The submitted traffic study is consistent with previous traffic studies for recently approved Meridian Ranch subdivisions. Roadway improvements consisting of auxiliary turn lanes along Rex Road have been identified in the traffic study and will be constructed with the Sanctuary Filing 1 subdivision.

The development will be subject to the El Paso County Road Impact Fee Program (Resolution No. 19-471) as applicable for property located within the Woodmen Road Metropolitan District.



H. SERVICES

1. Water

The applicant has shown a sufficient water supply for the required 300-year period. The State Engineer and the County Attorney's Office have recommended that the proposed Preliminary Plan has an adequate water supply in terms of quantity and dependability. El Paso County Public Health has recommended that there is an adequate water supply in terms of quality.

2. Sanitation

Wastewater is provided by Meridian Service Metropolitan District.

3. Emergency Services

The property is within the Falcon Fire Protection District.

4. Utilities

Mountain View Electrical Association (MVEA) currently provides electrical services to properties in the Meridian Ranch development. Black Hills Energy provides natural gas service to properties in Meridian Ranch. MVEA and Black Hills Energy were each sent referrals; MVEA has no outstanding comments and Black Hills Energy did not respond.

5. Metropolitan Districts

The property is within the boundaries of Meridian Service Metropolitan District and Meridian Ranch Metropolitan District, which provide water and wastewater service in addition to maintaining landscaping, open space, and private drainage facilities within Meridian Ranch. The site is also located within the Woodmen Road Metropolitan District, which was established to finance improvements to Woodmen Road. Per Board of County Commissioners Resolution 13-041, property within the Woodmen Road Metropolitan District with Final Plat approvals within the period beginning January 1, 2021, and ending on December 31, 2027, will be subject to payment of traffic impact fees to the County.

6. Parks/Trails

Land dedication and fees in lieu of parkland dedication are not required for a Map Amendment (Rezoning) application. Fees in lieu of parkland dedication will be due at the time of recording the Final Plat.



7. Schools

Land dedication and fees in lieu of school land dedication are not required for a Map Amendment (Rezoning) application. Fees in lieu of school land dedication will be due at the time of recording the Final Plat.

I. APPLICABLE RESOLUTIONS

See attached resolution.

J. STATUS OF MAJOR ISSUES

There are no major issues.

K. RECOMMENDED CONDITIONS AND NOTATIONS

Should the Planning Commission and the Board of County Commissioners find that the request meets the criteria for approval outlined in Section 4.2.6, and Section 7.2.1 of the El Paso County Land Development Code (As Amended), staff recommends the following conditions and notations:

CONDITIONS

1. Development of the property shall be in accordance with this PUD Development Plan. Minor changes in the PUD Development Plan, including a reduction in residential density, may be approved administratively by the Director of the Planning and Community Development Department consistent with the Land Development Code. Any substantial change will require the submittal of a formal PUD Development Plan amendment application.
2. Approved land uses are those defined in the PUD Development Plan.
3. All owners of record must sign the PUD Development Plan.
4. The PUD Development Plan shall be recorded in the office of the El Paso County Clerk & Recorder prior to scheduling any Final Plats for hearing by the Planning Commission. The development guide shall be recorded in conjunction with the PUD Development Plan.
5. Applicable park, school, drainage, bridge, and traffic fees shall be paid to El Paso County Planning and Community Development at the time of Final Plat(s) recordation.
6. Applicant shall comply with all requirements contained in the Water Supply Review and Recommendations, dated 3/19/2024, as provided by the County Attorney's Office.



NOTATIONS

1. Subsequent Final Plat Filings may be approved administratively by the Planning and Community Development Director.
2. If a zone or rezone petition has been disapproved by the Board of County Commissioners, resubmittal of the previously denied petition will not be accepted for a period of one (1) year if it pertains to the same parcel of land and is a petition for a change to the same zone that was previously denied. However, if evidence is presented showing that there has been a substantial change in physical conditions or circumstances, the Planning Commission may reconsider said petition. The time limitation of one (1) year shall be computed from the date of final determination by the Board of County Commissioners or, in the event of court litigation, from the date of the entry of final judgment of any court of record.
3. Rezoning requests not forwarded to the Board of County Commissioners for consideration within 180 days of Planning Commission action will be deemed withdrawn and will have to be resubmitted in their entirety.
4. Preliminary Plans not forwarded to the Board of County Commissioners within 12 months of Planning Commission action shall be deemed withdrawn and shall have to be resubmitted in their entirety.
5. Approval of the Preliminary Plan will expire after two (2) years unless a Final Plat has been approved and recorded or a time extension has been granted.

L. PUBLIC COMMENT AND NOTICE

The Planning and Community Development Department notified 20 adjoining property owners on April 3, 2024, for the Planning Commission and Board of County Commissioner meetings. Responses will be provided at the hearing.

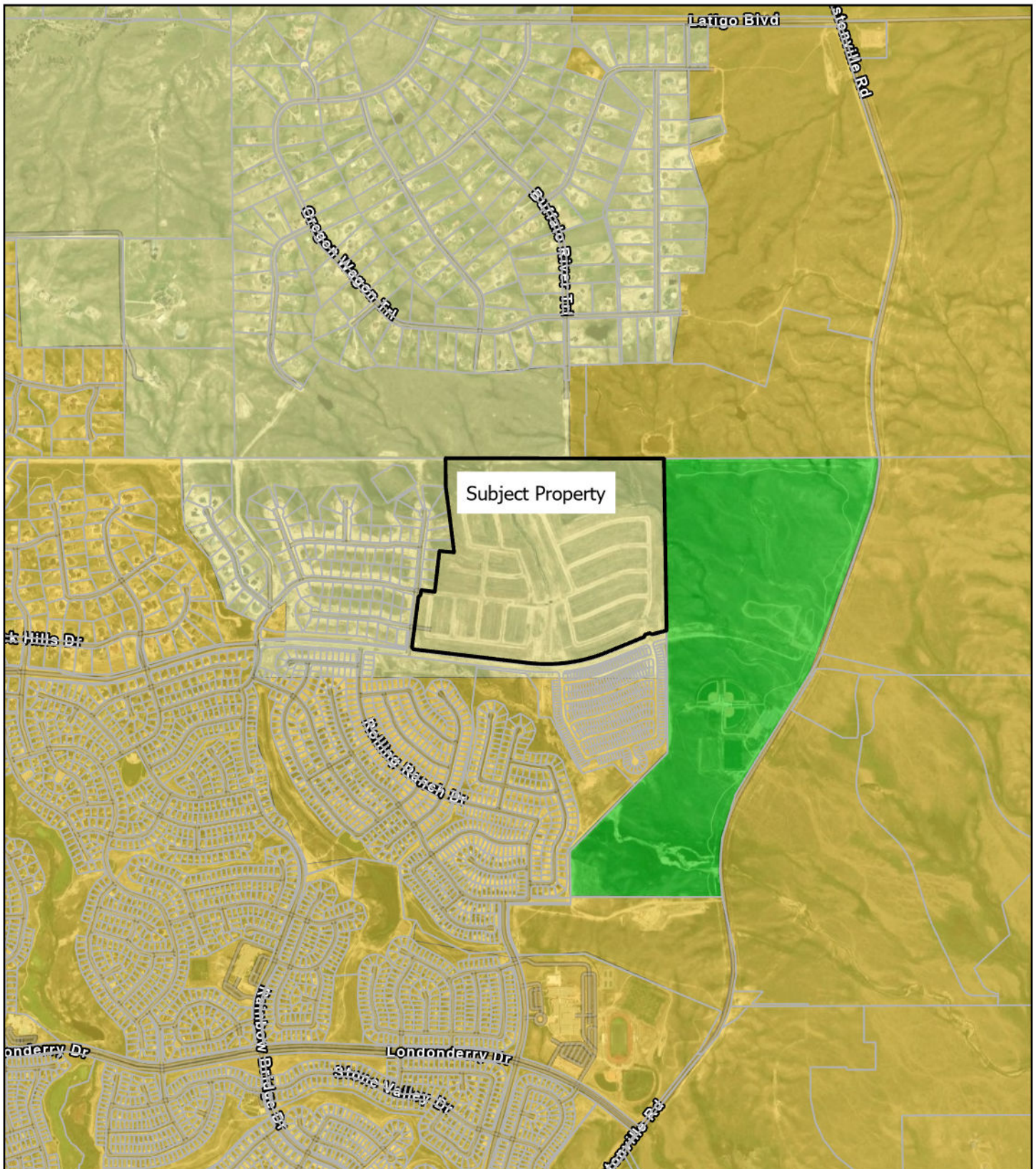
M. ATTACHMENTS

Your El Paso Master Plan Placetype Map
Letter of Intent
PUD Development Plan / Preliminary Plan
State Engineer's Letter
County Attorney's Letter
Draft Resolution

2880 INTERNATIONAL CIRCLE
OFFICE: (719) 520 – 6300



COLORADO SPRINGS, CO 80910
PLNWEB@ELPASOCO.COM



PC Report Packet

Page 17 of 56

Placetype Map

File No. PUDSP235

Map Series No. 1



0 0.1 0.1 0.3 Miles

ROLLING HILLS RANCH NORTH FILINGS 1 & 2 AT MERIDIAN RANCH

PUD DEVELOPMENT / PRELIMINARY PLAN

NOVEMBER 2023 | UPDATED FEBRUARY 2024

PROPERTY OWNER:

MERIDIAN RANCH INVESTMENTS INC.
RAUL GUZMAN
PO BOX 80036
SAN DIEGO, CA 92138
RAUL@TECHBILT.COM
(619) 223-1663

DEVELOPER:

GTL DEVELOPMENT, INC
RAUL GUZMAN
3575 KENYON STREET, SUITE 200
SAN DIEGO, CA 92110
RAUL@TECHBILT.COM
(619) 233-1683

CONSULTANT:

N.E.S. INC.
ANDREA BARLOW
619 NORTH CASCADE AVENUE
COLORADO SPRINGS, CO 80903
ABARLOW@NESCOLORADO.COM
(719) 471-0073

TSN: 4200000477

ADDRESS: MERIDIAN RANCH

ACREAGE: 148.873 AC

CURRENT ZONING: PUD

CURRENT USE: VACANT LAND

FILE #: PUDSP235

REQUEST

GTL Inc. is requesting approval of the following applications:

1. A PUD Development/Preliminary Plan for Rolling Hills Ranch North Filings 1 & 2 at Meridian Ranch, consisting of 441 single-family dwelling lots, landscaping, open space, and trails on approximately 149 acres.
2. The following PUD Modifications for Rolling Hills Ranch North Filings 1 & 2 at Meridian Ranch.

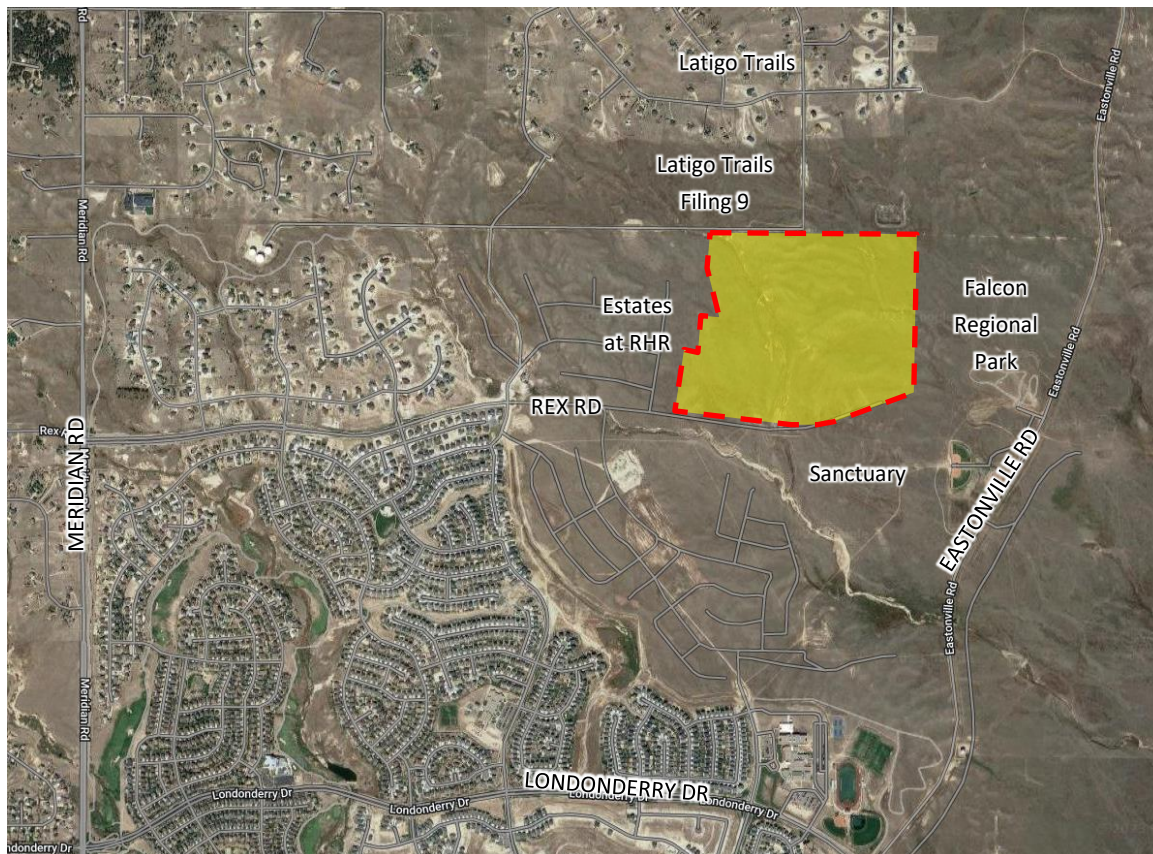
LDC/ECM Section	Category	Standard	Modification	Justification
ECM Section 2.5.2.C.4	Mid-block crossings	Access ramps on local roadways shall be spaced no greater than 600 feet apart.	The deviation would remove the mid-block pedestrian crossing requirement on the following streets: Chalk Cliffs Dr, Lava Falls Dr, Crystal Falls Dr, and House Rock Dr.	<ul style="list-style-type: none">• Sidewalks on both sides of these streets provide adequate pedestrian access to crossing ramps at the nearest street intersection.• There are no destinations or trails that would necessitate a mid-block crossing on these streets.• The subdivision design intentionally limits the use of mid-block pedestrian crossings as they can create safety hazard to pedestrians.

				<ul style="list-style-type: none"> • The omission of mid-block crossings allows for a continuous and uninterrupted attached sidewalk through the neighborhood. • There are no Federal ADA maximum distances allowed between pedestrian crossings that would necessitate midblock pedestrian ramps.
--	--	--	--	--

Chapter 4.2.6.F.2.h of the Land Development Code (LDC) allows for a PUD modification of a general development standard in the LDC or criteria of the Engineering Criteria Manual (ECM). The justification for the PUD Modification is provided at the end of this Letter of Intent.

LOCATION

Rolling Hills Ranch North Filings 1 & 2 at Meridian Ranch is located north of Rex Road and west of the Falcon Regional Park. The site comprises approximately 149 acres and is zoned PUD. To the west is the Estates at Rolling Hills Ranch residential subdivision. To the south is the recently approved Sanctuary at Meridian Ranch PUD, with a density of 4.6 du/ac. To the north is the Latigo Trails 2.5-acre lot rural residential subdivision. Latigo Trails Filing 9, immediately north of Rolling Hills Ranch North, was approved by the Board of County Commissioners in June 2023.



PROJECT JUSTIFICATION

Consistency with Approved Sketch Plan

An amendment to the Sketch Plan for Meridian Ranch was approved by the Board of County Commissioners on August 5th, 2021. The approved Sketch Plan includes a residential density cap of 5,000 lots. Rolling Hills Ranch North Filings 1 & 2 is the last remaining residential subdivision within Meridian Ranch. Approval of this PUD Development/Preliminary Plan for 441 lots will maximize the residential density within Meridian Ranch at 5,000 lots as approved by the Sketch Plan.

The Sketch Plan designates the area comprising the Rolling Hills Ranch North Filings 1 & 2 at Meridian Ranch as MR-R4 (max. 4 du/ac). The PUD Development/Preliminary Plan for Rolling Hills Ranch North Filings 1 & 2 comprises 441 lots on approximately 149 acres, which represents a gross density of 3 dwellings per acre, well below the maximum of 4 du/ac. The Sketch Plan identifies an open space buffer across the northern boundary of the property to provide a transition to the rural residential development to the north. This buffer is provided as part of Tract A on the PUD/Preliminary Plan, which extends the entire length of the northern boundary and has a minimum width of 410 feet. The open space tract also includes a County regional trail as a continuation of the regional trail already provided within Meridian Ranch to the east. This remaining trail section completes the connection to Falcon Regional Park to the east.

County Master Plan Compliance

Your El Paso County Master Plan

Meridian Ranch is primarily identified as a Suburban Residential placetype on the County Master Plan adopted in May 2021, which assumes a primary land use of single-family detached residential with lot sizes smaller than 2.5 acres per lot, up to 5 units per acre. However, the area covered by the proposed Rolling Hills Ranch North Filings 1 & 2 PUD and adjacent Estates at Rolling Ranch Filing 2 are identified as Large-Lot Residential placetype, which assumes a primary land use of single-family detached residential, typically 2.5-acre lots or larger. These parcels have been identified for 1-acre lot development since the 2011 approval of the Meridian Ranch Sketch Plan, and the Rolling Hills Ranch North area was amended to 4 du/ac density in 2021. Identifying these areas as Large-Lot Residential placetype does not reflect the approved Sketch Plan, which takes precedent over the more recently approved County Master Plan.

This analysis therefore assumes that Rolling Hills Ranch North was intended to be designated Suburban Residential Placetype on the master plan placetypes map, consistent with the remainder of Meridian Ranch. The primary land use in the Suburban Residential placetype is detached single-family land uses with lot sizes smaller than 2.5 acres per lot, up to 5 units per acre. Supporting land uses include Single-family Attached, Multifamily Residential, Parks/Open Space, Commercial Retail, Commercial Service, and Institution. Rolling Hills Ranch North proposes single-family detached residential development at a density of 3 du/ac, with supportive open space and trails, which is consistent with the placetype land use objectives.

Characteristics of the Suburban Placetype include connectivity to trails, hiking paths, and bike lanes to provide access to parks, open space, other neighborhoods, jobs, and services. Neighborhood scale parks and open space should be distributed throughout the residential development to support community gathering and recreation. Rolling Hills Ranch North is an integral part of Meridian Ranch and is a continuation of a long-term development with a distinct vision. The Meridian Ranch community centers on a recreational lifestyle by providing opportunities such as a golf course, recreation center, parks and open space, and trails for residents to enjoy. Overall, Meridian Ranch common landscape elements such as fencing, street tree plantings, landscaping, and signage will establish a unique sense of place for this development. The recreation center and neighborhood parks are located in areas of higher density to provide accessible focal elements for the neighborhoods.

In the Areas of Change chapter of the County Master Plan, Rolling Hills Ranch North is identified as a “Minimal Change: Developed.” The plan notes that these areas have undergone development and have an established character. Developed areas of minimal change are largely built out but may include isolated pockets of vacant or underutilized land. These key sites are likely to see more intense infill development with a mix of uses and scale of redevelopment that will significantly impact the character of an area. Rolling Hills Ranch North is the only remaining unplatted residential development parcel within Meridian Ranch. The development of the parcel in a manner consistent with the Sketch Plan and the established character of Meridian Ranch is anticipated by this Area of Change designation.

The Rolling Hills Ranch North Filings 1 & 2 PUD aligns with Core Principle 2, Housing & Communities, which seeks to “preserve and develop neighborhoods with a mix of housing types” as well as Goal 2.3 to “locate attainable housing that provides convenient access to goods, services, and employment”. The development provides an average 0.25-acre lot size, which adds to the overall variety of housing options and price points available Meridian Ranch.

Core Principle 1, Land Use and Development, which seeks to “manage growth to ensure a variety of compatible land uses that preserve all character areas of the county.” Goal 1.1 seeks to “ensure compatibility with established character and infrastructure capacity.” The proposed 0.25-acre lot size and preservation of the large open space buffer on the north side of the PUD ensures consistency with these goals by providing a buffer to ensure compatibility between the higher density development within Meridian Ranch south of Rex Road and the rural residential development to the north.

Objective TM1-4, Transportation and Mobility, encourage sidewalks and other multimodal facilities in all new development. The PUD integrates open space and trails to provide recreation opportunities and connection to adjacent neighborhoods. It is part of the larger Meridian Ranch community which promotes extensive interconnected opens spaces and parks throughout the development.

El Paso County Water Master Plan

The project is located within Region 3, Falcon Area, containing 4 growth areas projected to be completed by 2040, three areas to be completed by 2060, and two other growth areas located on the north and south sides of Falcon Highway directly east of Falcon. Specifically, the Water Master Plan states:

“Region 3 contains four growth areas west of Falcon projected to be completed by 2040. Other areas of 2040 growth are projected for the north-central part of the region west of Highway 24 extending from Falcon to 4-Way Ranch. North of Falcon along Highway 24, growth is projected by 2060 on both sides of the highway. Just west of Falcon, another small development is projected by 2060 on the north and south sides of Woodmen Road. On the east side of Highway 24, three separate areas of growth are projected for development by 2060, with the largest of the three spanning from south of Judge Orr Road to east of Peyton Highway into Region 4c. This development will likely consist of 35-acre lots that will require individual wells to use Denver Basin groundwater. The other two growth areas will be located on the north and south sides of Falcon Highway directly east of Falcon. See Figure 5.5 for Region 3 growth map projections.”

The proposed subdivision lies within the Meridian Service Metropolitan District (MSMD) service area. The Water Resources Report indicates that MSMD has sufficient supply to meet the expected need at full build out by 2040 and 2060. Region 3 has a current water supply of 7,164-acre feet per year and a current demand of 4,494-acre feet per year. The 2040 water supply is projected to be 7,921-acre feet per year and the project demand is 6,403-acre feet. As stated in the Water Resources Report, this development is projected to need 137-acre feet of water per year and a planning need of 1,902 -acre feet per year. Current supply is 2,062-acre feet on a 300-year basis.

MSMD currently incorporates a 15% reserve into their future planning. Based on the needs, current supply, and reserve, the District has sufficient water to meet the needs expected now and into the future with no shortages anticipated. The District’s current use is based on an average of 20% renewable water sources and is actively seeking renewable sources and replacement sources with Cherokee Metro Water District to date.

The MSMD service area is located in the Upper Black Squirrel Creek Groundwater Management District and the water bearing formations in descending stratigraphic order are the Dawson, Denver, Arapahoe, and Laramie Fox Hills. These four aquifers are collectively known as the Denver Basin aquifers and are found approximately at depths of 500, 1,400, 1,900, and 2,500 feet below the ground surface. MSMD currently services over 15,500 in equivalent population in several filings within Meridian Ranch, Falcon High School and portions of Latigo Trails as an out of district user. The water system that serves Meridian Ranch is classified as a “public water system” and meets all the applicable requirements of the CDPHE.

The water system uses groundwater as its primary source of supply. Filtration and disinfection facilities have been constructed at a central location to ensure good water quality. Elevation differences that exist throughout the property require that the distribution system is divided into two pressure zones to ensure that the water is delivered at no less than 40 psi during peak hour flow and at no more than 120 psi during periods of low use. Storage facilities and distribution piping are provided to ensure that the residual pressure requirements are achieved both during peak hour demands and during maximum day demands with a superimposed fire flow of 1500 gpm for the residential areas and up to 3500 gpm for commercial areas.

The proposed residential subdivision satisfies the following policies of the County Water Master Plan:

Policy 5.2.4 – Encourage the locating of new development where it can take advantage of existing or proposed water supply projects that would allow shared infrastructure costs.

The proposed subdivision is located within MSMD and a commitment letter noting the District’s ability to serve the proposed development in an efficient manner with the current infrastructure has been provided.

Policy 5.5.1 – Discourage individual wells for new subdivisions with 2.5 acre or smaller average lot sizes, especially in the near-surface aquifers, when there is a reasonable opportunity to connect to an existing central system, alternatively, or construct a new central water supply system when the economies of scale to do so can be achieved.

The proposed development is located within the MSMD service area and is proposed to connect to the existing central water and wastewater. A service commitment letter is provided for the proposed development.

Policy 6.0.1 – Continue to require documentation of the adequacy or sufficiency of water, as appropriate, for proposed development.

The accompanying Water Resources Report demonstrates an adequate supply of water in terms of quantity, quality and dependability to meet El Paso County’s the 300-year requirement.

El Paso County Parks Master Plan (Updated 2022)

Falcon Regional Park is identified as a new regional park in the Master Plan. This park was dedicated to the County by the owners and developers of Meridian Ranch. All regional park fees are offset by the dedication of this land to the County per the overall Parks Land Agreement for Meridian Ranch.

The Arroya Lane Regional Trail is identified as a 5.38 mile proposed primary regional trail that is 29% complete. Part of that trail runs through the northern section of Meridian Ranch. The western portion has either been constructed or platted with previous subdivisions. The remaining trail section in Rolling Hills Ranch North will complete the regional trail through Meridian Ranch and provides a continuous connection to the adjacent Falcon Regional Park.

El Paso County Major Transportation Corridor Plan (MTCP)

Rex Road to the south of the proposed Rolling Hills Ranch North subdivision, and Eastonville Road to the on the east boundary of Meridian Ranch, are identified as minor arterials on the 2040 Functional classification map of the MTCP. Planned improvements to these roads by 2040 are identified in Table 4:

- A new extension of Rex Road through Meridian Ranch as a 2-lane urban collector.
- Eastonville Road upgrade from unimproved county road to a 2-lane minor arterial.

The construction of Rex Road as an Urban 2-Lane Minor Arterial from the Rolling Ranch Drive to Shelter Creek Drive was included as part of the Sanctuary at Meridian Ranch approved PUD/Preliminary Plan and Final Plat. As agreed with the El Paso County Engineer, the approved design is for a half-section of the Urban Minor Arterial street-section, as the projected long-term (2040) traffic volumes are less than originally anticipated by the MTCP. The half section roadway will be constructed within an 80-foot right of way with a 20-foot right-of-way reservation is identified in Tract A on the Sanctuary at Meridian Ranch PUD and Plat in order to accommodate the future full width section when the County determines it is necessary. The portion of Rex Road within Falcon Regional Park is under construction, which will complete the connection between Meridian Road and Eastonville Rd.

Parks and Open Space

Rolling Hills Ranch North includes 46 acres of open space tracts with trail connections to the extensive trail, parks and open space system within Meridian Ranch. The northern open space tract includes a County regional trail as a continuation of the regional trail already provided within Meridian Ranch to the east. This remaining trail section completes the connection to Falcon Regional Park to the east.

The proposed 46 acres of open space for the project substantially exceeds the 10% requirement for open space within PUDs as noted in LDC Chapter 4.2.6.F.8b (10% of 149 acres is a requirement of 14.9 acres). The subdivision also exceeds the LDC requirement that 25% of the 10% total open space be contiguous and usable: 25% of 14.9 acres is a requirement of 3.7 acres; Filing 2 Tract A of the subdivision provides a contiguous and usable area with trails totaling 39 acres.

As required by Section 8.5.3 of the Land Development Code, the fees in lieu of park land dedication are currently \$295 per subdivision lot for Urban Parks and \$467 per subdivision lot for Regional Parks. The required fees in lieu of for this project are:

Urban	\$130,095
Regional	\$205,947
Total	\$336,042

The regional park fees are offset by the dedication of land to the County for the Falcon Regional Park per the overall Parks Land Agreement for Meridian Ranch. Credit for the urban park fees will be requested through a Parks Land Agreement at the time of the final plat to offset the costs of construction the proposed trail and landscape improvements within the open space tracts.

Drainage

A Preliminary Drainage Report for Rolling Hills Ranch North is submitted with this application package. The site is located within the Gieck Ranch Drainage Basin. The storm drain runoff will be collected by a series of inlets and storm drainpipe then conveyed through the project and discharge into an existing natural drainage course continuing into existing Pond G that is properly sized to safely convey the storm water flows away from the project without damaging adjacent property. A water quality facility is located on the south boundary of the project at Rex Rd. Runoff will be collected by the proposed storm

drainage system and diverted through the water quality facility to allow for suspended solids to settle from the stormwater prior to being discharge downstream of Rex Rd.

Traffic

A Traffic Report prepared by LSC is submitted in support of this application. This study is in keeping with past approved traffic studies and shows that no significant changes were projected for the improvements noted in the recent 2021 Sketch Plan study which had identified the proposed development densities. The future extension of Rex Road abuts the southern boundary of Rolling Hills Ranch North. The construction of Rex Road as a half-section Urban 2-Lane Minor Arterial from Rolling Ranch Drive to Shelter Creek Drive was included as part of the Sanctuary at Meridian Ranch approved PUD/Preliminary Plan and Final Plat immediately to the south of Rex Road. This section of Rex Road is under construction and is expected to be open to the public in Spring 2024. All subdivision streets will be classified as urban local residential roads and two points of access onto Rex Road are provided at Shelter Creek Drive to the east and via a connection to Estate Ridge Drive in Estates at Rolling Hills Ranch Filing 2.

Geotechnical Report

A Geotechnical and Soils Report prepared by Entech Engineering Inc. is submitted in support of this application. The report notes that consideration should be given to several conditions on this site in planning and excavating the development including groundwater, expansive soils and sandstone/claystone materials. While groundwater should not impact the development of this site, procedures and equipment to mitigate groundwater impact during and after construction may be necessary. An underdrain system can be considered for long term groundwater mitigation. Expansive soils [clayey sand, claystone, and sandy clay] are present on the site exhibiting low to moderate potential for expansion and consolidation. These soils, where encountered, will require mitigation for residential construction such as moisture treatments and overexcavation. Sandstone and claystone were encountered at shallow depths across the site and is expected to be exposed upon completion of site grading. Track type equipment likely will be needed to accomplish excavations particularly where harder materials or lenses are present.

Utilities

Meridian Service Metropolitan District will provide central water and sanitary sewer service to the project. Mountain View Electric Association, Inc. will supply electricity service and Black Hills Energy will supply natural gas.

Wildlife

Rolling Hills Ranch North is in a developing area and there is no significant impact to wildlife. As noted in the Impact Identification Report for the 2009 Meridian Ranch Sketch Plan, the property was assessed for Preble's Meadow Jumping Mouse and Ute Ladies'-tresses Orchid habitat but was found to be unsuitable for these threatened species. The U.S. Fish and Wildlife Service reviewed the studies and agreed with these findings.

The Colorado Division of Wildlife Impact Maps indicated that Pronghorn Antelope and other species may range within the Sketch Plan area. Pronghorn Antelope are rated as being subject to potentially moderate impacts from the effects of development. The two drainage corridors within the Meridian Ranch Sketch Plan allow for the migration of the Pronghorn Antelope and other wildlife. The fencing used within Meridian Ranch is compatible with the wildlife needs.

CRITERIA FOR APPROVAL

Chapter 4.2.6.D of the LDC allows the combination of a preliminary plan with a PUD development plan, provided all review and approval standards for both the PUD development plan and preliminary plan are met. The PUD/Preliminary Plan for Rolling Hills Ranch North is consistent with the PUD zoning and preliminary plan approval criteria set forth in Chapter 4.2.6.D & 4.2.6.E of the LDC as follows:

PUD Zoning:

- **The application is in general conformity with the Master Plan;**

The proposed application conforms to the most recent 2021 Approved Sketch Plan and County Master Plan as noted above.

- **The proposed development is in compliance with the requirements of this Code and all applicable statutory provisions and will not otherwise be detrimental to the health, safety, or welfare of the present or future inhabitants of El Paso County;**

The proposed development is in compliance with all County Code requirements and applicable statutory provisions, other than the following: a PUD modification and deviation to ECM Section 2.5.2.C.4 is submitted to remove the requirement for a mid-block pedestrian crossing requirement on the certain streets within the subdivision; and an alternative landscape plan is also requested to reduce the tree planting requirement on Rex Road to accommodate future widening plans. The justification for these code section waivers is provided at the end of the Letter of Intent.

The proposed development provides needed housing, adequate access to services, infrastructure and beneficial active community open space opportunities which will promote the health, safety and welfare of the existing and future residents of El Paso County.

- **The subject property is suitable for the intended uses and the use is compatible with both the existing and allowed land uses on the neighboring properties, will be in harmony and responsive with the character of the surrounding area and natural environment; and will not have a negative impact upon the existing and future development of the surrounding area;**

The proposed development is suitable for the intended land use and conforms to the approved 2021 Sketch Plan amendment. The residential land use is compatible with the residential land use of the neighboring properties. The proposed 0.25-acre lot size and large open space tract on the north side of the PUD creates a buffer between the higher density development within Meridian Ranch south of Rex Road and the rural residential development to the north.

- **The proposed development provides adequate consideration for any potentially detrimental use to use relationships (e.g. commercial use adjacent to single family use) and provides an appropriate transition or buffering between uses of differing intensities both on-site and off-site which may include innovative treatments of use to use relationships;**

The Sketch Plan identifies a 21-acre, 335-foot wide open space buffer across the northern boundary of the property to provide a buffer between the rural residential development to the north. This buffer is provided as part of Tract A on the PUD/Preliminary Plan, which extends the entire length of the northern boundary and is 33 acres and has a minimum width of approximately 410 feet. The open space buffer proposed in this PUD exceeds the Sketch Plan requirement of 335 feet.

- **The allowed uses, bulk requirements and required landscaping and buffering are appropriate to and compatible with the type of development, the surrounding neighborhood or area and the community;**

As noted above, Tract A on the PUD/Preliminary Plan provides a buffer to the rural residential development to the north, which extends the entire length of the northern boundary and has a minimum width of 410 feet. An alternative landscape plan is requested to reduce the tree planting requirement on Rex Road to accommodate future widening plans. Additional planting is provided interior to the site to compensate for this reduction. The justification for this code section waiver is provided at the end of the Letter of Intent.

- **Areas with unique or significant historical, cultural, recreational, aesthetic or natural features are preserved and incorporated into the design of the project;**

No areas with unique or significant historical, cultural, recreational, aesthetic or natural features exist on site. Minor drainageways are located on the northern portion of the property and these are primarily contained within proposed open space tracts. The drainageway running through the property north to south has been regraded to capture and carry stormwater flows to the water quality pond adjacent to Rex Road.

Recreational open space opportunities are consistently incorporated into the Meridian Ranch development for a consistent and growing community need. Tract A provides open space and local trails and contuse the regional trail connection to Falcon Regional Park.

- **Open spaces and trails are integrated into the development plan to serve as amenities to residents and provide a reasonable walking and biking opportunities;**

The proposed Open Space for the project is 46 which equates to 31% of the total PUD area, exceeding the 10% requirement as noted in the Land Development Code Chapter 4.2.6.F.8b. The usable and contiguous open space also exceeds the 25% requirement in the LDC.

- **The proposed development will not overburden the capacities of existing or planned roads, utilities and other public facilities (e.g., fire protection, police protection, emergency services,**

and water and sanitation), and the required public services and facilities will be provided to support the development when needed;

Infrastructure from the Meridian Service Metropolitan District provides central water and sanitary sewer service to the project. Mountain View Electric Association, Inc. will supply electricity service and Black Hills Energy will supply natural gas.

- **The proposed development would be a benefit through the provision of interconnected open space, conservation of environmental features, aesthetic features and harmonious design, and energy efficient site design;**

The proposed development includes a 33-acre open space tract that provides regional and local trail connections. Recreational open space opportunities are consistently incorporated into the Meridian Ranch development to meet the needs of this growing community.

- **The proposed land use does not permit the use of any area containing a commercial mineral deposit in a manner which would unreasonably interfere with the present or future extraction of such deposit unless acknowledged by the mineral rights owner;**

The proposed development does not propose or permit the use of land for mineral extraction.

- **Any proposed exception or deviation from the requirements of the zoning resolution or the subdivision regulations is warranted by virtue of the design and amenities incorporated in the development plan and development guide;**

A PUD modification/deviation is requested from ECM Section 2.5.2.C.4 relating to mid-block crossings and the requirement for access ramps on local roadways to be spaced no greater than 600 feet apart. The deviation request is to waive the need for mid-block pedestrian crossings on the following streets: Chalk Cliffs Dr, Lava Falls Dr, Crystal Falls Dr, and House Rock Dr. The omission of mid-block crossings creates a more pleasing design aesthetic as it creates a continuous and uninterrupted attached sidewalk through the neighborhood. There are no destinations or trails that would necessitate a mid-block crossing on these streets. Sidewalks on both sides of these streets provide adequate pedestrian access to crossing ramps at the nearest street intersection.

- **The owner has authorized the application.**

Application is being submitted by the current landowner and developer.

Preliminary Plan:

The Preliminary Plan is consistent with the approval criteria in Section 7.2.1.D.2.e of the LDC as follows:

- **The proposed subdivision is in general conformance with the goals, objectives, and policies of the Master Plan;**

The proposed application conforms to the most recent 2021 Approved Sketch Plan and County Master Plans as noted above.

- **The subdivision is consistent with the purposes of this Code;**

The proposed development is in compliance with all County Code requirements and applicable statutory provisions and not detrimental to the health, safety and welfare of the inhabitants of El Paso County.

- **The subdivision is in conformance with the subdivision design standards and any approved sketch plan;**

An amendment to the Sketch Plan for Meridian Ranch was approved by the Board of County Commissioners on August 5th, 2021. The approved Sketch Plan includes a residential density cap of 5,000 lots. Rolling Hills Ranch North Filings 1 & 2 is the last remaining residential subdivision within Meridian Ranch. Approval of this PUD Development/Preliminary Plan for 441 lots will maximize the residential density within Meridian Ranch at 5,000 lots as approved by the Sketch Plan.

The Sketch Plan designates the area comprising the Rolling Hills Ranch North Filings 1 & 2 at Meridian Ranch as MR-R4 (max. 4 du/ac). The PUD Development/Preliminary Plan for Rolling Hills Ranch North comprises 441 lots on approximately 149 acres, which represents a gross density of 3 dwellings per acre. The Sketch Plan identifies an open space buffer across the northern boundary of the property to provide a transition to the rural residential development to the north. This buffer is provided as part of Tract A on the PUD/Preliminary Plan, which extends the entire length of the northern boundary and has a minimum width of 410 feet. The open space tract also includes a County regional trail as a continuation of the regional trail already provided within Meridian Ranch to the east. This remaining trail section completes the connection to Falcon Regional Park to the east.

The PUD Development/Preliminary Plan for Rolling Hills Ranch North conforms with all subdivision design standards, subject to approval of a requested PUD modification/deviation from ECM Section 2.5.2.C.4 relating to mid-block crossings and the requirement for access ramps on local roadways to be spaced no greater than 600 feet apart. An alternative landscape plan is also requested to reduce the tree planting requirement on Rex Road to accommodate future widening plans. The justification for these code section waivers is provided at the end of the Letter of Intent.

- **A sufficient water supply has been acquired in terms of quantity, quality, and dependability for the type of subdivision proposed, as determined in accordance with the standards set forth in the water supply standards [C.R.S. §30-28-133(6)(a)] and the requirements of Chapter 8 of this Code;**

Meridian Service Metropolitan District will provide central water to the project. The District has a sufficient water supply as identified in the accompanying Water Resources Report.

- **A public sewage disposal system has been established and, if other methods of sewage disposal are proposed, the system complies with state and local laws and regulations, [C.R.S. §30-28-133(6)(b)] and the requirements of Chapter 8 of this Code.**

Meridian Service Metropolitan District will provide sanitary sewer service to the project. The District has an established sewage disposal facility. The current capacity allocated to MSMD at the PBHWTP

is 0.086 MGD and the total capacity available at the BSWTF is 2.2 MGD for a total of just under 2.3 MGD. The available capacity of the wastewater treatment facilities is sufficient to accept the anticipated flows from Meridian Ranch at full build-out.

- **All areas of the proposed subdivision, which may involve soil or topographical conditions presenting hazards or requiring special precautions, have been identified and the proposed subdivision is compatible with such conditions. [C.R.S. §30-28-133(6)(c)];**

A Geotechnical and Soils Report prepared by Entech Engineering Inc. is submitted in support of this application. The report notes that consideration should be given to several conditions on this site in planning and excavating the development including groundwater, expansive soils and sandstone/claystone materials. These conditions can be mitigated by established engineering methods.

- **Adequate drainage improvements complying with State law [C.R.S. §30-28- 133(3)(c)(VIII)] and the requirements of this Code and the ECM are provided by the design;**

A Preliminary Drainage Report for Rolling Hills Ranch North is submitted with this application package. The site is located within the Gieck Ranch Drainage Basin. The storm drain runoff will be collected by a series of inlets and storm drain pipe then conveyed through the project and discharge into an existing natural drainage course continuing into existing Pond G that is properly sized to safely convey the storm water flows away from the project without damaging adjacent property. A water quality facility is located on the south boundary of the project at Rex Rd. Runoff will be collected by the proposed storm drainage system and diverted through the water quality facility to allow for suspended solids to settle from the stormwater prior to being discharge downstream of Rex Rd.

- **The location and design of the public improvements proposed in connection with the subdivision are adequate to serve the needs and mitigate the effects of the development;**

A Traffic Report prepared by LSC is submitted in support of this application. This study is in keeping with past approved traffic studies and shows that no significant changes were projected for the improvements noted in the recent 2021 Sketch Plan study which had identified the proposed development densities. The future extension of Rex Road abuts the southern boundary of Rolling Hills Ranch North. The construction of Rex Road as a half-section Urban 2-Lane Minor Arterial from Rolling Ranch Drive to Shelter Creek Drive was included as part of the Sanctuary at Meridian Ranch approved PUD/Preliminary Plan and Final Plat immediately to the south of Rex Road. All subdivision streets will be classified as urban local residential roads and two points of access onto Rex Road are provided at Shelter Creek Drive to the east and via a connection to Estate Ridge Drive in Estates at Rolling Hills Ranch Filing 2.

- **Legal and physical access is or will be provided to all parcels by public rights-of-way or recorded easement, acceptable to the County in compliance with this Code and the ECM;**

All lots will be accessible by new public streets that comply with the LDC and ECM.

- **The proposed subdivision has established an adequate level of compatibility by**

- a. **incorporating natural physical features into the design and providing sufficient open spaces considering the type and intensity of the subdivision;**

There are no natural physical features on the site. The Rolling Hills Ranch North PUD includes substantially more than required by Code.

- b. **incorporating site planning techniques to foster the implementation of the County's plans, and encourage a land use pattern to support a balanced transportation system, including auto, bike and pedestrian traffic, public or mass transit if appropriate, and the cost-effective delivery of other services consistent with adopted plans, policies and regulations of the County;**

Appropriate provision is made in this regard given the context of the site and surrounding area. Sidewalks and trails are included throughout the subdivision and connect to the surrounding trails, open space, recreational facilities and neighborhoods within Meridian Ranch and to Falcon Regional Park.

- c. **incorporating physical design features in the subdivision to provide a transition between the subdivision and adjacent land uses;**

The Sketch Plan identifies a 21-acre open space buffer across the northern boundary of the property to provide a transition to the rural residential development to the north. This buffer is provided as part of Tract A on the PUD/Preliminary Plan, which extends the entire length of the northern boundary and has a minimum width of 410 feet. The

- d. **incorporating identified environmentally sensitive areas, including but not limited to, wetlands and wildlife corridors, into the design; and**

There are no environmentally sensitive areas on the property.

- e. **incorporating public facilities or infrastructure, or provisions therefore, reasonably related to the proposed subdivision so the proposed subdivision will not negatively impact the levels of service of County services and facilities;**

The road, utility, stormwater and parks infrastructure for Meridian Ranch is already established or approved with previous subdivision.

- **Necessary services, including police and fire protection, recreation, utilities, open space and transportation systems, are or will be available to serve the proposed subdivision;**

The road, utility, stormwater and parks infrastructure for Meridian Ranch is already established or approved with previous subdivision. Meridian Service Metropolitan District will provide central water and sanitary sewer service to the project. Mountain View Electric Association, Inc. will supply

electricity service and Black Hills Energy will supply natural gas. Falcon Fire Protection Department will provide fire protection services to the proposed development

- **The subdivision provides evidence to show that the proposed methods for fire protection comply with Chapter 6 of this Code; and**

A Fire Protection Report is included with this submittal identifying compliance with the International Fire Code and Chapter 6.3.3 of the LDC.

- **The proposed subdivision meets other applicable sections of Chapter 6 and 8 of this Code.**

The proposed subdivision meets the applicable sections of these parts of the Code, subject to the PUD modification and deviation request referenced below.

PUD Modification:

Chapter 4.2.6.F.2.h of the Land Development Code (LDC) allows for a PUD modification of a general development standard in the LDC or criteria of the Engineering Criteria Manual (ECM). The proposed modification should provide for the general health, safety, and welfare of the citizens and at least 1 of the following benefits:

- Preservation of natural features;
- Provision of a more livable environment, such as the installment of street furniture, decorative street lighting or decorative paving materials;
- Provision of a more efficient pedestrian system;
- Provision of additional open space;
- Provision of other public amenities not otherwise required by the Code; or
- The proposed modification is granted in exchange for the open space and/or amenity designs provided in the PUD development plan and/or development guide.

A PUD Modification and associated deviation is requested to ECM Section 2.5.2.C.4 relating to mid-block crossings and the requirement for access ramps on local roadways to be spaced no greater than 600 feet apart. The deviation request is to waive the need for mid-block pedestrian crossings on the following streets: Chalk Cliffs Dr, Lava Falls Dr, Crystal Falls Dr, and House Rock Dr.

The proposed PUD modification addresses the general health, safety, and welfare of the citizens, provides a more livable environment and provides a more efficient pedestrian system as follows:

General health, safety, and welfare of the citizens:

- The subdivision design intentionally limits the use of mid-block pedestrian crossings as they can create a safety hazard. Parked on-street cars can hinder sight lines for both pedestrians and drivers. Pedestrians will typically cross the street in any location on a local residential street due

to the low traffic volumes. Formalizing this crossing point with a mid-block crossing can create an assumption that traffic will stop for the pedestrian which, together with blocked visibility, can potentially place pedestrians in danger.

- There are no Federal ADA maximum distances allowed between accessible pedestrian crossings that would necessitate midblock pedestrian ramps, and accessible ramps are provided at nearby intersections.

A more livable environment:

- The omission of mid-block crossings creates a more pleasing design aesthetic as it provides a continuous and uninterrupted attached sidewalk through the neighborhood, creating a more walkable and livable residential environment.
- The proposed subdivision, and Meridian Ranch generally, relies heavily upon trails through and between neighborhoods to provide an interconnected community. These trails are segregated from traffic and provide a safer and more enjoyable pedestrian experience than the use of mid-block crossings.

A more efficient pedestrian system as follows:

- There are no destinations or trails that would necessitate a mid-block crossing on these streets.
- Sidewalks on both sides of these streets provide efficient pedestrian access to crossing ramps at the nearest street intersection, and mid-block crossings do not make it more efficient and can create safety issues, as referenced above.

Request for Alternative Landscape Design:

The Applicant requests approval of an Alternative Landscape Plan for the required landscaping along Rex Road. As noted above, the construction of Rex Road as a half-section of the Urban Minor Arterial street-section will be constructed within an 80-foot right of way with right-of-way reservation to accommodate the future full width section when the County determines it is necessary. The request for an Alternative Landscape Plan is to allow a reduction in the number of the required trees along Rex Road, so that trees are planted only outside the future widened right-of-way and do not have to be removed if the road is widened. The request is to reduce tree planting along Rex Road from the required 121 trees to 80 trees. The residual 41 trees will be located interior to the site so they are not disturbed by the future road widening.

LDC Chapter 6.2.2(A)(4) indicates that the PCD Director may approve landscaping that does not meet the specific requirements of the Section, provided the purpose of the landscape requirements is met. The purposes of the landscape requirements relevant to this request are to create a positive image and visual appeal along highly visible roads; to separate circulation systems; and to create an overall pleasant and attractive surrounding. The provided landscaping along Rex Road includes 80 trees, shrubs and other landscape features that will provide an attractive and positive image through

Meridian Ranch, consistent with the overall high quality of landscape design demonstrated throughout this master planned community. The relocation of 41 of the required trees to the interior of the site will create a more attractive residential environment and will enhance the regional trail corridor.

P:\GTL\Meridian Ranch\Admin\Rolling Hills Ranch North\Admin\Submittals\PUD\2nd Submittal\Rolling Hills Ranch North PUD_Letter of Intent_2nd Submittal.docx

PC Report Packet
Page 35 of 56PC Report Packet
Page 35 of 56

ROLLING HILLS RANCH NORTH FILINGS 1&2 PUD DEVELOPMENT PLAN DEVELOPMENT GUIDELINES

1995

SECTION 20, IN TOWNSHIP 12 SOUTH, RANGE 64 WEST OF
THE 6TH PRINCIPAL MERIDIAN, EL PASO COUNTY, COLORADO.

[illegible]

<p>County Certification</p> <p>This PUD Development Plan and Preliminary Plan for Rolling Hills Ranch North Fillings 1 & 2 at Meridian Ranch was approved for filing by the El Paso County, Colorado Board of County Commissioners on the _____ day of _____, 20____, and any conditions included in the resolution of approval. The dedications of land to the public (streets, tracts, easements: list those applicable) will be accepted upon recordation of the final plat(s), but public improvements thereon will not become the maintenance responsibility of El Paso County until the same are approved by the Board of County Commissioners in accordance with the requirements of the Land Development Code and Engineering Criteria Manual, and the Subdivision Improvements Agreement.</p>	<p>_____ date</p>
<p>Chair, Board of County Commissioners</p>	<p>_____ date</p>

<p>Clerk and Recorder Certification</p> <p>STATE OF COLORADO COUNTY OF EL PASO</p> <p>I hereby certify that this instrument was filed in my office on this _____ day of _____, 20____, and was recorded at Reception Number _____ of the records of El Paso County.</p>	<p>_____ date</p>
<p>El Paso County Clerk and Recorder</p>	<p>_____ date</p>

HAS EXECUTED THESE PRESENTS THIS _____ DAY OF _____ 20____ A.D., A CALIFORNIA CORPORATION

PAUL GUZMAN, VICE PRESIDENT
MERIDIAN RANCH INVESTMENTS, INC

State of California
County of _____
Signed before me on _____ 20____
by _____
(name(s) of individual(s) making statement)

(Notary's official signature)

(Title of office)

(Commission Expiration)

SECTION 20, IN TOWNSHIP 12 SOUTH, RANGE 64 WEST OF
THE 6TH PRINCIPAL MERIDIAN, EL PASO COUNTY, COLORADO.

FALCON REGIONAL PARK

THE ESTATES AT ROLLING HILLS RANCH FILINGS 1&2

SHEET 3, 7, 13

SHEET 4, 8, 14

FLING 2

FLING 1

SHEET 5, 9, 15

SHEET 6, 10, 16

THE SANCTUARY

MERIDIAN RANCH SANCTUARY COMMUNITY PARK

ROLLING HILLS RANCH FILINGS 1-3

0 150 300 600
SCALE: 1" = 300'
NORTH

60' R.O.W. URBAN LOCAL ROAD (TYPICAL)

County Certification

This PUDs Development Plan and Preliminary Plan for Rolling Hills Ranch No. 18, 8.2 ac Meridian Ranch was approved for filing by the El Paso County Board of Commissioners on _____ day of _____, 20____, subject to any notes specified hereon and any conditions included in the resolution of approval. The dedications of and to the public (streets, tracts, easements: list those applicable) will be accepted upon recordation of the final plat(s), but public improvements until preliminary acceptance of the public improvements in accordance with the requirements of the Land Development Code and Engineering Criteria Manual, and the Subdivision Improvements Agreement.

Chair, Board of County Commissioners	date
Director, Planning & Community Development	date

Clerk and Recorder Certification

STATE OF COLORADO
COUNTY OF EL PASO

I hereby certify that this instrument was filed in my office on this _____ day of _____, 20____, and was a true and correct copy of the records of El Paso County.

Clerk and Recorder Certification

STATE OF COLORADO
COUNTY OF EL PASO

I hereby certify that this instrument was filed in my office on this _____ day of _____, 20____, and was recorded at Reception Number _____ of the records of El Paso County.

El Paso County Clerk and Recorder

Land Owner Certification

In Witness Whereof: HAS EXECUTED THESE PRESENTS THIS _____ DAY OF _____ 20__ A.D., A CALIFORNIA CORPORATION _____

RAUL GUZMAN, VICE PRESIDENT
MERIDIAN RANCH INVESTMENTS, INC

State of California
County of San Diego
Signed before me on _____ 20__ (name(s) of individual(s) making statement).

(Notary's official signature)

(Title of official)

(Commissioner)

	PUD
• Existing Zoning:	4200000477
• Tax ID Number:	148.873 AC
• Total Area:	441
• Number of Lots:	78,160 AC (52.5%)
• Total Lot Area:	7,720 SF
• Average Lot Size:	2.96 DU/AC
• Gross Density:	5.64 DU/AC
• Net Density:	24,252 AC (16.3%)
• R.O.W.:	46,461 AC (31.2%)
• Total Tract Area:	

FLING 1	FLING 2	TRACT	SIZE (AC)	USE	OWNERSHIP/MAINTENANCE	
					MERIDIAN RANCH SERVICE METRO DISTRICT/PUBLIC	MERIDIAN RANCH SERVICE METRO DISTRICT/PRIVATE
		Tract A	5.632 AC	LANDSCAPE BUFFER/OPEN SPACE/DRAINAGE/UTILITIES		
		Tract B	0.988 AC	LANDSCAPE BUFFER/OPEN SPACE/DRAINAGE/UTILITIES		
		Tract A	39.841 AC	LANDSCAPE BUFFER/OPEN SPACE/DRAINAGE/UTILITIES		

ISSUE	PROVIDER / MAINTENANCE	AVAILABILITY / AMOUNT
STUDENT GENERATION		
Elementary School / (4,600/1150)	School District 49	441 Single Family Dwelling Units
Middle School / (1,400/71)	School District 49	
High School / (2,000/91)	School District 49	
TOTAL: 310		
WATER PROVIDER	Meridian Ranch Metropolitan District	
SEWER / WASTE WATER PROVIDER	Meridian Ranch Metropolitan District	(See LOI & Water Resources Report)
FIRE PROTECTION PROVIDER	Meridian Ranch Metropolitan District	(See LOI & Wastewater Report)
EMERGENCY SERVICES	Falcon Fire Protection District	
AMBULANCE	Falcon Fire Protection District	
POLICE	El Paso County Sheriff	
RECREATION ACREAGE		
Open Space	Meridian Ranch Metropolitan District	46.461 acres
Park	Meridian Ranch Metropolitan District	N/A
Trails	Meridian Ranch Metropolitan District	3,840 Linear Feet
Private Open Areas:	Meridian Ranch Metropolitan District	N/A

ESTATES FILING 2 AND 3	FILING 7	FILING 6	FILING 4	FILING 3	FILING 2	FILING 1	DWELLING UNITS
62	131	54	96	122	350	800	
STONEBRIDGE FILING 3	FILING 4B	THE VISTAS FILING 1	FILING 8	STONEBRIDGE FILING 2	FILING 11	FILING 10	DWELLING UNITS
164	62	221	145	175	200	200	
ROLLING HILLS RANCH FILING 1-3	FILING 2	ESTATES AT ROLLING HILLS RANCH FILING 1	STONEBRIDGE FILING 4	STONEBRIDGE FILING 5	WINDINGWALK FILING 1	WINDINGWALK FILING 2	DWELLING UNITS
725	98	16	209	182	405	182	

DATE:	BY:	DESCRIPTION:
-------	-----	--------------

Cover Sheet

PUDSP235



N.E.S. Inc.
619 N. Cascade Avenue, Suite 200
Colorado Springs, CO 80903
Tel. 719.471.0073
Fax 719.471.0267
www.nescolorado.com

© 2012. All Rights Reserved.

PLANNING / LANDSCAPE ARCHITECT

IN ASSOCIATION WITH

DATE: 12/07/2023
PROJECT NO: 2301000000
PREPARED BY: A. ROMAN

SEA

ISSUE NO

ISSUE / REVISION

SHEET TITLE

SHEET NUMBER

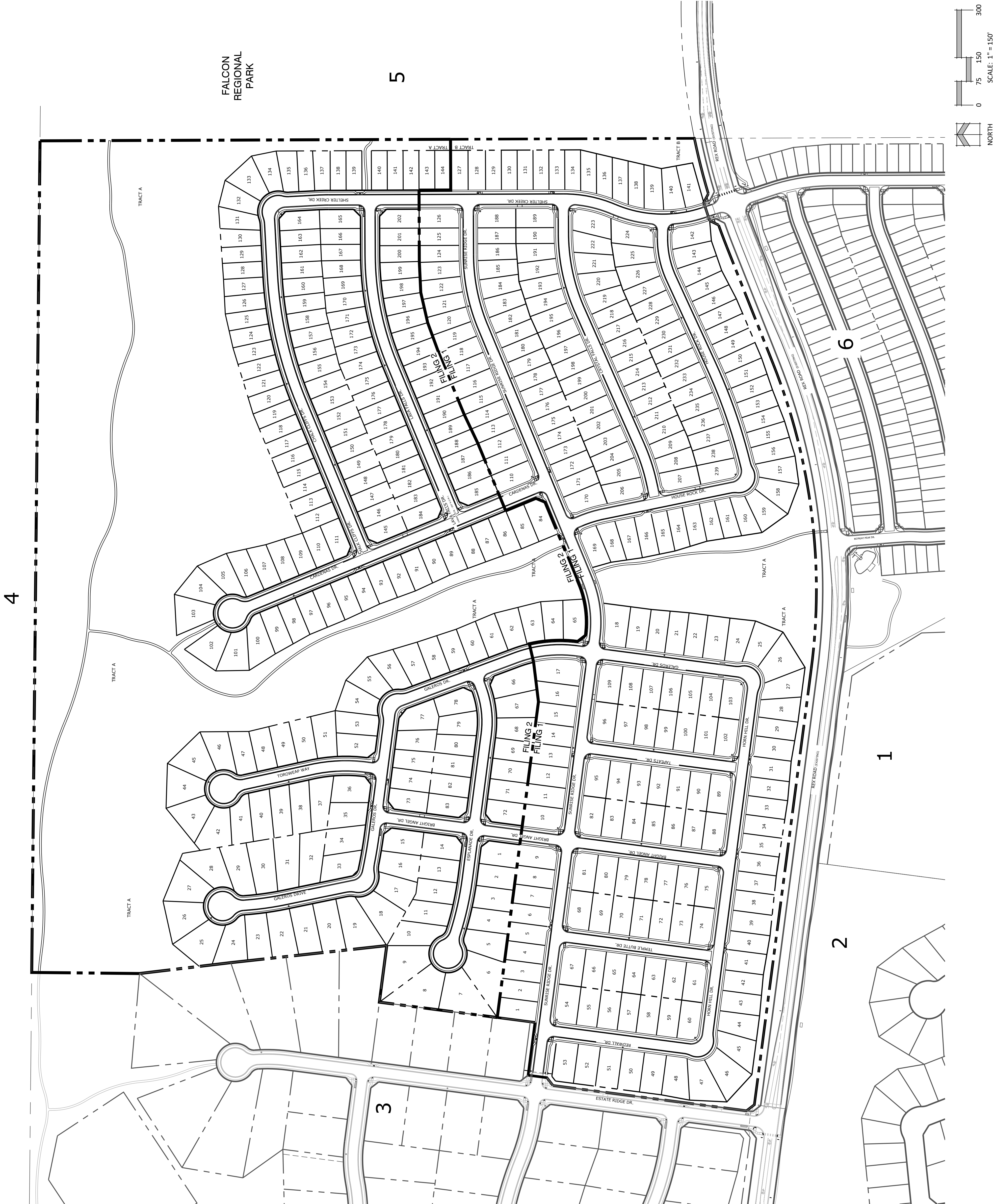
PLAN FILE #

LEGAL DESCRIPTION - ROLLING HILLS RANCH NORTH FILINGS 1 & 2

KNOW ALL MEN BY THESE PRESENTS,
THAT GTL, INC. DBA GTL DEVELOPMENT, INC., THEODORE TCHANG, PRESIDENT BEING THE OWNER OF THE FOLLOWING DESCRIBED TRACT OF LAND:
THE FOLLOWING DESCRIBED TRACT OF LAND:
THAT GTL, INC. DBA GTL DEVELOPMENT, INC., THEODORE TCHANG, PRESIDENT BEING THE OWNER OF THE FOLLOWING DESCRIBED TRACT OF LAND:
A PARCEL OF LAND LOCATED IN A PORTION OF SECTION 30, IN TOWNSHIP 12 SOUTH, RANGE 64 WEST OF THE 6TH PRINCIPAL MERIDIAN, MORE PARTICULARLY DESCRIBED AS FOLLOWS:
BEGINNING AT A POINT ON THE EASTERLY RIGHT-OF-WAY OF ESTATE RIDGE DRIVE AS INDICATED IN THE ESTATES AT ROLLING HILLS RANCH FILINGS NO. 2, RECORDED WITH RECEPTION NO. 222716944 IN THE RECORDS OF EL PASO COUNTY, POINT BEING ON THE EASTERN BOUNDARY LINE OF SAID FILINGS;
THE FOLLOWING WINE (S) COURSES ARE ON SAID BOUNDARY LINE:
1. THENCE N60°50'00"E A DISTANCE OF 50.00 FEET;
2. THENCE N67°20'00"E A DISTANCE OF 60.00 FEET;
3. THENCE N67°20'00"E A DISTANCE OF 60.00 FEET;
4. THENCE N67°20'00"E A DISTANCE OF 60.00 FEET;
5. THENCE N67°20'00"E A DISTANCE OF 465.00 FEET;
6. THENCE S87°33'58"E A DISTANCE OF 180.00 FEET;
7. THENCE S87°33'58"E A DISTANCE OF 180.00 FEET;
8. THENCE N60°47'53"W A DISTANCE OF 290.00 FEET;
9. THENCE N60°47'53"W A DISTANCE OF 340.00 FEET TO A POINT ON THE NORTH LINE OF THE NORTHWEST 1/4 OF SAID SECTION 20;
THE FOLLOWING COURSE IS ON SAID SECTION LINE:
10. THENCE S89°72'49"E A DISTANCE OF 2624.85 FEET TO A POINT ON THE WESTERN BOUNDARY OF FALCON REGIONAL PARK RECORDED WITH RECEPTION NO. 214093227;
THE FOLLOWING COURSE IS ON SAID BOUNDARY LINE:
11. THENCE S09°13'00"E A DISTANCE OF 2664.90 FEET TO A NON-TANGENT CURVE TO THE LEFT, POINT BEING ON THE NORTHERN BOUNDARY OF THE SANCTUARY FILING NO. 1 AT MERIDIAN RANCH RECORDED WITH RECEPTION NO. 223715140 IN THE RECORDS OF EL PASO COUNTY;
THE FOLLOWING WINE (S) COURSES ARE ON THE BOUNDARY LINE OF SAID THE SANCTUARY FILING NO. 1 AT MERIDIAN RANCH:
25. THENCE ON THE ARC OF SAID CURVE HAVING A RADIUS OF 2050.00 FEET, A DELTA ANGLE OF 05°02'20", AN ARC LENGTH OF 180.29 FEET, WHOSE LONG CHORD BEARS S89°13'00"E A DISTANCE OF 31.31 FEET;
26. THENCE N62°31'53"W A DISTANCE OF 31.42 FEET;
27. THENCE S09°13'00"E A DISTANCE OF 31.42 FEET;
28. THENCE S09°13'00"E A DISTANCE OF 31.42 FEET TO A NON-TANGENT CURVE TO THE LEFT;
29. THENCE ON THE ARC OF SAID CURVE, HAVING A RADIUS OF 2050.00 FEET, A DELTA ANGLE OF 02°03'13", AN ARC LENGTH OF 73.48 FEET, WHOSE LONG CHORD BEARS S89°13'00"E A DISTANCE OF 12.87 FEET;
30. THENCE ON THE ARC OF SAID CURVE, HAVING A RADIUS OF 2050.00 FEET, A DELTA ANGLE OF 02°03'13", AN ARC LENGTH OF 73.48 FEET, WHOSE LONG CHORD BEARS S89°13'00"E A DISTANCE OF 12.87 FEET TO A POINT OF CURVE TO THE RIGHT;
31. THENCE ON THE ARC OF SAID CURVE, HAVING A RADIUS OF 1930.00 FEET, A DELTA ANGLE OF 29°02'45", AN ARC LENGTH OF 978.39 FEET, WHOSE LONG CHORD BEARS S89°13'00"E A DISTANCE OF 31.11 FEET TO THE POINT OF BEGINNING;
32. THENCE N62°33'58"W A DISTANCE OF 180.00 FEET;
33. THENCE N62°33'58"W A DISTANCE OF 180.00 FEET;
THE ABOVE PARCEL OF LAND CONTAINS 148.877 ACRES, MORE OR LESS.
BEARINGS ARE BASED ON THE SOUTH LINE OF THE SW 1/4 OF SECTION 28, TOWNSHIP 12 SOUTH, RANGE 64 WEST OF THE 6TH P.M., ASSUMED TO BEAR S89°23'42"E FROM THE SOUTHWEST CORNER OF SAID SECTION 28 (A STONE MARKED "X") TO THE SOUTH QUARTER CORNER OF SAID SECTION 29 (A 25" ALUM. CAP IS #30897).

ADJACENT OWNERS

ADJACENT OWNERS	NAME	MAILING ADDRESS	CITY / STATE / ZIP
1	Meridian Service Metro District	118865 Stapleton Dr.	Peyton, CO 80831
2	GTL INC. - Rolling Hills Filing 3	3575 Kenyon Street, Suite 200	San Diego, CA 92110
3	GTL INC. - The Estates at Rollings Hills Ranch	3575 Kenyon Street, Suite 200	San Diego, CA 92110
4	Falcon Latigo LLC	5590 S Roslyn Street, Suite 400	Englewood, CO 80111
5	Board of County Commissioners of El Paso County	200 S Cascade Ave., Suite 150	Colorado Springs, CO
6	GTL INC. - The Sanctuary	3575 Kenyon Street, Suite 200	San Diego, CA 92110



ROLLING HILLS RANCH NORTH FILINGS 1 & 2 AT MERIDIAN RANCH

PUD DEVELOPMENT / PRELIMINARY PLAN

ENTITLEMENT

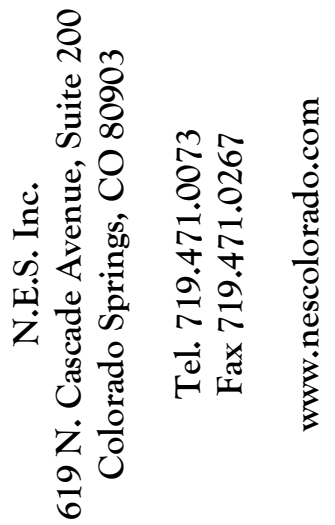
DATE: 2/20/2024
BY: PER COUNTY REVIEW
COMMENTS:

Legal Plan

2

2 OF 16

PUDSP235



N.E.S. Inc.
619 N. Cascade Avenue, Suite 200
Colorado Springs, CO 80903
Tel. 719.471.0073
Fax 719.471.0267
www.nescolorado.com

© 2012. All Rights Reserved.

PUD DEVELOPMENT /
PRELIMINARY PLAN

PROJECT INFO
DATE: 12/07/2023
PROJECT MGR: B. PERKINS
PREPARED BY: A. ROMAN

ENTITLEMENT

PUD Site Plan

၈

3 OF 16
PUDSP235





N.E.S. Inc.
619 N. Cascade Avenue, Suite 200
Colorado Springs, CO 80903

Tel. 719.471.0073
Fax 719.471.0267

www.nescolorado.com

© 2012. All Rights Reserved.

ROLLING HILLS
RANCH NORTH
FILINGS 1 & 2
AT MERIDIAN
RANCH

ROAD DEVELOPMENT /
PRELIMINARY PLAN

DATE: 12/07/2023
PROJECT MGR: B. PERKINS
PREPARED BY: A. ROMAN

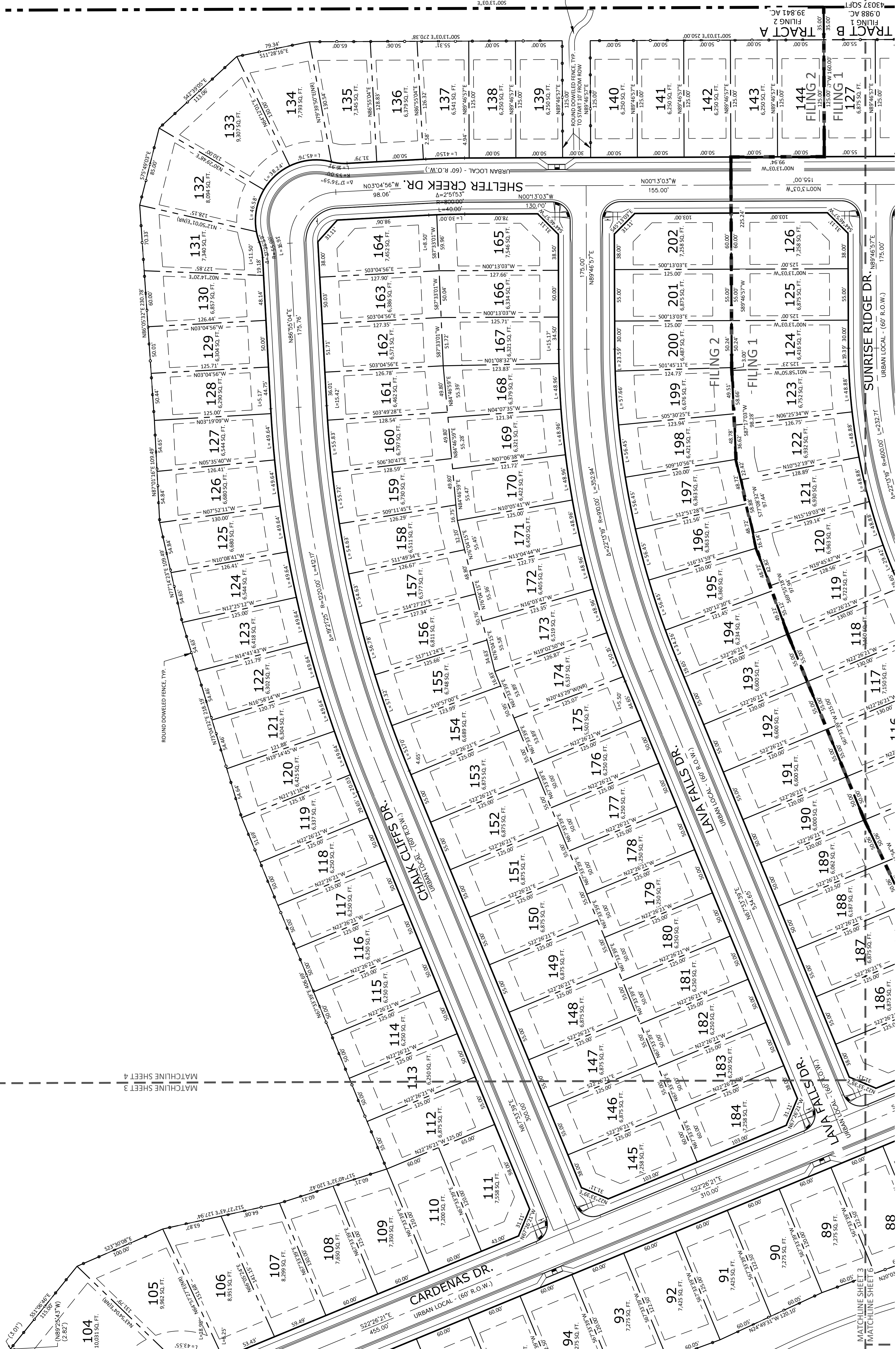
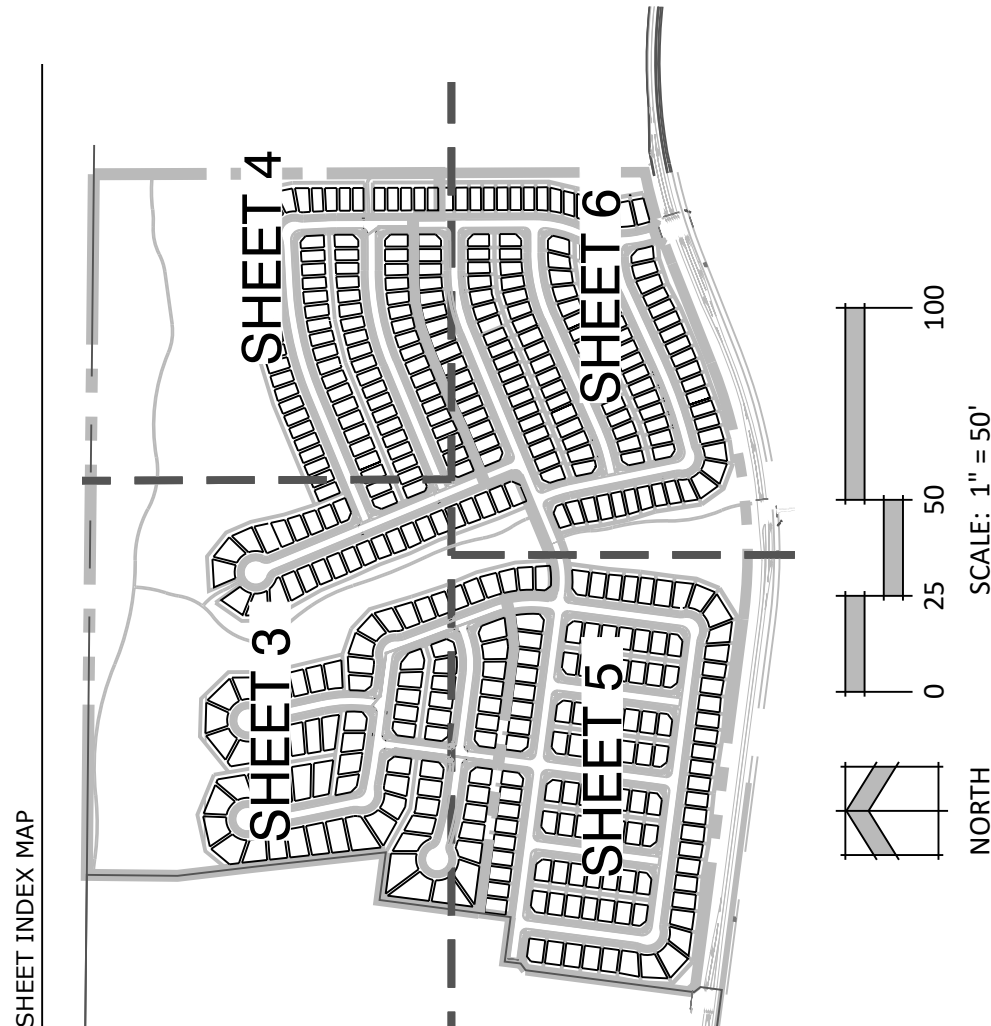
ENTITLEMENT

BY:	DESCRIPTION:
24 BP	PER COUNTY R COMMENTS

PUD Site Plan

4 OF 16

PUDSP235

PC Report Packet
Page 38 of 56



N.E.S. Inc.
1619 N. Cascade Avenue, Suite 200
Colorado Springs, CO 80905
Tel. 719.471.0733
Fax 719.471.0267
www.nescolorado.com

© 2012. All Rights Reserved.

PLANNERS / LANDSCAPE ARCHITECT

IN ASSOCIATION WITH

ROLLING HILLS
RANCH NORTH
FILINGS 1 & 2
AT MERIDIAN
RANCH

PUD DEVELOPMENT /
PRELIMINARY PLAN

DATE: 12/07/2023
DRAWN BY: JAMES
PREPARED BY: A. RONAN

ENTITLEMENT

DATE: 2/20/2024
BY: BP

DESCRIPTION:
PER COUNTY REVIEW
COMMENTS

ISSUE / REVISION

PUD Site Plan

5

5 OF 16

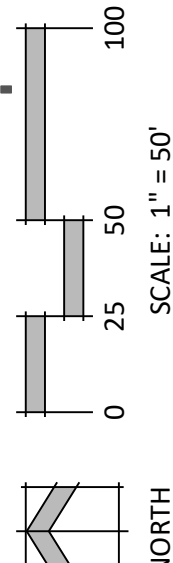
PUDSP235

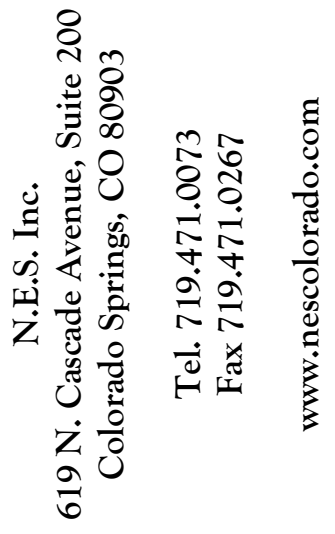


SHEET INDEX MAP

ZONE PUD
USE: RESIDENTIAL
SINGLE-FAMILY DWELLING
NO. 203 AT MERIDIAN RANCH

MERIDIAN RANCH
SANCTUARY
COMMUNITY PARK





N.E.S. Inc.
619 N. Cascade Avenue, Suite 200
Colorado Springs, CO 80903

Tel. 719.471.0073
Fax 719.471.0267

www.nescolorado.com

© 2012. All Rights Reserved.

BOARD OF COUNTY
COMMISSIONERS OF EL
PASO COUNTY
ZONE: PUD
USE: COUNTY
FALCON REGIONAL PARK

ROLLING HILLS
RANCH NORTH
FILINGS 1 & 2
AT MERIDIAN
RANCH

PUD DEVELOPMENT /
PRELIMINARY PLAN

DATE: 12/07/2023
PROJECT MGR: B. PERKINS
PREPARED BY: A. ROMAN

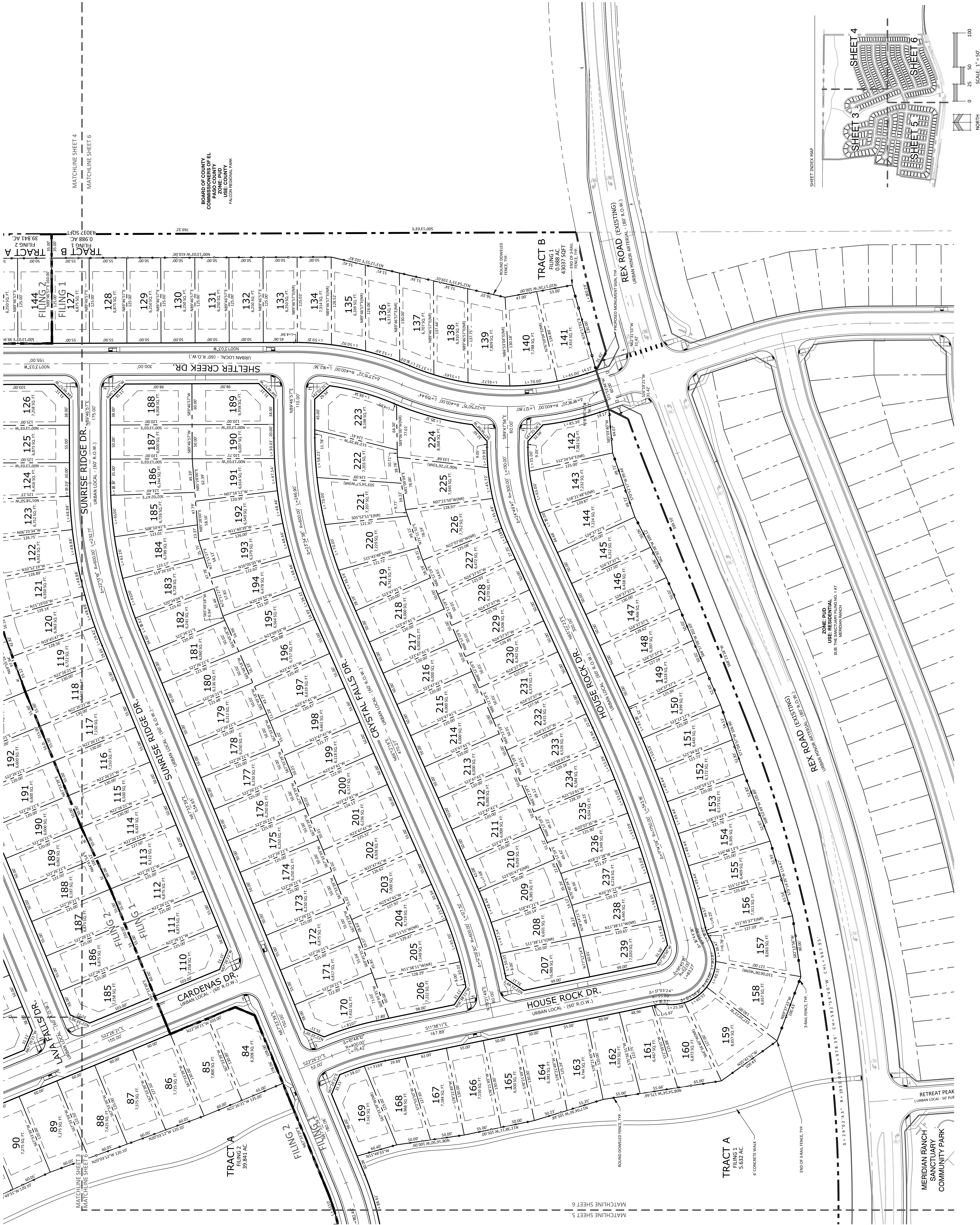
ENTITLEMENT

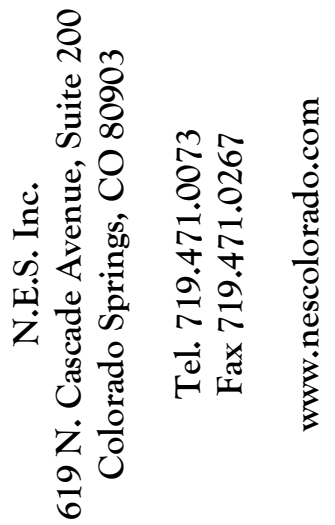
PUD Site Plan

9

6 of 16

PUDSP235





© 2012. All Rights Reserved.

ROLLING HILLS
RANCH NORTH
FILINGS 1 & 2
AT MERIDIAN
RANCH

UPD DEVELOPMENT /
PRELIMINARY PLAN

DATE: 12/07/2023
PROJECT MGR: B. PERKINS
PREPARED BY: A. ROMAN

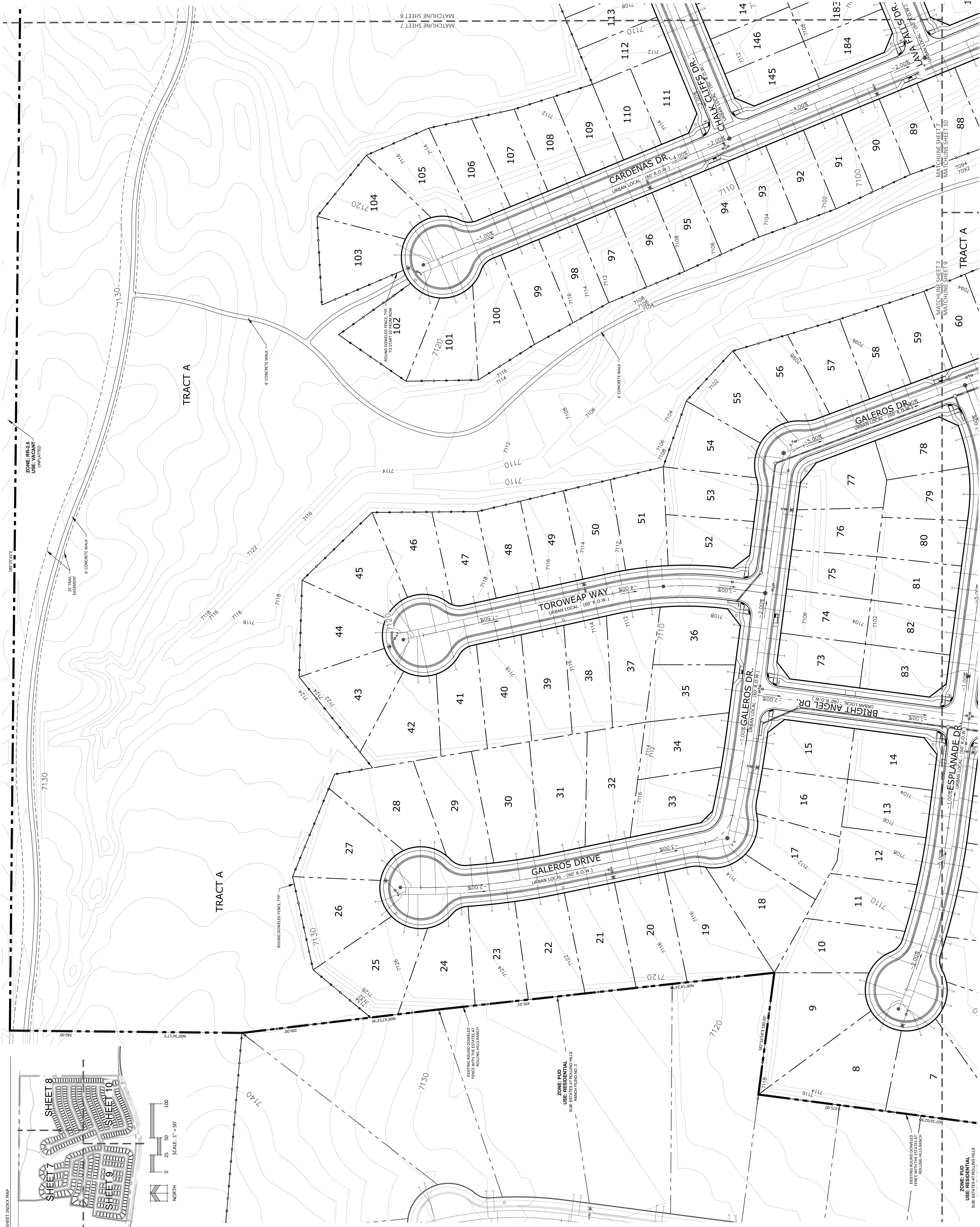
ENTITLEMENT

BY:	DESCRIPTION:	PER COUNTY R	COMMENTS
Bp			

Grading and Utility Plan

7

7 OF 16
PUDSP235





N.E.S. Inc.
619 N. Cascade Avenue, Suite 200
Colorado Springs, CO 80903
Tel. 719.471.0073
Fax 719.471.0267
www.nescolorado.com
© 2012. All Rights Reserved.

ROLLING HILLS
RANCH NORTH
FILINGS 1 & 2
AT MERIDIAN
RANCH

PUD DEVELOPMENT /
PRELIMINARY PLAN

DATE: 12/07/2023
PROJECT MGR: B. PERKINS
PREPARED BY: A. ROMAN

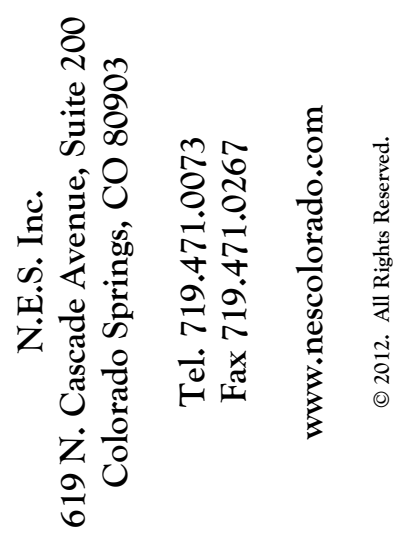
ENTITLEMENT

[illegible]

Grading and Utility Plan

8 OF 16

PUDSP235



619 N. Cascade Avenue, Suite 200
Colorado Springs, CO 80903

Tel. 719.471.0073

Fax 719.471.0267

www.nescolorado.com

© 2012. All Rights Reserved.

ROLLING HILLS
RANCH NORTH
FILINGS 1 & 2
AT MERIDIAN
RANCH

PUD DEVELOPMENT /
PRELIMINARY PLAN

DATE: 12/07/2023
PROJECT MGR: B. PERKINS
PREPARED BY: A. ROMAN

ENTITLEMENT

DATE:	BY:	DESCRIPTION:
2/20/2024	BP	PER COUNTY REVIEW COMMENTS

Grading and
Utility Plan

9

9 OF 16

PUDSP235





BOARD OF COUNTY COMMISSIONERS OF EL PASO COUNTY
ZONE PUD
USE: RESIDENTIAL
FALCON REGIONAL PARK

TRACT A
TRACT B

FILE 2
FILE 1

144
127

128
129
130
131
132
133
134
135
136
137
138
139
140
141

142
143
144
145
146
147
148
149
150
151
152
153
154
155
156
157
158
159

160
161
162
163
164
165
166
167
168
169

170
171
172
173
174
175
176
177
178
179
180
181
182
183
184
185
186
187
188
189

190
191
192
193
194
195
196
197
198
199
200
201
202
203
204
205
206
207
208
209
210
211
212
213
214
215
216
217
218
219
220
221
222
223

224
225
226
227
228
229
230
231
232
233
234
235
236
237
238
239

240
241
242
243
244
245
246
247
248
249
250
251
252
253
254
255
256
257
258
259

260
261
262
263
264
265
266
267
268
269
270
271
272
273
274
275
276
277
278
279
280

281
282
283
284
285
286
287
288
289
290
291
292
293
294
295
296
297
298
299
300

301
302
303
304
305
306
307
308
309
310
311
312
313
314
315
316
317
318
319
320

321
322
323
324
325
326
327
328
329
330
331
332
333
334
335
336
337
338
339
340

341
342
343
344
345
346
347
348
349
350
351
352
353
354
355
356
357
358
359
360

361
362
363
364
365
366
367
368
369
370
371
372
373
374
375
376
377
378
379
380

381
382
383
384
385
386
387
388
389
390
391
392
393
394
395
396
397
398
399
400

401
402
403
404
405
406
407
408
409
410
411
412
413
414
415
416
417
418
419
420

421
422
423
424
425
426
427
428
429
430
431
432
433
434
435
436
437
438
439
440

441
442
443
444
445
446
447
448
449
450
451
452
453
454
455
456
457
458
459
460

461
462
463
464
465
466
467
468
469
470
471
472
473
474
475
476
477
478
479
480

481
482
483
484
485
486
487
488
489
490
491
492
493
494
495
496
497
498
499
500

501
502
503
504
505
506
507
508
509
510
511
512
513
514
515
516
517
518
519
520

521
522
523
524
525
526
527
528
529
530
531
532
533
534
535
536
537
538
539
540

541
542
543
544
545
546
547
548
549
550
551
552
553
554
555
556
557
558
559
560

561
562
563
564
565
566
567
568
569
570
571
572
573
574
575
576
577
578
579
580

581
582
583
584
585
586
587
588
589
590
591
592
593
594
595
596
597
598
599
600

601
602
603
604
605
606
607
608
609
610
611
612
613
614
615
616
617
618
619
620

621
622
623
624
625
626
627
628
629
630
631
632
633
634
635
636
637
638
639
640

641
642
643
644
645
646
647
648
649
650
651
652
653
654
655
656
657
658
659
660

661
662
663
664
665
666
667
668
669
670
671
672
673
674
675
676
677
678
679
680

681
682
683
684
685
686
687
688
689
690
691
692
693
694
695
696
697
698
699
700

701
702
703
704
705
706
707
708
709
710
711
712
713
714
715
716
717
718
719
720

721
722
723
724
725
726
727
728
729
730
731
732
733
734
735
736
737
738
739
740

741
742
743
744
745
746
747
748
749
750
751
752
753
754
755
756
757
758
759
760

761
762
763
764
765
766
767
768
769
770
771
772
773
774
775
776
777
778
779
780

781
782
783
784
785
786
787
788
789
790
791
792
793
794
795
796
797
798
799
800

801
802
803
804
805
806
807
808
809
810
811
812
813
814
815
816
817
818
819
820

821
822
823
824
825
826
827
828
829
830
831
832
833
834
835
836
837
838
839
840

841
842
843
844
845
846
847
848
849
850
851
852
853
854
855
856
857
858
859
860

861
862
863
864
865
866
867
868
869
870
871
872
873
874
875
876
877
878
879
880

881
882
883
884
885
886
887
888
889
890
891
892
893
894
895
896
897
898
899
900

901
902
903
904
905
906
907
908
909
910
911
912
913
914
915
916
917
918
919
920

921
922
923
924
925
926
927
928
929
930
931
932
933
934
935
936
937
938
939
940

941
942
943
944
945
946
947
948
949
950
951
952
953
954
955
956
957
958
959
960

961
962
963
964
965
966
967
968
969
970
971
972
973
974
975
976
977
978
979
980

981
982
983
984
985
986
987
988
989
990
991
992
993
994
995
996
997
998
999
1000

1001
1002
1003
1004
1005
1006
1007
1008
1009
1010
1011
1012
1013
1014
1015
1016
1017
1018
1019
1020

1021
1022
1023
1024
1025
1026
1027
1028
1029
1030
1031
1032
1033
1034
1035
1036
1037
1038
1039
1040

1041
1042
1043
1044
1045
1046
1047
1048
1049
1050
1051
1052
1053
1054
1055
1056
1057
1058
1059
1060

1061
1062
1063
1064
1065
1066
1067
1068
1069
1070
1071
1072
1073
1074
1075
1076
1077
1078
1079
1080

1081
1082
1083
1084
1085
1086
1087
1088
1089
1090
1091
1092
1093
1094
1095
1096
1097
1098
1099
1100

1101
1102
1103
1104
1105
1106
1107
1108
1109
1110
1111
1112
1113
1114
1115
1116
1117
1118
1119
1120

1121
1122
1123
1124
1125
1126
1127
1128
1129
1130
1131
1132
1133
1134
1135
1136
1137
1138
1139
1140

1141
1142
1143
1144
1145
1146
1147
1148
1149
1150
1151
1152
1153
1154
1155
1156
1157
1158
1159
1160

1161
1162
1163
1164
1165
1166
1167
1168
1169
1170
1171
1172
1173
1174
1175
1176
1177
1178
1179
1180

1181
1182
1183
1184
1185
1186
1187
1188
1189
1190
1191
1192
1193
1194
1195
1196
1197
1198
1199
1200

1201
1202
1203
1204
1205
1206
1207
1208
1209
1210
1211
1212
1213
1214
1215
1216
1217
1218
1219
1220

1221
1222
1223
1224
1225
1226
1227
1228
1229
1230
1231
1232
1233
1234
1235
1236
1237
1238
1239
1240

1241
1242
1243
1244
1245
1246
1247
1248
1249
1250
1251
1252
1253
1254
1255
1256
1257
1258
1259
1260

1261
1262
1263
1264
1265
1266
1267
1268
1269
1270
1271
1272
1273
1274
1275
1276
1277
1278
1279
1280

1281
1282
1283
1284
1285
1286
1287
1288
1289
1290
1291
1292
1293
1294
1295
1296
1297
1298
1299
1300

1301
1302
1303
1304
1305
1306
1307
1308
1309
1310
1311
1312
1313
1314
1315
1316
1317
1318
1319
1320

1321
1322
1323
1324
1325
1326
1327
1328
1329
1330
1331
1332
1333
1334
1335
1336
1337
1338
1339
1340

1341
1342
1343
1344
1345
1346
1347
1348
1349
1350
1351
1352
1353
1354
1355
1356
1357
1358
1359
1360

1361
1362
1363
1364
1365
1366
1367
1368
1369
1370
1371
1372
1373
1374
1375
1376
1377
1378
1379
1380

1381
1382
1383
1384
1385
1386
1387
1388
1389
1390
1391
1392
1393
1394
1395
1396
1397
1398
1399
1400

1401
1402
1403
1404
1405
1406
1407
1408
1409
1410
1411
1412
1413
1414
1415
1416
1417
1418
1419
1420

1421
1422
1423
1424
1425
1426
1427
1428
1429
1430
1431
1432
1433
1434
1435
1436
1437
1438
1439
1440

1441
1442
1443
1444
1445
1446
1447
1448
1449
1450
1451
1452
1453
1454
1455
1456
1457
1458
1459
1460

1461
1462
1463
1464
1465
1466
1467
1468
1469
1470
1471
1472
1473
1474
1475
1476
1477
1478
1479
1480

1481
1482
1483
1484
1485
1486
1487
1488
1489
1490
1491
1492
1493
1494
1495
1496
1497
1498
1499
1500

1501
1502
1503
1504
1505
1506
1507
1508
1509
1510
1511
1512
1513
1514
1515
1516
1517
1518
1519
1520

1521
1522
1523
1524
1525
1526
1527
1528
1529
1530
1531
1532
1533
1534
1535
1536
1537
1538
1539
1540

1541
1542
1543
1544
1545
1546
1547
1548
1549
1550
1551
1552
1553
1554
1555
1556
1557
1558
1559
1560

1561
1562
1563
1564
1565
1566
1567
1568
1569
1570
1571
1572
1573
1574
1575
1576
1577
1578
1579
1580

1581
1582
1583
1584
1585
1586
1587
1588
1589
1590
1591
1592
1593
1594
1595
1596
1597
1598
1599
1600

1601
1602
1603
1604
1605
1606
1607
1608
1609
1610
1611
1612
1613
1614
1615
1616
1617
1618
1619
1620

1621
1622
1623
1624
1625
1626
1627
1628
1629
1630
1631
1632
1633
1634
1635
1636
1637
1638
1639
1640

1641
1642
1643
1644
1645
1646
1647
1648
1649
1650
1651
1652
1653
1654
1655
1656
1657
1658
1659
1660

1661
1662
1663
1664
1665
1666
1667
1668
1669
1670
1671
1672
1673
1674
1675
1676
1677
1678
1679
1680

1681
1682
1683
1684
1685
1686
1687
1688
1689
1690
1691
1692
1693
1694
1695
1696
1697
1698
1699
1700

1701
1702
1703
1704
1705
1706
1707
1708
1709
1710
1711
1712
1713
1714
1715
1716
1717
1718
1719
1720

1721
1722
1723
1724
1725
1726
1727
1728
1729
1730
1731
1732
1733
1734
1735
1736
1737
1738
1739
1740

1741
1742
1743
1744
1745
1746
1747
1748
1749
1750
1751
1752
1753
1754
1755
1756
1757
1758
1759
1760

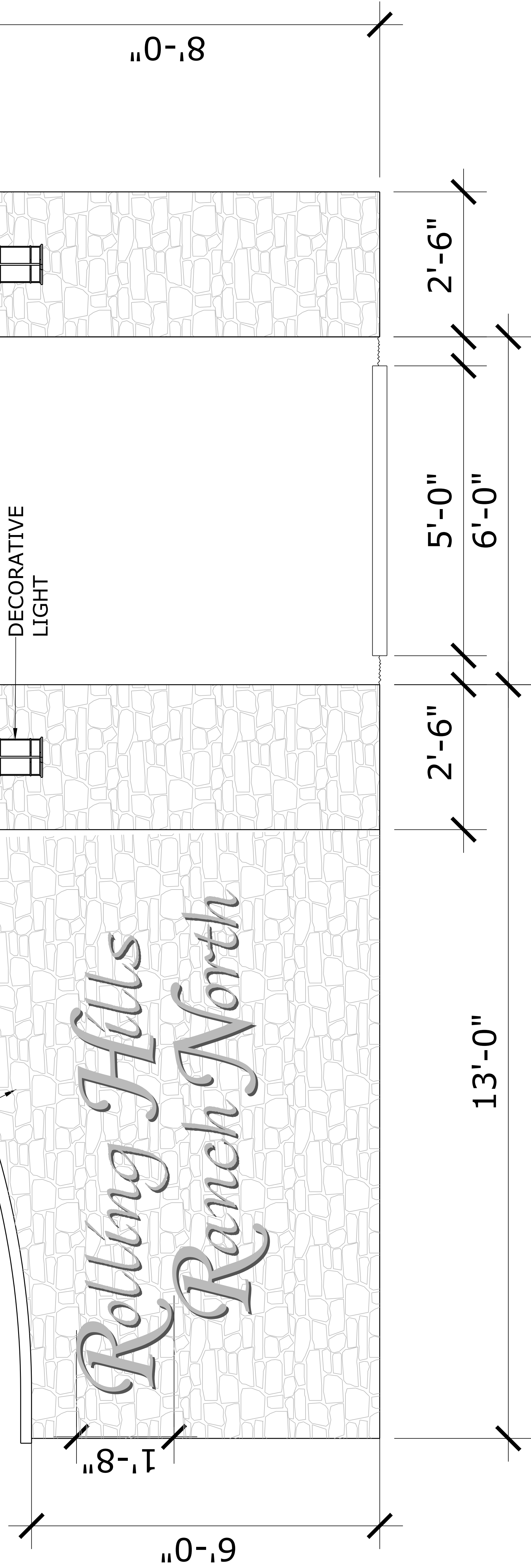
1761
1762
1763
1764
1765
1766
1767
1768
1769
1770
1771
1772
1773
1774
1775
1776
1777
1778
1779
1780

1781
1782
1783
1784
1785
1786
1787
1788
1789
1790
1791
1792
1793
1794
1795
1796
1797
1798
1799
1800

1801
1802
1803
1804
1805
1

2-1/4" THICK CHISELED EDGE EL DORADO BUCKSKIN COLUMN CAP AND TOP OF WALL. 1" OVERHANG. GROUT 1/8" TO FLUSH WITH STONE VENEER MORTAR JOINT. MEDIUM TONE MOCHA GROUT COLOR.

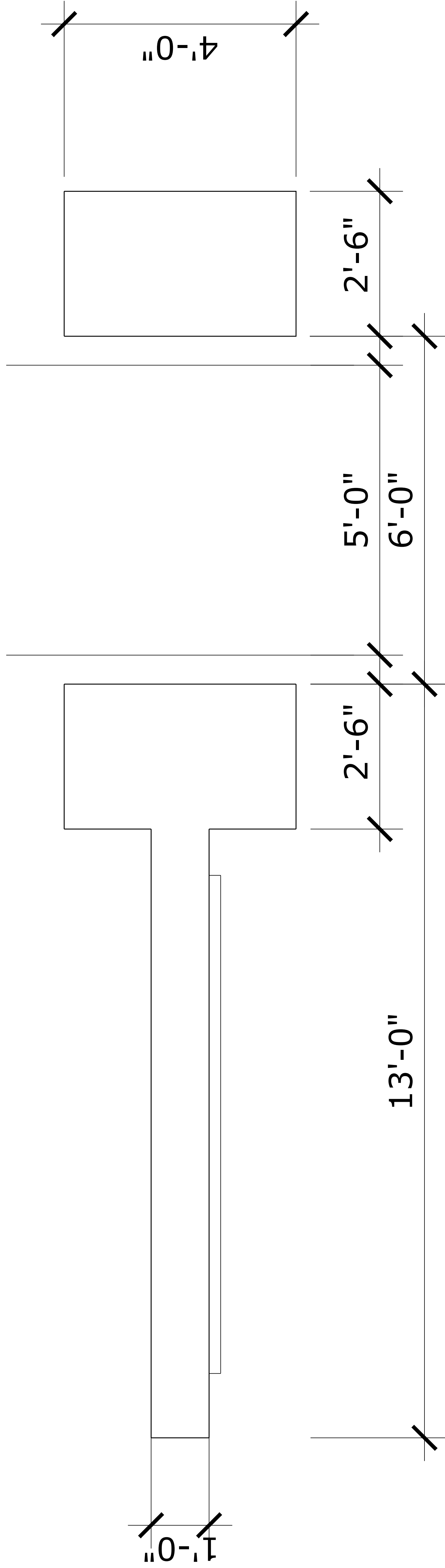
EL DORADO STONE VENEER FIELD LEDGE - VENETO



ENTRY SIGNAGE ELEVATION VIEW

16

SCALE: 1" = 1'



ENTRY SIGNAGE PLAN VIEW

16

SCALE: 1" = 1'



N.E.S. Inc.
619 N. Cascade Avenue, Suite 200
Colorado Springs, CO 80905
Tel. 719.471.0073
Fax 719.471.0267
www.nescolorado.com

© 2012. All Rights Reserved.

PLANNERS / LANDSCAPE ARCHITECT

IN ASSOCIATION WITH

ROLLING HILLS RANCH NORTH FILINGS 1 & 2 AT MERIDIAN RANCH

PUD DEVELOPMENT /
PRELIMINARY PLAN

PROJECT NO: 12/07/2023
DATE: 2/28/2024
DESIGNED BY: A. BONAN
CHECKED BY: A. BONAN

SEAL

ENTITLEMENT

ISSUE INFO

DATE	BY	DESCRIPTION
2/28/2024	BP	PER COUNTY REVIEW COMMENTS

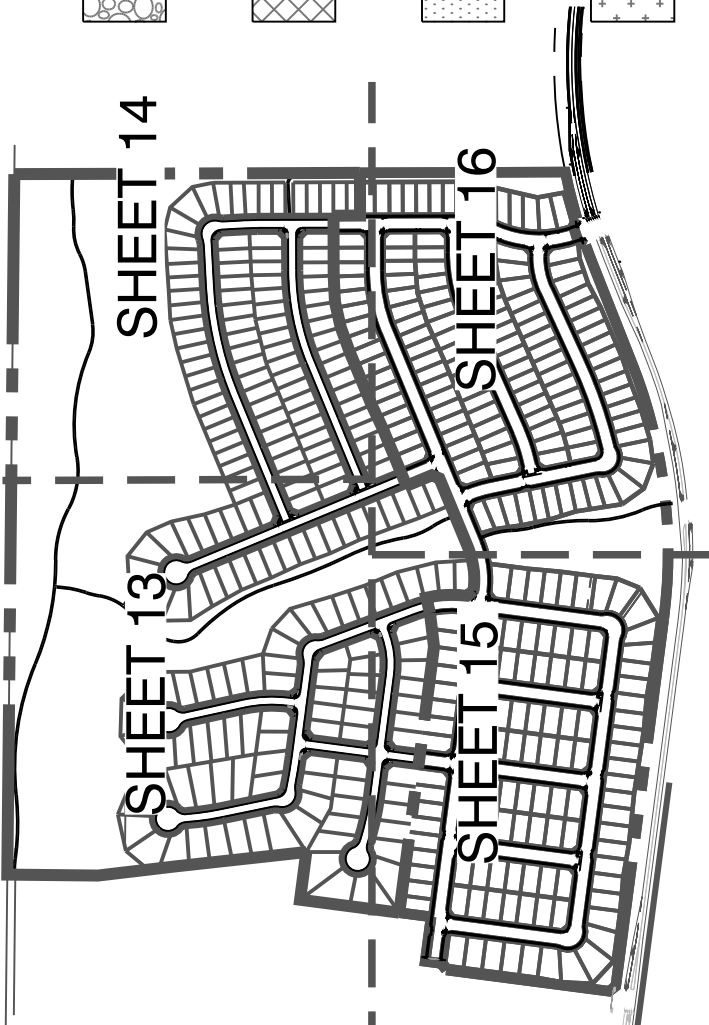
ISSUE / REVISION

Entry Signage/
Details

11

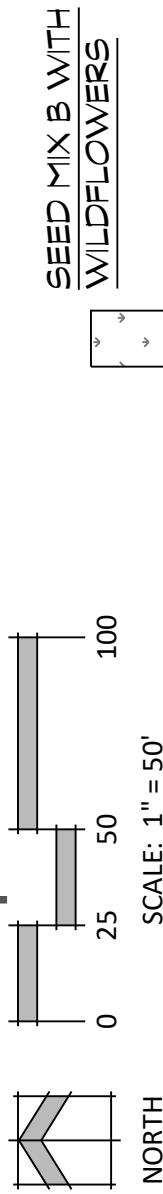
11 OF 16

PUDSP235



GROUND COVER LEGEND

- ROCK COBBLE
2" Grey Rose
- ROCK MULCH
1.5" Chiramon Granite
- SOIL
- SEED MIX A
To Extent of Disturbance
- SEED MIX B WITH
WILDFLOWERS



EXISTING EVERGREEN TREES WITH
ESTATES AT ROLLING HILLS TRING NO.2

EXISTING ROUND DOWNEED
FENCE WITH THE ESTATES AT
ROLLING HILLS RANCH

EXISTING ROUND DOWNEED
FENCE WITH THE ESTATES AT
ROLLING HILLS RANCH

EXISTING ROUND DOWNEED
FENCE WITH THE ESTATES AT
ROLLING HILLS RANCH

EXISTING ROUND DOWNEED
FENCE WITH THE ESTATES AT
ROLLING HILLS RANCH

EXISTING ROUND DOWNEED
FENCE WITH THE ESTATES AT
ROLLING HILLS RANCH

EXISTING ROUND DOWNEED
FENCE WITH THE ESTATES AT
ROLLING HILLS RANCH

EXISTING ROUND DOWNEED
FENCE WITH THE ESTATES AT
ROLLING HILLS RANCH

EXISTING ROUND DOWNEED
FENCE WITH THE ESTATES AT
ROLLING HILLS RANCH

EXISTING ROUND DOWNEED
FENCE WITH THE ESTATES AT
ROLLING HILLS RANCH

EXISTING ROUND DOWNEED
FENCE WITH THE ESTATES AT
ROLLING HILLS RANCH

EXISTING ROUND DOWNEED
FENCE WITH THE ESTATES AT
ROLLING HILLS RANCH

EXISTING ROUND DOWNEED
FENCE WITH THE ESTATES AT
ROLLING HILLS RANCH

EXISTING ROUND DOWNEED
FENCE WITH THE ESTATES AT
ROLLING HILLS RANCH

EXISTING ROUND DOWNEED
FENCE WITH THE ESTATES AT
ROLLING HILLS RANCH

EXISTING ROUND DOWNEED
FENCE WITH THE ESTATES AT
ROLLING HILLS RANCH

EXISTING ROUND DOWNEED
FENCE WITH THE ESTATES AT
ROLLING HILLS RANCH

EXISTING ROUND DOWNEED
FENCE WITH THE ESTATES AT
ROLLING HILLS RANCH

EXISTING ROUND DOWNEED
FENCE WITH THE ESTATES AT
ROLLING HILLS RANCH

EXISTING ROUND DOWNEED
FENCE WITH THE ESTATES AT
ROLLING HILLS RANCH

EXISTING ROUND DOWNEED
FENCE WITH THE ESTATES AT
ROLLING HILLS RANCH

EXISTING ROUND DOWNEED
FENCE WITH THE ESTATES AT
ROLLING HILLS RANCH

EXISTING ROUND DOWNEED
FENCE WITH THE ESTATES AT
ROLLING HILLS RANCH

EXISTING ROUND DOWNEED
FENCE WITH THE ESTATES AT
ROLLING HILLS RANCH

EXISTING ROUND DOWNEED
FENCE WITH THE ESTATES AT
ROLLING HILLS RANCH

EXISTING ROUND DOWNEED
FENCE WITH THE ESTATES AT
ROLLING HILLS RANCH

EXISTING ROUND DOWNEED
FENCE WITH THE ESTATES AT
ROLLING HILLS RANCH

EXISTING ROUND DOWNEED
FENCE WITH THE ESTATES AT
ROLLING HILLS RANCH

EXISTING ROUND DOWNEED
FENCE WITH THE ESTATES AT
ROLLING HILLS RANCH

EXISTING ROUND DOWNEED
FENCE WITH THE ESTATES AT
ROLLING HILLS RANCH

EXISTING ROUND DOWNEED
FENCE WITH THE ESTATES AT
ROLLING HILLS RANCH

EXISTING ROUND DOWNEED
FENCE WITH THE ESTATES AT
ROLLING HILLS RANCH

EXISTING ROUND DOWNEED
FENCE WITH THE ESTATES AT
ROLLING HILLS RANCH

EXISTING ROUND DOWNEED
FENCE WITH THE ESTATES AT
ROLLING HILLS RANCH

EXISTING ROUND DOWNEED
FENCE WITH THE ESTATES AT
ROLLING HILLS RANCH

EXISTING ROUND DOWNEED
FENCE WITH THE ESTATES AT
ROLLING HILLS RANCH

EXISTING ROUND DOWNEED
FENCE WITH THE ESTATES AT
ROLLING HILLS RANCH

EXISTING ROUND DOWNEED
FENCE WITH THE ESTATES AT
ROLLING HILLS RANCH

EXISTING ROUND DOWNEED
FENCE WITH THE ESTATES AT
ROLLING HILLS RANCH

EXISTING ROUND DOWNEED
FENCE WITH THE ESTATES AT
ROLLING HILLS RANCH

EXISTING ROUND DOWNEED
FENCE WITH THE ESTATES AT
ROLLING HILLS RANCH

EXISTING ROUND DOWNEED
FENCE WITH THE ESTATES AT
ROLLING HILLS RANCH

EXISTING ROUND DOWNEED
FENCE WITH THE ESTATES AT
ROLLING HILLS RANCH

EXISTING ROUND DOWNEED
FENCE WITH THE ESTATES AT
ROLLING HILLS RANCH

EXISTING ROUND DOWNEED
FENCE WITH THE ESTATES AT
ROLLING HILLS RANCH

EXISTING ROUND DOWNEED
FENCE WITH THE ESTATES AT
ROLLING HILLS RANCH

EXISTING ROUND DOWNEED
FENCE WITH THE ESTATES AT
ROLLING HILLS RANCH

EXISTING ROUND DOWNEED
FENCE WITH THE ESTATES AT
ROLLING HILLS RANCH

EXISTING ROUND DOWNEED
FENCE WITH THE ESTATES AT
ROLLING HILLS RANCH

EXISTING ROUND DOWNEED
FENCE WITH THE ESTATES AT
ROLLING HILLS RANCH

EXISTING ROUND DOWNEED
FENCE WITH THE ESTATES AT
ROLLING HILLS RANCH

EXISTING ROUND DOWNEED
FENCE WITH THE ESTATES AT
ROLLING HILLS RANCH

EXISTING ROUND DOWNEED
FENCE WITH THE ESTATES AT
ROLLING HILLS RANCH

EXISTING ROUND DOWNEED
FENCE WITH THE ESTATES AT
ROLLING HILLS RANCH

EXISTING ROUND DOWNEED
FENCE WITH THE ESTATES AT
ROLLING HILLS RANCH

EXISTING ROUND DOWNEED
FENCE WITH THE ESTATES AT
ROLLING HILLS RANCH

EXISTING ROUND DOWNEED
FENCE WITH THE ESTATES AT
ROLLING HILLS RANCH

EXISTING ROUND DOWNEED
FENCE WITH THE ESTATES AT
ROLLING HILLS RANCH

EXISTING ROUND DOWNEED
FENCE WITH THE ESTATES AT
ROLLING HILLS RANCH

EXISTING ROUND DOWNEED
FENCE WITH THE ESTATES AT
ROLLING HILLS RANCH

EXISTING ROUND DOWNEED
FENCE WITH THE ESTATES AT
ROLLING HILLS RANCH

EXISTING ROUND DOWNEED
FENCE WITH THE ESTATES AT
ROLLING HILLS RANCH

EXISTING ROUND DOWNEED
FENCE WITH THE ESTATES AT
ROLLING HILLS RANCH

EXISTING ROUND DOWNEED
FENCE WITH THE ESTATES AT
ROLLING HILLS RANCH

EXISTING ROUND DOWNEED
FENCE WITH THE ESTATES AT
ROLLING HILLS RANCH

EXISTING ROUND DOWNEED
FENCE WITH THE ESTATES AT
ROLLING HILLS RANCH

EXISTING ROUND DOWNEED
FENCE WITH THE ESTATES AT
ROLLING HILLS RANCH

EXISTING ROUND DOWNEED
FENCE WITH THE ESTATES AT
ROLLING HILLS RANCH

EXISTING ROUND DOWNEED
FENCE WITH THE ESTATES AT
ROLLING HILLS RANCH

EXISTING ROUND DOWNEED
FENCE WITH THE ESTATES AT
ROLLING HILLS RANCH

EXISTING ROUND DOWNEED
FENCE WITH THE ESTATES AT
ROLLING HILLS RANCH

EXISTING ROUND DOWNEED
FENCE WITH THE ESTATES AT
ROLLING HILLS RANCH

EXISTING ROUND DOWNEED
FENCE WITH THE ESTATES AT
ROLLING HILLS RANCH

EXISTING ROUND DOWNEED
FENCE WITH THE ESTATES AT
ROLLING HILLS RANCH

EXISTING ROUND DOWNEED
FENCE WITH THE ESTATES AT
ROLLING HILLS RANCH

EXISTING ROUND DOWNEED
FENCE WITH THE ESTATES AT
ROLLING HILLS RANCH

EXISTING ROUND DOWNEED
FENCE WITH THE ESTATES AT
ROLLING HILLS RANCH



NES, Inc.
619 N. Cascade Avenue, Suite 200
Colorado Springs, CO 80903
Tel. 719.471.0073
Fax. 719.471.0367
www.nescolorado.com
© 2012. All Rights Reserved.

DRAWN: / LANDSCAPE ARCHITECT

IN ASSOCIATION WITH

ROLLING HILLS
RANCH NORTH
FILINGS 1 & 2
AT MERIDIAN
RANCH

PUD DEVELOPMENT /
PRELIMINARY PLAN

DATE: 12/07/2023
PROJECT MGR: B. PERKINS
PREPARED BY: A. ROMAN

ENTITLEMENT

DATE: 2/20/2024
BY: BP

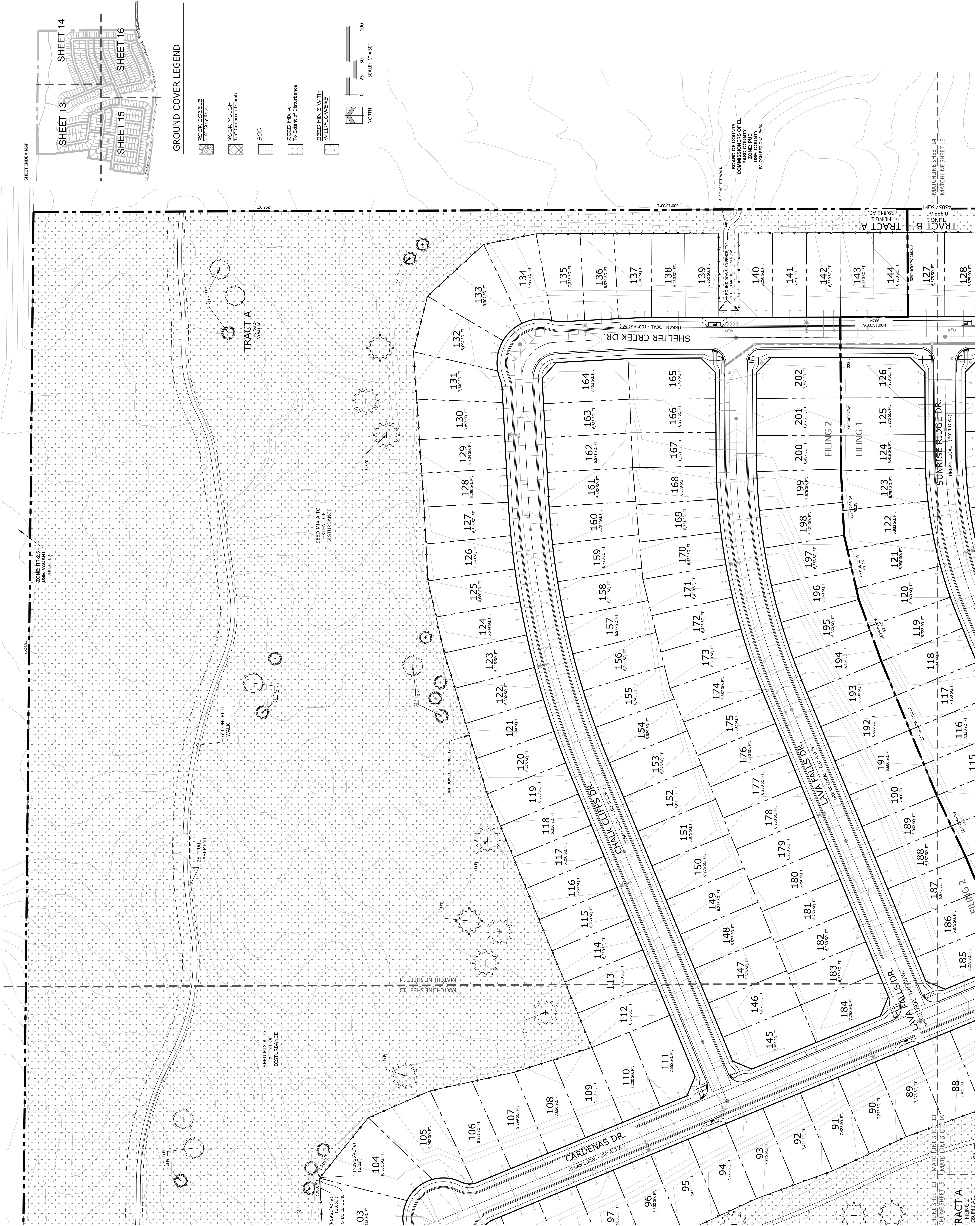
DESCRIPTION:
CONSISTENT REVIEW
COMPLETED

Landscape Plan

13

13 of 16

PLAN TITLE #

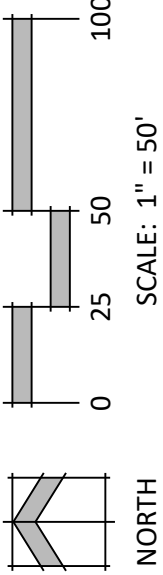


SHEET INDEX MAP



GROUND COVER LEGEND

- ROCK COBBLE
2-4" Grey Rose
- ROCK MULCH
1.5" Cinnamon Granite
- SO2
- SEED MIX A
TO EXTENT OF DISTURBANCE
- SEED MIX B WITH
WILDFLOWERS



NES, Inc.
619 N. Cascade Avenue, Suite 200
Colorado Springs, CO 80903
Tel. 719.471.0073
Fax 719.471.0267
www.nescolorado.com
© 2012 All Rights Reserved.

PLANNING / LANDSCAPE ARCHITECT

IN ASSOCIATION WITH

ROLLING HILLS
RANCH NORTH
FILINGS 1 & 2
AT MERIDIAN
RANCH

PUD DEVELOPMENT /
PRELIMINARY PLAN

PROJECT INFO
DATE: 12/27/2024
DESIGNER: J. BROWN
PREPARED BY: A. ROMAN

SCALE

ENTITLEMENT

DATE: 2/20/2024
BY: BP
DESCRIPTION: PER COUNTY REVIEW
COMMENTS:

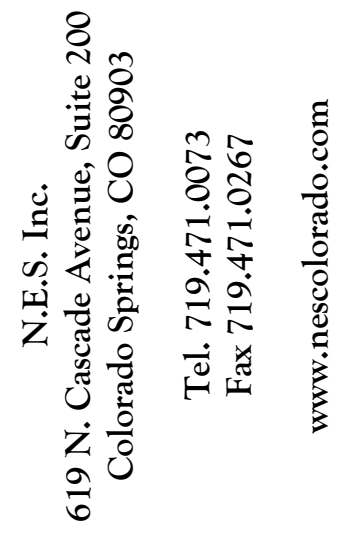
ISSUE / REVISION

Landscape Plan

14

14 OF 16

SHEET NUMBER
PLAN FILE #



N.E.S. Inc.
619 N. Cascade Avenue, Suite 200
Colorado Springs, CO 80903

Tel. 719.471.0073
Fax 719.471.0267

www.nescolorado.com

© 2012. All Rights Reserved.

ASSOCIATION WITH

ROLLING HILLS
RANCH NORTH
FILINGS 1 & 2
AT MERIDIAN
RANCH

PUD DEVELOPMENT /
PRELIMINARY PLAN

DATE: 12/07/2023
PROJECT MGR: B. PERKINS
PREPARED BY: A. ROMAN

ENTITLEMENT

DIN

DATE:	BY:	DESCRIPTION:
2/20/2024	BP	PER COUNTY REVIEW COMMENTS

NOI

Landscape Plan

151

15 OF 16

• 311

PC Report Packet
Page 49 of 56



December 15, 2023

Ryan Howser, Project Manager
El Paso County Development Services Department
Sent via online portal at: epcdevplanreview.com

Re: Rolling Hills Ranch North Filings 1 & 2 PUDSP
File #: PUDSP235
Part of the NE ¼ and part of the E ½ NW ¼ of Sec. 20, Twp. 12 South, Rng. 64 West, 6th P.M.
Water Division 2, Water District 10
Upper Black Squirrel Creek Designated Basin
CDWR Assigned Subdivision No. 31101

Dear Ryan Howser:

We have received the above-referenced proposal to subdivide 148.873 acres into 441 single-family lots, landscaping, open space, and trails. The proposed water supply is service provided by the Meridian Service Metropolitan District (MSMD).

Water Supply Demand

The proposed water uses are household use and irrigation with a total estimated water demand of 137.7 acre-feet/year.

Source of Water Supply

The proposed water supply is service provided by the Meridian Service Metropolitan District (MSMD). According to the August 23, 2023 will serve letter ("Letter"), MSMD is committed to serving the development.

According to Table 3 of the September 2023 Water Resources Report ("Report"), MSMD obtains their supply from nontributary Denver Basin bedrock aquifer wells and alluvial wells which withdraw groundwater under various determinations of water rights or final permits owned and controlled by MSMD as summarized below:

1. Meridian Ranch (Determination of Water Right nos. 154-BD, 155-BD, 156-BD, and 157-BD),
2. Guthrie Ranch (230-BD/4438-BD, 50% interested in 229-BD/4437-BD, 50% interest in 230-BD/4436-BD, and Final Permit nos. 612-RFP and 27554-FP),
3. Latigo Trails (568-BD, 569-BD, 570-BD, and 46406-F), and
4. Hart Ranch (2099-BD and 2100-BD).

According to the Letter, Report, and additional information provided to this office on December 14, 2023 by Tom Kerby, MSMD owns and controls 2,089 acre-feet/year based on a 300-year supply. This office calculates that MSMD has 2,022 acre-feet/year of available supply after subtracting the district's replacement and relinquishment requirements.



The current total demand on MSMD is approximately 1,687 acre-feet/year.¹ According to the Letter, the additional 137.7 acre-feet/year of demand from this development brings the demand on MSMD up to approximately 1,824 acre-feet/year. Therefore, it appears there are 198 acre-feet/year of surplus supply available to MSMD after meeting its commitments, replacement, and relinquishment requirements.

Well nos. 612-RFP and 27554-FP withdraw water from the Upper Black Squirrel Creek alluvial aquifer, which is currently considered to be a renewable source. The other proposed source of water for this subdivision is bedrock aquifers in the Denver Basin. The State Engineer's Office (SEO) does not have evidence regarding the length of time for which this source will be a physically and economically viable source of water. According to section 37-90-107(7)(a), C.R.S., "Permits issued pursuant to this subsection (7) shall allow withdrawals on the basis of an aquifer life of 100 years." Based on this allocation approach, the annual amounts of water determined in MSMD's determinations of water rights are equal to one percent of the total amount or 6,135 acre-feet as shown on the attached SEO's Table and as determined by rule 5.3.2.1 of the Designated Basin Rules, 2 CCR 410-1. Therefore, the water may be withdrawn in those annual amounts for a maximum of 100 years.

The El Paso County Land Development Code, Section 8.4.7.(B)(7)(b) states:

“(7) Finding of Sufficient Quantity

(b) Required Water Supply. The water supply shall be of sufficient quantity to meet the average annual demand of the proposed subdivision for a period of 300 years.”

The State Engineer's Office does not have evidence regarding the length of time for which this source will “meet the average annual demand of the proposed subdivision.” However, treating El Paso County's requirement as an allocation approach based on 300 years, the allowed average annual amount of withdrawal of allocated Denver Basin aquifer water would be reduced to one third of that amount. The available supply of 2,089 acre-feet/year or 2,022 acre-feet/year after accounting for replacement and relinquishment requirements based on a 300-year supply is greater than the annual demand on MSMD of 1,824 acre-feet/year. As a result, the water may be withdrawn in that annual amount for a maximum of 300 years. Note that it is anticipated that the demand from Meridian Ranch at full build out will be 1,952 acre-feet/year which is less than MSMD's available supply.

Additional Comments

The submittal indicates that a storm water detention structure is part of this project. The Applicant should be aware that, unless the structure can meet the requirements of a “storm water detention and infiltration facility” as defined in Designated Basin Rule 5.11, the structure may be subject to administration by this office. The Applicant should review Rule 5.11 to determine whether the structure meets the requirements of the Rule and ensure any notification requirement is met.

State Engineer's Office Opinion

Based upon the above and pursuant to section 30-28-136(1)(h)(I) and 30-28-136(1)(h)(II), C.R.S., it is our opinion that the proposed water supply is adequate and can be provided without causing injury to decreed water rights.

¹ This office calculates the district has a demand of 1,686 acre-feet/year, but this difference may be due to a rounding error.

Our opinion that the water supply is **adequate** is based on our determination that the amount of water required annually to serve the subdivision is currently physically available, based on current estimated aquifer conditions.

Our opinion that the water supply can be **provided without causing injury** is based on our determination that the amount of water that is legally available on an annual basis, according to the statutory **allocation** approach, for the proposed uses on the subdivided land is greater than the annual amount of water required to supply the district's commitments.


Our opinion is qualified by the following:

The Ground Water Commission has retained jurisdiction over the final amount of water available pursuant to the above-referenced water rights, pending actual geophysical data from the aquifer.

The amounts of water in the Denver Basin aquifer, and identified in this letter, are calculated based on estimated current aquifer conditions. The majority of MSMD's source of water is from non-renewable aquifers, the allocations of which are based on a 100-year aquifer life. The county should be aware that the economic life of a water supply based on wells in a given Denver Basin aquifer may be less than the 100 years (or 300 years) used for allocation due to anticipated water level declines. We recommend that the county determine whether it is appropriate to require development of renewable water resources for this subdivision to provide for a long-term water supply.

Please contact Wenli.Dickinson@state.co.us or (303) 866-3581 x8206 with any questions.

Sincerely,


Ioana Comaniciu, P.E.
Water Resource Engineer

Attachment: SEO's MSMD Supply and Commitment Table Updated December 14, 2023

Ec: Meridian Ranch Metro District file
Upper Black Squirrel Creek Ground Water Management District (ubscgwmd@gmail.com)

County Attorney

Kenneth R. Hodges, County Attorney
719-520-6485
Centennial Hall
200 S. Cascade, Suite 150
Colorado Springs, CO 80903
www.ElPasoCo.com

Board of County Commissioners
Holly Williams, District 1
Carrie Geitner, District 2
Stan VanderWerf, District 3
Longinos Gonzalez, Jr., District 4
Cami Bremer, District 5

March 19, 2024

PUDSP-23-5 Rolling Hills Ranch North PUD

Reviewed by: Lori L. Seago, Senior Assistant County Attorney
April Willie, Paralegal

WATER SUPPLY REVIEW AND RECOMMENDATIONS

Project Description

1. This is a Preliminary/Final PUD proposal by Meridian Ranch Investments Inc. ("Applicant"), to subdivide an approximately 148.873 +/- acre tract of land into 441 single-family units (the "Property"). The property is zoned PUD (Planned Unit Development).

Estimated Water Demand

2. Pursuant to the Water Supply Information Summary ("WSIS"), the subdivision demand is 136.7 acre-feet per year for 441 lots with irrigation of 0.7 acre-feet per year for a total demand of 137.4 acre-feet per year. The Applicant must therefore be able to provide a supply of 41,220 acre-feet of water (137.4 acre-feet per year x 300 years) to meet the County's 300-year water supply requirement.

Proposed Water Supply

3. The Applicant has provided for the source of water to derive from the Meridian Service Metropolitan District ("District"). As detailed in the Water Resources Report dated January 2024 ("Report"), the average daily use for each of the 441 lots will be 0.31 acre-feet per dwelling unit/year (includes outside irrigation) for a total water demand of 136.7 acre-feet/year. Irrigation of parks and right-of-way landscaping will create an additional demand of 0.7 acre-feet/year. According to the Report, the District owns 2,089 acre-feet/year based on a 300-year supply. Of that amount, the District currently has 2,022 acre-feet/year of water available for

ASSISTANT COUNTY ATTORNEYS

NATHAN J. WHITNEY
CHRISTOPHER M. STRIDER

STEVEN A. KLAFFKY
TERRY A. SAMPLE

LORI L. SEAGO

BRYAN E. SCHMID
STEVEN W. MARTYN

MERI GERINGER
DOREY L. SPOTTS

primary supply. The current total demand on the District is 1,687 acre-feet/year, leaving a surplus of 335 acre-feet per year.

4. The District's General Manager provided a letter of commitment for Rolling Hills Ranch North PUD dated August 23, 2023, in which the District General Manager stated that the District will provide water service to the Property in the amount of 137 acre-feet per year. The County Attorney's Office recommends requiring the Applicant to provide an updated letter committing to serve 137.4 acre-feet/year to the subdivision.

State Engineer's Office Opinion

5. In a letter dated December 15, 2023, the State Engineer reviewed the proposal to subdivide the 148.873 +/- acre parcel into 441 single-family lots, landscaping, open space, and trails. The State Engineer stated that the "[t]he proposed water supply is service provided by the Meridian Service Metropolitan District (MSMD). . . MSMD is committed to serving the development." The State Engineer indicates a water demand of 137.7 acre-feet/year for 441 single-family lots. The State Engineer indicates they received a letter of commitment dated August 23, 2023 from the District which indicated that MSMD is committed to serving the development. Finally, "pursuant to section 30-28-136(1)(h)(I) and 30-28-136(1)(h)(II), C.R.S., it is our opinion that the proposed water supply is adequate and can be provided without causing injury to decreed water rights."

Recommended Findings

6. Quantity and Dependability. Applicant's water demand for Rolling Hills Ranch North PUD is 137.4 acre-feet per year to be supplied by the Meridian Service Metropolitan District. **Based on the water demand of 137.4 acre-feet/year for the development and the District's availability of 335 acre-feet/year, the County Attorney's Office recommends a finding of sufficient water quantity and dependability for Rolling Hills Ranch North PUD.**

7. Quality. The water quality requirements of Section 8.4.7.B.10 of the Code must be satisfied. Section 8.4.7.B.10.g. of the Code allows for the presumption of acceptable water quality for projects such as this where water is supplied by an existing Community Water Supply operating in conformance with Colorado Primary Drinking Water Regulations unless there is evidence to the contrary.

8. Basis. The County Attorney's Office reviewed the following documents in preparing this review: the Water Supply Information Summary, the Water Resources Report dated January 2024, the Meridian Service Metropolitan District letter dated August 23, 2023, and the State Engineer Office's Opinion dated December 15, 2023. The recommendations herein are based on the information contained in such documents and on compliance with the requirements set forth below. ***Should the information relied upon be found to be incorrect, or should the below requirements not be met, the County Attorney's Office reserves the right to amend or withdraw its recommendations.***

REQUIREMENTS:

- A. Applicant and all future owners of lots within this filing shall be advised of, and comply with, the conditions, rules, regulations, limitations, and specifications set by the District.
- B. Prior to the Planning Commission hearing on this application, Applicant shall obtain an updated commitment letter from the Meridian Service Metropolitan District committing to serve 137.4 acre/feet per year to this subdivision.

cc. Ryan Howser, Project Manager, Planner

MAP AMENDMENT (REZONING) TO PLANNED UNIT DEVELOPMENT (PUD) AND PRELIMINARY PLAN
(RECOMMEND APPROVAL)

_____ moved that the following Resolution be adopted:

BEFORE THE PLANNING COMMISSION

OF THE COUNTY OF EL PASO

STATE OF COLORADO

RESOLUTION NO. PUDSP235
ROLLING HILLS RANCH NORTH

WHEREAS, GTL, Inc. did file an application with the El Paso County Planning and Community Development Department for approval of a Map Amendment (Rezoning) to amend the El Paso County Zoning Map for property in the unincorporated area of El Paso County as described in Exhibit A and depicted in Exhibit B, attached hereto and incorporated herein by reference, from the PUD (Planned Unit Development) zoning district to the PUD (Planned Unit Development) zoning district with a Preliminary Plan proposing 441 single-family residential lots, three (3) tracts, 46 acres of open space, and 24 acres of land dedicated for public right-of-way; and

WHEREAS, a public hearing was held by this Commission on April 18, 2024; and

WHEREAS, based on the evidence, testimony, exhibits, consideration of the Master Plan for the unincorporated area of the County, presentation and comments of the El Paso County Planning and Community Development Department and other County representatives, comments of public officials and agencies, comments from all interested persons, comments by the general public, and comments by the El Paso County Planning Commission members during the hearing, this Commission finds as follows:

1. The application was properly submitted for consideration by the Planning Commission;
2. Proper posting, publication, and public notice were provided as required by law for the hearing before the Planning Commission;
3. The hearing before the Planning Commission was extensive and complete, that all pertinent facts, matters, and issues were submitted and that all interested persons and the general public were heard at that hearing;
4. All exhibits were received into evidence;

5. The proposed land use does not permit the use of an area containing a commercial mineral deposit in a manner which would interfere with the present or future extraction of such deposit by an extractor;
6. All data, surveys, analyses, studies, plans, and designs as are required by the State of Colorado and El Paso County have been submitted, reviewed, and found to meet all sound planning and engineering requirements of the El Paso County Subdivision Regulations; and
7. For the above-stated and other reasons, the proposed amendment of the El Paso County Zoning Map is in the best interest of the health, safety, morals, convenience, order, prosperity, and welfare of the citizens of El Paso County.

WHEREAS, the Planning Commission and Board of County Commissioners shall determine that the request meets the criteria for approval outlined in Sections 4.2.6 and Section 7.2.1 of the El Paso County Land Development Code ("Code") (as amended):

1. The proposed PUD district zoning advances the stated purposes set forth in Chapter 4 of the Code.
2. The application is in general conformity with the Master Plan;
3. The proposed development is in compliance with the requirements of the Code and all applicable statutory provisions and will not otherwise be detrimental to the health, safety, or welfare of the present or future inhabitants of El Paso County;
4. The subject property is suitable for the intended uses and the use is compatible with both the existing and allowed land uses on the neighboring properties, will be in harmony and responsive with the character of the surrounding area and natural environment, and will not have a negative impact upon the existing and future development of the surrounding area;
5. The proposed development provides adequate consideration for any potentially detrimental use to use relationships (e.g. commercial use adjacent to single family use) and provides an appropriate transition or buffering between uses of differing intensities both on-site and off-site which may include innovative treatments of use to use relationships;
6. The allowed uses, bulk requirements and landscaping and buffering are appropriate to and compatible with the type of development, the surrounding neighborhood or area and the community;
7. Areas with unique or significant historical, cultural, recreational, aesthetic or natural features are preserved and incorporated into the design of the project;
8. Open spaces and trails are integrated into the development plan to serve as amenities to residents and provide reasonable walking and biking opportunities;

9. The proposed development will not overburden the capacities of existing or planned roads, utilities, and other public facilities (e.g., fire protection, police protection, emergency services, and water and sanitation), and the required public services and facilities will be provided to support the development when needed;
10. The proposed development would be a benefit through the provision of interconnected open space, conservation of environmental features, aesthetic features and harmonious design, and energy efficient site design;
11. The proposed land use does not permit the use of any area containing a commercial mineral deposit in a manner which would unreasonably interfere with the present or future extraction of such deposit unless acknowledged by the mineral rights owner;
12. Any proposed exception or deviation from the requirements if the zoning resolution or the subdivision regulation is warranted by virtue of the design and amenities incorporated in the development plan and development guide; and
13. The owner has authorized the application.

WHEREAS, the applicants have requested the proposed PUD be reviewed and considered as a Preliminary Plan, the requirements identified in Chapter 7 and Chapter 8 of the El Paso County Land Development Code ("Code") (as amended) requires the Planning Commission and the Board of County Commissioners find that the following additional criteria for approval have also been met:

1. The proposed Subdivision is in general conformance with the goals, objectives, and policies of the Master Plan;
2. The Subdivision is consistent with the purposes of the Code;
3. The Subdivision is in conformance with the subdivision design standards and any approved Sketch Plan;
4. A sufficient water supply has been acquired in terms of quantity, quality, and dependability for the type of subdivision proposed, as determined in accordance with the standards set forth in the water supply standards [C.R.S. § 30-28-133(6)(a)] and the requirements of Chapter 8 of the Code;
5. A public sewage disposal system has been established and, if other methods of sewage disposal are proposed, the system complies with State and local laws and regulations, [C.R.S. § 30-28-133(6)(b)] and the requirements of Chapter 8 of the Code;

6. All areas of the proposed Subdivision, which may involve soil or topographical conditions presenting hazards or requiring special precautions, have been identified and the proposed Subdivision is compatible with such conditions. [C.R.S. § 30-28-133(6)(c)];
7. Adequate drainage improvements complying with State law [C.R.S. § 30-28-133(3)(c)(VIII)] and the requirements of the Code and the Engineering Criteria Manual ("ECM") are provided by the design;
8. The location and design of the public improvements proposed in connection with the Subdivision are adequate to serve the needs and mitigate the effects of the development;
9. Legal and physical access is or will be provided to all parcels by public rights-of-way or recorded easement, acceptable to the County in compliance with the Code and the ECM;
10. The proposed Subdivision has established an adequate level of compatibility by (1) incorporating natural physical features into the design and providing sufficient open spaces considering the type and intensity of the Subdivision; (2) incorporating site planning techniques to foster the implementation of the County's plans, and encourage a land use pattern to support a balanced transportation system, including auto, bike and pedestrian traffic, public or mass transit if appropriate, and the cost effective delivery of other services consistent with adopted plans, policies and regulations of the County; (3) incorporating physical design features in the Subdivision to provide a transition between the Subdivision and adjacent land uses; (4) incorporating identified environmentally sensitive areas, including but not limited to, wetlands and wildlife corridors, into the design; and (5) incorporating public facilities or infrastructure, or provisions therefore, reasonably related to the proposed Subdivision so the proposed Subdivision will not negatively impact the levels of service of County services and facilities;
11. Necessary services, including police and protection, recreation, utilities, open space, and transportation systems are or will be available to serve the proposed Subdivision;
12. The Subdivision provides evidence to show that the proposed methods for fire protection comply with Chapter 6 of the Code; and
13. The proposed Subdivision meets other applicable sections of Chapter 6 and 8 of the Code.

WHEREAS, a sufficient water supply has been acquired in terms of quantity, quality, and dependability for the type of Subdivision proposed, as determined in accordance with the standards set forth in the water supply standards [C.R.S. § 30-28-133(6)(a)] and the requirements of Chapter 8 of the Code.

NOW, THEREFORE, BE IT RESOLVED, the El Paso County Planning Commission recommends that the petition of GTL, Inc. for approval of a Map Amendment (Rezoning) to amend the El Paso County Zoning Map for property located in the unincorporated area of El Paso County from the PUD

(Planned Unit Development) zoning district to the PUD (Planned Unit Development) zoning district with a Preliminary Plan proposing 441 single-family residential lots, three (3) tracts, 46 acres of open space, and 24 acres of land dedicated for public right-of-way be approved by the Board of County Commissioners with the following conditions and notations:

CONDITIONS

1. Development of the property shall be in accordance with this PUD Development Plan. Minor changes in the PUD Development Plan, including a reduction in residential density, may be approved administratively by the Director of the Planning and Community Development Department consistent with the Land Development Code. Any substantial change will require the submittal of a formal PUD Development Plan amendment application.
2. Approved land uses are those defined in the PUD Development Plan.
3. All owners of record must sign the PUD Development Plan.
4. The PUD Development Plan shall be recorded in the office of the El Paso County Clerk & Recorder prior to scheduling any Final Plats for hearing by the Planning Commission. The development guide shall be recorded in conjunction with the PUD Development Plan.
5. Applicable park, school, drainage, bridge, and traffic fees shall be paid to El Paso County Planning and Community Development at the time of Final Plat(s) recordation.
6. Applicant shall comply with all requirements contained in the Water Supply Review and Recommendations, dated 3/19/2024, as provided by the County Attorney's Office.

NOTATIONS

1. Subsequent Final Plat Filings may be approved administratively by the Planning and Community Development Director.
2. If a zone or rezone petition has been disapproved by the Board of County Commissioners, resubmittal of the previously denied petition will not be accepted for a period of one (1) year if it pertains to the same parcel of land and is a petition for a change to the same zone that was previously denied. However, if evidence is presented showing that there has been a substantial change in physical conditions or circumstances, the Planning Commission may reconsider said petition. The time limitation of one (1) year shall be computed from the date of final determination by the Board of County Commissioners or, in the event of court litigation, from the date of the entry of final judgment of any court of record.
3. Rezoning requests not forwarded to the Board of County Commissioners for consideration within 180 days of Planning Commission action will be deemed withdrawn and will have to be resubmitted in their entirety.

- 4. Preliminary Plans not forwarded to the Board of County Commissioners within 12 months of Planning Commission action shall be deemed withdrawn and shall have to be resubmitted in their entirety.
- 5. Approval of the Preliminary Plan will expire after two (2) years unless a Final Plat has been approved and recorded or a time extension has been granted.

BE IT FURTHER RESOLVED that the Planning Commission recommends approval of the Planned Unit Development (PUD) as a Preliminary Plan of the Rolling Hills Ranch North Subdivision.

AND BE IT FURTHER RESOLVED that this Resolution and the recommendations contained herein be forwarded to the El Paso County Board of County Commissioners for its consideration.

_____ seconded the adoption of the foregoing Resolution.

The roll having been called, the vote was as follows: (circle one)

Thomas Bailey	aye / no / non-voting / recused / absent
Sarah Brittain Jack	aye / no / non-voting / recused / absent
Jim Byers	aye / no / non-voting / recused / absent
Jay Carlson	aye / no / non-voting / recused / absent
Becky Fuller	aye / no / non-voting / recused / absent
Jeffrey Markewich	aye / no / non-voting / recused / absent
Brandy Merriam	aye / no / non-voting / recused / absent
Eric Moraes	aye / no / non-voting / recused / absent
Kara Offner	aye / no / non-voting / recused / absent
Bryce Schuettpeiz	aye / no / non-voting / recused / absent
Wayne Smith	aye / no / non-voting / recused / absent
Tim Trowbridge	aye / no / non-voting / recused / absent
Christopher Whitney	aye / no / non-voting / recused / absent

The Resolution was adopted by a vote of ____ to ____ by the El Paso County Planning Commission, State of Colorado.

DONE THIS 18th day of April 2024 at Colorado Springs, Colorado.

EL PASO COUNTY PLANNING COMMISSION

By: _____
Thomas Bailey, Chair

EXHIBIT A

KNOW ALL MEN BY THESE PRESENTS:

THAT GTL, INC. DBA GTL DEVELOPMENT, INC., THEODORE TCHANG, PRESIDENT BEING THE OWNER OF THE FOLLOWING DESCRIBED TRACT OF LAND:

A PARCEL OF LAND LOCATED IN A PORTION OF SECTION 20, IN TOWNSHIP 12 SOUTH, RANGE 64 WEST OF THE 6TH PRINCIPAL MERIDIAN, MORE PARTICULARLY DESCRIBED AS FOLLOWS:

BEGINNING AT A POINT ON THE EASTERLY RIGHT-OF-WAY OF ESTATE RIDGE DRIVE AS-DEDICATED IN THE ESTATES AT ROLLING HILLS RANCH FILING NO. 2, RECORDED WITH RECEPTION NO. 222714944 IN THE RECORDS OF EL PASO COUNTY, POINT BEING ON THE EASTERN BOUNDARY LINE OF SAID FILING;

THE FOLLOWING NINE (9) COURSES ARE ON SAID BOUNDARY LINE:

1. THENCE N07°26'02"E A DISTANCE OF 616.00 FEET;
2. THENCE N52°26'02"E A DISTANCE OF 31.11 FEET;
3. THENCE N07°26'02"E A DISTANCE OF 60.00 FEET;
4. THENCE S82°33'58"E A DISTANCE OF 168.00 FEET;
5. THENCE N07°26'02"E A DISTANCE OF 495.00 FEET;
6. THENCE S82°33'58"E A DISTANCE OF 180.00 FEET;
7. THENCE N06°14'24"W A DISTANCE OF 495.03 FEET;
8. THENCE N06°47'53"W A DISTANCE OF 290.00 FEET;
9. THENCE N00°34'17"E A DISTANCE OF 340.00 FEET TO A POINT ON THE NORTH LINE OF THE NORTHWEST ½ OF SAID SECTION 20;

THE FOLLOWING COURSE IS ON SAID SECTION LINE:

10. THENCE S89°25'43"E A DISTANCE OF 2624.85 FEET TO A POINT ON THE WESTERN BOUNDARY OF FALCON REGIONAL PARK RECORDED WITH RECEPTION NO. 214093227;

THE FOLLOWING COURSE IS ON SAID BOUNDARY LINE:

11. THENCE S00°13'03"E A DISTANCE OF 2064.39 FEET TO A NON-TANGENT CURVE TO THE LEFT, POINT BEING ON THE NORTHERN BOUNDARY OF THE SANCTUARY FILING NO. 1 AT MERIDIAN RANCH RECORDED WITH RECEPTION NO. 223715140 IN THE RECORDS OF EL PASO COUNTY;

THE FOLLOWING NINE (9) COURSES ARE ON THE BOUNDARY LINE OF SAID THE SANCTUARY FILING NO. 1 AT MERIDIAN RANCH:

25. THENCE ON THE ARC OF SAID CURVE, HAVING A RADIUS OF 2050.00 FEET, A DELTA ANGLE OF 05°02'20", AN ARC LENGTH OF 180.29 FEET, WHOSE LONG CHORD BEARS S75°52'06"W A DISTANCE OF 180.23 FEET;
26. THENCE N62°31'53"W A DISTANCE OF 31.42 FEET;
27. THENCE S71°53'44"W A DISTANCE OF 60.00 FEET;
28. THENCE S26°19'21"W A DISTANCE OF 31.42 FEET TO A NON-TANGENT CURVE TO THE LEFT;
29. THENCE ON THE ARC OF SAID CURVE, HAVING A RADIUS OF 2050.00 FEET, A DELTA ANGLE OF 02°03'13", AN ARC LENGTH OF 73.48 FEET, WHOSE LONG CHORD BEARS S69°24'55"W A DISTANCE OF 73.48 FEET;
30. THENCE S68°23'18"W A DISTANCE OF 399.50 FEET TO A POINT OF CURVE TO THE RIGHT;
31. THENCE ON THE ARC OF SAID CURVE, HAVING A RADIUS OF 1930.00 FEET, A DELTA ANGLE OF 29°02'43", AN ARC LENGTH OF 978.39 FEET, WHOSE LONG CHORD BEARS S82°54'40"W A DISTANCE OF 967.95 FEET;
32. THENCE N82°33'58"W A DISTANCE OF 1387.37 FEET;
33. THENCE N37°33'58"W A DISTANCE OF 31.11 FEET TO THE POINT OF BEGINNING;

THE ABOVE PARCEL OF LAND CONTAINS 148.873 ACRES, MORE OR LESS.

BEARINGS ARE BASED ON THE SOUTH LINE OF THE SW ¼ OF SECTION 29, TOWNSHIP 12 SOUTH, RANGE 64 WEST OF THE 6TH P.M., ASSUMED TO BEAR S89°25'42"E FROM THE SOUTHWEST CORNER OF SAID SECTION 29 (A STONE W/SCRIBED "X") TO THE SOUTH QUARTER CORNER OF SAID SECTION 29 (3.25" ALUM. CAP LS #30087).

