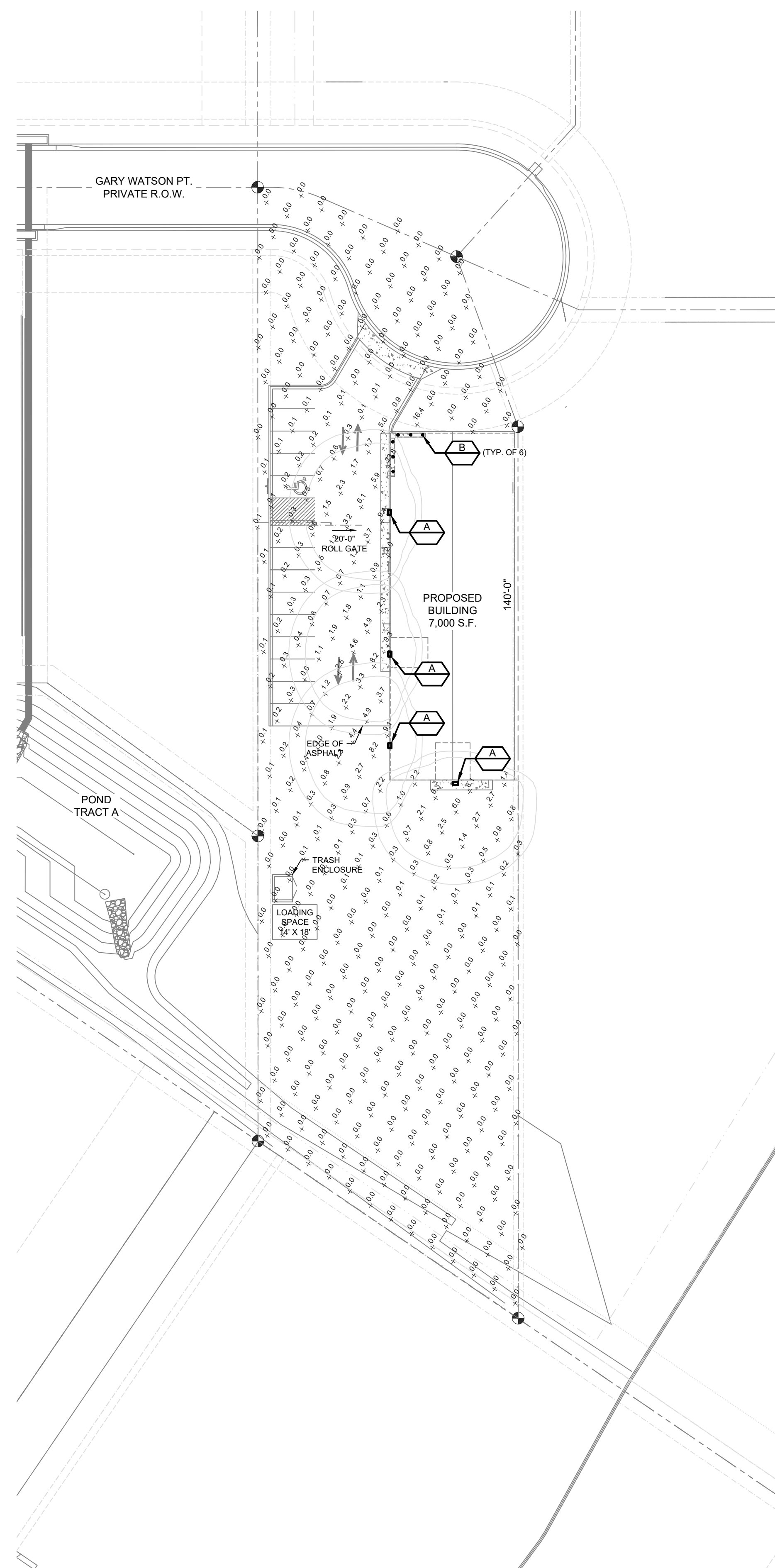


Schedule																	
Symbol	Label	Image	QTY	Manufacturer	Catalog Number	Description	Lamp	Number Lamps	Filename	Lumens per Lamp	Lumen Multiplier	LLF	Wattage	Efficiency	Distribution	Polar Plot	Notes
	A		4	Lithonia Lighting	WDGE2 LED P5 40K 80CRI VF	WDGE2 LED WITH P5 - PERFORMANCE PACKAGE, 4000K, 80CRI, VISUAL COMFORT FORWARD OPTIC		1	WDGE2_LED_P5_40K_80CRI_VF.ies	5996	1	0.92	48.44	100%	TYPE III, VERY SHORT, BUG RATING: B1 - U0 - G1		
	B		6	Lithonia Lighting	LDN6 40/15 LO6AR LSS	6IN LDN, 4000K, 1500LM, CLEAR, SEMI-SPECULAR REFLECTOR, CR180		1	LDN6_40_15_LO6AR_LSS.ies	1516	1	0.92	17.52	100%	DIRECT, SC-0=1.02, SC-90=1.03		

Statistics						
Description	Symbol	Avg	Max	Min	Max/Min	Avg/Min
Site		0.7 fc	23.8 fc	0.0 fc	N/A	N/A



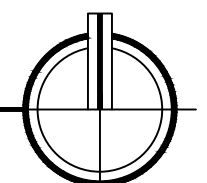
THIS DOCUMENT AND ITS CONTENTS ARE THE WORK PRODUCT AND PROPERTY OF 51EC, INC., WHICH RETAINS ALL COMMON LAW, STATUTORY AND OTHER RESERVED RIGHTS, INCLUDING THE COPYRIGHT.

**CBP 2-1, LOT 3**  
**PHOTOMETRICS**  
**7755 GARY WATSON POINT**  
**EL PASO COUNTY, CO**

REV	DESCRIPTION	DRAWN	CHECK	APPR	DATE

ISSUANCE:	<b>ISSUED FOR REVIEW</b>
CLIENT:	HAMMERS CONSTRUCTION 1411 WOOLSEY HEIGHTS COLORADO SPRINGS, CO 80915
ARCHITECT:	
PROJECT NO:	5151-20-05D
TITLE:	PHOTOMETRICS SITE PLAN
SHEET NO:	<b>9 OF 11</b>

PHOTOMETRICS SITE PLAN  
 SCALE: 1/32" = 1'-0"





THIS DOCUMENT AND ITS CONTENTS ARE THE WORK PRODUCT AND PROPERTY OF 51EC, INC., WHICH RETAINS ALL COMMON LAW, STATUTORY AND OTHER RESERVED RIGHTS, INCLUDING THE COPYRIGHT.

CBP 2-1, LOT 3  
PHOTOMETRICS  
7755 GARY WATSON POINT  
EL PASO COUNTY, CO

REV	DESCRIPTION	DRAWN	CHECK	APPR	DATE

ISSUANCE:  
**ISSUED FOR REVIEW**

CLIENT:  
HAMMERS CONSTRUCTION  
1411 WOOLSEY HEIGHTS  
COLORADO SPRINGS, CO 80915

ARCHITECT:

PROJECT NO:  
5151-20-05D

TITLE:  
**LIGHTING CUT SHEETS**

SHEET NO:  
**10 OF 11**

### WDGE2 LED Architectural Wall Sconce

**Specifications**  
Depth (D1): 7"  
Depth (D2): 1.5"  
Height: 9"  
Width: 11.5"  
Weight: 13.5 lbs (without options)

**WDGE LED Family Overview**

Luminaire	Standard E30, 0°C	Cold E30, -20°C	Sensor	Lumens (4000K)					
				P1	P2	P3	P4	P5	P6
WDGE1 LED	4W	—	—	3,200	2,000	—	—	—	—
WDGE2 LED	10W	18W	Standalone / r/night	3,200	2,000	3,000	—	6,000	—
WDGE3 LED	15W	18W	Standalone / r/night	3,500	8,500	10,000	12,000	—	—
WDGE4 LED	—	—	Standalone / r/night	12,000	16,000	18,000	20,000	22,000	25,000

**Ordering Information**      **EXAMPLE: WDGE2 LED P3 40K 80CRI VF MVOLT SRM DOBXD**

Series	Package	Color Temperature	CR	Distribution	Voltage	Mounting	Shipped separately
WDGE2 LED	P1	P1SW	27K / 2700K	80CRI	VF	Visual comfort forward throw	MVOLT
	P2	P2SW	30K / 3000K	90CRI	SM	Surface mounting bracket	SRM
	P3	P3SW	35K / 3500K	—	VW	Visual comfort wide	480V
	P4	—	40K / 4000K	—	—	—	KW
	P5	—	50K / 5000K	—	—	—	—

**Options**

Option	Description	Finish
E4WH	Emergency battery backup, Certified in CA Title 20 MAEDBS (440, 0°C min)	DBR00
E10WH	Emergency battery backup, Certified in CA Title 20 MAEDBS (10W, 5°C min)	DBR00
E20WC	Emergency battery backup, Certified in CA Title 20 MAEDBS (18W, 20°C min)	DBR00
PE	PhotoCell, Button Type	DBR00
DS	Dual switching (comes with 2 drivers and 2 light engines, see page 3 for details)	DBR00
DM6	0-10V dimming wires pulled outside fixture (for use with an external control, ordered separately)	DBR00
BCE	Bottom conduit entry for back box (P88W), total of 4 entry points. See page 4 for box functionality	DBR00

**Accessories:** Order as separate catalog number:  
P105SCP FAK Power Sentry battery pack, T20 compliant, field installable, 10w constant power  
EAC ES3832 Compact interruptible emergency AC power system  
G6A6A II Oversized trim ring with 8" outside diameter

**Notes:**  
1 Overall height varies based on lumen package; refer to dimensional chart on page 3.  
2 Not available with emergency options.  
3 Not available with emergency options.  
4 Must specify voltage 120V or 277V.  
5 Available with clear (AI) reflector only.  
6 1/2" of plenum depth or top access required for battery pack maintenance.  
7 Specify voltage, ER for use with generator supply EM power. Will require an emergency hot lead and normal hot lead.  
8 Fixture begins at 80% light level. Must be specified with high-SM2 or SP500Z/ER. Only available with L20 and E21 drivers.

**Accessories:** Order as separate catalog number:  
P105SCP FAK Power Sentry battery pack, T20 compliant, field installable, 10w constant power  
EAC ES3832 Compact interruptible emergency AC power system  
G6A6A II Oversized trim ring with 8" outside diameter

**Notes:**  
1 Overall height varies based on lumen package; refer to dimensional chart on page 3.  
2 Not available with emergency options.  
3 Not available with emergency options.  
4 Must specify voltage 120V or 277V.  
5 Available with clear (AI) reflector only.  
6 1/2" of plenum depth or top access required for battery pack maintenance.  
7 Specify voltage, ER for use with generator supply EM power. Will require an emergency hot lead and normal hot lead.  
8 Fixture begins at 80% light level. Must be specified with high-SM2 or SP500Z/ER. Only available with L20 and E21 drivers.

### Accessories

Default configuration with no sensors/controls.  
Power Packages: P1, P2, P3, P4, P5

Small Window (SW) configuration.  
Power Packages: P1SW, P2SW, P3SW

Configuration with sensors/controls.  
Power Packages: P1SW, P2SW, P3SW

### Performance Data

#### Lumen Output

Lumen values are from photometric tests performed in accordance with IESNA LM-79-08. Data is considered to be representative of the configurations shown, within the tolerances allowed by Lighting Facts. Contact factory for performance data on any configurations not shown here.

Performance Package	System Watts	Max. Type	10000h, 0-10V	10000h, 0-10V	10000h, 0-10V	10000h, 0-10V	10000h, 0-10V	10000h, 0-10V	10000h, 0-10V	10000h, 0-10V	
P1 / P1SW	10W	VF	1,166	119	0	0	0	1,209	123	0	0
		VW	1,197	122	0	0	0	1,241	126	0	0
P2 / P2SW	15W	VF	1,878	129	1	0	0	1,947	134	1	0
		VW	1,927	133	1	0	0	1,997	137	1	0
P3 / P3SW	23W	VF	2,908	129	1	0	0	3,015	134	1	0
		VW	2,983	132	1	0	0	3,093	137	1	0
P4	35W	VF	4,096	117	1	0	1	4,247	121	1	0
		VW	4,202	120	1	0	1	4,357	125	1	0
P5	48W	VF	5,567	115	1	0	1	5,772	119	1	0
		VW	5,711	118	1	0	1	5,921	122	1	0

#### Electrical Load

Performance Package	System Watts	10000h, 0-10V	10000h, 0-10V	10000h, 0-10V	10000h, 0-10V	10000h, 0-10V
P1 / P1SW	10W	0.082	0.049	0.043	0.038	—
		—	—	—	—	0.046
P2 / P2SW	15W	0.132	0.081	0.072	0.064	—
		—	—	—	—	0.056
P3 / P3SW	23W	0.195	0.114	0.100	0.088	—
		—	—	—	—	0.079
P4	35W	0.302	0.175	0.152	0.134	—
		—	—	—	—	0.115
P5	48W	0.434	0.241	0.211	0.184	—
		—	—	—	—	0.157

#### Lumen Multiplier for 90CRI

Option	Multiplier
E4WH	0.845
E10WH	0.867
E20WC	0.845
VF	1.658
VW	2.840

#### Lumen Output in Emergency Mode (4000K, 80 CRI)

Option	Multiplier
E4WH	0.646
E10WH	1.658
E20WC	2.913

#### Projected LED Lumen Maintenance

See these factors to determine relative lumen output for average ambient temperatures from 0-40°C (32-104°F).

Ambient	Lumen Multiplier
0°C	1.03
10°C	1.02
20°C	1.01
25°C	1.00
30°C	0.99
40°C	0.98

See these factors to determine relative lumen output for average ambient temperatures from 0-40°C (32-104°F).

See these factors to determine relative lumen output for average ambient temperatures from 0-40°C (32-104°F).

### LITHONIA LIGHTING

COMMERCIAL OUTDOOR      One Lithonia Way • Corryers, Georgia 30012 • Phone: 1-800-705-SERV (7378) • www.lithonia.com      WDGE2 LED Rev. 01/04/21

### FEATURES & SPECIFICATIONS

**INTENDED USE** — Typical applications include corridors, lobbies, conference rooms and private offices.  
**CONSTRUCTION** — Galvanized steel mounting/gasket frame, galvanized steel junction box with bottom-hinged access covers and spring latches. Reflectors are retained by torsion springs. Vertically adjustable mounting brackets with commercial bar hangers provide 3-3/4" total adjustment. Two combination 1/2"-3/4" and four 1/2" knockouts for straight-through conduit runs. Capacity: 8 ft in 4 wall, No. 12 AWG conductors, rated 90°C.  
**Accommodates** 12" x 24" x 24" just spacing.  
**Passive cooling** thermal management for 25°C standard; high ambient (40°C) option available. Light engine and driver are accessible from above or below ceiling.  
**Max ceiling thickness** 1-1/2".  
**OPTICS** — LEDs are binned to a 3-step 500K; 80 CRI minimum, 90 CRI optional.  
**LED light source** concealed with diffusing optical lens.  
**General illumination** lighting with 1.0 S/MH and 55° cutoff to source and source image.  
**Self-flanged** anodized reflectors in specular, semi-specular, or matte diffuse finishes. Also available in white and black painted reflectors.  
**ELECTRICAL** — Multi-volt (120-277V, 50/60Hz) 0-10V dimming drivers mounted to junction box, 10% or 1% minimum dimming level available.  
0-10V dimming feature requires two (2) additional low-voltage wires to be pulled.  
70% lumen maintenance at 60,000 hours.  
**LISTINGS** — Certified to US and Canadian safety standards. Wet location standard (covered ceiling). PFS rated, ENERGY STAR® certified product.  
**WARRANTY** — 5 year limited warranty. Complete warranty terms located at: www.acuitybrands.com/support/warranty-terms-and-conditions  
**Note:** Actual performance may differ as a result of end-user environment and application. All values are typical or design values, measured under laboratory conditions at 25°C. Specifications subject to change without notice.

**ORDERING INFORMATION**      Lead times will vary depending on options selected. Consult with your sales representative.      **Example:** LDN6 35/15 LOGAR LSS MVOLT E210

Series	Color temperature	Lumens*	Aperture/Trim Color	Finish	Voltage
LDN6	27°	2700K	85 530 lumens 30 3000 lumens	AR Clear WR <sup>1</sup> White BR <sup>2</sup> Black	MVOLT Multi-volt 120 277
	35°	3500K	10 1000 lumens 40 4000 lumens	LS Specular	347 <sup>3</sup>
	40°	4000K	15 1500 lumens 50 5000 lumens	—	—
	50°	5000K	20 2000 lumens	—	—

Driver	Options
C210	0-10V driver dims to 10%
CE1	0-10V driver dims to 1%
D10	Minimum dimming 10% driver for use with JOT
D1	Minimum dimming 1% driver for use with JOT
E210	0-10V eLED driver with smooth and flicker-free drop dimming performance down to 10%
E2	0-10V eLED driver with smooth and flicker-free drop dimming performance down to 1%
E048	eLED DALI SOLD/DRIVE
NPP50ZER	0-10V dimming for non-0-10V dimming for non-0-10V dimming drivers (G210, G21).

**Accessories:** Order as separate catalog number:  
P105SCP FAK Power Sentry battery pack, T20 compliant, field installable, 10w constant power  
EAC ES3832 Compact interruptible emergency AC power system  
G6A6A II Oversized trim ring with 8" outside diameter

**Notes:**  
1 Overall height varies based on lumen package; refer to dimensional chart on page 3.  
2 Not available with emergency options.  
3 Not available with emergency options.  
4 Must specify voltage 120V or 277V.  
5 Available with clear (AI) reflector only.  
6 1/2" of plenum depth or top access required for battery pack maintenance.  
7 Specify voltage, ER for use with generator supply EM power. Will require an emergency hot lead and normal hot lead.  
8 Fixture begins at 80% light level. Must be specified with high-SM2 or SP500Z/ER. Only available with L20 and E21 drivers.

**1** Not available with CR, SP500Z, NPSR02ER, NPP140, NPS160 or N80 options.  
**2** Not available with finishes.  
**3** Not available with emergency options.  
**4** Must specify voltage 120V or 277V.  
**5** Available with clear (AI) reflector only.  
**6** 1/2" of plenum depth or top access required for battery pack maintenance.  
**7** Specify voltage, ER for use with generator supply EM power. Will require an emergency hot lead and normal hot lead.  
**8** Fixture begins at 80% light level. Must be specified with high-SM2 or SP500Z/ER. Only available with L20 and E21 drivers.