

SFD09239

SUPERINTENDENT NOTES

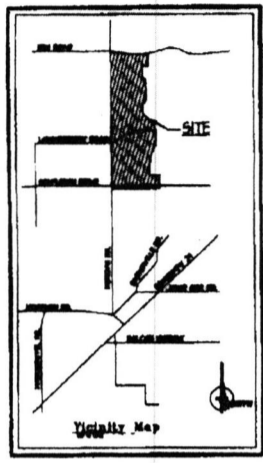
1. MANAGER SIGNATURE
2. CURB DAMAGE
3. DIG START DATE
4. DIG FINISH DATE
5. SUPERVISOR MEETING DATE
6. OPEN HOLE CALL DATE
7. FOUNDATION BRACES & MINOR WELL INSTALLATION DATE
8. SUPER INSPECTION OF BACKFILL DATE
9. GRADE OF BACKFILL

APPROVED
 BY RFH DATE 7/9/09
 FOR SFD
 NOTES

DENIED

EL PASO COUNTY
 DEVELOPMENT SERVICES

ANY APPROVAL GIVEN BY EL PASO COUNTY DOES NOT OBTAIN THE NEED TO COMPLY WITH APPLICABLE FEDERAL, STATE, OR LOCAL LAWS AND/OR REGULATIONS



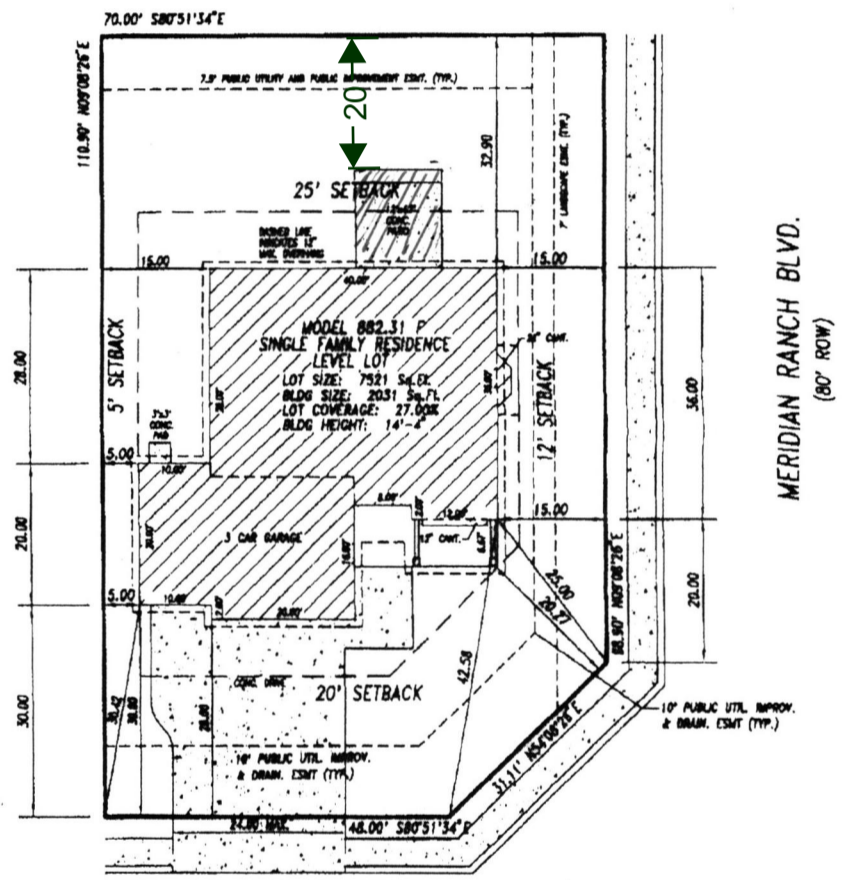
Development Services Department will not permit upon compliance with all applicable notes on the recorded plat.

An access permit must be granted by the Development Services Engineering Division prior to the establishment of any driveway onto a County Road.

Diversion of blockage of any drainageway is not permitted without the approval of the Development Services Engineering Division

PAID
163.50

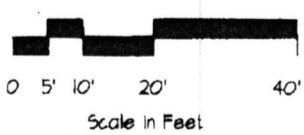
ESDOP APPROVED
 BY RFH on 7/16/09
 TRACT D



SUNSET CRATER DRIVE
 (60' ROW)



SCALE 1"=20'



575F
 Released for Permit
 JUL 02 2009
 TGC
 RBD Floodplain

#54048
 Released for Permit
 JUL 02 2009
 TGC
 RBD Enumeration

RECEIVED
 JUL 09 2009
 BY:

LEGAL DESCRIPTION
 ADDRESS: 1165 SUNSET CRATER DRIVE
 DESCRIPTION: LOT 390, PLANS 1
 MERIDIAN RANCH
 FALCON COLORADO
 EL PASO COUNTY

CLASSIC HOMES
 6385 Corporate Drive
 Colorado Springs, Colorado 80914
 (714) 542-9333

PLOT PLAN
 Drawn by: C.J.
 PUD JUNE 29, 2