

Drainage Letter

for:

LOT 6

Claremont Business Park, Filing 2
El Paso County, Colorado Springs, Colorado

Prepared for:

Hammers Construction, LLC.
1411 Woolsey Heights
Colorado Springs, CO 809151
Phone (719) 571-1599
Attn: Yury Dyachenko

Prepared by:

Galloway & Company, Inc.
1755 Telstar Drive, Suite 107
Colorado Springs, CO 80918
Phone (719) 900-7220
Attn: Todd Cartwright PE, LEED AP

Dated: July 12, 2017

Updated 9/14/17

El Paso County Project#: PPR-17-033

Galloway Project#: HCI-002

CERTIFICATION STATEMENTS

The attached drainage plan and report were prepared under my direction and supervision and are correct to the best of my knowledge and belief. Said drainage report has been prepared according to the criteria established by the County for drainage reports and said report is in conformity with the applicable master plan of the drainage basin. I accept responsibility for any liability caused by any negligent acts, errors or omissions on my part in preparing this report.

Todd Cartwright
Registered Professional Engineer
State of Colorado No. 33365



Date

09/19/2017

Developer's Statement:

I, the developer have read and will comply with all of the requirements specified in this drainage report and plan.


Hammers Construction

By: ZACK CRABTREE

Title: PM

Address: 1411 Woolsey Heights
Colorado Springs, CO 80915

CITY OF COLORADO SPRINGS:

Filed in accordance with the requirements of the Drainage Criteria Manual, Volumes 1 & 2, El Paso County Engineering Criteria Manual and Land Development Code as amended.

Jennifer Irvine, P.E.
County Engineer/ECM Administrator

Conditions:

Approved



By: **Jennifer Irvine, County Engineer**

Date: **10/24/2017**

El Paso County Department of Public Works

Hammers Construction
CBP 2, Lot 6
9/14/17

I. GENERAL LOCATION AND DRAINAGE DESIGN DESCRIPTION

A. Purpose

The purpose of this letter is to show that there shall be no negative drainage effects associated with the proposed development of Lot 6 within the Claremont Business Park Filing 2A, recorded 4/14/2010 under Reception No. 210713035 of the El Paso County Records. This final drainage letter is being submitted concurrently with the improvement construction plans proposing a light industrial building and the associated drivelines.

B. Property Description

The proposed project site is within the Northeast Quarter of Section 8, Township 14 South, Range 65 West of the 6th Principal Meridian. The site can be further described as bounded by Cole View on the north and McClain Point on the east. See Figure 1. Lot 6 consists of approximately 0.4 acres and is currently vacant. The proposed project consists of all infrastructure typically associated with light industrial development. Most the site will consist of crushed asphalt, curb, lighting, and landscaping.

C. Existing Drainage Characteristics

The site is currently vacant with a relatively new roadway infrastructure and associated utilities with slopes ranging from 0-2% from northeast to southwest. Flows from the site run in a sheet-flow manner and drain to the northwest portion of the site, and then eventually outfalls to an existing storm sewer collection system at the northwest corner of Lot 6 and ultimately discharges to the East Fork Sand Creek.

D. Floodplain Statement

According to FEMA FIRM map 08041C0756F, effective March 17, 1997, the site lies within Shaded Zone X. Shaded Zone X is identified as areas of 500-year flood; areas of 100-year flood with average depths of less than 1 foot.

E. Proposed Drainage Characteristics

Most the site will consist of asphalt, crushed asphalt, a building and, a Storm Water Quality Facility and landscaping. The subject site was previously analyzed within the Final Drainage Report (FDR) for Claremont Business Park Filing 2 prepared by Matrix Design Group approved 04/23/2007. Onsite Water Quality Control Volume (WQCV) is required but on-site storm water detention is not required per the FDR for Claremont Business Park Filling 2A.

The majority of post-developed flows including the west half of the building roof from Lot 6 shall be directed to a Storm Water Quality Facility (permeable pavement system type), which is located along the western property line along near Selix Grove. Flows enter the permeable pavement system near the western portion of the site via a surface curb and gutter (0.9 cfs for the 5-yr and 1.8 cfs for the 100-yr). See Appendix B for the hydraulic design details of the storm drain system. The Rational calculations were made knowing an existing hydraulic soil group (HSC) of type A (See Appendix C).

The remainder of lot 6 post development flows including the east half of the roof will exit the site to the north into Selix Grove (0.3 cfs for the 5-yr and 0.5 cfs for the 100-yr).

Flows that enter the permeable pavement system will infiltrate into the ground. Based on percolation test completed October 13, 2016 for an adjacent lot we anticipate a perc rate of 16-20 minutes per inch. Using the conservative 16.0 min/in for the 20 inches of permeable pavement storage the detention should drain in 3.5 hours.

F. Water Quality Provisions – Permeable Pavement Detention

The proposed permeable pavement system will be built per Urban Drainage and Flood Control recommendations (see Appendix B for additional information on the permeable pavement system). The volume provided by the permeable pavement system is approximately 228 cu-ft which exceeds the required Water Quality Control Volume of 212 cu-ft. This volume will be achieved in a 20 inch deep reservoir. The size of the permeable pavement system is based on an impervious area of 82%, a drainage area of approximately 0.25 acres, and a runoff of 0.6-inches of precipitation per *El Paso County – Drainage Criteria Manual Volume 2*. See Appendix B for Design Procedure Form for permeable pavement system.

G. The Four-Step Process

Per the City of Colorado Springs Drainage Criteria Manual - Volume 1, the four-step process was implemented for stormwater management:

Step 1: Employ Runoff Reduction Practices. Due to the small site, employing runoff reduction practices is not possible.

Step 2: Stabilize Drainageways. There are no stream channels onsite to stabilize.

Step 3: Provide Water Quality Capture Volume (WQCV). The WQCV is being provided by a Rain Garden located on the western edge of the property.

Step 4: Consider Need for Industrial and Commercial BMPs. The business use will not be producing any industrial or commercial hazards. In addition, due to the small-scale development of the site, no additional source controls are necessary.

H. Private Water Quality Facility – Cost Estimate

Private Water Quality Facility (permeable pavement system): \$6,000

I. Drainage Fees

Since the property has already been platted, no drainage fees are required to be paid.

II. CONCLUSIONS

The proposed runoff patterns for the site have no negative drainage effects within Claremont Business Park Filing 2A or the surrounding area. The methodologies and drainage criteria used in the overall

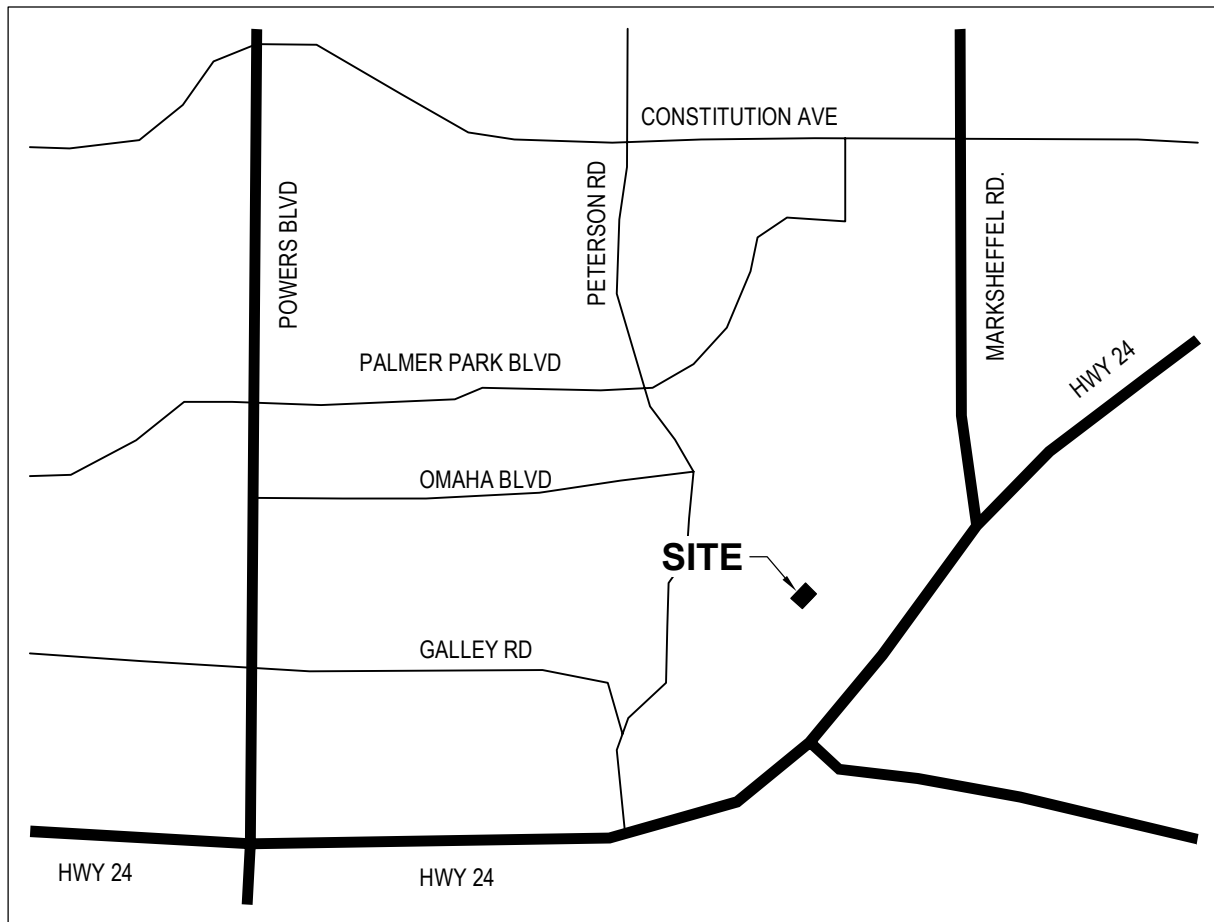
drainage design meet the current City DCM requirements.

III. REFERENCES

1. *Drainage Criteria Manual Volumes 1 & 2*, City of Colorado Springs, most recent version.
2. *Urban Storm Drainage and Criteria Manual, Urban Drainage and Flood Control District*, most recent version.
3. *Final Drainage Report for Claremont Business Park Filing No. 2, November 2006*, by the Matrix Design Group,

FIGURES

1) VICINITY MAP



VICINITY MAP
NTS



CBP F2, LOT 6
HAMMERS CONSTRUCTION

1435 Selix Grove
COLORADO SPRINGS, CO

FIGURE 1 - VICINITY MAP

Project No:	HCI 002.01
Drawn By:	TAC
Checked By:	TAC
Date:	06/28/17

Galloway
Planning. Architecture. Engineering.
Trolley Corners Building
515 South 700 East, Suite 3F
Salt Lake City, UT 84102
303.770.8884 O
www.gallowayUS.com
©2016, Galloway & Company, Inc. All Rights Reserved

APPENDIX A

2) PERMEABLE PAVEMENT SYSTEM DESIGN INFORMATION

Description

The term *Permeable Pavement System*, as used in this manual, is a general term to describe any one of several pavements that allow movement of water into the layers below the pavement surface. Depending on the design, permeable pavements can be used to promote volume reduction, provide treatment and slow release of the water quality capture volume (WQCV), and reduce effective imperviousness. Use of permeable pavements is a common Low Impact Development (LID) practice and is often used in combination with other BMPs to provide full treatment and slow release of the WQCV. A number of installations within the UDFCD

boundary have also been designed with an increased depth of aggregate material in order to provide storage for storm events in excess of the water quality (80th percentile) storm event. This requires some additional design considerations, which are discussed within this BMP Fact Sheet.



Photograph PPS-1. The reservoir layer of a permeable pavement provides storage volume for the WQCV. Photo courtesy of Muller Engineering and Jefferson County Open Space.

Site Selection

This infiltrating BMP requires consultation with a geotechnical engineer when proposed near a structure. In addition to providing the pavement design, a geotechnical engineer can assist with evaluating the suitability of soils, identifying potential impacts, and establishing minimum distances between the BMP and structures.

Permeable pavement systems provide an alternative to conventional pavement in pedestrian areas and lower-speed vehicle areas. They are not appropriate where sediment-laden runoff could clog the system (e.g., near loose material storage areas).

This BMP is not appropriate when erosive conditions such as steep slopes and/or sparse vegetation drain to the permeable pavement. The sequence of construction is also important to preserve pavement infiltration. Construction of the pavement should take place only after construction in the watershed is complete.

For sites where land uses or activities can cause infiltrating stormwater to contaminate groundwater, special design requirements are required to ensure no-infiltration from the pavement section.

Permeable Pavement	
Functions	
LID/Volume Red.	Yes
WQCV	Yes
WQCV+Flood Control	Yes
Fact Sheet Includes EURV Guidance	No
Typical Effectiveness for Targeted Pollutants ³	
Sediment/Solids	Very Good ¹
Nutrients	Good
Total Metals	Good
Bacteria	Unknown
Other Considerations	
Life-cycle Costs ⁴	High ²
¹ Not recommended for watersheds with high sediment yields (unless pretreatment is provided). ² Does not consider the life cycle cost of the conventional pavement that it replaces. ³ Based primarily on data from the International Stormwater BMP Database (www.bmpdatabase.org). ⁴ Based primarily on BMP-REALCOST available at www.udfcd.org . Analysis based on a single installation (not based on the maximum recommended watershed tributary to each BMP).	

Permeable pavements and other BMPs used for infiltration that are located adjacent to buildings, hardscape or conventional pavement areas can adversely impact those structures if protection measures are not provided. Wetting of subgrade soil underlying those structures can cause the structures to settle or result in other moisture-related problems. Wetting of potentially expansive soils or bedrock can cause those materials to swell, resulting in structure movements. In general, a geotechnical engineer should evaluate the potential impact of the BMP on adjacent structures based on an evaluation of the subgrade soil, groundwater, and bedrock conditions at the site. In addition, the following minimum requirements should be met:

- In locations where subgrade soils do not allow infiltration, the pavement section should include an underdrain system.
- Where infiltration can adversely impact adjacent structures, the filter layer should be underlain by an underdrain system designed to divert water away from the structure.
- In locations where potentially expansive soils or bedrock exist, placement of permeable pavement adjacent to structures and conventional pavement should only be considered if the BMP includes an underdrain designed to divert water away from the structure and is lined with an essentially impermeable geomembrane liner designed to restrict seepage.

Designing for Maintenance

Recommended ongoing maintenance practices for all BMPs are provided in the BMP Maintenance chapter of this manual. During design and construction, the following should be considered to ensure ease of maintenance over the long-term:

- Hold a pre-construction meeting to ensure that the contractor has an understanding of how the pavement is intended to function. Discuss the contractor's proposed sequence of construction and look for activities that may require protection of the permeable pavement system.
- Ensure that the permeable pavement is protected from construction activities following pavement construction (e.g., landscaping operations). This could include covering areas of the pavement, providing alternative construction vehicle access, and providing education to all parties working on-site.
- Include an observation well to monitor the drain time of the pavement system over time. This will assist with determining the required maintenance needs. See Figure PPS-8.

Benefits

- Permeable pavement systems provide water quality treatment in an area that serves more than one purpose. The depth of the pavement system can also be increased to provide flood control.
- Permeable pavements can be used to reduce effective imperviousness or alleviate nuisance drainage problems.
- Permeable pavements benefit tree health by providing additional air and water to nearby roots.
- Permeable pavements are less likely to form ice on the surface than conventional pavements.
- Some permeable pavements can be used to achieve LEED credits.

Limitations

- Additional design and construction steps are required for placement of any ponding or infiltration area near or upgradient from a building foundation, particularly when potentially expansive soils exist. This is discussed in the design procedure section.
- In developing or otherwise erosive watersheds, high sediment loads can clog the facility.

- Call for construction fence on the plans around pervious areas where infiltration rates need to be preserved and could be reduced by compaction from construction traffic or storage of materials.

Example Construction Drawing Notes

- Excavation of subgrade shall not commence until after the pre-construction meeting.
- Subgrade shall be excavated using low ground pressure (LGP) track equipment to minimize over compaction of the subgrade.¹
- Grading and compaction equipment used in the area of the permeable pavement should be approved by the engineer prior to use.
- Loose materials shall not be stored on the permeable pavement area.
- The contractor shall, at all times during and after system installation, prevent sediment, debris, and dirt from any source from entering the permeable pavement system.
- Placement of the wearing course shall be performed after fine grading and landscaping in adjacent areas is complete. If the wearing course becomes clogged due to construction activities, clean the surface with a vacuum machine to restore the infiltration rate after construction is complete.

¹ For partial and full infiltration sections only.

Design Procedure and Criteria

Note: This manual includes a variety of specific pavements, which are discussed and distinguished in supplemental BMP Fact Sheets T-10.1, T-10.2, etc. This BMP Fact Sheet outlines the design procedure and other design components and considerations that are common to all of the systems. Review of the supplemental Fact Sheets is recommended to determine the appropriate pavement for a specific site or use.

1. **Subsurface Exploration and Determination of a No-Infiltration, Partial Infiltration, or Full Infiltration Section:** Permeable pavements can be designed with three basic types of sections. The appropriate section will depend on land use and activities, proximity to adjacent structures and soil characteristics. Sections of each installation type are shown in Figure PPS-1.
 - **No-Infiltration Section:** This section includes an underdrain and an impermeable liner that prevents infiltration of stormwater into the subgrade soils. Consider using this section when any of the following conditions exist:
 - Land use or activities could contaminate groundwater if stormwater is allowed to infiltrate.
 - Permeable pavement is located over potentially expansive soils or bedrock that could swell due to infiltration and potentially damage the permeable pavement system or adjacent structures (e.g., building foundation or conventional pavement).

- **Partial Infiltration Section:** This section does not include an impermeable liner, and allows some infiltration. Stormwater that does not infiltrate is collected and removed by an underdrain system.
- **Full Infiltration Section:** This section is designed to infiltrate the water stored in the voids of the pavement into the subgrade below. UDFCD recommends a minimum infiltration rate of 2 times the rate needed to drain the WQCV over 12 hours.

Subsurface Exploration and Testing for all Sections: A geotechnical engineer should scope and perform a subsurface study. Typical geotechnical investigation needed to select and design the pavement system for handling anticipated traffic loads includes:

- Prior to exploration review geologic and geotechnical information to assess near-surface soil, bedrock and groundwater conditions that may be encountered and anticipated ranges of infiltration rate for those materials. For example, if the site is located in a general area of known shallow, potentially expansive bedrock, a no-infiltration section will likely be required. It is also possible that this BMP may be infeasible, even with a liner, if there is a significant potential for damage to the pavement system or adjacent structures (e.g., areas of dipping bedrock).
- Drill exploratory borings or exploratory pits to characterize subsurface conditions beneath the subgrade and develop requirements for subgrade preparation. Drill at least one boring or pit for every 40,000 ft², and at least two borings or pits for sites between 10,000 ft² and 40,000 ft². The boring or pit should extend at least 5 feet below the bottom of the base, and at least 20 feet in areas where there is a potential of encountering potentially expansive soils or bedrock. More borings or pits at various depths may be required by the geotechnical engineer in areas where soil types may change, in low-lying areas where subsurface drainage may collect, or where the water table is likely within 8 feet below the planned bottom of the base or top of subgrade. Installation of temporary monitoring wells in selected borings or pits for monitoring groundwater levels over time should be considered where shallow groundwater that could impact the pavement system area is encountered.
- Perform laboratory tests on samples obtained from the borings or pits to initially characterize the subgrade, evaluate the possible section type, and to assess subgrade conditions for supporting traffic loads. Consider the following tests: moisture content (ASTM D 2216); dry density (ASTM D 2936); Atterberg limits (ASTM D 4318); gradation (ASTM D 6913); swell-consolidation (ASTM D 4546); subgrade support testing (R-value, CBR or unconfined compressive strength); and hydraulic conductivity. A geotechnical engineer should determine the appropriate test method based on the soil type.
- For sites where a full infiltration section may be feasible, perform on-site infiltration tests using a double-ring infiltrometer (ASTM D 3385). Perform at least one test for every 160,000 ft² and at least two tests for sites between 40,000 ft² and 160,000 ft². The tests should be located near completed borings or pits so the test results and subsurface conditions encountered in the borings can be compared, and at least one test should be located near the boring or pit showing the most unfavorable infiltration condition. The test should be performed at the planned top of subgrade underlying the permeable pavement system, and that subgrade should be prepared similar to that required for support of the permeable pavement system.
- Be aware that actual infiltration rates are highly variable dependent on soil type, density and moisture content and degree of compaction as well as other environmental and construction influences. Actual rates can differ an order of magnitude or more from those indicated by

infiltration or permeability testing. Selection of the section type should be based on careful assessment of the subsurface exploration and testing data.

2. **Required Storage Volume:** Provide the WQCV based on a 12-hour drain time.

- Find the required WQCV (watershed inches of runoff). Using the effective impervious area of the watershed area, use Figure 3-2 located in Chapter 3 to determine the WQCV based on a 12-hour drain time. The maximum recommended ratio for tributary impervious area to permeable pavement area is 2.0. Higher loading is not recommended, as it may increase the required maintenance interval.
- Calculate the design volume as follows:

$$V = \left[\frac{\text{WQCV}}{12} \right] A \quad \text{Equation PPS-1}$$

Where:

A = watershed area tributary to the permeable pavement (ft^2)

V = design volume (ft^3)

- Add flood control volume if desired. When designing for flood control volumes, provide an overflow that will convey runoff in excess of the WQCV directly into the reservoir. A gravel strip or inlet that is connected to the reservoir can provide this overflow.

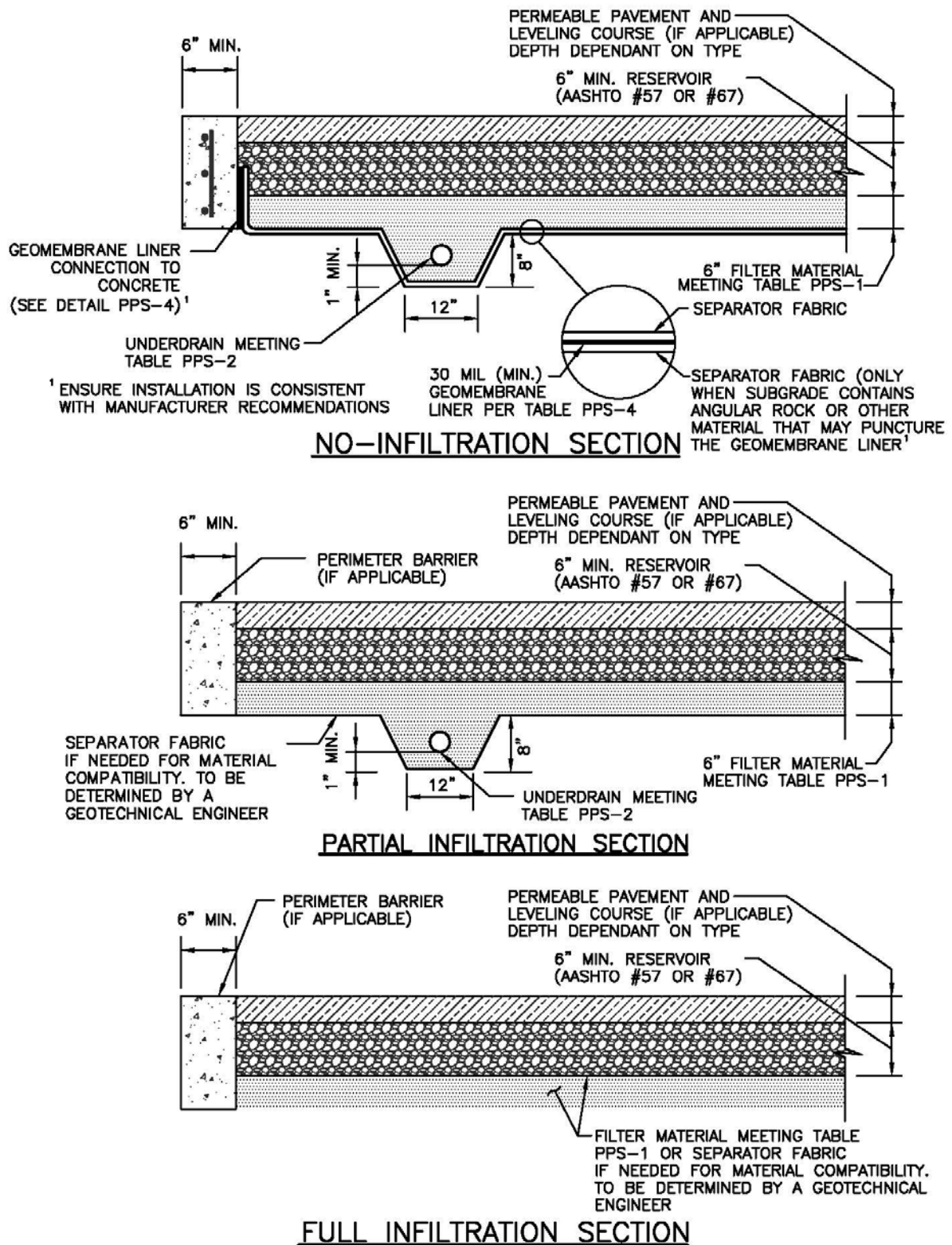


Figure PPS-1. Permeable Pavement Sections

3. **Depth of Reservoir:** The minimum recommended depth of AASHTO No. 57 or No. 67 coarse aggregate is 6 inches. Additional depth may be required to support anticipated loads or to provide additional storage, (i.e., for flood control). This material should have all fractured faces. UDFCD recommends that void storage be calculated only for the reservoir, assuming the aggregate filter layer is saturated. With the exception of porous gravel pavement, use a porosity of 40% or less for both No. 57 and No. 67 coarse aggregate. For porous gravel pavement use a porosity of 30% or less to account for reduced volume due to sediment. Porous gravel pavements typically allow greater sediment volumes to enter the pavement. See Figures PPS-2 and PPS-3 for alternative pavement profiles. Calculate available storage using equation PPS-2 for a flat subgrade installation, and PPS-3 for a sloped subgrade installation. These equations allow for one inch of freeboard. Flat installations are preferred as the design spreads infiltration evenly over the subgrade. For sloped subgrade installations, the increased storage depth located upstream of the lateral barrier (see step 7) can increase lateral movement (parallel to the flow barrier) of water into areas adjacent to the pavement section.

When used for vehicular traffic, a pavement design should be performed by a qualified engineer experienced in the design of permeable pavements and conventional asphalt and concrete pavements. The permeable pavement should be adequately supported by a properly prepared subgrade, properly compacted filter material and reservoir material.

Reservoir aggregate should have all fractured faces. Place the aggregate in 6-inch (maximum) lifts, compacting each lift by using a 10-ton, or heavier, vibrating steel drum roller. Make at least four passes with the roller, with the initial passes made while vibrating the roller and the final one to two passes without vibration.

- For flat or stepped installations (0% slope at the reservoir/subgrade interface):

$$V = P \left[\frac{D - 1}{12} \right] A \quad \text{Equation PPS-2}$$

Where:

V = volume available in the reservoir (ft³)

P = porosity, ≤0.30 for porous gravel, ≤0.4 for all other pavements
using AASHTO No. 57 or No. 67 coarse aggregate in the reservoir

D = depth of reservoir (in)

A = area of the permeable pavement (ft²)

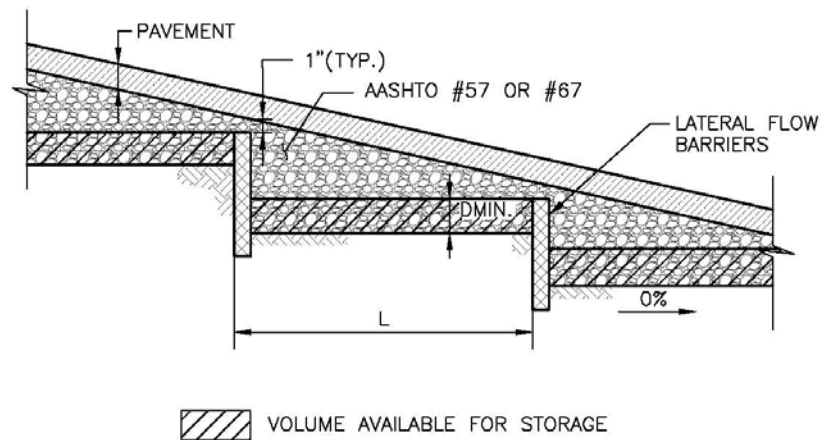


Figure PPS-2. Permeable Pavement Profile, Stepped Installation

- For sloped installations (slope of the reservoir/subgrade interface > 0%):

$$V = P \left[\frac{D - 6sL - 1}{12} \right] A \quad \text{Equation PPS-3a}$$

While:

$$L < \frac{2 \text{ WQCV}}{sAP} \quad \text{Equation PPS-3b}$$

Where:

- V = volume available in the reservoir (ft³)
- P = porosity, ≤0.30 for porous gravel, ≤0.4 for all other pavements using AASHTO No. 57 or No. 67 coarse aggregate in the reservoir
- s = slope of the reservoir/subgrade interface (ft/ft)
- D = depth of the reservoir (in)
- L = length between lateral flow barriers (see step 4) (ft)
- A = area of the permeable pavement (ft²)
- WQCV = water quality capture volume (ft³)

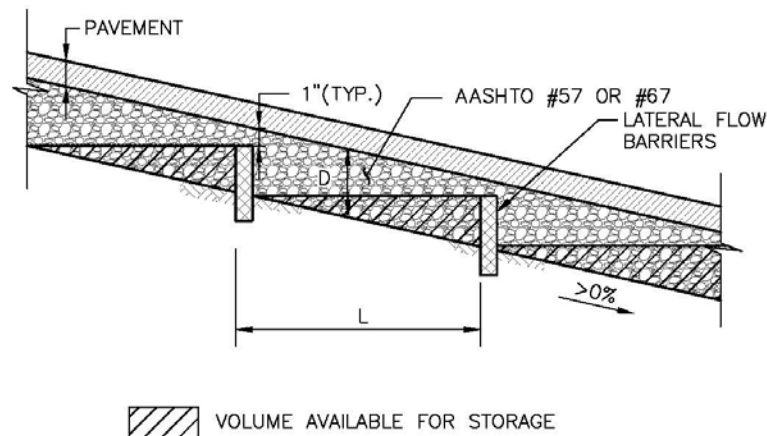


Figure PPS-3. Permeable Pavement Profile, Sloped Installation.

4. **Lateral Flow Barriers:** Construct lateral flow cutoff barriers using concrete walls or a 30 mil (minimum) PVC geomembrane. Lateral flow barriers should be placed parallel to contours (normal to flow). This will preserve the volume available for storage and ensure that stormwater will not resurface, washing out infill material. See Figure PPS-6 and Table PPS-4 when using a PVC geomembrane for this purpose. Also include a separator fabric, per Table PPS-3, between the geomembrane and all aggregate materials. Lateral flow barriers should be installed in all permeable pavement installations that have a reservoir/subgrade interface greater than 0%. Lateral flow barriers should be spaced, as necessary, to satisfy equations PPS-3a and PPS-3b. One exception is reinforced grass pavement. Infill washout is not a concern with reinforced grass pavement.
5. **Perimeter Barrier:** For all no-infiltration sections, provide a reinforced concrete barrier on all sides of the pavement system. Perimeter barriers may also be recommended for other permeable pavement installations depending on the type or use of the pavement. For PICP and concrete grid pavement, a barrier is required to restrain movement of the pavers or grids. Precast, cast-in-place concrete or cut stone barriers are required for commercial vehicular areas. For residential use and commercial pedestrian use, a metal or plastic edge spiked with 3/8-inch-diameter, 10-inch-long nails provides a less expensive alternative for edge restraint.

For all pavements, consider the section beyond the permeable pavement when evaluating the perimeter design. The perimeter barrier helps force water into the underdrain and reduces lateral flow of water. Lateral flow can negatively impact the adjacent conventional pavement section, structure, or embankment (especially when the subgrade is sloped). Also consider material separation. Consider construction of the interface between the permeable pavement and the adjacent materials and how the design will prevent adjacent materials from entering the permeable pavement section. Depending on the soils, depth of pavement, and other factors, this may be achieved with fabric or may require a more formalized barrier.

When a permeable pavement section is adjacent to conventional pavement, a vertical liner may be required to separate the reservoir of the permeable pavement system from dense-graded aggregates and soils within the conventional pavement. An impermeable liner can be used to provide this vertical barrier and separate these two pavement systems.

No-Infiltration Section: For this type of section, the perimeter barrier also serves to attach the impermeable membrane. The membrane should extend up to the top of the filter layer and be firmly

attached to the concrete perimeter barrier using batten bars to provide a leak-proof seal. A nitrile-based vinyl adhesive can be used when the need for an impermeable liner is less critical. See Figures PPS-4 and PPS-5 for installation details. For ease of construction, including the placement of geotextiles, it is suggested that the barrier extend to the bottom of the filter layer.

Partial and Full Infiltration Section: The perimeter barrier for these sections also restricts lateral flow to adjacent areas of conventional pavement or other structures where excessive moisture and/or hydrostatic pressure can cause damage. When this is of particular concern, the perimeter barrier should be extended to a depth 12 inches or more below the underdrain. Otherwise, extend the barrier to the bottom of the filter layer.

6. **Filter Material and Underdrain System:** An aggregate filter layer and underdrain are required for all partial and no-infiltration sections. Without this filter layer, the section will not provide adequate pollutant removal. This is based on research performed by UDFCD monitoring sites with and without this component. A filter or separator fabric may also be necessary under the reservoir in a full infiltration section if the subgrade is not filter compatible with the reservoir material such that finer subgrade soils could enter into the voids of the reservoir.

In previous versions of the USDCM, UDFCD recommended that the underdrain be placed in an aggregate drainage layer and that a geotextile separator fabric be placed between this drainage and the filter layer. This version of the USDCM replaces that fabric, which could more easily plug or be damaged during construction, with aggregate filter material that is filter-compatible with the reservoir, and a drainpipe with perforations that are filter-compatible with the filter material. This eliminates the need for a separator fabric between the reservoir and the underdrain layer. The filter material provided below should only be used with the underdrain pipe specified within this section.

The underdrain should be placed below a 6-inch-thick layer of CDOT Class C filter material meeting the gradation in Table PPS-1. Extend the filter material around and below the underdrain as shown in Figure PPS-1.

Provide clean-outs to allow inspection (by camera) of the drainpipe system during and after construction to ensure that the pipe was not crushed or disconnected during construction and to allow for maintenance of the underdrain.

Use of Class C Filter material with a slotted PVC pipe that meets the slot dimensions provided in Table PPS-2 will eliminate the need for an aggregate layer wrapped geotextile fabric.

Design Opportunity

Pollutant removal occurs in the filter material layer of the section. The basic permeable pavement section may be considered with other wearing courses to provide water quality as long as:

- the filter layer is included in the section,
- the wearing course provides adequate permeability, and
- the new section does not introduce new pollutants to the runoff.

Table PPS-1. Gradation Specifications for Class C Filter Material (Source: CDOT Table 703-7)

Sieve Size	Mass Percent Passing Square Mesh Sieves
19.0 mm (3/4")	100
4.75 mm (No. 4)	60 – 100
300 µm (No. 50)	10 – 30
150 µm (No. 100)	0 – 10
75 µm (No. 200)	0 - 3

Table PPS-2. Dimensions for Slotted Pipe

Pipe Diameter	Slot Length ¹	Maximum Slot Width	Slot Centers ¹	Open Area ¹ (per foot)
4"	1-1/16"	0.032"	0.413"	1.90 in ²
6"	1-3/8"	0.032"	0.516"	1.98 in ²

¹ Some variation in these values is acceptable and is expected from various pipe manufacturers. Be aware that both increased slot length and decreased slot centers will be beneficial to hydraulics but detrimental to the structure of the pipe.

Compact the filter layer using a vibratory drum roller or plate. The top of each layer below the leveling course must be uniform and should not deviate more than a ½ inch when a 10-foot straight edge is laid on its surface. The top of the leveling course should not deviate more than 3/8 inch in 10 feet.

- Impermeable Geomembrane Liner and Geotextile Separator Fabric:** For no-infiltration sections, install a 30 mil (minimum) PVC geomembrane liner, per Table PPS-4, on the bottom and sides of the basin, extending up at least to the top of the filter layer. Provide at least 9 inches (12 inches if possible) of cover over the membrane where it is attached to the wall to protect the membrane from UV deterioration. The geomembrane should be field-seamed using a dual track welder, which allows for non-destructive testing of almost all field seams. A small amount of single track and/or adhesive seaming should be allowed in limited areas to seam around pipe perforations, to patch seams removed for destructive seam testing, and for limited repairs. The liner should be installed with slack to prevent tearing due to backfill, compaction, and settling. Place CDOT Class B geotextile separator fabric, per Table PPS-3, above the geomembrane to protect it from being punctured during the placement of the filter material above the liner. If the subgrade contains angular rocks or other material that could puncture the geomembrane, smooth-roll the surface to create a suitable surface. If smooth-rolling the surface does not provide a suitable surface, also place the separator fabric between the geomembrane and the underlying subgrade. This should only be done when necessary because fabric placed under the geomembrane can increase seepage losses through pinholes or other geomembrane defects. Connect the geomembrane to perimeter concrete walls around the basin perimeter, creating a watertight seal between the geomembrane and the walls using a continuous batten bar and anchor connection (see Figure PPS-5). Where the need for the impermeable

membrane is not as critical, the membrane can be attached with a nitrile-based vinyl adhesive. Use watertight PVC boots for underdrain pipe penetrations through the liner (see Figure PPS-4).

Table PPS-3. Physical Requirements for Separator Fabric¹

Property	Class B		Test Method
	Elongation < 50% ²	Elongation > 50% ²	
Grab Strength, N (lbs)	800 (180)	510 (115)	ASTM D 4632
Puncture Resistance, N (lbs)	310 (70)	180 (40)	ASTM D 4833
Trapezoidal Tear Strength, N (lbs)	310 (70)	180 (40)	ASTM D 4533
Apparent Opening Size, mm (US Sieve Size)	AOS < 0.3mm (US Sieve Size No. 50)		ASTM D 4751
Permittivity, sec ⁻¹	0.02 default value, must also be greater than that of soil		ASTM D 4491
Permeability, cm/sec	k fabric > k soil for all classes		ASTM D 4491
Ultraviolet Degradation at 500 hours	50% strength retained for all classes		ASTM D 4355

¹ Strength values are in the weaker principle direction

² As measured in accordance with ASTM D 4632

Table PPS-4. Physical Requirements for Geomembrane

Property	Thickness 0.76 mm (30 mil)	Test Method
Thickness, % Tolerance	±5	ASTM D 1593
Tensile Strength, kN/m (lbs/in) width	12.25 (70)	ASTM D 882, Method B
Modulus at 100% Elongation, kN/m (lbs/in)	5.25 (30)	ASTM D 882, Method B
Ultimate Elongation, %	350	ASTM D 882, Method A
Tear Resistance, N (lbs)	38 (8.5)	ASTM D 1004
Low Temperature Impact, °C (°F)	-29 (-20)	ASTM D 1790
Volatile loss, % max.	0.7	ASTM D 1203, Method A
Pinholes, No. Per 8 m ² (No. per 10 sq. yds.) max.	1	N/A
Bonded Seam Strength, % of tensile strength	80	N/A

8. **Outlet:** The portion of the WQCV in each cell should be slowly released to drain in approximately 12 hours. An orifice at the outlet of the underdrain can be used for each cell to provide detention and slow release of the WQCV to offset hydromodification. Use a minimum orifice size of 3/8 inch to avoid clogging. If lateral walls are required, each cell should be considered a separate system and be

controlled independently. See Figure PPS-6 for underdrain system layout and outlet details showing a multi-cell configuration. Equations PPS-4 and PPS-5 can be used to determine the depth of the WQCV within the pavement section (based either on the stepped/flat installation shown in Figure PPS-2 or the sloped installation shown in Figure PPS-3) and Equation PPS-6 can be used to size the WQCV orifice. If the design includes multiple cells, these calculations should be performed for each cell substituting WQCV and V_{Total} with the volumes provided in each cell. The UD-BMP workbook available at www.udfcd.org can be used when multiple cells are similar in area. The workbook assumes that the WQCV is distributed evenly between each cell.

For calculating depth of the WQCV using a flat/stepped installation, see Figure PPS-2:

$$d = \frac{12 \text{ WQCV}}{PA} \quad \text{Equation PPS-4}$$

Where:

d = depth of WQCV storage in the reservoir (in)

P = porosity, ≤ 0.30 for porous gravel, ≤ 0.4 for all other pavements using AASHTO No. 57 or No. 67 coarse aggregate in the reservoir

A = area of permeable pavement system (ft^2)

WQCV = water quality capture volume (ft^3)

For calculating depth of the WQCV using a sloped installation, see Figure PPS-3:

$$d = 6 \left[\frac{2 \text{ WQCV}}{PA} \right] + sL \quad \text{Equation PPS-5}$$

Where:

d = depth of WQCV storage in the reservoir (in)

A = area of permeable pavement system (ft^2)

s = slope of the reservoir/subgrade interface (ft/ft)

L = length between lateral flow barriers (see step 4) (ft)

For calculating the diameter of the orifice for a 12-hour drain time (Use a minimum orifice size of 3/8 inch to avoid clogging.):

$$D_{12 \text{ hour drain time}} = \sqrt{\frac{V}{1414 y^{0.41}}} \quad \text{Equation PPS-6}$$

Where:

D = diameter of the orifice to drain a volume in 12 hours (in)

Y = distance from the lowest elevation of the storage volume (i.e. the bottom of the reservoir) to the center of the orifice (ft)

V = volume (WQCV or the portion of the WQCV in the cell) to drain in 12 hours (ft³)

Additional Design Considerations

Subgrade Preparation

Partial Infiltration and Full Infiltration Installations: The subgrade should be stripped of topsoil or other organics and either excavated or filled to the final subgrade level. Unnecessary compaction or over-compaction will reduce the subgrade infiltration rate. However, a soft or loosely compacted subgrade will settle, adversely impacting the performance of the entire permeable pavement system. The following recommendations for subgrade preparation are intended to strike a balance between those competing objectives:

- For sites, or portions thereof, requiring excavation to the final subgrade level, compaction of the subgrade may not be needed, provided that loose materials are removed from the excavation, and a firm subgrade is provided for the support of the pavement system. A geotechnical engineer should observe the prepared subgrade. Local soft areas should be excavated and replaced with properly compacted fill. As an alternative to excavating and replacing material, stabilization consisting of geogrid and compacted granular fill material can be used to bridge over the soft area. Fill material should be free draining and have a hydraulic conductivity significantly higher than the subgrade soil. Fill is typically compacted to a level equivalent to 95% Standard Proctor compaction (ASTM D 698). The designer should specify the level of compaction required to support the pavement system.
- For sites (or portions thereof), requiring placement of fill above the existing subgrade to reach the final subgrade level, the fill should be properly compacted. Specify the hydraulic conductivity for the material that is to be placed. This should be at least one order of magnitude higher than the native material. If the type or level of compaction of fill material available for construction is different than that considered in design, additional testing should be performed to substantiate that the design infiltration rate can be met. However, additional infiltrometer testing may not be necessary, provided that it can be demonstrated by other means that the compacted fill material is more permeable than that considered for design.
- Low ground pressure (LGP) track equipment should be used within the pavement area to limit over-compacting the subgrade. Wheel loads should not be allowed.

No-Infiltration Sections: Unless otherwise indicated by the geotechnical engineer, the subgrade for this section should be scarified and properly compacted to support the liner and pavement system. A level of compaction equivalent to 95% of the Standard Proctor density (ASTM D 698) is typically used. The designer should specify the level of compaction. No-infiltration sections should be smooth rolled with a roller compactor, and the prepared subgrade surface should be free of sharp objects that could puncture the liner. Both the designer and the liner installer should inspect the subgrade for acceptance prior to liner placement.

Filter and Reservoir Layer Compaction

Filter material placed above the prepared subgrade should be compacted to a relative density between 70% and 75% (ASTM D4253 and ASTM D4254) using a walk-behind vibratory roller, vibratory plate compactor or other light compaction equipment. Do not over-compact; this will limit unnecessary infiltration into the underlying subgrade. The reservoir layer may not be testable for compaction using a method based on specified density (e.g., nuclear density testing). The designer should consider a method specification (e.g., number of passes of a specified vibratory compactor) for those materials. The number of passes appropriate is dependent on the type of equipment and depth of the layer.

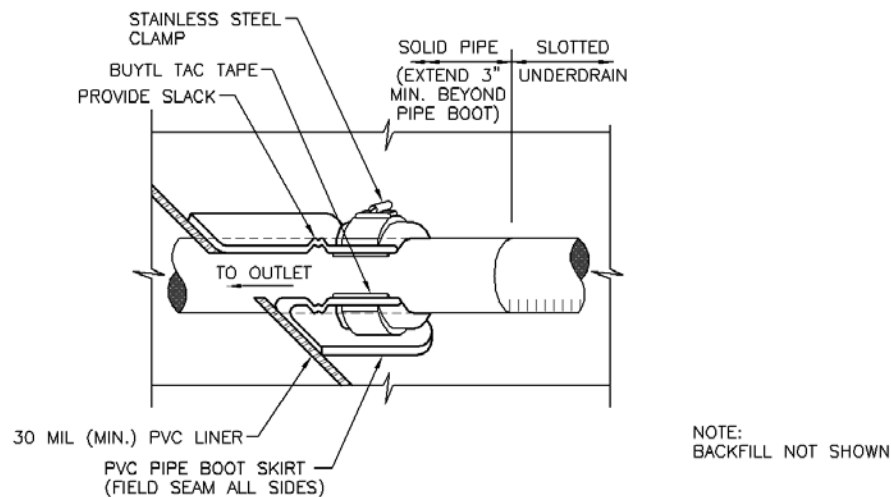


Figure PPS-4. Geomembrane Liner/Underdrain Penetration Detail

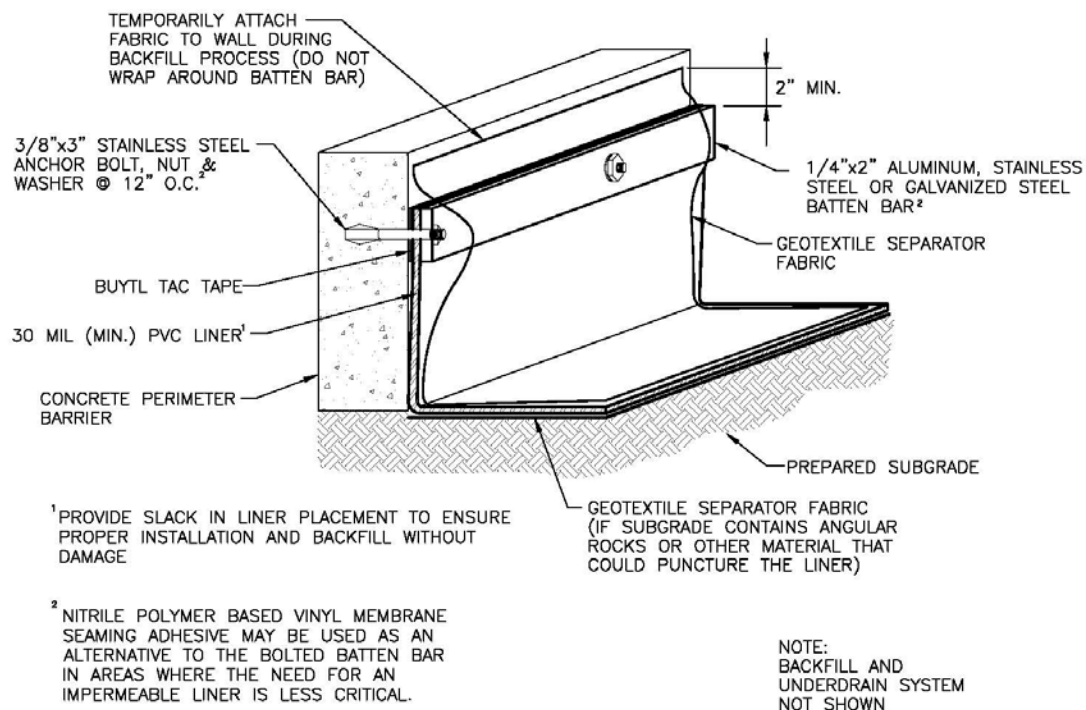


Figure PPS-5. Geomembrane Liner/Concrete Connection Detail

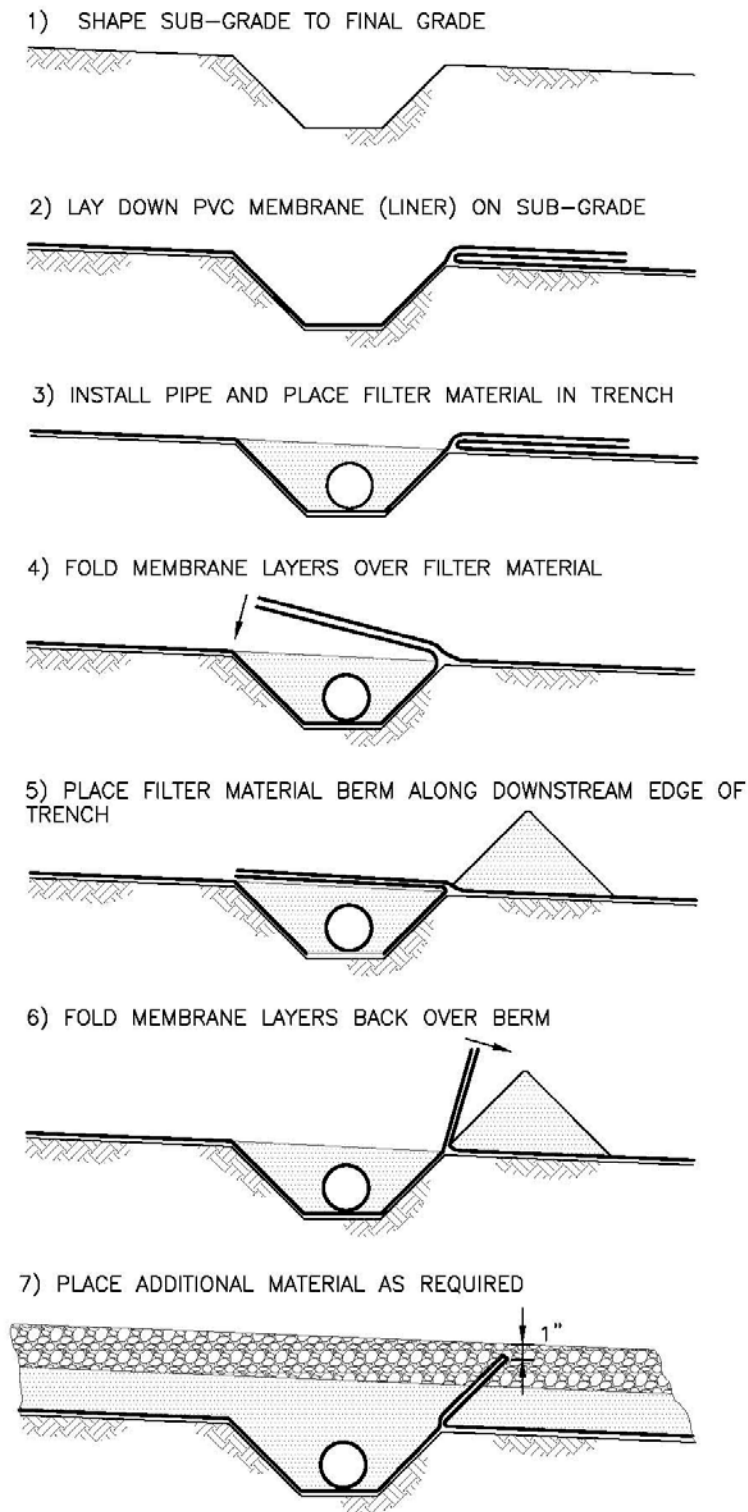
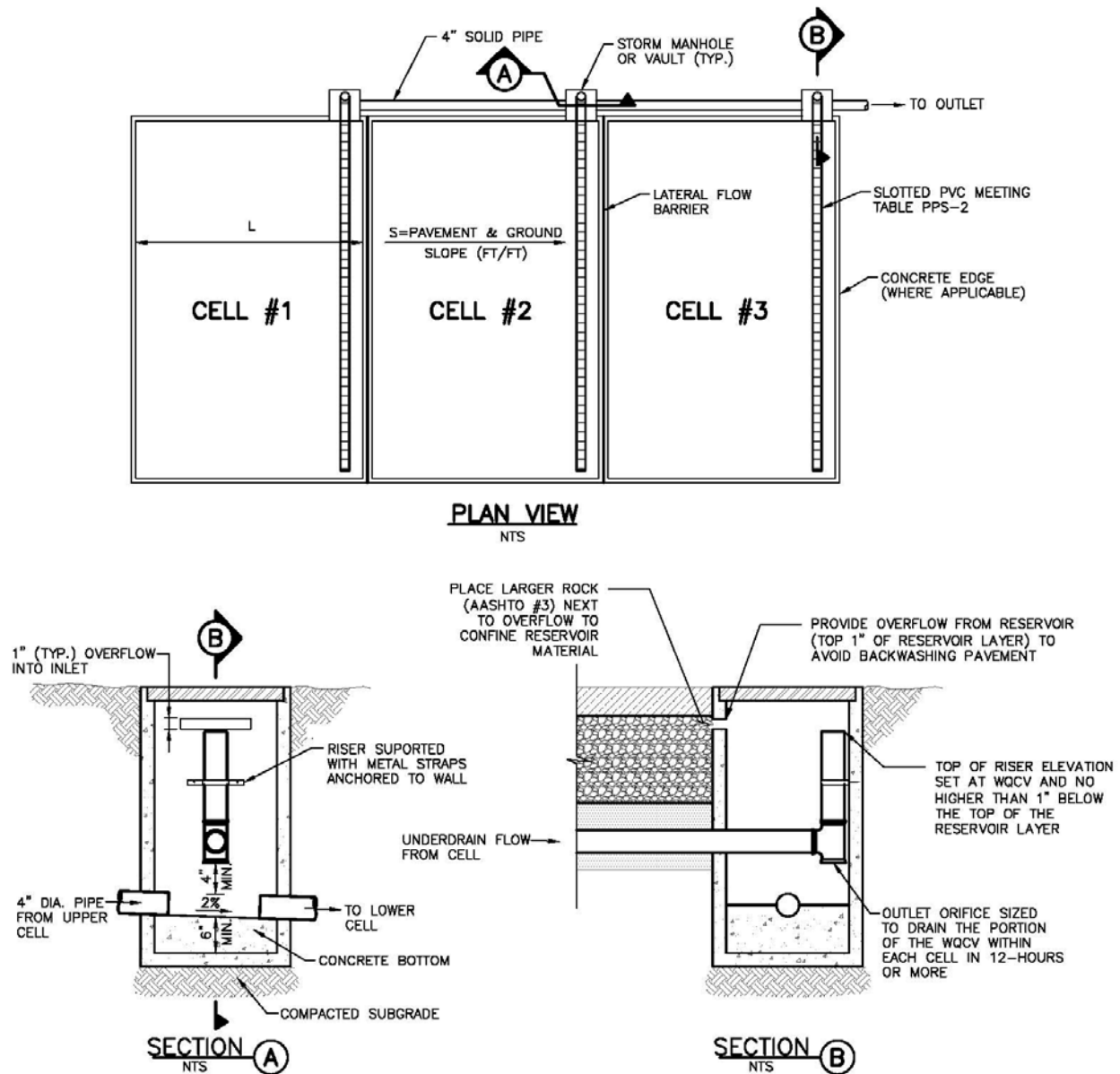
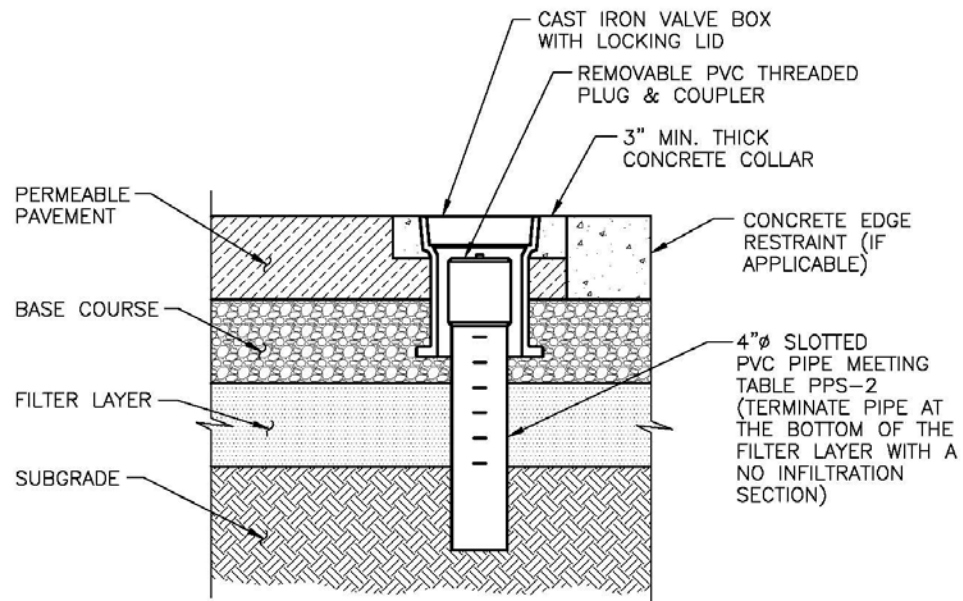
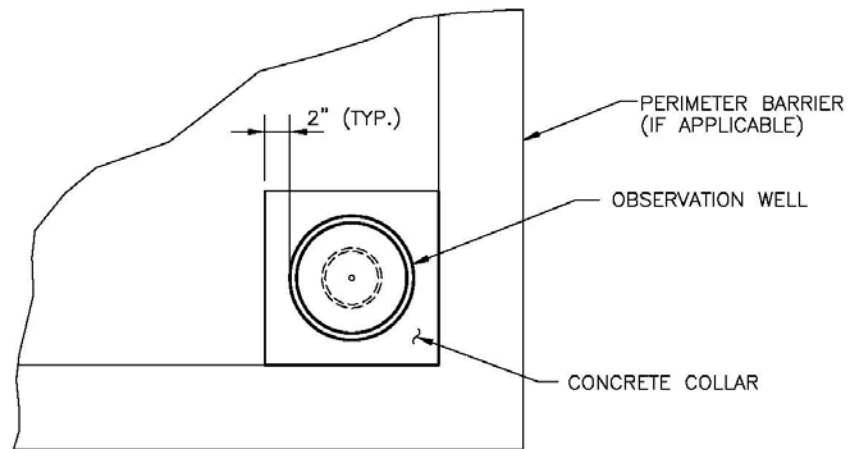


Figure PPS-6. Lateral Barrier Installation





SECTION



PLAN

Figure PPS-8. Observation Well

Construction Considerations

Proper construction of permeable pavement systems requires measures to preserve natural infiltration rates (for full and partial infiltration sections) prior to placement of the pavement, as well as measures to protect the system from the time that pavement construction is complete to the end of site construction. Supplemental Fact Sheets on the specific pavements provide additional construction considerations. The following recommendations apply to all permeable pavement systems:

- When using an impermeable liner, ensure enough slack in the liner to allow for backfill, compaction, and settling without tearing the liner.
- Provide necessary quality assurance and quality control (QA/QC) when constructing an impermeable geomembrane liner system, including, but not limited to fabrication testing, destructive and non-destructive testing of field seams, observation of geomembrane material for tears or other defects, and air lace testing for leaks in all field seams and penetrations. QA/QC should be overseen by a professional engineer. Consider requiring field reports or other documentation from the engineer.
- Keep mud and sediment-laden runoff away from the pavement area.
- Temporarily divert runoff or install sediment control measures as necessary to reduce the amount of sediment run-on to the pavement.
- Cover surfaces with a heavy impermeable membrane when construction activities threaten to deposit sediment onto the pavement area.

Design Example

The *UD-BMP* workbook, designed as a tool for both designer and reviewing agency is available at www.udfcd.org. This section provides a completed design form from this workbook as an example.

APPENDIX B

HYDRAULIC CALCULATIONS:

- 3) RATIONAL CALCULATIONS – PROPOSED CONDITION**
- 4) DESIGN PROCEDURE FOR PERMEABLE PAVEMENT SYSTEM**

Hammers Construction - Lot 6

Project# HCI002

Area Runoff Coefficient Summary - PROPOSED

BASIN	TOTAL AREA		DEVELOPED			UNDEVELOPED			WEIGHTED	
	(SF)	(Acres)	AREA (Acres)	C ₅	C ₁₀₀	AREA (Acres)	C ₅	C ₁₀₀	C ₅	C ₁₀₀
A		0.25	0.20	0.90	0.96	0.05	0.15	0.20	0.75	0.81
B		0.10	0.05	0.90	0.96	0.05	0.15	0.20	0.53	0.58

Total = 0.35

Calculated by: _____
 Date: _____
 Checked by: _____

Hammers Construction - Lot 6

Project# HCI002

Area Drainage Summary - PROPOSED

		WEIGHTED		OVERLAND			STREET / CHANNEL FLOW					T _i		CA		INTENSITY		TOTAL FLOW		
BASIN	AREA TOTAL (Acres)	C ₅	C ₁₀₀	C ₅	Length (ft)	Height (ft)	T _C (min)	Grass/ Paved	Length (ft)	Slope (%)	Velocity (fps)	T _i (min)	TOTAL (min)	CA ₅	CA ₁₀₀	I ₅ (in/hr)	I ₁₀₀ (in/hr)	Q ₅ (c.f.s.)	Q ₁₀₀ (c.f.s.)	
		* For Guts See Runoff Summary																		
A	0.25	0.75	0.81	0.75	10	1	1.0 0.0 0.0	Paved	75	0.5%	1.4	0.9 0.0 0.0	5.0 MIN 5 USE	0.19	0.20	5.0 9.1	0.9	1.8		
B	0.10	0.53	0.58	0.53	10	1	2.0 0.0 0.0	Grass	50	0.5%	1.3	0.7 0.0 0.0	5.0 MIN 5 USE	0.05	0.06	5.0 9.1	0.3	0.5		

Calculated by: _____
 Date: _____
 Checked by: _____

Design Procedure Form: Permeable Pavement Systems (PPS)

UD-BMP (Version 3.06, November 2016)

Sheet 1 of 2

Designer: TAC
 Company: Galloway
 Date: June 1, 2017
 Project: HCI002 - 1435 Selix lot 6
 Location: 1435 Selix, Colorado Springs, El Paso County, CO

<p>1. Type of Permeable Pavement Section</p> <p>A) What type of section of permeable pavement is used? (Based on the land use and activities, proximity to adjacent structures and soil characteristics.)</p> <p>B) What type of wearing course?</p>	<p>Choose One</p> <p><input type="radio"/> No Infiltration</p> <p><input type="radio"/> Partial Infiltration Section</p> <p><input checked="" type="radio"/> Full Infiltration Section</p> <p>Choose One</p> <p><input checked="" type="radio"/> PICIP</p> <p><input type="radio"/> Concrete Grid Pavement</p> <p><input type="radio"/> Pervious Concrete</p> <p><input type="radio"/> Porous Gravel</p>
<p>2. Required Storage Volume</p> <p>A) Effective Imperviousness of Area Tributary to Permeable Pavement, I_a</p> <p>B) Tributary Area's Imperviousness Ratio ($I = I_a / 100$)</p> <p>C) Tributary Watershed Area (including area of permeable pavement system)</p> <p>D) Area of Permeable Pavement System (Minimum recommended permeable pavement area = 2704 sq ft)</p> <p>E) Impervious Tributary Ratio (Contributing Impervious Area / Permeable Pavement Ratio)</p> <p>F) Water Quality Capture Volume (WQCV) Based on 12-hour Drain Time (WQCV = $(0.8 * (0.91 * I^3 - 1.19 * I^2 + 0.78 * I) / 12) * \text{Area}$)</p> <p>G) Is flood control volume being added?</p> <p>H) Total Volume Needed</p>	<p>$I_a = 82.0 \%$</p> <p>$i = 0.820$</p> <p>$A_{\text{Total}} = 9,300 \text{ sq ft}$</p> <p>$A_{\text{PPS}} = 480 \text{ sq ft}$</p> <p>$R_T = 15.1$</p> <p>WQCV = 212 cu ft</p> <p>IMPERVIOUS TRIBUTARY RATIO EXCEEDS 2.0</p> <p>Choose One</p> <p><input type="radio"/> YES</p> <p><input checked="" type="radio"/> NO</p> <p>$V_{\text{Total}} = \text{ } \text{cu ft}$</p>
<p>3. Depth of Reservoir</p> <p>A) Minimum Depth of Reservoir (Minimum recommended depth is 6 inches)</p> <p>B) Is the slope of the reservoir/subgrade interface equal to 0%?</p> <p>C) Porosity (Porous Gravel Pavement ≤ 0.3, Others ≤ 0.40)</p> <p>D) Slope of the Base Course/Subgrade Interface</p> <p>E) Length Between Lateral Flow Barriers</p> <p>F) Volume Provided Based on Depth of Base Course Flat or Stepped: $V = P * ((D_{\text{min}} - 1) / 12) * \text{Area}$ Sloped: $V = P * ((D_{\text{min}} - 6 * \text{SL} - 1) / 12) * \text{Area}$</p>	<p>$D_{\text{min}} = 20.0 \text{ inches}$</p> <p>Choose One</p> <p><input checked="" type="radio"/> YES- Flat or Stepped Installation</p> <p><input type="radio"/> NO- Sloped Installation</p> <p>$P = 0.30$</p> <p>$S = \text{ } \text{ft / ft}$</p> <p>$L = \text{ } \text{ft}$</p> <p>$V = 228 \text{ cu ft}$</p>
<p>4. Lateral Flow Barriers</p> <p>A) Type of Lateral Flow Barriers</p> <p>B) Number of Permeable Pavement Cells</p>	<p>Choose One</p> <p><input type="radio"/> Concrete Walls</p> <p><input type="radio"/> PVC geomembrane installed normal to flow</p> <p><input checked="" type="radio"/> N/A- Flat installation</p> <p><input type="radio"/> Other (Describe):</p> <p>Cells =</p>
<p>5. Perimeter Barrier</p> <p>A) Is a perimeter barrier provided on all sides of the pavement system? (Recommended for PICIP, concrete grid pavement, or for any no-infiltration section.)</p>	<p>Choose One</p> <p><input type="radio"/> YES</p> <p><input checked="" type="radio"/> NO</p>

Design Procedure Form: Permeable Pavement Systems (PPS)

Sheet 2 of 2

Designer: TAC
Company: Galloway
Date: June 1, 2017
Project: HCI002 - 1435 Selix lot 6
Location: 1435 Selix, Colorado Springs, El Paso County, CO

6. Filter Material and Underdrain System

A) Is the underdrain placed below a 6-inch thick layer of CDOT Class C filter material?

Choose One
☐ YES
☐ NO
☒ N/A

B) Diameter of Slotted Pipe (slot dimensions per Table PPs-2)

Choose One
☐ 4-inch
☐ 6-inch

C) Distance from the Lowest Elevation of the Storage Volume (i.e. the bottom of the base course to the center of the orifice)

y = _____ ft

7. Impermeable Geomembrane Liner and Geotextile Separator Fabric

A) Is there a minimum 30 mil thick impermeable PVC geomembrane liner on the bottom and sides of the basin, extending up to the top of the base course?

Choose One
☐ YES
☒ NO

B) CDOT Class B Separator Fabric

Choose One
☐ Placed above the liner
☐ Placed above and below the liner

8. Outlet

(Assumes each cell has similar area, subgrade slope, and length between lateral barriers (unless subgrade is flat). Calculate cells individually where this varies.)

A) Depth of WQCV in the Reservoir (Elevation of the Flood Control Outlet)

D_{WQCV} = _____ inches

B) Diameter of Orifice for 12-hour Drain Time (Use a minimum orifice diameter of 3/8-inches)

D_{Orifice} = _____ inches

Notes:



6825 Silver Ponds Heights #101
Colorado Springs, CO 80908
(719) 481-4560

PERCOLATION TEST

FOR

HAMMERS CONSTRUCTION

JOB #16-0787

Lot 11, Filing 2,
Claremont Business Park Subdivision,
7176 Cole View,
El Paso County,
Colorado

Respectfully submitted,

Charles E. Milligan, P.E.
Civil Engineer



PERCOLATION TEST FINDINGS

Enclosed are the results of the percolation test for the retention pond to be installed at **Lot 11, Filing 2, Claremont Business Park Subdivision, 7176 Cole View, El Paso County, Colorado**. The locations of the percolation test borings were determined by Hammers Construction. The commercial structure will not be on a public water system. Due to the natural slope of the property, the entire system will feed to the west to northwest at 2% approximately 50 feet. All applicable regulations of the El Paso County Health Department ISDS Regulations must be complied with for the installation of the disposal system.

The percolation test was performed on October 6, 2016, in accordance with **E.P.C.P.H. OWS Regulations**. The field data and results of the percolation test are as follows:

PERC. TEST @ TIME	PERC HOLE #1 @ 34" DEPTH DROP (IN INCHES)	PERC HOLE #2 @ 34" DEPTH DROP (IN INCHES)	PERC HOLE #3 @ 34" DEPTH DROP (IN INCHES)
12:24	1-3/4	4-1/4	2
12:34	3/4	1-7/8	5/8
12:44	3/4	1	5/8
12:54	11/16	13/16	9/16
1:04	5/8	5/8	9/16
1:14	5/8	5/8	1/2
Rate/Hole	16.0	16.0	20.0

The average of the test holes is 17.3 minutes per inch.

Blow counts at the depth of 3 feet was 31/12.

The soil profile for the disposal system is as follows:

- 0 to 6" - Sand- fine to coarse grain, high density, low moisture content, low cohesion, low plasticity, brown in color.
- 6" to 8' - Sand- fine to coarse grain, moderate density, moderate moisture content, low clay content, low cohesion, low plasticity, brown in color.

No water was encountered during the drilling of all holes. Bedrock was not encountered during the drilling of the test borings. No known wells were observed within 100 feet of the proposed system. **All setbacks shall conform to county regulations.**

If during construction of the field itself, subsurface conditions change considerably or if the location of the proposed field changes, this office shall be notified to determine whether the conditions are adequate for the system as designed or whether a new system needs to be designed.

Weather conditions at the time of the test consisted of partly cloudy skies with cold temperatures.



DRILL LOGS

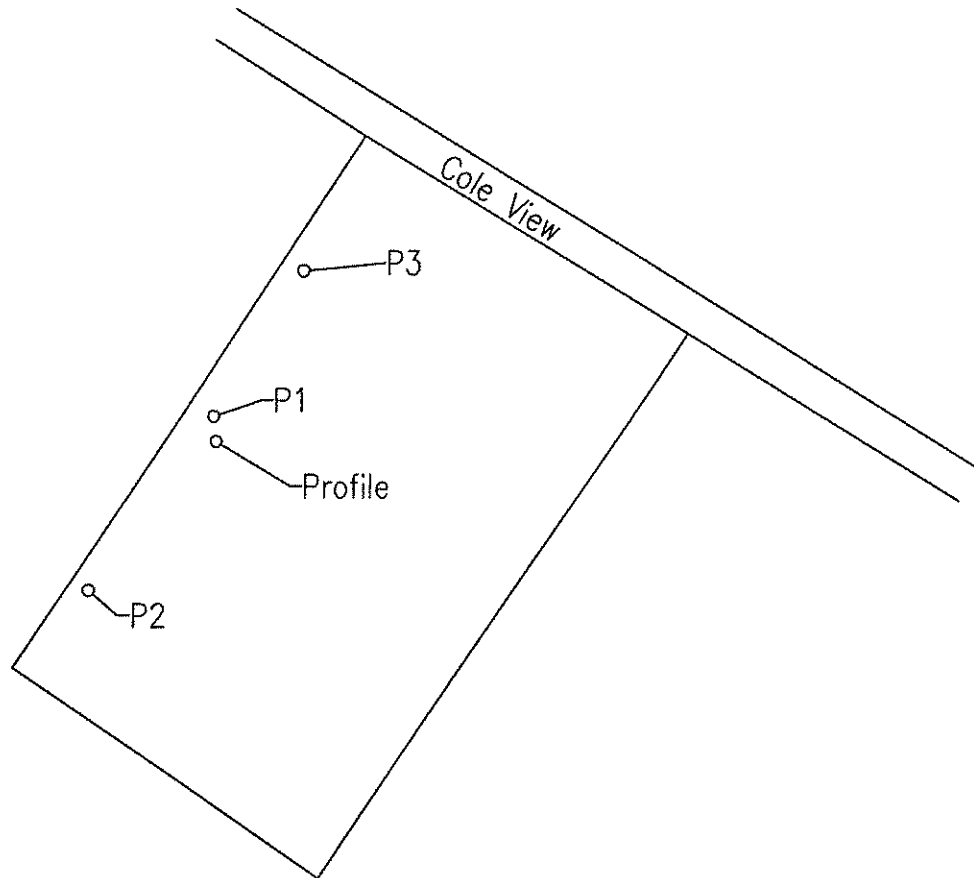
JOB #: 16-0787	DEPTH (in ft.)	SYMBOL	SAMPLES	BLOW COUNT	WATER %	SOIL TYPE
TEST BORING NO.: TH-1						
DATE: 10/6/2016						
0"-6' Sand (SM)						
Fine-coarse grained	1					
Moderate-high density	2					
Moderate moisture content	3					
Low-moderate clay content	4					
Low plasticity	5					
Light Brown color	6					
	7			31 12"	7.0	SM
6'- 8' Sand (SC)	8					
Fine-coarse grained	9					
Moderate-high density	10					
Moderate-high moisture content						
Low-moderate clay content						
Low-moderate plasticity						
Greyish Brown color						
				Bag 2"	11.2	SC

JOB #:	DEPTH (in ft.)	SYMBOL	SAMPLES	BLOW COUNT	WATER %	SOIL TYPE
TEST BORING NO.: TH-						
DATE:						
	1					
	2					
	3					
	4					
	5					
	6					
	7					
	8					
	9					
	10					

GEOQUEST LLC

SITE MAP

Lot 11, Filing 2
Claremont Business Park
7176 Cole View
El Paso County,
Colorado
Job #16-0787



Location from Southwest Lot Corner to Profile:

N. 41° E. - 78'

Location from Profile to:

P1: S. 78° E. - 3'

P2: S. 32° W. - 54'

P3: N. 35° E. - 45'

GPS coordinates:

N. 38° 50' 55.05"

W. 104° 41' 22.66"



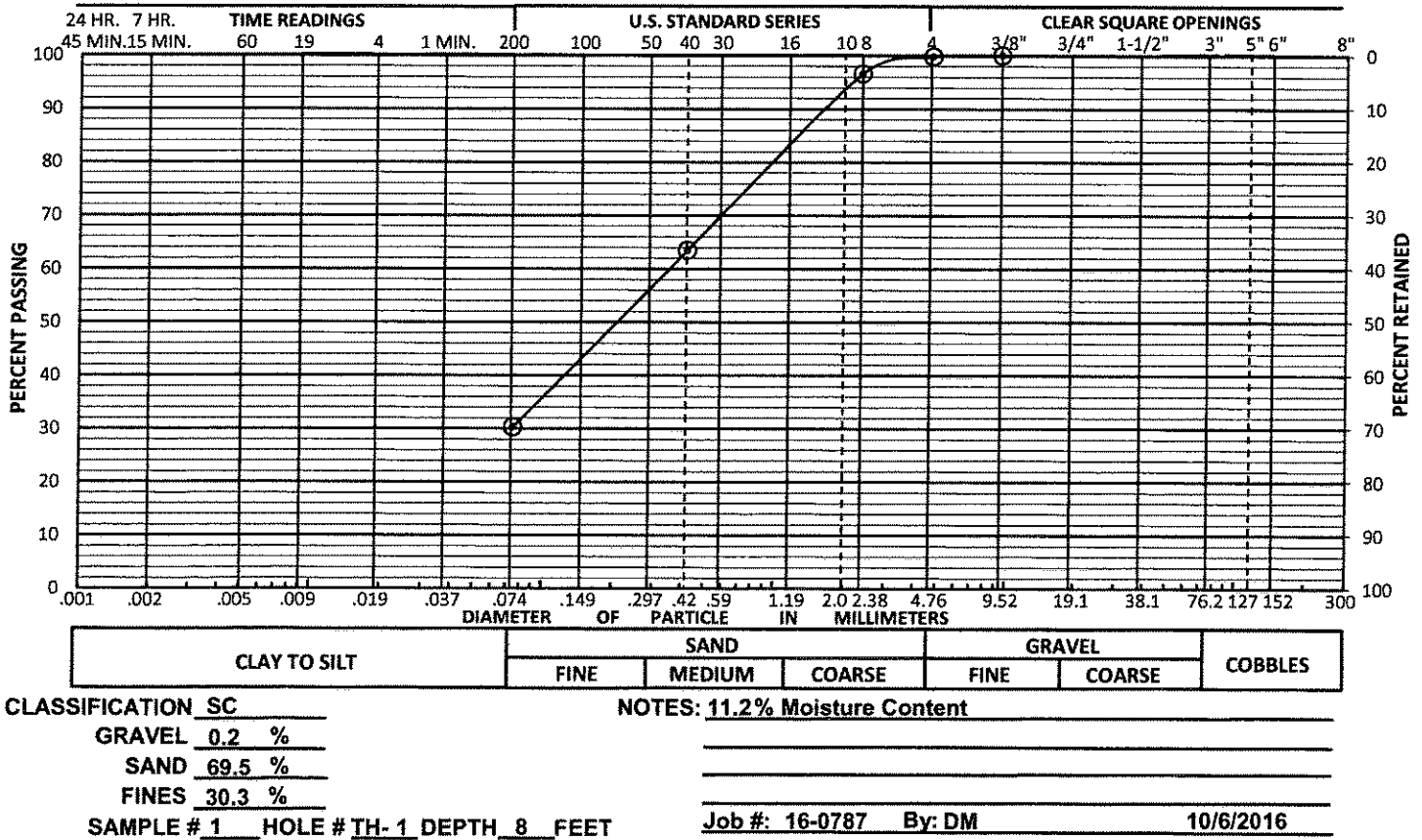
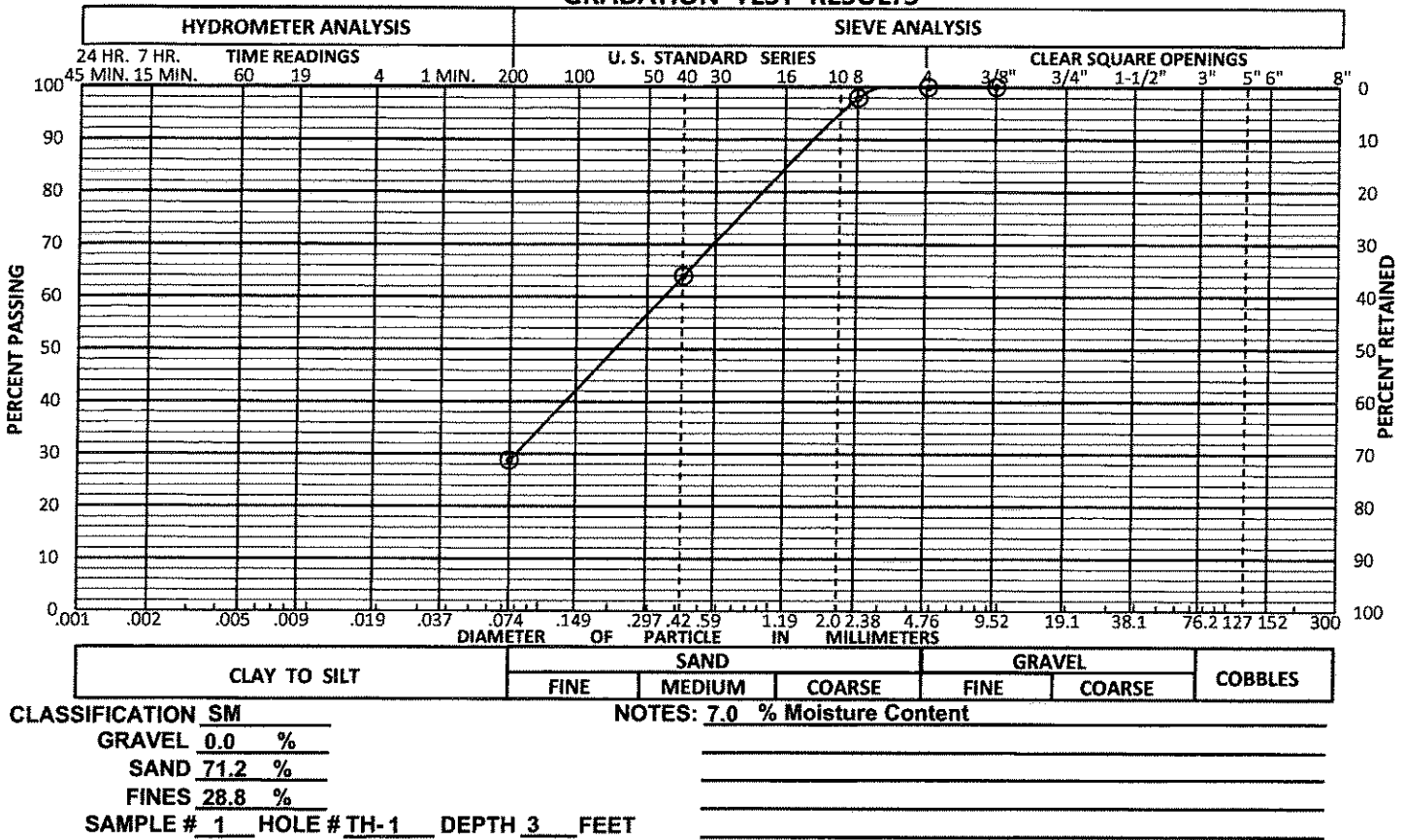
0 10 20 30 40 50

GRAPHIC SCALE IN FEET

SCALE: 1" = 50'

GEOQUEST LLC

GRADATION TEST RESULTS



APPENDIX C

- 1) NRCS Soil Study**
- 2) FEMA FIRMETTE**
- 3) Drainage map**



United States
Department of
Agriculture

NRCS

Natural
Resources
Conservation
Service

A product of the National
Cooperative Soil Survey,
a joint effort of the United
States Department of
Agriculture and other
Federal agencies, State
agencies including the
Agricultural Experiment
Stations, and local
participants

Custom Soil Resource Report for El Paso County Area, Colorado



July 13, 2017

Contents

Preface	2
How Soil Surveys Are Made	5
Soil Map	8
Soil Map.....	9
Legend.....	10
Map Unit Legend.....	11
Map Unit Descriptions.....	11
El Paso County Area, Colorado.....	13
28—Ellicott loamy coarse sand, 0 to 5 percent slopes.....	13
References	15

Soil Map

The soil map section includes the soil map for the defined area of interest, a list of soil map units on the map and extent of each map unit, and cartographic symbols displayed on the map. Also presented are various metadata about data used to produce the map, and a description of each soil map unit.

Custom Soil Resource Report
Soil Map



MAP LEGEND

Area of Interest (AOI)

Area of Interest (AOI)

Soils

Soil Map Unit Polygons

Soil Map Unit Lines

Soil Map Unit Points

Special Point Features

Blowout

Borrow Pit

Clay Spot

Closed Depression

Gravel Pit

Gravelly Spot

Landfill

Lava Flow

Marsh or swamp

Mine or Quarry

Miscellaneous Water

Perennial Water

Rock Outcrop

Saline Spot

Sandy Spot

Severely Eroded Spot

Sinkhole

Slide or Slip

Sodic Spot

Spoil Area

Stony Spot

Very Stony Spot

Wet Spot

Other

Special Line Features

Water Features

Streams and Canals

Transportation

Rails

Interstate Highways

US Routes

Major Roads

Local Roads

Background

Aerial Photography

MAP INFORMATION

The soil surveys that comprise your AOI were mapped at 1:24,000.

Warning: Soil Map may not be valid at this scale.

Enlargement of maps beyond the scale of mapping can cause misunderstanding of the detail of mapping and accuracy of soil line placement. The maps do not show the small areas of contrasting soils that could have been shown at a more detailed scale.

Please rely on the bar scale on each map sheet for map measurements.

Source of Map: Natural Resources Conservation Service
Web Soil Survey URL:
Coordinate System: Web Mercator (EPSG:3857)

Maps from the Web Soil Survey are based on the Web Mercator projection, which preserves direction and shape but distorts distance and area. A projection that preserves area, such as the Albers equal-area conic projection, should be used if more accurate calculations of distance or area are required.

This product is generated from the USDA-NRCS certified data as of the version date(s) listed below.

Soil Survey Area: El Paso County Area, Colorado
Survey Area Data: Version 14, Sep 23, 2016

Soil map units are labeled (as space allows) for map scales 1:50,000 or larger.

Date(s) aerial images were photographed: Jun 3, 2014—Jun 17, 2014

The orthophoto or other base map on which the soil lines were compiled and digitized probably differs from the background imagery displayed on these maps. As a result, some minor shifting of map unit boundaries may be evident.

Map Unit Legend

El Paso County Area, Colorado (CO625)			
Map Unit Symbol	Map Unit Name	Acres in AOI	Percent of AOI
28	Ellicott loamy coarse sand, 0 to 5 percent slopes	0.4	100.0%
Totals for Area of Interest		0.4	100.0%

Map Unit Descriptions

The map units delineated on the detailed soil maps in a soil survey represent the soils or miscellaneous areas in the survey area. The map unit descriptions, along with the maps, can be used to determine the composition and properties of a unit.

A map unit delineation on a soil map represents an area dominated by one or more major kinds of soil or miscellaneous areas. A map unit is identified and named according to the taxonomic classification of the dominant soils. Within a taxonomic class there are precisely defined limits for the properties of the soils. On the landscape, however, the soils are natural phenomena, and they have the characteristic variability of all natural phenomena. Thus, the range of some observed properties may extend beyond the limits defined for a taxonomic class. Areas of soils of a single taxonomic class rarely, if ever, can be mapped without including areas of other taxonomic classes. Consequently, every map unit is made up of the soils or miscellaneous areas for which it is named and some minor components that belong to taxonomic classes other than those of the major soils.

Most minor soils have properties similar to those of the dominant soil or soils in the map unit, and thus they do not affect use and management. These are called noncontrasting, or similar, components. They may or may not be mentioned in a particular map unit description. Other minor components, however, have properties and behavioral characteristics divergent enough to affect use or to require different management. These are called contrasting, or dissimilar, components. They generally are in small areas and could not be mapped separately because of the scale used. Some small areas of strongly contrasting soils or miscellaneous areas are identified by a special symbol on the maps. If included in the database for a given area, the contrasting minor components are identified in the map unit descriptions along with some characteristics of each. A few areas of minor components may not have been observed, and consequently they are not mentioned in the descriptions, especially where the pattern was so complex that it was impractical to make enough observations to identify all the soils and miscellaneous areas on the landscape.

The presence of minor components in a map unit in no way diminishes the usefulness or accuracy of the data. The objective of mapping is not to delineate pure taxonomic classes but rather to separate the landscape into landforms or landform segments that have similar use and management requirements. The delineation of such segments on the map provides sufficient information for the development of resource plans. If intensive use of small areas is planned, however,

onsite investigation is needed to define and locate the soils and miscellaneous areas.

An identifying symbol precedes the map unit name in the map unit descriptions. Each description includes general facts about the unit and gives important soil properties and qualities.

Soils that have profiles that are almost alike make up a *soil series*. Except for differences in texture of the surface layer, all the soils of a series have major horizons that are similar in composition, thickness, and arrangement.

Soils of one series can differ in texture of the surface layer, slope, stoniness, salinity, degree of erosion, and other characteristics that affect their use. On the basis of such differences, a soil series is divided into *soil phases*. Most of the areas shown on the detailed soil maps are phases of soil series. The name of a soil phase commonly indicates a feature that affects use or management. For example, Alpha silt loam, 0 to 2 percent slopes, is a phase of the Alpha series.

Some map units are made up of two or more major soils or miscellaneous areas. These map units are complexes, associations, or undifferentiated groups.

A *complex* consists of two or more soils or miscellaneous areas in such an intricate pattern or in such small areas that they cannot be shown separately on the maps. The pattern and proportion of the soils or miscellaneous areas are somewhat similar in all areas. Alpha-Beta complex, 0 to 6 percent slopes, is an example.

An *association* is made up of two or more geographically associated soils or miscellaneous areas that are shown as one unit on the maps. Because of present or anticipated uses of the map units in the survey area, it was not considered practical or necessary to map the soils or miscellaneous areas separately. The pattern and relative proportion of the soils or miscellaneous areas are somewhat similar. Alpha-Beta association, 0 to 2 percent slopes, is an example.

An *undifferentiated group* is made up of two or more soils or miscellaneous areas that could be mapped individually but are mapped as one unit because similar interpretations can be made for use and management. The pattern and proportion of the soils or miscellaneous areas in a mapped area are not uniform. An area can be made up of only one of the major soils or miscellaneous areas, or it can be made up of all of them. Alpha and Beta soils, 0 to 2 percent slopes, is an example.

Some surveys include *miscellaneous areas*. Such areas have little or no soil material and support little or no vegetation. Rock outcrop is an example.

El Paso County Area, Colorado

28—Ellicott loamy coarse sand, 0 to 5 percent slopes

Map Unit Setting

National map unit symbol: 3680
Elevation: 5,500 to 6,500 feet
Mean annual precipitation: 13 to 15 inches
Mean annual air temperature: 47 to 50 degrees F
Frost-free period: 125 to 145 days
Farmland classification: Not prime farmland

Map Unit Composition

Ellicott and similar soils: 85 percent
Estimates are based on observations, descriptions, and transects of the mapunit.

Description of Ellicott

Setting

Landform: Flood plains, stream terraces
Landform position (three-dimensional): Tread
Down-slope shape: Linear
Across-slope shape: Linear
Parent material: Sandy alluvium

Typical profile

A - 0 to 4 inches: loamy coarse sand
C - 4 to 60 inches: stratified coarse sand to sandy loam

Properties and qualities

Slope: 0 to 5 percent
Depth to restrictive feature: More than 80 inches
Natural drainage class: Somewhat excessively drained
Runoff class: Very low
Capacity of the most limiting layer to transmit water (Ksat): High to very high (5.95 to 19.98 in/hr)
Depth to water table: More than 80 inches
Frequency of flooding: Frequent
Frequency of ponding: None
Available water storage in profile: Low (about 4.1 inches)

Interpretive groups

Land capability classification (irrigated): None specified
Land capability classification (nonirrigated): 7w
Hydrologic Soil Group: A
Ecological site: Sandy Bottomland LRU's A & B (R069XY031CO)
Other vegetative classification: SANDY BOTTOMLAND (069AY031CO)
Hydric soil rating: No

Minor Components

Fluvaquentic haplaquoll

Percent of map unit:
Landform: Swales
Hydric soil rating: Yes

Custom Soil Resource Report

Other soils

Percent of map unit:

Hydric soil rating: No

Pleasant

Percent of map unit:

Landform: Depressions

Hydric soil rating: Yes

References

- American Association of State Highway and Transportation Officials (AASHTO). 2004. Standard specifications for transportation materials and methods of sampling and testing. 24th edition.
- American Society for Testing and Materials (ASTM). 2005. Standard classification of soils for engineering purposes. ASTM Standard D2487-00.
- Cowardin, L.M., V. Carter, F.C. Golet, and E.T. LaRoe. 1979. Classification of wetlands and deep-water habitats of the United States. U.S. Fish and Wildlife Service FWS/OBS-79/31.
- Federal Register. July 13, 1994. Changes in hydric soils of the United States.
- Federal Register. September 18, 2002. Hydric soils of the United States.
- Hurt, G.W., and L.M. Vasilas, editors. Version 6.0, 2006. Field indicators of hydric soils in the United States.
- National Research Council. 1995. Wetlands: Characteristics and boundaries.
- Soil Survey Division Staff. 1993. Soil survey manual. Soil Conservation Service. U.S. Department of Agriculture Handbook 18. http://www.nrcs.usda.gov/wps/portal/nrcs/detail/national/soils/?cid=nrcs142p2_054262
- Soil Survey Staff. 1999. Soil taxonomy: A basic system of soil classification for making and interpreting soil surveys. 2nd edition. Natural Resources Conservation Service, U.S. Department of Agriculture Handbook 436. http://www.nrcs.usda.gov/wps/portal/nrcs/detail/national/soils/?cid=nrcs142p2_053577
- Soil Survey Staff. 2010. Keys to soil taxonomy. 11th edition. U.S. Department of Agriculture, Natural Resources Conservation Service. http://www.nrcs.usda.gov/wps/portal/nrcs/detail/national/soils/?cid=nrcs142p2_053580
- Tiner, R.W., Jr. 1985. Wetlands of Delaware. U.S. Fish and Wildlife Service and Delaware Department of Natural Resources and Environmental Control, Wetlands Section.
- United States Army Corps of Engineers, Environmental Laboratory. 1987. Corps of Engineers wetlands delineation manual. Waterways Experiment Station Technical Report Y-87-1.
- United States Department of Agriculture, Natural Resources Conservation Service. National forestry manual. http://www.nrcs.usda.gov/wps/portal/nrcs/detail/soils/home/?cid=nrcs142p2_053374
- United States Department of Agriculture, Natural Resources Conservation Service. National range and pasture handbook. <http://www.nrcs.usda.gov/wps/portal/nrcs/detail/national/landuse/rangepasture/?cid=stelprdb1043084>

Custom Soil Resource Report

United States Department of Agriculture, Natural Resources Conservation Service. National soil survey handbook, title 430-VI. http://www.nrcs.usda.gov/wps/portal/nrcs/detail/soils/scientists/?cid=nrcs142p2_054242

United States Department of Agriculture, Natural Resources Conservation Service. 2006. Land resource regions and major land resource areas of the United States, the Caribbean, and the Pacific Basin. U.S. Department of Agriculture Handbook 296. http://www.nrcs.usda.gov/wps/portal/nrcs/detail/national/soils/?cid=nrcs142p2_053624

United States Department of Agriculture, Soil Conservation Service. 1961. Land capability classification. U.S. Department of Agriculture Handbook 210. http://www.nrcs.usda.gov/Internet/FSE_DOCUMENTS/nrcs142p2_052290.pdf



APPROXIMATE SCALE IN FEET

500 0 500

NATIONAL FLOOD INSURANCE PROGRAM

FIRM
FLOOD INSURANCE RATE MAP
**EL PASO COUNTY,
COLORADO AND
INCORPORATED AREAS**

PANEL 752 OF 1300
(SEE MAP INDEX FOR PANELS NOT PRINTED)

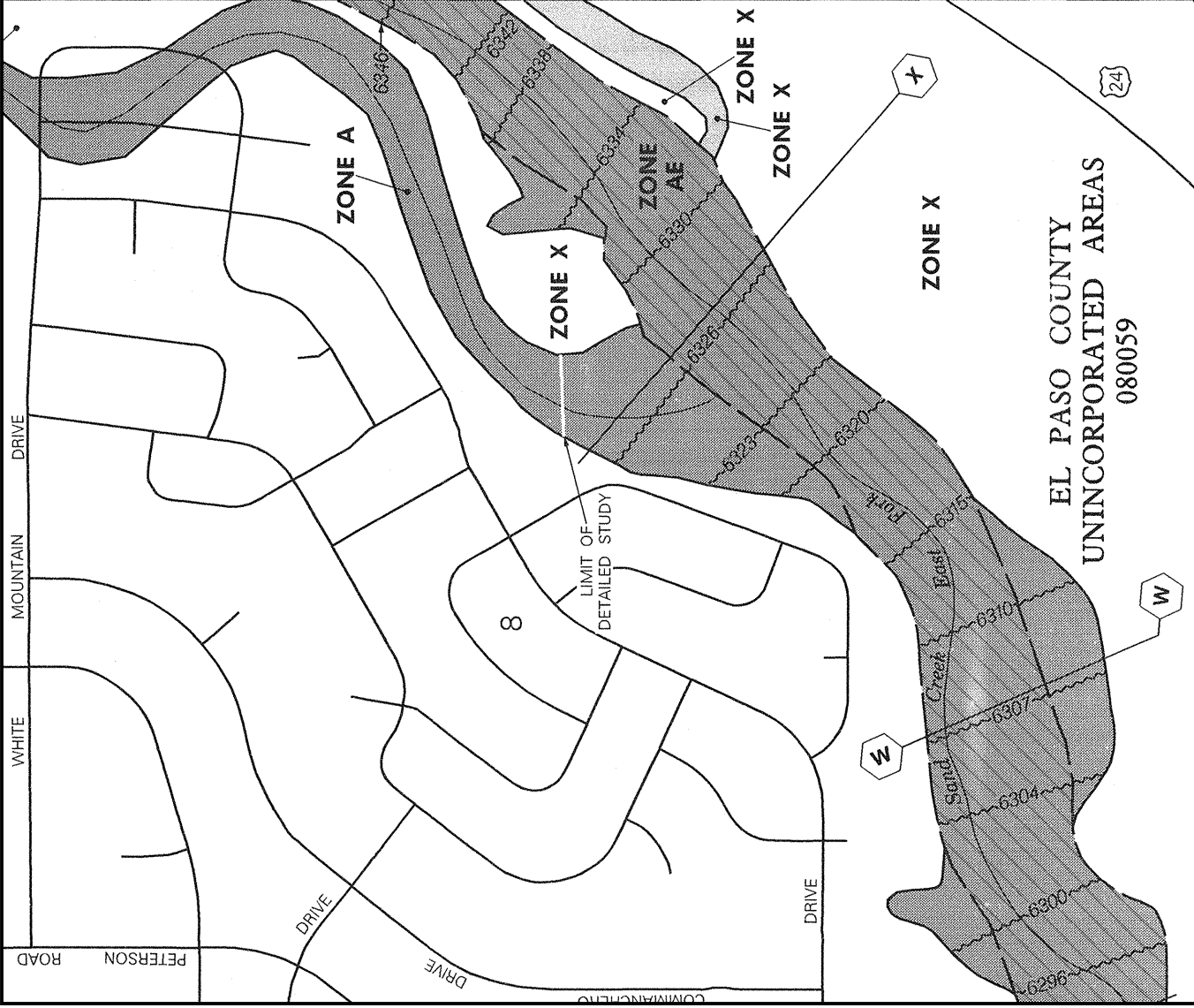
CONTAINS: COMMUNITY	NUMBER	PANEL	SUFFIX
COLORADO SPRINGS, CITY OF	080060	0752	F
EL PASO COUNTY, UNINCORPORATED AREAS	080069	0752	F

MAP NUMBER
08041C0752 F
EFFECTIVE DATE:
MARCH 17, 1997

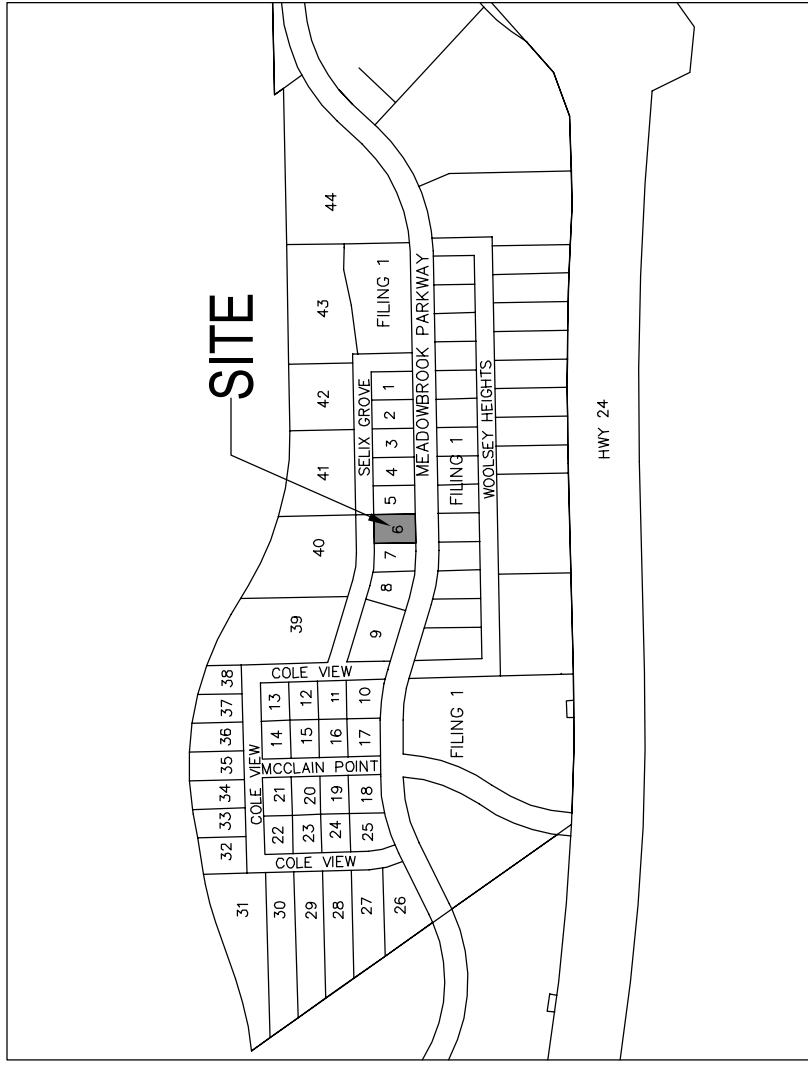
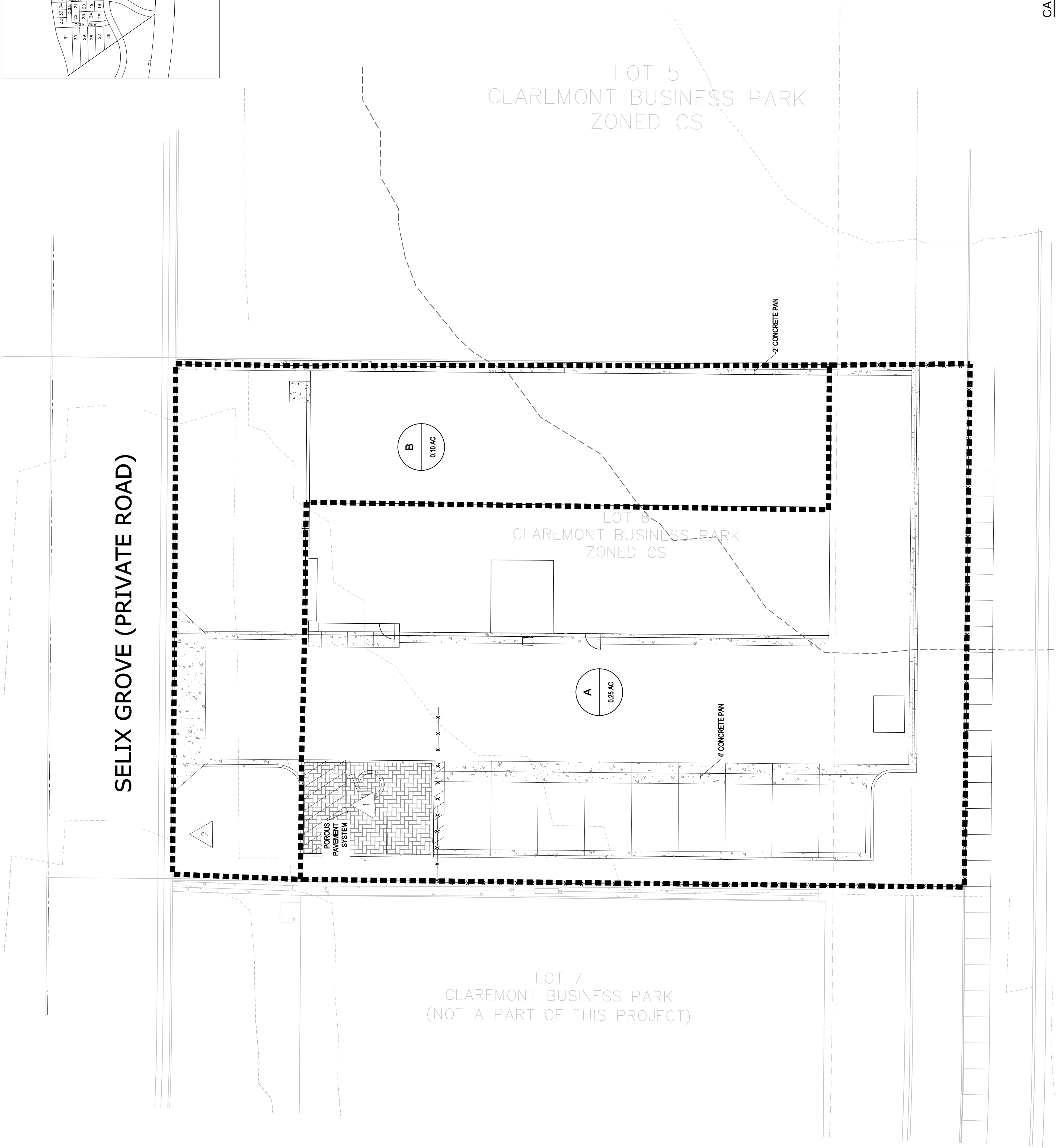


Federal Emergency Management Agency

This is an official copy of a portion of the above referenced flood map. It was extracted using F-MIT On-Line. This map does not reflect changes or amendments which may have been made subsequent to the date on the title block. For the latest product information about National Flood Insurance Program flood maps check the FEMA Flood Map Store at www.msc.fema.gov



38°50'37"
104°41'15"



SITE MAP
NTS

COPYRIGHT

THESE PLANS ARE AN INSTRUMENT OF SERVICE AND ARE THE PROPERTY OF GALLOWAY, AND MAY NOT BE DUPLICATED, DISCLOSED, OR REPRODUCED WITHOUT THE WRITTEN CONSENT OF GALLOWAY. COPYRIGHTS AND INFRINGEMENTS WILL BE ENFORCED AND PROSECUTED.

DRAINAGE MAP
1001 LLC
CBP, F2 - LOT #6

1435 SELIX GROVE
COLORADO SPRINGS, CO

#	Date	Issue / Description	Init.
1			
2			
3			
4			
5			
6			
7			
8			
9			
10			
11			
12			
13			
14			
15			
16			
17			
18			
19			
20			
21			
22			
23			
24			
25			
26			
27			
28			
29			
30			
31			
32			
33			
34			
35			
36			
37			
38			
39			
40			
41			
42			
43			
44			
45			
46			
47			
48			
49			
50			
51			
52			
53			
54			
55			
56			
57			
58			
59			
60			
61			
62			
63			
64			
65			
66			
67			
68			
69			
70			
71			
72			
73			
74			
75			
76			
77			
78			
79			
80			
81			
82			
83			
84			
85			
86			
87			
88			
89			
90			
91			
92			
93			
94			
95			
96			
97			
98			
99			
100			

Project No:	HC1003.1
Drawn By:	RCG
Checked By:	TAC
Date:	AUGUST 2017

PROPOSED DRAINAGE MAP

R
R

CAUTION - NOTICE TO CONTRACTOR

1. ALL UTILITY LOCATIONS SHOWN ARE BASED ON MAPS PROVIDED BY THE APPROPRIATE UTILITY COMPANY AND FIELD SURFACE EVIDENCE AT THE TIME OF SURVEY AND IS TO BE CONSIDERED AN APPROXIMATE LOCATION ONLY. IT IS THE CONTRACTOR'S RESPONSIBILITY TO FIELD VERIFY THE LOCATION OF ALL UTILITIES, PUBLIC OR PRIVATE, WHETHER ON THE PLANS OR NOT. PRIOR TO CONSTRUCTION REPORT ANY DISCREPANCIES TO THE ENGINEER PRIOR TO CONSTRUCTION.
2. WHERE A PROPOSED UTILITY CROSSES AN EXISTING UTILITY, IT IS THE CONTRACTOR'S RESPONSIBILITY TO FIELD VERIFY THE HORIZONTAL AND VERTICAL LOCATION OF SUCH EXISTING UTILITY, EITHER THROUGH POT-HOLING OR AN ALTERNATE METHOD. REPORT INFORMATION TO THE ENGINEER PRIOR TO CONSTRUCTION.



**Know what's Below.
Call before you dig.**

PCD PROJECT NO. PPR-17-033