

GRADING AND EROSION CONTROL NOTES:

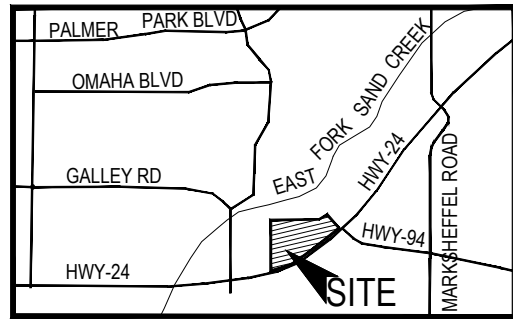
- CONSTRUCTION MAY NOT COMMENCE UNTIL A CONSTRUCTION PERMIT IS OBTAINED FROM **DEVELOPMENT SERVICES** AND A PRECONSTRUCTION CONFERENCE IS HELD WITH **DEVELOPMENT SERVICES** INSPECTIONS.
- STORMWATER DISCHARGES FROM CONSTRUCTION SITES SHALL NOT CAUSE OR THREATEN TO CAUSE POLLUTION, CONTAMINATION, OR DEGRADATION OF STATE WATERS. ALL WORK AND EARTH DISTURBANCE SHALL BE DONE IN A MANNER THAT MINIMIZES POLLUTION OF ANY ON-SITE OR OFF-SITE WATERS, INCLUDING WETLANDS.
- NOTWITHSTANDING ANYTHING DEPICTED IN THESE PLANS IN WORDS OR GRAPHIC REPRESENTATION, ALL DESIGN AND CONSTRUCTION RELATED TO ROADS, STORM DRAINAGE AND EROSION CONTROL SHALL CONFORM TO THE STANDARDS AND REQUIREMENTS OF THE MOST RECENT VERSION OF THE RELEVANT ADOPTED EL PASO COUNTY STANDARDS, INCLUDING THE LAND DEVELOPMENT CODE, THE ENGINEERING CRITERIA MANUAL, THE DRAINAGE CRITERIA MANUAL, AND THE DRAINAGE CRITERIA MANUAL VOLUME 2. ANY DEVIATIONS TO REGULATIONS AND STANDARDS MUST BE REQUESTED, AND APPROVED, IN WRITING.
- A SEPARATE STORMWATER MANAGEMENT PLAN (SWMP) FOR THIS PROJECT SHALL BE COMPLETED AND AN EROSION AND STORMWATER QUALITY CONTROL PERMIT (ESQCP) ISSUED PRIOR TO COMMENCING CONSTRUCTION. DURING CONSTRUCTION THE SWMP IS THE RESPONSIBILITY OF THE DESIGNATED STORMWATER MANAGER, SHALL BE LOCATED ON SITE AT ALL TIMES AND SHALL BE KEPT UP TO DATE WITH WORK PROGRESS AND CHANGES IN THE FIELD.
- ONCE THE ESQCP HAS BEEN ISSUED, THE CONTRACTOR MAY INSTALL THE INITIAL STAGE EROSION AND SEDIMENT CONTROL BMPs AS INDICATED ON THE GEC. A PRECONSTRUCTION MEETING BETWEEN THE CONTRACTOR, ENGINEER, AND EL PASO COUNTY WILL BE HELD PRIOR TO ANY CONSTRUCTION. IT IS THE RESPONSIBILITY OF THE APPLICANT TO COORDINATE THE MEETING TIME AND PLACE WITH COUNTY **DSO** INSPECTIONS STAFF.
- SOIL EROSION CONTROL MEASURES FOR ALL SLOPES, CHANNELS, DITCHES, OR ANY DISTURBED LAND AREA SHALL BE COMPLETED WITHIN 21 CALENDAR DAYS AFTER FINAL GRADING, OR FINAL EARTH DISTURBANCE, HAS BEEN COMPLETED. DISTURBED AREAS AND STOCKPILES WHICH ARE NOT AT FINAL GRADE BUT WILL REMAIN DORMANT FOR LONGER THAN 30 DAYS SHALL ALSO BE MULCHED WITHIN 21 DAYS AFTER INTERIM GRADING. AN AREA THAT IS GOING TO REMAIN IN AN INTERIM STATE FOR MORE THAN 60 DAYS SHALL ALSO BE SEEDED. ALL TEMPORARY SOIL EROSION CONTROL MEASURES AND BMPs SHALL BE MAINTAINED UNTIL PERMANENT SOIL EROSION CONTROL MEASURES ARE IMPLEMENTED AND ESTABLISHED.
- TEMPORARY SOIL EROSION CONTROL FACILITIES SHALL BE REMOVED AND EARTH DISTURBANCE AREAS GRADED AND STABILIZED WITH PERMANENT SOIL EROSION CONTROL MEASURES PURSUANT TO STANDARDS AND SPECIFICATION PRESCRIBED IN THE DCM VOLUME II AND THE ENGINEERING CRITERIA MANUAL (ECM) APPENDIX I.
- ALL PERSONS ENGAGED IN EARTH DISTURBANCE SHALL IMPLEMENT AND MAINTAIN ACCEPTABLE SOIL EROSION AND SEDIMENT CONTROL MEASURES INCLUDING BMPs WITH THE EROSION CONTROL TECHNICAL STANDARDS OF THE DRAINAGE CRITERIA MANUAL (DCM) VOLUME II AND IN ACCORDANCE WITH THE STORMWATER MANAGEMENT PLAN (SWMP).
- ALL TEMPORARY EROSION CONTROL FACILITIES INCLUDING BMPs AND ALL PERMANENT FACILITIES INTENDED TO CONTROL EROSION OF ANY EARTH DISTURBANCE OPERATIONS SHALL BE INSTALLED AS DEFINED IN THE APPROVED PLANS, THE SWMP AND THE DCM VOLUME II AND MAINTAINED THROUGHOUT THE DURATION OF THE EARTH DISTURBANCE OPERATION.
- ANY EARTH DISTURBANCE SHALL BE CONDUCTED IN SUCH A MANNER SO AS TO EFFECTIVELY REDUCE ACCELERATED SOIL EROSION AND RESULTING SEDIMENTATION; ALL DISTURBANCES SHALL BE DESIGNED, CONSTRUCTED, AND COMPLETED SO THAT THE EXPOSED AREA OF ANY DISTURBED LAND SHALL BE LIMITED TO THE SHORTEST PRACTICAL PERIOD OF TIME.
- ANY TEMPORARY OR PERMANENT FACILITY DESIGNED AND CONSTRUCTED FOR THE CONVEYANCE OF STORMWATER AROUND, THROUGH, OR FROM THE EARTH DISTURBANCE AREA SHALL BE DESIGNED TO LIMIT THE DISCHARGE TO A NON-EROSIVE VELOCITY.
- CONCRETE WASH WATER SHALL BE CONTAINED AND DISPOSED OF IN ACCORDANCE WITH THE SWMP. NO WASH WATER SHALL BE DISCHARGED TO OR ALLOWED TO RUNOFF TO STATE WATERS, INCLUDING ANY SURFACE OR SUBSURFACE STORM DRAINAGE SYSTEM OR FACILITIES.
- EROSION CONTROL BLANKETING IS TO BE USED ON SLOPES STEEPER THAN 3:1.
- BUILDING, CONSTRUCTION, EXCAVATION, OR OTHER WASTE MATERIALS SHALL NOT BE TEMPORARILY PLACED OR STORED IN THE STREET, ALLEY, OR OTHER PUBLIC WAY, UNLESS IN ACCORDANCE WITH AN APPROVED TRAFFIC CONTROL PLAN. BMP'S MAY BE REQUIRED BY EL PASO COUNTY ENGINEERING IF DEEMED NECESSARY, BASED ON SPECIFIC CONDITIONS AND CIRCUMSTANCES.
- VEHICLE TRACKING OF SOILS AND CONSTRUCTION DEBRIS OFF-SITE SHALL BE MINIMIZED. MATERIALS TRACKED OFFSITE SHALL BE CLEANED UP AND PROPERLY DISPOSED OF IMMEDIATELY.
- CONTRACTOR SHALL BE RESPONSIBLE FOR THE REMOVAL OF ALL WASTES FROM THE CONSTRUCTION SITE FOR DISPOSAL IN ACCORDANCE WITH LOCAL AND STATE REGULATORY REQUIREMENTS. NO CONSTRUCTION DEBRIS, TREE SLASH, BUILDING MATERIAL WASTES OR UNUSED BUILDING MATERIALS SHALL BE BURIED, DUMPED, OR DISCHARGED AT THE SITE.
- THE OWNER, SITE DEVELOPER, CONTRACTOR, AND/OR THEIR AUTHORIZED AGENTS SHALL BE RESPONSIBLE FOR THE REMOVAL OF ALL CONSTRUCTION DEBRIS, DIRT, TRASH, ROCK, SEDIMENT, AND SAND THAT MAY ACCUMULATE IN THE STORM SEWER OR OTHER DRAINAGE CONVEYANCE SYSTEM AND STORMWATER APPURTENANCES AS A RESULT OF SITE DEVELOPMENT.
- THE QUANTITY OF MATERIALS STORED ON THE PROJECT SITE SHALL BE LIMITED, AS MUCH AS PRACTICAL, TO THAT QUANTITY REQUIRED TO PERFORM THE WORK IN AN ORDERLY SEQUENCE. ALL MATERIALS STORED ON-SITE SHALL BE STORED IN A NEAT, ORDERLY MANNER, IN THEIR ORIGINAL CONTAINERS, WITH ORIGINAL MANUFACTURER'S LABELS.
- NO CHEMICALS ARE TO BE USED BY THE CONTRACTOR, WHICH HAVE THE POTENTIAL TO BE RELEASED IN STORMWATER UNLESS PERMISSION FOR THE USE OF A SPECIFIC CHEMICAL IS GRANTED IN WRITING BY THE ECM ADMINISTRATOR. IN GRANTING THE USE OF SUCH CHEMICALS, SPECIAL CONDITIONS AND MONITORING MAY BE REQUIRED.
- BULK STORAGE STRUCTURES FOR PETROLEUM PRODUCTS AND OTHER CHEMICALS SHALL HAVE ADEQUATE PROTECTION SO AS TO CONTAIN ALL SPILLS AND PREVENT ANY SPILLED MATERIAL FROM ENTERING STATE WATERS, INCLUDING ANY SURFACE OR SUBSURFACE STORM DRAINAGE SYSTEM OR FACILITIES.
- NO PERSON SHALL CAUSE THE IMPEDIMENT OF STORMWATER FLOW IN THE FLOW LINE OF THE CURB AND GUTTER OR IN THE DITCHLINE.
- INDIVIDUALS SHALL COMPLY WITH THE COLORADO WATER QUALITY CONTROL ACT (TITLE 25, ARTICLE 8, CRS), AND THE CLEAN WATER ACT (33 USC 1344), IN ADDITION TO THE REQUIREMENTS INCLUDED IN THE DCM VOLUME II AND THE ECM APPENDIX I. ALL APPROPRIATE PERMITS MUST BE OBTAINED BY THE CONTRACTOR PRIOR TO CONSTRUCTION (NPDES, FLOODPLAIN, 404, FUGITIVE DUST, ETC.). IN THE EVENT OF CONFLICTS BETWEEN THESE REQUIREMENTS AND LAWS, RULES, OR REGULATIONS OF OTHER FEDERAL, STATE, OR COUNTY AGENCIES, THE MORE RESTRICTIVE LAWS, RULES, OR REGULATIONS SHALL APPLY.
- ALL CONSTRUCTION TRAFFIC MUST ENTER/EXIT THE SITE AT APPROVED CONSTRUCTION ACCESS POINTS.
- PRIOR TO ACTUAL CONSTRUCTION THE PERMITEE SHALL VERIFY THE LOCATION OF EXISTING UTILITIES.
- A WATER SOURCE SHALL BE AVAILABLE ON SITE DURING EARTHWORK OPERATIONS AND UTILIZED AS REQUIRED TO MINIMIZE DUST FROM EARTHWORK EQUIPMENT AND WIND.
- THE SOILS REPORT FOR THIS SITE HAS BEEN PREPARED BY \_\_\_\_\_ # XXXXXXXX (DATE XXXXXX) AND SHALL BE CONSIDERED A PART OF THESE PLANS.
- AT LEAST TEN DAYS PRIOR TO THE ANTICIPATED START OF CONSTRUCTION, FOR PROJECTS THAT WILL DISTURB 1 ACRE OR MORE, THE OWNER OR OPERATOR OF CONSTRUCTION ACTIVITY SHALL SUBMIT A PERMIT APPLICATION FOR STORMWATER DISCHARGE TO THE COLORADO DEPARTMENT OF PUBLIC HEALTH AND ENVIRONMENT, WATER QUALITY DIVISION. THE APPLICATION CONTAINS CERTIFICATION OF COMPLETION OF A STORMWATER MANAGEMENT PLAN (SWMP), OF WHICH THIS GRADING AND EROSION CONTROL PLAN MAY BE A PART. FOR INFORMATION OR APPLICATION MATERIALS CONTACT:  
COLORADO DEPARTMENT OF PUBLIC HEALTH AND ENVIRONMENT  
WATER QUALITY CONTROL DIVISION  
WOOD - PERMITS  
4300 CHERRY CREEK DRIVE SOUTH  
DENVER, CO 80246-1530  
ATTN: PERMITS UNIT

STANDARD CONSTRUCTION NOTES:

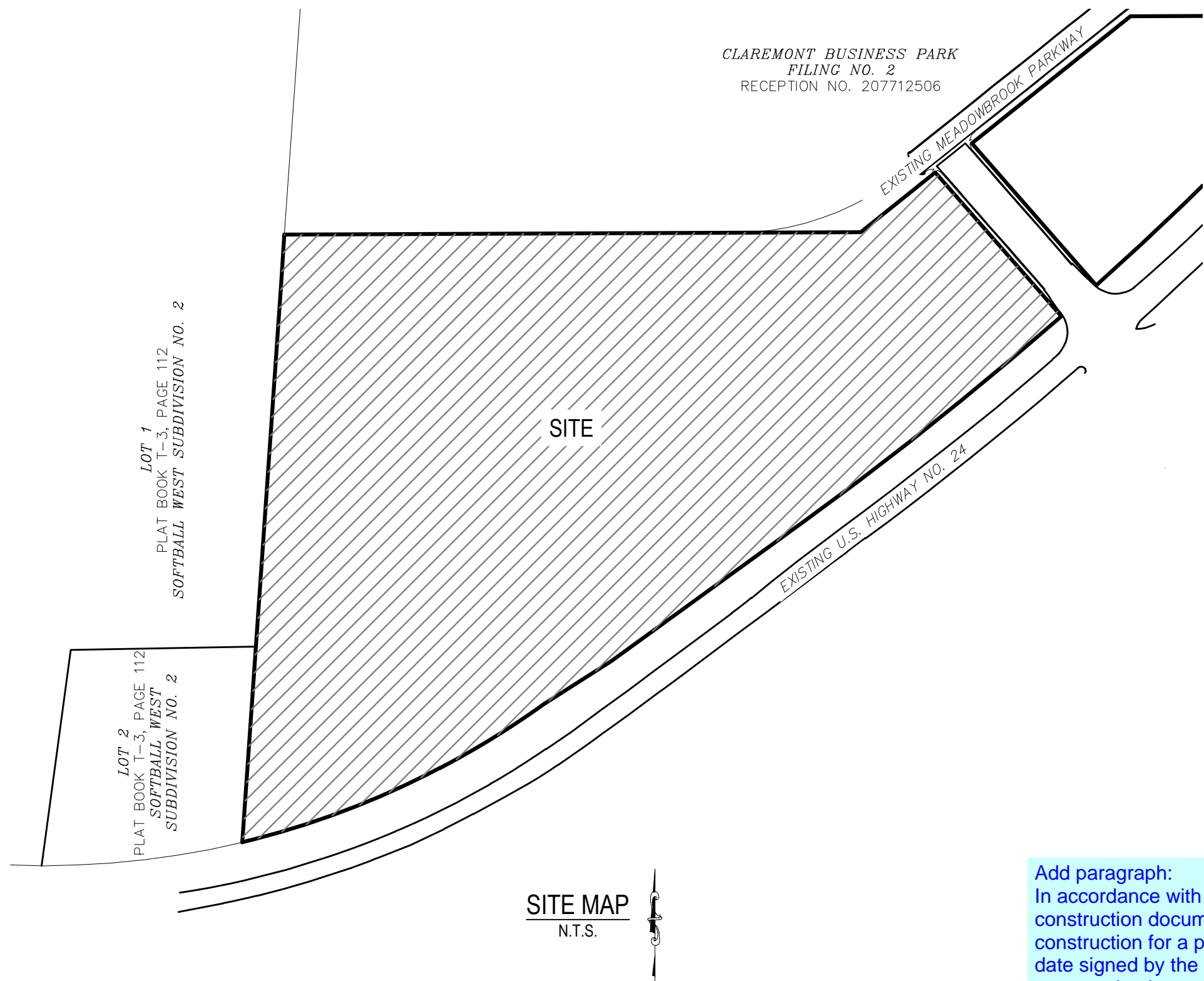
- ALL DRAINAGE AND ROADWAY CONSTRUCTION SHALL MEET THE STANDARDS AND SPECIFICATIONS OF THE CITY OF COLORADO SPRINGS/EL PASO COUNTY DRAINAGE CRITERIA MANUAL VOLUMES 1 AND 2, AND THE EL PASO COUNTY ENGINEERING CRITERIA MANUAL.
- CONTRACTOR SHALL BE RESPONSIBLE FOR THE NOTIFICATION AND FIELD LOCATION OF ALL EXISTING UTILITIES, WHETHER SHOWN ON THE PLANS OR NOT, BEFORE BEGINNING CONSTRUCTION. LOCATION OF EXISTING UTILITIES SHALL BE VERIFIED BY THE CONTRACTOR PRIOR TO CONSTRUCTION. CALL 811 TO CONTACT THE UTILITY NOTIFICATION CENTER OF COLORADO SPRINGS.
- CONTRACTOR SHALL KEEP A COPY OF THESE APPROVED PLANS, THE GRADING AND EROSION CONTROL PLAN, THE STORMWATER MANAGEMENT PLAN (SWMP), THE SOILS AND GEOTECHNICAL REPORT AND THE APPROPRIATE DESIGN AND CONSTRUCTION STANDARDS AND SPECIFICATIONS AT THE JOB SITE AT ALL TIME INCLUDING THE FOLLOWING:
  - EL PASO COUNTY ENGINEERING CRITERIA MANUAL (ECM)
  - CITY OF COLORADO SPRINGS/EL PASO COUNTY ENGINEERING CRITERIA MANUAL VOLUMES 1 AND 2
  - COLORADO DEPARTMENT OF TRANSPORTATION (CDOT) STANDARDS SPECIFICATION FOR ROAD AND BRIDGE CONSTRUCTION.
  - CDOT M&S STANDARDS.
- IT IS THE DESIGN ENGINEER'S RESPONSIBILITY TO ACCURACY SHOW EXISTING CONDITION BOTH ONSITE AND OFFSITE ON THE CONSTRUCTION PLANS. ANY MODIFICATION NECESSARY DUE TO CONFLICT OMISSIONS OR CHANGED CONDITIONS WILL BE ENTIRELY THE DEVELOPER'S RESPONSIBILITY TO RECTIFY.
- ONCE THE ESQCP HAS BEEN ISSUED, THE CONTRACTOR MAY INSTALL THE INITIAL STAGE EROSION AND SEDIMENT CONTROL BMPs AS INDICATED ON THE GEC. A PRECONSTRUCTION MEETING BETWEEN THE CONTRACTOR, ENGINEER, AND EL PASO COUNTY WILL BE HELD PRIOR TO ANY CONSTRUCTION. IT IS THE RESPONSIBILITY OF THE APPLICANT TO COORDINATE THE MEETING TIME AND PLACE WITH COUNTY **DSO** INSPECTIONS STAFF.
- IT IS THE CONTRACTORS RESPONSIBILITY TO UNDERSTAND THE REQUIREMENTS OF ALL JURISDICTIONAL AGENCIES AND TO OBTAIN ALL REQUIRED PERMITS, INCLUDING BUT NOT LIMITED TO EL PASO COUNTY EROSION AND STORM WATER QUALITY CONTROL PERMIT (ESQCP), US ARMY CORPS OF ENGINEER ISSUED 401 AND/OR 404 PERMITS AND COUNTY AND STATE FUGITIVE DUST PERMITS.
- ALL CONSTRUCTION TRAFFIC MUST ENTER/EXIT THE CONSTRUCTION SITE AT APPROVED CONSTRUCTION ACCESS POINTS.
- ANY TEMPORARY SIGNAGE AND STRIPING SHALL COMPLY WITH EL PASO COUNTY **DSO** AND MUTCD CRITERIA.
- CONTRACTOR SHALL OBTAIN ANY PERMITS REQUIRE BY EL PASO COUNTY **DSO** INCLUDING WORK WITHIN THE RIGHT-OF-WAY AND SPECIAL TRANSPORT PERMITS.
- THE LIMITS OF CONSTRUCTION SHALL REMAIN WITHIN THE PROPERTY LINE UNLESS OTHERWISE NOTED. THE OWNER/DEVELOPER SHALL OBTAIN WRITTEN PERMISSION AND EASEMENTS, WHERE REQUIRED, FROM ADJOINING PROPERTY OWNER(S) PRIOR TO ANY OFFSITE DISTURBANCE GRADING, OR CONSTRUCTION.

MEADOWBROOK TOWNHOMES  
COUNTY OF EL PASO, STATE OF COLORADO  
DIRT BORROW SITE - GRADING & EROSION CONTROL PLANS

AUG 2018



VICINITY MAP  
N.T.S.



SITE MAP  
N.T.S.

Add paragraph:  
In accordance with ECM Section 1.12, these construction documents will be valid for construction for a period of 2 years from the date signed by the El Paso County Engineer. If construction has not started within those 2 years, the plans will need to be resubmitted for approval, including payment of review fees at the Planning and Community Development Directors discretion.

AGENCIES

OWNER: THE LANDHUIS COMPANY  
212 N. WAHSATCH AVE. SUITE 301  
COLORADO SPRINGS, CO 80903  
JEFF MARK (719) 635-3200

CIVIL ENGINEER: M & S CIVIL CONSULTANTS, INC.  
20 BOULDER CRESCENT, SUITE 110  
COLORADO SPRINGS, CO 80903  
VIRGIL A. SANCHEZ P.E. (719) 955-5485

ENGINEERING DIVISION: EL PASO COUNTY DEVELOPMENT SERVICES  
2880 INTERNATIONAL CIRCLE, SUITE 110  
COLORADO SPRINGS, CO 80910  
JEFF RICE P.E. (719) 520-6300

TRAFFIC ENGINEERING: EL PASO COUNTY PUBLIC SERVICES & TRANS. DEPT.  
3275 AKERS DRIVE  
COLORADO SPRINGS, CO 80922  
JENNIFER IRVINE, P.E. (719) 520-6460

WATER RESOURCES: COLORADO SPRINGS UTILITIES  
1521 HANCOCK EXPRESSWAY  
COLORADO SPRINGS, CO 80903  
JOE NOBLE, P.E. (719) 668-3556

GAS DEPARTMENT: COLORADO SPRINGS UTILITIES  
7710 DURANT DR.  
COLORADO SPRINGS, CO 80920  
SARAH LABARRE (719) 668-4933

ELECTRIC DEPARTMENT: COLORADO SPRINGS UTILITIES  
7710 DURANT DR.  
COLORADO SPRINGS, CO 80920  
SARAH LABARRE (719) 668-4933

COMMUNICATIONS: QWEST COMMUNICATIONS  
(U.N.C.C. LOCATORS) (800) 922-1987  
AT&T (LOCATORS) (719) 635-3674

ENGINEER'S STATEMENT:

THIS GRADING AND EROSION CONTROL PLAN WAS PREPARED UNDER MY DIRECTION AND SUPERVISION AND IS CORRECT TO THE BEST OF MY KNOWLEDGE AND BELIEF. SAID PLAN HAS BEEN PREPARED ACCORDING TO THE CRITERIA ESTABLISHED BY THE COUNTY FOR GRADING AND EROSION CONTROL PLANS. I ACCEPT RESPONSIBILITY FOR ANY LIABILITY CAUSED BY NEGLIGENT ACTS, ERRORS OR OMISSIONS ON MY PART IN PREPARING THIS PLAN.

VIRGIL A. SANCHEZ, COLORADO P.E. NO. 37160  
FOR AND ON BEHALF OF M&S CIVIL CONSULTANTS, INC.

DATE

DEVELOPER'S STATEMENT:

THE OWNER WILL COMPLY WITH THE REQUIREMENTS OF THE GRADING AND EROSION CONTROL PLAN.

JEFF MARK, LANDHUIS COMPANY  
PRESIDENT

DATE

EL PASO COUNTY:

COUNTY PLAN REVIEW IS PROVIDED ONLY FOR GENERAL CONFORMANCE WITH COUNTY DESIGN CRITERIA. THE COUNTY IS NOT RESPONSIBLE FOR THE ACCURACY AND ADEQUACY OF THE DESIGN, DIMENSIONS, AND/OR ELEVATIONS WHICH SHALL BE CONFIRMED AT THE JOB SITE. THE COUNTY THROUGH THE APPROVAL OF THIS DOCUMENT ASSUMES NO RESPONSIBILITY FOR COMPLETENESS AND/OR ACCURACY OF THIS DOCUMENT.

FILED IN ACCORDANCE WITH THE REQUIREMENTS OF THE EL PASO COUNTY LAND DEVELOPMENT CODE, DRAINAGE CRITERIA AND ENGINEERING CRITERIA MANUAL AS AMENDED.

JENNIFER IRVINE, P.E. COUNTY ENGINEER/ECM ADMINISTRATOR

DATE

SHEET INDEX

SHEET 1 TITLE SHEET  
SHEET 2 EARLY GRADING PLAN  
SHEET 3 EARLY GRADING PLAN DETAILS

Revise names. This is not for pre-development grading but for borrow material.

CDR-18-009

STATEMENT:

THE CITY OF COLORADO SPRINGS RECOGNIZES THE DESIGN ENGINEER AS HAVING RESPONSIBILITY FOR THE DESIGN; THE CITY HAS LIMITED ITS SCOPE OF REVIEW ACCORDINGLY. RESUBMITTAL REQUIRED IF CONSTRUCTION HAS NOT COMMENCED WITHIN 180 DAYS AFTER APPROVAL DATE.



FOR LOCATING & MARKING GAS, ELECTRIC, WATER & TELEPHONE LINES

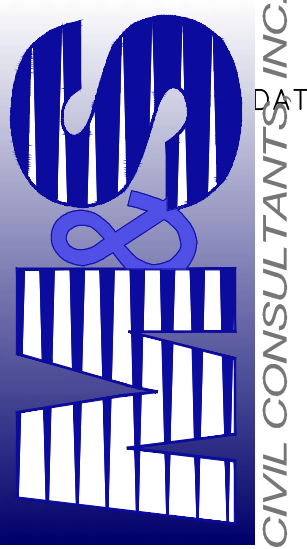
FOR BURIED UTILITY INFORMATION  
48 HRS BEFORE YOU DIG  
CALL 1-800-922-1987

MEADOWBROOK TOWNHOMES - DIRT BORROW SITE

GRADING & EROSION CONTROL PLAN

PROJECT NO. 43-089A DATE: 08/08/2018 SCALE: HORIZONTAL: N/A VERTICAL: N/A SHEET 1 OF 3 GR1

20 BOULDER CRESCENT SUITE 110  
COLORADO SPRINGS, CO 80903  
PHONE: 719.955.5485



FOR AND ON BEHALF OF M&S CIVIL CONSULTANTS, INC.

VIRGIL A. SANCHEZ, COLORADO P.E. NO. 37160

REVISIONS: NO. DATE: BY: DESCRIPTION:

THE ENGINEER PREPARING THESE PLANS WILL NOT BE RESPONSIBLE FOR UNAUTHORIZED CHANGES TO OR USES OF THESE PLANS. ALL CHANGES TO THE PLANS MUST BE IN WRITING AND MUST BE APPROVED BY THE PREPARER OF THESE PLANS.

CAUTION

EL PASO COUNTY FILE NO. CDR XX-XXX



Limit grading to extent of property. No roadway grading shall be shown

Revise. Per the detail, straw bale spacing is at ~100' interval. Update the FAE accordingly.

Relocate so spillway/rip rap is within property boundary or provide document with permission from adjacent property owner.

LOT 1  
PLAT BOOK T-3, PAGE 112  
SOFTBALL WEST SUBDIVISION NO. 2

The submitted GEC has changed the existing drainage pattern by directing all the flows into a single outfall. Analysis from the TSB to a suitable outfall (hydraulically adequate) must be included within the drainage report. Off-site improvements may be required.

EXISTING MEADOWBROOK CROSSING SUBDIVISION

CLAREMONT BUSINESS PARK  
FILING NO. 2  
RECEPTION NO. 207712506

PARCEL #2

EXISTING U.S. HIGHWAY NO. 24 (WEST BOUND)

### LEGEND

- (6320) — EXISTING MAJOR CONTOUR (5' INTERVAL)
- - - (6319) - - - EXISTING MINOR CONTOUR (1' INTERVAL)
- - - SS - - - EXISTING SANITARY SEWER LINE
- 6920 — PROPOSED MAJOR CONTOUR (5' INTERVAL)
- 6918 — PROPOSED MINOR CONTOUR (1' INTERVAL)
- FILING BOUNDARY LINE
- - - CONST BOUNDARY/LIMITS OF DISTURBANCE
- ☁ EXISTING VEGETATION (TREES/SHRUBS)
- x L.P./H.P. LOW POINT/HIGH POINT
- EXISTING FLOW DIRECTION ARROW
- 3:1 FLOW DIRECTION & SLOPE
- FLOW DIRECTION ARROW/EMERGENCY OVERFLOW
- ▨ REFRAIN FROM GRADING
- ▨ TEMPORARY RIP-RAP
- ⊙ SBB STRAW BALE DITCH CHECK
- ⊙ B EARTH BERM
- ⊙ VTC VEHICLE TRACKING CONTROL
- ⊙ SB TEMPORARY SEDIMENT BASIN
- ⊙ SP STOCK PILE STAGING
- ⊙ SSA STABILIZED STATION AREA
- ⊙ ED/DS EARTH DIKES & DRAINAGE SWALES

It is the developer's responsibility to identify any environmental constraints and requirements such as wetlands, wildlife, etc.

Provide the calculation for the spillway in the drainage letter.

### SEDIMENT BASIN TABLE

SEDIMENT BASIN NO.	REQ'D VOLUME C.F.	BASIN WIDTH FT.	BASIN LENGTH FT.	ANTIC. MAX WATER HT. FT.	SPILLWAY LENGTH FT.	HOLE DIA. IN.	ROWS OF HOLES IN STANDPIPE
1	108,000	110.0	220.0	4	44	2 3/8	2

Detail calls for every 4" on center interval for the rows. Revise header to "Number of columns" if the intent is to have two holes per column.

Does not meet the perforation sizing for Figure SB-2 of the DCM Vol 2.

### ADDITIONAL NOTES:

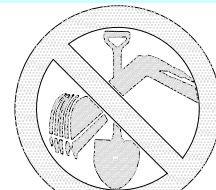
1. STAGING AREA TO BE DETERMINED BY CONTRACTOR IN THE FIELD. THE LOCATIONS SHALL BE DELINEATED ON THIS PLAN BY THE CONTRACTOR.
2. THE EROSION CONTROL DELINEATED ON THIS PLAN SHALL BE REGULARLY UPDATED BY THE CONTRACTOR.
3. A FLOODPLAIN DEVELOPMENT PERMIT IS REQUIRED TO CONDUCT THE WORK SHOWN WITHIN THE 100 YEAR FLOODPLAIN.
4. PROPOSED SLOPES SHALL BE 4:1 OR LESS.
5. THE CONTRACTOR SHALL OBTAIN A COPY OF THE GEOTECHNICAL ENGINEERING REPORT AND KEEP A COPY ONSITE DURING ALL EARTHWORK OPERATIONS.
6. THE CONTRACTOR SHALL PROVIDE SUFFICIENT BUFFER BETWEEN THE LIMITS OF DISTURBANCE AND AREAS IN WHICH NO GRADING SHALL OCCUR TO MAKE SUFFICIENT TIE IN BETWEEN THE PROPOSED GRADE AND EXISTING GRADE WHICH MAY NOT BE CLEARLY ILLUSTRATED ON THIS PLAN.

Remove roadway design data that is not applicable to this drawing

Add PCD File No.: CDR-18-009

### STATEMENT:

THE CITY OF COLORADO SPRINGS RECOGNIZES THE DESIGN ENGINEER AS HAVING RESPONSIBILITY FOR THE DESIGN. THE CITY HAS LIMITED ITS SCOPE OF REVIEW ACCORDINGLY. RESUBMITTAL REQUIRED IF CONSTRUCTION HAS NOT COMMENCED WITHIN 180 DAYS AFTER APPROVAL DATE.

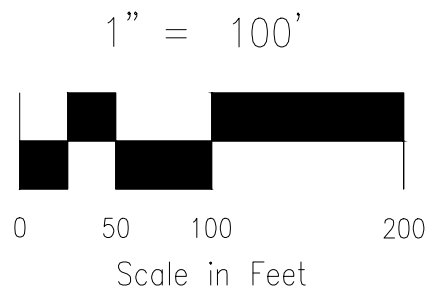


FOR LOCATING & MARKING GAS, ELECTRIC, WATER & TELEPHONE LINES  
FOR BURIED UTILITY INFORMATION  
48 HRS BEFORE YOU DIG  
CALL 1-800-922-1987

### DESIGN DATA:

SIDEWALKS: WIDTH 5'  
LOCATION: Attached ☐  
CURB TYPE 1 ☐  
ROW WIDTH 50' EOP-EOP 30'  
STREET TYPE RESIDENTIAL HVEEM  
DESIGN SPEED 25 MPH  
ASPHALT THICKNESS: AC Surface  
AB Base  
AGG. BASE THICKNESS: Class 6  
Class 5  
Class 2

FOR LOCATING & MARKING GAS, ELECTRIC, WATER & TELEPHONE LINES  
FOR BURIED UTILITY INFORMATION  
48 HRS BEFORE YOU DIG  
CALL 1-800-922-1987



MEADOWBROOK TOWNHOMES - DIRT BORROW SITE

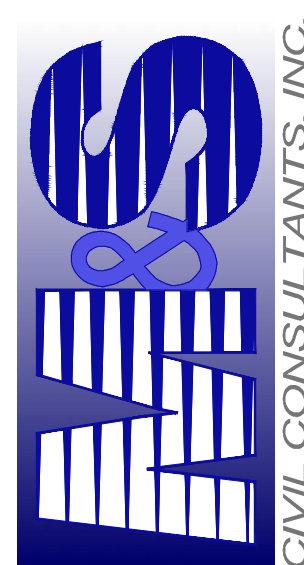
GRADING & EROSION CONTROL PLAN

PROJECT NO. 43-089A  
DATE: 08/08/2018  
SCALE: HORIZONTAL: 1"=50' VERTICAL: 1"=5'

SHEET 2 OF 3

GR2

20 BOULDER CRESCENT, SUITE 110  
COLORADO SPRINGS, CO 80903  
PHONE: 719.555.5485



FOR AND ON BEHALF OF  
W&S CIVIL CONSULTANTS, INC.

VERIL A. SANCHEZ, COLORADO P.E. NO. 37160

REVISIONS: NO. DATE: BY: DESCRIPTION:

THE ENGINEER PREPARED THESE PLANS WILL NOT BE RESPONSIBLE FOR UNAUTHORIZED CHANGES TO OR USES OF THESE PLANS. ALL CHANGES TO THE PLANS MUST BE IN WRITING AND MUST BE APPROVED BY THE PREPARER OF THESE PLANS.

CAUTION



## SM-4

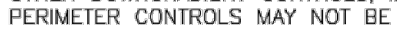


November 2010	Urban Drainage and Flood Control District Urban Storm Drainage Criteria Manual Volume 3	VTC-3
---------------	--	-------

### Straw Bale Barrier (SBB)



SBB-2      Urban Drainage and Flood Control District      November 2010  
 Urban Storm Drainage Criteria Manual Volume 3

**MM-2**

November 2010	Urban Drainage and Flood Control District Urban Storm Drainage Criteria Manual Volume 3	SP-3
---------------	--	------

1. SEEDBED PREPARATION

THE SEEDBED SHOULD BE WELL-SETTLED AND FIRM, BUT FRAGILE ENOUGH TO BE EASILY CRUMPED AND PLACED AT THE SPECIFIED DEPTHS. COMPETITIVE STANDS OF WEEDS THAT ARE PRESENT BEFORE SEEDING MUST BE CONTROLLED BY SHALLOW TILLAGE OR BY APPLICATION OF HERBICIDES. SOILS THAT HAVE BEEN OVER-COMPACTED BY TRAFFIC OR EQUIPMENT, ESPECIALLY WHEN THEY SHOULD BE TILED TO BREAK UP ROOTING-RESTRICTIVE LAYERS, THAN HARROWED, ROLLED, OR PACKED TO PREPARE THE REQUIRED FIRM SEEDBED.
2. FERTILIZER

FERTILIZER SHOULD BE APPLIED AT A RATE OF 50 POUNDS OF AVAILABLE NITROGEN PER ACRE AND 40 POUNDS OF AVAILABLE PHOSPHATE PER ACRE. THE TIMING OF APPLICATION SHOULD BE IMMEDIATELY PRIOR TO SEEDING, AT THE TIME OF SEEDING, OR IMMEDIATELY FOLLOWING SEEDING, DEPENDING ON THE KIND OF FERTILIZER AND TYPE OF EQUIPMENT USED.
3. SEEDING

SEED SHOULD BE PLANTED WITH A GRASS DRILL ON ALL SLOPES OF 33% (3:1) OR FLATTER. SEED MAY BE BROADCAST BY HAND, BY MECHANICAL SEEDER, OR BY HYDRAULIC EQUIPMENT ON AREAS THAT ARE SMALL, TOO STEEP, OR NOT ACCESSIBLE FOR SEED DRILL OPERATIONS. SEED PLANTED WITH A DRILL SHOULD BE COVERED WITH SOIL TO A DEPTH OF 1/4 TO 3/4 INCH. IF A DRILL IS NOT AVAILABLE, SEED SHOULD BE INCORPORATED INTO THE SOIL SURFACE, NOT TO EXCEED A DEPTH OF 3/4 INCH, BY RAKING, HARROWING, OR OTHER PROVEN METHOD.
4. MULCHING

THE TIMING OF SEEDING IS FROM OCTOBER 15TH - MAY 31ST. SEED PLANTED IN THE LATE FALL WILL REMAIN DORMANT UNTIL SPRING, WHEN IT WILL GERMINATE.
5. MULCHING

SUDDING AREAS SHOULD BE MULCHED TO CONSERVE MOISTURE; PREVENT SURFACE COMPACTION OR CRUSTING; REDUCE RUNOFF AND EROSION; CONTROL INSECTS; AND HELP ESTABLISH PLANT COVER.
6. MULCHING

NATIVE GRASS OR STRAW SHOULD BE APPLIED AT A RATE OF 4,000 POUNDS PER ACRE AND CRIMPED INTO THE GROUND. ON SLOPES GREATER THAN 3:1, AN AGRONOMY BLANKET SHOULD BE USED.

EROSION CONTROL MEASURES SHALL BE IMPLEMENTED IN A MANNER THAT WILL PROTECT PROPERTIES AND PUBLIC FACILITIES FROM THE ADVERSE EFFECTS OF EROSION. EROSION IS THE RESULT OF CONSTRUCTION AND EARTHWORK ACTIVITIES WITHIN THE PROJECT SITE.

1. PRIOR TO START OF GRADING OPERATIONS, LOCATE AND SET THE SILT FENCE AND VEHICLE TRACKING CONTROL AS SHOWN ON THE EROSION CONTROL PLAN.
2. THE SILT FENCE SHALL BE KEPT IN PLACE AND MAINTAINED UNTIL EROSION AND SEDIMENTATION POTENTIAL IS MITIGATED. REMOVAL OF SILT AND SEDIMENT COLLECTED BY THE SILT FENCES IS REQUIRED ONCE IT REACHES HALF THE HEIGHT OF THE SILT FENCES.
3. EROSION CONTROL DEVICES SHOULD BE CHECKED AFTER EVERY STORM OR NOT MORE THAN EVERY 14 DAYS. REPAIRS OR REPLACEMENT SHOULD BE MADE AS NECESSARY TO MAINTAIN PROPER PROTECTION.

SOIL EROSION CONTROL MEASURES FOR ALL SLOPES, CHANNELS, DITCHES, OR AREAS (SIDE LANE) AREA SHALL BE MAINTAINED UNTIL THE NEXT-ONE (1) YEAR CALENDAR DATES. AFTER GRADING, OR FIELD EARTH DISTURBANCE HAS BEEN COMPLETED, DISTURBED AREAS AND STOCKPILES WHICH ARE NOT AT THE FINAL GRADE BUT WILL REMAIN DORMANT FOR LONGER THAN 30 DAYS SHALL BE MAINTAINED UNTIL THE NEXT-ONE (1) YEAR CALENDAR DATES. AN AREA THAT IS GOING TO REMAIN IN AN INTERIM STATE FOR MORE THAN 60 DAYS SHALL ALSO BE MAINTAINED. ALL TEMPORARY SOIL EROSION CONTROL MEASURES AND BMP'S SHALL BE MAINTAINED UNTIL PERMANENT SOIL EROSION CONTROL MEASURES ARE IMPLEMENTED.

SEE URBAN DRAINAGE CRITERIA MANUAL (VOL. 3)  
FOR INSTALLATION AND MAINTENANCE (TYP)

## SC-7



August 2013	Urban Drainage and Flood Control District Urban Storm Drainage Criteria Manual Volume 3	SB-5
-------------	--	------



ROLLER COMPACT TEMPORARY BERM USING A COMPACTION WHEEL OR SHEEPSFOOT ROLLER TO CREATE A FIRM STABLE EMBANKMENT. DIMENSIONS SHOWN ARE POST COMPACTION. COMPACTION TESTING IS NOT REQUIRED FOR THIS ITEM.

SECTION A-A  
NTS

1. PRACTICE NO. & NAME \_\_\_\_\_ 342 - CRITICAL AREA TREATMENT  
RANGE SITE \_\_\_\_\_ SANDY FOOTHILLS

1. PRACTICE NO. & NAME \_\_\_\_\_ 342 - CRITICAL AREA TREATMENT  
RANGE SITE \_\_\_\_\_ SANDY FOOTHILLS
2. PLANNED: \_\_\_\_\_

SEEDING PREP:

- A METHOD \_\_\_\_\_  
B DATES \_\_\_\_\_ OCT 15 - MAY 31  
C CLEAN TILLED \_\_\_\_\_ XX  
FIRM SEEDBED \_\_\_\_\_ XX  
STUBBLE COVER \_\_\_\_\_  
INTERSEED \_\_\_\_\_  
OTHER \_\_\_\_\_

## SEEDING OPERATION

- A METHOD: \_\_\_\_\_ XX  
 DRILL \_\_\_\_\_  
 INTERSEED \_\_\_\_\_  
 BROADCAST \_\_\_\_\_  
 B DRILL SPACING \_\_\_\_\_ 6-12"  
 TYPE \_\_\_\_\_ GRASS W/AGITATOR  
 C DATE \_\_\_\_\_ OCT 15 - MAY 31  
 D PLANTING DEPTH \_\_\_\_\_ 1/4 - 1/2"

WEED CONTROL:

- POUNDS ACTUAL PER  
ACRE N2 \_\_\_\_\_  
(AVAILABLE)  
P205 \_\_\_\_\_  
K \_\_\_\_\_
- MOWING \_\_\_\_\_  
CHEMICAL \_\_\_\_\_  
DATES \_\_\_\_\_  
SEE S.C.S. FOR RECOMMENDATIONS  
AT HERBICIDE APPLICATION TIME.

MULCH  
KIND

- |                       |                   |
|-----------------------|-------------------|
| AMOUNT _____          | 4,000 POUNDS/ACRE |
| HOW APPLIED _____     | N/A               |
| HOW ANCHORED _____    | CRIMPED           |
| ANCHORAGE DEPTH _____ | 4"                |

SEED:

VARIETY	SPECIES	REQUIRED PLS RATES PER ACRES (100%)
EL RENO	SIDEGRASS GRAMMA	3.0
BARTON	WESTERN WHEATGRASS	2.5
NATIVE	SLENDER WHEATGRASS	2.0
PASTURA	LITTLE BLUESTEM	2.0
NATIVE	SAND DROPSIED	0.5
NEBRASKA 28	SWITCH GRASS	3.0
MORPHA	WEEPING LOVE GRASS	1.0
(2) % OF SPECIES IN MIXTURE	PLS SEEDING RATE PER SPECIES/ACRE (1) X (2) = (3)	(4) PLANNED ACRE (3) X (4)
21	0.63	75.8
18	0.45	75.8
14	0.28	75.8
14	0.28	75.8
4	0.02	75.8
21	0.63	75.8
7	0.07	75.8
		46.8
		34.11
		21.2
		21.2
		1.5
		47.8
		5.3

## EC-10



---

November 2010
Urban Drainage and Flood Control District
ED/DS-3

Urban Storm Drainage Criteria Manual Volume 3



FOR LOCATING  
& MARKING  
GAS,  
ELECTRIC,  
WATER &  
TELEPHONE  
LINES

160 FOR AND ON  
BEHALF OF  
M&S CIVIL  
CONSULTANTS,  
INC.

VIRGIL A. SANCHEZ, COLORADO P.E. NO. 37160

REVISIONS:

THE ENGINEER PREPARING THESE PLANS WILL NOT BE RESPONSIBLE, OR LIABLE FOR, UNAUTHORIZED CHANGES TO OR USES OF THESE PLANS. ALL CHANGES TO THE PLANS MUST BE IN WRITING AND MUST BE APPROVED BY THE PREPARER OF THESE PLANS.

#### CAUTION