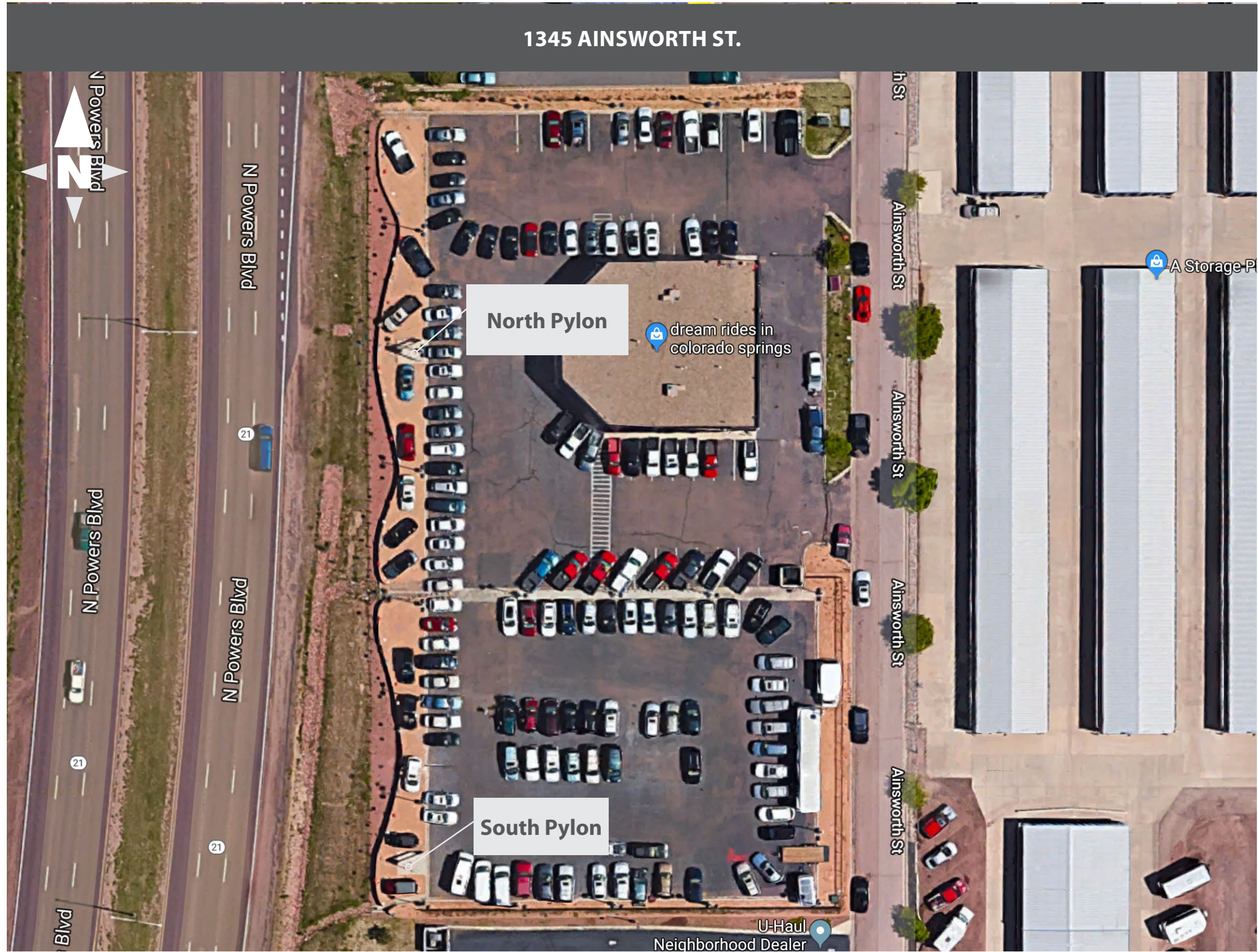


Site plan must show the property lines and the distance the signs are from the property lines,



CORPORATE IDENTIFICATION SOLUTIONS

CUSTOMER
JD Byrider

SITE NUMBER
N/A

LOCATION
Colorado Springs, CO

ACCOUNT REP
Ben DeHayes

DRAWN BY
JR

DATE
06/14/18

REVISION
00

SCALE
NTS

CORPORATE ID SOLUTIONS
5563 N Elston Ave.
Chicago, IL 60630
P: 773-763-9600 | F: 773-763-9606
www.CorporateIDSolutions.com

CUSTOMER ACCEPTANCE

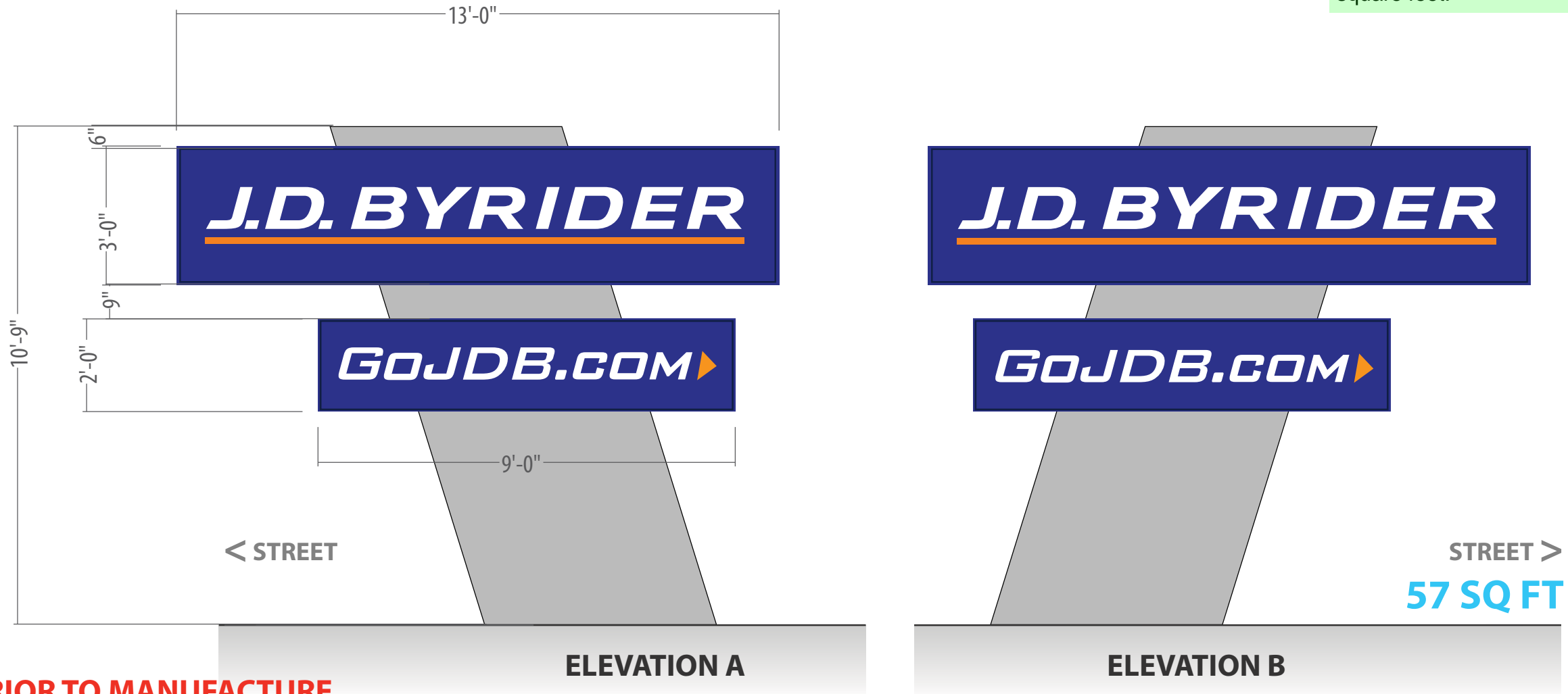
THIS DRAWING IS THE PROPERTY OF CORPORATE IDENTIFICATION SOLUTIONS, INC. CHICAGO, ILLINOIS, AND CONTAINS PROPRIETARY AND CONFIDENTIAL INFORMATION. THIS DRAWING IS TRANSFERRED TO THE CUSTOMERS AND SUPPLIERS OF CORPORATE IDENTIFICATION SOLUTIONS, INC BY WAY OF LOAN. THIS DRAWING MAY NOT BE COPIED OR REPRODUCED, IN WHOLE OR IN PART, NOR MAY IT OR THE INFORMATION IT CONTAINS BE DISCLOSED OR TRANSFERRED TO ANY OTHER PARTY OR PERSONS WITHOUT THE PRIOR WRITTEN CONSENT OF CORPORATE IDENTIFICATION SOLUTIONS, INC.

SIGNATURE _____ DATE _____

NORTH PYLON



Maximum size per sign allowed by the code is 50sqft. Please review 6.2.1(E)(c) maximum size is 2 square feet for each linear foot of the building wall closest to the freestanding sign or 40 square feet, whichever is smaller, then under is a 25% increase for being located along an arterial or expressway increasing 10 feet if the minimum size sign is 40 square feet.



VERIFY IN FIELD PRIOR TO MANUFACTURE



CORPORATE IDENTIFICATION SOLUTIONS

CUSTOMER
JD Byrider

SITE NUMBER
N/A

LOCATION
Colorado Springs, CO

ACCOUNT REP
Ben DeHayes

DRAWN BY
JR

DATE
06/14/18

REVISION
00

SCALE
NTS

CORPORATE ID SOLUTIONS
5563 N Elston Ave.
Chicago, IL 60630
P: 773-763-9600 | F: 773-763-9606
www.CorporateIDSolutions.com

CUSTOMER ACCEPTANCE

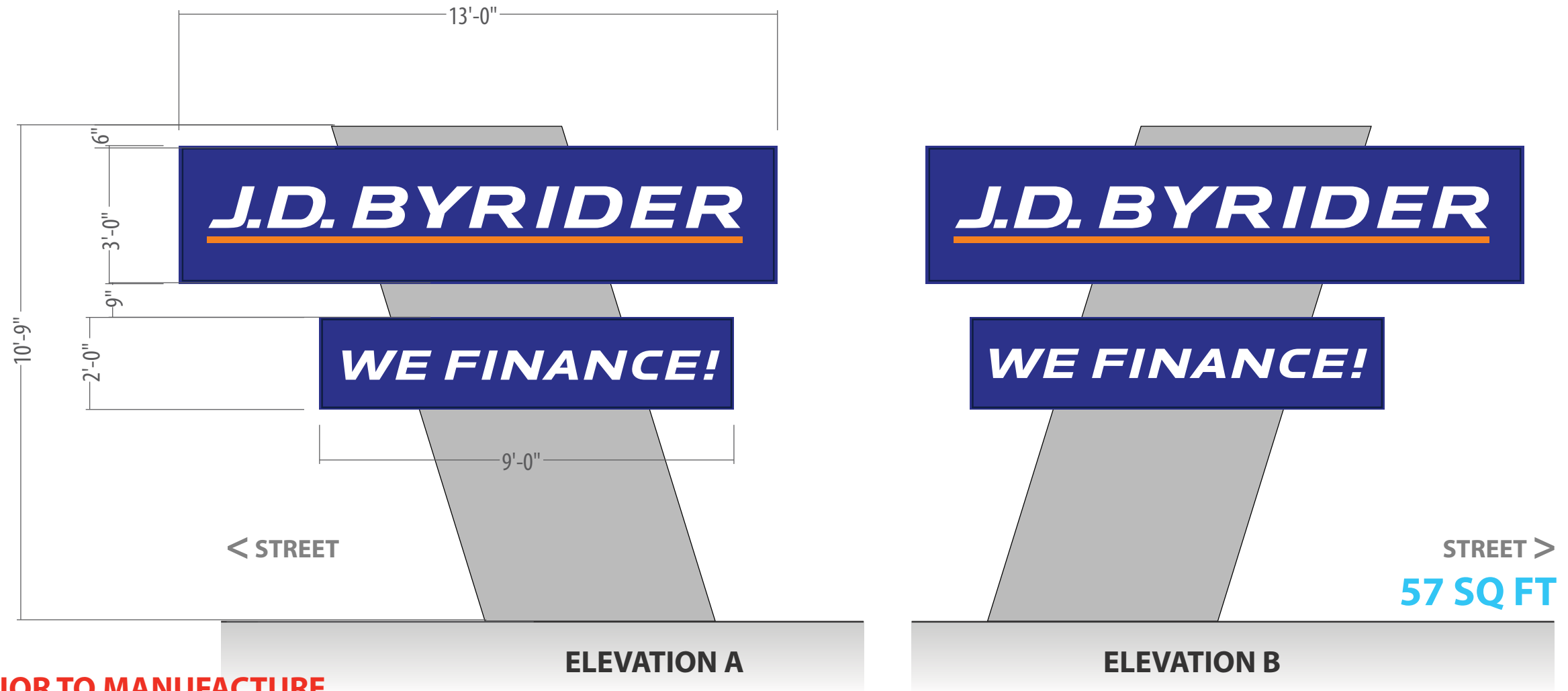
THIS DRAWING IS THE PROPERTY OF CORPORATE IDENTIFICATION SOLUTIONS, INC. CHICAGO, ILLINOIS, AND CONTAINS PROPRIETARY AND CONFIDENTIAL INFORMATION. THIS DRAWING IS TRANSFERRED TO THE CUSTOMERS AND SUPPLIERS OF CORPORATE IDENTIFICATION SOLUTIONS, INC BY WAY OF LOAN. THIS DRAWING MAY NOT BE COPIED OR REPRODUCED, IN WHOLE OR IN PART, NOR MAY IT OR THE INFORMATION IT CONTAINS BE DISCLOSED OR TRANSFERRED TO ANY OTHER PARTY OR PERSONS WITHOUT THE PRIOR WRITTEN CONSENT OF CORPORATE IDENTIFICATION SOLUTIONS, INC.

SIGNATURE _____ DATE _____

SOUTH PYLON



Maximum size per sign allowed by the code is 50sqft. Please review 6.2.1(E)(c) maximum size is 40 square feet when no building is present, then under is a 25% increase for being located along an arterial or expressway increasing 10 feet if the minimum size sign is 40 square feet.



VERIFY IN FIELD PRIOR TO MANUFACTURE



CORPORATE IDENTIFICATION SOLUTIONS

CUSTOMER
JD Byrider

SITE NUMBER
N/A

LOCATION
Colorado Springs, CO

ACCOUNT REP
Ben DeHayes

DRAWN BY
JR

DATE
06/14/18

REVISION
00

SCALE
NTS

CORPORATE ID SOLUTIONS
5563 N Elston Ave.
Chicago, IL 60630
P: 773-763-9600 | F: 773-763-9606
www.CorporateIDSolutions.com

CUSTOMER ACCEPTANCE

THIS DRAWING IS THE PROPERTY OF CORPORATE IDENTIFICATION SOLUTIONS, INC. CHICAGO, ILLINOIS, AND CONTAINS PROPRIETARY AND CONFIDENTIAL INFORMATION. THIS DRAWING IS TRANSFERRED TO THE CUSTOMERS AND SUPPLIERS OF CORPORATE IDENTIFICATION SOLUTIONS, INC BY WAY OF LOAN. THIS DRAWING MAY NOT BE COPIED OR REPRODUCED, IN WHOLE OR IN PART, NOR MAY IT OR THE INFORMATION IT CONTAINS BE DISCLOSED OR TRANSFERRED TO ANY OTHER PARTY OR PERSONS WITHOUT THE PRIOR WRITTEN CONSENT OF CORPORATE IDENTIFICATION SOLUTIONS, INC.

SIGNATURE _____ DATE _____

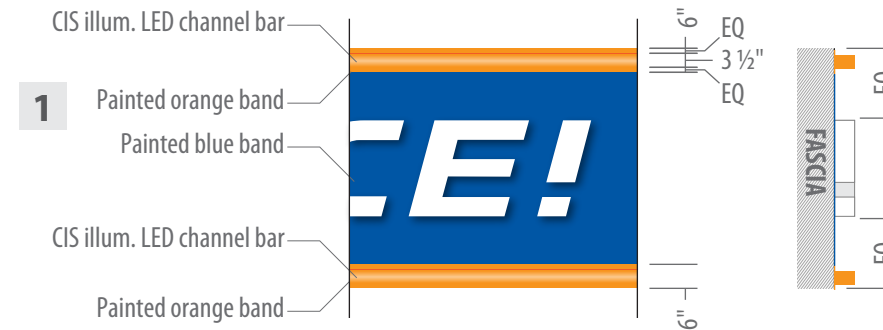


EXISTING

Each Wall length required on site plan to verify signs are not over 1.5 square feet per linear foot of wall frontage.



PROPOSED



ILLUMINATED LED CHANNEL BAR

2 *GOJDB.COM* ▶

GOJDB.COM ILLUMINATED LETTERS QTY (1)

22" x 21'-1 3/4": 38.76 SQ FT

3 *J.D. BYRIDER*

J.D. BYRIDER ILLUM. CHANNEL LETTERS QTY (1)

22" x 23'-6": 43.25 SQ FT

4 *WE FINANCE!*

WE FINANCE! ILLUM. CHANNEL LETTERS QTY (1)

22" x 23'- 11 1/8": 43.77 SQ FT

VERIFY IN FIELD PRIOR TO MANUFACTURE



CORPORATE IDENTIFICATION SOLUTIONS

CUSTOMER
JD Byrider
SITE NUMBER
N/A

LOCATION
Colorado Springs, CO
ACCOUNT REP
Ben DeHayes

DRAWN BY
JR
DATE
06/14/18

REVISION
00
SCALE
NTS

CORPORATE ID SOLUTIONS
5563 N Elston Ave.
Chicago, IL 60630
P: 773-763-9600 | F: 773-763-9606
www.CorporateIDSolutions.com

CUSTOMER ACCEPTANCE
THIS DRAWING IS THE PROPERTY OF CORPORATE IDENTIFICATION SOLUTIONS, INC. CHICAGO, ILLINOIS, AND CONTAINS PROPRIETARY AND CONFIDENTIAL INFORMATION. THIS DRAWING IS TRANSFERRED TO THE CUSTOMERS AND SUPPLIERS OF CORPORATE IDENTIFICATION SOLUTIONS, INC BY WAY OF LOAN. THIS DRAWING MAY NOT BE COPIED OR REPRODUCED, IN WHOLE OR IN PART, NOR MAY IT OR THE INFORMATION IT CONTAINS BE DISCLOSED OR TRANSFERRED TO ANY OTHER PARTY OR PERSONS WITHOUT THE PRIOR WRITTEN CONSENT OF CORPORATE IDENTIFICATION SOLUTIONS, INC.
SIGNATURE _____ DATE _____