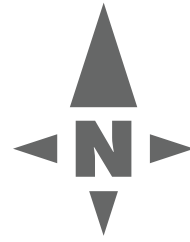


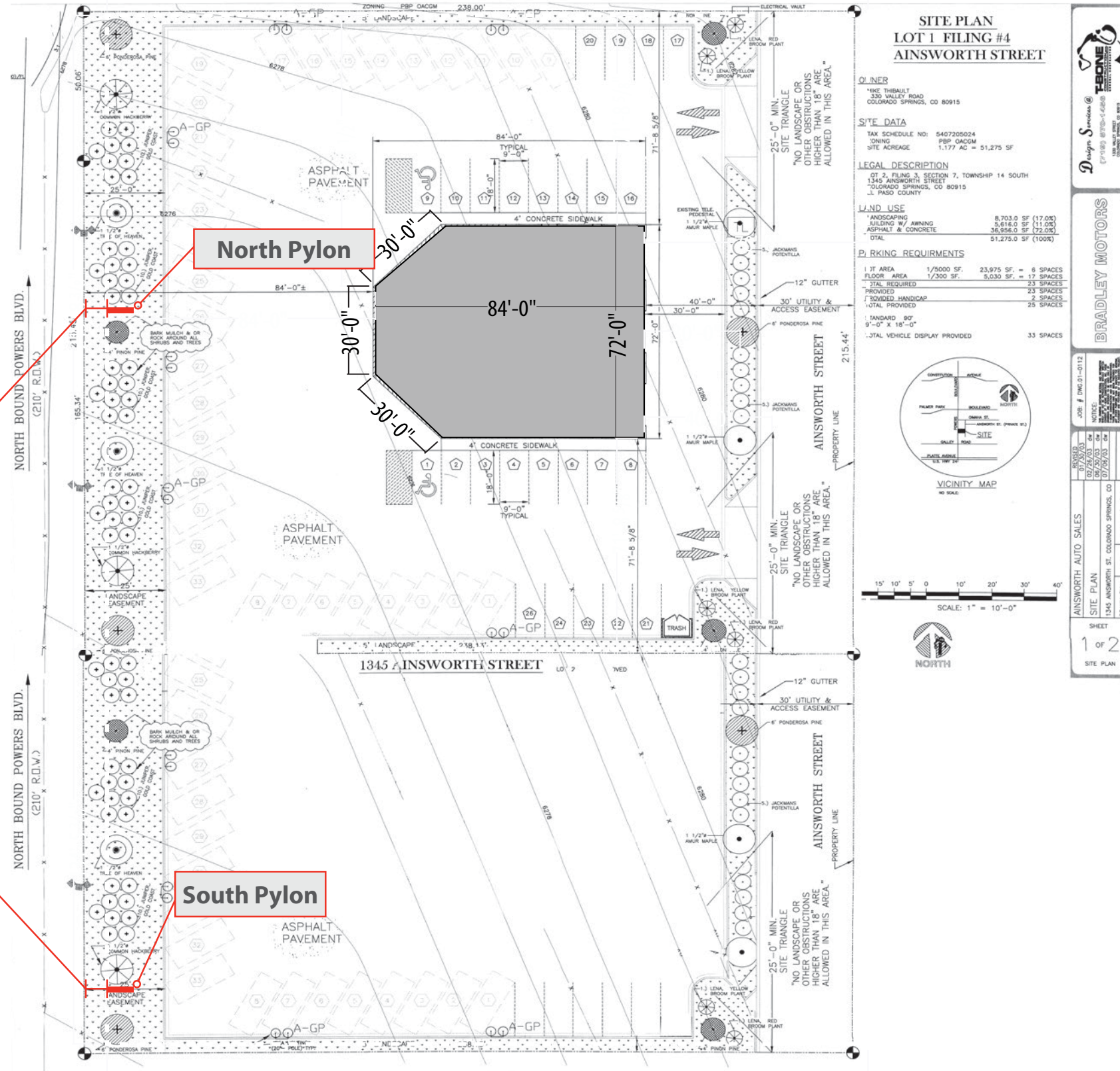
1345 AINSWORTH ST.



Min. Setback Allowed Per Zoning Ordinance

This needs to be the actual measurement from the property line to the sign

Min. Setback Allowed Per Zoning Ordinance



CUSTOMER
 JD Byrider

SITE NUMBER
 N/A

LOCATION
 Colorado Springs, CO

ACCOUNT REP
 Ben DeHayes

DRAWN BY
 JR

DATE
 08/31/18

REVISION
 02

SCALE
 NTS

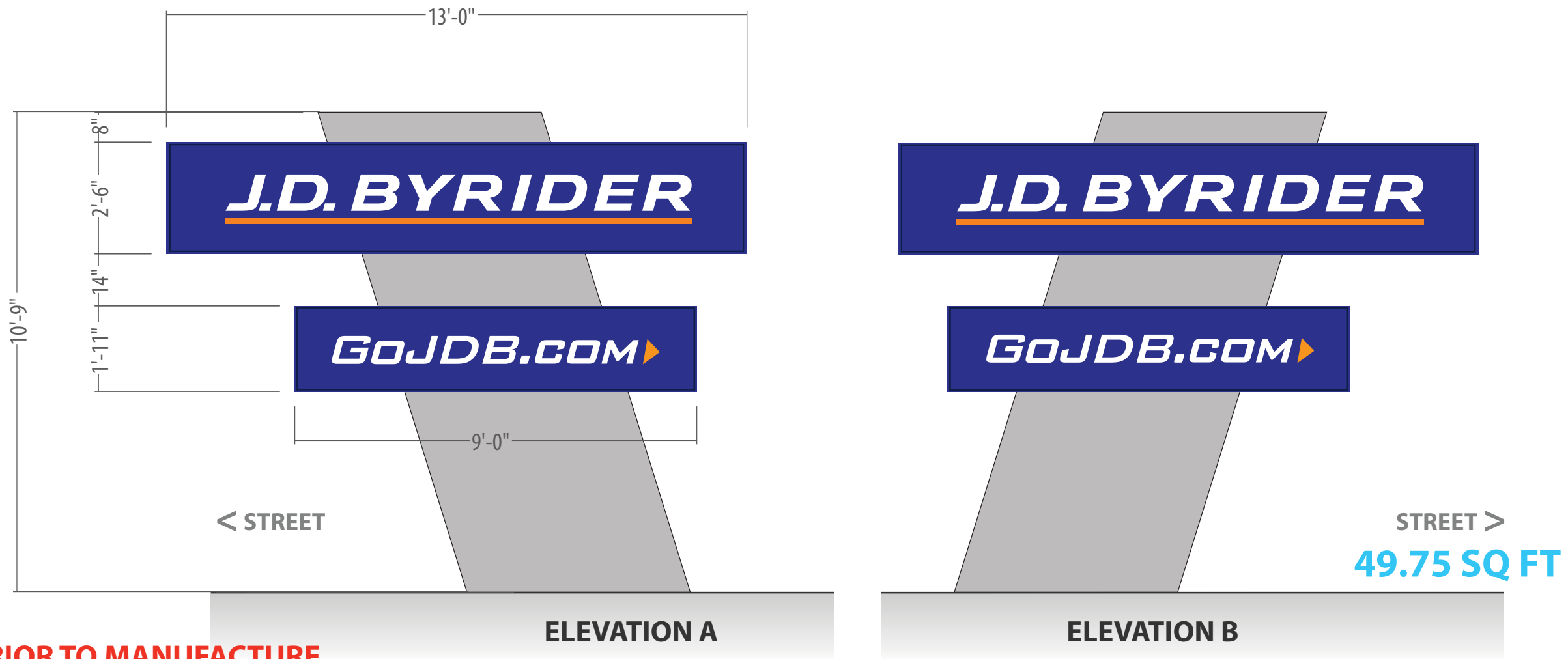
CORPORATE ID SOLUTIONS
 5563 N Elston Ave.
 Chicago, IL 60630
 P: 773-763-9600 | F: 773-763-9606
 www.CorporateIDSolutions.com

CUSTOMER ACCEPTANCE

THIS DRAWING IS THE PROPERTY OF CORPORATE IDENTIFICATION SOLUTIONS, INC. CHICAGO, ILLINOIS, AND CONTAINS PROPRIETARY AND CONFIDENTIAL INFORMATION. THIS DRAWING IS TRANSFERRED TO THE CUSTOMERS AND SUPPLIERS OF CORPORATE IDENTIFICATION SOLUTIONS, INC BY WAY OF LOAN. THIS DRAWING MAY NOT BE COPIED OR REPRODUCED, IN WHOLE OR IN PART, NOR MAY IT OR THE INFORMATION IT CONTAINS BE DISCLOSED OR TRANSFERRED TO ANY OTHER PARTY OR PERSONS WITHOUT THE PRIOR WRITTEN CONSENT OF CORPORATE IDENTIFICATION SOLUTIONS, INC.

SIGNATURE _____ **DATE** _____

NORTH PYLON



VERIFY IN FIELD PRIOR TO MANUFACTURE



CORPORATE IDENTIFICATION SOLUTIONS

CUSTOMER
JD Byrider

SITE NUMBER
N/A

LOCATION
Colorado Springs, CO

ACCOUNT REP
Ben DeHayes

DRAWN BY
JR

DATE
08/31/18

REVISION
02

SCALE
NTS

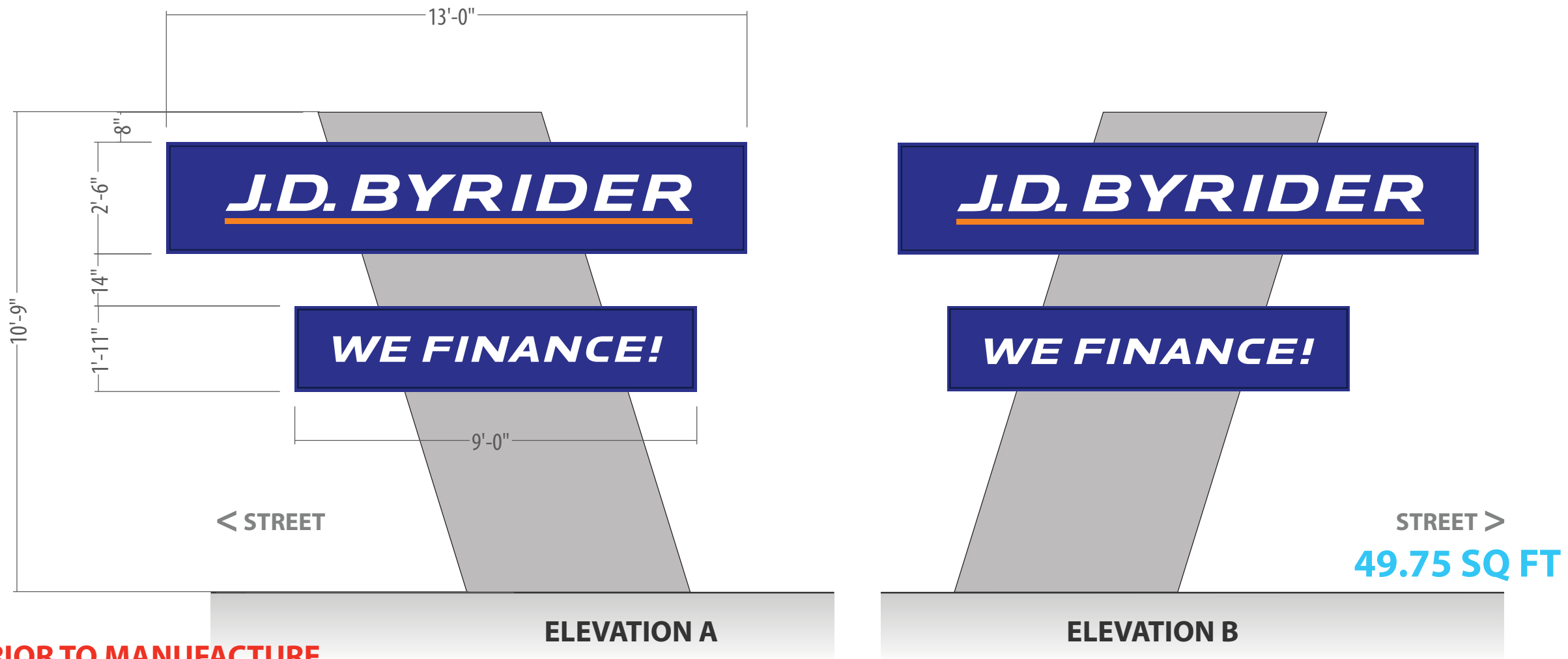
CORPORATE ID SOLUTIONS
5563 N Elston Ave.
Chicago, IL 60630
P: 773-763-9600 | F: 773-763-9606
www.CorporateIDSolutions.com

CUSTOMER ACCEPTANCE

THIS DRAWING IS THE PROPERTY OF CORPORATE IDENTIFICATION SOLUTIONS, INC. CHICAGO, ILLINOIS, AND CONTAINS PROPRIETARY AND CONFIDENTIAL INFORMATION. THIS DRAWING IS TRANSFERRED TO THE CUSTOMERS AND SUPPLIERS OF CORPORATE IDENTIFICATION SOLUTIONS, INC BY WAY OF LOAN. THIS DRAWING MAY NOT BE COPIED OR REPRODUCED, IN WHOLE OR IN PART, NOR MAY IT OR THE INFORMATION IT CONTAINS BE DISCLOSED OR TRANSFERRED TO ANY OTHER PARTY OR PERSONS WITHOUT THE PRIOR WRITTEN CONSENT OF CORPORATE IDENTIFICATION SOLUTIONS, INC.

SIGNATURE _____ DATE _____

SOUTH PYLON



VERIFY IN FIELD PRIOR TO MANUFACTURE



CORPORATE IDENTIFICATION SOLUTIONS

CUSTOMER
JD Byrider

SITE NUMBER
N/A

LOCATION
Colorado Springs, CO

ACCOUNT REP
Ben DeHayes

DRAWN BY
JR

DATE
08/31/18

REVISION
02

SCALE
NTS

CORPORATE ID SOLUTIONS
5563 N Elston Ave.
Chicago, IL 60630
P: 773-763-9600 | F: 773-763-9606
www.CorporateIDSolutions.com

CUSTOMER ACCEPTANCE

THIS DRAWING IS THE PROPERTY OF CORPORATE IDENTIFICATION SOLUTIONS, INC. CHICAGO, ILLINOIS, AND CONTAINS PROPRIETARY AND CONFIDENTIAL INFORMATION. THIS DRAWING IS TRANSFERRED TO THE CUSTOMERS AND SUPPLIERS OF CORPORATE IDENTIFICATION SOLUTIONS, INC BY WAY OF LOAN. THIS DRAWING MAY NOT BE COPIED OR REPRODUCED, IN WHOLE OR IN PART, NOR MAY IT OR THE INFORMATION IT CONTAINS BE DISCLOSED OR TRANSFERRED TO ANY OTHER PARTY OR PERSONS WITHOUT THE PRIOR WRITTEN CONSENT OF CORPORATE IDENTIFICATION SOLUTIONS, INC.

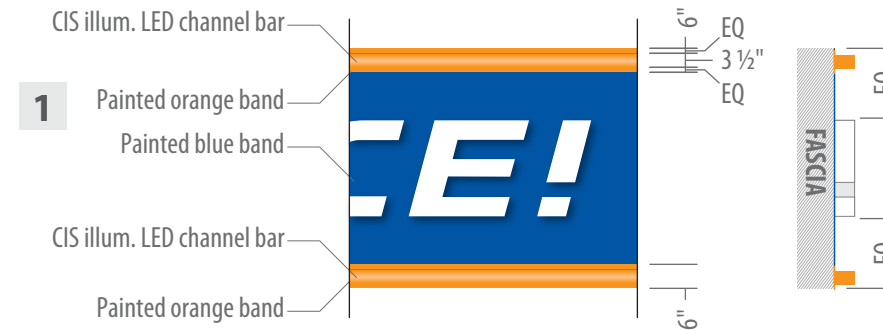
SIGNATURE _____ DATE _____



EXISTING



PROPOSED



ILLUMINATED LED CHANNEL BAR

2 *GOJDB.COM* ▶

GOJDB.COM ILLUMINATED LETTERS QTY (1)

22" x 21'-1 3/4": 38.76 SQ FT

3 *J.D. BYRIDER*

J.D. BYRIDER ILLUM. CHANNEL LETTERS QTY (1)

22" x 23'-6": 43.25 SQ FT

4 *WE FINANCE!*

WE FINANCE! ILLUM. CHANNEL LETTERS QTY (1)

22" x 23'- 11 1/8": 43.77 SQ FT

**VERIFY IN FIELD PRIOR TO MANUFACTURE
EACH ELEVATION ALLOWS FOR 45 SQ FT**



**CORPORATE
IDENTIFICATION
SOLUTIONS**

CUSTOMER
JD Byrider
SITE NUMBER
N/A

LOCATION
Colorado Springs, CO
ACCOUNT REP
Ben DeHayes

DRAWN BY
JR
DATE
08/31/18

REVISION
02
SCALE
NTS

CORPORATE ID SOLUTIONS
5563 N Elston Ave.
Chicago, IL 60630
P: 773-763-9600 | F: 773-763-9606
www.CorporateIDSolutions.com

CUSTOMER ACCEPTANCE
THIS DRAWING IS THE PROPERTY OF CORPORATE IDENTIFICATION SOLUTIONS, INC. CHICAGO, ILLINOIS, AND CONTAINS PROPRIETARY AND CONFIDENTIAL INFORMATION. THIS DRAWING IS TRANSFERRED TO THE CUSTOMERS AND SUPPLIERS OF CORPORATE IDENTIFICATION SOLUTIONS, INC BY WAY OF LOAN. THIS DRAWING MAY NOT BE COPIED OR REPRODUCED, IN WHOLE OR IN PART, NOR MAY IT OR THE INFORMATION IT CONTAINS BE DISCLOSED OR TRANSFERRED TO ANY OTHER PARTY OR PERSONS WITHOUT THE PRIOR WRITTEN CONSENT OF CORPORATE IDENTIFICATION SOLUTIONS, INC.
SIGNATURE _____ DATE _____