

**STORM WATER MANAGEMENT PLAN
FOR
VOLLMER SUBSTATION WEST CIRCUIT
EL PASO COUNTY, COLORADO**

March 2026

PCD Filing No.: CDR2513

OWNER/CONTRACTOR:

MOUNTAIN VIEW ELECTRIC
11140 E Woodmen Road
Falcon, CO 80831
Samantha Sherman (719) 494-2699

PREPARED BY:

TERRA NOVA ENGINEERING, INC.
721 S. 23rd ST.
Colorado Springs, CO 80904
John Fornander, P.E. (719) 635-6422

QUALIFIED STORMWATER MANAGER/ CSWMP ADMINISTRATOR:

MOUNTAIN VIEW ELECTRIC
11140 E Woodmen Road
Falcon, CO 80831
Samantha Sherman (719) 494-2699

Job No. 2583.00

CSWMP is to be maintained on site in the construction trailer whenever work is occurring. If construction trailer is not available, another alternative must be provided.

COLORADO DISCHARGE PERMIT SYSTEM (CDPS)

TO: Site Inspector Responsible For All CDPS Requirements

The following storm water pollution management plan (SWMP) is a detailed account of the requirements for the CDPS permit. The main objective of this plan is to prevent any contamination of the storm water while construction activity is taking place.

This document must be kept at the construction site at all times and be made available to the public and any representative of the Colorado Department of Health – Water Quality Control Division, if requested.

Enclosed are temporary erosion control details for the construction site and storm sewer outfall points (Detail A). The operation and maintenance inspection record should be used as a guideline for the inspection of permanent and temporary control devices. Items to be inspected are not limited to those listed. The inspections should be made at regular intervals and before and after storm events. The inspection records must be signed and kept in this binder for no less than three (3) years.

STORM WATER MANAGEMENT PLAN FOR VOLLMER SUBSTATION WEST CIRCUIT

TABLE OF CONTENTS

Site Description & Existing Conditions	Page 5
Construction Activity and Storage	Page 6
Best Management Practices and other Controls	Page 6-7
Potential Sources of Pollution	Page 7
Implementation of Control Measures	Page 7
Materials Handling	Page 7-8
Waste Management and Disposal	Page 8
Spill Prevention and Control Plan	Page 8
Spill Prevention Best Management Practices	Page 8-9
Spill Containment Methods	Page 9-10
Spill Countermeasures	Page 11
Maintenance, Inspection and Repair	Page 12
Final Stabilization and Long-term Stormwater Management	Page 13
State Requirements That Are Not Applicable	Page 13

APPENDIX

**GENERAL LOCATION MAP
CONSTRUCTION SCHEDULE AND SEQUENCE
GENERAL PERMIT APPLICATION
CDPS GENERAL PERMIT COR400000 CERTIFICATION
OPERATION AND MAINTENANCE INSPECTION RECORD
EROSION CONTROL PLAN & DETAILS**

STORM WATER MANAGEMENT PLAN FOR VOLLMER SUBSTATION WEST CIRCUIT

SITE DESCRIPTION & EXISTING CONDITIONS

This Storm Water Management Plan for the Vollmer Substation West Circuit is an analysis of an approximately 3.40 acre area north of Woodmen Frontage Road along Brule Road and Oto Circle which is designated for the installation of underground electric utilities. The underground installation will be approximately 1.5 miles in length and will begin at the MVEA electric substation located at 9167 Mohawk Road. The installation travels west along an access road and Oto Circle for about half a mile before travelling south along Brule Road for about 1 mile mile and ending near the intersection of Brule Road and Woodmen Frontage Road. The majority of this project will be installed by open cut trenching but directional boring will be used to cross roads and some driveways. Access to the site will be achieved along Brule Road and Mohawk Road. The area to be disturbed currently consists of mostly undeveloped land. There are no stream crossings on this project.

The site is located within Section 3, in Township 13 South, Range 65 West of the 6th Principal Meridian currently within El Paso, Colorado. This site is located within the Sand Creek drainage basin. The area generally drains from the north towards the south, travelling mostly by sheet flow. From the basin drainage will follow a series of creeks until they join the Arkansas River.

The soils on this site are noted as about 25% Blakeland loamy sand (8), 5% Blakeland Fluvaquentic Haplaquolls (9), and 70% Columbine gravelly sandy loam (19). The Blakeland loamy sand and Columbine gravelly sandy loam soils are in hydrologic soil group A. Therefore, the site has low runoff potential. The existing topographic slopes for these soils range from 0% to 9%. This is relatively flat so this will lessen soil erosion potential. However, the loamy sand soils have a significant amount of sand which contains larger particles with low cohesion, making them prone to erosion. Quickly re-vegetating the site will mitigate the issues with soil erosion. The study area consists of mostly undeveloped land that has natural vegetative cover of about 50% based on a site visit and aerial photos.

CONSTRUCTION ACTIVITY AND STORAGE

No known toxic materials have been treated, stored, disposed, spilled or leaked onto the construction site. Practices to minimize contact of construction materials, equipment and vehicles within the storm water include sub-contractor cleaning and hauling of excess debris and material upon completion of work. Construction material loading and unloading, and access to such areas occur from gravel staging areas as shown or noted on the plans. Potential pollutants such as adhesives, sediment, porta potty runoff, and oil spills will also be dealt with as required. Soils are not to be tracked offsite and any soils tracked offsite should be swept up.

Before clearing and grubbing may begin the first level of BMP'S are to be installed. The Staging Area (SSA) is also to be setup with appropriate measures to protect downstream. The MVEA electric substation at 9167 Mohawk Road will be used for access to the project. Utility trenching and utility installation will then commence throughout the site. Soil erosion control measures for all slopes, channels, ditches, or any disturbed land area shall be completed within twenty-one (21) calendar days after final grading, or final earth disturbance, has been completed. Disturbed areas and stockpiles which are not at final grade but will remain dormant for longer than 30 days shall also be mulched within 21 days after interim grading. An area that is going to remain in an interim state for more than 60 days shall also be seeded. All temporary soil erosion control measures and BMPs shall be maintained until permanent soil erosion control measures are implemented. Once the installation is completed, final stabilization shall begin immediately. The temporary erosion control measures shall be removed once the site achieves final stabilization.

There will be no on-site mobile fueling. Contractor shall have the Hazardous Material emergency response number posted on the site. No concrete or asphalt batch plants are planned for the construction site. The site will be considered stabilized when all lines have been installed and site vegetation is at 70% established.

There will be approximately 3.40 acres of disturbed soil area. This area is the same as the total site area. There is no cut or fill for this project. No non-stormwater discharges are anticipated at the site. No portion of this construction site is within a designated 100-year floodplain.

BEST MANAGEMENT PRACTICES AND OTHER CONTROLS

Erosion control measures shall be implemented in a manner that will protect properties and public facilities from the adverse effects of erosion and sedimentation as a result of construction and earthwork activities.

Installation of the electric line will begin in Spring of 2026 with completion of the work anticipated to be in Fall of 2026. The 70% established vegetation is estimated to be in Spring of 2027.

Before clearing and grubbing may begin, the Staging Area (SSA) and Vehicle Tracking Control (VTC) are to be setup with appropriate measures to protect downstream. These are initial and interim BMPs. The MVEA electric substation at 9167 Mohawk Road will be used for access to the project. Mohawk Road will be cleared/swept as necessary to remove any significant sediment accumulation and prevent migration of uneven dirt clods/mud.

Throughout the project, all installed BMPs should be checked for conformance and adjusted appropriately. Information on how to install, maintain, and operate control measures are included in the detailed drawings in the appendix.

The final level of BMPs (Seeding and Mulching) shall be installed once the previous BMPs and construction are completed. This level includes any disturbed areas and stockpiles which are not at final grade, but will remain dormant for longer than 30 days to be mulched within 21 days after interim grading. All temporary soil erosion control measures and BMP'S shall be maintained until permanent soil erosion control measures are implemented and vegetation has been established to 70% on areas not to be covered with gravel. These temporary BMPS's are to be removed once the 70% of pre-disturbed levels of vegetation has been established.

POTENTIAL SOURCES OF POLLUTION

The potential sources of pollution associated with this development are:

- Disturbed and stored soils
- Vehicle tracking of sediments
- Management of contaminated soils (if exist)
- Loading and unloading operations
- Significant dust or particulate generating processes
- Onsite waste management practices (waste piles, liquid wastes, dumpsters)
- Non-industrial waste sources such as worker trash and portable toilets

- Vehicle/equipment fueling and maintenance

IMPLEMENTATION OF CONTROL MEASURES

BMP design specifications and implementation information can be found in the UDFCD BMP Description Sheets included in the Appendix. This project does not rely on control measures owned or operated by another entity. The control measures include a stabilized staging area at the electric substation access off of Mohawk Road. Also included are seeding and mulching used on all disturbed dirt areas of the site. Temporary micropiles will be used throughout the site in place of a larger soil stockpile.

MATERIALS HANDLING

All construction materials shall be handled in a manner to minimize the chance of stormwater contamination. Additional info is included in the Spill Prevention and Control Plan section.

WASTE MANAGEMENT AND DISPOSAL

All waste and debris created by construction activities at the site shall be disposed of in compliance with all laws, regulations, and ordinances of the federal, state and local agencies. Waste disposal bins should be checked weekly for leaks and overflowing capacity and should be emptied when they reach 75% of capacity. Vehicle tracking is provided to prevent off site soil tracking.

SPILL PREVENTION AND CONTROL PLAN

The Site Superintendent will act as the point of contact for any spill that occurs at this jobsite. The Construction Manager will be responsible for implementation of prevention practices, spill containment / cleanup, worker training, reporting and complete documentation in the event of a spill. The Site Superintendent shall immediately notify the Owner, /Construction Manager, State and the Local Fire Department in addition to the legally required Federal, State, and Local reporting channels (including the National Response Center, 800.424.8802) if a reportable quantity is released to the environment.

SPILL PREVENTION BEST MANAGEMENT PRACTICES

This section describes spill prevention methods Best Management Practices (BMP) that will be practiced to eliminate spills before they happen.

Equipment Staging and Maintenance

- Store and maintain equipment in a designated area.
- Keep spill kits readily accessible.
- Check incoming vehicles for leaking oil and fluids.
- Inspect equipment routinely for leaks and spills.
- Repair equipment immediately, if necessary, implement a preventative maintenance schedule for equipment and vehicles.

Fueling Area

- Perform fueling in designated fueling area minimum 50' away from federal waters.
- Use secondary containment (drain pan) to catch spills.
- Use proper equipment (pumps, funnels) to transfer fluids.
- Keep spill kits readily accessible.
- Inspect fueling areas routinely for leaks and spills.
- Hazardous Material Storage Areas: Reduce the amount of hazardous materials by substituting non-hazardous or less hazardous materials.

Hazardous Material Storage Areas

- Minimize the quantity of hazardous materials brought onsite.
- Store hazardous materials in a designated area away from drainage points.

Unexpected Contaminated Soil and Water

- Investigate historical site use.
- Perform all excavation activities carefully and only after the Owner/Construction.

- Manager directs any activities.

Toilets

- Portable toilets will be located a minimum of 10 feet from stormwater inlets and 50 feet from state waters. They shall be adequately staked and cleaned on a weekly basis. They will be inspected daily for spills.

SPILL CONTAINMENT METHODS

The following discussion identifies the types of secondary containment that will be used in the event of a spill. Table 1 summarizes the containment methods for each potential source.

- **Equipment Staging and Maintenance Area:** An equipment leak from a fuel tank, equipment seal, or hydraulic line will be contained within a spill containment cell placed beneath all stationary potential leak sources. An undetected leak from parked equipment will be cleaned up using hand shovels and containerized in a 55-gallon steel drum for offsite disposal.
- **Fueling Area:** A small spill during fueling operations will be contained using fuel absorbent pads at the nozzle. The transfer of fuel into portable equipment will be performed using a funnel and/or hand pump and a spill pad used to absorb any incidental spills/drips. Any leaking tanks or drums will have fluids removed and transferred to another tank, drum, or container for the fluids. A spill response kit will be located near the fueling area or on the fuel truck for easy access. The spill response kit will include plastic sheeting, tarps, over pack drums, absorbent litter, and shovels.
- **Hazardous Material Storage Area:** A spill from containers or cans in a hazardous material storage area will be contained within the storage cabinet these materials are kept in.
- **Unexpected Contaminated Soil:** If contaminated soil is encountered during the project, the Owner/Construction Manager will be notified immediately. Small quantities of suspected contaminated soil will be placed on a 6-mil plastic liner and covered with 6-mil plastic. A soil berm or silt fence will be used to contain the stockpile and prevent migration of contaminated liquids in

the soil.

Table 1: Spill Prevention and Containment Methods

Potential Spill Source	Containment Method(s)
Equipment staging and maintenance area	Spill containment pad, spill kit, pumps, funnels
Fueling area (site equipment only)	Spill containment pad, spill kit, pumps, funnels
Hazardous material staging area	Spill containment pad, spill kit, pumps, funnels
Unexpected contaminated soil	Plastic liner, plastic cover, soil berm, hay bales, lined super sacks

SPILL COUNTERMEASURES

Every preventative measure shall be taken to keep contaminated or hazardous materials contained. If a release occurs, the following actions shall be taken:

1. **Stop the Spill:** The severity of a spill at the site is anticipated to be minimal as large containers/quantities of Hazardous Materials are not anticipated. The type of spill would occur while dispensing material at the hazardous materials storage facility and would likely be contained in secondary containment. Thus, the use spill kits or other available absorbent materials should stop the spill.

2. **Warn Others:** Notify co-workers and supervisory personnel of the release. Notify emergency responders if appropriate. For site personnel, an alarm system will consist of three one second blasts on an air horn sounded by the person discovering a spill or fire. In the event of any spill, the Superintendent and Project Manager shall be notified if the spill is 5 gallons or more the STATE will be contacted along with the Fire Department.

3. **Isolate the Area:** Prevent public access to the area and continue to minimize the spread of the material. Minimize personal exposure throughout emergency response actions.

4. **Containment:** A spill shall only be contained by trained personnel and if it is safe to do so. DO NOT PLACE YOURSELF IN DANGER. Attempt to extinguish a fire only if it is in the incipient stage; trash can size or smaller. For larger spills, wait for the arrival of emergency response personnel and provide directions to the location of the emergency.

5. **Complete a Spill and Incident Report:** For each spill of a Hazardous Material a spill and incident report shall be completed and submitted to the Owner/Construction Manager and if applicable to the Engineer and the State of Colorado Department of Public Health and Environment.

MAINTENANCE, INSPECTION AND REPAIR

The owner or his representative shall inspect and monitor all BMPs using the enclosed “Monitoring and Maintenance Inspection Record” checklist in the appendix. In order to ensure that all graded surfaces, structures, vegetation, erosion and sediment control measures and other protective devices identified in the erosion control plan are maintained in good and effective condition, an Operation and Maintenance Inspection Monitoring Program will be implemented by the permit holder during the construction phase. A systematic inspection of all the above-mentioned protective devices will be performed by a qualified stormwater manager (who is sufficiently qualified for the required duties per the ECM Appendix 1.5) using the operation and maintenance inspection record form in the appendix every 14 days. Also, post-storm event inspections must be conducted within 24 hours after the end of any precipitation or snowmelt event that causes surface erosion. Provided the timing is appropriate, the post-storm inspections may be used to fulfill the 14-day routine inspection requirement. A more frequent inspection schedule than the minimum inspections described may be necessary to ensure that BMPs continue to operate as needed to comply with the plan. All monitoring records are to be kept with the SWMP for a period of no less than three (3) years. The inspection logs shall be signed by the stormwater inspector. All maintenance of temporary and

permanent erosion and sediment control facilities shall be per the details included in this report.

This lot will be considered stabilized when all construction activities have been completed and vegetation has been established to 70% of pre-disturbed levels. Erosion control measures such as sedimentation control log must be removed after final stabilization following EPC approval.

Any major revisions or modification to this Storm Water Management Plan will require a report addendum and erosion control map revision. Minor revisions may be made by the Stormwater Manager by redlining the Storm Water Management Plan or inserting additional pages. The SWMP should be viewed as a “living document” that is continuously being reviewed and modified as a part of the overall process of evaluating and managing stormwater quality issues at the site. The Qualified Stormwater Manager shall amend the SWMP when there is a change in design, construction, operation or maintenance of the site which would require the implementation of new or revised BMPs or if the SWMP proves to be ineffective in achieving the general objectives of controlling pollutants in stormwater discharges associated with construction activity or when BMPs are no longer necessary and are removed.

The onsite SWMP will be located at: _____

FINAL STABILIZATION AND LONGTERM STORMWATER MANAGEMENT

Permanent stabilization measures include seeding, and mulching. These temporary BMPS's are to be removed once the 70% of pre-disturbed levels vegetation has been established following EPC approval.

STATE REQUIREMENTS THAT ARE NOT APPLICABLE

The requirement for a phasing plan is not applicable as only one construction phase is proposed.

The requirement for spill prevention and pollution controls for dedicated batch plants is not applicable as no batch plants are proposed.

The requirement to show the location of any dedicated asphalt / concrete batch plants is no applicable as no

batch plants are proposed.

PREPARED BY:

Terra Nova Engineering, Inc.
John Fornander, P.E.
Project Manager
Jobs/258300/Word/258300 SWMP-RPT.doc

APPENDIX

GENERAL LOCATION MAP

TEMPORARY EROSION CONTROL DETAILS
(See Sheet 6 of Grading & Erosion Control Plan)

CONSTRUCTION SCHEDULE AND SEQUENCE

Erosion control measures shall be implemented in a manner that will protect properties and public facilities from the adverse effects of erosion and sedimentation as a result of construction and earthwork activities.

Installation of the underground lines will begin in Spring of 2026 with completion of the work anticipated to be in Fall of 2026. The 70% established vegetation is estimated to be in Spring of 2027.

Before clearing and grubbing may begin the initial and interim BMPs are to be installed with appropriate measures to protect downstream. Streets will be cleared/swept as necessary to remove any significant sediment accumulation and prevent migration of uneven dirt clods/mud.

The BMPs are to be checked for conformance and adjusted appropriately.

The final level of BMPs shall be installed once the previous BMPs and construction are completed. This level includes any disturbed areas and stockpiles which are not at final grade, but will remain dormant for longer than 30 days to be mulched within 21 days after interim grading. Any area that is going to remain in an interim state for more than 60 days shall also be seeded. All temporary soil erosion control measures and BMP'S shall be maintained until permanent soil erosion control measures are implemented and vegetation has been established to 70% on areas not to be covered with gravel. These temporary BMPS's are to be removed once the 70% vegetation or permanent landscaping has been established.



2880 International Circle, Suite 110
 Colorado Springs, CO 80910
 Phone: 719-520-6300
 Email: Stormwater@elpasoco.com
publicworks.elpasoco.com/stormwater/

EL PASO COUNTY PCM APPLICABILITY FORM

EPC Project Number: _____

This form is to be used by the Engineer of Record to determine if the proposed construction activities are eligible for an exclusion to stormwater quality permanent control measure (PCM) requirements. All “applicable construction activity” within El Paso County (EPC) must comply with the post-construction stormwater management criteria. Reference ECM Appendix I for information about PCMs.

Note that this form only addresses stormwater quality for the site. Even if the site is fully excluded from needing a stormwater quality PCM, the site may still need to address stormwater detention (per DCMv1 Chap 1.5 and ECM Chap 3.2.8.B). However, if the site requires stormwater detention, then it must also address stormwater quality (per DCMv2 Chap 4.1 and ECM Appendix I.7.3). Refer to the Reference Information pages below for more guidance.

Part I. Project Summary			
Project Name:			
Is Stormwater Detention Required?	<input type="checkbox"/> Yes <input type="checkbox"/> No	Is Water Quality Treatment Required? (i.e.: non-excluded disturbance >1ac)	<input type="checkbox"/> Yes <input type="checkbox"/> No
Is an ESQCP Required? If “No,” Check Applicable Reason	<input type="checkbox"/> Yes <input type="checkbox"/> No	<input type="checkbox"/> Not an Applicable Construction Activity <input type="checkbox"/> Oil & Gas <input type="checkbox"/> R-Factor	
Engineer of Record Email Address:			

Part II. PCM Exclusions				
Note: Questions A through K directly correlate to Part I.E.4.a.i (A) to (K) on page 27 of the 2016 CDPS Statewide Standard MS4 General Permit COR090000 (i.e.: the MS4 Permit), as amended. Document exclusions that apply to the whole project or parts of it.				
Questions	Excluded Acreage	Yes	No	Notes
A. Is this project a “Pavement Management Site?”				This exclusion applies to the maintenance, rehabilitation, and reconstruction of pavement on existing roads, bridges, bike lanes, and parking along roads. Areas used primarily for parking (i.e.: separate lots not along roadway) or access to parking are not included. No increase in impervious area is allowable.
B. Review two options below to see if project is an “Excluded Roadway Development.”				Does <u>not</u> include sidewalks. Does include curb & gutter.
<ul style="list-style-type: none"> Does the project include improvements to an existing roadway that adds < 1 acre of paved or gravel area per mile of roadway? 				If selected, list the proposed additional acreage per mile in Part IV Notes below.
<ul style="list-style-type: none"> Does the project include improvements to an existing roadway that adds ≤ 8.25 ft of paved width at any location? 				If selected, list the proposed additional width in Part IV Notes below.



2880 International Circle, Suite 110
 Colorado Springs, CO 80910
 Phone: 719-520-6300
 Email: Stormwater@elpasoco.com
publicworks.elpasoco.com/stormwater/

EL PASO COUNTY PCM APPLICABILITY FORM

EPC Project Number: _____

Part II. PCM Exclusions (continued)				
Questions	Excluded Acreage	Yes	No	Notes
C. Does the project include “Excluded Existing Roadway Areas?”				For redevelopment of <u>existing</u> roadways. This exclusion only excludes the original roadway area, it does NOT apply to the entire project. This exclusion applies only when the proposed project will expand the existing roadway width by <2x on average. If selected, list the proposed expanded width in Part IV Notes below.
D. Is the project considered an Aboveground or Underground Utilities activity?				Activity can <u>not</u> permanently alter the terrain, ground cover, or drainage patterns from existing conditions.
E. Is the project considered a “Large Lot Single-Family Site”? <i>This exclusion only pertains to the lots and does not include roadways.</i>				Must be a single-family residential lot or agricultural zoned land with ≥ 2.5 acres per dwelling and total lot impervious area < 10%. If “Yes,” notate the percent impervious below in Part IV: Notes.
F. Do Non-Residential or Non-Commercial Infiltration Conditions exist? <i>Post-development surface conditions do not result in concentrated stormwater flow or surface water discharge during an 80th percentile stormwater runoff event, and the 80th percentile event must be infiltrated.</i>				Exclusion does not apply to residential or commercial sites for buildings. A site-specific study is required and must show rainfall and soil conditions, allowable slopes, surface conditions, and ratios of imperviousness area to pervious area.
G. Is the project land disturbance to Undeveloped Land where undeveloped land remains undeveloped following the activity?				Project must be on land with no human made structures such as buildings or pavement. The proposed development must return the disturbed area to its historical condition. See CDPHE’s “Standard MS4 Permit FAQ” for more detail on how this exclusion applies.
H. Is the project a Stream Stabilization Site?				
I. Is the project a Bike or Pedestrian Trail?				Bike lanes for roadways are not included in this exclusion but may qualify if attached to a larger roadway activity that is excluded in A, B or C above. Pedestrian trails (e.g. sidewalks) that are attached to a roadway do not apply.
J. Is the project Oil and Gas Exploration?				Activities and facilities associated with oil and gas exploration are excluded.
K. Is the project in a County Growth Area?				El Paso County does not apply this exclusion.
If any exclusions above apply (via a “Yes” for any row), runoff from those areas is excluded from stormwater quality treatment requirements. All runoff from remaining non-excluded disturbed areas will need to be treated by a stormwater quality PCM, unless remaining area is <1ac. If remaining area is >1ac, select at least one Design Standard on the next page.				



2880 International Circle, Suite 110
 Colorado Springs, CO 80910
 Phone: 719-520-6300
 Email: Stormwater@elpasoco.com
publicworks.elpasoco.com/stormwater/

EL PASO COUNTY PCM APPLICABILITY FORM

EPC Project Number: _____

Part III: PCM Information		
Questions	Yes	No
1. Which of the following Design Standard(s) will the project utilize? <i>(If a PCM is required, you must select at least one. See Control Measure Requirements identified in MS4 Permit Part I.E.4.a.iv on page 29.)</i>		
A. Water Quality Capture Volume (WQCV) Standard		
B. Pollutant Removal Standard - 80% Total Suspended Solids Removal (TSS) <i>(must treat runoff to <30mg/L of TSS)</i>		
C. Runoff Reduction Standard		
D. Applicable Development Site Draining to a Regional WQCV Control Measure <i>(no conveyance via "Waters of the State")</i>		
E. Applicable Development Site Draining to a Regional WQCV Facility <i>(conveyance allowable via "Waters of the State," if the 8 conditions in the MS4 permit are met and documented in the drainage report)</i>		
F. Constrained Redevelopment Sites Standard <i>(must be pre-approved by ECM Administrator)</i>		
G. Previous Permit Term Standard		
2. Will any of the PCMs be located within any other jurisdiction besides EPC?		

Part IV: Notes
Provide info regarding all applicable PCM(s) and PCM Exclusion(s) including location, PCM name(s)/number(s), and additional relevant filings or reports or maintenance agreements, etc. Attach an additional sheet if you need more space. Attaching a detailed summary table would replace the need for any notes here.



2880 International Circle, Suite 110
Colorado Springs, CO 80910
Phone: 719-520-6300
Email: Stormwater@elpasoco.com
publicworks.elpasoco.com/stormwater/

EL PASO COUNTY PCM APPLICABILITY FORM

EPC Project Number: _____

Part V: Signatures

Applicant: This PCM Applicability Form was prepared under my direction and supervision and is correct to the best of my knowledge and belief. It was prepared along with the project design, construction plans, drainage report, specifications, and maintenance and access agreements as required. And it has been reviewed for compliance with the Post Construction Stormwater Management criteria and MS4 Permit requirements.



Signature and Stamp of Engineer of Record
(If the project is not an Applicable Construction Activity, this line can be signed by the Applicant or their rep, they do not have to be an engineer)

Date

El Paso County: This PCM Applicability Form has been reviewed and the project design, construction plans, drainage report, specifications, and maintenance and access agreements as required, have been reviewed for compliance with the Post Construction Stormwater Management process and MS4 Permit requirements.

Signature of El Paso County Project Engineer

Date

Reference Information:

If a PCM is required, then these additional documents will also need to be submitted:

- PCM Maintenance Agreement
- PCM O&M Manual
- MHFD Detention Basin Design Workbook*
- Proof of Submittal of: Notice of Intent to Construct a Non-Jurisdictional Water Impoundment Structure*

*Not required for all PCMs, check ECM Appendix I for requirements

The following are screenshots of example Water Quality Treatment Summary Tables. The Excel versions can be found at the EPC DPW Stormwater website linked below. These are optional tables that can be used to summarize water quality treatment and applicable exclusions. Select the table that best suits the project based on the number of basins, PCMs, and/or exclusions. A PDF of the selected table(s) can be attached to this form and/or to the Drainage Report. It is helpful to also include a basic overview map with color shading or hatch patterns that shows areas tributary to each type of PCM (pond, runoff reduction, etc.) and those areas that are not captured by a PCM, with the applicable exclusion(s) labeled.

<https://publicworks.elpasoco.com/stormwater/>

Basin ID(s)	PCM Tributary Area (ac)	PCM ID
A1 - A5	4	Pond 1
B1 - B3	3.25	Pond 2
C, D	5.5	Runoff Reduction
E	10	Excluded*

* Excluded based on ECM App I.7.1.B.5

Basin ID	Total Area (ac)	Total Proposed Disturbed Area (ac)	Area Trib to Pond A (ac)	Disturbed Area Treated via Runoff Reduction (ac)	Disturbed Area Excluded from WQ per ECM App I.7.1.C.1 (ac)	Disturbed Area Excluded from WQ per ECM App I.7.1.B.# (ac)	Applicable WQ Exclusions (App I.7.1.B.#)
A	4.50	4.50	4.50				
B	1.25	1.25		1.25			
C	6.00	4.00				4.00	ECM App I.7.1.B.5
D	2.50	2.50	1.00		0.50	1.00	ECM App I.7.1.B.7
E	3.00		3.00				
F	8.25						
Total	25.50	12.25	8.50	1.25	0.50	5.00	

Min Required Area to Receive WQ Treatment	Total Proposed Disturbed Area (ac)	Total Proposed Treated Area (ac)	Total Proposed Disturbed Area Excluded from WQ (ac)	Net Treatment (ac)
6.75	12.25	9.75	5.50	3.00

Design Standard D, definition of “Waters of the State of Colorado” per MS4 Permit:

“Any and all surface waters and subsurface waters which are contained in or flow in or through this state, but does not include waters in sewage systems, waters in treatment works of disposal systems, waters in potable water distribution systems, and all water withdrawn for use until use and treatment have been completed. This definition can include water courses that are usually dry.”

The following website shows Waters of the State of Colorado:

<https://cdphe.maps.arcgis.com/apps/Viewer/index.html?appid=f1541d2f21834642ba1551c674fd4a79>

Design Standard E, additional info from the MS4 Permit:

Before discharging to a water of the state, at least 20 percent of the upstream imperviousness of the applicable development site must be disconnected from the storm drainage system and drain through a receiving pervious area control measure comprising a footprint of at least 10 percent of the upstream disconnected impervious area of the applicable development site. The control measure must be designed in accordance with a design manual identified by the permittee. In addition, the stream channel between the discharge point of the applicable development site and the regional WQCV facility must be stabilized.

Below are the 8 conditions that must be met:

- 1) The regional WQCV facility must be implemented, functional, and maintained following good engineering, hydrologic and pollution control practices.*
- 2) The regional WQCV facility must be designed and maintained for 100% WQCV for its entire drainage area.*
- 3) The regional WQCV facility must have capacity to accommodate the drainage from the applicable development site.*
- 4) The regional WQCV facility be designed and built to comply with all assumptions for the development activities planned by the permittee within its drainage area, including the imperviousness of its drainage area and the applicable development site.*
- 5) Evaluation of the minimum drain time shall be based on the pollutant removal mechanism and functionality of the facility. Consideration of drain time shall include maintaining vegetation necessary for operation of the facility (e.g., wetland vegetation).*
- 6) The permittee shall meet the requirements in Parts I.E.4.a.v. and vii. and Part I.E.4.b. for the regional WQCV facility consistent with requirements and actions for control measures.*
- 7) The regional WQCV facility must be subject to the permittee’s authority consistent with requirements and actions for a Control Measure in accordance with Part I.E.4.a.iv.*
- 8) Regional Facilities must be designed and implemented with flood control or water quality as the primary use. Recreational ponds and reservoirs may not be considered Regional Facilities. Water bodies listed by name in surface water quality classifications and standards regulations (5 CCR 1002-32 through 5 CCR 1002-38) may not be considered regional facilities.*

GENERAL

PERMIT

APPLICATION

OPERATION AND MAINTENANCE INSPECTION RECORD

The following inspection records are to be used at each bi-monthly stormwater management system inspection and after any precipitation or snowmelt event that causes surface runoff. As a result of these inspections, the SWMP may need to be revised. The inspection records and revised SWMP shall be made available to the division upon request. If the construction activity lasts more than 12 months, a copy of the inspection records and revised SWMP shall be sent to the division by May 1 of each year covering April 1 to March 31.

EROSION CONTROL PLAN

(see back pocket)

OPERATION AND MAINTENANCE INSPECTION RECORD

CONSTRUCTION STORMWATER SITE INSPECTION REPORT

Facility Name		Permittee					
Date of Inspection		Weather Conditions					
Permit Certification #		Disturbed Acreage					
Phase of Construction		Inspector Title					
Inspector Name							
Is the above inspector a qualified stormwater manager? (permittee is responsible for ensuring that the inspector is a qualified stormwater manager)			<table border="1" style="width: 100%; border-collapse: collapse;"> <tr> <td style="width: 50%; text-align: center;">YES</td> <td style="width: 50%; text-align: center;">NO</td> </tr> <tr> <td style="text-align: center;"><input type="checkbox"/></td> <td style="text-align: center;"><input type="checkbox"/></td> </tr> </table>	YES	NO	<input type="checkbox"/>	<input type="checkbox"/>
YES	NO						
<input type="checkbox"/>	<input type="checkbox"/>						

INSPECTION FREQUENCY					
Check the box that describes the minimum inspection frequency utilized when conducting each inspection					
At least one inspection every 7 calendar days	<input type="checkbox"/>				
At least one inspection every 14 calendar days, with post-storm event inspections conducted within 24 hours after the end of any precipitation or snowmelt event that causes surface erosions	<input type="checkbox"/>				
<ul style="list-style-type: none"> • This is this a post-storm event inspection. Event Date: _____ 	<input type="checkbox"/>				
Reduced inspection frequency - Include site conditions that warrant reduced inspection frequency	<input type="checkbox"/>				
<ul style="list-style-type: none"> • Post-storm inspections at temporarily idle sites 	<input type="checkbox"/>				
<ul style="list-style-type: none"> • Inspections at completed sites/area 	<input type="checkbox"/>				
<ul style="list-style-type: none"> • Winter conditions exclusion 	<input type="checkbox"/>				
Have there been any deviations from the minimum inspection schedule? If yes, describe below.	<table border="1" style="width: 100%; border-collapse: collapse;"> <tr> <td style="width: 50%; text-align: center;">YES</td> <td style="width: 50%; text-align: center;">NO</td> </tr> <tr> <td style="text-align: center;"><input type="checkbox"/></td> <td style="text-align: center;"><input type="checkbox"/></td> </tr> </table>	YES	NO	<input type="checkbox"/>	<input type="checkbox"/>
YES	NO				
<input type="checkbox"/>	<input type="checkbox"/>				

INSPECTION REQUIREMENTS*
i. Visually verify all implemented control measures are in effective operational condition and are working as designed in the specifications
ii. Determine if there are new potential sources of pollutants
iii. Assess the adequacy of control measures at the site to identify areas requiring new or modified control measures to minimize pollutant discharges
iv. Identify all areas of non-compliance with the permit requirements, and if necessary, implement corrective action
*Use the attached Control Measures Requiring Routine Maintenance and Inadequate Control Measures Requiring Corrective Action forms to document results of this assessment that trigger either maintenance or corrective actions

AREAS TO BE INSPECTED			
Is there evidence of, or the potential for, pollutants leaving the construction site boundaries, entering the stormwater drainage system or discharging to state waters at the following locations?			
	NO	YES	If "YES" describe discharge or potential for discharge below. Document related maintenance, inadequate control measures and corrective actions Inadequate Control Measures Requiring Corrective Action form
Construction site perimeter	<input type="checkbox"/>	<input type="checkbox"/>	
All disturbed areas	<input type="checkbox"/>	<input type="checkbox"/>	
Designated haul routes	<input type="checkbox"/>	<input type="checkbox"/>	
Material and waste storage areas exposed to precipitation	<input type="checkbox"/>	<input type="checkbox"/>	
Locations where stormwater has the potential to discharge offsite	<input type="checkbox"/>	<input type="checkbox"/>	
Locations where vehicles exit the site	<input type="checkbox"/>	<input type="checkbox"/>	
Other: _____	<input type="checkbox"/>	<input type="checkbox"/>	

REPORTING REQUIREMENTS

The permittee shall report the following circumstances orally within twenty-four (24) hours from the time the permittee becomes aware of the circumstances, and shall mail to the division a written report containing the information requested within five (5) working days after becoming aware of the following circumstances. The division may waive the written report required if the oral report has been received within 24 hours.

All Noncompliance Requiring 24-Hour Notification per Part II.L.6 of the Permit		
a. Endangerment to Health or the Environment Circumstances leading to any noncompliance which may endanger health or the environment regardless of the cause of the incident (See Part II.L.6.a of the Permit) <i>This category would primarily result from the discharge of pollutants in violation of the permit</i>		
b. Numeric Effluent Limit Violations <ul style="list-style-type: none"> o Circumstances leading to any unanticipated bypass which exceeds any effluent limitations (See Part II.L.6.b of the Permit) o Circumstances leading to any upset which causes an exceedance of any effluent limitation (See Part II.L.6.c of the Permit) o Daily maximum violations (See Part II.L.6.d of the Permit) <i>Numeric effluent limits are very uncommon in certifications under the COR400000 general permit. This category of noncompliance only applies if numeric effluent limits are included in a permit certification.</i>		

Has there been an incident of noncompliance requiring 24-hour notification?	NO	YES	
	<input type="checkbox"/>	<input type="checkbox"/>	If "YES" document below

Date and Time of Incident	Location	Description of Noncompliance	Description of Corrective Action	Date and Time of 24 Hour Oral Notification	Date of 5 Day Written Notification *

*Attach copy of 5 day written notification to report. Indicate if written notification was waived, including the name of the division personnel who granted waiver.

After adequate corrective action(s) and maintenance have been taken, or where a report does not identify any incidents requiring corrective action or maintenance, the individual(s) designated as the Qualified Stormwater Manager, shall sign and certify the below statement:

"I verify that, to the best of my knowledge and belief, all corrective action and maintenance items identified during the inspection are complete, and the site is currently in compliance with the permit."

Name of Qualified Stormwater Manager

Title of Qualified Stormwater Manager

Signature of Qualified Stormwater Manager

Date

Notes/Comments

VOLLMER SUBSTATION WEST CIRCUIT

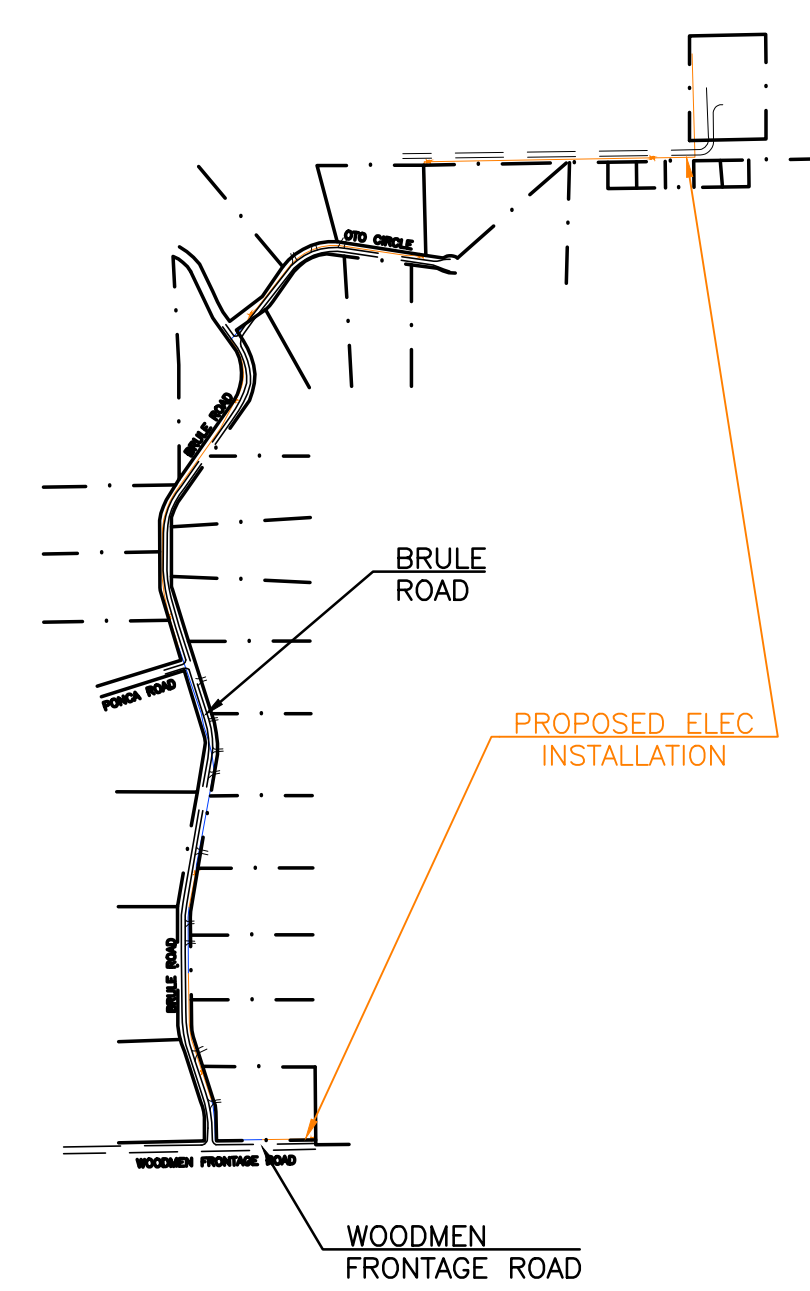
EL PASO COUNTY, CO

GRADING, EROSION, & SEDIMENT CONTROL PLAN

MARCH 2026

STANDARD NOTES FOR EL PASO COUNTY GRADING AND EROSION CONTROL PLANS

- NOTWITHSTANDING ANYTHING DEPICTED IN THESE PLANS IN WORDS OR GRAPHIC REPRESENTATION, ALL DESIGN AND CONSTRUCTION RELATED TO ROADS, STORM DRAINAGE, AND EROSION CONTROL SHALL CONFORM TO THE STANDARDS AND REQUIREMENTS OF THE MOST RECENT VERSION OF THE RELEVANT ADOPTED EL PASO COUNTY (EPC) STANDARDS, INCLUDING THE LAND DEVELOPMENT CODE (LDC), THE ENGINEERING CRITERIA MANUAL (ECM), THE DRAINAGE CRITERIA MANUAL (DCM) VOLUME 1 AND 2. ANY DEVIATIONS FROM REGULATIONS AND STANDARDS MUST BE REQUESTED, AND APPROVED, IN WRITING.
- A PRECONSTRUCTION MEETING BETWEEN THE PERMIT HOLDER(S) AND EL PASO COUNTY SHALL BE HELD PRIOR TO ANY CONSTRUCTION ACTIVITIES. IT IS THE RESPONSIBILITY OF THE PERMIT HOLDER(S) TO COORDINATE THE MEETING TIME AND PLACE WITH COUNTY STAFF. NO LAND DISTURBANCE OR CONSTRUCTION ACTIVITIES BEYOND THE INSTALLATION OF THE INITIAL CONSTRUCTION CONTROL MEASURES (CCMS), AS INDICATED ON THE APPROVED GEC PLAN OR CDS WITH GEC PLANS, MAY OCCUR PRIOR TO RECEIVING A NOTICE TO PROCEED (NTP) ISSUED BY THE ECM ADMINISTRATOR. FAILURE TO OBTAIN A NOTICE TO PROCEED PRIOR TO BEGINNING LAND DISTURBING ACTIVITIES MAY RESULT IN AN IMMEDIATE STOP WORK ORDER (SWO).
- CONSTRUCTION CONTROL MEASURES MUST BE INSTALLED PRIOR TO COMMENCEMENT OF ACTIVITIES THAT COULD CONTRIBUTE POLLUTANTS TO STORMWATER. STORMWATER RUNOFF FROM ALL DISTURBED AREAS AND SOIL STORAGE AREAS MUST UTILIZE OR FLOW TO ONE OR MORE CCM(S) TO MINIMIZE EROSION OR SEDIMENT IN THE DISCHARGE. THE CCM(S) MUST CONTAIN OR FILTER FLOWS IN ORDER TO PREVENT THE BYPASS OF FLOWS WITHOUT TREATMENT AND MUST BE APPROPRIATE FOR STORMWATER RUNOFF FROM DISTURBED AREAS AND FOR THE EXPECTED FLOW RATE, DURATION, AND FLOW CONDITIONS (E.G., SHEET OR CONCENTRATED FLOW).
- ALL CCM(S) SHALL BE MAINTAINED AND REMAIN IN EFFECTIVE OPERATING CONDITION UNTIL FINAL STABILIZATION IS ACHIEVED. THE QUALIFIED STORMWATER MANAGER (QSM) SHALL ASSESS THE ADEQUACY OF CCM(S) AT THE SITE AND IDENTIFY IF CHANGES TO THOSE CCM(S) ARE NEEDED TO ENSURE THE CONTINUED EFFECTIVE PERFORMANCE OF THE CCM(S).
- PRIOR TO CONSTRUCTION THE PERMIT HOLDER(S) SHALL VERIFY THE LOCATION OF EXISTING UTILITIES.
- MANAGEMENT OF THE STORMWATER MANAGEMENT PLAN (SWMP) DURING CONSTRUCTION IS THE RESPONSIBILITY OF THE DESIGNATED QSM. THE SWMP SHALL BE LOCATED ON-SITE OR DIGITALLY ACCESSIBLE AT ALL TIMES DURING CONSTRUCTION ACTIVITIES AND MUST BE IMPLEMENTED AS WRITTEN FROM THE START OF CONSTRUCTION ACTIVITY UNTIL FINAL STABILIZATION IS ACHIEVED. THE QSM SHALL AMEND THE SWMP WHEN THERE IS A CHANGE IN DESIGN, CONSTRUCTION, OPERATION, OR MAINTENANCE OF THE SITE WHICH WOULD REQUIRE THE IMPLEMENTATION OF NEW OR REVISED CCM(S) OR IF THE SWMP PROVES TO BE INEFFECTIVE IN CONTROLLING POLLUTANTS IN STORMWATER RUNOFF ASSOCIATED WITH CONSTRUCTION ACTIVITY OR WHEN CCM(S) ARE NO LONGER NECESSARY AND ARE REMOVED. THE QSM SHALL MAINTAIN A RECORD OF AMENDMENTS MADE TO THE SWMP THAT INCLUDES THE DATE AND IDENTIFICATION OF THE CHANGES.
- EARTH DISTURBANCES SHALL BE CONDUCTED IN SUCH A MANNER SO AS TO EFFICIENTLY MINIMIZE ACCELERATED SOIL EROSION AND RESULTING SEDIMENTATION. ALL DISTURBANCES SHALL BE DESIGNED, CONSTRUCTED, AND COMPLETED SO THAT THE EXPOSED AREA OF ANY DISTURBED LAND SHALL BE LIMITED TO THE SHORTEST PRACTICAL PERIOD OF TIME. PRE-EXISTING VEGETATION SHALL BE PROTECTED AND MAINTAINED WITHIN 50 HORIZONTAL FEET OF A RECEIVING WATER UNLESS SHOWN TO BE INFEASIBLE AND SPECIFICALLY REQUESTED AND APPROVED. IN ADDITION TO MAINTAINING 50 HORIZONTAL FEET OF PRE-EXISTING VEGETATION UPGRADIENT OF A RECEIVING WATER (UNLESS INFEASIBLE AND APPROVED), THE PERMIT HOLDER(S) MUST INSTALL CCM(S) UPGRADIENT OF THE VEGETATIVE BUFFER.
- TEMPORARY STABILIZATION MEASURES SHALL BE IMPLEMENTED ON DISTURBED AREAS AND STOCKPILES WHERE GROUND DISTURBING CONSTRUCTION ACTIVITY HAS PERMANENTLY CEASED OR TEMPORARILY CEASED FOR LONGER THAN 14 DAYS.
- EROSION CONTROL BLANKET (ECB) OR OTHER APPROVED CONTROL MEASURE(S) SHALL BE USED ON SLOPES STEEPER THAN 3:1.
- VEHICLE TRACKING CONTROLS (VTC) MUST BE IMPLEMENTED TO MINIMIZE VEHICLE TRACKING OF SEDIMENT FROM DISTURBED AREAS. VTC'S MUST INCLUDE A STRUCTURE CONTROL MEASURE (E.G., TRACKING PAD) AND MAY INCLUDE A NON-STRUCTURAL CONTROL MEASURE (E.G., SWEEPING). MATERIAL TRACKED OFF-SITE SHALL BE CLEANED UP AND PROPERLY DISPOSED OF IMMEDIATELY.
- ANY TEMPORARY OR PERMANENT CONTROL MEASURE DESIGNED AND CONSTRUCTED FOR THE CONVEYANCE OF STORMWATER AROUND, THROUGH, OR FROM THE EARTH DISTURBANCE AREA SHALL BE A STABILIZED CONVEYANCE DESIGNED TO MINIMIZE EROSION AND THE DISCHARGE OF SEDIMENT OFF-SITE.
- NO PERSON SHALL CAUSE THE IMPEDIMENT OF STORMWATER FLOW IN THE CURB AND GUTTER, PERMANENT CONTROL MEASURES (PCMS), OR DITCHES EXCEPT WITH APPROVED SEDIMENT CONTROL MEASURES.
- ALL PCMS SHALL BE INSTALLED AS DESIGNED IN THE APPROVED PLANS. ANY PROPOSED CHANGES THAT AFFECT THE DESIGN OR FUNCTION OF PCMS MUST BE APPROVED BY THE ECM ADMINISTRATOR PRIOR TO IMPLEMENTATION.
- SOIL COMPACTION MUST BE MINIMIZED IN AREAS WHERE INFILTRATION PCMS WILL BE INSTALLED OR IN AREAS WHERE FINAL STABILIZATION WILL BE ACHIEVED BY VEGETATIVE COVER. AREAS DESIGNATED FOR INFILTRATION PCMS SHALL ALSO BE PROTECTED FROM SEDIMENTATION DURING CONSTRUCTION UNTIL FINAL STABILIZATION IS ACHIEVED. IF SOIL COMPACTION DOES OCCUR IN AREAS WHERE FINAL STABILIZATION WILL BE ACHIEVED BY VEGETATIVE COVER OR IN AREAS WHERE INFILTRATION PCMS WILL BE INSTALLED, DECOMPACTION OF THE SOIL MUST BE COMPLETED PRIOR TO PLANTING OR INSTALLATION OF THE PCM(S). AN INFILTRATION TEST MUST BE CONDUCTED FOR ALL INFILTRATION PCMS AND THE INFILTRATION TEST RESULTS SUBMITTED TO EL PASO COUNTY PRIOR TO PRELIMINARY ACCEPTANCE (PA).
- FINAL STABILIZATION MUST BE IMPLEMENTED AT ALL APPLICABLE CONSTRUCTION SITES. FINAL STABILIZATION IS ACHIEVED WHEN ALL GROUND DISTURBING ACTIVITIES AT THE SITE HAVE BEEN COMPLETED AND PERMANENT STABILIZATION METHODS ARE COMPLETE. WHEN USING VEGETATIVE COVER AS A PERMANENT STABILIZATION METHOD, THE VEGETATION SHALL BE EVENLY DISTRIBUTED PERENNIAL VEGETATION AND OF THE VARIETY AND SPECIES FOUND IN THE COUNTY-APPROVED SEED MIXES OR IN THE APPROVED GEC PLAN. VEGETATION COVERAGE SHALL BE, AT A MINIMUM, EQUAL TO 70% OF WHAT WOULD HAVE BEEN PROVIDED BY NATIVE VEGETATION IN A LOCAL, UNDISTURBED AREA OR ADEQUATE REFERENCE SITE. ALL TEMPORARY CCM(S) SHALL BE REMOVED UPON FINAL STABILIZATION AND PRIOR TO STORMWATER PERMIT TERMINATION.
- STORMWATER DISCHARGES FROM CONSTRUCTION SITES SHALL NOT CAUSE OR THREATEN TO CAUSE POLLUTION, CONTAMINATION, OR DEGRADATION OF SURFACE WATER AND EARTH DISTURBANCE SHALL BE DONE IN A MANNER THAT MINIMIZES POLLUTION OF ANY ON-SITE OR OFF-SITE WATERS, INCLUDING WETLANDS.
- CONCRETE WASH WATER SHALL BE CONTAINED AND DISPOSED OF IN ACCORDANCE WITH THE SWMP. NO WASH WATER SHALL BE DISCHARGED TO OR ALLOWED TO BE DISCHARGED OFFSITE OR TO ENTER STATE WATERS, INCLUDING ANY SURFACE OR SUBSURFACE STORM DRAINAGE SYSTEM OR CONTROL MEASURES. CONCRETE WASHOUT AREAS SHALL NOT BE LOCATED IN AN AREA WHERE SHALLOW GROUNDWATER MAY BE PRESENT, OR WITHIN 50 FEET OF A SURFACE WATER BODY, CREEK, OR STREAM.
- DURING CONSTRUCTION DEWATERING OPERATIONS, UNCONTAMINATED GROUNDWATER MAY BE DISCHARGED ON-SITE IN ACCORDANCE WITH THE COLORADO DEPARTMENT OF PUBLIC HEALTH AND ENVIRONMENTS (CDPHE) LOW RISK DISCHARGE GUIDANCE POLICY FOR DISCHARGES OF UNCONTAMINATED GROUNDWATER TO LAND. IF CONSTRUCTION DEWATERING OPERATIONS ARE UNABLE TO MEET ALL CRITERIA, CONDITIONS, AND CONTROL MEASURE REQUIREMENTS OF THE LOW RISK DISCHARGE GUIDANCE POLICY, A COLORADO DISCHARGE PERMIT SYSTEM (CDPS) GENERAL PERMIT COG080000 WILL BE REQUIRED.
- CONTRACTOR SHALL BE RESPONSIBLE FOR THE REMOVAL OF ALL WASTE FROM THE CONSTRUCTION SITE FOR DISPOSAL IN ACCORDANCE WITH LOCAL AND STATE REGULATORY REQUIREMENTS. NO CONSTRUCTION DEBRIS, TREE SLASH, BUILDING MATERIAL WASTES, OR UNUSED BUILDING MATERIALS SHALL BE BURIED, DUMPED, OR DISCHARGED AT THE SITE.
- THE PERMIT HOLDER(S) SHALL BE RESPONSIBLE FOR THE REMOVAL OF ALL CONSTRUCTION DEBRIS, DIRT, TRASH, ROCK, SEDIMENT, SOIL, AND SAND THAT MAY ACCUMULATE IN ROADS, STORM DRAINS AND OTHER DRAINAGE CONVEYANCE SYSTEMS AND STORMWATER APPURTENANCES AS A RESULT OF SITE DEVELOPMENT.
- THE QUANTITY OF MATERIALS STORED ON THE PROJECT SITE SHALL BE LIMITED, AS MUCH AS PRACTICAL, TO THAT QUANTITY REQUIRED TO PERFORM THE WORK IN AN ORDERLY SEQUENCE. ALL MATERIALS STORED ON-SITE SHALL BE STORED IN A NEAT, ORDERLY MANNER, IN THEIR ORIGINAL CONTAINERS, WITH ORIGINAL MANUFACTURER'S LABELS.
- MATERIALS SHALL NOT BE TEMPORARILY PLACED OR STORED IN THE STREET, ALLEY, OR OTHER PUBLIC WAY UNLESS IN ACCORDANCE WITH AN APPROVED TRAFFIC CONTROL PLAN. APPROPRIATE CMS SHALL BE UTILIZED BASED ON SPECIFIC CONDITIONS AND CIRCUMSTANCES.
- BULK STORAGE (I.E., INDIVIDUAL CONTAINERS OF 55 GALLONS OR GREATER) OF ALLOWED PETROLEUM PRODUCTS OR OTHER ALLOWED LIQUID SHALL REQUIRE ADEQUATE SECONDARY CONTAINMENT OR EQUIVALENT PROTECTION TO CONTAIN ALL SPILLS ON-SITE AND TO PREVENT ANY SPILLED MATERIALS FROM ENTERING STATE WATERS, ANY SURFACE OR SUBSURFACE STORM DRAINAGE SYSTEM, OR OTHER FACILITIES.
- NO CHEMICAL(S) HAVING THE POTENTIAL TO BE RELEASED IN STORMWATER ARE TO BE STORED OR USED ON-SITE UNLESS PERMISSION FOR THE USE OF SUCH CHEMICAL(S) IS GRANTED IN WRITING BY THE ECM ADMINISTRATOR. IN GRANTING APPROVAL FOR THE USE OF SUCH CHEMICAL(S), SPECIAL CONDITIONS AND MONITORING MAY BE REQUIRED.
- ON AREAS OF EXPOSED SOIL, MINIMIZE DUST THROUGH THE APPROPRIATE APPLICATION OF WATER OR OTHER DUST SUPPRESSION TECHNIQUES. WATER APPLICATION MUST BE CONDUCTED IN A MANNER TO PREVENT DISCHARGE OFFSITE UNLESS AUTHORIZED BY A CDPS OR NATIONAL POLLUTANT DISCHARGE ELIMINATION SYSTEM (NPDES) PERMIT.
- ALL CONSTRUCTION TRAFFIC MUST ENTER/EXIT THE SITE ONLY AT APPROVED CONSTRUCTION ACCESS POINTS.
- FOR SITES WHERE A SOILS REPORT IS REQUIRED, THE APPROVED SOILS REPORT FOR THIS SITE SHALL BE CONSIDERED A PART OF THESE PLANS.
- PERMIT HOLDER(S) AND THEIR AGENTS SHALL COMPLY WITH THE "COLORADO WATER QUALITY CONTROL ACT"(TITLE 25, ARTICLE 8, CRS), AND THE "CLEAN WATER ACT"(33 USC 1344), IN ADDITION TO THE REQUIREMENTS OF THE LAND DEVELOPMENT CODE, DRAINAGE CRITERIA MANUAL, VOLUME 2, AND ENGINEERING CRITERIA MANUAL, ALL APPLICABLE LOCAL, STATE, AND FEDERAL PERMITS MUST BE OBTAINED PRIOR TO CONSTRUCTION. IN THE EVENT OF CONFLICTS BETWEEN THESE REQUIREMENTS AND OTHER LAWS, RULES, OR REGULATIONS OF OTHER FEDERAL, STATE, LOCAL, OR COUNTY AGENCIES, THE MOST RESTRICTIVE LAWS, RULES, OR REGULATIONS SHALL APPLY.
- AT LEAST TEN (10) DAYS PRIOR TO THE ANTICIPATED START OF CONSTRUCTION, FOR PROJECTS THAT WILL DISTURB ONE (1) ACRE OR MORE OR LESS THAN 1 ACRE AND PART OF A LARGER COMMON PLAN OF DEVELOPMENT OR SALE THAT WOULD DISTURB 1 OR MORE ACRES, THE PERMIT HOLDER(S) SHALL SUBMIT A PERMIT APPLICATION FOR STORMWATER DISCHARGE (COR400000 PERMIT) TO THE CDPHE WATER QUALITY DIVISION. THE APPLICATION CONTAINS CERTIFICATION OF COMPLETION OF A SWMP, OF WHICH THIS GEC PLAN MAY BE A PART. FOR INFORMATION OR APPLICATION MATERIALS CONTACT: COLORADO DEPARTMENT OF PUBLIC HEALTH AND ENVIRONMENT WATER QUALITY CONTROL DIVISION WQCD -PERMITS 4300 CHERRY CREEK DRIVE SOUTH DENVER, CO 80246-1530 ATTN: PERMITS UNIT



SITE MAP
SCALE: 1"=1,000'

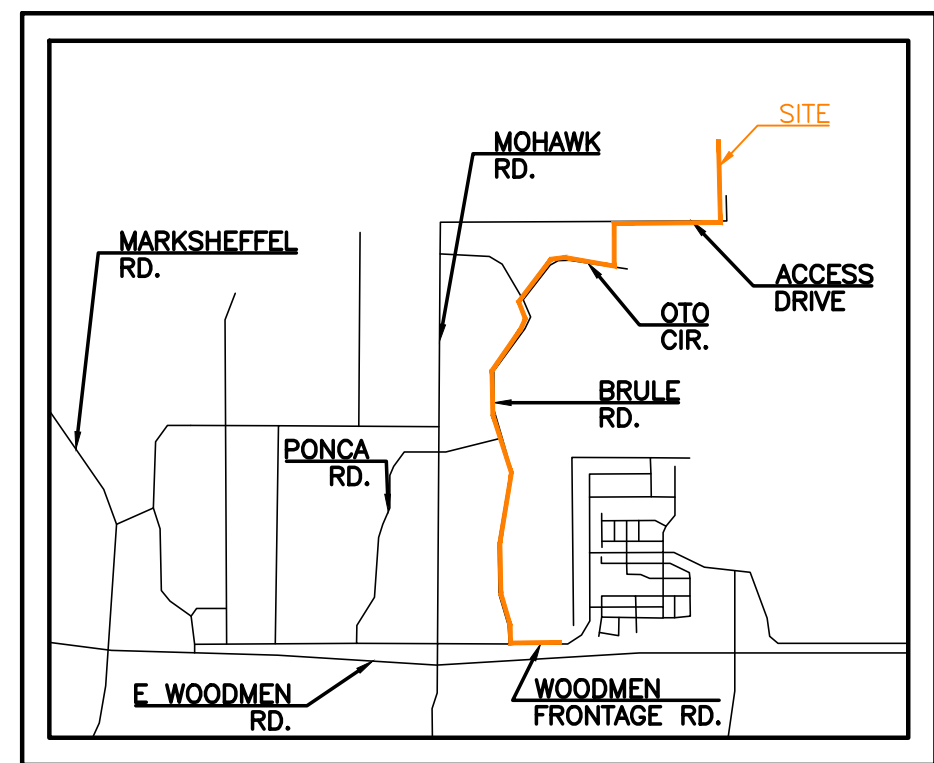


GENERAL NOTES

- IT SHALL BE THE RESPONSIBILITY OF THE CONTRACTOR TO VERIFY THE EXISTENCE AND LOCATION OF ALL UNDERGROUND UTILITIES ALONG THE SITE. THE OMISSION FROM OR THE INCLUSION OF UTILITY LOCATIONS ON THE PLANS IS NOT TO BE CONSIDERED AS THE NON-EXISTENCE OF OR A DEFINITE LOCATION OF EXISTING UNDERGROUND UTILITIES.
- THE CONTRACTOR WILL TAKE THE NECESSARY PRECAUTIONS TO PROTECT EXISTING UTILITIES, BUILDINGS, FENCES, AND ROADWAYS FROM DAMAGE DUE TO THIS OPERATION. ANY DAMAGE TO THE ABOVE WILL BE REPAIRED AT THE CONTRACTOR'S EXPENSE, AND ANY SERVICE DISRUPTION WILL BE SETTLED BY THE CONTRACTOR.
- AS DETERMINED BY THE FLOOD INSURANCE RATE MAP, COMMUNITY PANEL #S 08041C0545G & 08041C0561G, EFFECTIVE DATES DECEMBER 7, 2018, NO PORTION OF THIS SITE IS LOCATED WITHIN A DESIGNATED 100-YEAR F.E.M.A. FLOODPLAIN.
- NO BATCH PLANTS ARE PROPOSED FOR THIS PROJECT.
- ALL EXISTING UTILITY LOCATIONS HAVE BEEN SKETCHED IN FROM OTHER DRAWINGS AND ARE APPROXIMATE. THEY HAVE NOT BEEN SURVEYED.

EROSION CONTROL COST OPINION

1. 3.40 AC-SEEDING & MULCH @ \$785/AC	\$	2,669
2. 1 EA-FUEL SPILL KIT @ \$200.00/EA	\$	200
3. 10 LF-SEDIMENT CONTROL LOGS \$2.75/LF	\$	28
4. 40% MAINTENANCE AND REPLACEMENT	\$	1,159
TOTAL	\$	4,056



VICINITY MAP
N.T.S.

DESCRIPTION OF ACTIVITIES:

THE DEVELOPER PROPOSES TO INSTALL UNDERGROUND ELECTRIC UTILITIES AS WELL AS ASSOCIATED ELECTRIC VAULTS FROM AN AREA NORTH OF WOODMEN FRONTAGE ROAD AND SOUTH OF THE ELECTRIC SUBSTATION LOCATED AT 9167 MOHAWK ROAD, ALONG BRULE ROAD AND OTO CIRCLE. THE INSTALLATION TRAVELS WEST ALONG OTO CIRCLE FOR ABOUT HALF A MILE BEFORE TRAVELLING SOUTH ALONG BRULE ROAD FOR ABOUT 1 MILE AND ENDING NEAR THE INTERSECTION OF BRULE ROAD AND WOODMEN FRONTAGE ROAD. THE MAJORITY OF THIS PROJECT WILL BE INSTALLED BY OPEN CUT TRENCHING BUT DIRECTIONAL BORING WILL BE USED TO CROSS ROADS AND DRIVEWAYS. THE SITE CONSISTS OF APPROXIMATELY 3.40 ACRES OF UNDEVELOPED PRAIRIE LOCATED IN EL PASO COUNTY.

EROSION CONTROL MEASURES SHALL BE IMPLEMENTED IN A MANNER THAT WILL PROTECT PROPERTIES AND PUBLIC FACILITIES FROM THE ADVERSE EFFECTS OF EROSION AND SEDIMENTATION AS A RESULT OF CONSTRUCTION AND EARTHWORK ACTIVITIES. BRULE ROAD AND OTO ROAD WILL BE USED FOR ACCESS TO THE SITE. IT IS ANTICIPATED THAT CONSTRUCTION ACTIVITIES WILL OCCUR BETWEEN SPRING OF 2026 AND FALL OF 2026, AT WHICH POINT IT WILL BE CONSIDERED COMPLETED.

CONSTRUCTION PHASING IS ANTICIPATED TO OCCUR AS FOLLOWS:
PHASE 1:
 PRIOR TO START OF CONSTRUCTION, INITIAL EROSION CONTROL MEASURES TO BE INSTALLED INCLUDE SEDIMENT CONTROL LOG (SCL).
PHASE 2:
 ALL PREVIOUSLY INSTALLED BMP'S SHALL REMAIN IN PLACE UNTIL A LATER PHASE.

PHASE 3:
 ANY AREA THAT IS GOING TO REMAIN IN AN INTERIM STATE FOR MORE THAN 60 DAYS SHALL BE SEED IN ORDER TO ESTABLISH A VEGETATIVE COVER UNTIL THE FINAL LANDSCAPING IS INSTALLED. ALL TEMPORARY SOIL EROSION CONTROL MEASURES AND BMP'S SHALL BE MAINTAINED UNTIL PERMANENT SOIL EROSION CONTROL MEASURES ARE IMPLEMENTED AND VEGETATION HAS BEEN ESTABLISHED TO 70% ON AREAS NOT COVERED BY GRAVEL. ONCE VEGETATIVE COVER HAS BEEN ESTABLISHED AT 70% OF THE DISTURBED AREAS, SEDIMENT CONTROL LOG WILL BE REMOVED FROM ANY DIRT STOCKPILE AREAS. THE DIRT STOCKPILES (SP) WILL BE REMOVED AND RE-VEGETATED AS PART OF THIS PHASE.

PHASE 4:
 FINAL CONSTRUCTION ACTIVITIES HAVE BEEN COMPLETED AT THIS POINT. THE PERMANENT EROSION CONTROL MEASURES HAVE BEEN ESTABLISHED.

THE SOILS ON THIS SITE ARE NOTED AS ABOUT 25% BLAKELAKE LOAMY SAND (8), 5% BLAKELAND FLUVAQUENTIC HAPLAQUOLLS (9), AND 70% COLUMBINE GRAVELLY SANDY LOAM (19). THE SOILS ARE IN HYDROLOGIC SOIL GROUP A, THEREFORE, THERE ARE LOW RUNOFF POTENTIALS. THERE ARE NO WETLANDS ON THIS SITE.

THE SITE CONSISTS OF UNDEVELOPED LAND THAT HAS NATURAL VEGETATIVE COVER OF ABOUT 50% CONSISTING OF NATIVE GRASSES BASED ON AERIAL PHOTOS AND A SITE VISIT.

THERE ARE NO POTENTIAL POLLUTANTS EXISTING OR PROPOSED FOR STORAGE ON THIS SITE.

THIS SITE IS WITHIN THE SAND CREEK DRAINAGE BASIN. DRAINAGE TYPICALLY FLOWS FROM THE NORTH TOWARDS THE SOUTH ON THIS SITE.

THE PROPERTY OWNER OR OWNERS REPRESENTATIVE IS RESPONSIBLE FOR INSPECTING AND MAINTAINING THE SITE ON A REGULAR BASIS. INITIAL CRITERIA FOR THE OCCURRENCE OF INSPECTIONS IS AS FOLLOWS:
 ONCE EVERY 14 DAYS OR AFTER ANY PRECIPITATION OR SNOWMELT EVENT THAT SIGNIFICANT ENOUGH TO CAUSE SURFACE EROSION.
 A WRITTEN RECORD OF INSPECTIONS SHALL BE KEPT BY THE OWNER OR OWNERS REPRESENTATIVE AND MADE AVAILABLE TO THE COUNTY UPON REQUEST. THIS WILL CONTINUE UNTIL THE SITE IS STABILIZED AND THE STOCKPILE IS NO LONGER NEEDED.

SHEET INDEX

COVER SHEET	1 OF 6
SITE PLAN	2 OF 6
EROSION AND SEDIMENT CONTROL PLAN	4 OF 6
EROSION AND SEDIMENT CONTROL PLAN	4 OF 6
EROSION AND SEDIMENT CONTROL PLAN	5 OF 6
EROSION CONTROL DETAILS	6 OF 6

SITE DATA

OWNER/PETITIONER:
 MOUNTAIN VIEW ELECTRIC ASSOCIATION
 11140 E. WOODMAN RD
 PEYTON, CO 80931
 MR. DAVID WALDNER, (719) 495-2283

PREPARER:
 TERRA NOVA ENGINEERING, INC.
 721 S 23RD STREET
 COLORADO SPRINGS, CO 80904
 (719) 635-6422 OFFICE
 (719) 499-2255 MOBILE

AREA

TOTAL AREA TO BE CLEARED, EXCAVATED, GRADED OR DISTURBED IS 3.40± ACRES.

VOLUME

EARTHWORK VOLUMES: N/A

ENGINEER'S STATEMENT

THIS GRADING AND EROSION CONTROL PLAN WAS PREPARED UNDER MY DIRECTION AND SUPERVISION AND IS CORRECT TO THE BEST OF MY KNOWLEDGE AND BELIEF. SAID PLAN HAS BEEN PREPARED ACCORDING TO THE CRITERIA ESTABLISHED BY THE COUNTY FOR GRADING AND EROSION CONTROL PLANS. I ACCEPT RESPONSIBILITY FOR ANY LIABILITY CAUSED BY ANY NEGLIGENT ACTS, ERRORS, OR OMISSIONS ON MY PART IN PREPARING THIS REPORT.

JOHN FORNANDER, P.E. #66415
 FOR AND ON BEHALF OF TERRA NOVA ENGINEERING, INC.



OWNER'S STATEMENT

I, THE OWNER/DEVELOPER HAVE READ AND WILL COMPLY WITH THE REQUIREMENTS OF THE GRADING AND EROSION CONTROL PLAN.

OWNER NAME: _____ DATE: _____

EL PASO COUNTY APPROVAL

COUNTY PLAN REVIEW IS PROVIDED ONLY FOR GENERAL CONFORMANCE WITH COUNTY DESIGN CRITERIA. THE COUNTY IS NOT RESPONSIBLE FOR THE ACCURACY AND ADEQUACY OF THE DESIGN, DIMENSIONS, AND/OR ELEVATIONS WHICH SHALL BE CONFIRMED AT THE JOB SITE. THE COUNTY THROUGH THE APPROVAL OF THIS DOCUMENT ASSUMES NO RESPONSIBILITY FOR COMPLETENESS AND/OR ACCURACY OF THIS DOCUMENT.

FILED IN ACCORDANCE WITH THE REQUIREMENTS OF THE EL PASO COUNTY LAND DEVELOPMENT CODE, DRAINAGE CRITERIA MANUAL VOLUMES 1 AND 2, AND ENGINEERING CRITERIA MANUAL AS AMENDED.

IN ACCORDANCE WITH ECM SECTION 1.12, THESE CONSTRUCTION DOCUMENTS WILL BE VALID FOR CONSTRUCTION FOR A PERIOD OF 2 YEARS FROM THE DATE SIGNED BY THE EL PASO COUNTY ENGINEER. IF CONSTRUCTION HAS NOT STARTED WITHIN THOSE 2 YEARS, THE PLANS WILL NEED TO BE RESUBMITTED FOR APPROVAL, INCLUDING PAYMENT OF REVIEW FEES AT THE PLANNING AND COMMUNITY DEVELOPMENT DIRECTORS DISCRETION.

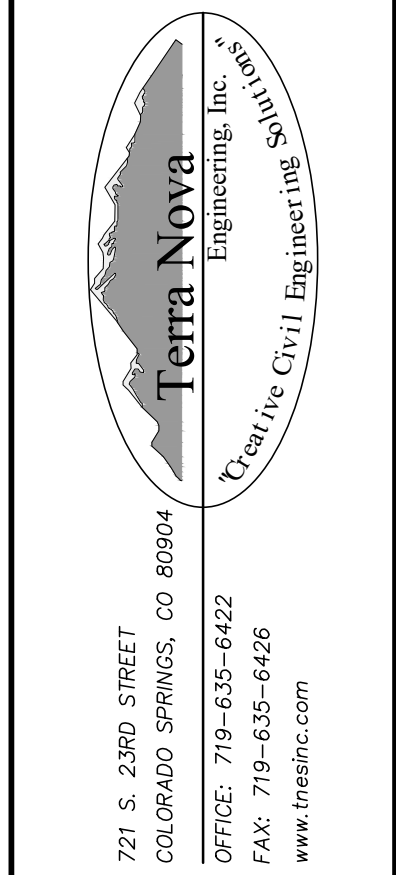
JOSHUA J. PALMER, P.E.
 COUNTY ENGINEER / ECM ADMINISTRATOR

DATE _____

REVISIONS	NO.	DESCRIPTION	DATE

UNTIL SUCH TIME AS THESE DRAWINGS ARE APPROVED BY THE AGENCIES, REMOVING OR CHANGING ANY INFORMATION FROM THESE DRAWINGS FOR THEIR USE ONLY FOR THE PURPOSES DESIGNATED BY WRITTEN AUTHORIZATION.

PREPARED FOR:
MVEA
 ATTN: DAVE WALDNER
 11140 E. WOODMEN RD
 PEYTON, CO 80831
 (719) 495-2283



721 S. 23RD STREET
 COLORADO SPRINGS, CO 80904
 OFFICE: 719-635-6422
 FAX: 719-635-6426
 www.tnenginc.com

VOLLMER SUBSTATION WEST CIRCUIT

GRADING, EROSION, & SEDIMENT CONTROL PLAN
 COVER SHEET

DESIGNED BY JF
 DRAWN BY JF
 CHECKED BY _____

H-SCALE AS SHOWN
 V-SCALE NA

JOB NO. 2583.00
 DATE ISSUED 03/18/26
 SHEET NO. 1 OF 6

PCD FILE NO. CDR2513

STANDARD NOTES FOR EL PASO COUNTY CONSTRUCTION PLANS

(SOME OF THESE NOTES MAY NOT BE RELEVANT TO THESE PLANS)

1. ALL DRAINAGE AND ROADWAY CONSTRUCTION SHALL MEET THE STANDARDS AND SPECIFICATIONS OF THE CITY OF COLORADO SPRINGS/EL PASO COUNTY DRAINAGE CRITERIA MANUAL, VOLUMES 1 AND 2, AND THE EL PASO COUNTY ENGINEERING CRITERIA MANUAL.

2. CONTRACTOR SHALL BE RESPONSIBLE FOR THE NOTIFICATION AND FIELD NOTIFICATION OF ALL EXISTING UTILITIES, WHETHER SHOWN ON THE PLANS OR NOT, BEFORE BEGINNING CONSTRUCTION. LOCATION OF EXISTING UTILITIES SHALL BE VERIFIED BY THE CONTRACTOR PRIOR TO CONSTRUCTION. CALL 811 TO CONTACT THE UTILITY NOTIFICATION CENTER OF COLORADO (UNCC).

3. CONTRACTOR SHALL KEEP A COPY OF THESE APPROVED PLANS, THE GRADING AND EROSION CONTROL PLAN, THE STORMWATER MANAGEMENT PLAN (SWMP), THE SOILS AND GEOTECHNICAL REPORT, AND THE APPROPRIATE DESIGN AND CONSTRUCTION STANDARDS AND SPECIFICATIONS AT THE JOB SITE AT ALL TIMES, INCLUDING THE FOLLOWING:

- A. EL PASO COUNTY ENGINEERING CRITERIA MANUAL (ECM)
- B. CITY OF COLORADO SPRINGS/EL PASO COUNTY DRAINAGE CRITERIA MANUAL, VOLUMES 1 AND 2
- C. COLORADO DEPARTMENT OF TRANSPORTATION (CDOT) STANDARD SPECIFICATIONS FOR ROAD AND BRIDGE CONSTRUCTION
- D. CDOT M & S STANDARDS

4. NOTWITHSTANDING ANYTHING DEPICTED IN THESE PLANS IN WORDS OR GRAPHIC REPRESENTATION, ALL DESIGN AND CONSTRUCTION RELATED TO ROADS, STORM DRAINAGE AND EROSION CONTROL SHALL CONFORM TO THE STANDARDS AND REQUIREMENTS OF THE MOST RECENT VERSION OF THE RELEVANT ADOPTED EL PASO COUNTY STANDARDS, INCLUDING THE LAND DEVELOPMENT CODE, THE ENGINEERING CRITERIA MANUAL, THE DRAINAGE CRITERIA MANUAL, AND THE DRAINAGE CRITERIA MANUAL VOLUME 2. ANY DEVIATIONS FROM REGULATIONS AND STANDARDS MUST BE REQUESTED, AND APPROVED, IN WRITING. ANY MODIFICATIONS NECESSARY TO MEET CRITERIA AFTER-THE-FACT WILL BE ENTIRELY THE DEVELOPER'S RESPONSIBILITY TO RECTIFY.

5. IT IS THE DESIGN ENGINEER'S RESPONSIBILITY TO ACCURATELY SHOW EXISTING CONDITIONS, BOTH ONSITE AND OFFSITE, ON THE CONSTRUCTION PLANS. ANY MODIFICATIONS NECESSARY DUE TO CONFLICTS, OMISSIONS, OR CHANGED CONDITIONS WILL BE ENTIRELY THE DEVELOPER'S RESPONSIBILITY TO RECTIFY.

6. CONTRACTOR SHALL SCHEDULE A PRE-CONSTRUCTION MEETING WITH EL PASO COUNTY PLANNING AND COMMUNITY DEVELOPMENT (PCD) - INSPECTIONS, PRIOR TO STARTING CONSTRUCTION.

7. IT IS THE CONTRACTOR'S RESPONSIBILITY TO UNDERSTAND THE REQUIREMENTS OF ALL JURISDICTIONAL AGENCIES AND TO OBTAIN ALL REQUIRED PERMITS, INCLUDING BUT NOT LIMITED TO EL PASO COUNTY EROSION AND STORMWATER QUALITY CONTROL PERMIT (ESQCP), REGIONAL BUILDING FLOODPLAIN DEVELOPMENT PERMIT, U.S. ARMY CORPS OF ENGINEERS-ISSUED 401 AND/OR 404 PERMITS, AND COUNTY AND STATE FUGITIVE DUST PERMITS.

8. CONTRACTOR SHALL NOT DEVIATE FROM THE PLANS WITHOUT FIRST OBTAINING WRITTEN APPROVAL FROM THE DESIGN ENGINEER AND PCD. CONTRACTOR SHALL NOTIFY THE DESIGN ENGINEER IMMEDIATELY UPON DISCOVERY OF ANY ERRORS OR INCONSISTENCIES.

9. ALL STORM DRAIN PIPE SHALL BE CLASS III RCP UNLESS OTHERWISE NOTED AND APPROVED BY PCD.

10. CONTRACTOR SHALL COORDINATE GEOTECHNICAL TESTING PER ECM STANDARDS. PAVEMENT DESIGN SHALL BE APPROVED BY EL PASO COUNTY PCD PRIOR TO PLACEMENT OF CURB AND GUTTER AND PAVEMENT.

11. ALL CONSTRUCTION TRAFFIC MUST ENTER/EXIT THE SITE AT APPROVED CONSTRUCTION ACCESS POINTS.

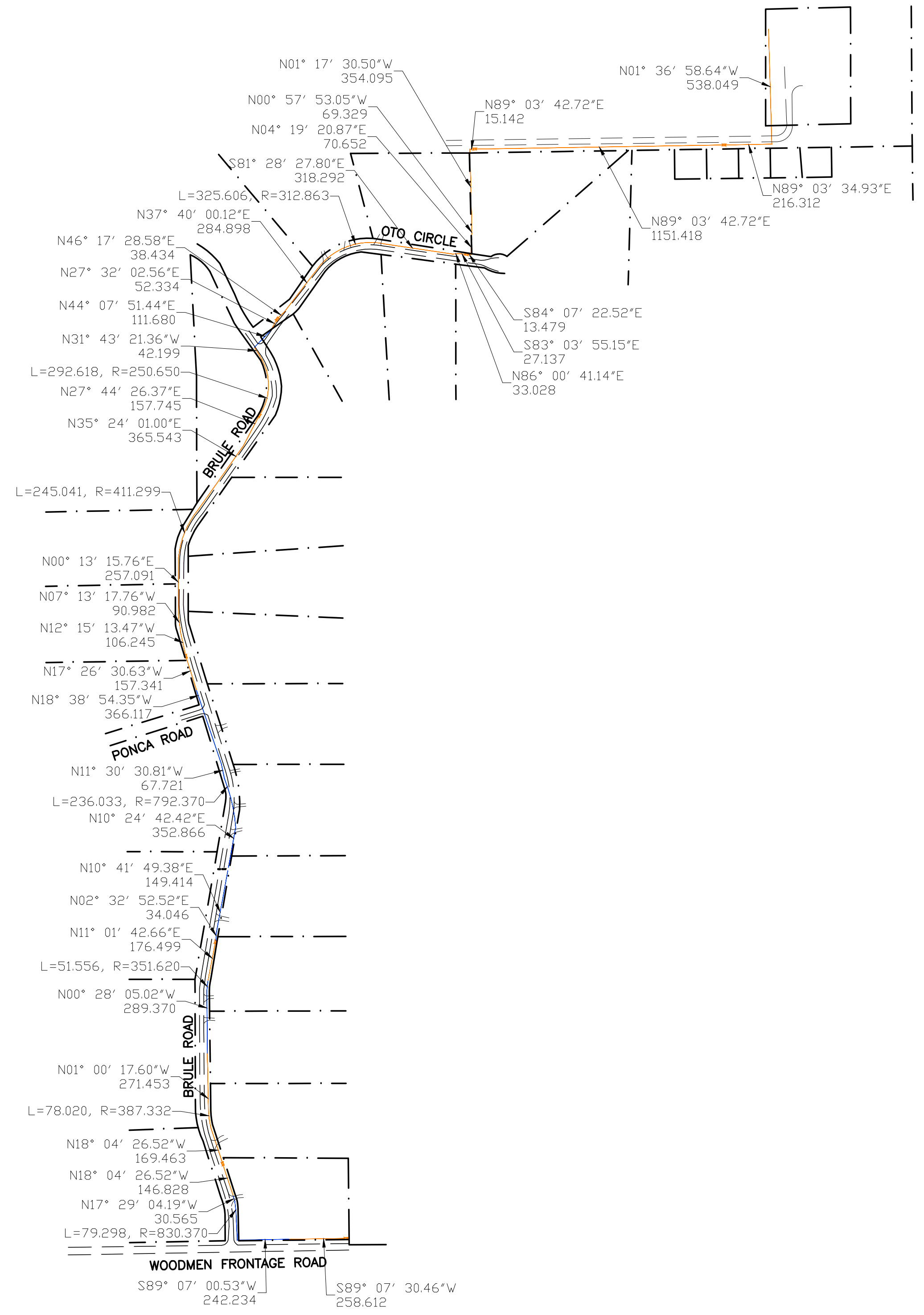
12. SIGHT VISIBILITY TRIANGLES AS IDENTIFIED IN THE PLANS SHALL BE PROVIDED AT ALL INTERSECTIONS. OBSTRUCTIONS GREATER THAN 18 INCHES ABOVE FLOWLINE ARE NOT ALLOWED WITHIN SIGHT TRIANGLES.

13. SIGNING AND STRIPING SHALL COMPLY WITH EL PASO COUNTY DOT AND MUTCD CRITERIA. IF APPLICABLE, ADDITIONAL SIGNING AND STRIPING NOTES WILL BE PROVIDED.]

14. CONTRACTOR SHALL OBTAIN ANY PERMITS REQUIRED BY EL PASO COUNTY DOT, INCLUDING WORK WITHIN THE RIGHT-OF-WAY AND SPECIAL TRANSPORT PERMITS.

15. THE LIMITS OF CONSTRUCTION SHALL REMAIN WITHIN THE PROPERTY LINE UNLESS OTHERWISE NOTED. THE OWNER/DEVELOPER SHALL OBTAIN WRITTEN PERMISSION AND EASEMENTS, WHERE REQUIRED, FROM ADJOINING PROPERTY OWNER(S) PRIOR TO ANY OFF-SITE DISTURBANCE, GRADING, OR CONSTRUCTION.

16. EL PASO COUNTY DOES NOT OWN AND IS NOT RESPONSIBLE FOR THE UNDERDRAINS OR GROUNDWATER DISCHARGE SYSTEMS SHOWN ON THESE PLANS AND ASSUMES NO LIABILITY FOR WATER RIGHTS ADMINISTRATION BY APPROVING THESE PLANS. MAINTENANCE AND WATER RIGHTS ARE THE RESPONSIBILITY OF THE DEVELOPER.

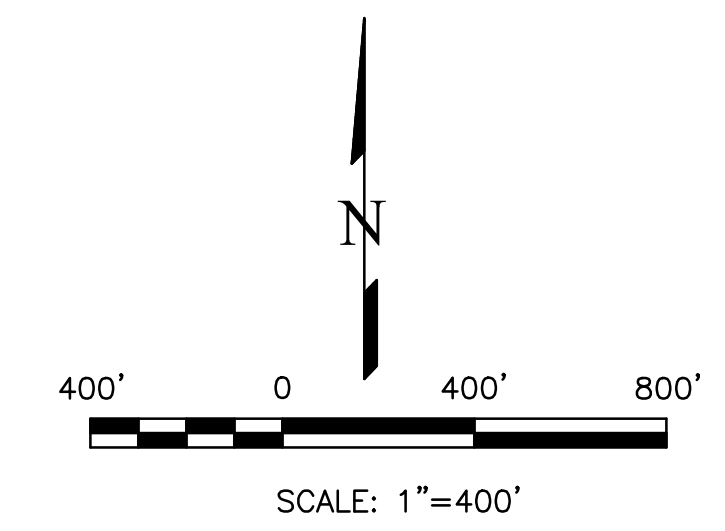
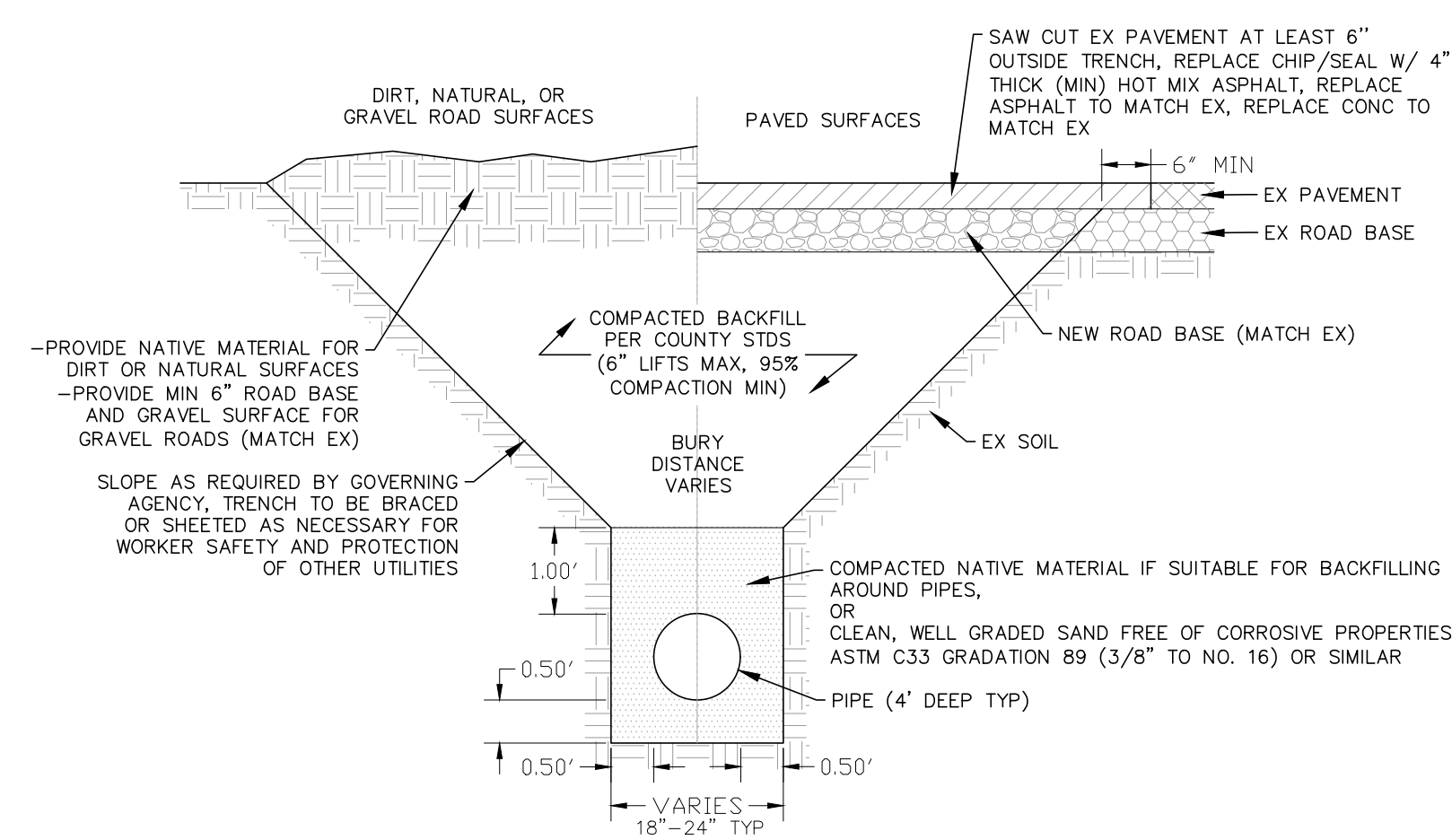


GRADING PLAN NOTES

1. PROJECT LOCATION IS IN EL PASO COUNTY COLORADO. APPROXIMATE SITE LOCATION IS AT LATITUDE 38.95586°, LONGITUDE -104.65214°.
2. ALL MEASUREMENTS ARE IN FEET, UNLESS SPECIFIED OTHERWISE.
3. FINAL STABILIZATION REQUIREMENTS SHALL BE BASED ON THE REQUIREMENTS OF THE STORM WATER POLLUTION PREVENTION PLAN.
4. THE CONTRACTOR SHALL VERIFY ALL EXISTING CONDITIONS, UTILITIES AND CULVERTS PRIOR TO CONSTRUCTION. THE CONTRACTOR SHALL INFORM THE ENGINEER OF ANY DISCREPANCIES BETWEEN THE EXISTING CONDITIONS AND THE PLANS.
5. CONTRACTOR TO PROTECT EXISTING UTILITIES AND MAINTAIN EXISTING DRAINAGE PATTERNS AT ALL TIMES.
6. CONTRACTOR TO VERIFY RIGHT OF WAY LIMITS PRIOR TO CONSTRUCTION.
7. EXISTING FEATURES (FENCE, MAILBOX, SIGN, ETC.) THAT ARE DISTURBED AS PART OF THE TEMPORARY IMPROVEMENT SHALL BE REINSTALLED OR REPLACED IN A CONDITION EQUAL TO OR BETTER THAN THE PRECONSTRUCTION CONDITION.
8. CONTRACTOR SHALL CALL 811, ONE CALL ENTITIES PRIOR TO CONSTRUCTION. ALL HAZARDS SHALL BE ASSESSED PRIOR TO CONSTRUCTION.
9. EXCAVATED SOIL SHALL BE PLACED ON THE UPSTREAM SIDE OF THE TRENCH.
10. SOIL WILL BE PLACED BESIDE THE TRENCH WHEN IT IS DUG UP AND PLACED BACK IN THE TRENCH ONCE WORK IN THAT AREA IS COMPLETED.
11. IT HAS BEEN REQUIRED THAT DISTANCE AND BEARING CALLOUTS BE ADDED TO THIS SHEET. THE DESIGN ENGINEER DOES NOT CONSIDER THEM TO BE USEFUL TO THESE PLANS.

LEGEND

- PROPOSED U/G ELECTRIC BY OPEN CUT EXCAVATION
- PROPOSED U/G ELEC BY DIRECTIONAL BORE (APPROXIMATE LOCATIONS)
- - - EXISTING PROPERTY LINE/ROW
- - - EXISTING ASPHALT
- - - LIMITS OF DISTURBANCE/CONSTRUCTION



THIS DESIGN WAS PREPARED UNDER MY DIRECT SUPERVISION FOR AND ON BEHALF OF TERRA NOVA ENGINEERING, INC.

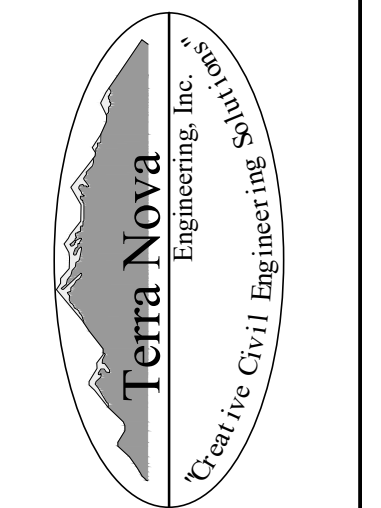


JOHN FORLANDER, P.E.
COLORADO P.E. NO. 66415

REVISIONS NO.	DESCRIPTION	DATE

UNTIL SUCH TIME AS THESE DRAWINGS ARE APPROVED BY THE APPLICABLE AGENCIES, THESE DRAWINGS ARE NOT TO BE USED FOR ANY PURPOSES DESIGNATED BY WRITTEN AUTHORIZATION.

PREPARED FOR:
MVEA
ATTN: DAVE WALDNER
11140 E. WOODMEN RD
PEYTON, CO 80831
(719) 495-2283

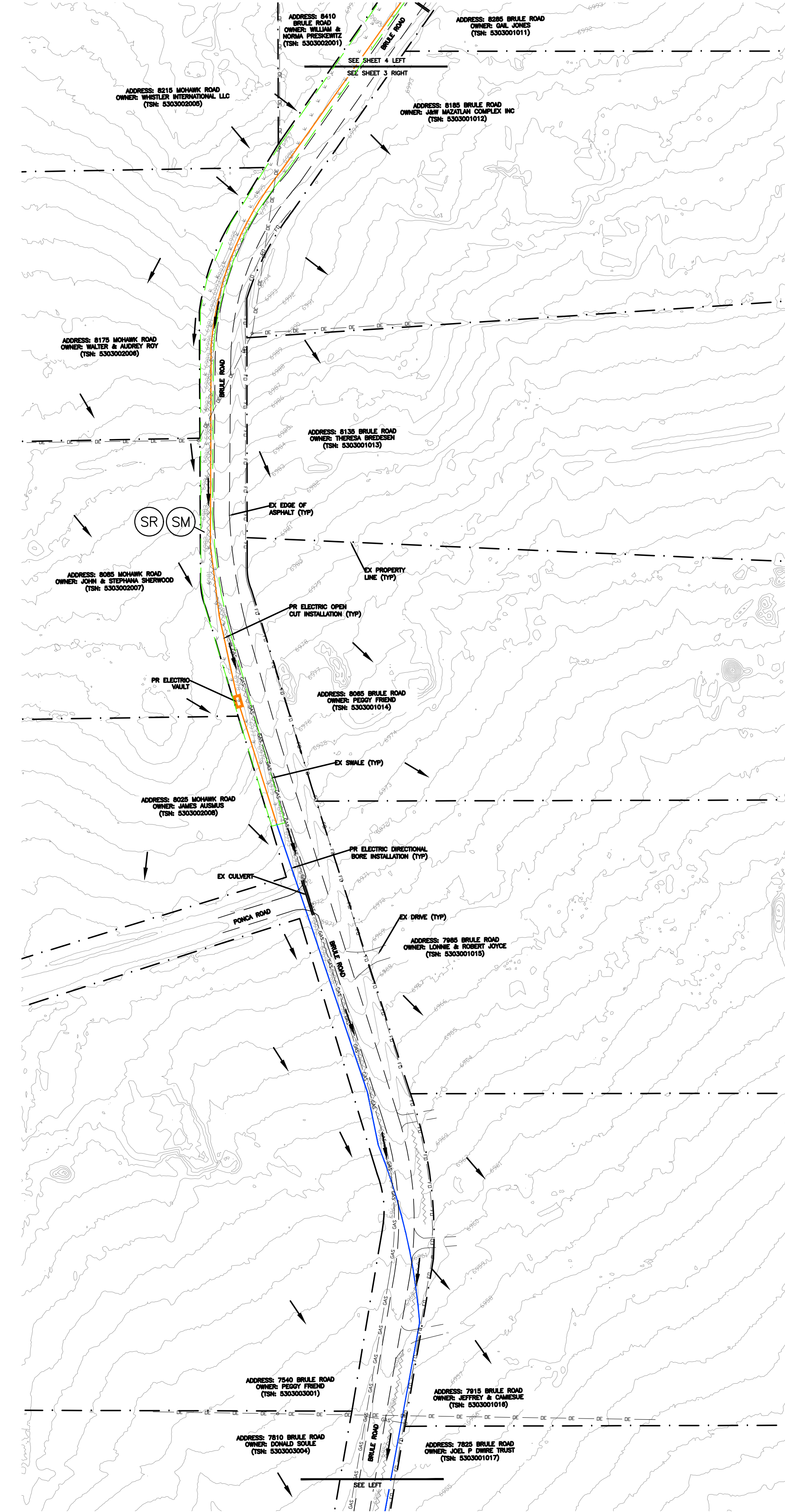
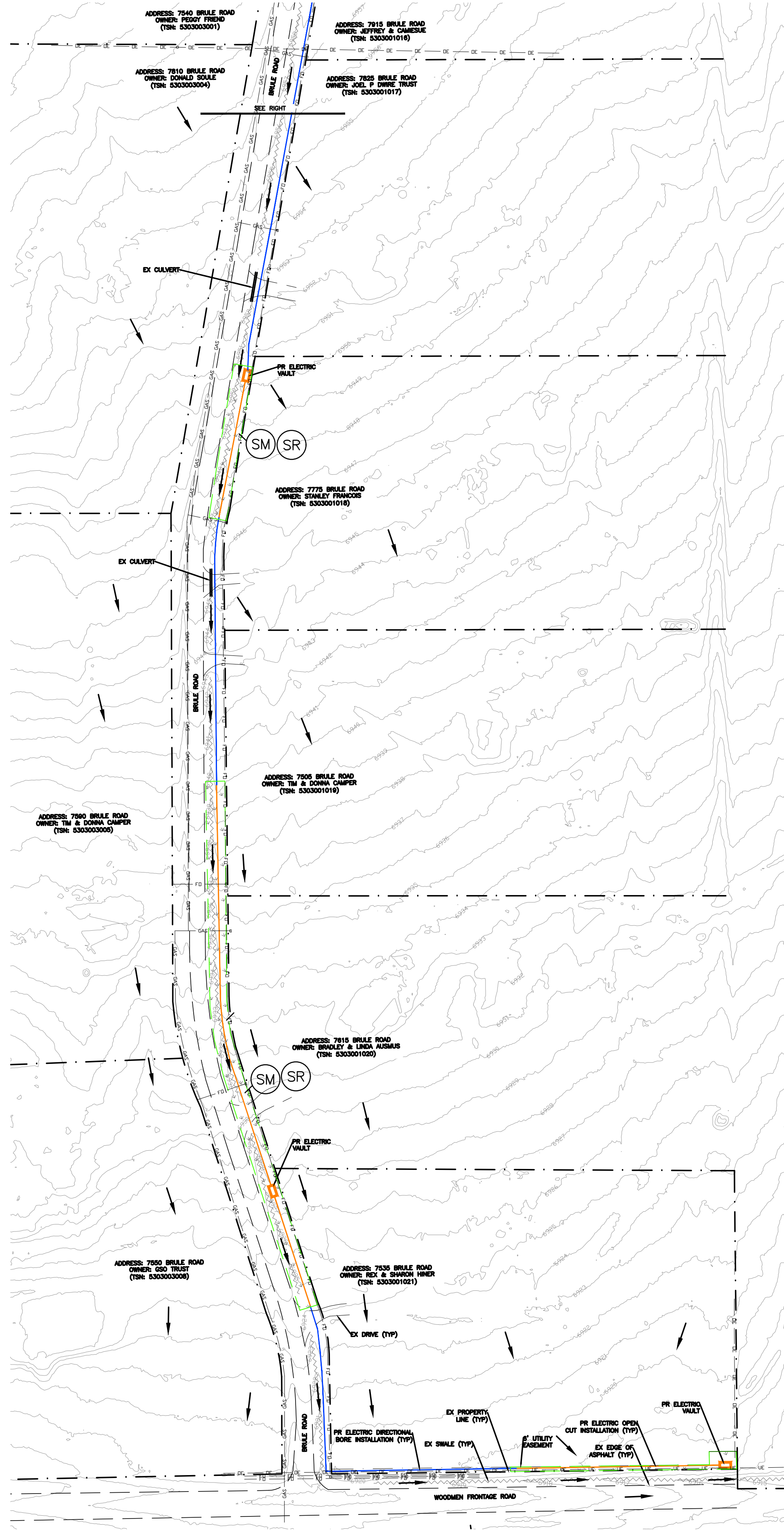


721 S. 29RD STREET
COLORADO SPRINGS, CO 80904
OFFICE: 719-635-6422
FAX: 719-635-6426
www.tneng.com

VOLLMER SUBSTATION WEST CIRCUIT

GRADING, EROSION, & SEDIMENT CONTROL PLAN
SITE MAP

DESIGNED BY	JF
DRAWN BY	JF
CHECKED BY	
H-SCALE	AS SHOWN
V-SCALE	NA
JOB NO.	2583.00
DATE ISSUED	03/18/26
SHEET NO.	2 OF 6



EROSION CONTROL LEGEND

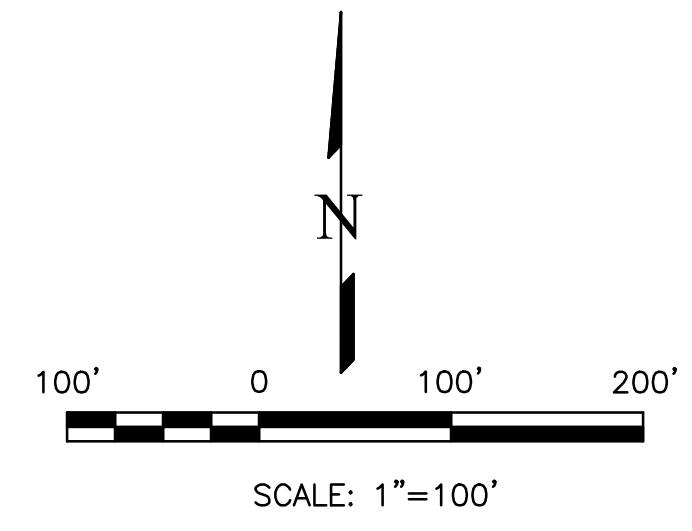
KEY	TITLE	SYMBOL
FINAL (SM)	PERMANENT SEEDING AND MULCHING (FINAL)	[Green dashed line]
FINAL (SR)	SURFACE ROUGHENING (INTERIM/FINAL)	[Green dashed line]

LEGEND

- EXISTING ROADSIDE DITCH
- LIMITS OF DISTURBANCE/CONSTRUCTION
- EXISTING 2' CONTOUR
- EXISTING FLOW DIRECTION
- PROPOSED U/G ELECTRIC BY OPEN CUT EXCAVATION
- PROPOSED U/G ELEC BY DIRECTIONAL BORE (APPROXIMATE LOCATIONS)
- EXISTING UNDERGROUND FIBER OPTIC LINE
- EXISTING UNDERGROUND DATA LINE
- EXISTING OVERHEAD ELECTRIC LINE
- EXISTING UNDERGROUND ELECTRIC LINE
- EXISTING GAS LINE
- EXISTING WATER LINE
- EXISTING PROPERTY LINE/ROW

GENERAL NOTES

1. CONTRACTOR TO MARK UP PLAN SHOWING ACTUAL FIELD INSTALLATION OF EROSION CONTROL BMPs.
2. BROADCAST SEEDING SHALL BE PLACED OVER DISTURBED AREAS ONCE THE CONSTRUCTION IS DONE. ALL AREAS TO BE VEGETATED WITH SEEDING SHOULD ALSO BE TEMPORARILY STABILIZED VIA SURFACE ROUGHENING OR SOME OTHER MEANS.
3. TOTAL LIMITS OF DISTURBANCE ESTIMATED TO BE APPROXIMATELY 3.40 AC.
4. WHEN WORK HAS BEEN COMPLETED, CONTRACTOR SHALL RETURN ANY DISTURBED AREAS TO THEIR ORIGINAL GRADES.
5. MAX ALLOWABLE EXCAVATED/STOCKPILED SLOPE IS 2:1.
6. BRULE ROAD, WOODMEN FRONTAGE ROAD AND OTO CIRCLE WILL BE USED FOR ACCESS TO THE PROJECT. THESE ROADS WILL BE CLEARED/SWEPT AS NECESSARY TO REMOVE ANY SIGNIFICANT SEDIMENT ACCUMULATION AND PREVENT MIGRATION OF UNEVEN DIRT CLOUDS/MUD.
7. PROPERTY LINES SHOWN ON THE PLANS ARE APPROXIMATE.
8. WORK ALONG THIS LINE WILL BE DONE WITHIN A 20' MVEA EASEMENT, OUTSIDE OF THE PUBLIC ROW.
9. VEGETATIVE COVER IS APPROXIMATELY 50% CONSISTING OF NATIVE GRASSES.
10. AS DETERMINED BY THE FLOOD INSURANCE RATE MAP, COMMUNITY PANEL # 08041005336, EFFECTIVE DATES DECEMBER 7, 2018, NO PORTION OF THIS SITE IS LOCATED WITHIN A DESIGNATED 100-YEAR F.E.M.A. FLOODPLAIN.
11. THE CONTRACTOR MUST RETURN THE ENTIRE SITE TO PRE CONSTRUCTION CONDITIONS OR BETTER CONDITIONS.
12. SURFACE ROUGHEN ALL SEED AND MULCH AREAS.



THIS DESIGN WAS PREPARED UNDER MY DIRECT SUPERVISION FOR AND ON BEHALF OF TERRA NOVA ENGINEERING, INC.

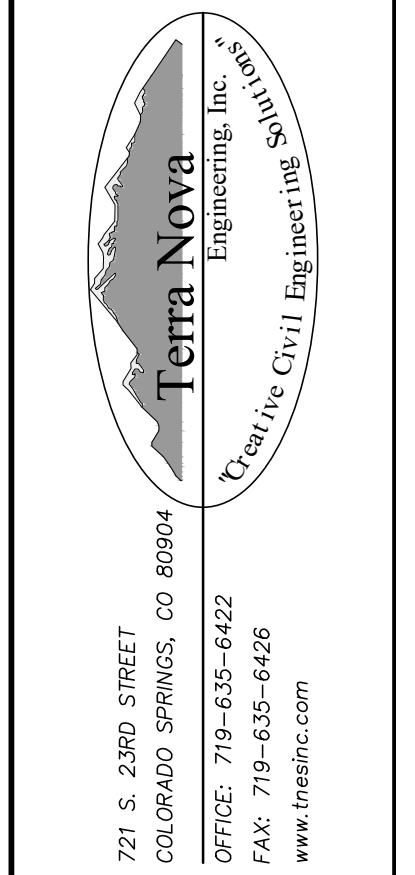


JOHN FORLANDER, P.E.
COLORADO P.E. NO. 66415

REVISIONS	NO.	DESCRIPTION	DATE

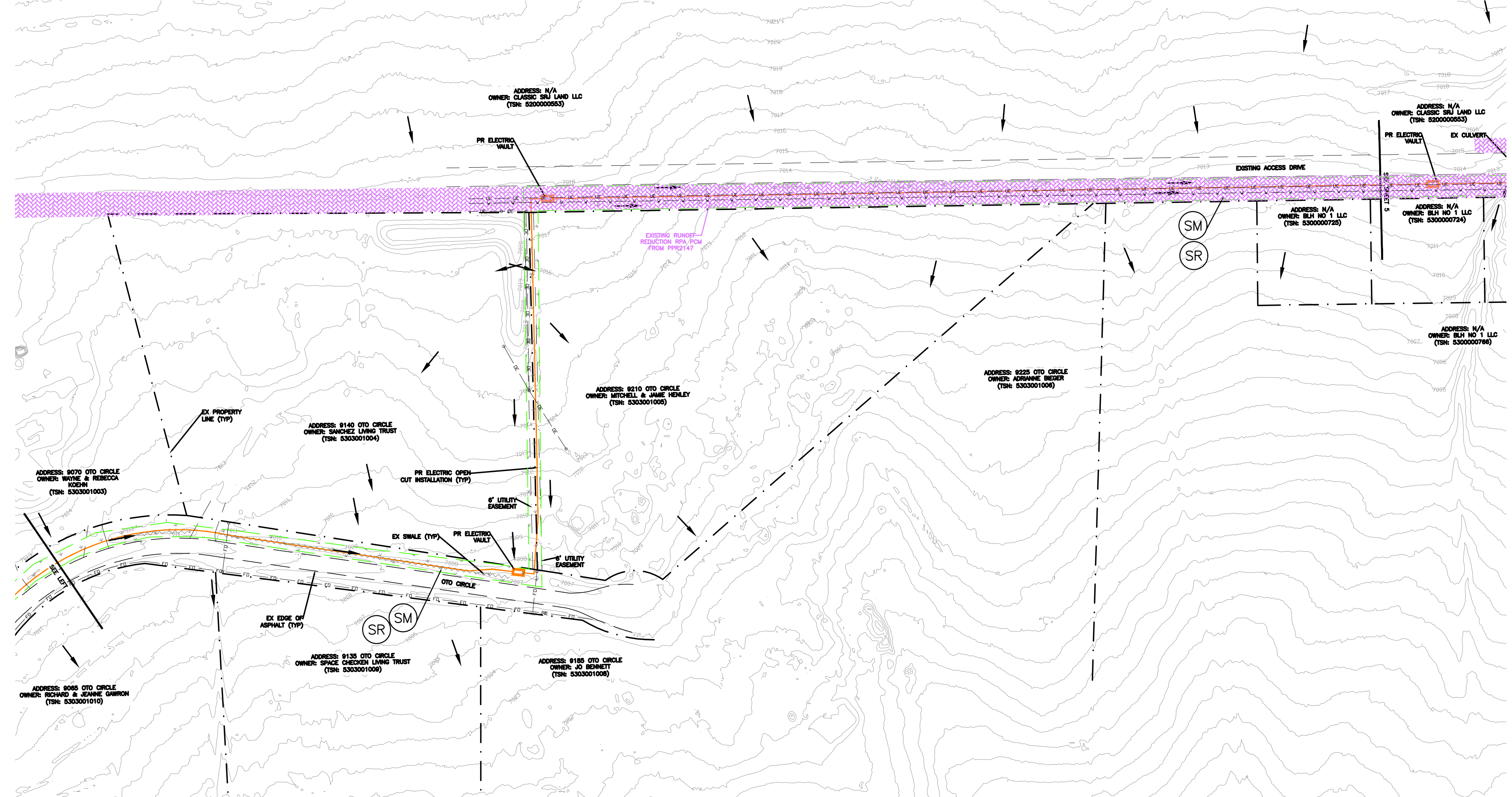
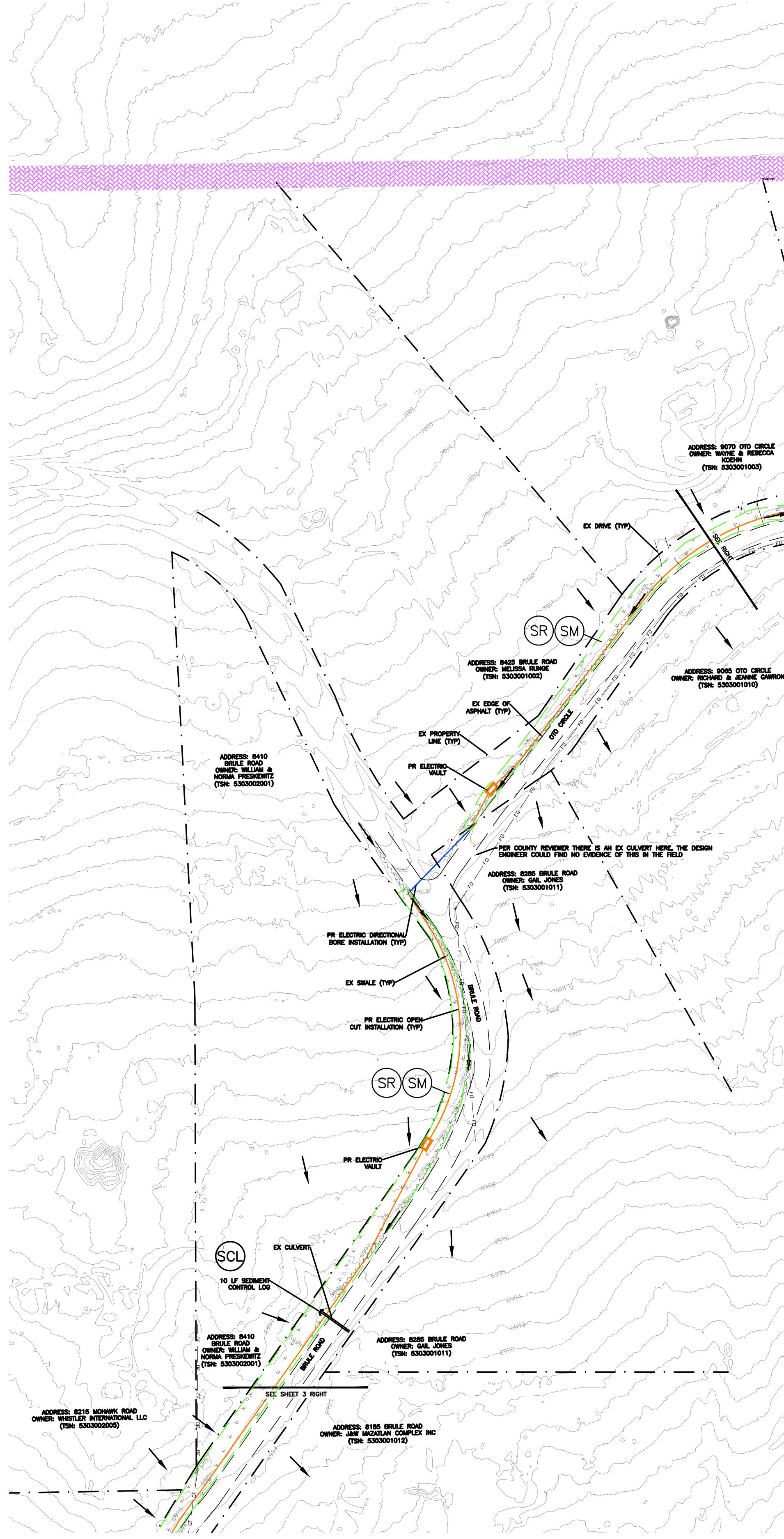
UNTIL SUCH TIME AS THESE DRAWINGS ARE APPROVED BY THE APPROPRIATE AGENCIES, THIS DRAWING IS NOT TO BE USED FOR ANY PURPOSES DESIGNATED BY WRITTEN AUTHORIZATION.

PREPARED FOR:
MVEA
ATTN: DAVE WALDMER
11140 E. WOODMEN RD
PEYTON, CO 80831
(719) 495-2283



VOLLMER SUBSTATION WEST CIRCUIT
GRADING, EROSION, & SEDIMENT CONTROL PLAN
EROSION CONTROL PLAN

DESIGNED BY	JF
DRAWN BY	JF
CHECKED BY	
H-SCALE	AS SHOWN
V-SCALE	NA
JOB NO.	2583.00
DATE ISSUED	03/18/26
SHEET NO.	3 OF 6



EROSION CONTROL LEGEND

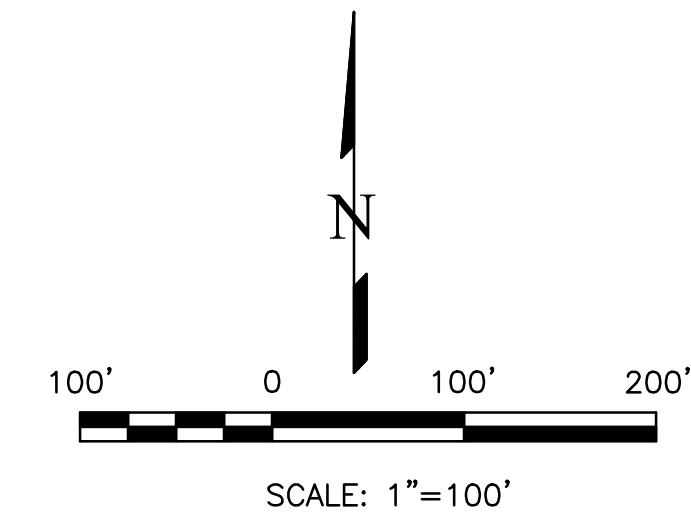
KEY	TITLE	SYMBOL
FINAL	PERMANENT SEEDING AND MULCHING (FINAL)	
INTERIM	SEDIMENT CONTROL LOG (INTERIM)	
FINAL	SURFACE ROUGHENING (INTERIM/FINAL)	

LEGEND

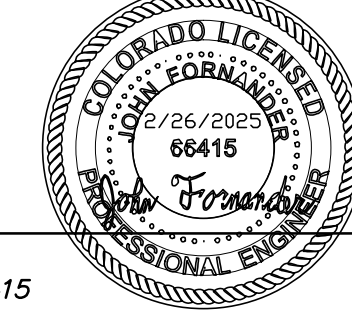
	EXISTING ROADSIDE DITCH
	LIMITS OF DISTURBANCE/CONSTRUCTION
	EXISTING 2' CONTOUR
	EXISTING FLOW DIRECTION
	PROPOSED U/G ELECTRIC BY OPEN CUT EXCAVATION
	PROPOSED U/G ELEC BY DIRECTIONAL BORE (APPROXIMATE LOCATIONS)
	FO - EXISTING UNDERGROUND FIBER OPTIC LINE
	TEL - EXISTING UNDERGROUND DATA LINE
	OE - EXISTING OVERHEAD ELECTRIC LINE
	UE - EXISTING UNDERGROUND ELECTRIC LINE
	GAS - EXISTING GAS LINE
	W - EXISTING WATER LINE
	EXISTING PROPERTY LINE/ROW

GENERAL NOTES

- CONTRACTOR TO MARK UP PLAN SHOWING ACTUAL FIELD INSTALLATION OF EROSION CONTROL BMPs.
- BROADCAST SEEDING SHALL BE PLACED OVER DISTURBED AREAS ONCE THE CONSTRUCTION IS DONE. ALL AREAS TO BE VEGETATED WITH SEEDING SHOULD ALSO BE TEMPORARILY STABILIZED VIA SURFACE ROUGHENING OR SOME OTHER MEANS.
- TOTAL LIMITS OF DISTURBANCE ESTIMATED TO BE APPROXIMATELY 3.40 AC.
- WHEN WORK HAS BEEN COMPLETED, CONTRACTOR SHALL RETURN ANY DISTURBED AREAS TO THEIR ORIGINAL GRADES.
- MAX ALLOWABLE EXCAVATED/STOCKPILED SLOPE IS 2:1.
- BRULE ROAD, WOODMEN FRONTAGE ROAD AND OTO CIRCLE WILL BE USED FOR ACCESS TO THE PROJECT. THESE ROADS WILL BE CLEARED/SWEPT AS NECESSARY TO REMOVE ANY SIGNIFICANT SEDIMENT ACCUMULATION AND PREVENT MIGRATION OF UNEVEN DIRT CLOUDS/MUD.
- PROPERTY LINES SHOWN ON THE PLANS ARE APPROXIMATE.
- WORK ALONG THIS LINE WILL BE DONE WITHIN A 20' MVEA EASEMENT, OUTSIDE OF THE PUBLIC ROW.
- VEGETATIVE COVER IS APPROXIMATELY 50% CONSISTING OF NATIVE GRASSES.
- AS DETERMINED BY THE FLOOD INSURANCE RATE MAP, COMMUNITY PANEL # 08041C0533G, EFFECTIVE DATES DECEMBER 7, 2018, NO PORTION OF THIS SITE IS LOCATED WITHIN A DESIGNATED 100-YEAR F.E.M.A. FLOODPLAIN.
- THE CONTRACTOR MUST RETURN THE ENTIRE SITE TO PRE CONSTRUCTION CONDITIONS OR BETTER CONDITIONS.
- SURFACE ROUGHEN ALL SEED AND MULCH AREAS.



THIS DESIGN WAS PREPARED UNDER MY DIRECT SUPERVISION FOR AND ON BEHALF OF TERRA NOVA ENGINEERING, INC.

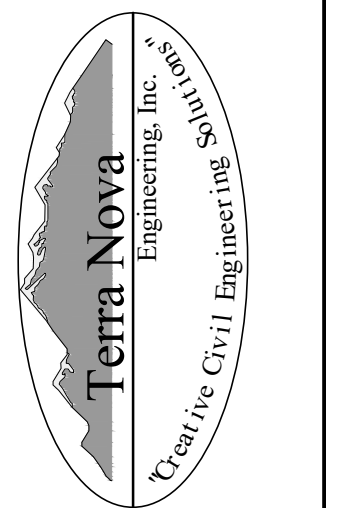


JOHN FORLANDER, P.E.
COLORADO P.E. NO. 66415

REVISIONS	NO.	DESCRIPTION	DATE

UNTIL SUCH TIME AS THESE DRAWINGS ARE APPROVED BY THE APPROPRIATE REVIEWING AGENCIES, THIS DRAWING IS NOT TO BE USED FOR ANY PURPOSES DESIGNATED BY WRITTEN AUTHORIZATION.

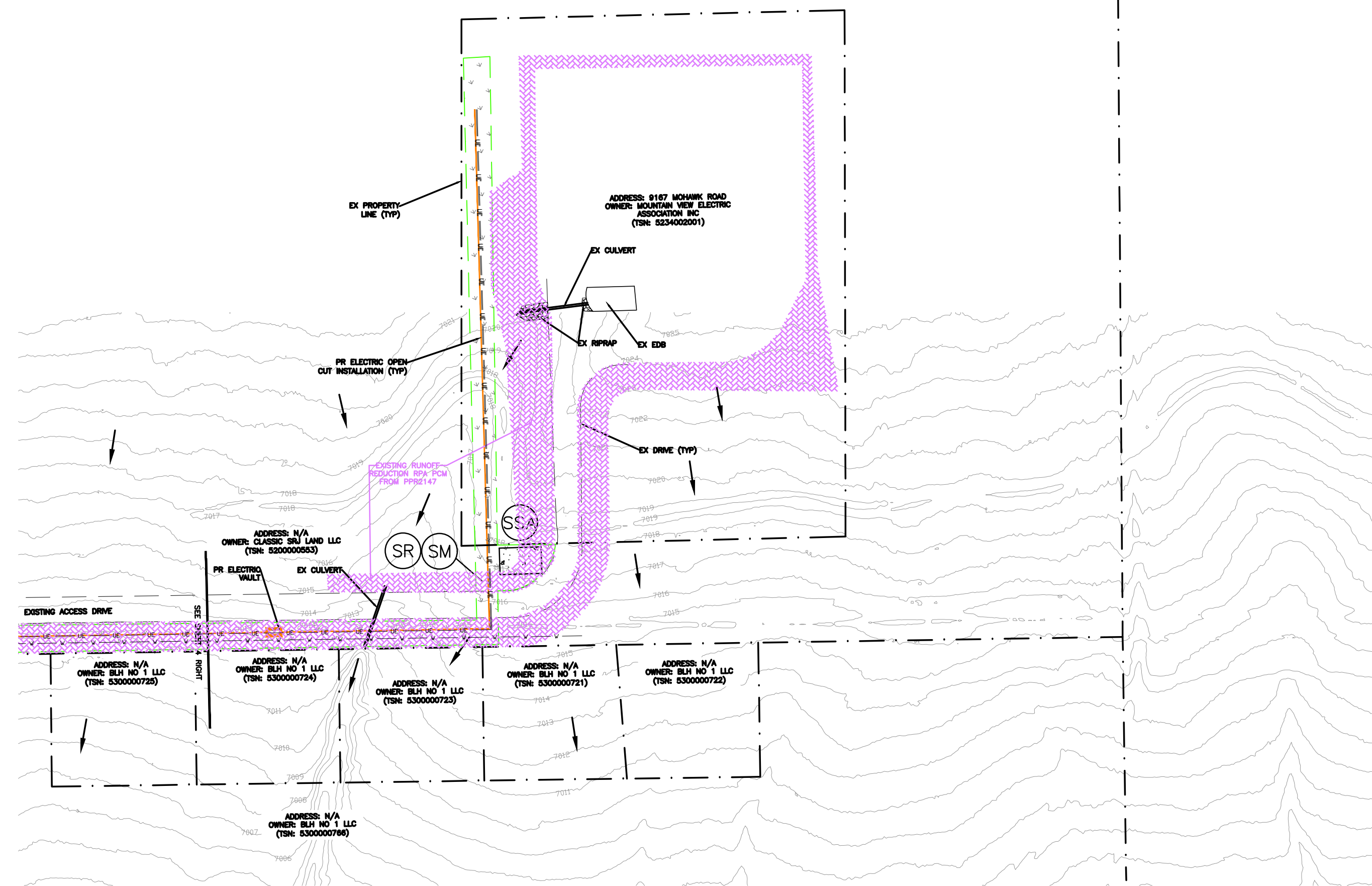
PREPARED FOR:
MVEA
ATTN: DAVE WALDNER
11140 E. WOODMEN RD
PEYTON, CO 80831
(719) 495-2283



721 S. 23RD STREET
COLORADO SPRINGS, CO 80904
OFFICE: 719-635-6422
FAX: 719-635-6426
www.tneng.com

VOLLER SUBSTATION WEST CIRCUIT
GRADING, EROSION, & SEDIMENT CONTROL PLAN
EROSION CONTROL PLAN

DESIGNED BY	JF
DRAWN BY	JF
CHECKED BY	
H-SCALE	AS SHOWN
V-SCALE	NA
JOB NO.	2583.00
DATE ISSUED	03/18/26
SHEET NO.	4 OF 6



EROSION CONTROL LEGEND

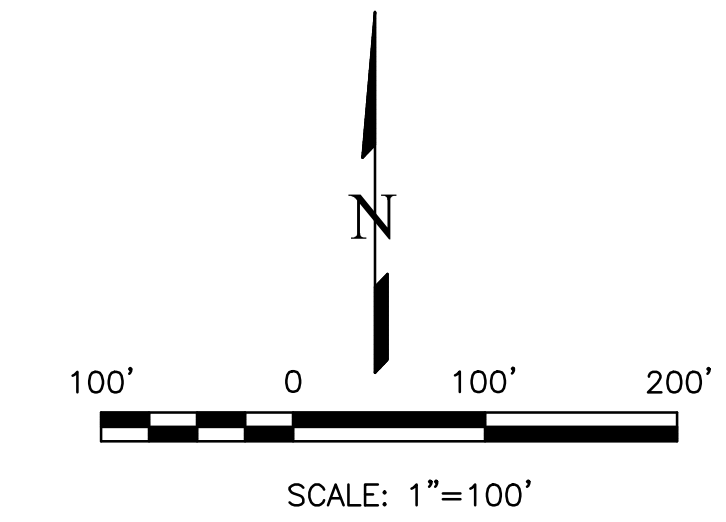
KEY	TITLE	SYMBOL
FINAL	PERMANENT SEEDING AND MULCHING (FINAL)	[Green dashed line]
INTERIM	STABILIZED STAGING AREA (INTERIM)	[Green dotted line]
FINAL	SURFACE ROUGHENING (INTERIM/FINAL)	[Green hatched area]

LEGEND

- ~ ~ ~ ~ ~ EXISTING ROADSIDE DITCH
- — — — — LIMITS OF DISTURBANCE/CONSTRUCTION
- — — — — EXISTING 2' CONTOUR
- EXISTING FLOW DIRECTION
- — — — — PROPOSED U/G ELECTRIC BY OPEN CUT EXCAVATION
- — — — — PROPOSED U/G ELEC BY DIRECTIONAL BORE (APPROXIMATE LOCATIONS)
- — — — — EXISTING UNDERGROUND FIBER OPTIC LINE
- — — — — EXISTING UNDERGROUND DATA LINE
- — — — — EXISTING OVERHEAD ELECTRIC LINE
- — — — — EXISTING UNDERGROUND ELECTRIC LINE
- — — — — EXISTING GAS LINE
- — — — — EXISTING WATER LINE
- - - - - EXISTING PROPERTY LINE/ROW

GENERAL NOTES

1. CONTRACTOR TO MARK UP PLAN SHOWING ACTUAL FIELD INSTALLATION OF EROSION CONTROL BMPs.
2. BROADCAST SEEDING SHALL BE PLACED OVER DISTURBED AREAS ONCE THE CONSTRUCTION IS DONE. ALL AREAS TO BE VEGETATED WITH SEEDING SHOULD ALSO BE TEMPORARILY STABILIZED VIA SURFACE ROUGHENING OR SOME OTHER MEANS.
3. TOTAL LIMITS OF DISTURBANCE ESTIMATED TO BE APPROXIMATELY 3.40 AC.
4. WHEN WORK HAS BEEN COMPLETED, CONTRACTOR SHALL RETURN ANY DISTURBED AREAS TO THEIR ORIGINAL GRADES.
5. MAX ALLOWABLE EXCAVATED/STOCKPILED SLOPE IS 2:1.
6. BRULE ROAD, WOODMEN FRONTAGE ROAD AND OTO CIRCLE WILL BE USED FOR ACCESS TO THE PROJECT. THESE ROADS WILL BE CLEARED/SWEPT AS NECESSARY TO REMOVE ANY SIGNIFICANT SEDIMENT ACCUMULATION AND PREVENT MIGRATION OF UNEVEN DIRT CLODS/MUD.
7. PROPERTY LINES SHOWN ON THE PLANS ARE APPROXIMATE.
8. WORK ALONG THIS LINE WILL BE DONE WITHIN A 20' MVEA EASEMENT, OUTSIDE OF THE PUBLIC ROW.
9. VEGETATIVE COVER IS APPROXIMATELY 50% CONSISTING OF NATIVE GRASSES.
10. AS DETERMINED BY THE FLOOD INSURANCE RATE MAP, COMMUNITY PANEL # 08041C0533G, EFFECTIVE DATES DECEMBER 7, 2018, NO PORTION OF THIS SITE IS LOCATED WITHIN A DESIGNATED 100-YEAR F.E.M.A. FLOODPLAIN.
11. THE CONTRACTOR MUST RETURN THE ENTIRE SITE TO PRE CONSTRUCTION CONDITIONS OR BETTER CONDITIONS.
12. SURFACE ROUGHEN ALL SEED AND MULCH AREAS.



THIS DESIGN WAS PREPARED UNDER MY DIRECT SUPERVISION FOR AND ON BEHALF OF TERRA NOVA ENGINEERING, INC.

DESIGNED BY JF
 DRAWN BY JF
 CHECKED BY
 H-SCALE AS SHOWN
 V-SCALE NA
 JOB NO. 2583.00
 DATE ISSUED 03/18/26
 SHEET NO. 5 OF 6

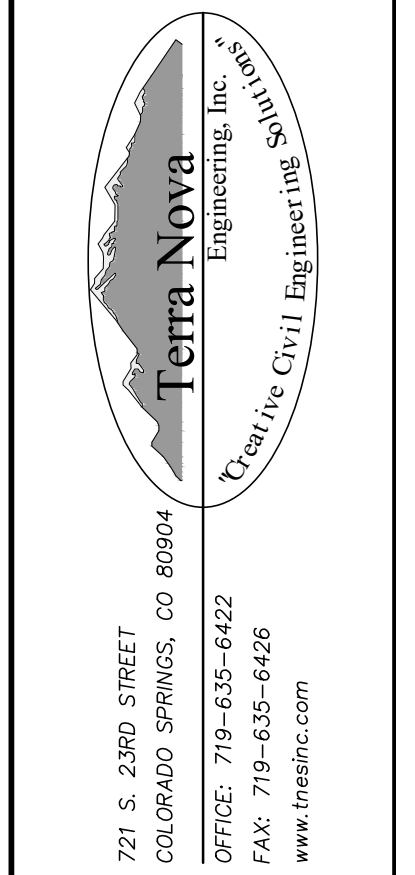
JOHN FORNANDER, P.E.
 COLORADO P.E. NO. 66415



REVISIONS NO.	DESCRIPTION	DATE

UNTIL SUCH TIME AS THESE DRAWINGS ARE APPROVED BY THE APPROPRIATE REVIEWING AGENCIES, THIS DRAWING IS NOT TO BE USED FOR ANY PURPOSES DESIGNATED BY WRITTEN AUTHORIZATION.

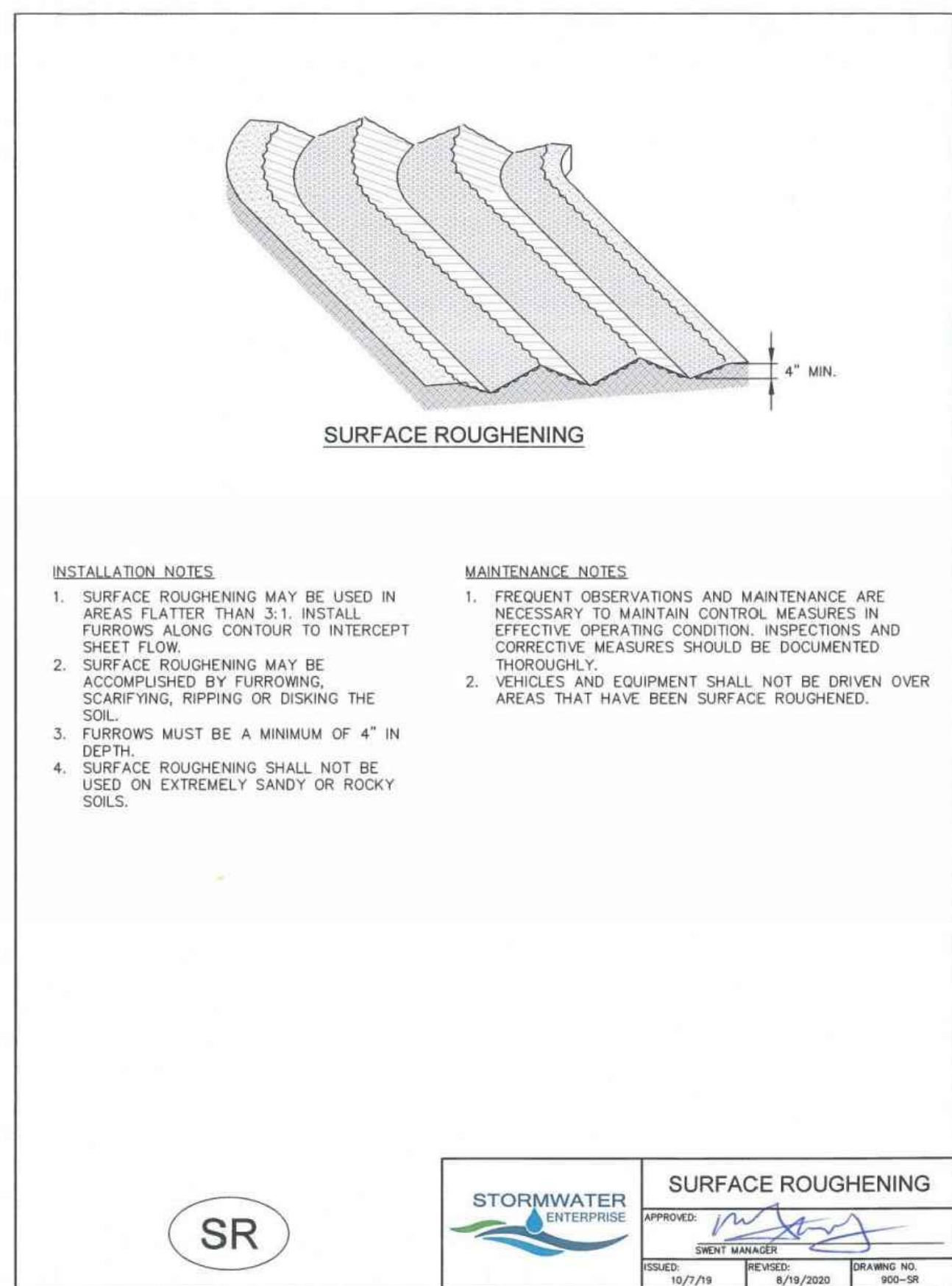
PREPARED FOR:
MVEA
 ATTN: DAVE WALDMER
 11140 E. WOODMEN RD
 PEYTON, CO 80831
 (719) 495-2283



VOLLMER SUBSTATION WEST CIRCUIT

GRADING, EROSION, & SEDIMENT CONTROL PLAN
 EROSION CONTROL PLAN

DESIGNED BY JF
DRAWN BY JF
CHECKED BY
H-SCALE AS SHOWN
V-SCALE NA
JOB NO. 2583.00
DATE ISSUED 03/18/26
SHEET NO. 5 OF 6



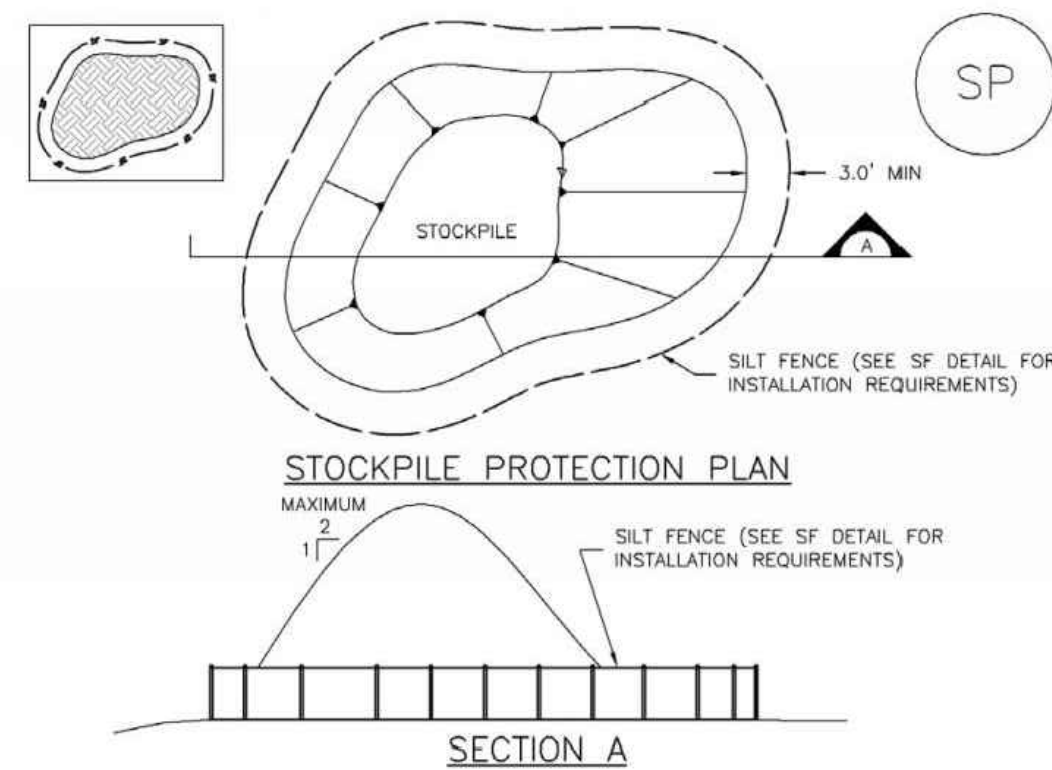
- INSTALLATION NOTES**
1. SURFACE ROUGHENING MAY BE USED IN AREAS FLATTER THAN 3:1. INSTALL FURROWS ALONG CONTOUR TO INTERCEPT SHEET FLOW.
 2. SURFACE ROUGHENING MAY BE ACCOMPLISHED BY FURROWING, SCARIFYING, RIPPING OR DESKING THE SOIL.
 3. FURROWS MUST BE A MINIMUM OF 4" IN DEPTH.
 4. SURFACE ROUGHENING SHALL NOT BE USED ON EXTREMELY SANDY OR ROCKY SOILS.
- MAINTENANCE NOTES**
1. FREQUENT OBSERVATIONS AND MAINTENANCE ARE NECESSARY TO MAINTAIN CONTROL MEASURES IN EFFECTIVE OPERATING CONDITION. INSPECTIONS AND CORRECTIVE MEASURES SHOULD BE DOCUMENTED THOROUGHLY.
 2. VEHICLES AND EQUIPMENT SHALL NOT BE DRIVEN OVER AREAS THAT HAVE BEEN SURFACE ROUGHENED.

SURFACE ROUGHENING

APPROVED: [Signature]

ISSUED: 10/7/19 REVISED: 8/19/2020 DRAWING NO: 900-SR

Stockpile Management (SP) MM-2



- STOCKPILE PROTECTION INSTALLATION NOTES**
1. SEE PLAN VIEW FOR:
 - LOCATION OF STOCKPILES.
 - TYPE OF STOCKPILE PROTECTION.
 2. INSTALL PERIMETER CONTROLS IN ACCORDANCE WITH THEIR RESPECTIVE DESIGN DETAILS. SILT FENCE IS SHOWN IN THE STOCKPILE PROTECTION DETAILS; HOWEVER, OTHER TYPES OF PERIMETER CONTROLS INCLUDING SEDIMENT CONTROL LOGS OR ROCK SOCKS MAY BE SUITABLE IN SOME CIRCUMSTANCES. CONSIDERATIONS FOR DETERMINING THE APPROPRIATE TYPE OF PERIMETER CONTROL FOR A STOCKPILE INCLUDE WHETHER THE STOCKPILE IS LOCATED ON A PERVIOUS OR IMPERVIOUS SURFACE, THE RELATIVE HEIGHTS OF THE PERIMETER CONTROL AND STOCKPILE, THE ABILITY OF THE PERIMETER CONTROL TO CONTAIN THE STOCKPILE WITHOUT FAILING IN THE EVENT THAT MATERIAL FROM THE STOCKPILE SHIFTS OR SLUMPS AGAINST THE PERIMETER, AND OTHER FACTORS.
 3. STABILIZE THE STOCKPILE SURFACE WITH SURFACE ROUGHENING, TEMPORARY SEEDING AND MULCHING, EROSION CONTROL BLANKETS, OR SOIL BINDERS. SOILS STOCKPILED FOR AN EXTENDED PERIOD (TYPICALLY FOR MORE THAN 60 DAYS) SHOULD BE SEEDED AND MULCHED WITH A TEMPORARY GRASS COVER ONCE THE STOCKPILE IS PLACED (TYPICALLY WITHIN 14 DAYS). USE OF MULCH ONLY OR A SOIL BINDER IS ACCEPTABLE IF THE STOCKPILE WILL BE IN PLACE FOR A MORE LIMITED TIME PERIOD (TYPICALLY 30-60 DAYS).
 4. FOR TEMPORARY STOCKPILES ON THE INTERIOR PORTION OF A CONSTRUCTION SITE, WHERE OTHER DOWNGRADIENT CONTROLS, INCLUDING PERIMETER CONTROL, ARE IN PLACE, STOCKPILE PERIMETER CONTROLS MAY NOT BE REQUIRED.

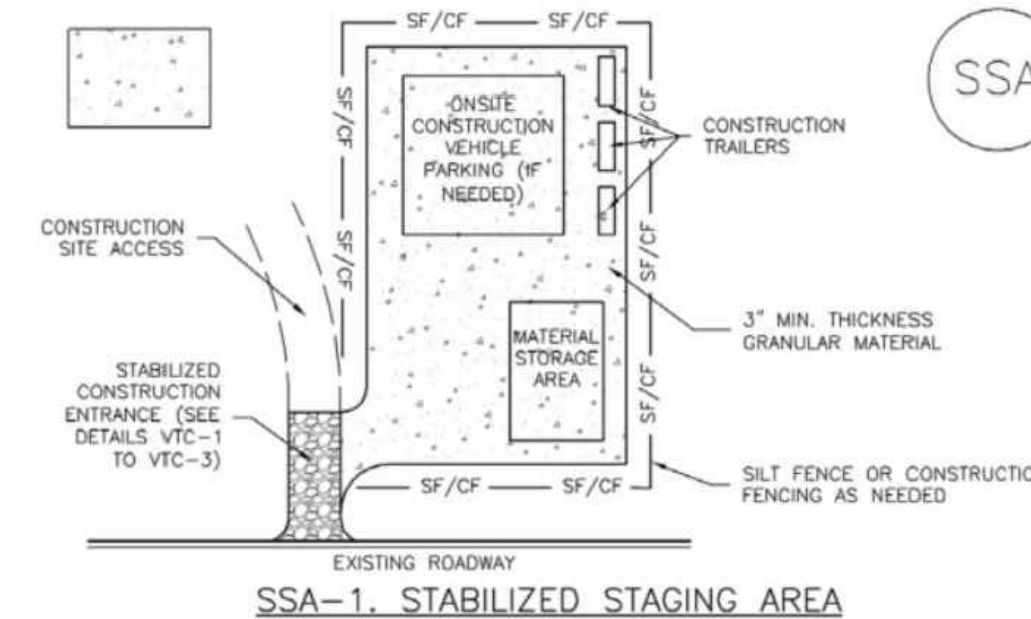
November 2010 Urban Drainage and Flood Control District Urban Storm Drainage Criteria Manual Volume 3 SP-3

MM-2 Stockpile Management (SM)

- STOCKPILE PROTECTION MAINTENANCE NOTES**
1. INSPECT BMPs EACH WORKDAY, AND MAINTAIN THEM IN EFFECTIVE OPERATING CONDITION. MAINTENANCE OF BMPs SHOULD BE PROACTIVE, NOT REACTIVE. INSPECT BMPs AS SOON AS POSSIBLE (AND ALWAYS WITHIN 24 HOURS) FOLLOWING A STORM THAT CAUSES SURFACE EROSION, AND PERFORM NECESSARY MAINTENANCE.
 2. FREQUENT OBSERVATIONS AND MAINTENANCE ARE NECESSARY TO MAINTAIN BMPs IN EFFECTIVE OPERATING CONDITION. INSPECTIONS AND CORRECTIVE MEASURES SHOULD BE DOCUMENTED THOROUGHLY.
 3. WHERE BMPs HAVE FAILED, REPAIR OR REPLACEMENT SHOULD BE INITIATED UPON DISCOVERY OF THE FAILURE.
 4. IF PERIMETER PROTECTION MUST BE MOVED TO ACCESS SOIL STOCKPILE, REPLACE PERIMETER CONTROLS BY THE END OF THE WORKDAY.
 5. STOCKPILE PERIMETER CONTROLS CAN BE REMOVED ONCE ALL THE MATERIAL FROM THE STOCKPILE HAS BEEN USED.
- STOCKPILE PROTECTION MAINTENANCE NOTES**
1. INSPECT BMPs EACH WORKDAY, AND MAINTAIN THEM IN EFFECTIVE OPERATING CONDITION. MAINTENANCE OF BMPs SHOULD BE PROACTIVE, NOT REACTIVE. INSPECT BMPs AS SOON AS POSSIBLE (AND ALWAYS WITHIN 24 HOURS) FOLLOWING A STORM THAT CAUSES SURFACE EROSION, AND PERFORM NECESSARY MAINTENANCE.
 2. FREQUENT OBSERVATIONS AND MAINTENANCE ARE NECESSARY TO MAINTAIN BMPs IN EFFECTIVE OPERATING CONDITION. INSPECTIONS AND CORRECTIVE MEASURES SHOULD BE DOCUMENTED THOROUGHLY.
 3. WHERE BMPs HAVE FAILED, REPAIR OR REPLACEMENT SHOULD BE INITIATED UPON DISCOVERY OF THE FAILURE.
 4. IF PERIMETER PROTECTION MUST BE MOVED TO ACCESS SOIL STOCKPILE, REPLACE PERIMETER CONTROLS BY THE END OF THE WORKDAY.
 5. STOCKPILE PERIMETER CONTROLS CAN BE REMOVED ONCE ALL THE MATERIAL FROM THE STOCKPILE HAS BEEN USED.
- (DETAILS ADAPTED FROM PARKER, COLORADO, NOT AVAILABLE IN AUTOCAD)
- NOTE: MANY JURISDICTIONS HAVE BMP DETAILS THAT VARY FROM UDFCD STANDARD DETAILS. CONSULT WITH LOCAL JURISDICTIONS AS TO WHICH DETAIL SHOULD BE USED WHEN DIFFERENCES ARE NOTED.

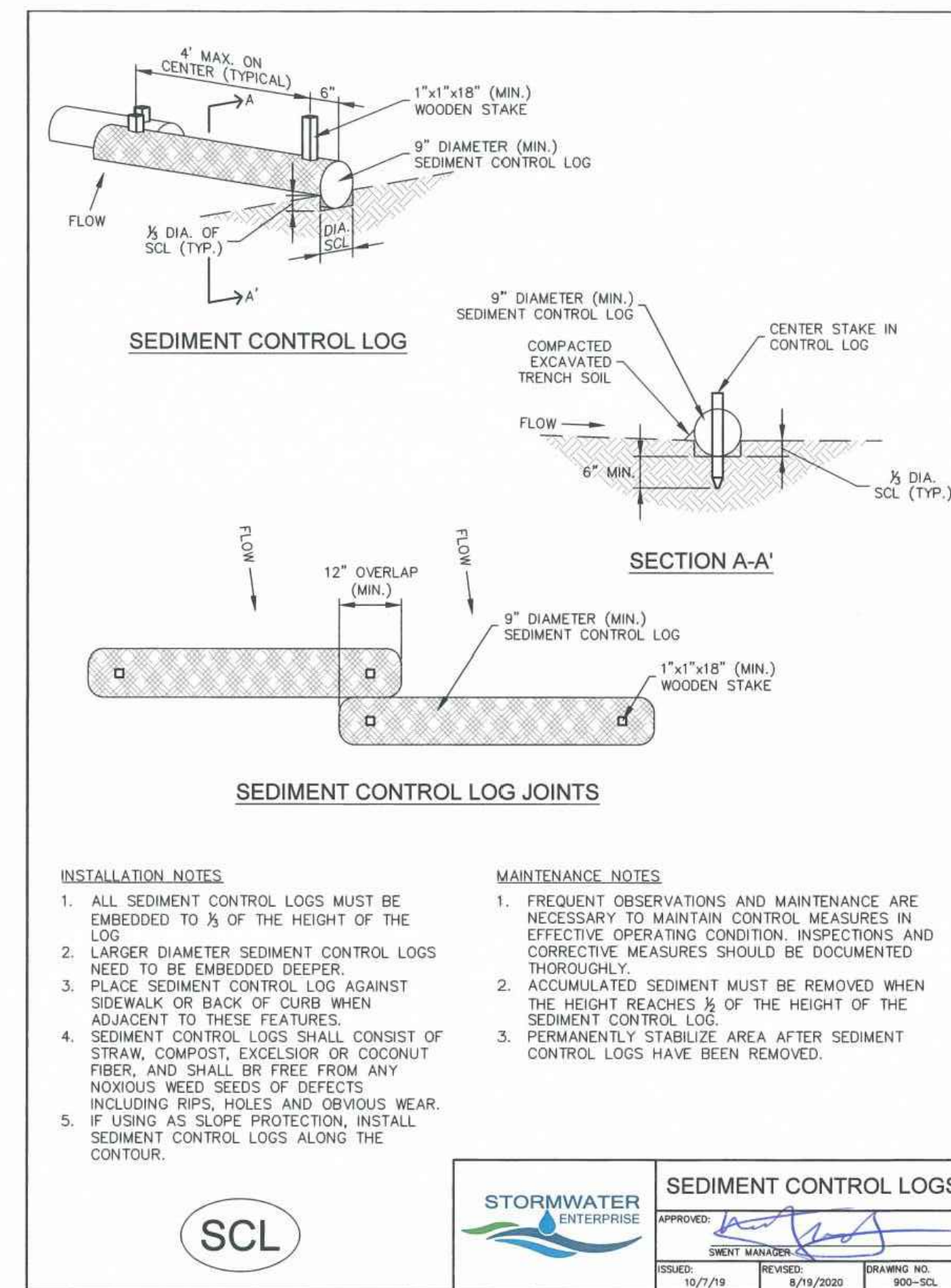
SP-4 Urban Drainage and Flood Control District Urban Storm Drainage Criteria Manual Volume 3 November 2010

Stabilized Staging Area (SSA) SM-6



- STABILIZED STAGING AREA INSTALLATION NOTES**
1. SEE PLAN VIEW FOR:
 - LOCATION OF STAGING AREA(S).
 - CONTRACTOR MAY ADJUST LOCATION AND SIZE OF STAGING AREA WITH APPROVAL FROM THE LOCAL JURISDICTION.
 2. STABILIZED STAGING AREA SHOULD BE APPROPRIATE FOR THE NEEDS OF THE SITE. OVERSIZING RESULTS IN A LARGER AREA TO STABILIZE FOLLOWING CONSTRUCTION.
 3. STAGING AREA SHALL BE STABILIZED PRIOR TO OTHER OPERATIONS ON THE SITE.
 4. THE STABILIZED STAGING AREA SHALL CONSIST OF A MINIMUM 3" THICK GRANULAR MATERIAL.
 5. UNLESS OTHERWISE SPECIFIED BY LOCAL JURISDICTION, ROCK SHALL CONSIST OF DOT SECT. #703, #810, #13 COARSE AGGREGATE OR #1 (MINUS) ROCK.
 6. ADDITIONAL PERIMETER BMPs MAY BE REQUIRED INCLUDING BUT NOT LIMITED TO SILT FENCE AND CONSTRUCTION FENCING.
- STABILIZED STAGING AREA MAINTENANCE NOTES**
1. INSPECT BMPs EACH WORKDAY, AND MAINTAIN THEM IN EFFECTIVE OPERATING CONDITION. MAINTENANCE OF BMPs SHOULD BE PROACTIVE, NOT REACTIVE. INSPECT BMPs AS SOON AS POSSIBLE (AND ALWAYS WITHIN 24 HOURS) FOLLOWING A STORM THAT CAUSES SURFACE EROSION, AND PERFORM NECESSARY MAINTENANCE.
 2. FREQUENT OBSERVATIONS AND MAINTENANCE ARE NECESSARY TO MAINTAIN BMPs IN EFFECTIVE OPERATING CONDITION. INSPECTIONS AND CORRECTIVE MEASURES SHOULD BE DOCUMENTED THOROUGHLY.
 3. WHERE BMPs HAVE FAILED, REPAIR OR REPLACEMENT SHOULD BE INITIATED UPON DISCOVERY OF THE FAILURE.
 4. ROCK SHALL BE REAPPLIED OR REGRADED AS NECESSARY IF RUTTING OCCURS OR UNDERLYING SUBGRADE BECOMES EXPOSED.

November 2010 Urban Drainage and Flood Control District Urban Storm Drainage Criteria Manual Volume 3 SSA-3



- INSTALLATION NOTES**
1. ALL SEDIMENT CONTROL LOGS MUST BE EMBEDDED TO 1/2 OF THE HEIGHT OF THE LOG.
 2. LARGER DIAMETER SEDIMENT CONTROL LOGS NEED TO BE EMBEDDED DEEPER.
 3. PLACE SEDIMENT CONTROL LOG AGAINST SIDEWALK OR BACK OF CURB WHEN ADJACENT TO THESE FEATURES.
 4. SEDIMENT CONTROL LOGS SHALL CONSIST OF STRAW, COMPOST, EXCELSIOR OR COCONUT FIBER, AND SHALL BE FREE FROM ANY NOXIOUS WEED SEEDS OR DEFECTS INCLUDING RIPS, HOLES AND OBVIOUS WEAR.
 5. IF USING AS SLOPE PROTECTION, INSTALL SEDIMENT CONTROL LOGS ALONG THE CONTOUR.
- MAINTENANCE NOTES**
1. FREQUENT OBSERVATIONS AND MAINTENANCE ARE NECESSARY TO MAINTAIN CONTROL MEASURES IN EFFECTIVE OPERATING CONDITION. INSPECTIONS AND CORRECTIVE MEASURES SHOULD BE DOCUMENTED THOROUGHLY.
 2. ACCUMULATED SEDIMENT MUST BE REMOVED WHEN THE HEIGHT REACHES 1/2 OF THE HEIGHT OF THE SEDIMENT CONTROL LOG.
 3. PERMANENTLY STABILIZE AREA AFTER SEDIMENT CONTROL LOGS HAVE BEEN REMOVED.

SEDIMENT CONTROL LOGS

APPROVED: [Signature]

ISSUED: 10/7/19 REVISED: 8/19/2020 DRAWING NO: 900-SCL

Chapter 14 Revegetation

or irrigation to wet and settle the seed bed. Firming of the seedbed following seeding will improve results during dry or warm seeding times.

Table 14-9. Recommended Seed Mix for High Water Table Conditions¹

Common Name (Variety)	Scientific Name	Growth Season	Growth Form	Seeds/Lb	Lbs PLS/Acre Drilled	Lbs PLS/Acre Broadcast or Hydroseeded
Redtop ²	<i>Agrostis alba</i>	Warm	Sod	5,000,000	0.1	0.2
Switchgrass (Pathfinder)	<i>Panicum virgatum</i>	Warm	Sod/Bunch	389,000	2.2	4.4
Western wheatgrass (Aririba)	<i>Pascopyrum smithii</i>	Cool	Sod	110,000	7.9	15.8
Indian saltgrass	<i>Distichlis spicata</i>	Warm	Sod	520,000	1.0	2.0
Woolly sedge	<i>Carex lasiocarpa</i>	Cool	Sod	400,000	0.1	0.2
Baltic rush	<i>Juncus balticus</i>	Cool	Sod	109,300,000	0.1	0.2
Prairie cordgrass	<i>Spartina pectinata</i>	Cool	Sod	110,000	1.0	2.0
Annual rye	<i>Lolium multiflorum</i>	Cool	Cover crop	227,000	10.0	20.0
				TOTAL	22.4	44.8
Wildflowers						
Nuttall's sunflower	<i>Helianthus nuttallii</i>	---	---	250,000	0.10	0.20
Wild bergamot	<i>Monarda fistulosa</i>	---	---	1,450,000	0.12	0.24
Yarrow	<i>Achillea millefolium</i>	---	---	2,770,000	0.06	0.12
Blue vervain	<i>Verbena hastata</i>	---	---		0.12	0.24
				TOTAL	0.40	0.80

¹For portions of facilities located near or on the bottom or where wet soil conditions occur. Planting of potted nursery stock wetland plants 3-foot on-center is recommended for sites with wetland hydrology.

²Non-native

May 2014 City of Colorado Springs Drainage Criteria Manual, Volume 1 14-21

Revegetation Chapter 14

Table 14-10. Recommended Seed Mix for Transition Areas¹

Common Name (Variety)	Scientific Name	Growth Season	Growth Form	Seeds/Lb	Lbs PLS/Acre Drilled	Lbs PLS/Acre Broadcast or Hydroseeded
Sheep fescue (Duran)	<i>Festuca ovina</i>	Cool	Bunch	680,000	1.3	2.6
Western wheatgrass (Aririba)	<i>Pascopyrum smithii</i>	Cool	Sod	110,000	7.9	15.8
Alkali sacaton	<i>Spolobolus airoides</i>	Warm	Bunch	1,758,000	0.5	1.0
Slender wheatgrass	<i>Elymus trachycalyx</i>	Cool	Bunch	159,000	5.5	11.0
Canadian bluegrass (Ruebens) ¹	<i>Poa compressa</i>	Cool	Sod	2,500,000	0.3	0.6
Switchgrass (Pathfinder)	<i>Panicum virgatum</i>	Warm	Sod/Bunch	389,000	1.3	2.6
Annual rye	<i>Lolium multiflorum</i>	Cool	Cover crop	227,000	10.0	20.0
				TOTAL	26.8	53.6
Wildflowers						
Blanket flower	<i>Faillardia aristata</i>	---	---	132,000	0.25	0.50
Prairie coneflower	<i>Ratibida columnaris</i>	---	---	1,230,000	0.20	0.40
Purple prairie clover	<i>Petalostemum purpurea</i>	---	---	210,000	0.20	0.40
Gayfeather	<i>Liatris punctata</i>	---	---	138,000	0.06	0.12
Flax	<i>Linum lewisii</i>	---	---	293,000	0.20	0.40
Penstemon	<i>Penstemon strictus</i>	---	---	592,000	0.20	0.40
Yarrow	<i>Achillea millefolium</i>	---	---	2,770,000	0.03	0.06
				TOTAL	1.14	2.28

¹For side slopes or between wet and dry areas.

²Substitute 1.7 lbs PLS/acre of inland saltgrass (*Distichlis spicata*) in salty soils.

14-22 City of Colorado Springs Drainage Criteria Manual, Volume 1 May 2014

SM-6 Stabilized Staging Area (SSA)

- STABILIZED STAGING AREA MAINTENANCE NOTES**
5. STABILIZED STAGING AREA SHALL BE ENLARGED IF NECESSARY TO CONTAIN PARKING, STORAGE, AND UNLOADING/LOADING OPERATIONS.
 6. THE STABILIZED STAGING AREA SHALL BE REMOVED AT THE END OF CONSTRUCTION. THE GRANULAR MATERIAL SHALL BE REMOVED OR, IF APPROVED BY THE LOCAL JURISDICTION, USED ON SITE, AND THE AREA COVERED WITH TOPSOIL, SEEDED AND MULCHED OR OTHERWISE STABILIZED IN A MANNER APPROVED BY LOCAL JURISDICTION.
- NOTE: MANY MUNICIPALITIES PROHIBIT THE USE OF RECYCLED CONCRETE AS GRANULAR MATERIAL FOR STABILIZED STAGING AREAS DUE TO DIFFICULTIES WITH RE-ESTABLISHMENT OF VEGETATION IN AREAS WHERE RECYCLED CONCRETE WAS PLACED.
- NOTE: MANY JURISDICTIONS HAVE BMP DETAILS THAT VARY FROM UDFCD STANDARD DETAILS. CONSULT WITH LOCAL JURISDICTIONS AS TO WHICH DETAIL SHOULD BE USED WHEN DIFFERENCES ARE NOTED.
- (DETAILS ADAPTED FROM DOUGLAS COUNTY, COLORADO, NOT AVAILABLE IN AUTOCAD)

SSA-4 Urban Drainage and Flood Control District Urban Storm Drainage Criteria Manual Volume 3 November 2010

REVISIONS

NO.	DESCRIPTION	DATE

UNTIL SUCH TIME AS THESE DRAWINGS ARE APPROVED BY THE APPLICABLE REVIEWING AGENCIES, THESE DRAWINGS ARE NOT TO BE USED FOR ANY PURPOSES DESIGNATED BY WRITTEN AUTHORIZATION.

PREPARED FOR:
MVEA
ATTN: DAVE WALDMEN
11140 E. WOODMEN RD
PEYTON, CO 80831
(719) 495-2283

Terra Nova
Engineering, Inc.
11111 S. W. 11th St.
P.O. Box 11111
Tampa, FL 33611
721 S. 28th Street
Colorado Springs, CO 80904
OFFICE: 719-635-6422
FAX: 719-635-6426
www.terranovaltd.com

VOLLMER SUBSTATION WEST CIRCUIT

GRADING, EROSION, & SEDIMENT CONTROL PLAN
EROSION CONTROL DETAILS

DESIGNED BY JF
DRAWN BY JF
CHECKED BY
H-SCALE AS SHOWN
V-SCALE NA
JOB NO. 2583.00
DATE ISSUED 03/18/26
SHEET NO. 6 OF 6