

VOLLMER SUBSTATION WEST CIRCUIT

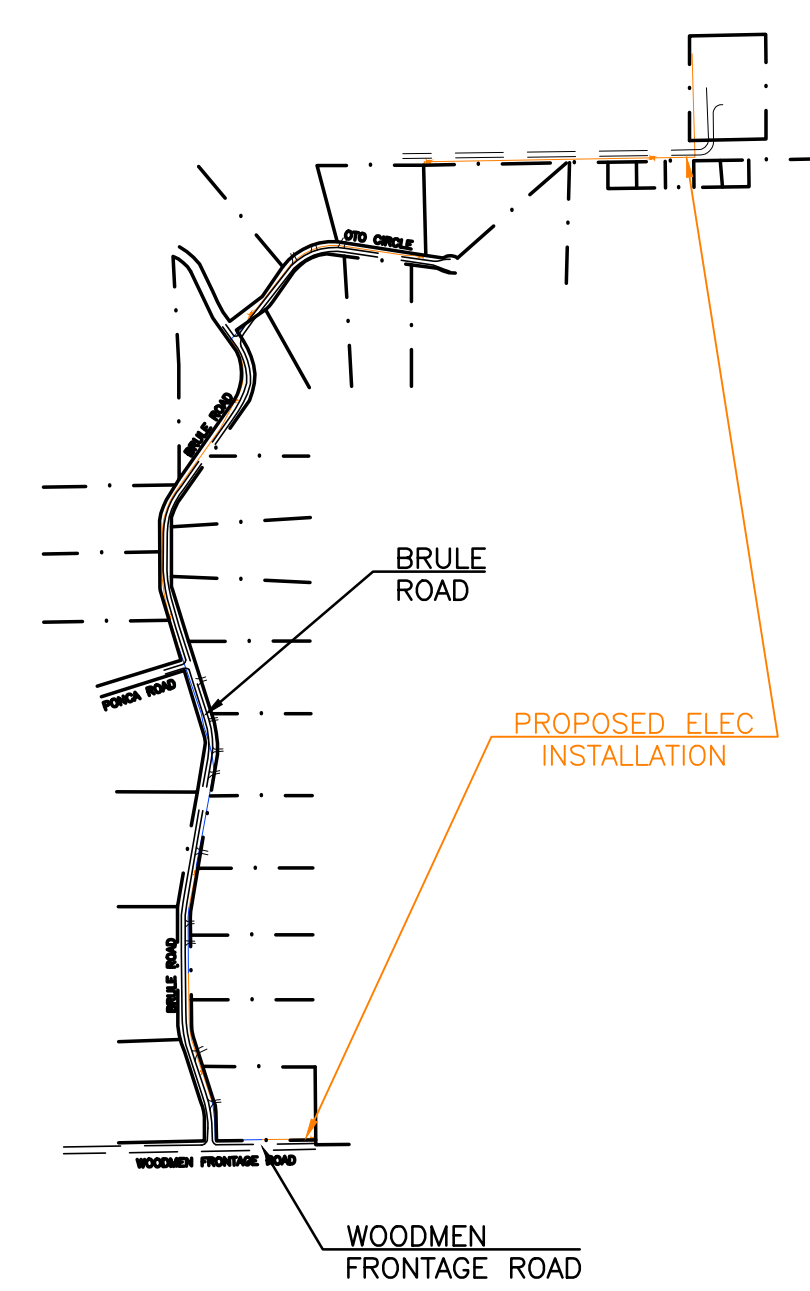
EL PASO COUNTY, CO

GRADING, EROSION, & SEDIMENT CONTROL PLAN

MARCH 2026

STANDARD NOTES FOR EL PASO COUNTY GRADING AND EROSION CONTROL PLANS

- NOTWITHSTANDING ANYTHING DEPICTED IN THESE PLANS IN WORDS OR GRAPHIC REPRESENTATION, ALL DESIGN AND CONSTRUCTION RELATED TO ROADS, STORM DRAINAGE, AND EROSION CONTROL SHALL CONFORM TO THE STANDARDS AND REQUIREMENTS OF THE MOST RECENT VERSION OF THE RELEVANT ADOPTED EL PASO COUNTY (EPC) STANDARDS, INCLUDING THE LAND DEVELOPMENT CODE (LDC), THE ENGINEERING CRITERIA MANUAL (ECM), THE DRAINAGE CRITERIA MANUAL (DCM) VOLUME 1 AND 2. ANY DEVIATIONS FROM REGULATIONS AND STANDARDS MUST BE REQUESTED, AND APPROVED, IN WRITING.
- A PRECONSTRUCTION MEETING BETWEEN THE PERMIT HOLDER(S) AND EL PASO COUNTY SHALL BE HELD PRIOR TO ANY CONSTRUCTION ACTIVITIES. IT IS THE RESPONSIBILITY OF THE PERMIT HOLDER(S) TO COORDINATE THE MEETING TIME AND PLACE WITH COUNTY STAFF. NO LAND DISTURBANCE OR CONSTRUCTION ACTIVITIES BEYOND THE INSTALLATION OF THE INITIAL CONSTRUCTION CONTROL MEASURES (CCMS), AS INDICATED ON THE APPROVED GEC PLAN OR CDS WITH GEC PLANS, MAY OCCUR PRIOR TO RECEIVING A NOTICE TO PROCEED (NTP) ISSUED BY THE ECM ADMINISTRATOR. FAILURE TO OBTAIN A NOTICE TO PROCEED PRIOR TO BEGINNING LAND DISTURBING ACTIVITIES MAY RESULT IN AN IMMEDIATE STOP WORK ORDER (SWO).
- CONSTRUCTION CONTROL MEASURES MUST BE INSTALLED PRIOR TO COMMENCEMENT OF ACTIVITIES THAT COULD CONTRIBUTE POLLUTANTS TO STORMWATER. STORMWATER RUNOFF FROM ALL DISTURBED AREAS AND SOIL STORAGE AREAS MUST UTILIZE OR FLOW TO ONE OR MORE CCM(S) TO MINIMIZE EROSION OR SEDIMENT IN THE DISCHARGE. THE CCM(S) MUST CONTAIN OR FILTER FLOWS IN ORDER TO PREVENT THE BYPASS OF FLOWS WITHOUT TREATMENT AND MUST BE APPROPRIATE FOR STORMWATER RUNOFF FROM DISTURBED AREAS AND FOR THE EXPECTED FLOW RATE, DURATION, AND FLOW CONDITIONS (E.G., SHEET OR CONCENTRATED FLOW).
- ALL CCM(S) SHALL BE MAINTAINED AND REMAIN IN EFFECTIVE OPERATING CONDITION UNTIL FINAL STABILIZATION IS ACHIEVED. THE QUALIFIED STORMWATER MANAGER (OSM) SHALL ASSESS THE ADEQUACY OF CCM(S) AT THE SITE AND IDENTIFY IF CHANGES TO THOSE CCM(S) ARE NEEDED TO ENSURE THE CONTINUED EFFECTIVE PERFORMANCE OF THE CCM(S).
- PRIOR TO CONSTRUCTION THE PERMIT HOLDER(S) SHALL VERIFY THE LOCATION OF EXISTING UTILITIES.
- MANAGEMENT OF THE STORMWATER MANAGEMENT PLAN (SWMP) DURING CONSTRUCTION IS THE RESPONSIBILITY OF THE DESIGNATED QSM. THE SWMP SHALL BE LOCATED ON-SITE OR DIGITALLY ACCESSIBLE AT ALL TIMES DURING CONSTRUCTION ACTIVITIES AND MUST BE IMPLEMENTED AS WRITTEN FROM THE START OF CONSTRUCTION ACTIVITY UNTIL FINAL STABILIZATION IS ACHIEVED. THE QSM SHALL AMEND THE SWMP WHEN THERE IS A CHANGE IN DESIGN, CONSTRUCTION, OPERATION, OR MAINTENANCE OF THE SITE WHICH WOULD REQUIRE THE IMPLEMENTATION OF NEW OR REVISED CCM(S) OR IF THE SWMP PROVES TO BE INEFFECTIVE IN CONTROLLING POLLUTANTS IN STORMWATER RUNOFF ASSOCIATED WITH CONSTRUCTION ACTIVITY OR WHEN CCM(S) ARE NO LONGER NECESSARY AND ARE REMOVED. THE QSM SHALL MAINTAIN A RECORD OF AMENDMENTS MADE TO THE SWMP THAT INCLUDES THE DATE AND IDENTIFICATION OF THE CHANGES.
- EARTH DISTURBANCES SHALL BE CONDUCTED IN SUCH A MANNER SO AS TO EFFICIENTLY MINIMIZE ACCELERATED SOIL EROSION AND RESULTING SEDIMENTATION. ALL DISTURBANCES SHALL BE DESIGNED, CONSTRUCTED, AND COMPLETED SO THAT THE EXPOSED AREA OF ANY DISTURBED LAND SHALL BE LIMITED TO THE SHORTEST PRACTICAL PERIOD OF TIME. PRE-EXISTING VEGETATION SHALL BE PROTECTED AND MAINTAINED WITHIN 50 HORIZONTAL FEET OF A RECEIVING WATER UNLESS SHOWN TO BE INFEASIBLE AND SPECIFICALLY REQUESTED AND APPROVED. IN ADDITION TO MAINTAINING 50 HORIZONTAL FEET OF PRE-EXISTING VEGETATION UPGRADIENT OF A RECEIVING WATER (UNLESS INFEASIBLE AND APPROVED), THE PERMIT HOLDER(S) MUST INSTALL CCM(S) UPGRADIENT OF THE VEGETATIVE BUFFER.
- TEMPORARY STABILIZATION MEASURES SHALL BE IMPLEMENTED ON DISTURBED AREAS AND STOCKPILES WHERE GROUND DISTURBING CONSTRUCTION ACTIVITY HAS PERMANENTLY CEASED OR TEMPORARILY CEASED FOR LONGER THAN 14 DAYS.
- EROSION CONTROL BLANKET (ECB) OR OTHER APPROVED CONTROL MEASURE(S) SHALL BE USED ON SLOPES STEEPER THAN 3:1.
- VEHICLE TRACKING CONTROLS (VTC) MUST BE IMPLEMENTED TO MINIMIZE VEHICLE TRACKING OF SEDIMENT FROM DISTURBED AREAS. VTC'S MUST INCLUDE A STRUCTURE CONTROL MEASURE (E.G., TRACKING PAD) AND MAY INCLUDE A NON-STRUCTURAL CONTROL MEASURE (E.G., SWEEPING). MATERIAL TRACKED OFF-SITE SHALL BE CLEANED UP AND PROPERLY DISPOSED OF IMMEDIATELY.
- ANY TEMPORARY OR PERMANENT CONTROL MEASURE DESIGNED AND CONSTRUCTED FOR THE CONVEYANCE OF STORMWATER AROUND, THROUGH, OR FROM THE EARTH DISTURBANCE AREA SHALL BE A STABILIZED CONVEYANCE DESIGNED TO MINIMIZE EROSION AND THE DISCHARGE OF SEDIMENT OFF-SITE.
- NO PERSON SHALL CAUSE THE IMPEDIMENT OF STORMWATER FLOW IN THE CURB AND GUTTER, PERMANENT CONTROL MEASURES (PCMS), OR DITCHES EXCEPT WITH APPROVED SEDIMENT CONTROL MEASURES.
- ALL PCMS SHALL BE INSTALLED AS DESIGNED IN THE APPROVED PLANS. ANY PROPOSED CHANGES THAT AFFECT THE DESIGN OR FUNCTION OF PCMS MUST BE APPROVED BY THE ECM ADMINISTRATOR PRIOR TO IMPLEMENTATION.
- SOIL COMPACTION MUST BE MINIMIZED IN AREAS WHERE INFILTRATION PCMS WILL BE INSTALLED OR IN AREAS WHERE FINAL STABILIZATION WILL BE ACHIEVED BY VEGETATIVE COVER. AREAS DESIGNATED FOR INFILTRATION PCMS SHALL ALSO BE PROTECTED FROM SEDIMENTATION DURING CONSTRUCTION UNTIL FINAL STABILIZATION IS ACHIEVED. IF SOIL COMPACTION DOES OCCUR IN AREAS WHERE FINAL STABILIZATION WILL BE ACHIEVED BY VEGETATIVE COVER OR IN AREAS WHERE INFILTRATION PCMS WILL BE INSTALLED, DECOMPACTION OF THE SOIL MUST BE COMPLETED PRIOR TO PLANTING OR INSTALLATION OF THE PCM(S). AN INFILTRATION TEST MUST BE CONDUCTED FOR ALL INFILTRATION PCMS AND THE INFILTRATION TEST RESULTS SUBMITTED TO EL PASO COUNTY PRIOR TO PRELIMINARY ACCEPTANCE (PA).
- FINAL STABILIZATION MUST BE IMPLEMENTED AT ALL APPLICABLE CONSTRUCTION SITES. FINAL STABILIZATION IS ACHIEVED WHEN ALL GROUND DISTURBING ACTIVITIES AT THE SITE HAVE BEEN COMPLETED AND PERMANENT STABILIZATION METHODS ARE COMPLETE. WHEN USING VEGETATIVE COVER AS A PERMANENT STABILIZATION METHOD, THE VEGETATION SHALL BE EVENLY DISTRIBUTED PERENNIAL VEGETATION AND OF THE VARIETY AND SPECIES FOUND IN THE COUNTY-APPROVED SEED MIXES OR IN THE APPROVED GEC PLAN. VEGETATION COVERAGE SHALL BE, AT A MINIMUM, EQUAL TO 70% OF WHAT WOULD HAVE BEEN PROVIDED BY NATIVE VEGETATION IN A LOCAL, UNDISTURBED AREA OR ADEQUATE REFERENCE SITE. ALL TEMPORARY CCM(S) SHALL BE REMOVED UPON FINAL STABILIZATION AND PRIOR TO STORMWATER PERMIT TERMINATION.
- STORMWATER DISCHARGES FROM CONSTRUCTION SITES SHALL NOT CAUSE OR THREATEN TO CAUSE POLLUTION, CONTAMINATION, OR DEGRADATION OF SURFACE WATER AND EARTH DISTURBANCE SHALL BE DONE IN A MANNER THAT MINIMIZES POLLUTION OF ANY ON-SITE OR OFF-SITE WATERS, INCLUDING WETLANDS.
- CONCRETE WASH WATER SHALL BE CONTAINED AND DISPOSED OF IN ACCORDANCE WITH THE SWMP. NO WASH WATER SHALL BE DISCHARGED TO OR ALLOWED TO BE DISCHARGED OFFSITE OR TO ENTER STATE WATERS, INCLUDING ANY SURFACE OR SUBSURFACE STORM DRAINAGE SYSTEM OR CONTROL MEASURES. CONCRETE WASHOUT AREAS SHALL NOT BE LOCATED IN AN AREA WHERE SHALLOW GROUNDWATER MAY BE PRESENT, OR WITHIN 50 FEET OF A SURFACE WATER BODY, CREEK, OR STREAM.
- DURING CONSTRUCTION DEWATERING OPERATIONS, UNCONTAMINATED GROUNDWATER MAY BE DISCHARGED ON-SITE IN ACCORDANCE WITH THE COLORADO DEPARTMENT OF PUBLIC HEALTH AND ENVIRONMENTS (CDPHE) LOW RISK DISCHARGE GUIDANCE POLICY FOR DISCHARGES OF UNCONTAMINATED GROUNDWATER TO LAND. IF CONSTRUCTION DEWATERING OPERATIONS ARE UNABLE TO MEET ALL CRITERIA, CONDITIONS, AND CONTROL MEASURE REQUIREMENTS OF THE LOW RISK DISCHARGE GUIDANCE POLICY, A COLORADO DISCHARGE PERMIT SYSTEM (CDPS) GENERAL PERMIT COG080000 WILL BE REQUIRED.
- CONTRACTOR SHALL BE RESPONSIBLE FOR THE REMOVAL OF ALL WASTE FROM THE CONSTRUCTION SITE FOR DISPOSAL IN ACCORDANCE WITH LOCAL AND STATE REGULATORY REQUIREMENTS. NO CONSTRUCTION DEBRIS, TREE SLASH, BUILDING MATERIAL WASTES, OR UNUSED BUILDING MATERIALS SHALL BE BURIED, DUMPED, OR DISCHARGED AT THE SITE.
- THE PERMIT HOLDER(S) SHALL BE RESPONSIBLE FOR THE REMOVAL OF ALL CONSTRUCTION DEBRIS, DIRT, TRASH, ROCK, SEDIMENT, SOIL, AND SAND THAT MAY ACCUMULATE IN ROADS, STORM DRAINS AND OTHER DRAINAGE CONVEYANCE SYSTEMS AND STORMWATER APPURTENANCES AS A RESULT OF SITE DEVELOPMENT.
- THE QUANTITY OF MATERIALS STORED ON THE PROJECT SITE SHALL BE LIMITED, AS MUCH AS PRACTICAL, TO THAT QUANTITY REQUIRED TO PERFORM THE WORK IN AN ORDERLY SEQUENCE. ALL MATERIALS STORED ON-SITE SHALL BE STORED IN A NEAT, ORDERLY MANNER, IN THEIR ORIGINAL CONTAINERS, WITH ORIGINAL MANUFACTURER'S LABELS.
- MATERIALS SHALL NOT BE TEMPORARILY PLACED OR STORED IN THE STREET, ALLEY, OR OTHER PUBLIC WAY UNLESS IN ACCORDANCE WITH AN APPROVED TRAFFIC CONTROL PLAN. APPROPRIATE CMS SHALL BE UTILIZED BASED ON SPECIFIC CONDITIONS AND CIRCUMSTANCES.
- BULK STORAGE (I.E., INDIVIDUAL CONTAINERS OF 55 GALLONS OR GREATER) OF ALLOWED PETROLEUM PRODUCTS OR OTHER ALLOWED LIQUID SHALL REQUIRE ADEQUATE SECONDARY CONTAINMENT OR EQUIVALENT PROTECTION TO CONTAIN ALL SPILLS ON-SITE AND TO PREVENT ANY SPILLED MATERIALS FROM ENTERING STATE WATERS, ANY SURFACE OR SUBSURFACE STORM DRAINAGE SYSTEM, OR OTHER FACILITIES.
- NO CHEMICAL(S) HAVING THE POTENTIAL TO BE RELEASED IN STORMWATER ARE TO BE STORED OR USED ON-SITE UNLESS PERMISSION FOR THE USE OF SUCH CHEMICAL(S) IS GRANTED IN WRITING BY THE ECM ADMINISTRATOR. IN GRANTING APPROVAL FOR THE USE OF SUCH CHEMICAL(S), SPECIAL CONDITIONS AND MONITORING MAY BE REQUIRED.
- ON AREAS OF EXPOSED SOIL, MINIMIZE DUST THROUGH THE APPROPRIATE APPLICATION OF WATER OR OTHER DUST SUPPRESSION TECHNIQUES. WATER APPLICATION MUST BE CONDUCTED IN A MANNER TO PREVENT DISCHARGE OFFSITE UNLESS AUTHORIZED BY A CDPS OR NATIONAL POLLUTANT DISCHARGE ELIMINATION SYSTEM (NPDES) PERMIT.
- ALL CONSTRUCTION TRAFFIC MUST ENTER/EXIT THE SITE ONLY AT APPROVED CONSTRUCTION ACCESS POINTS.
- FOR SITES WHERE A SOILS REPORT IS REQUIRED, THE APPROVED SOILS REPORT FOR THIS SITE SHALL BE CONSIDERED A PART OF THESE PLANS.
- PERMIT HOLDER(S) AND THEIR AGENTS SHALL COMPLY WITH THE "COLORADO WATER QUALITY CONTROL ACT"(TITLE 25, ARTICLE 8, CRS), AND THE "CLEAN WATER ACT"(33 USC 1344), IN ADDITION TO THE REQUIREMENTS OF THE LAND DEVELOPMENT CODE, DRAINAGE CRITERIA MANUAL, VOLUME 2, AND ENGINEERING CRITERIA MANUAL, ALL APPLICABLE LOCAL, STATE, AND FEDERAL PERMITS MUST BE OBTAINED PRIOR TO CONSTRUCTION. IN THE EVENT OF CONFLICTS BETWEEN THESE REQUIREMENTS AND OTHER LAWS, RULES, OR REGULATIONS OF OTHER FEDERAL, STATE, LOCAL, OR COUNTY AGENCIES, THE MOST RESTRICTIVE LAWS, RULES, OR REGULATIONS SHALL APPLY.
- AT LEAST TEN (10) DAYS PRIOR TO THE ANTICIPATED START OF CONSTRUCTION, FOR PROJECTS THAT WILL DISTURB ONE (1) ACRE OR MORE OR LESS THAN 1 ACRE AND PART OF A LARGER COMMON PLAN OF DEVELOPMENT OR SALE THAT WOULD DISTURB 1 OR MORE ACRES, THE PERMIT HOLDER(S) SHALL SUBMIT A PERMIT APPLICATION FOR STORMWATER DISCHARGE (COR400000 PERMIT) TO THE CDPHE WATER QUALITY DIVISION. THE APPLICATION CONTAINS CERTIFICATION OF COMPLETION OF A SWMP, OF WHICH THIS GEC PLAN MAY BE A PART. FOR INFORMATION OR APPLICATION MATERIALS CONTACT: COLORADO DEPARTMENT OF PUBLIC HEALTH AND ENVIRONMENT WATER QUALITY CONTROL DIVISION WQCD -PERMITS 4300 CHERRY CREEK DRIVE SOUTH DENVER, CO 80246-1530 ATTN: PERMITS UNIT



SITE MAP
SCALE: 1"=1,000'

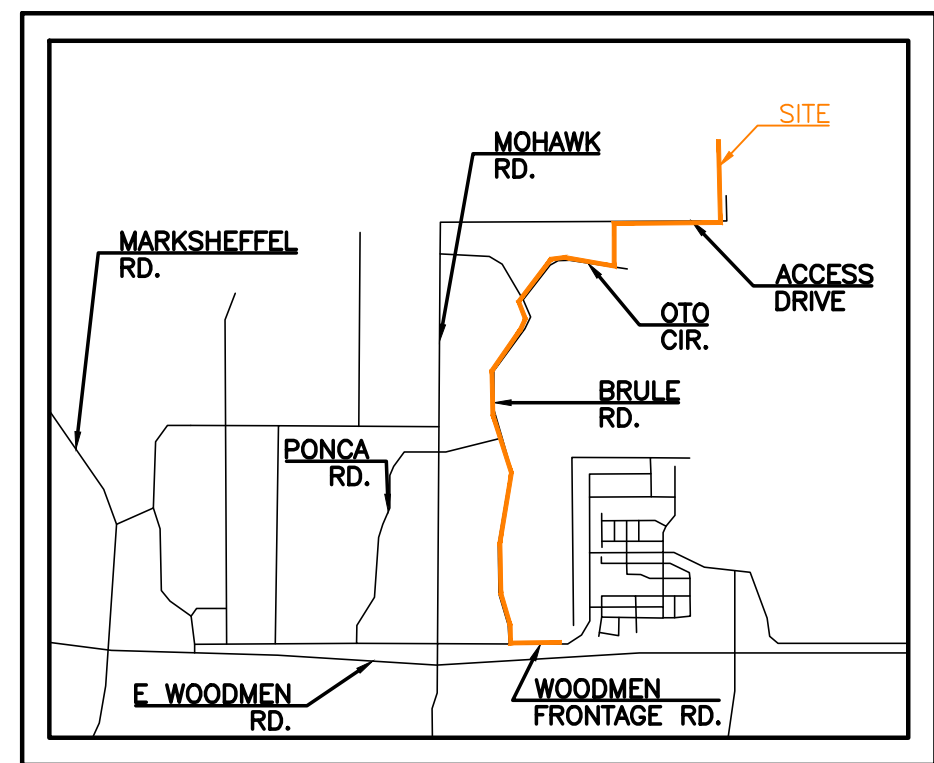


GENERAL NOTES

- IT SHALL BE THE RESPONSIBILITY OF THE CONTRACTOR TO VERIFY THE EXISTENCE AND LOCATION OF ALL UNDERGROUND UTILITIES ALONG THE SITE. THE OMISSION FROM OR THE INCLUSION OF UTILITY LOCATIONS ON THE PLANS IS NOT TO BE CONSIDERED AS THE NON-EXISTENCE OF OR A DEFINITE LOCATION OF EXISTING UNDERGROUND UTILITIES.
- THE CONTRACTOR WILL TAKE THE NECESSARY PRECAUTIONS TO PROTECT EXISTING UTILITIES, BUILDINGS, FENCES, AND ROADWAYS FROM DAMAGE DUE TO THIS OPERATION. ANY DAMAGE TO THE ABOVE WILL BE REPAIRED AT THE CONTRACTOR'S EXPENSE, AND ANY SERVICE DISRUPTION WILL BE SETTLED BY THE CONTRACTOR.
- AS DETERMINED BY THE FLOOD INSURANCE RATE MAP, COMMUNITY PANEL #S 08041C0545G & 08041C0561G, EFFECTIVE DATES DECEMBER 7, 2018, NO PORTION OF THIS SITE IS LOCATED WITHIN A DESIGNATED 100-YEAR F.E.M.A. FLOODPLAIN.
- NO BATCH PLANTS ARE PROPOSED FOR THIS PROJECT.
- ALL EXISTING UTILITY LOCATIONS HAVE BEEN SKETCHED IN FROM OTHER DRAWINGS AND ARE APPROXIMATE. THEY HAVE NOT BEEN SURVEYED.

EROSION CONTROL COST OPINION

1. 3.40 AC-SEEDING & MULCH @ \$785/AC	\$	2,669
2. 1 EA-FUEL SPILL KIT @ \$200.00/EA	\$	200
3. 10 LF-SEDIMENT CONTROL LOGS \$2.75/LF	\$	28
4. 40% MAINTENANCE AND REPLACEMENT	\$	1,159
TOTAL	\$	4,056



VICINITY MAP
N.T.S.

DESCRIPTION OF ACTIVITIES:

THE DEVELOPER PROPOSES TO INSTALL UNDERGROUND ELECTRIC UTILITIES AS WELL AS ASSOCIATED ELECTRIC VAULTS FROM AN AREA NORTH OF WOODMEN FRONTAGE ROAD AND SOUTH OF THE ELECTRIC SUBSTATION LOCATED AT 9167 MOHAWK ROAD, ALONG BRULE ROAD AND OTO CIRCLE. THE INSTALLATION TRAVELS WEST ALONG OTO CIRCLE FOR ABOUT HALF A MILE BEFORE TRAVELLING SOUTH ALONG BRULE ROAD FOR ABOUT 1 MILE AND ENDING NEAR THE INTERSECTION OF BRULE ROAD AND WOODMEN FRONTAGE ROAD. THE MAJORITY OF THIS PROJECT WILL BE INSTALLED BY OPEN CUT TRENCHING BUT DIRECTIONAL BORING WILL BE USED TO CROSS ROADS AND DRIVEWAYS. THE SITE CONSISTS OF APPROXIMATELY 3.40 ACRES OF UNDEVELOPED PRAIRIE LOCATED IN EL PASO COUNTY.

EROSION CONTROL MEASURES SHALL BE IMPLEMENTED IN A MANNER THAT WILL PROTECT PROPERTIES AND PUBLIC FACILITIES FROM THE ADVERSE EFFECTS OF EROSION AND SEDIMENTATION AS A RESULT OF CONSTRUCTION AND EARTHWORK ACTIVITIES. BRULE ROAD AND OTO ROAD WILL BE USED FOR ACCESS TO THE SITE. IT IS ANTICIPATED THAT CONSTRUCTION ACTIVITIES WILL OCCUR BETWEEN SPRING OF 2026 AND FALL OF 2026, AT WHICH POINT IT WILL BE CONSIDERED COMPLETED.

CONSTRUCTION PHASING IS ANTICIPATED TO OCCUR AS FOLLOWS:
PHASE 1:
 PRIOR TO START OF CONSTRUCTION, INITIAL EROSION CONTROL MEASURES TO BE INSTALLED INCLUDE SEDIMENT CONTROL LOG (SCL).
PHASE 2:
 ALL PREVIOUSLY INSTALLED BMP'S SHALL REMAIN IN PLACE UNTIL A LATER PHASE.

PHASE 3:
 ANY AREA THAT IS GOING TO REMAIN IN AN INTERIM STATE FOR MORE THAN 60 DAYS SHALL BE SEED IN ORDER TO ESTABLISH A VEGETATIVE COVER UNTIL THE FINAL LANDSCAPING IS INSTALLED. ALL TEMPORARY SOIL EROSION CONTROL MEASURES AND BMP'S SHALL BE MAINTAINED UNTIL PERMANENT SOIL EROSION CONTROL MEASURES ARE IMPLEMENTED AND VEGETATION HAS BEEN ESTABLISHED TO 70% ON AREAS NOT COVERED BY GRAVEL. ONCE VEGETATIVE COVER HAS BEEN ESTABLISHED AT 70% OF THE DISTURBED AREAS, SEDIMENT CONTROL LOG WILL BE REMOVED FROM ANY DIRT STOCKPILE AREAS. THE DIRT STOCKPILES (SP) WILL BE REMOVED AND RE-VEGETATED AS PART OF THIS PHASE.

PHASE 4:
 FINAL CONSTRUCTION ACTIVITIES HAVE BEEN COMPLETED AT THIS POINT. THE PERMANENT EROSION CONTROL MEASURES HAVE BEEN ESTABLISHED.

THE SOILS ON THIS SITE ARE NOTED AS ABOUT 25% BLAKELAKE LOAMY SAND (8), 5% BLAKELAND FLUVAQUENTIC HAPLAQUOLLS (9), AND 70% COLUMBINE GRAVELLY SANDY LOAM (19). THE SOILS ARE IN HYDROLOGIC SOIL GROUP A, THEREFORE, THERE ARE LOW RUNOFF POTENTIALS. THERE ARE NO WETLANDS ON THIS SITE.

THE SITE CONSISTS OF UNDEVELOPED LAND THAT HAS NATURAL VEGETATIVE COVER OF ABOUT 50% CONSISTING OF NATIVE GRASSES BASED ON AERIAL PHOTOS AND A SITE VISIT.

THERE ARE NO POTENTIAL POLLUTANTS EXISTING OR PROPOSED FOR STORAGE ON THIS SITE.

THIS SITE IS WITHIN THE SAND CREEK DRAINAGE BASIN. DRAINAGE TYPICALLY FLOWS FROM THE NORTH TOWARDS THE SOUTH ON THIS SITE.

THE PROPERTY OWNER OR OWNERS REPRESENTATIVE IS RESPONSIBLE FOR INSPECTING AND MAINTAINING THE SITE ON A REGULAR BASIS. INITIAL CRITERIA FOR THE OCCURRENCE OF INSPECTIONS IS AS FOLLOWS:
 ONCE EVERY 14 DAYS OR AFTER ANY PRECIPITATION OR SNOWMELT EVENT THAT SIGNIFICANT ENOUGH TO CAUSE SURFACE EROSION.
 A WRITTEN RECORD OF INSPECTIONS SHALL BE KEPT BY THE OWNER OR OWNERS REPRESENTATIVE AND MADE AVAILABLE TO THE COUNTY UPON REQUEST. THIS WILL CONTINUE UNTIL THE SITE IS STABILIZED AND THE STOCKPILE IS NO LONGER NEEDED.

SHEET INDEX

COVER SHEET	1 OF 6
SITE PLAN	2 OF 6
EROSION AND SEDIMENT CONTROL PLAN	4 OF 6
EROSION AND SEDIMENT CONTROL PLAN	4 OF 6
EROSION AND SEDIMENT CONTROL PLAN	5 OF 6
EROSION CONTROL DETAILS	6 OF 6

SITE DATA

OWNER/PETITIONER:
 MOUNTAIN VIEW ELECTRIC ASSOCIATION
 11140 E. WOODMAN RD
 PEYTON, CO 80931
 MR. DAVID WALDNER, (719) 495-2283

PREPARED BY:
 TERRA NOVA ENGINEERING, INC.
 721 S 23RD STREET
 COLORADO SPRINGS, CO 80904
 (719) 635-6422 OFFICE
 (719) 499-2255 MOBILE

AREA

TOTAL AREA TO BE CLEARED, EXCAVATED, GRADED OR DISTURBED IS 3.40± ACRES.

VOLUME

EARTHWORK VOLUMES: N/A

ENGINEER'S STATEMENT

THIS GRADING AND EROSION CONTROL PLAN WAS PREPARED UNDER MY DIRECTION AND SUPERVISION AND IS CORRECT TO THE BEST OF MY KNOWLEDGE AND BELIEF. SAID PLAN HAS BEEN PREPARED ACCORDING TO THE CRITERIA ESTABLISHED BY THE COUNTY FOR GRADING AND EROSION CONTROL PLANS. I ACCEPT RESPONSIBILITY FOR ANY LIABILITY CAUSED BY ANY NEGLIGENT ACTS, ERRORS, OR OMISSIONS ON MY PART IN PREPARING THIS REPORT.

JOHN FORNANDER, P.E. #66415
 FOR AND ON BEHALF OF TERRA NOVA ENGINEERING, INC.



OWNER'S STATEMENT

I, THE OWNER/DEVELOPER HAVE READ AND WILL COMPLY WITH THE REQUIREMENTS OF THE GRADING AND EROSION CONTROL PLAN.

OWNER NAME: **The Owner/Applicant must sign, and date this sheet.** DATE: _____

EL PASO COUNTY APPROVAL

COUNTY PLAN REVIEW IS PROVIDED ONLY FOR GENERAL CONFORMANCE WITH COUNTY DESIGN CRITERIA. THE COUNTY IS NOT RESPONSIBLE FOR THE ACCURACY AND ADEQUACY OF THE DESIGN, DIMENSIONS, AND/OR ELEVATIONS WHICH SHALL BE CONFIRMED AT THE JOB SITE. THE COUNTY THROUGH THE APPROVAL OF THIS DOCUMENT ASSUMES NO RESPONSIBILITY FOR COMPLETENESS AND/OR ACCURACY OF THIS DOCUMENT.

FILED IN ACCORDANCE WITH THE REQUIREMENTS OF THE EL PASO COUNTY LAND DEVELOPMENT CODE, DRAINAGE CRITERIA MANUAL VOLUMES 1 AND 2, AND ENGINEERING CRITERIA MANUAL AS AMENDED.

IN ACCORDANCE WITH ECM SECTION 1.12, THESE CONSTRUCTION DOCUMENTS WILL BE VALID FOR CONSTRUCTION FOR A PERIOD OF 2 YEARS FROM THE DATE SIGNED BY THE EL PASO COUNTY ENGINEER. IF CONSTRUCTION HAS NOT STARTED WITHIN THOSE 2 YEARS, THE PLANS WILL NEED TO BE RESUBMITTED FOR APPROVAL, INCLUDING PAYMENT OF REVIEW FEES AT THE PLANNING AND COMMUNITY DEVELOPMENT DIRECTORS DISCRETION.

JOSHUA J. PALMER, P.E.
 COUNTY ENGINEER / ECM ADMINISTRATOR

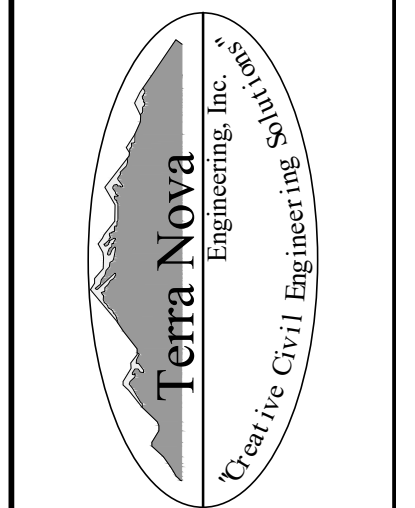
DATE _____

PCD FILE NO. CDR2513

NO.	DESCRIPTION	DATE

UNTIL SUCH TIME AS THESE DRAWINGS ARE APPROVED BY THE AGENCIES, THESE DRAWINGS ARE NOT TO BE USED FOR ANY PURPOSES DESIGNATED BY WRITTEN AUTHORIZATION.

PREPARED FOR:
MVEA
ATTN: DAVE WALDNER
 11140 E. WOODMEN RD
 PEYTON, CO 80831
 (719) 495-2283



721 S. 23RD STREET
 COLORADO SPRINGS, CO 80904
 OFFICE: 719-635-6422
 FAX: 719-635-6426
 www.tnenginc.com



VOLLMER SUBSTATION WEST CIRCUIT	
GRADING, EROSION, & SEDIMENT CONTROL PLAN	
COVER SHEET	
DESIGNED BY	JF
DRAWN BY	JF
CHECKED BY	
H-SCALE	AS SHOWN
V-SCALE	NA
JOB NO.	2583.00
DATE ISSUED	03/18/26
SHEET NO.	1 OF 6

STANDARD NOTES FOR EL PASO COUNTY CONSTRUCTION PLANS
(SOME OF THESE NOTES MAY NOT BE RELEVANT TO THESE PLANS)

- ALL DRAINAGE AND ROADWAY CONSTRUCTION SHALL MEET THE STANDARDS AND SPECIFICATIONS OF THE CITY OF COLORADO SPRINGS/EL PASO COUNTY DRAINAGE CRITERIA MANUAL, VOLUMES 1 AND 2, AND THE EL PASO COUNTY ENGINEERING CRITERIA MANUAL.
- CONTRACTOR SHALL BE RESPONSIBLE FOR THE NOTIFICATION AND FIELD NOTIFICATION OF ALL EXISTING UTILITIES, WHETHER SHOWN ON THE PLANS OR NOT, BEFORE BEGINNING CONSTRUCTION. LOCATION OF EXISTING UTILITIES SHALL BE VERIFIED BY THE CONTRACTOR PRIOR TO CONSTRUCTION. CALL 811 TO CONTACT THE UTILITY NOTIFICATION CENTER OF COLORADO (UNCC).
- CONTRACTOR SHALL KEEP A COPY OF THESE APPROVED PLANS, THE GRADING AND EROSION CONTROL PLAN, THE STORMWATER MANAGEMENT PLAN (SWMP), THE SOILS AND GEOTECHNICAL REPORT, AND THE APPROPRIATE DESIGN AND CONSTRUCTION STANDARDS AND SPECIFICATIONS AT THE JOB SITE AT ALL TIMES, INCLUDING THE FOLLOWING:
 - EL PASO COUNTY ENGINEERING CRITERIA MANUAL (ECM)
 - CITY OF COLORADO SPRINGS/EL PASO COUNTY DRAINAGE CRITERIA MANUAL, VOLUMES 1 AND 2
 - COLORADO DEPARTMENT OF TRANSPORTATION (CDOT) STANDARD SPECIFICATIONS FOR ROAD AND BRIDGE CONSTRUCTION
 - CDOT M & S STANDARDS

- NOTWITHSTANDING ANYTHING DEPICTED IN THESE PLANS IN WORDS OR GRAPHIC REPRESENTATION, ALL DESIGN AND CONSTRUCTION RELATED TO ROADS, STORM DRAINAGE AND EROSION CONTROL SHALL CONFORM TO THE STANDARDS AND REQUIREMENTS OF THE MOST RECENT VERSION OF THE RELEVANT ADOPTED EL PASO COUNTY STANDARDS, INCLUDING THE LAND DEVELOPMENT CODE, THE ENGINEERING CRITERIA MANUAL, THE DRAINAGE CRITERIA MANUAL, AND THE DRAINAGE CRITERIA MANUAL VOLUME 2. ANY DEVIATIONS FROM REGULATIONS AND STANDARDS MUST BE REQUESTED, AND APPROVED, IN WRITING. ANY MODIFICATIONS NECESSARY TO MEET CRITERIA AFTER-THE-FACT WILL BE ENTIRELY THE DEVELOPER'S RESPONSIBILITY TO RECTIFY.
- IT IS THE DESIGN ENGINEER'S RESPONSIBILITY TO ACCURATELY SHOW EXISTING CONDITIONS, BOTH ONSITE AND OFFSITE, ON THE CONSTRUCTION PLANS. ANY MODIFICATIONS NECESSARY DUE TO CONFLICTS, OMISSIONS, OR CHANGED CONDITIONS WILL BE ENTIRELY THE DEVELOPER'S RESPONSIBILITY TO RECTIFY.

- CONTRACTOR SHALL SCHEDULE A PRE-CONSTRUCTION MEETING WITH EL PASO COUNTY PLANNING AND COMMUNITY DEVELOPMENT (PCD) - INSPECTIONS, PRIOR TO STARTING CONSTRUCTION.
- IT IS THE CONTRACTOR'S RESPONSIBILITY TO UNDERSTAND THE REQUIREMENTS OF ALL JURISDICTIONAL AGENCIES AND TO OBTAIN ALL REQUIRED PERMITS, INCLUDING BUT NOT LIMITED TO EL PASO COUNTY EROSION AND STORMWATER QUALITY CONTROL PERMIT (ESQCP), REGIONAL BUILDING FLOODPLAIN DEVELOPMENT PERMIT, U.S. ARMY CORPS OF ENGINEERS-ISSUED 401 AND/OR 404 PERMITS, AND COUNTY AND STATE FUGITIVE DUST PERMITS.

- CONTRACTOR SHALL NOT DEVIATE FROM THE PLANS WITHOUT FIRST OBTAINING WRITTEN APPROVAL FROM THE DESIGN ENGINEER AND PCD. CONTRACTOR SHALL NOTIFY THE DESIGN ENGINEER IMMEDIATELY UPON DISCOVERY OF ANY ERRORS OR INCONSISTENCIES.
- ALL STORM DRAIN PIPE SHALL BE CLASS III RCP UNLESS OTHERWISE NOTED AND APPROVED BY PCD.

- CONTRACTOR SHALL COORDINATE GEOTECHNICAL TESTING PER ECM STANDARDS. PAVEMENT DESIGN SHALL BE APPROVED BY EL PASO COUNTY PCD PRIOR TO PLACEMENT OF CURB AND GUTTER AND PAVEMENT.
- ALL CONSTRUCTION TRAFFIC MUST ENTER/EXIT THE SITE AT APPROVED CONSTRUCTION ACCESS POINTS.

- SIGHT VISIBILITY TRIANGLES AS IDENTIFIED IN THE PLANS SHALL BE PROVIDED AT ALL INTERSECTIONS. OBSTRUCTIONS GREATER THAN 18 INCHES ABOVE FLOWLINE ARE NOT ALLOWED WITHIN SIGHT TRIANGLES.

- SIGNING AND STRIPING SHALL COMPLY WITH EL PASO COUNTY DOT AND MUTCD CRITERIA. IF APPLICABLE, ADDITIONAL SIGNING AND STRIPING NOTES WILL BE PROVIDED.]

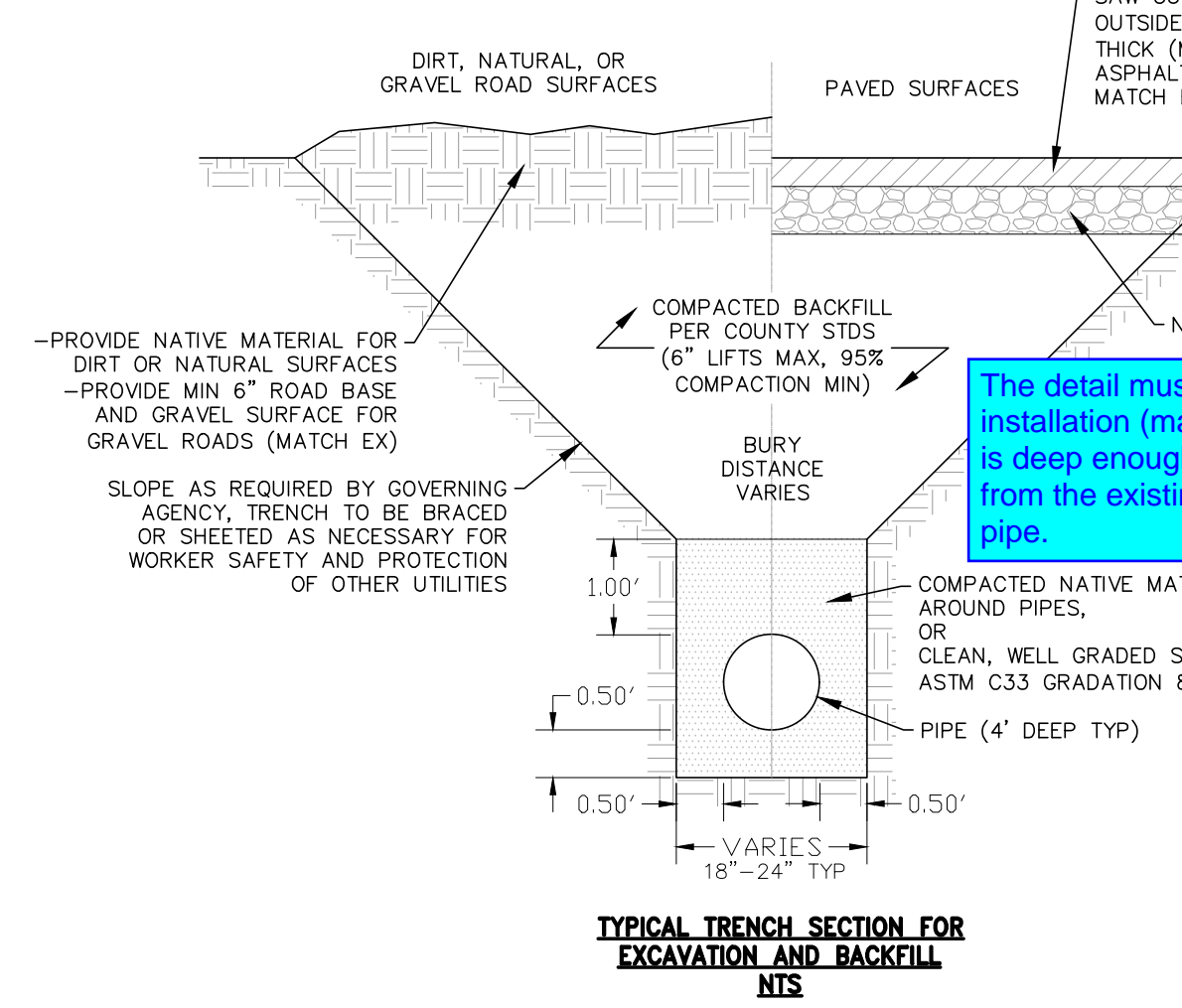
- CONTRACTOR SHALL OBTAIN ANY PERMITS REQUIRED BY EL PASO COUNTY DOT, INCLUDING WORK WITHIN THE RIGHT-OF-WAY AND SPECIAL TRANSPORT PERMITS.

- THE LIMITS OF CONSTRUCTION SHALL REMAIN WITHIN THE PROPERTY LINE UNLESS OTHERWISE NOTED. THE OWNER/DEVELOPER SHALL OBTAIN WRITTEN PERMISSION AND EASEMENTS, WHERE REQUIRED, FROM ADJOINING PROPERTY OWNER(S) PRIOR TO ANY OFF-SITE DISTURBANCE, GRADING, OR CONSTRUCTION.

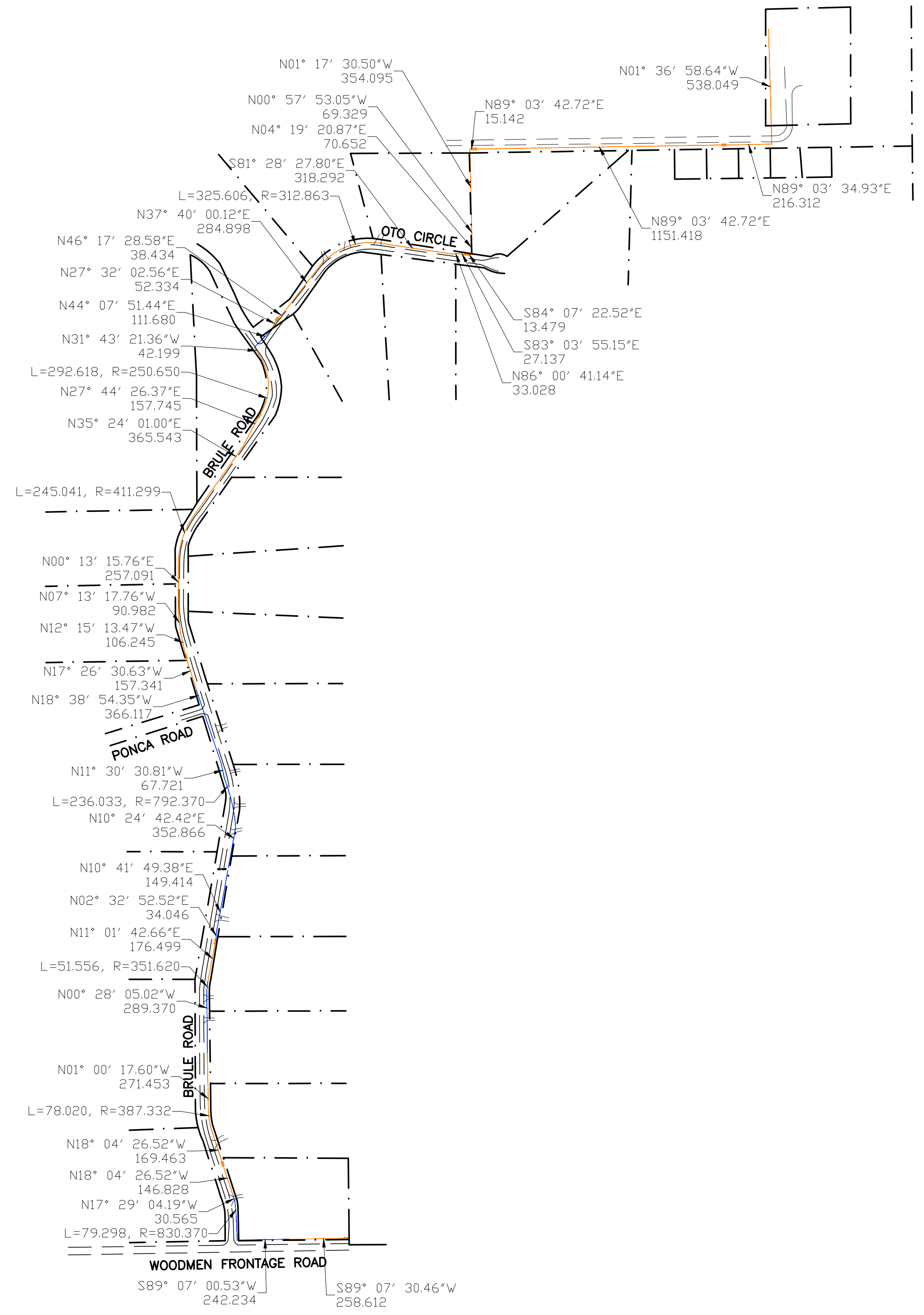
- EL PASO COUNTY DOES NOT OWN AND IS NOT RESPONSIBLE FOR THE UNDERDRAINS OR GROUNDWATER DISCHARGE SYSTEMS SHOWN ON THESE PLANS AND ASSUMES NO LIABILITY FOR WATER RIGHTS ADMINISTRATION BY APPROVING THESE PLANS. MAINTENANCE AND WATER RIGHTS ARE THE RESPONSIBILITY OF THE DEVELOPER.

Add the following note: 17. The Contractor shall inform the private property owners abutting this project of the up coming work two week prior to the start of construction.

NOTE ADDED.



NOTE ADDED.

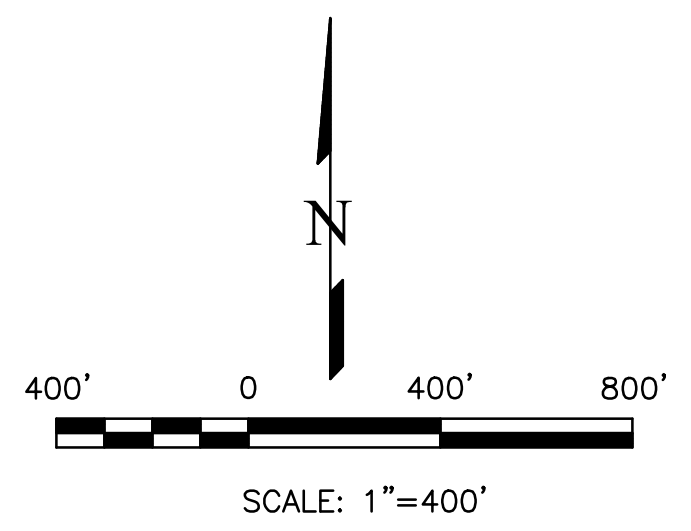


GRADING PLAN NOTES

- PROJECT LOCATION IS IN EL PASO COUNTY COLORADO. APPROXIMATE SITE LOCATION IS AT LATITUDE 38.95586°, LONGITUDE -104.65214°.
- ALL MEASUREMENTS ARE IN FEET, UNLESS SPECIFIED OTHERWISE.
- FINAL STABILIZATION REQUIREMENTS SHALL BE BASED ON THE REQUIREMENTS OF THE STORM WATER POLLUTION PREVENTION PLAN.
- THE CONTRACTOR SHALL VERIFY ALL EXISTING CONDITIONS, UTILITIES AND CULVERTS PRIOR TO CONSTRUCTION. THE CONTRACTOR SHALL INFORM THE ENGINEER OF ANY DISCREPANCIES BETWEEN THE EXISTING CONDITIONS AND THE PLANS.
- CONTRACTOR TO PROTECT EXISTING UTILITIES AND MAINTAIN EXISTING DRAINAGE PATTERNS AT ALL TIMES.
- CONTRACTOR TO VERIFY RIGHT OF WAY LIMITS PRIOR TO CONSTRUCTION.
- EXISTING FEATURES (FENCE, MAILBOX, SIGN, ETC.) THAT ARE DISTURBED AS PART OF THE TEMPORARY IMPROVEMENT SHALL BE REINSTALLED OR REPLACED IN A CONDITION EQUAL TO OR BETTER THAN THE PRECONSTRUCTION CONDITION.
- CONTRACTOR SHALL CALL 811, ONE CALL ENTITIES PRIOR TO CONSTRUCTION. ALL HAZARDS SHALL BE ASSESSED PRIOR TO CONSTRUCTION.
- EXCAVATED SOIL SHALL BE PLACED ON THE UPSTREAM SIDE OF THE TRENCH.
- SOIL WILL BE PLACED BESIDE THE TRENCH WHEN IT IS DUG UP AND PLACED BACK IN THE TRENCH ONCE WORK IN THAT AREA IS COMPLETED.
- IT HAS BEEN REQUIRED THAT DISTANCE AND BEARING CALLOUTS BE ADDED TO THIS SHEET. THE DESIGN ENGINEER DOES NOT CONSIDER THEM TO BE USEFUL TO THESE PLANS.

LEGEND

- PROPOSED U/G ELECTRIC BY OPEN CUT EXCAVATION
- PROPOSED U/G ELEC BY DIRECTIONAL BORE (APPROXIMATE LOCATIONS)
- - - - EXISTING PROPERTY LINE/ROW
- - - - EXISTING ASPHALT
- - - - LIMITS OF DISTURBANCE/CONSTRUCTION



THIS DESIGN WAS PREPARED UNDER MY DIRECT SUPERVISION FOR AND ON BEHALF OF TERRA NOVA ENGINEERING, INC.

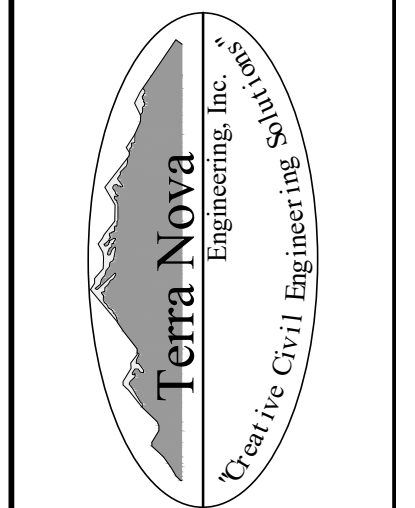


JOHN FORLANDER, P.E.
COLORADO P.E. NO. 66415

REVISIONS NO.	DESCRIPTION	DATE

UNTIL SUCH TIME AS THESE DRAWINGS ARE APPROVED BY THE APPROPRIATE REVIEWING AGENCIES, INCORPORATING THEIR USE IS NOT APPROVED FOR THE PURPOSES DESIGNATED BY WRITTEN AUTHORIZATION.

PREPARED FOR:
MVEA
ATTN: DAVE WALDNER
11140 E. WOODMEN RD
PEYTON, CO 80831
(719) 495-2283

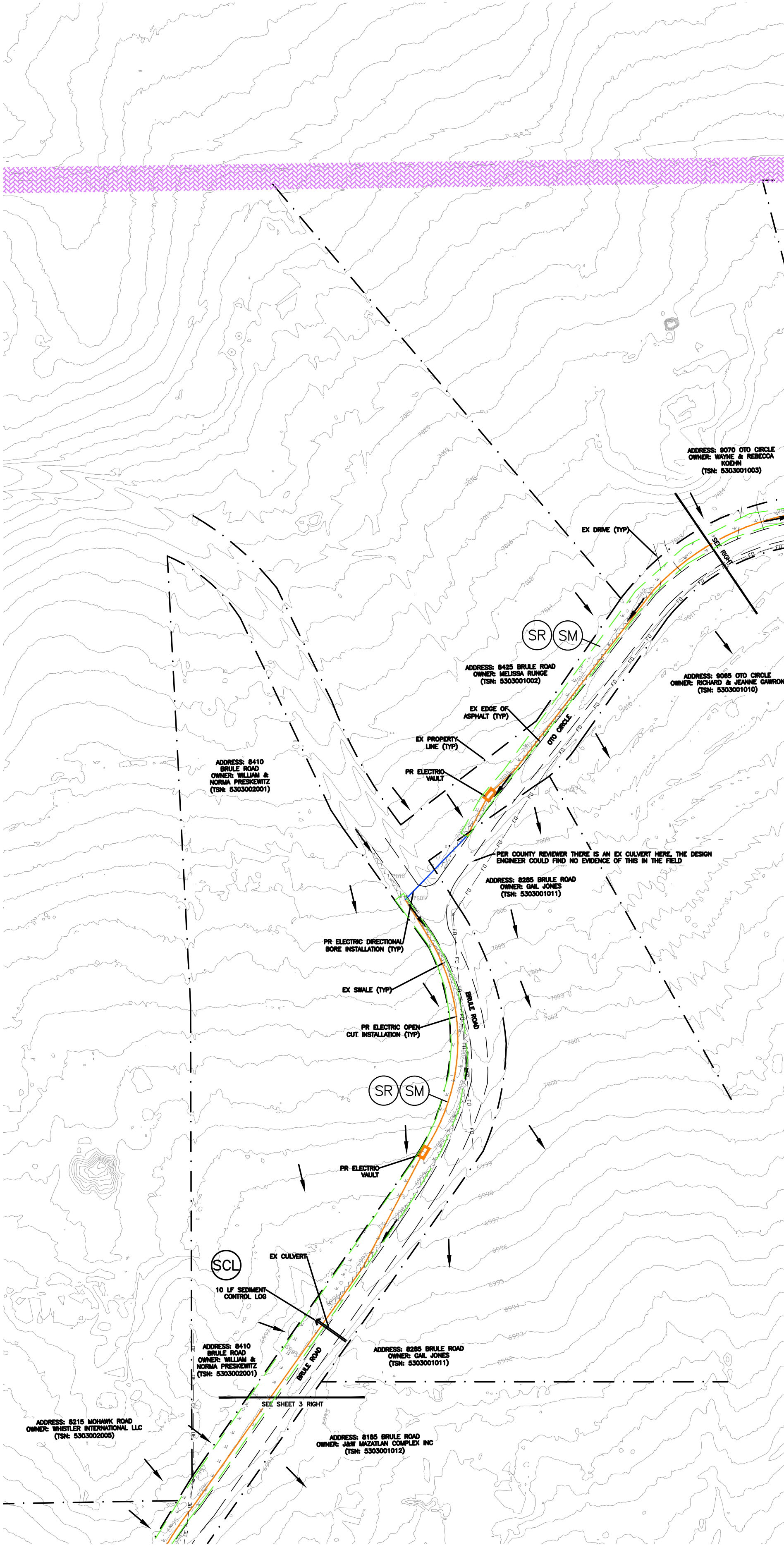


721 S. 23RD STREET
COLORADO SPRINGS, CO 80904
OFFICE: 719-635-6422
FAX: 719-635-6426
www.tneng.com

VOLLMER SUBSTATION WEST CIRCUIT

GRADING, EROSION, & SEDIMENT CONTROL PLAN
SITE MAP

DESIGNED BY	JF
DRAWN BY	JF
CHECKED BY	
H-SCALE	AS SHOWN
V-SCALE	NA
JOB NO.	2583.00
DATE ISSUED	03/18/26
SHEET NO.	2 OF 6



NOTE ADDED.

You are proposing construction on a private property without an easement (provide a copy of the recorded easement that allows you to the access and construction on it). Please show and label the proposed / existing easement.

THE EASEMENT IS SHOWN AND LABELED. I HAVE ADDED THE PLAT NAME AND NUMBER TO THE CALLOUT.

EROSION CONTROL LEGEND

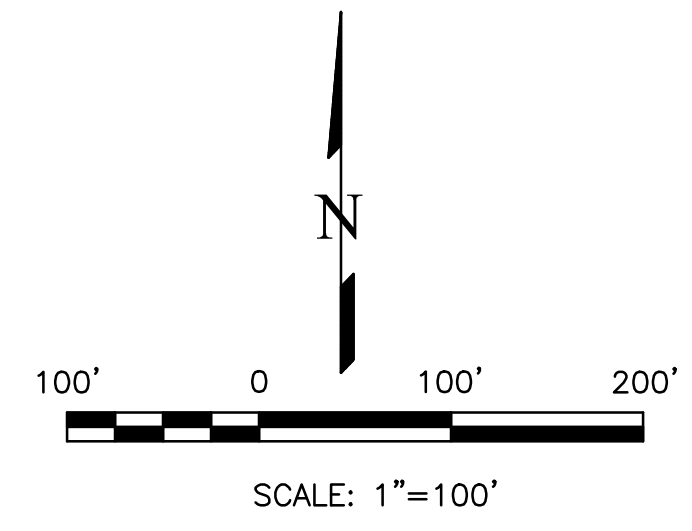
KEY	TITLE	SYMBOL
FINAL	PERMANENT SEEDING AND MULCHING (FINAL)	[Green hatched]
INTERIM	SEDIMENT CONTROL LOG (INTERIM)	[Black line]
FINAL	SURFACE ROUGHENING (INTERIM/FINAL)	[Red hatched]

LEGEND

[Wavy line]	EXISTING ROADSIDE DITCH
[Green dashed line]	LIMITS OF DISTURBANCE/CONSTRUCTION
[Thin grey line]	EXISTING 2' CONTOUR
[Arrow]	EXISTING FLOW DIRECTION
[Orange line]	PROPOSED U/G ELECTRIC BY OPEN CUT EXCAVATION
[Blue line]	PROPOSED U/G ELEC BY DIRECTIONAL BORE (APPROXIMATE LOCATIONS)
[Thin grey line]	EXISTING UNDERGROUND FIBER OPTIC LINE
[Thin grey line]	EXISTING UNDERGROUND DATA LINE
[Thin grey line]	EXISTING OVERHEAD ELECTRIC LINE
[Thin grey line]	EXISTING UNDERGROUND ELECTRIC LINE
[Thin grey line]	EXISTING GAS LINE
[Thin grey line]	EXISTING WATER LINE
[Dashed line]	EXISTING PROPERTY LINE/ROW

GENERAL NOTES

- CONTRACTOR TO MARK UP PLAN SHOWING ACTUAL FIELD INSTALLATION OF EROSION CONTROL B.M.P.S.
- BROADCAST SEEDING SHALL BE PLACED OVER DISTURBED AREAS ONCE THE CONSTRUCTION IS DONE. ALL AREAS TO BE VEGETATED WITH SEEDING SHOULD ALSO BE TEMPORARILY STABILIZED VIA SURFACE ROUGHENING OR SOME OTHER MEANS.
- TOTAL LIMITS OF DISTURBANCE ESTIMATED TO BE APPROXIMATELY 3.40 AC.
- WHEN WORK HAS BEEN COMPLETED, CONTRACTOR SHALL RETURN ANY DISTURBED AREAS TO THEIR ORIGINAL GRADES.
- MAX ALLOWABLE EXCAVATED/STOCKPILED SLOPE IS 2:1.
- BRULE ROAD, WOODMEN FRONTAGE ROAD AND OTO CIRCLE WILL BE USED FOR ACCESS TO THE PROJECT. THESE ROADS WILL BE CLEARED/SWEPT AS NECESSARY TO REMOVE ANY SIGNIFICANT SEDIMENT ACCUMULATION AND PREVENT MIGRATION OF UNEVEN DIRT CLOUDS/MUD.
- PROPERTY LINES SHOWN ON THE PLANS ARE APPROXIMATE.
- WORK ALONG THIS LINE WILL BE DONE WITHIN A 20' MVEA EASEMENT, OUTSIDE OF THE PUBLIC ROW.
- VEGETATIVE COVER IS APPROXIMATELY 50% CONSISTING OF NATIVE GRASSES.
- AS DETERMINED BY THE FLOOD INSURANCE RATE MAP, COMMUNITY PANEL # 08041C0533G, EFFECTIVE DATES DECEMBER 7, 2018, NO PORTION OF THIS SITE IS LOCATED WITHIN A DESIGNATED 100-YEAR F.E.M.A. FLOODPLAIN.
- THE CONTRACTOR MUST RETURN THE ENTIRE SITE TO PRE CONSTRUCTION CONDITIONS OR BETTER CONDITIONS.
- SURFACE ROUGHEN ALL SEED AND MULCH AREAS.



THIS DESIGN WAS PREPARED UNDER MY DIRECT SUPERVISION FOR AND ON BEHALF OF TERRA NOVA ENGINEERING, INC.

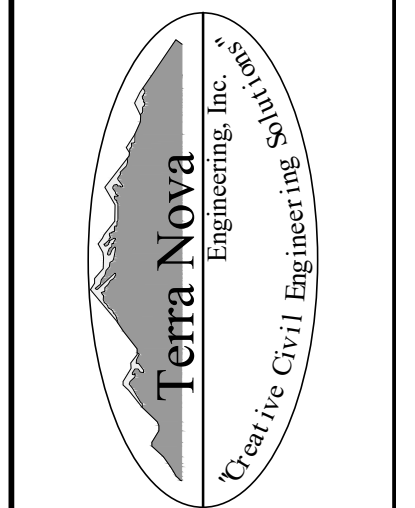


JOHN FORLANDER, P.E.
 COLORADO P.E. NO. 66415

REVISIONS	NO.	DESCRIPTION	DATE

UNTIL SUCH TIME AS THESE DRAWINGS ARE APPROVED BY THE RELEVANT AGENCIES, INCORPORATING THEIR USE FOR THE PURPOSES DESIGNATED BY WRITTEN AUTHORIZATION.

PREPARED FOR:
MVEA
 ATTN: DAVE WALDNER
 11140 E. WOODMEN RD
 PEYTON, CO 80831
 (719) 495-2283



721 S. 23RD STREET
 COLORADO SPRINGS, CO 80904
 OFFICE: 719-635-6422
 FAX: 719-635-6426
 www.tneng.com

VOLLER SUBSTATION WEST CIRCUIT
 GRADING, EROSION, & SEDIMENT CONTROL PLAN
 EROSION CONTROL PLAN

DESIGNED BY	JF
DRAWN BY	JF
CHECKED BY	
H-SCALE	AS SHOWN
V-SCALE	NA
JOB NO.	2583.00
DATE ISSUED	03/18/26
SHEET NO.	4 OF 6

EROSION CONTROL LEGEND

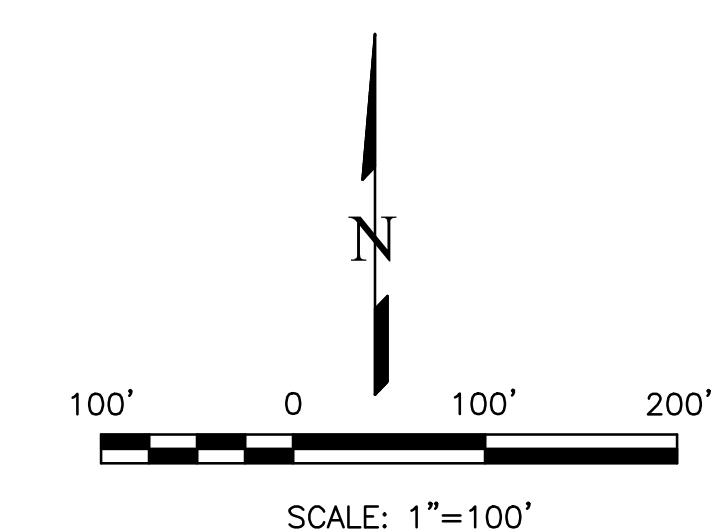
KEY	TITLE	SYMBOL
FINAL (SM)	PERMANENT SEEDING AND MULCHING (FINAL)	[Green dashed box]
INTERIM (SSA)	STABILIZED STAGING AREA (INTERIM)	[Green dotted box]
FINAL (SR)	SURFACE ROUGHENING (INTERIM/FINAL)	[Green dashed line]

LEGEND

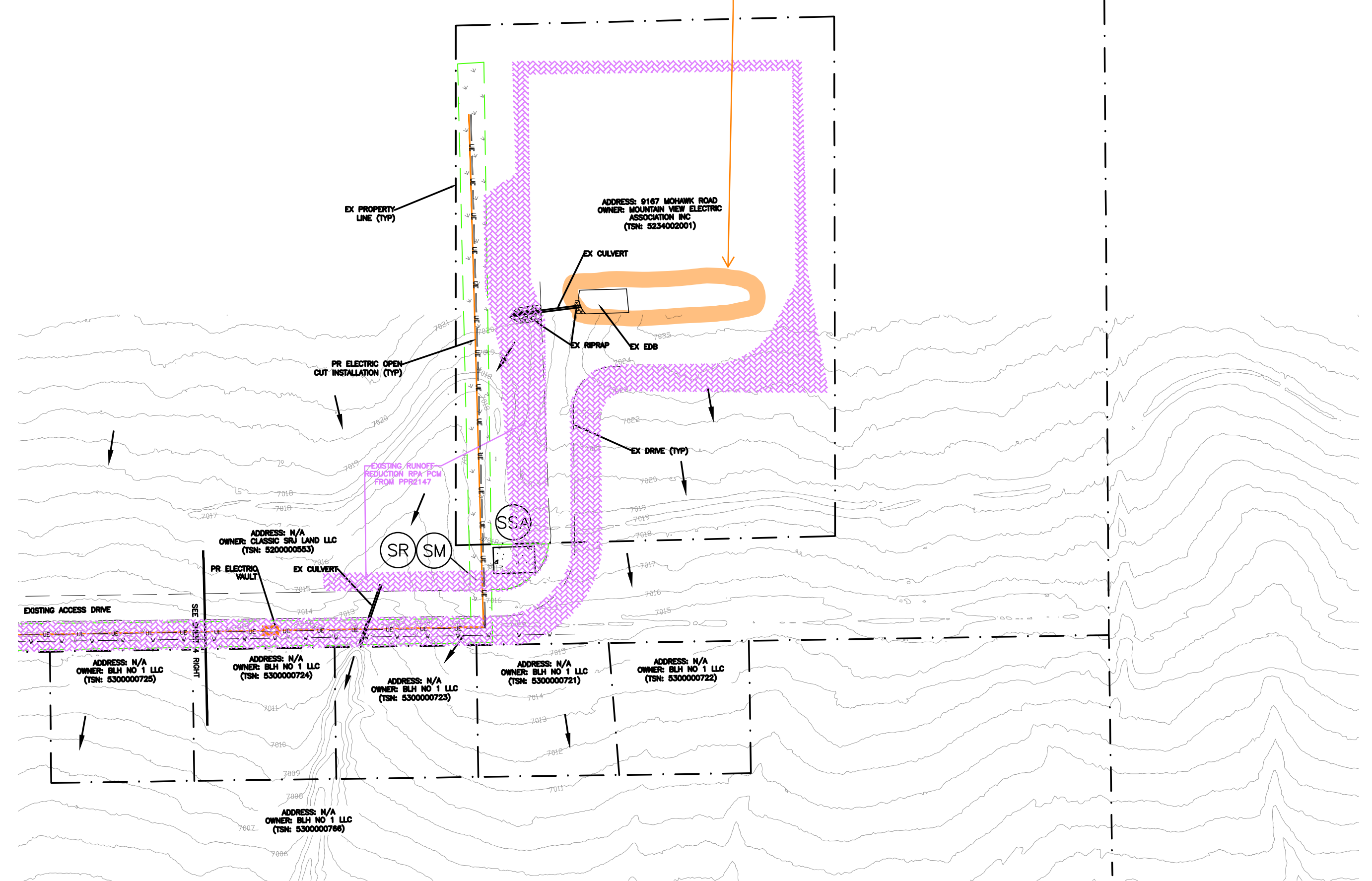
- ~ ~ ~ ~ ~ EXISTING ROADSIDE DITCH
- — — — — LIMITS OF DISTURBANCE/CONSTRUCTION
- — — — — EXISTING 2' CONTOUR
- EXISTING FLOW DIRECTION
- — — — — PROPOSED U/G ELECTRIC BY OPEN CUT EXCAVATION
- — — — — PROPOSED U/G ELEC BY DIRECTIONAL BORE (APPROXIMATE LOCATIONS)
- — — — — EXISTING UNDERGROUND FIBER OPTIC LINE (FD)
- — — — — EXISTING UNDERGROUND DATA LINE (TEL)
- — — — — EXISTING OVERHEAD ELECTRIC LINE (OE)
- — — — — EXISTING UNDERGROUND ELECTRIC LINE (UE)
- — — — — EXISTING GAS LINE (GAS)
- — — — — EXISTING WATER LINE (W)
- - - - - EXISTING PROPERTY LINE/ROW

GENERAL NOTES

1. CONTRACTOR TO MARK UP PLAN SHOWING ACTUAL FIELD INSTALLATION OF EROSION CONTROL BMPs.
2. BROADCAST SEEDING SHALL BE PLACED OVER DISTURBED AREAS ONCE THE CONSTRUCTION IS DONE. ALL AREAS TO BE VEGETATED WITH SEEDING SHOULD ALSO BE TEMPORARILY STABILIZED VIA SURFACE ROUGHENING OR SOME OTHER MEANS.
3. TOTAL LIMITS OF DISTURBANCE ESTIMATED TO BE APPROXIMATELY 3.40 AC.
4. WHEN WORK HAS BEEN COMPLETED, CONTRACTOR SHALL RETURN ANY DISTURBED AREAS TO THEIR ORIGINAL GRADES.
5. MAX ALLOWABLE EXCAVATED/STOCKPILED SLOPE IS 2:1.
6. BRULE ROAD, WOODMEN FRONTAGE ROAD AND OTO CIRCLE WILL BE USED FOR ACCESS TO THE PROJECT. THESE ROADS WILL BE CLEARED/SWEPT AS NECESSARY TO REMOVE ANY SIGNIFICANT SEDIMENT ACCUMULATION AND PREVENT MIGRATION OF UNEVEN DIRT CLODS/MUD.
7. PROPERTY LINES SHOWN ON THE PLANS ARE APPROXIMATE.
8. WORK ALONG THIS LINE WILL BE DONE WITHIN A 20' MVEA EASEMENT, OUTSIDE OF THE PUBLIC ROW.
9. VEGETATIVE COVER IS APPROXIMATELY 50% CONSISTING OF NATIVE GRASSES.
10. AS DETERMINED BY THE FLOOD INSURANCE RATE MAP, COMMUNITY PANEL # 08041C0533G, EFFECTIVE DATES DECEMBER 7, 2018, NO PORTION OF THIS SITE IS LOCATED WITHIN A DESIGNATED 100-YEAR F.E.M.A. FLOODPLAIN.
11. THE CONTRACTOR MUST RETURN THE ENTIRE SITE TO PRE CONSTRUCTION CONDITIONS OR BETTER CONDITIONS.
12. SURFACE ROUGHEN ALL SEED AND MULCH AREAS.

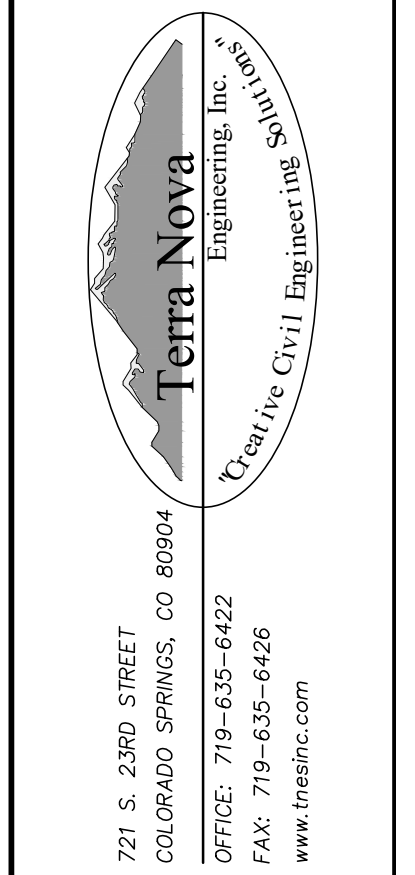


EDB limits appear off compared to aerial images. Please revise.
 I BELIEVE THIS AREA IS CORRECT.



REVISIONS NO.	DESCRIPTION	DATE

PREPARED FOR:
MVEA
 ATTN: DAVE WALDMER
 11140 E. WOODMEN RD
 PEYTON, CO 80831
 (719) 495-2283

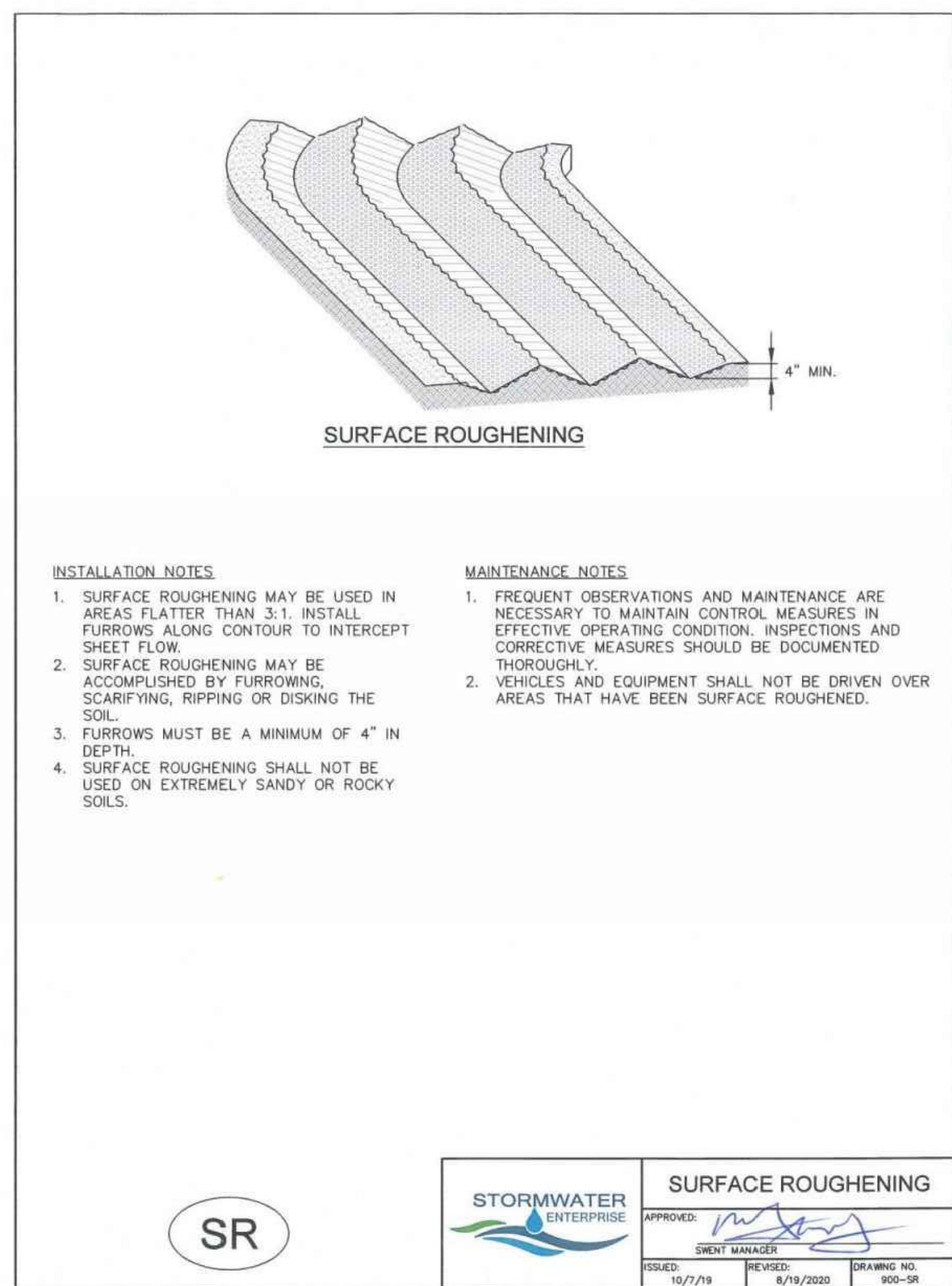


VOLLMER SUBSTATION WEST CIRCUIT
 GRADING, EROSION, & SEDIMENT CONTROL PLAN
 EROSION CONTROL PLAN

THIS DESIGN WAS PREPARED UNDER MY DIRECT SUPERVISION FOR AND ON BEHALF OF TERRA NOVA ENGINEERING, INC.

JOHN FORLANDER, P.E.
 COLORADO P.E. NO. 66415

DESIGNED BY	JF
DRAWN BY	JF
CHECKED BY	
H-SCALE	AS SHOWN
V-SCALE	NA
JOB NO.	2583.00
DATE ISSUED	03/18/26
SHEET NO.	5 OF 6



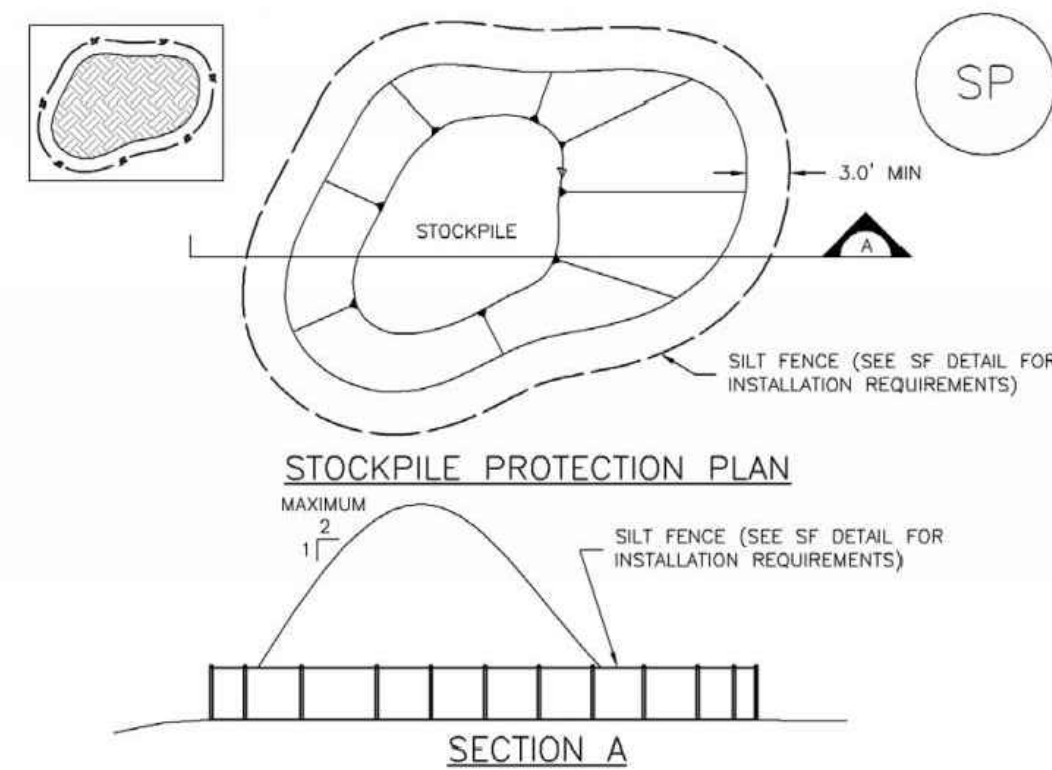
- INSTALLATION NOTES**
1. SURFACE ROUGHENING MAY BE USED IN AREAS FLATTER THAN 3:1. INSTALL FURROWS ALONG CONTOUR TO INTERCEPT SHEET FLOW.
 2. SURFACE ROUGHENING MAY BE ACCOMPLISHED BY FURROWING, SCARIFYING, RIPPING OR DESKING THE SOIL.
 3. FURROWS MUST BE A MINIMUM OF 4" IN DEPTH.
 4. SURFACE ROUGHENING SHALL NOT BE USED ON EXTREMELY SANDY OR ROCKY SOILS.
- MAINTENANCE NOTES**
1. FREQUENT OBSERVATIONS AND MAINTENANCE ARE NECESSARY TO MAINTAIN CONTROL MEASURES IN EFFECTIVE OPERATING CONDITION. INSPECTIONS AND CORRECTIVE MEASURES SHOULD BE DOCUMENTED THOROUGHLY.
 2. VEHICLES AND EQUIPMENT SHALL NOT BE DRIVEN OVER AREAS THAT HAVE BEEN SURFACE ROUGHENED.

SURFACE ROUGHENING

APPROVED: [Signature]

ISSUED: 10/7/19 REVISED: 8/19/2020 DRAWING NO: 900-SR

Stockpile Management (SP) MM-2



- STOCKPILE PROTECTION INSTALLATION NOTES**
1. SEE PLAN VIEW FOR:
 - LOCATION OF STOCKPILES.
 - TYPE OF STOCKPILE PROTECTION.
 2. INSTALL PERIMETER CONTROLS IN ACCORDANCE WITH THEIR RESPECTIVE DESIGN DETAILS. SILT FENCE IS SHOWN IN THE STOCKPILE PROTECTION DETAILS; HOWEVER, OTHER TYPES OF PERIMETER CONTROLS INCLUDING SEDIMENT CONTROL LOGS OR ROCK SOCKS MAY BE SUITABLE IN SOME CIRCUMSTANCES. CONSIDERATIONS FOR DETERMINING THE APPROPRIATE TYPE OF PERIMETER CONTROL FOR A STOCKPILE INCLUDE WHETHER THE STOCKPILE IS LOCATED ON A PERVIOUS OR IMPERVIOUS SURFACE, THE RELATIVE HEIGHTS OF THE PERIMETER CONTROL AND STOCKPILE, THE ABILITY OF THE PERIMETER CONTROL TO CONTAIN THE STOCKPILE WITHOUT FAILING IN THE EVENT THAT MATERIAL FROM THE STOCKPILE SHIFTS OR SLUMPS AGAINST THE PERIMETER, AND OTHER FACTORS.
 3. STABILIZE THE STOCKPILE SURFACE WITH SURFACE ROUGHENING, TEMPORARY SEEDING AND MULCHING, EROSION CONTROL BLANKETS, OR SOIL BINDERS. SOILS STOCKPILED FOR AN EXTENDED PERIOD (TYPICALLY FOR MORE THAN 60 DAYS) SHOULD BE SEEDED AND MULCHED WITH A TEMPORARY GRASS COVER ONCE THE STOCKPILE IS PLACED (TYPICALLY WITHIN 14 DAYS). USE OF MULCH ONLY OR A SOIL BINDER IS ACCEPTABLE IF THE STOCKPILE WILL BE IN PLACE FOR A MORE LIMITED TIME PERIOD (TYPICALLY 30-60 DAYS).
 4. FOR TEMPORARY STOCKPILES ON THE INTERIOR PORTION OF A CONSTRUCTION SITE, WHERE OTHER DOWNGRADIENT CONTROLS, INCLUDING PERIMETER CONTROL, ARE IN PLACE, STOCKPILE PERIMETER CONTROLS MAY NOT BE REQUIRED.

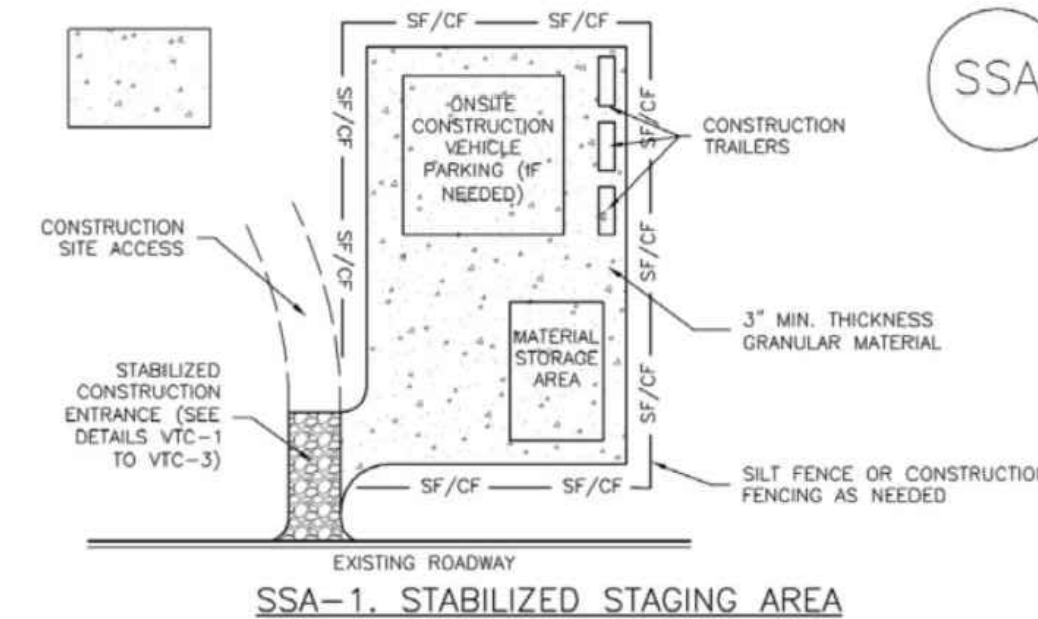
November 2010 Urban Drainage and Flood Control District SP-3
Urban Storm Drainage Criteria Manual Volume 3

MM-2 Stockpile Management (SM)

- STOCKPILE PROTECTION MAINTENANCE NOTES**
1. INSPECT BMPs EACH WORKDAY, AND MAINTAIN THEM IN EFFECTIVE OPERATING CONDITION. MAINTENANCE OF BMPs SHOULD BE PROACTIVE, NOT REACTIVE. INSPECT BMPs AS SOON AS POSSIBLE (AND ALWAYS WITHIN 24 HOURS) FOLLOWING A STORM THAT CAUSES SURFACE EROSION, AND PERFORM NECESSARY MAINTENANCE.
 2. FREQUENT OBSERVATIONS AND MAINTENANCE ARE NECESSARY TO MAINTAIN BMPs IN EFFECTIVE OPERATING CONDITION. INSPECTIONS AND CORRECTIVE MEASURES SHOULD BE DOCUMENTED THOROUGHLY.
 3. WHERE BMPs HAVE FAILED, REPAIR OR REPLACEMENT SHOULD BE INITIATED UPON DISCOVERY OF THE FAILURE.
 4. IF PERIMETER PROTECTION MUST BE MOVED TO ACCESS SOIL STOCKPILE, REPLACE PERIMETER CONTROLS BY THE END OF THE WORKDAY.
 5. STOCKPILE PERIMETER CONTROLS CAN BE REMOVED ONCE ALL THE MATERIAL FROM THE STOCKPILE HAS BEEN USED.
- STOCKPILE PROTECTION MAINTENANCE NOTES**
1. INSPECT BMPs EACH WORKDAY, AND MAINTAIN THEM IN EFFECTIVE OPERATING CONDITION. MAINTENANCE OF BMPs SHOULD BE PROACTIVE, NOT REACTIVE. INSPECT BMPs AS SOON AS POSSIBLE (AND ALWAYS WITHIN 24 HOURS) FOLLOWING A STORM THAT CAUSES SURFACE EROSION, AND PERFORM NECESSARY MAINTENANCE.
 2. FREQUENT OBSERVATIONS AND MAINTENANCE ARE NECESSARY TO MAINTAIN BMPs IN EFFECTIVE OPERATING CONDITION. INSPECTIONS AND CORRECTIVE MEASURES SHOULD BE DOCUMENTED THOROUGHLY.
 3. WHERE BMPs HAVE FAILED, REPAIR OR REPLACEMENT SHOULD BE INITIATED UPON DISCOVERY OF THE FAILURE.
 4. IF PERIMETER PROTECTION MUST BE MOVED TO ACCESS SOIL STOCKPILE, REPLACE PERIMETER CONTROLS BY THE END OF THE WORKDAY.
 5. STOCKPILE PERIMETER CONTROLS CAN BE REMOVED ONCE ALL THE MATERIAL FROM THE STOCKPILE HAS BEEN USED.
- (DETAILS ADAPTED FROM PARKER, COLORADO, NOT AVAILABLE IN AUTOCAD)
- NOTE: MANY JURISDICTIONS HAVE BMP DETAILS THAT VARY FROM UDFCD STANDARD DETAILS. CONSULT WITH LOCAL JURISDICTIONS AS TO WHICH DETAIL SHOULD BE USED WHEN DIFFERENCES ARE NOTED.

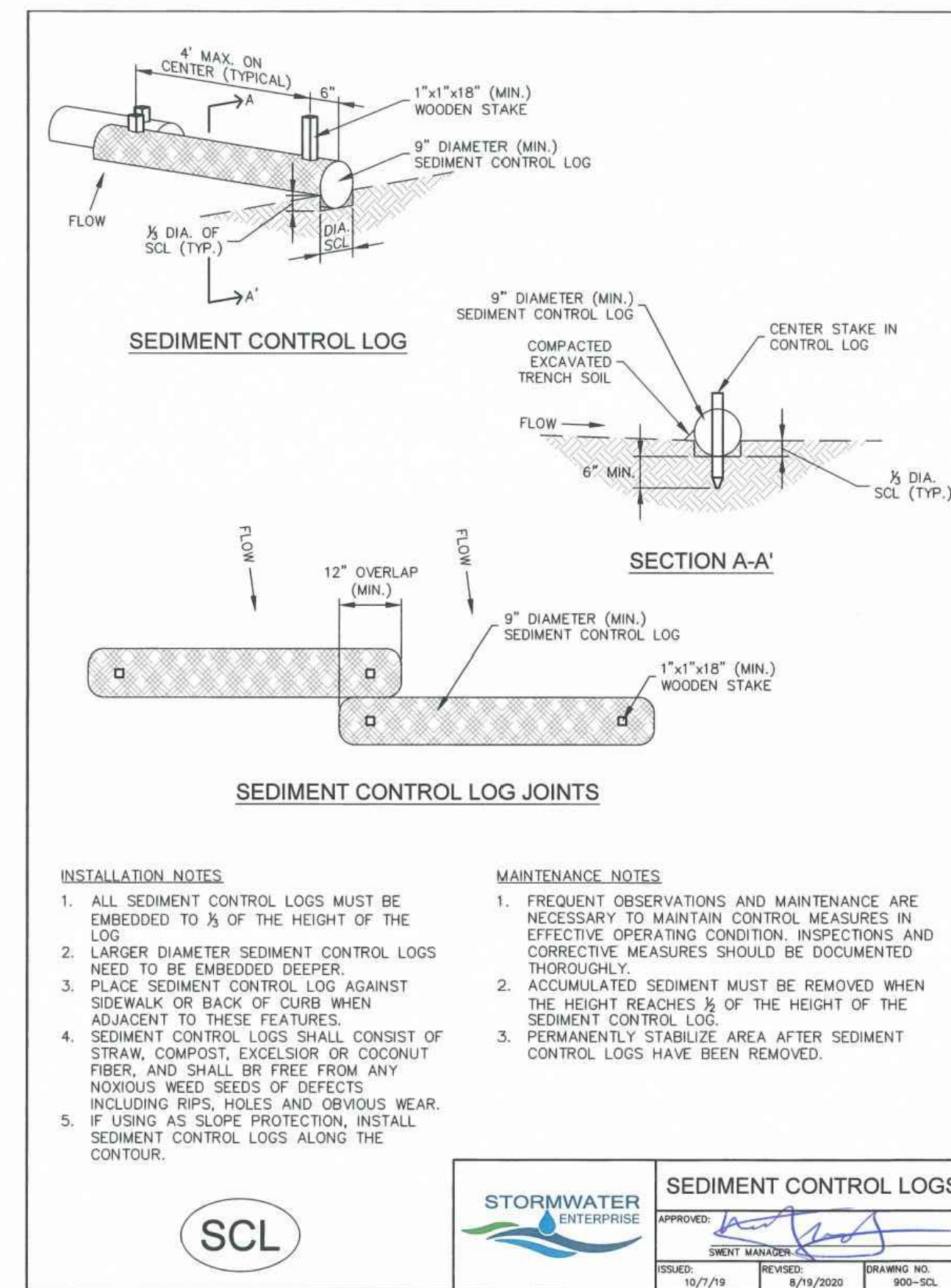
SP-4 Urban Drainage and Flood Control District November 2010
Urban Storm Drainage Criteria Manual Volume 3

Stabilized Staging Area (SSA) SM-6



- STABILIZED STAGING AREA INSTALLATION NOTES**
1. SEE PLAN VIEW FOR:
 - LOCATION OF STAGING AREA(S).
 - CONTRACTOR MAY ADJUST LOCATION AND SIZE OF STAGING AREA WITH APPROVAL FROM THE LOCAL JURISDICTION.
 2. STABILIZED STAGING AREA SHOULD BE APPROPRIATE FOR THE NEEDS OF THE SITE. OVERSIZING RESULTS IN A LARGER AREA TO STABILIZE FOLLOWING CONSTRUCTION.
 3. STAGING AREA SHALL BE STABILIZED PRIOR TO OTHER OPERATIONS ON THE SITE.
 4. THE STABILIZED STAGING AREA SHALL CONSIST OF A MINIMUM 3" THICK GRANULAR MATERIAL.
 5. UNLESS OTHERWISE SPECIFIED BY LOCAL JURISDICTION, ROCK SHALL CONSIST OF DOT SECT. #703, #45HTO #13 COURSE AGGREGATE OR #1 (MINUS) ROCK.
 6. ADDITIONAL PERIMETER BMPs MAY BE REQUIRED INCLUDING BUT NOT LIMITED TO SILT FENCE AND CONSTRUCTION FENCING.
- STABILIZED STAGING AREA MAINTENANCE NOTES**
1. INSPECT BMPs EACH WORKDAY, AND MAINTAIN THEM IN EFFECTIVE OPERATING CONDITION. MAINTENANCE OF BMPs SHOULD BE PROACTIVE, NOT REACTIVE. INSPECT BMPs AS SOON AS POSSIBLE (AND ALWAYS WITHIN 24 HOURS) FOLLOWING A STORM THAT CAUSES SURFACE EROSION, AND PERFORM NECESSARY MAINTENANCE.
 2. FREQUENT OBSERVATIONS AND MAINTENANCE ARE NECESSARY TO MAINTAIN BMPs IN EFFECTIVE OPERATING CONDITION. INSPECTIONS AND CORRECTIVE MEASURES SHOULD BE DOCUMENTED THOROUGHLY.
 3. WHERE BMPs HAVE FAILED, REPAIR OR REPLACEMENT SHOULD BE INITIATED UPON DISCOVERY OF THE FAILURE.
 4. ROCK SHALL BE REAPPLIED OR REGRADED AS NECESSARY IF RUTTING OCCURS OR UNDERLYING SUBGRADE BECOMES EXPOSED.

November 2010 Urban Drainage and Flood Control District SSA-3
Urban Storm Drainage Criteria Manual Volume 3



- INSTALLATION NOTES**
1. ALL SEDIMENT CONTROL LOGS MUST BE EMBEDDED TO 1/2 OF THE HEIGHT OF THE LOG.
 2. LARGER DIAMETER SEDIMENT CONTROL LOGS NEED TO BE EMBEDDED DEEPER.
 3. PLACE SEDIMENT CONTROL LOG AGAINST SIDEWALK OR BACK OF CURB WHEN ADJACENT TO THESE FEATURES.
 4. SEDIMENT CONTROL LOGS SHALL CONSIST OF STRAW, COMPOST, EXCELSIOR OR COCONUT FIBER, AND SHALL BE FREE FROM ANY NOXIOUS WEED SEEDS OR DEFECTS INCLUDING RIPS, HOLES AND OBVIOUS WEAR.
 5. IF USING AS SLOPE PROTECTION, INSTALL SEDIMENT CONTROL LOGS ALONG THE CONTOUR.
- MAINTENANCE NOTES**
1. FREQUENT OBSERVATIONS AND MAINTENANCE ARE NECESSARY TO MAINTAIN CONTROL MEASURES IN EFFECTIVE OPERATING CONDITION. INSPECTIONS AND CORRECTIVE MEASURES SHOULD BE DOCUMENTED THOROUGHLY.
 2. ACCUMULATED SEDIMENT MUST BE REMOVED WHEN THE HEIGHT REACHES 1/2 OF THE HEIGHT OF THE SEDIMENT CONTROL LOG.
 3. PERMANENTLY STABILIZE AREA AFTER SEDIMENT CONTROL LOGS HAVE BEEN REMOVED.

SEDIMENT CONTROL LOGS

APPROVED: [Signature]

ISSUED: 10/7/19 REVISED: 8/19/2020 DRAWING NO: 900-SCL

Chapter 14 Revegetation

or irrigation to wet and settle the seed bed. Firming of the seedbed following seeding will improve results during dry or warm seeding times.

Table 14-9. Recommended Seed Mix for High Water Table Conditions¹

Common Name (Variety)	Scientific Name	Growth Season	Growth Form	Seeds/Lb	Lbs PLS/Acre Drilled	Lbs PLS/Acre Broadcast or Hydroseeded
Redtop ²	<i>Agrostis alba</i>	Warm	Sod	5,000,000	0.1	0.2
Switchgrass (Pathfinder)	<i>Panicum virgatum</i>	Warm	Sod/Bunch	389,000	2.2	4.4
Western wheatgrass (Ariaba)	<i>Pascopyrum smithii</i>	Cool	Sod	110,000	7.9	15.8
Indian saltgrass	<i>Distichlis spicata</i>	Warm	Sod	520,000	1.0	2.0
Woolly sedge	<i>Carex lasiocarpa</i>	Cool	Sod	400,000	0.1	0.2
Baltic rush	<i>Juncus balticus</i>	Cool	Sod	109,300,000	0.1	0.2
Prairie cordgrass	<i>Spartina pectinata</i>	Cool	Sod	110,000	1.0	2.0
Annual rye	<i>Lolium multiflorum</i>	Cool	Cover crop	227,000	10.0	20.0
				TOTAL	22.4	44.8
Wildflowers						
Nuttall's sunflower	<i>Helianthus nuttallii</i>	---	---	250,000	0.10	0.20
Wild bergamot	<i>Monarda fistulosa</i>	---	---	1,450,000	0.12	0.24
Yarrow	<i>Achillea millefolium</i>	---	---	2,770,000	0.06	0.12
Blue vervain	<i>Verbena hastata</i>	---	---	---	0.12	0.24
				TOTAL	0.40	0.80

¹For portions of facilities located near or on the bottom or where wet soil conditions occur. Planting of potted nursery stock wetland plants 3-foot on-center is recommended for sites with wetland hydrology.
²Non-native

May 2014 City of Colorado Springs 14-21
Drainage Criteria Manual, Volume 1

Revegetation Chapter 14

Table 14-10. Recommended Seed Mix for Transition Areas¹

Common Name (Variety)	Scientific Name	Growth Season	Growth Form	Seeds/Lb	Lbs PLS/Acre Drilled	Lbs PLS/Acre Broadcast or Hydroseeded
Sheep fescue (Durat)	<i>Festuca ovina</i>	Cool	Bunch	680,000	1.3	2.6
Western wheatgrass (Ariaba)	<i>Pascopyrum smithii</i>	Cool	Sod	110,000	7.9	15.8
Alkali sacaton	<i>Sporobolus airoides</i>	Warm	Bunch	1,758,000	0.5	1.0
Slender wheatgrass	<i>Elymus trachycalyx</i>	Cool	Bunch	159,000	5.5	11.0
Canadian bluegrass (Ruebens) ¹	<i>Poa compressa</i>	Cool	Sod	2,500,000	0.3	0.6
Switchgrass (Pathfinder)	<i>Panicum virgatum</i>	Warm	Sod/Bunch	389,000	1.3	2.6
Annual rye	<i>Lolium multiflorum</i>	Cool	Cover crop	227,000	10.0	20.0
				TOTAL	26.8	53.6
Wildflowers						
Blanket flower	<i>Faillardia aristata</i>	---	---	132,000	0.25	0.50
Prairie coneflower	<i>Ratibida columnaris</i>	---	---	1,230,000	0.20	0.40
Purple prairie clover	<i>Petalostemum purpurea</i>	---	---	210,000	0.20	0.40
Gayfeather	<i>Liatris punctata</i>	---	---	138,000	0.06	0.12
Flax	<i>Linum lewisii</i>	---	---	293,000	0.20	0.40
Penstemon	<i>Penstemon strictus</i>	---	---	592,000	0.20	0.40
Yarrow	<i>Achillea millefolium</i>	---	---	2,770,000	0.03	0.06
				TOTAL	1.14	2.28

¹For side slopes or between wet and dry areas.
²Substitute 1.7 lbs PLS/acre of inland saltgrass (*Distichlis spicata*) in salty soils.

14-22 City of Colorado Springs May 2014
Drainage Criteria Manual, Volume 1

SM-6 Stabilized Staging Area (SSA)

- STABILIZED STAGING AREA MAINTENANCE NOTES**
5. STABILIZED STAGING AREA SHALL BE ENLARGED IF NECESSARY TO CONTAIN PARKING, STORAGE, AND UNLOADING/LOADING OPERATIONS.
 6. THE STABILIZED STAGING AREA SHALL BE REMOVED AT THE END OF CONSTRUCTION. THE GRANULAR MATERIAL SHALL BE REMOVED OR, IF APPROVED BY THE LOCAL JURISDICTION, USED ON SITE, AND THE AREA COVERED WITH TOPSOIL, SEEDED AND MULCHED OR OTHERWISE STABILIZED IN A MANNER APPROVED BY LOCAL JURISDICTION.
- NOTE: MANY MUNICIPALITIES PROHIBIT THE USE OF RECYCLED CONCRETE AS GRANULAR MATERIAL FOR STABILIZED STAGING AREAS DUE TO DIFFICULTIES WITH RE-ESTABLISHMENT OF VEGETATION IN AREAS WHERE RECYCLED CONCRETE WAS PLACED.
- NOTE: MANY JURISDICTIONS HAVE BMP DETAILS THAT VARY FROM UDFCD STANDARD DETAILS. CONSULT WITH LOCAL JURISDICTIONS AS TO WHICH DETAIL SHOULD BE USED WHEN DIFFERENCES ARE NOTED.
- (DETAILS ADAPTED FROM DOUGLAS COUNTY, COLORADO, NOT AVAILABLE IN AUTOCAD)

SSA-4 Urban Drainage and Flood Control District November 2010
Urban Storm Drainage Criteria Manual Volume 3

REVISIONS

NO.	DESCRIPTION	DATE

UNTIL SUCH TIME AS THESE DRAWINGS ARE APPROVED BY THE APPLICABLE REVIEWING AGENCIES, THESE DRAWINGS ARE NOT TO BE USED FOR ANY PURPOSES DESIGNATED BY WRITTEN AUTHORIZATION.

PREPARED FOR:
MVEA
ATTN: DAVE WALDMEN
11140 E. WOODMEN RD
PEYTON, CO 80831
(719) 495-2283

Terra Nova
Engineering, Inc.
11111 US 101
P.O. Box 11111
Colorado Springs, CO 80904
OFFICE: 719-635-6422
FAX: 719-635-6426
www.terranovaltd.com

VOLLMER SUBSTATION WEST CIRCUIT

GRADING, EROSION, & SEDIMENT CONTROL PLAN
EROSION CONTROL DETAILS

DESIGNED BY JF
DRAWN BY JF
CHECKED BY
H-SCALE AS SHOWN
V-SCALE NA
JOB NO. 2583.00
DATE ISSUED 03/18/26
SHEET NO. 6 OF 6