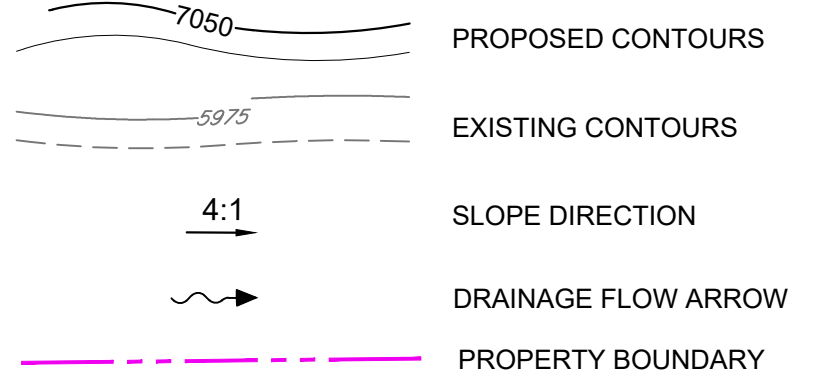
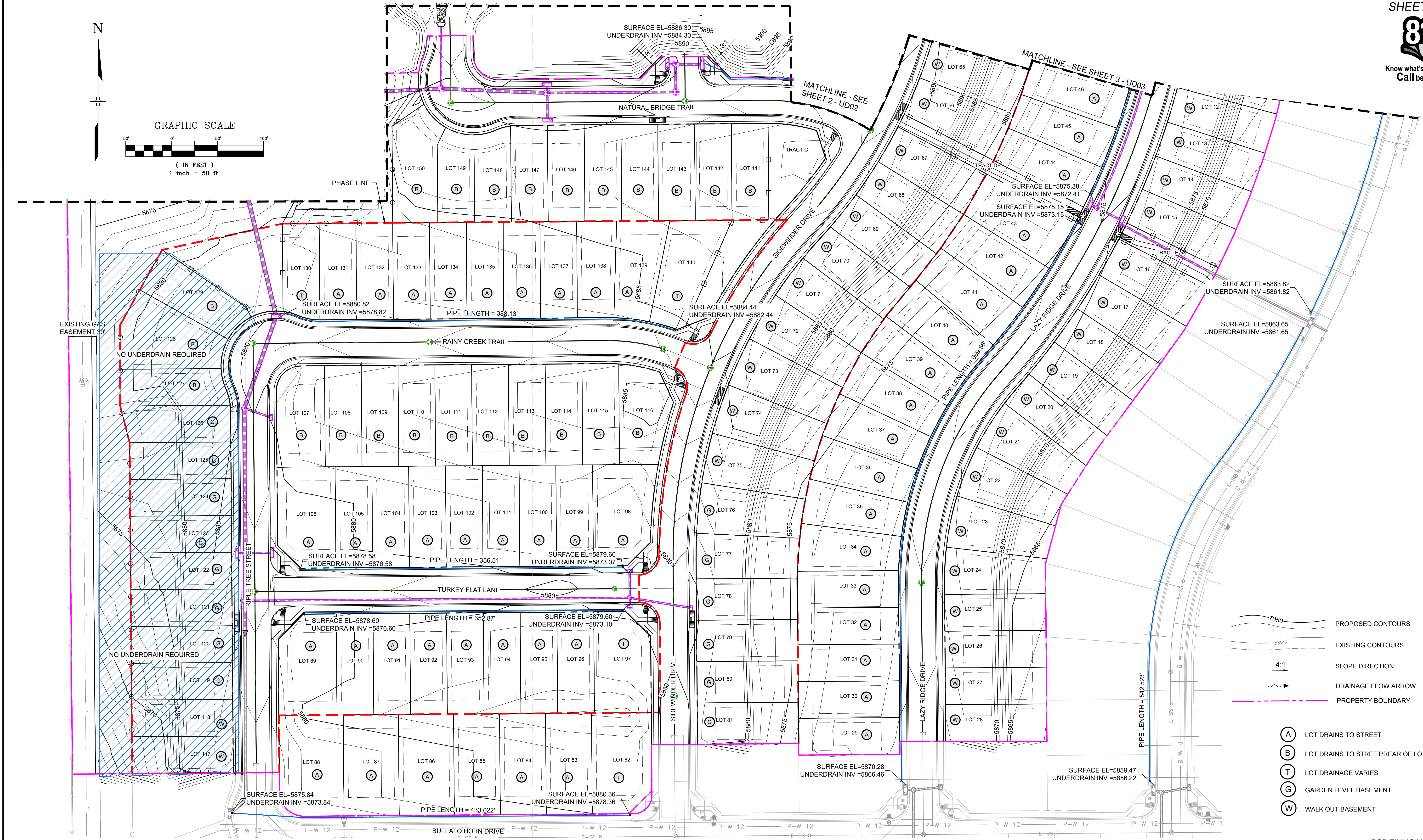
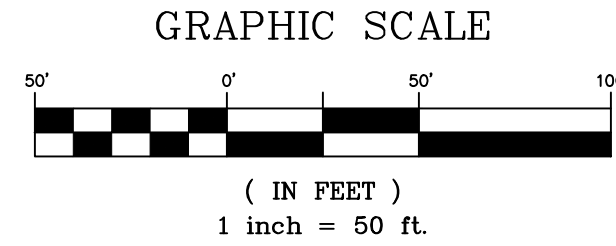




Know what's below.
Call before you dig.



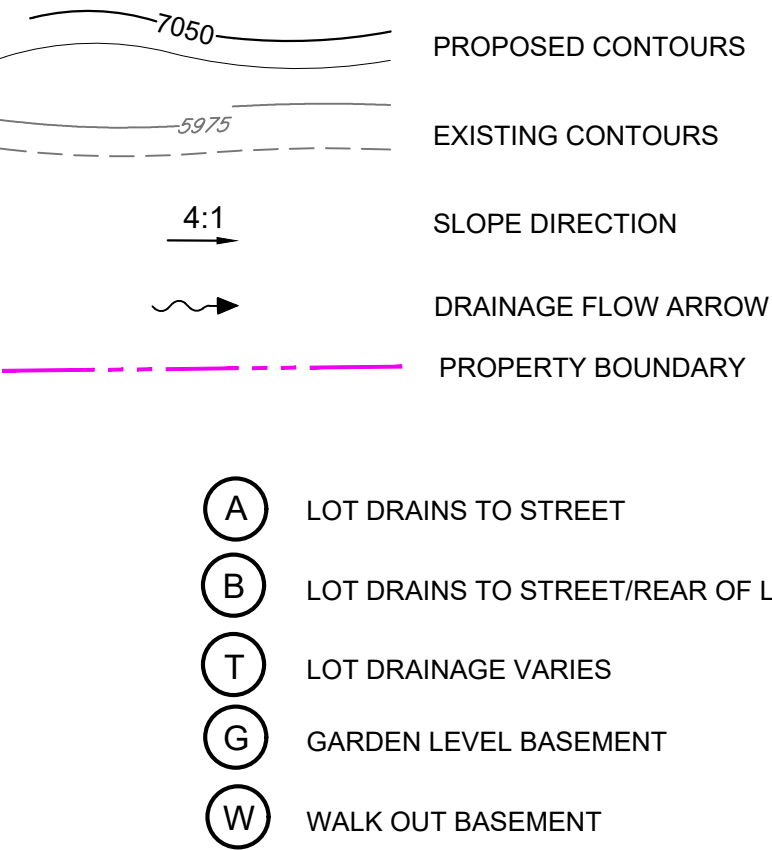
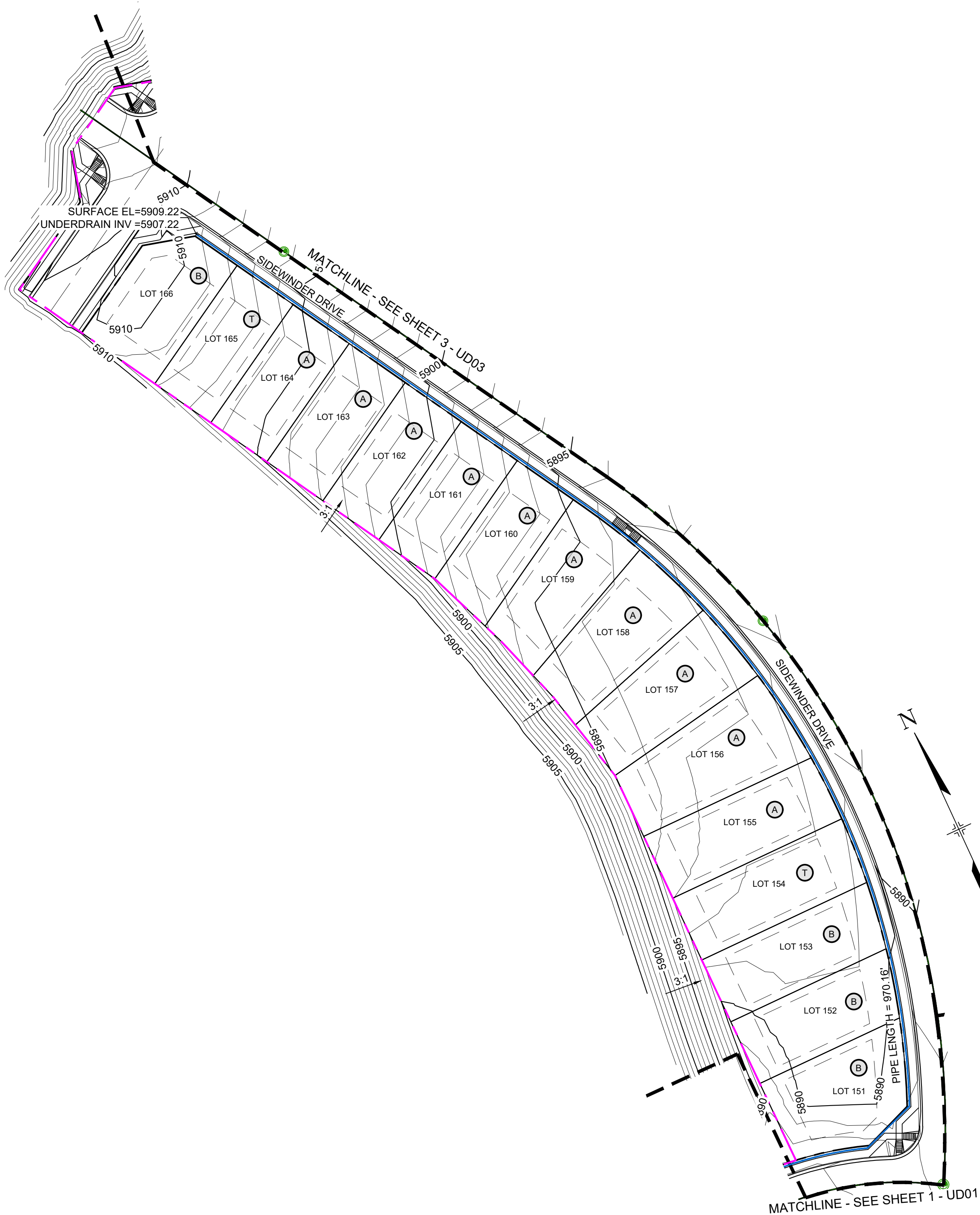
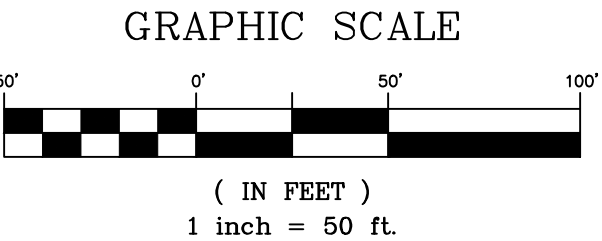
- (A) LOT DRAINS TO STREET
- (B) LOT DRAINS TO STREET/REAR OF LOT
- (T) LOT DRAINAGE VARIES
- (G) GARDEN LEVEL BASEMENT
- (W) WALK OUT BASEMENT

PCD FILING NO.: SF-21-022

REFERENCE DRAWINGS X-886-EX-BASE X-886-EX-SURVEY X-886-PR-SITE-F1 X-886-PR-SITE-F2 886-PR Legacy Drive-Roundabout 886-pr Legacy drive X-886-PR-SITE-F3 10415-EX-UTILS 19-886-PR-UTIL X-886-PR-STORM-F1 X-886-PR-UTIL-F2 19-886-PR-UTIL-SANITARY X-886-PR-WTR X-886-PR-WTR-F3 X-886-PR-WTR-F6 X-886-PR-WTR-F5 X-886-PR-WTR-F4 X-886-PR-WTR-F7 X-1006-PR				DESCRIPTION REVISIONS No. DATE				COMPUTER FILE MANAGEMENT FILE NAME: S:\20.886.028 (Trails F3)\100 Dwg\105 Exhibits\F3 UNDERDRAIN.dwg CTB FILE: ---- PLOT DATE: December 2, 2021 6:03:37 PM THIS DRAWING IS CURRENT AS OF PLOT DATE AND MAY BE SUBJECT TO CHANGE.				SHEET KEY BY				BENCHMARK COLORADO SPRINGS UTILITIES (FIMS) MONUMENT F206 A BERNTSEN TOP SECURITY MONUMENT SYSTEM WITH A 3.5-INCH DIAMETER ALUMINUM CAP IN A ROAD BOX, LOCATED ON THE NORTHWEST CORNER OF FONTAINE BOULEVARD AND POWERS BOULEVARD. ELEVATION - 5897.89' U.S. SURVEY FT BASIS OF BEARING BEARINGS ARE BASED ON THE NORTH LINE OF THE NORTHWEST QUARTER OF SECTION 9, TOWNSHIP 15 SOUTH, RANGE 65 WEST OF THE 6TH P.M. SAID LINE BEARS S89°51'23"E FROM THE NORTHWEST CORNER OF SAID SECTION 9 (2 1/2' AULM. CAP PLS 17664) TO THE N 1/4 CORNER OF SAID SECTION 9 (3 1/2' AULM. CAP PLS 10377)				PREPARED BY: 				SEAL PRELIMINARY THIS DRAWING HAS NOT BEEN APPROVED BY GOVERNING AGENCIES AND IS SUBJECT TO CHANGE FOR AND ON BEHALF OF MATRIX DESIGN GROUP, INC. PROJECT No. 20.886.028				TRAILS AT ASPEN RIDGE FILING NO. 3 UNDERDRAIN PLAN UNDERDRAIN PLAN				DESIGNED BY: NMS DRAWN BY: CRD CHECKED BY: NMS SCALE HORIZ. 1" = 50' VERT. N/A DATE ISSUED: DECEMBER 2021 SHEET 1 OF 3 DRAWING No. UD01			
--	--	--	--	--	--	--	--	---	--	--	--	------------------------	--	--	--	---	--	--	--	-------------------------	--	--	--	---	--	--	--	--	--	--	--	---	--	--	--



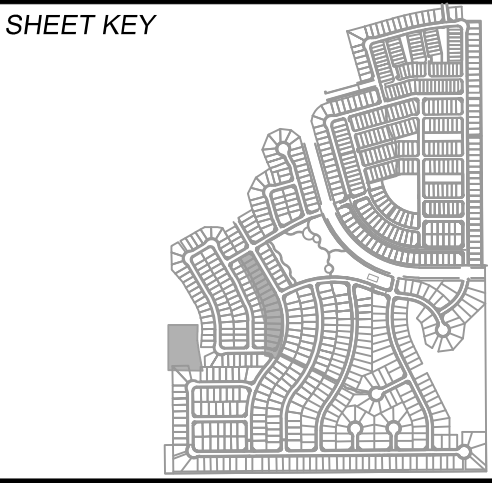
Know what's below.
Call before you dig.



PCD FILING NO.: SF-21-022

REFERENCE DRAWINGS	####	####	####
X-886-EX-BASE	####	####	####
X-886-EX SURVEY	####	####	####
X-886-PR SITE - F1	####	####	####
X-886-PR SITE-F2	####	####	####
886-PR Legacy Drive-Roundabout	####	####	####
886-pr legacy drive	####	####	####
X-886-PR-SITE - F3	####	####	####
10415-Ex Util	####	####	####
19-886-PR-UTIL	####	####	####
X-886-PR STORM- F1	####	####	####
X-886-PR-UTIL-F2	####	####	####
19-886-PR-UTIL_SANITARY	####	####	####
X-886-PR-WTR	####	####	####
X-886-PR-WTR-F3	####	####	####
X-886-PR-WTR-F6	####	####	####
X-886-PR-WTR-F5	####	####	####
X-886-PR-WTR-F4	####	####	####
X-886-PR-WTR-F7	####	####	####
X-886-PR-WTR-F8	####	####	####

No.	DATE	DESCRIPTION	BY
REVISIONS			
COMPUTER FILE MANAGEMENT			
FILE NAME: S:\20.886.028 (Trails F3)\100 Dwg\105 Exhibits\F3 UNDERDRAIN.dwg			
CTB FILE: ----			
PLOT DATE: December 2, 2021 6:03:44 PM			
THIS DRAWING IS CURRENT AS OF PLOT DATE AND MAY BE SUBJECT TO CHANGE.			



BENCHMARK
COLORADO SPRINGS UTILITIES (FIMS) MONUMENT F206
A BERTNSEN TOP SECURITY MONUMENT SYSTEM WITH A 3.5-INCH DIAMETER ALUMINUM CAP IN A ROAD BOX, LOCATED ON THE NORTHWEST CORNER OF FONTAINE BOULEVARD AND POWERS BOULEVARD.
ELEVATION - 5897.89' U.S. SURVEY FT

BASIS OF BEARING
BEARINGS ARE BASED ON THE NORTH LINE OF THE NORTHWEST QUARTER OF SECTION 9, TOWNSHIP 15 SOUTH, RANGE 65 WEST OF THE 6TH P.M. SAID LINE BEARS S89°51'23"E FROM THE NORTHWEST CORNER OF SAID SECTION 9 (2 1/2' AULM. CAP PLS 17664) TO THE N 1/4 CORNER OF SAID SECTION 9 (3 1/2' AULM. CAP PLS 10377)

PREPARED BY:



SEAL

PRELIMINARY
THIS DRAWING HAS NOT BEEN APPROVED BY GOVERNING AGENCIES AND IS SUBJECT TO CHANGE

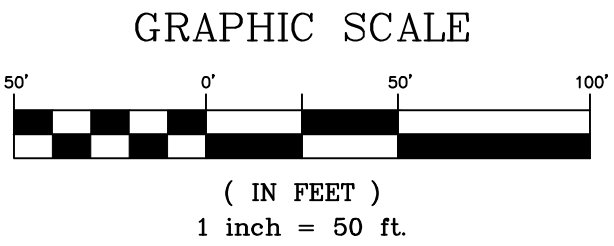
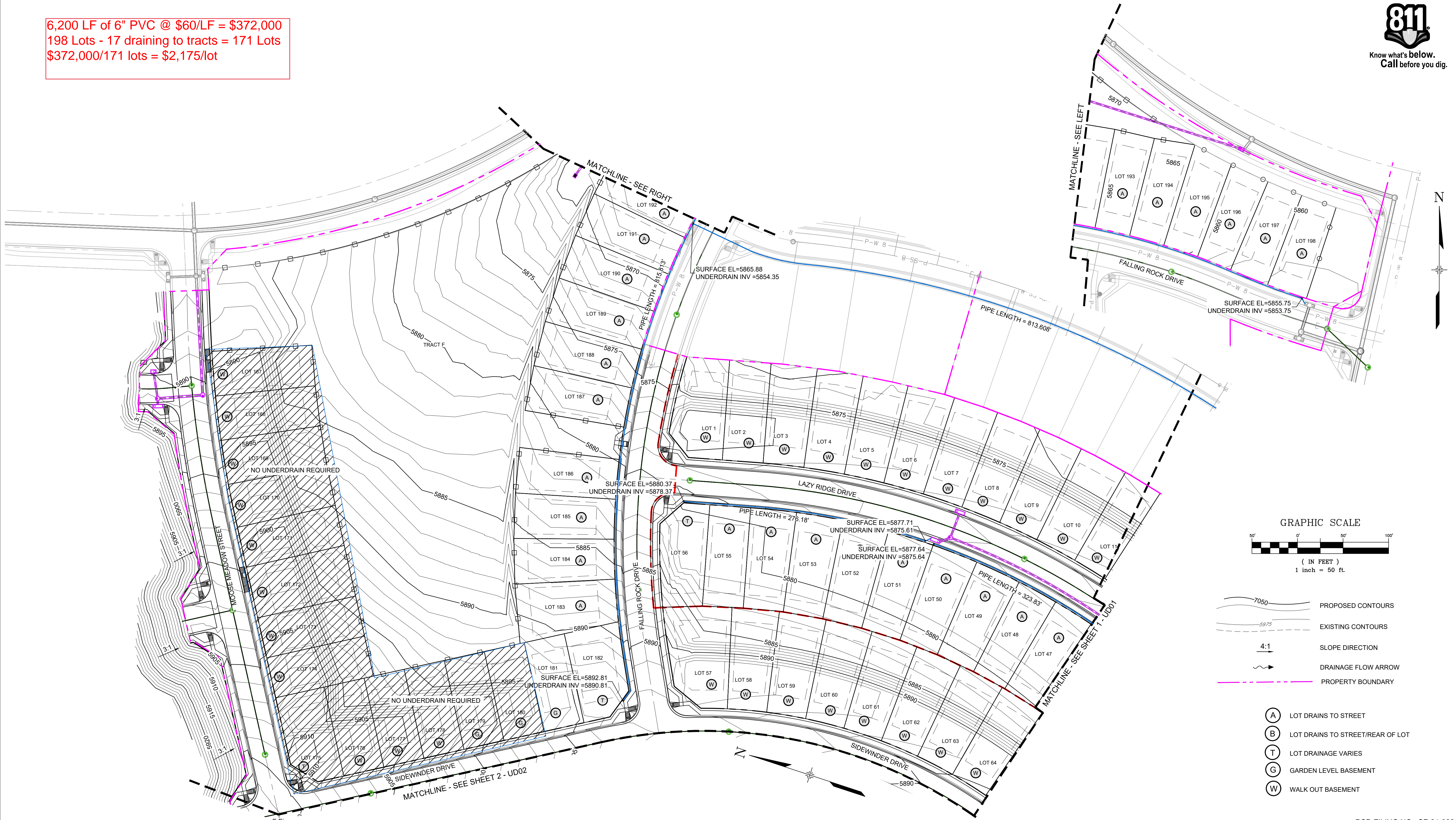
FOR AND ON BEHALF OF
MATRIX DESIGN GROUP, INC.
PROJECT No. 20.886.028

TRAILS AT ASPEN RIDGE			
FILING NO. 3 UNDERDRAIN PLAN			
UNDERDRAIN PLAN			
DESIGNED BY: NMS	SCALE	DATE ISSUED: DECEMBER 2021	DRAWING No.
DRAWN BY: CRD	HORIZ. 1" = 50'	SHEET	UD02
CHECKED BY: NMS	VERT. N/A	2 OF 3	



Know what's below.
Call before you dig.

6,200 LF of 6" PVC @ \$60/LF = \$372,000
198 Lots - 17 draining to tracts = 171 Lots
\$372,000/171 lots = \$2,175/lot



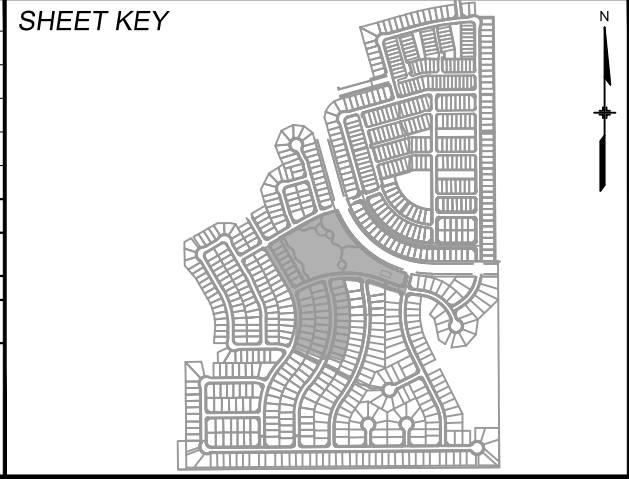
- PROPOSED CONTOURS
- EXISTING CONTOURS
- SLOPE DIRECTION
- DRAINAGE FLOW ARROW
- PROPERTY BOUNDARY

- (A) LOT DRAINS TO STREET
- (B) LOT DRAINS TO STREET/REAR OF LOT
- (T) LOT DRAINAGE VARIES
- (G) GARDEN LEVEL BASEMENT
- (W) WALK OUT BASEMENT

PCD FILING NO.: SF-21-022

REFERENCE DRAWINGS	####	####	####	####
X-886-EX-BASE	####	####	####	####
X-886-EX SURVEY	####	####	####	####
X-886-PR SITE - F1	####	####	####	####
X-886-PR SITE-F2	####	####	####	####
886-PR Legacy Drive-Roundabout	####	####	####	####
886-pr Legacy drive	####	####	####	####
X-886-PR-SITE - F3	####	####	####	####
19415-EX-UTILS	####	####	####	####
19-886-PR-UTIL	####	####	####	####
X-886-PR STORM- F1	####	####	####	####
X-886-PR-UTIL-F2	####	####	####	####
19-886-PR-UTIL_SANITARY	####	####	####	####
X-886-PR-WTR	####	####	####	####
X-886-PR-WTR-F3	####	####	####	####
X-886-PR-WTR-F6	####	####	####	####
X-886-PR-WTR-F5	####	####	####	####
X-886-PR-WTR-F4	####	####	####	####
X-886-PR-WTR-F7	####	####	####	####
X-886-PR-WTR-F8	####	####	####	####

No.	DATE	DESCRIPTION	BY
REVISIONS			
COMPUTER FILE MANAGEMENT			
FILE NAME: S:\20.886.028 (Trails F3)\100 Dwg\105 Exhibits\F3 UNDERDRAIN.dwg			
CTB FILE: ----			
PLOT DATE: December 2, 2021 6:03:53 PM			
THIS DRAWING IS CURRENT AS OF PLOT DATE AND MAY BE SUBJECT TO CHANGE.			



BENCHMARK
COLORADO SPRINGS UTILITIES (FIMS) MONUMENT F206
A BERNTSEN TOP SECURITY MONUMENT SYSTEM WITH A 3.5-INCH DIAMETER ALUMINUM CAP IN A ROAD BOX, LOCATED ON THE NORTHWEST CORNER OF FONTAINE BOULEVARD AND POWERS BOULEVARD.
ELEVATION - 5897.89' U.S. SURVEY FT

BASIS OF BEARING
BEARINGS ARE BASED ON THE NORTH LINE OF THE NORTHWEST QUARTER OF SECTION 9, TOWNSHIP 15 SOUTH, RANGE 65 WEST OF THE 6TH P.M. SAID LINE BEARS S89°51'23"E FROM THE NORTHWEST CORNER OF SAID SECTION 9 (2 1/2' AULM. CAP PLS 17664) TO THE N 1/4 CORNER OF SAID SECTION 9 (3 1/2' AULM. CAP PLS 10377)

PREPARED BY:

SEAL

PRELIMINARY
THIS DRAWING HAS NOT BEEN APPROVED BY GOVERNING AGENCIES AND IS SUBJECT TO CHANGE

FOR AND ON BEHALF OF
MATRIX DESIGN GROUP, INC.
PROJECT No. 20.886.028

TRAILS AT ASPEN RIDGE			
FILING NO. 3 UNDERDRAIN PLAN			
UNDERDRAIN PLAN			
DESIGNED BY:	NMS	SCALE	DATE ISSUED:
DRAWN BY:	CRD	HORIZ. 1" = 50'	DECEMBER 2021
CHECKED BY:	NMS	VERT. N/A	SHEET
			3 OF 3
			DRAWING No. UD03